

WALLACE FIELDS PHASE 3



A STUNNING DEVELOPMENT OF 3 & 4 BEDROOM HOMES

WALLACE FIELDS

DEVELOPMENT LAYOUT



KEY

COULL
3 bedroom terrace home

CUPAR
3 bedroom terrace home

THURSO
3 bedroom semi-detached home

CRAIGEND
3 bedroom detached
/semi-detached home

CROMBIE
4 bedroom home

GLAMIS
4 bedroom home

FENTON
4 bedroom home

KENMURE
4 bedroom home

KINLOCH
4 bedroom home

CAMPBELL
4 bedroom home

DUNBAR
4 bedroom home

DEAN
4 bedroom home

BALMORAL
4 bedroom home

BALLOCH
4 bedroom home

CULLEN
4 bedroom home

barratthomes.co.uk



COULL

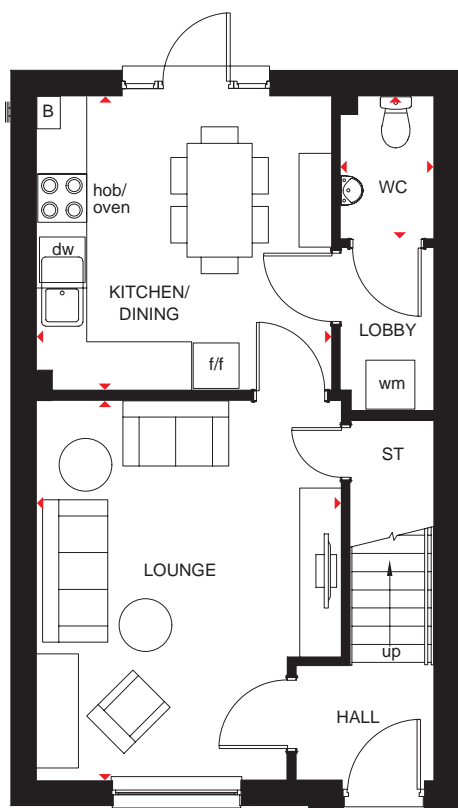
3 BEDROOM END-/MID-TERRACED HOME



- Open-plan kitchen and dining area, with access to the rear garden, creates the ideal hub for all the family
- Separate lobby with practical utility space and cloakroom
- Front-aspect lounge, providing plenty of space to relax
- Upstairs are two double bedrooms, a single bedroom and family bathroom



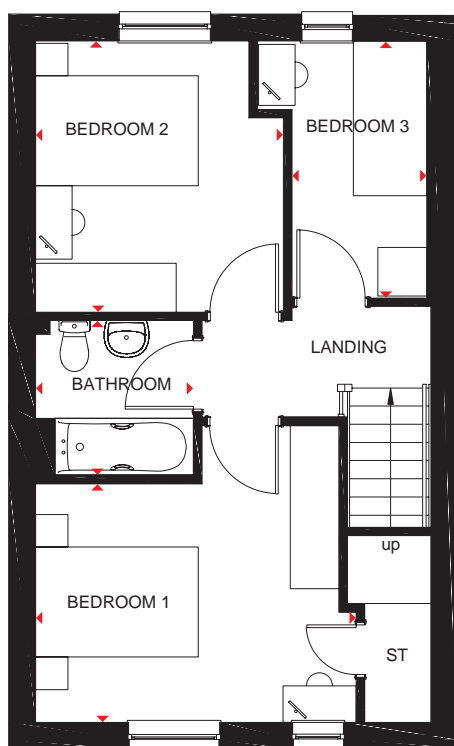
BARRATT
HOMES



Ground Floor

Lounge	3720 x 4650mm	12'2" x 15'3"
Kitchen/ Dining	3576 x 3588mm	11'9" x 11'9"
WC	1143 x 1743mm	3'9" x 5'9"

[Approximate dimensions]



First Floor

Bedroom 1	3944 x 3643mm	12'11" x 11'11"
Bedroom 2	3001 x 3329mm	9'10" x 10'11"
Bedroom 3	2081 x 3155mm	6'10" x 10'4"
Bathroom	1946 x 1900mm	6'5" x 6'3"

[Approximate dimensions]

KEY	B	Boiler	f/f	Fridge/freezer space
	ST	Store	dw	Dishwasher space
	wm	Washing machine space	◀▶	Dimension location

barratthomes.co.uk

CUPAR

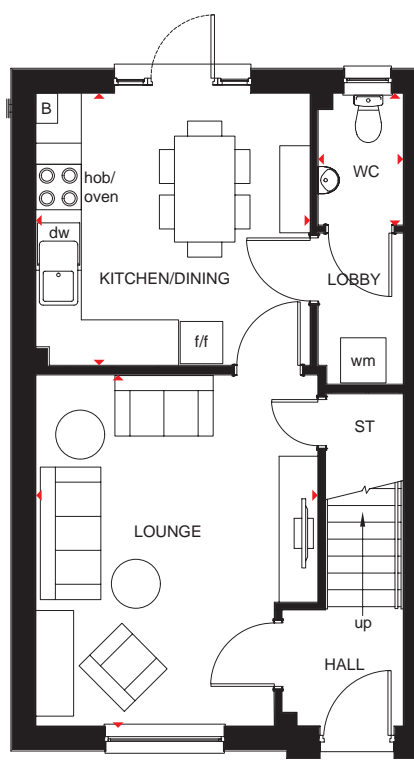
3 BEDROOM SEMI-DETACHED/TERRACED HOUSE



- Open-plan kitchen and dining area, with access to the rear garden, creates the ideal hub for all the family
- Separate lobby with practical utility space and cloakroom
- Front-aspect lounge, providing plenty of space to relax
- Upstairs are two double bedrooms, with an en suite to bedroom 1, a single bedroom and family bathroom



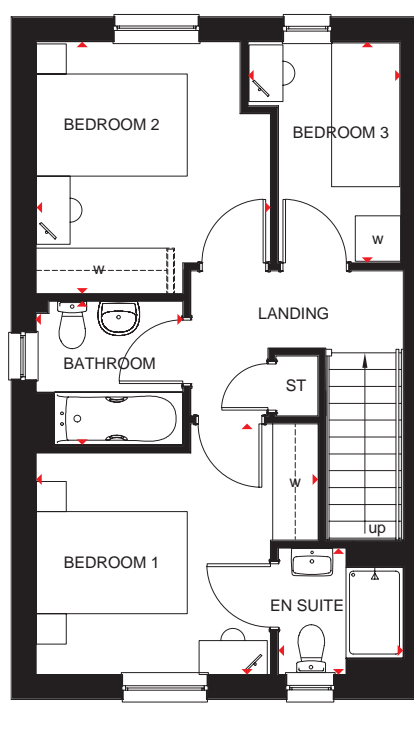
BARRATT
— HOMES —



Ground Floor

Lounge	3696 x 4650mm	12'2" x 15'3"
Kitchen/Dining	3595 x 3598mm	11'10" x 11'10"
WC	1125 x 1743mm	3'8" x 5'9"

[Approximate dimensions]



First Floor

Bedroom 1	3728 x 3316mm	12'3" x 10'11"
En Suite	1654 x 1672mm	5'5" x 5'6"
Bedroom 2	3066 x 3329mm	10'1" x 10'11"
Bedroom 3	2016 x 2923mm	6'7" x 9'7"
Bathroom	1946 x 1900mm	6'5" x 6'3"

[Approximate dimensions]

KEY	B	Boiler	f/f	Fridge/freezer space	◀▶	Dimension location
	ST	Store	dw	Dishwasher space		
	wm	Washing machine space	w	Wardrobe space		

barratthomes.co.uk

All images used are for illustrative purposes. These and the dimensions given are illustrative for this house type and individual properties may differ. Please check with your Sales Adviser in respect of individual properties. We give maximum dimensions within each room which includes areas of fixtures and fittings including fitted furniture. These dimensions should not be used for carpet or flooring sizes, appliance spaces or items of furniture. All images, photographs and dimensions are not intended to be relied upon for, nor to form part of, any contract unless specifically incorporated in writing into the contract. Housetype may include Solar PV Panels, please speak to Sales Adviser for further details.

BCUP 02-E DS00 /SP439225

THURSO

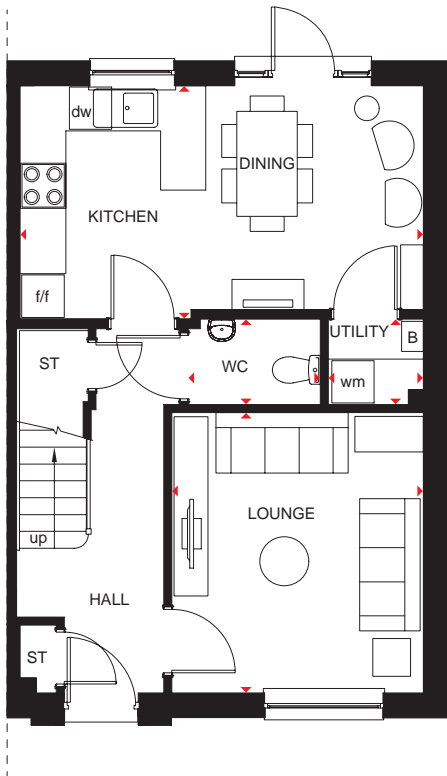
3 BEDROOM SEMI DETACHED HOME



- Superb family home with the open-plan kitchen flowing into the dining area, with access to the rear garden
- Bright, front-aspect lounge, a cloakroom and practical utility and storage space complete the ground floor
- Upstairs are three double bedrooms, the main with en suite, and a family bathroom



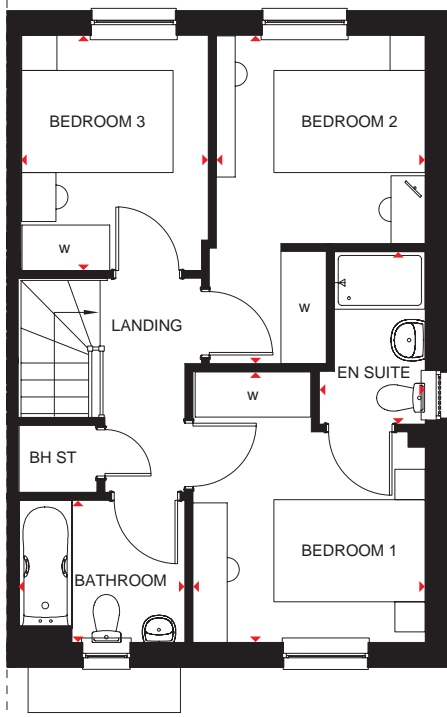
BARRATT
HOMES



Ground Floor

Lounge	3328 x 3707mm	10'11" x 12'2"
Kitchen/Dining	5330 x 3085mm	17'6" x 10'1"
WC	1750 x 1129mm	5'9" x 3'8"
Utility	1257 x 1129mm	4'1" x 3'8"

[Approximate dimensions]



First Floor

Bedroom 1	3068 x 3585mm	10'1" x 11'9"
En Suite	1397 x 2280mm	4'7" x 7'6"
Bedroom 2	2851 x 4340mm	9'4" x 14'3"
Bedroom 3	2464 x 3108mm	8'1" x 10'2"
Bathroom	2157 x 1882mm	7'1" x 6'2"

[Approximate dimensions]

KEY	B	Boiler	wm	Washing machine space	w	Wardrobe space
	ST	Store	f/f	Fridge/freezer space	◀▶	Dimension location
	BH ST	Bulkhead store	dw	Dishwasher space		

barratthomes.co.uk

CRAIGEND

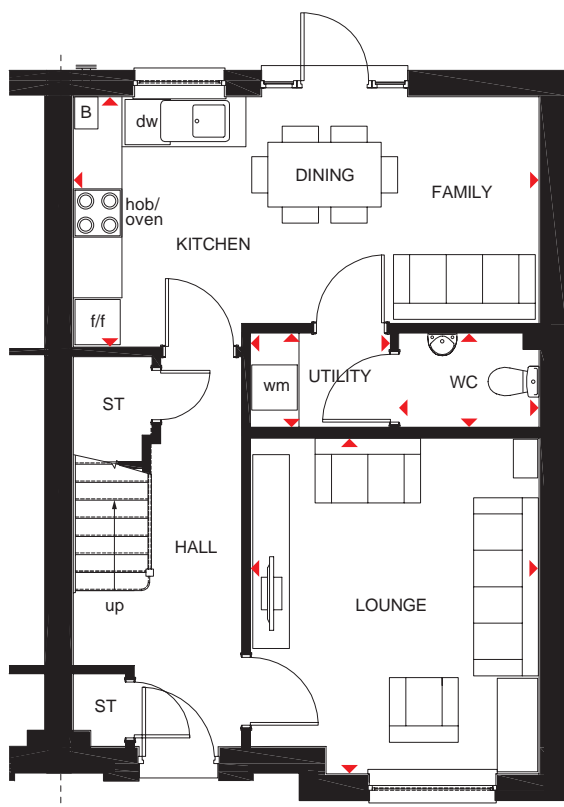
3 BEDROOM SEMI-DETACHED HOME



- Spacious open-plan kitchen with dining and family areas, and access to the rear garden and utility
- Bright, front-aspect lounge provides room for everyone to relax
- Plenty of storage space and a cloakroom complete the ground floor making this a practical family home
- Upstairs are three double bedrooms, the main with en suite, and a family bathroom



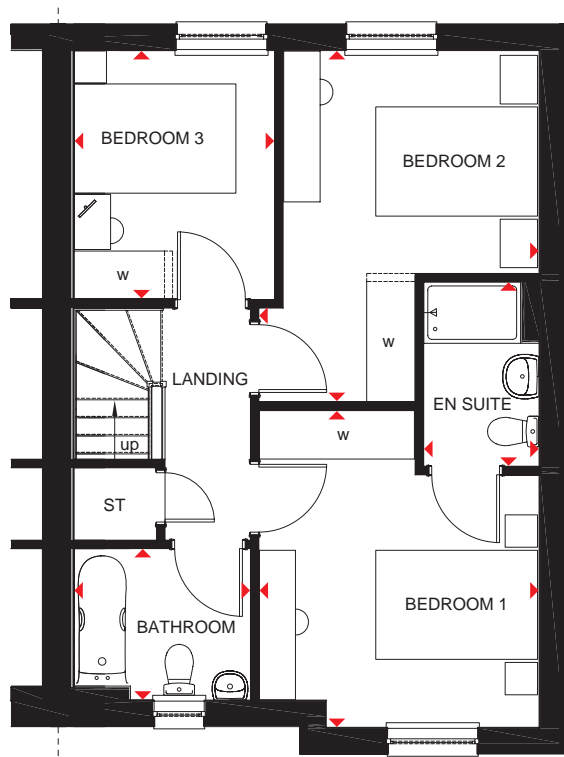
BARRATT
HOMES



Ground Floor

Lounge	3565 x 4141mm	11'8" x 13'7"
Kitchen/ Family/Dining	5752 x 3082mm	18'10" x 10'1"
WC	1732 x 1161mm	5'8" x 3'10"
Utility	1728 x 1161mm	5'8" x 3'10"

(Approximate dimensions)



First Floor

Bedroom 1	3465 x 3923mm	11'4" x 12'10"
En Suite	1427 x 2280mm	4'8" x 7'6"
Bedroom 2	3465 x 4340mm	11'4" x 14'3"
Bedroom 3	2482 x 3114mm	8'2" x 10'3"
Bathroom	2182 x 1876mm	7'2" x 6'2"

(Approximate dimensions)

KEY	B	Boiler	f/f	Fridge/freezer space	◀▶	Dimension location
	ST	Store	dw	Dishwasher space		
	wm	Washing machine space	w	Wardrobe space		

barratthomes.co.uk

GLAMIS

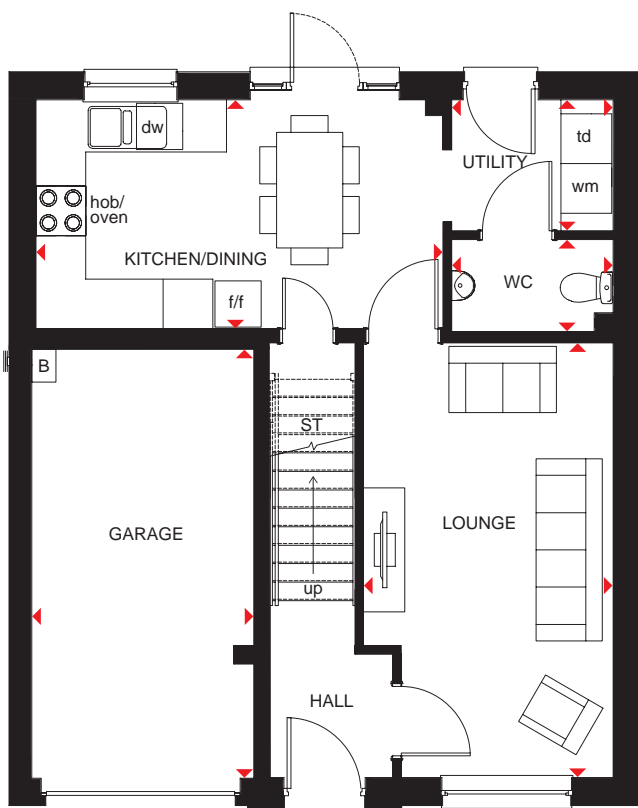
4 BEDROOM DETACHED HOME



- This detached home features four bedrooms and large living spaces for you and your family
- The ground floor has an integral garage, a large lounge and open kitchen with dining area. A functional utility room leads to the family garden
- On the first floor you will find three double bedrooms and one single which can easily be used as a comfortable home office
- There's a family bathroom with bath, and the main bedroom is en suite



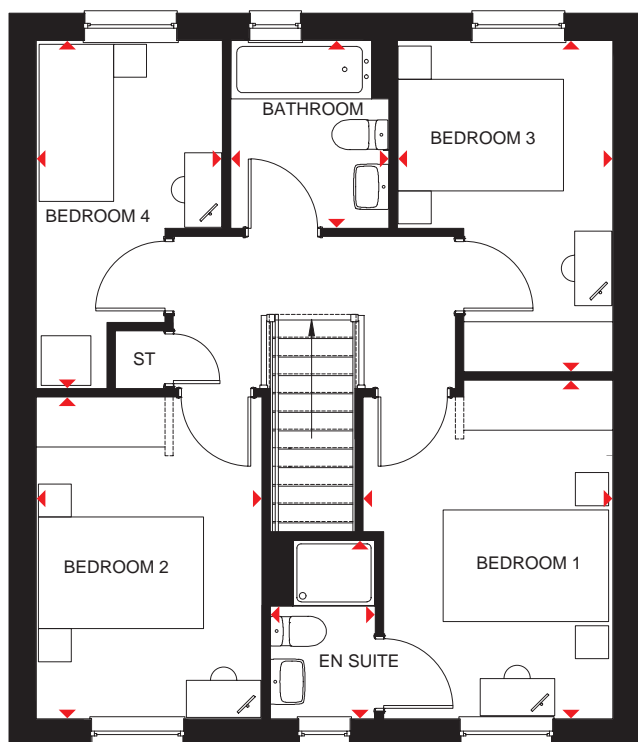
BARRATT
HOMES



Ground Floor

Lounge	3015 x 5251mm	9'11" x 17'3"
Kitchen/ Dining	4919 x 2766mm	16'2" x 9'1"
WC	1948 x 1114mm	6'5" x 3'8"
Utility	1948 x 1592mm	6'5" x 5'3"
Garage	2681 x 5185mm	8'10" x 17'10"

(Approximate dimensions)



First Floor

Bedroom 1	3018 x 4098mm	9'11" x 13'5"
En Suite	1272 x 2165mm	4'2" x 7'1"
Bedroom 2	2727 x 3895mm	8'11" x 12'9"
Bedroom 3	2605 x 4009mm	8'7" x 13'2"
Bedroom 4	2251 x 4212mm	7'5" x 13'10"
Bathroom	1916 x 2272mm	6'3" x 7'5"

(Approximate dimensions)

KEY	B	Boiler	f/f	Fridge/freezer space	↔	Dimension location
	ST	Store	dw	Dishwasher space		
	wm	Washing machine space	td	Tumble dryer space		

barratthomes.co.uk

FENTON

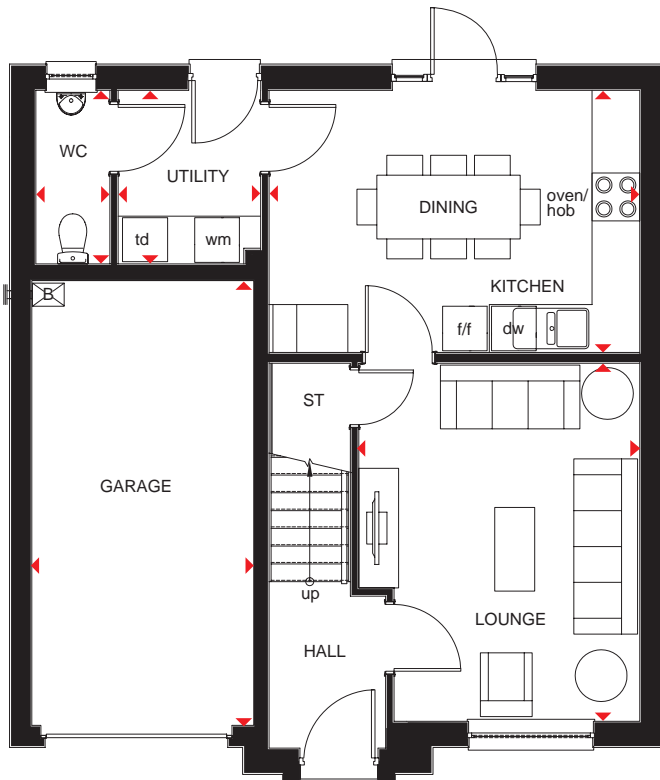
4 BEDROOM DETACHED HOME



- Large, front-aspect lounge with room for relaxing and entertaining
- Open-plan fitted kitchen with dining area and access to the rear garden, plus a separate utility room and WC
- Integral garage for added convenience and security
- First floor comprises four double bedrooms, the main bedroom with en suite, and a family bathroom



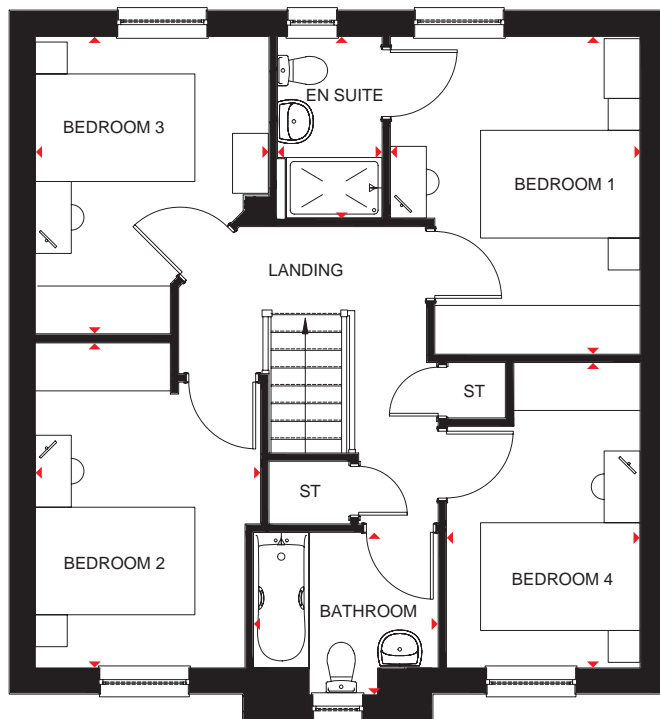
BARRATT
HOMES



Ground Floor

Lounge	3527 x 4483mm	11'7" x 14'8"
Kitchen/Dining	4652 x 3280mm	15'3" x 10'9"
Utility	1789 x 2141mm	5'10" x 7'0"
WC	929 x 2141mm	3'1" x 7'0"
Garage	2789 x 5520mm	9'2" x 18'1"

(Approximate dimensions)



First Floor

Bedroom 1	3129 x 3984mm	10'3" x 13'1"
En Suite	1313 x 2279mm	4'4" x 7'6"
Bedroom 2	2823 x 4074mm	9'3" x 13'4"
Bedroom 3	2929 x 3729mm	9'7" x 12'3"
Bedroom 4	2426 x 3829mm	8'0" x 12'7"
Bathroom	2316 x 2038mm	7'7" x 6'8"

(Approximate dimensions)

KEY

B	Boiler	f/f	Fridge/freezer space	◄ ►	Dimension location
ST	Store	dw	Dishwasher space		
wm	Washing machine space	td	Tumble dryer space		

barratthomes.co.uk

KINLOCH

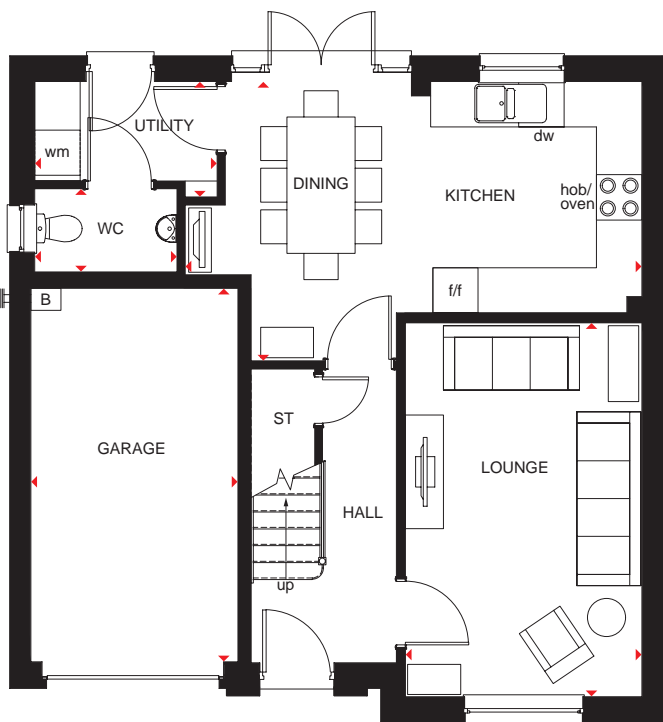
4 BEDROOM DETACHED HOME



- The large integral garage and front-aspect lounge make up the front of the home
- Comfortable, welcoming kitchen/dining space with a separate utility area and glazed French double doors opening onto the rear garden
- Upstairs is the main bedroom with en suite, three further double bedrooms and a family bathroom



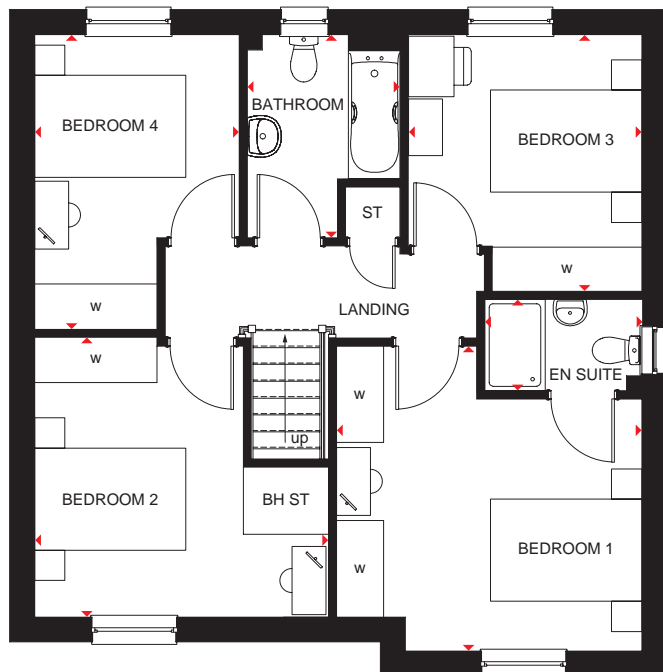
BARRATT
— HOMES —



Ground Floor

Lounge	3127 x 4946mm	10'3" x 16'3"
Kitchen/Dining	6042 x 3695mm	19'10" x 12'1"
WC	1884 x 1100mm	6'2" x 3'7"
Utility	2414 x 1526mm	7'11" x 5'0"
Garage	2736 x 4942mm	9'0" x 16'3"

[Approximate dimensions]



First Floor

Bedroom 1	4039 x 4034mm	13'3" x 13'3"
En Suite	2079 x 1210mm	6'10" x 4'0"
Bedroom 2	3886 x 3700mm	12'9" x 12'2"
Bedroom 3	3092 x 3398mm	10'2" x 11'2"
Bedroom 4	2708 x 3898mm	8'11" x 12'9"
Bathroom	2020 x 2689mm	6'8" x 8'10"

[Approximate dimensions]

KEY	B	Boiler	wm	Washing machine space	w	Wardrobe space
	ST	Store	f/f	Fridge/freezer space	◀▶	Dimension location
	BH ST	Bulkhead store	dw	Dishwasher space		

barratthomes.co.uk

CAMPBELL

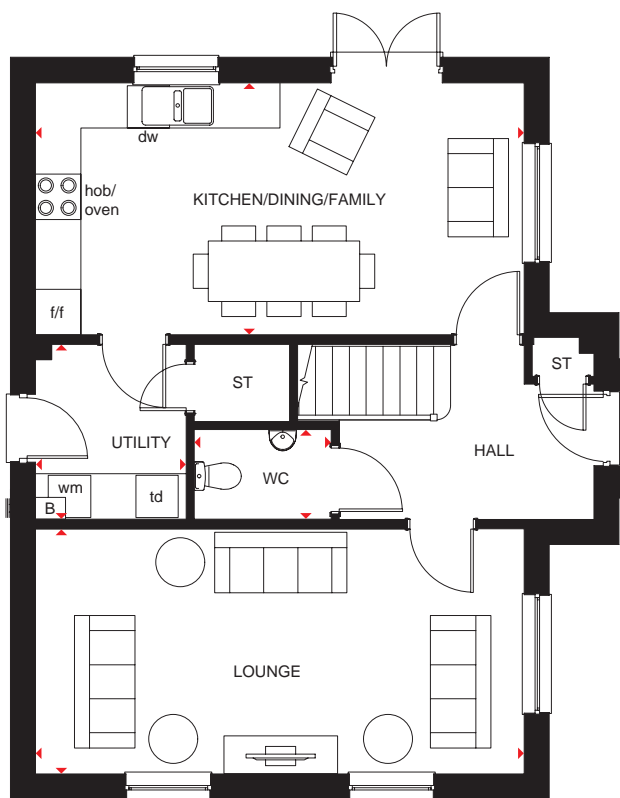
4 BEDROOM DETACHED HOME



- Large open-plan kitchen includes a dual-aspect dining area with access to the garden via French doors, and a separate utility
- There's plenty of room to relax in comfort in the spacious lounge
- Upstairs is a main bedroom with en suite shower room
- Three further double bedrooms and a family bathroom make this a great family home



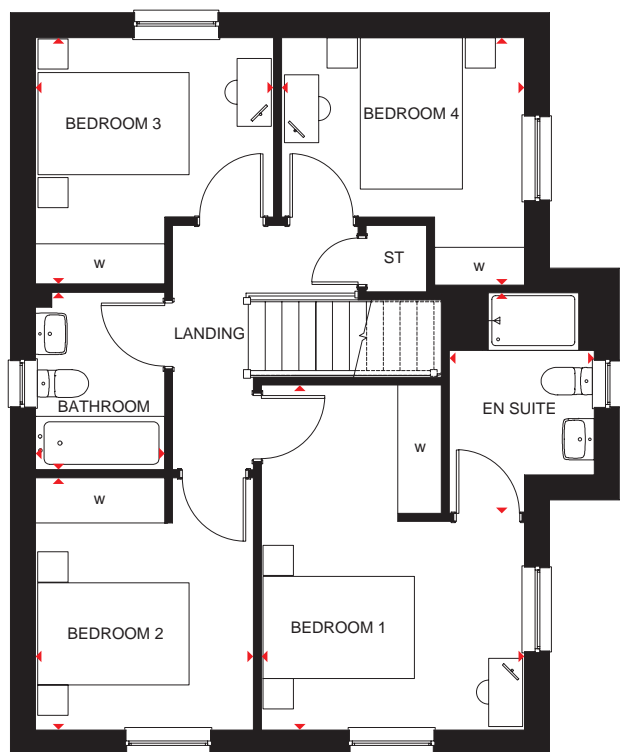
BARRATT
— HOMES —



Ground Floor

Lounge	6464 x 3238mm	21'2" x 10'7"
Kitchen/ Dining/Family	6464 x 3330mm	21'2" x 10'11"
Utility	2004 x 2311mm	6'7" x 7'7"
WC	1813 x 1186mm	5'11" x 3'11"

(Approximate dimensions)



First Floor

Bedroom 1	3478 x 4564mm	11'5" x 15'0"
En Suite	1917 x 2915mm	6'3" x 9'7"
Bedroom 2	2881 x 3337mm	9'5" x 10'11"
Bedroom 3	3147 x 3258mm	10'4" x 10'8"
Bedroom 4	3212 x 3273mm	10'6" x 10'9"
Bathroom	1707 x 2350mm	5'7" x 7'9"

(Approximate dimensions)

KEY	B	Boiler	f/f	Fridge/freezer space	w	Wardrobe space
	ST	Store	dw	Dishwasher space	◀▶	Dimension location
	wm	Washing machine space	td	Tumble dryer space		

barratthomes.co.uk

DUNBAR

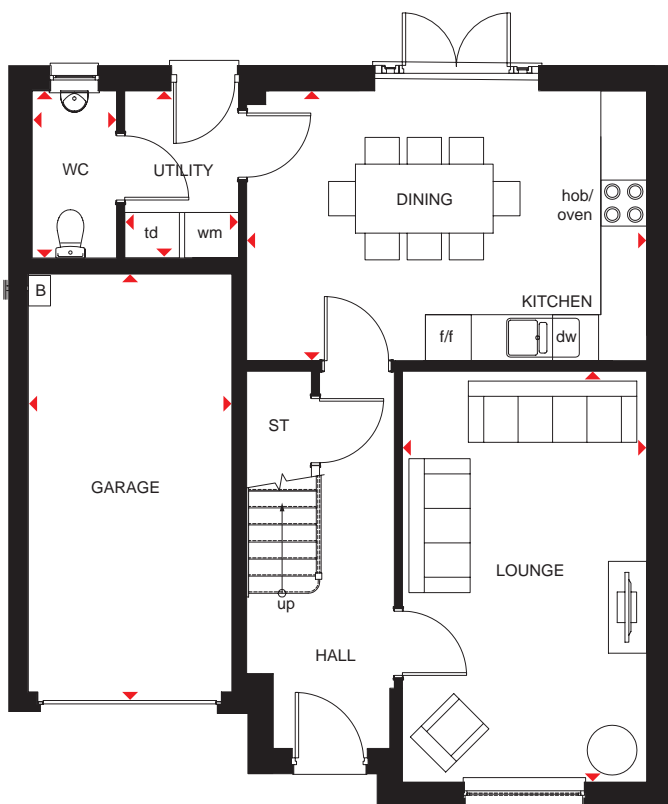
4 BEDROOM DETACHED HOME



- Spacious kitchen with dining area, separate utility, WC, and access to the rear garden via French doors
- Front-aspect lounge and an integral garage for added security complete the ground floor
- Upstairs are four double bedrooms, the main bedroom with en suite, and a family bathroom, making this a perfect family home



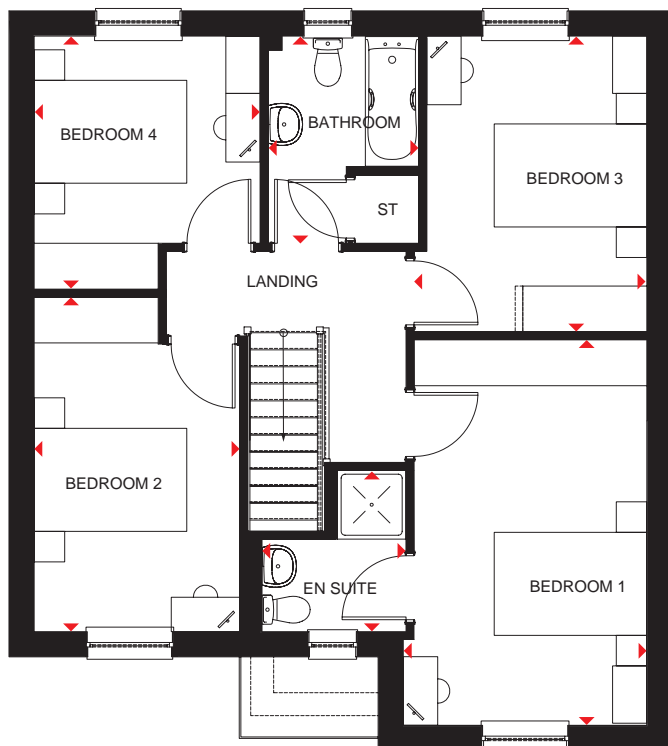
BARRATT
HOMES



Ground Floor

Lounge	3203 x 5351mm	10'6" x 17'7"
Kitchen/Dining	5226 x 3535mm	17'2" x 11'7"
Utility	1477 x 2146mm	4'10" x 7'0"
WC	1103 x 2146mm	3'7" x 7'0"
Garage	2652 X 5391mm	8'8" x 17'8"

(Approximate dimensions)



First Floor

Bedroom 1	3192 x 5052mm	10'6" x 16'7"
En suite	1887 x 2113mm	6'2" x 6'11"
Bedroom 2	2697 x 4384mm	8'10" x 14'5"
Bedroom 3	3057 x 3875mm	10'0" x 12'9"
Bedroom 4	2961 x 3315mm	9'9" x 10'11"
Bathroom	1975 x 2715mm	6'6" x 8'11"

(Approximate dimensions)

KEY	B	Boiler	wm	Washing machine space	td	Tumble dryer space
	ST	Store	f/f	Fridge/freezer space	◄►	Dimension location
	CYL	Cylinder	dw	Dishwasher space		

barratthomes.co.uk

DEAN

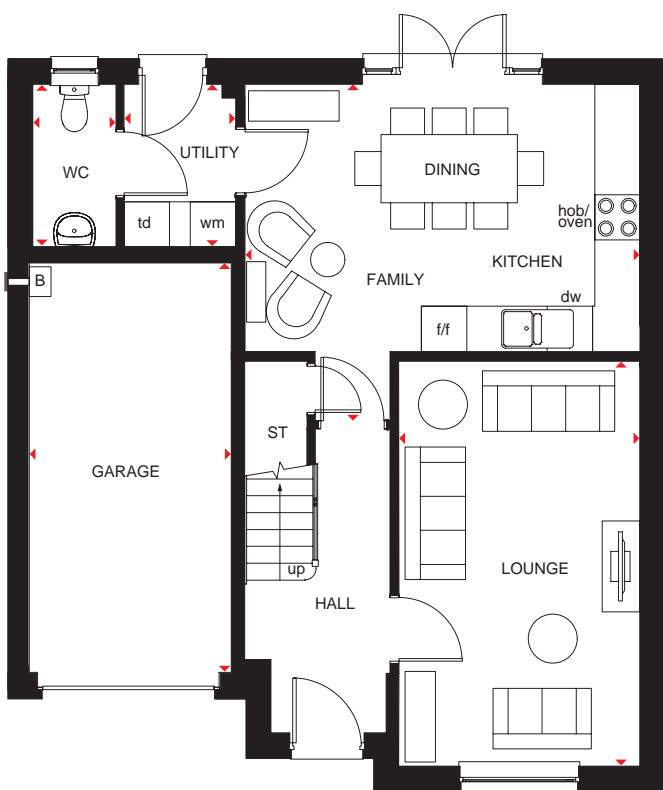
4 BEDROOM DETACHED HOME



- Spacious kitchen with dining and family areas, separate utility, WC, and access to the garden via French doors
- Front-aspect lounge and an integral garage for added security complete the ground floor
- Upstairs are four double bedrooms, the main bedroom with en suite, and a family bathroom, making this a perfect family home



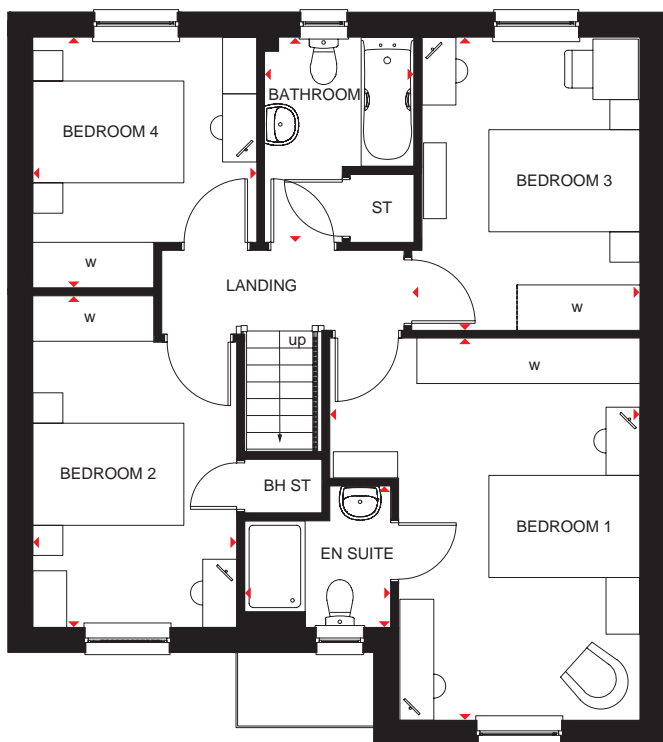
BARRATT
— HOMES —



Ground Floor

Lounge	3203 x 5351mm	10'6" x 17'7"
Kitchen/Dining/ Family	5226 x 4450mm	17'2" x 14'7"
Utility	1480 x 2146mm	4'10" x 7'0"
WC	1100 x 2146mm	3'7" x 7'0"
Garage	2673 x 5411mm	8'9" x 17'9"

(Approximate dimensions)



First Floor

Bedroom 1	4103 x 5052mm	13'6" x 16'7"
En Suite	1932 x 1868mm	6'4" x 6'2"
Bedroom 2	2697 x 4384mm	8'10" x 14'5"
Bedroom 3	3018 x 3875mm	9'11" x 12'9"
Bedroom 4	2961 x 3315mm	9'9" x 10'11"
Bathroom	1975 x 2715mm	6'6" x 8'11"

(Approximate dimensions)

KEY

B	Boiler	wm	Washing machine space	td	Tumble dryer space
ST	Store	f/f	Fridge/freezer space	w	Wardrobe space
BH ST	Bulkhead store	dw	Dishwasher space	◀ ▶	Dimension location

barratthomes.co.uk

BALLOCH

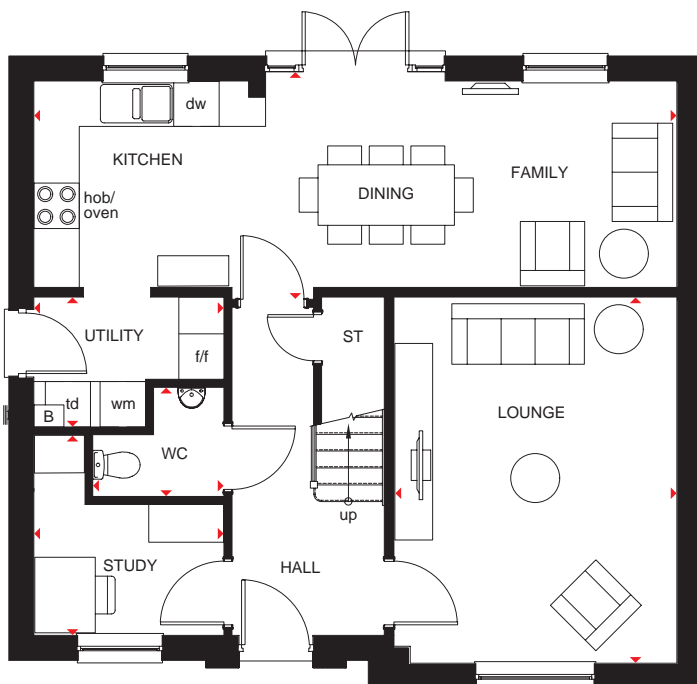
4 BEDROOM DETACHED HOME



- Beautifully presented family home, fully designed for flexible living
- As you enter the home, you will find the study, WC and large front-aspect lounge off the main hallway
- Open-plan kitchen complete with dining space, family area and utility at the back of the home, with glazed double doors opening out onto the outdoor space
- Upstairs has four corner double bedrooms, complete with one en suite and a main bathroom



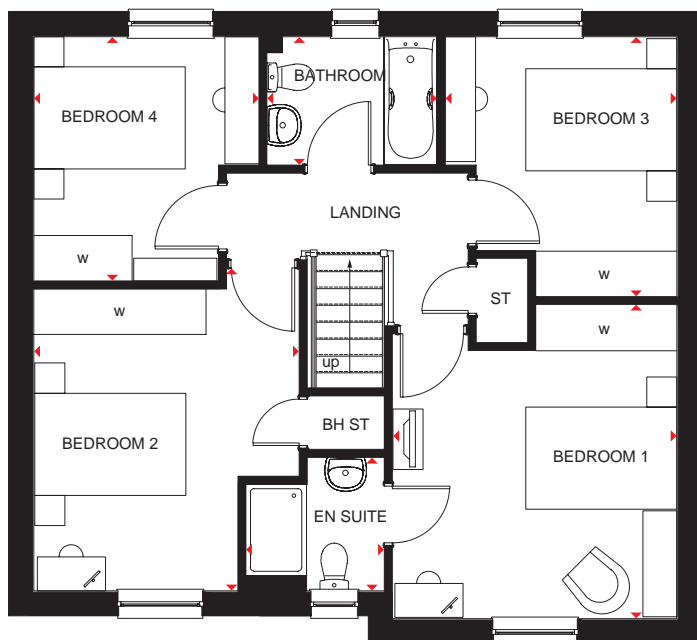
BARRATT
— HOMES —



Ground Floor

Lounge	3741 x 4843mm	12'3" x 15'11"
Kitchen/ Dining/Family	8502 x 2886mm	27'11" x 9'6"
WC	1734 x 1445mm	5'8" x 4'9"
Utility	2515 x 1717mm	8'3" x 5'8"
Study	2514 x 2651mm	8'3" x 8'8"

[Approximate dimensions]



First Floor

Bedroom 1	3763 x 4156mm	12'4" x 13'8"
En Suite	1830 x 1767mm	6'0" x 5'10"
Bedroom 2	3509 x 4271mm	11'6" x 14'0"
Bedroom 3	3065 x 3436mm	10'1" x 11'3"
Bedroom 4	2978 x 3231mm	9'9" x 10'7"
Bathroom	2250 x 1698mm	7'5" x 5'7"

[Approximate dimensions]

KEY	B	Boiler	wm	Washing machine space	td	Tumble dryer space
	ST	Store	f/f	Fridge/freezer space	w	Wardrobe space
	BH ST	Bulkhead store	dw	Dishwasher space	◀▶	Dimension location

barratthomes.co.uk

All images used are for illustrative purposes. These and the dimensions given are illustrative for this house type and individual properties may differ. Please check with your Sales Adviser in respect of individual properties. We give maximum dimensions within each room which includes areas of fixtures and fittings including fitted furniture. These dimensions should not be used for carpet or flooring sizes, appliance spaces or items of furniture. All images, photographs and dimensions are not intended to be relied upon for, nor to form part of, any contract unless specifically incorporated in writing into the contract. Housetype may include Solar PV Panels, please speak to Sales Adviser for further details.

BLLH 02HD/02GD DS00/SP442659

CROMBIE

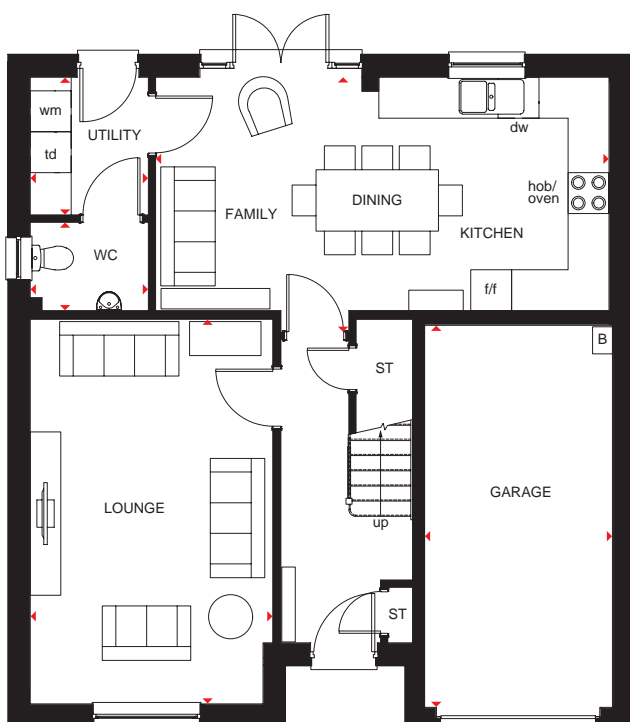
4 BEDROOM DETACHED HOME



- Impressive four bedroom detached home, ideal for new or growing families
- A comfortable front-facing living room offset from the hallway
- Light and airy all-in-one kitchen and dining area opens out onto the rear garden, with a separate utility and WC
- Upstairs offers one main bedroom and en suite, three double bedrooms, a family bathroom and study



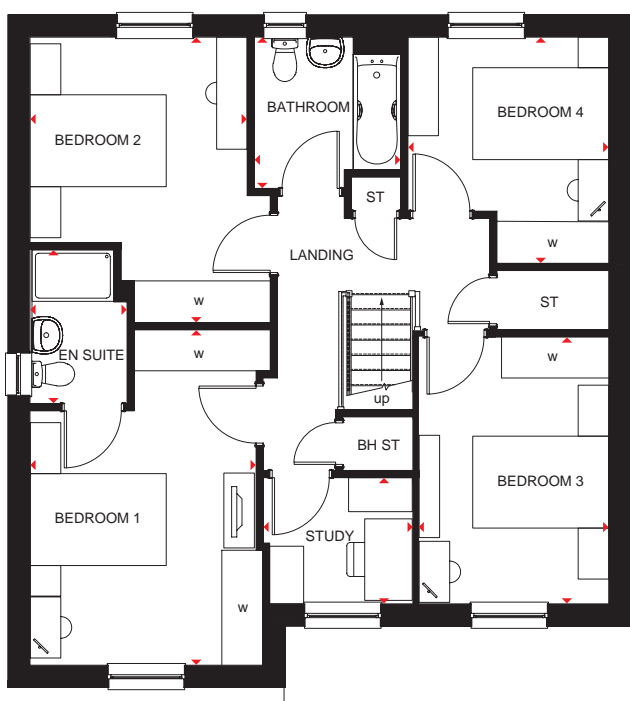
BARRATT
HOMES



Ground Floor

Lounge	3564 x 5653mm	11'8" x 18'7"
Kitchen/Dining/Family	6658 x 3745mm	21'10" x 12'3"
Utility	1737 x 2025mm	5'8" x 6'8"
WC	1737 x 1300mm	5'8" x 4'3"
Garage	2758 x 5612mm	9'1" x 18'5"

(Approximate dimensions)



First Floor

Bedroom 1	3417 x 4924mm	11'3" x 16'2"
En Suite	1422 x 2260mm	4'8" x 7'5"
Bedroom 2	3527 x 4197mm	11'7" x 13'9"
Bedroom 3	2786 x 3919mm	9'2" x 12'10"
Bedroom 4	2952 x 3323mm	9'8" x 10'11"
Study	2192 x 1853mm	7'2" x 6'1"
Bathroom	2150 x 2224mm	7'1" x 7'4"

(Approximate dimensions)

KEY

B	Boiler	wm	Washing machine space	td	Tumble dryer space
ST	Store	f/f	Fridge/freezer space	w	Wardrobe space
BH ST	Bulkhead store	dw	Dishwasher space	◀▶	Dimension location

barratthomes.co.uk

All images used are for illustrative purposes. These and the dimensions given are illustrative for this house type and individual properties may differ. Please check with your Sales Adviser in respect of individual properties. We give maximum dimensions within each room which includes areas of fixtures and fittings including fitted furniture. These dimensions should not be used for carpet or flooring sizes, appliance spaces or items of furniture. All images, photographs and dimensions are not intended to be relied upon for, nor to form part of, any contract unless specifically incorporated in writing into the contract. Housetype may include Solar PV Panels, please speak to Sales Adviser for further details. BCIE 02HD/02GD DS00 /SP440465

NEW HOMES QUALITY CODE

Housebuilders and developers who build new homes will be expected to register with the New Homes Quality Board (NHQB). As long as a housebuilder or developer has followed the correct registration process, including completing the necessary training, introducing a complaints procedure, and following other processes and procedures that are needed to meet the requirements of this New Homes Quality Code (the code), they will become a registered developer.

Registered developers agree to follow the code and the New Homes Ombudsman Service, including accepting the decisions of the New Homes Ombudsman in relation to dealings with customers. If a registered developer does not meet the required standards, or fails to accept and act in line with the decisions of the New Homes Ombudsman, they may have action taken against them, including being removed from the register of registered developers.

The code sets out the requirements that registered developers must meet. The code may be updated from time to time to reflect changes to industry best practice as well as the decisions of the New Homes Ombudsman Service.

All homes built by registered developers must meet building-safety and other regulations. All registered developers should aim to make sure there are no snags or defects in their properties before the keys are handed over to a customer. If there are any snags or defects, these should be put right within the agreed timescales.

WHAT THE CODE COVERS

For the purposes of this code, 'customer' means a person who is buying or intends to buy a new home which they will live in or give to another person. (If a new home is being bought in joint names, 'the customer' includes all the joint customers.) However, the New Homes Quality Board have also started work to consider other groups of customers and what they should be able to expect from a new home. This includes shared owners and people who are buying a new home to let to other people. Any changes the New Homes Quality Board make to the code to reflect the needs of other groups of customers will be developed through consultation, and they will continually assess and review the effectiveness of the code, and any new laws or regulations that apply. Other areas which are not covered by the code are claims for loss of property value or blight (where a property falls in value or becomes difficult to sell because of major public work in the area), personal injury or claims that are not covered by the scheme rules of the New Homes Ombudsman Service.



