



CENTURION VILLAGE

— LEYLAND —



CENTURION VILLAGE

LEYLAND

Longmeanygate, Midge Hall,
Leyland, Lancashire PR26 7TB

KEY

- The Greenwood**
3 bedroom home
- The Hadley**
3 bedroom home
- The Archford**
3 bedroom home
- The Fairway**
3 bedroom home
- The Kennett**
3 bedroom home
- The Bradgate**
4 bedroom home
- The Hertford**
4 bedroom home
- The Avondale**
4 bedroom home
- The Kirkdale**
4 bedroom home
- The Ingleby**
4 bedroom home
- The Holden**
4 bedroom home
- The Meriden**
4 bedroom home
- Affordable Housing**

2021 Building Regulations

Marketing Suite & Show Homes



Attenuation pond



Hedges



Trees



Robin (Open Fronted) Box



House Sparrow Nesting Terrace



Small Bird Nest Box



Bat Box



Swift Nesting Box



Electric Vehicle
Charging Points



Positioning of our sustainability features are subject to change. Speak to a Sales Adviser for more information.

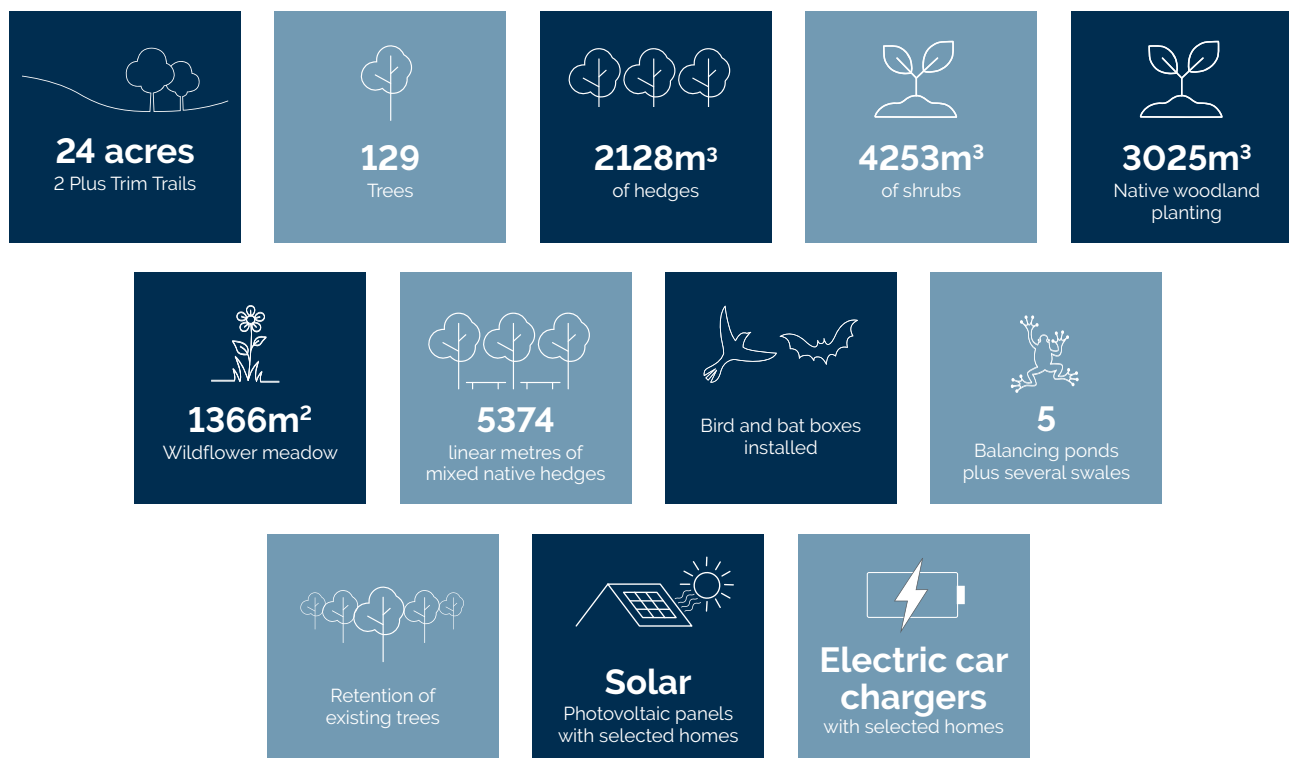
CREATING A SUSTAINABLE COMMUNITY

WHERE FAMILIES AND NATURE CAN THRIVE

At David Wilson Homes, we do more than simply craft beautiful homes and desirable developments.

We design and build great places that meet the highest standards and that promote sustainable healthy and happy living for our customers.

We know we must give our customers confidence that their homes are designed and built to meet the challenges of the future. We do this through creating places where people and nature can thrive.



THE GREENWOOD

THREE BEDROOM END-TERRACED HOME



Individual plots may vary, please speak to the Sales Adviser



The Greenwood is a flexible home designed over three floors. The ground floor has a kitchen that flows into dining and family areas, with a large walk-in glazed bay leading to the garden – and perfect extended living space in good weather. A study and

a utility cupboard are also on the ground floor, while a spacious lounge and master bedroom with en suite are on the first floor. Upstairs again, and a further two double bedrooms and the family bathroom are on the top floor, making this a great family home.



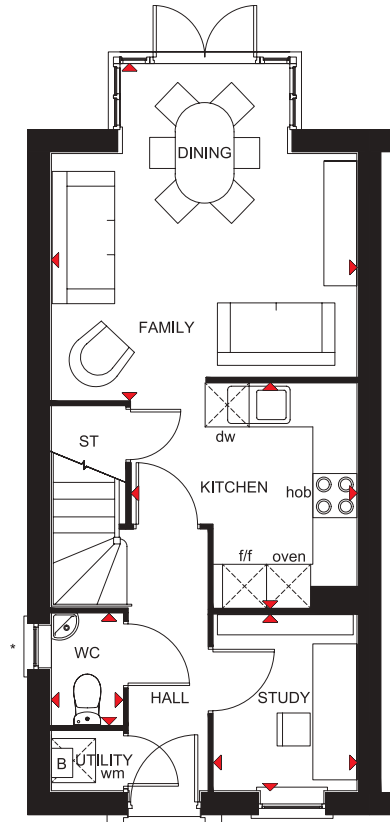
DAVID WILSON HOMES
WHERE QUALITY LIVES

THE GREENWOOD

THREE BEDROOM END-TERRACED HOME

Key

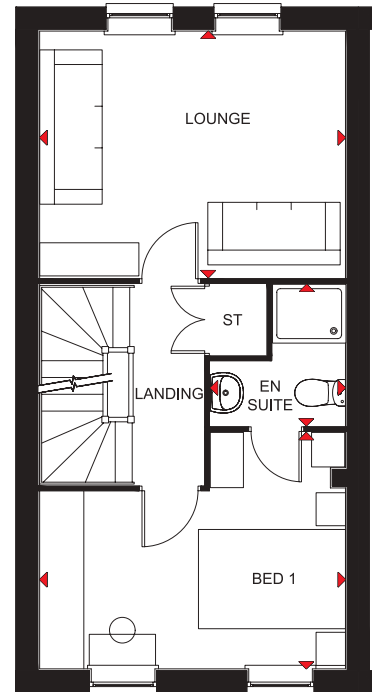
B	Boiler	wm	Washing machine space	◀ ▶	Dimension location
ST	Store	dw	Dishwasher space		
f/f	Fridge/freezer space	RL	Roof light		



Ground Floor

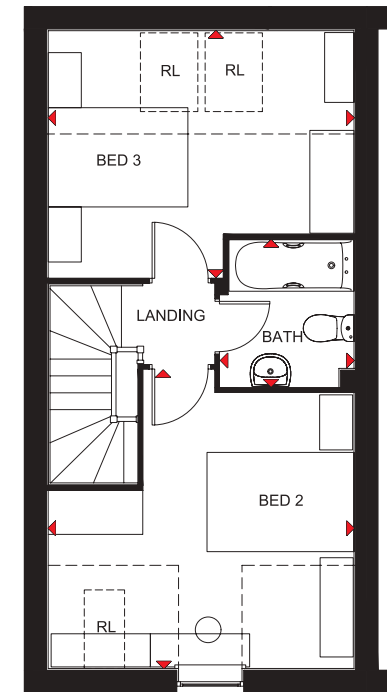
Family/Dining	4160 x 4582 mm	13'8" x 15'0"
Kitchen	3070 x 3070 mm	10'0" x 10'0"
Study	2396 x 1959 mm	7'10" x 6'5"
WC	1512 x 968 mm	4'11" x 3'2"

*Window may be omitted on certain plots.
Speak to a Sales Adviser for details on individual plots.



First Floor

Lounge	4160 x 3356 mm	13'8" x 11'0"
Bedroom 1	4160 x 3217 mm	13'8" x 10'7"
En suite	1838 x 1927 mm	6'0" x 6'4"



Second Floor

Bedroom 2	4160 x 4062 [†] mm	13'8" x 13'3" [†]
Bedroom 3	4160 x 3356 [†] mm	13'8" x 11'0" [†]
Bathroom	2000 x 1826 mm	6'7" x 6'0"

[†]Overall floor dimension includes lowered ceiling areas

We are on the New Homes Quality Code register of registered developers. "We" refers to the Barratt Developments PLC group brands including Barratt London, Barratt Homes and David Wilson Homes. All images used are for illustrative purposes. These and the dimensions given are illustrative for this house type and individual properties may differ. Please check with your Sales Adviser in respect of individual properties. We give maximum dimensions within each room which includes areas of fixtures and fittings including fitted furniture. These dimensions should not be used for carpet or flooring sizes, appliance spaces or items of furniture. All images, photographs and dimensions are not intended to be relied upon for, nor to form part of, any contract unless specifically incorporated in writing into the contract.

T322-E-7DS02/SP395367

dwh.co.uk



DAVID WILSON HOMES
WHERE QUALITY LIVES

THE KENNETT

THREE BEDROOM TERRACED HOME



Individual plots may vary, please speak to the Sales Adviser



Intelligently designed over three floors, The Kennett is a good-sized end-terraced family home, ideal for flexible modern living. The open-plan kitchen on the ground floor incorporates a dining area opening out onto the rear garden. A lobby

separating the kitchen from the spacious bay-fronted lounge leads upstairs. Here are two double bedrooms, the family bathroom and access to the second floor, which is entirely occupied by a spacious master bedroom with en suite.



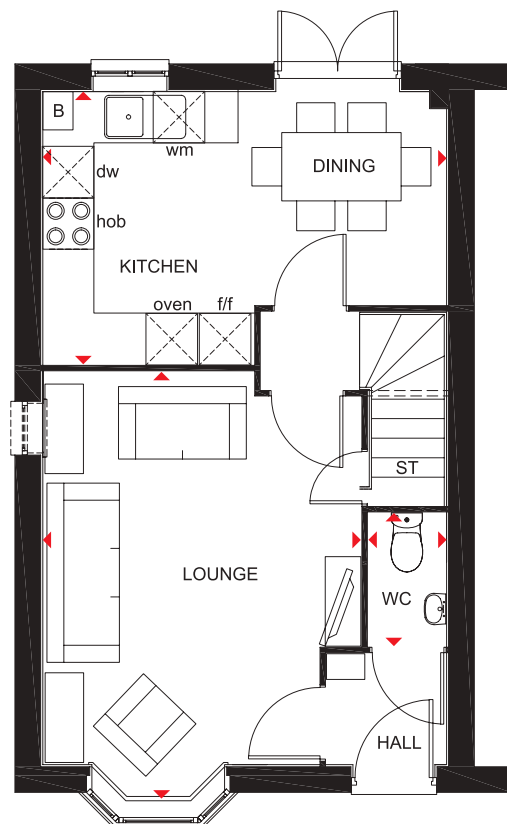
DAVID WILSON HOMES
WHERE QUALITY LIVES

THE KENNETT

THREE BEDROOM TERRACED HOME

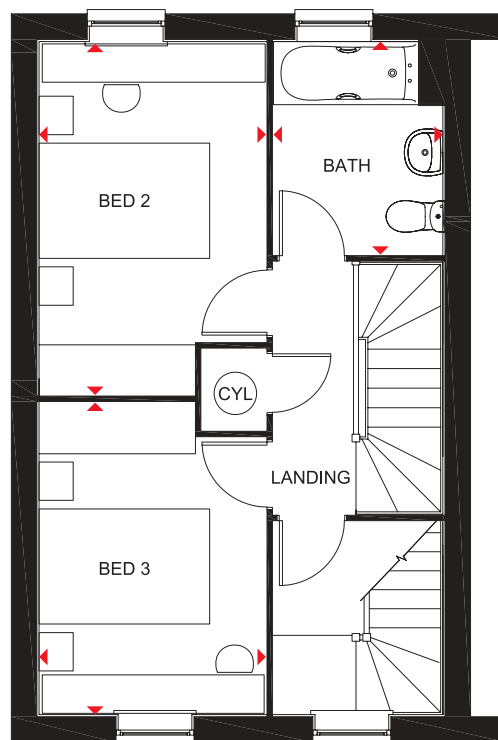
Key

B	Boiler	f/f	Fridge/freezer space	◄►	Dimension location
ST	Store	wm	Washing machine space		
CYL	Cylinder	dw	Dishwasher space		



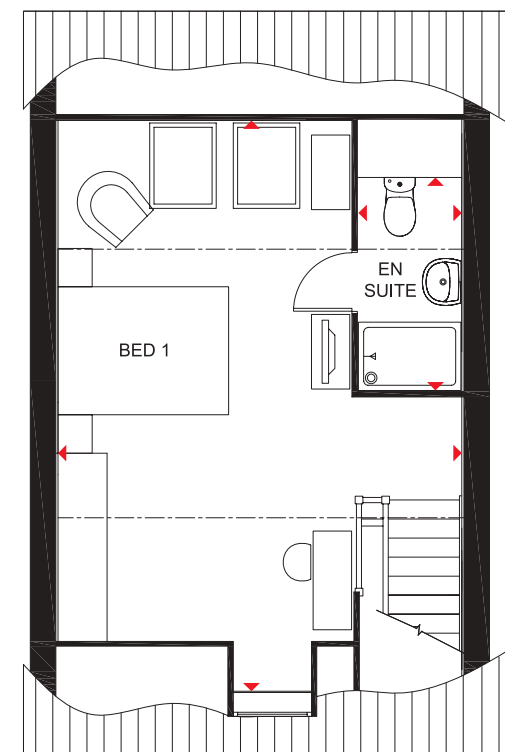
Ground Floor

Lounge	5001 x 3729 mm	16'4" x 12'2"
Kitchen/Dining	4733 x 3197 mm	15'6" x 10'5"
WC	1561 x 915 mm	5'1" x 3'0"



First Floor

Bed 2	4116 x 2659 mm	13'6" x 8'8"
Bed 3	3658 x 2659 mm	12'0" x 8'8"
Bath	2498 x 1985 mm	8'2" x 6'6"



Second Floor

Bed 1	6690 x 4733* mm	21'11" x 15'6"*
En suite	1210 x 2497* mm	3'11" x 8'2"*

*Overall floor dimension includes lowered ceiling areas

All images used are for illustrative purposes. These and the dimensions given are illustrative for this house type and individual properties may differ. Please check with your Sales Adviser in respect of individual properties. We give maximum dimensions within each room which includes areas of fixtures and fittings including fitted furniture. These dimensions should not be used for carpet or flooring sizes, appliance spaces or items of furniture. All images, photographs and dimensions are not intended to be relied upon for, nor to form part of, any contract unless specifically incorporated in writing into the contract. T310-E-7DS01 / SP342562

dwh.co.uk

CONSUMER
CODE FOR
HOME BUILDERS
www.consumercode.co.uk



DAVID WILSON HOMES
WHERE QUALITY LIVES

THE AVONDALE

FOUR BEDROOM DETACHED HOME



Individual plots may vary, please speak to the Sales Adviser



This tasteful, double-fronted, detached home, with elegant sash-style windows, provides plenty of flexible living space. The Avondale's generous open-plan kitchen has a dedicated dining area with an attractive bay window, and a separate utility room.

A large, triple-aspect lounge leads to the garden via French doors and a separate study provides quiet space to work. Upstairs are four double bedrooms, the master with en suite, and a family bathroom with bath and shower.



DAVID WILSON HOMES

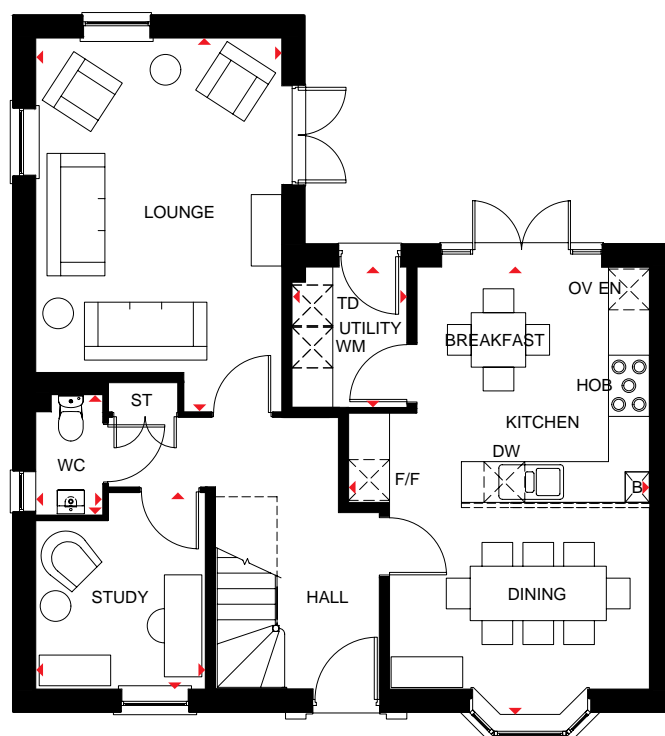
WHERE QUALITY LIVES

THE AVONDALE

FOUR BEDROOM HOME

Key

ST	Store	f/f	Fridge/freezer space	dw	Dishwasher space	◀▶	Dimension location
CYL	Cylinder	wm	Washing machine space	td	Tumble dryer space		



Ground Floor

Lounge	5490 x 3615 mm	18'0" x 11'10"
Kitchen/ Breakfast/Dining	6600 x 4418 mm	21'7" x 14'6"
Utility	2062 x 1688 mm	6'9" x 5'6"
Study	2885 x 2490 mm	9'5" x 8'2"
WC	1768 x 983 mm	5'10" x 3'3"



First Floor

Bedroom 1	5587 x 3615 mm	18'4" x 11'10"
En suite	2222 x 1435 mm	7'3" x 4'8"
Bedroom 2	5227 x 2800 mm	17'1" x 9'2"
Bedroom 3	3566 x 3316 mm	11'8" x 10'10"
Bedroom 4	3893 x 2550 mm	12'9" x 8'4"
Bathroom	2871 x 1929 mm	9'5" x 6'4"

All images used are for illustrative purposes. These and the dimensions given are illustrative for this house type and individual properties may differ. Please check with your Sales Adviser in respect of individual properties. We give maximum dimensions within each room which includes areas of fixtures and fittings including fitted furniture. These dimensions should not be used for carpet or flooring sizes, appliance spaces or items of furniture. All images, photographs and dimensions are not intended to be relied upon for, nor to form part of, any contract unless specifically incorporated in writing into the contract.

DWH 2017 H456 --X7 DS07/SP422090

dwh.co.uk



DAVID WILSON HOMES

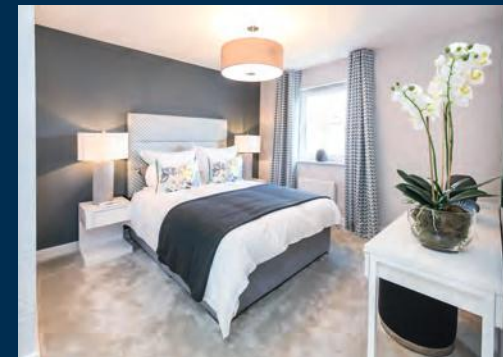
WHERE QUALITY LIVES

THE MERIDEN

FOUR BEDROOM HOME



Individual plots may vary, please speak to the Sales Adviser



The Meriden is a bright place to call home with its attractive bay-fronted lounge and a light-filled glazed bay in the kitchen/dining area leading to the garden. A family space in the kitchen increases flexibility for

living and entertaining, while a separate utility room adds practicality and an integral garage provides extra security. Upstairs are four double bedrooms, the generous master with en suite, and a family bathroom with shower.



DAVID WILSON HOMES

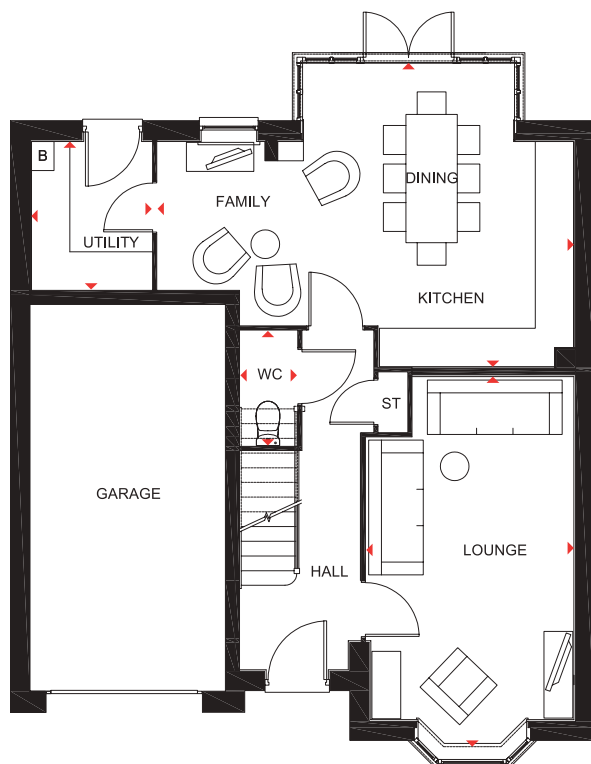
WHERE QUALITY LIVES

THE MERIDEN

FOUR BEDROOM HOME

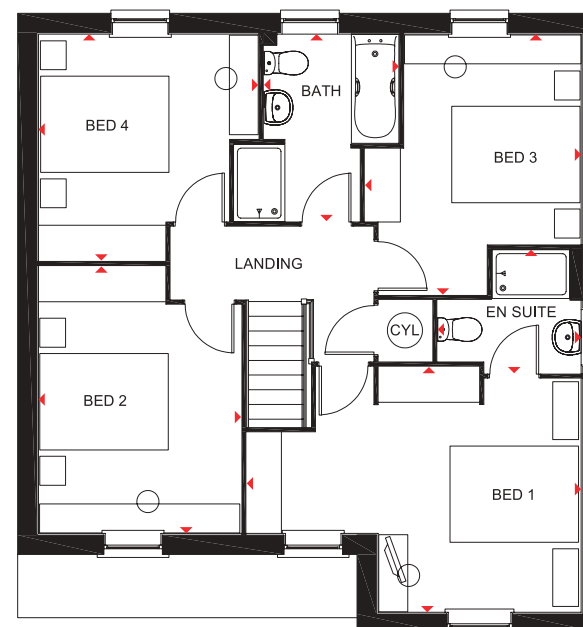
Key

B	Boiler	CYL	Cylinder
ST	Store	◀▶	Dimension location



Ground Floor

Lounge	5767 x 3235 mm	18'11" x 10'7"
Kitchen/Family/ Dining	6486 x 4735 mm	21'3" x 15'6"
Utility	2305 x 1877 mm	7'7" x 6'2"
WC	1786 x 882 mm	5'10" x 2'11"



First Floor

Bedroom 1	5208 x 3822 mm	17'1" x 12'6"
En Suite	2235 x 1923 mm	7'4" x 6'4"
Bedroom 2	4161 x 3155 mm	13'8" x 10'4"
Bedroom 3	4056 x 3365 mm	13'3" x 11'0"
Bedroom 4	3527 x 3423 mm	11'7" x 11'3"
Bathroom	2913 x 2100 mm	9'6" x 6'11"

All images used are for illustrative purposes only. Floor plans are intended to give a general indication of the proposed floor layout only. The dimensions are accurate to within + or - 50mm but should not be used for carpet or flooring sizes, appliance spaces or items of furniture. Please ask our Sales Adviser for details of the treatments specified for individual plots. Individual features such as windows, brick and other materials' colours may vary, as may drainage, heating and electrical layouts. All images, photographs and dimensions are not intended to form part of any contract or warranty unless specifically incorporated in writing into the contract.

375034

dwh.co.uk



DAVID WILSON HOMES
WHERE QUALITY LIVES

THE FAIRWAY

THREE BEDROOM DETACHED HOME



Individual plots may vary, please speak to the Sales Adviser



The Fairway demonstrates a clever use of design on a corner plot to create an attractive detached family home. Both the large open-plan kitchen, with dining and family areas, and the long lounge are bright

and airy places thanks to French doors leading from both rooms to the rear garden. Upstairs, a galleried landing leads to two double bedrooms - the master with en suite - a single bedroom and the family bathroom.



DAVID WILSON HOMES
WHERE QUALITY LIVES

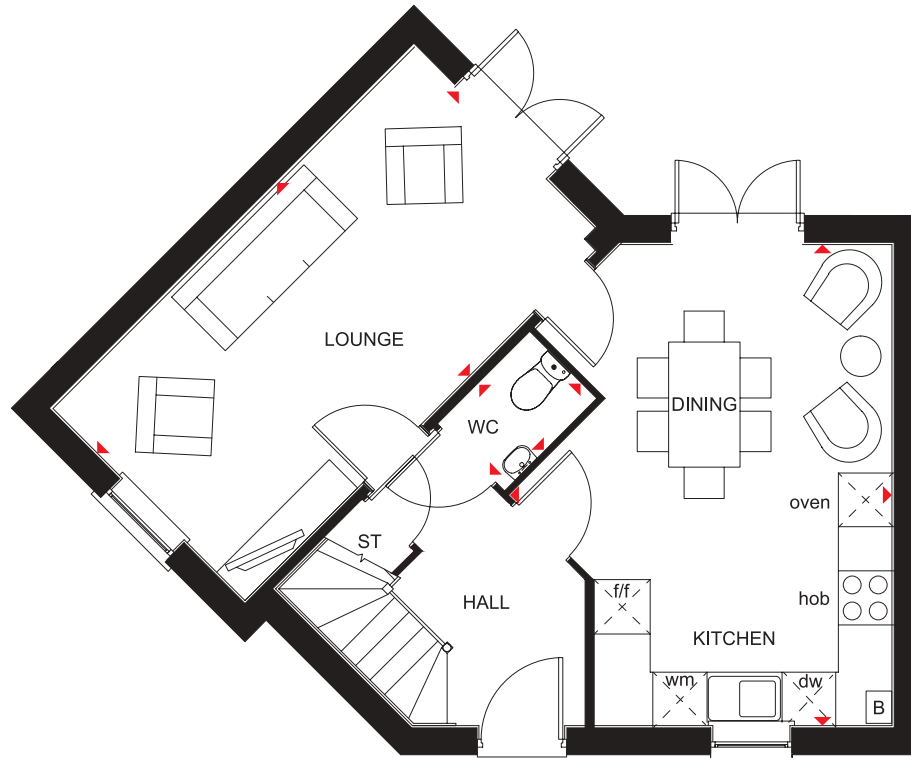
THE FAIRWAY

THREE BEDROOM DETACHED HOME

Key

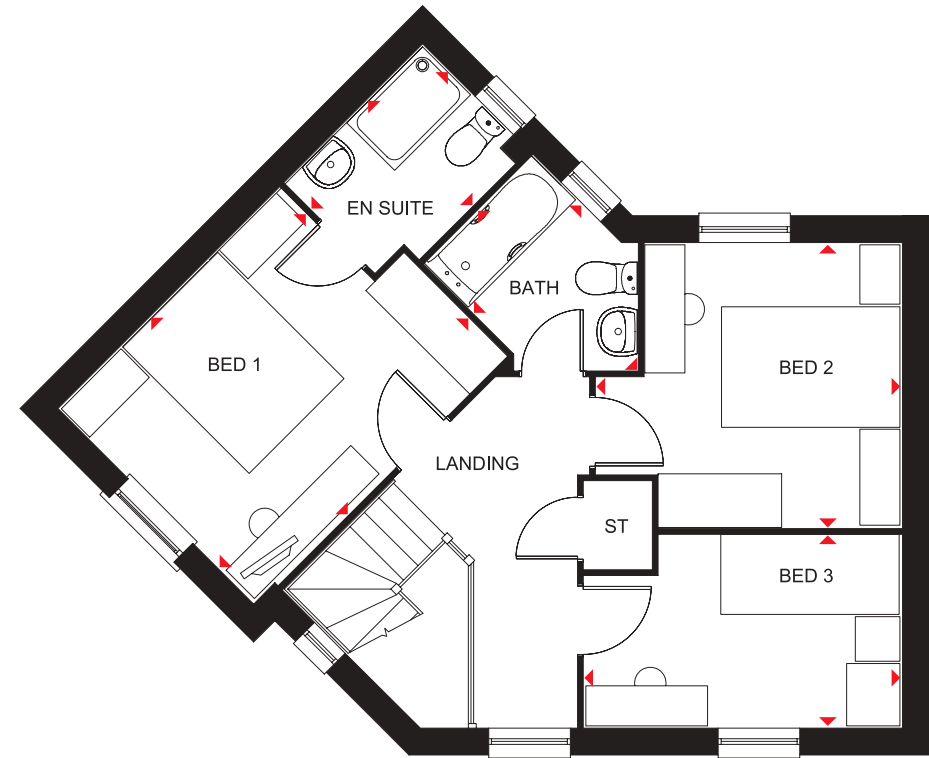
ST Store
B Boiler
f/f Fridge/freezer space

wm Washing machine space
dw Dishwasher space
◀▶ Dimension location



Ground Floor

Lounge	5727 x 3050 mm	18'9" x 10'0"
Kitchen/Dining	5390 x 4276 mm	17'8" x 14'0"
WC	1440 x 1025 mm	4'8" x 3'4"



First Floor

Bed 1	3938 x 3111 mm	12'11" x 10'2"
En Suite	2161 x 1650 mm	7'1" x 5'5"
Bed 2	3165 x 3406 mm	10'5" x 11'2"
Bed 3	3542 x 2136 mm	11'7" x 7'0"
Bath	2518 x 1700 mm	8'3" x 5'7"

All images used are for illustrative purposes. These and the dimensions given are illustrative for this house type and individual properties may differ. Please check with your Sales Adviser in respect of individual properties. We give maximum dimensions within each room which includes areas of fixtures and fittings including fitted furniture. These dimensions should not be used for carpet or flooring sizes, appliance spaces or items of furniture. All images, photographs and dimensions are not intended to be relied upon for, nor to form part of, any contract unless specifically incorporated in writing into the contract.

dwh.co.uk



DAVID WILSON HOMES
WHERE QUALITY LIVES

THE BRADGATE

FOUR BEDROOM DETACHED HOME



Individual plots may vary, please speak to the Sales Adviser



This beautiful home has no shortage of space. The open-plan kitchen with dining area has plenty of room for the whole family and boasts a glazed bay that opens out onto the rear garden through French doors, while the airy sitting room benefits from

a feature bay window. Upstairs, the generous master bedroom benefits from an en suite shower room. The further three double bedrooms all share a stylish family bathroom.



DAVID WILSON HOMES

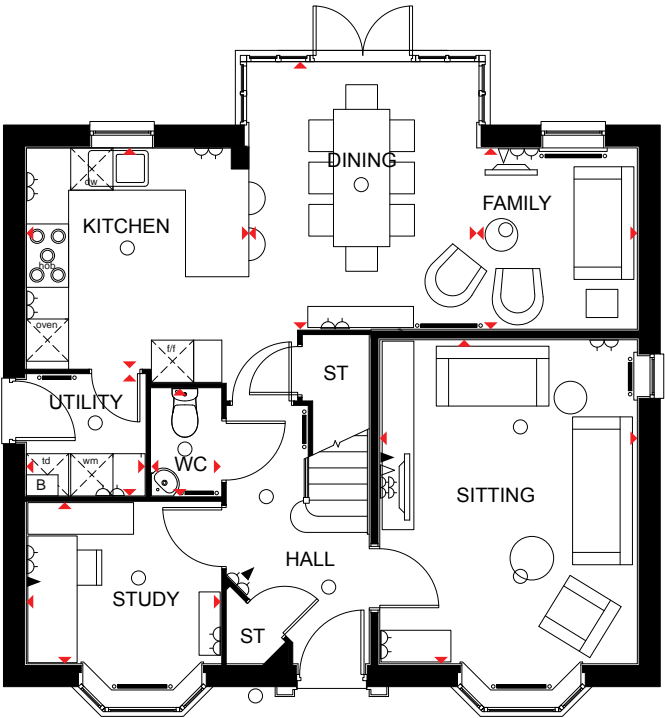
WHERE QUALITY LIVES

THE BRADGATE

FOUR BEDROOM DETACHED HOME

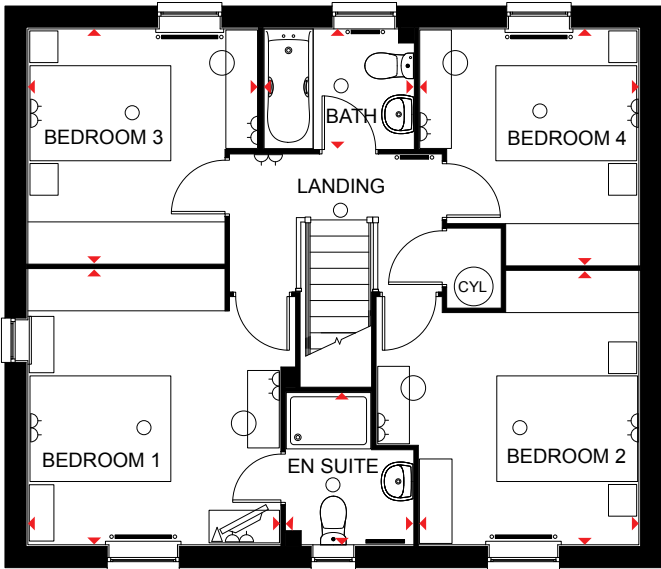
Key

○ Light fitting	◀ Telephone outlet point	— Radiator	B Boiler	CYL Cylinder	wm Washing machine space	td Tumble dryer space
⏏ Electric socket	◁ T.V. aerial socket	— Towel radiator	ST Store	f/f Fridge/freezer space	dw Dishwasher space	◀▶ Dimension location



Ground Floor

Sitting	4602 x 3658 mm	15'1" x 12'0"
Kitchen	3160 x 3130 mm	10'4" x 10'3"
Dining	3800 x 3236 mm	12'5" x 10'7"
Family	2575 x 2281 mm	8'5" x 7'5"
Study	2762 x 2295 mm	9'0" x 7'6"
Utility	1687 x 1724 mm	5'6" x 5'7"
WC	1524 x 986 mm	5'0" x 3'2"



First Floor

Bedroom 1	3581 x 3904 mm	11'9" x 12'9"
En Suite	2162 x 1799 mm	7'1" x 5'10"
Bedroom 2	3119 x 3885 mm	10'2" x 12'9"
Bedroom 3	3328 x 3263 mm	10'11" x 10'8"
Bedroom 4	3112 x 3353 mm	10'2" x 11'0"
Bath	2124 x 1700 mm	6'11" x 5'7"

Floor plans are intended to give a general indication of the proposed floor layout only. Dimensions are accurate to within + or - 50mm but should not be used for carpet or flooring sizes, appliance spaces or items of furniture. Please ask our Sales Adviser for details of the treatments specified for individual plots. Individual features such as windows, brick and other materials' colours may vary, as may drainage, heating and electrical layouts. Images, photographs and dimensions are not intended to form part of any contract or warranty unless specifically incorporated in writing into the contract.

H417---B5 DS00/SP266399/0315

dwh.co.uk



DAVID WILSON HOMES
WHERE QUALITY LIVES

THE HERTFORD

FOUR BEDROOM DETACHED HOME



Individual plots may vary, please speak to the Sales Adviser



Designed over three floors, The Hertford is a spacious family home. A large open-plan dining area and kitchen – with separate utility – and a beautiful glazed walk-in bay with French doors leading to the garden, provide an abundance of flexible living space. Attractive bay windows in the dining area and the dual-

aspect lounge ensure this home offers a bright welcome. Two double bedrooms, the spacious master with en suite and dressing area, and the family bathroom are on the first floor. Upstairs are a further double bedroom, a single bedroom and a shower room.



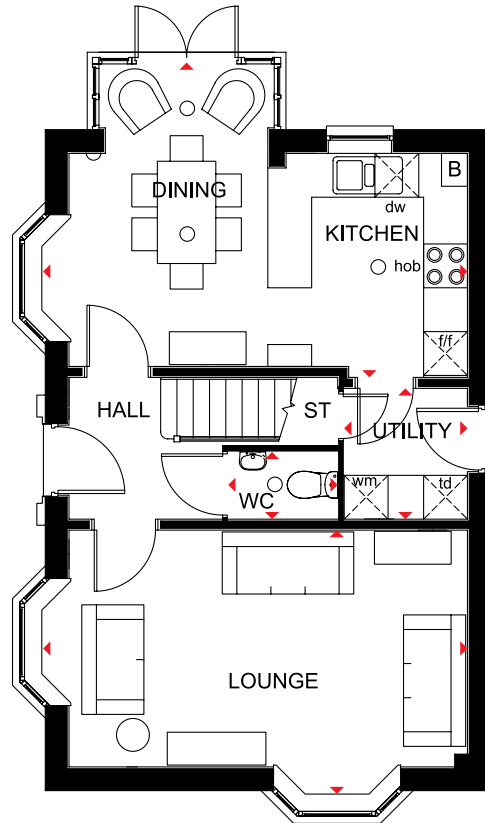
DAVID WILSON HOMES
WHERE QUALITY LIVES

THE HERTFORD

FOUR BEDROOM DETACHED HOME

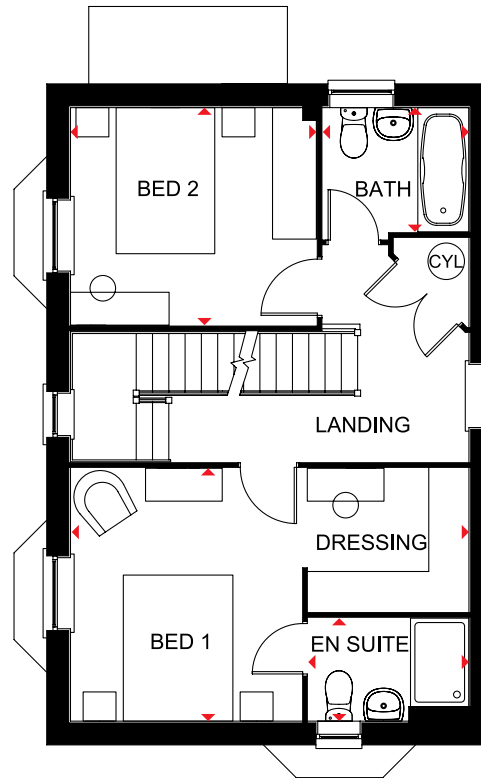
Key

B	Boiler	f/f	Fridge/freezer space	td	Tumble dryer space
CYL	Cylinder	wm	Washing machine space	◀▶	Dimension location
ST	Store	dw	Dishwasher space		



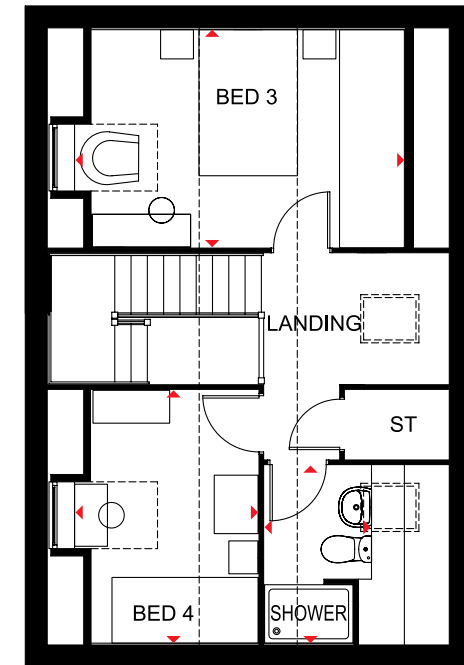
Ground Floor

Lounge	5852 x 3639 mm	19'2" x 11'11"
Kitchen/Dining	5852 x 4292 mm	19'2" x 14'1"
Utility	1791 x 1687 mm	5'11" x 5'6"
WC	1500 x 920 mm	4'11" x 3'0"



First Floor

Bed 1/Dressing	5455 x 3462 mm	17'11" x 11'4"
En suite	2200 x 1410 mm	7'3" x 4'8"
Bed 2	3366 x 2978 mm	11'1" x 9'9"
Bath	2000 x 1800 mm	6'7" x 5'11"



Second Floor

Bed 3	4540* x 2978 mm	14'10"* x 9'9"
Bed 4	3462 x 2537* mm	11'4" x 8'3"*
Shower room	2432 x 1464* mm	8'0" x 4'10"*

*Overall floor dimension includes lowered ceiling areas

All images used are for illustrative purposes only. Floor plans are intended to give a general indication of the proposed floor layout only. The dimensions are accurate to within + or - 50mm but should not be used for carpet or flooring sizes, appliance spaces or items of furniture. Please ask our Sales Adviser for details of the treatments specified for individual plots. Individual features such as windows, brick and other materials' colours may vary, as may drainage, heating and electrical layouts. All images, photographs and dimensions are not intended to form part of any contract or warranty unless specifically incorporated in writing into the contract. H470---5 DS09 / SP 344166



THE HADLEY

THREE BEDROOM DETACHED HOME



Individual plots may vary, please speak to the Sales Adviser



The sash-style windows give this detached home a delightfully traditional look. Yet inside, the open-plan kitchen – with its dining and family areas and separate utility room – is designed very much for busy, modern living. French doors to the garden

give the whole room a bright and airy feeling. The spacious dual-aspect lounge meanwhile provides the perfect place to relax. Upstairs are two double bedrooms, the large master with en suite, a single bedroom and a family bathroom.



DAVID WILSON HOMES

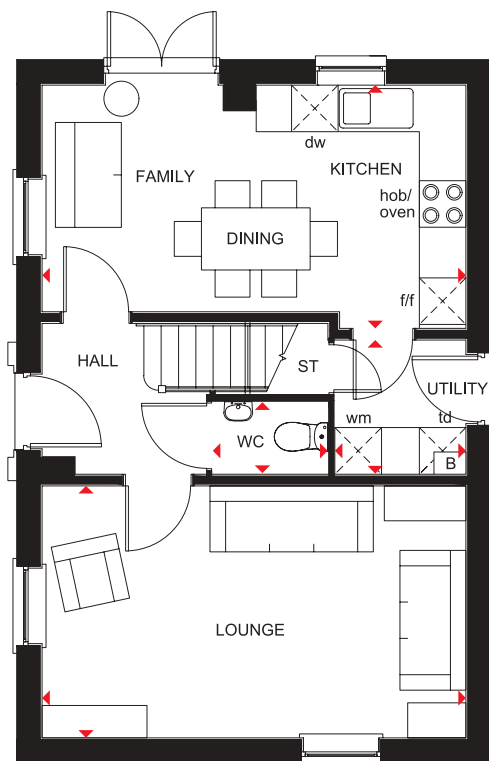
WHERE QUALITY LIVES

THE HADLEY

THREE BEDROOM DETACHED HOME

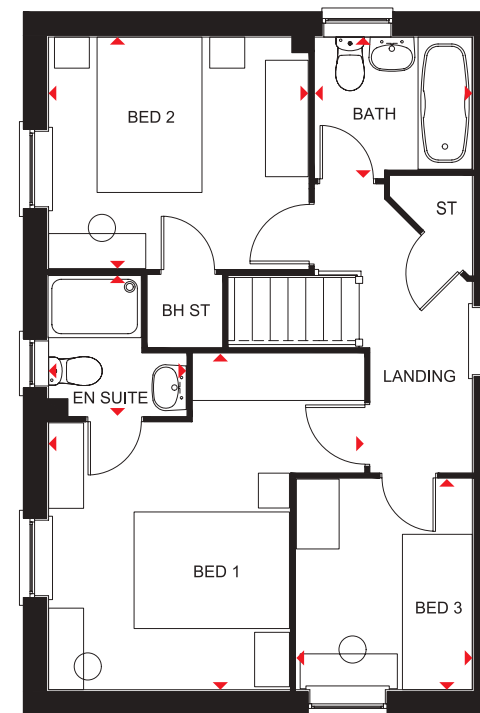
Key

B	Boiler	f/f	Fridge/freezer space	td	Tumble dryer space
ST	Store	wm	Washing machine space	◀▶	Dimension location
BH ST	Bulkhead Store	dw	Dishwasher space		



Ground Floor

Lounge	5455 x 3242 mm	17'11" x 10'8"
Kitchen/Family/ Dining	5455 x 3131 mm	17'11" x 10'3"
Utility	1727 x 1688 mm	5'8" x 5'6"
WC	1484 x 932 mm	4'10" x 3'1"



First Floor

Bedroom 1	4324 x 4058 mm	14'2" x 13'3"
En Suite	1806 x 1771 mm	5'11" x 5'9"
Bedroom 2	3341 x 2978 mm	11'3" x 9'9"
Bedroom 3	2713 x 2265 mm	8'11" x 7'5"
Bathroom	2025 x 1811 mm	6'8" x 6'0"

We are on the New Homes Quality Code register of registered developers. "We" refers to the Barratt Developments PLC group brands including Barratt London, Barratt Homes and David Wilson Homes. All images used are for illustrative purposes. These and the dimensions given are illustrative for this house type and individual properties may differ. Please check with your Sales Adviser in respect of individual properties. We give maximum dimensions within each room which includes areas of fixtures and fittings including fitted furniture. These dimensions should not be used for carpet or flooring sizes, appliance spaces or items of furniture. All images, photographs and dimensions are not intended to be relied upon for, nor to form part of, any contract unless specifically incorporated in writing into the contract.

P341--D7 DS02/SP394974

dwh.co.uk



DAVID WILSON HOMES
WHERE QUALITY LIVES

THE ARCHFORD

THREE BEDROOM HOME



Individual plots may vary, please speak to the Sales Adviser



The sash-style windows give the Archford end-terraced home a traditional look. Inside however, the stylish open-plan kitchen and dining area is designed very much for modern living with French doors opening out onto the rear garden and creating a bright, light-filled room. A lobby, separating the kitchen and the lounge,

has stairs leading to the first floor. Here, the master bedroom has its own en suite, with a separate bathroom for the rest of the family. A further double bedroom and a single bedroom complete this attractive home.



DAVID WILSON HOMES

WHERE QUALITY LIVES

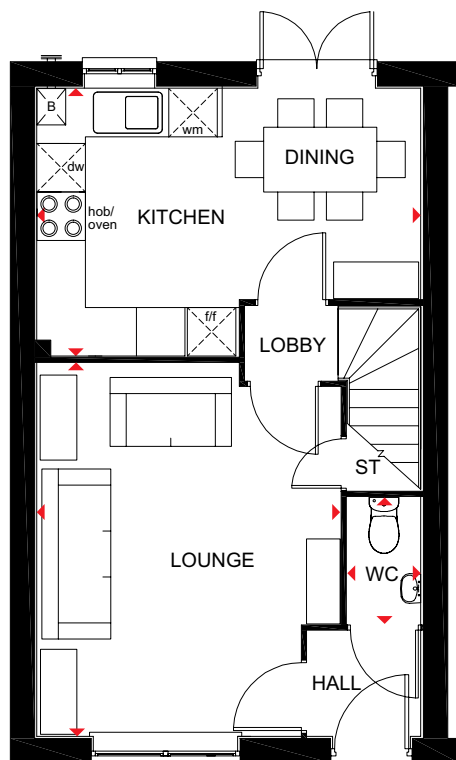
THE ARCHFORD

THREE BEDROOM HOME

Key

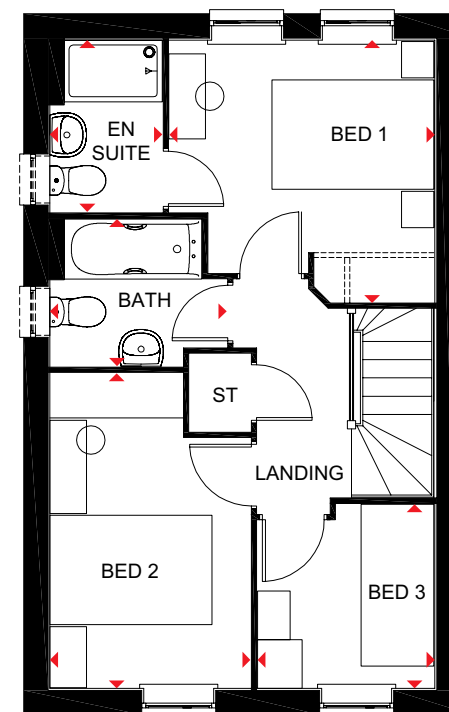
ST Store
B Boiler
f/f Fridge/freezer space

wm Washing machine space
dw Dishwasher space
◀▶ Dimension location



Ground Floor

Lounge	4604 x 3746 mm	15'1" x 12'3"
Kitchen/Dining	4750 x 3310 mm	15'7" x 10'10"
WC	1561 x 915 mm	5'1" x 3'0"



First Floor

Bed 1	3234 x 3276 mm	10'7" x 10'9"
En suite	1385 x 2119 mm	4'7" x 6'11"
Bed 2	2475 x 3891 mm	8'1" x 12'9"
Bed 3	2286 x 2186 mm	7'6" x 7'2"
Bath	1815 x 2181 mm	5'11" x 7'2"

We are on the New Homes Quality Code register of registered developers. "We" refers to the Barratt Developments PLC group brands including Barratt London, Barratt Homes and David Wilson Homes. All images used are for illustrative purposes. These and the dimensions given are illustrative for this house type and individual properties may differ. Please check with your Sales Adviser in respect of individual properties. We give maximum dimensions within each room which includes areas of fixtures and fittings including fitted furniture. These dimensions should not be used for carpet or flooring sizes, appliance spaces or items of furniture. All images, photographs and dimensions are not intended to be relied upon for, nor to form part of, any contract unless specifically incorporated in writing into the contract.

P382-E-7DS00/SP340070

dwh.co.uk



DAVID WILSON HOMES
WHERE QUALITY LIVES

THE KIRKDALE

FOUR BEDROOM DETACHED HOME



Individual plots may vary, please speak to the Sales Adviser



Sash-style windows give The Kirkdale a delightfully traditional look, while inside it is designed very much for modern family life. The hub of the house will surely be the expansive open-plan kitchen, which has dining and family areas with French doors

to the garden and a separate utility room. The lounge has an attractive front-aspect bay window, making it a pleasant place to relax. Upstairs, four double bedrooms – the main with en suite – and a family bathroom provide comfort for all the family.



DAVID WILSON HOMES

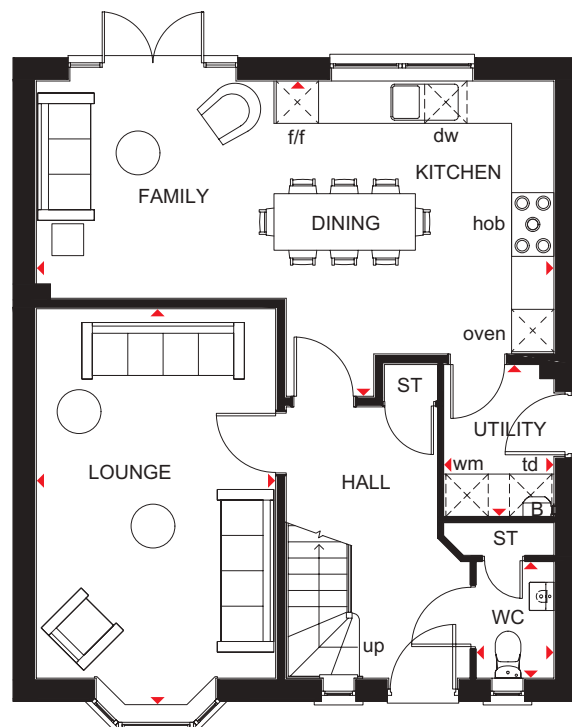
WHERE QUALITY LIVES

THE KIRKDALE

FOUR BEDROOM DETACHED HOME

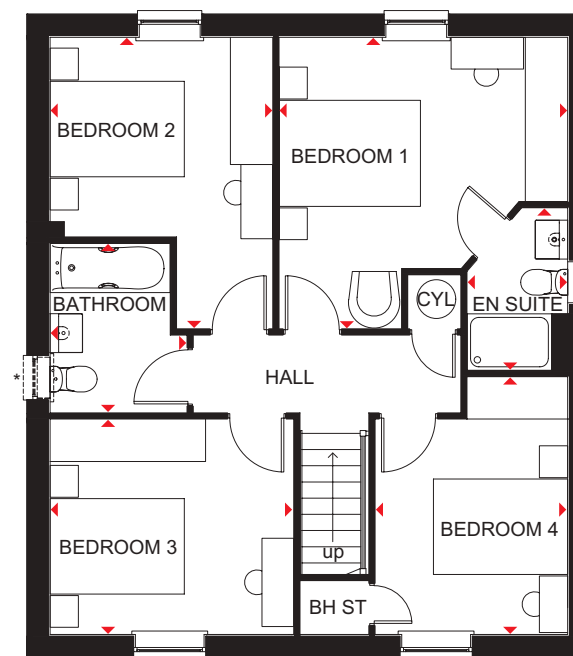
Key

B	Boiler	BH ST	Bulkhead store	f/f	Fridge/freezer space	dw	Dishwasher space	◀▶	Dimension location
ST	Store	CYL	Cylinder	wm	Washing machine space	td	Tumble dryer space		



Ground Floor

Lounge	3385 x 5622 mm	11'1" x 18'5"
Kitchen/Family/ Dining	7323 x 4460 mm	24'0" x 14'8"
Utility	1561 x 2150 mm	5'1" x 7'1"
WC	1100 x 1650 mm	3'7" x 5'5"



First Floor

Bedroom 1	4085 x 4124 mm	13'5" x 13'6"
En suite	1425 x 2300 mm	4'8" x 7'7"
Bedroom 2	3150 x 4124 mm	10'4" x 13'6"
Bedroom 3	3447 x 3048 mm	11'4" x 10'0"
Bedroom 4	2725 x 3648 mm	8'11" x 12'0"
Bathroom	1938 x 2400 mm	6'4" x 7'10"

*Window may be omitted on certain plots. Speak to a Sales Adviser for details on individual plots.

We are on the New Homes Quality Code register of registered developers. "We" refers to the Barratt Developments PLC group brands including Barratt London, Barratt Homes and David Wilson Homes. All images used are for illustrative purposes. These and the dimensions given are illustrative for this house type and individual properties may differ. Please check with your Sales Adviser in respect of individual properties. We give maximum dimensions within each room which includes areas of fixtures and fittings including fitted furniture. These dimensions should not be used for carpet or flooring sizes, appliance spaces or items of furniture. All images, photographs and dimensions are not intended to be relied upon for, nor to form part of, any contract unless specifically incorporated in writing into the contract.

DWH 2017 H442-H7 DS00/SP422651

dwh.co.uk



DAVID WILSON HOMES

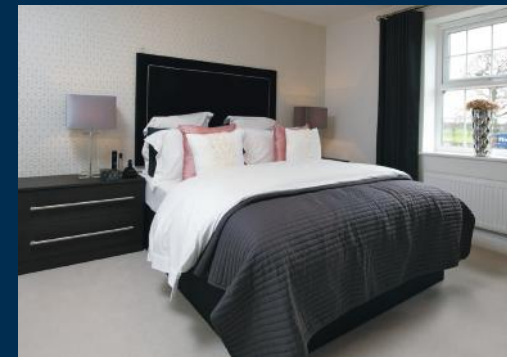
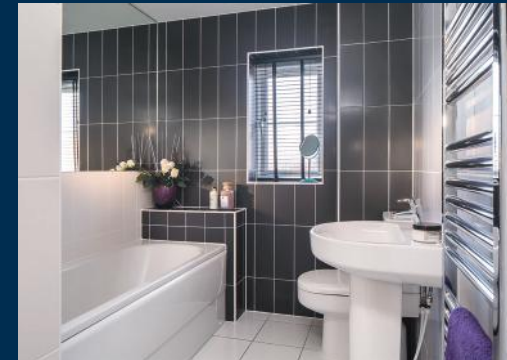
WHERE QUALITY LIVES

THE INGLEBY

FOUR BEDROOM DETACHED HOME



Individual plots may vary, please speak to the Sales Adviser



The sash-style windows of this family home give it a delightfully traditional feel, while inside, the large open-plan kitchen with its dining and family areas is designed very much for modern living. Essential utility space is discreetly tucked away in a corner of the

kitchen and French doors give access to the rear garden. The separate lounge provides a comfortable haven where everyone can relax. Upstairs are two double bedrooms, the master with en suite, two single bedrooms and a family bathroom.



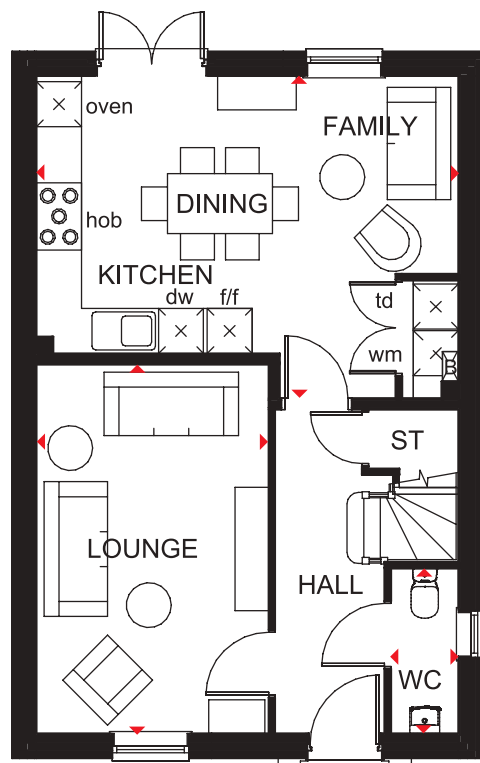
DAVID WILSON HOMES
WHERE QUALITY LIVES

THE INGLEBY

FOUR BEDROOM DETACHED HOME

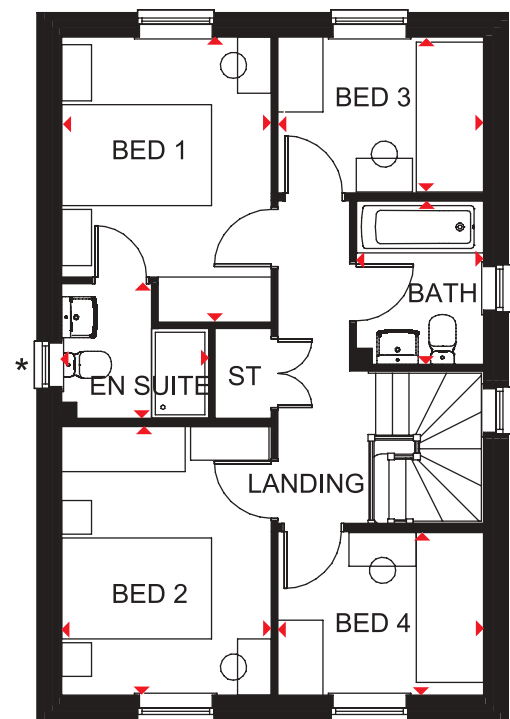
Key

B	Boiler	wm	Washing machine space	◀▶	Dimension location
ST	Store	dw	Dishwasher space		
f/f	Fridge/freezer space	td	Tumble dryer space		



Ground Floor

Lounge	4930 x 3100 mm	16'2" x 10'2"
Kitchen/Family/Dining	5635 x 4305 mm	18'6" x 14'1"
WC	2206 x 900 mm	7'3" x 2'11"



First Floor

Bedroom 1	3802 x 2800 mm	12'6" x 9'2"
En suite	1962 x 1800 mm	6'5" x 5'11"
Bedroom 2	3587 x 2800 mm	11'9" x 9'2"
Bedroom 3	2747 x 2066 mm	9'0" x 6'9"
Bedroom 4	2747 x 2172 mm	9'0" x 7'1"
Bathroom	2179 x 1700 mm	7'2" x 5'7"

*Window may be omitted on certain plots. Speak to a Sales Adviser for details on individual plots.

We are on the New Homes Quality Code register of registered developers. "We" refers to the Barratt Developments PLC group brands including Barratt London, Barratt Homes and David Wilson Homes. All images used are for illustrative purposes. These and the dimensions given are illustrative for this house type and individual properties may differ. Please check with your Sales Adviser in respect of individual properties. We give maximum dimensions within each room which includes areas of fixtures and fittings including fitted furniture. These dimensions should not be used for carpet or flooring sizes, appliance spaces or items of furniture. All images, photographs and dimensions are not intended to be relied upon for, nor to form part of, any contract unless specifically incorporated in writing into the contract.

DWH 2017 H403--C7DS00/SP389013

dwh.co.uk



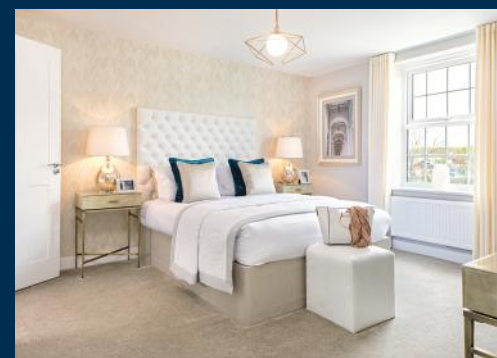
DAVID WILSON HOMES
WHERE QUALITY LIVES

THE HOLDEN

FOUR BEDROOM DETACHED HOME



Individual plots may vary, please speak to the Sales Adviser



Sash-style windows give The Holden a charming, traditional look, yet inside it is designed very much for modern family living. A beautiful glazed bay leading to the garden makes the open-plan kitchen, family and dining areas exceptionally bright and

airy. A separate utility room also has access to the garden, while a large bay-fronted lounge and a separate study provide room to relax and work. Upstairs are four double bedrooms, the master with en suite, and a family bathroom with shower.



DAVID WILSON HOMES

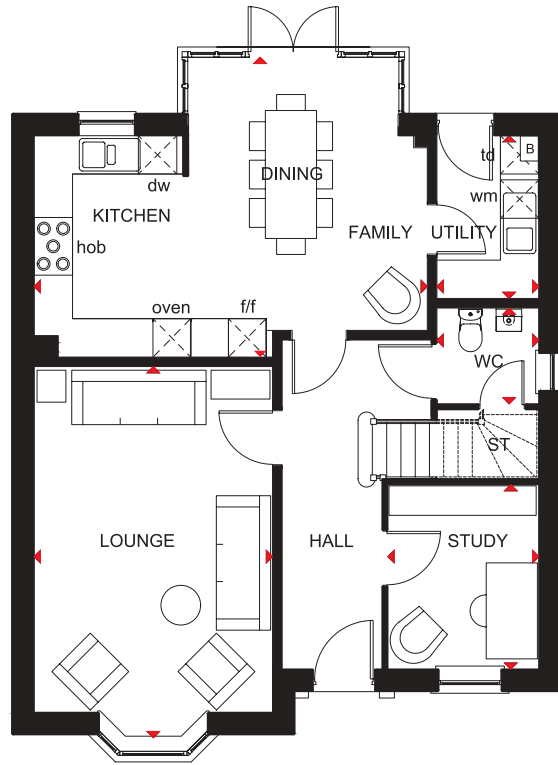
WHERE QUALITY LIVES

THE HOLDEN

FOUR BEDROOM DETACHED HOME

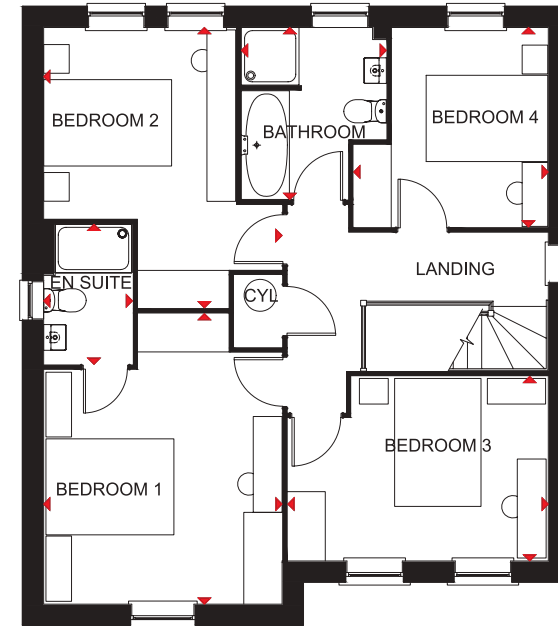
Key

B	Boiler	f/f	Fridge/freezer space	td	Tumble dryer space
ST	Store	wm	Washing machine space	◀▶	Dimension location
CYL	Cylinder	dw	Dishwasher space		



Ground Floor

Lounge	5802 x 3728 mm	19'0" x 12'3"
Kitchen/Family/Dining	6147 x 4685 mm	20'2" x 15'4"
Study	2886 x 2361 mm	9'6" x 7'9"
Utility	2545 x 1593 mm	8'4" x 5'3"
WC	1498 x 1593 mm	4'11" x 5'3"



First Floor

Bedroom 1	4543 x 3728 mm	14'11" x 12'3"
En suite	2190 x 1390 mm	7'2" x 4'7"
Bedroom 2	4384 x 3728 mm	14'4" x 12'3"
Bedroom 3	4073 x 2886 mm	13'4" x 9'5"
Bedroom 4	3120 x 3043 mm	10'3" x 10'0"
Bathroom	2689 x 2266 mm	8'10" x 7'5"

We are on the New Homes Quality Code register of registered developers. "We" refers to the Barratt Developments PLC group brands including Barratt London, Barratt Homes and David Wilson Homes. All images used are for illustrative purposes. These and the dimensions given are illustrative for this house type and individual properties may differ. Please check with your Sales Adviser in respect of individual properties. We give maximum dimensions within each room which includes areas of fixtures and fittings including fitted furniture. These dimensions should not be used for carpet or flooring sizes, appliance spaces or items of furniture. All images, photographs and dimensions are not intended to be relied upon for, nor to form part of, any contract unless specifically incorporated in writing into the contract.

H469-H7 DS03/SP416921

dwh.co.uk



DAVID WILSON HOMES
WHERE QUALITY LIVES