
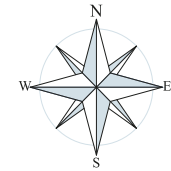




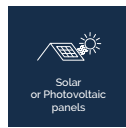
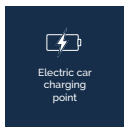
-  **The Wilford**
2 bedroom home
-  **The Burleigh**
2 bedroom bungalow
-  **The Belton**
2 bedroom bungalow
-  **The Ashdown**
2 bedroom home
-  **The Archford**
3 bedroom home
-  **The Eckington**
3 bedroom home
-  **The Hadley**
3 bedroom home
-  **The Fairway**
3 bedroom home
-  **The Abbeydale**
3 bedroom home
-  **The Hollinwood**
4 bedroom home
-  **The Shenton**
4 bedroom home
-  **The Millford**
4 bedroom home
-  **The Avondale**
4 bedroom home
-  **The Holden**
4 bedroom home

-  **Affordable Housing - Social Rented**
-  **Affordable Housing - Shared ownership**
-  **Sales Office & Show Home**
-  **Bike Store**

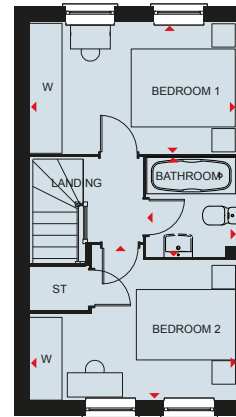
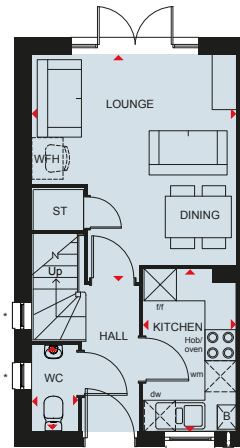


THE WILFORD

TWO BEDROOM HOME



Features are plot specific. Please refer to working drawing.



Ground Floor

Kitchen	3083 x 1780 mm	10'1" x 5'10"
Lounge/Dining	4362 x 3923 mm	14'3" x 12'10"
WC	1485 x 850 mm	5'1" x 2'9"

First Floor

Bedroom 1	3923 x 2487 mm	12'10" x 8'2"
Bedroom 2	3923 x 2931 mm	12'10" x 9'7"
Bathroom	1897 x 1695 mm	6'3" x 5'7"

* Window may be omitted on certain plots.
Speak to a Sales Adviser for details on individual plans.

Key

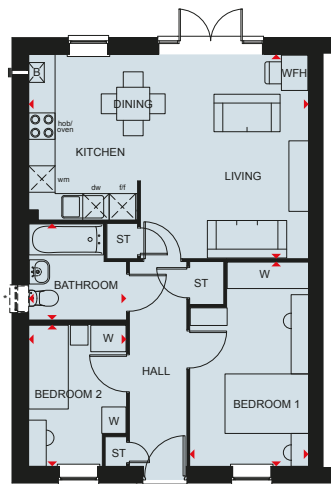
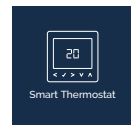
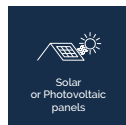
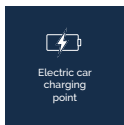
B	Boiler	wm	Washing machine space	f/f	Fridge freezer space	WFH	Working from home space
ST	Store	dw	Dishwasher space	W	Wardrobe space	↔	Dimension location



DAVID WILSON HOMES

THE BURLEIGH

TWO BEDROOM HOME



Ground Floor

Kitchen/Living/Dining	6355 x 4625 mm	20'10" x 15'2"
Bedroom 1	2690 x 4635 mm	8'10" x 15'2"
Bedroom 2	2210 x 3202 mm	7'3" x 10'6"
Bathroom	2210 x 2161 mm	7'3" x 7'1"

* Window may be omitted on certain plots. Speak to a Sales Adviser for details on individual plots

Key

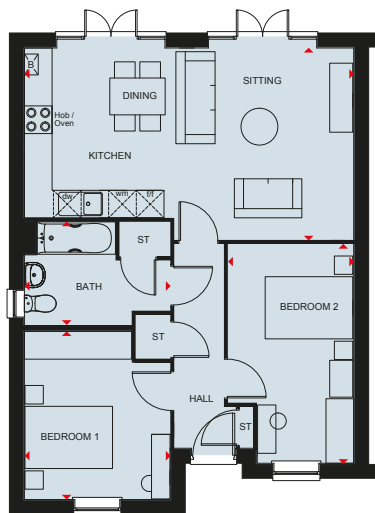
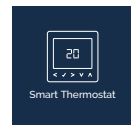
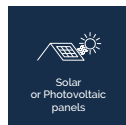
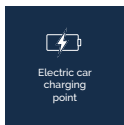
B Boiler	wm Washing machine space	f/f Fridge freezer space	W Wardrobe space	◀▶ Dimension location
ST Store	dw Dishwasher space	td Tumble dryer space	WFH Working from home space	



DAVID WILSON HOMES

THE BELTON

TWO BEDROOM HOME



Ground Floor

Sitting/ Kitchen/Dining	7145 x 4164 mm	23'5" x 13'8"
Bedroom 1	3651 x 3165 mm	11'11" x 10'4"
Bedroom 2	4762 x 2728 mm	15'7" x 8'11"
Bathroom	3165 x 2226 mm	10'4" x 7'3"

Key

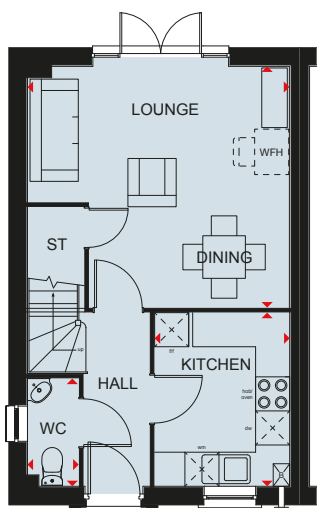
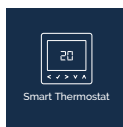
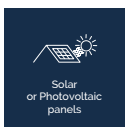
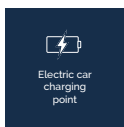
B	Boiler	f/f	Fridge/freezer space	dw	Dishwasher space
ST	Store	wm	Washing machine space	◀▶	Dimension location



DAVID WILSON HOMES

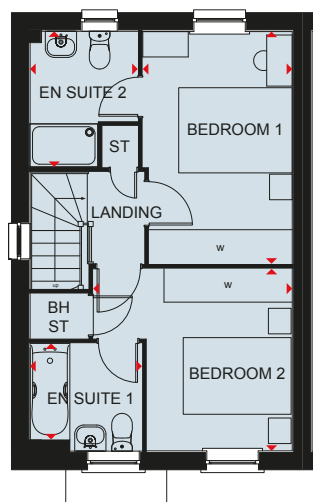
THE ASHDOWN

TWO BEDROOM HOME



Ground Floor

Kitchen	3057 x 2378 mm	10'0" x 7'10"
Lounge/Dining	4612 x 4248 mm	15'2" x 13'11"
WC	1897 x 902 mm	6'3" x 3'11"



First Floor

Bedroom 2	4089 x 2632 mm	13'5" x 8'7"
En suite 2	2391 x 1883 mm	7'10" x 6'0"
Bedroom 1	3504 x 3211 mm	11'6" x 10'6"
En suite 1	1969 x 1897 mm	6'6" x 6'3"

Key

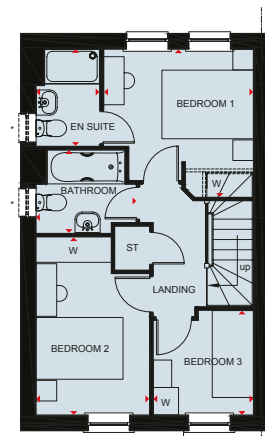
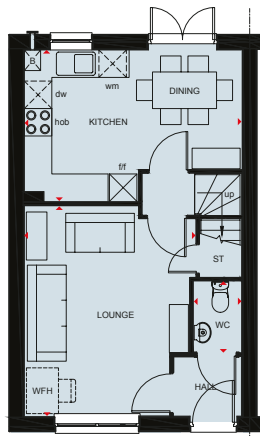
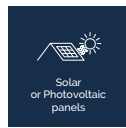
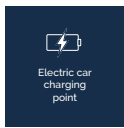
B	Boiler	BH	Bulkhead	wm	Washing machine space	f/f	Fridge freezer space	WFH	Working from home space	↕	Dimension location
ST	Store	BH/ST	Bulkhead Store	dw	Dishwasher space	td	Tumble dryer space	W	Wardrobe space		



DAVID WILSON HOMES

THE ARCHFORD

THREE BEDROOM TERRACED HOME



* optional window refer to sales advisor for individual plots

Ground Floor		
Lounge	4599 x 3746 mm	15'1" x 12'3"
Kitchen/Dining	4745 x 3310 mm	15'7" x 10'10"
WC	1561 x 1054 mm	5'1" x 3'5"

First Floor		
Bedroom 1	3277 x 3229 mm	10'9" x 10'7"
En suite	2119 x 1385 mm	6'11" x 4'7"
Bedroom 2	3887 x 2475 mm	12'9" x 8'1"
Bedroom 3	2281 x 2186 mm	7'6" x 7'2"
Bathroom	2181 x 1815 mm	7'2" x 5'11"

Key

B Boiler	wm Washing machine space	dw Dishwasher space	W Wardrobe space
ST Store	f/f Fridge/freezer space	WFH Working from home space	◀▶ Dimension location



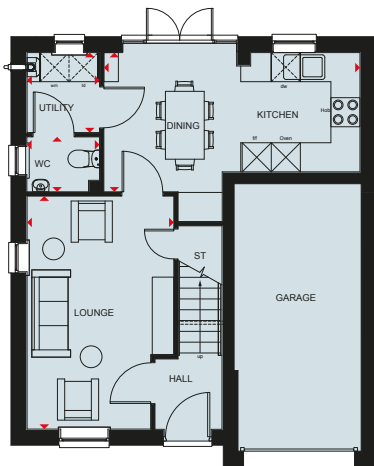
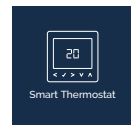
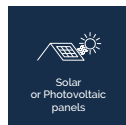
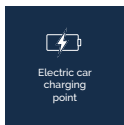
Scan here for more details



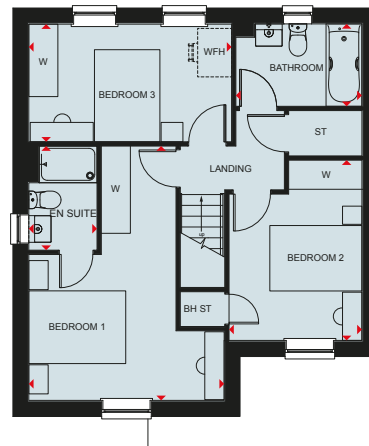
DAVID WILSON HOMES

ECKINGTON

THREE BEDROOM HOME



Ground Floor		
Lounge	4807 x 3028 mm	15'9" x 10'0"
Kitchen/Dining	5285 x 2873 mm	17'4" x 9'5"
WC	1495 x 1134 mm	4'10" x 3'9"
Utility	1651 x 1470 mm	5'5" x 4'10"



First Floor		
Bedroom 1	5247 x 4031 mm	17'3" x 13'3"
En Suite	2148 x 1408 mm	7'1" x 4'7"
Bedroom 2	3719 x 2742 mm	12'3" x 9'0"
Bedroom 3	4185 x 2428 mm	13'9" x 8'0"
Bathroom	2601 x 1701 mm	8'6" x 5'7"

Key

B Boiler	BH/ST Bulkhead Store	dw Dishwasher space	td Tumble dryer space	W Wardrobe space
ST Store	wm Washing machine space	f/f Fridge freezer space	WFH Working from home space	◀▶ Dimension location



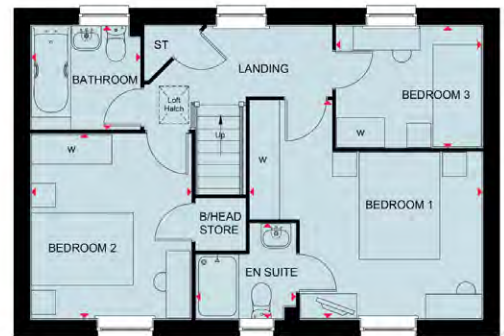
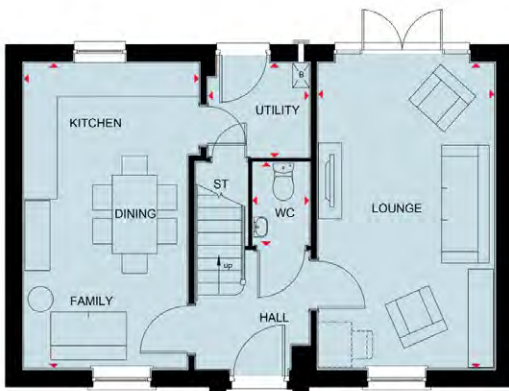
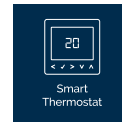
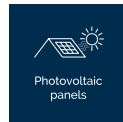
DAVID WILSON HOMES

HADLEY

THREE BEDROOM HOME



* Window may not be available on certain plots. Speak to Sales Adviser for details on individual plans.



Ground Floor

Lounge	5450 x 3148 mm	17'11" x 10'4"
Kitchen/Family/Dining	5450 x 3130mm	17'11" x 10'4"
Utility	1799 x 1688 mm	5'11" x 5'6"
WC	1480 x 1014 mm	4'10" x 3'4"

(Approximate dimensions)

First Floor

Bedroom 1	4324 x 4053 mm	14'2" x 13'3"
En Suite	1856 x 1771 mm	6'1" x 5'9"
Bedroom 2	3442 x 2978mm	11'3" x 9'9"
Bedroom 3	2713 x 2265 mm	8'11" x 7'5"
Bathroom	2025 x 1925mm	6'8" x 6'0"

(Approximate dimensions)

Key

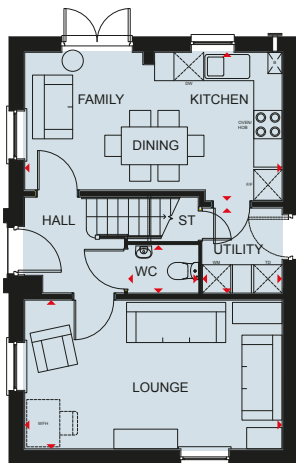
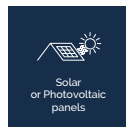
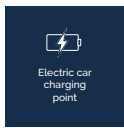
B	Boiler	wm	Washing machine space	f/f	Fridge/freezer space	w	Wardrobe space
ST	Store	dw	Dishwasher space	WFH	Working from home space	◀▶	Dimension location



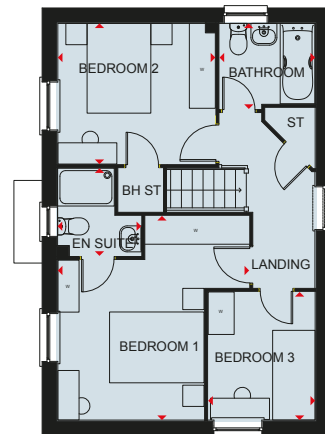
DAVID WILSON HOMES

HADLEY

THREE BEDROOM END OR DETACHED HOME



* Optional door please refer to sales adviser



* Optional window please refer to sales adviser

Ground Floor

Lounge	5450 x 3148 mm	17'11" x 10'4"
Kitchen/Family/Dining	5450 x 3143 mm	17'11" x 10'4"
Utility	1799 x 1688 mm	5'11" x 5'6"
WC	1480 x 1014 mm	4'10" x 3'4"

First Floor

Bedroom 1	4324 x 4053 mm	14'2" x 13'3"
En Suite	1856 x 1771 mm	6'1" x 5'9"
Bedroom 2	3336 x 2978 mm	11'3" x 9'9"
Bedroom 3	2713 x 2265 mm	8'11" x 7'5"
Bathroom	2025 x 1811 mm	6'8" x 6'0"

Key

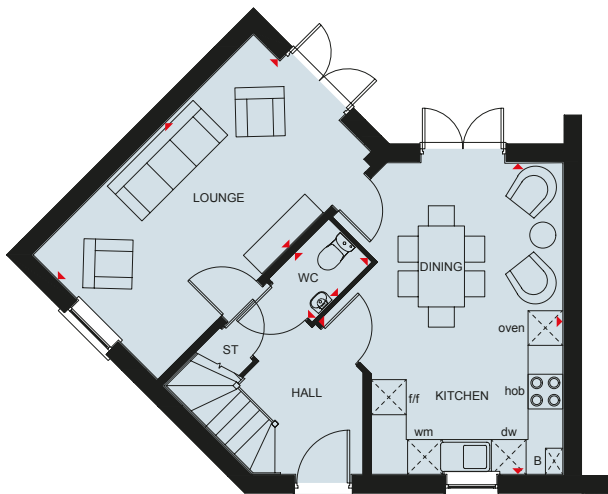
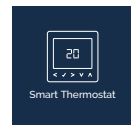
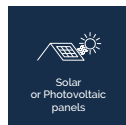
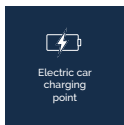
B Boiler	wm Washing machine space	dw Dishwasher space	W Wardrobe space	◀▶ Dimension location
ST Store	f/f Fridge/freezer space	TD Tumble dryer	WFH Working from home space	



DAVID WILSON HOMES

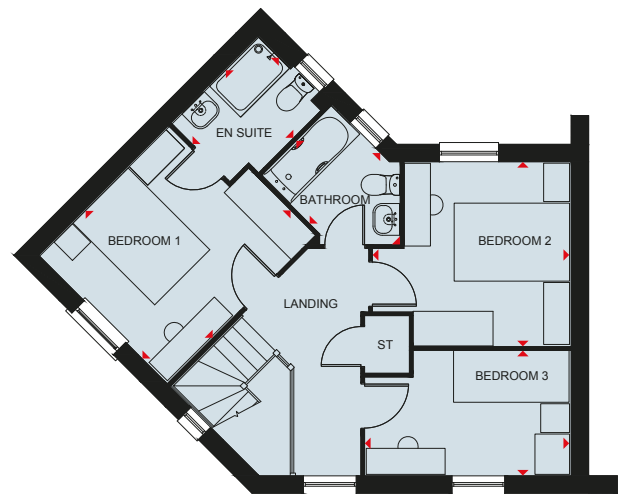
THE FAIRWAY

THREE BEDROOM END-TERRACED HOME



Ground Floor

Lounge	5390 x 3050 mm	17'8" x 10'0"
Kitchen/Dining	5390 x 4216 mm	17'8" x 13'10"
WC	1448 x 1025 mm	4'9" x 3'4"



First Floor

Bedroom 1	3601 x 3111 mm	11'10" x 10'2"
En Suite	2161 x 1650 mm	7'1" x 5'5"
Bedroom 2	3165 x 3406 mm	10'5" x 11'2"
Bedroom 3	3542 x 2136 mm	11'7" x 7'0"
Bathroom	2518 x 1700 mm	8'3" x 5'7"

Key

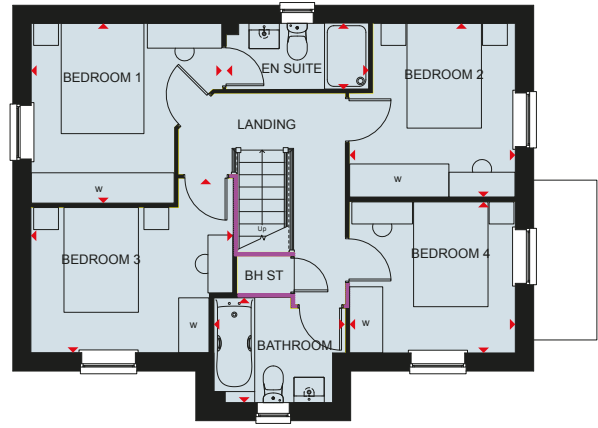
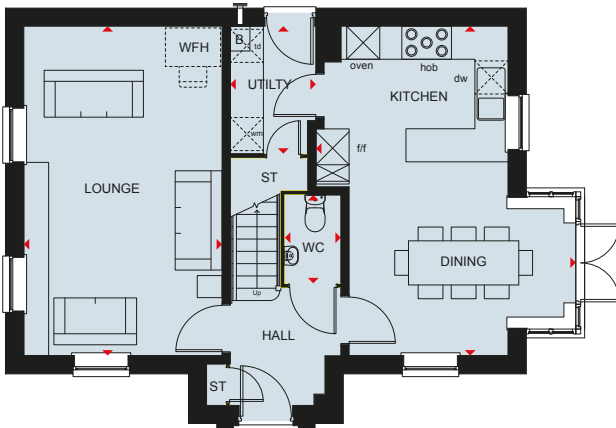
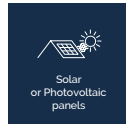
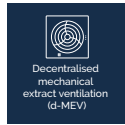
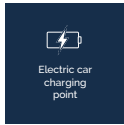
B	Boiler	wm	Washing machine space	dw	Dishwasher space
ST	Store	f/f	Fridge/freezer space	↔	Dimension location



DAVID WILSON HOMES

HOLLINWOOD

FOUR BEDROOM HOME



Ground Floor

Lounge	3595 x 5973 mm	11'10" x 19'7"
Kitchen/Dining	5973 x 4706 mm	19'7" x 15'5"
Utility	1550 x 2312 mm	5'1" x 7'7"
WC	1014 x 1600 mm	3'4" x 5'3"

First Floor

Bedroom 1	3457 x 3260 mm	11'4" x 10'8"
En suite	2574 x 1200 mm	8'5" x 4'0"
Bedroom 2	3005 x 3150 mm	9'10" x 10'4"
Bedroom 3	3661 x 3154 mm	12'0" x 10'4"
Bedroom 4	3005 x 2739 mm	9'10" x 9'0"
Bathroom	2373 x 1900 mm	7'9" x 6'3"

Key

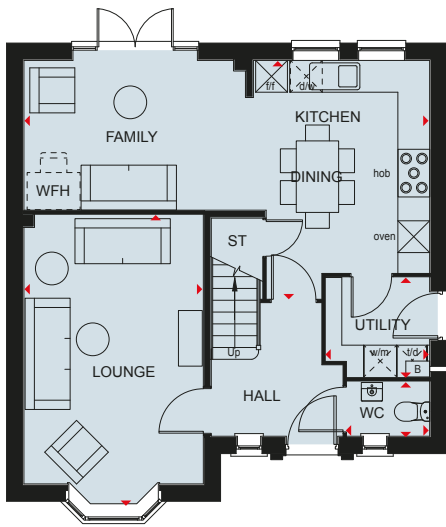
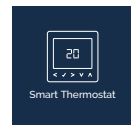
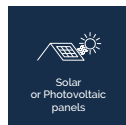
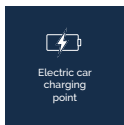
B Boiler	BH ST Bulkhead Store	dw Dishwasher space	td Tumble dryer place	W Wardrobe space
ST Store	wm Washing machine space	f/f Fridge freezer space	WFH Working from home space	◀▶ Dimension location



DAVID WILSON HOMES

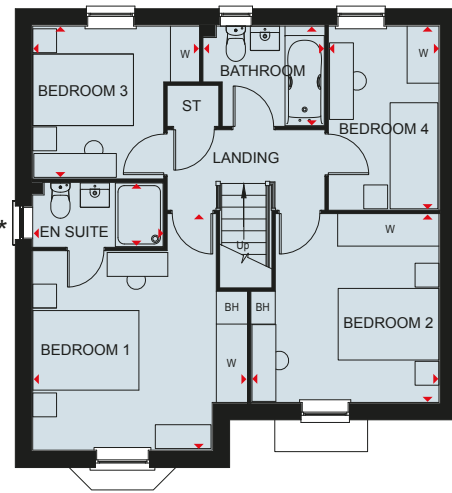
THE SHENTON

FOUR BEDROOM HOME



Ground Floor

Lounge	5473 x 3385 mm	17'11" x 11'1"
Kitchen/Dining/Family	7665 x 4499 mm	25'1" x 16'4"
Utility	1961 x 1878 mm	6'11" x 6'2"
W.C.	1561 x 1033 mm	5'1" x 3'5"



First Floor

Bedroom 1	4446 x 4040 mm	14'7" x 13'3"
Bedroom 2	3543 x 3536 mm	11'8" x 11'7"
Bedroom 3	3137 x 2864 mm	10'3" x 9'5"
Bedroom 4	3454 x 2076 mm	11'4" x 6'10"
En suite	2461 x 1200 mm	8'1" x 3'11"
Bathroom	2275 x 1880 mm	7'6" x 6'2"

* Overall floor dimension includes lowered ceiling areas

Key

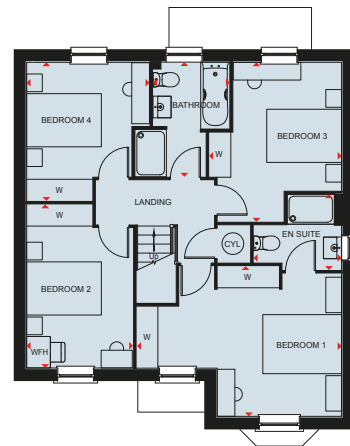
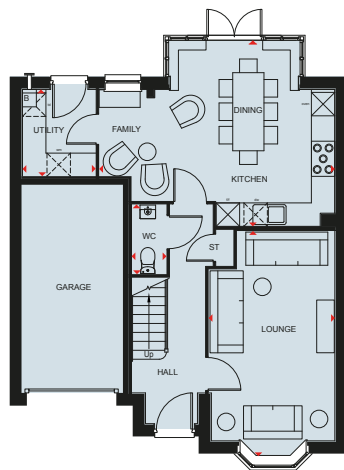
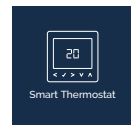
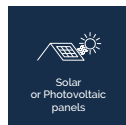
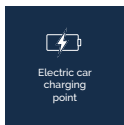
B Boiler	BH Bulkhead	dw Dishwasher space	td Tumble dryer space	W Wardrobe space
ST Store	wm Washing machine space	f/f Fridge freezer space	WFH Working from home space	◀▶ Dimension location



DAVID WILSON HOMES

MILLFORD

FOUR BEDROOM HOME



Ground Floor

Lounge	5767 x 3235 mm	18'11" x 10'7"
Kitchen/Family/Dining	6037 x 4735 mm	19'10" x 15'6"
Utility	2225 x 1877 mm	7'3" x 6'2"
WC	1786 x 895 mm	5'10" x 2'11"

First Floor

Bedroom 1	5195 x 3818 mm	17'0" x 12'6"
En Suite	2235 x 1924 mm	7'4" x 6'4"
Bedroom 2	4156 x 2707 mm	13'8" x 8'10"
Bedroom 3	4051 x 3365 mm	13'4" x 11'0"
Bedroom 4	3522 x 3124 mm	11'7" x 10'3"
Bathroom	2913 x 1950 mm	9'7" x 6'5"

Key

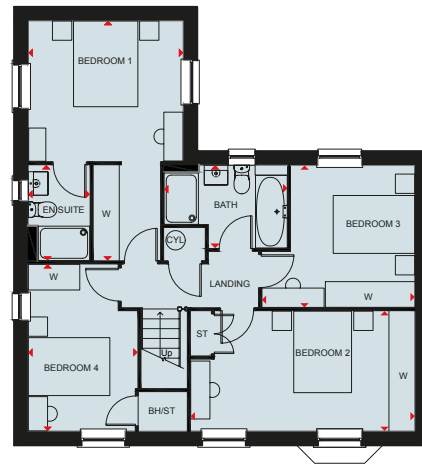
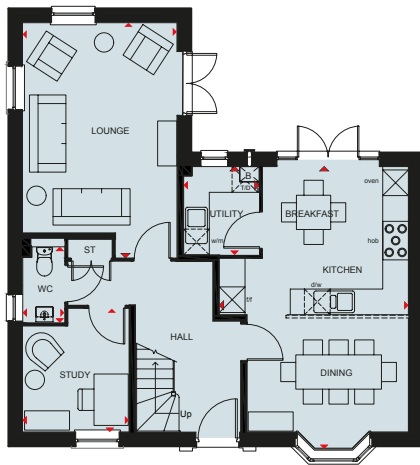
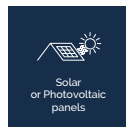
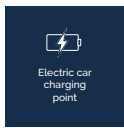
B Boiler	wm Washing machine space	f/f Fridge freezer space	WFH Working from home space	◀▶ Dimension location
ST Store	dw Dishwasher space	td Tumble dryer space	W Wardrobe space	



DAVID WILSON HOMES

THE AVONDALE

FOUR BEDROOM HOME



Ground Floor

Lounge	5488 x 3605 mm	18'0" x 11'10"
Kitchen/Breakfast/Dining	6590 x 4415 mm	21'7" x 14'6"
Utility	2060 x 1761 mm	6'9" x 5'9"
Study	2878 x 2488 mm	9'5" x 8'2"
WC	1768 x 975 mm	5'10" x 3'2"

First Floor

Bedroom 1	5585 x 3605 mm	18'3" x 11'10"
Ensuite	2222 x 1433 mm	7'3" x 4'8"
Bedroom 2	5225 x 2792 mm	17'1" x 9'2"
Bedroom 3	3563 x 3308 mm	11'8" x 10'10"
Bedroom 4	3853 x 2547 mm	12'7" x 8'4"
Bathroom	2871 x 1927 mm	9'5" x 6'4"

Key

B Boiler	f/f Fridge/freezer space	wm Washing machine space	W Wardrobe space
ST Store	dw Dishwasher space	td Tumble dryer space	◀▶ Dimension location



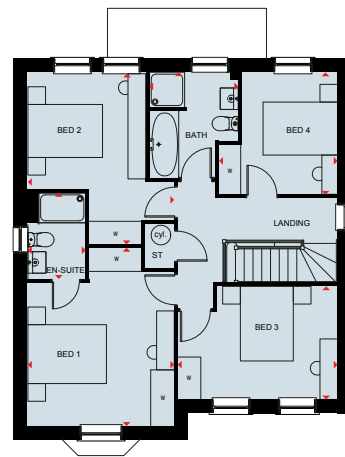
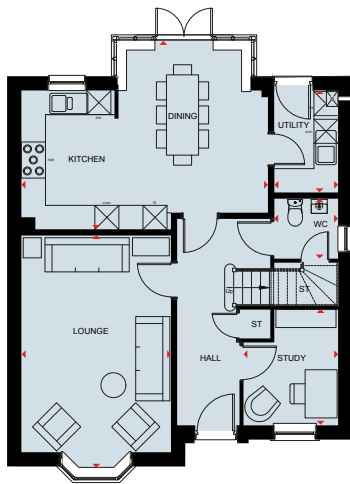
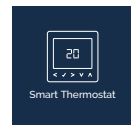
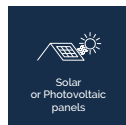
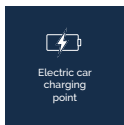
Scan here for more details



DAVID WILSON HOMES

HOLDEN

FOUR BEDROOM DETACHED HOME



Ground Floor

Lounge	5797 x 3723 mm	19'0" x 12'3"
Kitchen/Dining	6142 x 4685 mm	20'2" x 15'4"
Study	2881 x 2361 mm	9'6" x 7'9"
Utility	2545 x 1588 mm	8'4" x 5'3"
WC	1498 x 1588 mm	4'11" x 5'3"

First Floor

Bedroom 1	4538 x 3728 mm	14'11" x 12'3"
En Suite	2190 x 1471 mm	7'2" x 4'10"
Bedroom 2	4379 x 3728 mm	14'4" x 12'3"
Bedroom 3	4073 x 2881 mm	13'4" x 9'5"
Bedroom 4	3115 x 3043 mm	10'3" x 10'0"
Bathroom	2689 x 2266 mm	8'10" x 7'5"

Key

B Boiler	W Wardrobe space	wm Washing machine space	CYL Cylinder	◀▶ Dimension location
ST Store	f/f Fridge/freezer space	dw Dishwasher space	td Tumble dryer	



Scan here for more details



DAVID WILSON HOMES



— CREATING A SUSTAINABLE —

COMMUNITY

WHERE FAMILIES AND NATURE CAN THRIVE

At David Wilson Homes, we do more than simply craft beautiful homes and desirable developments.

We design and build great places that meet the highest standards, and that promote sustainable, healthy and happy living for our customers.

We know we must give our customers confidence that their homes are designed and built to meet the challenges of the future. We do this through creating places where people and nature can thrive.





DAVID WILSON HOMES

WHERE QUALITY LIVES

dwh.co.uk