

SP
SYDNEY
— P L A C E —

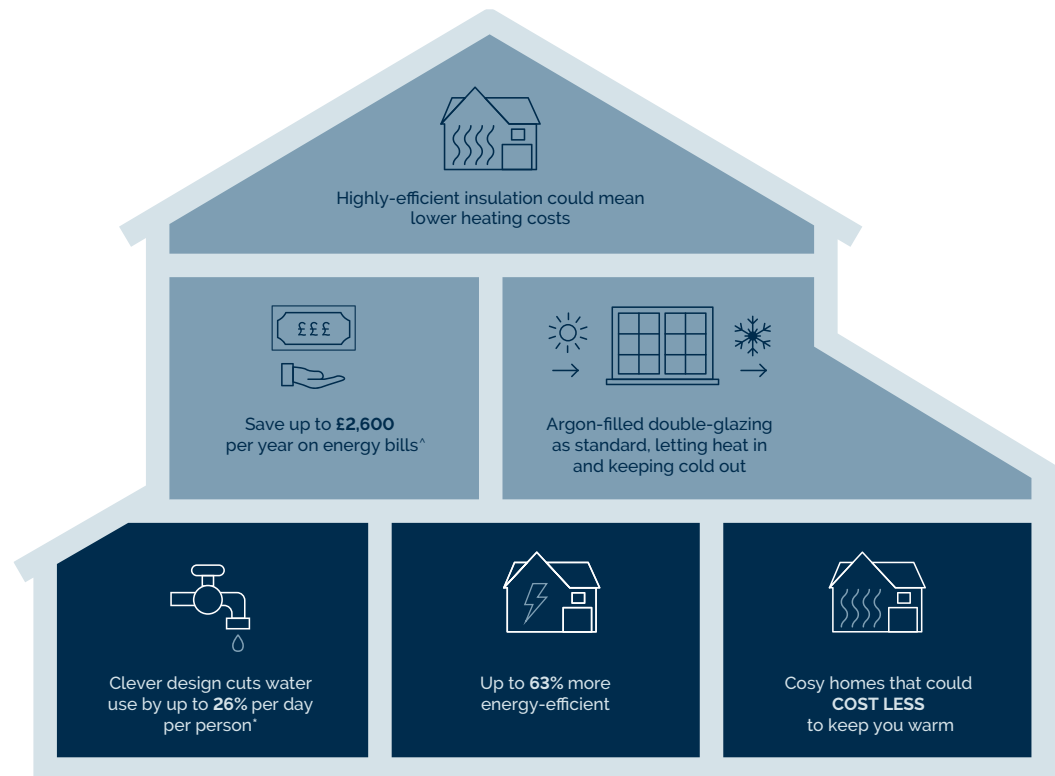
dwh.co.uk



DAVID WILSON HOMES
WHERE QUALITY LIVES

WE'RE HELPING TO MAKE YOUR HOME MORE ENERGY-EFFICIENT

We create low-carbon and efficient homes that are designed and built for better living and meet the challenges of the future.



[^]Indicative figures, based on HBF "Watt a Save" report published Feb 2023.

*Source: [Water UK](#)

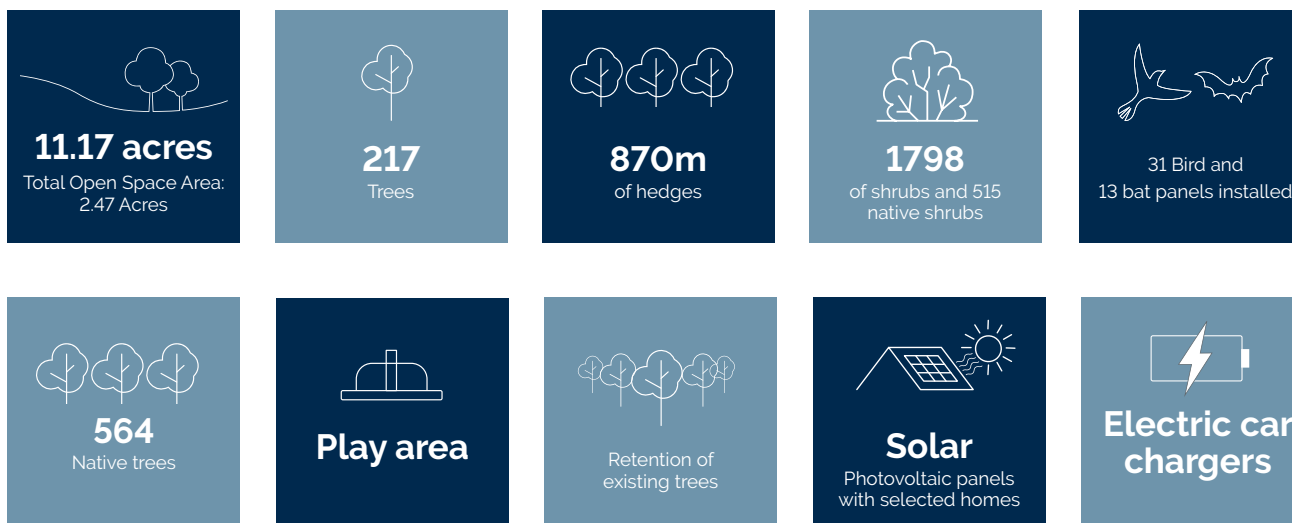
CREATING A SUSTAINABLE COMMUNITY

WHERE FAMILIES AND NATURE CAN THRIVE

At David Wilson Homes, we do more than simply craft beautiful homes and desirable developments.

We design and build great places that meet the highest standards and that promote sustainable healthy and happy living for our customers.

We know we must give our customers confidence that their homes are designed and built to meet the challenges of the future. We do this through creating places where people and nature can thrive.



SYDNEY PLACE

Sydney Road, Crewe, Cheshire CW1 5GP

KEY

 **The Archford**
3 bedroom home

 **The Hadley**
3 bedroom home

 **The Greenwood**
3 bedroom home

 **The Fairway**
3 bedroom home

 **The Winwick**
3 bedroom home

 **The Herford**
4 bedroom home

 **The Kirkdale**
4 bedroom home

 **The Millford**
4 bedroom home

 **The Holden**
4 bedroom home

 **The Avondale**
4 bedroom home

 **Affordable Homes**

 2021 Building Regulations

 Marketing Suite & Show Homes

Play Area



Hedges



Native Trees



Small Bird Nest Box



Bat Box



Swift Nesting Box
Sparrow Nesting Terrace



Electric Vehicle
Charging Points



Positioning of our sustainability features are subject to change. Speak to a Sales Adviser for more information.

THE MILLFORD

FOUR BEDROOM DETACHED HOME



Individual plots may vary, please speak to the Sales Adviser



This sought-after four bedroom home features a bright and airy interior. The hallway leads directly into a stylish kitchen boasting dining, family and utility room, and a glazed bay opening onto the rear garden. Downstairs also offers a bay

fronted lounge. Upstairs, the master bedroom enjoys an ensuite shower room, accompanying three further double bedrooms and a family bathroom with separate shower. This home also comes with an integral garage.



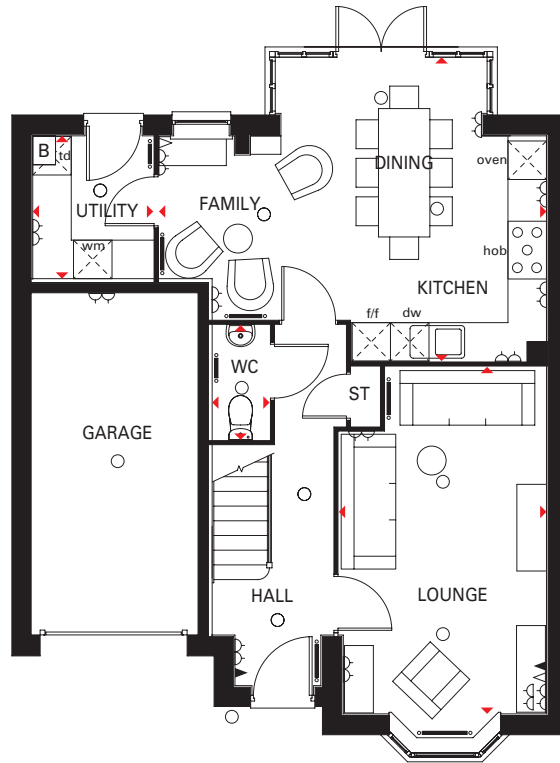
DAVID WILSON HOMES
WHERE QUALITY LIVES

THE MILLFORD

FOUR BEDROOM DETACHED HOME

Key

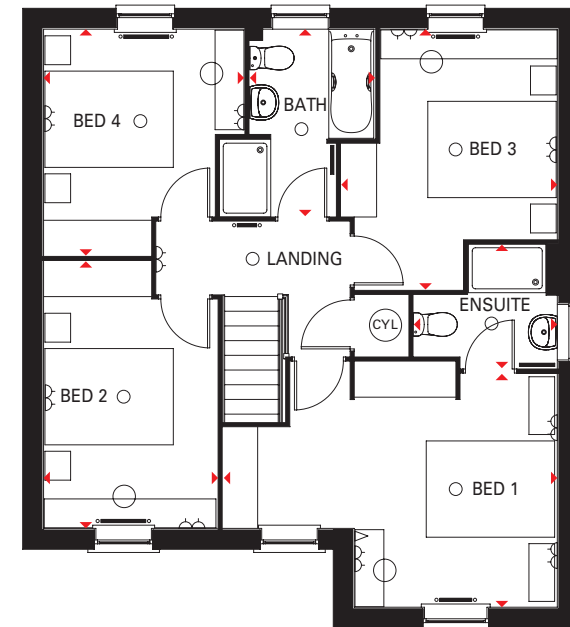
○ Light fitting	◀ Telephone outlet point	— Radiator	B Boiler	CYL Cylinder	wm Washing machine space	td Tumble dryer space
◊ Electric socket	◁ T.V. aerial socket	— Towel radiator	ST Store	f/f Fridge/freezer space	dw Dishwasher space	◄► Dimension location



Ground Floor

Lounge	5772 x 3235 mm	18'11" x 10'7"
Kitchen/Family/Dining	6037 x 4735 mm	19'10" x 15'6"
Utility	2225 x 1877 mm	7'3" x 6'2"
WC	1786 x 895 mm	5'10" x 2'11"

*Window may be omitted on certain plots. Speak to a Sales Adviser for details on individual plots.



First Floor

Bed 1	5195 x 3822 mm	17'0" x 12'6"
En suite	2235 x 1924 mm	7'4" x 6'4"
Bed 2	4161 x 2707 mm	13'8" x 8'10"
Bed 3	4056 x 3365 mm	13'4" x 11'0"
Bed 4	3527 x 3124 mm	11'7" x 10'3"
Bath	2913 x 1950 mm	9'7" x 6'5"

Computer generated images are for illustrative purposes only and individual features often vary from one plot to another. Floor plans are indicative only to give a general indication of the proposed development and floor layout. The dimensions are accurate to within + or -50mm. Dimensions should not be used for carpet sizes, appliance spaces or items of furniture. Please ask our Sales Advisers for details of the treatments specified for individual plots. Computer generated images are for general guidance only and are not intended to form part of any contract or warranty. Furniture shown is for illustrative purposes only. H411---H7 DS09

dwh.co.uk



DAVID WILSON HOMES
WHERE QUALITY LIVES

THE KIRKDALE

FOUR BEDROOM DETACHED HOME



Individual plots may vary, please speak to the Sales Adviser



Sash-style windows give The Kirkdale a delightfully traditional look, while inside it is designed very much for modern family life. The hub of the house will surely be the expansive open-plan kitchen, which has dining and family areas with French doors

to the garden and a separate utility room. The lounge has an attractive front-aspect bay window, making it a pleasant place to relax. Upstairs, four double bedrooms – the main with en suite – and a family bathroom provide comfort for all the family.



DAVID WILSON HOMES

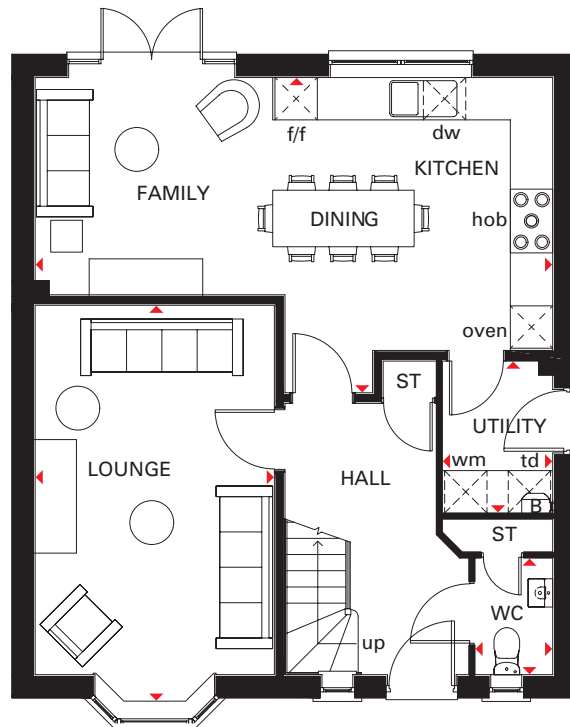
WHERE QUALITY LIVES

THE KIRKDALE

FOUR BEDROOM DETACHED HOME

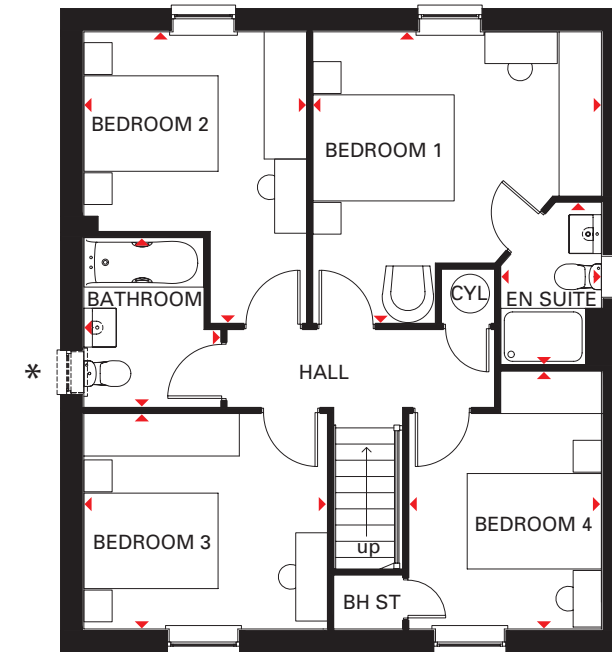
Key

B	Boiler	BH ST	Bulkhead store	f/f	Fridge/freezer space	dw	Dishwasher space	↔	Dimension location
ST	Store	CYL	Cylinder	wm	Washing machine space	td	Tumble dryer space		



Ground Floor

Lounge	3385 x 5622 mm	11'1" x 18'5"
Kitchen/Family/Dining	7323 x 4460 mm	24'0" x 14'8"
Utility	1561 x 2150 mm	5'1" x 7'1"
WC	1100 x 1650 mm	3'7" x 5'5"



First Floor

Bedroom 1	4085 x 4124 mm	13'5" x 13'6"
En suite	1425 x 2300 mm	4'8" x 7'7"
Bedroom 2	3150 x 4124 mm	10'4" x 13'6"
Bedroom 3	3447 x 3048 mm	11'4" x 10'0"
Bedroom 4	2725 x 3648 mm	8'11" x 12'0"
Bathroom	1938 x 2400 mm	6'4" x 7'10"

*Window may be omitted on certain plots. Speak to a Sales Adviser for details on individual plots.

All images used are for illustrative purposes. These and the dimensions given are illustrative for this house type and individual properties may differ. Please check with your Sales Adviser in respect of individual properties. We give maximum dimensions within each room which includes areas of fixtures and fittings including fitted furniture. These dimensions should not be used for carpet or flooring sizes, appliance spaces or items of furniture. All images, photographs and dimensions are not intended to be relied upon for, nor to form part of, any contract unless specifically incorporated in writing into the contract.

DWH 2017 H442 --H7 DS04/SP422651

dwh.co.uk



DAVID WILSON HOMES

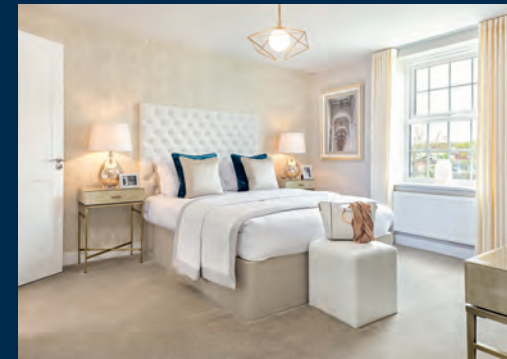
WHERE QUALITY LIVES

THE HOLDEN

FOUR BEDROOM DETACHED HOME



Individual plots may vary, please speak to the Sales Adviser



Sash-style windows give The Holden a charming, traditional look, yet inside it is designed very much for modern family living. A beautiful glazed bay leading to the garden makes the open-plan kitchen, family and dining areas exceptionally bright and

airy. A separate utility room also has access to the garden, while a large bay-fronted lounge and a separate study provide room to relax and work. Upstairs are four double bedrooms, the master with en suite, and a family bathroom with shower.



DAVID WILSON HOMES

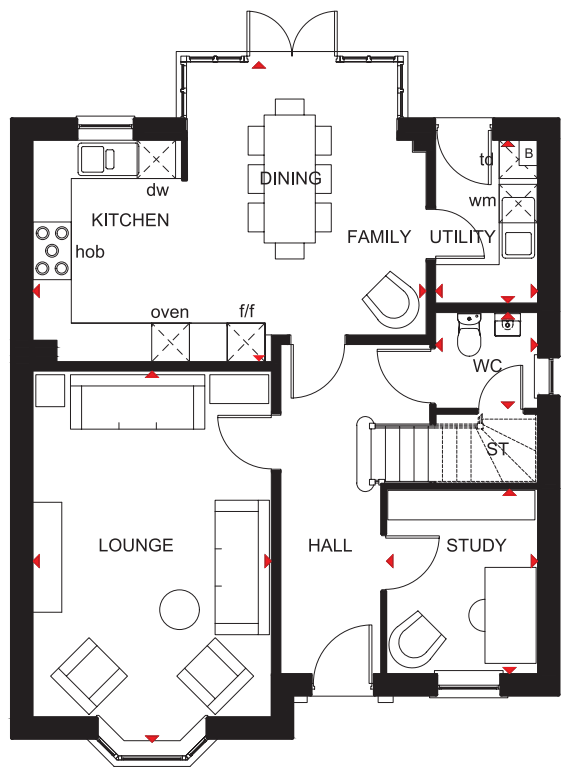
WHERE QUALITY LIVES

THE HOLDEN

FOUR BEDROOM DETACHED HOME

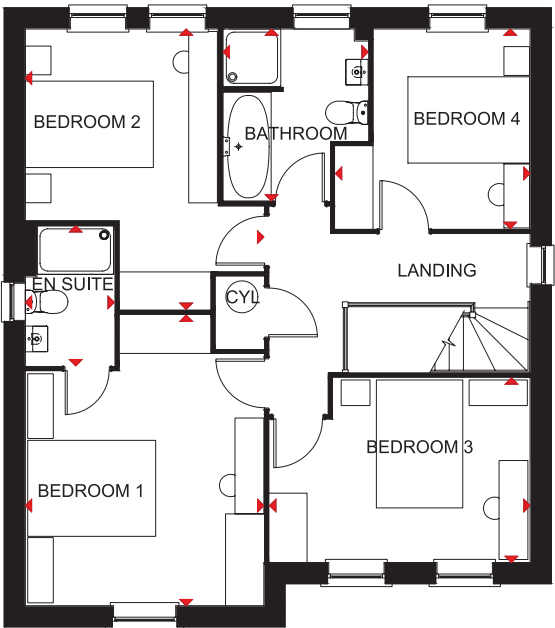
Key

B	Boiler	f/f	Fridge/freezer space	td	Tumble dryer space
ST	Store	wm	Washing machine space	◀▶	Dimension location
CYL	Cylinder	dw	Dishwasher space		



Ground Floor

Lounge	5802 x 3728 mm	19'0" x 12'3"
Kitchen/Family/Dining	6147 x 4685 mm	20'2" x 15'4"
Study	2886 x 2361 mm	9'6" x 7'9"
Utility	2545 x 1593 mm	8'4" x 5'3"
WC	1498 x 1593 mm	4'11" x 5'3"



First Floor

Bedroom 1	4543 x 3728 mm	14'11" x 12'3"
En suite	2190 x 1390 mm	7'2" x 4'7"
Bedroom 2	4384 x 3728 mm	14'4" x 12'3"
Bedroom 3	4073 x 2886 mm	13'4" x 9'5"
Bedroom 4	3120 x 3043 mm	10'3" x 10'0"
Bathroom	2689 x 2266 mm	8'10" x 7'5"

All images used are for illustrative purposes. These and the dimensions given are illustrative for this house type and individual properties may differ. Please check with your Sales Adviser in respect of individual properties. We give maximum dimensions within each room which includes areas of fixtures and fittings including fitted furniture. These dimensions should not be used for carpet or flooring sizes, appliance spaces or items of furniture. All images, photographs and dimensions are not intended to be relied upon for, nor to form part of, any contract unless specifically incorporated in writing into the contract. H469 –H7 DS07



THE HEATHER

THREE BEDROOM HOME



Individual plots may vary, please speak to the Sales Adviser



The Heather has modern living and functional fashion that ensures a warm welcome with a brightly lit entrance hall and lounge. The kitchen, with its open-plan layout leads out to the rear garden.

Upstairs you will be greeted by the spacious master bedroom, a further single and double bedroom alongside the family bathroom.

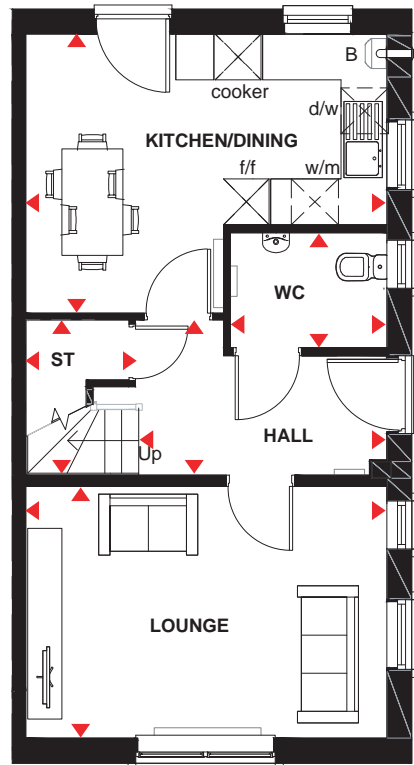


DAVID WILSON HOMES
WHERE QUALITY LIVES

THE HEATHER

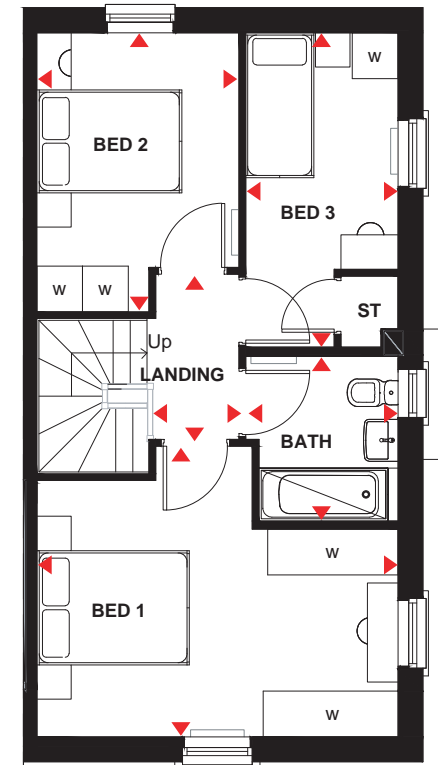
THREE BEDROOM HOME

ST	Store	w/m	Washing machine space
B	Boiler	dw	Dishwasher space
f/f	Fridge/freezer space	◀▶	Dimension location



Ground Floor

Lounge	4737 x 3300 mm	15' 5" x 10' 8"
Kitchen / Dining	4737 x 3660 mm	15' 5" x 12'
W.C.	2055 x 1508 mm	6' 7" x 4' 9"
Hall	3255 x 1564 mm	10' 6" x 5' 1"
Store	1335 x 790 mm	4' 3" x 2' 5"



First Floor

Bed 1	4737 x 3362 mm	15' 5" x 11'
Bed 2	2651 x 3077 mm	8' 6" x 10'
Bed 3	3102 x 2000 mm	10' 1" x 6' 5"
Bathroom	2156 x 1824 mm	7' x 5' 9"
Landing	2153 x 1204 mm	7' x 3' 9"

All images used are for illustrative purposes. These and the dimensions given are illustrative for this house type and individual properties may differ. Please check with your Sales Adviser in respect of individual properties. We give maximum dimensions within each room which includes areas of fixtures and fittings including fitted furniture. These dimensions should not be used for carpet or flooring sizes, appliance spaces or items of furniture. All images, photographs and dimensions are not intended to be relied upon for, nor to form part of, any contract unless specifically incorporated in writing into the contract.

dwh.co.uk



DAVID WILSON HOMES
WHERE QUALITY LIVES

THE HADLEY

THREE BEDROOM DETACHED HOME



Individual plots may vary, please speak to the Sales Adviser



The sash-style windows give this detached home a delightfully traditional look. Yet inside, the open-plan kitchen – with its dining and family areas and separate utility room – is designed very much for busy, modern living. French doors to the garden

give the whole room a bright and airy feeling. The spacious dual-aspect lounge meanwhile provides the perfect place to relax. Upstairs are two double bedrooms, the large master with en suite, a single bedroom and a family bathroom.



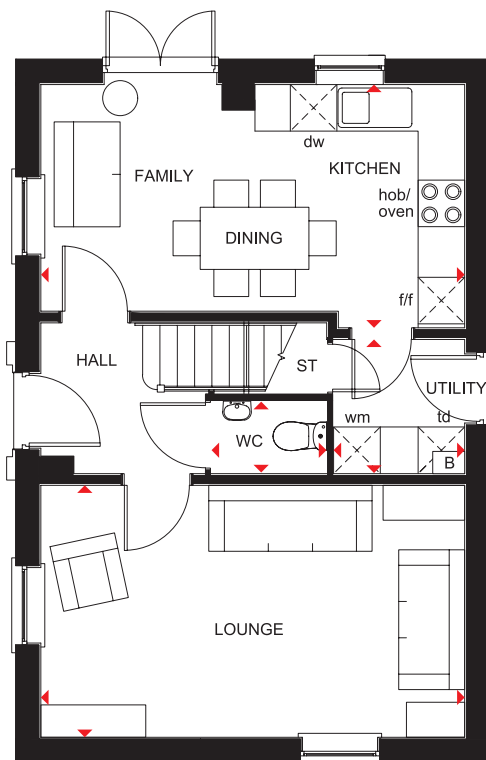
DAVID WILSON HOMES
WHERE QUALITY LIVES

THE HADLEY

THREE BEDROOM DETACHED HOME

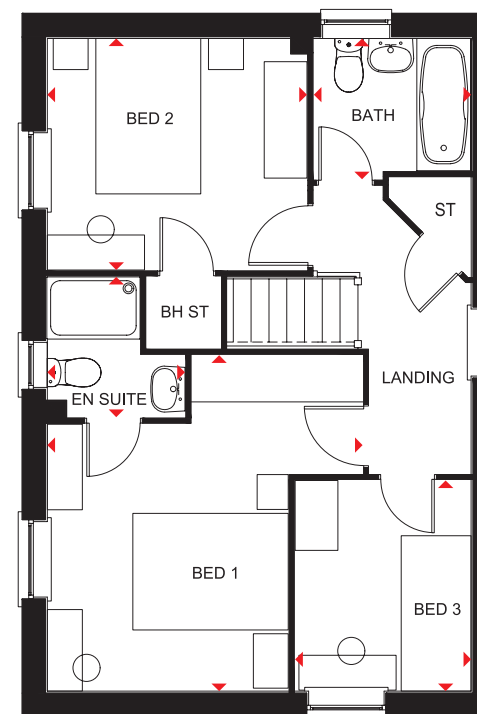
Key

B	Boiler	f/f	Fridge/freezer space	td	Tumble dryer space
ST	Store	wm	Washing machine space	◀▶	Dimension location
BH ST	Bulkhead Store	dw	Dishwasher space		



Ground Floor

Lounge	5455 x 3153 mm	17'11" x 10'4"
Kitchen/Family/Dining	5455 x 3143 mm	17'11" x 10'4"
Utility	1804 x 1688 mm	5'11" x 5'6"
WC	1480 x 1014 mm	4'10" x 3'4"



First Floor

Bedroom 1	4324 x 4058 mm	14'2" x 13'3"
En Suite	1856 x 1771 mm	6'1" x 5'9"
Bedroom 2	3341 x 2978 mm	11'3" x 9'9"
Bedroom 3	2713 x 2265 mm	8'11" x 7'5"
Bathroom	2025 x 1811 mm	6'8" x 6'0"

All images used are for illustrative purposes. These and the dimensions given are illustrative for this house type and individual properties may differ. Please check with your Sales Adviser in respect of individual properties. We give maximum dimensions within each room which includes areas of fixtures and fittings including fitted furniture. These dimensions should not be used for carpet or flooring sizes, appliance spaces or items of furniture. All images, photographs and dimensions are not intended to be relied upon for, nor to form part of, any contract unless specifically incorporated in writing into the contract.

P341 11GD DS07

dwh.co.uk



DAVID WILSON HOMES
WHERE QUALITY LIVES

THE GREENWOOD

THREE BEDROOM END-TERRACED HOME



Individual plots may vary, please speak to the Sales Adviser



The Greenwood is a flexible home designed over three floors. The ground floor has a kitchen that flows into dining and family areas, with a large walk-in glazed bay leading to the garden – and perfect extended living space in good weather. A study and

a utility cupboard are also on the ground floor, while a spacious lounge and master bedroom with en suite are on the first floor. Upstairs again, and a further two double bedrooms and the family bathroom are on the top floor, making this a great family home.



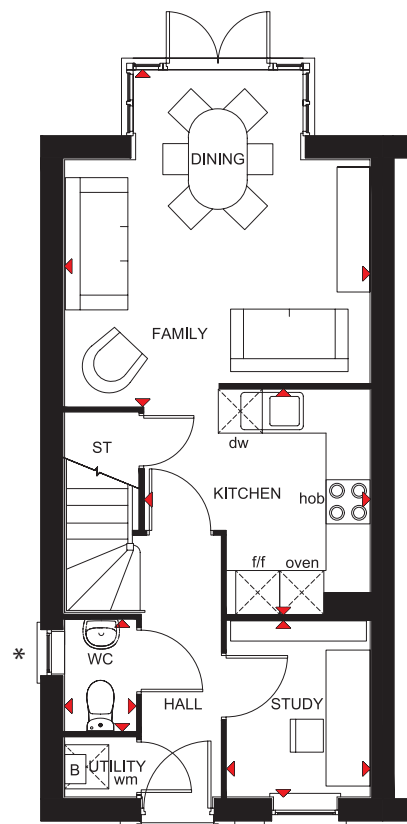
DAVID WILSON HOMES
WHERE QUALITY LIVES

THE GREENWOOD

THREE BEDROOM END-TERRACED HOME

Key

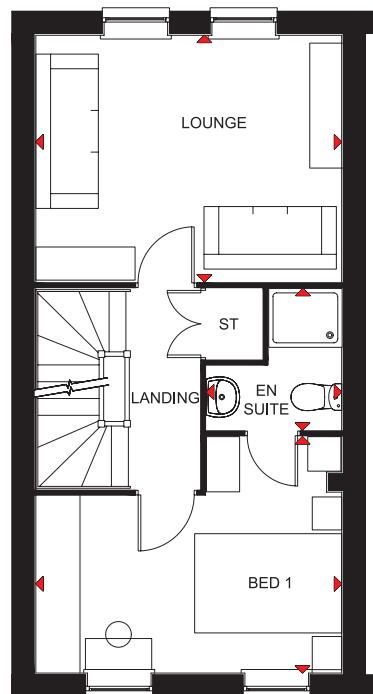
B	Boiler	wm	Washing machine space	◀ ▶	Dimension location
ST	Store	dw	Dishwasher space		
f/f	Fridge/freezer space	RL	Roof light		



Ground Floor

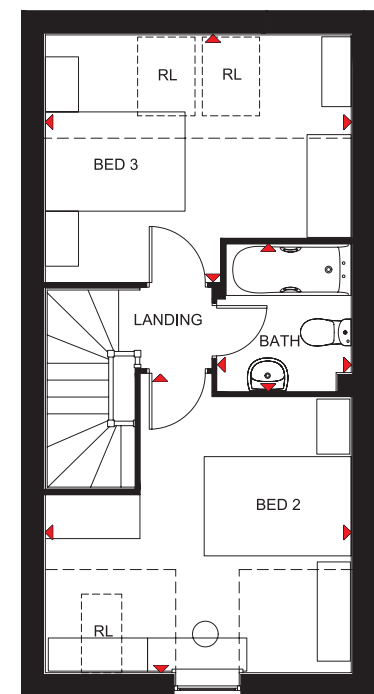
Family/Dining	4160 x 4481 mm	13'8" x 14'8"
Kitchen	3070 x 3070 mm	10'0" x 10'0"
Study	2396 x 1959 mm	7'10" x 6'5"
WC	1614 x 968 mm	5'4" x 3'2"

*Window may be omitted on certain plots.
Speak to a Sales Adviser for details on individual plots.



First Floor

Lounge	4160 x 3255 mm	13'8" x 10'8"
Bedroom 1	4160 x 3318 mm	13'8" x 10'11"
En suite	1838 x 1927 mm	6'0" x 6'4"



Second Floor

Bedroom 2	4160 x 4062 [†] mm	13'8" x 13'3" [†]
Bedroom 3	4160 x 3255 [†] mm	13'8" x 10'8" [†]
Bathroom	2000 x 1826 mm	6'7" x 6'0"

[†]Overall floor dimension includes lowered ceiling areas

All images used are for illustrative purposes. These and the dimensions given are illustrative for this house type and individual properties may differ. Please check with your Sales Adviser in respect of individual properties. We give maximum dimensions within each room which includes areas of fixtures and fittings including fitted furniture. These dimensions should not be used for carpet or flooring sizes, appliance spaces or items of furniture. All images, photographs and dimensions are not intended to be relied upon for, nor to form part of, any contract unless specifically incorporated in writing into the contract.

dwh.co.uk



DAVID WILSON HOMES
WHERE QUALITY LIVES

THE ATKINSON

THREE BEDROOM HOME



Individual plots may vary, please speak to the Sales Adviser



The Atkinson has modern living and functional fashion that ensures a warm welcome with a brightly lit entrance hall and lounge. The kitchen, with its open-plan layout leads out to the rear garden.

Upstairs you will be greeted by the spacious master bedroom, a further single and double bedroom alongside the family bathroom.

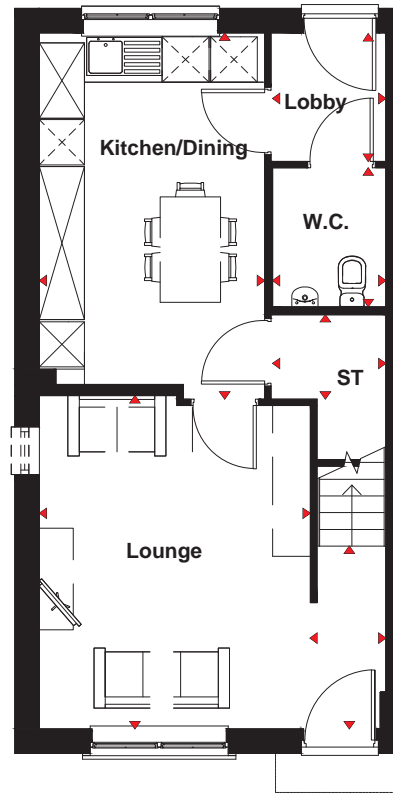


DAVID WILSON HOMES
WHERE QUALITY LIVES

THE ATKINSON

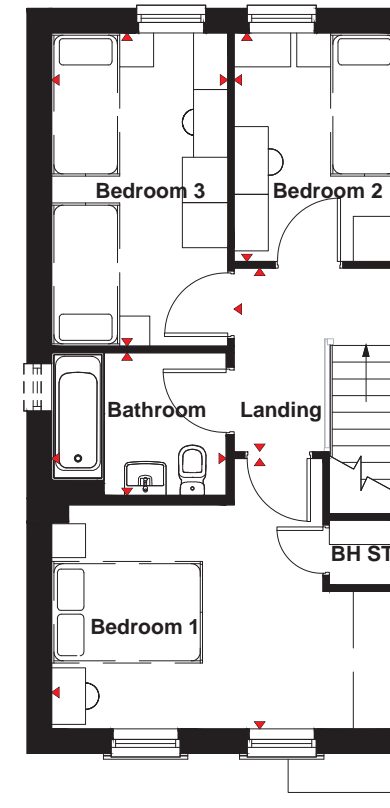
THREE BEDROOM HOME

ST	Store	wm	Washing machine space
B	Boiler	dw	Dishwasher space
f/f	Fridge/freezer space	◀▶	Dimension location



Ground Floor

Lounge	4423 x 3595 mm	14' 5" x 11' 7"
Kitchen / Dining	4857 x 2988 mm	15' 9" x 9' 8"
W.C.	1841 x 1503 mm	6' x 4' 9"
Hall	2425 x 1007 mm	7' 9" x 3' 3"
Store	1503 x 1119 mm	4' 9" x 3' 6"
Lobby	1696 x 1503 mm	5' 5" x 4' 9"



First Floor

Bed 1	4597 x 3589 mm	15' x 11' 7"
Bed 2	3032 x 2177 mm	9' 9" x 7' 1"
Bed 3	4155 x 2332 mm	13' 6" x 7' 6"
Bathroom	2314 x 1893 mm	7' 5" x 6' 2"
Landing	2430 x 2177 mm	7' 9" x 7' 1"

All images used are for illustrative purposes. These and the dimensions given are illustrative for this house type and individual properties may differ. Please check with your Sales Adviser in respect of individual properties. We give maximum dimensions within each room which includes areas of fixtures and fittings including fitted furniture. These dimensions should not be used for carpet or flooring sizes, appliance spaces or items of furniture. All images, photographs and dimensions are not intended to be relied upon for, nor to form part of, any contract unless specifically incorporated in writing into the contract.

THE ARCHFORD

THREE BEDROOM HOME



Individual plots may vary, please speak to the Sales Adviser



The sash-style windows give the Archford end-terraced home a traditional look. Inside however, the stylish open-plan kitchen and dining area is designed very much for modern living with French doors opening out onto the rear garden and creating a bright, light-filled room. A lobby, separating the kitchen and the lounge,

has stairs leading to the first floor. Here, the master bedroom has its own en suite, with a separate bathroom for the rest of the family. A further double bedroom and a single bedroom complete this attractive home.



DAVID WILSON HOMES

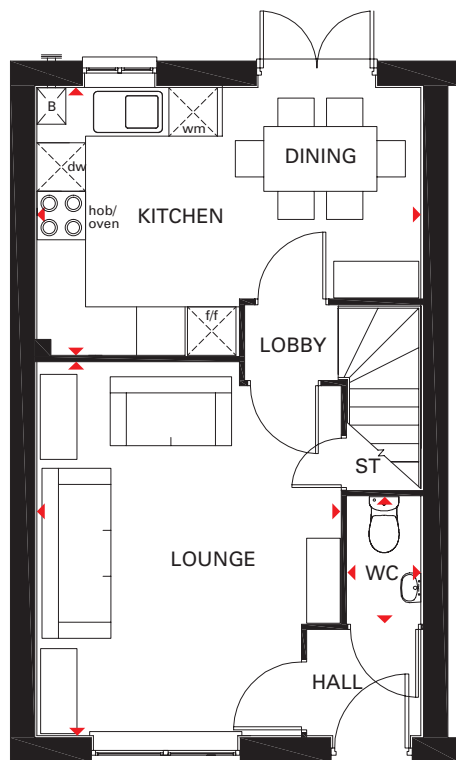
WHERE QUALITY LIVES

THE ARCHFORD

THREE BEDROOM HOME

Key

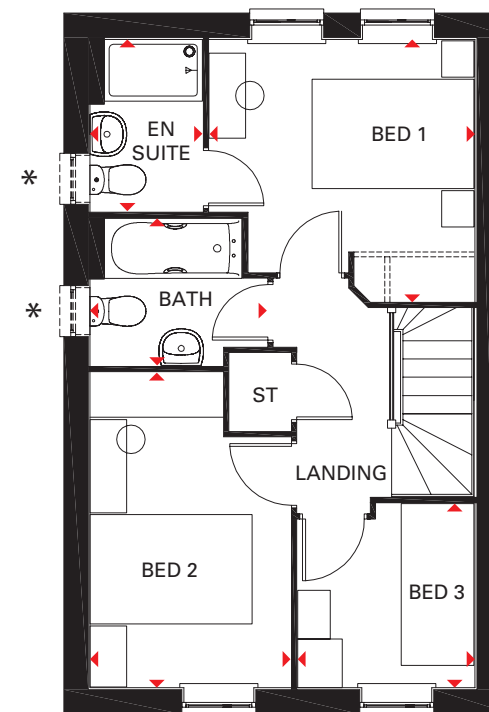
ST	Store	wm	Washing machine space
B	Boiler	dw	Dishwasher space
f/f	Fridge/freezer space	◀▶	Dimension location



Ground Floor

Lounge	4604 x 3746 mm	15'1" x 12'3"
Kitchen/Dining	4750 x 3310 mm	15'7" x 10'10"
WC	1561 x 1054 mm	5'1" x 3'5"

*Window may be omitted on certain plots.
Speak to a Sales Adviser for details on individual plots.



First Floor

Bed 1	3234 x 3276 mm	10'7" x 10'9"
En suite	1385 x 2119 mm	4'7" x 6'11"
Bed 2	2475 x 3891 mm	8'1" x 12'9"
Bed 3	2286 x 2186 mm	7'6" x 7'2"
Bath	1815 x 2181 mm	5'11" x 7'2"

All images used are for illustrative purposes. These and the dimensions given are illustrative for this house type and individual properties may differ. Please check with your Sales Adviser in respect of individual properties. We give maximum dimensions within each room which includes areas of fixtures and fittings including fitted furniture. These dimensions should not be used for carpet or flooring sizes, appliance spaces or items of furniture. All images, photographs and dimensions are not intended to be relied upon for, nor to form part of, any contract unless specifically incorporated in writing into the contract. P382-EH7 DS07

THE HADLEY

THREE BEDROOM DETACHED HOME

FEATURE



Individual plots may vary, please speak to the Sales Adviser



The sash-style windows give this detached home a delightfully traditional look. Yet inside, the open-plan kitchen – with its dining and family areas and separate utility room – is designed very much for busy, modern living. French doors to the garden

give the whole room a bright and airy feeling. The spacious dual-aspect lounge meanwhile provides the perfect place to relax. Upstairs are two double bedrooms, the large master with en suite, a single bedroom and a family bathroom.



DAVID WILSON HOMES
WHERE QUALITY LIVES

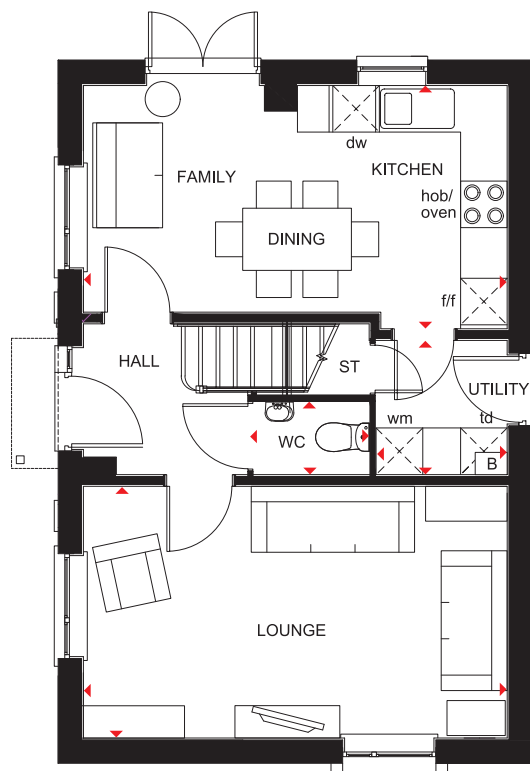
THE HADLEY

THREE BEDROOM DETACHED HOME

Key

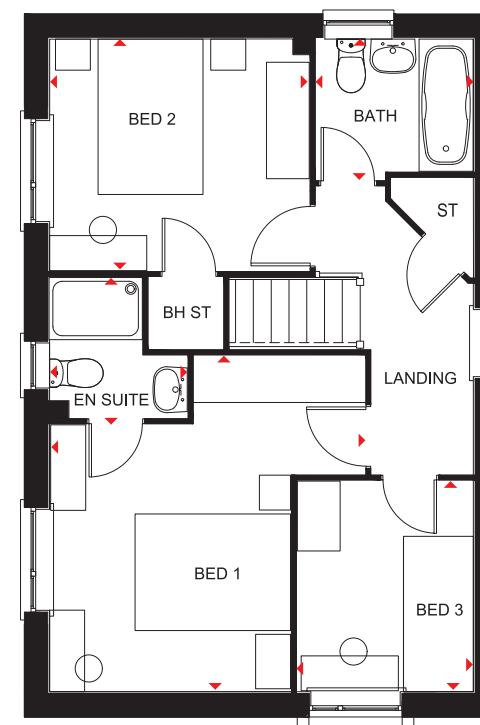
B	Boiler	f/f	Fridge/freezer space	td	Tumble dryer space
ST	Store	wm	Washing machine space	◀▶	Dimension location
BH ST	Bulkhead Store	dw	Dishwasher space		

FEATURE



Ground Floor

Lounge	5455 x 3153 mm	17'11" x 10'4"
Kitchen/Family/Dining	5455 x 3143 mm	17'11" x 10'4"
Utility	1804 x 1688 mm	5'11" x 5'6"
WC	1480 x 1014 mm	4'10" x 3'4"



First Floor

Bedroom 1	4324 x 4058 mm	14'2" x 13'3"
En Suite	1856 x 1771 mm	6'1" x 5'9"
Bedroom 2	3341 x 2978 mm	11'3" x 9'9"
Bedroom 3	2713 x 2265 mm	8'11" x 7'5"
Bathroom	2025 x 1811 mm	6'8" x 6'0"

All images used are for illustrative purposes. These and the dimensions given are illustrative for this house type and individual properties may differ. Please check with your Sales Adviser in respect of individual properties. We give maximum dimensions within each room which includes areas of fixtures and fittings including fitted furniture. These dimensions should not be used for carpet or flooring sizes, appliance spaces or items of furniture. All images, photographs and dimensions are not intended to be relied upon for, nor to form part of, any contract unless specifically incorporated in writing into the contract.

P341 11GD DS07

dwh.co.uk

CONSUMER
CODE FOR
HOME BUILDERS
www.consumercode.co.uk



DAVID WILSON HOMES
WHERE QUALITY LIVES

THE GREENWOOD

THREE BEDROOM END-TERRACED HOME

FEATURE



Individual plots may vary, please speak to the Sales Adviser



The Greenwood is a flexible home designed over three floors. The ground floor has a kitchen that flows into dining and family areas, with a large walk-in glazed bay leading to the garden – and perfect extended living space in good weather. A study and

a utility cupboard are also on the ground floor, while a spacious lounge and master bedroom with en suite are on the first floor. Upstairs again, and a further two double bedrooms and the family bathroom are on the top floor, making this a great family home.



DAVID WILSON HOMES
WHERE QUALITY LIVES

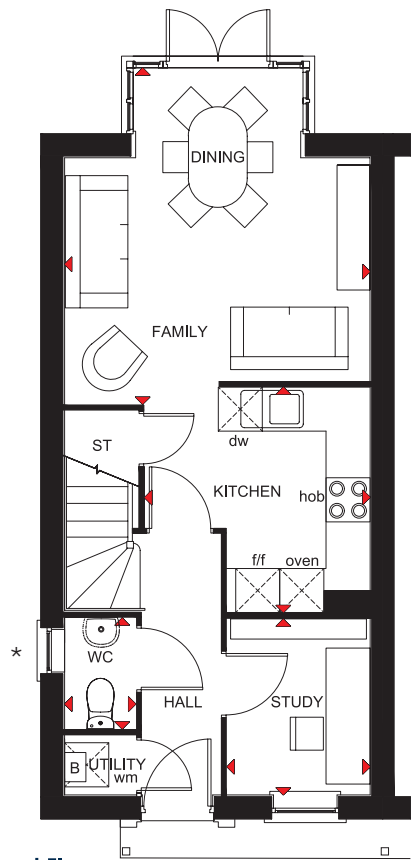
THE GREENWOOD

THREE BEDROOM END-TERRACED HOME

Key

B	Boiler	wm	Washing machine space	◀ ▶	Dimension location
ST	Store	dw	Dishwasher space		
f/f	Fridge/freezer space	RL	Roof light		

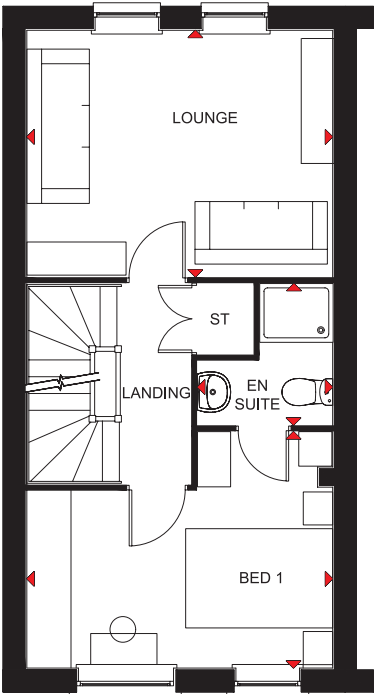
FEATURE



Ground Floor

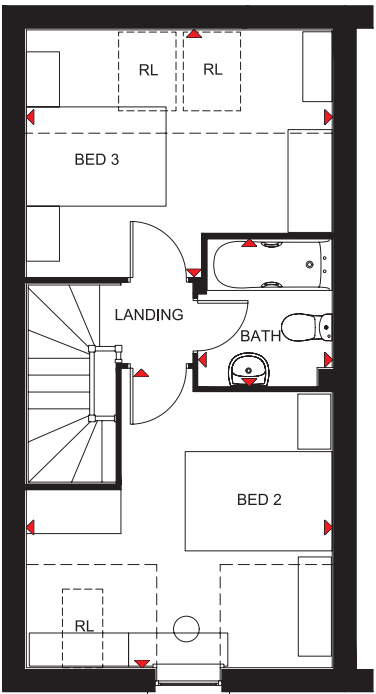
Family/Dining	4160 x 4481 mm	13'8" x 14'8"
Kitchen	3070 x 3070 mm	10'0" x 10'0"
Study	2396 x 1959 mm	7'10" x 6'5"
WC	1614 x 968 mm	5' 4" x 3'2"

*Window may be omitted on certain plots.
Speak to a Sales Adviser for details on individual plots.



First Floor

Lounge	4160 x 3255 mm	13'8" x 10'8"
Bedroom 1	4160 x 3318 mm	13'8" x 10'11"
En suite	1838 x 1927 mm	6'0" x 6'4"



Second Floor

Bedroom 2	4160 x 4062 [†] mm	13'8" x 13'3" [†]
Bedroom 3	4160 x 3255 [†] mm	13'8" x 10'8" [†]
Bathroom	2000 x 1826 mm	6'7" x 6'0"

[†]Overall floor dimension includes lowered ceiling areas

All images used are for illustrative purposes. These and the dimensions given are illustrative for this house type and individual properties may differ. Please check with your Sales Adviser in respect of individual properties. We give maximum dimensions within each room which includes areas of fixtures and fittings including fitted furniture. These dimensions should not be used for carpet or flooring sizes, appliance spaces or items of furniture. All images, photographs and dimensions are not intended to be relied upon for, nor to form part of, any contract unless specifically incorporated in writing into the contract.

T322 11EG DS07



THE CHERWELL

TWO BEDROOM APARTMENT

FEATURE



Individual plots may vary, please speak to the Sales Adviser



The Cherwell is a stunning two bedroom apartment with an airy open-plan kitchen, lounge and dining area, perfect for modern-

dayliving. The master bedroom features its very own en suite shower room. The main bathroom serves the remaining double bedroom.



DAVID WILSON HOMES
WHERE QUALITY LIVES

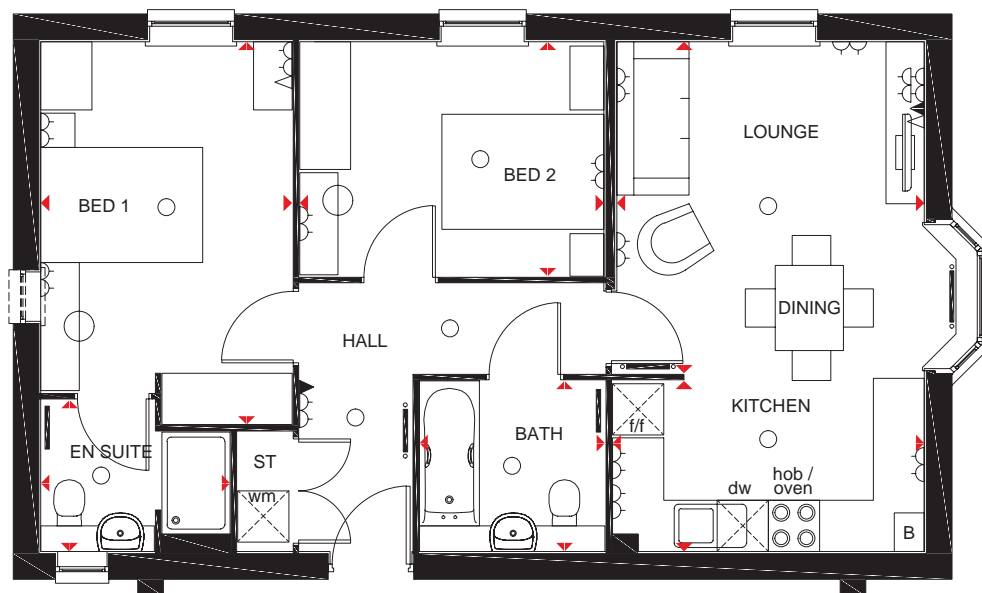
THE CHERWELL

TWO BEDROOM APARTMENT

Key

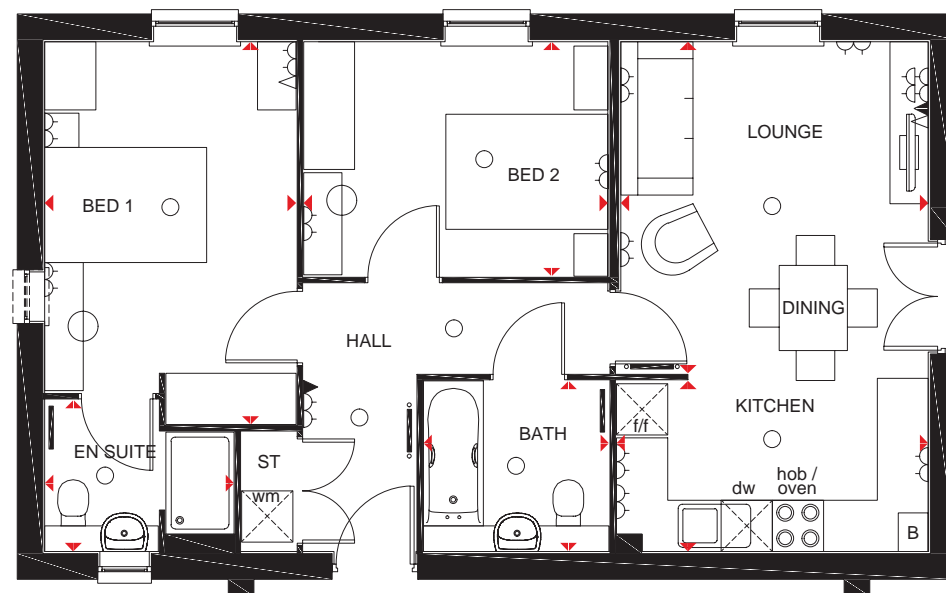
○ Light fitting	◀ Telephone outlet point	— Radiator	B Boiler	f/f Fridge/freezer space	dw Dishwasher space
◁ Electric socket	◁ T.V. aerial socket	— Towel radiator	ST Store	wm Washing machine space	◀▶ Dimension location

FEATURE



Ground Floor

Lounge/Dining	3889 x 3460 mm	12'9" x 12'0"
Kitchen	3610 x 2000 mm	11'10" x 6'7"
Bedroom 1	4489 x 2947 mm	14'9" x 9'8"
En suite	2222 x 1777 mm	7'3" x 5'10"
Bedroom 2	3570 x 2750 mm	11'9" x 9'0"
Bathroom	2174 x 2000 mm	7'2" x 6'7"



First Floor

Lounge/Dining	3889 x 3460 mm	12'9" x 12'0"
Kitchen	3610 x 2000 mm	11'10" x 6'7"
Bedroom 1	4489 x 2947 mm	14'9" x 9'8"
En suite	2222 x 1777 mm	7'3" x 5'10"
Bedroom 2	3570 x 2750 mm	11'9" x 9'0"
Bathroom	2174 x 2000 mm	7'2" x 6'7"

Floor plans are intended to give a general indication of the proposed floor layout only. Dimensions are accurate to within + or - 50mm but should not be used for carpet or flooring sizes, appliance spaces or items of furniture. Please ask our Sales Adviser for details of the treatments specified for individual plots. Individual features such as windows, brick and other materials' colours may vary, as may drainage, heating and electrical layouts. Images, photographs and dimensions are not intended to form part of any contract or warranty unless specifically incorporated in writing into the contract. SB85---5



THE AVONDALE

FOUR BEDROOM DETACHED HOME

FEATURE



Individual plots may vary, please speak to the Sales Adviser



This tasteful, double-fronted, detached home, with elegant sash-style windows, provides plenty of flexible living space. The Avondale's generous open-plan kitchen has a dedicated dining area with an attractive bay window, and a separate utility room.

A large, triple-aspect lounge leads to the garden via French doors and a separate study provides quiet space to work. Upstairs are four double bedrooms, the master with en suite, and a family bathroom with bath and shower.



DAVID WILSON HOMES

WHERE QUALITY LIVES

THE AVONDALE

FOUR BEDROOM HOME

Key

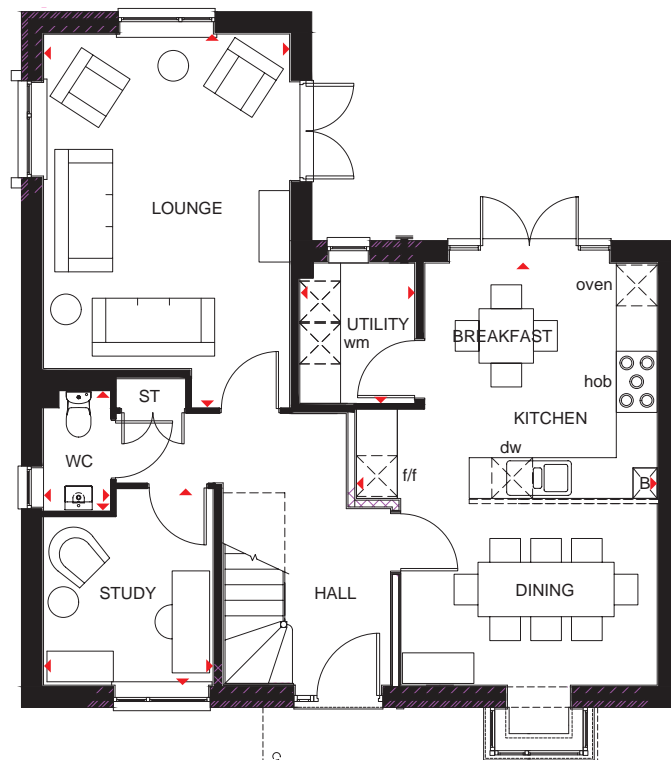
ST Store
CYL Cylinder

f/f Fridge/freezer space
wm Washing machine space

dw Dishwasher space
td Tumble dryer space

◀ ▶ Dimension location

FEATURE



Ground Floor

Lounge	5490 x 3615 mm	18'0" x 11'10"
Kitchen/ Breakfast/Dining	6600 x 4418 mm	21'7" x 14'6"
Utility	2062 x 1760 mm	6'9" x 5'9"
Study	2885 x 2490 mm	9'5" x 8'2"
WC	1768 x 983 mm	5'10" x 3'3"



First Floor

Bedroom 1	5587 x 3615 mm	18'4" x 11'10"
En suite	2222 x 1435 mm	7'3" x 4'8"
Bedroom 2	5227 x 2800 mm	17'1" x 9'2"
Bedroom 3	3566 x 3316 mm	11'8" x 10'10"
Bedroom 4	3893 x 2550 mm	12'9" x 8'4"
Bathroom	2871 x 1929 mm	9'5" x 6'4"

All images used are for illustrative purposes. These and the dimensions given are illustrative for this house type and individual properties may differ. Please check with your Sales Adviser in respect of individual properties. We give maximum dimensions within each room which includes areas of fixtures and fittings including fitted furniture. These dimensions should not be used for carpet or flooring sizes, appliance spaces or items of furniture. All images, photographs and dimensions are not intended to be relied upon for, nor to form part of, any contract unless specifically incorporated in writing into the contract. DWH 2017 H456--11XD DS11

dwh.co.uk

CONSUMER
CODE FOR
HOME BUILDERS
www.consumercode.co.uk



DAVID WILSON HOMES
WHERE QUALITY LIVES

THE ATKINSON

THREE BEDROOM HOME

FEATURE



Individual plots may vary, please speak to the Sales Adviser



The Atkinson has modern living and functional fashion that ensures a warm welcome with a brightly lit entrance hall and lounge. The kitchen, with its open-plan layout leads out to the rear garden.

Upstairs you will be greeted by the spacious master bedroom, a further single and double bedroom alongside the family bathroom.



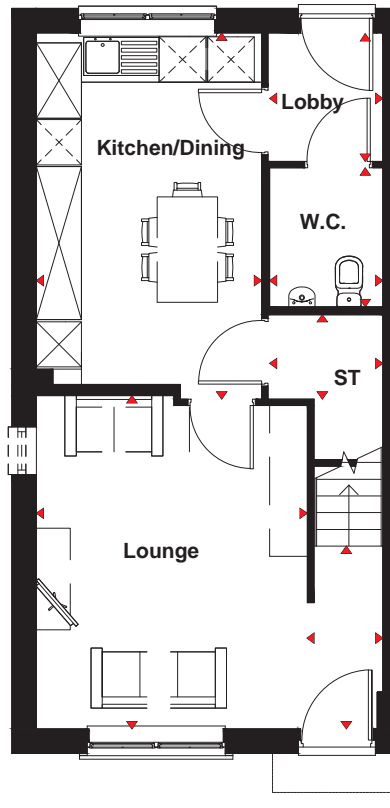
DAVID WILSON HOMES
WHERE QUALITY LIVES

THE ATKINSON

THREE BEDROOM HOME

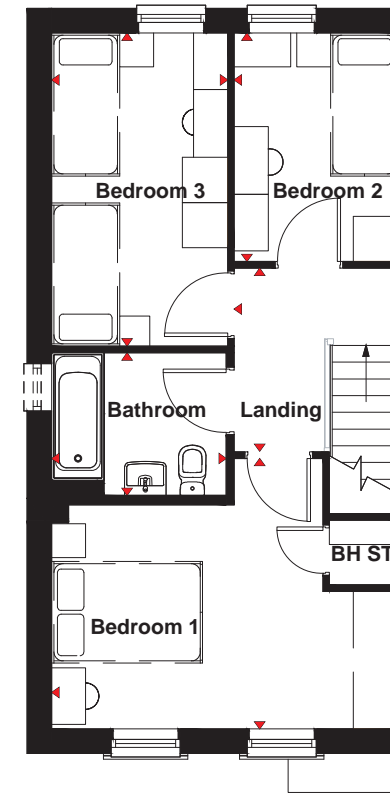
ST	Store	wm	Washing machine space
B	Boiler	dw	Dishwasher space
f/f	Fridge/freezer space	◀▶	Dimension location

FEATURE



Ground Floor

Lounge	4423 x 3595 mm	14' 5" x 11' 7"
Kitchen / Dining	4857 x 2988 mm	15' 9" x 9' 8"
W.C.	1841 x 1503 mm	6' x 4' 9"
Hall	2425 x 1007 mm	7' 9" x 3' 3"
Store	1503 x 1119 mm	4' 9" x 3' 6"
Lobby	1696 x 1503 mm	5' 5" x 4' 9"



First Floor

Bed 1	4597 x 3589 mm	15' x 11' 7"
Bed 2	3032 x 2177 mm	9' 9" x 7' 1"
Bed 3	4155 x 2332 mm	13' 6" x 7' 6"
Bathroom	2314 x 1893 mm	7' 5" x 6' 2"
Landing	2430 x 2177 mm	7' 9" x 7' 1"

All images used are for illustrative purposes. These and the dimensions given are illustrative for this house type and individual properties may differ. Please check with your Sales Adviser in respect of individual properties. We give maximum dimensions within each room which includes areas of fixtures and fittings including fitted furniture. These dimensions should not be used for carpet or flooring sizes, appliance spaces or items of furniture. All images, photographs and dimensions are not intended to be relied upon for, nor to form part of, any contract unless specifically incorporated in writing into the contract.

dwh.co.uk



DAVID WILSON HOMES
WHERE QUALITY LIVES

THE ARCHFORD

THREE BEDROOM HOME

FEATURE



Individual plots may vary, please speak to the Sales Adviser



The sash-style windows give the Archford end-terraced home a traditional look. Inside however, the stylish open-plan kitchen and dining area is designed very much for modern living with French doors opening out onto the rear garden and creating a bright, light-filled room. A lobby, separating the kitchen and the lounge,

has stairs leading to the first floor. Here, the master bedroom has its own en suite, with a separate bathroom for the rest of the family. A further double bedroom and a single bedroom complete this attractive home.



DAVID WILSON HOMES

WHERE QUALITY LIVES

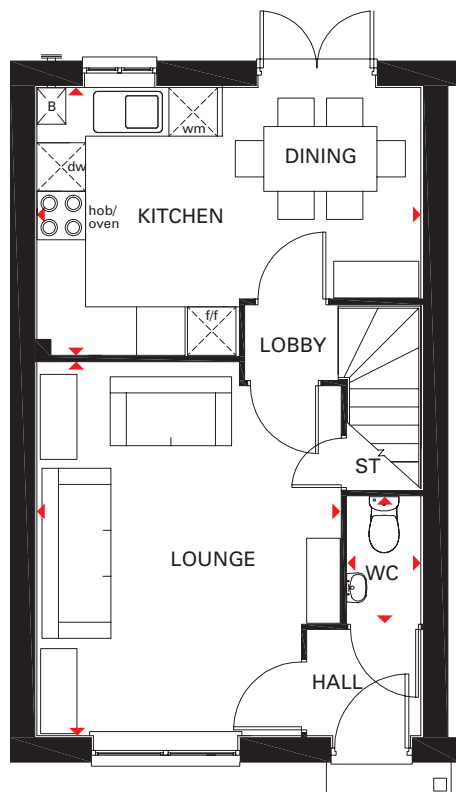
THE ARCHFORD

THREE BEDROOM HOME

Key

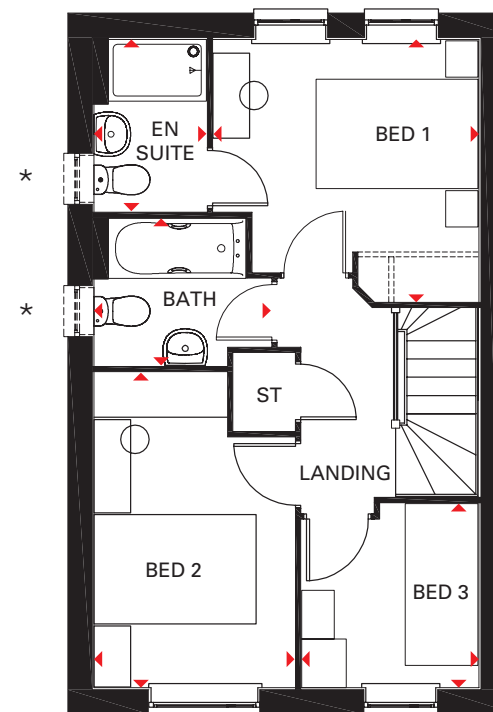
ST	Store	wm	Washing machine space
B	Boiler	dw	Dishwasher space
f/f	Fridge/freezer space	◀▶	Dimension location

FEATURE



Ground Floor

Lounge	4604 x 3746 mm	15'1" x 12'3"
Kitchen/Dining	4750 x 3310 mm	15'7" x 10'10"
WC	1561 x 1054 mm	5'1" x 3'5"



First Floor

Bed 1	3234 x 3276 mm	10'7" x 10'9"
En suite	1385 x 2119 mm	4'7" x 6'11"
Bed 2	2475 x 3891 mm	8'1" x 12'9"
Bed 3	2286 x 2186 mm	7'6" x 7'2"
Bath	1815 x 2181 mm	5'11" x 7'2"

*Window may be omitted on certain plots. Speak to a Sales Adviser for details on individual plots.

All images used are for illustrative purposes. These and the dimensions given are illustrative for this house type and individual properties may differ. Please check with your Sales Adviser in respect of individual properties. We give maximum dimensions within each room which includes areas of fixtures and fittings including fitted furniture. These dimensions should not be used for carpet or flooring sizes, appliance spaces or items of furniture. All images, photographs and dimensions are not intended to be relied upon for, nor to form part of, any contract unless specifically incorporated in writing into the contract.

P382-11HE DS07

dwh.co.uk



DAVID WILSON HOMES
WHERE QUALITY LIVES

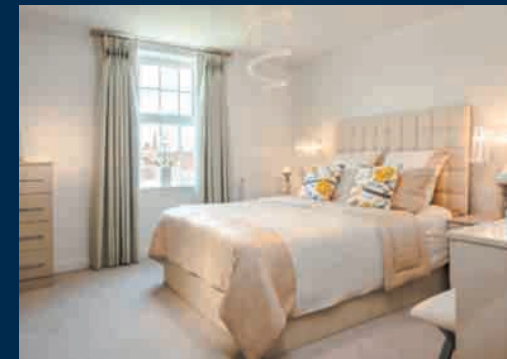
THE HERTFORD

FOUR BEDROOM DETACHED HOME

FEATURE



Individual plots may vary, please speak to the Sales Adviser



Designed over three floors, The Hertford is a spacious family home. A large open-plan dining area and kitchen – with separate utility – and a beautiful glazed walk-in bay with French doors leading to the garden, provide an abundance of flexible living space. Attractive bay windows in the dining area and the dual-

aspect lounge ensure this home offers a bright welcome. Two double bedrooms, the spacious master with en suite and dressing area, and the family bathroom are on the first floor. Upstairs are a further double bedroom, a single bedroom and a shower room.



DAVID WILSON HOMES

WHERE QUALITY LIVES

THE HERTFORD

FOUR BEDROOM DETACHED HOME

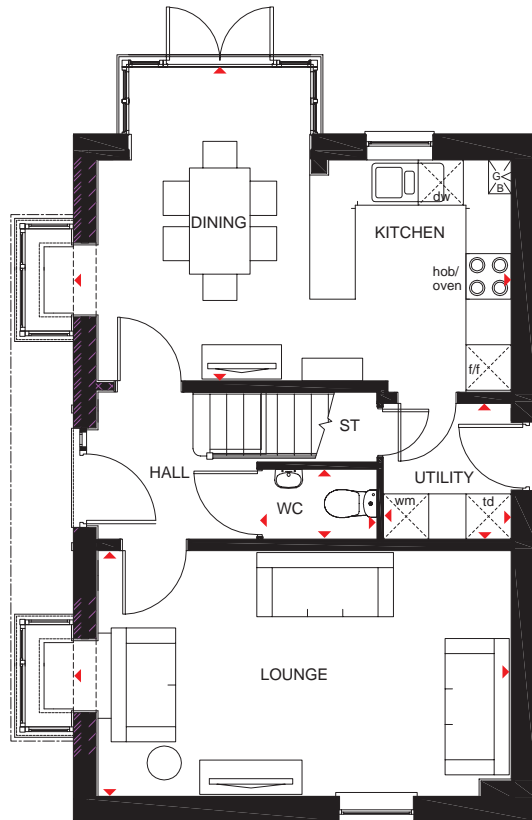
Key

ST Store
CYL Cylinder
f/f Fridge/freezer space

wm Washing machine space
dw Dishwasher space
td Tumble dryer space

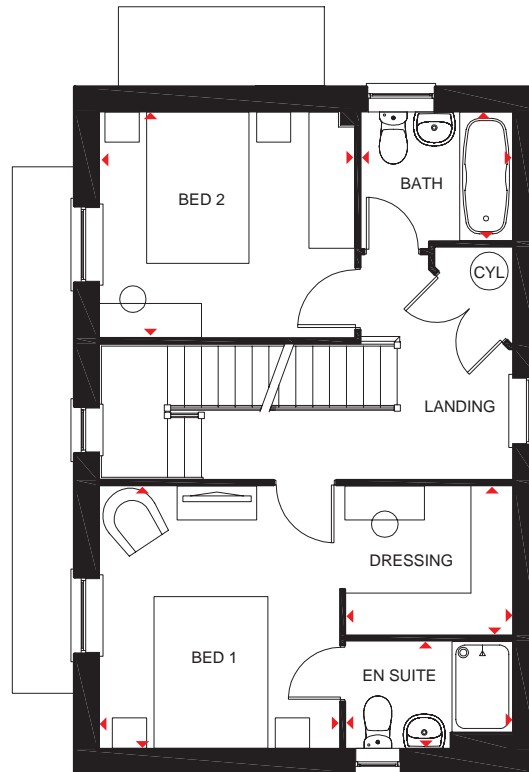
◀▶ Dimension location

FEATURE



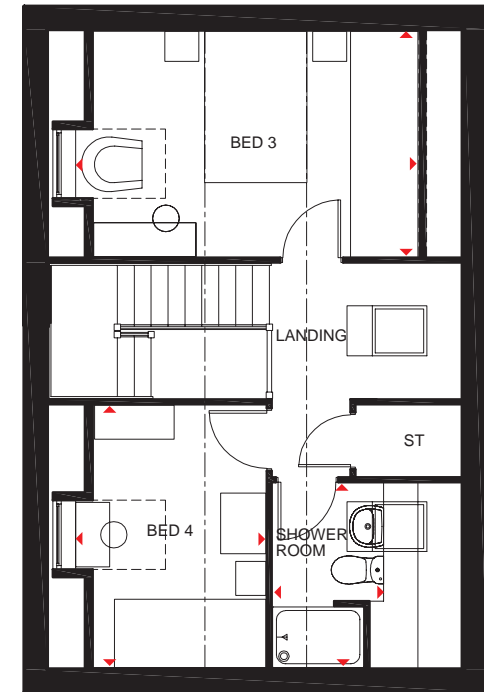
Ground Floor

Lounge	5852 x 3178 mm	19'2" x 10'5"
Kitchen/Dining	5852 x 4142 mm	19'2" x 13'7"
Utility	1688 x 1855 mm	5'6" x 6'1"
WC	1500 x 1014 mm	4'11" x 3'4"



First Floor

Bed 1	3462 x 3166 mm	11'4" x 10'4"
En suite	2200 x 1410 mm	7'2" x 4'7"
Dressing	2200 x 1963 mm	7'2" x 6'5"
Bed 2	3366 x 2978 mm	11'0" x 9'9"
Bath	2000 x 1700 mm	6'6" x 5'6"



Second Floor

Bed 3	4540* x 2978 mm	14'10"* x 9'9"
Bed 4	3462 x 2537* mm	11'4" x 8'3"*
Shower room	2432 x 1464* mm	7'11" x 4'9"*

*Overall floor dimension includes lowered ceiling areas

All images used are for illustrative purposes. These and the dimensions given are illustrative for this house type and individual properties may differ. Please check with your Sales Adviser in respect of individual properties. We give maximum dimensions within each room which includes areas of fixtures and fittings including fitted furniture. These dimensions should not be used for carpet or flooring sizes, appliance spaces or items of furniture. All images, photographs and dimensions are not intended to be relied upon for, nor to form part of, any contract unless specifically incorporated in writing into the contract. H470 11GD DS06

dwh.co.uk

CONSUMER
CODE FOR
HOME BUILDERS
www.consumercode.co.uk



DAVID WILSON HOMES
WHERE QUALITY LIVES

THE ARCHFORD

THREE BEDROOM HOME

CONTEMPORARY



Individual plots may vary, please speak to the Sales Adviser



The sash-style windows give the Archford end-terraced home a traditional look. Inside however, the stylish open-plan kitchen and dining area is designed very much for modern living with French doors opening out onto the rear garden and creating a bright, light-filled room. A lobby, separating the kitchen and the lounge,

has stairs leading to the first floor. Here, the master bedroom has its own en suite, with a separate bathroom for the rest of the family. A further double bedroom and a single bedroom complete this attractive home.



DAVID WILSON HOMES

WHERE QUALITY LIVES

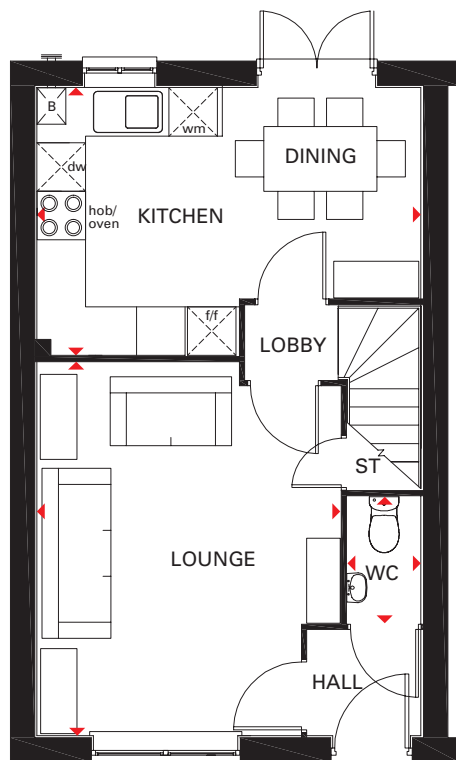
THE ARCHFORD

THREE BEDROOM HOME

Key

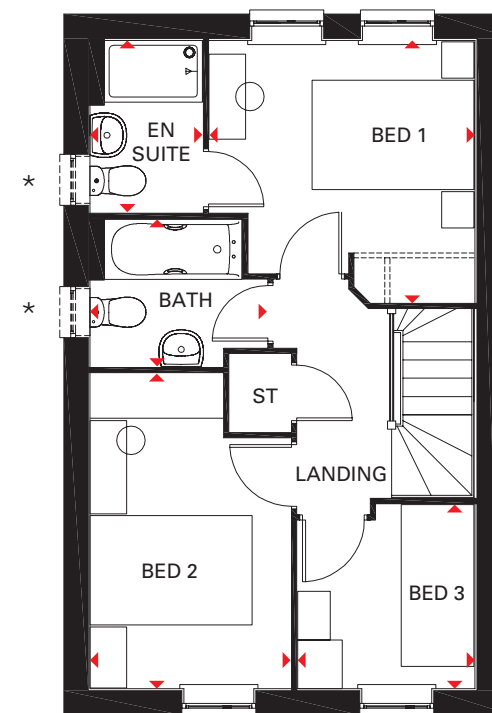
ST	Store	wm	Washing machine space
B	Boiler	dw	Dishwasher space
f/f	Fridge/freezer space	◄►	Dimension location

CONTEMPORARY



Ground Floor

Lounge	4604 x 3746 mm	15'1" x 12'3"
Kitchen/Dining	4750 x 3310 mm	15'7" x 10'10"
WC	1561 x 1054 mm	5'1" x 3'5"



First Floor

Bed 1	3234 x 3276 mm	10'7" x 10'9"
En suite	1385 x 2119 mm	4'7" x 6'11"
Bed 2	2475 x 3891 mm	8'1" x 12'9"
Bed 3	2286 x 2186 mm	7'6" x 7'2"
Bath	1815 x 2181 mm	5'11" x 7'2"

*Window may be omitted on certain plots.
Speak to a Sales Adviser for details on individual plots.

All images used are for illustrative purposes. These and the dimensions given are illustrative for this house type and individual properties may differ. Please check with your Sales Adviser in respect of individual properties. We give maximum dimensions within each room which includes areas of fixtures and fittings including fitted furniture. These dimensions should not be used for carpet or flooring sizes, appliance spaces or items of furniture. All images, photographs and dimensions are not intended to be relied upon for, nor to form part of, any contract unless specifically incorporated in writing into the contract. P382-11GE DS03

dwh.co.uk

CONSUMER
CODE FOR
HOME BUILDERS
www.consumercode.co.uk



DAVID WILSON HOMES
WHERE QUALITY LIVES

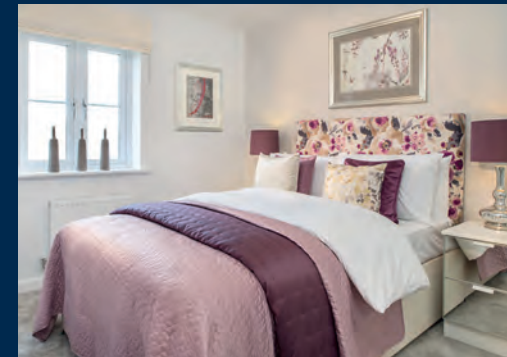
THE WINCHAM

TWO BEDROOM DETACHED HOME

CONTEMPORARY



Individual plots may vary, please speak to the Sales Adviser



An attractive first floor detached apartment with an integral garage below, The Wincham provides flexible space for modern living. The spacious open-plan lounge has a dining area while the separate kitchen

has room for a breakfast table. As well as a good-sized master bedroom, there is also a second double bedroom and a bathroom. This would make an ideal first home or one for those wishing to downsize.



DAVID WILSON HOMES

WHERE QUALITY LIVES

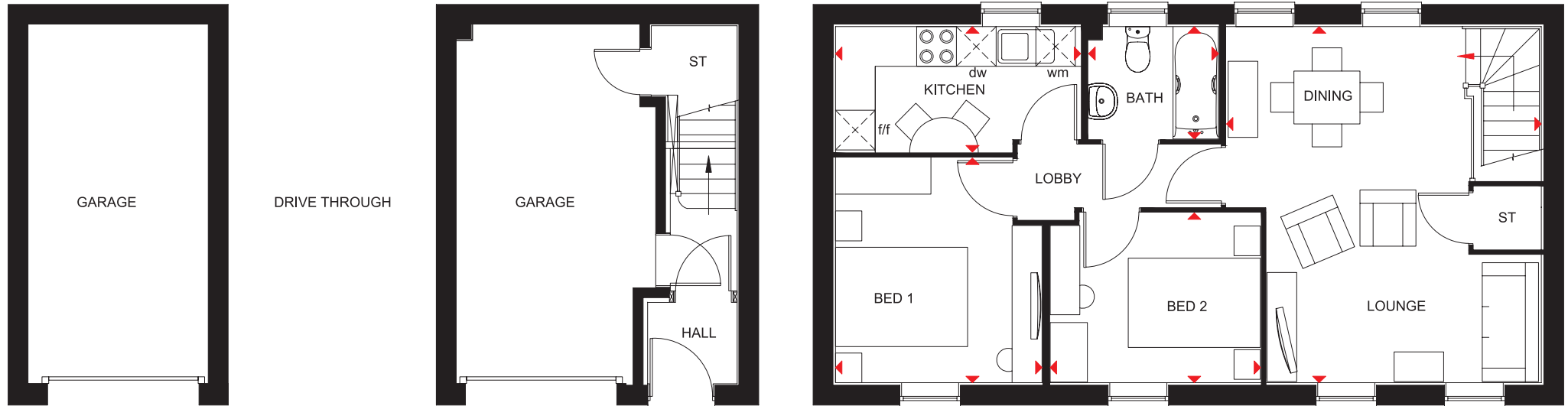
THE WINCHAM

TWO BEDROOM DETACHED HOME

Key

ST	Store	dw	Dishwasher space
f/f	Fridge/freezer space	◄ ►	Dimension location
wm	Washing machine space		

CONTEMPORARY



First Floor

Lounge/Dining	5389 x 4764 mm	17'8" x 15'8"
Bedroom 1	3403 x 3126 mm	11'2" x 10'3"
Bedroom 2	2573 x 3185 mm	8'5" x 10'5"
Kitchen	3709 x 1897 mm	12'2" x 6'3"
Bathroom	1965 x 1699 mm	6'5" x 5'7"

All images used are for illustrative purposes. These and the dimensions given are illustrative for this house type and individual properties may differ. Please check with your Sales Adviser in respect of individual properties. We give maximum dimensions within each room which includes areas of fixtures and fittings including fitted furniture. These dimensions should not be used for carpet or flooring sizes, appliance spaces or items of furniture. All images, photographs and dimensions are not intended to be relied upon for, nor to form part of, any contract unless specifically incorporated in writing into the contract. P230--D7DS00/ SP358445

dwh.co.uk

CONSUMER
CODE FOR
HOME BUILDERS
www.consumercode.co.uk



DAVID WILSON HOMES
WHERE QUALITY LIVES

THE GREENWOOD

THREE BEDROOM END-TERRACED HOME

CONTEMPORARY



Individual plots may vary, please speak to the Sales Adviser



The Greenwood is a flexible home designed over three floors. The ground floor has a kitchen that flows into dining and family areas, with a large walk-in glazed bay leading to the garden – and perfect extended living space in good weather. A study and

a utility cupboard are also on the ground floor, while a spacious lounge and master bedroom with en suite are on the first floor. Upstairs again, and a further two double bedrooms and the family bathroom are on the top floor, making this a great family home.



DAVID WILSON HOMES
WHERE QUALITY LIVES

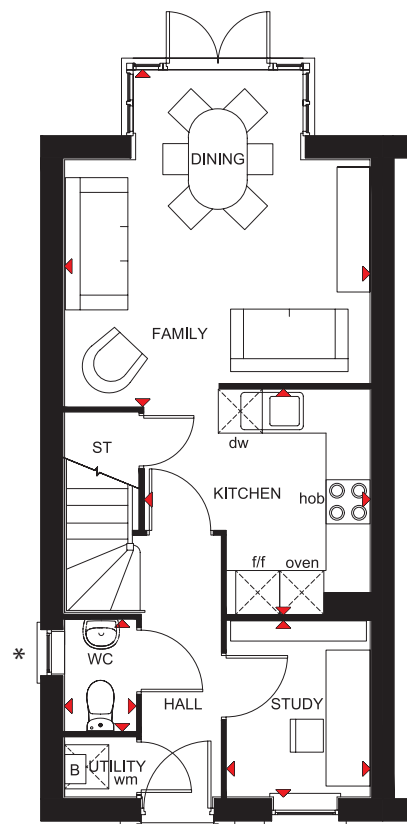
THE GREENWOOD

THREE BEDROOM END-TERRACED HOME

Key

B	Boiler	wm	Washing machine space	◀ ▶	Dimension location
ST	Store	dw	Dishwasher space		
f/f	Fridge/freezer space	RL	Roof light		

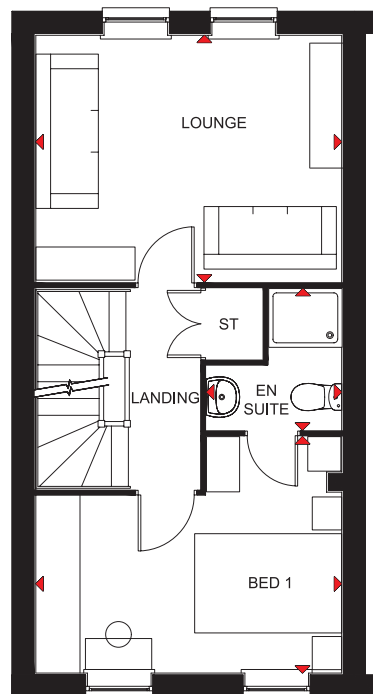
CONTEMPORARY



Ground Floor

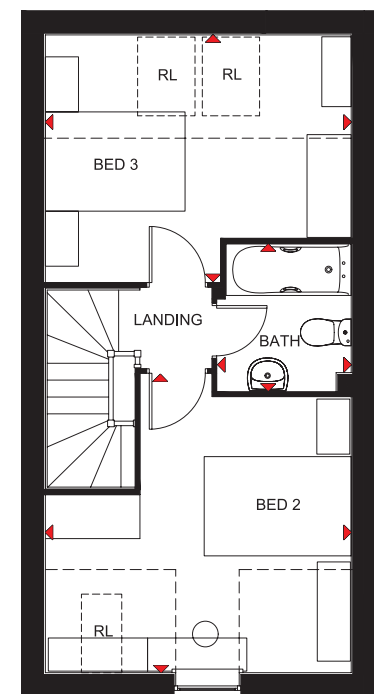
Family/Dining	4160 x 4481 mm	13'8" x 14'8"
Kitchen	3070 x 3070 mm	10'0" x 10'0"
Study	2396 x 1959 mm	7'10" x 6'5"
WC	1614 x 968 mm	5'4" x 3'2"

*Window may be omitted on certain plots.
Speak to a Sales Adviser for details on individual plots.



First Floor

Lounge	4160 x 3255 mm	13'8" x 10'8"
Bedroom 1	4160 x 3318 mm	13'8" x 10'11"
En suite	1838 x 1927 mm	6'0" x 6'4"



Second Floor

Bedroom 2	4160 x 4062 [†] mm	13'8" x 13'3" [†]
Bedroom 3	4160 x 3255 [†] mm	13'8" x 10'8" [†]
Bathroom	2000 x 1826 mm	6'7" x 6'0"

[†]Overall floor dimension includes lowered ceiling areas

All images used are for illustrative purposes. These and the dimensions given are illustrative for this house type and individual properties may differ. Please check with your Sales Adviser in respect of individual properties. We give maximum dimensions within each room which includes areas of fixtures and fittings including fitted furniture. These dimensions should not be used for carpet or flooring sizes, appliance spaces or items of furniture. All images, photographs and dimensions are not intended to be relied upon for, nor to form part of, any contract unless specifically incorporated in writing into the contract.

T322 11GE DS07/SP395367

dwh.co.uk



DAVID WILSON HOMES
WHERE QUALITY LIVES

THE FAIRWAY

THREE BEDROOM DETACHED HOME

CONTEMPORARY



Individual plots may vary, please speak to the Sales Adviser



The Fairway demonstrates a clever use of design on a corner plot to create an attractive detached family home. Both the large open-plan kitchen, with dining and family areas, and the long lounge are bright

and airy places thanks to French doors leading from both rooms to the rear garden. Upstairs, a galleried landing leads to two double bedrooms - the master with en suite - a single bedroom and the family bathroom.



DAVID WILSON HOMES
WHERE QUALITY LIVES

THE FAIRWAY

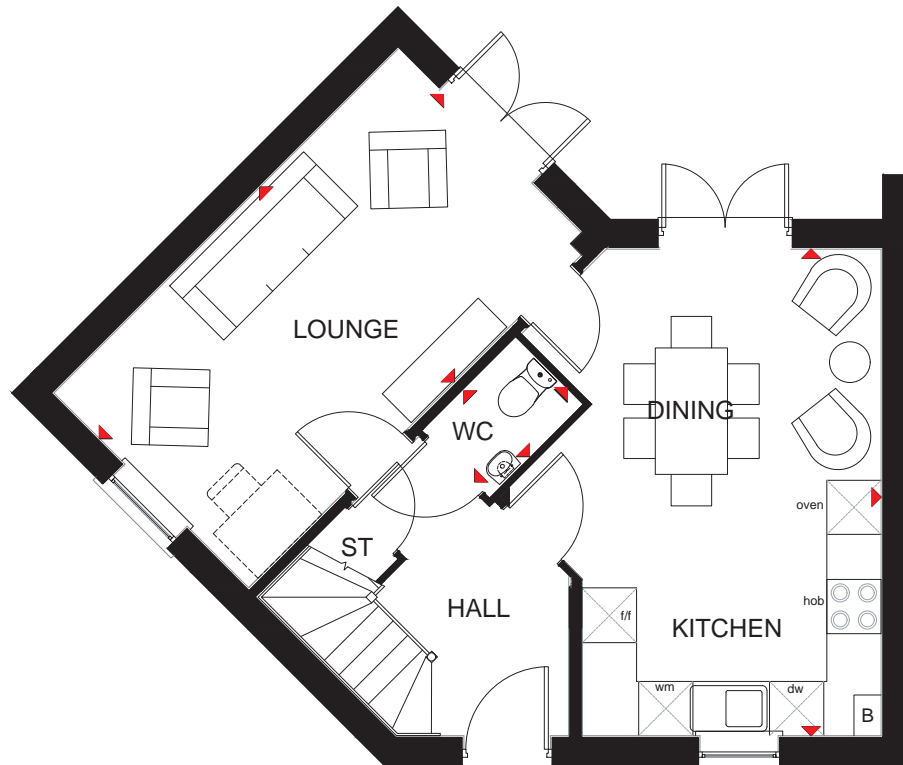
THREE BEDROOM DETACHED HOME

Key

ST Store
B Boiler
f/f Fridge/freezer space

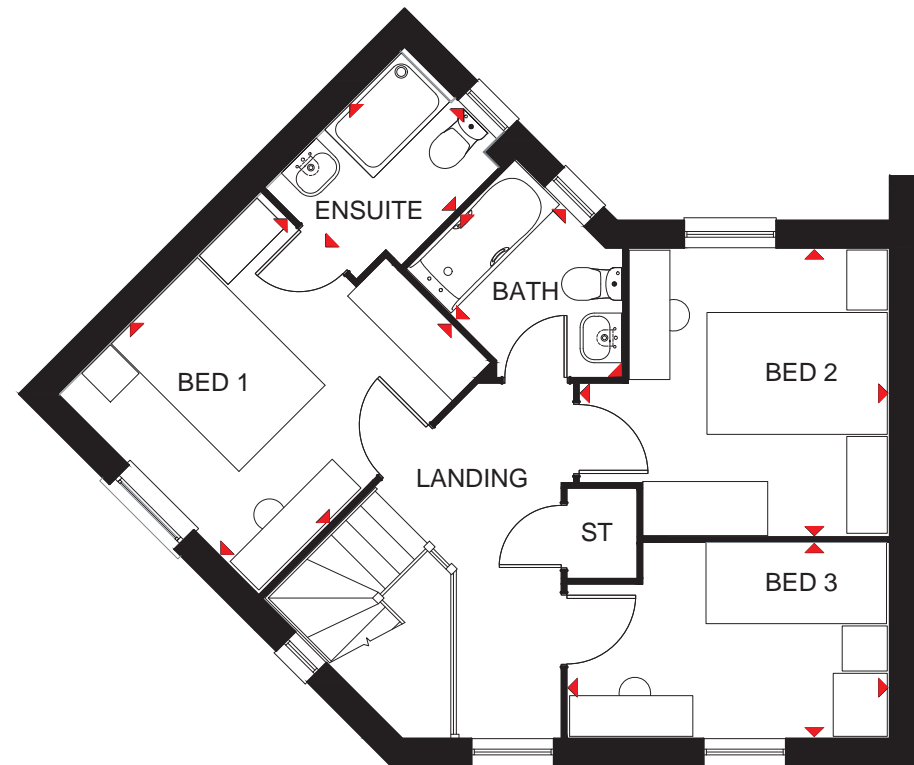
wm Washing machine space
dw Dishwasher space
◀▶ Dimension location

CONTEMPORARY



Ground Floor

Lounge	5390 x 3050 mm	17'8" x 10'0"
Kitchen/Dining	5390 x 4216 mm	17'8" x 13'10"
WC	1448 x 1025 mm	4'9" x 3'4"



First Floor

Bed 1	3601 x 3111 mm	11'10" x 10'2"
En Suite	2161 x 1650 mm	7'1" x 5'5"
Bed 2	3165 x 3406 mm	10'5" x 11'2"
Bed 3	3542 x 2136 mm	11'7" x 7'0"
Bath	2518 x 1700 mm	8'3" x 5'7"

All images used are for illustrative purposes. These and the dimensions given are illustrative for this house type and individual properties may differ. Please check with your Sales Adviser in respect of individual properties. We give maximum dimensions within each room which includes areas of fixtures and fittings including fitted furniture. These dimensions should not be used for carpet or flooring sizes, appliance spaces or items of furniture. All images, photographs and dimensions are not intended to be relied upon for, nor to form part of, any contract unless specifically incorporated in writing into the contract.

dwh.co.uk



DAVID WILSON HOMES
WHERE QUALITY LIVES