

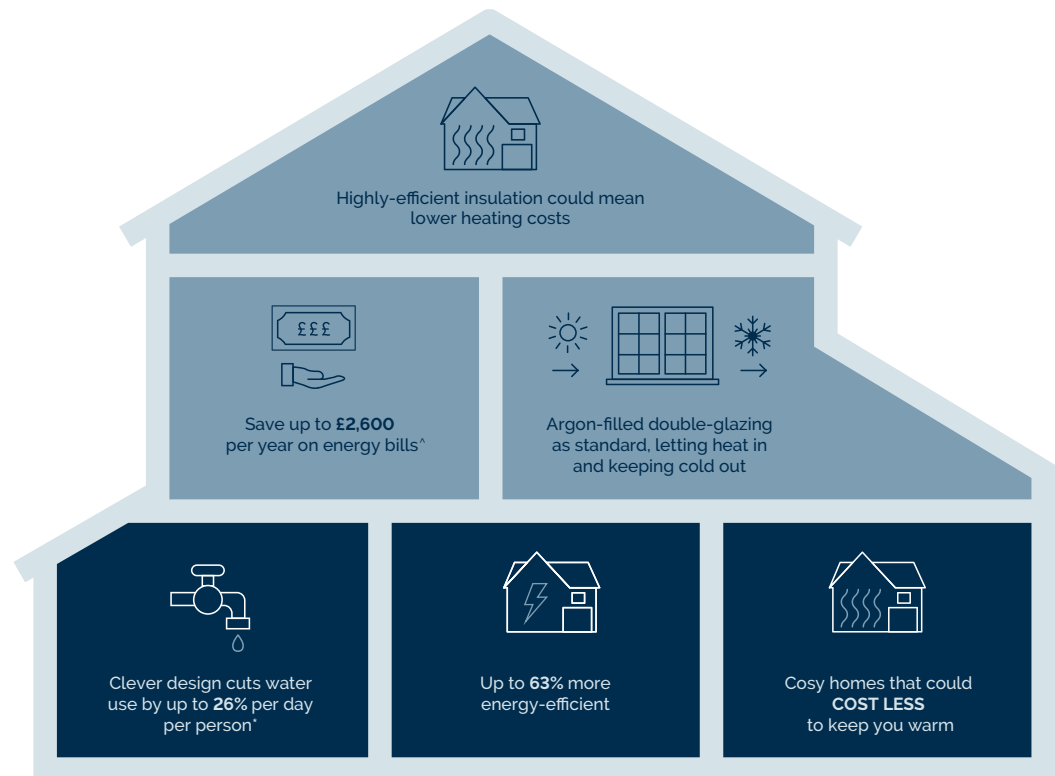


# Maylands Park

NANTWICH

# WE'RE HELPING TO MAKE YOUR HOME MORE ENERGY-EFFICIENT

We create low-carbon and efficient homes that are designed and built for better living and meet the challenges of the future.



<sup>^</sup>Indicative figures, based on HBF "Watt a Save" report published Feb 2023.

\*Source: [Water UK](#)

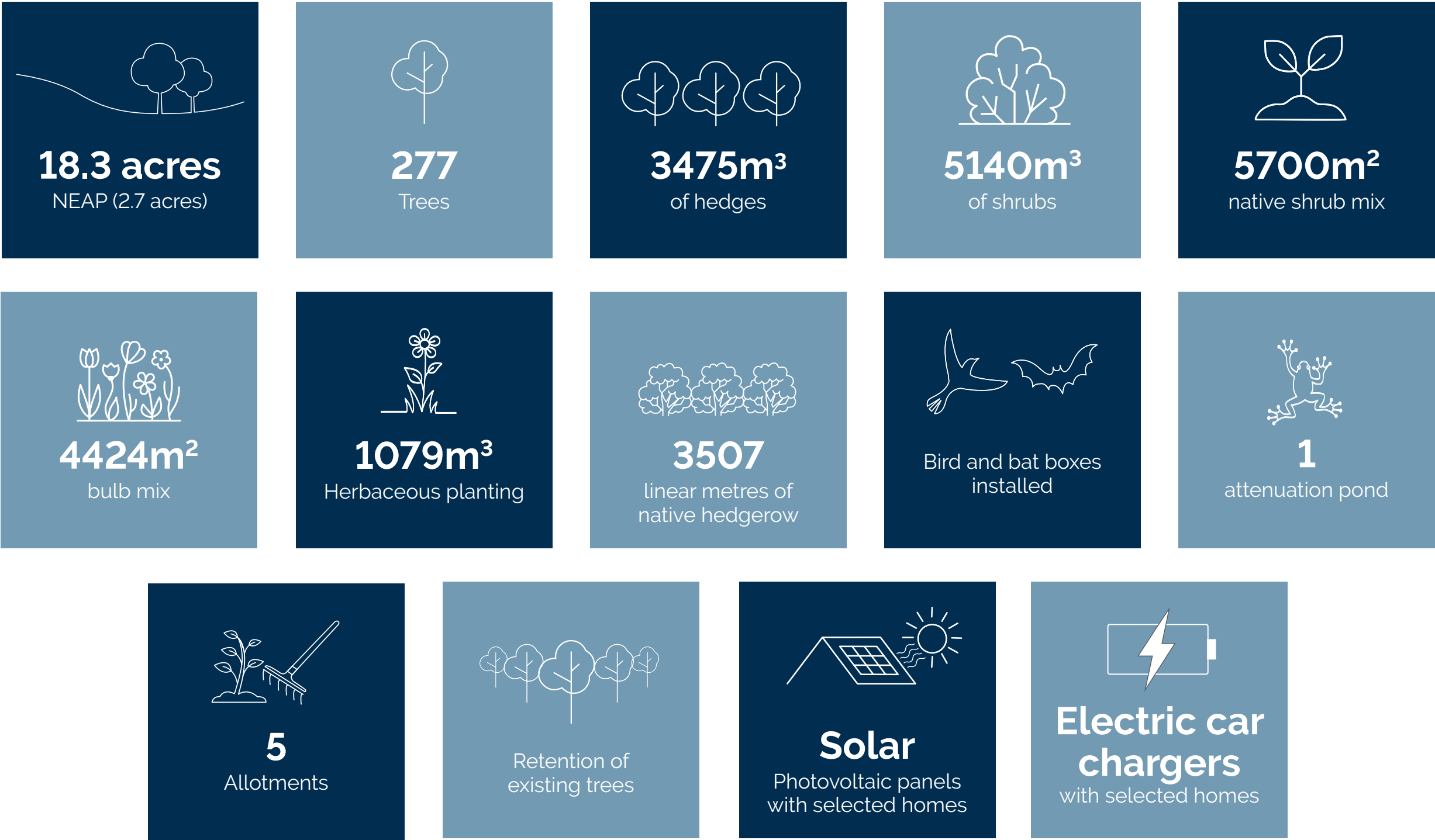


# CREATING A SUSTAINABLE COMMUNITY

WHERE FAMILIES AND NATURE CAN THRIVE AT MAYLANDS PARK



Throughout the planning process before starting build, we consider where we can introduce nature and where we can strengthen it. At David Wilson Homes, we do more than simply craft beautiful homes and desirable developments. We design and build great places that meet the highest standards, and that promote sustainable, healthy and happy living for our customers. We know we must give our customers confidence that their homes are designed and built to meet the challenges of the future. We do this through creating places where people and nature can thrive.



dwh.co.uk

DAVID WILSON HOMES  
WHERE QUALITY LIVES

'We', 'our', 'us' refers to the Barratt Developments PLC Group brands including Barratt Homes, David Wilson Homes and Barratt London. Some of the features shown may not be available with every David Wilson home or on every David Wilson development. Please speak to a Sales Adviser for details of the features available on the home and development you are interested in. To find out more about the energy-efficiency and sustainability and sustainability of our homes visit our website. All images used are for illustrative purposes only. Information correct at time of publishing.



# Maylands Park

NANTWICH

## KEY

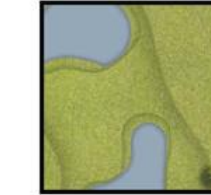
- **The Archford**  
3 bedroom home
- **The Hadley**  
3 bedroom home
- **The Kennett**  
3 bedroom home
- **The Langstone**  
3 bedroom home
- **The Dedham**  
4 bedroom home
- **The Elmswell**  
4 bedroom home
- **The Winterton**  
4 bedroom home
- **The Lynford**  
4 bedroom home
- **The Wychwood**  
4 bedroom home
- **The Culver**  
4 bedroom home
- **The Lenwade**  
5 bedroom home
- **The Pensthorpe**  
5 bedroom home
- **Affordable Rent**
- **Affordable Shared Ownership**
- ★ Marketing Suite & Show Homes

Existing Housing

Existing Housing

AREA IDENTIFIED  
FOR PUBLIC OPEN  
SPACE BY OTHERS

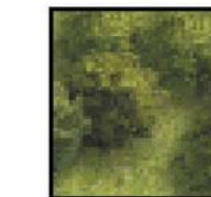
Attenuation pond



Hedges



Trees



Small Bird Nest Box



Bat Box



Swift Nesting Box



Electric Vehicle  
Charging Points



Proposed New Build  
Development

Core Elevation



Edge Elevation



Focal Elevation



Chimney

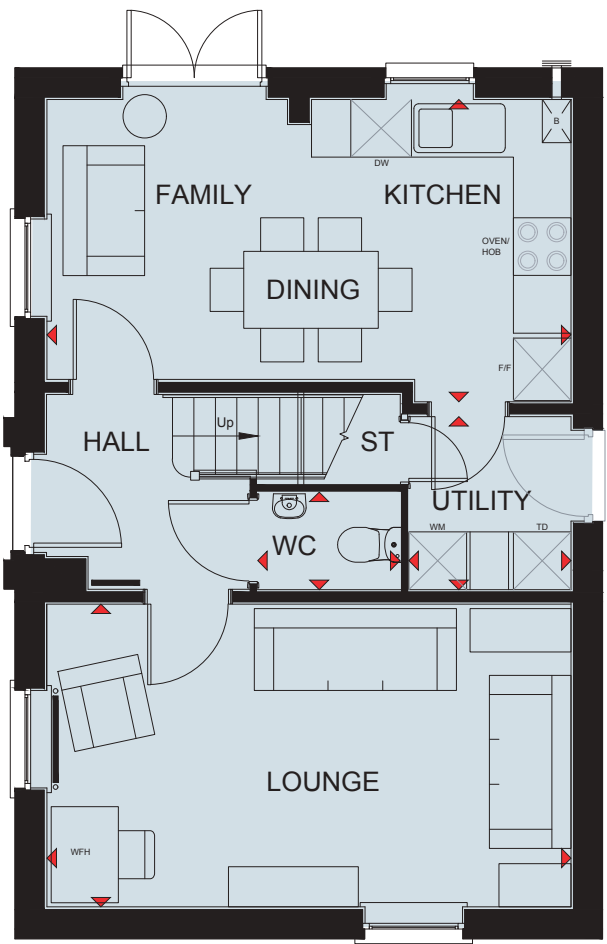




# HADLEY

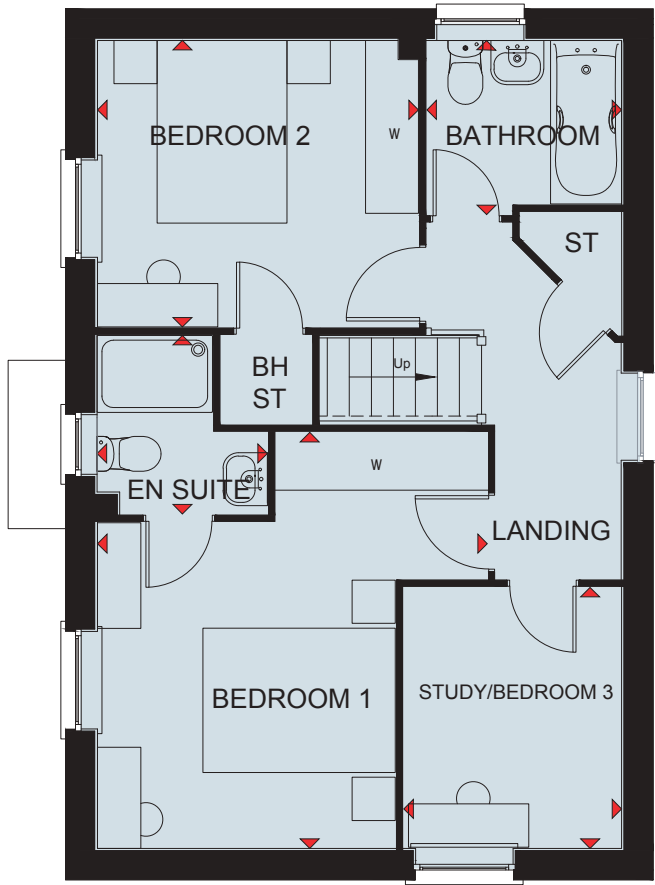
## THREE BEDROOM HOME

FOCAL



Ground Floor		
Lounge	5450 x 3148 mm	17'11" x 10'4"
Kitchen/Family/Dining	5450 x 3143 mm	17'11" x 10'4"
Utility	1799 x 1688 mm	5'11" x 5'6"
WC	1480 x 1014 mm	4'10" x 3'4"
Entrance Hall	2106 x 2030 mm	6'11" x 6'8"

\* Optional door please refer to sales adviser



First Floor		
Bedroom 1	4324 x 4053 mm	14'2" x 13'3"
En Suite	1856 x 1771 mm	6'1" x 5'9"
Bedroom 2	3336 x 2978 mm	11'3" x 9'9"
Study/Bedroom 3	2713 x 2265 mm	8'11" x 7'5"
Bathroom	2025 x 1811 mm	6'8" x 6'0"
Landing	3698 x 1458 mm	12'1" x 4'9"

\* Optional window please refer to sales adviser

### Key

B	Boiler	wm	Washing machine space	dw	Dishwasher space	W	Wardrobe space
ST	Store	f/f	Fridge/freezer space	WFH	Working from home space	◀▶	Dimension location



Scan here for more details



DAVID WILSON HOMES

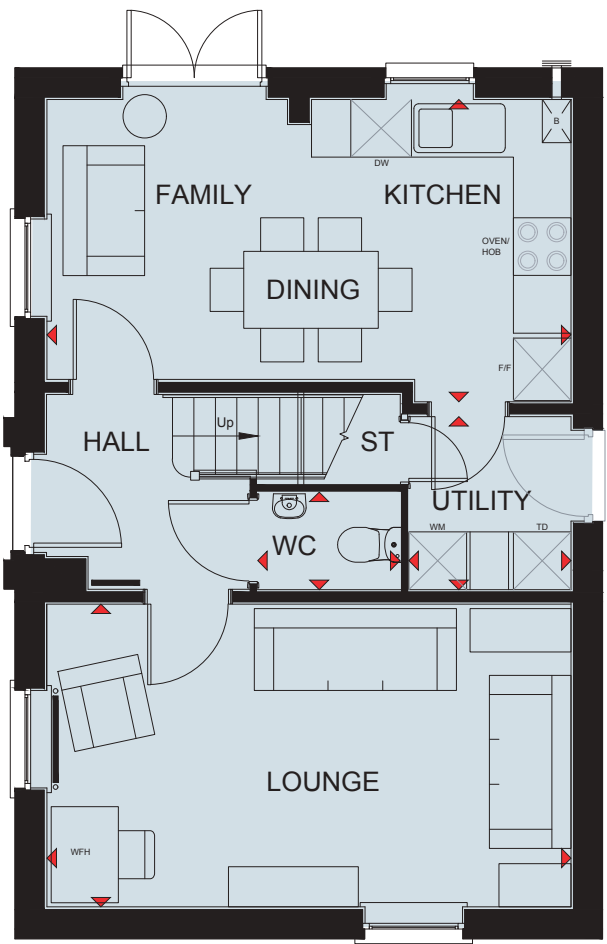
We are on the New Homes Quality Code register of registered developers. "We" refers to the Barratt Developments PLC group brands including Barratt London, Barratt Homes and David Wilson Homes. All images used are for illustrative purposes. These and the dimensions given are illustrative for this house type and individual properties may differ. Please check with your Sales Adviser in respect of individual properties. We give maximum dimensions within each room which includes areas of fixtures and fittings including fitted furniture. These dimensions should not be used for carpet or flooring sizes, appliance spaces or items of furniture. All images, photographs and dimensions are not intended to be relied upon for, nor to form part of, any contract unless specifically incorporated in writing into the contract.



# HADLEY

## THREE BEDROOM HOME

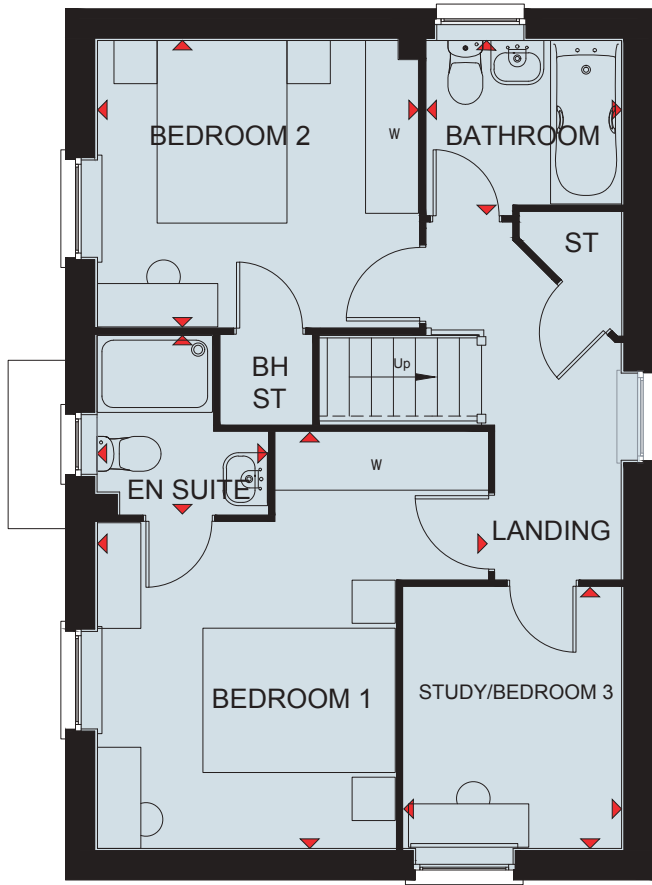
CORE



### Ground Floor

Lounge	5450 x 3148 mm	17'11" x 10'4"
Kitchen/Family/Dining	5450 x 3143 mm	17'11" x 10'4"
Utility	1799 x 1688 mm	5'11" x 5'6"
WC	1480 x 1014 mm	4'10" x 3'4"
Entrance Hall	2106 x 2030 mm	6'11" x 6'8"

\* Optional door please refer to sales adviser



### First Floor

Bedroom 1	4324 x 4053 mm	14'2" x 13'3"
En Suite	1856 x 1771 mm	6'1" x 5'9"
Bedroom 2	3336 x 2978 mm	11'3" x 9'9"
Study/Bedroom 3	2713 x 2265 mm	8'11" x 7'5"
Bathroom	2025 x 1811 mm	6'8" x 6'0"
Landing	3698 x 1458 mm	12'1" x 4'9"

\* Optional window please refer to sales adviser

### Key

B	Boiler	wm	Washing machine space	dw	Dishwasher space	W	Wardrobe space
ST	Store	f/f	Fridge/freezer space	WFH	Working from home space	◀▶	Dimension location



Scan here for more details



DAVID WILSON HOMES

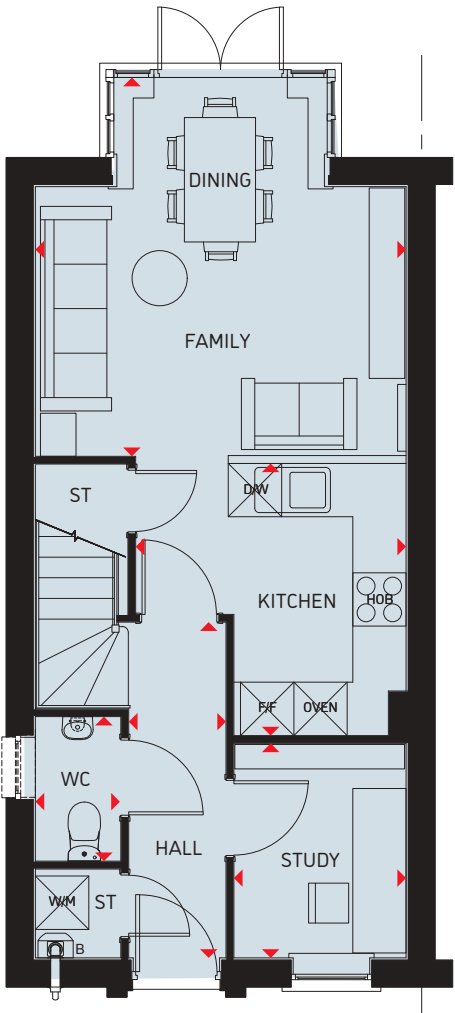
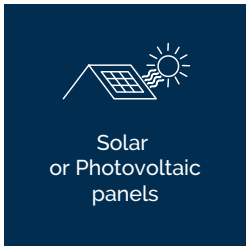
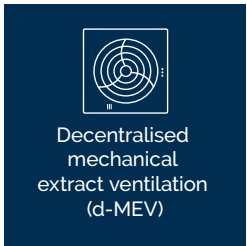
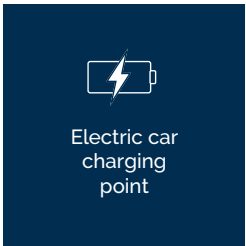
We are on the New Homes Quality Code register of registered developers. "We" refers to the Barratt Developments PLC group brands including Barratt London, Barratt Homes and David Wilson Homes. All images used are for illustrative purposes. These and the dimensions given are illustrative for this house type and individual properties may differ. Please check with your Sales Adviser in respect of individual properties. We give maximum dimensions within each room which includes areas of fixtures and fittings including fitted furniture. These dimensions should not be used for carpet or flooring sizes, appliance spaces or items of furniture. All images, photographs and dimensions are not intended to be relied upon for, nor to form part of, any contract unless specifically incorporated in writing into the contract.



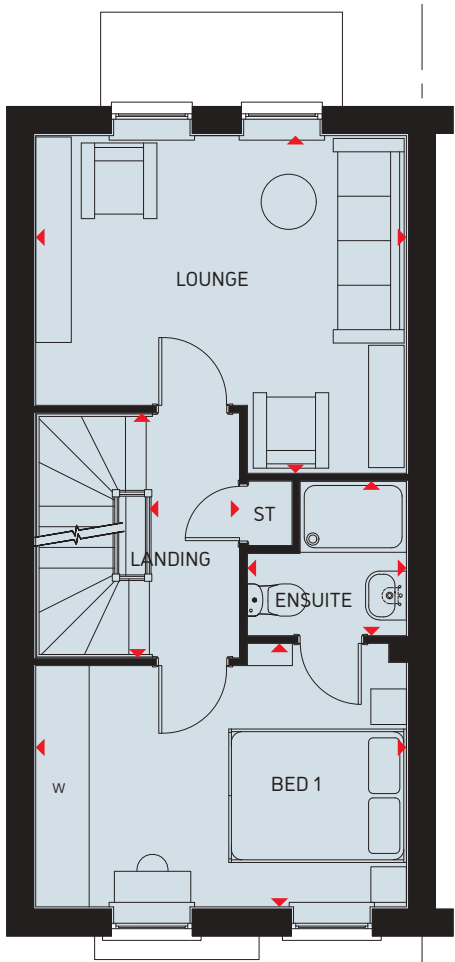
# LANGSTONE

## THREE BEDROOM HOME

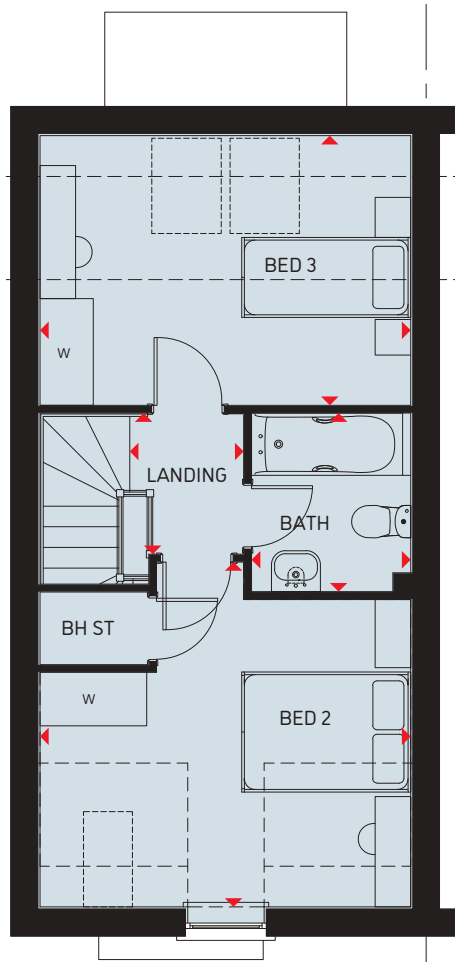
FOCAL



Ground Floor			
Family/Dining	4260 x 4170 mm	13'11" x 13'8"	
Kitchen	3060 x 3042 mm	10'0" x 10'0"	
Study	2413 x 1938 mm	7'10" x 6'4"	
WC	1625 x 962 mm	5'4" x 3'2"	
Hall	3775 x 1107 mm	12'4" x 3'7"	



First Floor			
Lounge	4170 x 3797 mm	13'8" x 12'5"	
Bed 1	4170 x 2970 mm	13'8" x 9'9"	
En suite	1790 x 1750 mm	5'10" x 5'9"	
Landing	2752 x 1014 mm	9'0" x 3'4"	



Second Floor			
Bed 2	4170 x 3877 * mm	13'8" x 12'8" *	
Bed 3	4170 x 3033 * mm	13'8" x 9'11" *	
Bath	2008 x 1790 mm	6'7" x 5'10"	
Landing	1567 x 1282 mm	5'2" x 4'2"	

\* Overall floor dimension includes lowered ceiling areas  
\* WC window to be included where plotting conditions allow

### Key

B	Boiler	wm	Washing machine space	f/f	Fridge freezer space	W	Wardrobe space	◀▶	Dimension location
ST	Store	dw	Dishwasher space	td	Tumble dryer space	RL	Rooflight		



Scan here for more details



DAVID WILSON HOMES

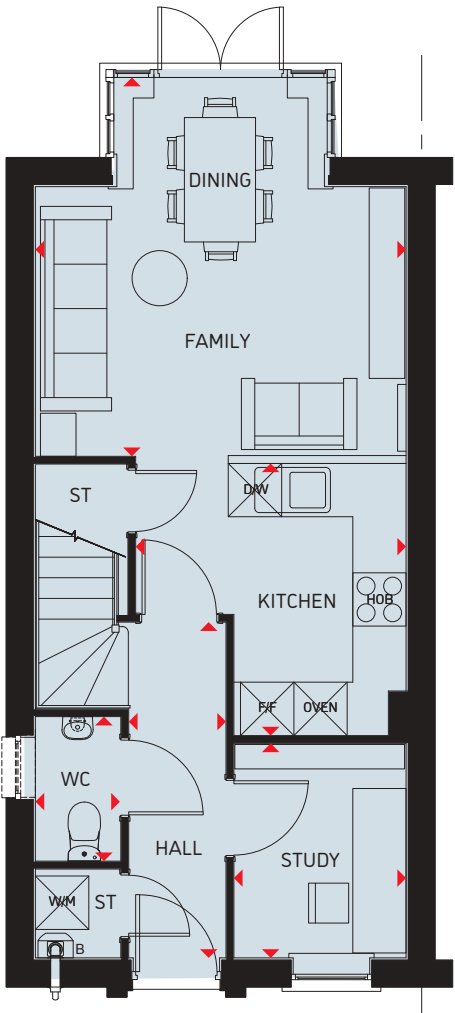
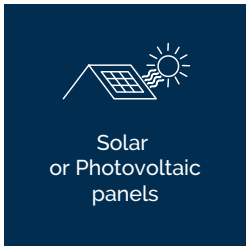
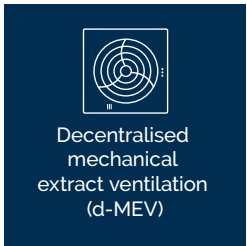
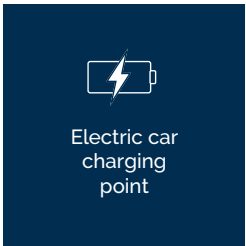
We are on the New Homes Quality Code register of registered developers. "We" refers to the Barratt Developments PLC group brands including Barratt London, Barratt Homes and David Wilson Homes. All images used are for illustrative purposes. These and the dimensions given are illustrative for this house type and individual properties may differ. Please check with your Sales Adviser in respect of individual properties. We give maximum dimensions within each room which includes areas of fixtures and fittings including fitted furniture. These dimensions should not be used for carpet or flooring sizes, appliance spaces or items of furniture. All images, photographs and dimensions are not intended to be relied upon for, nor to form part of, any contract unless specifically incorporated in writing into the contract.



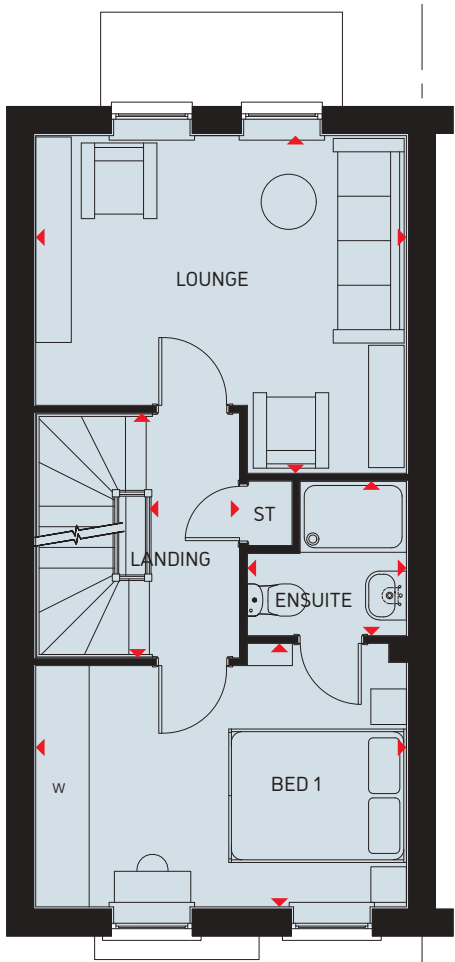
# LANGSTONE

## THREE BEDROOM HOME

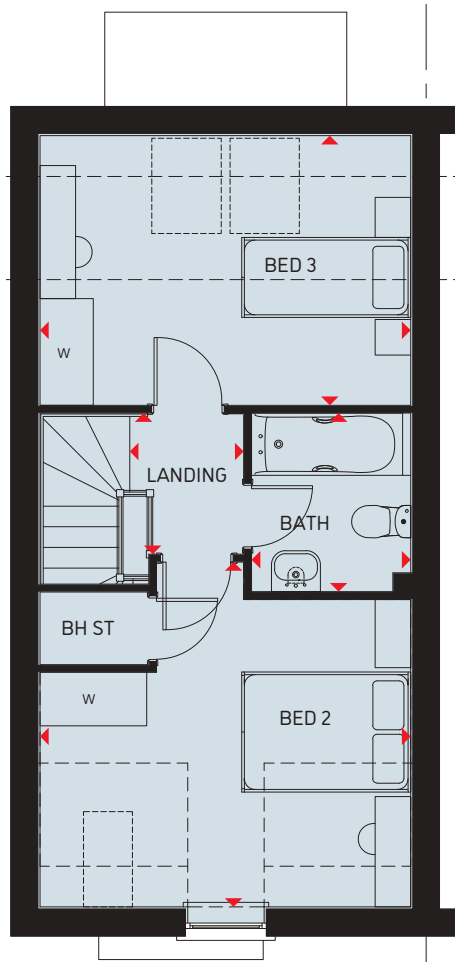
CORE



Ground Floor			
Family/Dining	4260 x 4170 mm	13'11" x 13'8"	
Kitchen	3060 x 3042 mm	10'0" x 10'0"	
Study	2413 x 1938 mm	7'10" x 6'4"	
WC	1625 x 962 mm	5'4" x 3'2"	
Hall	3775 x 1107 mm	12'4" x 3'7"	



First Floor			
Lounge	4170 x 3797 mm	13'8" x 12'5"	
Bed 1	4170 x 2970 mm	13'8" x 9'9"	
En suite	1790 x 1750 mm	5'10" x 5'9"	
Landing	2752 x 1014 mm	9'0" x 3'4"	



Second Floor			
Bed 2	4170 x 3877 * mm	13'8" x 12'8" *	
Bed 3	4170 x 3033 * mm	13'8" x 9'11" *	
Bath	2008 x 1790 mm	6'7" x 5'10"	
Landing	1567 x 1282 mm	5'2" x 4'2"	

\* Overall floor dimension includes lowered ceiling areas  
\* WC window to be included where plotting conditions allow

### Key

B	Boiler	wm	Washing machine space	f/f	Fridge freezer space	W	Wardrobe space	◀▶	Dimension location
ST	Store	dw	Dishwasher space	td	Tumble dryer space	RL	Rooflight		



Scan here for more details



DAVID WILSON HOMES

We are on the New Homes Quality Code register of registered developers. "We" refers to the Barratt Developments PLC group brands including Barratt London, Barratt Homes and David Wilson Homes. All images used are for illustrative purposes. These and the dimensions given are illustrative for this house type and individual properties may differ. Please check with your Sales Adviser in respect of individual properties. We give maximum dimensions within each room which includes areas of fixtures and fittings including fitted furniture. These dimensions should not be used for carpet or flooring sizes, appliance spaces or items of furniture. All images, photographs and dimensions are not intended to be relied upon for, nor to form part of, any contract unless specifically incorporated in writing into the contract.



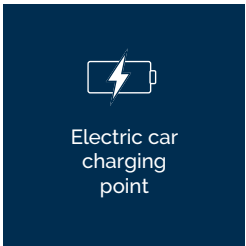
# WINTERTON

## FOUR BEDROOM DETACHED HOME

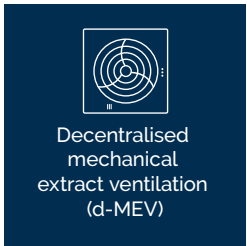
CORE



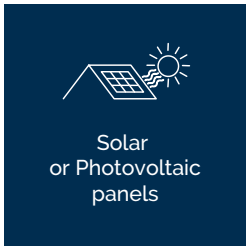
Highly-efficient insulation



Electric car charging point



Decentralised mechanical extract ventilation (d-MEV)



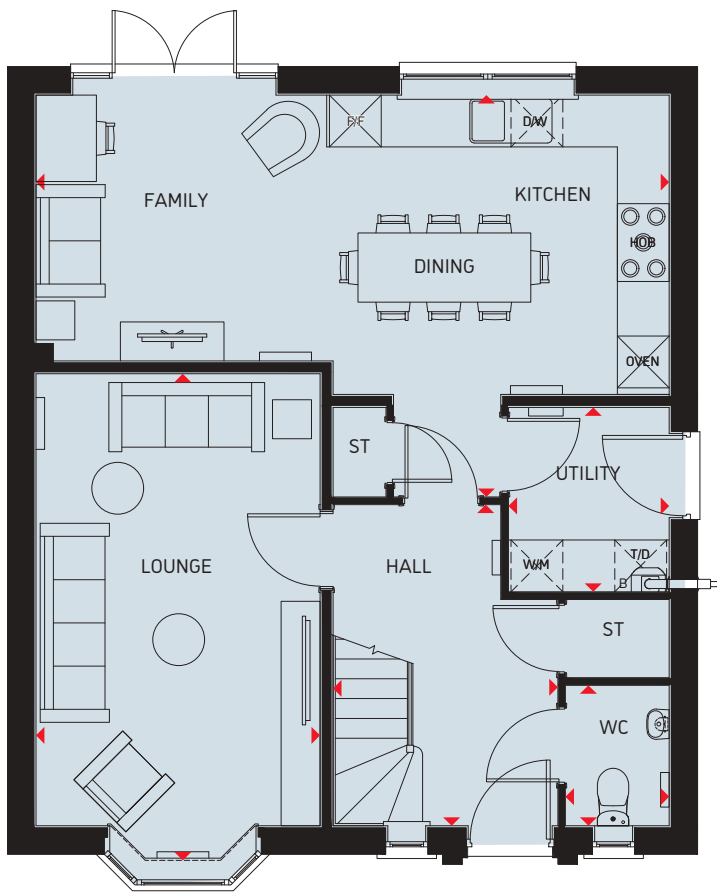
Solar or Photovoltaic panels



Waste Water Heat Recovery Systems

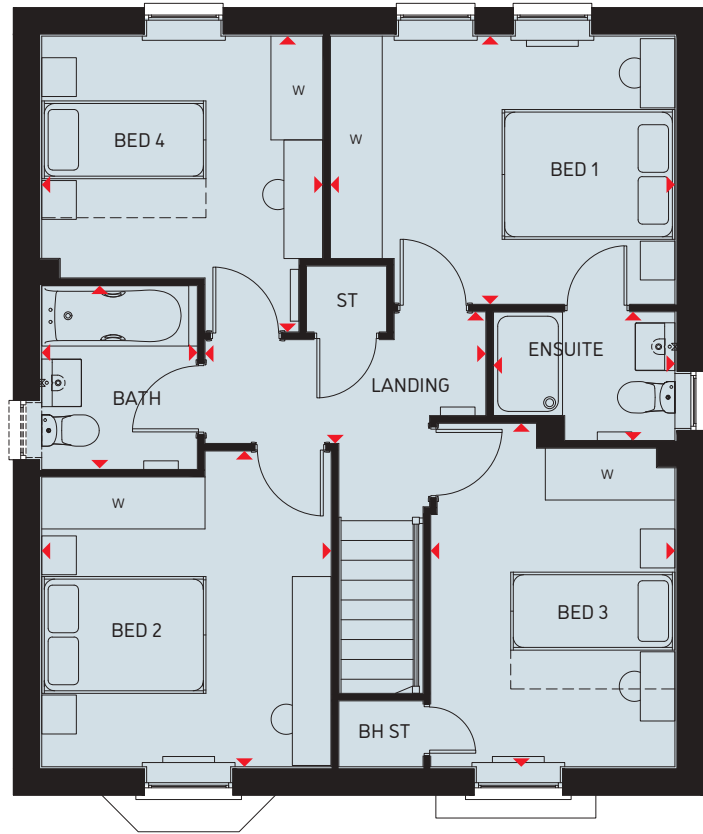


Argon-filled double-glazing



### Ground Floor

Lounge	3285 x 5625 mm	10'9" x 18'5"
Kitchen/Family/Dining	7318 x 4447 mm	24'0" x 15'3"
Utility	1859 x 2133 mm	6'1" x 7'0"
WC	1200 x 1625 mm	3'11" x 5'4"
Hall	2600 x 3713 mm	8'6" x 12'2"



### First Floor

Bedroom 1	3985 x 3100 mm	13'1" x 10'2"
En-suite	1488 x 2100 mm	4'10" x 6'11"
Bedroom 2	3651 x 3347 mm	11'11" x 11'0"
Bedroom 3	3972 x 2825 mm	13'0" x 9'3"
Bedroom 4	3250 x 3421 mm	10'8" x 11'2"
Bathroom	2125 x 1800 mm	7'0" x 5'11"
Landing	3246 x 1521 mm	10'8" x 5'0"

### Key

B	Boiler	BH ST	Bulkhead Store	dw	Dishwasher space	td	Tumble dryer space	W	Wardrobe space
ST	Store	wm	Washing machine space	f/f	Fridge freezer space	WFH	Working from home space	◄►	Dimension location



Scan here for more details



DAVID WILSON HOMES

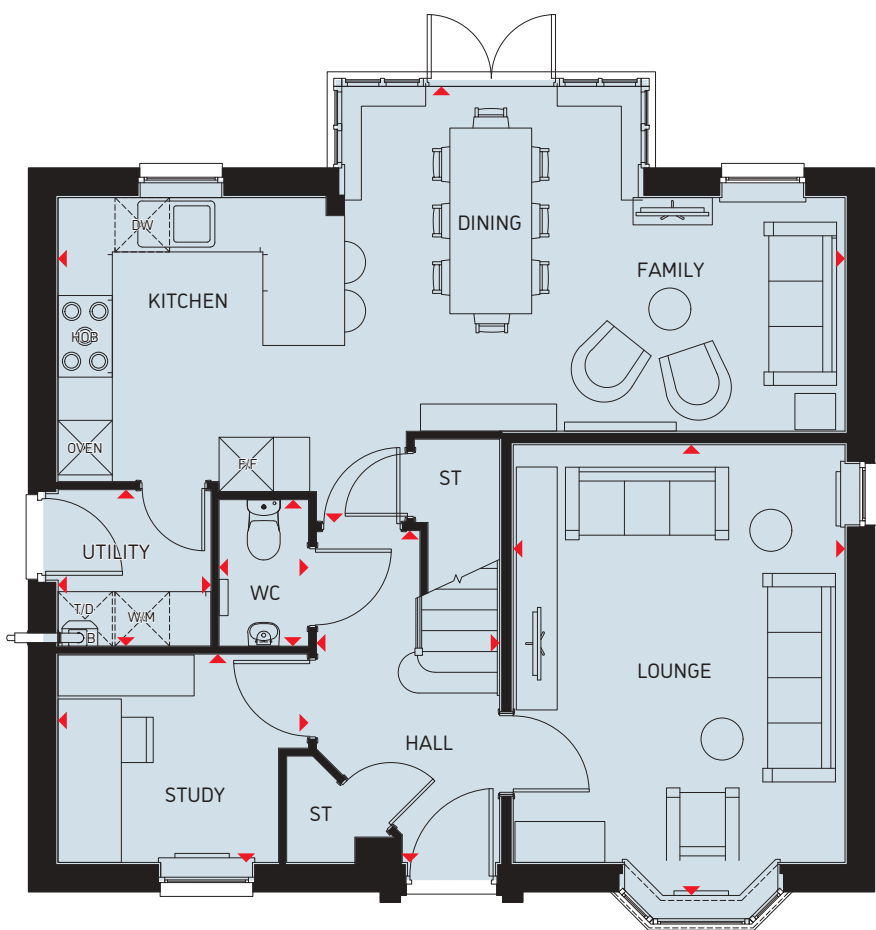
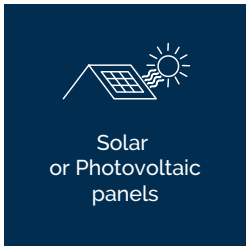
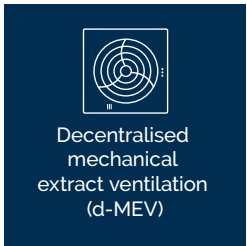
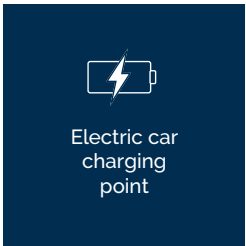
We are on the New Homes Quality Code register of registered developers. "We" refers to the Barratt Developments PLC group brands including Barratt London, Barratt Homes and David Wilson Homes. All images used are for illustrative purposes. These and the dimensions given are illustrative for this house type and individual properties may differ. Please check with your Sales Adviser in respect of individual properties. We give maximum dimensions within each room which includes areas of fixtures and fittings including fitted furniture. These dimensions should not be used for carpet or flooring sizes, appliance spaces or items of furniture. All images, photographs and dimensions are not intended to be relied upon for, nor to form part of, any contract unless specifically incorporated in writing into the contract.



# LYNFORD

## FOUR BEDROOM DETACHED HOME

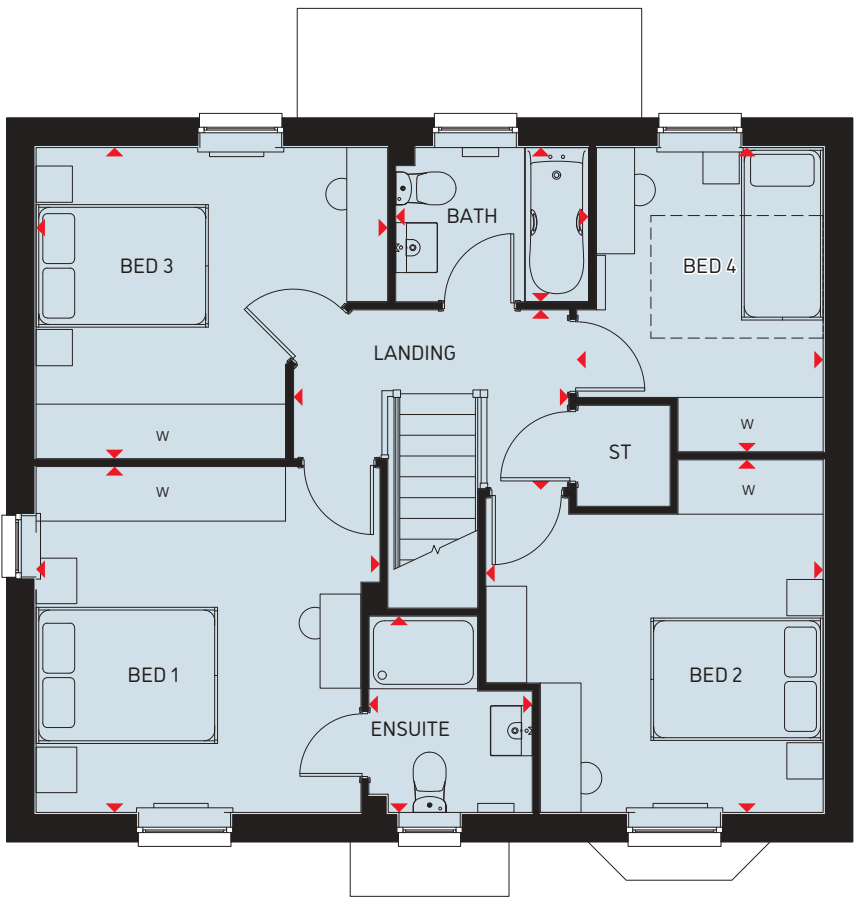
FOCAL



### Ground Floor

Lounge	4994 x 3658 mm	16'5" x 12'0"
Kitchen/Dining/Family	8677 x 4807 mm	28'5" x 15'9"
Study	2763 x 2296 mm	9'1" x 7'6"
Utility	1688 x 1725 mm	5'6" x 5'8"
WC	1614 x 987 mm	5'3" x 3'3"

\* Window may be omitted on certain plots. Speak to a Sales Adviser for details on individual plots.



### First Floor

Bedroom 1	3811 x 3791 mm	12'6" x 12'5"
En Suite	2162 x 1800 mm	7'1" x 5'11"
Bedroom 2	3720 x 3886 mm	12'2" x 12'9"
Bedroom 3	3429 x 3867 mm	11'3" x 12'8"
Bedroom 4	3354 x 2717 mm	11'0" x 8'11"
Bathroom	2125 x 1700 mm	7'0" x 5'7"
Landing	3035 x 1984 mm	9'11" x 6'6"

### Key

B	Boiler	dw	Dishwasher space	wm	Washing machine space	W	Wardrobe space
ST	Store	f/f	Fridge/freezer space	td	Tumble dryer space	◀▶	Dimension location



Scan here for more details



DAVID WILSON HOMES

We are on the New Homes Quality Code register of registered developers. "We" refers to the Barratt Developments PLC group brands including Barratt London, Barratt Homes and David Wilson Homes. All images used are for illustrative purposes. These and the dimensions given are illustrative for this house type and individual properties may differ. Please check with your Sales Adviser in respect of individual properties. We give maximum dimensions within each room which includes areas of fixtures and fittings including fitted furniture. These dimensions should not be used for carpet or flooring sizes, appliance spaces or items of furniture. All images, photographs and dimensions are not intended to be relied upon for, nor to form part of, any contract unless specifically incorporated in writing into the contract.



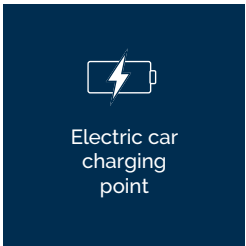
# CULVER

## FOUR BEDROOM DETACHED HOME

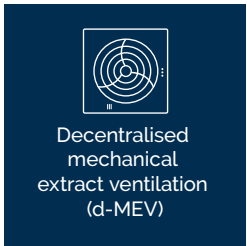
CORE



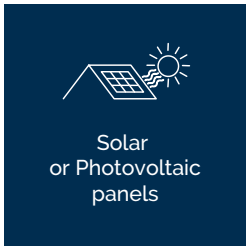
Highly-efficient insulation



Electric car charging point



Decentralised mechanical extract ventilation (d-MEV)



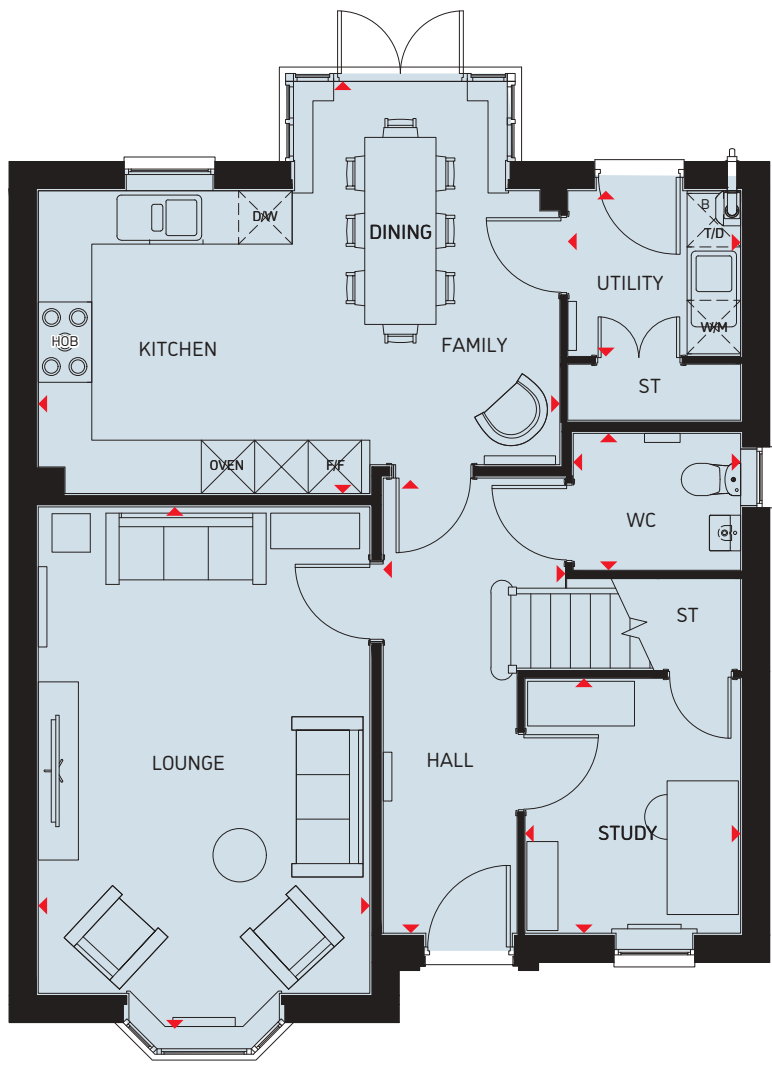
Solar or Photovoltaic panels



Waste Water Heat Recovery Systems

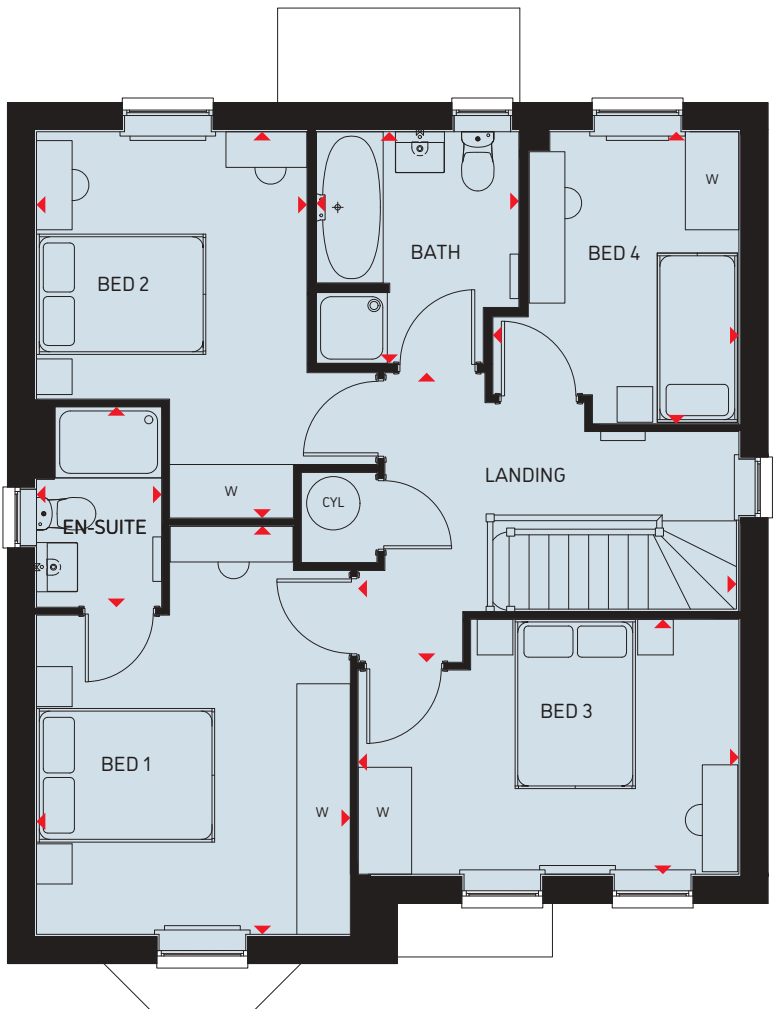


Argon-filled double-glazing



### Ground Floor

Lounge	5757 x 3723 mm	19'2" x 12'3"
Kitchen/Dining	5857 x 4628 mm	19'2" x 15'2"
Study	2861 x 2421 mm	9'4" x 7'11"
Utility	1860 x 1940 mm	6'1" x 6'4"
WC	1878 x 1534 mm	6'2" x 5'0"
Hall	5110 x 2047 mm	16'9" x 6'8"



### First Floor

Bedroom 1	4538 x 3528 mm	15'0" x 11'6"
En Suite	2250 x 1406 mm	7'4" x 4'7"
Bedroom 2	4336 x 3036 mm	14'2" x 9'11"
Bedroom 3	4275 x 2861 mm	14'0" x 9'4"
Bedroom 4	3278 x 2763 mm	10'9" x 9'1"
Bathroom	2596 x 2275 mm	8'6" x 7'5"
Landing	4274 x 3250 mm	14'0" x 10'8"

### Key

B	Boiler	wm	Washing machine space	dw	Dishwasher space	W	Wardrobe space
ST	Store	f/f	Fridge/freezer space	WFH	Working from home space	◀▶	Dimension location



Scan here for more details



DAVID WILSON HOMES

We are on the New Homes Quality Code register of registered developers. "We" refers to the Barratt Developments PLC group brands including Barratt London, Barratt Homes and David Wilson Homes. All images used are for illustrative purposes. These and the dimensions given are illustrative for this house type and individual properties may differ. Please check with your Sales Adviser in respect of individual properties. We give maximum dimensions within each room which includes areas of fixtures and fittings including fitted furniture. These dimensions should not be used for carpet or flooring sizes, appliance spaces or items of furniture. All images, photographs and dimensions are not intended to be relied upon for, nor to form part of, any contract unless specifically incorporated in writing into the contract.



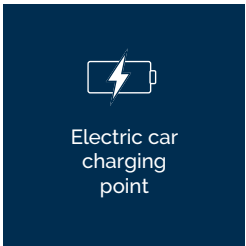
# WYCHWOOD

## FOUR BEDROOM DETACHED HOME

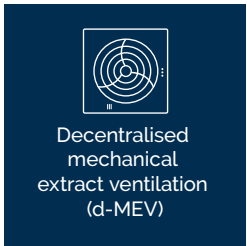
FOCAL



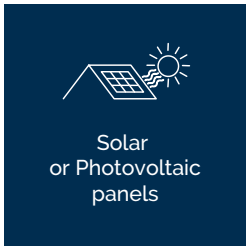
Highly-efficient insulation



Electric car charging point



Decentralised mechanical extract ventilation (d-MEV)



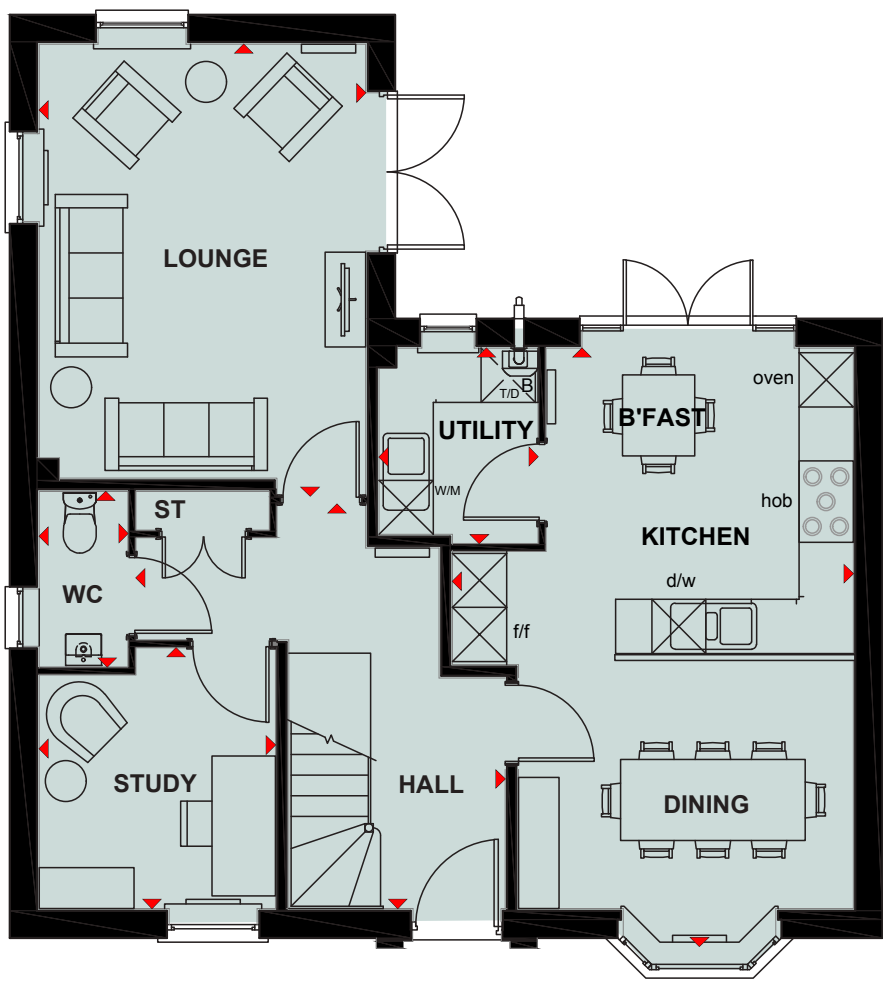
Solar or Photovoltaic panels



Waste Water Heat Recovery Systems

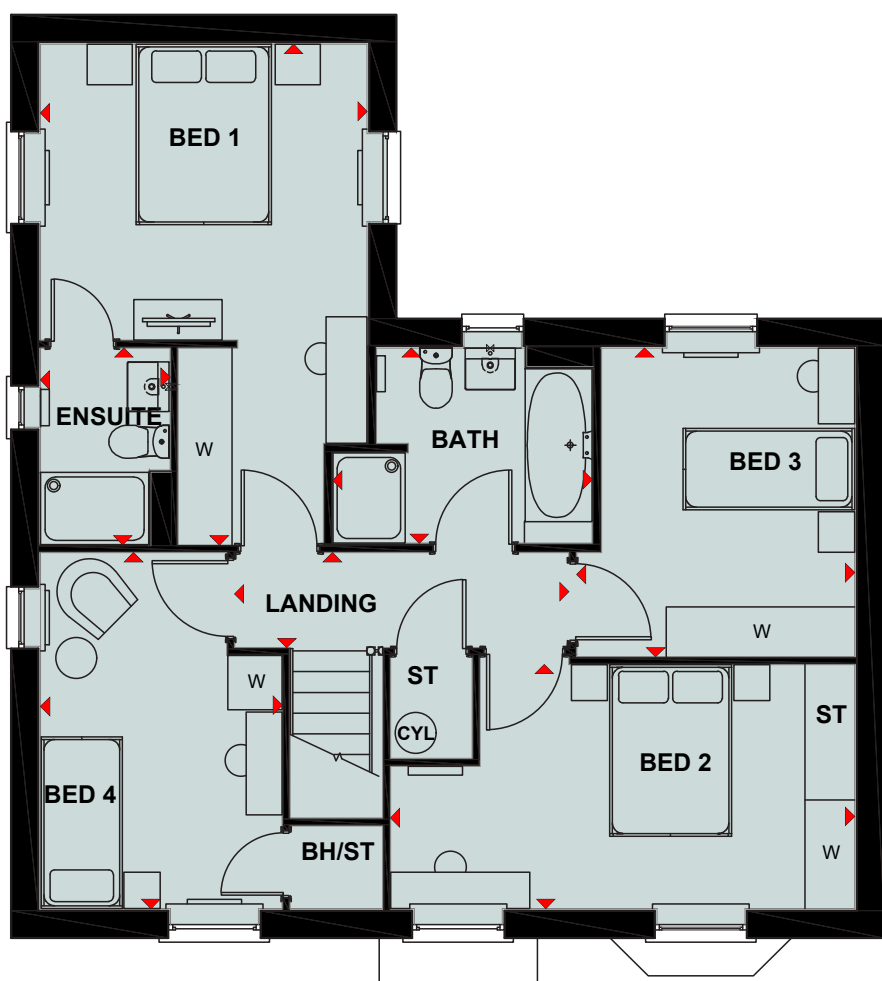


Argon-filled double-glazing



### Ground Floor

Lounge	5003 x 3615 mm	16'5" x 11'10"
Kitchen/B'fast/Dining	6635 x 4438 mm	21'8" x 14'6"
Utility	2164 x 1760 mm	7'1" x 5'9"
Study	2885 x 2615 mm	9'5" x 8'7"
WC	1942 x 982 mm	6'4" x 3'3"
Hall	4479 x 4089 mm	14'8" x 13'5"



### First Floor

Bed 1	5540 x 3615 mm	18'2" x 11'10"
Ensuite	2177 x 1435 mm	7'2" x 4'8"
Bed 2	5137 x 2700 mm	16'10" x 8'10"
Bed 3	3077 x 3416 mm	10'1" x 11'2"
Bed 4	3938 x 2674 mm	12'11" x 8'9"
Bath	2872 x 2160 mm	9'5" x 7'1"
Landing	3699 x 1050 mm	12'1" x 3'5"

### Key

B	Boiler	wm	Washing machine space	dw	Dishwasher space	W	Wardrobe space
ST	Store	f/f	Fridge/freezer space	WFH	Working from home space	◀▶	Dimension location



Scan here for more details



DAVID WILSON HOMES

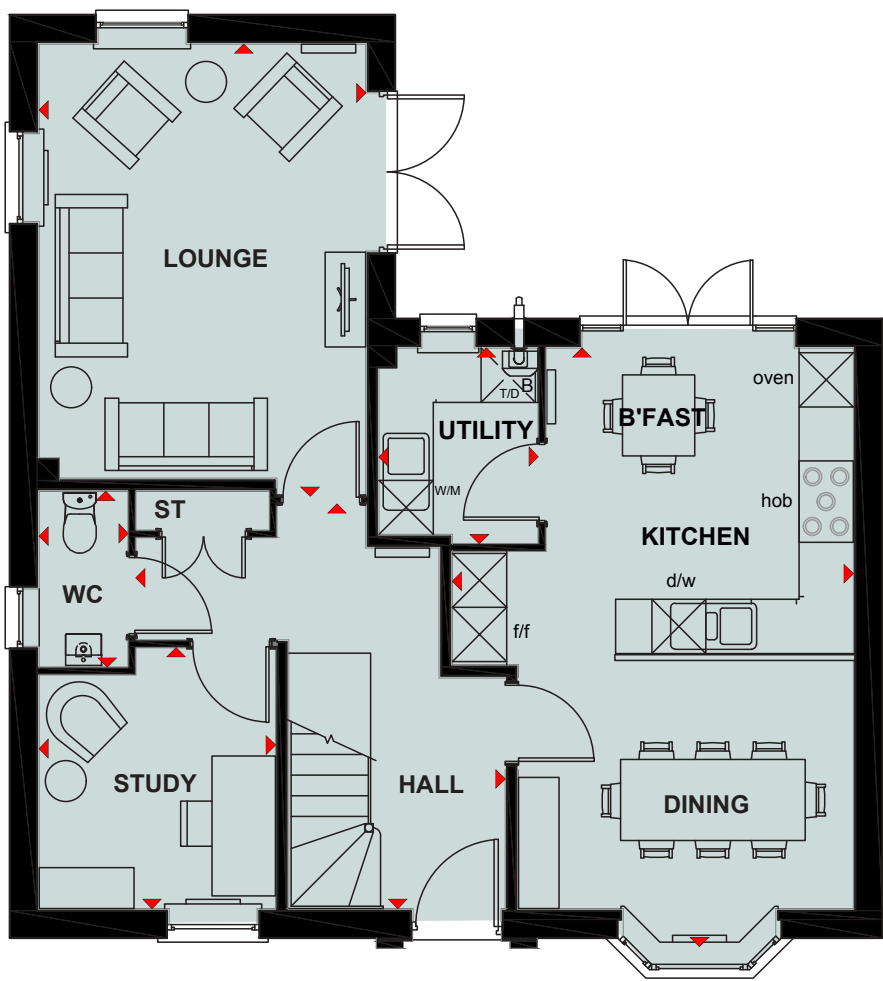
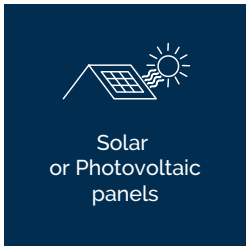
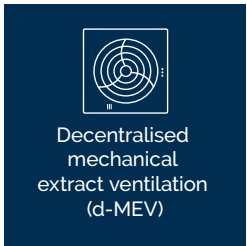
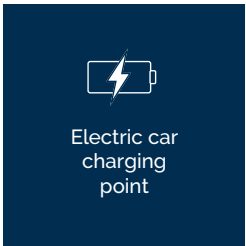
We are on the New Homes Quality Code register of registered developers. "We" refers to the Barratt Developments PLC group brands including Barratt London, Barratt Homes and David Wilson Homes. All images used are for illustrative purposes. These and the dimensions given are illustrative for this house type and individual properties may differ. Please check with your Sales Adviser in respect of individual properties. We give maximum dimensions within each room which includes areas of fixtures and fittings including fitted furniture. These dimensions should not be used for carpet or flooring sizes, appliance spaces or items of furniture. All images, photographs and dimensions are not intended to be relied upon for, nor to form part of, any contract unless specifically incorporated in writing into the contract.



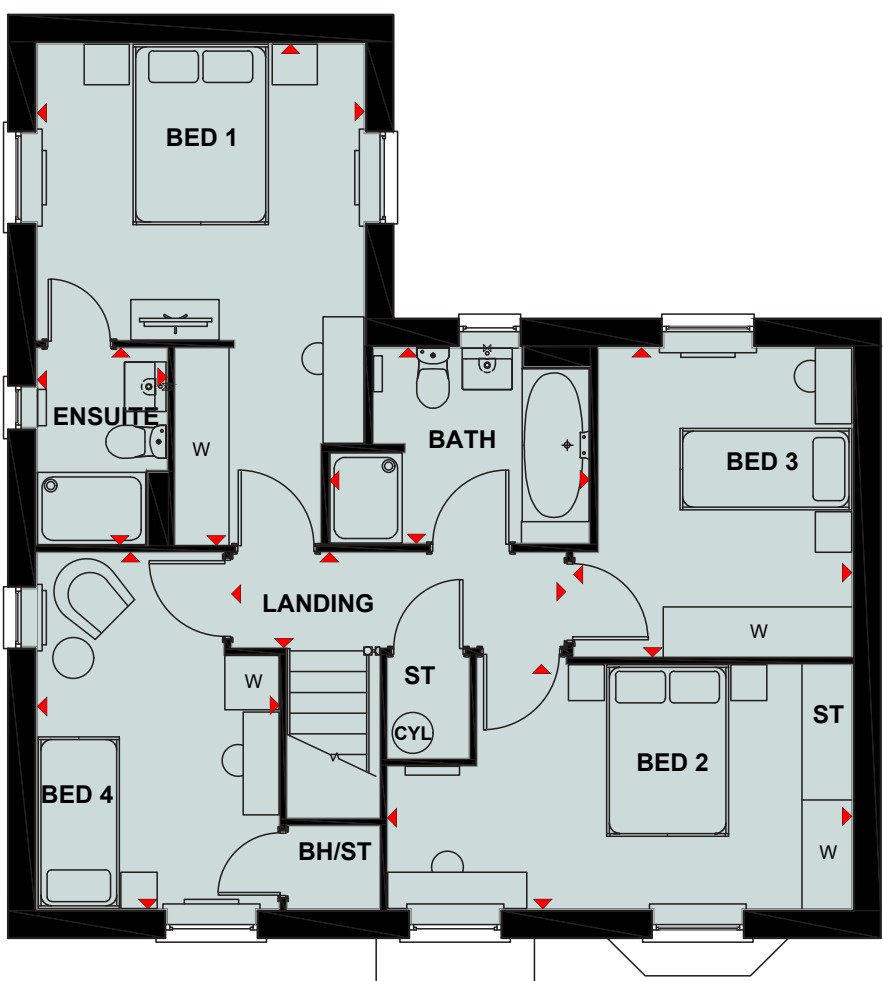
# WYCHWOOD

## FOUR BEDROOM DETACHED HOME

CORE



Ground Floor		
Lounge	5003 x 3615 mm	16'5" x 11'10"
Kitchen/B'fast/Dining	6635 x 4438 mm	21'8" x 14'6"
Utility	2164 x 1760 mm	7'1" x 5'9"
Study	2885 x 2615 mm	9'5" x 8'7"
WC	1942 x 982 mm	6'4" x 3'3"
Hall	4479 x 4089 mm	14'8" x 13'5"



First Floor		
Bed 1	5540 x 3615 mm	18'2" x 11'10"
Ensuite	2177 x 1435 mm	7'2" x 4'8"
Bed 2	5137 x 2700 mm	16'10" x 8'10"
Bed 3	3077 x 3416 mm	10'1" x 11'2"
Bed 4	3938 x 2674 mm	12'11" x 8'9"
Bath	2872 x 2160 mm	9'5" x 7'1"
Landing	3699 x 1050 mm	12'1" x 3'5"

### Key

B	Boiler	wm	Washing machine space	dw	Dishwasher space	W	Wardrobe space
ST	Store	f/f	Fridge/freezer space	WFH	Working from home space	◀▶	Dimension location



Scan here for more details



DAVID WILSON HOMES

We are on the New Homes Quality Code register of registered developers. "We" refers to the Barratt Developments PLC group brands including Barratt London, Barratt Homes and David Wilson Homes. All images used are for illustrative purposes. These and the dimensions given are illustrative for this house type and individual properties may differ. Please check with your Sales Adviser in respect of individual properties. We give maximum dimensions within each room which includes areas of fixtures and fittings including fitted furniture. These dimensions should not be used for carpet or flooring sizes, appliance spaces or items of furniture. All images, photographs and dimensions are not intended to be relied upon for, nor to form part of, any contract unless specifically incorporated in writing into the contract.