

THORNBERRY GARDENS

LODGE LANE, DINNINGTON, SHEFFIELD, SOUTH YORKSHIRE, S25 2PB



2, 3 & 4 BEDROOM HOMES



STUNNING HOMES IN A GREAT LOCATION

**WELCOME TO THORNBERRY GARDENS, A
DELIGHTFUL DEVELOPMENT OF 2, 3 AND 4
BEDROOM HOMES**

Thornberry Gardens is a fantastic selection of 2, 3 and 4 bedroom homes in the popular town of Dinnington.

This vibrant new community offers semi-rural living with excellent city connections.

Living here you can enjoy a range of excellent local amenities including shops, cafés and restaurants. Families will also benefit from Ofsted rated 'good' schools nearby. Thornberry Gardens offers excellent motorway links to major towns and cities with the M1 nearby.



LOCAL AREA CONTRIBUTIONS

We will be contributing the following to the local area in Dinnington;

- Sports Provision Contribution - £663,000
- Education Contribution - £313,243
- Sustainable Transport Fund - £76,000
- Playing Pitch Strategy - £30,000
- First Homes Monitoring Fee - £1,077 per First Home



CREATING A SUSTAINABLE COMMUNITY WHERE FAMILIES AND NATURE CAN THRIVE

At Barratt Homes, we do more than simply craft beautiful homes and desirable developments.

We design and build great places that meet the highest standards, and that promote sustainable, healthy and happy living for our customers.

We know we must give our customers confidence that their homes are designed and built to meet the challenges of the future. We do this through creating places where people and nature can thrive.

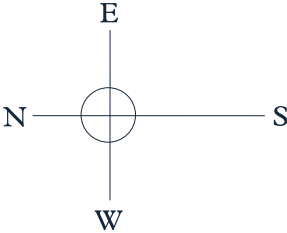


THORNBERRY GARDENS - DINNINGTON

DINNINGTON, LODGE LANE, SHEFFIELD

- Denford**
2 bedroom home
- Maidstone**
3 bedroom home
- Ellerton**
3 bedroom home
- Moresby**
3 bedroom home
- Denby**
3 bedroom home
- Kingsley**
4 bedroom home
- Windermere**
4 bedroom home
- Ripon**
4 bedroom home
- First Home Fund**
- Affordable housing**
- SH** Show Home
- MS** Marketing Suite
- V** Visitors Parking Space
- S/S** Substation
- BCP** Bin Collection Point

- Tree Mounted Bat Box**
- Bat Box**
- Swift Brick**
- Bird Box**
- Hedgehog Highway applies to all gardens. Please ask marketing assistant for further information**



barratthomes.co.uk



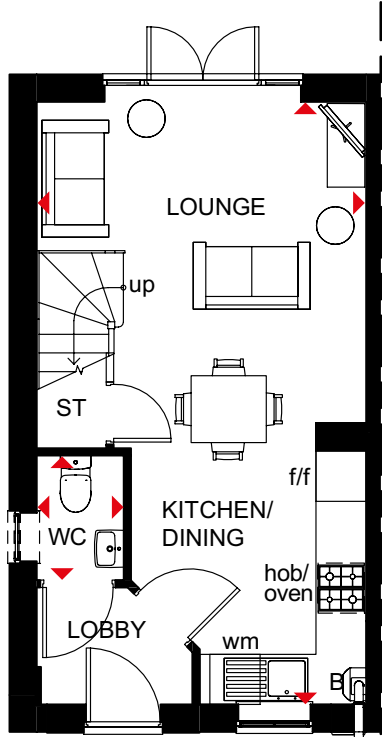
Development layouts and landscaping are not intended to form part of any contract or warranty unless specifically incorporated in writing into the contract. Images and development layouts are for illustrative purposes and should be used for general guidance only. Development layouts including parking arrangements and social/affordable housing may change to reflect changes in planning permission and are not intended to form part of any contract or warranty unless specifically incorporated in writing. Please speak to your solicitor to whom full details of any planning consents including layout plans will be available. The Dinnington is a marketing name only and may not be the designated postal address, which may be determined by The Post Office.

DENFORD

2 BEDROOM HOME



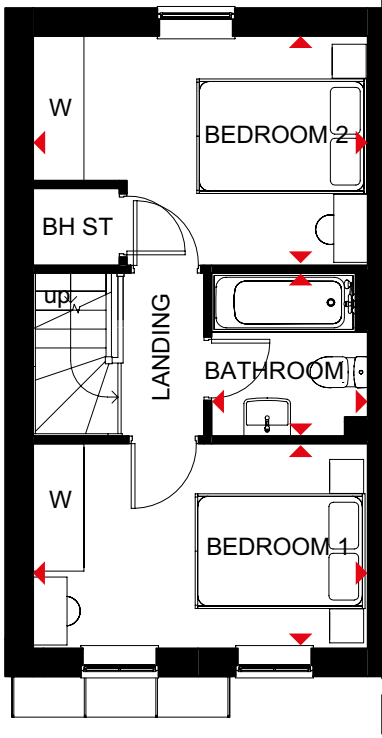
- Free-flowing living space creates a flexible terraced home, ideal for first-timers and downsizers
- French doors lead to the rear garden giving the open-plan lounge, dining area and fitted kitchen a bright and airy feeling
- Upstairs are two double bedrooms and the bathroom



Ground Floor

Kitchen/ Dining/Lounge	3943 x 7210mm	12'11" x 23'8"
WC	1040 x 1490mm	3'5" x 4'11"

(Approximate dimensions)



First Floor

Bedroom 1	3943 x 2412mm	12'11" x 7'11"
Bedroom 2	3943 x 2702mm	12'11" x 8'10"
Bathroom	1840 x 1920mm	6'0" x 6'4"

(Approximate dimensions)

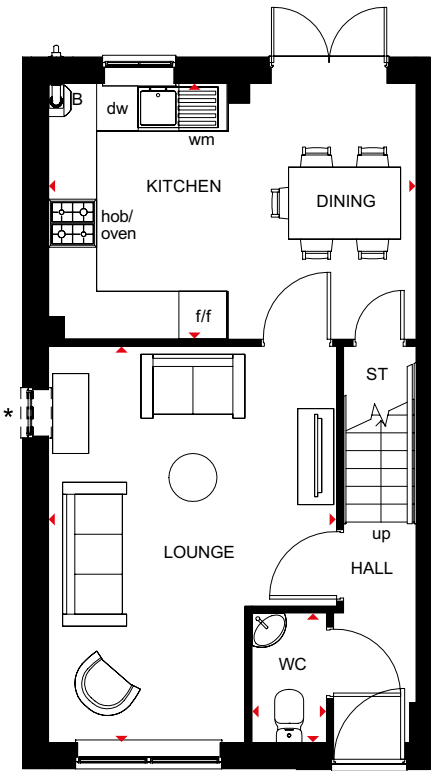
KEY	B	Boiler	f/f	Fridge/freezer space
	BH ST	Bulkhead store	W	Wardrobe space
	wm	Washing machine space	◀▶	Dimension location

MAIDSTONE

3 BEDROOM TERRACED HOME



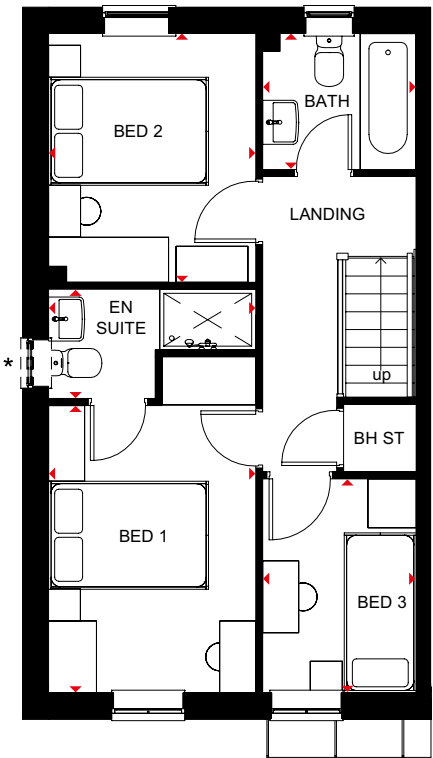
- An ideal family home designed with plenty of space for modern living
- The ground floor comprises a good-sized lounge and an open-plan kitchen with dining area and French doors leading to the garden
- The first floor has two double bedrooms – the generous main with en suite – a single bedroom and family bathroom



Ground Floor

Lounge	4955 x 3604mm	16'3" x 11'10"
Kitchen/Dining	3202 x 4598mm	10'6" x 15'1"
WC	932 x 1620mm	3'1" x 5'4"

(Approximate dimensions)
*Optional window



First Floor

Bedroom 1	4204 x 2592mm	13'10" x 8'6"
En Suite	1365 x 2592mm	4'6" x 8'6"
Bedroom 2	3112 x 2592mm	10'3" x 8'6"
Bedroom 3	1918 x 2676mm	6'4" x 8'9"
Bathroom	1918 x 1702mm	6'4" x 5'7"

(Approximate dimensions)
*Optional window

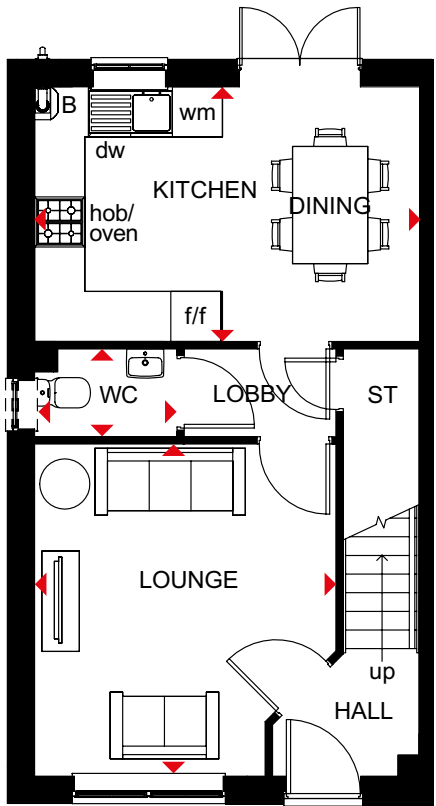
KEY	B	Boiler	f/f	Fridge/freezer space
	ST	Store	dw	Dishwasher space
	wm	Washing machine space	◀▶	Dimension location

ELLERTON

3 BEDROOM TERRACED HOME



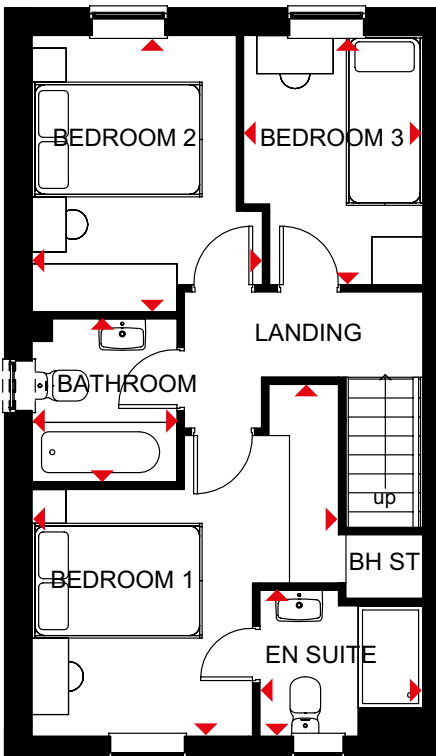
- Bright, practical home, ideal for modern family living
- Large, open-plan kitchen with ample dining space has French doors leading to the rear garden
- Good-sized lounge for all the family to relax in
- Upstairs the main bedroom has an en suite shower room, and there is a further double bedroom, a single bedroom and a family bathroom



Ground Floor

Lounge	3605 x 3972mm	11'10" x 13'0"
Kitchen/Dining	4598 x 3048mm	15'1" x 10'0"
WC	1703 x 1050mm	5'7" x 3'5"

(Approximate dimensions)



First Floor

Bedroom 1	3605 x 4138mm	11'10" x 13'7"
En Suite	1918 x 1716mm	6'4" x 5'8"
Bedroom 2	2708 x 3250mm	8'11" x 10'8"
Bedroom 3	2109 x 2932mm	6'11" x 9'7"
Bathroom	1703 x 1917mm	5'7" x 6'3"

(Approximate dimensions)

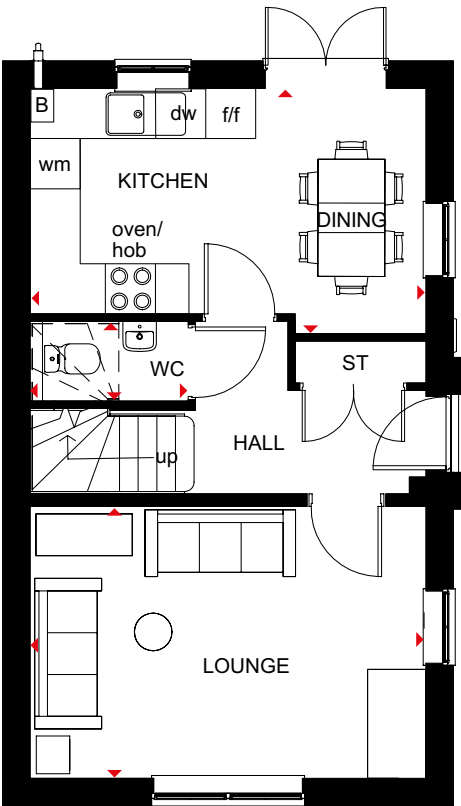
KEY	B	Boiler	f/f	Fridge/freezer space
	ST	Store	dw	Dishwasher space
	wm	Washing machine space	◀▶	Dimension location

MORESBY

3 BEDROOM DETACHED HOME



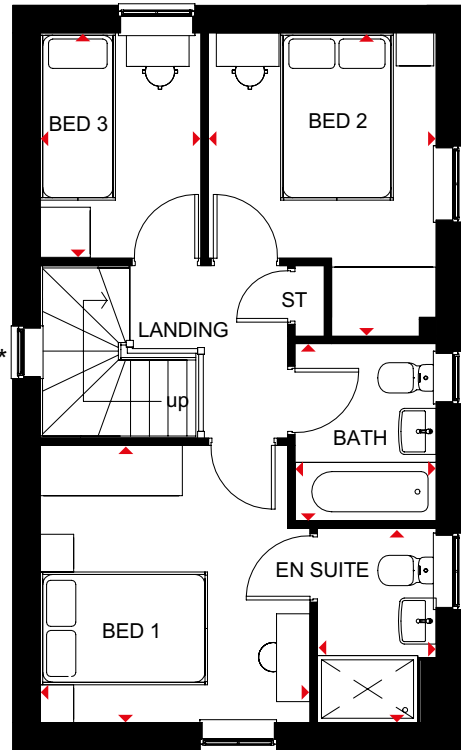
- A bright family home full of light and plenty of space
- The ground floor has a dual-aspect lounge and an open-plan kitchen with dining area opening onto the garden
- On the first floor there are two double bedrooms, the main with en suite, a single bedroom and family bathroom



Ground Floor

Lounge	4735 x 3250mm	15'6" x 10'8"
Kitchen/Dining	4735 x 2933mm	15'6" x 9'7"
WC	1891 x 945mm	6'2" x 3'1"

(Approximate dimensions)



First Floor

Bedroom 1	3226 x 3312mm	10'7" x 10'10"
En Suite	2322 x 1421mm	7'7" x 4'8"
Bedroom 2	2679 x 3628mm	8'9" x 11'11"
Bedroom 3	2696 x 1968mm	8'10" x 6'5"
Bathroom	2120 x 1688mm	6'11" x 5'6"

(Approximate dimensions)

* Window may be omitted on certain plots. Speak to a Sales Adviser for details on individual plots.

- KEY**
- B Boiler
 - ST Store
 - wm Washing machine space

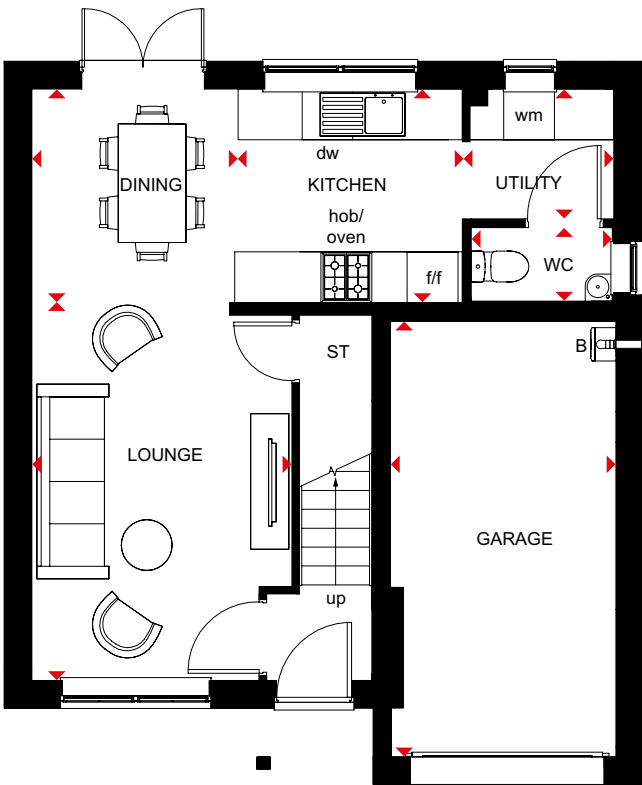
- f/f Fridge/freezer space
- dw Dishwasher space
- ◀▶ Dimension location

DENBY

3 BEDROOM DETACHED HOME



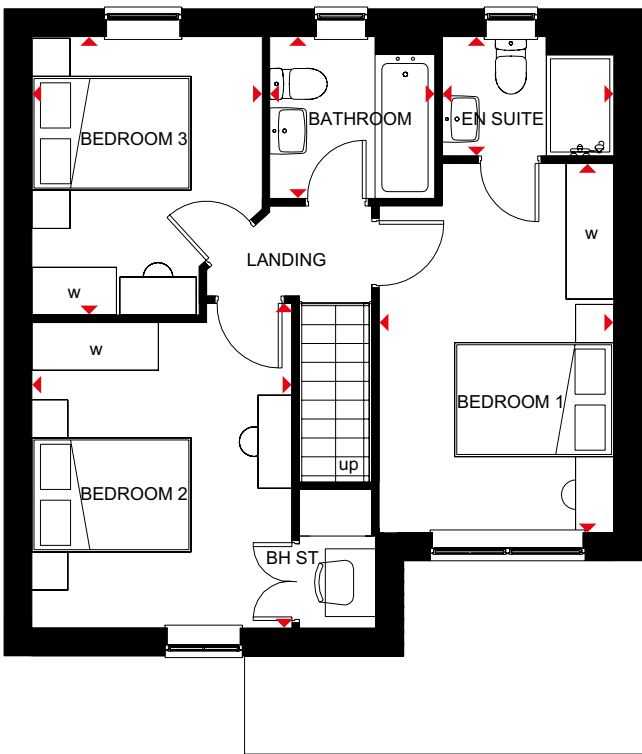
- Free-flowing living space creates a flexible family home
- Large windows and French doors to the rear garden give the open-plan lounge, dining area, kitchen and utility a bright and airy feeling
- Integral garage adds convenience and security
- Upstairs are three double bedrooms – the main bedroom with en suite – and the family bathroom



Ground Floor

Lounge	3072 x 4462mm	10'1" x 14'8"
Kitchen	2688 x 2523mm	8'10" x 8'3"
Dining	2397 x 2523mm	7'10" x 8'3"
Utility	1789 x 1533mm	5'10" x 5'0"
WC	1701 x 903mm	5'7" x 3'0"
Garage	2663 x 5142mm	8'9" x 16'10"

(Approximate dimensions)



First Floor

Bedroom 1	2770 x 4361mm	9'1" x 14'4"
En Suite	2026 x 1412mm	6'8" x 4'8"
Bedroom 2	3072 x 3834mm	10'1" x 12'7"
Bedroom 3	2722 x 3289mm	8'11" x 10'9"
Bathroom	1950 x 1913mm	6'5" x 6'3"

(Approximate dimensions)

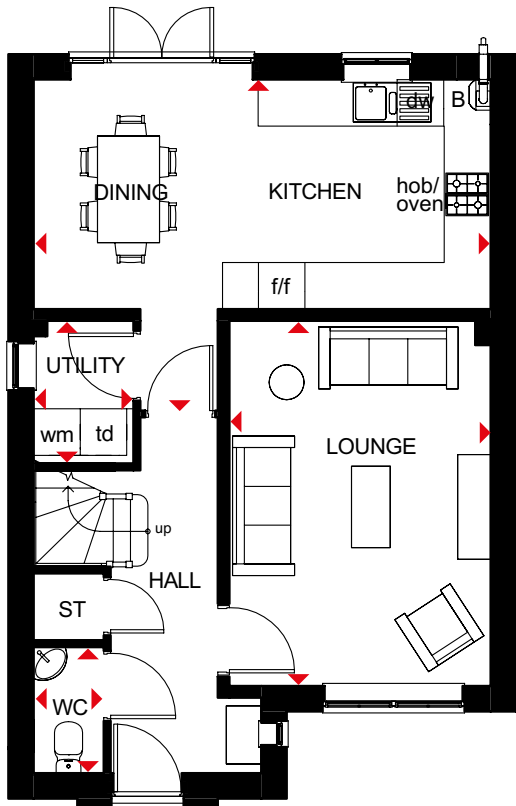
KEY	B	Boiler	wm	Washing machine space	w	Wardrobe space
	ST	Store	f/f	Fridge/freezer space	◀▶	Dimension location
	BH ST	Bulkhead store	dw	Dishwasher space		

KINGSLEY

4 BEDROOM DETACHED HOME



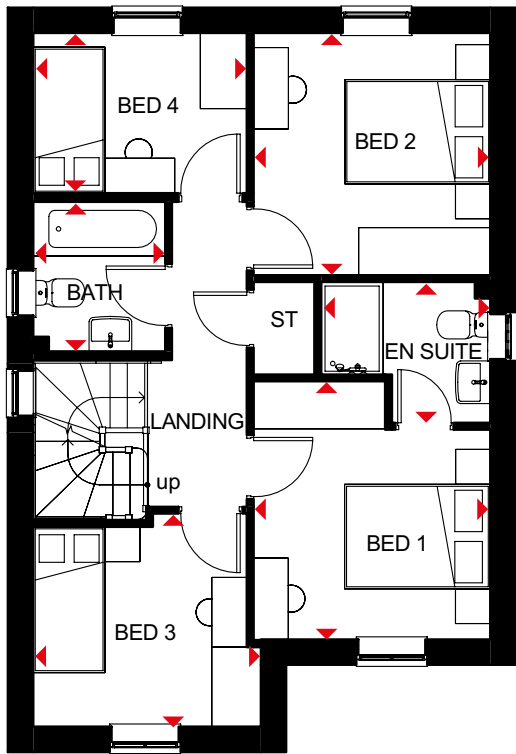
- Bright, airy family home with oversized windows to maximise light
- The large open-plan kitchen has a dining area with French doors leading to the garden; there is also a separate utility room
- The spacious lounge is a great place for the family to relax in
- Upstairs are two double bedrooms, the main with en suite, two single bedrooms and a family bathroom



Ground Floor

Lounge	3370 x 4710mm	11'1" x 15'5"
Kitchen/Dining	5895 x 4268mm	19'4" x 14'0"
WC	904 x 1627mm	3'0" x 5'4"
Utility	1287 x 1841mm	4'3" x 6'0"

(Approximate dimensions)



First Floor

Bedroom 1	3054 x 3328mm	10'0" x 10'11"
En Suite	2181 x 1816mm	7'2" x 5'11"
Bedroom 2	3054 x 3123mm	10'0" x 10'3"
Bedroom 3	2935 x 2747mm	9'8" x 9'0"
Bedroom 4	2754 x 2065mm	9'0" x 6'9"
Bathroom	1700 x 1937mm	5'7" x 6'4"

(Approximate dimensions)

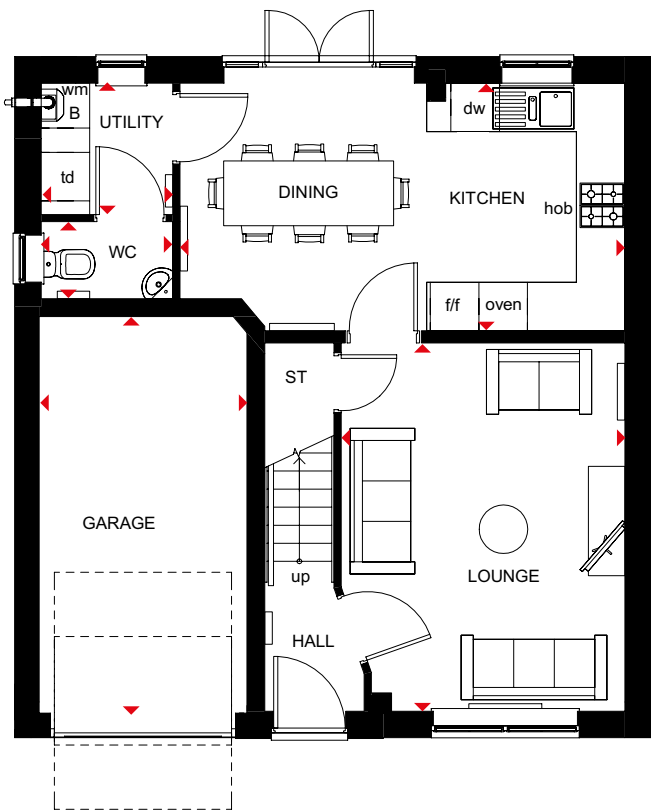
KEY		B	Boiler	f/f	Fridge/freezer space	◀▶	Dimension location
	ST	Store		dw	Dishwasher space		
	wm	Washing machine space		td	Tumble dryer space		

WINDERMERE

4 BEDROOM DETACHED HOME



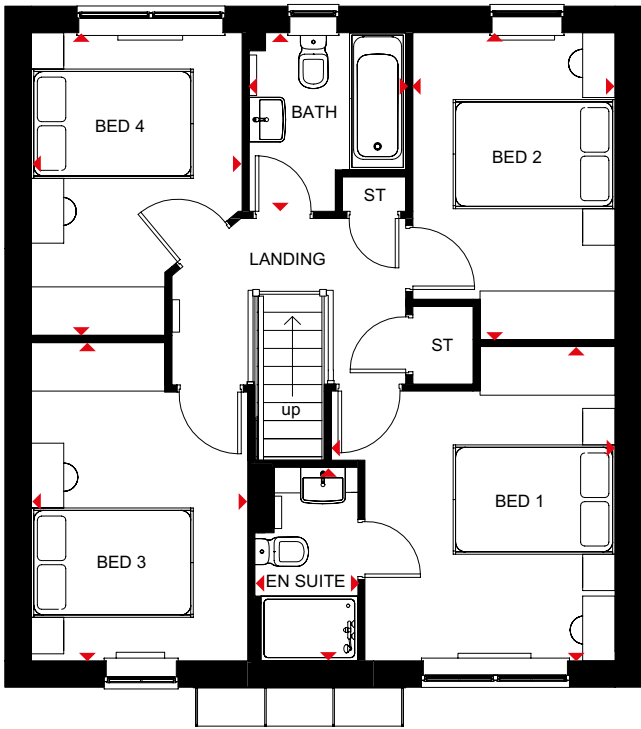
- Light flows into this bright, airy family home through oversized windows, giving a feeling of spaciousness
- The large open-plan kitchen is ideal for modern living with a dining area that has French doors leading to the garden, and a separate utility room
- A spacious lounge is the perfect place for all the family to relax in
- Upstairs are four double bedrooms, the main with en suite, and a family bathroom



Ground Floor

Lounge	3506 x 4548mm	11'6" x 14'11"
Kitchen/Dining	5497 x 3060mm	18'0" x 10'0"
Utility	1627 x 1623mm	5'4" x 5'4"
WC	1627 x 952mm	5'4" x 3'1"
Garage	2568 x 4900mm	8'5" x 16'1"

(Approximate dimensions)



First Floor

Bedroom 1	3506 x 3881mm	11'6" x 12'9"
En Suite	1272 x 2390mm	4'2" x 7'10"
Bedroom 2	2498 x 3791mm	8'2" x 12'5"
Bedroom 3	2675 x 3931mm	8'9" x 12'11"
Bedroom 4	2604 x 3739mm	8'7" x 12'3"
Bathroom	1934 x 2208mm	6'4" x 7'3"

(Approximate dimensions)

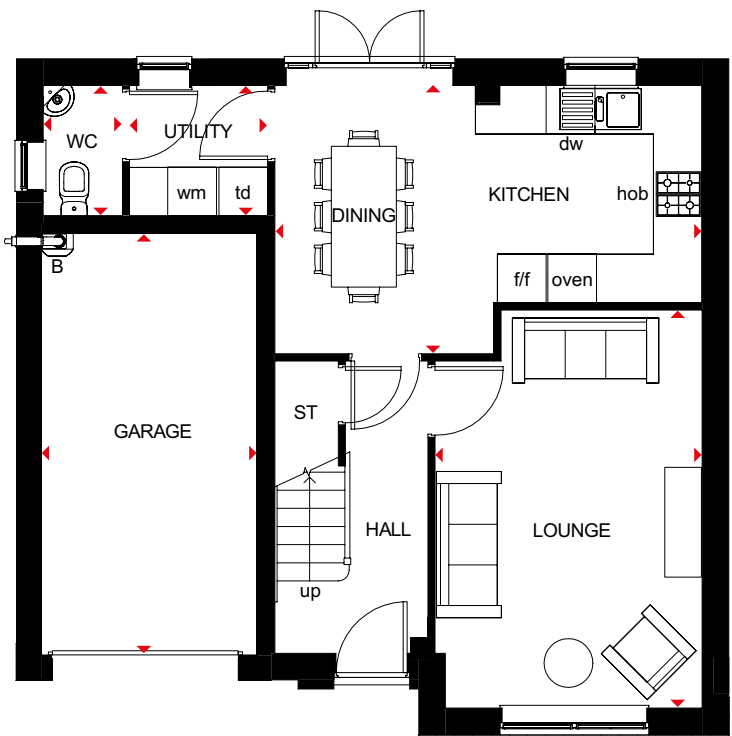
KEY	B	Boiler	f/f	Fridge/freezer space	◀ ▶	Dimension location
	ST	Store	dw	Dishwasher space		
	wm	Washing machine space	td	Tumble dryer space		

RIPON

4 BEDROOM DETACHED HOME



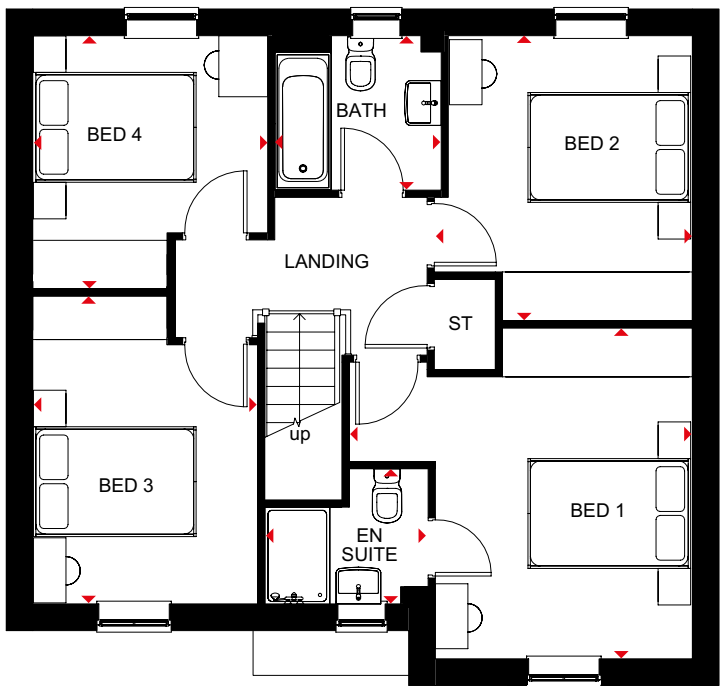
- Bright and spacious four bedroom family home with oversized windows allowing light to flow through
- As well as a generous lounge, the open-plan kitchen with dining area provides room for all the family to enjoy. There is also a separate utility
- Upstairs are three double bedrooms, main with en suite, a single bedroom and family bathroom



Ground Floor

Lounge	4898 x 3287mm	16'1" x 10'9"
Kitchen/Dining	5259 x 3151mm	17'3" x 10'4"
Utility	1700 x 1602mm	5'7" x 5'3"
WC	976 x 1602mm	3'2" x 5'3"
Garage	5189 x 2657mm	17'0" x 8'9"

(Approximate dimensions)



First Floor

Bedroom 1	4196 x 4068mm	13'9" x 13'4"
En Suite	2011 x 1661mm	6'7" x 5'5"
Bedroom 2	3174 x 3504mm	10'5" x 11'6"
Bedroom 3	2764 x 3774mm	9'1" x 12'5"
Bedroom 4	2888 x 3123mm	9'6" x 10'3"
Bathroom	2046 x 1899mm	6'9" x 6'3"

(Approximate dimensions)

KEY	B	Boiler	f/f	Fridge/freezer space	◀ ▶	Dimension location
	ST	Store	dw	Dishwasher space		
	wm	Washing machine space	td	Tumble dryer space		

NEW HOMES QUALITY CODE

Housebuilders and developers who build new homes will be expected to register with the New Homes Quality Board (NHQB). As long as a housebuilder or developer has followed the correct registration process, including completing the necessary training, introducing a complaints procedure, and following other processes and procedures that are needed to meet the requirements of this New Homes Quality Code (the code), they will become a registered developer.

Registered developers agree to follow the code and the New Homes Ombudsman Service, including accepting the decisions of the New Homes Ombudsman in relation to dealings with customers. If a registered developer does not meet the required standards, or fails to accept and act in line with the decisions of the New Homes Ombudsman, they may have action taken against them, including being removed from the register of registered developers.

The code sets out the requirements that registered developers must meet. The code may be updated from time to time to reflect changes to industry best practice as well as the decisions of the New Homes Ombudsman Service.

All homes built by registered developers must meet building-safety and other regulations. All registered developers should aim to make sure there are no snags or defects in their properties before the keys are handed over to a customer. If there are any snags or defects, these should be put right within the agreed timescales.

WHAT THE CODE COVERS

For the purposes of this code, 'customer' means a person who is buying or intends to buy a new home which they will live in or give to another person. (If a new home is being bought in joint names, 'the customer' includes all the joint customers.) However, the New Homes Quality Board have also started work to consider other groups of customers and what they should be able to expect from a new home. This includes shared owners and people who are buying a new home to let to other people. Any changes the New Homes Quality Board make to the code to reflect the needs of other groups of customers will be developed through consultation, and they will continually assess and review the effectiveness of the code, and any new laws or regulations that apply. Other areas which are not covered by the code are claims for loss of property value or blight (where a property falls in value or becomes difficult to sell because of major public work in the area), personal injury or claims that are not covered by the scheme rules of the New Homes Ombudsman Service.



barratthomes.co.uk
0333 355 8468



Calls to 03 numbers are charged at the same rate as dialling an 01 or 02 number. If your fixed line or mobile service has inclusive minutes to 01/02 numbers, then calls to 03 are counted as part of this inclusive call volume. Non-BT customers and mobile phone users should contact their service providers for information about the cost of calls.