



Clockmakers

— WHITCHURCH —

DAVID WILSON HOMES

WHERE QUALITY LIVES



- | | |
|---|------------------|
|  | Football pitches |
|  | Parkland area |
|  | Cricket pitch |
|  | Mown grass path |
|  | Existing trees |
|  | Balancing pond |
|  | Railway |
|  | Swale |
|  | Pond |



Bat box

Positioning of our sustainability features are subject to change. Speak to a Sales Adviser for more information.



DAVID WILSON HOMES
WHERE QUALITY LIVES

CLOCKMAKERS AMENITIES



LOCAL AMENITIES

EARLY YEARS

Tilstock CoFe Primary & Nursery

Tilstock Lane, Tilstock, Whitchurch
SY13 3JL

Whitchurch CE Infant & Nursery Academy School

Station Road, Whitchurch
SY13 1RJ

SCHOOLS

Whitchurch C of E Junior School

Salisbury Road, Whitchurch
SY13 1RX

Tushingham With Grindley CoFe Primary School

Tushingham, Whitchurch
SY13 4QS

Sir John Talbot's School

Prees Road, Whitchurch
SY13 2BY

North Shropshire College

Oswestry Campus, Shrewsbury Road, Oswestry
SY11 4QB

DOCTORS & DENTIST

Bridgewater Family Medical Practice

Drumcarrig, Bridgewater Street, Whitchurch
SY13 1QH

Green End Dental Practice

43 Green End, Whitchurch
SY13 1AD

OPTICIANS

Specsavers Opticians & Audiologists

Brownlow Street, Whitchurch
SY13 1QW

Scrivens Opticians

33 Green End, Whitchurch
SY13 1AD

HOSPITALS

Whitchurch Community Hospital

Claypit Street, Whitchurch
SY13 1NT

Royal Shrewsbury Hospital

Mytton Oak Road, Shrewsbury
SY3 8XQ

VETS

Leonard Brothers Veterinary Centre

Station Road Whitchurch
SY13 1RE

POST OFFICE

Whitchurch Post Office

11 Green End, Whitchurch
SY13 1AD

LEISURE

Whitchurch Leisure Centre

Sir John Talbot's School, Prees Rd, Whitchurch
SY13 2BY

SUPERMARKETS

Tesco Superstore

White Lion Meadow, Whitchurch
SY13 1BA

Sainsburys

London Rd, Whitchurch
SY13 1NJ

ALDI

Wrexham Rd, Whitchurch
SY13 1JG

PLACES TO EAT

Docket No.33

33 High St, Whitchurch SY13 1AZ

Etzio

58-60 High St, Whitchurch SY13 1BB

The Black Bear - 17th century pub

49 High Street, Whitchurch SY13 1AZ

Walkers Bakery & Tea Rooms

21 High St, Whitchurch SY13 1AX

Wild Shropshire - Michelin Star

25 Green End, Whitchurch SY13 1AD

TRANSPORT

Whitchurch Train Station

Station Road, Whitchurch
SY13 1RL

A2B Taxis - 07859 042 690

S&M Cars - 07908 778 564

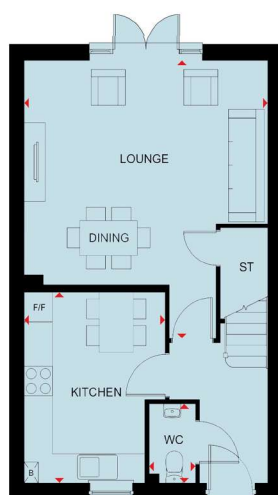
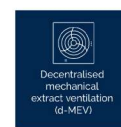


DAVID WILSON HOMES

WHERE QUALITY LIVES

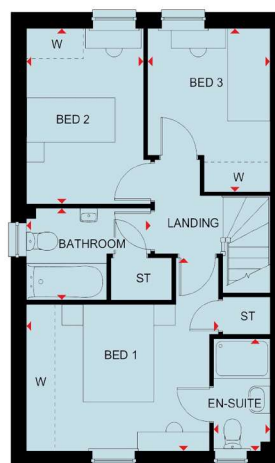
THE ALDER

THREE BEDROOM HOME



Ground Floor

Lounge/Dining	5163 x 4542 mm	16'11" x 14'11"
Kitchen	2988 x 3868 mm	9'10" x 12'8"
WC	985 x 1612 mm	3'3" x 5'3"



First Floor

Bedroom 1	4069 x 2975 mm	13'4" x 9'9"
En suite	1200 x 2281 mm	3'11" x 7'6"
Bedroom 2	2480 x 3568 mm	8'2" x 11'8"
Bedroom 3	2595 x 3302 mm	8'6" x 10'10"
Bathroom	2630 x 1853 mm	8'8" x 6'1"

Key

B	Boiler	wm	Washing machine space	↔	Dimension location
ST	Store	f/f	Fridge/freezer space		



Scan here for more details

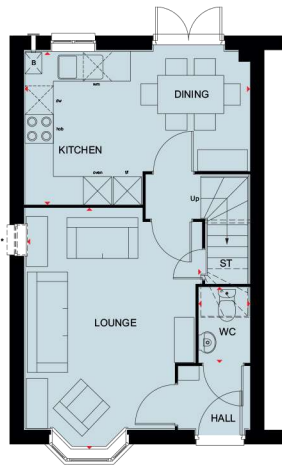


DAVID WILSON HOMES

We are on the New Homes Quality Code register of registered developers. "We" refers to the Barratt Developments PLC group brands including Barratt London, Barratt Homes and David Wilson Homes. All images used are for illustrative purposes. The images and the dimensions given are illustrative for this house type and individual properties may differ. Please check with your Sales Adviser in respect of individual properties. We give maximum dimensions within each room which includes areas of fixtures and fittings including fitted furniture. These dimensions should not be used for carpet or flooring sizes, appliance spaces or items of furniture. All images, photographs, dimensions and energy efficiency features depicted are not intended to be relied upon for, nor to form part of, any contract unless specifically incorporated in writing into the contract.

KENNETT

THREE BEDROOM HOME



Ground Floor

Lounge	4994 x 3727 mm	16'5" x 12'3"
Kitchen/Dining	4726 x 3195 mm	15'6" x 10'6"
WC	1562 x 1038 mm	5'1" x 3'5"

* Refer to Sales Adviser



First Floor

Bedroom 2	4141 x 2657 mm	13'7" x 8'9"
Bedroom 3	3656 x 2658 mm	12'0" x 8'9"
Bathroom	2496 x 1986 mm	8'2" x 6'6"



Second Floor

Bedroom 1	6681 x 4731 * mm	21'11" * x 15'6"
En suite	2496 * x 1190 mm	8'2" * x 3'11"

* Overall floor dimension includes lowered ceiling areas

Key

B	Boiler	f/f	Fridge freezer space	wm	Washing machine space	WFH	Working from home space	↔	Dimension location
ST	Store	dw	Dishwasher space	w	Wardrobe space	RL	Rooflight		



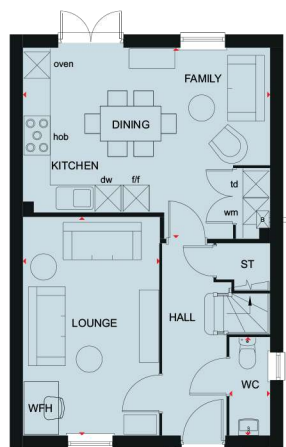
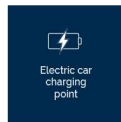
DAVID WILSON HOMES

We are on the New Homes Quality Code register of registered developers. "We" refers to the Barratt Developments PLC group brands including Barratt London, Barratt Homes and David Wilson Homes. All images used are for illustrative purposes. These and the dimensions given are illustrative for this house type and individual properties may differ. Please check with your Sales Adviser in respect of individual properties. We give maximum dimensions within each room which includes areas of fixtures and fittings including fitted furniture. These dimensions should not be used for carpet or flooring sizes, appliance spaces or items of furniture. All images, photographs and dimensions are not intended to be relied upon for, nor to form part of, any contract unless specifically incorporated in writing into the contract.

BDW004484/MAR24

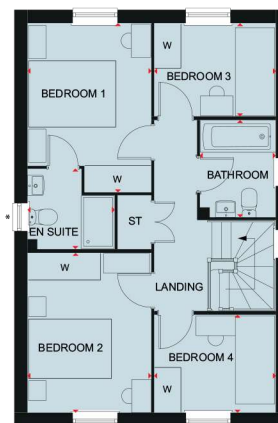
INGLEBY

FOUR BEDROOM HOME



Ground Floor

Lounge	4925 x 3095 mm	16'2" x 10'2"
Kitchen/Family/Dining	5365 x 4295 mm	18'6" x 14'1"
WC	2206 x 900 mm	7'3" x 2'11"



First Floor

Bedroom 1	3797 x 2800 mm	12'6" x 9'2"
En suite	1962 x 1800 mm	6'5" x 5'11"
Bedroom 2	3587 x 2800 mm	11'9" x 9'2"
Bedroom 3	2747 x 2073 mm	9'0" x 6'9"
Bedroom 4	2747 x 2181 mm	9'0" x 7'1"
Bathroom	2179 x 1700 mm	7'2" x 5'7"

Key

B	Boiler	wm	Washing machine space	f/f	Fridge freezer space	WFH	Working from home space	↗	Dimension location
ST	Store	dw	Dishwasher space	td	Tumble dryer space	W	Wardrobe space		



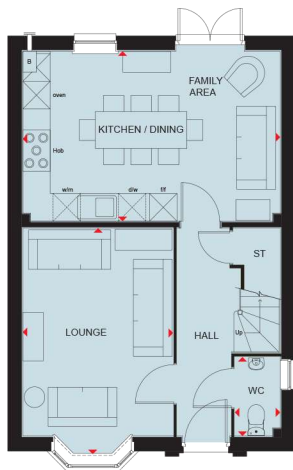
DAVID WILSON HOMES

We are on the New Homes Quality Code register of registered developers. "We" refers to the Barratt Developments PLC group brands including Barratt London, Barratt Homes and David Wilson Homes. All images used are for illustrative purposes. The images and the dimensions given are illustrative for this house type and individual properties may differ. Please check with your Sales Adviser in respect of individual properties. We give maximum dimensions within each room which includes areas of fixtures and fittings including fitted furniture. These dimensions should not be used for carpet or flooring sizes, appliance spaces or items of furniture. All images, photographs, dimensions and energy efficiency features depicted are not intended to be relied upon for, nor to form part of, any contract unless specifically incorporated in writing into the contract.

BDW004316/FEB24

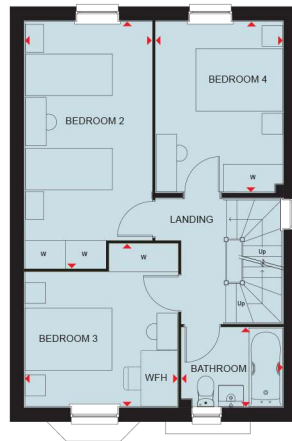
BAYSWATER

FOUR BEDROOM HOME



Ground Floor

Lounge	4895 x 3290 mm	16'1" x 10'10"
Kitchen/Family/Dining	5630 x 3680 mm	18'6" x 12'1"
WC	1712 x 1000 mm	5'7" x 3'3"



First Floor

Bedroom 2	2773 x 5341 mm	9'1" x 17'6"
Bedroom 3	3341 x 3517 mm	11'0" x 11'6"
Bedroom 4	2776 x 3686 mm	9'1" x 12'1"
Bathroom	2210 x 1712 mm	7'3" x 5'7"



First Floor

Bedroom 1	5970* x 3463 mm	19'7" x 11'4"
Dressing Area	2085 x 1954* mm	6'10" x 6'5"
En suite 1		

* Overall floor dimension includes lowered ceiling areas

Key

B Boiler	w/m Washing machine	f/f Fridge freezer space	W Wardrobe space	◆ Dimension location
ST Store	d/w Dishwasher space	WFH Working from home space	RL Roof lights	



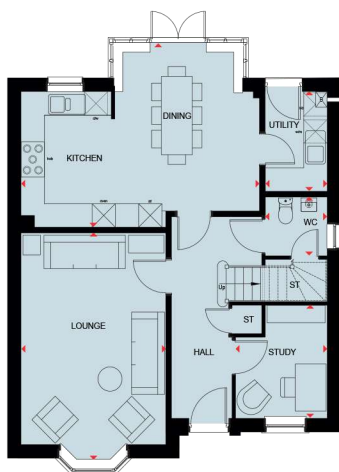
DAVID WILSON HOMES

We are on the New Homes Quality Code register of registered developers. "We" refers to the Barratt Developments PLC group brands including Barratt London, Barratt Homes and David Wilson Homes. All images used are for illustrative purposes. The images and the dimensions given are illustrative for this house type and individual properties may differ. Please check with your Sales Adviser in respect of individual properties. We give maximum dimensions within each room which includes areas of fixtures and fittings including fitted furniture. These dimensions should not be used for carpet or flooring sizes, appliance spaces or items of furniture. All images, photographs, dimensions and energy efficiency features depicted are not intended to be relied upon for, nor to form part of, any contract unless specifically incorporated in writing into the contract.

BDW004316/FEB24

HOLDEN

FOUR BEDROOM DETACHED HOME

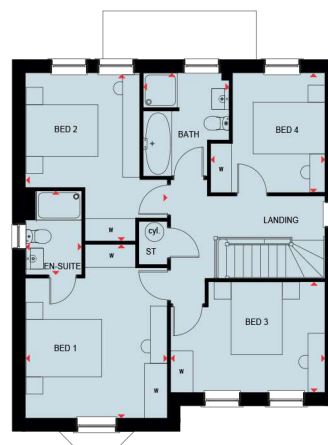


Ground Floor

Lounge
Kitchen/Dining
Study
Utility
WC

5797 x 3723 mm
6142 x 4685 mm
2881 x 2361 mm
2545 x 1588 mm
1498 x 1588 mm

19'0" x 12'3"
20'2" x 15'4"
9'6" x 7'9"
8'4" x 5'3"
4'11" x 5'3"



First Floor

Bedroom 1
En Suite
Bedroom 2
Bedroom 3
Bedroom 4
Bathroom

4538 x 3728 mm
2190 x 1471 mm
4379 x 3728 mm
4073 x 2881 mm
3115 x 3043 mm
2689 x 2266 mm

14'11" x 12'3"
7'2" x 4'10"
14'4" x 12'3"
13'4" x 9'5"
10'3" x 10'0"
8'10" x 7'5"

Key

B Boiler
ST Store

W Wardrobe space
f/f Fridge/freezer space

wm Washing machine space
dw Dishwasher space

CYL Cylinder
td Tumble dryer

➔ Dimension location



Scan here for more details



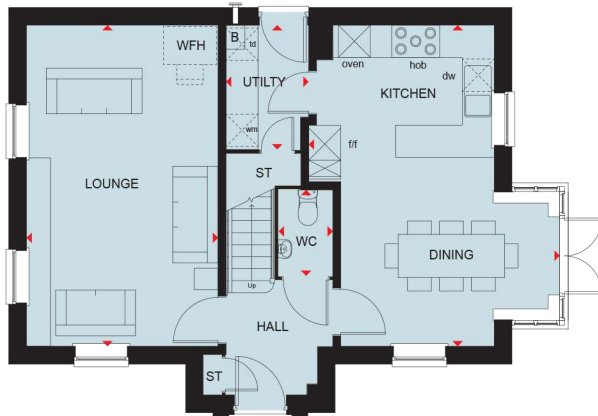
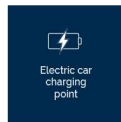
DAVID WILSON HOMES

We are on the New Homes Quality Code register of registered developers. "We" refers to the Barratt Developments PLC group brands including Barratt London, Barratt Homes and David Wilson Homes. All images used are for illustrative purposes. The images and the dimensions given are illustrative for this house type and individual properties may differ. Please check with your Sales Adviser in respect of individual properties. We give maximum dimensions within each room which includes areas of fixtures and fittings including fitted furniture. These dimensions should not be used for carpet or flooring sizes, appliance spaces or items of furniture. All images, photographs, dimensions and energy efficiency features depicted are not intended to be relied upon for, nor to form part of, any contract unless specifically incorporated in writing into the contract.

BDW004316/FEB24

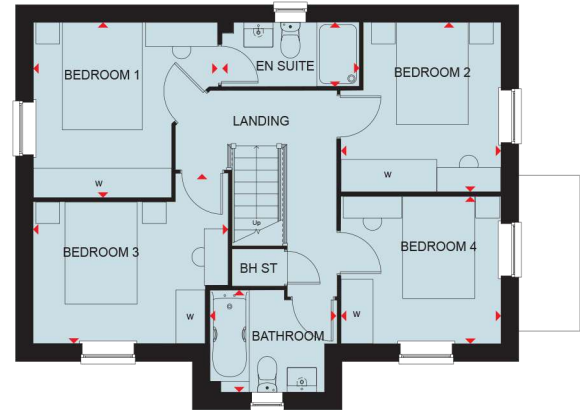
HOLLINWOOD

FOUR BEDROOM HOME



Ground Floor

Lounge	3595 x 5973 mm	11'10" x 19'7"
Kitchen/Dining	5973 x 4706 mm	19'7" x 15'5"
Utility	1550 x 2312 mm	5'1" x 7'7"
WC	1014 x 1600 mm	3'4" x 5'3"



First Floor

Bedroom 1	3457 x 3260 mm	11'4" x 10'8"
En suite	2574 x 1200 mm	8'5" x 4'0"
Bedroom 2	3005 x 3150 mm	9'10" x 10'4"
Bedroom 3	3661 x 3154 mm	12'0" x 10'4"
Bedroom 4	3005 x 2739 mm	9'10" x 9'0"
Bathroom	2373 x 1900 mm	7'9" x 6'3"

Key

B Boiler	BH ST Bulkhead Store	dw Dishwasher space	td Tumble dryer space	W Wardrobe space
ST Store	wm Washing machine space	t/f Fridge freezer space	WFH Working from home space	↔ Dimension location



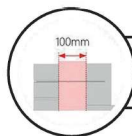
DAVID WILSON HOMES

We are on the New Homes Quality Code register of registered developers. "We" refers to the Barratt Developments PLC group brands including Barratt London, Barratt Homes and David Wilson Homes. All images used are for illustrative purposes. The images and the dimensions given are illustrative for this house type and individual properties may differ. Please check with your Sales Adviser in respect of individual properties. We give maximum dimensions within each room which includes areas of fixtures and fittings including fitted furniture. These dimensions should not be used for carpet or flooring sizes, appliance spaces or items of furniture. All images, photographs, dimensions and energy efficiency features depicted are not intended to be relied upon for, nor to form part of, any contract unless specifically incorporated in writing into the contract.

BDW004316/FEB24



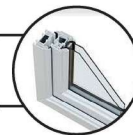
Photovoltaics



Maintain 100mm
Cavity With Full Fill
Insulation



Increased Loft
Insulation



Enhanced Double
Glazing

4

Airtightness



Larger Radiators
Future Proof Air
Source Heat Pump



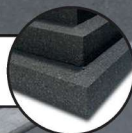
Waste Water Heat
Recovery



Photographic
Evidence



Decentralised
Mechanical
Extract Ventilation



Increased Floor
Insulation



Electric Car
Charging Point



Scan here to discover more

DAVID WILSON HOMES

NEW HOMES

Quality Code



Housebuilders and developers who build new homes will be expected to register with the [New Homes Quality Board](#) (NHQB). As long as a housebuilder or developer has followed the correct registration process, including completing the necessary training, introducing a complaints procedure, and following other processes and procedures that are needed to meet the requirements of this New Homes Quality Code (the code), they will become a registered developer.

Registered developers agree to follow the code and the New Homes Ombudsman Service, including accepting the decisions of the New Homes Ombudsman in relation to dealings with customers. If a registered developer does not meet the required standards, or fails to accept and act in line with the decisions of the New Homes Ombudsman, they may have action taken against them, including being removed from the register of registered developers.

The code sets out the requirements that registered developers must meet. The code may be updated from time to time to reflect changes to industry best practice as well as the decisions of the New Homes Ombudsman Service.

All homes built by registered developers must meet building-safety and other regulations. All registered developers should aim to make sure there are no snags or defects in their properties before the keys are handed over to a customer. If there are any snags or defects, these should be put right within the agreed timescales.

What the code covers

For the purposes of this code, 'customer' means a person who is buying or intends to buy a new home which they will live in or give to another person. (If a new home is being bought in joint names, 'the customer' includes all the joint customers.) However, the New

Homes Quality Board have also started work to consider other groups of customers and what they should be able to expect from a new home. This includes shared owners and people who are buying a new home to let to other people. Any changes the New Homes Quality Board make to the code to reflect the needs of other groups of customers will be developed through consultation, and they will continually assess and review the effectiveness of the code, and any new laws or regulations that apply. Other areas which are not covered by the code are claims for loss of property value or blight (where a property falls in value or becomes difficult to sell because of major public work in the area), personal injury or claims that are not covered by the scheme rules of the New Homes Ombudsman Service.



EXPERIENCE

— THE DAVID WILSON DIFFERENCE —

At David Wilson Homes we have been building quality homes across the UK for over 40 years. Our reputation is founded on our commitment to provide traditional homes in desirable locations built to a superb specification.

We* are delighted to have received over 90% homeowner recommendation since 2010. This Home Builders Federation accolade, recognises our commitment to bring you beautiful new homes.

Our collection of beautiful homes offer a range of spacious bedroom designs, located in highly desirable locations.

We would encourage you to come and experience the David Wilson Difference and we look forward to seeing you at one of our many developments.



DAVID WILSON HOMES

WHERE QUALITY LIVES