

WE'LL HELP YOU FIND THE
HOME THAT'S RIGHT FOR YOU



MOVING MADE AFFORDABLE WITH BARRATT HOMES



BARRATT
HOMES



A QUALITY AWARD-WINNING HOMEBUILDER

Barratt Homes has years of experience building thoughtfully designed, high quality homes. We've been awarded 5 Stars by the Home Builders Federation every year since 2009 because over 90% of our homeowners would recommend us to a friend*. And that's not all. Our homes come with an NHBC Buildmark Warranty which gives you a 10 year structural warranty and a 2 year fixtures and fittings warranty* as standard. This is just one of the added benefits of buying a new home.

We do all we can to make moving easy, putting people in touch with dedicated experts throughout the journey, which is why for more than 60 years, we have earned ourselves an enviable reputation for excellence.

At Barratt we build every type of home for every type of buyer, in great locations the length and breadth of the country. Whether you're putting your first foot on the property ladder, moving up to a larger home or even downsizing, Barratt can help you find the home that suits you perfectly.





OUTSTANDING DESIGN

**BARRATT HOMES ARE BUILT AROUND
THE WAY YOU WANT TO LIVE**

Careful consideration and attention to detail goes into every home we build, and our homes are flexible and adaptable to suit every lifestyle. Open-plan living spaces are integral to our design, helping you make the most of space and natural light, and allowing every room to be enjoyed to its maximum potential.

We also know how vital outdoor space is in creating places people love to live in. Whether it's gardens or landscaped areas, we make sure there's plenty surrounding the homes we build, for the whole neighbourhood to enjoy.





BARRATT 'CHOICES'

**THE PERFECT WAY TO MAKE
YOUR HOME YOUR OWN**

Barratt 'Choices'[^] is available from the moment you discover your new home. You can pick from a great range of top-quality fixtures and fittings, stunning flooring, plus kitchen upgrade options, with the maximum convenience and minimum fuss.

Speak to a Sales Adviser today to find out more



Terms, conditions and exclusions apply. See website or local sales centre for details
See our website or speak to one of our Sales Advisers for details.
First 2 years covered by Builder Warranty or similar.
Years 3-10 covered by NHBC Insurance or similar
Available on virtually all of our developments. Your statutory rights are unaffected

^{*}We are the only major national housebuilder to be awarded this key industry award 11 years in a row. "We" refers to the Barratt Developments PLC group brands including Barratt London, Barratt Homes and David Wilson Homes. Based on HBF star rating scheme from 2010 to 2020 derived from the NHBC national new homes survey at eight weeks over 90% of Barratt Developments PLC group customer would recommend our brands to a friend.

[^]Choices upgrades are subject to additional cost and build stage



THE HIGHEST QUALITY CUSTOMER SERVICE

At Barratt we are genuinely committed to delivering the highest standards of Customer Service. The same exacting standards that have helped us win more quality awards than any other major housebuilder and also ensure we look after our customers as well as we possibly can.

We believe that solid foundations are as important to a customer relationship as they are to a building. During the planning and design process we go to great lengths to make sure the homes and developments we build are perfectly in tune with the needs and aspirations of their prospective owners.

As your home is built, it is checked at every stage to ensure it reaches the exacting standards we demand.

Our Customer Service Charter lays out our commitments to you and details the care, support and assistance we'll provide you with throughout your purchase and long after you've moved in.

Barratt Developments Plc has been awarded an exclusive 5 Star Housebuilder Award by the Home Builders Federation each year since 2010, which is more than any other major national housebuilder. This coveted accolade is the highest level of certification available from the Home Builders Federation, and the result of both customer recommendations and our superior build quality.

NEW HOMES QUALITY CODE

Housebuilders and developers who build new homes will be expected to register with the New Homes Quality Board (NHQB). As long as a housebuilder or developer has followed the correct registration process, including completing the necessary training, introducing a complaints procedure, and following other processes and procedures that are needed to meet the requirements of this New Homes Quality Code (the code), they will become a registered developer.

Registered developers agree to follow the code and the New Homes Ombudsman Service, including accepting the decisions of the New Homes Ombudsman in relation to dealings with customers. If a registered developer does not meet the required standards, or fails to accept and act in line with the decisions of the New Homes Ombudsman, they may have action taken against them, including being removed from the register of registered developers.

The code sets out the requirements that registered developers must meet. The code may be updated from time to time to reflect changes to industry best practice as well as the decisions of the New Homes Ombudsman Service.

All homes built by registered developers must meet building-safety and other regulations. All registered developers should aim to make sure there are no snags or defects in their properties before the keys are handed over to a customer. If there are any snags or defects, these should be put right within the agreed timescales.

WHAT THE CODE COVERS

For the purposes of this code, 'customer' means a person who is buying or intends to buy a new home which they will live in or give to another person. (If a new home is being bought in joint names, 'the customer' includes all the joint customers.) However, the New Homes Quality Board have also started work to consider other groups of customers and what they should be able to expect from a new home. This includes shared owners and people who are buying a new home to let to other people. Any changes the New Homes Quality Board make to the code to reflect the needs of other groups of customers will be developed through consultation, and they will continually assess and review the effectiveness of the code, and any new laws or regulations that apply. Other areas which are not covered by the code are claims for loss of property value or blight (where a property falls in value or becomes difficult to sell because of major public work in the area), personal injury or claims that are not covered by the scheme rules of the New Homes Ombudsman Service.













HOPECROFT VIEW

DEVELOPMENT LAYOUT - PHASE 1 & 2

- **Cupar**
3 bedroom end/mid-terraced/semi-detached home
- **Thurso**
3 bedroom semi-detached home
- **Abergeldie**
3 bedroom semi-detached/end-terraced home
- **Ravenscraig**
3 bedroom semi-detached home
- **Craigend**
3 bedroom semi-detached home
- **Glamis**
4 bedroom detached home
- **Fenton**
4 bedroom detached home
- **Dean**
4 bedroom detached home
- **Balloch**
4 bedroom detached home
- **Crombie**
4 bedroom detached home
- **Campbell**
4 bedroom detached home
- **Harris**
4 bedroom detached home
- **Buchanan**
4 bedroom detached home

- V **Visitor Parking Space**
- S/S **Substation**
- SH **Show Home**
- SC **Sales Centre**

-  **Grassland**
-  **New tree line**
-  **Existing trees**
-  **Kickabout area**
-  **Wildflower meadow**
-  **Parkland space**
-  **Paths**
-  **Sustainable Urban Drainage System (SUDS)**
-  **Solar Panels**
Featured on every plot - please refer to working drawings for specific PV information
-  **Electric vehicle charging point locations**
Selected plots*

Giving nature a home on this development:

-  **Bug Hotel**
Selected plots*
-  **Hedgehog highway**
Selected plots*
-  **Bird box**
Selected plots*

*Positioning of our sustainability features are subject to change. Speak to a Sales Adviser for more information.



barratthomes.co.uk
0333 355 8464



3 BEDROOM SEMI-DETACHED/TERRACED HOUSE



- Open-plan kitchen and dining area, with access to the rear garden, creates the ideal hub for all the family
- Separate lobby with practical utility space and cloakroom
- Front-aspect lounge, providing plenty of space to relax
- Upstairs are two double bedrooms, with an en suite to bedroom 1, a single bedroom and family bathroom



Ground Floor

Lounge	3696 x 4650mm	12'2" x 15'3"
Kitchen/Dining	3595 x 3598mm	11'10" x 11'10"
WC	1125 x 1743mm	3'8" x 5'9"

[Approximate dimensions]



First Floor

Bedroom 1	3728 x 3316mm	12'3" x 10'11"
En Suite	1654 x 1672mm	5'5" x 5'6"
Bedroom 2	3066 x 3329mm	10'1" x 10'11"
Bedroom 3	2016 x 2923mm	6'7" x 9'7"
Bathroom	1946 x 1900mm	6'5" x 6'3"

[Approximate dimensions]

KEY	B	Boiler	t/f	Fridge/freezer space	↔	Dimension location
	ST	Store	dw	Dishwasher space		
	wm	Washing machine space	w	Wardrobe space		

THURSO

3 BEDROOM SEMI DETACHED HOME



- Superb family home with the open-plan kitchen flowing into the dining area, with access to the rear garden
- Bright, front-aspect lounge, a cloakroom and practical utility and storage space complete the ground floor
- Upstairs are three double bedrooms, the main with en suite, and a family bathroom



Ground Floor

Lounge	3328 x 3707mm	10'11" x 12'2"
Kitchen/Dining	5330 x 3085mm	17'6" x 10'1"
WC	1750 x 1129mm	5'9" x 3'8"
Utility	1257 x 1129mm	4'1" x 3'8"

(Approximate dimensions)



First Floor

Bedroom 1	3068 x 3585mm	10'1" x 11'9"
En Suite	1397 x 2280mm	4'7" x 7'6"
Bedroom 2	2851 x 4340mm	9'4" x 14'3"
Bedroom 3	2464 x 3108mm	8'1" x 10'2"
Bathroom	2157 x 1882mm	7'1" x 6'2"

(Approximate dimensions)

KEY	B	Boiler	wm	Washing machine space	w	Wardrobe space
	ST	Store	f/f	Fridge/freezer space	↔	Dimension location
	BH ST	Bulkhead store	dw	Dishwasher space		

ABERGELDIE

3 BEDROOM END-TERRACED/SEMI-DETACHED HOME



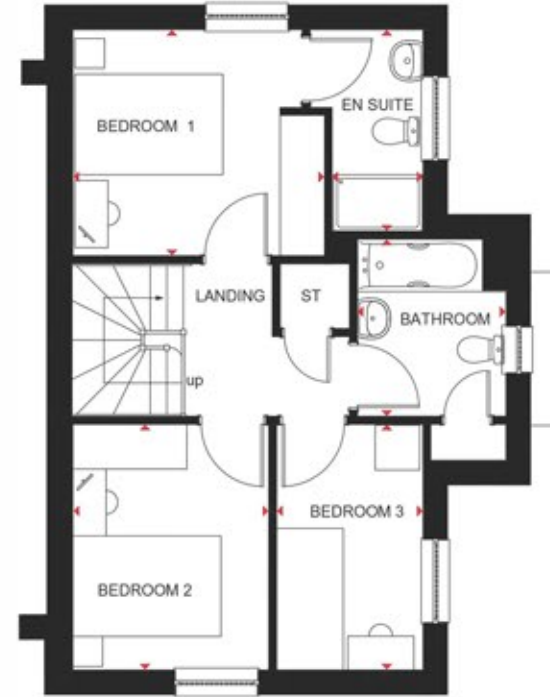
- Open-plan kitchen with dining area and access to the garden creates an ideal hub for living and entertaining
- Separate dual-aspect lounge provides a bright space for all the family to relax in comfort
- Upstairs is a main bedroom with en suite shower room, a further double bedroom, a single bedroom and a family bathroom



Ground Floor

Lounge	4772 x 3273mm	15'8" x 10'9"
Kitchen/Dining	4732 x 3969mm	15'6" x 13'0"
WC	2515 x 1227mm	8'3" x 4'0"

[Approximate dimensions]



First Floor

Bedroom 1	3401 x 3036mm	11'2" x 10'0"
En Suite	1529 x 2708mm	5'0" x 8'11"
Bedroom 2	2651 x 3296mm	8'8" x 10'10"
Bedroom 3	1979 x 3297mm	6'6" x 10'10"
Bathroom	2014 x 2967mm	6'7" x 9'9"

[Approximate dimensions]

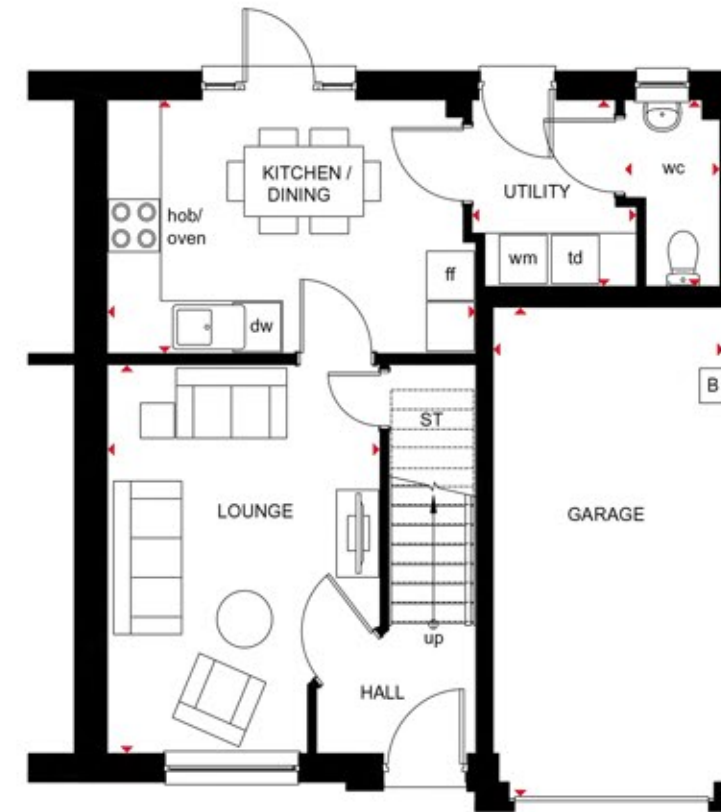
KEY	ST	Store	dw	Dishwasher space
	wm	Washing machine space	◀▶	Dimension location
	f/f	Fridge/freezer space		

RAVENS CRAIG

3 BEDROOM SEMI-DETACHED HOME



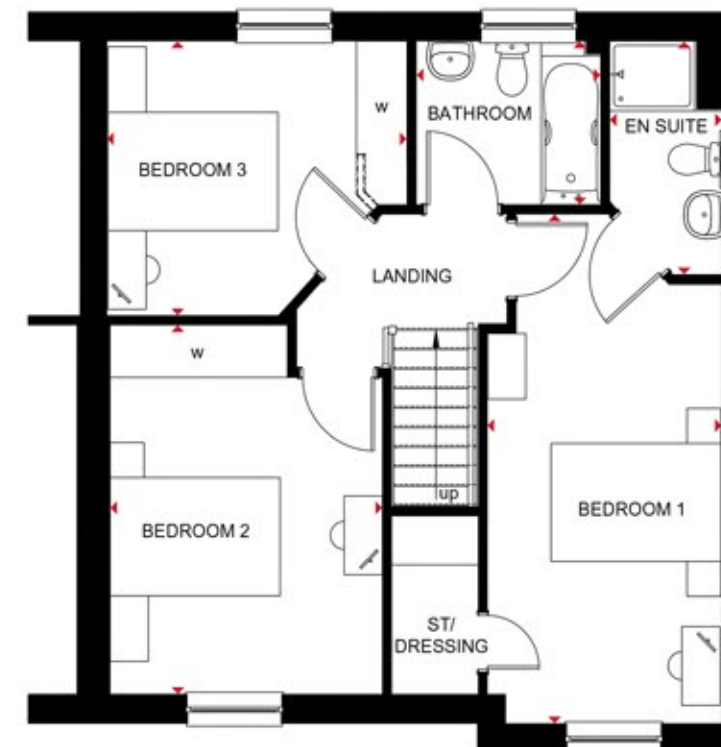
- Good-sized home, with room for a growing family
- Open-plan kitchen with dining area and access to the rear garden, and a separate utility
- Front-aspect lounge has plenty of space to relax in comfort and an integral garage provides added security
- Three double bedrooms, the main bedroom with en suite, and family bathroom are on the first floor



Ground Floor

Lounge	3204 x 4442mm	10'6" x 14'7"
Kitchen/Dining	4329 x 2898mm	14'2" x 9'6"
Utility	1935 x 2132mm	6'4" x 7'0"
WC	1123 x 2132mm	3'8" x 7'0"
Garage	2738 x 5446mm	9'0" x 17'10"

(Approximate dimensions)



First Floor

Bedroom 1	2763 x 5828mm	9'1" x 19'1"
En Suite	1322 x 2673mm	4'4" x 8'9"
Bedroom 2	3204 x 4222mm	10'6" x 13'10"
Bedroom 3	3532 x 3140mm	11'7" x 10'4"
Bathroom	2170 x 1873mm	7'1" x 6'2"

(Approximate dimensions)

KEY	B	Boiler	l/f	Fridge/freezer space	w	Wardrobe space
	ST	Store	dw	Dishwasher space	◀▶	Dimension location
	wm	Washing machine space	td	Tumble dryer space		

CRAIGEND

3 BEDROOM SEMI-DETACHED HOME



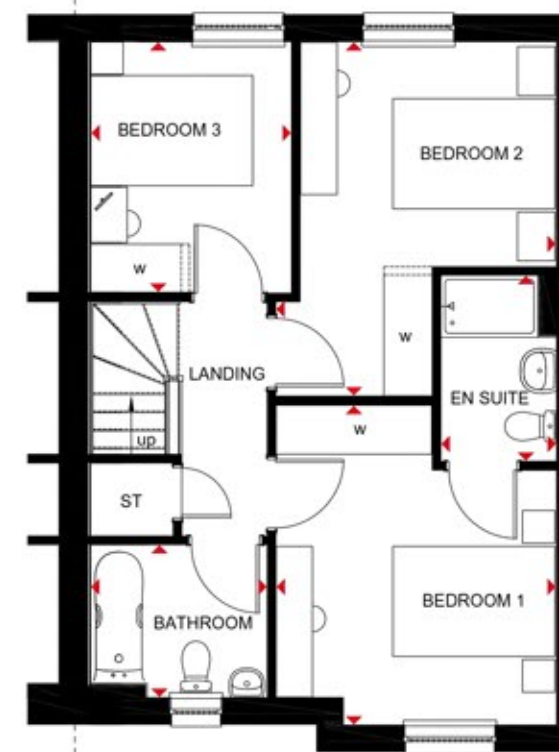
- Spacious open-plan kitchen with dining and family areas, and access to the rear garden and utility
- Bright, front-aspect lounge provides room for everyone to relax
- Plenty of storage space and a cloakroom complete the ground floor making this a practical family home
- Upstairs are three double bedrooms, the main with en suite, and a family bathroom



Ground Floor

Lounge	3565 x 4141mm	11'8" x 13'7"
Kitchen/ Family/Dining	5752 x 3082mm	18'10" x 10'1"
WC	1732 x 1161mm	5'8" x 3'10"
Utility	1728 x 1161mm	5'8" x 3'10"

[Approximate dimensions]



First Floor

Bedroom 1	3465 x 3923mm	11'4" x 12'10"
En Suite	1427 x 2280mm	4'8" x 7'6"
Bedroom 2	3465 x 4340mm	11'4" x 14'3"
Bedroom 3	2482 x 3114mm	8'2" x 10'3"
Bathroom	2182 x 1876mm	7'2" x 6'2"

[Approximate dimensions]

KEY	B	Boiler	t/f	Fridge/freezer space	◀▶	Dimension location
	ST	Store	dw	Dishwasher space		
	wm	Washing machine space	w	Wardrobe space		

GLAMIS

4 BEDROOM DETACHED HOME



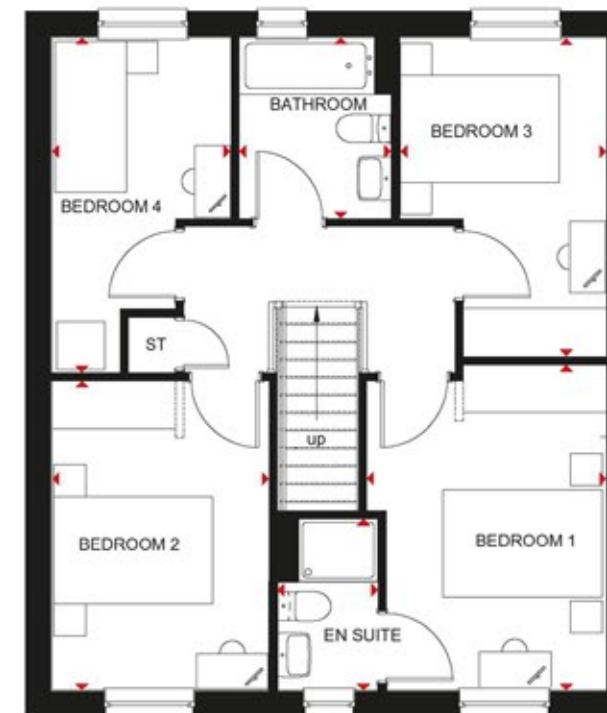
- This detached home features four bedrooms and generous living spaces
- The ground floor has an integral garage, a large lounge and open-plan kitchen with dining and access to the garden area. A functional utility room also leads to the garden
- On the first floor you will find three double bedrooms and one single which can easily be used as a comfortable home office
- There's a family bathroom with bath, and the main bedroom is en suite



Ground Floor

Lounge	3015 x 5251mm	9'11" x 17'3"
Kitchen/ Dining	4919 x 2766mm	16'2" x 9'1"
WC	1948 x 1114mm	6'5" x 3'8"
Utility	1948 x 1592mm	6'5" x 5'3"
Garage	2681 x 5185mm	8'10" x 17'10"

(Approximate dimensions)



First Floor

Bedroom 1	3018 x 4098mm	9'11" x 13'5"
En Suite	1272 x 2165mm	4'2" x 7'1"
Bedroom 2	2727 x 3895mm	8'11" x 12'9"
Bedroom 3	2605 x 4009mm	8'7" x 13'2"
Bedroom 4	2251 x 4212mm	7'5" x 13'10"
Bathroom	1916 x 2272mm	6'3" x 7'5"

(Approximate dimensions)

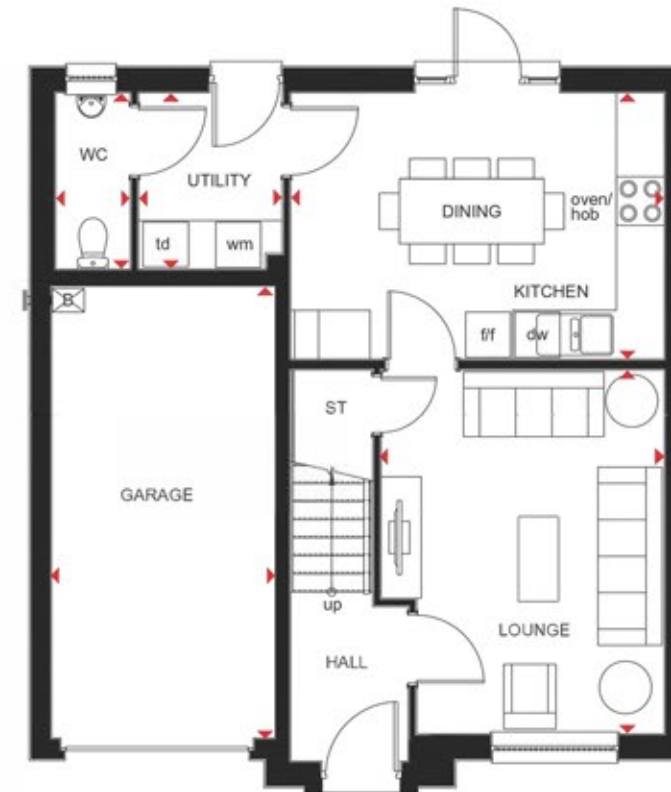
KEY	B	Boiler	f/f	Fridge/freezer space	↔	Dimension location
	ST	Store	dw	Dishwasher space		
	wm	Washing machine space	td	Tumble dryer space		

FENTON

4 BEDROOM DETACHED HOME



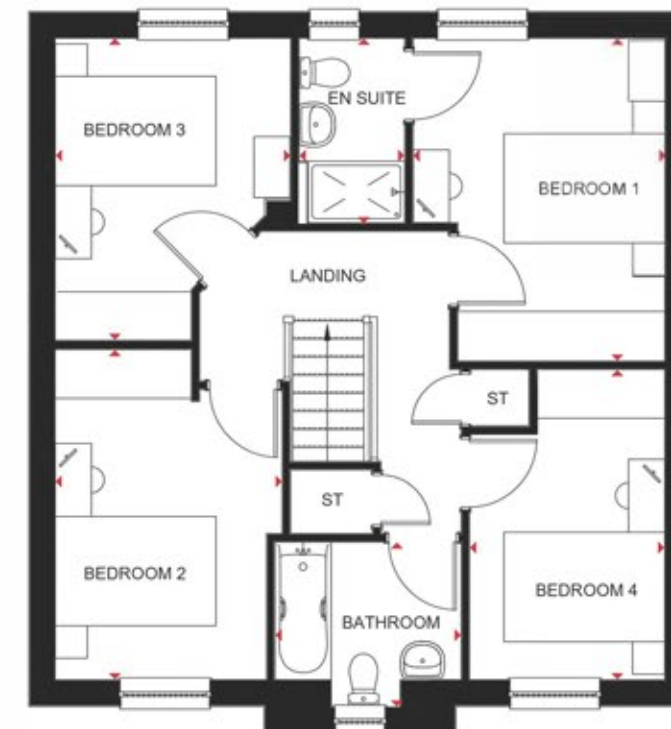
- Large, front-aspect lounge with room for relaxing and entertaining
- Open-plan fitted kitchen with dining area and access to the rear garden, plus a separate utility room and WC
- Integral garage for added convenience and security
- First floor comprises four double bedrooms, the main bedroom with en suite, and a family bathroom



Ground Floor

Lounge	3527 x 4483mm	11'7" x 14'8"
Kitchen/Dining	4652 x 3280mm	15'3" x 10'9"
Utility	1789 x 2141mm	5'10" x 7'0"
WC	929 x 2141mm	3'1" x 7'0"
Garage	2789 x 5520mm	9'2" x 18'1"

[Approximate dimensions]



First Floor

Bedroom 1	3129 x 3984mm	10'3" x 13'1"
En Suite	1313 x 2279mm	4'4" x 7'6"
Bedroom 2	2823 x 4074mm	9'3" x 13'4"
Bedroom 3	2929 x 3729mm	9'7" x 12'3"
Bedroom 4	2426 x 3829mm	8'0" x 12'7"
Bathroom	2316 x 2038mm	7'7" x 6'8"

[Approximate dimensions]

KEY	B	Boiler	t/f	Fridge/freezer space	◀▶	Dimension location
	ST	Store	dw	Dishwasher space		
	wm	Washing machine space	td	Tumble dryer space		

DEAN

4 BEDROOM DETACHED HOME



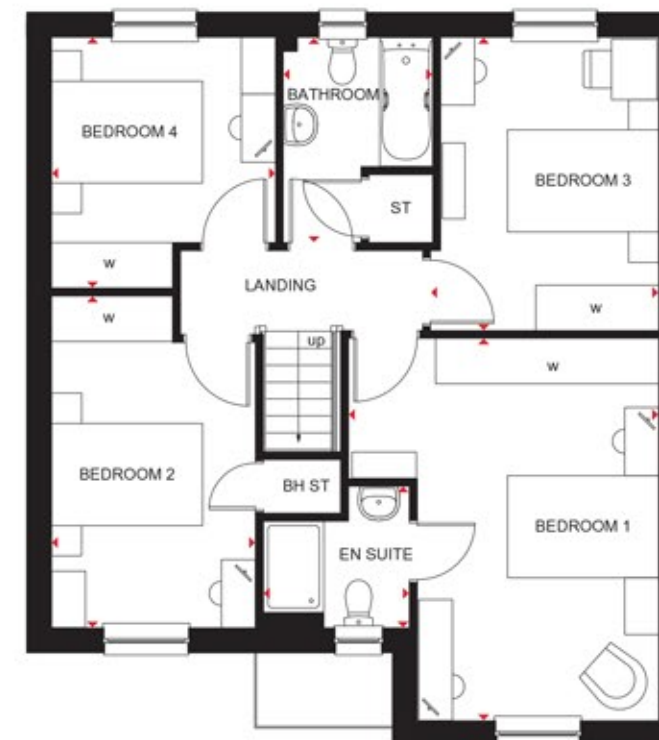
- Spacious kitchen with dining and family areas, separate utility, WC, and access to the garden via French doors
- Front-aspect lounge and an integral garage for added security complete the ground floor
- Upstairs are four double bedrooms, the main bedroom with en suite, and a family bathroom, making this a perfect family home



Ground Floor

Lounge	3203 x 5351mm	10'6" x 17'7"
Kitchen/Dining/Family	5226 x 3535mm	17'2" x 11'7"
Utility	1480 x 2146mm	4'10" x 7'0"
WC	1100 x 2146mm	3'7" x 7'0"
Garage	2673 x 5411mm	8'9" x 17'9"

[Approximate dimensions]



First Floor

Bedroom 1	4103 x 5052mm	13'6" x 16'7"
En Suite	1932 x 1868mm	6'4" x 6'2"
Bedroom 2	2697 x 4384mm	8'10" x 14'5"
Bedroom 3	3018 x 3875mm	9'11" x 12'9"
Bedroom 4	2961 x 3315mm	9'9" x 10'11"
Bathroom	1975 x 2715mm	6'6" x 8'11"

[Approximate dimensions]

KEY	B	Boiler	wm	Washing machine space	td	Tumble dryer space
	ST	Store	f/f	Fridge/freezer space	w	Wardrobe space
	BH ST	Bulkhead store	dw	Dishwasher space	◀▶	Dimension location

BALLOCH

4 BEDROOM DETACHED HOME



- Beautifully presented family home, fully designed for flexible living
- As you enter the home, you will find the study, WC and large front-aspect lounge off the main hallway
- Open-plan kitchen complete with dining space, family area and utility at the back of the home, with glazed double doors opening out onto the outdoor space
- Upstairs has four corner double bedrooms, complete with one en suite and a main bathroom



Ground Floor

Lounge	3741 x 4843mm	12'3" x 15'11"
Kitchen/ Dining/Family	8502 x 2726mm	27'11" x 8'11"
WC	1734 x 1445mm	5'8" x 4'9"
Utility	2515 x 1717mm	8'3" x 5'8"
Study	2514 x 2651mm	8'3" x 8'8"

[Approximate dimensions]



First Floor

Bedroom 1	3763 x 4156mm	12'4" x 13'8"
En Suite	1830 x 1767mm	6'0" x 5'10"
Bedroom 2	3509 x 4271mm	11'6" x 14'0"
Bedroom 3	3065 x 3436mm	10'1" x 11'3"
Bedroom 4	2978 x 3231mm	9'9" x 10'7"
Bathroom	2250 x 1698mm	7'5" x 5'7"

[Approximate dimensions]

KEY	B	Boiler	wm	Washing machine space	td	Tumble dryer space
	ST	Store	f/f	Fridge/freezer space	w	Wardrobe space
	BH ST	Bulkhead store	dw	Dishwasher space	↔	Dimension location

4 BEDROOM DETACHED HOME



- Impressive four bedroom detached home, ideal for new or growing families
- A comfortable front-facing living room offset from the hallway
- Light and airy all-in-one kitchen and dining area opens out onto the rear garden, with a separate utility and WC
- Upstairs offers one main bedroom and en suite, three double bedrooms, a family bathroom and study



Ground Floor

Lounge	3564 x 5653mm	11'8" x 18'7"
Kitchen/Dining/Family	6658 x 3430mm	21'10" x 11'3"
Utility	1737 x 2025mm	5'8" x 6'8"
WC	1737 x 1300mm	5'8" x 4'3"
Garage	2758 x 5612mm	9'1" x 18'5"

[Approximate dimensions]



First Floor

Bedroom 1	3417 x 4924mm	11'3" x 16'2"
En Suite	1422 x 2260mm	4'8" x 7'5"
Bedroom 2	3527 x 4197mm	11'7" x 13'9"
Bedroom 3	2786 x 3919mm	9'2" x 12'10"
Bedroom 4	2952 x 3323mm	9'8" x 10'11"
Study	2192 x 1853mm	7'2" x 6'1"
Bathroom	2150 x 2224mm	7'1" x 7'4"

[Approximate dimensions]

KEY	B Boiler	wm Washing machine space	td Tumble dryer space
	ST Store	f/f Fridge/freezer space	w Wardrobe space
	BH ST Bulkhead store	dw Dishwasher space	↔ Dimension location

CAMPBELL

4 BEDROOM DETACHED HOME



- Large open-plan kitchen includes a dual-aspect dining area with access to the garden via French doors, and a separate utility
- There's plenty of room to relax in comfort in the spacious lounge
- Upstairs is a main bedroom with en suite shower room
- Three further double bedrooms and a family bathroom make this a great family home



Ground Floor

Lounge	6464 x 3238mm	21'2" x 10'7"
Kitchen/ Dining/Family	6464 x 3330mm	21'2" x 10'11"
Utility	2004 x 2311mm	6'7" x 7'7"
WC	1813 x 1186mm	5'11" x 3'11"

[Approximate dimensions]



First Floor

Bedroom 1	3478 x 4564mm	11'5" x 15'0"
En Suite	1917 x 2915mm	6'3" x 9'7"
Bedroom 2	2881 x 3337mm	9'5" x 10'11"
Bedroom 3	3147 x 3258mm	10'4" x 10'8"
Bedroom 4	3212 x 3273mm	10'6" x 10'9"
Bathroom	1707 x 2350mm	5'7" x 7'9"

[Approximate dimensions]

KEY	B	Boiler	f/f	Fridge/freezer space	w	Wardrobe space
	ST	Store	dw	Dishwasher space	↔	Dimension location
	wm	Washing machine space	td	Tumble dryer space		

4 BEDROOM DETACHED HOME



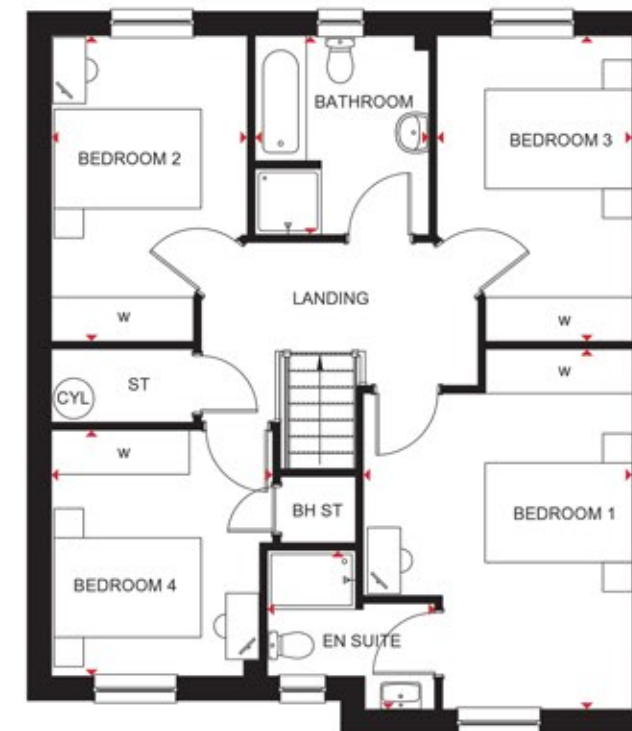
- Attractive detached home designed for modern family living
- Large and bright open-plan kitchen with flexible dining and family areas leading to the garden
- Separate study, utility and good-sized lounge provide plenty of dedicated space for all the family to work and relax
- Four double bedrooms – the spacious main bedroom with en suite – and a family bathroom with separate shower are on the first floor



Ground Floor

Lounge	3640 x 5126mm	11'11" x 16'10"
Kitchen/ Dining/Family	7905 x 3883mm	25'11" x 12'9"
Utility	1998 x 1696mm	6'7" x 5'7"
WC	1998 x 1200mm	6'7" x 3'11"
Study	1998 x 2736mm	6'7" x 9'0"

(Approximate dimensions)



First Floor

Bedroom 1	3665 x 4895mm	12'0" x 16'1"
En Suite	2276 x 2159mm	7'6" x 7'1"
Bedroom 2	2663 x 4155mm	8'9" x 13'8"
Bedroom 3	2667 x 4155mm	8'9" x 13'8"
Bedroom 4	3010 x 3345mm	9'11" x 11'0"
Bathroom	2365 x 2705mm	7'9" x 8'10"

(Approximate dimensions)

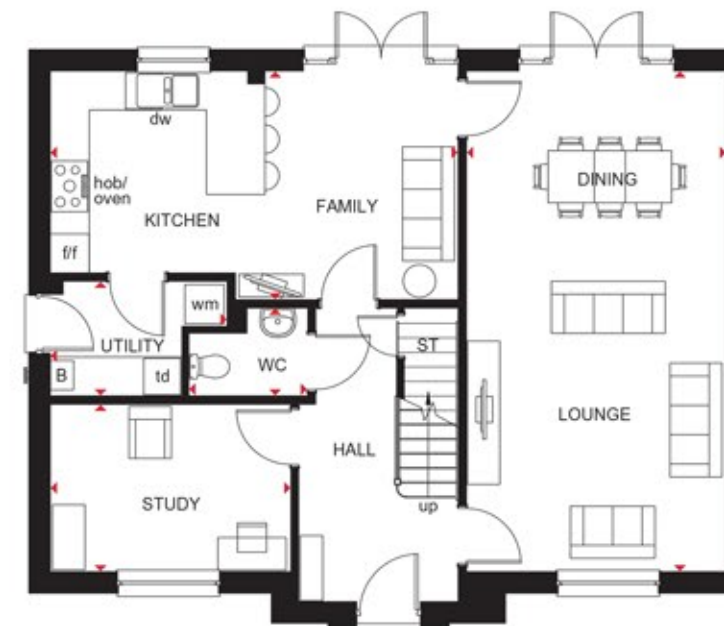
KEY	B	Boiler	CYL	Cylinder	dw	Dishwasher space	◄ ►	Dimension location
	ST	Store	wm	Washing machine space	td	Tumble dryer space		
	BH ST	Bulkhead store	t/f	Fridge/freezer space	w	Wardrobe space		

BUCHANAN

4 BEDROOM DETACHED HOME



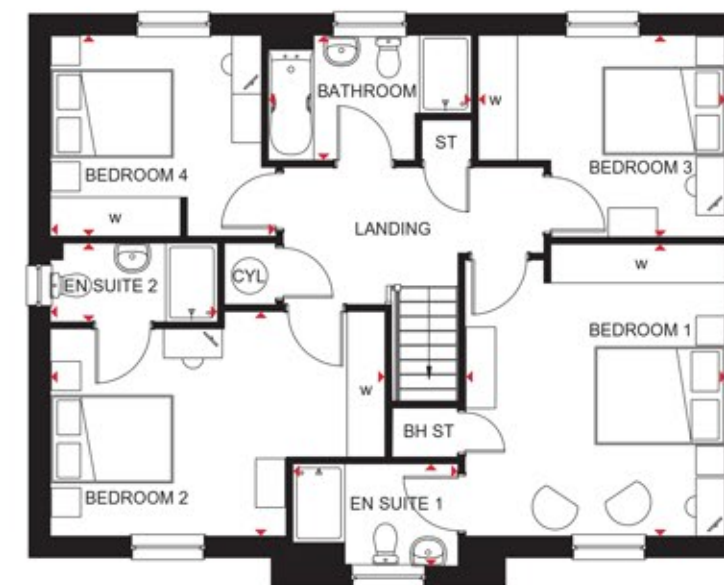
- Oversized windows maximise natural light in this attractive four bedroom detached home
- Spacious, dual-aspect lounge and open-plan kitchen with dining area, both opening onto the rear garden, provide a great home for the family with plenty of space to entertain
- First floor features four double bedrooms, both the main bedroom and bedroom 2 with en suite, and family bathroom



Ground Floor

Lounge/Dining	3997 x 7692mm	13'1" x 25'3"
Kitchen/ Family Room	6268 x 3514mm	20'7" x 11'6"
Study	3698 x 2572mm	12'2" x 8'5"
WC	1831 x 1350mm	6'0" x 4'5"
Utility	2718 x 1760mm	8'11" x 5'9"

[Approximate dimensions]



First Floor

Bedroom 1	4020 x 4487mm	13'2" x 14'9"
En Suite 1	2540 x 1571mm	8'4" x 5'2"
Bedroom 2	5143 x 3450mm	16'10" x 11'4"
En Suite 2	2572 x 1210mm	8'5" x 4'0"
Bedroom 3	3813 x 3100mm	12'6" x 10'2"
Bedroom 4	3473 x 3087mm	11'5" x 10'2"
Bathroom	3123 x 1921mm	10'3" x 6'4"

[Approximate dimensions]

KEY	B Boiler	CYL Cylinder	dw Dishwasher space	Dimension location
	ST Store	wm Washing machine space	td Tumble dryer space	
	BH ST Bulkhead store	f/f Fridge/freezer space	w Wardrobe space	

