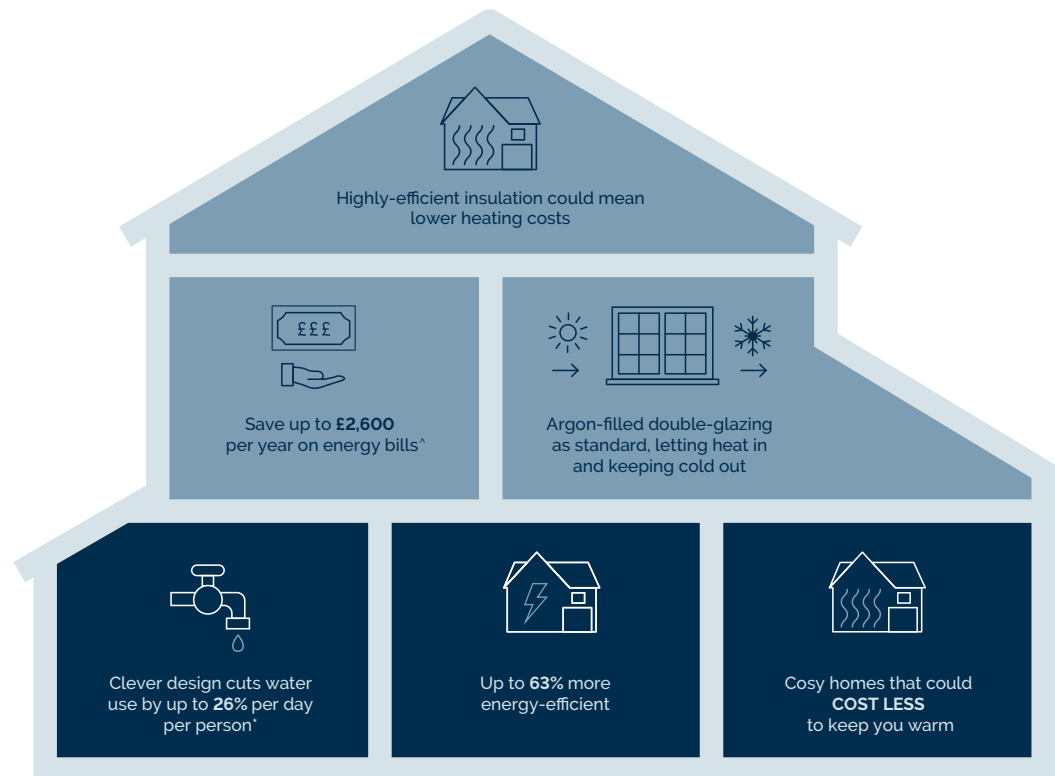


SUNDIAL PLACE

T H O R N T O N

WE'RE HELPING TO MAKE YOUR HOME MORE ENERGY-EFFICIENT

We create low-carbon and efficient homes that are designed and built for better living and meet the challenges of the future.



[^]Indicative figures, based on HBF "Watt a Save" report published Feb 2023.

*Source: [Water UK](#)

CREATING A SUSTAINABLE COMMUNITY

WHERE FAMILIES AND NATURE CAN THRIVE

At David Wilson Homes, we do more than simply craft beautiful homes and desirable developments.

We design and build great places that meet the highest standards and that promote sustainable healthy and happy living for our customers.

We know we must give our customers confidence that their homes are designed and built to meet the challenges of the future. We do this through creating places where people and nature can thrive.





SUNDIAL PLACE



THORNTON

Lydiate Lane, Thornton, Liverpool,
Merseyside L23 1AP

KEY

-  **The Wilford**
2 bedroom home
-  **The Hadley**
3 bedroom home
-  **The Greenwood**
3 bedroom home
-  **The Woodlark**
4 bedroom home
-  **The Bradgate**
4 bedroom home
-  **The Skylark**
4 bedroom home
-  **The Peregrine**
4 bedroom home
-  **Affordable Rent**
-  **Discount to Open Market Value**

All plots built to 2021 Building Regulations

-  Stone Plots
-  Marketing Suite & Show Homes



House Sparrow Nesting Terrace



Small Bird Nest Box



Bat Box



Swift Nesting Box



Note: Hedgehog highway to all plots,
ask your sales adviser for more details.

Barratt Homes

Electric Vehicle
Charging Points



Positioning of our sustainability features are subject to
change. Speak to a Sales Adviser for more information.

dwh.co.uk



DAVID WILSON HOMES
WHERE QUALITY LIVES

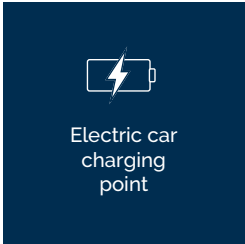
Images and development layouts are for illustrative purposes, should be used for general guidance only and are not intended to form part of any contract or warranty unless specifically incorporated in writing. Development layouts including house types and tenures, the location of affordable housing, parking arrangements, play areas, landscaping and public open spaces are subject to change including any changes required due to a change in planning permission. Sundial Place is a marketing name only and may not be the designated postal address, which may be determined by The Post Office.

WILFORD

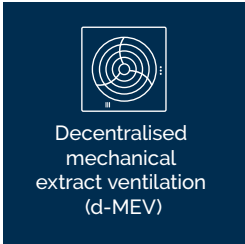
TWO BEDROOM HOME



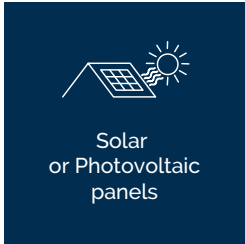
Highly-efficient insulation



Electric car charging point



Decentralised mechanical extract ventilation (d-MEV)



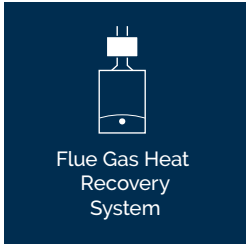
Solar or Photovoltaic panels



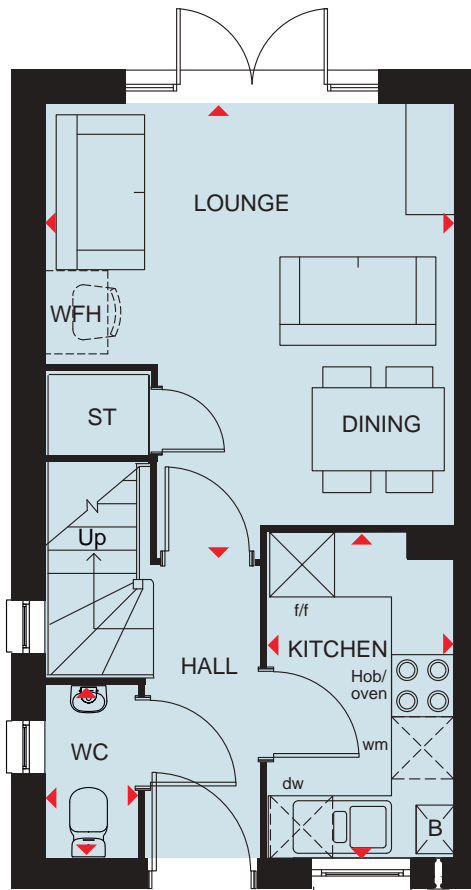
Waste Water Heat Recovery Systems



Argon-filled double-glazing



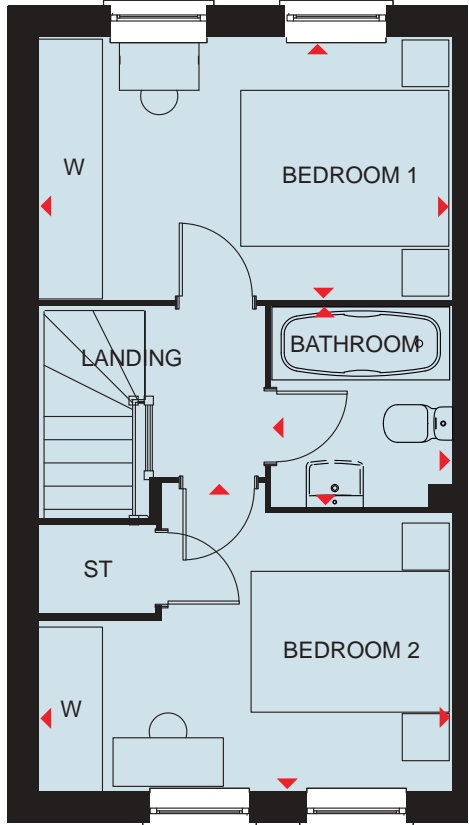
Flue Gas Heat Recovery System



Ground Floor

| | | |
|---------------|----------------|----------------|
| Lounge/Dining | 4357 x 3923 mm | 14'4" x 12'10" |
| Kitchen | 3083 x 1780 mm | 10'1" x 5'10" |
| WC | 1615 x 880 mm | 5'4" x 2'11" |

* Window may be omitted on certain plots.
Speak to a Sales Adviser for details on individual plans.



First Floor

| | | |
|-----------|----------------|---------------|
| Bedroom 1 | 3923 x 2487 mm | 12'10" x 8'2" |
| Bedroom 2 | 3923 x 2926 mm | 12'10" x 9'7" |
| Bathroom | 1897 x 1695 mm | 6'3" x 5'7" |

Key

| | | | | | | | |
|----|--------|----|-----------------------|-----|----------------------|-----|-------------------------|
| B | Boiler | wm | Washing machine space | f/f | Fridge freezer space | WFH | Working from home space |
| ST | Store | dw | Dishwasher space | W | Wardrobe space | ◀▶ | Dimension location |



DAVID WILSON HOMES

We are on the New Homes Quality Code register of registered developers. "We" refers to the Barratt Developments PLC group brands including Barratt London, Barratt Homes and David Wilson Homes. All images used are for illustrative purposes. These and the dimensions given are illustrative for this house type and individual properties may differ. Please check with your Sales Adviser in respect of individual properties. We give maximum dimensions within each room which includes areas of fixtures and fittings including fitted furniture. These dimensions should not be used for carpet or flooring sizes, appliance spaces or items of furniture. All images, photographs and dimensions are not intended to be relied upon for, nor to form part of, any contract unless specifically incorporated in writing into the contract.

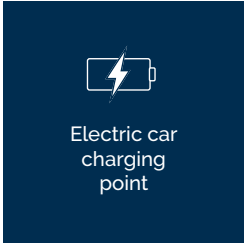
BDW003092/MAY23

THE THOMAS

FOUR BEDROOM HOME



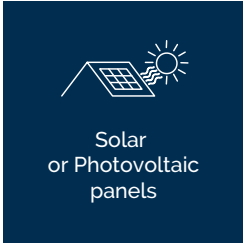
Highly-efficient insulation



Electric car charging point



Decentralised mechanical extract ventilation (d-MEV)



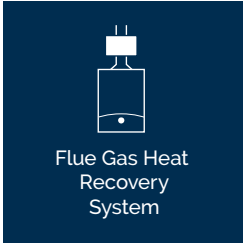
Solar or Photovoltaic panels



Waste Water Heat Recovery Systems

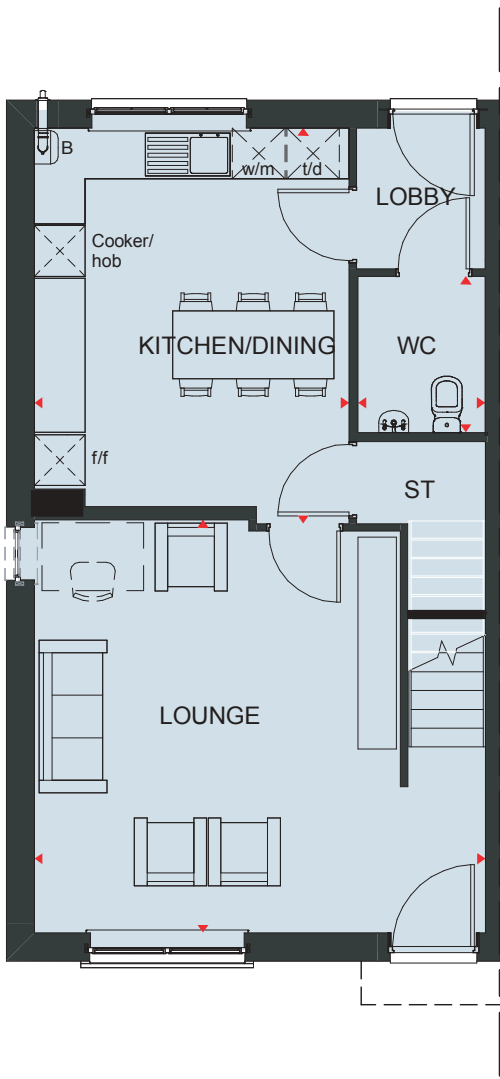


Argon-filled double-glazing



Flue Gas Heat Recovery System

*Only on combi-boiler plots

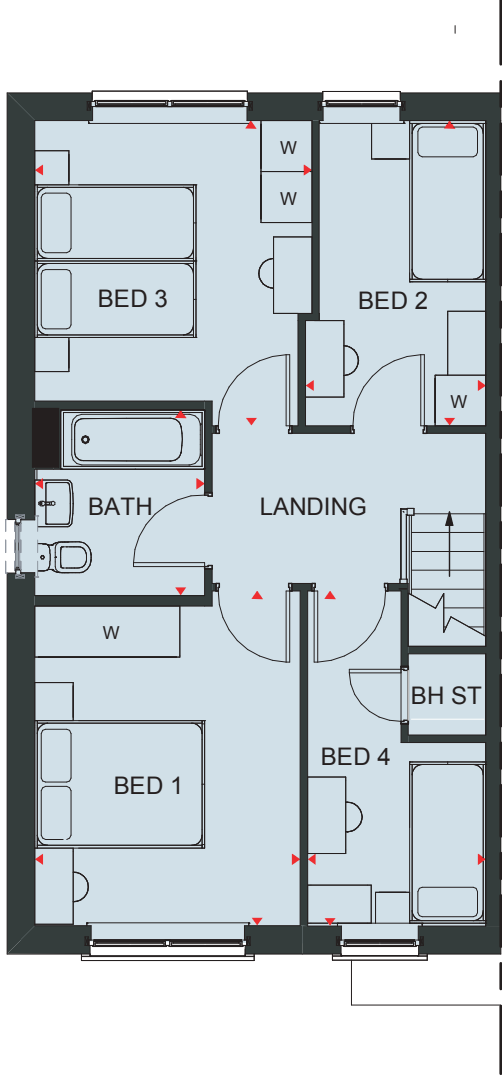


Ground Floor

| | | |
|----------------|----------------|-----------------|
| Lounge | 5318 x 4870 mm | 17' 5" x 16' 0" |
| Kitchen/dining | 3709 x 4665 mm | 12' 2" x 15' 4" |
| Store | 1521 x 1996 mm | 5' 0" x 6' 7" |
| WC | 1498 x 1841 mm | 4' 11" x 6' 0" |
| Lobby | 1516 x 1663 mm | 5' 0" x 5' 5" |

Key

| | | | | | | | |
|----|--------|-----|-----------------------|-----|-------------------------|----|--------------------|
| B | Boiler | wm | Washing machine space | dw | Dishwasher space | W | Wardrobe space |
| ST | Store | f/f | Fridge/freezer space | WFH | Working from home space | ◀▶ | Dimension location |



First Floor

| | | |
|------------|----------------|------------------|
| Bed 4 | 2103 x 3952 mm | 6' 11" x 13' 0" |
| Bed 1 | 3127 x 3947 mm | 10' 3" x 12' 11" |
| Bed 3 | 3266 x 3598 mm | 10' 9" x 11' 10" |
| Bed 2 | 2126 x 3598 mm | 7' 0" x 11' 10" |
| Bathroom | 2001 x 2185 mm | 6' 7" x 7' 2" |
| Landing | 3229 x 1770 mm | 10' 7" x 5' 10" |
| Bath store | 915 x 960 mm | 3' 0" x 3' 2" |



Scan here for more details



DAVID WILSON HOMES

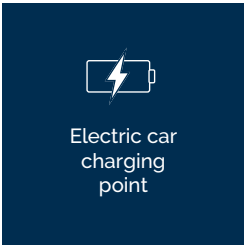
We are on the New Homes Quality Code register of registered developers. "We" refers to the Barratt Developments PLC group brands including Barratt London, Barratt Homes and David Wilson Homes. All images used are for illustrative purposes. These and the dimensions given are illustrative for this house type and individual properties may differ. Please check with your Sales Adviser in respect of individual properties. We give maximum dimensions within each room which includes areas of fixtures and fittings including fitted furniture. These dimensions should not be used for carpet or flooring sizes, appliance spaces or items of furniture. All images, photographs and dimensions are not intended to be relied upon for, nor to form part of, any contract unless specifically incorporated in writing into the contract.

GREENWOOD

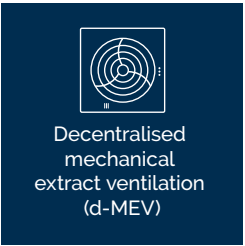
THREE BEDROOM HOME



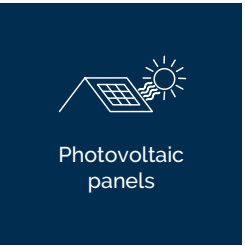
Highly-efficient insulation



Electric car charging point



Decentralised mechanical extract ventilation (d-MEV)



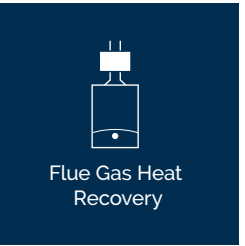
Photovoltaic panels



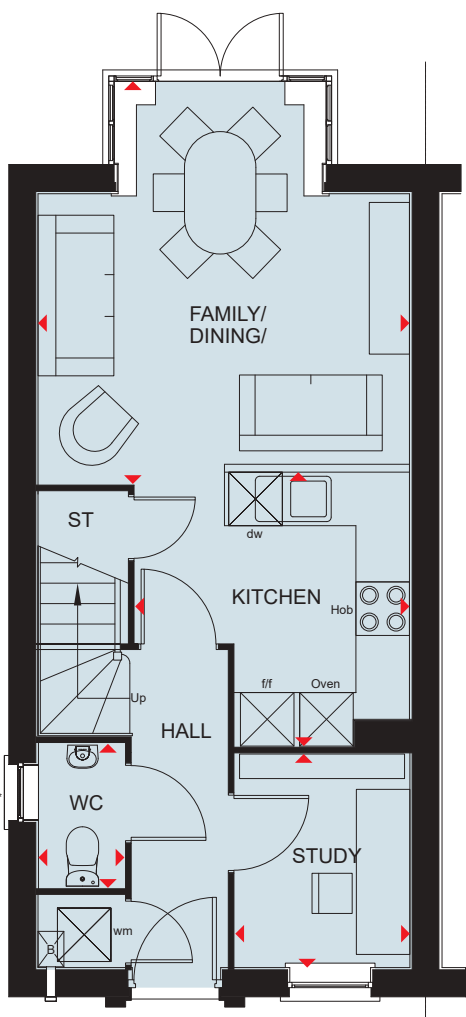
Waste Water Heat Recovery Systems



Argon-filled double-glazing

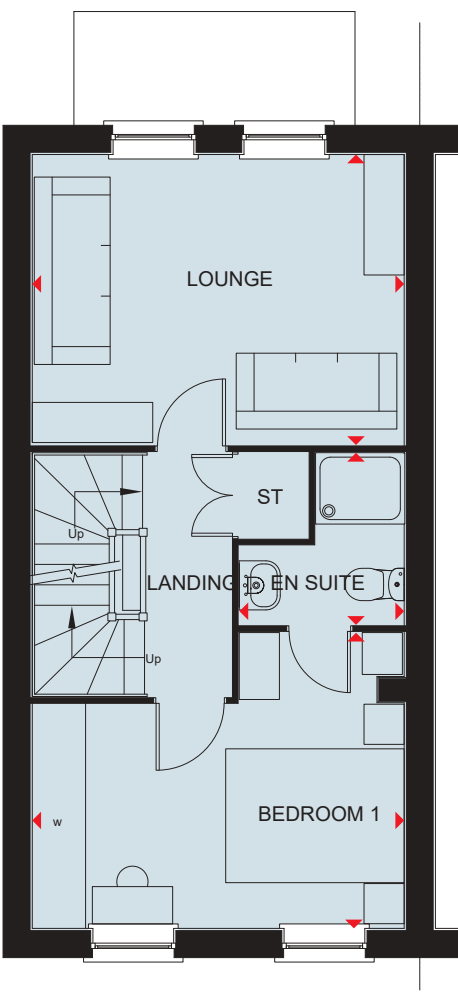


Flue Gas Heat Recovery

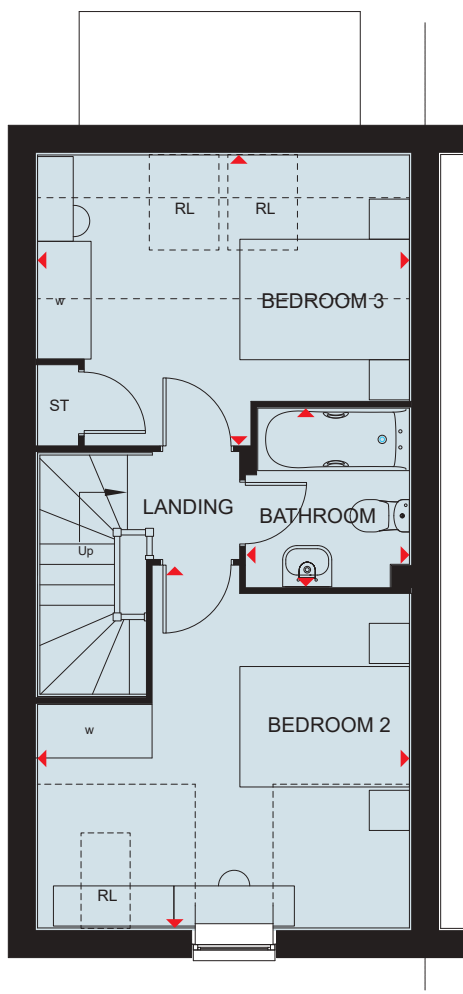


| Ground Floor | | |
|---------------|----------------|----------------|
| Family/Dining | 4513 x 4163 mm | 14'10" x 13'8" |
| Kitchen | 3074 x 3070 mm | 10'1" x 10'1" |
| Study | 2394 x 1960 mm | 7'10" x 6'5" |
| WC | 1614 x 963 mm | 5'4" x 3'2" |

* WC window to be included where plotting conditions allow



| First Floor | | |
|-------------|----------------|----------------|
| Lounge | 4168 x 3253 mm | 13'8" x 10'8" |
| Bedroom 1 | 4168 x 3316 mm | 13'8" x 10'10" |
| En Suite | 1928 x 1848 mm | 6'4" x 6'1" |



| Second Floor | | |
|--------------|-----------------|---------------|
| Bedroom 2 | 4168 x 4054* mm | 13'8" x 13'4" |
| Bedroom 3 | 4168 x 3248* mm | 13'8" x 10'8" |
| Bathroom | 2001 x 1827 mm | 6'7" x 6'0" |

* Overall floor dimension includes lowered ceiling areas

Key

| | | | | | | | | | |
|----|--------|----|-----------------------|-----|----------------------|----|----------------|----|--------------------|
| B | Boiler | wm | Washing machine space | f/f | Fridge freezer space | W | Wardrobe space | ◀▶ | Dimension location |
| ST | Store | dw | Dishwasher space | td | Tumble dryer space | RL | Rooflight | | |



DAVID WILSON HOMES

We are on the New Homes Quality Code register of registered developers. "We" refers to the Barratt Developments PLC group brands including Barratt London, Barratt Homes and David Wilson Homes. All images used are for illustrative purposes. The images and the dimensions given are illustrative for this house type and individual properties may differ. Please check with your Sales Adviser in respect of individual properties. We give maximum dimensions within each room which includes areas of fixtures and fittings including fitted furniture. These dimensions should not be used for carpet or flooring sizes, appliance spaces or items of furniture. All images, photographs, dimensions and energy efficiency features depicted are not intended to be relied upon for, nor to form part of, any contract unless specifically incorporated in writing into the contract.

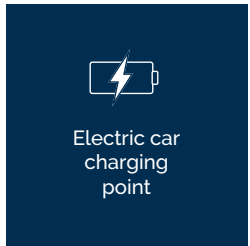
BDW003839/OCT23

HADLEY

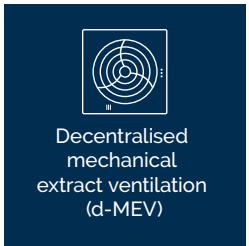
THREE BEDROOM END OR DETACHED HOME



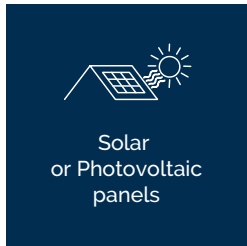
Highly-efficient insulation



Electric car charging point



Decentralised mechanical extract ventilation (d-MEV)



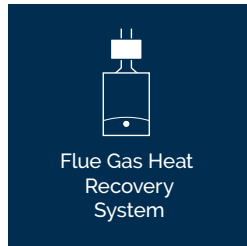
Solar or Photovoltaic panels



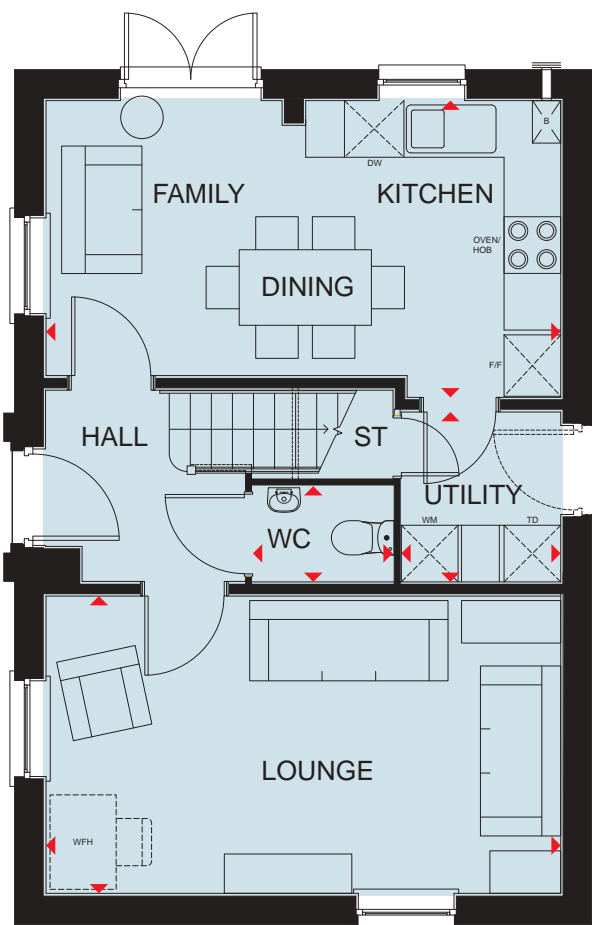
Waste Water Heat Recovery Systems



Argon-filled double-glazing



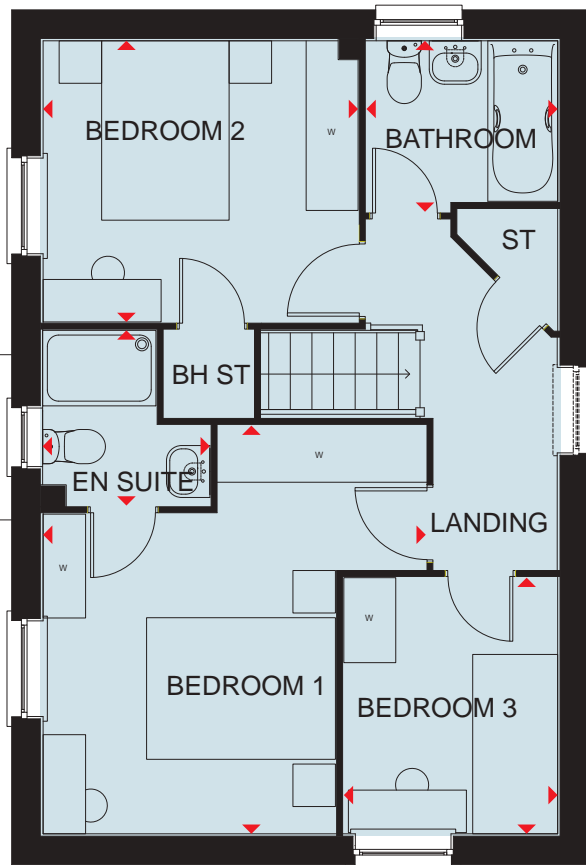
Flue Gas Heat Recovery System



* Optional door please refer to sales advisor

Ground Floor

| | | |
|-----------------------|----------------|----------------|
| Lounge | 5450 x 3148 mm | 17'11" x 10'4" |
| Kitchen/Family/Dining | 5450 x 3143 mm | 17'11" x 10'4" |
| Utility | 1799 x 1688 mm | 5'11" x 5'6" |
| WC | 1480 x 1014 mm | 4'10" x 3'4" |



* Optional window please refer to sales advisor

First Floor

| | | |
|-----------|----------------|---------------|
| Bedroom 1 | 4324 x 4053 mm | 14'2" x 13'3" |
| En Suite | 1856 x 1771 mm | 6'1" x 5'9" |
| Bedroom 2 | 3336 x 2978 mm | 11'3" x 9'9" |
| Bedroom 3 | 2713 x 2265 mm | 8'11" x 7'5" |
| Bathroom | 2025 x 1811 mm | 6'8" x 6'0" |

Key

| | | | | | | | | | |
|----|--------|-----|-----------------------|----|------------------|-----|-------------------------|----|--------------------|
| B | Boiler | wm | Washing machine space | dw | Dishwasher space | W | Wardrobe space | ◀▶ | Dimension location |
| ST | Store | f/f | Fridge/freezer space | TD | Tumble dryer | WFH | Working from home space | | |



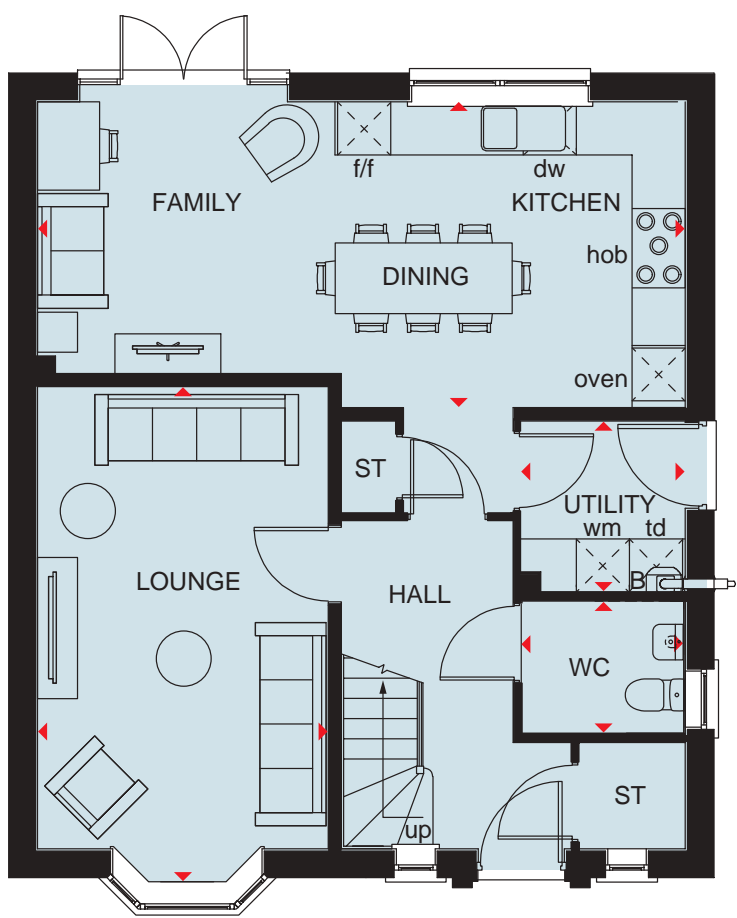
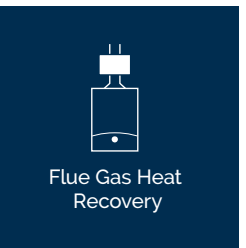
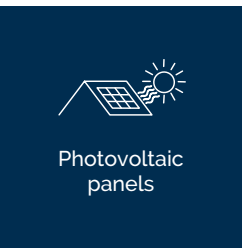
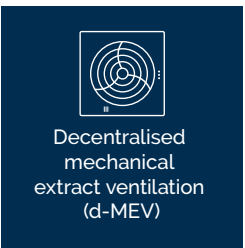
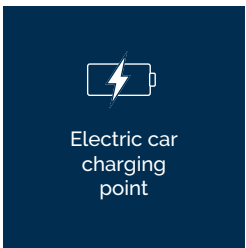
DAVID WILSON HOMES

We are on the New Homes Quality Code register of registered developers. "We" refers to the Barratt Developments PLC group brands including Barratt London, Barratt Homes and David Wilson Homes. All images used are for illustrative purposes. These and the dimensions given are illustrative for this house type and individual properties may differ. Please check with your Sales Adviser in respect of individual properties. We give maximum dimensions within each room which includes areas of fixtures and fittings including fitted furniture. These dimensions should not be used for carpet or flooring sizes, appliance spaces or items of furniture. All images, photographs and dimensions are not intended to be relied upon for, nor to form part of, any contract unless specifically incorporated in writing into the contract.

BDW002775/APR23

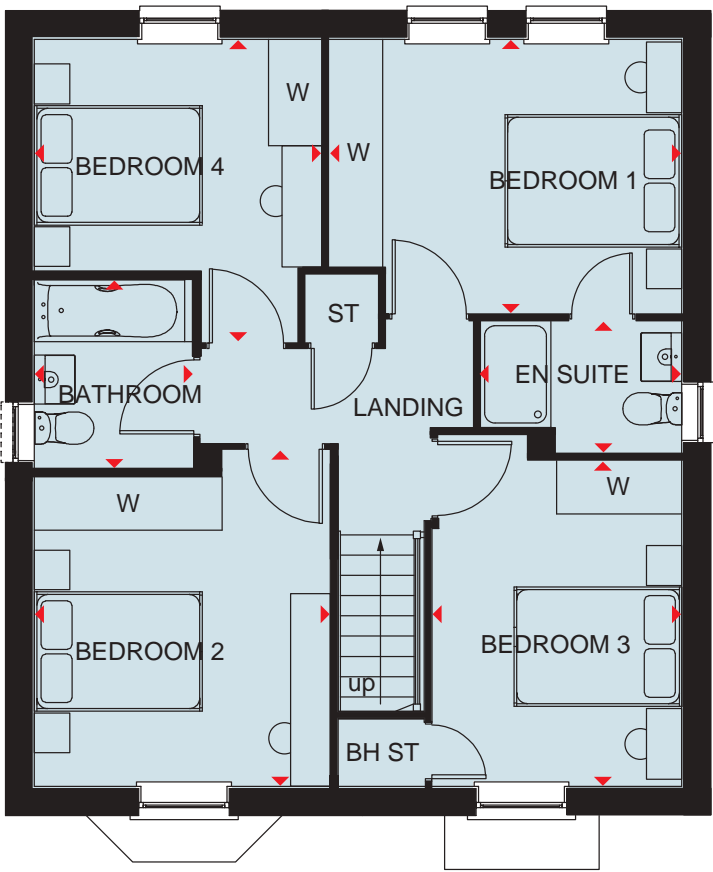
WOODLARK

FOUR BEDROOM HOME



Ground Floor

| | | |
|-----------------------|----------------|---------------|
| Lounge | 3285 x 5848 mm | 10'9" x 19'2" |
| Kitchen/Family/Dining | 7323 x 3460 mm | 24' x 11'4" |
| Utility | 1859 x 1932 mm | 6'1" x 6'4" |
| WC | 1842 x 1495 mm | 6'1" x 4'10" |



First Floor

| | | |
|-----------|----------------|----------------|
| Bedroom 1 | 3985 x 3112 mm | 13'1" x 10'2" |
| En Suite | 2281 x 1488 mm | 7'5" x 4'10" |
| Bedroom 2 | 3347 x 3801 mm | 10'11" x 12'5" |
| Bedroom 3 | 3250 x 3421 mm | 10'7" x 11'2" |
| Bathroom | 1782 x 2125 mm | 5'10" x 6'11" |

Key

| | | | | | | | | | |
|----|--------|-------|----------------------|----|-----------------------|----|--------------------|----|--------------------|
| B | Boiler | BH ST | Bulkhead store | wm | Washing machine space | td | Tumble dryer space | ◀▶ | Dimension location |
| ST | Store | f/f | Fridge/freezer space | dw | Dishwasher space | W | Wardrobe space | | |



DAVID WILSON HOMES

We are on the New Homes Quality Code register of registered developers. "We" refers to the Barratt Developments PLC group brands including Barratt London, Barratt Homes and David Wilson Homes. All images used are for illustrative purposes. These and the dimensions given are illustrative for this house type and individual properties may differ. Please check with your Sales Adviser in respect of individual properties. We give maximum dimensions within each room which includes areas of fixtures and fittings including fitted furniture. These dimensions should not be used for carpet or flooring sizes, appliance spaces or items of furniture. All images, photographs and dimensions are not intended to be relied upon for, nor to form part of, any contract unless specifically incorporated in writing into the contract.

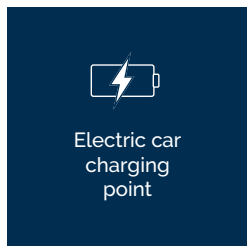
BDW003474/AUGL23

BRADGATE

FOUR BEDROOM DETACHED HOME



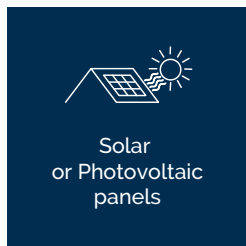
Highly-efficient insulation



Electric car charging point



Decentralised mechanical extract ventilation (d-MEV)



Solar or Photovoltaic panels



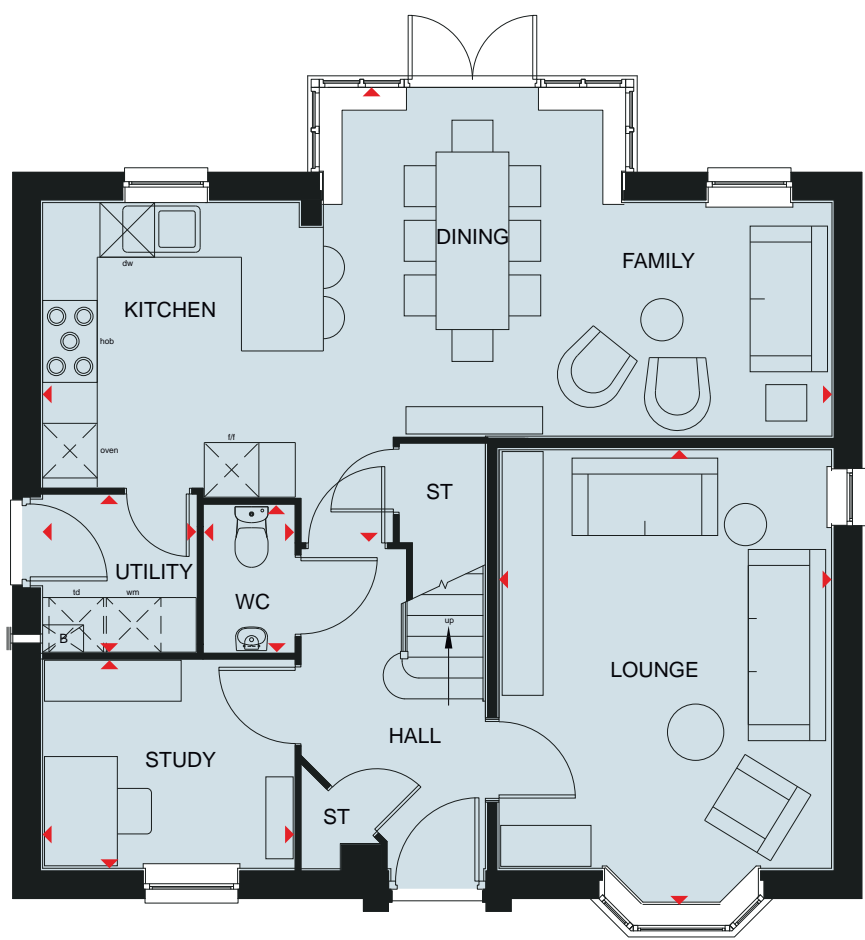
Waste Water Heat Recovery Systems



Argon-filled double-glazing



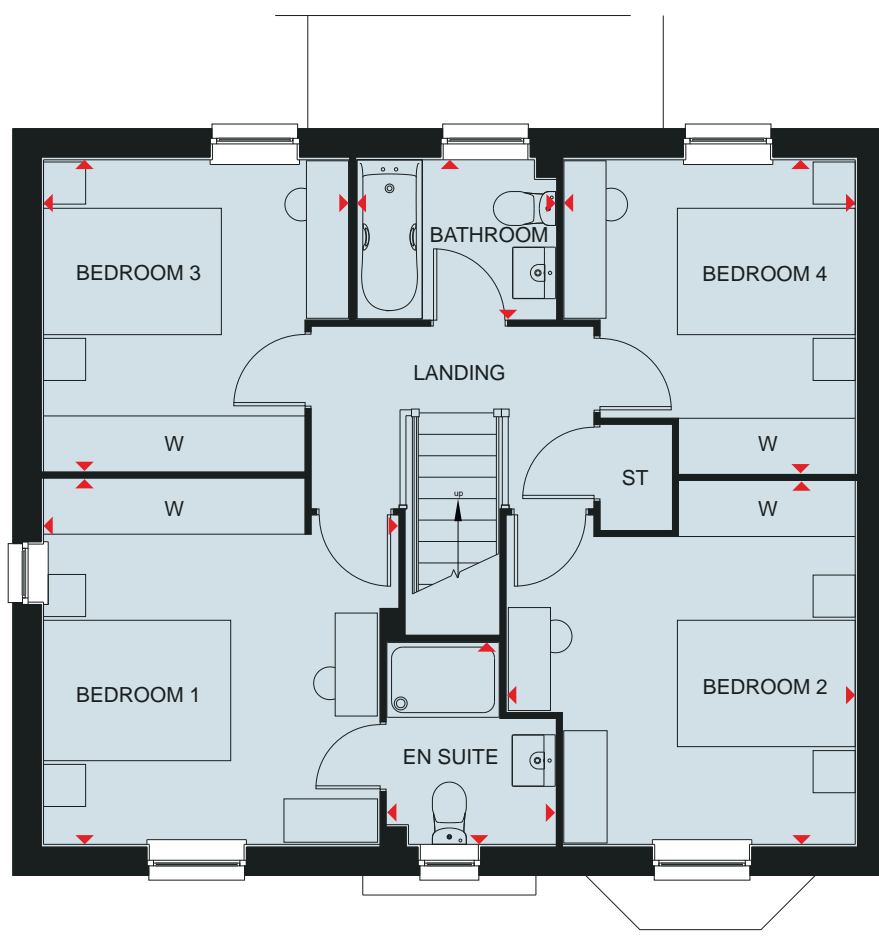
Flue Gas Heat Recovery System



Ground Floor

| | | |
|-----------------------|----------------|---------------|
| Lounge | 4994 x 3653 mm | 16'5" x 12'0" |
| Kitchen/Dining/Family | 8673 x 4992 mm | 28'5" x 16'5" |
| Study | 2762 x 2285 mm | 9'1" x 7'6" |
| Utility | 1688 x 1725 mm | 5'6" x 5'8" |
| WC | 1614 x 987 mm | 5'4" x 3'3" |

* Window may be omitted on certain plots. Speak to a Sales Adviser for details on individual plots.



First Floor

| | | |
|-----------|----------------|----------------|
| Bedroom 1 | 3901 x 3786 mm | 12'10" x 12'5" |
| En Suite | 2157 x 1700 mm | 7'1" x 5'11" |
| Bedroom 2 | 3720 x 3876 mm | 12'2" x 12'9" |
| Bedroom 3 | 3324 x 3259 mm | 10'11" x 10'8" |
| Bedroom 4 | 3349 x 3113 mm | 11'0" x 10'3" |
| Bathroom | 2125 x 1700 mm | 7'0" x 5'7" |

Key

| | | | | | | | |
|----|--------|-----|----------------------|----|-----------------------|----|--------------------|
| B | Boiler | dw | Dishwasher space | wm | Washing machine space | W | Wardrobe space |
| ST | Store | f/f | Fridge/freezer space | td | Tumble dryer space | ◀▶ | Dimension location |



DAVID WILSON HOMES

We are on the New Homes Quality Code register of registered developers. "We" refers to the Barratt Developments PLC group brands including Barratt London, Barratt Homes and David Wilson Homes. All images used are for illustrative purposes. These and the dimensions given are illustrative for this house type and individual properties may differ. Please check with your Sales Adviser in respect of individual properties. We give maximum dimensions within each room which includes areas of fixtures and fittings including fitted furniture. These dimensions should not be used for carpet or flooring sizes, appliance spaces or items of furniture. All images, photographs and dimensions are not intended to be relied upon for, nor to form part of, any contract unless specifically incorporated in writing into the contract.

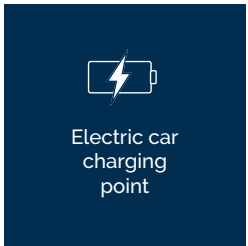
BDW003090/MAY23

PEREGRINE

FOUR BEDROOM HOME



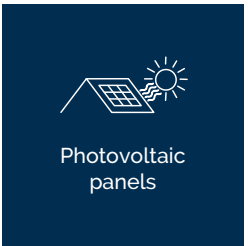
Highly-efficient insulation



Electric car charging point



Decentralised mechanical extract ventilation (d-MEV)



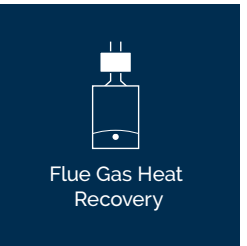
Photovoltaic panels



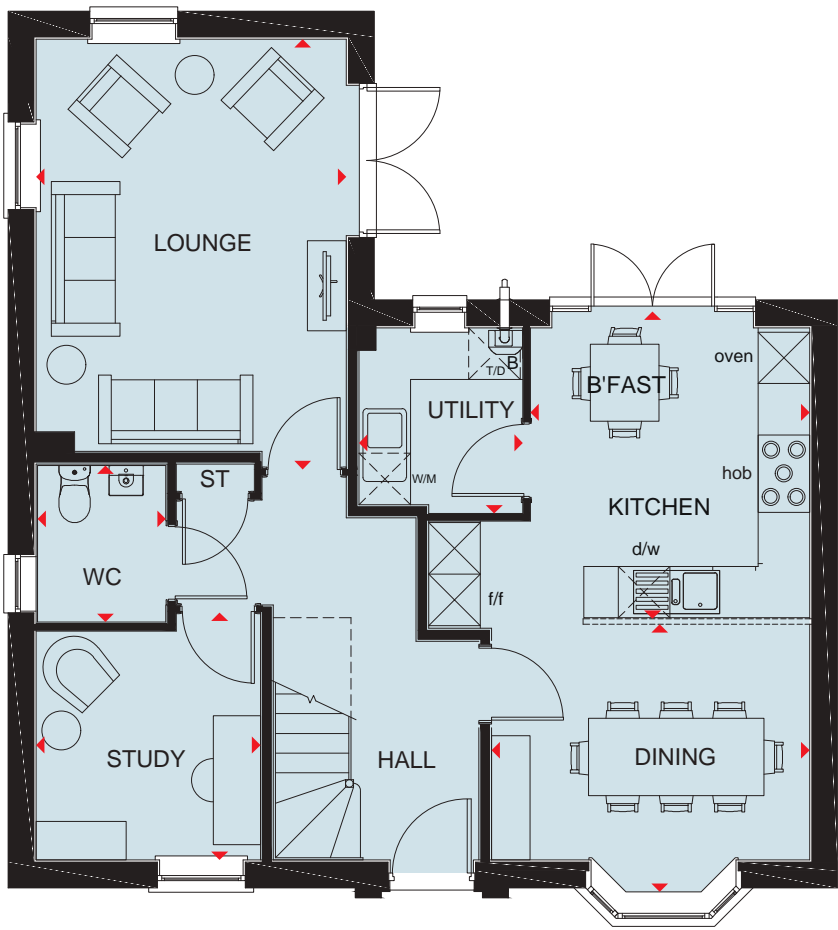
Waste Water Heat Recovery Systems



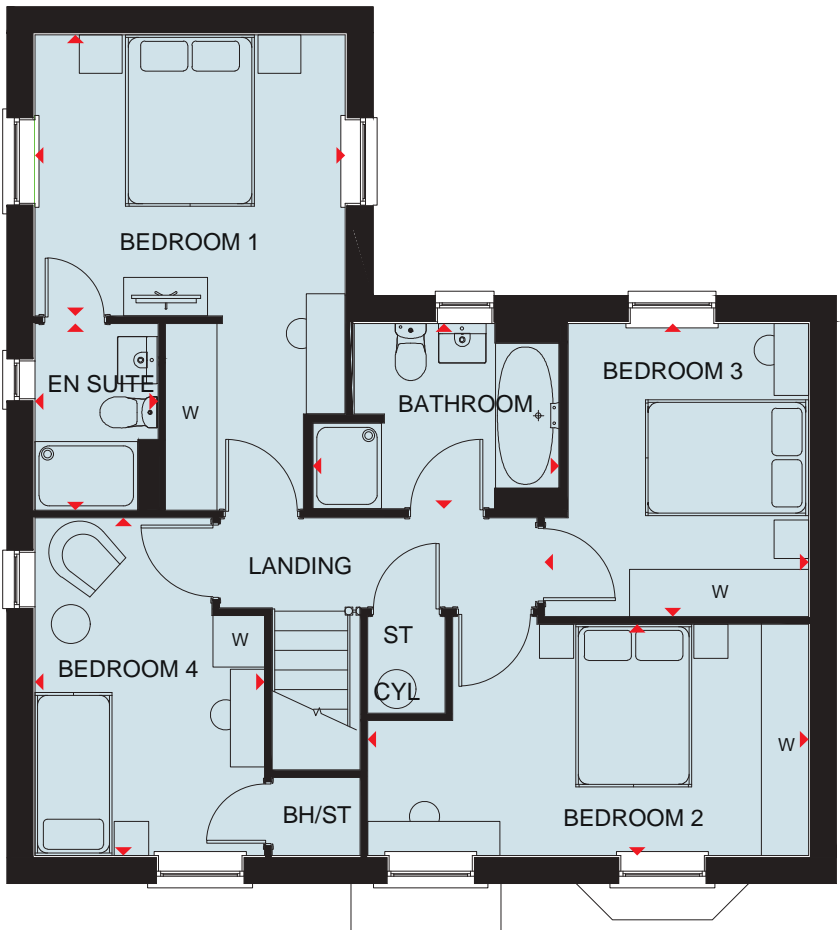
Argon-filled double-glazing



Flue Gas Heat Recovery



| Ground Floor | | |
|----------------|---------------|----------------|
| Lounge | 3615 x 5016mm | 11'10" x 16'5" |
| Kitchen/B'Fast | 3255 x 3584mm | 10'8" x 11'9" |
| Utility | 1907 x 2164mm | 6'3" x 7'0" |
| Dining | 3706 x 3120mm | 12'0" x 10'2" |
| Study | 2615 x 2885mm | 8'6" x 9'5" |
| WC | 1495 x 1825mm | 4'10" x 5'11" |



| First Floor | | |
|-------------|---------------|----------------|
| Bedroom 1 | 3615 x 3277mm | 11'10" x 10'9" |
| En Suite | 1435 x 2190mm | 4'8" x 7'2" |
| Bathroom | 2872 x 2160mm | 9'5" x 7'0" |
| Bedroom 2 | 5137 x 2700mm | 16'10" x 8'10" |
| Bedroom 3 | 3077 x 3416mm | 10'0" x 11'2" |
| Bedroom 4 | 2677 x 3938mm | 8'9" x 12'11" |

Key

| | | | | | | | | | |
|----|--------|-------|----------------------|----|-----------------------|-----|-------------------------|----|--------------------|
| B | Boiler | BH ST | Bulkhead store | wm | Washing machine space | td | Tumble dryer space | w | Wardrobe space |
| ST | Store | f/f | Fridge/freezer space | dw | Dishwasher space | WFH | Working from home space | ◀▶ | Dimension location |



DAVID WILSON HOMES

We are on the New Homes Quality Code register of registered developers. "We" refers to the Barratt Developments PLC group brands including Barratt London, Barratt Homes and David Wilson Homes. All images used are for illustrative purposes. These and the dimensions given are illustrative for this house type and individual properties may differ. Please check with your Sales Adviser in respect of individual properties. We give maximum dimensions within each room which includes areas of fixtures and fittings including fitted furniture. These dimensions should not be used for carpet or flooring sizes, appliance spaces or items of furniture. All images, photographs and dimensions are not intended to be relied upon for, nor to form part of, any contract unless specifically incorporated in writing into the contract.

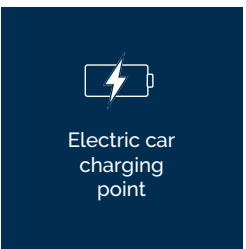
BDW003473/AUG23

SKYLARK

FOUR BEDROOM HOME



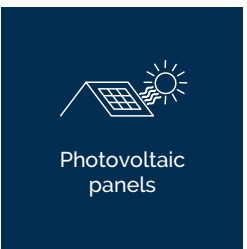
Highly-efficient insulation



Electric car charging point



Decentralised mechanical extract ventilation (d-MEV)



Photovoltaic panels



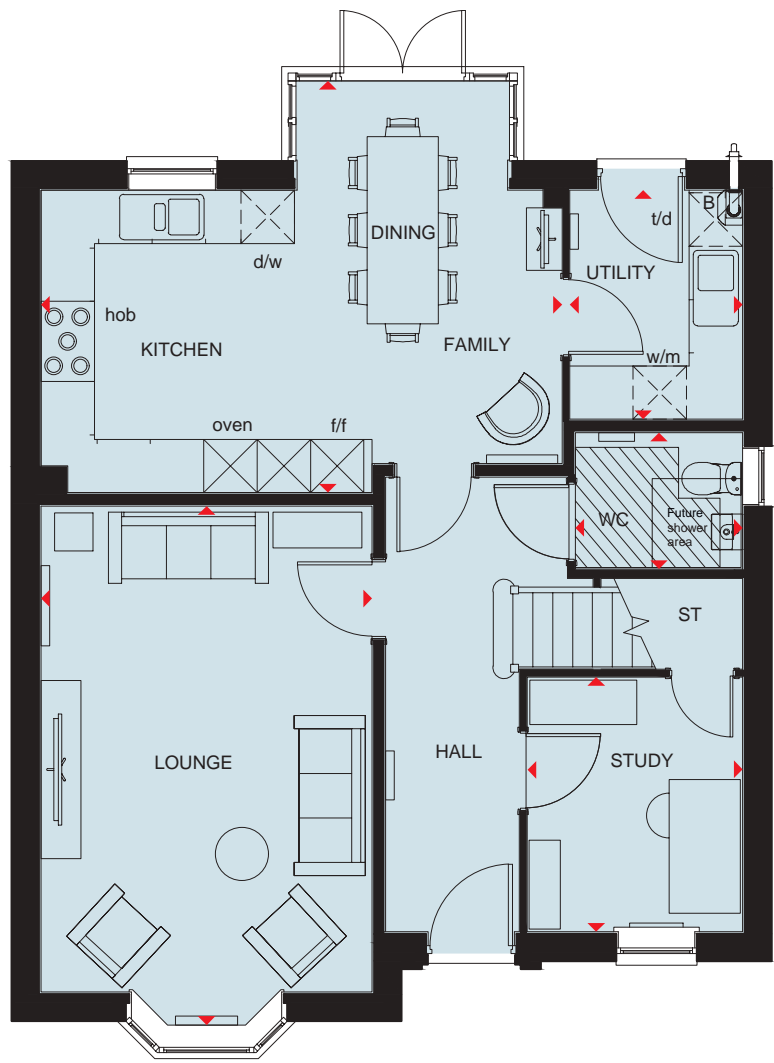
Waste Water Heat Recovery Systems



Argon-filled double-glazing

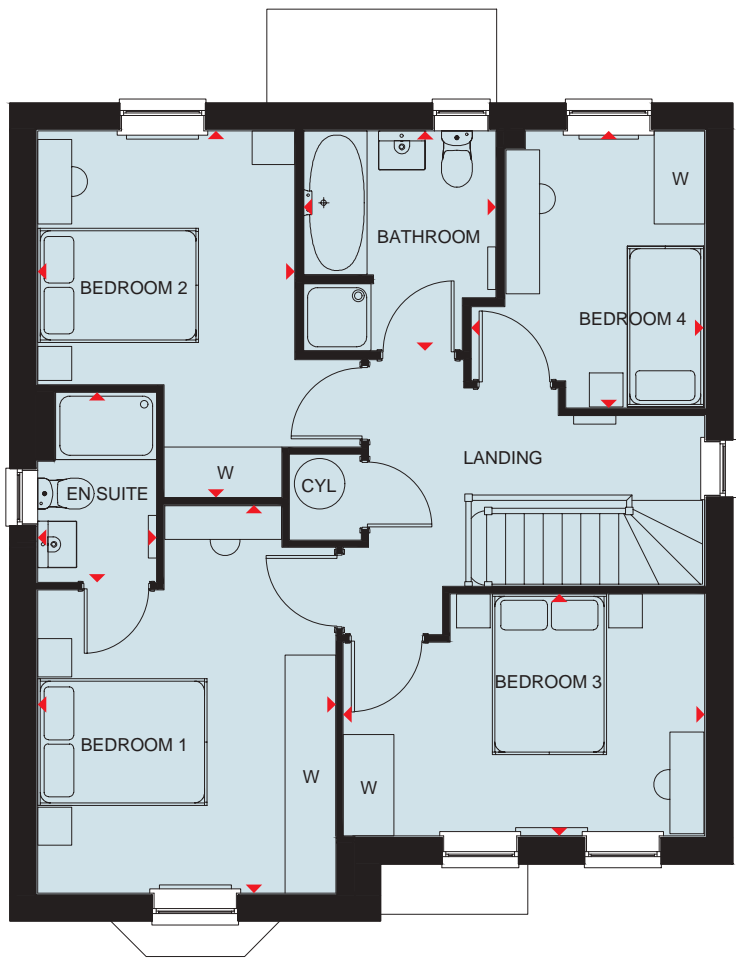


Flue Gas Heat Recovery



Ground Floor

| | | |
|------------------------|----------------|---------------|
| Lounge/ Kitchen/Dining | 3723 x 5832 mm | 12'2" x 19'1" |
| Dining | 5857 x 4628 mm | 18'2" x 15'2" |
| Utility | 1940 x 2575 mm | 6'4" x 8'5" |
| Study | 2422 x 2861 mm | 7'11" x 9'4" |
| WC | 1878 x 1535 mm | 6'1" x 5'0" |



First Floor

| | | |
|-----------|----------------|---------------|
| Bedroom 1 | 3523 x 4586 mm | 11'6" x 15'0" |
| En Suite | 1406 x 2250 mm | 4'7" x 7'4" |
| Bathroom | 2275 x 2599 mm | 7'5" x 8'6" |
| Bedroom 2 | 3036 x 4336 mm | 9'11" x 14'2" |
| Bedroom 3 | 4275 x 2861 mm | 14'0" x 9'4" |
| Bedroom 4 | 2746 x 3278 mm | 9'0" x 10'9" |

Key

| | | | | | | | |
|----|--------|-----|-----------------------|----|--------------------|----|--------------------|
| B | Boiler | f/f | Fridge/freezer space | dw | Dishwasher space | w | Wardrobe space |
| ST | Store | wm | Washing machine space | td | Tumble dryer space | ◀▶ | Dimension location |



DAVID WILSON HOMES

We are on the New Homes Quality Code register of registered developers. "We" refers to the Barratt Developments PLC group brands including Barratt London, Barratt Homes and David Wilson Homes. All images used are for illustrative purposes. These and the dimensions given are illustrative for this house type and individual properties may differ. Please check with your Sales Adviser in respect of individual properties. We give maximum dimensions within each room which includes areas of fixtures and fittings including fitted furniture. These dimensions should not be used for carpet or flooring sizes, appliance spaces or items of furniture. All images, photographs and dimensions are not intended to be relied upon for, nor to form part of, any contract unless specifically incorporated in writing into the contract.

BDW003475/AUG23