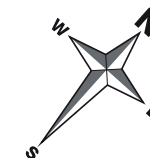




THE MEADOWS AT ABBEY FIELDS



THE MEADOWS AT ABBEY FIELDS



Existing Farmland

- The Mallow 1 Bedroom Home
- The Lewis 2 Bedroom Home
- The Hadley 3 Bedroom Home
- The Cannington 3 Bedroom Home
- The Cannington 3 Bedroom Home Special
- The Parkin 4 Bedroom Home
- The Parkin 4 Bedroom Home Special
- The Hollinwood 4 Bedroom Home
- The Ashington 4 Bedroom Home
- The Bayswater 4 Bedroom Home
- The Kirkdale 4 Bedroom Home
- The Hertford 4 Bedroom Home
- The Meriden 4 Bedroom Home
- The Avondale 4 Bedroom Home
- The Winstone 4 Bedroom Home
- The Manning 5 Bedroom Home
- Affordable Housing

BCP Bin Collection Point

S/S Substation

V Visitor Parking

- Trees
- Grassland
- Meadow Grassland
- Paths
- Play Area
- Timber Picnic Table
- Bench



dwh.co.uk



DAVID WILSON HOMES
WHERE QUALITY LIVES

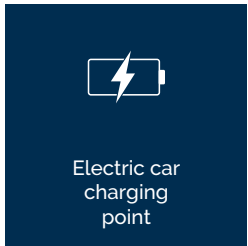
Images and development layouts are for illustrative purposes, should be used for general guidance only and are not intended to form part of any contract or warranty unless specifically incorporated in writing. Development layouts including house types and tenures, the location of affordable housing, parking arrangements, play areas, landscaping and public open spaces are subject to change including any changes required due to change in planning permission. The Meadows at Abbey Fields is a marketing name only and may not be the designated postal address, which may be determined by The Post Office.

MALLOW HOUSE

ONE BEDROOM HOME



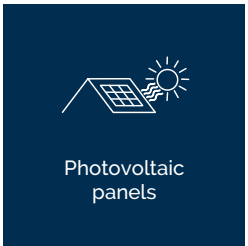
Highly-efficient insulation



Electric car charging point



Decentralised mechanical extract ventilation (d-MEV)



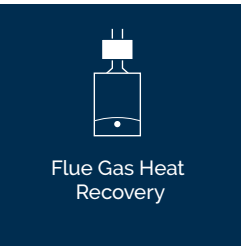
Photovoltaic panels



Waste Water Heat Recovery Systems

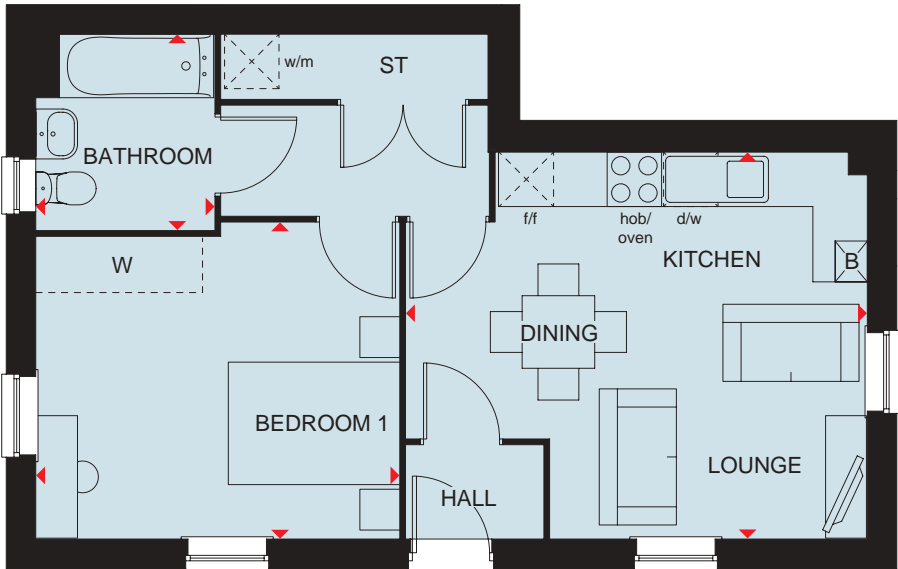


Argon-filled double-glazing



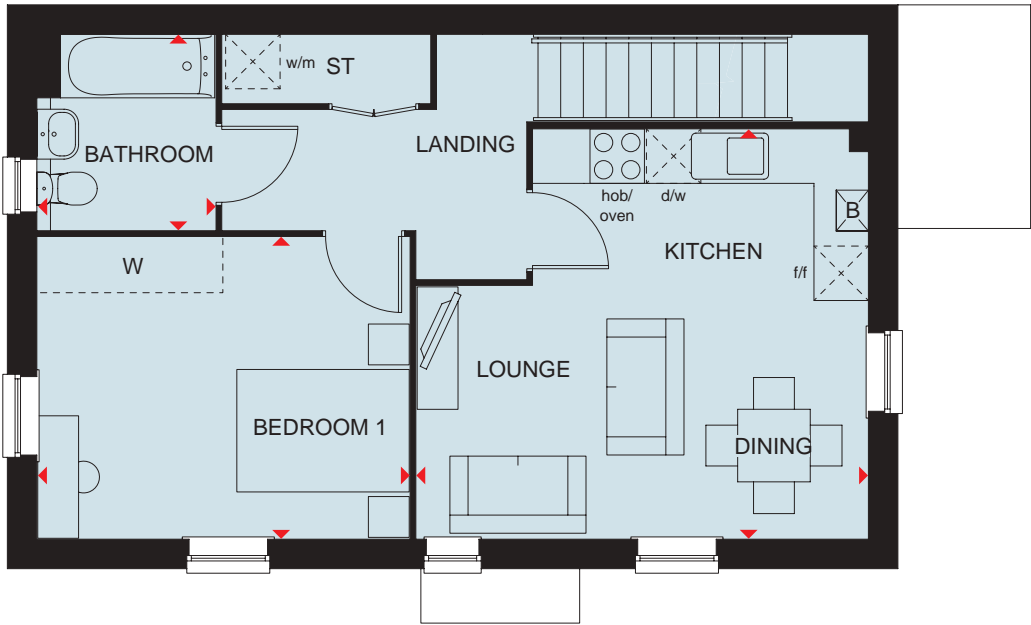
Flue Gas Heat Recovery

Features are plot specific. Please refer to working drawings.



Ground Floor (Plots 315 & 330)

| | | |
|------------------------|----------------|---------------|
| Kitchen/ Lounge/Dining | 3450 x 5115 mm | 11'3" x 16'7" |
| Bedroom 1 | 3362 x 4037 mm | 11'0" x 13'2" |
| Bathroom | 2191 x 2000 mm | 7'1" x 6'5" |



First Floor (Plots 314 & 331)

| | | |
|------------------------|----------------|---------------|
| Kitchen/ Lounge/Dining | 3992 x 5013 mm | 13'0" x 16'4" |
| Bedroom 1 | 3362 x 4139 mm | 11'0" x 13'5" |
| Bathroom | 2190 x 4139 mm | 7'1" x 6'5" |

Key

| | | | | | | | | | |
|----|--------|-------|----------------------|----|-----------------------|-----|-------------------------|----|--------------------|
| B | Boiler | BH ST | Bulkhead store | wm | Washing machine space | td | Tumble dryer space | w | Wardrobe space |
| ST | Store | f/f | Fridge/freezer space | dw | Dishwasher space | WFH | Working from home space | ◀▶ | Dimension location |

A3 specification



DAVID WILSON HOMES

We are on the New Homes Quality Code register of registered developers. "We" refers to the Barratt Developments PLC group brands including Barratt London, Barratt Homes and David Wilson Homes. All images used are for illustrative purposes. These and the dimensions given are illustrative for this house type and individual properties may differ. Please check with your Sales Adviser in respect of individual properties. We give maximum dimensions within each room which includes areas of fixtures and fittings including fitted furniture. These dimensions should not be used for carpet or flooring sizes, appliance spaces or items of furniture. All images, photographs and dimensions are not intended to be relied upon for, nor to form part of, any contract unless specifically incorporated in writing into the contract.

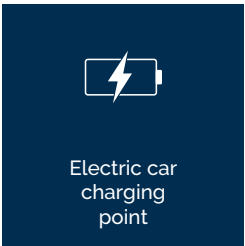
BDW004614/MAY24

LEWIS

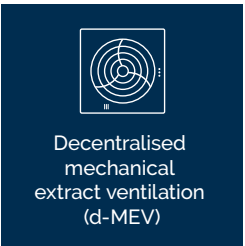
TWO BEDROOM HOME



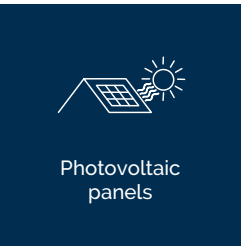
Highly-efficient insulation



Electric car charging point



Decentralised mechanical extract ventilation (d-MEV)



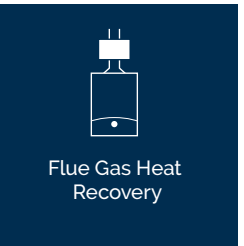
Photovoltaic panels



Waste Water Heat Recovery Systems

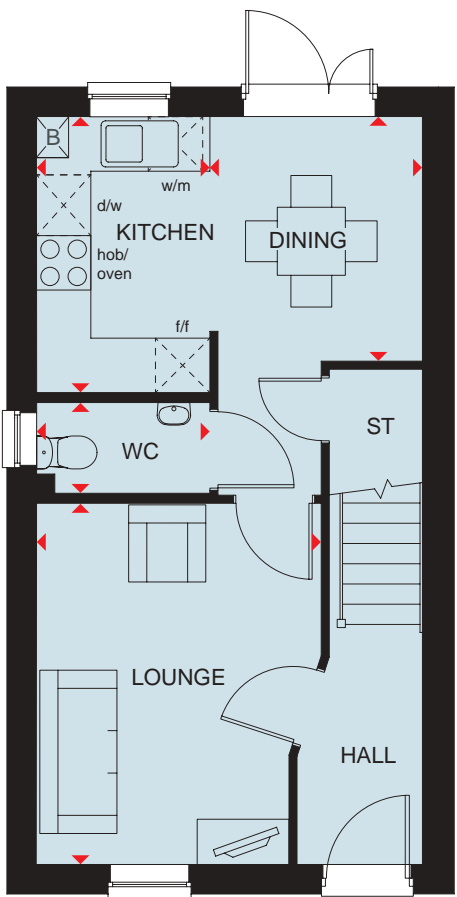


Argon-filled double-glazing

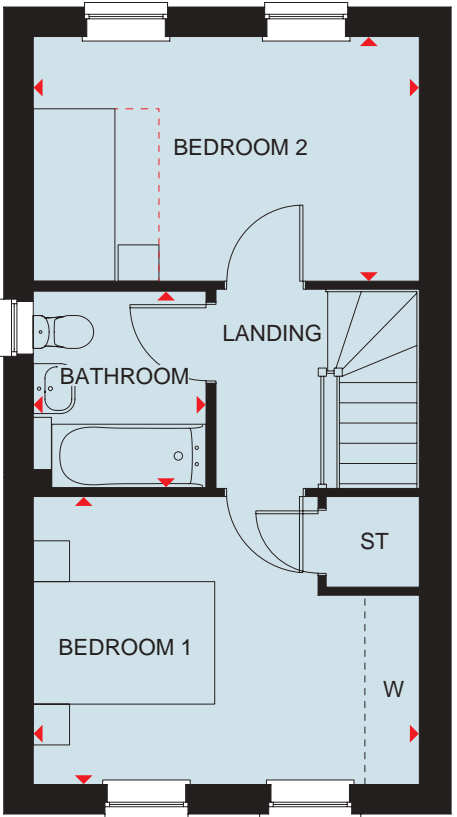


Flue Gas Heat Recovery

Features are plot specific. Please refer to working drawings.



| | | |
|---------------------|----------------|---------------|
| Ground Floor | | |
| Kitchen/Dining | 4305 x 3081 mm | 14'1" x 10'1" |
| Lounge | 2822 x 4020 mm | 9'2" x 13'1" |
| WC | 1950 x 1068 mm | 6'3" x 3'5" |



| | | |
|--------------------|----------------|---------------|
| First Floor | | |
| Bedroom 1 | 4305 x 3213 mm | 14'1" x 10'5" |
| Bedroom 2 | 4303 x 2735 mm | 14'1" x 8'9" |
| Bathroom | 1942 x 2180 mm | 6'3" x 7'1" |

Key

| | | | | | | | | | | |
|----|--------|-----|----|----------------------|----|-----------------------|-----|-------------------------|----|--------------------|
| B | Boiler | BH | ST | Bulkhead store | wm | Washing machine space | td | Tumble dryer space | w | Wardrobe space |
| ST | Store | f/f | | Fridge/freezer space | dw | Dishwasher space | WFH | Working from home space | ◀▶ | Dimension location |

A3 specification



DAVID WILSON HOMES

HADLEY

THREE BEDROOM HOME



Highly-efficient insulation

Electric car charging point

Decentralised mechanical extract ventilation (d-MEV)

Photovoltaic panels

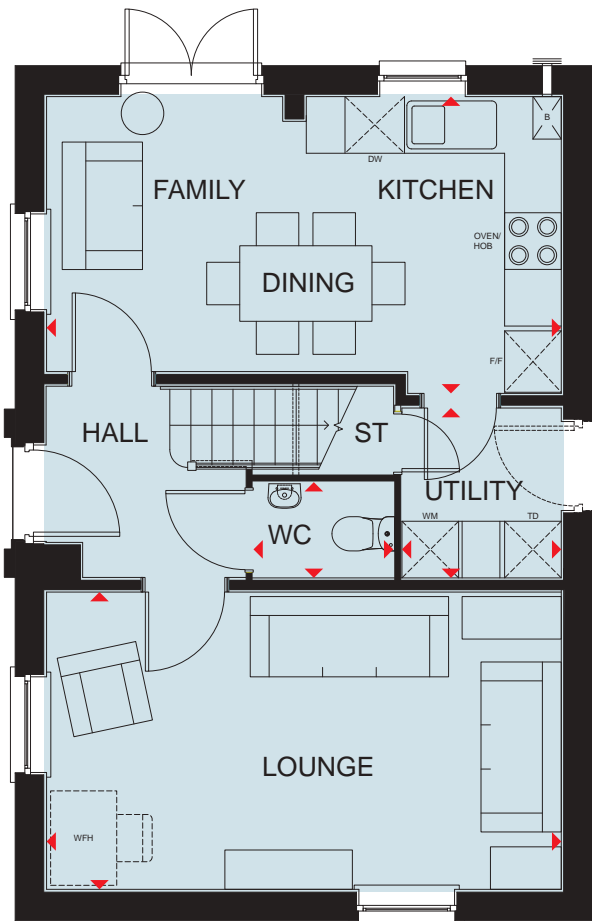
Waste Water Heat Recovery Systems

Argon-filled double-glazing

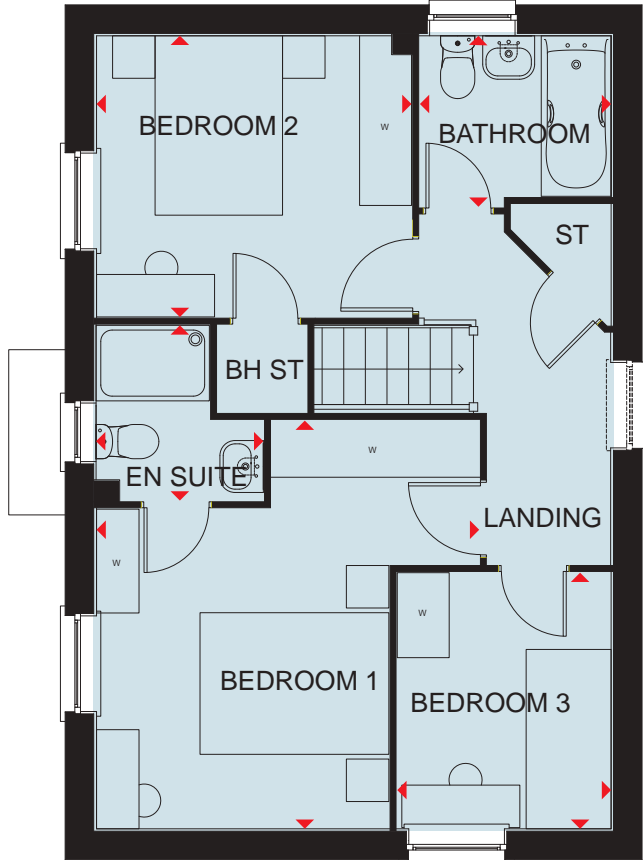
Flue Gas Heat Recovery System

Smart Thermostat

Features are plot specific. Please refer to working drawings.



* Optional door please refer to sales advisor



* Optional window please refer to sales advisor

Ground Floor

| | | |
|----------------|----------------|---------------|
| Kitchen/Dining | 5505 x 3193 mm | 18'0" x 10'5" |
| Utility | 1526 x 1854 mm | 5'0" x 6'0" |
| Lounge | 5505 x 3203 mm | 18'0" x 10'6" |
| WC | 1511 x 1089 mm | 4'11" x 3'6" |

First Floor

| | | |
|-----------|----------------|---------------|
| Bedroom 1 | 3139 x 3426 mm | 10'5" x 11'2" |
| En suite | 1443 x 1882 mm | 4'8" x 6'2" |
| Bedroom 2 | 3379 x 3016 mm | 11'1" x 9'10" |
| Bathroom | 2063 x 1738 mm | 6'8" x 5'8" |

Key

| | | | | | | | | | |
|----|--------|-----|-----------------------|----|------------------|-----|-------------------------|----|--------------------|
| B | Boiler | wm | Washing machine space | dw | Dishwasher space | W | Wardrobe space | ◀▶ | Dimension location |
| ST | Store | f/f | Fridge/freezer space | TD | Tumble dryer | WFH | Working from home space | | |

A3 specification.



DAVID WILSON HOMES

CANNINGTON

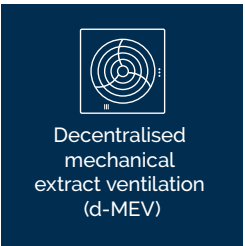
THREE BEDROOM HOME



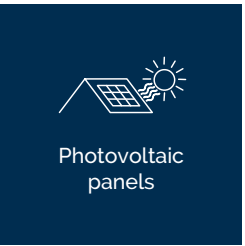
A/B EPC rating



Highly-efficient insulation



Decentralised mechanical extract ventilation (d-MEV)



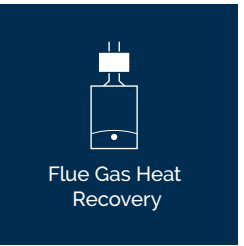
Photovoltaic panels



Waste Water Heat Recovery Systems

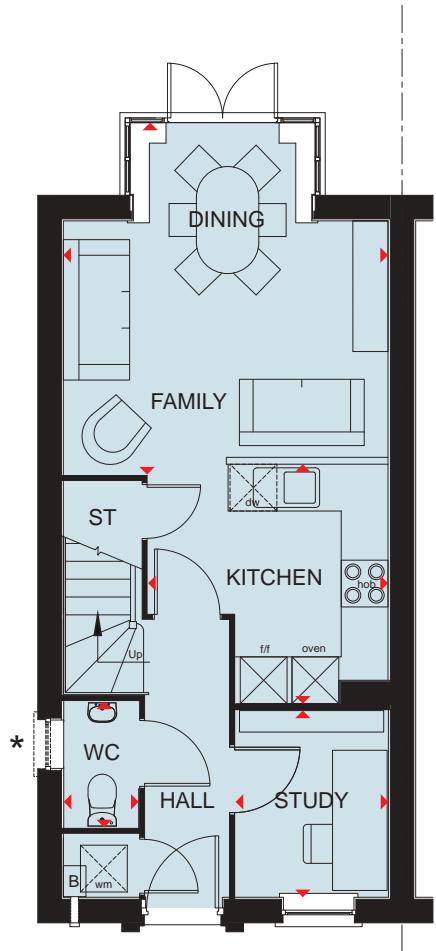


Argon-filled double-glazing



Flue Gas Heat Recovery

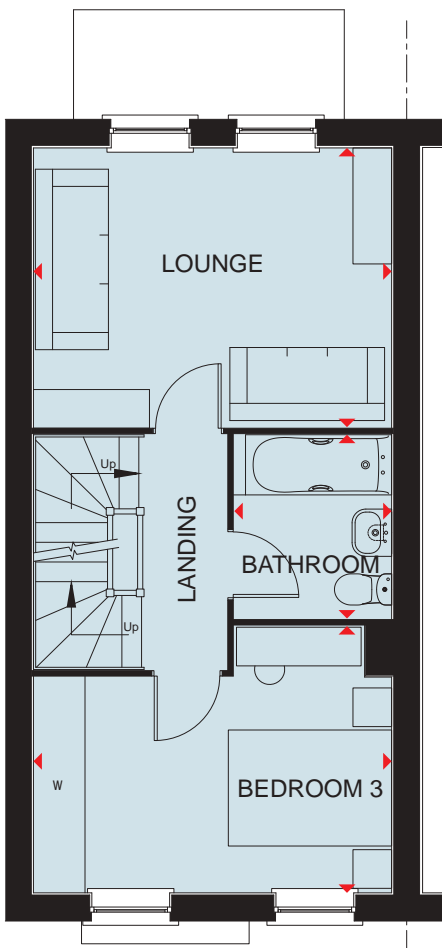
Features are plot specific. Please refer to working drawings.



Ground Floor

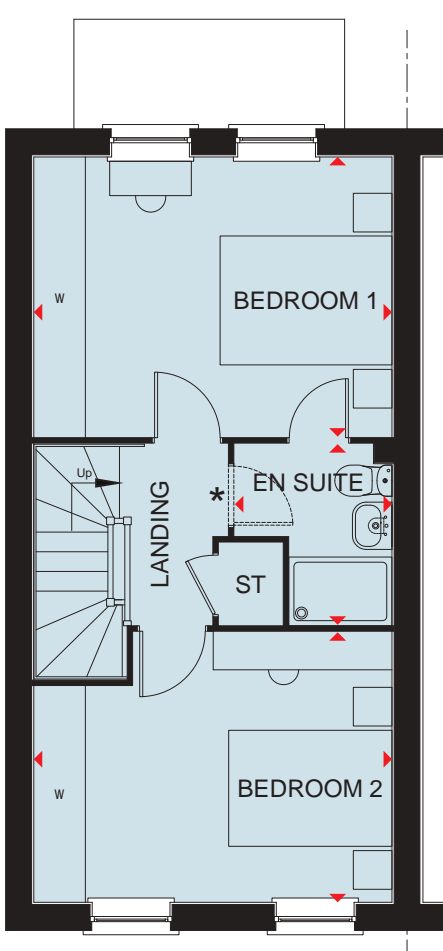
| | | |
|---------------|----------------|----------------|
| Kitchen | 2090 x 3096 mm | 6'10" x 10'1" |
| Family/Dining | 4220 x 3070 mm | 13'10" x 10'0" |
| Study | 1997 x 2432 mm | 6'6" x 7'11" |
| WC | 1006 x 1639 mm | 3'3" x 5'4" |

* Window to WC included where plotting conditions allow



First Floor

| | | |
|-----------|----------------|----------------|
| Lounge | 4220 x 3292 mm | 13'10" x 10'9" |
| Bedroom 3 | 4220 x 3142 mm | 13'10" x 10'3" |
| Bathroom | 1868 x 2164 mm | 6'1" x 7'1" |



Second Floor

| | | |
|-----------|----------------|----------------|
| Bedroom 1 | 4220 x 3292 mm | 13'10" x 10'9" |
| En suite | 1865 x 2126 mm | 6'1" x 6'11" |
| Bedroom 2 | 4220 x 3180 mm | 13'10" x 10'4" |

* Optional Door to En Suite

Key

| | | | | | | | | | |
|----|--------|----|-----------------------|-----|----------------------|-----|-------------------------|----|--------------------|
| B | Boiler | wm | Washing machine space | f/f | Fridge freezer space | WFH | Working from home space | ◀▶ | Dimension location |
| ST | Store | dw | Dishwasher space | td | Tumble dryer space | W | Wardrobe space | | |

A3 specification.



DAVID WILSON HOMES

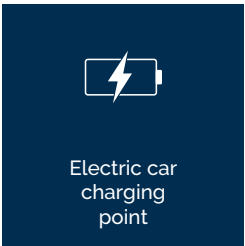
We are on the New Homes Quality Code register of registered developers. "We" refers to the Barratt Developments PLC group brands including Barratt London, Barratt Homes and David Wilson Homes. All images used are for illustrative purposes. These and the dimensions given are illustrative for this house type and individual properties may differ. Please check with your Sales Adviser in respect of individual properties. We give maximum dimensions within each room which includes areas of fixtures and fittings including fitted furniture. These dimensions should not be used for carpet or flooring sizes, appliance spaces or items of furniture. All images, photographs, dimensions and energy efficiency features depicted are not intended to be relied upon for, nor to form part of, any contract unless specifically incorporated in writing into the contract. BDW004542/APR24

CANNINGTON SPECIAL

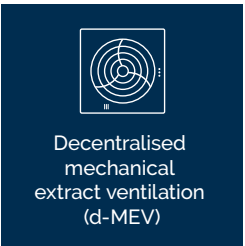
THREE BEDROOM HOME



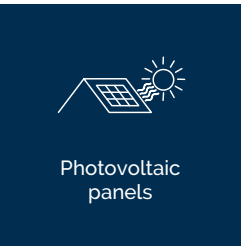
Highly-efficient insulation



Electric car charging point



Decentralised mechanical extract ventilation (d-MEV)



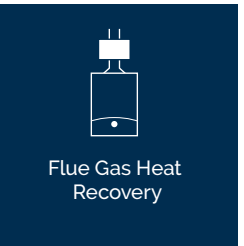
Photovoltaic panels



Waste Water Heat Recovery Systems

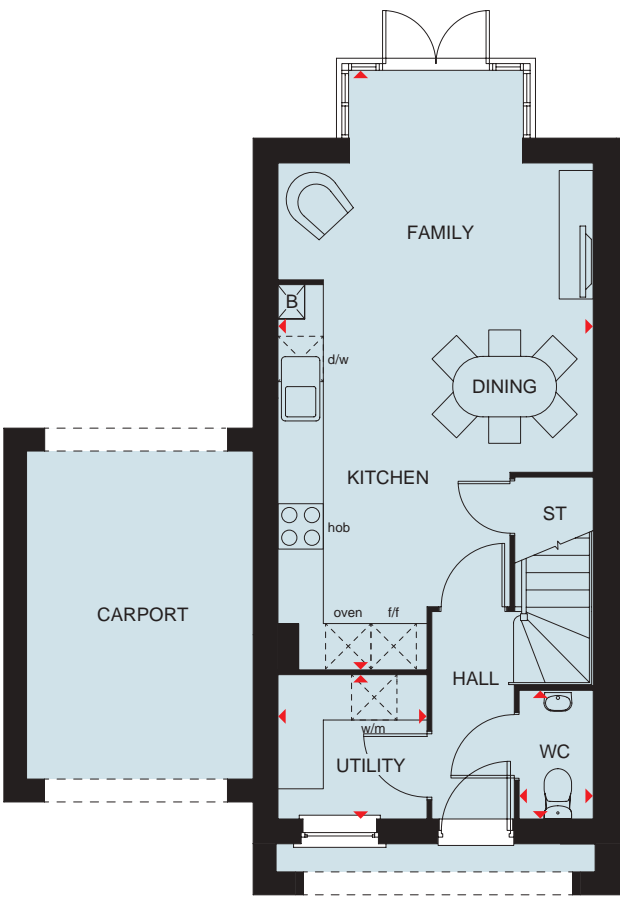


Argon-filled double-glazing



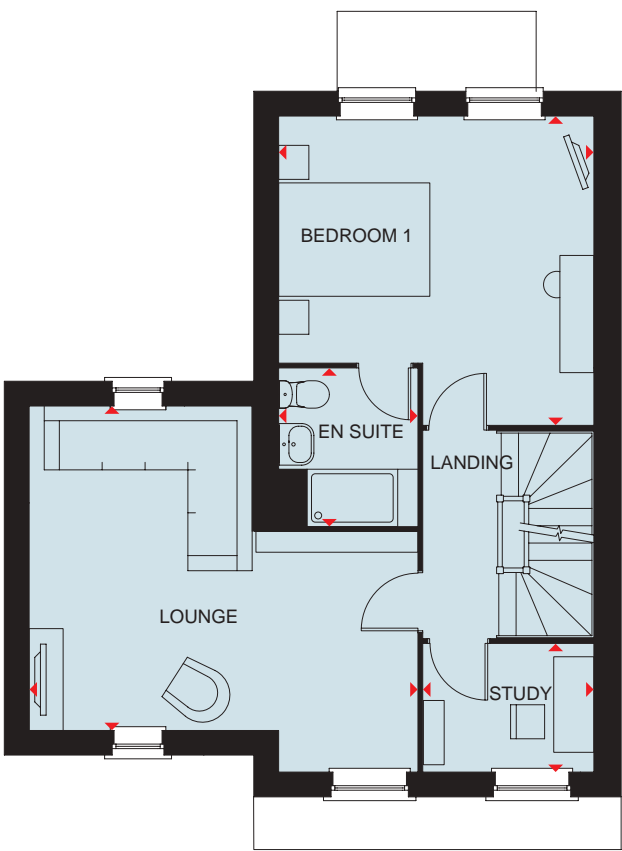
Flue Gas Heat Recovery

Features are plot specific. Please refer to working drawings.



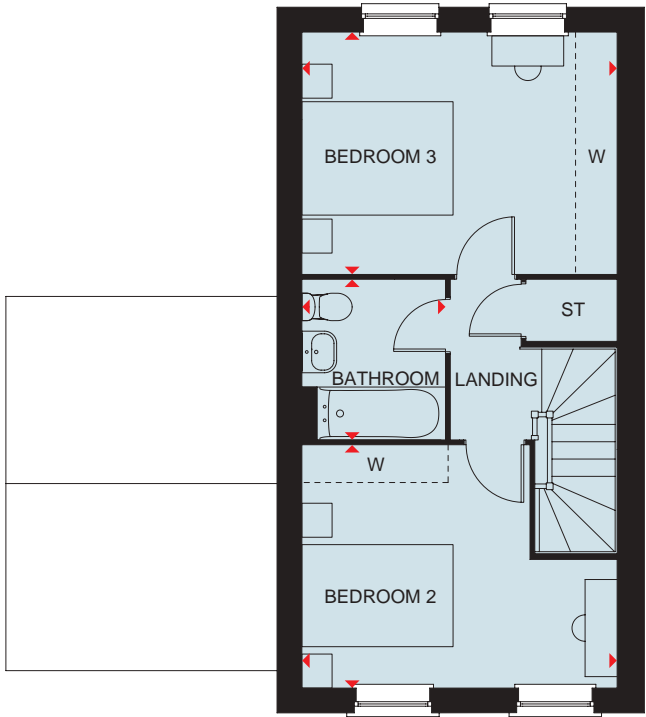
Ground Floor

| | | |
|------------------------|----------------|----------------|
| Kitchen/Dining/ Family | 4220 x 6938 mm | 12'10" x 22'9" |
| Utility | 1997 x 1727 mm | 6'6" x 5'7" |
| WC | 1006 x 1727 mm | 3'3" x 5'7" |



First Floor

| | | |
|-----------|----------------|----------------|
| Lounge | 5589 x 4642 mm | 18'4" x 15'2" |
| Bedroom 1 | 4220 x 4117 mm | 13'10" x 13'6" |
| En suite | 1805 x 1684 mm | 5'11" x 5'6" |
| Study | 2629 x 1727 mm | 8'7" x 5'7" |



Second Floor

| | | |
|-----------|----------------|----------------|
| Bedroom 2 | 4220 x 3244 mm | 12'10" x 10'7" |
| Bedroom 3 | 4220 x 3232 mm | 12'10" x 10'7" |
| Bathroom | 1925 x 2126 mm | 6'3" x 6'11" |

Key

| | | | | | | | | | |
|----|--------|-------|----------------------|----|-----------------------|-----|-------------------------|----|--------------------|
| B | Boiler | BH ST | Bulkhead store | wm | Washing machine space | td | Tumble dryer space | w | Wardrobe space |
| ST | Store | f/f | Fridge/freezer space | dw | Dishwasher space | WFH | Working from home space | ◀▶ | Dimension location |

A3 specification



DAVID WILSON HOMES

We are on the New Homes Quality Code register of registered developers. "We" refers to the Barratt Developments PLC group brands including Barratt London, Barratt Homes and David Wilson Homes. All images used are for illustrative purposes. These and the dimensions given are illustrative for this house type and individual properties may differ. Please check with your Sales Adviser in respect of individual properties. We give maximum dimensions within each room which includes areas of fixtures and fittings including fitted furniture. These dimensions should not be used for carpet or flooring sizes, appliance spaces or items of furniture. All images, photographs and dimensions are not intended to be relied upon for, nor to form part of, any contract unless specifically incorporated in writing into the contract.

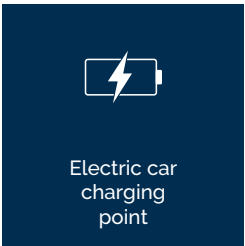
BDW004614/MAY24

PARKIN

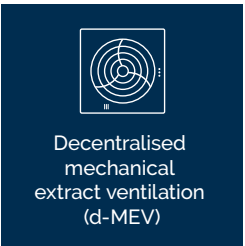
FOUR BEDROOM HOME



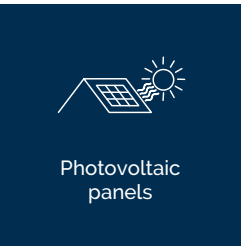
Highly-efficient insulation



Electric car charging point



Decentralised mechanical extract ventilation (d-MEV)



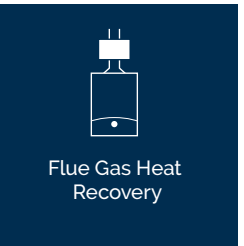
Photovoltaic panels



Waste Water Heat Recovery Systems

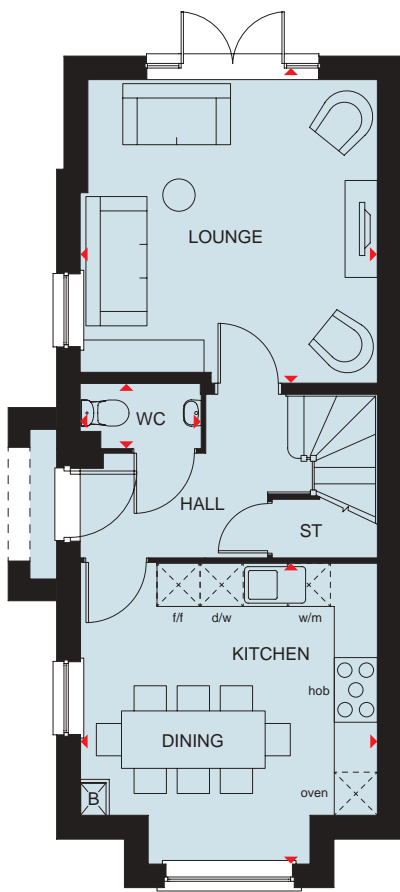


Argon-filled double-glazing



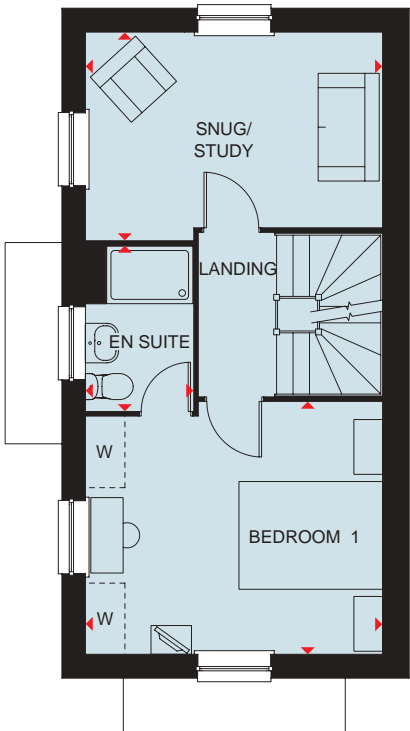
Flue Gas Heat Recovery

Features are plot specific. Please refer to working drawings.



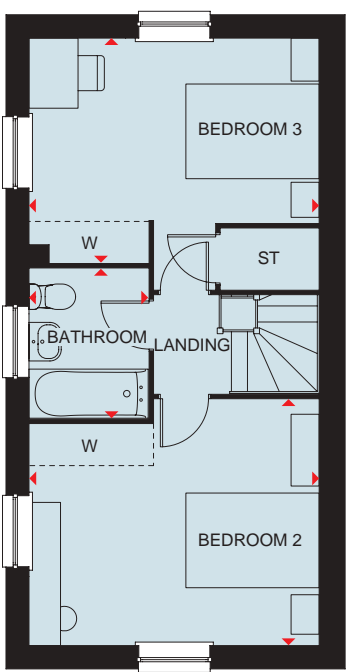
Ground Floor

| | | |
|----------------|----------------|---------------|
| Lounge | 4198 x 4278 mm | 13'7" x 14'0" |
| Kitchen/Dining | 4196 x 3551 mm | 13'7" x 11'6" |
| WC | 1723 x 995 mm | 5'6" x 3'2" |



First Floor

| | | |
|------------|----------------|---------------|
| Bedroom 1 | 4198 x 3551 mm | 13'7" x 11'6" |
| En suite | 1523 x 2315 mm | 4'9" x 7'5" |
| Snug/Study | 4198 x 2936 mm | 13'7" x 9'6" |



Second Floor

| | | |
|-----------|----------------|---------------|
| Bedroom 2 | 4198 x 3551 mm | 13'7" x 11'6" |
| Bedroom 3 | 4198 x 3245 mm | 13'7" x 10'6" |
| Bathroom | 1738 x 2156 mm | 5'7" x 7'7" |

Key

| | | | | | | | | | |
|----|--------|-------|----------------------|----|-----------------------|-----|-------------------------|----|--------------------|
| B | Boiler | BH ST | Bulkhead store | wm | Washing machine space | td | Tumble dryer space | w | Wardrobe space |
| ST | Store | f/f | Fridge/freezer space | dw | Dishwasher space | WFH | Working from home space | ◀▶ | Dimension location |

A2 specification



DAVID WILSON HOMES

We are on the New Homes Quality Code register of registered developers. "We" refers to the Barratt Developments PLC group brands including Barratt London, Barratt Homes and David Wilson Homes. All images used are for illustrative purposes. These and the dimensions given are illustrative for this house type and individual properties may differ. Please check with your Sales Adviser in respect of individual properties. We give maximum dimensions within each room which includes areas of fixtures and fittings including fitted furniture. These dimensions should not be used for carpet or flooring sizes, appliance spaces or items of furniture. All images, photographs and dimensions are not intended to be relied upon for, nor to form part of, any contract unless specifically incorporated in writing into the contract.

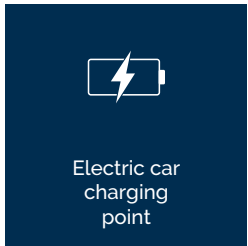
BDW004614/MAY24

PARKIN SPECIAL

4 BEDROOM HOME



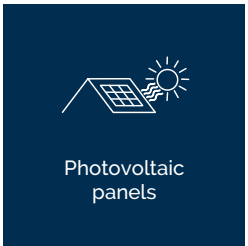
Highly-efficient insulation



Electric car charging point



Decentralised mechanical extract ventilation (d-MEV)



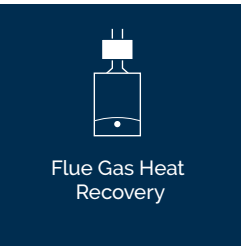
Photovoltaic panels



Waste Water Heat Recovery Systems

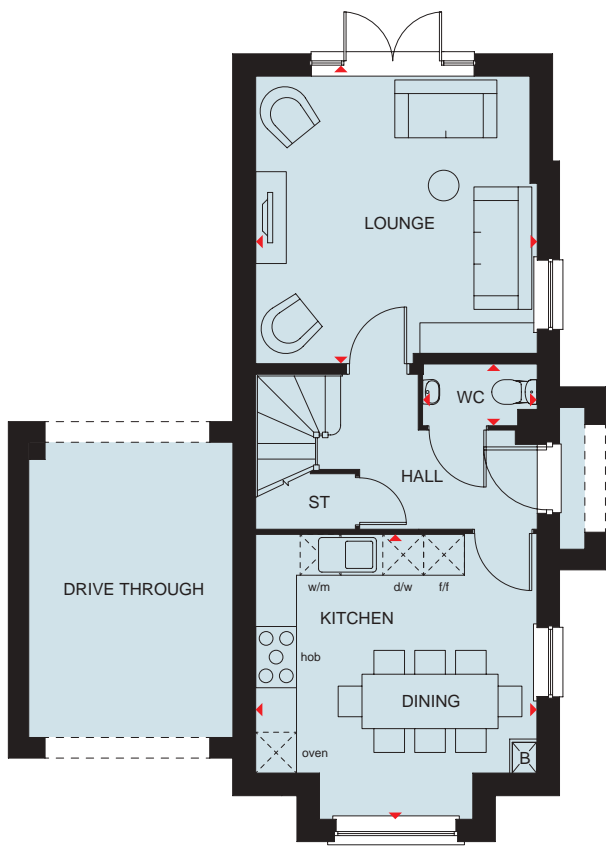


Argon-filled double-glazing

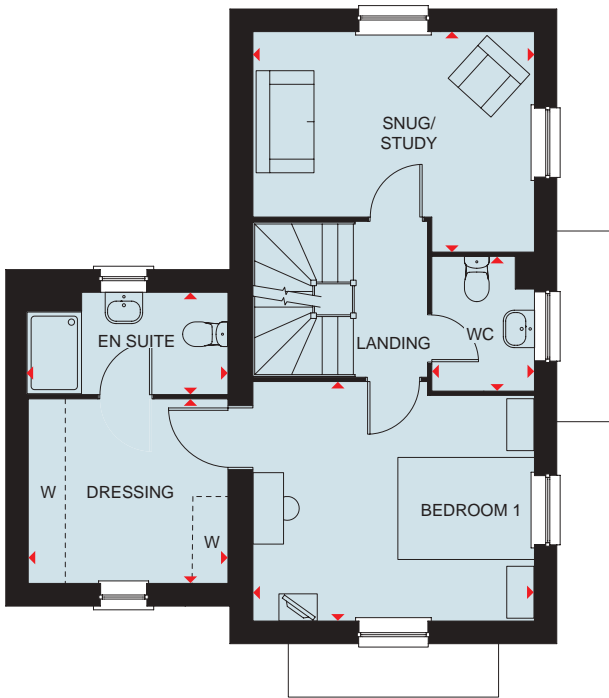


Flue Gas Heat Recovery

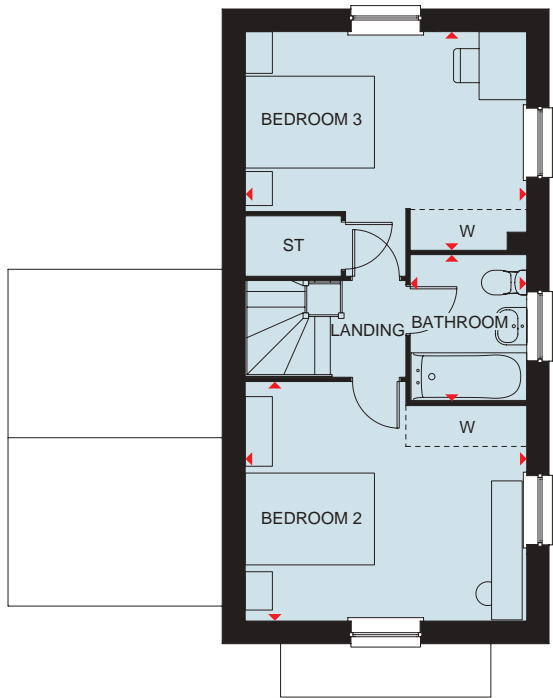
Features are plot specific. Please refer to working drawings.



| Ground Floor | | |
|----------------|----------------|---------------|
| Lounge | 4198 x 5103 mm | 13'7" x 16'7" |
| Kitchen/Dining | 4196 x 3017 mm | 13'7" x 9'8" |
| WC | 1647 x 945 mm | 5'4" x 3'1" |



| First Floor | | |
|-------------|----------------|---------------|
| Bedroom 1 | 4198 x 3347 mm | 13'7" x 10'9" |
| Dressing | 2994 x 2743 mm | 9'8" x 8'9" |
| En suite | 2997 x 1533 mm | 9'8" x 5'0" |
| Snug/Study | 4198 x 3831 mm | 13'7" x 12'5" |
| WC | 1218 x 1981 mm | 3'9" x 6'4" |



| Second Floor | | |
|--------------|----------------|---------------|
| Bedroom 2 | 4198 x 3551mm | 13'7" x 11'6" |
| Bedroom 3 | 4198 x 3245 mm | 13'7" x 10'6" |
| Bathroom | 1738 x 2156 mm | 5'7" x 7'0" |

Key

| | | | | | | | | | |
|----|--------|-------|----------------------|----|-----------------------|-----|-------------------------|----|--------------------|
| B | Boiler | BH ST | Bulkhead store | wm | Washing machine space | td | Tumble dryer space | w | Wardrobe space |
| ST | Store | f/f | Fridge/freezer space | dw | Dishwasher space | WFH | Working from home space | ◀▶ | Dimension location |

A2 specification



DAVID WILSON HOMES

We are on the New Homes Quality Code register of registered developers. "We" refers to the Barratt Developments PLC group brands including Barratt London, Barratt Homes and David Wilson Homes. All images used are for illustrative purposes. These and the dimensions given are illustrative for this house type and individual properties may differ. Please check with your Sales Adviser in respect of individual properties. We give maximum dimensions within each room which includes areas of fixtures and fittings including fitted furniture. These dimensions should not be used for carpet or flooring sizes, appliance spaces or items of furniture. All images, photographs and dimensions are not intended to be relied upon for, nor to form part of, any contract unless specifically incorporated in writing into the contract.

BDW004614/MAY24

HOLLINWOOD

FOUR BEDROOM HOME



Highly-efficient insulation

Electric car charging point

Decentralised mechanical extract ventilation (d-MEV)

Photovoltaic panels

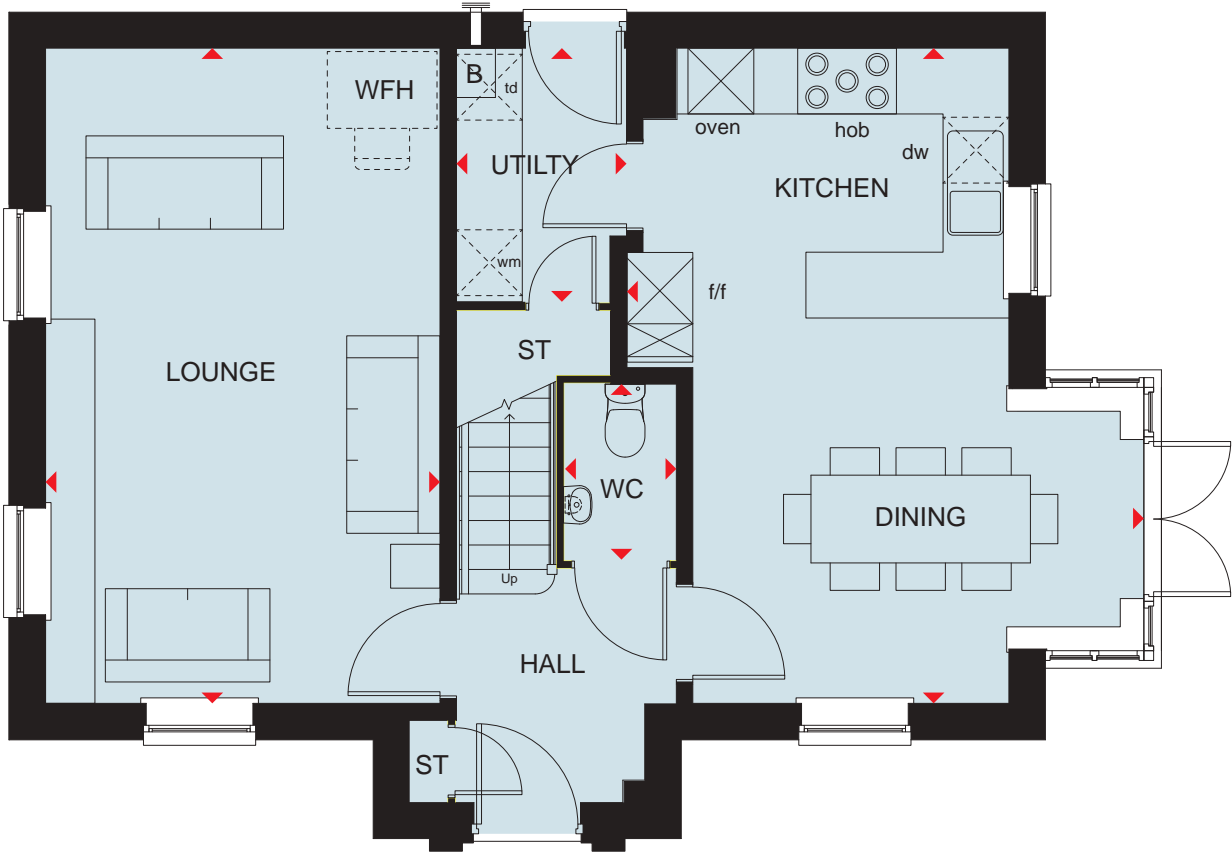
Waste Water Heat Recovery Systems

Argon-filled double-glazing

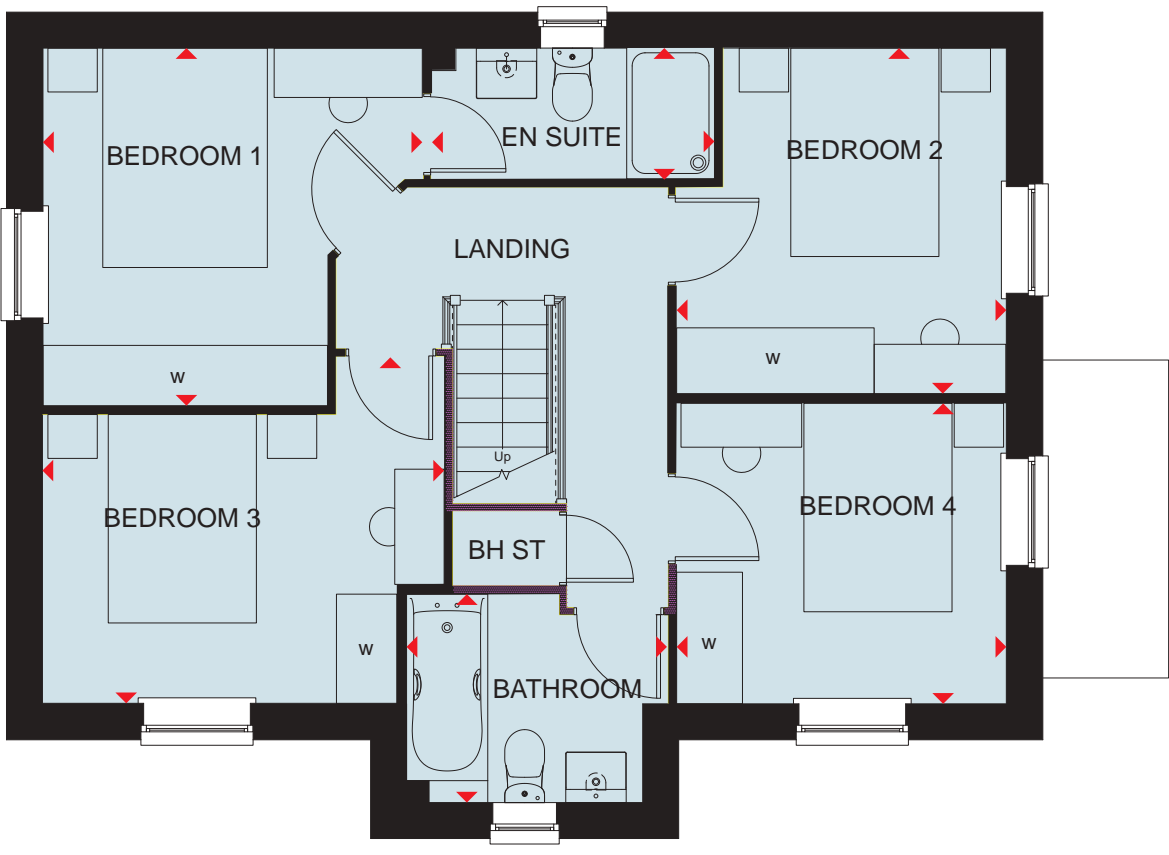
Flue Gas Heat Recovery System

Smart Thermostat

Features are plot specific. Please refer to working drawings.



| | | |
|---------------------|----------------|----------------|
| Ground Floor | | |
| Lounge | 3650 x 6028 mm | 11'11" x 19'9" |
| Kitchen/Dining | 4728 x 6634 mm | 15'6" x 21'9" |
| Utility | 1600 x 2350 mm | 5'2" x 7'8" |
| WC | 1052 x 1825 mm | 3'5" x 5'11" |



| | | |
|--------------------|----------------|---------------|
| First Floor | | |
| Bedroom 1 | 3500 x 3300 mm | 11'5" x 10'9" |
| En suite | 2600 x 1227 mm | 8'6" x 4'3" |
| Bedroom 2 | 2614 x 3188 mm | 8'6" x 10'5" |
| Bedroom 3 | 3614 x 2665 mm | 11'10" x 8'8" |
| Bedroom 4 | 3016 x 2777 mm | 9'10" x 9'1" |
| Bathroom | 2203 x 1939 mm | 7'2" x 6'4" |

| | | | | |
|------------|--------------------------|--------------------------|-----------------------------|-----------------------|
| Key | | | | |
| B Boiler | BH ST Bulkhead Store | dw Dishwasher space | td Tumble dryer space | W Wardrobe space |
| ST Store | wm Washing machine space | f/f Fridge freezer space | WFH Working from home space | ◀▶ Dimension location |

A2 specification.



DAVID WILSON HOMES

We are on the New Homes Quality Code register of registered developers. "We" refers to the Barratt Developments PLC group brands including Barratt London, Barratt Homes and David Wilson Homes. All images used are for illustrative purposes. The images and the dimensions given are illustrative for this house type and individual properties may differ. Please check with your Sales Adviser in respect of individual properties. We give maximum dimensions within each room which includes areas of fixtures and fittings including fitted furniture. These dimensions should not be used for carpet or flooring sizes, appliance spaces or items of furniture. All images, photographs, dimensions and energy efficiency features depicted are not intended to be relied upon for, nor to form part of, any contract unless specifically incorporated in writing into the contract. BDW004542/APR24

THE ASHINGTON

FOUR BEDROOM HOME



Highly-efficient insulation

Electric car charging point

Decentralised mechanical extract ventilation (d-MEV)

Photovoltaic panels

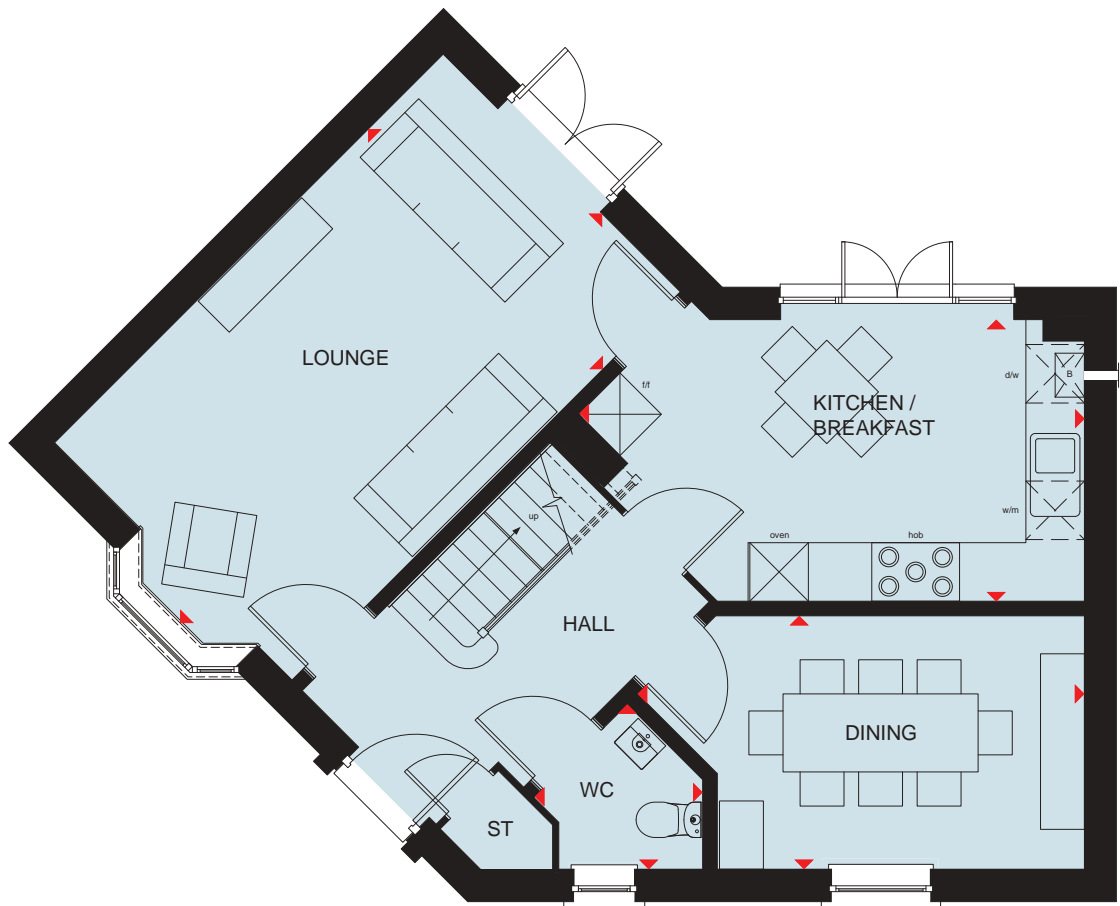
Waste Water Heat Recovery Systems

Argon-filled double-glazing

Flue Gas Heat Recovery System

Smart Thermostat

Features are plot specific. Please refer to working drawings.



| | | | |
|---------------------|----------------|---------------|--|
| Ground Floor | | | |
| Kitchen/Breakfast | 3738 x 2942 mm | 12'3" x 9'7" | |
| Dining | 3814 x 2653 mm | 12'6" x 8'8" | |
| Lounge | 3493 x 5695 mm | 11'5" x 18'8" | |



| | | | |
|--------------------|----------------|----------------|--|
| First Floor | | | |
| Bedroom 1 | 3722 x 3316 mm | 12'2" x 10'10" | |
| En suite | 1438 x 2317 mm | 4'8" x 7'7" | |
| Bedroom 2 | 3522 x 3247 mm | 11'6" x 10'7" | |
| Bedroom 3 | 3401 x 5056 mm | 11'1" x 16'7" | |
| Bedroom 4 | 2557 x 2385 mm | 8'4" x 7'8" | |
| Bathroom | 2239 x 2317 mm | 7'4" x 7'7" | |

| | | | | | | | |
|------------|--------|-------|----------------|----|-----------------------|-----|-------------------------|
| Key | | | | | | | |
| B | Boiler | BH | Bulkhead | wm | Washing machine space | f/f | Fridge freezer space |
| ST | Store | BH/ST | Bulkhead Store | dw | Dishwasher space | td | Tumble dryer space |
| | | | | | | WFH | Working from home space |
| | | | | | | W | Wardrobe space |
| | | | | | | | ♦♦ Dimension location |

A2 specification.



DAVID WILSON HOMES

BAYSWATER

FOUR BEDROOM HOME



Highly-efficient insulation

Electric car charging point

Decentralised mechanical extract ventilation (d-MEV)

Photovoltaic panels

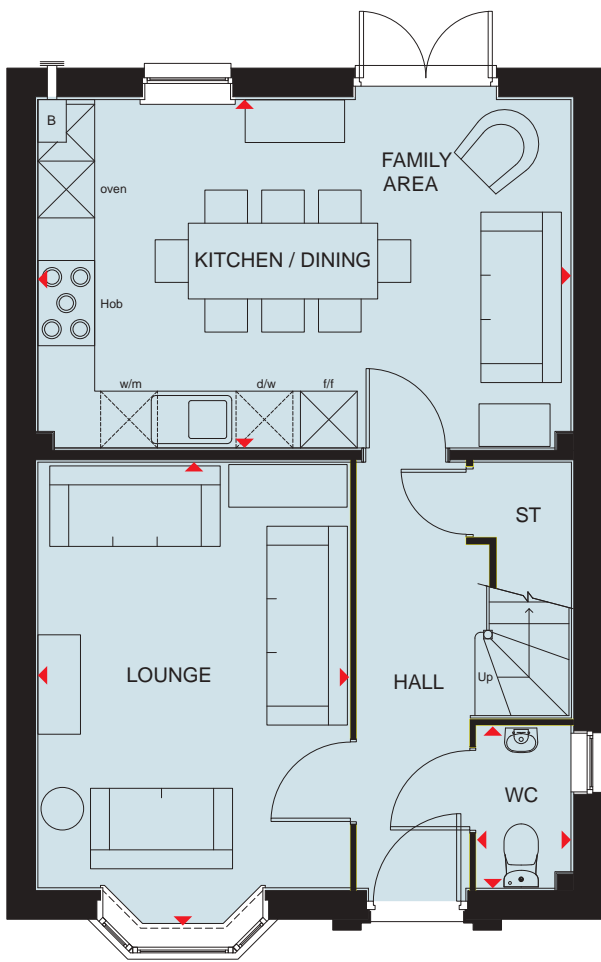
Waste Water Heat Recovery Systems

Argon-filled double-glazing

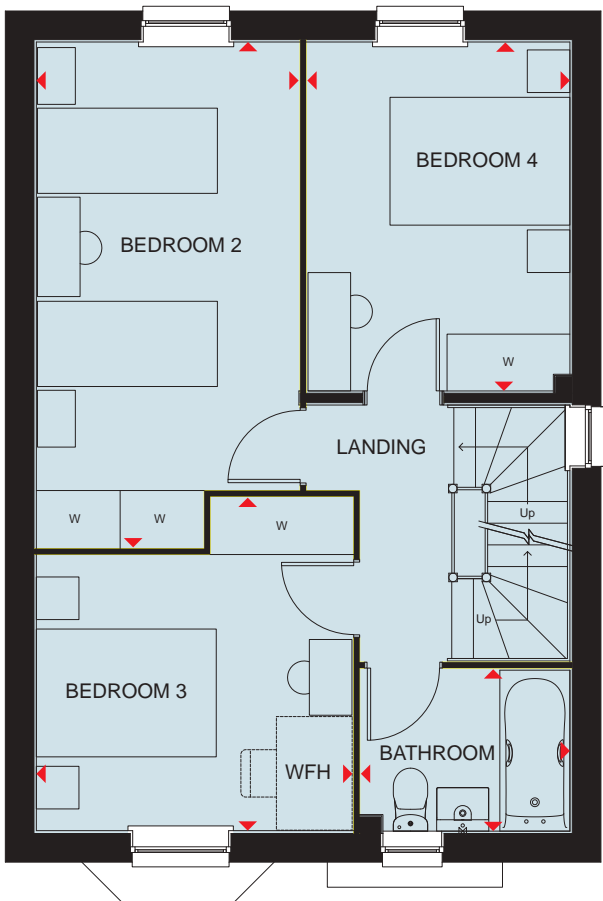
Flue Gas Heat Recovery System

Smart Thermostat

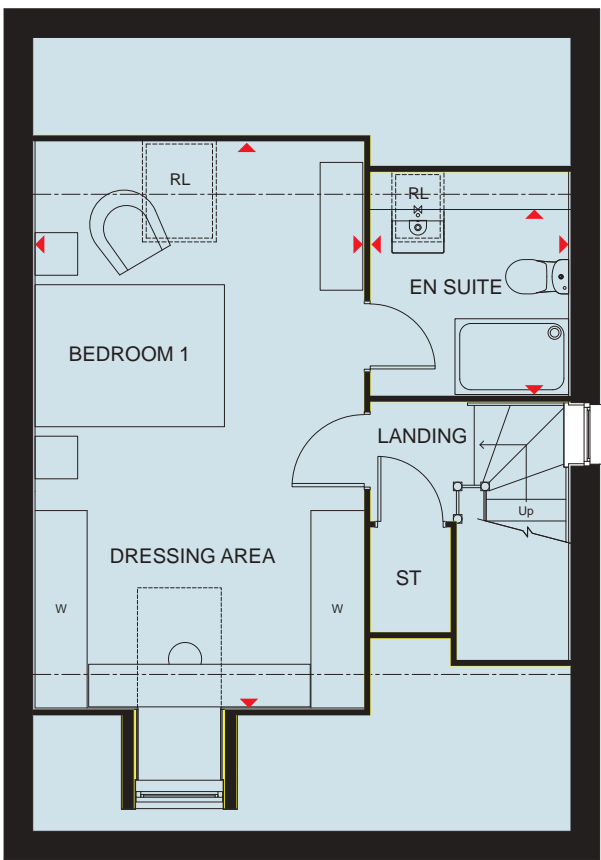
Features are plot specific. Please refer to working drawings.



| | | |
|---------------------|----------------|-----------------|
| Ground Floor | | |
| Kitchen/Dining | 5685 x 3735 mm | 17'7" x 12'3" |
| Lounge | 3326 x 4551 mm | 10'10" x 14'11" |
| WC | 1036 x 1747 mm | 3'4" x 5'8" |



| | | |
|--------------------|----------------|--------------|
| First Floor | | |
| Bedroom 2 | 4763 x 2811 mm | 15'7" x 9'2" |
| Bedroom 3 | 3377 x 2947 mm | 11'0" x 9'8" |
| Bedroom 4 | 2811 x 3735 mm | 9'2" x 12'3" |
| Bathroom | 2246 x 1747 mm | 7'4" x 5'8" |



| | | |
|--------------------|----------------|----------------|
| First Floor | | |
| Bedroom 1 | 3944 x 6000 mm | 12'11" x 19'8" |
| En suite | 2194 x 2365 mm | 7'2" x 7'9" |

Key

| | | | | | | | | | |
|----|--------|-----|------------------|-----|-------------------------|----|----------------|----|--------------------|
| B | Boiler | w/m | Washing machine | f/f | Fridge freezer space | W | Wardrobe space | ◀▶ | Dimension location |
| ST | Store | d/w | Dishwasher space | WFH | Working from home space | RL | Roof lights | | |

A2 specification.



DAVID WILSON HOMES

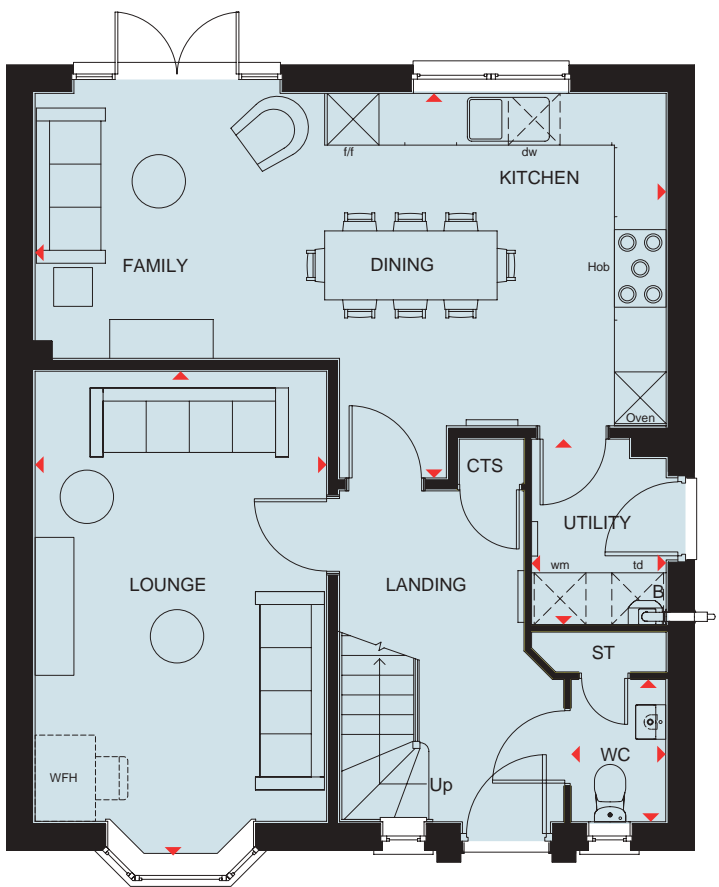
We are on the New Homes Quality Code register of registered developers. "We" refers to the Barratt Developments PLC group brands including Barratt London, Barratt Homes and David Wilson Homes. All images used are for illustrative purposes. The images and the dimensions given are illustrative for this house type and individual properties may differ. Please check with your Sales Adviser in respect of individual properties. We give maximum dimensions within each room which includes areas of fixtures and fittings including fitted furniture. These dimensions should not be used for carpet or flooring sizes, appliance spaces or items of furniture. All images, photographs, dimensions and energy efficiency features depicted are not intended to be relied upon for, nor to form part of, any contract unless specifically incorporated in writing into the contract. BDW004542/APR24

KIRKDALE

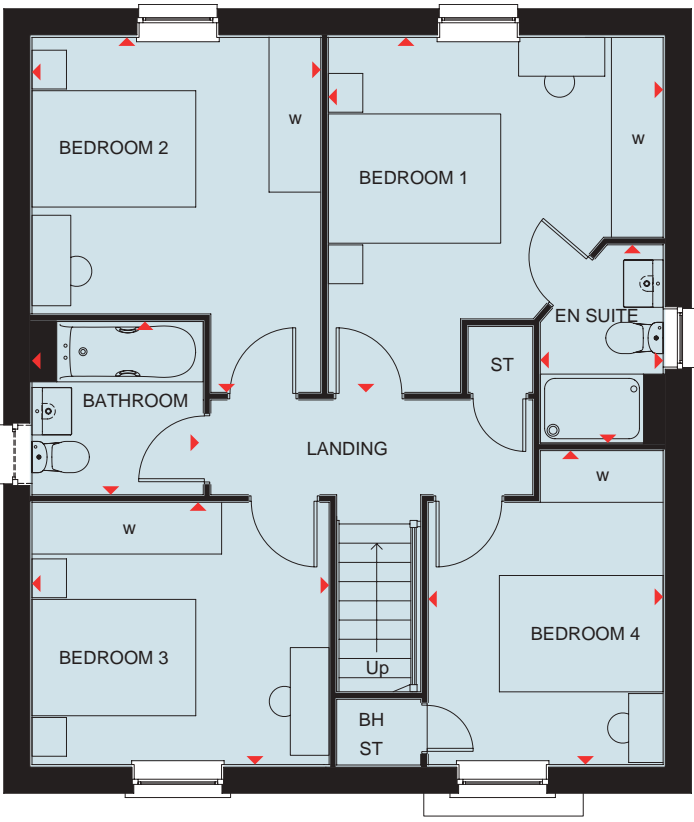
FOUR BEDROOM HOME



Features are plot specific. Please refer to working drawings.



| Ground Floor | | |
|-----------------------|----------------|---------------|
| Kitchen/Dining/Family | 7373 x 3910 mm | 24'2" x 12'9" |
| Utility | 1538 x 2188 mm | 5'0" x 7'2" |
| Lounge | 3435 x 5275 mm | 11'3" x 17'3" |
| WC | 1138 x 1688 mm | 3'8" x 5'6" |



| First Floor | | |
|-------------|----------------|----------------|
| Bedroom 1 | 3922 x 4161 mm | 12'10" x 13'7" |
| En suite | 1463 x 2325 mm | 4'9" x 7'7" |
| Bedroom 2 | 3388 x 3251 mm | 11'1" x 10'7" |
| Bedroom 3 | 3485 x 3086 mm | 11'5" x 10'1" |
| Bedroom 4 | 2763 x 3686 mm | 9'0" x 12'1" |
| Bathroom | 2025 x 2035 mm | 6'7" x 6'8" |

| Key | | | | | |
|-----|--------|-------|-----------------------|-----|-------------------------|
| B | Boiler | BH ST | Bulkhead Store | dw | Dishwasher space |
| ST | Store | wm | Washing machine space | f/f | Fridge freezer space |
| | | | | td | Tumble dryer space |
| | | | | WFH | Working from home space |
| | | | | W | Wardrobe space |
| | | | | ◀▶ | Dimension location |

A2 specification.



DAVID WILSON HOMES

We are on the New Homes Quality Code register of registered developers. "We" refers to the Barratt Developments PLC group brands including Barratt London, Barratt Homes and David Wilson Homes. All images used are for illustrative purposes. The images and the dimensions given are illustrative for this house type and individual properties may differ. Please check with your Sales Adviser in respect of individual properties. We give maximum dimensions within each room which includes areas of fixtures and fittings including fitted furniture. These dimensions should not be used for carpet or flooring sizes, appliance spaces or items of furniture. All images, photographs, dimensions and energy efficiency features depicted are not intended to be relied upon for, nor to form part of, any contract unless specifically incorporated in writing into the contract.

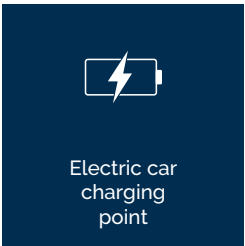
BDW004542/APR24

HERTFORD

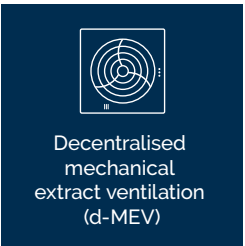
FOUR BEDROOM HOME



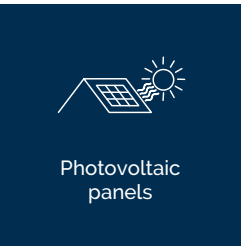
Highly-efficient insulation



Electric car charging point



Decentralised mechanical extract ventilation (d-MEV)



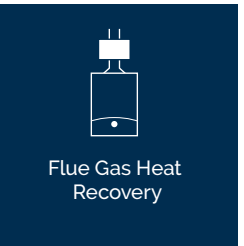
Photovoltaic panels



Waste Water Heat Recovery Systems

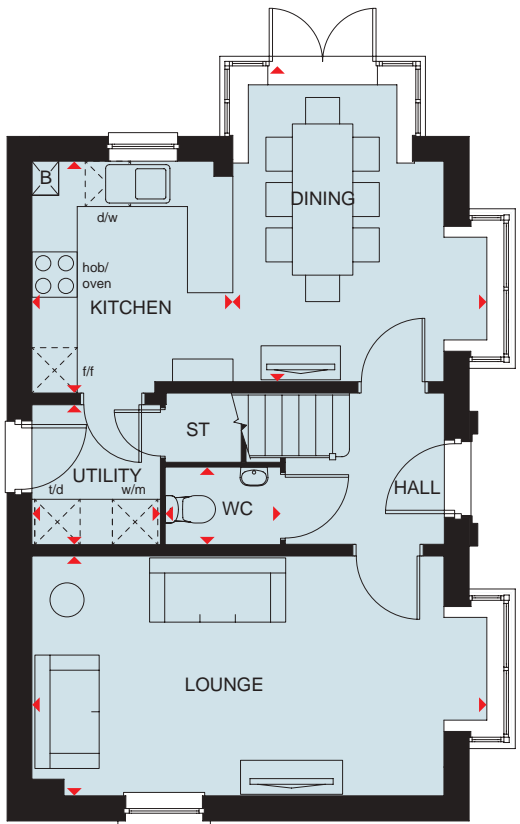


Argon-filled double-glazing

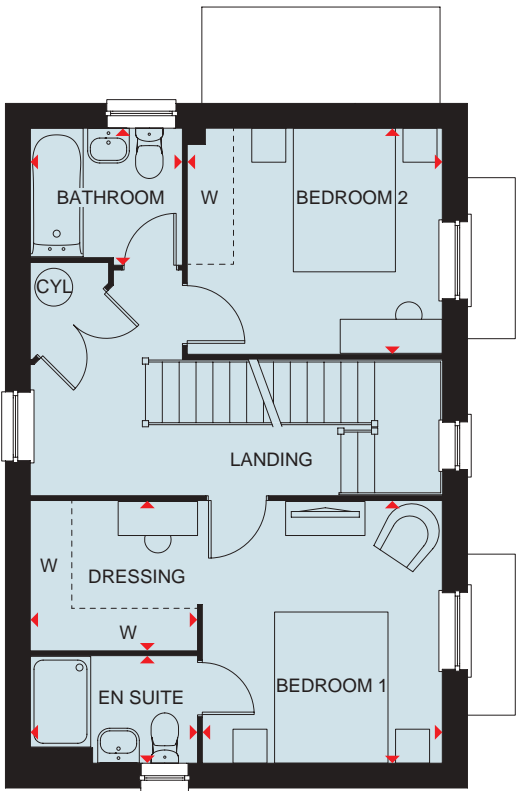


Flue Gas Heat Recovery

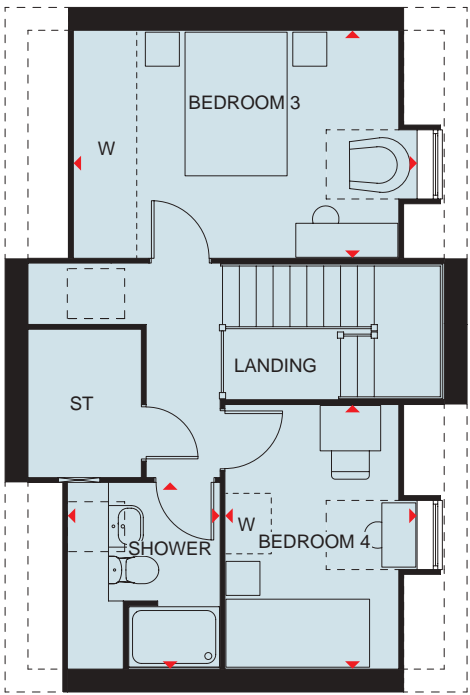
Features are plot specific. Please refer to working drawings.



| Ground Floor | | |
|----------------|----------------|---------------|
| Kitchen/Dining | 5505 x 3117 mm | 18'0" x 10'2" |
| Utility | 1526 x 1905 mm | 5'0" x 6'2" |
| Lounge | 5505 x 3228 mm | 18'0" x 10'7" |
| WC | 1525 x 1051 mm | 5'0" x 3'5" |



| First Floor | | |
|-------------|----------------|---------------|
| Bedroom 1 | 3024 x 3500 mm | 9'11" x 11'5" |
| Dressing | 2350 x 1989 mm | 7'8" x 6'6" |
| En suite | 2238 x 1448 mm | 7'4" x 4'9" |
| Bedroom 2 | 3404 x 3016 mm | 11'2" x 9'10" |
| Bathroom | 2038 x 1738 mm | 6'8" x 5'8" |



| Second Floor | | |
|--------------|----------------|---------------|
| Bedroom 3 | 4305 x 3016 mm | 14'1" x 9'10" |
| Bedroom 4 | 3500 x 2300 mm | 11'5" x 7'6" |
| Shower room | 1218 x 2470 mm | 3'11" x 8'1" |

Key

| | | | | | | | | | |
|----|--------|-------|----------------------|----|-----------------------|-----|-------------------------|----|--------------------|
| B | Boiler | BH ST | Bulkhead store | wm | Washing machine space | td | Tumble dryer space | w | Wardrobe space |
| ST | Store | f/f | Fridge/freezer space | dw | Dishwasher space | WFH | Working from home space | ◀▶ | Dimension location |

A2 specification



DAVID WILSON HOMES

We are on the New Homes Quality Code register of registered developers. "We" refers to the Barratt Developments PLC group brands including Barratt London, Barratt Homes and David Wilson Homes. All images used are for illustrative purposes. These and the dimensions given are illustrative for this house type and individual properties may differ. Please check with your Sales Adviser in respect of individual properties. We give maximum dimensions within each room which includes areas of fixtures and fittings including fitted furniture. These dimensions should not be used for carpet or flooring sizes, appliance spaces or items of furniture. All images, photographs and dimensions are not intended to be relied upon for, nor to form part of, any contract unless specifically incorporated in writing into the contract.

BDW004614/MAY24

THE MERIDEN

FOUR BEDROOM HOME



Highly-efficient insulation

Electric car charging point

Decentralised mechanical extract ventilation (d-MEV)

Photovoltaic panels

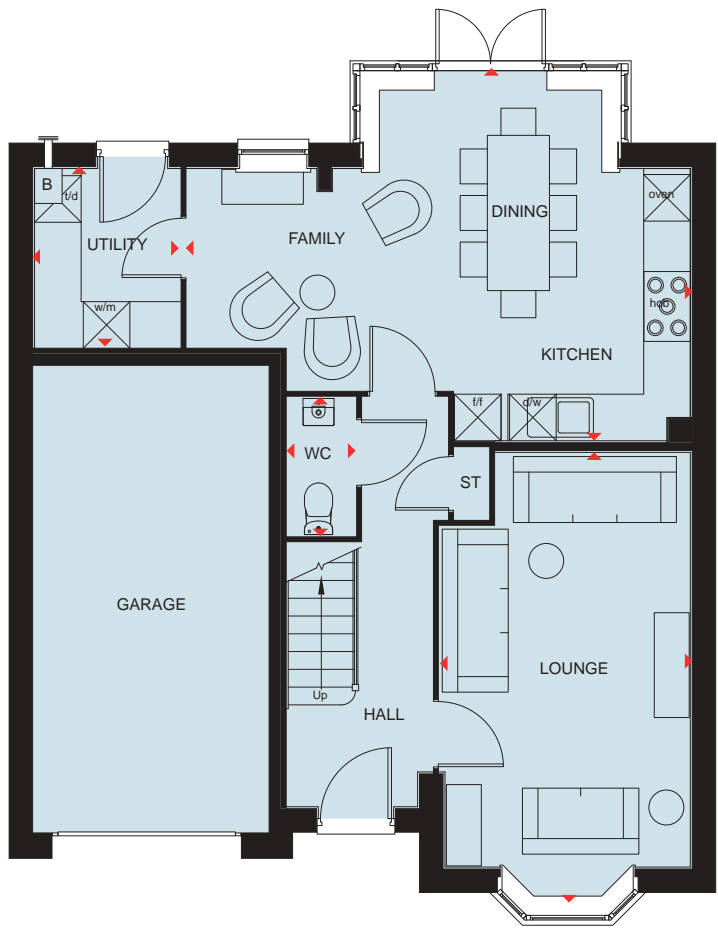
Waste Water Heat Recovery Systems

Argon-filled double-glazing

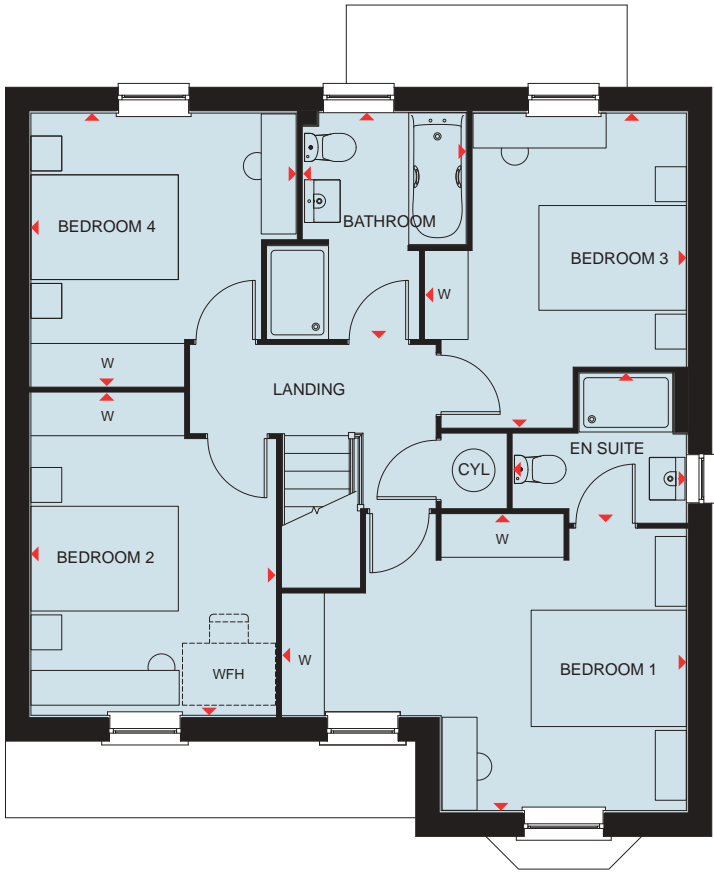
Flue Gas Heat Recovery System

Smart Thermostat

Features are plot specific. Please refer to working drawings.



| Ground Floor | | | |
|-----------------------|----------------|---------------|--|
| Kitchen/Dining/Family | 6523 x 4896 mm | 20'6" x 16'0" | |
| Lounge | 3210 x 5393 mm | 10'6" x 17'8" | |
| Utility | 1913 x 2411 mm | 6'3" x 7'10" | |
| WC | 1045 x 1875 mm | 3'5" x 6'1" | |



| First Floor | | | |
|-------------|----------------|---------------|--|
| Bedroom 1 | 4941 x 3671 mm | 16'2" x 12'0" | |
| En suite | 2271 x 1949 mm | 7'5" x 6'4" | |
| Bedroom 2 | 3191 x 4197 mm | 10'5" x 13'9" | |
| Bedroom 3 | 3399 x 4092 mm | 11'1" x 13'5" | |
| Bedroom 4 | 3459 x 3563 mm | 11'4" x 11'8" | |
| Bathroom | 2126 x 2949 mm | 6'11" x 9'8" | |

| Key | | | | | | | |
|-----|--------|----|-----------------------|-----|----------------------|-----|-------------------------|
| B | Boiler | wm | Washing machine space | f/f | Fridge/freezer space | WFH | Working from home space |
| ST | Store | dw | Dishwasher space | td | Tumble dryer space | w | Wardrobe space |

◀ ▶ Dimension location

A2 specification.



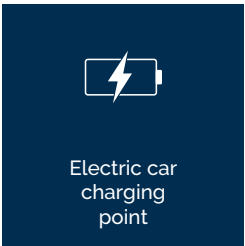
DAVID WILSON HOMES

AVONDALE

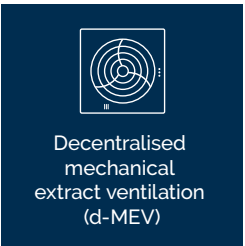
FOUR BEDROOM HOME



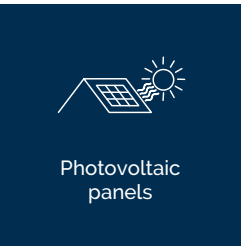
Highly-efficient insulation



Electric car charging point



Decentralised mechanical extract ventilation (d-MEV)



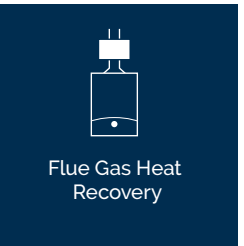
Photovoltaic panels



Waste Water Heat Recovery Systems

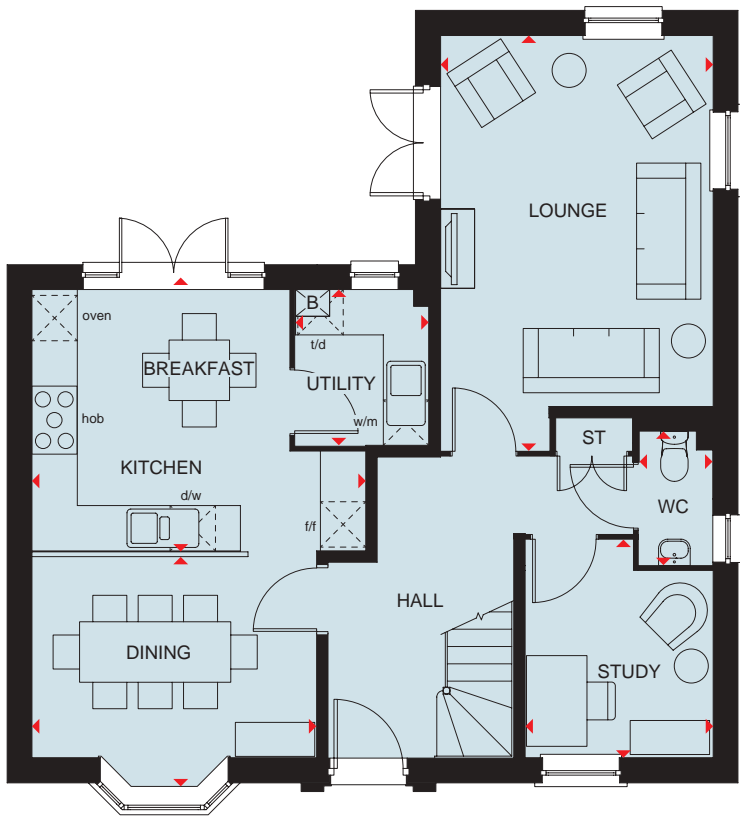


Argon-filled double-glazing

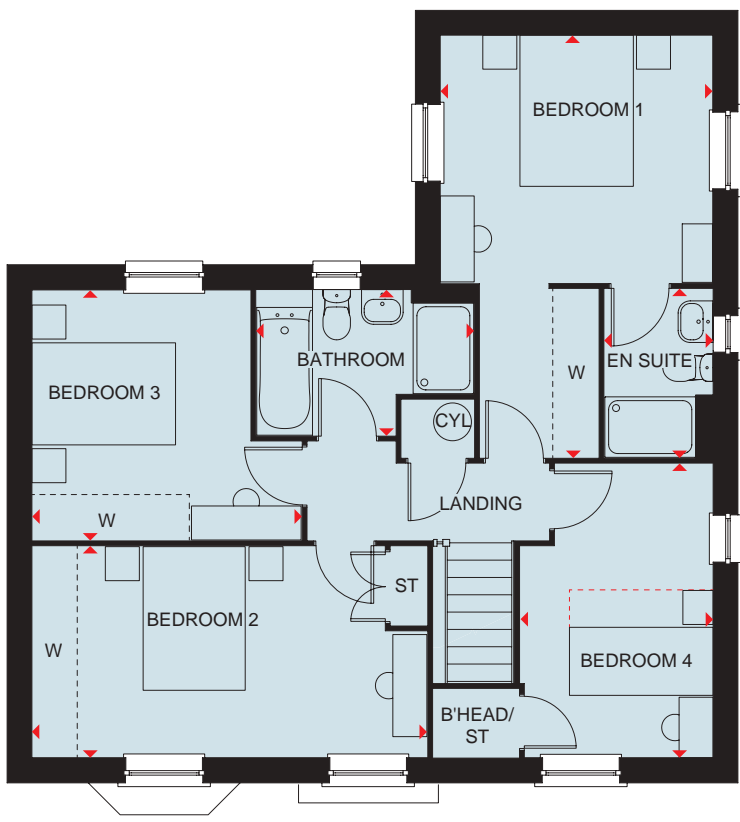


Flue Gas Heat Recovery

Features are plot specific. Please refer to working drawings.



| Ground Floor | | |
|-------------------|----------------|---------------|
| Kitchen/Breakfast | 3439 x 3495 mm | 11'3" x 11'5" |
| Dining | 3816 x 2690 mm | 12'6" x 8'9" |
| Utility | 1801 x 2164 mm | 5'10" x 7'1" |
| Study | 2538 x 2508 mm | 8'3" x 8'2" |
| Lounge | 3660 x 4963 mm | 12'0" x 16'3" |
| WC | 1018 x 1980 mm | 3'4" x 6'5" |



| First Floor | | |
|-------------|----------------|----------------|
| Bedroom 1 | 3660 x 5623 mm | 12'0" x 18'5" |
| En suite | 1470 x 2248 mm | 4'9" x 7'4" |
| Bedroom 2 | 5242 x 2835 mm | 17'2" x 9'3" |
| Bedroom 3 | 3601 x 3351 mm | 11'9" x 10'11" |
| Bedroom 4 | 2522 x 3897 mm | 8'4" x 12'9" |
| Bathroom | 1801 x 2164 mm | 5'10" x 7'1" |

Key

| | | | | | | | | | |
|----|--------|-------|----------------------|----|-----------------------|-----|-------------------------|----|--------------------|
| B | Boiler | BH ST | Bulkhead store | wm | Washing machine space | td | Tumble dryer space | w | Wardrobe space |
| ST | Store | f/f | Fridge/freezer space | dw | Dishwasher space | WFH | Working from home space | ◀▶ | Dimension location |

A1 specification



DAVID WILSON HOMES

WINSTONE

FOUR BEDROOM HOME



Highly-efficient insulation

Electric car charging point

Decentralised mechanical extract ventilation (d-MEV)

Photovoltaic panels

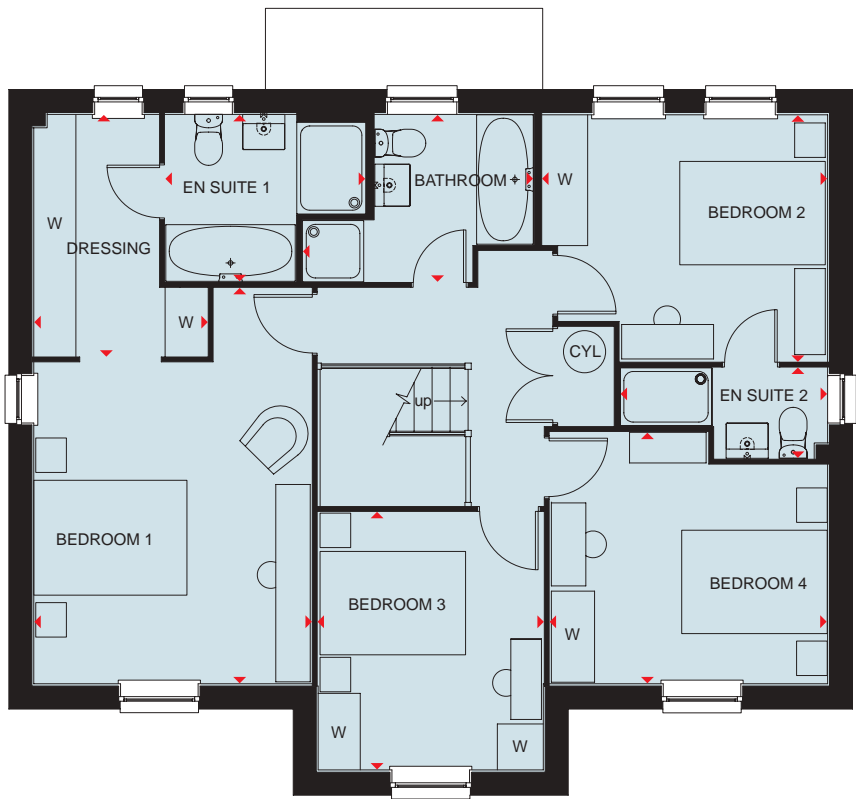
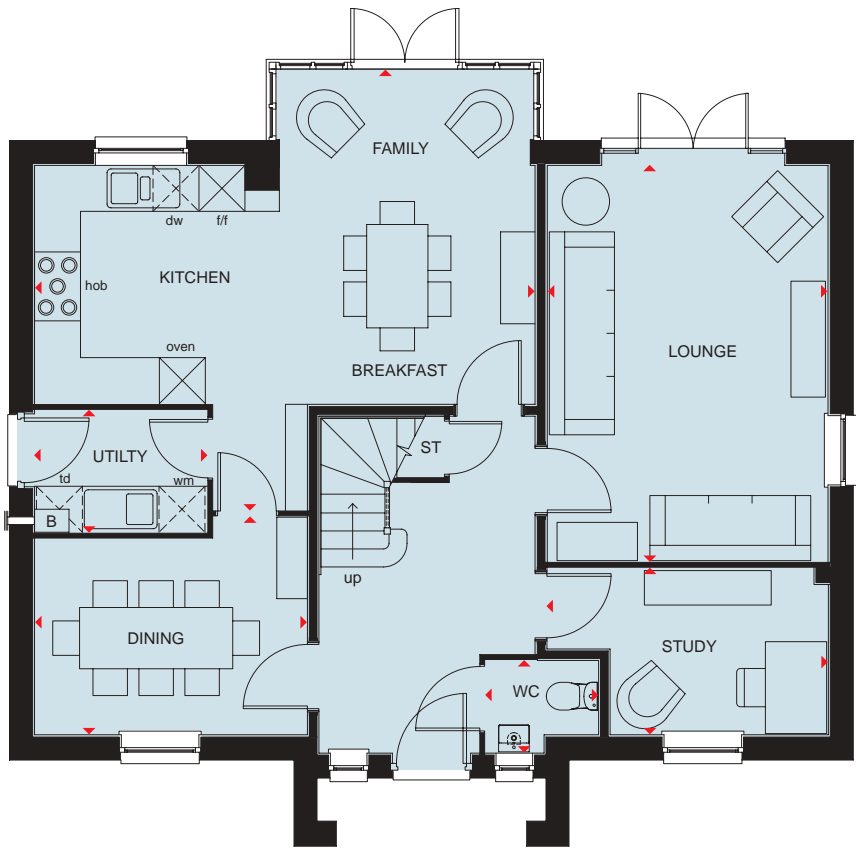
Waste Water Heat Recovery Systems

Argon-filled double-glazing

Flue Gas Heat Recovery System

Smart Thermostat

Features are plot specific. Please refer to working drawings.



| Ground Floor | | |
|-------------------|----------------|---------------|
| Kitchen/Breakfast | 6340 x 3146 mm | 20'9" x 10'3" |
| Utility | 2349 x 1617 mm | 7'8" x 5'3" |
| Dining | 3411 x 2597 mm | 11'2" x 8'6" |
| Lounge | 3768 x 5207 mm | 12'4" x 17'1" |
| Study | 3723 x 2216 mm | 12'2" x 7'3" |
| WC | 1513 x 904 mm | 4'11" x 2'11" |

| First Floor | | |
|---------------|----------------|----------------|
| Bedroom 1 | 3411 x 4232 mm | 11'2" x 13'10" |
| Dressing Area | 1666 x 3191 mm | 5'5" x 10'5" |
| En suite 1 | 2641 x 2217 mm | 8'7" x 7'3" |
| Bedroom 2 | 3759 x 3259 mm | 12'3" x 10'8" |
| En suite 2 | 2746 x 1204 mm | 9'0" x 3'11" |
| Bedroom 3 | 2985 x 3404 mm | 9'9" x 11'2" |
| Bedroom 4 | 3410 x 2897 mm | 11'2" x 9'6" |
| Bathroom | 3043 x 2218 mm | 9'11" x 7'3" |

* Window may be omitted on certain plots.
Speak to a Sales Adviser for details on individual plans.

| Key | | | | | |
|-----|--------|----|-----------------------|-----|----------------------|
| B | Boiler | wm | Washing machine space | f/f | Fridge freezer space |
| ST | Store | dw | Dishwasher space | td | Tumble dryer space |
| | | | | W | Wardrobe space |
| | | | | ◀▶ | Dimension location |

A1 specification.



DAVID WILSON HOMES

THE MANNING

FIVE BEDROOM HOME



Highly-efficient insulation

Electric car charging point

Decentralised mechanical extract ventilation (d-MEV)

Photovoltaic panels

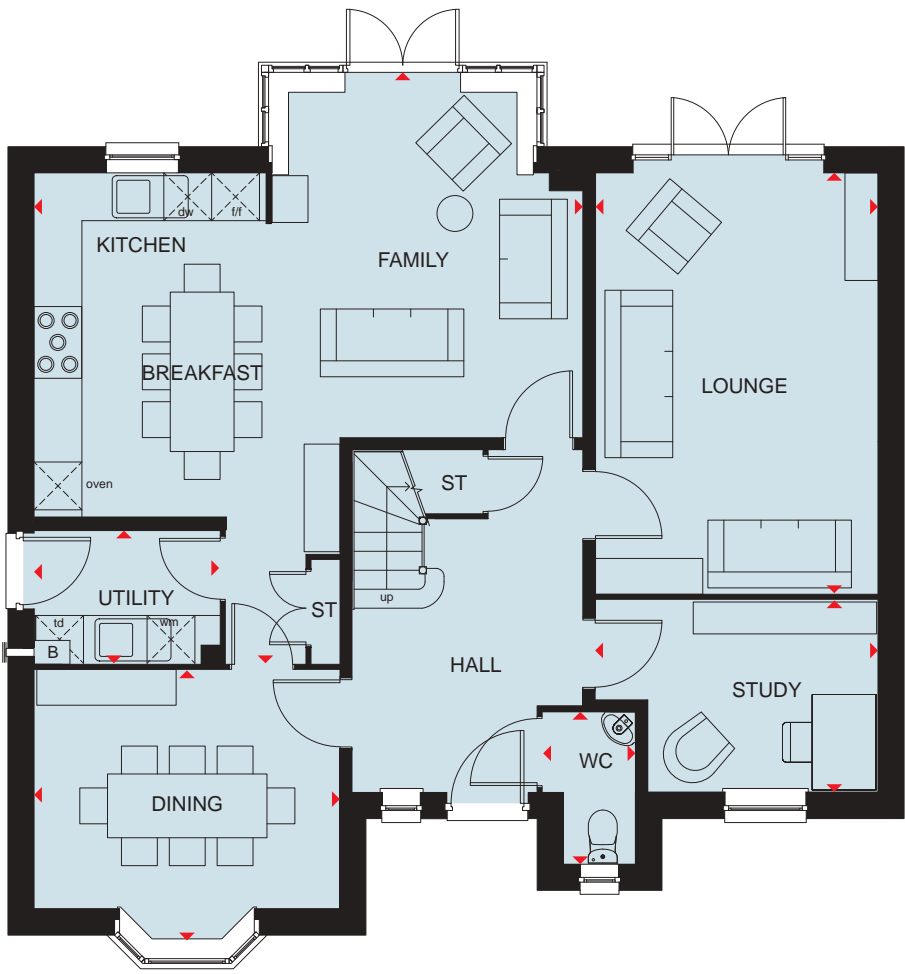
Waste Water Heat Recovery Systems

Argon-filled double-glazing

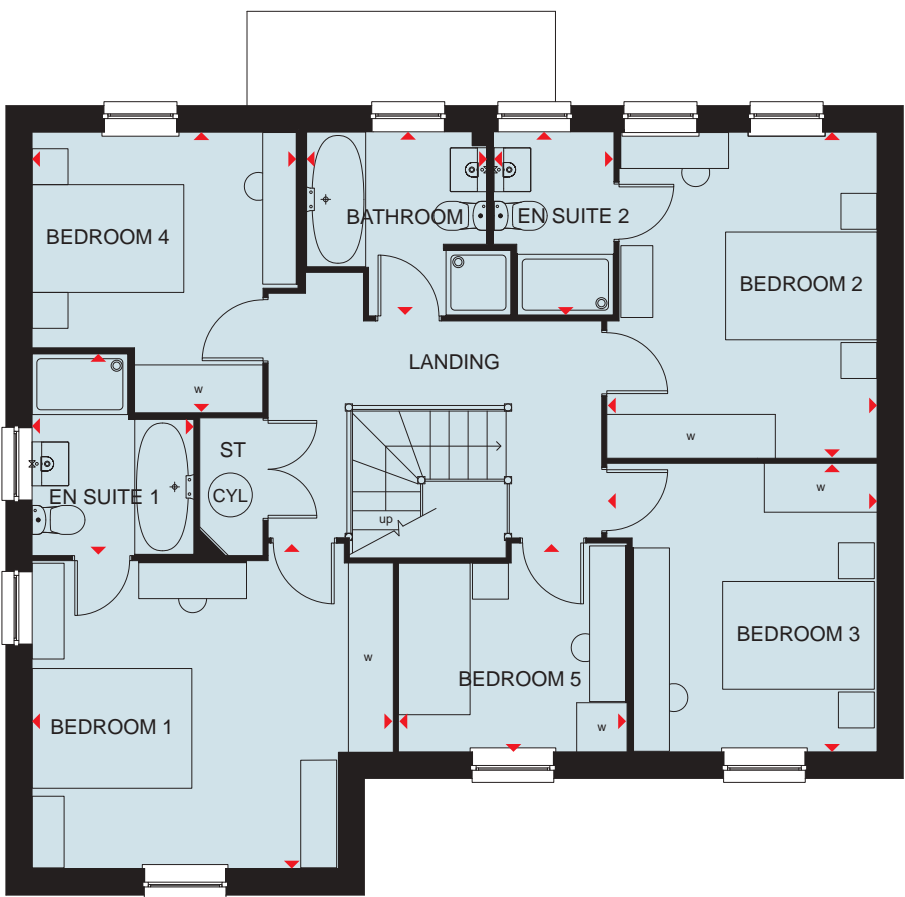
Flue Gas Heat Recovery System

Smart Thermostat

Features are plot specific. Please refer to working drawings.



| Ground Floor | | |
|--------------------------|----------------|---------------|
| Kitchen/Breakfast/Family | 6132 x 4378 mm | 20'8" x 14'4" |
| Utility | 2473 x 1713 mm | 8'1" x 5'7" |
| Dining room | 3885 x 3032 mm | 12'8" x 9'11" |
| Study | 3598 x 2449 mm | 11'9" x 8'0" |
| Lounge | 3598 x 5312 mm | 11'9" x 17'5" |
| WC | 960 x 1660 mm | 3'1" x 5'5" |



| First Floor | | |
|-------------|----------------|----------------|
| Bedroom 1 | 3885 x 3888 mm | 12'8" x 12'9" |
| En suite 1 | 2126 x 2540 mm | 6'11" x 8'4" |
| Bedroom 2 | 3258 x 4115 mm | 10'8" x 13'6" |
| En suite 2 | 1515 x 2395 mm | 4'11" x 7'10" |
| Bedroom 3 | 3093 x 3646 mm | 10'1" x 11'11" |
| Bedroom 4 | 3357 x 2732 mm | 11'0" x 8'11" |
| Bathroom | 2286 x 2395 mm | 7'6" x 7'10" |

| Key | | | | | | | | | |
|-----|--------|-----|-----------------------|-----|----------------------|----|--------------------|---|--------------------|
| B | Boiler | CYL | Cylinder | dw | Dishwasher space | td | Tumble dryer space | ↔ | Dimension location |
| ST | Store | wm | Washing machine space | f/f | Fridge/freezer space | w | Wardrobe space | | |

A2 specification.



DAVID WILSON HOMES

We are on the New Homes Quality Code register of registered developers. "We" refers to the Barratt Developments PLC group brands including Barratt London, Barratt Homes and David Wilson Homes. All images used are for illustrative purposes. The images and the dimensions given are illustrative for this house type and individual properties may differ. Please check with your Sales Adviser in respect of individual properties. We give maximum dimensions within each room which includes areas of fixtures and fittings including fitted furniture. These dimensions should not be used for carpet or flooring sizes, appliance spaces or items of furniture. All images, photographs, dimensions and energy efficiency features depicted are not intended to be relied upon for, nor to form part of, any contract unless specifically incorporated in writing into the contract. BDW004542/APR24