

CAISTEAL GARDENS

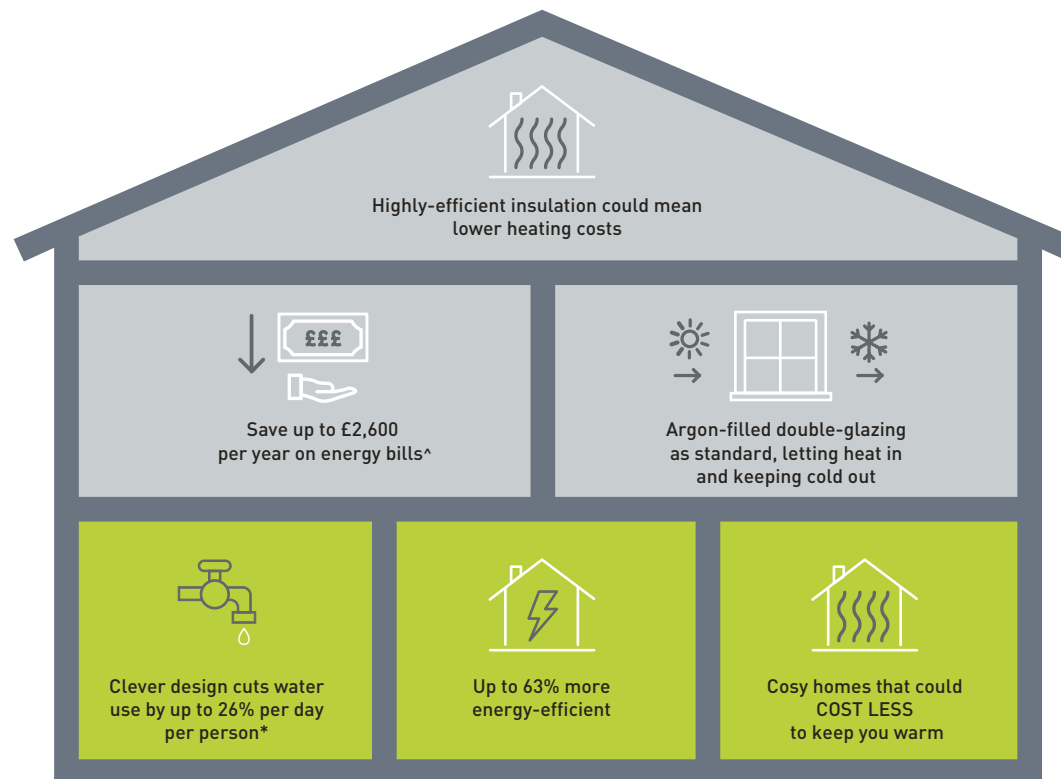
WINCHBURGH, WEST LoTHIAN



3 AND 4 BEDROOM HOMES

WE'RE HELPING TO MAKE YOUR HOME MORE ENERGY-EFFICIENT

We create low-carbon and efficient homes that are designed and built for better living and meet the challenges of the future.



[^]Indicative figures, based on HBF "Watt a Save" report published Feb 2023.

^{*}Source: [Water UK](#)

'We', 'our', 'us' refers to the Barratt Developments PLC Group brands including Barratt Homes, David Wilson Homes and Barratt London. Some of the features shown may not be available with every Barratt home or on every Barratt development. Please speak to a Sales Adviser for details of the features available on the home and development you are interested in. To find out more about the energy-efficiency and sustainability of our homes visit our website. All images used are for illustrative purposes only. Information correct at time of publishing.



OUTSTANDING DESIGN

**BARRATT HOMES ARE BUILT AROUND
THE WAY YOU WANT TO LIVE**

Careful consideration and attention to detail goes into every home we build, and our homes are flexible and adaptable to suit every lifestyle. Open plan living spaces are integral to our design, helping you make the most of space and natural light, and allowing every room to be enjoyed to its maximum potential.

We also know how vital outdoor space is in creating places people love to live in. Whether it's gardens or landscaped areas, we make sure there's plenty surrounding the homes we build, for the whole neighbourhood to enjoy.

AWARD-WINNING CUSTOMER SERVICE AND QUALITY

WITH YOU EVERY STEP OF THE WAY

Barratt Homes has years of experience building thoughtfully designed, high quality homes. We've repeatedly been awarded 5 stars[^] by the Home Builders Federation, year after year. And that's not all. Our homes come with an NHBC Buildmark Warranty which gives you a 10 year structural warranty and a 2 year fixtures and fittings warranty* as standard. This is just one of the added benefits of buying a new home.

We do all we can to make moving easy, putting people in touch with dedicated experts throughout the journey, which is why for more than 50 years, we have earned ourselves an enviable reputation for excellence.

At Barratt we build every type of home for every type of home buyer, in great locations the length and breadth of the country. Whether you're putting your first foot on the property ladder, moving up to a larger home or even downsizing, Barratt can help you find the home that suits you perfectly.



CAISTEAL GARDENS

DEVELOPMENT LAYOUT

KEY

	Coull	3 bedroom mid-terraced home
	Traquair	3 bedroom semi-detached home
	Thurso	3 bedroom semi-detached home
	Craigend	3 bedroom semi-detached home
	Abergeldie	3 bedroom end-terraced/semi-detached home
	Glamis	4 bedroom detached home
	Fenton	4 bedroom detached home
	Dunbar	4 bedroom detached home
	Dean	4 bedroom detached home
	Balmoral	4 bedroom detached home
	Balloch	4 bedroom detached home
	Cullen	4 bedroom detached home
	Crombie	4 bedroom detached home
	Stobo	4 bedroom detached home
	Affordable Housing	
	Electrical vehicle charging pillar	
	Features electrical vehicle charging point.	Speak to Sales Adviser for full details.
	Features enhanced gables.	Speak to Sales Adviser for full details.



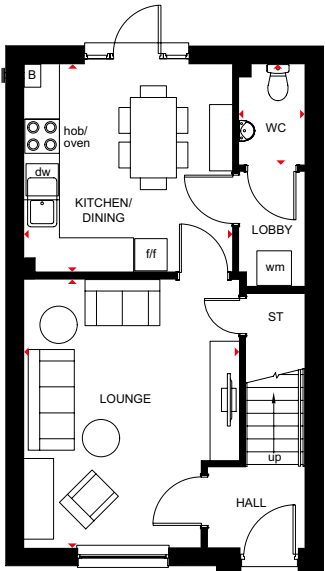
barratthomes.co.uk



3 BEDROOM MID-TERRACED HOME



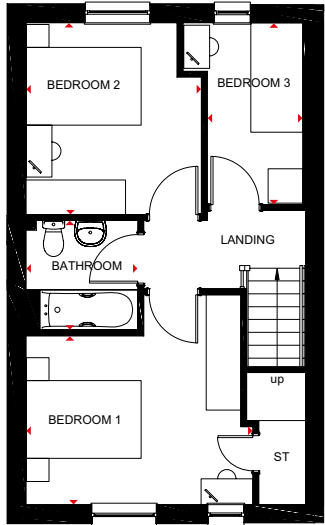
- Open-plan kitchen and dining area, with access to the rear garden, creates the ideal hub for all the family
- Separate lobby with practical utility space and cloakroom
- Front-aspect lounge, providing plenty of space to relax
- Upstairs are two double bedrooms, a single bedroom and family bathroom



Ground Floor

Lounge	3720 x 4650mm	12'2" x 15'3"
Kitchen/ Dining	3576 x 3588mm	11'9" x 11'9"
WC	1143 x 1743mm	3'9" x 5'9"

[Approximate dimensions]



First Floor

Bedroom 1	3944 x 3643mm	12'11" x 11'11"
Bedroom 2	3001 x 3329mm	9'10" x 10'11"
Bedroom 3	2081 x 3155mm	6'10" x 10'4"
Bathroom	1946 x 1900mm	6'5" x 6'3"

[Approximate dimensions]

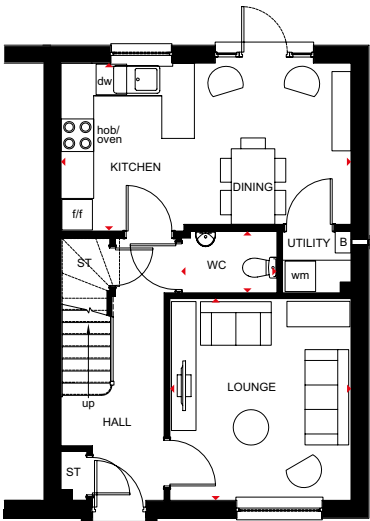
KEY	B	Boiler	t/f	Fridge/freezer space
	ST	Store	dw	Dishwasher space
	wm	Washing machine space	◀▶	Dimension location

TRAQUAIR

3 BEDROOM MID-TERRACED HOME



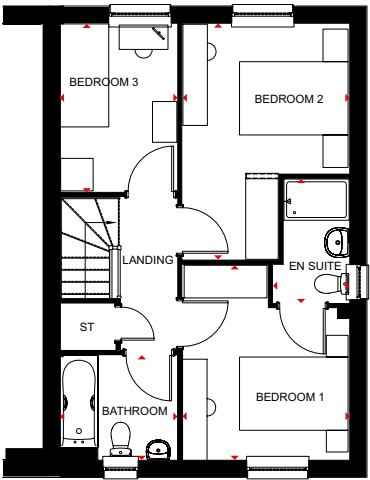
- Superb family home with open-plan kitchen flowing into the dining area with access to the reargarden
- Bright, front-aspect lounge, a cloakroom and practical utility/storage space complete the groundfloor
- Upstairs are two double bedrooms, the main with en suite, a single bedroom and family bathroom



Ground Floor

Lounge	3328 x 3707mm	10'11" x 12'2"
Kitchen/Dining	5330 x 3085mm	17'6" x 10'1"
WC	1750 x 1129mm	5'9" x 3'8"
Utility	1257 x 1129mm	4'1" x 3'8"

(Approximate dimensions)



First Floor

Bedroom 1	3068 x 3585mm	10'1" x 11'9"
En suite	1397 x 2280mm	4'7" x 7'6"
Bedroom 2	3068 x 4340mm	10'1" x 14'3"
Bedroom 3	2157 x 3091mm	7'1" x 10'2"
Bathroom	2157 x 1920mm	7'1" x 6'4"

(Approximate dimensions)
* Window may be omitted on certain plots. Speak to a Sales Adviser for details on individual plots.

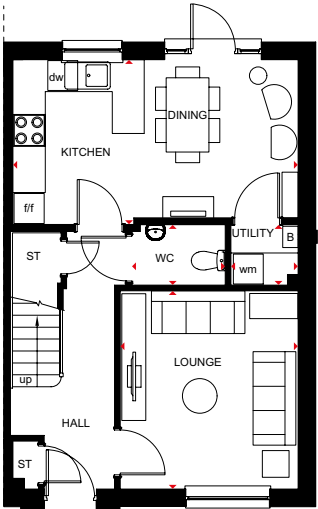
KEY	B	Boiler	f/f	Fridge/freezer space
	ST	Store	dw	Dishwasher space
	wm	Washing machine space	◀▶	Dimension location

THURSO

3 BEDROOM SEMI-DETACHED HOME



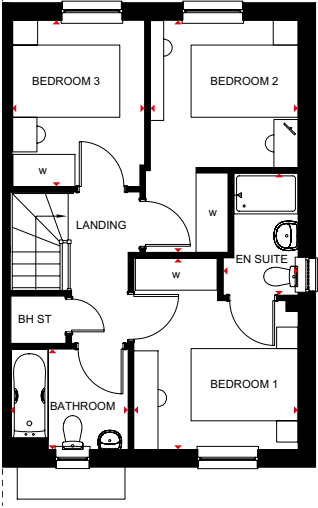
- Superb family home with the open-plan kitchen flowing into the dining area, with access to the rear garden
- Bright, front-aspect lounge, a cloakroom and practical utility and storage space complete the ground floor
- Upstairs are three double bedrooms, the main with en suite, and a family bathroom



Ground Floor

Lounge	3328 x 3707mm	10'11" x 12'2"
Kitchen/Dining	5330 x 3085mm	17'6" x 10'1"
WC	1750 x 1129mm	5'9" x 3'8"
Utility	1257 x 1129mm	4'1" x 3'8"

(Approximate dimensions)



First Floor

Bedroom 1	3068 x 3585mm	10'1" x 11'9"
En Suite	1397 x 2280mm	4'7" x 7'6"
Bedroom 2	2851 x 4340mm	9'4" x 14'3"
Bedroom 3	2464 x 3108mm	8'1" x 10'2"
Bathroom	2157 x 1882mm	7'1" x 6'2"

(Approximate dimensions)

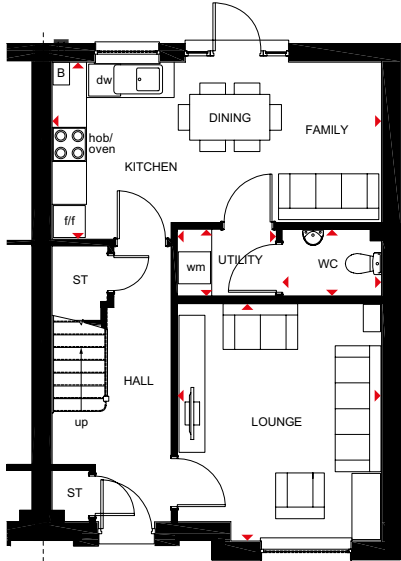
KEY	B	Boiler	f/f	Fridge/freezer space
	ST	Store	dw	Dishwasher space
	wm	Washing machine space	◀▶	Dimension location

CRAIGEND

3 BEDROOM SEMI-DETACHED HOME



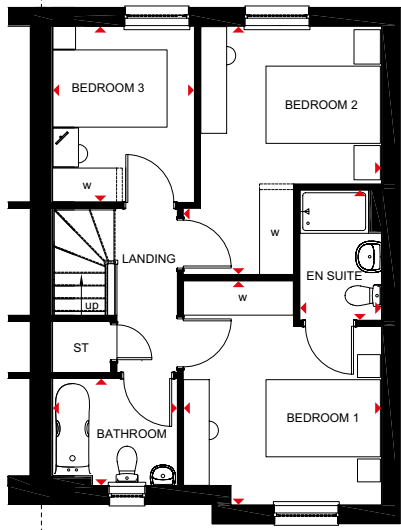
- Spacious open-plan kitchen with dining and family areas, and access to the rear garden and utility
- Bright, front-aspect lounge provides room for everyone to relax
- Plenty of storage space and a cloakroom complete the ground floor making this a practical family home
- Upstairs are three double bedrooms, the main with en suite, and a family bathroom



Ground Floor

Lounge	3565 x 4141mm	11'8" x 13'7"
Kitchen/ Family/Dining	5752 x 3082mm	18'10" x 10'1"
WC	1732 x 1161mm	5'8" x 3'10"
Utility	1728 x 1161mm	5'8" x 3'10"

[Approximate dimensions]



First Floor

Bedroom 1	3465 x 3923mm	11'4" x 12'10"
En Suite	1427 x 2280mm	4'8" x 7'6"
Bedroom 2	3465 x 4340mm	11'4" x 14'3"
Bedroom 3	2482 x 3114mm	8'2" x 10'3"
Bathroom	2182 x 1876mm	7'2" x 6'2"

[Approximate dimensions]

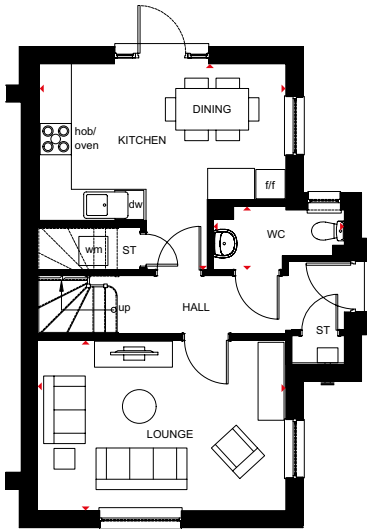
KEY	B	Boiler	f/f	Fridge/freezer space	◀▶	Dimension location
	ST	Store	dw	Dishwasher space		
	wm	Washing machine space	w	Wardrobe space		

ABERGELDIE

3 BEDROOM END-TERRACED/SEMI-DETACHED HOME



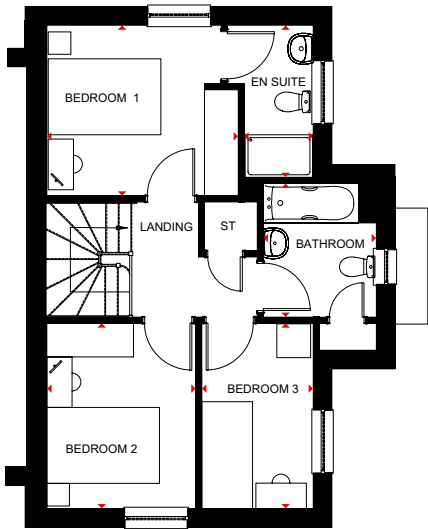
- Open-plan kitchen with dining area and access to the garden creates an ideal hub for living and entertaining
- Separate dual-aspect lounge provides a bright space for all the family to relax in comfort
- Upstairs is a main bedroom with en suite shower room, a further double bedroom, a single bedroom and a family bathroom



Ground Floor

Lounge	4772 x 3273mm	15'8" x 10'9"
Kitchen/Dining	4732 x 3969mm	15'6" x 13'0"
WC	2515 x 1227mm	8'3" x 4'0"

[Approximate dimensions]



First Floor

Bedroom 1	3401 x 3036mm	11'2" x 10'0"
En Suite	1529 x 2708mm	5'0" x 8'11"
Bedroom 2	2651 x 3296mm	8'8" x 10'10"
Bedroom 3	1979 x 3297mm	6'6" x 10'10"
Bathroom	2014 x 2967mm	6'7" x 9'9"

[Approximate dimensions]

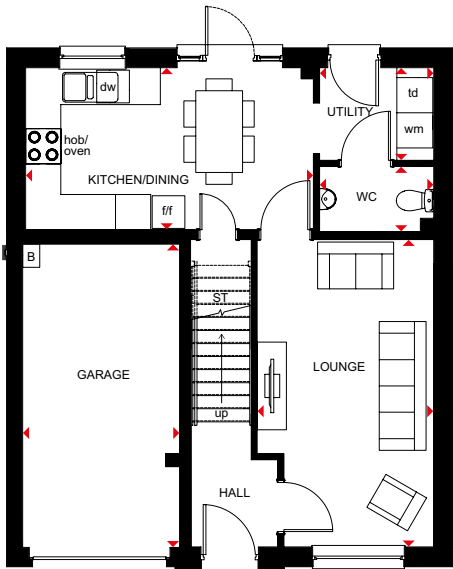
KEY	ST	Store	dw	Dishwasher space
	wm	Washing machine space	◀▶	Dimension location
	t/f	Fridge/freezer space		

GLAMIS

4 BEDROOM DETACHED HOME



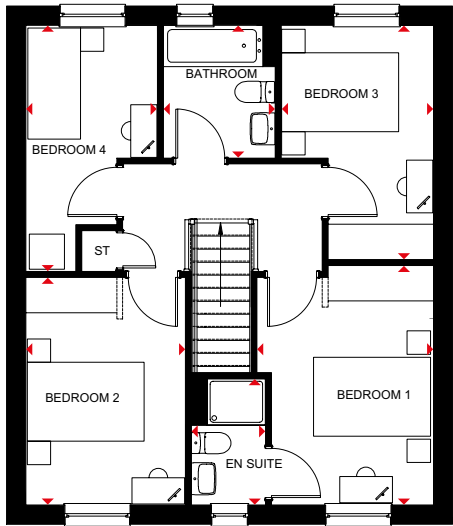
- This detached home features four bedrooms and large living spaces for you and your family
- The ground floor has an integral garage, a large lounge and open kitchen with dining area. A functional utility room leads to the family garden
- On the first floor you will find three double bedrooms and one single which can easily be used as a comfortable home office
- There's a family bathroom with bath, and the main bedroom is en suite



Ground Floor

Lounge	3015 x 5251mm	9'11" x 17'3"
Kitchen/ Dining	4919 x 2766mm	16'2" x 9'1"
WC	1948 x 1114mm	6'5" x 3'8"
Utility	1948 x 1592mm	6'5" x 5'3"
Garage	2681 x 5185mm	8'10" x 17'10"

(Approximate dimensions)



First Floor

Bedroom 1	3018 x 4098mm	9'11" x 13'5"
En Suite	1272 x 2165mm	4'2" x 7'1"
Bedroom 2	2727 x 3895mm	8'11" x 12'9"
Bedroom 3	2605 x 4009mm	8'7" x 13'2"
Bedroom 4	2251 x 4212mm	7'5" x 13'10"
Bathroom	1916 x 2272mm	6'3" x 7'5"

(Approximate dimensions)

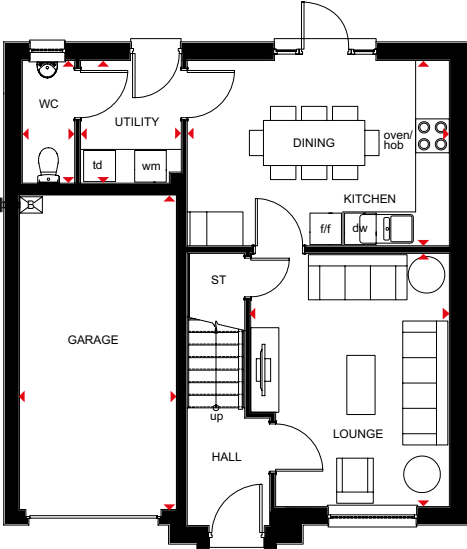
KEY	B Boiler	f/f Fridge/freezer space	◀▶ Dimension location
	ST Store	dw Dishwasher space	
	wm Washing machine space	td Tumble dryer space	

FENTON

4 BEDROOM DETACHED HOME



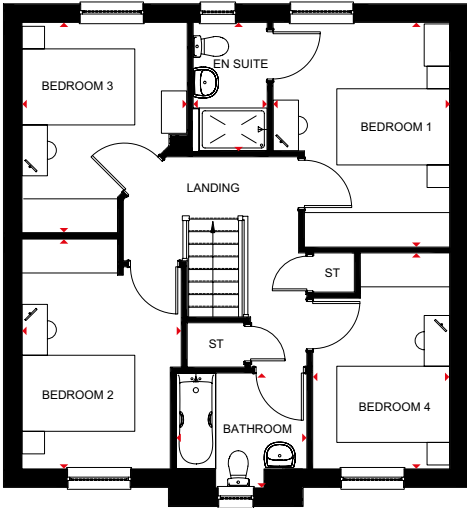
- Large, front-aspect lounge with room for relaxing and entertaining
- Open-plan fitted kitchen with dining area and access to the rear garden, plus a separate utility room and WC
- Integral garage for added convenience and security
- First floor comprises four double bedrooms, the main bedroom with en suite, and a family bathroom



Ground Floor

Lounge	3527 x 4483mm	11'7" x 14'8"
Kitchen/Dining	4652 x 3280mm	15'3" x 10'9"
Utility	1789 x 2141mm	5'10" x 7'0"
WC	929 x 2141mm	3'1" x 7'0"
Garage	2789 x 5520mm	9'2" x 18'1"

[Approximate dimensions]



First Floor

Bedroom 1	3129 x 3984mm	10'3" x 13'1"
En Suite	1313 x 2279mm	4'4" x 7'6"
Bedroom 2	2823 x 4074mm	9'3" x 13'4"
Bedroom 3	2929 x 3729mm	9'7" x 12'3"
Bedroom 4	2426 x 3829mm	8'0" x 12'7"
Bathroom	2316 x 2038mm	7'7" x 6'8"

[Approximate dimensions]

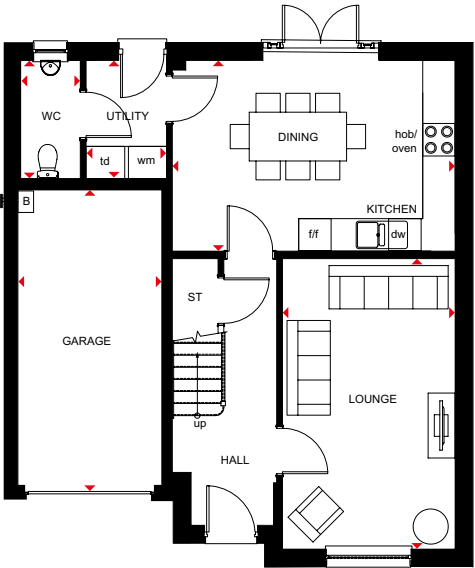
KEY	B	Boiler	t/f	Fridge/freezer space	◀▶	Dimension location
	ST	Store	dw	Dishwasher space		
	wm	Washing machine space	td	Tumble dryer space		

DUNBAR

4 BEDROOM DETACHED HOME



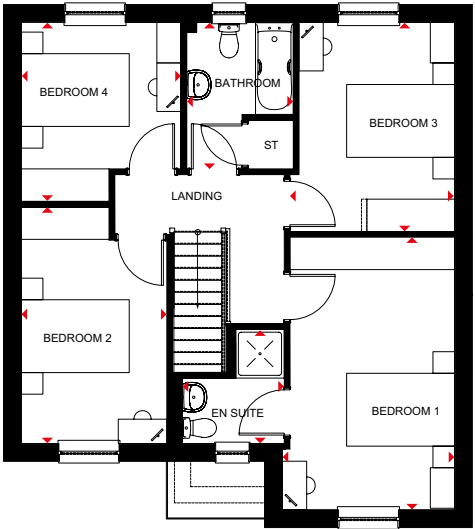
- Spacious kitchen with dining area, separate utility, WC, and access to the rear garden via French doors
- Front-aspect lounge and an integral garage for added security complete the ground floor
- Upstairs are four double bedrooms, the main bedroom with en suite, and a family bathroom, making this a perfect family home



Ground Floor

Lounge	3203 x 5351mm	10'6" x 17'7"
Kitchen/Dining	5226 x 3535mm	17'2" x 11'7"
Utility	1477 x 2146mm	4'10" x 7'0"
WC	1103 x 2146mm	3'7" x 7'0"
Garage	2652 x 5391mm	8'8" x 17'8"

(Approximate dimensions)



First Floor

Bedroom 1	3192 x 5052mm	10'6" x 16'7"
En suite	1887 x 2113mm	6'2" x 6'11"
Bedroom 2	2697 x 4384mm	8'10" x 14'5"
Bedroom 3	3057 x 3875mm	10'0" x 12'9"
Bedroom 4	2961 x 3315mm	9'9" x 10'11"
Bathroom	1975 x 2715mm	6'6" x 8'11"

(Approximate dimensions)

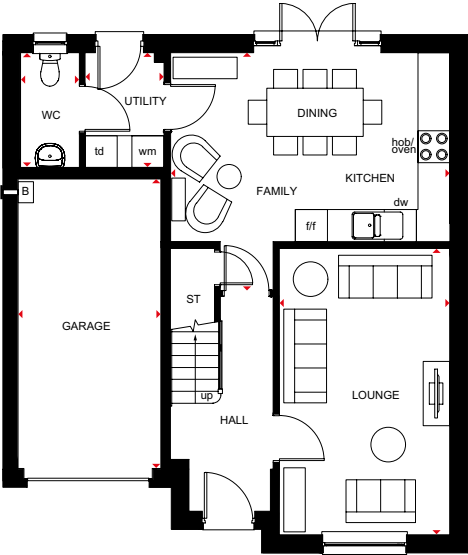
KEY	B	Boiler	wm	Washing machine space	td	Tumble dryer space
	ST	Store	f/f	Fridge/freezer space	◀▶	Dimension location
	CYL	Cylinder	dw	Dishwasher space		

DEAN

4 BEDROOM DETACHED HOME



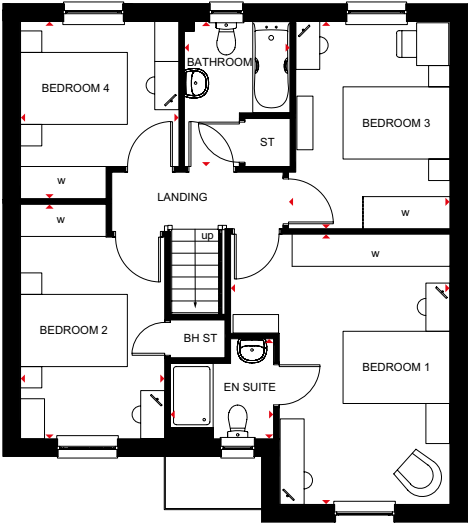
- Spacious kitchen with dining and family areas, separate utility, WC, and access to the garden via French doors
- Front-aspect lounge and an integral garage for added security complete the ground floor
- Upstairs are four double bedrooms, the main bedroom with en suite, and a family bathroom



Ground Floor

Lounge	3203 x 5351mm	10'6" x 17'7"
Kitchen/Dining/ Family	5226 x 4450mm	17'2" x 14'7"
Utility	1480 x 2146mm	4'10" x 7'0"
WC	1100 x 2146mm	3'7" x 7'0"
Garage	2673 x 5411mm	8'9" x 17'9"

[Approximate dimensions]



First Floor

Bedroom 1	4103 x 5052mm	13'6" x 16'7"
En Suite	1932 x 1868mm	6'4" x 6'2"
Bedroom 2	2697 x 4384mm	8'10" x 14'5"
Bedroom 3	3018 x 3875mm	9'11" x 12'9"
Bedroom 4	2961 x 3315mm	9'9" x 10'11"
Bathroom	1975 x 2715mm	6'6" x 8'11"

[Approximate dimensions]

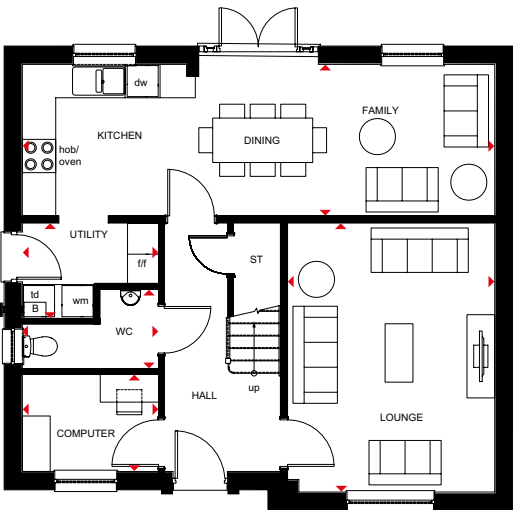
KEY	B Boiler	wm Washing machine space	td Tumble dryer space
	ST Store	f/f Fridge/freezer space	w Wardrobe space
	BH ST Bulkhead store	dw Dishwasher space	◀▶ Dimension location

BALMORAL

4 BEDROOM DETACHED HOME



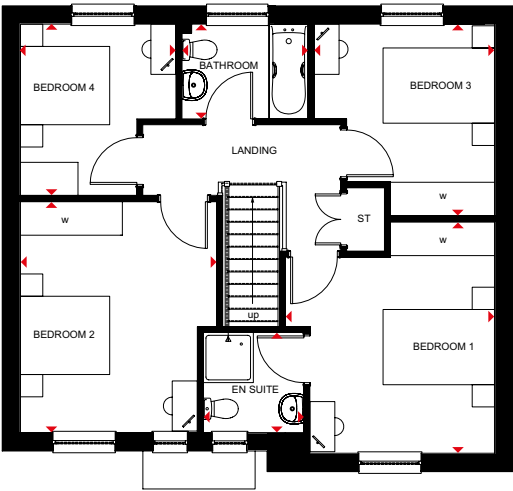
- Spacious, front-aspect lounge with room for all the family to relax
- Large open-plan fitted kitchen with dining and family areas and French doors leading to the rear garden
- Ground floor includes separate utility area, WC and computer room
- First floor comprises four double bedrooms, the main bedroom with en suite, and a family bathroom



Ground Floor

Lounge	3741 x 4843mm	12'3" x 15'11"
Kitchen/ Dining/Family	8502 x 2726mm	27'11" x 8'11"
WC	2449 x 1430mm	8'0" x 4'8"
Utility	2449 x 1717mm	8'0" x 5'8"
Computer	2449 x 1746mm	8'0" x 5'9"

[Approximate dimensions]



First Floor

Bedroom 1	3763 x 4146mm	12'4" x 13'7"
En Suite	1808 x 1767mm	5'11" x 5'10"
Bedroom 2	3509 x 4151mm	11'6" x 13'7"
Bedroom 3	3115 x 3436mm	10'3" x 11'3"
Bedroom 4	2978 x 3071mm	9'9" x 10'1"
Bathroom	2200 x 1698mm	7'3" x 5'7"

[Approximate dimensions]

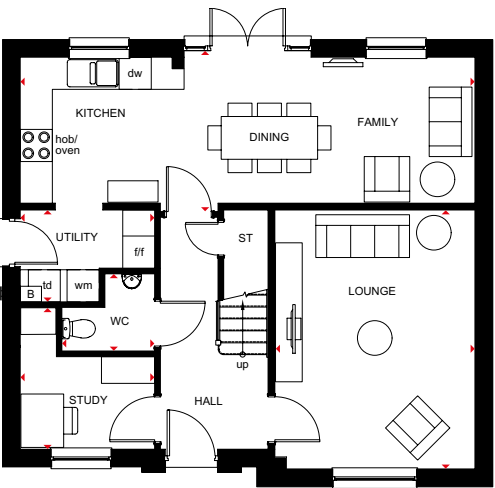
KEY	B Boiler	w Wardrobe space	td Tumble dryer space
	ST Store	f/f Fridge/freezer space	◀▶ Dimension location
	wm Washing machine space	dw Dishwasher space	

BALLOCH

4 BEDROOM DETACHED HOME



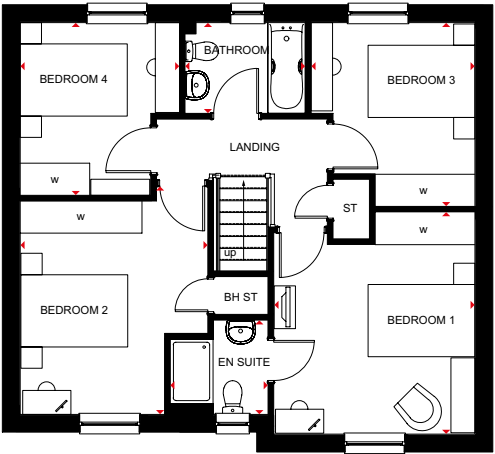
- Beautifully presented family home, fully designed for flexible living
- As you enter the home, you will find the study, WC and large front-aspect lounge off the main hallway
- Open-plan kitchen complete with dining space, family area and utility at the back of the home, with glazed double doors opening out onto the outdoor space
- Upstairs has four corner double bedrooms, complete with one en suite and a main bathroom



Ground Floor

Lounge	3741 x 4843mm	12'3" x 15'11"
Kitchen/ Dining/Family	8502 x 2886mm	27'11" x 9'6"
WC	1734 x 1445mm	5'8" x 4'9"
Utility	2515 x 1717mm	8'3" x 5'8"
Study	2514 x 2651mm	8'3" x 8'8"

[Approximate dimensions]



First Floor

Bedroom 1	3763 x 4156mm	12'4" x 13'8"
En Suite	1830 x 1767mm	6'0" x 5'10"
Bedroom 2	3509 x 4271mm	11'6" x 14'0"
Bedroom 3	3065 x 3436mm	10'1" x 11'3"
Bedroom 4	2978 x 3231mm	9'9" x 10'7"
Bathroom	2250 x 1698mm	7'5" x 5'7"

[Approximate dimensions]

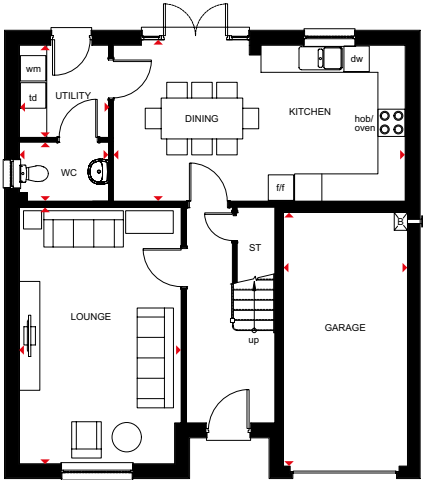
KEY	B	Boiler	wm	Washing machine space	td	Tumble dryer space
	ST	Store	f/f	Fridge/freezer space	w	Wardrobe space
	BH ST	Bulkhead store	dw	Dishwasher space	▶	Dimension location

CULLEN

4 BEDROOM DETACHED HOME



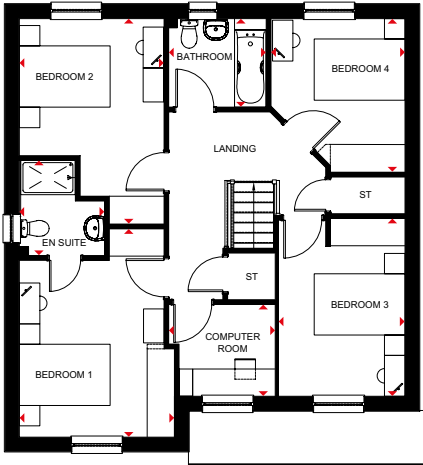
- Exceptional family home designed for flexible, modern living
- Spacious open-plan kitchen and dining area with French doors leading to the rear garden, and a separate utility room and WC
- Generous lounge has room to relax, while an integral garage provides added security
- Upstairs are four double bedrooms – the main with en suite – a family bathroom, and a computer room/study



Ground Floor

Lounge	3564 x 5653mm	11'8" x 18'7"
Kitchen/Dining	6432 x 3430mm	21'1" x 11'3"
Utility	1963 x 2025mm	6'5" x 6'8"
WC	1963 x 1300mm	6'5" x 4'3"
Garage	2737 x 5592mm	9'0" x 18'4"

(Approximate dimensions)



First Floor

Bedroom 1	3417 x 4589mm	11'3" x 15'1"
En Suite	1878 x 2100mm	6'2" x 6'11"
Bedroom 2	3178 x 4532mm	10'5" x 14'10"
Bedroom 3	2786 x 3919mm	9'11" x 12'10"
Bedroom 4	2952 x 3388mm	9'8" x 11'1"
Computer Room	2321 x 2023mm	7'7" x 6'8"
Bathroom	2150 x 1954mm	7'1" x 6'5"

(Approximate dimensions)

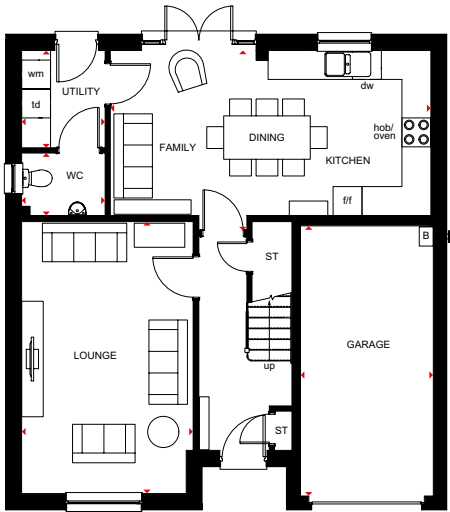
KEY	B Boiler	f/f Fridge/freezer space	◀▶ Dimension location
	ST Store	dw Dishwasher space	
	wm Washing machine space	td Tumble dryer space	

CROMBIE

4 BEDROOM DETACHED HOME



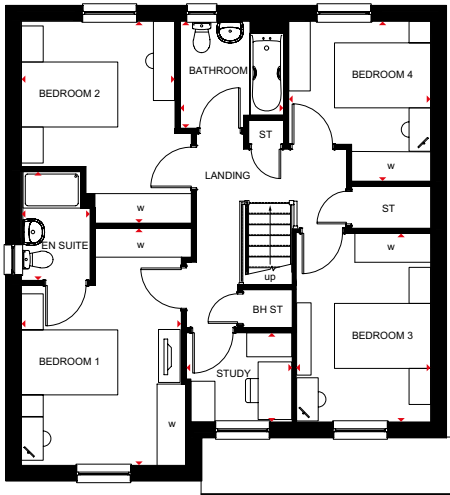
- Impressive four bedroom detached home, ideal for new or growing families
- A comfortable front-facing living room offset from the hallway
- Light and airy all-in-one kitchen and dining area opens out onto the rear garden, with a separate utility and WC
- Upstairs offers one main bedroom and en suite, three double bedrooms, a family bathroom and study



Ground Floor

Lounge	3564 x 5653mm	11'8" x 18'7"
Kitchen/Dining/Family	6658 x 3430mm	21'10" x 11'3"
Utility	1737 x 2025mm	5'8" x 6'8"
WC	1737 x 1300mm	5'8" x 4'3"
Garage	2758 x 5612mm	9'1" x 18'5"

[Approximate dimensions]



First Floor

Bedroom 1	3417 x 4924mm	11'3" x 16'2"
En Suite	1422 x 2260mm	4'8" x 7'5"
Bedroom 2	3527 x 4197mm	11'7" x 13'9"
Bedroom 3	2786 x 3919mm	9'2" x 12'10"
Bedroom 4	2952 x 3323mm	9'8" x 10'11"
Study	2192 x 1853mm	7'2" x 6'1"
Bathroom	2150 x 2224mm	7'1" x 7'4"

[Approximate dimensions]

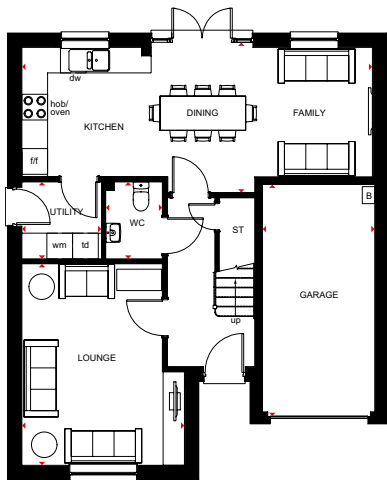
KEY	B Boiler	wm Washing machine space	td Tumble dryer space
	ST Store	f/f Fridge/freezer space	w Wardrobe space
	BH ST Bulkhead store	dw Dishwasher space	◀▶ Dimension location

STOB0

4 BEDROOM DETACHED HOME



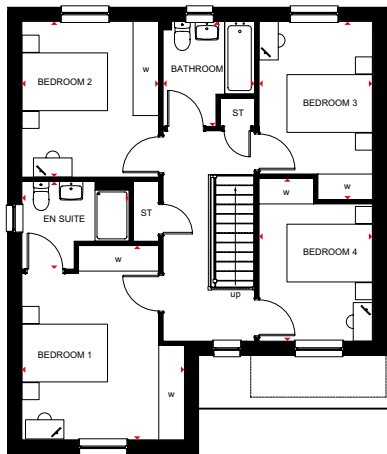
- Ideal family home with generously sized rooms for flexible living
- Stylish open-plan kitchen/dining/family area with access to the rear garden, and a separate utility room and WC
- Spacious lounge for everyone to relax in and an integral garage for added security
- Four double bedrooms, with an en suite shower room to the main bedroom



Ground Floor

Lounge	3800 x 4714mm	12'6" x 15'6"
Kitchen/ Dining/Family	8195 x 3401mm	26'11" x 11'2"
Utility	1858 x 1798mm	6'1" x 5'11"
WC	1325 x 1798mm	4'4" x 5'11"
Garage	2624 x 5316mm	8'7" x 17'5"

[Approximate dimensions]



First Floor

Bedroom 1	3800 x 4543mm	12'6" x 14'11"
En Suite	2508 x 2048mm	8'3" x 6'9"
Bedroom 2	3200 x 3641mm	10'6" x 11'11"
Bedroom 3	2652 x 4166mm	8'8" x 13'8"
Bedroom 4	2652 x 3808mm	8'8" x 12'6"
Bathroom	2143 x 2456mm	7'0" x 8'1"

[Approximate dimensions]

KEY	B Boiler	f/f Fridge/freezer space	w Wardrobe space
	ST Store	dw Dishwasher space	◆ Dimension location
	wm Washing machine space	td Tumble dryer space	

CUSTOMER SERVICE BY BARRATT HOMES

BUILDING OUR CUSTOMER SERVICE TO BE THE BEST

At Barratt we are genuinely committed to delivering the highest standards of customer service. The same exacting standards that have helped us win more quality awards than any other major housebuilder also ensure we look after our customers as well as we possibly can.

We believe that solid foundations are as important to a customer relationship as they are to a building. During the planning and design process we go to great lengths to make sure the homes and developments we build are perfectly in tune with the needs and aspirations of their prospective owners.

Our Directors carry out weekly site inspections before, during and after the build process. As your home is built, it is checked at every stage to ensure it reaches the exacting standards we demand.

Our Customer Service Charter lays out our commitments to you and details the care, support and assistance we'll provide you with throughout your purchase and long after you've moved in.

As a result of the outstanding service we provide to our customers, we have been awarded the exceptional accreditation of "5 Star Builder" by the independent Home Builders Federation. 29,000 homebuyers across the country took part in the survey and this honour recognises the highest levels of positive recommendation by our customers, as well as the superior build quality of our homes.



5 GREAT REASONS TO BUY WITH BARRATT

1. 5 Stars for Customer Satisfaction

No other major national housebuilder** has been awarded a Home Builders Federation 5 Star Housebuilder accolade every year since 2010. All thanks to positive recommendations by our customers.

2. Building homes for over 5 decades

We've been established for over 5 decades and in that time have built over 300,000 new homes. Our commitment to quality and innovation is shown in the highest standards of design, construction, finish and the customer service we provide.

3. Award winners, time and time again

Our steadfast commitment to quality has ensured that for the tenth year in a row our site managers have picked up more awards than any other housebuilder, winning NHBC Pride in the Job awards for their workmanship and demonstrating our dedication and commitment to building homes of the very highest standard.

4. Creating places where you'll love to live both inside and out

Our light, open-plan properties are really adaptable – every room can suit a variety of lifestyles. Whether you want space for the kids to play or more room to entertain friends, our fantastic range of homes can give you that flexibility.

We also know our customers love green open spaces and we go to great lengths to maintain and enhance the local environment on our developments. In fact, we plant an average of 20 shrubs or trees for each home we build, creating a beautiful and sustainable environment to live in.

5. Our energy efficient homes could save you money

Every home we build is sustainable and energy efficient – minimising their impact on the environment, whilst reducing your energy costs too. Our homes could save you money by being 45% to 55% more energy efficient than a same sized older home – even after it's been modernised. As a result, you could save a staggering £1,312*** per year on your energy bill.

Find out more, talk to one of our Sales Advisers today.



Images may include optional upgrades at additional cost. All information in this document is correct to the best of our knowledge at the time of going to print. Caisteal Gardens is a marketing name only and may not be the designated postal address, which may be determined by The Post Office. "we" refers to the Barratt Developments PLC group brands. "We" are the only major national housebuilder to be awarded this [key industry] award 10 years running. **Refers to the Barratt Developments PLC Group brands. ***Costs based upon the comparison of a new build four-bed detached house built to 2010 regulations vs. Victorian property upgraded with modern-day improvements. An upgraded Victorian home means one which has the following improvements over original build specification: 200mm loft insulation, double glazing to half of all windows, a 72% efficient (non-condensing) gas boiler and insulated hot water cylinder. Source: Zero Carbon Hub and NHBC Foundation 2012.

NEW HOMES QUALITY CODE

Housebuilders and developers who build new homes will be expected to register with the New Homes Quality Board (NHQB). As long as a housebuilder or developer has followed the correct registration process, including completing the necessary training, introducing a complaints procedure, and following other processes and procedures that are needed to meet the requirements of this New Homes Quality Code (the code), they will become a registered developer.

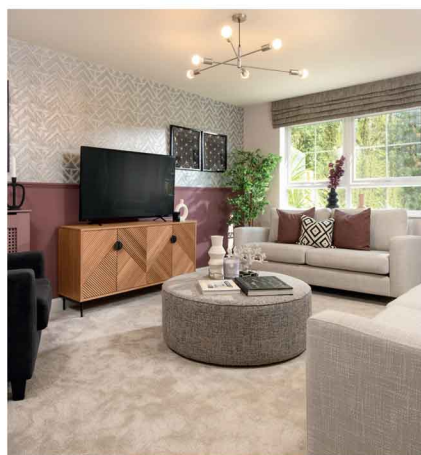
Registered developers agree to follow the code and the New Homes Ombudsman Service, including accepting the decisions of the New Homes Ombudsman in relation to dealings with customers. If a registered developer does not meet the required standards, or fails to accept and act in line with the decisions of the New Homes Ombudsman, they may have action taken against them, including being removed from the register of registered developers.

The code sets out the requirements that registered developers must meet. The code may be updated from time to time to reflect changes to industry best practice as well as the decisions of the New Homes Ombudsman Service.

All homes built by registered developers must meet building-safety and other regulations. All registered developers should aim to make sure there are no snags or defects in their properties before the keys are handed over to a customer. If there are any snags or defects, these should be put right within the agreed timescales.

WHAT THE CODE COVERS

For the purposes of this code, 'customer' means a person who is buying or intends to buy a new home which they will live in or give to another person. (If a new home is being bought in joint names, 'the customer' includes all the joint customers.) However, the New Homes Quality Board have also started work to consider other groups of customers and what they should be able to expect from a new home. This includes shared owners and people who are buying a new home to let to other people. Any changes the New Homes Quality Board make to the code to reflect the needs of other groups of customers will be developed through consultation, and they will continually assess and review the effectiveness of the code, and any new laws or regulations that apply. Other areas which are not covered by the code are claims for loss of property value or blight (where a property falls in value or becomes difficult to sell because of major public work in the area), personal injury or claims that are not covered by the scheme rules of the New Homes Ombudsman Service.



barratthomes.co.uk
0333 355 8460



Calls to 03 numbers are charged at the same rate as dialling an 01 or 02 number. If your fixed line or mobile service has inclusive minutes to 01/02 numbers, then calls to 03 are counted as part of this inclusive call volume. Non-BT customers and mobile phone users should contact their service providers for information about the cost of calls.