

HEATHER CROFT

PICKERING

EXPERIENCE

— THE DAVID WILSON DIFFERENCE —

At David Wilson Homes, we have been building quality homes across the UK for over 40 years. Our reputation is founded on our commitment to providing traditional homes in desirable locations built to a superb specification.

We are delighted to have received over 90% homeowner recommendation* since 2010. This accolade recognises our commitment to bringing you beautiful new homes.

We would encourage you to come and experience the David Wilson Difference and we look forward to seeing you at Heather Croft.

*Based on HBF star rating scheme from 2010 to 2022 derived from the NHBC national new homes survey (at eight weeks), over 90% of Barratt Developments PLC group customers would recommend our brands to a friend. http://www.hbf.co.uk/fileadmin/documents/members/FactSheets/HBF_fact_sheets_web.pdf



DAVID WILSON HOMES

WHERE QUALITY LIVES

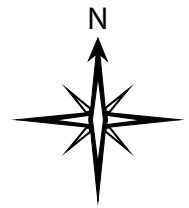
HEATHER CROFT

PICKERING

-  The Winstone
4 Bedroom Home
-  The Holden
4 Bedroom Home
-  The Avondale
4 Bedroom Home
-  The Bradgate
4 Bedroom Home
-  The Hertford
4 Bedroom Home
-  The Millford
4 Bedroom Home
-  The Abbeydale
3 Bedroom Home
-  The Hadley
3 Bedroom Home
-  The Ashurst
3 Bedroom Home
-  The Archford
3 Bedroom Home
-  The Burleigh
2 Bedroom Home
-  Affordable Housing

S/S Sub Station

V Visitor Parking Space



dwh.co.uk



DAVID WILSON HOMES
WHERE QUALITY LIVES

THE ARCHFORD

THREE BEDROOM TERRACED HOME



Individual plots may vary, please speak to the Sales Adviser



A bright family home, The Archford has a stylish open-plan kitchen and dining area, with French doors opening out onto the rear garden – creating the option for even more living space in good weather. A lobby separates the

kitchen and the spacious lounge, with stairs leading to the first floor. Here, the main bedroom has its own en suite. This attractive mid-terraced home is completed by a further double bedroom, a single bedroom and a family bathroom.



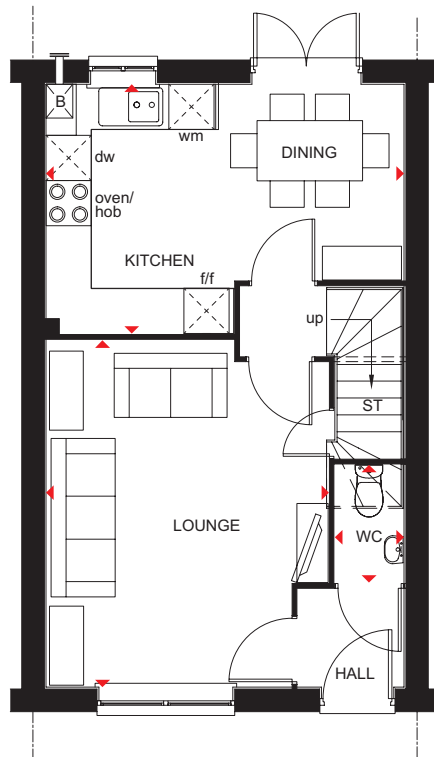
DAVID WILSON HOMES
WHERE QUALITY LIVES

THE ARCHFORD

THREE BEDROOM TERRACED HOME

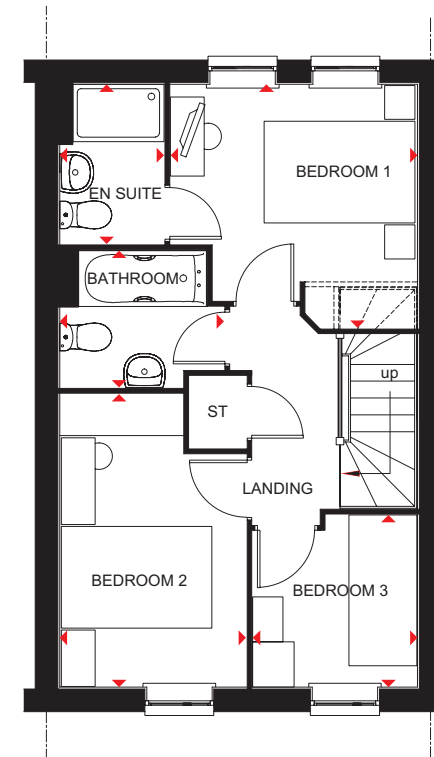
Key

B	Boiler	wm	Washing machine space
ST	Store	dw	Dishwasher space
f/f	Fridge/freezer space	◀▶	Dimension location



Ground Floor

Lounge	4604 x 3746 mm	15'1" x 12'3"
Kitchen/Dining	4750 x 3310 mm	15'7" x 10'10"
WC	1561 x 915 mm	5'1" x 3'0"



First Floor

Bedroom 1	3235 x 3276 mm	10'7" x 10'9"
En suite	1385 x 2119 mm	4'7" x 6'11"
Bedroom 2	2475 x 3891 mm	8'1" x 12'9"
Bedroom 3	2286 x 2186 mm	7'6" x 7'2"
Bathroom	1815 x 2181 mm	5'11" x 7'2"

All images used are for illustrative purposes. These and the dimensions given are illustrative for this house type and individual properties may differ. Please check with your Sales Adviser in respect of individual properties. We give maximum dimensions within each room which includes areas of fixtures and fittings including fitted furniture. These dimensions should not be used for carpet or flooring sizes, appliance spaces or items of furniture. All images, photographs and dimensions are not intended to be relied upon for, nor to form part of, any contract unless specifically incorporated in writing into the contract.

BDW001914/OCT22



THE ASHURST

THREE BEDROOM HOME



Individual plots may vary, please speak to the Sales Adviser



The Ashurst home is all about convenience. Its large, open-plan, dual-aspect kitchen, with stylish units and space for all the essential appliances, incorporates the dining area. French doors in the separate lounge lead into the back garden, providing a natural flow

of extended living space during good weather. Upstairs are two double bedrooms, the expansive main bedroom with en suite, as well as a single bedroom and family bathroom.



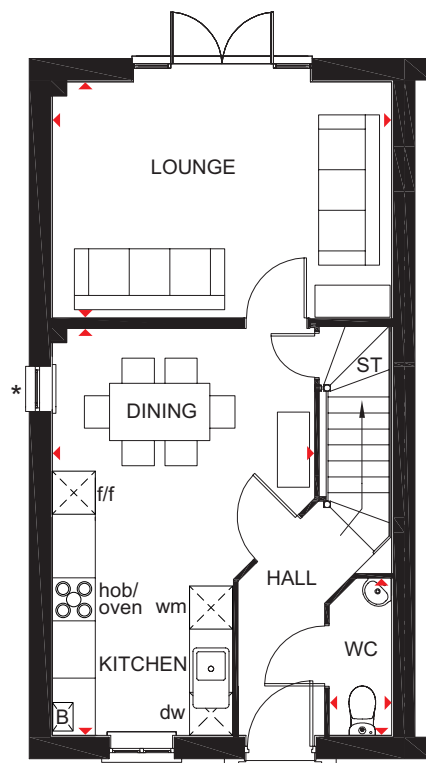
DAVID WILSON HOMES
WHERE QUALITY LIVES

THE ASHURST

THREE BEDROOM HOME

Key

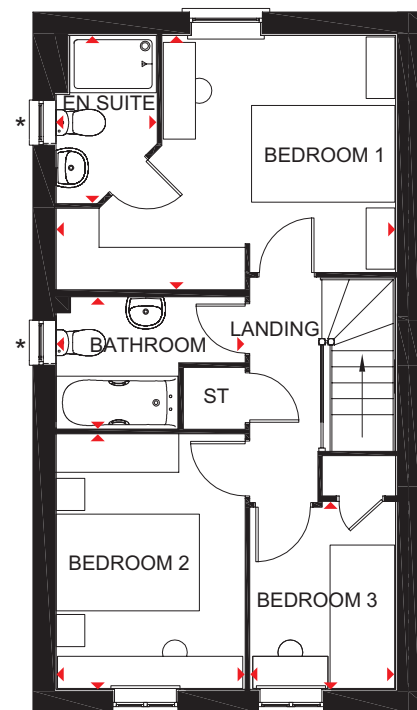
B	Boiler	wm	Washing machine space
ST	Store	dw	Dishwasher space
f/f	Fridge/freezer space	◄►	Dimension location



Ground Floor

Kitchen/Dining	5684 x 3651 mm	18'7" x 11'11"
Lounge	4740 x 3296 mm	15'6" x 10'9"
WC	2185 x 861 mm	7'2" x 3'9"

*Window may be omitted on certain plots. Speak to a Sales Adviser for details on individual plots.



First Floor

Bedroom 1	4740 x 3540 mm	15'6" x 11'7"
En suite	2339 x 1400 mm	7'8" x 4'7"
Bedroom 2	3556 x 2626 mm	11'8" x 8'7"
Bedroom 3	2531 x 2025 mm	8'3" x 6'7"
Bathroom	2626 x 1825 mm	8'7" x 6'0"

*Window may be omitted on certain plots. Speak to a Sales Adviser for details on individual plots.

All images used are for illustrative purposes. These and the dimensions given are illustrative for this house type and individual properties may differ. Please check with your Sales Adviser in respect of individual properties. We give maximum dimensions within each room which includes areas of fixtures and fittings including fitted furniture. These dimensions should not be used for carpet or flooring sizes, appliance spaces or items of furniture. All images, photographs and dimensions are not intended to be relied upon for, nor to form part of, any contract unless specifically incorporated in writing into the contract. BDW001914/OCT22



THE HADLEY

THREE BEDROOM END-TERRACED HOME



Individual plots may vary, please speak to the Sales Adviser



The end-terraced Hadley is designed very much for modern living, with its open-plan kitchen, dining and family areas providing flexible space. French doors access the rear garden and make the whole room bright and airy, while a separate utility room adds a practical note. The spacious

dual-aspect lounge meanwhile provides the perfect place to relax. Upstairs are two double bedrooms – the large main bedroom with en suite – a single bedroom and the family bathroom.



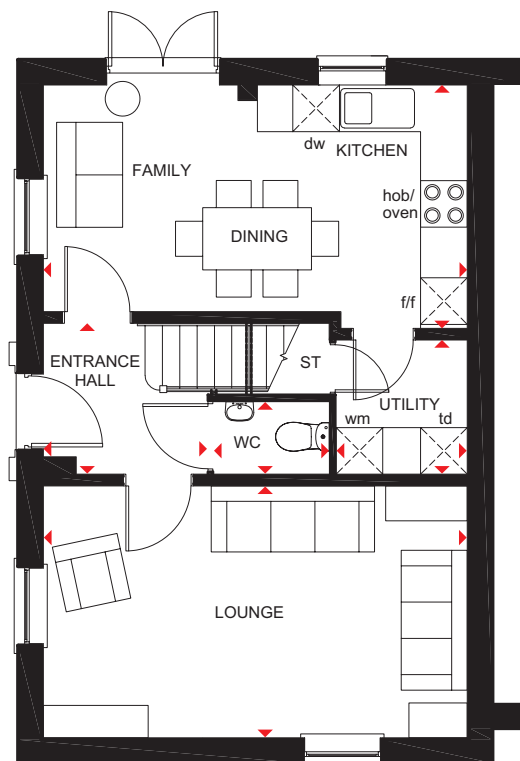
DAVID WILSON HOMES
WHERE QUALITY LIVES

THE HADLEY

THREE BEDROOM END-TERRACED HOME

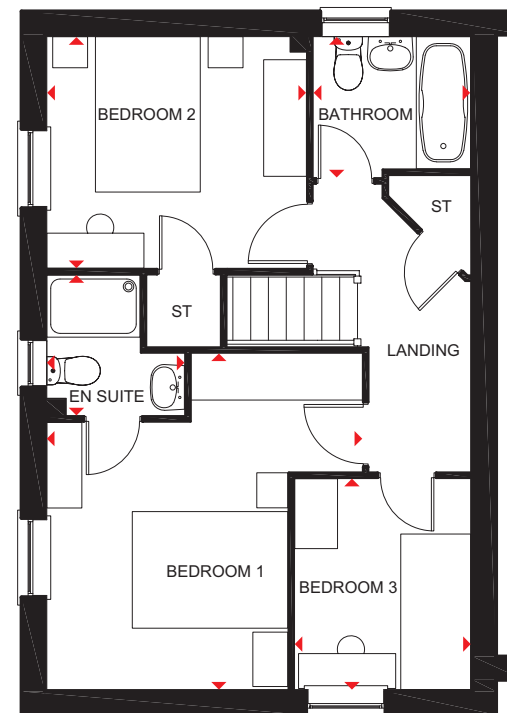
Key

ST	Store	dw	Dishwasher space
f/f	Fridge/freezer space	td	Tumble dryer space
wm	Washing machine space	◀▶	Dimension location



Ground Floor

Lounge	5455 x 3242 mm	17'11" x 10'8"
Kitchen/Family/Dining	5455 x 3131 mm	17'11" x 10'3"
Utility	1727 x 1687 mm	5'8" x 5'6"
WC	1485 x 932 mm	4'10" x 3'1"
Entrance Hall	2105 x 1941 mm	6'10" x 6'4"



First Floor

Bedroom 1	4324 x 4058 mm	14'2" x 13'3"
En Suite	1806 x 1771 mm	5'11" x 5'9"
Bedroom 2	3341 x 2978 mm	11'0" x 9'9"
Bedroom 3	2713 x 2265 mm	8'11" x 7'5"
Bathroom	2025 x 1811 mm	6'8" x 6'0"

All images used are for illustrative purposes. These and the dimensions given are illustrative for this house type and individual properties may differ. Please check with your Sales Adviser in respect of individual properties. We give maximum dimensions within each room which includes areas of fixtures and fittings including fitted furniture. These dimensions should not be used for carpet or flooring sizes, appliance spaces or items of furniture. All images, photographs and dimensions are not intended to be relied upon for, nor to form part of, any contract unless specifically incorporated in writing into the contract. BDW001914/OCT22



THE HADLEY

THREE BEDROOM DETACHED HOME



Individual plots may vary, please speak to the Sales Adviser



The sash-style windows give this detached home a delightfully traditional look. Yet inside, the open-plan kitchen – with its dining and family areas and separate utility room – is designed very much for busy, modern living. French doors to the garden give the whole room a bright and airy feeling.

The spacious dual-aspect lounge, meanwhile, provides the perfect place to relax. Upstairs are two double bedrooms, the large main bedroom with en suite, a single bedroom and a family bathroom.



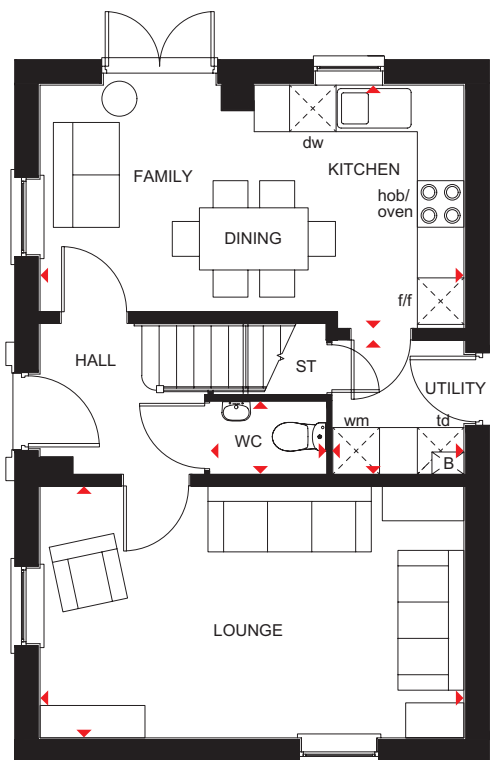
DAVID WILSON HOMES
WHERE QUALITY LIVES

THE HADLEY

THREE BEDROOM DETACHED HOME

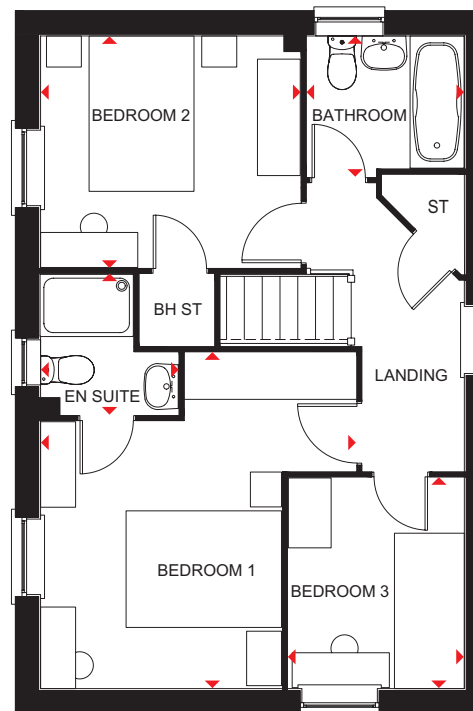
Key

B	Boiler	f/f	Fridge/freezer space	td	Tumble dryer space
ST	Store	wm	Washing machine space	◀▶	Dimension location
BH ST	Bulkhead Store	dw	Dishwasher space		



Ground Floor

Lounge	5455 x 3242 mm	17'11" x 10'8"
Kitchen/Family/ Dining	5455 x 3131 mm	17'11" x 10'3"
Utility	1727 x 1688 mm	5'8" x 5'6"
WC	1484 x 932 mm	4'10" x 3'1"



First Floor

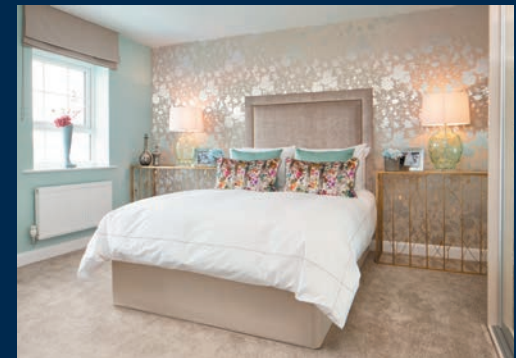
Bedroom 1	4324 x 4058 mm	14'2" x 13'3"
En Suite	1806 x 1771 mm	5'11" x 5'9"
Bedroom 2	3341 x 2978 mm	11'3" x 9'9"
Bedroom 3	2713 x 2265 mm	8'11" x 7'5"
Bathroom	2025 x 1811 mm	6'8" x 6'0"

All images used are for illustrative purposes. These and the dimensions given are illustrative for this house type and individual properties may differ. Please check with your Sales Adviser in respect of individual properties. We give maximum dimensions within each room which includes areas of fixtures and fittings including fitted furniture. These dimensions should not be used for carpet or flooring sizes, appliance spaces or items of furniture. All images, photographs and dimensions are not intended to be relied upon for, nor to form part of, any contract unless specifically incorporated in writing into the contract. BDW001914/OCT22



THE ABBEYDALE

THREE BEDROOM DETACHED HOME



Individual plots may vary, please speak to the Sales Adviser

The Abbeydale's traditional look conceals the modern, flexible home inside. A good-sized lounge, where all the family can relax, leads to a bright, open-plan kitchen and dining area, with access to the rear garden via French

doors. A separate utility adds practicality and an integral garage provides extra security. Upstairs are three double bedrooms – the spacious main bedroom with en suite and dressing area – and a family bathroom with shower.



DAVID WILSON HOMES

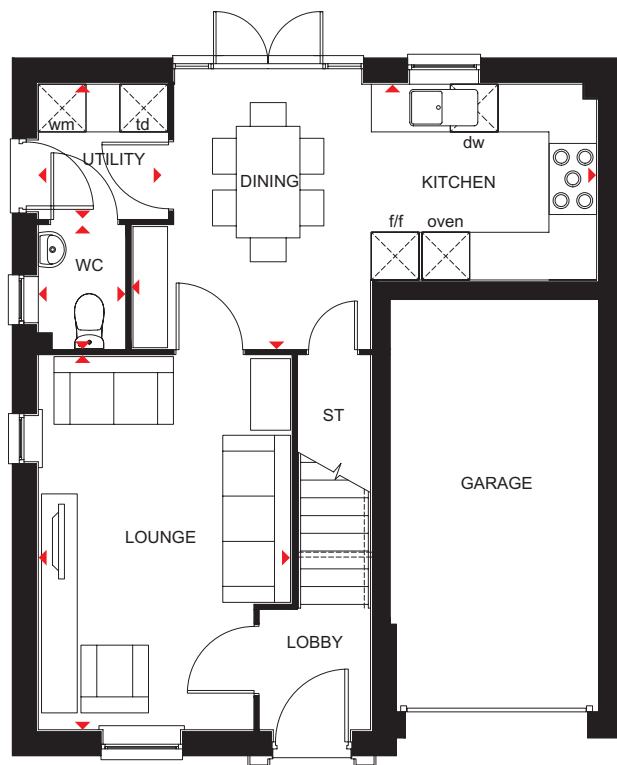
WHERE QUALITY LIVES

THE ABBEYDALE

THREE BEDROOM DETACHED HOME

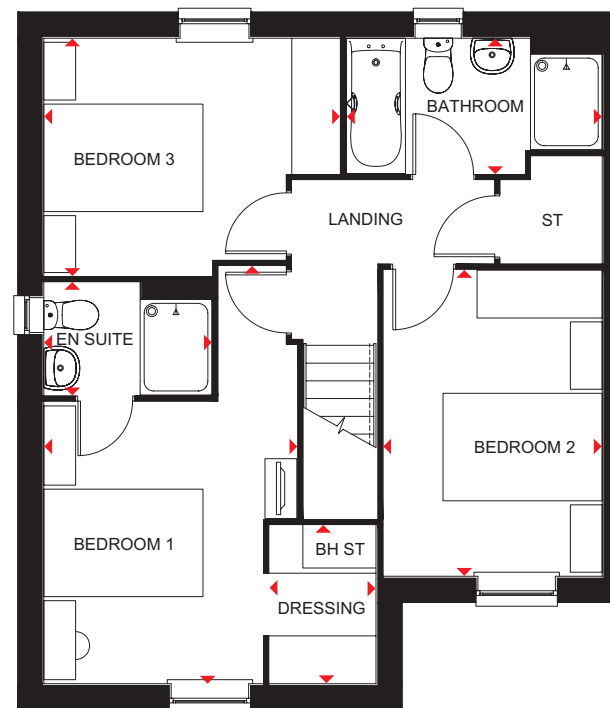
Key

ST	Store	dw	Dishwasher space
f/f	Fridge/freezer space	td	Tumble dryer space
wm	Washing machine space	◄►	Dimension location



Ground Floor

Lounge	4699 x 3179 mm	15'5" x 10'5"
Kitchen/Dining	5839 x 3322 mm	19'2" x 10'11"
WC	1687 x 1547 mm	5'6" x 5'1"
Utility	1461 x 1113 mm	4'9" x 3'8"



First Floor

Bedroom 1	5242 x 3179 mm	17'2" x 10'5"
En suite	2110 x 1412 mm	6'11" x 4'8"
Dressing	1987 x 1336 mm	6'6" x 4'5"
Bedroom 2	3845 x 2741 mm	12'7" x 9'0"
Bedroom 3	3714 x 2982 mm	12'2" x 9'9"
Bathroom	3212 x 1700 mm	10'6" x 5'7"

All images used are for illustrative purposes. These and the dimensions given are illustrative for this house type and individual properties may differ. Please check with your Sales Adviser in respect of individual properties. We give maximum dimensions within each room which includes areas of fixtures and fittings including fitted furniture. These dimensions should not be used for carpet or flooring sizes, appliance spaces or items of furniture. All images, photographs and dimensions are not intended to be relied upon for, nor to form part of, any contract unless specifically incorporated in writing into the contract. BDW001914/OCT22



THE AVONDALE

FOUR BEDROOM DETACHED HOME



Individual plots may vary, please speak to the Sales Adviser



This tasteful, double-fronted, detached home, with elegant sash-style windows, provides plenty of flexible living space. The Avondale's generous open-plan kitchen has a dedicated dining area with an attractive bay window, and a separate utility room.

A large, triple-aspect lounge leads to the garden via French doors and a separate study provides quiet space to work. Upstairs are four double bedrooms, the main bedroom with en suite, and a family bathroom with bath and shower.



DAVID WILSON HOMES

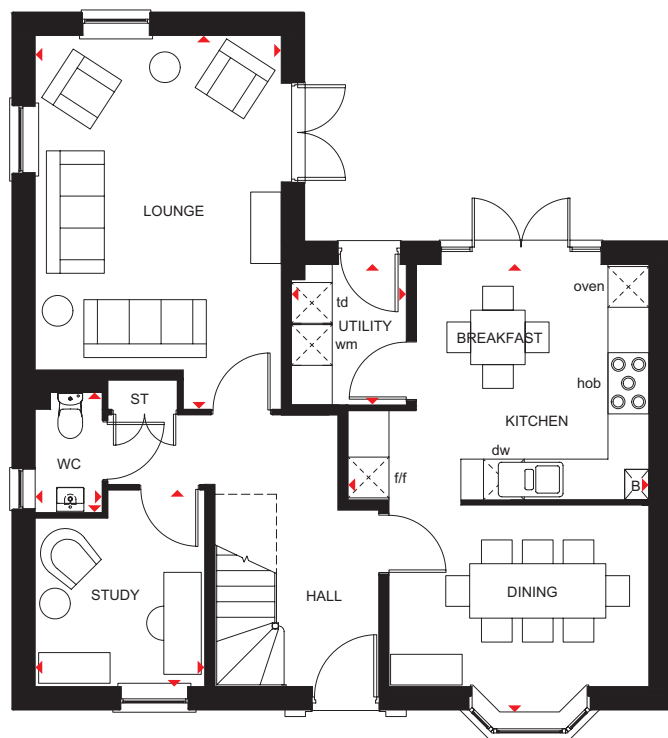
WHERE QUALITY LIVES

THE AVONDALE

FOUR BEDROOM HOME

Key

ST	Store	f/f	Fridge/freezer space	dw	Dishwasher space	↔	Dimension location
CYL	Cylinder	wm	Washing machine space	td	Tumble dryer space		



Ground Floor

Lounge	5490 x 3615 mm	18'0" x 11'10"
Kitchen/ Breakfast/Dining	6600 x 4418 mm	21'7" x 14'6"
Utility	2062 x 1688 mm	6'9" x 5'6"
Study	2885 x 2490 mm	9'5" x 8'2"
WC	1768 x 983 mm	5'10" x 3'3"



First Floor

Bedroom 1	5587 x 3615 mm	18'4" x 11'10"
En suite	2222 x 1435 mm	7'3" x 4'8"
Bedroom 2	5227 x 2800 mm	17'1" x 9'2"
Bedroom 3	3566 x 3316 mm	11'8" x 10'10"
Bedroom 4	3893 x 2550 mm	12'9" x 8'4"
Bathroom	2871 x 1929 mm	9'5" x 6'4"

All images used are for illustrative purposes. These and the dimensions given are illustrative for this house type and individual properties may differ. Please check with your Sales Adviser in respect of individual properties. We give maximum dimensions within each room which includes areas of fixtures and fittings including fitted furniture. These dimensions should not be used for carpet or flooring sizes, appliance spaces or items of furniture. All images, photographs and dimensions are not intended to be relied upon for, nor to form part of, any contract unless specifically incorporated in writing into the contract.

BDW001914/OCT22



THE MILLFORD

FOUR BEDROOM HOME



Individual plots may vary, please speak to the Sales Adviser



The bay-fronted lounge and the kitchen/dining area's attractive walk-in glazed bay that leads to the garden make The Millford a bright place to call home. A family area in the kitchen increases flexibility for living and entertaining, while a separate utility room adds practicality. The ground

floor has an integral garage for added security. Upstairs are four double bedrooms, the spacious main bedroom with en suite. The fully fitted family bathroom also includes a shower.



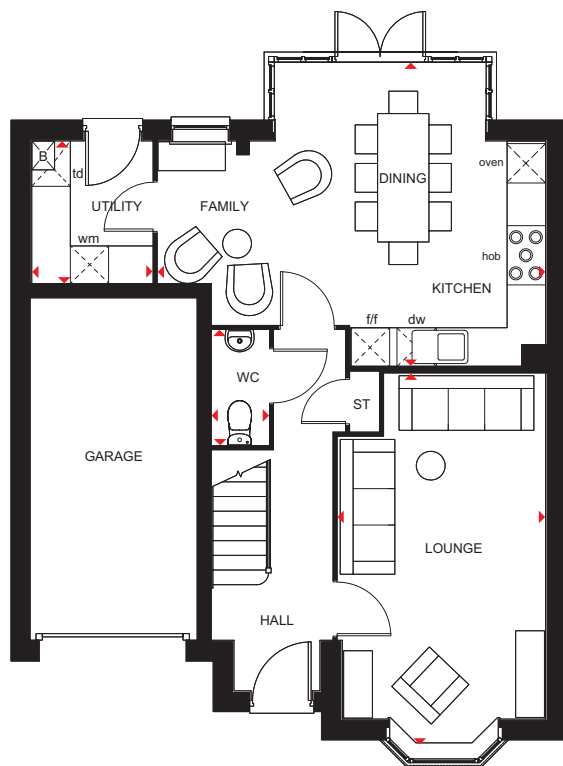
DAVID WILSON HOMES
WHERE QUALITY LIVES

THE MILLFORD

FOUR BEDROOM HOME

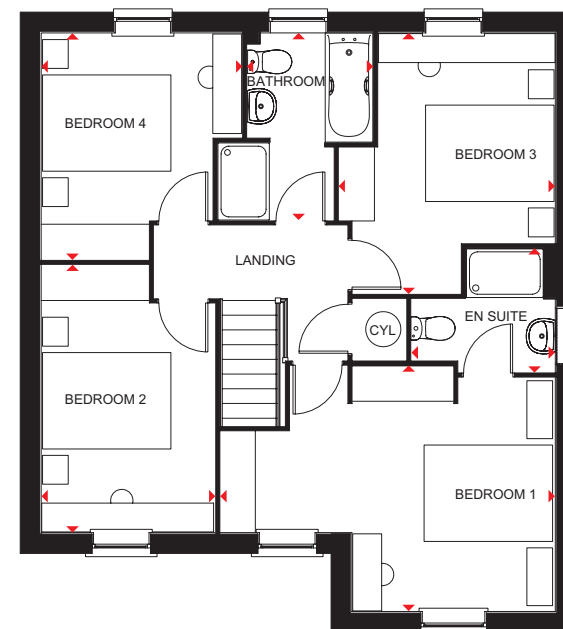
Key

B	Boiler	f/f	Fridge/freezer space	td	Tumble dryer space
ST	Store	wm	Washing machine space	◀▶	Dimension location
CYL	Cylinder	dw	Dishwasher space		



Ground Floor

Lounge	5772 x 3235 mm	18'11" x 10'7"
Kitchen/Dining/Family	6037 x 4735 mm	19'10" x 15'6"
Utility	2225 x 1877 mm	7'3" x 6'2"
WC	1786 x 895 mm	5'10" x 2'11"



First Floor

Bedroom 1	5195 x 3823 mm	17'0" x 12'6"
En suite	2235 x 1924 mm	7'4" x 6'4"
Bedroom 2	4161 x 2707 mm	13'8" x 8'10"
Bedroom 3	4056 x 3365 mm	13'4" x 11'0"
Bedroom 4	3527 x 3124 mm	11'7" x 10'3"
Bathroom	2913 x 1950 mm	9'7" x 6'5"

All images used are for illustrative purposes. These and the dimensions given are illustrative for this house type and individual properties may differ. Please check with your Sales Adviser in respect of individual properties. We give maximum dimensions within each room which includes areas of fixtures and fittings including fitted furniture. These dimensions should not be used for carpet or flooring sizes, appliance spaces or items of furniture. All images, photographs and dimensions are not intended to be relied upon for, nor to form part of, any contract unless specifically incorporated in writing into the contract. BDW001914/OCT22



THE HERTFORD

FOUR BEDROOM DETACHED HOME



Individual plots may vary, please speak to the Sales Adviser



Designed over three floors, The Hertford is a spacious family home. A large open-plan dining area and kitchen – with separate utility – and a beautiful glazed walk-in bay with French doors leading to the garden, provide an abundance of flexible living space. Attractive bay windows in the dining area and the dual-aspect

lounge ensure this home offers a bright welcome. Two double bedrooms, the spacious main bedroom with en suite and dressing area, and the family bathroom are on the first floor. Upstairs are a further double bedroom, a single bedroom and a shower room.



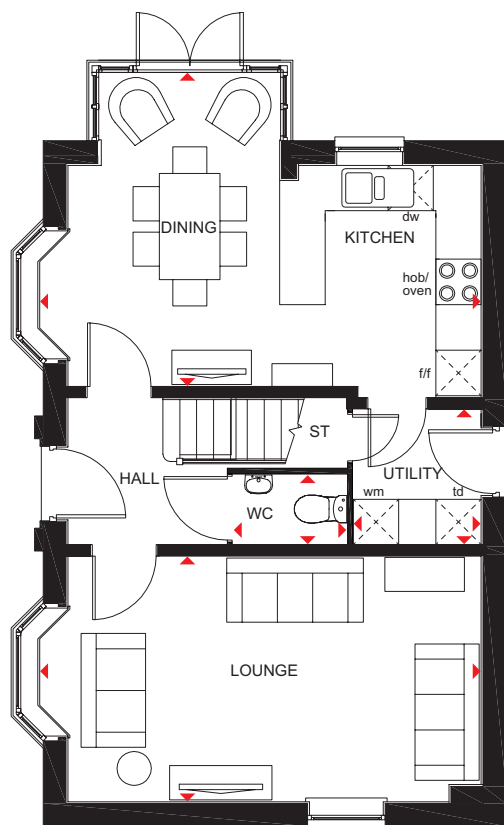
DAVID WILSON HOMES
WHERE QUALITY LIVES

THE HERTFORD

FOUR BEDROOM DETACHED HOME

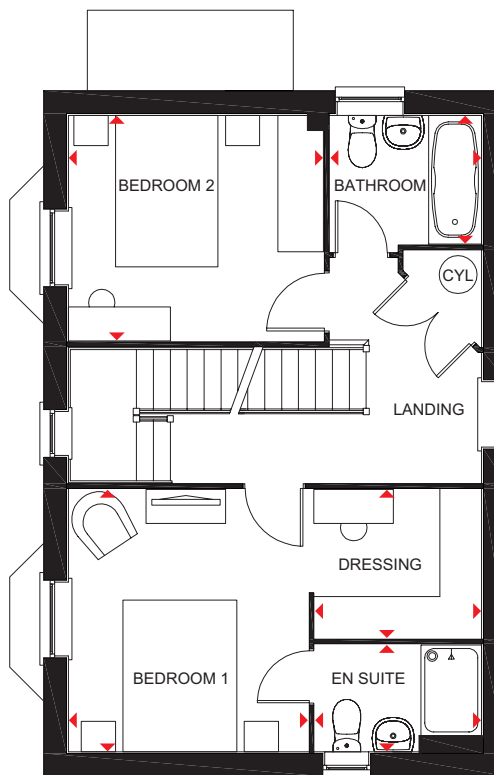
Key

ST	Store	wm	Washing machine space	◀▶	Dimension location
CYL	Cylinder	dw	Dishwasher space		
f/f	Fridge/freezer space	td	Tumble dryer space		



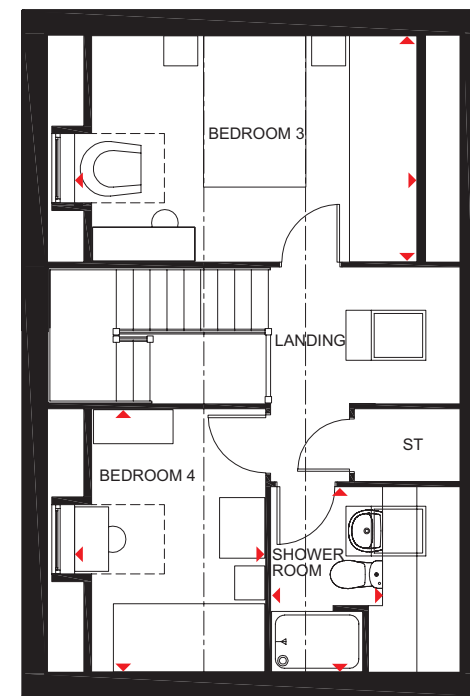
Ground Floor

Lounge	5852 x 3242 mm	19'2" x 10'7"
Kitchen/Dining	5852 x 4142 mm	19'2" x 13'7"
Utility	1688 x 1791 mm	5'6" x 5'10"
WC	1500 x 920 mm	4'11" x 3'0"



First Floor

Bedroom 1	3462 x 3166 mm	11'4" x 10'4"
En Suite	2200 x 1410 mm	7'2" x 4'7"
Dressing	2200 x 1963 mm	7'2" x 6'5"
Bedroom 2	3366 x 2978 mm	11'0" x 9'9"
Bathroom	2000 x 1700 mm	6'6" x 5'6"



Second Floor

Bedroom 3	4540* x 2978 mm	14'10"* x 9'9"
Bedroom 4	3462 x 2537* mm	11'4" x 8'3"*
Shower room	2432 x 1464* mm	7'11" x 4'9"*

*Overall floor dimension includes lowered ceiling areas

All images used are for illustrative purposes. These and the dimensions given are illustrative for this house type and individual properties may differ. Please check with your Sales Adviser in respect of individual properties. We give maximum dimensions within each room which includes areas of fixtures and fittings including fitted furniture. These dimensions should not be used for carpet or flooring sizes, appliance spaces or items of furniture. All images, photographs and dimensions are not intended to be relied upon for, nor to form part of, any contract unless specifically incorporated in writing into the contract. BDW001914/OCT22



THE BRADGATE

FOUR BEDROOM DETACHED HOME



Individual plots may vary, please speak to the Sales Adviser



A home to suit all the family, The Bradgate offers a combination of flexible communal areas and dedicated quiet space. An expansive open-plan kitchen with separate utility has dining and family areas leading to the garden – and extended living space in good weather – via a beautiful walk-in glazed bay with French

doors. A separate study and a lounge with attractive bay window provide room to work and relax in. Upstairs, four double bedrooms, the spacious main bedroom with en suite, ensure everyone has space of their own. A family bathroom completes this truly superb family home.



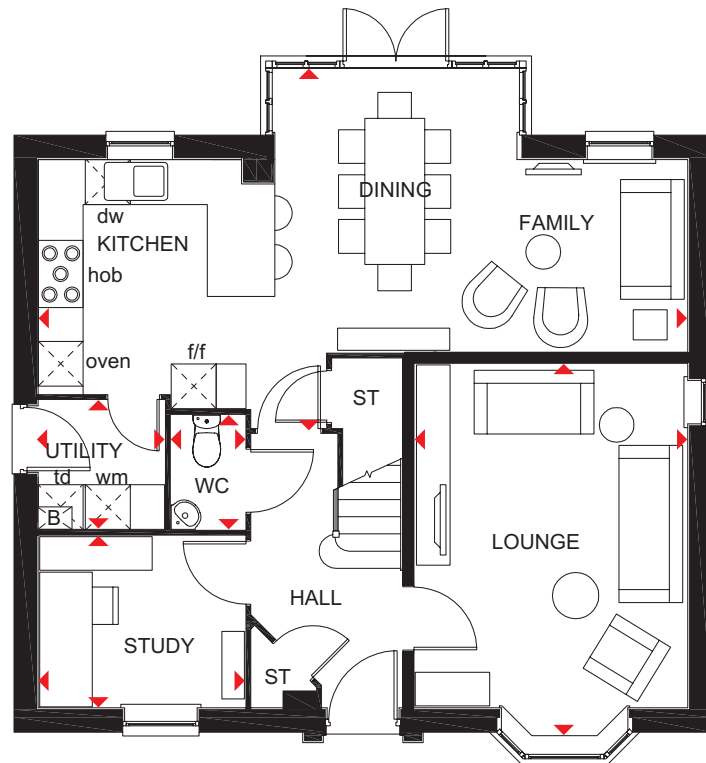
DAVID WILSON HOMES
WHERE QUALITY LIVES

THE BRADGATE

FOUR BEDROOM DETACHED HOME

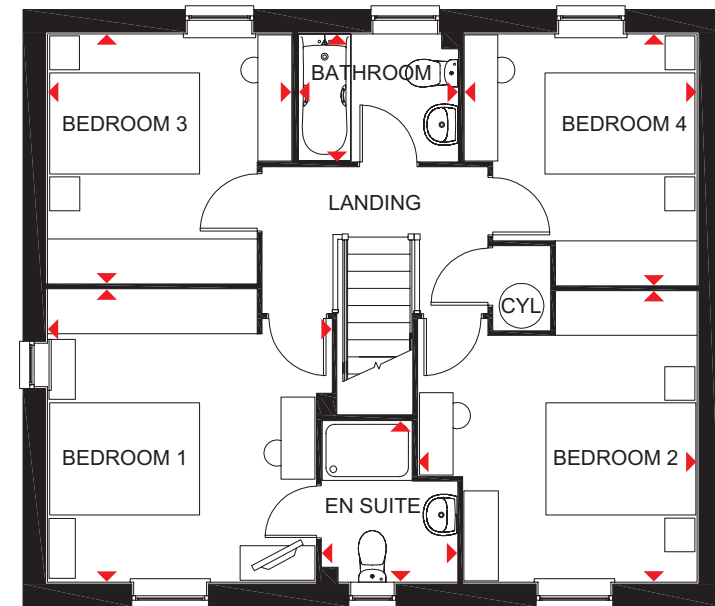
Key

B	Boiler	f/f	Fridge/freezer space	td	Tumble dryer space
ST	Store	wm	Washing machine space	◀▶	Dimension location
CYL	Cylinder	dw	Dishwasher space		



Ground Floor

Lounge	4999 x 3658 mm	16'4" x 12'0"
Kitchen/Dining/Family	8677 x 4807 mm	28'5" x 15'9"
Study	2762 x 2295 mm	9'0" x 7'6"
Utility	1687 x 1724 mm	5'6" x 5'7"
WC	1524 x 986 mm	5'0" x 3'2"



First Floor

Bedroom 1	3910 x 3791 mm	12'9" x 12'5"
En suite	2162 x 1799 mm	7'1" x 5'10"
Bedroom 2	3720 x 3885 mm	12'2" x 12'9"
Bedroom 3	3329 x 3263 mm	10'11" x 10'8"
Bedroom 4	3353 x 3112 mm	11'0" x 10'2"
Bathroom	2124 x 1700 mm	6'11" x 5'7"

All images used are for illustrative purposes. These and the dimensions given are illustrative for this house type and individual properties may differ. Please check with your Sales Adviser in respect of individual properties. We give maximum dimensions within each room which includes areas of fixtures and fittings including fitted furniture. These dimensions should not be used for carpet or flooring sizes, appliance spaces or items of furniture. All images, photographs and dimensions are not intended to be relied upon for, nor to form part of, any contract unless specifically incorporated in writing into the contract. BDW001914/OCT22



THE HOLDEN

FOUR BEDROOM DETACHED HOME



Individual plots may vary, please speak to the Sales Adviser



Sash-style windows give The Holden a charming, traditional look, yet inside it is designed very much for modern family living. A beautiful glazed bay leading to the garden makes the open-plan kitchen, family and dining areas exceptionally bright and

airy. A separate utility room also has access to the garden, while a large bay-fronted lounge and a separate study provide room to relax and work. Upstairs are four double bedrooms, the main bedroom with en suite, and a family bathroom with shower.



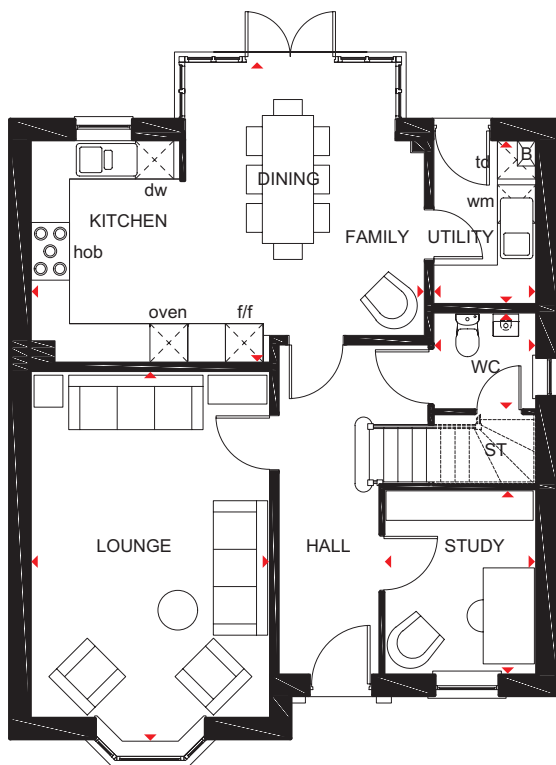
DAVID WILSON HOMES
WHERE QUALITY LIVES

THE HOLDEN

FOUR BEDROOM DETACHED HOME

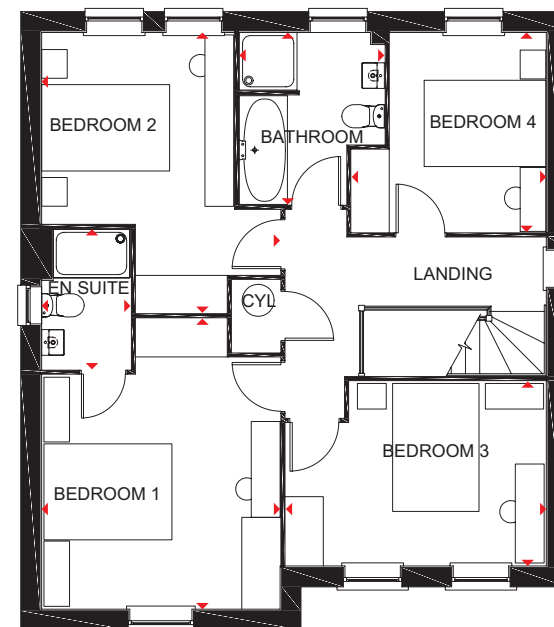
Key

B	Boiler	f/f	Fridge/freezer space	td	Tumble dryer space
ST	Store	wm	Washing machine space	◀▶	Dimension location
CYL	Cylinder	dw	Dishwasher space		



Ground Floor

Lounge	5802 x 3728 mm	19'0" x 12'3"
Kitchen/Family/Dining	6147 x 4685 mm	20'2" x 15'4"
Study	2886 x 2361 mm	9'6" x 7'9"
Utility	2545 x 1593 mm	8'4" x 5'3"
WC	1498 x 1593 mm	4'11" x 5'3"



First Floor

Bedroom 1	4543 x 3728 mm	14'11" x 12'3"
En suite	2190 x 1390 mm	7'2" x 4'7"
Bedroom 2	4384 x 3728 mm	14'4" x 12'3"
Bedroom 3	4073 x 2886 mm	13'4" x 9'5"
Bedroom 4	3120 x 3043 mm	10'3" x 10'0"
Bathroom	2689 x 2266 mm	8'10" x 7'5"

All images used are for illustrative purposes. These and the dimensions given are illustrative for this house type and individual properties may differ. Please check with your Sales Adviser in respect of individual properties. We give maximum dimensions within each room which includes areas of fixtures and fittings including fitted furniture. These dimensions should not be used for carpet or flooring sizes, appliance spaces or items of furniture. All images, photographs and dimensions are not intended to be relied upon for, nor to form part of, any contract unless specifically incorporated in writing into the contract. BDW001914/OCT22



THE WINSTONE

FOUR BEDROOM DETACHED HOME



Individual plots may vary, please speak to the Sales Adviser



The Winstone is a truly magnificent detached family home. The elegant central hall leads to the stylish open-plan kitchen with bright breakfast and family areas, and a glazed bay leading to the garden. French doors also open onto the garden from the spacious lounge. The separate dining room, study and utility room

complete the ground floor. Upstairs are four double bedrooms, the beautiful main bedroom with dressing area and full en suite. The second bedroom also has an en suite, and the large bathroom with shower provides for the rest of the family.



DAVID WILSON HOMES

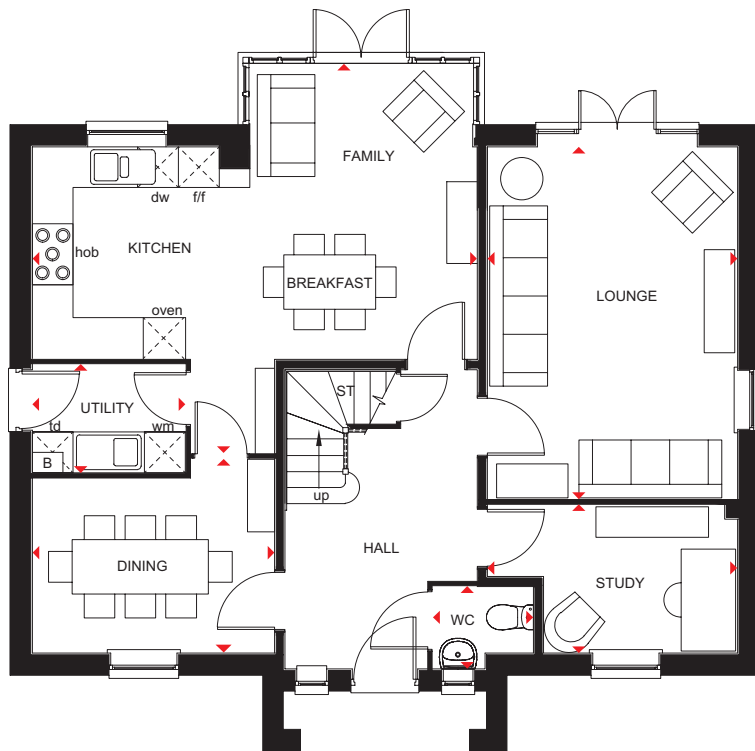
WHERE QUALITY LIVES

THE WINESTONE

FOUR BEDROOM DETACHED HOME

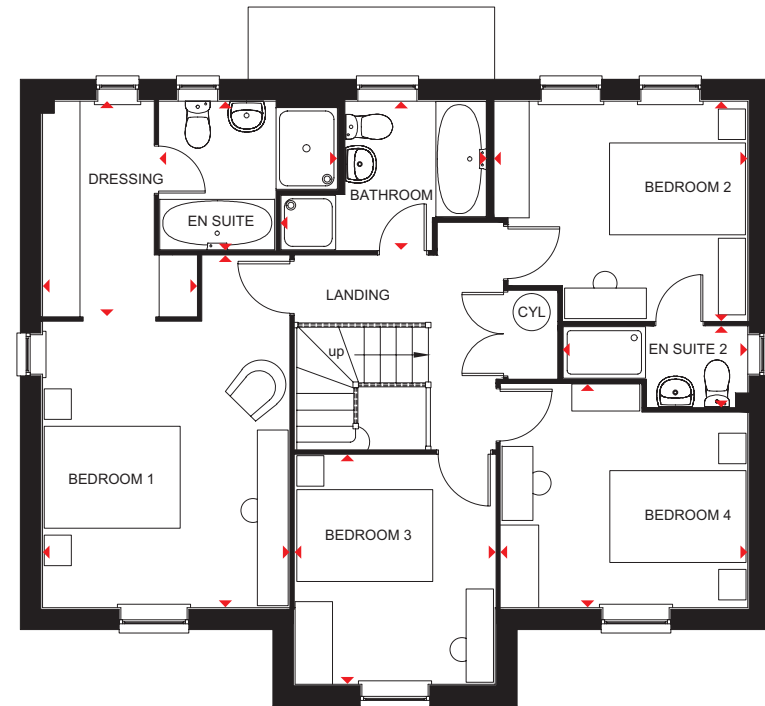
Key

B	Boiler	f/f	Fridge/freezer space	td	Tumble dryer space
ST	Store	wm	Washing machine space	◀▶	Dimension location
CYL	Cylinder	dw	Dishwasher space		



Ground Floor

Lounge	5171 x 3675 mm	16'11" x 12'0"
Kitchen/Family/Breakfast	6540 x 5725 mm	21'5" x 18'9"
Dining	3563 x 2851 mm	11'8" x 9'4"
Study	3675 x 2180 mm	12'0" x 7'2"
Utility	2250 x 1591 mm	7'4" x 5'3"
WC	1475 x 1210 mm	4'10" x 4'0"



First Floor

Bedroom 1	5169 x 3624 mm	16'11" x 11'10"
Dressing	3155 x 2265 mm	10'4" x 7'5"
En suite 1	2615 x 2182 mm	8'7" x 7'2"
Bedroom 2	3722 x 3223 mm	12'2" x 10'7"
En suite 2	2710 x 1178 mm	8'11" x 3'10"
Bedroom 3	3368 x 2940 mm	11'1" x 9'8"
Bedroom 4	3623 x 3280 mm	11'10" x 10'9"
Bathroom	3014 x 2182 mm	9'10" x 7'2"

All images used are for illustrative purposes. These and the dimensions given are illustrative for this house type and individual properties may differ. Please check with your Sales Adviser in respect of individual properties. We give maximum dimensions within each room which includes areas of fixtures and fittings including fitted furniture. These dimensions should not be used for carpet or flooring sizes, appliance spaces or items of furniture. All images, photographs and dimensions are not intended to be relied upon for, nor to form part of, any contract unless specifically incorporated in writing into the contract. BDW001914/OCT22



YOUR BEAUTIFUL

NEW HOME COMES WITH PEACE OF MIND

David Wilson Homes has been crafting beautiful new homes since 1958. Our decades of experience and unrelenting commitment to excellence means that over 90% of our homeowners would recommend us to a friend, which is why we've been awarded 5 Stars by the Home Builders Federation every year since every year since 2010.[^] What's more, our homes come with an NHBC Buildmark Warranty which gives you a 10 year structural warranty and a 2 year fixtures and fittings warranty** as standard. You're always safe in the knowledge that you can buy one of our new homes with confidence.

WHAT DOES YOUR WARRANTY COVER?

- Central heating system
- Hot and cold plumbing system
- Appliances
- Kitchen units
- Electrical system
- Sanitary ware taps and shower doors
- Windows
- External and interiors doors
- Ironmongery
- Renewable energy installation (if fitted)
- Internal/external drainage system
- Boundary brick walls
- Driveway
- 24-hour emergency cover for 2 years
- An NHBC 10 year Buildmark Warranty means we have complied with the NHBC Standards which set out the technical requirements for design, materials and workmanship in new home construction. This is just one of the added benefits of buying a new home.

WARRANTY EXCLUSIONS

While your warranty includes most elements, certain aspects cannot be covered including:

- Garden landscaping
- Fences
- Wear and tear
- Your own alterations
- Registered Social Landlord Homes
- Carpets and floor coverings
- Failure to maintain
- Wilful damage



[^]We are the only major national housebuilder to be awarded this award 10 years running. "we" refers to the Barratt Developments PLC group brands. **First 2 years covered by Builder Warranty & NHBC Guarantee or similar. Years 3-10 covered by NHBC insurance or similar. Full exclusions and limitations can be found on the NHBC website. Available on virtually all of our developments. Images may include optional upgrades at additional cost. All information in this document is correct to the best of our knowledge at the time of going to print.

NEW HOMES

Quality Code



Housebuilders and developers who build new homes will be expected to register with the [New Homes Quality Board](#) (NHQB). As long as a housebuilder or developer has followed the correct registration process, including completing the necessary training, introducing a complaints procedure, and following other processes and procedures that are needed to meet the requirements of this New Homes Quality Code (the code), they will become a registered developer.

Registered developers agree to follow the code and the New Homes Ombudsman Service, including accepting the decisions of the New Homes Ombudsman in relation to dealings with customers. If a registered developer does not meet the required standards, or fails to accept and act in line with the decisions of the New Homes Ombudsman, they may have action taken against them, including being removed from the register of registered developers.

The code sets out the requirements that registered developers must meet. The code may be updated from time to time to reflect changes to industry best practice as well as the decisions of the New Homes Ombudsman Service.

All homes built by registered developers must meet building-safety and other regulations. All registered developers should aim to make sure there are no snags or defects in their properties before the keys are handed over to a customer. If there are any snags or defects, these should be put right within the agreed timescales.

What the code covers

For the purposes of this code, 'customer' means a person who is buying or intends to buy a new home which they will live in or give to another person. (If a new home is being bought in joint names, 'the customer' includes all the joint customers.) However, the New Homes Quality

Board have also started work to consider other groups of customers and what they should be able to expect from a new home. This includes shared owners and people who are buying a new home to let to other people. Any changes the New Homes Quality Board make to the code to reflect the needs of other groups of customers will be developed through consultation, and they will continually assess and review the effectiveness of the code, and any new laws or regulations that apply. Other areas which are not covered by the code are claims for loss of property value or blight (where a property falls in value or becomes difficult to sell because of major public work in the area), personal injury or claims that are not covered by the scheme rules of the New Homes Ombudsman Service.



Nothing in this code affects any other rights the customer has by law and does not replace any legislation that applies to the new home. Customers do not have to make a complaint to the New Homes Ombudsman Service if they are not satisfied with a matter that is covered by the code. They may decide to take other action, such as through the civil courts or other ombudsman or regulator. We are on the New Homes Quality Code register of registered developers. "We" refers to the Barratt Developments PLC group brands including Barratt London, Barratt Homes and David Wilson Homes. All images used are for illustrative purposes. These and the dimensions given are illustrative for this house type and individual properties may differ. Please check with your Sales Adviser in respect of individual properties. We give maximum dimensions within each room which includes areas of fixtures and fittings including fitted furniture. These dimensions should not be used for carpet or flooring sizes, appliance spaces or items of furniture. All images, photographs and dimensions are not intended to be relied upon for, nor to form part of, any contract unless specifically incorporated in writing into the contract.

DAVID WILSON HOMES

WHERE QUALITY LIVES

dwh.co.uk or call **0333 355 8467**

Calls to 03 numbers are charged at the same rate as dialling an 01 or 02 number. If your fixed line or mobile service has inclusive minutes to 01/02 numbers, then calls to 03 are counted as part of this inclusive call volume.
Non-BT customers and mobile phone users should contact their service providers for information about the cost of calls.