

Lightfoot

MEADOWS



A DEVELOPMENT OF 2, 3, & 4 BEDROOM HOMES

dwh.co.uk 0333 355 84 80



DAVID WILSON HOMES
WHERE QUALITY LIVES

Lightfoot Lane, Preston, Lancashire PR4 0AH

KEY

-  **The Hadley**
3 bedroom home
-  **The Archford**
3 bedroom home
-  **The Irving**
4 bedroom home
-  **The Mitchell**
4 bedroom home
-  **The Millford**
4 bedroom home
-  **The Herford**
4 bedroom home
-  **The Bradgate**
4 bedroom home
-  **The Avondale**
4 bedroom home
-  **The Winstone**
4 bedroom home
-  **The Ingleby**
4 bedroom home
-  **The Bayswater**
4 bedroom home
-  **The Maddoc**
5 bedroom home

Low Cost Homes

-  **The Lewes**
1 bedroom home
-  **The Lewington**
2 bedroom home
-  **The Winton**
2 bedroom home
-  **The Stevenson**
2 bedroom home
-  **The Wilford**
2 bedroom home
-  **The Archford**
3 bedroom home

★ Marketing Suite & Show Homes



THE ARCHFORD

THREE BEDROOM TERRACED HOME



Individual plots may vary, please speak to the Sales Adviser



A bright family home, The Archford has a stylish open-plan kitchen and dining area, with French doors opening out onto the rear garden – creating the option for even more living space in good weather. A lobby separates the

kitchen and the spacious lounge, with stairs leading to the first floor. Here, the master bedroom has its own en suite. This attractive mid-terraced home is completed by a further double bedroom, a single bedroom and a family bathroom.



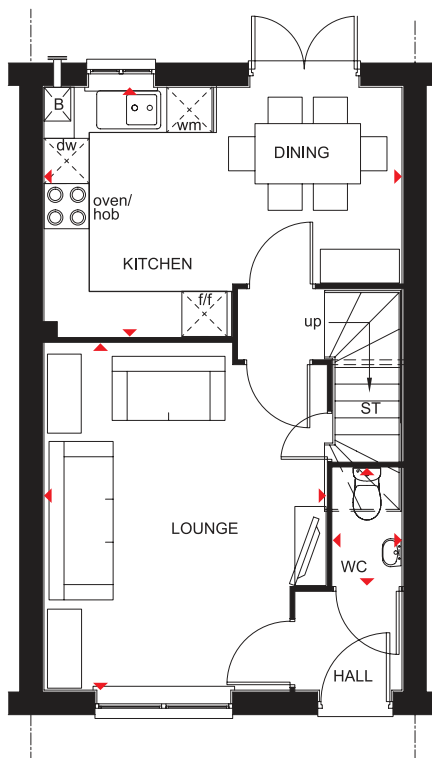
DAVID WILSON HOMES
WHERE QUALITY LIVES

THE ARCHFORD

THREE BEDROOM TERRACED HOME

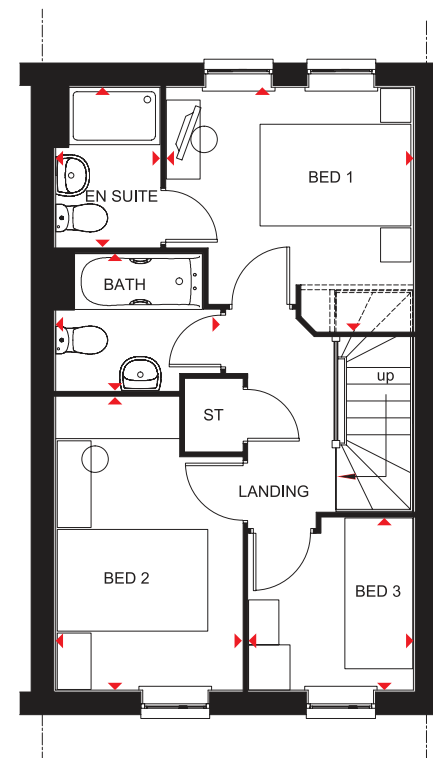
Key

B	Boiler	wm	Washing machine space
ST	Store	dw	Dishwasher space
f/f	Fridge/freezer space	◀▶	Dimension location



Ground Floor

Lounge	4604 x 3746 mm	15'1" x 12'3"
Kitchen/Dining	4750 x 3310 mm	15'7" x 10'10"
WC	1561 x 915 mm	5'1" x 3'0"



First Floor

Bed 1	3235 x 3276 mm	10'7" x 10'9"
En suite	1385 x 2119 mm	4'7" x 6'11"
Bed 2	2475 x 3891 mm	8'1" x 12'9"
Bed 3	2286 x 2186 mm	7'6" x 7'2"
Bath	1815 x 2181 mm	5'11" x 7'2"

We are on the New Homes Quality Code register of registered developers. "We" refers to the Barratt Developments PLC group brands including Barratt London, Barratt Homes and David Wilson Homes. All images used are for illustrative purposes. These and the dimensions given are illustrative for this house type and individual properties may differ. Please check with your Sales Adviser in respect of individual properties. We give maximum dimensions within each room which includes areas of fixtures and fittings including fitted furniture. These dimensions should not be used for carpet or flooring sizes, appliance spaces or items of furniture. All images, photographs and dimensions are not intended to be relied upon for, nor to form part of, any contract unless specifically incorporated in writing into the contract.

DWH 2017 P382-I-7DS00 / SP342658

dwh.co.uk



DAVID WILSON HOMES
WHERE QUALITY LIVES

THE HADLEY

THREE BEDROOM DETACHED HOME



Individual plots may vary, please speak to the Sales Adviser



The sash-style windows give this detached home a delightfully traditional look. Yet inside, the open-plan kitchen – with its dining and family areas and separate utility room – is designed very much for busy, modern living. French doors to the garden

give the whole room a bright and airy feeling. The spacious dual-aspect lounge meanwhile provides the perfect place to relax. Upstairs are two double bedrooms, the large master with en suite, a single bedroom and a family bathroom.



DAVID WILSON HOMES

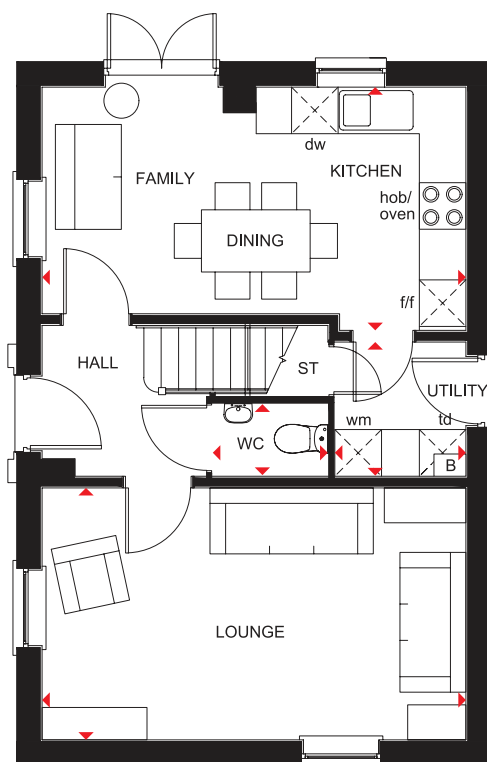
WHERE QUALITY LIVES

THE HADLEY

THREE BEDROOM DETACHED HOME

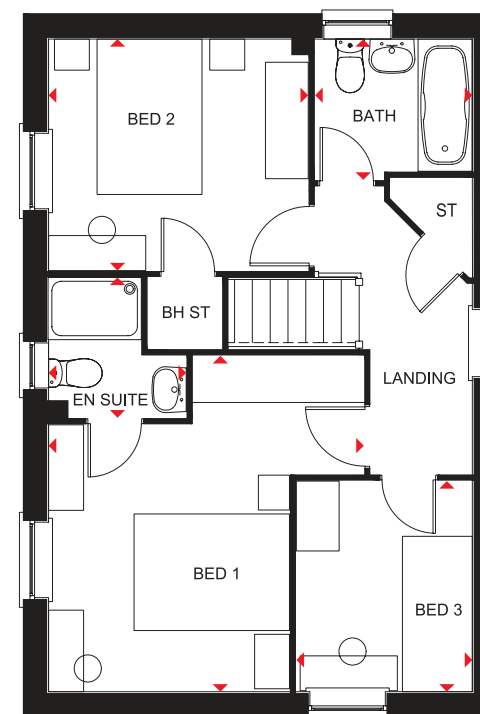
Key

B	Boiler	f/f	Fridge/freezer space	td	Tumble dryer space
ST	Store	wm	Washing machine space	◀▶	Dimension location
BH ST	Bulkhead Store	dw	Dishwasher space		



Ground Floor

Lounge	5455 x 3242 mm	17'11" x 10'8"
Kitchen/Family/ Dining	5455 x 3131 mm	17'11" x 10'3"
Utility	1727 x 1688 mm	5'8" x 5'6"
WC	1484 x 932 mm	4'10" x 3'1"



First Floor

Bedroom 1	4324 x 4058 mm	14'2" x 13'3"
En Suite	1806 x 1771 mm	5'11" x 5'9"
Bedroom 2	3341 x 2978 mm	11'3" x 9'9"
Bedroom 3	2713 x 2265 mm	8'11" x 7'5"
Bathroom	2025 x 1811 mm	6'8" x 6'0"

We are on the New Homes Quality Code register of registered developers. "We" refers to the Barratt Developments PLC group brands including Barratt London, Barratt Homes and David Wilson Homes. All images used are for illustrative purposes. These and the dimensions given are illustrative for this house type and individual properties may differ. Please check with your Sales Adviser in respect of individual properties. We give maximum dimensions within each room which includes areas of fixtures and fittings including fitted furniture. These dimensions should not be used for carpet or flooring sizes, appliance spaces or items of furniture. All images, photographs and dimensions are not intended to be relied upon for, nor to form part of, any contract unless specifically incorporated in writing into the contract.

P341--D7 DS02/SP394974

dwh.co.uk



DAVID WILSON HOMES
WHERE QUALITY LIVES

THE HERTFORD

FOUR BEDROOM DETACHED HOME



Individual plots may vary, please speak to the Sales Adviser

Designed over three floors, The Hertford is a spacious family home. A large open-plan dining area and kitchen – with separate utility – and a beautiful glazed walk-in bay with French doors leading to the garden, provide an abundance of flexible living space. Attractive bay windows in the dining area and the dual-

aspect lounge ensure this home offers a bright welcome. Two double bedrooms, the spacious master with en suite and dressing area, and the family bathroom are on the first floor. Upstairs are a further double bedroom, a single bedroom and a shower room.



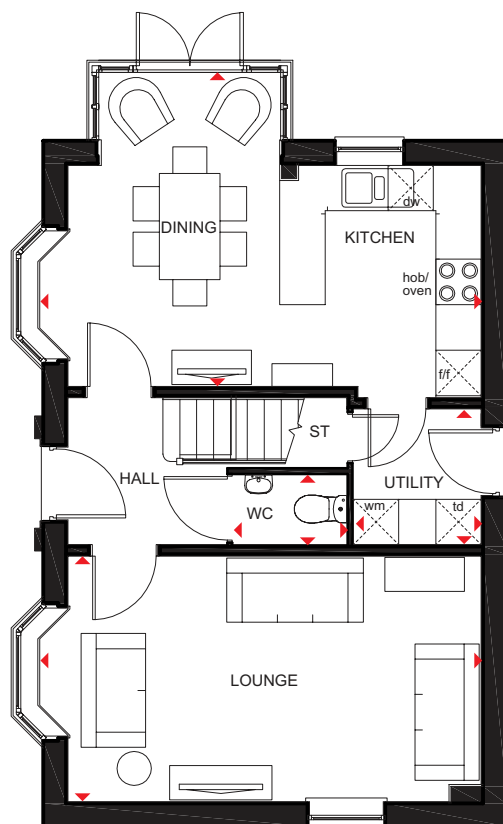
DAVID WILSON HOMES
WHERE QUALITY LIVES

THE HERTFORD

FOUR BEDROOM DETACHED HOME

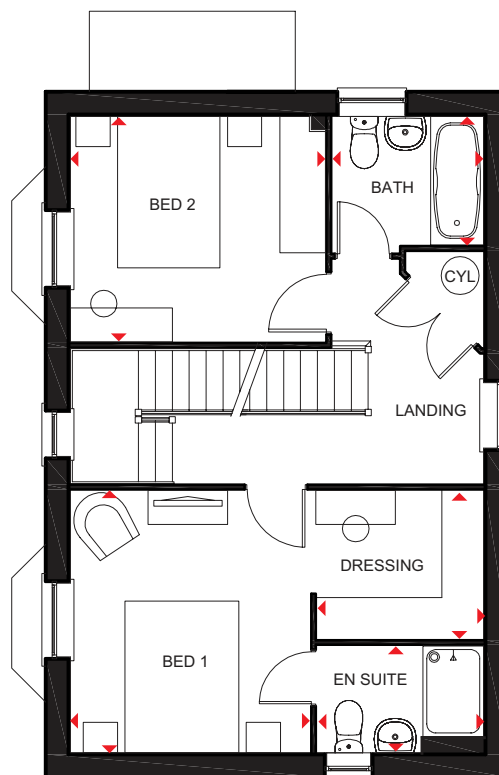
Key

ST	Store	wm	Washing machine space	◀▶	Dimension location
CYL	Cylinder	dw	Dishwasher space		
f/f	Fridge/freezer space	td	Tumble dryer space		



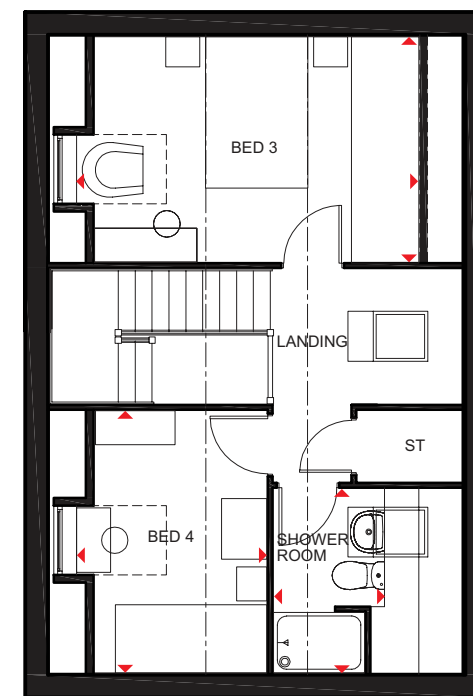
Ground Floor

Lounge	5852 x 3242 mm	19'2" x 10'7"
Kitchen/Dining	5852 x 4142 mm	19'2" x 13'7"
Utility	1688 x 1791 mm	5'6" x 5'10"
WC	1500 x 920 mm	4'11" x 3'0"



First Floor

Bed 1	3462 x 3166 mm	11'4" x 10'4"
En suite	2200 x 1410 mm	7'2" x 4'7"
Dressing	2200 x 1963 mm	7'2" x 6'5"
Bed 2	3366 x 2978 mm	11'0" x 9'9"
Bath	2000 x 1700 mm	6'6" x 5'6"



Second Floor

Bed 3	4540* x 2978 mm	14'10"* x 9'9"
Bed 4	3462 x 2537* mm	11'4" x 8'3"*
Shower room	2432 x 1464* mm	7'11" x 4'9"*

*Overall floor dimension includes lowered ceiling areas

We are on the New Homes Quality Code register of registered developers. "We" refers to the Barratt Developments PLC group brands including Barratt London, Barratt Homes and David Wilson Homes. All images used are for illustrative purposes. These and the dimensions given are illustrative for this house type and individual properties may differ. Please check with your Sales Adviser in respect of individual properties. We give maximum dimensions within each room which includes areas of fixtures and fittings including fitted furniture. These dimensions should not be used for carpet or flooring sizes, appliance spaces or items of furniture. All images, photographs and dimensions are not intended to be relied upon for, nor to form part of, any contract unless specifically incorporated in writing into the contract.

H470---7DS00 / SP 341684

dwh.co.uk



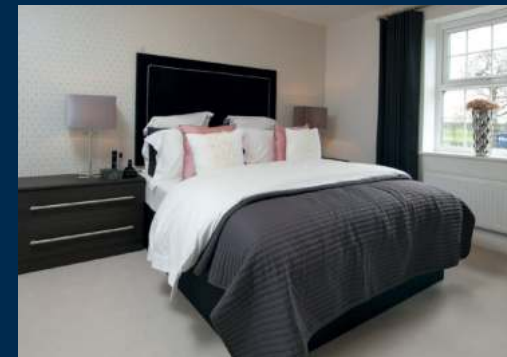
DAVID WILSON HOMES
WHERE QUALITY LIVES

THE INGLEBY

FOUR BEDROOM DETACHED HOME



Individual plots may vary, please speak to the Sales Adviser



The sash-style windows of this family home give it a delightfully traditional feel, while inside, the large open-plan kitchen with its dining and family areas is designed very much for modern living. Essential utility space is discreetly tucked away in a corner of the

kitchen and French doors give access to the rear garden. The separate lounge provides a comfortable haven where everyone can relax. Upstairs are two double bedrooms, the master with en suite, two single bedrooms and a family bathroom.



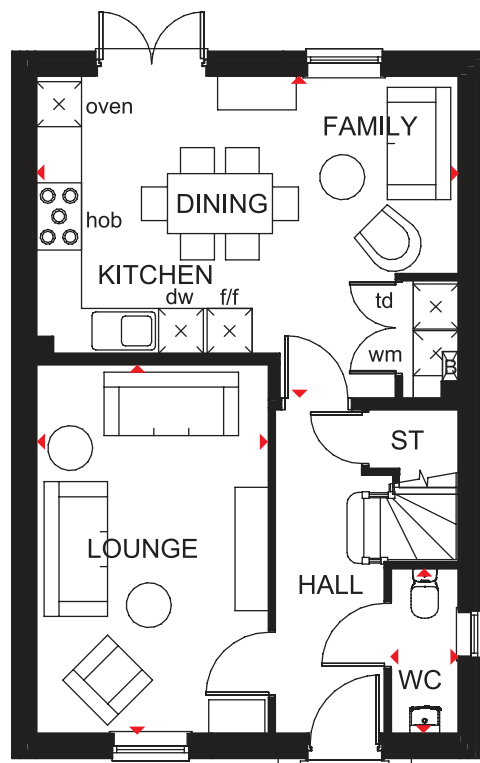
DAVID WILSON HOMES
WHERE QUALITY LIVES

THE INGLEBY

FOUR BEDROOM DETACHED HOME

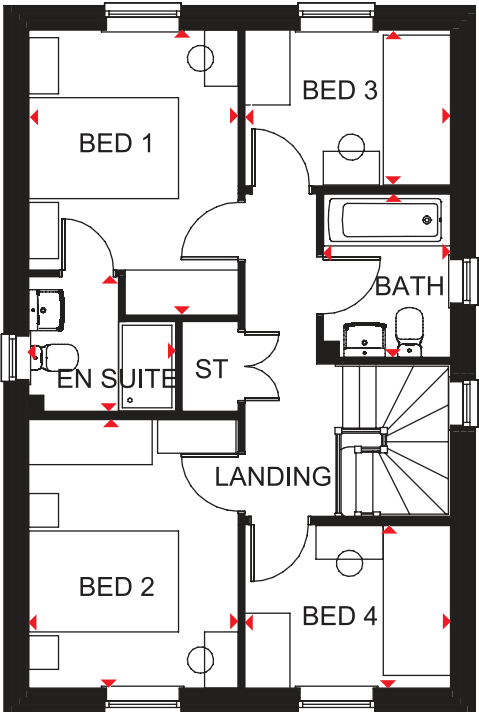
Key

B	Boiler	wm	Washing machine space	◀▶	Dimension location
ST	Store	dw	Dishwasher space		
f/f	Fridge/freezer space	td	Tumble dryer space		



Ground Floor

Lounge	4930 x 3100 mm	16'2" x 10'2"
Kitchen/Family/Dining	5635 x 4305 mm	18'6" x 14'1"
WC	2206 x 900 mm	7'3" x 2'11"



First Floor

Bedroom 1	3802 x 2800 mm	12'6" x 9'2"
En suite	1962 x 1800 mm	6'5" x 5'11"
Bedroom 2	3587 x 2800 mm	11'9" x 9'2"
Bedroom 3	2747 x 2066 mm	9'0" x 6'9"
Bedroom 4	2747 x 2172 mm	9'0" x 7'1"
Bathroom	2179 x 1700 mm	7'2" x 5'7"

*Window may be omitted on certain plots. Speak to a Sales Adviser for details on individual plots.

We are on the New Homes Quality Code register of registered developers. "We" refers to the Barratt Developments PLC group brands including Barratt London, Barratt Homes and David Wilson Homes. All images used are for illustrative purposes. These and the dimensions given are illustrative for this house type and individual properties may differ. Please check with your Sales Adviser in respect of individual properties. We give maximum dimensions within each room which includes areas of fixtures and fittings including fitted furniture. These dimensions should not be used for carpet or flooring sizes, appliance spaces or items of furniture. All images, photographs and dimensions are not intended to be relied upon for, nor to form part of, any contract unless specifically incorporated in writing into the contract. DWH 2017 H403--C7DS00/SP389013



THE MILLFORD

FOUR BEDROOM HOME



Individual plots may vary, please speak to the Sales Adviser

The bay-fronted lounge and the kitchen/dining area's attractive walk-in glazed bay that leads to the garden make The Millford a bright place to call home. A family area in the kitchen increases flexibility for living and entertaining,

while a separate utility room adds practicality. The ground floor has an integral garage for added security. Upstairs are four double bedrooms, the spacious master with en suite. The fully fitted family bathroom also includes a shower.



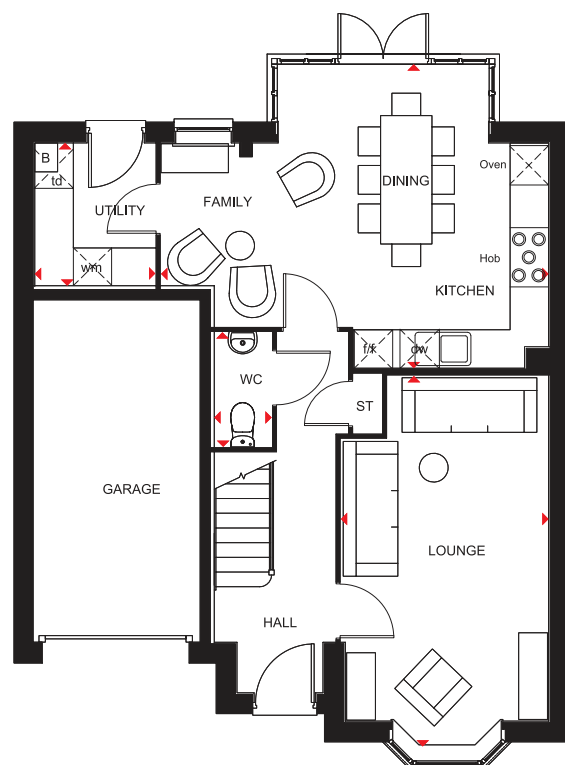
DAVID WILSON HOMES
WHERE QUALITY LIVES

THE MILLFORD

FOUR BEDROOM HOME

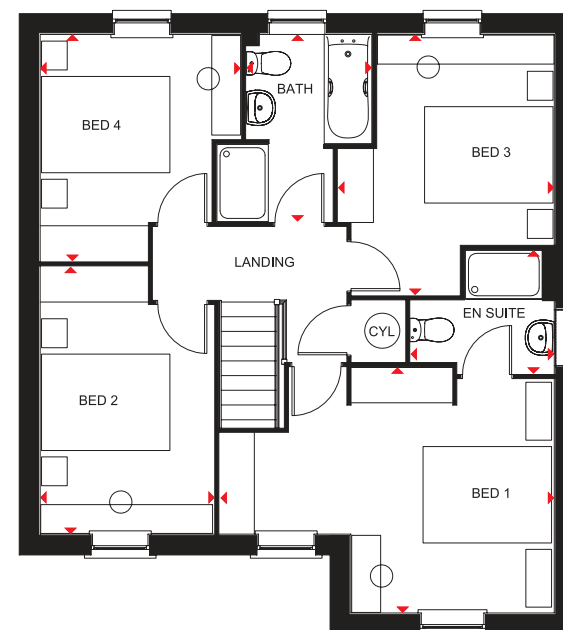
Key

B	Boiler	f/f	Fridge/freezer space	td	Tumble dryer space
ST	Store	wm	Washing machine space	◀▶	Dimension location
CYL	Cylinder	dw	Dishwasher space		



Ground Floor

Lounge	5772 x 3235 mm	18'11" x 10'7"
Kitchen/Dining/Family	6037 x 4735 mm	19'10" x 15'6"
Utility	2225 x 1877 mm	7'3" x 6'2"
WC	1786 x 895 mm	5'10" x 2'11"



First Floor

Bedroom 1	5195 x 3823 mm	17'0" x 12'6"
En suite	2235 x 1924 mm	7'4" x 6'4"
Bedroom 2	4161 x 2707 mm	13'8" x 8'10"
Bedroom 3	4056 x 3365 mm	13'4" x 11'0"
Bedroom 4	3527 x 3124 mm	11'7" x 10'3"
Bathroom	2913 x 1950 mm	9'7" x 6'5"

We are on the New Homes Quality Code register of registered developers. "We" refers to the Barratt Developments PLC group brands including Barratt London, Barratt Homes and David Wilson Homes. All images used are for illustrative purposes. These and the dimensions given are illustrative for this house type and individual properties may differ. Please check with your Sales Adviser in respect of individual properties. We give maximum dimensions within each room which includes areas of fixtures and fittings including fitted furniture. These dimensions should not be used for carpet or flooring sizes, appliance spaces or items of furniture. All images, photographs and dimensions are not intended to be relied upon for, nor to form part of, any contract unless specifically incorporated in writing into the contract.

DWH 2017 H41 I ---7DS 00/SP 387802

dwh.co.uk



DAVID WILSON HOMES
WHERE QUALITY LIVES

THE WINTON

TWO BEDROOM MID-TERRACED HOME



Individual plots may vary, please speak to the Sales Adviser



Light streams in through French doors and sash-style windows, making The Winton mid-terraced home a bright and pleasant place to live. Its traditional look conceals a practical, modern home with a stylish

fitted kitchen and the flexibility of a spacious, open-plan lounge and dining area that leads to the rear garden via the French doors. Upstairs are two good-sized double bedrooms and the bathroom.



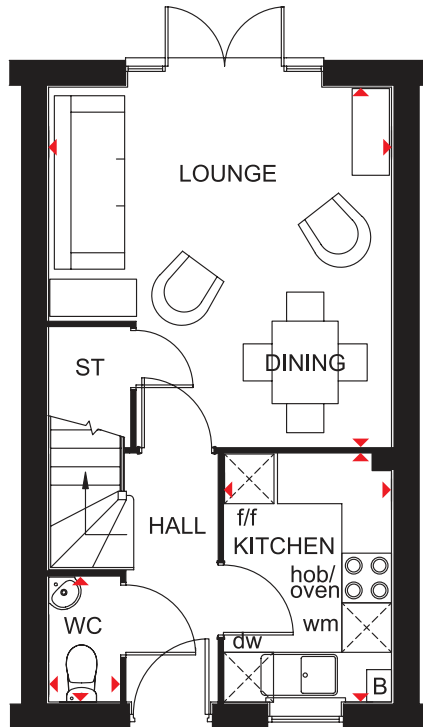
DAVID WILSON HOMES
WHERE QUALITY LIVES

THE WINTON

TWO BEDROOM MID-TERRACED HOME

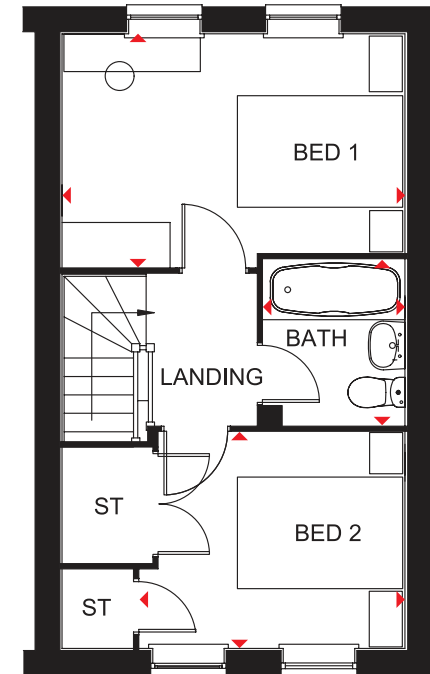
Key

B	Boiler	wm	Washing machine space
ST	Store	dw	Dishwasher space
f/f	Fridge/freezer space	◄ ►	Dimension location



Ground Floor

Lounge/Dining	4351 x 4150 mm	14'3" x 13'7"
Kitchen	3000 x 2021 mm	9'10" x 6'8"
WC	1511 x 860 mm	4'11" x 2'10"



First Floor

Bed 1	4150 x 2821 mm	13'7" x 9'3"
Bed 2	2615 x 3207 mm	8'7" x 10'6"
Bath	2000 x 1710 mm	6'7" x 5'7"

We are on the New Homes Quality Code register of registered developers. "We" refers to the Barratt Developments PLC group brands including Barratt London, Barratt Homes and David Wilson Homes. All images used are for illustrative purposes. These and the dimensions given are illustrative for this house type and individual properties may differ. Please check with your Sales Adviser in respect of individual properties. We give maximum dimensions within each room which includes areas of fixtures and fittings including fitted furniture. These dimensions should not be used for carpet or flooring sizes, appliance spaces or items of furniture. All images, photographs and dimensions are not intended to be relied upon for, nor to form part of, any contract unless specifically incorporated in writing into the contract.

P206-I-5DS25 / SP364477

dwh.co.uk



DAVID WILSON HOMES
WHERE QUALITY LIVES

WILFORD

2 BEDROOM END-TERRACED HOME



Individual plots may vary, please speak to the Sales Adviser



The end-terraced Wilford is the ideal solution for those seeking a first or smaller home. Step through the front door and the hall leads to a separate, stylishly fitted kitchen and a downstairs WC. It then opens up into a spacious lounge and

dining area with French doors leading to the rear garden – the perfect place to entertain in good weather. Upstairs are two double bedrooms, a bathroom fitted with contemporary sanitary ware and plenty of essential storage space.



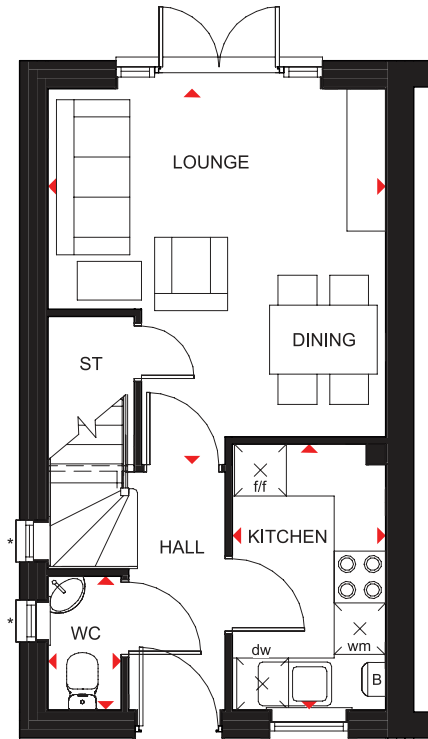
DAVID WILSON HOMES
WHERE QUALITY LIVES

WILFORD

2 BEDROOM END-TERRACED HOME

Key

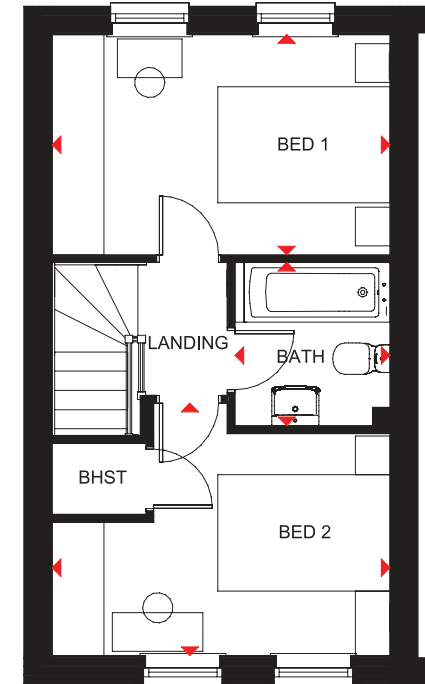
B	Boiler	f/f	Fridge/freezer space	◀▶	Dimension location
ST	Store	wm	Washing machine space		
BHST	Bulkhead store	dw	Dishwasher space		



Ground Floor

Lounge/Dining	4362 x 3923 mm	14'4" x 12'10"
Kitchen	3083 x 1780 mm	10'1" x 5'10"
WC	1550 x 850 mm	5'1" x 2'9"

* Window may be omitted on certain plots. Speak to a Sales Adviser for details on individual plots.



First Floor

Bed 1	3923 x 2556 mm	12'10" x 8'5"
Bed 2	3923 x 2931 mm	12'10" x 9'7"
Bath	1897 x 1800 mm	6'3" x 5'11"

We are on the New Homes Quality Code register of registered developers. "We" refers to the Barratt Developments PLC group brands including Barratt London, Barratt Homes and David Wilson Homes. All images used are for illustrative purposes. These and the dimensions given are illustrative for this house type and individual properties may differ. Please check with your Sales Adviser in respect of individual properties. We give maximum dimensions within each room which includes areas of fixtures and fittings including fitted furniture. These dimensions should not be used for carpet or flooring sizes, appliance spaces or items of furniture. All images, photographs and dimensions are not intended to be relied upon for, nor to form part of, any contract unless specifically incorporated in writing into the contract.

P204-EC7DS00/SP390798

dwh.co.uk



DAVID WILSON HOMES
WHERE QUALITY LIVES

THE STEVENSON

TWO BEDROOM MID-TERRACED HOME



Individual plots may vary, please speak to the Sales Adviser



An attractive first floor apartment with an integral garage below, The Stevenson provides flexible space for modern living. The spacious open-plan lounge has a dining area while the separate kitchen has room

for a breakfast table. As well as a good-sized master bedroom, there is also a second double bedroom and a bathroom. Windows are featured to the front of this apartment, while the rear has roof lights.



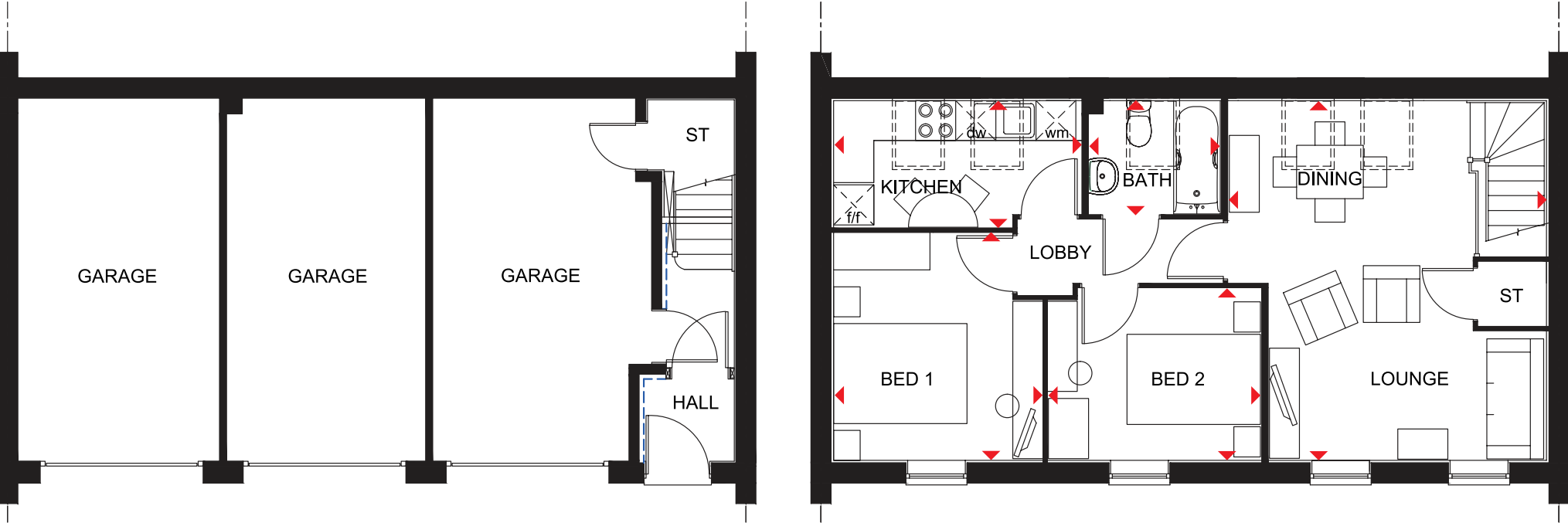
DAVID WILSON HOMES
WHERE QUALITY LIVES

THE STEVENSON

TWO BEDROOM MID-TERRACED HOME

Key
ST Store
f/f Fridge/freezer space
wm Washing machine space

dw Dishwasher space
◀▶ Dimension location



First Floor		
Lounge/Dining	5389 x 4764 mm	17'8" x 15'8"
Kitchen	3709 x 1897 mm	12'2" x 6'3"
Bedroom 1	3403 x 3123 mm	11'2" x 10'3"
Bedroom 2	2573 x 3188 mm	8'5" x 10'5"
Bathroom	1965 x 1699 mm	6'5" x 5'7"

We are on the New Homes Quality Code register of registered developers. "We" refers to the Barratt Developments PLC group brands including Barratt London, Barratt Homes and David Wilson Homes. All images used are for illustrative purposes. These and the dimensions given are illustrative for this house type and individual properties may differ. Please check with your Sales Adviser in respect of individual properties. We give maximum dimensions within each room which includes areas of fixtures and fittings including fitted furniture. These dimensions should not be used for carpet or flooring sizes, appliance spaces or items of furniture. All images, photographs and dimensions are not intended to be relied upon for, nor to form part of, any contract unless specifically incorporated in writing into the contract.

P231-V-7DS00/ SP353990

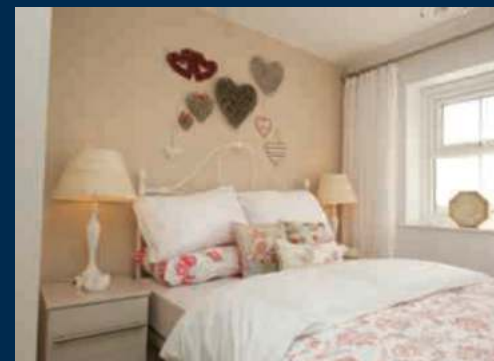


THE LEWES & THE LEWINGTON

END TERRACED HOME



Individual plots may vary, please speak to the Sales Adviser



The Lewes is a contemporary one bedroom home offering an open-plan lounge, kitchen and dining space on the first floor. The master bedroom below comes with fitted wardrobes while the shower room boasts a double shower. With an extra bedroom, The Lewington is a stylish home that makes perfect

use of the space on offer. The ground floor features an open-plan kitchen, lounge and dining room with French doors that lead to the rear garden and let plenty of natural light into the space. Upstairs boasts two comfortable double bedrooms and a family bathroom.



DAVID WILSON HOMES

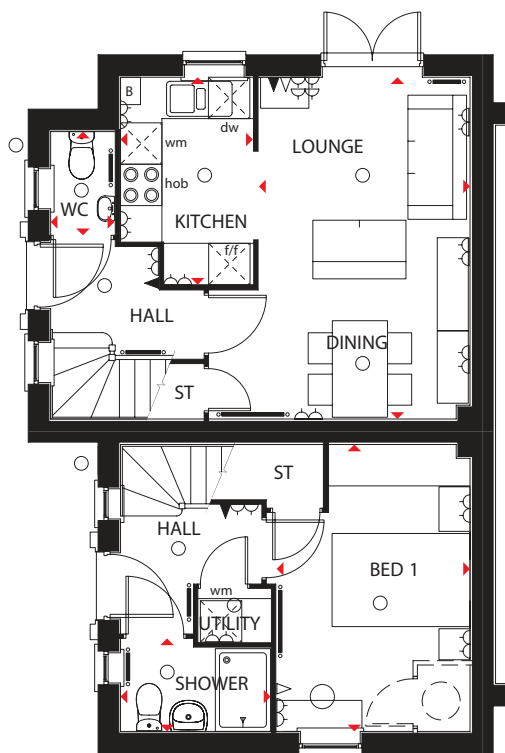
WHERE QUALITY LIVES

THE LEWES & THE LEWINGTON

END TERRACED HOME

Key

○ Light fitting	◀ Telephone outlet point	— Radiator	B Boiler	f/f Fridge/freezer space	dw Dishwasher space
⏏ Electric socket	◁ T.V. aerial socket	— Towel radiator	ST Store	wm Washing machine space	◀▶ Dimension location



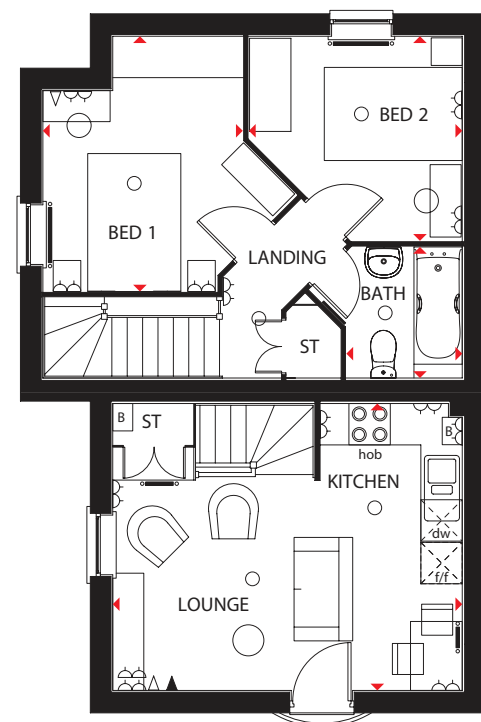
Ground Floor

The Lewington

Lounge/Dining	4955 x 3060 mm	16'3" x 10'0"
Kitchen	1918 x 3008 mm	6'4" x 9'10"
WC	1490 x 924 mm	4'11" x 3'0"

The Lewes

Bed 1	3160 x 2803 mm	13'8" x 9'2"
Utility	1041 x 762 mm	3'5" x 2'6"
Shower room	1336 x 2175 mm	4'5" x 7'2"



First Floor

The Lewington

Bed 1	3701 x 2898 mm	12'2" x 9'6"
Bed 2	2966 x 3093 mm	9'9" x 10'2"
Bath	1900 x 1680 mm	6'3" x 5'6"

The Lewes

Lounge/Kitchen	5067 x 4160 mm	16'7" x 13'8"
----------------	----------------	---------------

We are on the New Homes Quality Code register of registered developers. "We" refers to the Barratt Developments PLC group brands including Barratt London, Barratt Homes and David Wilson Homes. All images used are for illustrative purposes. These and the dimensions given are illustrative for this house type and individual properties may differ. Please check with your Sales Adviser in respect of individual properties. We give maximum dimensions within each room which includes areas of fixtures and fittings including fitted furniture. These dimensions should not be used for carpet or flooring sizes, appliance spaces or items of furniture. All images, photographs and dimensions are not intended to be relied upon for, nor to form part of, any contract unless specifically incorporated in writing into the contract.

N107-E-5, P237-E-5 DS10 / SP305706/0616

dwh.co.uk



DAVID WILSON HOMES

WHERE QUALITY LIVES

THE BAYSWATER

FOUR BEDROOM DETACHED HOME



Individual plots may vary, please speak to the Sales Adviser



The Bayswater is beautifully designed over three floors with an intelligent use of space applied. The expansive open-plan kitchen with dining and family areas has French doors leading to the rear garden. The lounge, with an attractive

bay window, is perfect for all the family to relax in. On the first floor are two double bedrooms, a twin bedroom and the family bathroom. The spacious master bedroom, with en suite and dressing area, takes up the entire second floor.



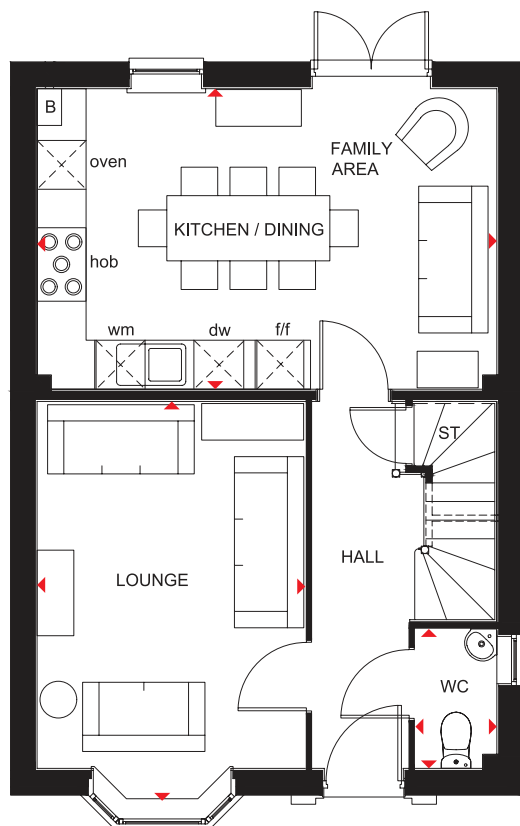
DAVID WILSON HOMES
WHERE QUALITY LIVES

THE BAYSWATER

FOUR BEDROOM DETACHED HOME

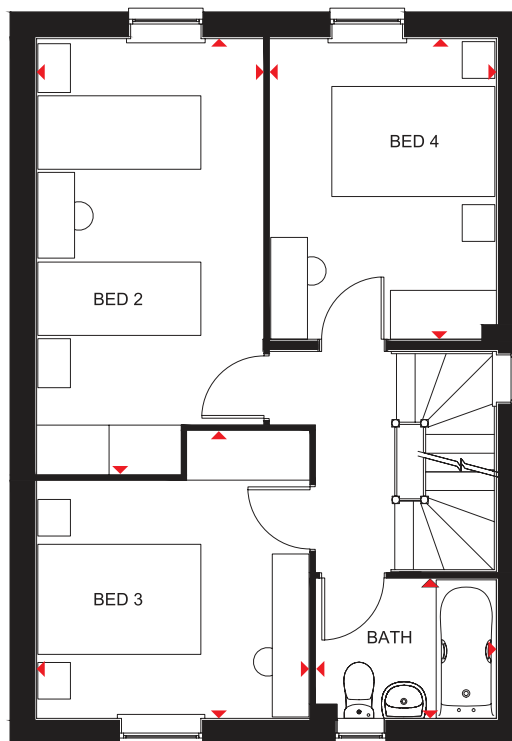
Key

B	Boiler	wm	Washing machine space	◀▶	Dimension location
ST	Store	dw	Dishwasher space		
f/f	Fridge/freezer space	RL	Roof light		



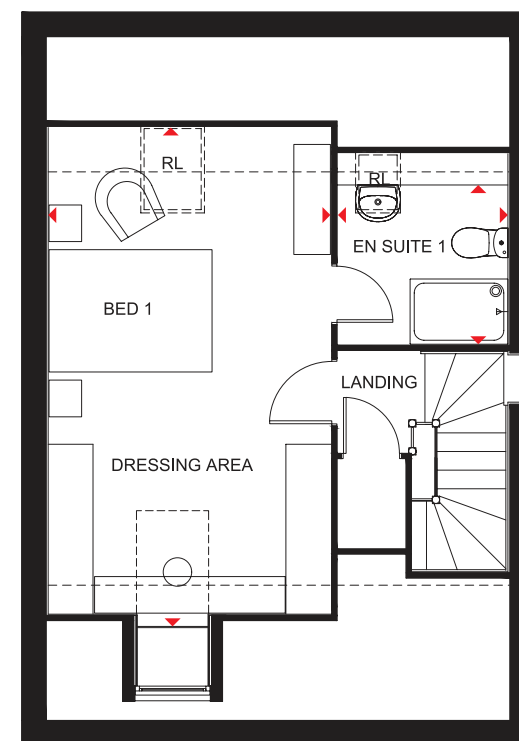
Ground Floor

Lounge	4900 x 3290 mm	16'1" x 10'10"
Kitchen/Family/Dining	5640 x 3687 mm	18'6" x 12'1"
WC	1712 x 1000 mm	5'7" x 3'3"



First Floor

Bedroom 2	2773 x 5341 mm	9'1" x 17'6"
Bedroom 3	3341 x 3525 mm	11'0" x 11'7"
Bedroom 4	2776 x 3688 mm	9'1" x 12'1"
Bathroom	2210 x 1712 mm	7'3" x 5'7"



Second Floor

Bedroom 1/Dressing Area	6120* x 3463 mm	20'1" x 11'4"
En suite	2085 x 1954* mm	6'10" x 6'5"*

*Overall floor dimension includes lowered ceiling areas

We are on the New Homes Quality Code register of registered developers. "We" refers to the Barratt Developments PLC group brands including Barratt London, Barratt Homes and David Wilson Homes. All images used are for illustrative purposes. These and the dimensions given are illustrative for this house type and individual properties may differ. Please check with your Sales Adviser in respect of individual properties. We give maximum dimensions within each room which includes areas of fixtures and fittings including fitted furniture. These dimensions should not be used for carpet or flooring sizes, appliance spaces or items of furniture. All images, photographs and dimensions are not intended to be relied upon for, nor to form part of, any contract unless specifically incorporated in writing into the contract. H406---7 DS02/SP394962

dwh.co.uk



DAVID WILSON HOMES
WHERE QUALITY LIVES

THE BRADGATE

FOUR BEDROOM DETACHED HOME



Individual plots may vary, please speak to the Sales Adviser

A home to suit all the family, the Bradgate offers a combination of flexible communal areas and dedicated quiet space. An expansive open-plan kitchen with separate utility has dining and family areas leading to the garden – and extended living space in good weather – via a beautiful walk-in glazed bay with

French doors. A separate study and a lounge with attractive bay window provide room to work and relax in. Four double bedrooms upstairs, the spacious master with en suite, ensure everyone has space of their own. A family bathroom completes this truly superb family home.



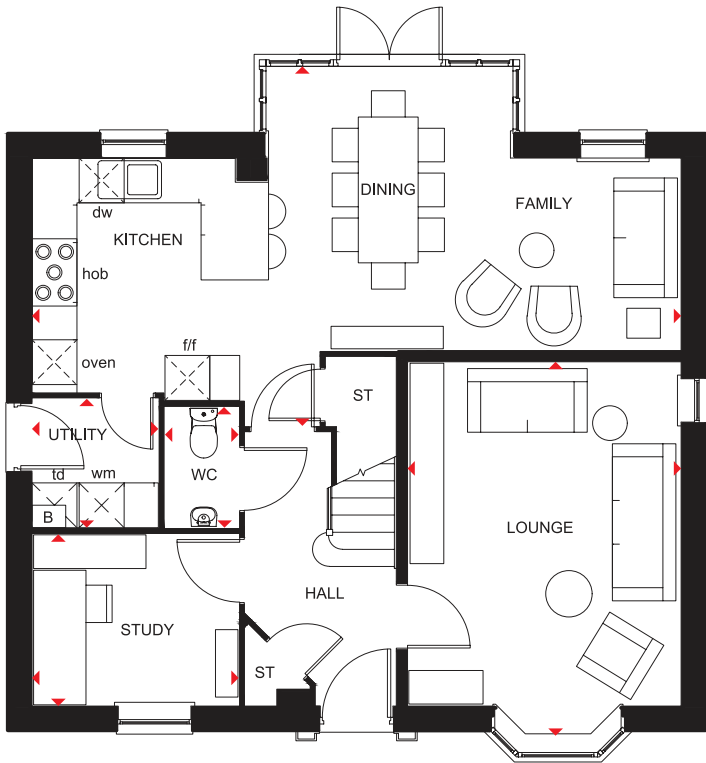
DAVID WILSON HOMES
WHERE QUALITY LIVES

THE BRADGATE

FOUR BEDROOM DETACHED HOME

Key

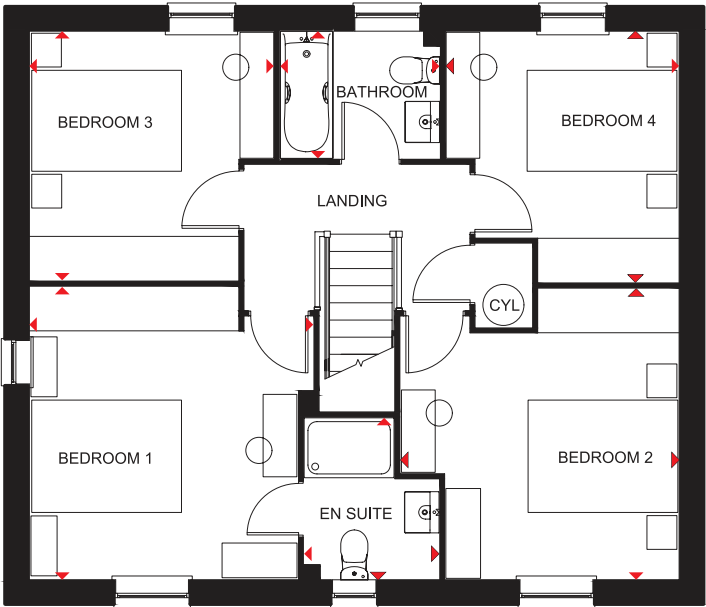
B	Boiler	f/f	Fridge/freezer space	td	Tumble dryer space
ST	Store	wm	Washing machine space	◀▶	Dimension location
CYL	Cylinder	dw	Dishwasher space		



Ground Floor

Lounge	4999 x 3658 mm	16'4" x 12'0"
Kitchen/Dining/Family	8677 x 4807 mm	28'5" x 15'9"
Study	2762 x 2295 mm	9'1" x 7'6"
Utility	1687 x 1724 mm	5'6" x 5'7"
WC	1614 x 986 mm	5'4" x 3'2"

*Window may be omitted on certain plots. Speak to a Sales Adviser for details on individual plots.



First Floor

Bedroom 1	3910 x 3791 mm	12'9" x 12'5"
En suite	2162 x 1799 mm	7'1" x 5'10"
Bedroom 2	3720 x 3885 mm	12'2" x 12'9"
Bedroom 3	3329 x 3263 mm	10'11" x 10'8"
Bedroom 4	3353 x 3112 mm	11'0" x 10'2"
Bathroom	2124 x 1700 mm	6'11" x 5'7"

*Window may be omitted on certain plots. Speak to a Sales Adviser for details on individual plots.

We are on the New Homes Quality Code register of registered developers. "We" refers to the Barratt Developments PLC group brands including Barratt London, Barratt Homes and David Wilson Homes. All images used are for illustrative purposes. These and the dimensions given are illustrative for this house type and individual properties may differ. Please check with your Sales Adviser in respect of individual properties. We give maximum dimensions within each room which includes areas of fixtures and fittings including fitted furniture. These dimensions should not be used for carpet or flooring sizes, appliance spaces or items of furniture. All images, photographs and dimensions are not intended to be relied upon for, nor to form part of, any contract unless specifically incorporated in writing into the contract.

H417-H7 DS03/SP416917



THE AVONDALE

FOUR BEDROOM DETACHED HOME



Individual plots may vary, please speak to the Sales Adviser

This tasteful, double-fronted, detached home, with elegant sash-style windows, provides plenty of flexible living space. The Avondale's generous open-plan kitchen has a dedicated dining area with an attractive bay window, and a separate

utility room. A large, triple-aspect lounge leads to the garden via French doors and a separate study provides quiet space to work. Upstairs are four double bedrooms, the master with en suite, and a family bathroom with bath and shower.



DAVID WILSON HOMES
WHERE QUALITY LIVES

THE AVONDALE

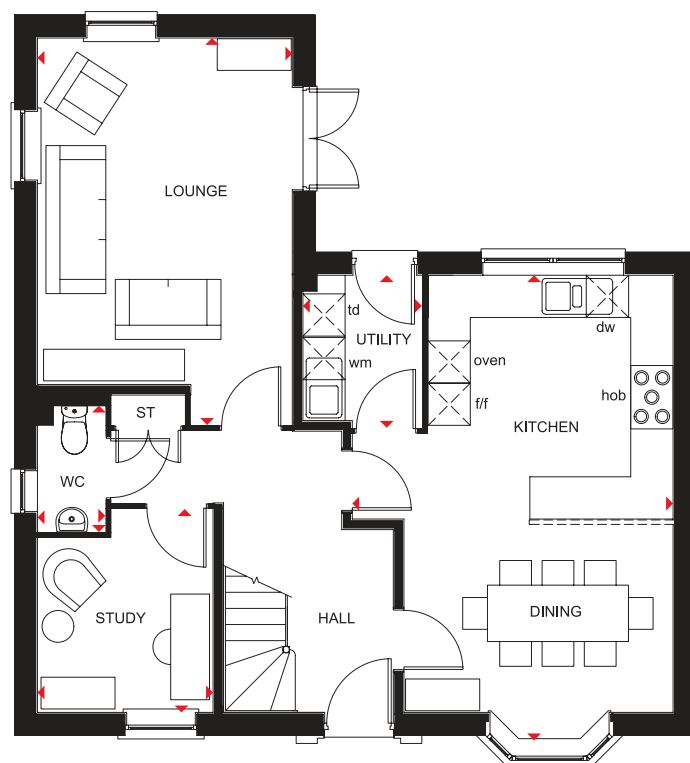
FOUR BEDROOM DETACHED HOME

Key

ST Store
CYL Cylinder
f/f Fridge/freezer space

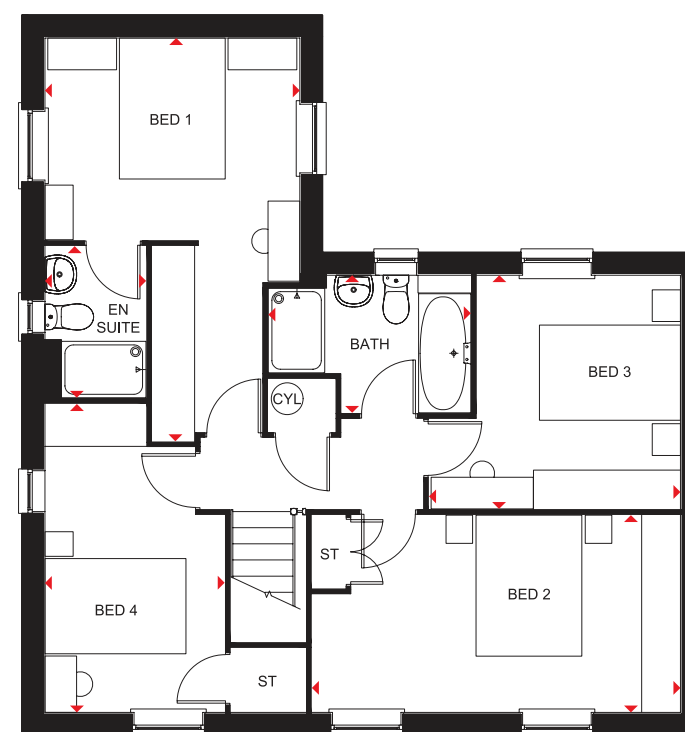
wm Washing machine space
dw Dishwasher space
td Tumble dryer space

◀▶ Dimension location



Ground Floor

Lounge	5490 x 3615 mm	18'0" x 11'10"
Kitchen/Dining	6600 x 4550 mm	21'7" x 14'11"
Utility	2164 x 1687 mm	7'7" x 5'6"
Study	2885 x 2490 mm	9'5" x 8'2"
WC	1793 x 963 mm	5'10" x 3'1"



First Floor

Bed 1	5720 x 3615 mm	18'9" x 11'10"
En suite	2151 x 1435 mm	7'0" x 4'8"
Bed 2	5227 x 2800 mm	17'1" x 9'2"
Bed 3	3566 x 3316 mm	11'8" x 10'10"
Bed 4	4376 x 2550 mm	14'4" x 8'4"
Bath	2871 x 1952 mm	9'5" x 6'4"

We are on the New Homes Quality Code register of registered developers. "We" refers to the Barratt Developments PLC group brands including Barratt London, Barratt Homes and David Wilson Homes. All images used are for illustrative purposes. These and the dimensions given are illustrative for this house type and individual properties may differ. Please check with your Sales Adviser in respect of individual properties. We give maximum dimensions within each room which includes areas of fixtures and fittings including fitted furniture. These dimensions should not be used for carpet or flooring sizes, appliance spaces or items of furniture. All images, photographs and dimensions are not intended to be relied upon for, nor to form part of, any contract unless specifically incorporated in writing into the contract.

DWH 2017 H456---7DS01 / SP355910

dwh.co.uk



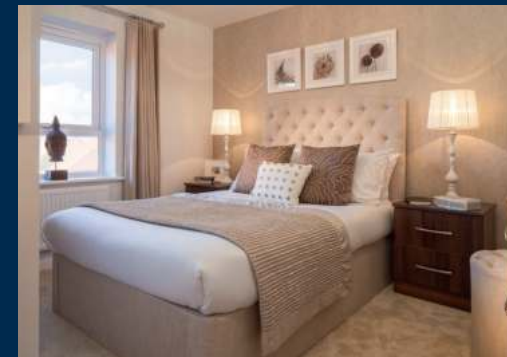
DAVID WILSON HOMES
WHERE QUALITY LIVES

THE IRVING

FOUR BEDROOM DETACHED HOME



Individual plots may vary, please speak to the Sales Adviser



Designed for flexible, modern living, The Irving is a practical family home with an attractive traditional look. The bay-fronted lounge is perfect for the family to relax in, while the open-plan kitchen, with separate utility, has dining and

family areas that access the garden, increasing flexibility for living and entertaining. Upstairs are two double bedrooms – the spacious master with en suite – two single bedrooms (the smaller making an ideal study) and a family bathroom.



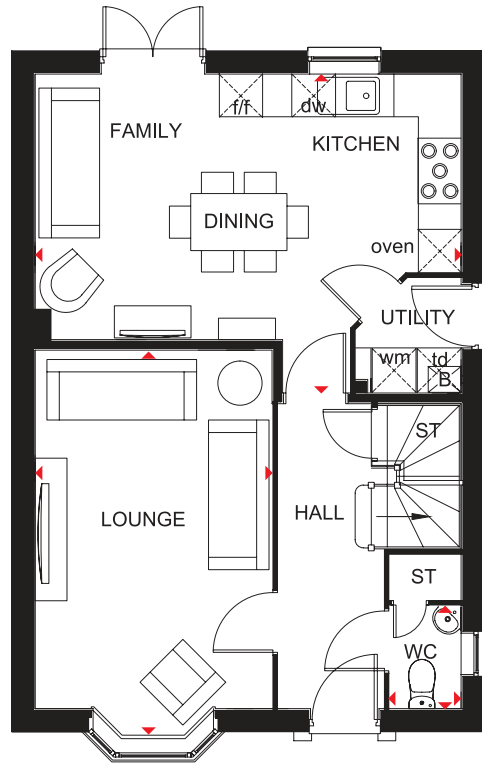
DAVID WILSON HOMES
WHERE QUALITY LIVES

THE IRVING

FOUR BEDROOM DETACHED HOME

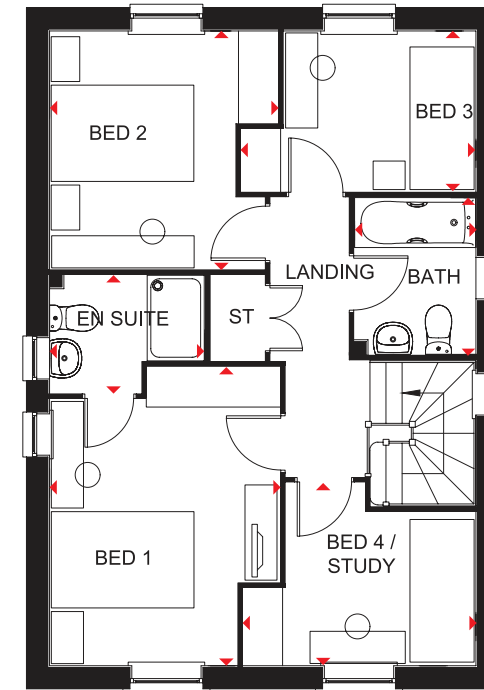
Key

B	Boiler	wm	Washing machine space	◀ ▶	Dimension location
ST	Store	dw	Dishwasher space		
f/f	Fridge/freezer space	td	Tumble dryer space		



Ground Floor

Lounge	3325 x 5425 mm	10'11" x 17'10"
Kitchen/Family/		
Dining	5978 x 4475 mm	19'7" x 14'8"
Utility	1611 x 1472 mm	5'3" x 4'10"
WC	1440 x 1000 mm	4'9" x 3'3"



First Floor

Bedroom 1	4187 x 3228 mm	13'9" x 10'7"
En suite	1650 x 2175 mm	5'5" x 7'2"
Bedroom 2	3339 x 3200 mm	10'11" x 10'6"
Bedroom 3	2250 x 3289 mm	7'5" x 10'9"
Bedroom 4/Study	2564 x 3261 mm	8'5" x 10'8"
Bathroom	2197 x 1700 mm	7'2" x 5'7"

We are on the New Homes Quality Code register of registered developers. "We" refers to the Barratt Developments PLC group brands including Barratt London, Barratt Homes and David Wilson Homes. All images used are for illustrative purposes. These and the dimensions given are illustrative for this house type and individual properties may differ. Please check with your Sales Adviser in respect of individual properties. We give maximum dimensions within each room which includes areas of fixtures and fittings including fitted furniture. These dimensions should not be used for carpet or flooring sizes, appliance spaces or items of furniture. All images, photographs and dimensions are not intended to be relied upon for, nor to form part of, any contract unless specifically incorporated in writing into the contract.

H404---5DS27 / SP361063

dwh.co.uk



DAVID WILSON HOMES
WHERE QUALITY LIVES

THE MITCHELL

FOUR BEDROOM DETACHED HOME



Individual plots may vary, please speak to the Sales Adviser



Designed for convenience and easy modern living, The Mitchell is a spacious family home. Attractive French doors access the rear garden from both the dining area of the open-plan kitchen/family room and the generous lounge, where a

large bay window also adds to the bright and airy feeling. A practical utility room leads off the kitchen. Upstairs are three double bedrooms – the master with en suite – a single bedroom and the family bathroom, complete with separate shower.



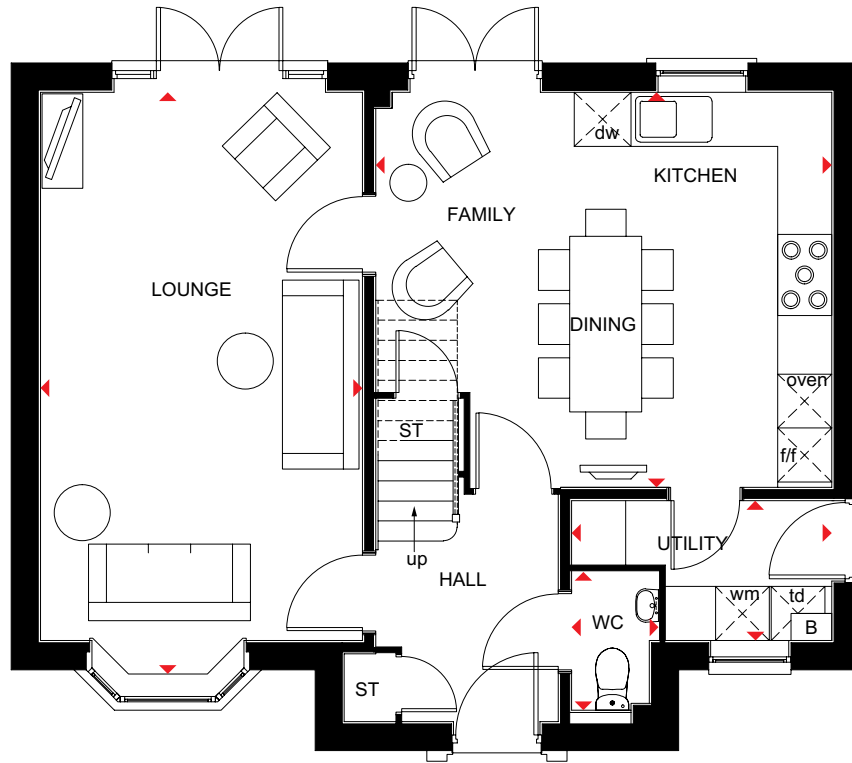
DAVID WILSON HOMES
WHERE QUALITY LIVES

THE MITCHELL

FOUR BEDROOM DETACHED HOME

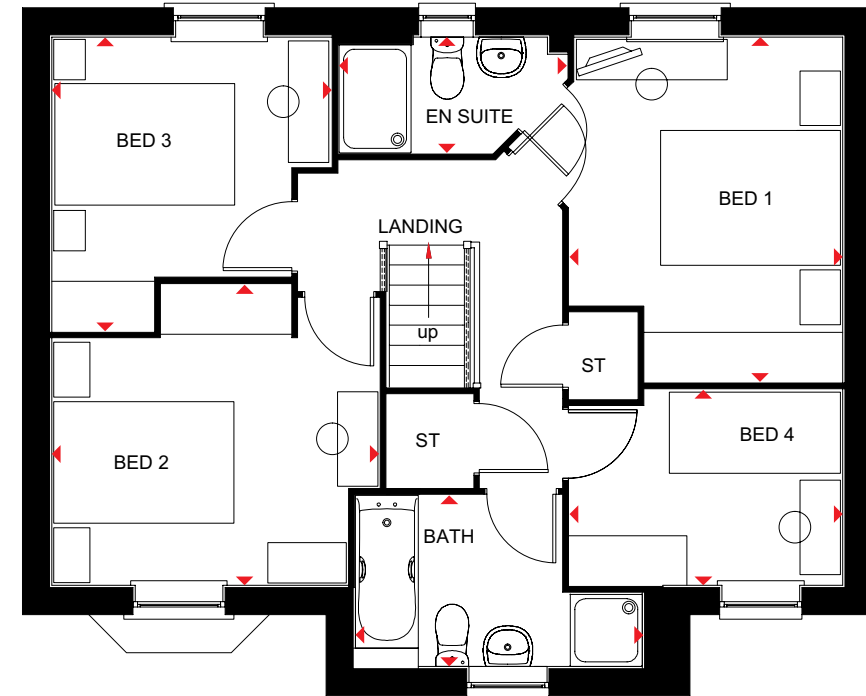
Key

B	Boiler	wm	Washing machine space	◀▶	Dimension location
ST	Store	dw	Dishwasher space		
f/f	Fridge/freezer space	td	Tumble dryer space		



Ground Floor

Lounge	3575 x 6487 mm	11'8" x 21'3"
Kitchen/Family/Dining	5065 x 4388 mm	16'7" x 14'4"
Utility	1552 x 2888 mm	5'1" x 9'6"
WC	1538 x 963 mm	5'0" x 3'2"



First Floor

Bedroom 1	3831 x 3035 mm	12'7" x 9'11"
En suite	1285 x 2529 mm	4'3" x 8'3"
Bedroom 2	3337 x 3636 mm	10'11" x 11'11"
Bedroom 3	3265 x 3105 mm	10'8" x 10'2"
Bedroom 4	3035 x 2170 mm	9'11" x 7'1"
Bathroom	3199 x 1900 mm	10'6" x 6'3"

We are on the New Homes Quality Code register of registered developers. "We" refers to the Barratt Developments PLC group brands including Barratt London, Barratt Homes and David Wilson Homes. All images used are for illustrative purposes. These and the dimensions given are illustrative for this house type and individual properties may differ. Please check with your Sales Adviser in respect of individual properties. We give maximum dimensions within each room which includes areas of fixtures and fittings including fitted furniture. These dimensions should not be used for carpet or flooring sizes, appliance spaces or items of furniture. All images, photographs and dimensions are not intended to be relied upon for, nor to form part of, any contract unless specifically incorporated in writing into the contract.

H452---7DS00/SP347856

dwh.co.uk



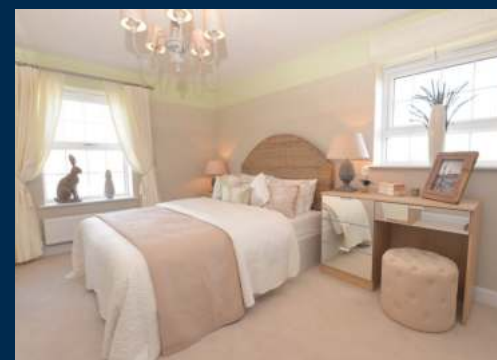
DAVID WILSON HOMES
WHERE QUALITY LIVES

THE HENLEY

FIVE BEDROOM DETACHED HOME



Individual plots may vary, please speak to the Sales Adviser



The Henley is an incredibly bright and spacious family home with attractive walk-in bay windows in three of the ground floor rooms. Its stylishness is apparent from the moment you step through the front door. The hall leads to a large lounge through elegant double doors, as well as to a separate dining room and an expansive open-plan

kitchen with breakfast area and family space. Both kitchen and lounge lead to the garden via French doors and there is also a separate utility room. The first floor is just as spacious with four double bedrooms, both the large master and Bedroom 2 with en suite. A single bedroom can be used as a study and there is also a family bathroom with shower.



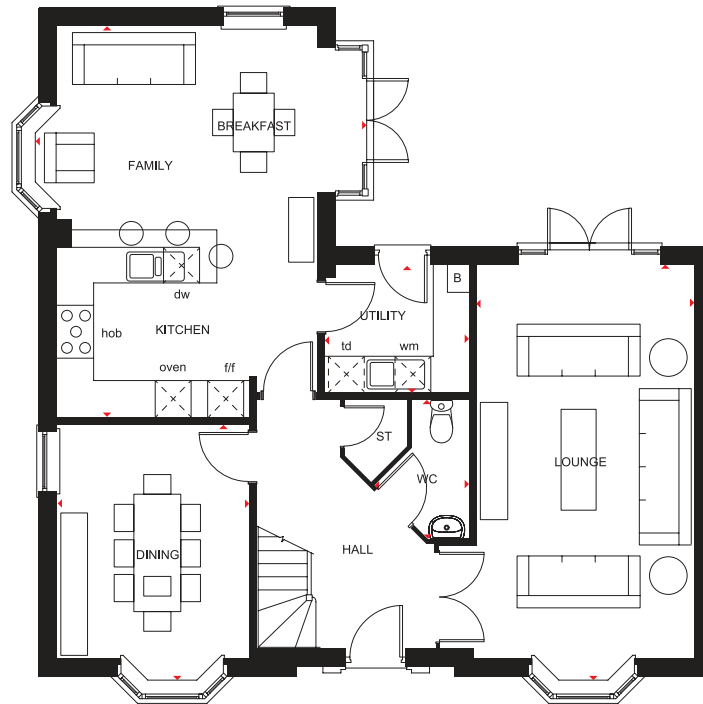
DAVID WILSON HOMES
WHERE QUALITY LIVES

THE HENLEY

FIVE BEDROOM DETACHED HOME

Key

B	Boiler	f/f	Fridge/freezer space	td	Tumble dryer space
ST	Store	wm	Washing machine space	◀▶	Dimension location
CYL	Cylinder	dw	Dishwasher space		



Ground Floor

Lounge	7050 x 3675 mm	23'1" x 12'1"
Kitchen/Family/Breakfast	6602 x 5600 mm	21'8" x 18'4"
Dining	4347 x 3225 mm	13'0" x 10'7"
Utility	2437 x 2150 mm	8'0" x 7'0"
WC	2340 x 1600 mm	7'8" x 5'3"



First Floor

Bed 1	6397 x 4403 mm	21'0" x 14'5"
En suite 1	2610 x 1390 mm	8'7" x 4'7"
Bed 2	3925 x 3286 mm	12'11" x 10'9"
En suite 2	2610 x 1374 mm	8'7" x 4'6"
Bed 3	3733 x 3112 mm	12'3" x 10'2"
Bed 4	3452 x 3211 mm	11'4" x 10'6"
Bed 5/Study	2849 x 2352 mm	9'4" x 7'9"
Bathroom	3023 x 2347 mm	9'11" x 7'8"

We are on the New Homes Quality Code register of registered developers. "We" refers to the Barratt Developments PLC group brands including Barratt London, Barratt Homes and David Wilson Homes. All images used are for illustrative purposes. These and the dimensions given are illustrative for this house type and individual properties may differ. Please check with your Sales Adviser in respect of individual properties. We give maximum dimensions within each room which includes areas of fixtures and fittings including fitted furniture. These dimensions should not be used for carpet or flooring sizes, appliance spaces or items of furniture. All images, photographs and dimensions are not intended to be relied upon for, nor to form part of, any contract unless specifically incorporated in writing into the contract.

H588---7DS00 / SP363982

dwh.co.uk



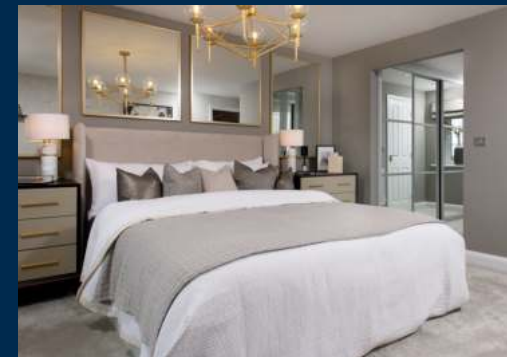
DAVID WILSON HOMES
WHERE QUALITY LIVES

THE WINSTONE

FOUR BEDROOM HOME



Individual plots may vary, please speak to the Sales Adviser



The Winstone is a truly magnificent detached family home. The elegant central hall leads to the stylish open-plan kitchen with bright breakfast and family areas, and a glazed bay leading to the garden. French doors also open onto the garden from the spacious lounge. The separate dining room, study and utility room

complete the ground floor. Upstairs are four double bedrooms, the beautiful main bedroom with dressing area and full en suite. The second bedroom also has an en suite, and the large bathroom with a separate shower provides for the rest of the family.



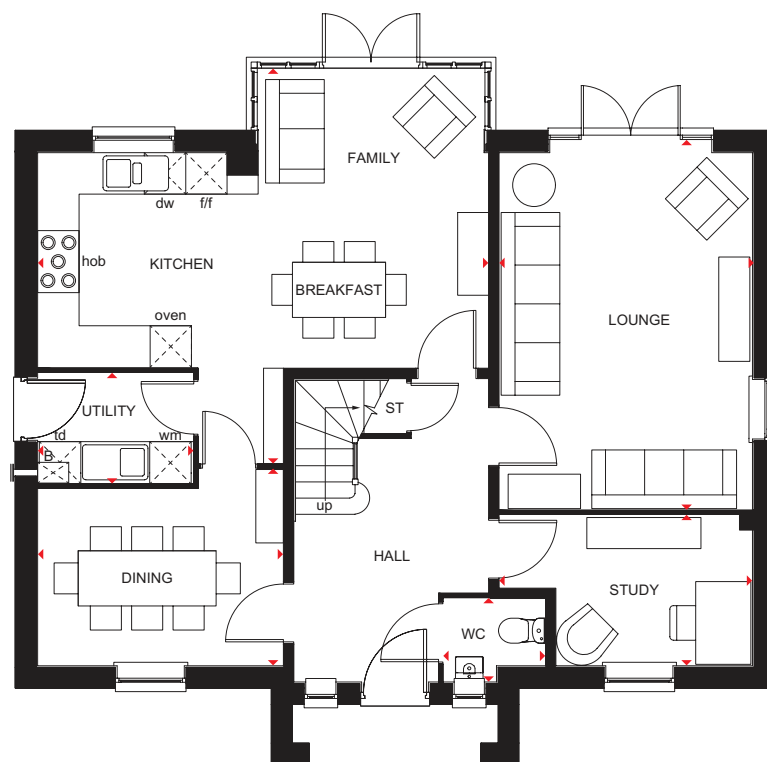
DAVID WILSON HOMES
WHERE QUALITY LIVES

THE WINSTONE

FOUR BEDROOM HOME

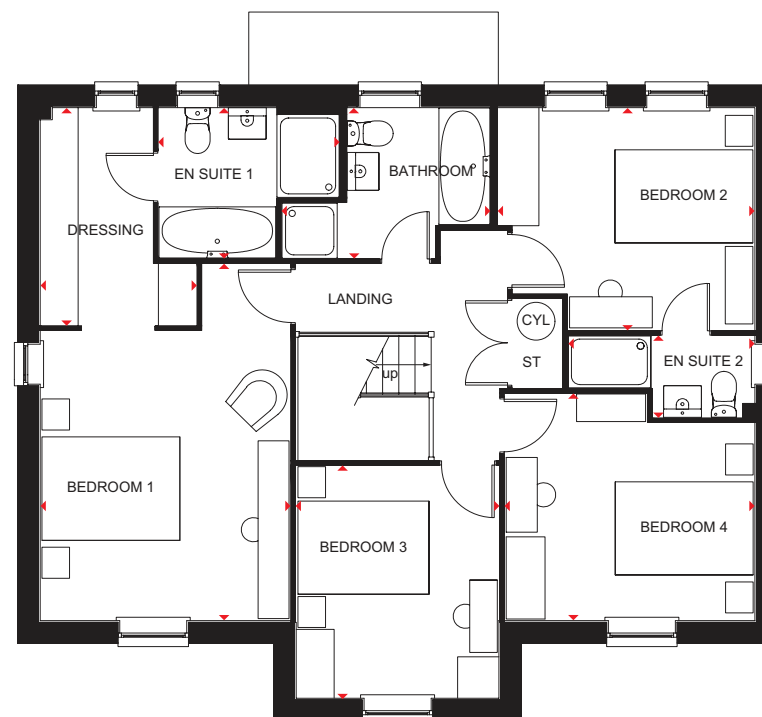
Key

B	Boiler	f/f	Fridge/freezer space	td	Tumble dryer space
ST	Store	wm	Washing machine space	◀▶	Dimension location
CYL	Cylinder	dw	Dishwasher space		



Ground Floor

Lounge	5171 x 3675 mm	16'11" x 12'0"
Kitchen/Family/ Breakfast	6540 x 5725 mm	21'5" x 18'9"
Dining	3563 x 2851 mm	11'8" x 9'4"
Study	3675 x 2180 mm	12'0" x 7'2"
Utility	2250 x 1591 mm	7'4" x 5'3"
WC	1475 x 1210 mm	4'10" x 4'0"



First Floor

Bedroom 1	5169 x 3624 mm	16'11" x 11'10"
Dressing	3155 x 2265 mm	10'4" x 7'5"
En Suite 1	2615 x 2182 mm	8'7" x 7'2"
Bedroom 2	3722 x 3223 mm	12'2" x 10'7"
En Suite 2	2710 x 1178 mm	8'11" x 3'10"
Bedroom 3	3368 x 2940 mm	11'1" x 9'8"
Bedroom 4	3623 x 3288 mm	11'10" x 10'9"
Bathroom	3014 x 2182 mm	9'10" x 7'2"

We are on the New Homes Quality Code register of registered developers. "We" refers to the Barratt Developments PLC group brands including Barratt London, Barratt Homes and David Wilson Homes. All images used are for illustrative purposes. These and the dimensions given are illustrative for this house type and individual properties may differ. Please check with your Sales Adviser in respect of individual properties. We give maximum dimensions within each room which includes areas of fixtures and fittings including fitted furniture. These dimensions should not be used for carpet or flooring sizes, appliance spaces or items of furniture. All images, photographs and dimensions are not intended to be relied upon for, nor to form part of, any contract unless specifically incorporated in writing into the contract.

BDW001830/SEP22

dwh.co.uk



DAVID WILSON HOMES
WHERE QUALITY LIVES