

THE PAVILIONS

BANBURY

DAVID WILSON HOMES

WHERE QUALITY LIVES

EXPERIENCE

— THE DAVID WILSON DIFFERENCE —

At David Wilson Homes we have been building quality homes across the UK for over 40 years. Our reputation is founded on our commitment to provide traditional homes in desirable locations built to a superb specification.

We* are delighted to have received over 90% homeowner recommendation since 2010. This Home Builders Federation accolade, recognises our commitment to bring you beautiful new homes.

Our collection of beautiful homes offer a range of spacious bedroom designs, located in highly desirable locations.

We would encourage you to come and experience the David Wilson Difference and we look forward to seeing you at one of our many developments.

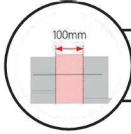


DAVID WILSON HOMES

WHERE QUALITY LIVES



Photovoltaics



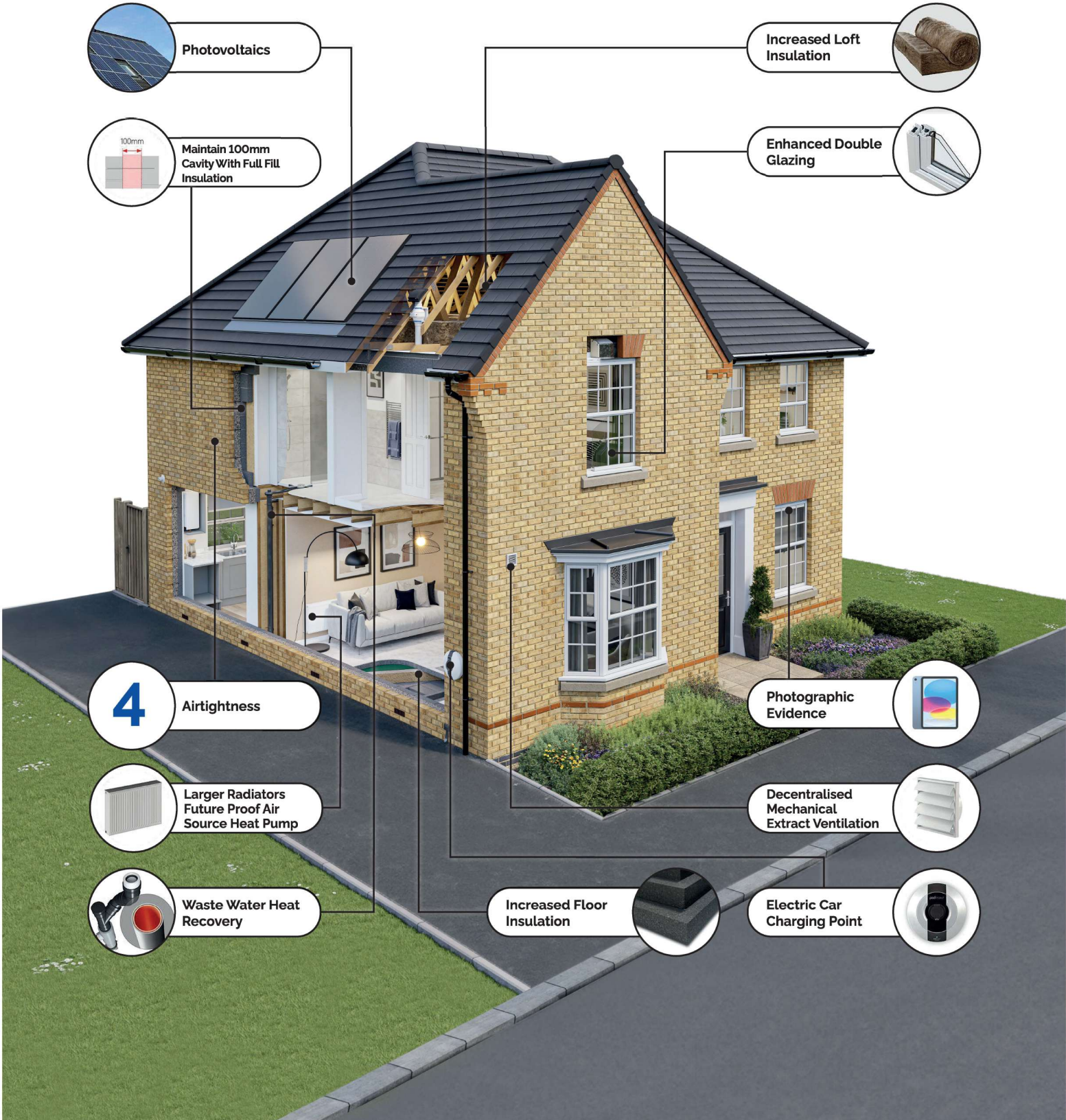
Maintain 100mm Cavity With Full Fill Insulation



Increased Loft Insulation



Enhanced Double Glazing



4

Airtightness



Photographic Evidence



Larger Radiators Future Proof Air Source Heat Pump



Decentralised Mechanical Extract Ventilation



Waste Water Heat Recovery



Increased Floor Insulation



Electric Car Charging Point

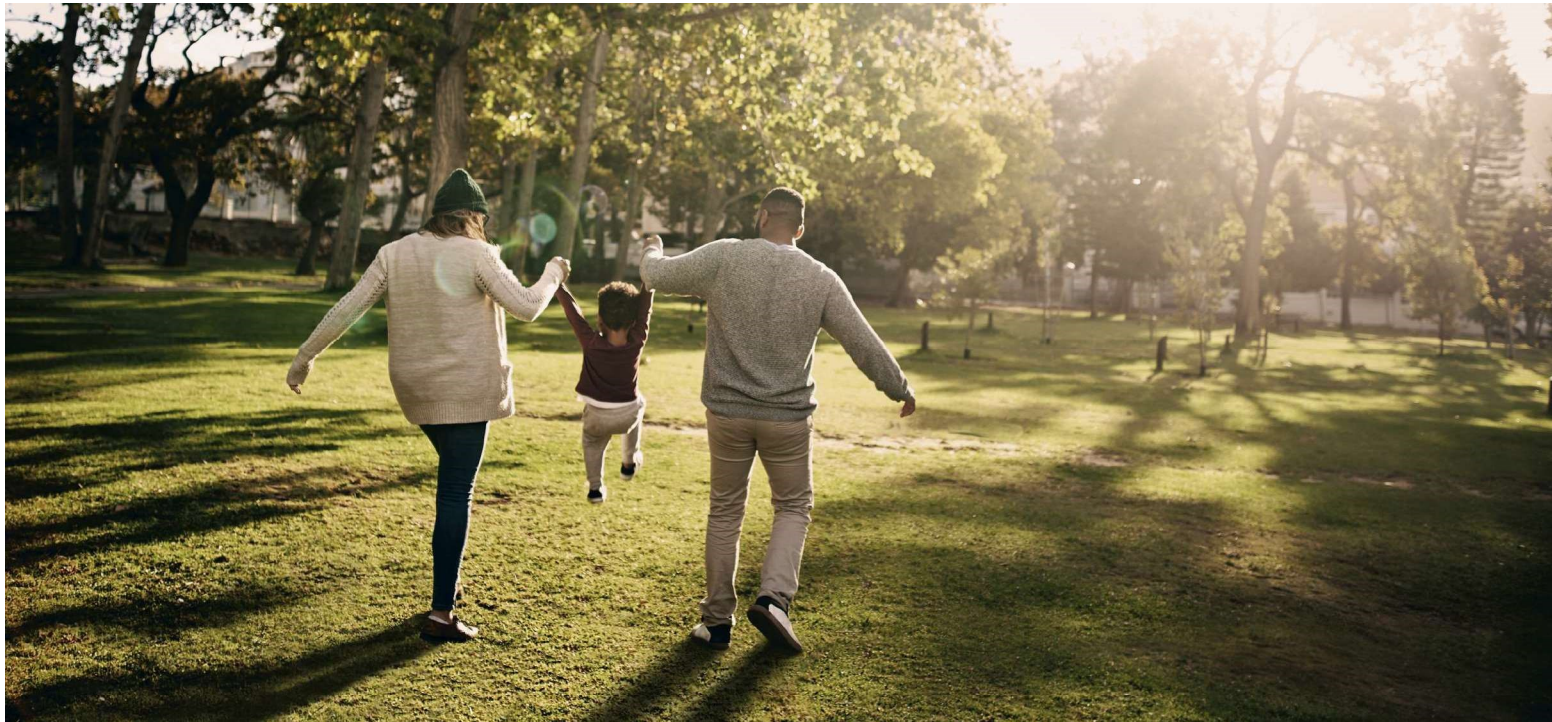


Scan here to discover more

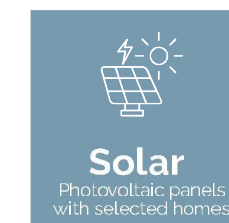
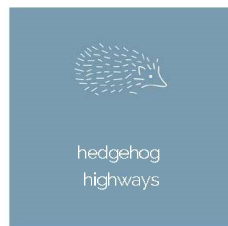
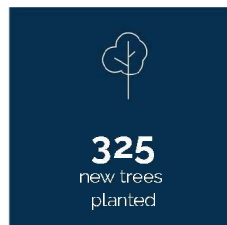
DAVID WILSON HOMES

CREATING A SUSTAINABLE COMMUNITY

WHERE FAMILIES AND NATURE CAN THRIVE AT THE PAVILIONS



Throughout the planning process before starting build, we consider where we can introduce nature and where we can strengthen it. At David Wilson Homes, we do more than simply craft beautiful homes and desirable developments. We design and build great places that meet the highest standards, and that promote sustainable, healthy and happy living for our customers. We know we must give our customers confidence that their homes are designed and built to meet the challenges of the future. We do this through creating places where people and nature can thrive.





THE PAVILIONS

BANBURY

- **The Wincham**
2 bedroom home
 - **The Ashdown**
2 bedroom home
 - **The Archford**
3 bedroom home
 - **The Hadley**
3 bedroom home
 - **The Fairway**
3 bedroom home
 - **The Shufford**
3 bedroom home
 - **The Hanwell**
3 bedroom home
 - **The Bloxham**
3 bedroom home
 - **The Kennett**
3 bedroom home
 - **The Ashington**
4 bedroom home
 - **The Kirkdale**
4 bedroom home
 - **The Hereford**
4 bedroom home
 - **The Herfford**
4 bedroom home
 - **The Bradgate**
4 bedroom home
 - **The Holden**
4 bedroom home
 - **The Avondale**
4 bedroom home
 - **The Manning**
5 bedroom home
 - **The Henley**
5 bedroom home
 - **Affordable Housing**
-
- SH** Show Home **SC** Sales Centre
 - BS** Bin Store **CS** Cycle Store
 - V** Visitor Parking Space
 - BCP** Bin Collection Point
 - S/S** Substation

-  **Parkland Area**
-  **New Tree Line**
-  **Existing Trees**
-  **School Car Parking**
-  **Balancing Pond**
-  **Swale**
-  **Play Area**

Giving nature a home on this development :

-  **Bat Box**
Selected plots*
-  **Bird Box**
Selected plots*

Positioning of our sustainability features are subject to change. Speak to a Sales Adviser for more information.



See the Difference at dwh.co.uk



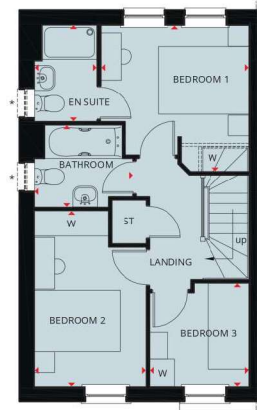
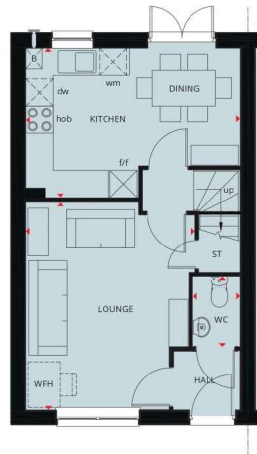
DAVID WILSON HOMES

WHERE QUALITY LIVES

Images and development layouts are for illustrative purposes, should be used for general guidance only and are not intended to form part of any contract or warranty unless specifically incorporated in writing. Development layouts including house types and tenures, the location of affordable housing, parking arrangements, play areas, landscaping and public open spaces are subject to change including any changes required due to a change in planning permission. The Pavilions is a marketing name only and may not be the designated postal address, which may be determined by The Post Office.

THE ARCHFORD

THREE BEDROOM HOME



* optional window refer to sales advisor for individual plots

Ground Floor

Lounge	4599 x 3746 mm	15'1" x 12'3"
Kitchen/Dining	4745 x 3310 mm	15'7" x 10'10"
WC	1561 x 1054 mm	5'1" x 3'5"

First Floor

Bedroom 1	3277 x 3229 mm	10'9" x 10'7"
En suite	2119 x 1385 mm	6'11" x 4'7"
Bedroom 2	3887 x 2475 mm	12'9" x 8'1"
Bedroom 3	2281 x 2186 mm	7'6" x 7'2"
Bathroom	2181 x 1815 mm	7'2" x 5'11"

Key

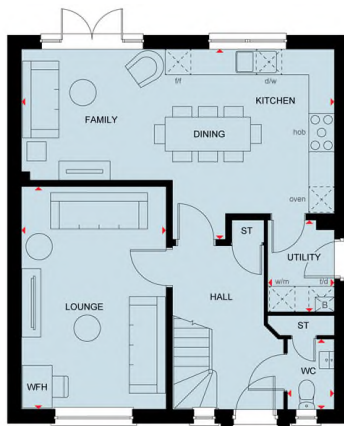
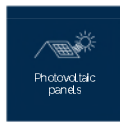
B	Boiler	wm	Washing machine space	dw	Dishwasher space	W	Wardrobe space
ST	Store	f/f	Fridge/freezer space	WFH	Working from home space	◀▶	Dimension location



DAVID WILSON HOMES

KIRKDALE

FOUR BEDROOM DETACHED HOME



Ground Floor

Lounge	3380 x 5617 mm	11'1" x 18'5"
Kitchen/Family/ Dining	17318 x 4460 mm	24'0" x 14'8"
Utility	1561 x 2150 mm	5'1" x 7'1"
WC	1095 x 1650 mm	3'7" x 5'5"



First Floor

Bedroom 1	3885 x 4119 mm	12'9" x 13'6"
En Suite	1425 x 2300 mm	4'8" x 7'7"
Bedroom 2	3350 x 4119 mm	11'0" x 13'6"
Bedroom 3	3447 x 3043 mm	11'4" x 10'0"
Bedroom 4	2725 x 3643 mm	8'11" x 12'0"
Bathroom	1987 x 2010 mm	6'6" x 6'7"

Key

B	Boiler	BH ST	Bulkhead Store	dw	Dishwasher space	td	Tumble dryer space	W	Wardrobe space
ST	Store	wm	Washing machine space	t/f	Fridge freezer space	WFH	Working from home space	◀▶	Dimension location



DAVID WILSON HOMES

We are on the New Homes Quality Code register of registered developers. "We" refers to the Barratt Developments PLC group brands including Barratt London, Barratt Homes and David Wilson Homes. All images used are for illustrative purposes. The images and the dimensions given are illustrative for this house type and individual properties may differ. Please check with your Sales Adviser in respect of individual properties. We give maximum dimensions within each room which includes areas of fixtures and fittings including fitted furniture. These dimensions should not be used for carpet or flooring sizes, appliance spaces or items of furniture. All images, photographs, dimensions and energy efficiency features depicted are not intended to be relied upon for, nor to form part of, any contract unless specifically incorporated in writing into the contract.

THE HOLDEN

FOUR BEDROOM DETACHED HOME



Ground Floor

Lounge	5797 x 3723 mm	19'0" x 12'3"
Kitchen/Dining	6142 x 4685 mm	20'2" x 15'4"
Study	2881 x 2361 mm	9'6" x 7'9"
Utility	2545 x 1588 mm	8'4" x 5'3"
WC	1498 x 1588 mm	4'11" x 5'3"



First Floor

Bedroom 1	4538 x 3728 mm	14'11" x 12'3"
En suite	2190 x 1471 mm	7'2" x 4'10"
Bedroom 2	4379 x 3728 mm	14'4" x 12'3"
Bedroom 3	4073 x 2881 mm	13'4" x 9'5"
Bedroom 4	3115 x 3043 mm	10'3" x 10'0"
Bathroom	2689 x 2266 mm	8'10" x 7'5"

Key

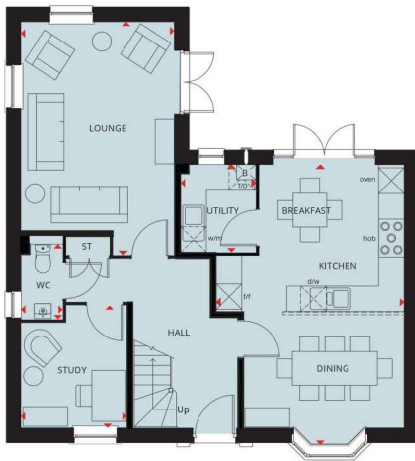
B Boiler	td Tumble dryer space	wm Washing machine space	CYL Cylinder	♦♦ Dimension location
ST Store	f/f Fridge/freezer space	dw Dishwasher space	W Wardrobe space	



DAVID WILSON HOMES

THE AVONDALE

FOUR BEDROOM HOME



Ground Floor

Lounge	5488 x 3605 mm	18'0" x 11'10"
Kitchen/Breakfast/Dining	6590 x 4415 mm	21'7" x 14'6"
Utility	2060 x 1761 mm	6'9" x 5'9"
Study	2878 x 2488 mm	9'5" x 8'2"
WC	1768 x 975 mm	5'10" x 3'2"

First Floor

Bedroom 1	5585 x 3605 mm	18'3" x 11'10"
Ensuite	2222 x 1433 mm	7'3" x 4'8"
Bedroom 2	5225 x 2792 mm	17'1" x 9'2"
Bedroom 3	3563 x 3308 mm	11'8" x 10'10"
Bedroom 4	3853 x 2547 mm	12'7" x 8'4"
Bathroom	2871 x 1927 mm	9'5" x 6'4"

Key

B	Boiler	f/f	Fridge/freezer space	wm	Washing machine space	W	Wardrobe space
ST	Store	dw	Dishwasher space	td	Tumble dryer space	↔	Dimension location



DAVID WILSON HOMES

NEW HOMES

Quality Code



Housebuilders and developers who build new homes will be expected to register with the [New Homes Quality Board](#) (NHQB). As long as a housebuilder or developer has followed the correct registration process, including completing the necessary training, introducing a complaints procedure, and following other processes and procedures that are needed to meet the requirements of this New Homes Quality Code (the code), they will become a registered developer.

Registered developers agree to follow the code and the New Homes Ombudsman Service, including accepting the decisions of the New Homes Ombudsman in relation to dealings with customers. If a registered developer does not meet the required standards, or fails to accept and act in line with the decisions of the New Homes Ombudsman, they may have action taken against them, including being removed from the register of registered developers.

The code sets out the requirements that registered developers must meet. The code may be updated from time to time to reflect changes to industry best practice as well as the decisions of the New Homes Ombudsman Service.

All homes built by registered developers must meet building-safety and other regulations. All registered developers should aim to make sure there are no snags or defects in their properties before the keys are handed over to a customer. If there are any snags or defects, these should be put right within the agreed timescales.

What the code covers

For the purposes of this code, 'customer' means a person who is buying or intends to buy a new home which they will live in or give to another person. (If a new home is being bought in joint names, 'the customer' includes all the joint customers.) However, the New

Homes Quality Board have also started work to consider other groups of customers and what they should be able to expect from a new home. This includes shared owners and people who are buying a new home to let to other people. Any changes the New Homes Quality Board make to the code to reflect the needs of other groups of customers will be developed through consultation, and they will continually assess and review the effectiveness of the code, and any new laws or regulations that apply. Other areas which are not covered by the code are claims for loss of property value or blight (where a property falls in value or becomes difficult to sell because of major public work in the area), personal injury or claims that are not covered by the scheme rules of the New Homes Ombudsman Service.



DAVID WILSON HOMES

WHERE QUALITY LIVES

dwh.co.uk or call 033 3355 8479