

HARRIER CHASE

BLLENHEIM AVENUE, BROUGH HU15 1WP



STYLISH 2, 3 & 4 BEDROOM HOMES



AWARD-WINNING CUSTOMER SERVICE AND QUALITY

WITH YOU EVERY STEP OF THE WAY

Barratt Homes has years of experience building thoughtfully designed, high-quality homes. We've been awarded 5 stars[^] by the Home Builders Federation year after year – and that's not all. Our homes come with an NHBC Buildmark Warranty* which gives you a 10 year structural warranty and a 2 year fixtures and fittings warranty as standard. This is just one of the added benefits of buying a new Barratt home.

We do all we can to make moving easy, putting people in touch with dedicated experts throughout the journey, which is why for more than 50 years, we have earned ourselves an enviable reputation for excellence.

At Barratt we build every type of home for every type of home buyer, in great locations the length and breadth of the country. Whether you're putting your first foot on the property ladder, moving up to a larger home or even downsizing, Barratt can help you find the home that suits you perfectly.



OUTSTANDING DESIGN

**BARRATT HOMES ARE BUILT AROUND
THE WAY YOU WANT TO LIVE**

Careful consideration and attention to detail goes into every home we build, and our homes are flexible and adaptable to suit every lifestyle. Open-plan living spaces are integral to our design, helping you make the most of space and natural light, and allowing every room to be enjoyed to its maximum potential.

We also know how vital outdoor space is in creating places people love to live in. Whether it's gardens or landscaped areas, we make sure there's plenty surrounding the homes we build, for the whole neighbourhood to enjoy.





STUNNING HOMES IN A GREAT LOCATION

**HARRIER CHASE ENJOYS A GREAT LOCATION AT THE
EDGE OF THE FRIENDLY TOWN OF BROUGH, WITH
ENVIABLE VIEWS ACROSS THE HUMBER ESTUARY.**

This new development benefits from being close to the town, with easy access to schools, supermarkets, and local shopping. It's also easy to commute and explore the region, thanks to quick transport links including the A63 and M62, with Hull just a 17-minute drive away.



HARRIER CHASE

DEVELOPMENT LAYOUT

- **Roseberry**
2 bedroom home
- **Palmerston**
3 bedroom home
- **Maidstone**
3 bedroom home
- **Derwent**
3 bedroom home
- **Denby**
3 bedroom home
- **Windermere**
4 bedroom home
- **Kingsley**
4 bedroom home
- **Ripon**
4 bedroom home
- **Alderney**
4 bedroom home
- **Halton**
4 bedroom home
- **Radleigh**
4 bedroom home

- SH** Show Home **SC** Sales Centre
- V** Visitor Parking Space
- BCP** Bin Collection Point
- S/S** Substation



Giving nature a home on this development:

Hedgehog Highway



Gravel Path



Existing Trees



Kick About Area



Play Area



Picnic Area



Positioning of our sustainability features are subject to change. Speak to a Sales Advisor for more information.

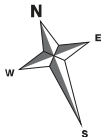
Electric Vehicle charging

Electric vehicle charging points are included on every home. Please speak to your Sales Advisor for specific plot locations



Photovoltaic panels

Photovoltaic panels are included on every home



barratthomes.co.uk


BARRATT
HOMES

Images and development layouts are for illustrative purposes, should be used for general guidance only and are not intended to form part of any contract or warranty unless specifically incorporated in writing. Development layouts including house types and tenures, the location of affordable housing, parking arrangements, play areas, landscaping and public open spaces are subject to change including any changes required due to a change in planning permission. Harrier Chase is a marketing name only and may not be the designated postal address, which may be determined by The Post Office.

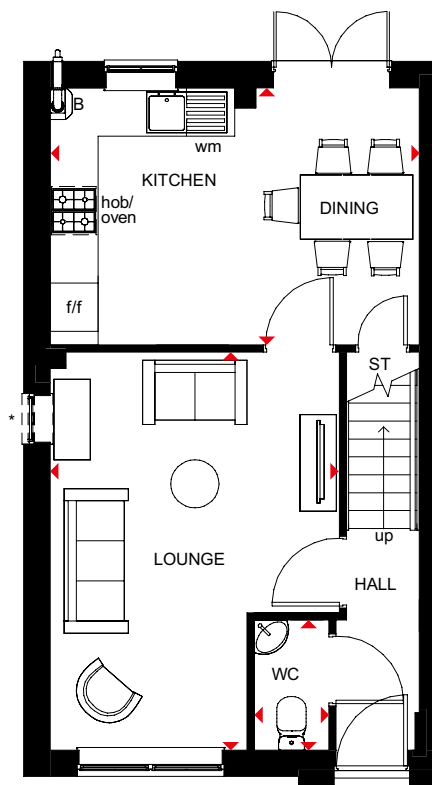
Rev: M

MAIDSTONE

3 BEDROOM HOME



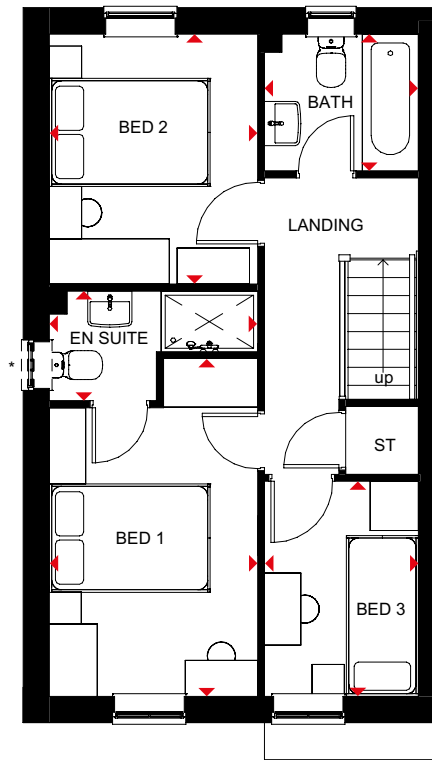
- An ideal family home designed with plenty of space for modern living
- The ground floor comprises a good-sized lounge and an open-plan kitchen with dining area and French doors leading to the garden
- The first floor has two double bedrooms – the generous main with en suite – a single bedroom and family bathroom



Ground Floor

Lounge	4955 x 3604mm	16'3" x 11'10"
Kitchen/Dining	3202 x 4598mm	10'6" x 15'1"
WC	932 x 1620mm	3'1" x 5'4"

[Approximate dimensions]
* Window may be omitted on certain plots. Speak to a Sales Adviser for details on individual plots



First Floor

Bedroom 1	4204 x 2592mm	13'10" x 8'6"
En Suite	1365 x 2592mm	4'6" x 8'6"
Bedroom 2	3112 x 2592mm	10'3" x 8'6"
Bedroom 3	1918 x 2676mm	6'4" x 8'9"
Bathroom	1918 x 1702mm	6'4" x 5'7"

[Approximate dimensions]
* Window may be omitted on certain plots. Speak to a Sales Adviser for details on individual plots

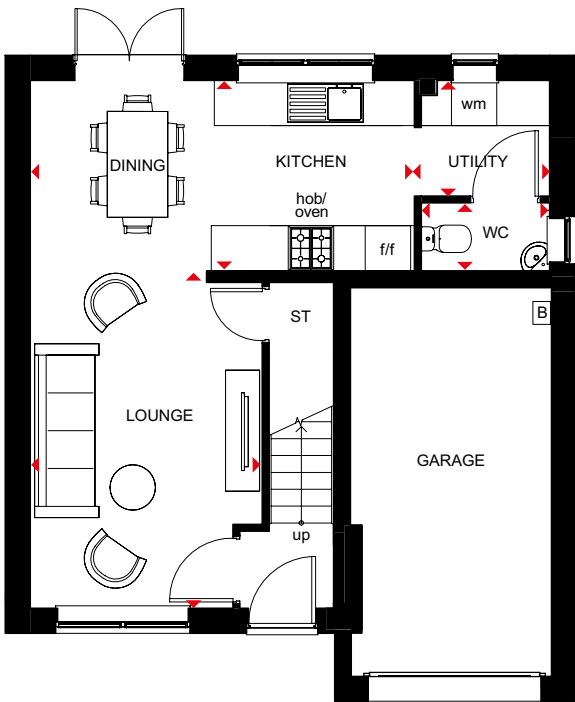
KEY B Boiler
ST Store
wm Washing machine space

f/f Fridge/freezer space
◀▶ Dimension location

3 BEDROOM DETACHED HOME



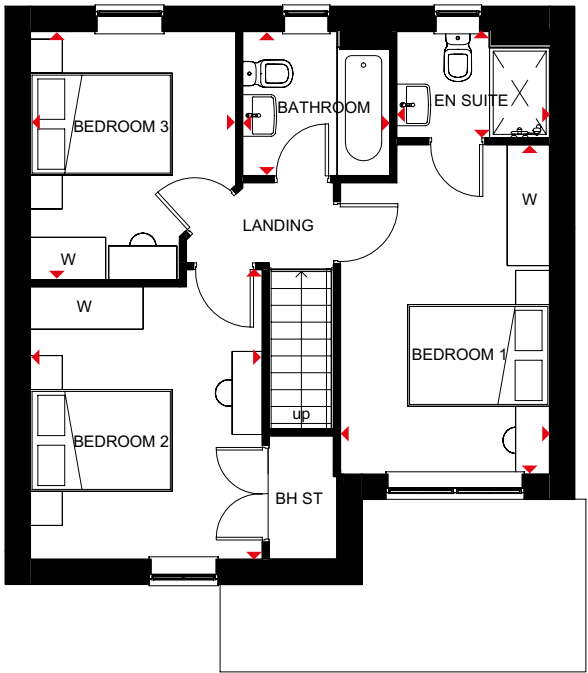
- Free-flowing living space creates a flexible family home
- Large windows and French doors to the rear garden give the open-plan lounge, dining area, kitchen and utility a bright and airy feeling
- Integral garage adds convenience and security
- Upstairs are three double bedrooms – the main bedroom with en suite – and the family bathroom



Ground Floor

Lounge	3072 x 4462mm	10'1" x 14'8"
Kitchen/Dining	5085 x 2523mm	16'8" x 8'3"
Utility	1789 x 1533mm	5'10" x 5'0"
WC	1701 x 903mm	5'7" x 3'0"

[Approximate dimensions]



First Floor

Bedroom 1	2770 x 4361mm	9'1" x 14'4"
En Suite	2026 x 1412mm	6'8" x 4'8"
Bedroom 2	3072 x 3834mm	10'1" x 12'7"
Bedroom 3	2722 x 3289mm	8'11" x 10'9"
Bathroom	1950 x 1913mm	6'5" x 6'3"

[Approximate dimensions]

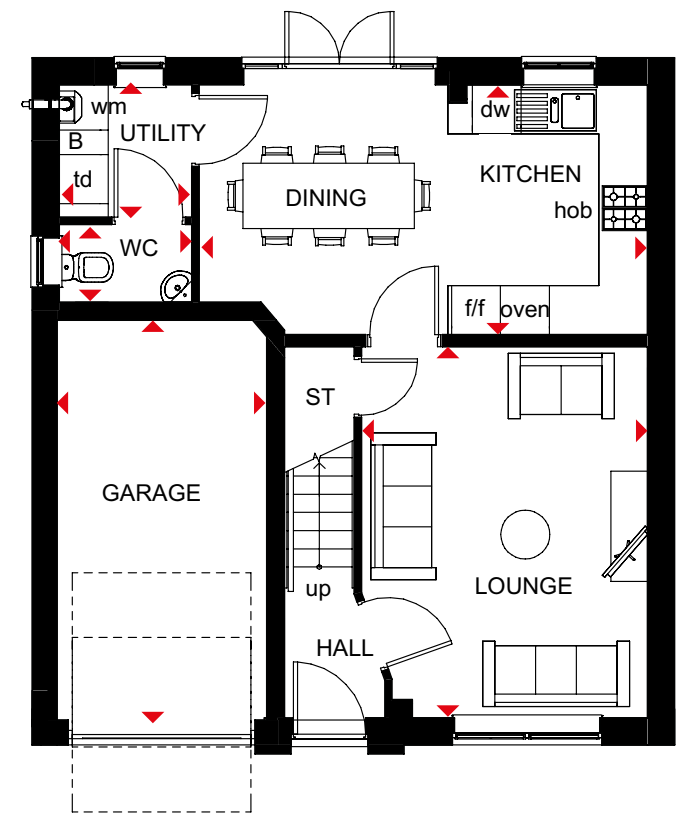
KEY	B	Boiler	f/f	Fridge/freezer space
	ST	Store	w	Wardrobe
	wm	Washing machine space		

WINDERMERE

4 BEDROOM DETACHED HOME



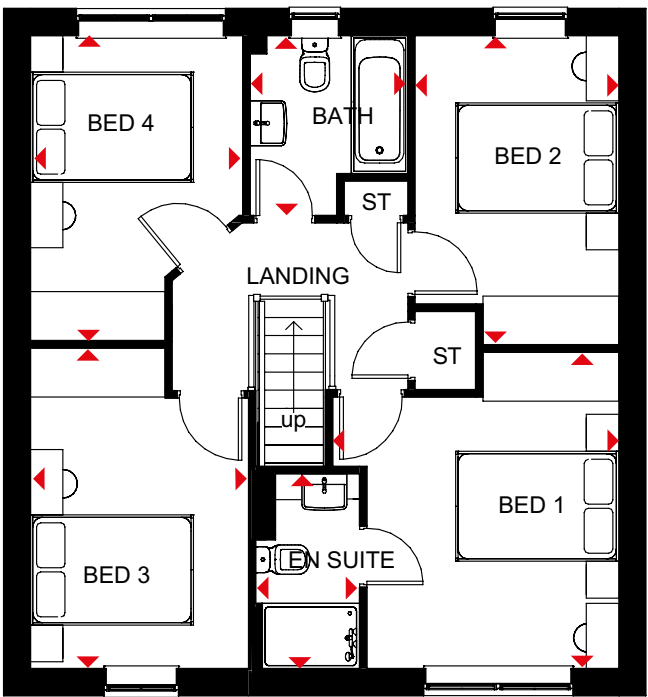
- Light flows into this bright, airy family home through oversized windows, giving a feeling of spaciousness
- The large open-plan kitchen is ideal for modern living with a dining area that has French doors leading to the garden, and a separate utility room
- A spacious lounge is the perfect place for all the family to relax in
- Upstairs are four double bedrooms, the main with en suite, and a family bathroom



Ground Floor

Lounge	3506 x 4548mm	11'6" x 14'11"
Kitchen/Dining	5497 x 3060mm	18'0" x 10'0"
Utility	1627 x 1623mm	5'4" x 5'4"
WC	1627 x 952mm	5'4" x 3'1"
Garage	2568 x 4900mm	8'5" x 16'1"

[Approximate dimensions]



First Floor

Bedroom 1	3506 x 3881mm	11'6" x 12'9"
En Suite	1272 x 2390mm	4'2" x 7'10"
Bedroom 2	2498 x 3791mm	8'2" x 12'5"
Bedroom 3	2675 x 3931mm	8'9" x 12'11"
Bedroom 4	2604 x 3739mm	8'7" x 12'3"
Bathroom	1934 x 2208mm	6'4" x 7'3"

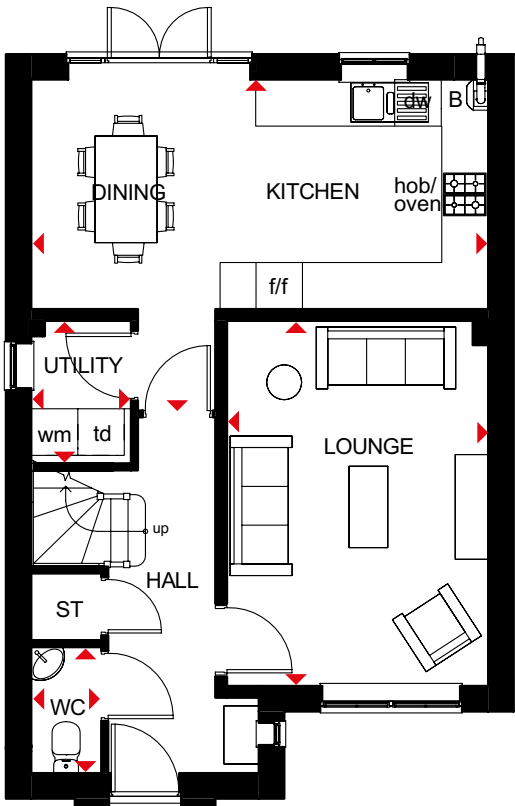
[Approximate dimensions]

KEY	B	Boiler	f/f	Fridge/freezer space	◀▶	Dimension location
	ST	Store	dw	Dishwasher space		
	wm	Washing machine space	td	Tumble dryer space		

4 BEDROOM DETACHED HOME



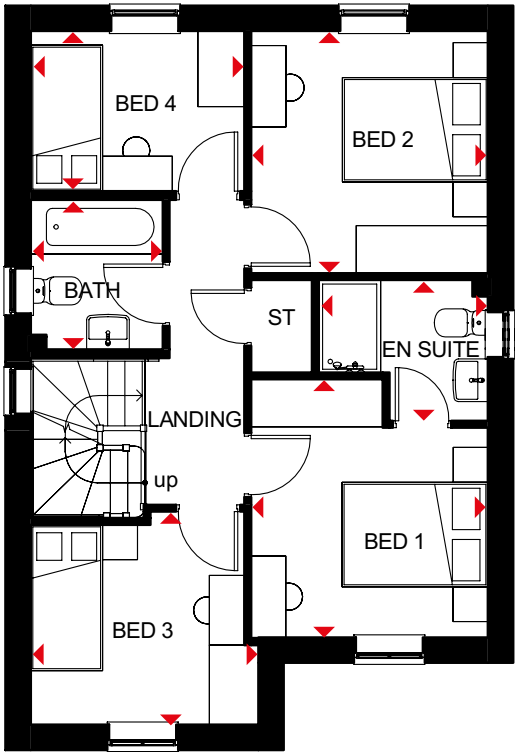
- Bright, airy family home with oversized windows to maximise light
- The large open-plan kitchen has a dining area with French doors leading to the garden; there is also a separate utility room
- The spacious lounge is a great place for the family to relax in
- Upstairs are two double bedrooms, the main with en suite, two single bedrooms and a family bathroom



Ground Floor

Lounge	3370 x 4710mm	11'1" x 15'5"
Kitchen/Dining	5895 x 4268mm	19'4" x 14'0"
WC	904 x 1627mm	3'0" x 5'4"
Utility	1287 x 1841mm	4'3" x 6'0"

[Approximate dimensions]



First Floor

Bedroom 1	3054 x 3328mm	10'0" x 10'11"
En Suite	2181 x 1816mm	7'2" x 5'11"
Bedroom 2	3054 x 3123mm	10'0" x 10'3"
Bedroom 3	2935 x 2747mm	9'8" x 9'0"
Bedroom 4	2754 x 2065mm	9'0" x 6'9"
Bathroom	1700 x 1937mm	5'7" x 6'4"

[Approximate dimensions]

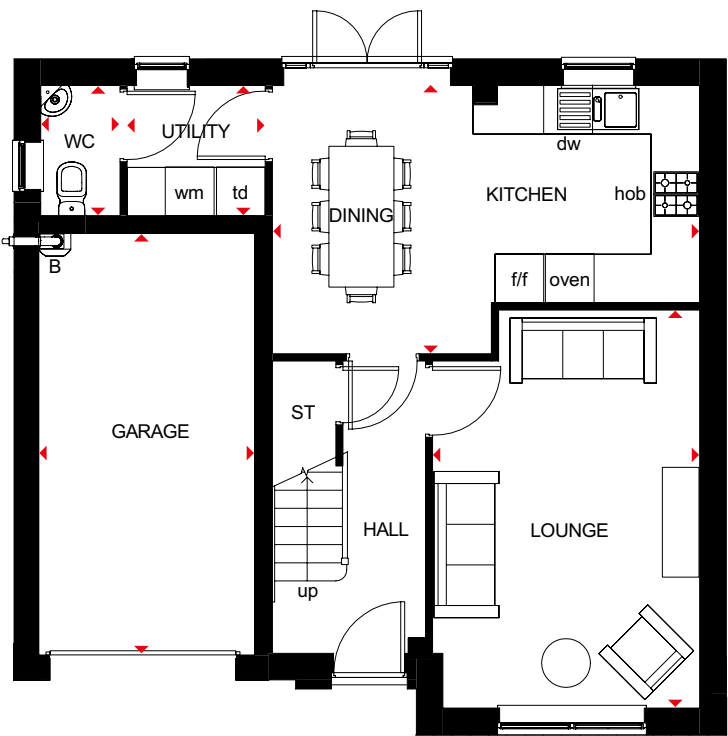
KEY	B	Boiler	f/f	Fridge/freezer space	◀▶	Dimension location
	ST	Store	dw	Dishwasher space		
	wm	Washing machine space	td	Tumble dryer space		

RIPON

4 BEDROOM DETACHED HOME



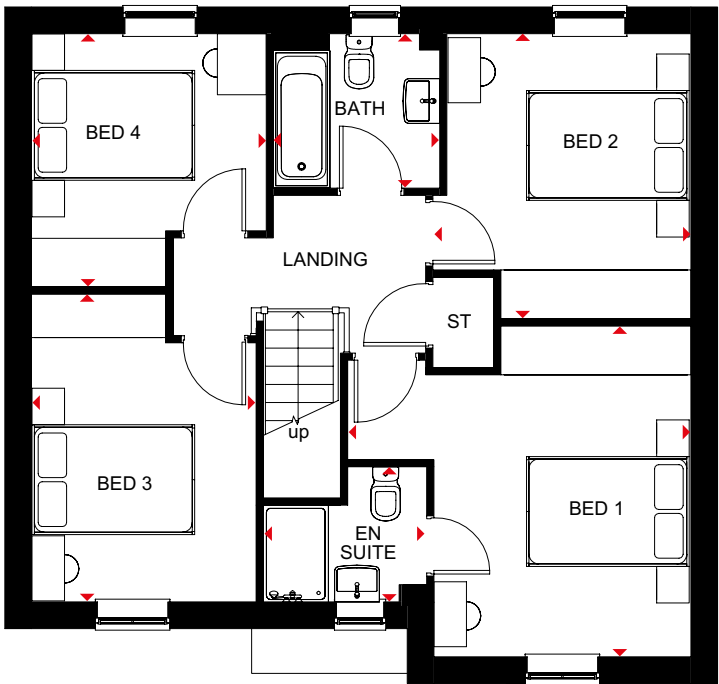
- Bright and spacious four bedroom family home with oversized windows allowing light to flow through
- As well as a generous lounge, the open-plan kitchen with dining area provides room for all the family to enjoy. There is also a separate utility
- Upstairs are three double bedrooms, main with en suite, a single bedroom and family bathroom



Ground Floor

Lounge	4898 x 3287mm	16'1" x 10'9"
Kitchen/Dining	5259 x 3151mm	17'3" x 10'4"
Utility	1700 x 1602mm	5'7" x 5'3"
WC	976 x 1602mm	3'2" x 5'3"
Garage	5189 x 2657mm	17'0" x 8'9"

[Approximate dimensions]



First Floor

Bedroom 1	4196 x 4068mm	13'9" x 13'4"
En Suite	2011 x 1661mm	6'7" x 5'5"
Bedroom 2	3174 x 3504mm	10'5" x 11'6"
Bedroom 3	2764 x 3774mm	9'1" x 12'5"
Bedroom 4	2888 x 3123mm	9'6" x 10'3"
Bathroom	2046 x 1899mm	6'9" x 6'3"

[Approximate dimensions]

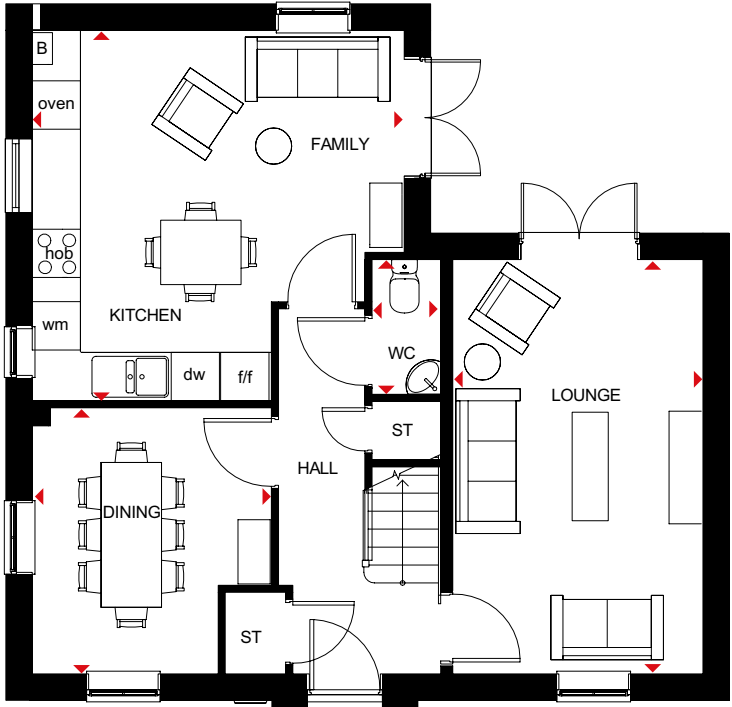
KEY	B	Boiler	f/f	Fridge/freezer space	◀▶	Dimension location
	ST	Store	dw	Dishwasher space		
	wm	Washing machine space	td	Tumble dryer space		

ALDERNEY

4 BEDROOM DETACHED HOME



- A large fitted kitchen with family and breakfast areas provides this spacious home with the ideal hub for all the family
- French doors leading to the rear garden from both the kitchen and the separate lounge give it a bright and airy feeling, and there is a separate dining room with dual-aspect windows
- Upstairs are three double bedrooms, the main bedroom with en suite, a single bedroom and a family bathroom



Ground Floor

Lounge	5148 x 3110mm	16'11" x 10'2"
Kitchen/ Family Room	4623 x 4603mm	15'2" x 15'1"
Dining Room	3307 x 2972mm	10'10" x 9'9"
WC	1675 x 853mm	5'6" x 2'10"

(Approximate dimensions)



First Floor

Bedroom 1	4623 x 3104mm	15'2" x 10'2"
En Suite	2075 x 1191mm	6'10" x 3'11"
Bedroom 2	4523 x 3115mm	14'10" x 10'3"
Bedroom 3	3724 x 3115mm	12'3" x 10'3"
Bedroom 4	2275 x 2163mm	7'6" x 7'1"
Bathroom	2075 x 1697mm	6'10" x 5'7"

(Approximate dimensions)

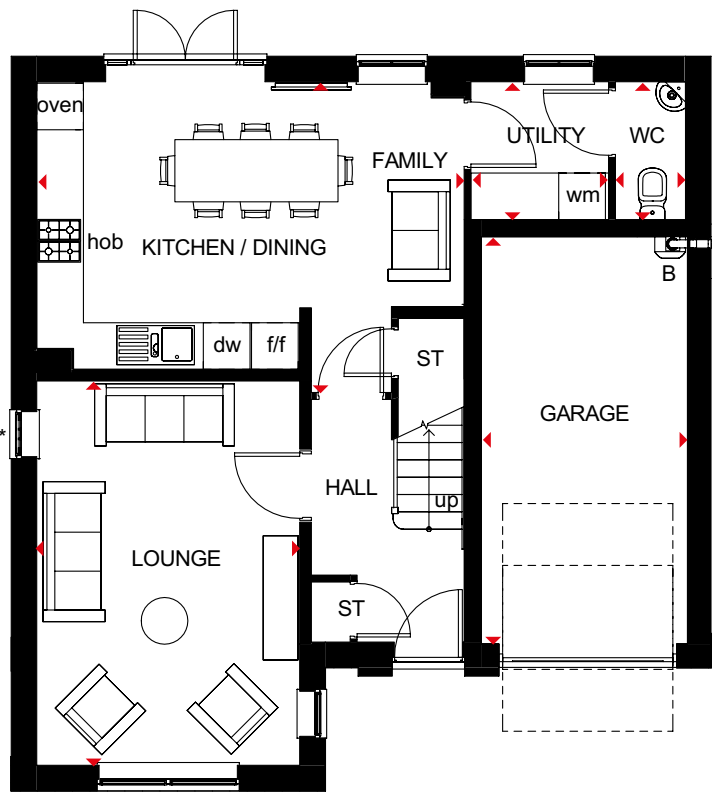
KEY	B	Boiler	f/f	Fridge/freezer space
	ST	Store	dw	Dishwasher space
	wm	Washing machine space	◀▶	Dimension location

HALTON

4 BEDROOM DETACHED HOME



- A generously proportioned, bright and airy family home with integral garage
- The large open-plan kitchen has French doors leading to the rear garden from the dining and family areas; there is also a separate utility room
- The spacious lounge provides the perfect place for all the family to relax
- Upstairs there are four double bedrooms, the main with en suite, and a family bathroom

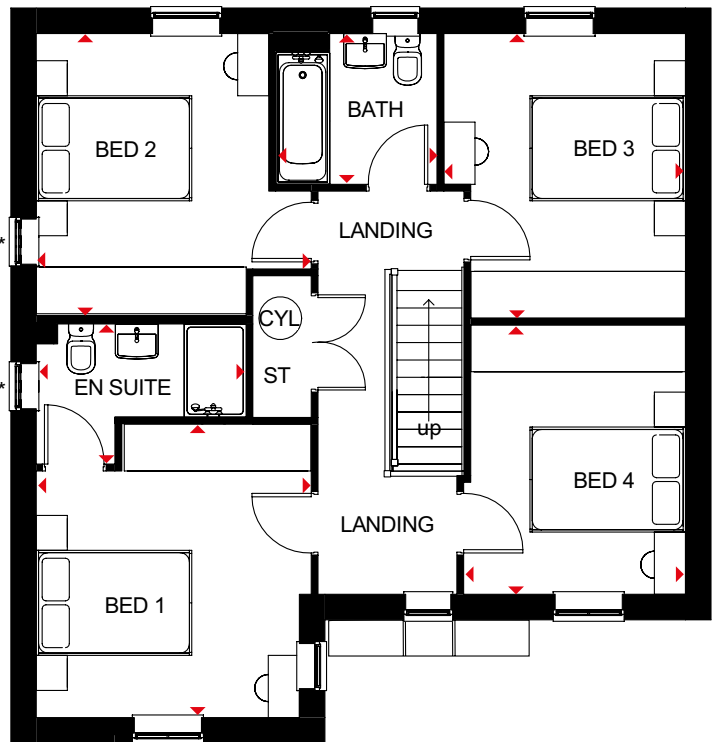


Ground Floor

Lounge	3385 x 4943mm	11'1" x 16'3"
Kitchen/Dining/ Family	5501 x 4000mm	18'1" x 13'1"
WC	903 x 1776mm	3'0" x 5'10"
Utility	1771 x 1776mm	5'10" x 5'10"
Garage	5240 x 2655mm	17'2" x 8'9"

(Approximate dimensions)

*Windows may be omitted on certain plots.
Speak to a Sales Adviser for details on individual plots.



First Floor

Bedroom 1	3536 x 3780mm	11'7" x 12'5"
En Suite	2698 x 1801mm	8'10" x 5'11"
Bedroom 2	3627 x 3536mm	11'11" x 11'7"
Bedroom 3	3108 x 3660mm	10'2" x 12'0"
Bedroom 4	2853 x 3463mm	9'4" x 11'4"
Bathroom	2076 x 1939mm	6'10" x 6'4"

(Approximate dimensions)

*Windows may be omitted on certain plots.
Speak to a Sales Adviser for details on individual plots.

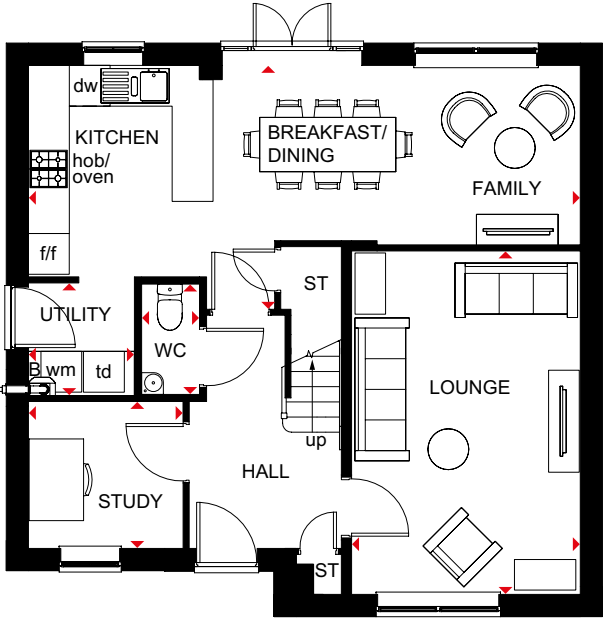
KEY	B	Boiler	wm	Washing machine space	◀▶	Dimension location
	ST	Store	f/f	Fridge/freezer space		
	CYL	Cylinder	dw	Dishwasher space		

RADLEIGH

4 BEDROOM DETACHED HOME



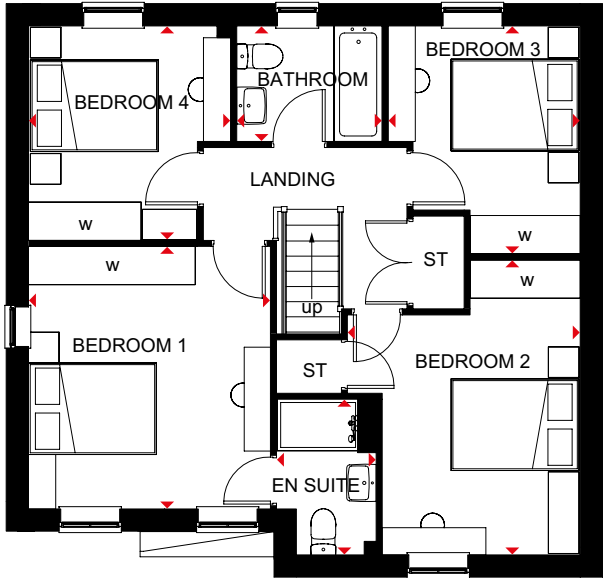
- A bright and airy family home garage
- The large open-plan kitchen has dining and family areas and French doors leading to the garden. There is also a separate utility room
- A spacious lounge and separate study are also on the ground floor
- Upstairs are four double bedrooms, the main bedroom with en suite shower room, and a family bathroom



Ground Floor

Lounge	3361 x 5046mm	11'0" x 16'7"
Kitchen/ Dining/Family	8110 x 3583mm	26'7" x 11'9"
Utility	1558 x 1655mm	5'1" x 5'5"
Study	2273 x 2158mm	7'5" x 7'1"
WC	884 x 1655mm	2'11" x 5'5"

(Approximate dimensions)



First Floor

Bedroom 1	3570 x 3858mm	11'9" x 12'8"
En Suite	1452 x 2289mm	4'9" x 7'6"
Bedroom 2	3423 x 4335mm	11'3" x 14'3"
Bedroom 3	2824 x 3350mm	9'3" x 11'0"
Bedroom 4	2973 x 3152mm	9'9" x 10'4"
Bathroom	2137 x 1699mm	7'0" x 5'7"

(Approximate dimensions)

KEY	B	Boiler	f/f	Fridge/freezer space	w	Wardrobe space
	ST	Store	dw	Dishwasher space	◀▶	Dimension location
	wm	Washing machine space	td	Tumble dryer space		

CUSTOMER SERVICE BY BARRATT HOMES

BUILDING OUR CUSTOMER SERVICE TO BE THE BEST

At Barratt we are genuinely committed to delivering the highest standards of customer service. The same exacting standards that have helped us win more quality awards than any other major housebuilder also ensure we look after our customers as well as we possibly can.

We believe that solid foundations are as important to a customer relationship as they are to a building. During the planning and design process we go to great lengths to make sure the homes and developments we build are perfectly in tune with the needs and aspirations of their prospective owners.

Our Directors carry out weekly site inspections before, during and after the build process. As your home is built, it is checked at every stage to ensure it reaches the exacting standards we demand.

Our Customer Service Charter lays out our commitments to you and details the care, support and assistance we'll provide you with throughout your purchase and long after you've moved in.

As a result of the outstanding service we provide to our customers, we have been awarded the exceptional accreditation of "5 Star Builder" by the independent Home Builders Federation. 29,000 homebuyers across the country took part in the survey and this honour recognises the highest levels of positive recommendation by our customers, as well as the superior build quality of our homes.



5 GREAT REASONS TO BUY WITH BARRATT

1. 5 Stars for Customer Satisfaction

No other major national housebuilder** has been awarded a Home Builders Federation 5 Star Housebuilder accolade every year since 2010. All thanks to positive recommendations by our customers.

2. Building homes for over 5 decades

We've been established for over 5 decades and in that time have built over 300,000 new homes. Our commitment to quality and innovation is shown in the highest standards of design, construction, finish and the customer service we provide.

3. Award winners, time and time again

Our steadfast commitment to quality has ensured that for the eighteenth year in a row our site managers have picked up more awards than any other housebuilder, winning NHBC Pride in the Job awards for their workmanship and demonstrating our dedication and commitment to building homes of the very highest standard.

4. Creating places where you'll love to live both inside and out

Our light, open-plan properties are really adaptable – every room can suit a variety of lifestyles. Whether you want space for the kids to play or more room to entertain friends, our fantastic range of homes can give you that flexibility.

We also know our customers love green open spaces and we go to great lengths to maintain and enhance the local environment on our developments. In fact, we plant an average of 20 shrubs or trees for each home we build, creating a beautiful and sustainable environment to live in.

5. Our energy-efficient homes could save you money

Every home we build is sustainable and energy efficient – minimising their impact on the environment, whilst reducing your energy costs too. Our homes could save you money by being up to 69% more energy efficient than a same sized older home – even after it's been modernised. As a result, you could save a staggering £1,418*** per year on your energy bill.

Find out more, talk to one of our Sales Advisers today.



Images may include optional upgrades at additional cost. All information in this document is correct to the best of our knowledge at the time of going to print. Harrier Chase is a marketing name only and may not be the designated postal address, which may be determined by The Post Office. All distances/journey times are approximate and are from Google Maps. Terms, conditions and exclusions apply. See website or local Sales Centre for details. See our website or speak to one of our Sales Advisers for details. *^we" refers to the Barratt Developments PLC group brands. *First 2 years covered by Builder Warranty or similar. Years 3-10 covered by NHBC insurance or similar. Available on virtually all of our developments. Your statutory rights are unaffected. **^we" Refers to the Barratt Developments PLC group brands. ***we" are the only major national housebuilder to be awarded this key industry award 13 years running". *** Indicative figures, based on research from Briary Energy, April 2022.

NEW HOMES QUALITY CODE

Housebuilders and developers who build new homes will be expected to register with the New Homes Quality Board (NHQB). As long as a housebuilder or developer has followed the correct registration process, including completing the necessary training, introducing a complaints procedure, and following other processes and procedures that are needed to meet the requirements of this New Homes Quality Code (the code), they will become a registered developer.

Registered developers agree to follow the code and the New Homes Ombudsman Service, including accepting the decisions of the New Homes Ombudsman in relation to dealings with customers. If a registered developer does not meet the required standards, or fails to accept and act in line with the decisions of the New Homes Ombudsman, they may have action taken against them, including being removed from the register of registered developers.

The code sets out the requirements that registered developers must meet. The code may be updated from time to time to reflect changes to industry best practice as well as the decisions of the New Homes Ombudsman Service.

All homes built by registered developers must meet building-safety and other regulations. All registered developers should aim to make sure there are no snags or defects in their properties before the keys are handed over to a customer. If there are any snags or defects, these should be put right within the agreed timescales.

WHAT THE CODE COVERS

For the purposes of this code, 'customer' means a person who is buying or intends to buy a new home which they will live in or give to another person. (If a new home is being bought in joint names, 'the customer' includes all the joint customers.) However, the New Homes Quality Board have also started work to consider other groups of customers and what they should be able to expect from a new home. This includes shared owners and people who are buying a new home to let to other people. Any changes the New Homes Quality Board make to the code to reflect the needs of other groups of customers will be developed through consultation, and they will continually assess and review the effectiveness of the code, and any new laws or regulations that apply. Other areas which are not covered by the code are claims for loss of property value or blight (where a property falls in value or becomes difficult to sell because of major public work in the area), personal injury or claims that are not covered by the scheme rules of the New Homes Ombudsman Service.



barratthomes.co.uk
0333 355 8466



Calls to 03 numbers are charged at the same rate as dialling an 01 or 02 number. If your fixed line or mobile service has inclusive minutes to 01/02 numbers, then calls to 03 are counted as part of this inclusive call volume. Non-BT customers and mobile phone users should contact their service providers for information about the cost of calls.