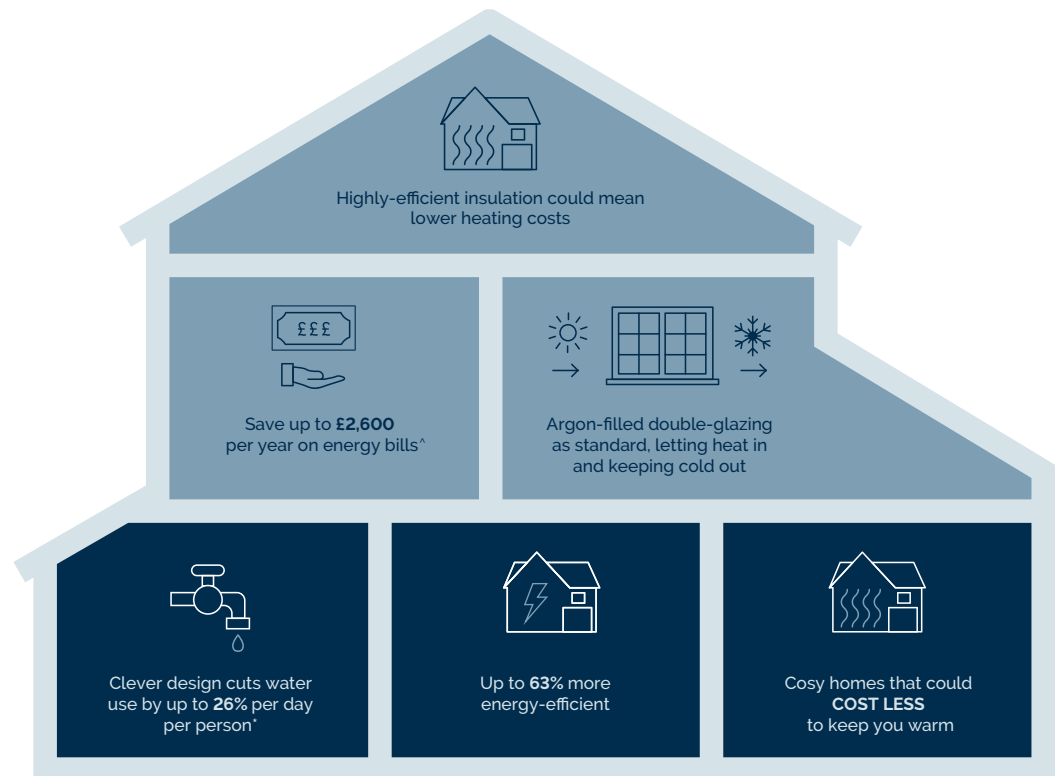


INGLEWHITE

MEADOWS

WE'RE HELPING TO MAKE YOUR HOME MORE ENERGY-EFFICIENT

We create low-carbon and efficient homes that are designed and built for better living and meet the challenges of the future.



[^]Indicative figures, based on HBF "Watt a Save" report published Feb 2023.

*Source: [Water UK](#)

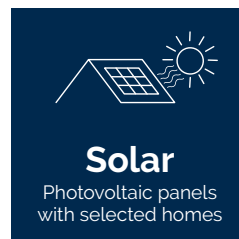
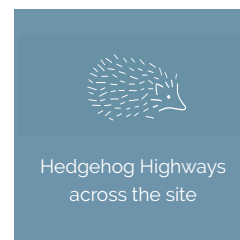
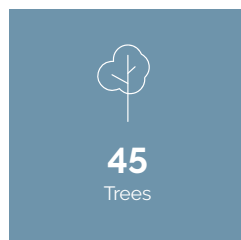
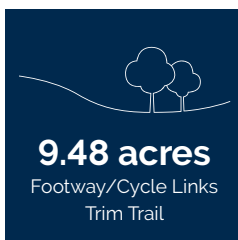
— CREATING A SUSTAINABLE — COMMUNITY

WHERE FAMILIES AND NATURE CAN THRIVE

At David Wilson Homes, we do more than simply craft beautiful homes and desirable developments.

We design and build great places that meet the highest standards and that promote sustainable healthy and happy living for our customers.

We know we must give our customers confidence that their homes are designed and built to meet the challenges of the future. We do this through creating places where people and nature can thrive.




INGLEWHITE MEADOW

Inglewhite Road, Longridge, Preston PR3 2NA

KEY

-  **The Wincham**
2 bedroom home
-  **The Archford**
3 bedroom home
-  **The Hadley**
3 bedroom home
-  **The Ingleby**
4 bedroom home
-  **The Hertford**
4 bedroom home
-  **The Meriden**
4 bedroom home
-  **The Bradgate**
4 bedroom home
-  **The Avondale**
4 bedroom home

Low Cost Homes

-  **The Lewes**
1 bedroom home
-  **The Lewington**
2 bedroom home
-  **The Wilford**
2 bedroom home
-  **The Archford**
3 bedroom home

 2021 Building Regulations

 Marketing Suite & Show Homes



Attenuation pond



Hedges



Trees



Small Bird Nest Box



Bat Box



Swift Nesting Box



Electric Vehicle
Charging Points



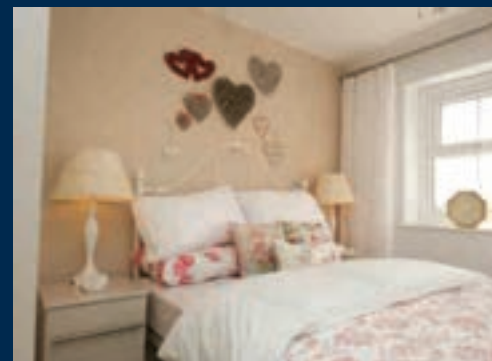
Positioning of our sustainability features are subject to change. Speak to a Sales Adviser for more information.

THE LEWES & THE LEWINGTON

END TERRACED HOME



Individual plots may vary, please speak to the Sales Adviser



The Lewes is a contemporary one bedroom home offering an open-plan lounge, kitchen and dining space on the first floor. The master bedroom below comes with fitted wardrobes while the shower room boasts a double shower. With an extra bedroom, The Lewington is a stylish home that makes perfect

use of the space on offer. The ground floor features an open-plan kitchen, lounge and dining room with French doors that lead to the rear garden and let plenty of natural light into the space. Upstairs boasts two comfortable double bedrooms and a family bathroom.



DAVID WILSON HOMES

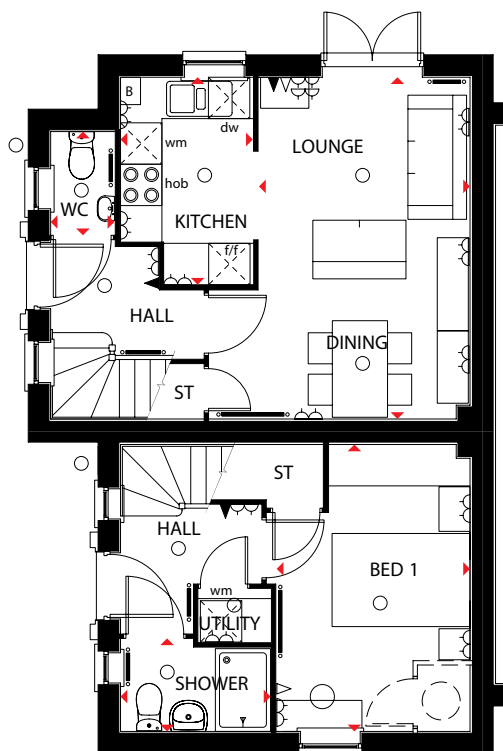
WHERE QUALITY LIVES

THE LEWES & THE LEWINGTON

END TERRACED HOME

Key

○ Light fitting	◀ Telephone outlet point	— Radiator	B Boiler	f/f Fridge/freezer space	dw Dishwasher space
⏏ Electric socket	◁ T.V. aerial socket	— Towel radiator	ST Store	wm Washing machine space	◀▶ Dimension location

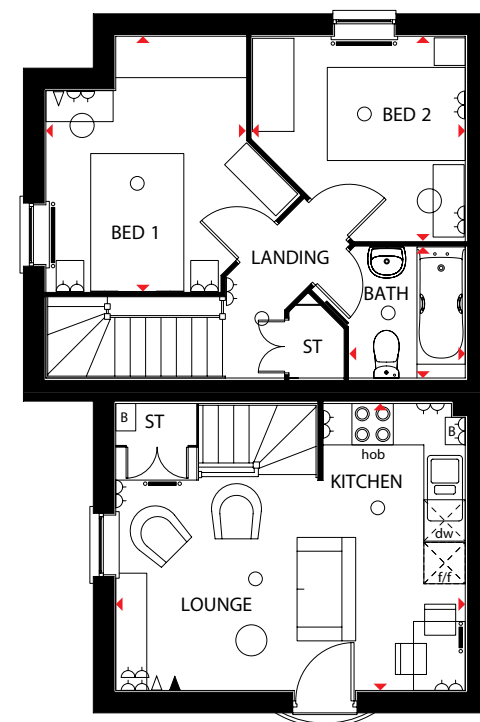


Ground Floor The Lewington

Lounge/Dining	4955 x 3060 mm	16'3" x 10'0"
Kitchen	1918 x 3008 mm	6'4" x 9'10"
WC	1490 x 924 mm	4'11" x 3'0"

The Lewes

Bed 1	3160 x 2803 mm	13'8" x 9'2"
Utility	1041 x 762 mm	3'5" x 2'6"
Shower room	1336 x 2175 mm	4'5" x 7'2"



First Floor The Lewington

Bed 1	3701 x 2898 mm	12'2" x 9'6"
Bed 2	2966 x 3093 mm	9'9" x 10'2"
Bath	1900 x 1680 mm	6'3" x 5'6"

The Lewes

Lounge/Kitchen	5067 x 4160 mm	16'7" x 13'8"
----------------	----------------	---------------

We are on the New Homes Quality Code register of registered developers. "We" refers to the Barratt Developments PLC group brands including Barratt London, Barratt Homes and David Wilson Homes. All images used are for illustrative purposes. These and the dimensions given are illustrative for this house type and individual properties may differ. Please check with your Sales Adviser in respect of individual properties. We give maximum dimensions within each room which includes areas of fixtures and fittings including fitted furniture. These dimensions should not be used for carpet or flooring sizes, appliance spaces or items of furniture. All images, photographs and dimensions are not intended to be relied upon for, nor to form part of, any contract unless specifically incorporated in writing into the contract.

N107-E-5, P237-E-5 DS10 / SP305706/0616

dwh.co.uk



DAVID WILSON HOMES

WHERE QUALITY LIVES

THE ARCHFORD

THREE BEDROOM HOME



Individual plots may vary, please speak to the Sales Adviser



The sash-style windows give the Archford end-terraced home a traditional look. Inside however, the stylish open-plan kitchen and dining area is designed very much for modern living with French doors opening out onto the rear garden and creating a bright, light-filled room. A lobby, separating the kitchen and the lounge,

has stairs leading to the first floor. Here, the master bedroom has its own en suite, with a separate bathroom for the rest of the family. A further double bedroom and a single bedroom complete this attractive home.



DAVID WILSON HOMES

WHERE QUALITY LIVES

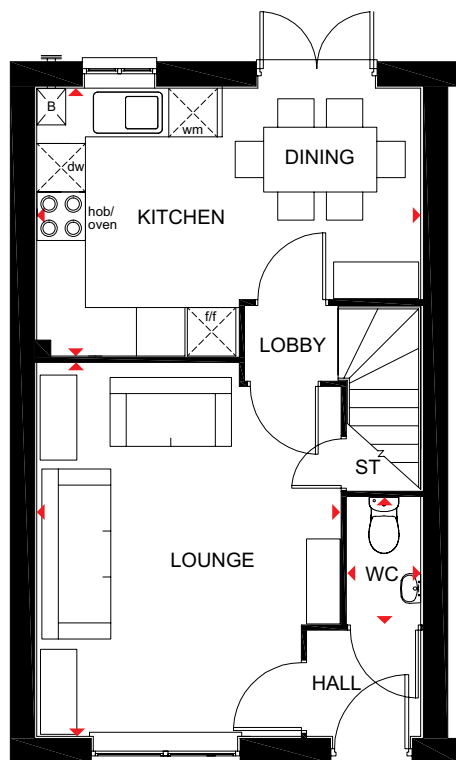
THE ARCHFORD

THREE BEDROOM HOME

Key

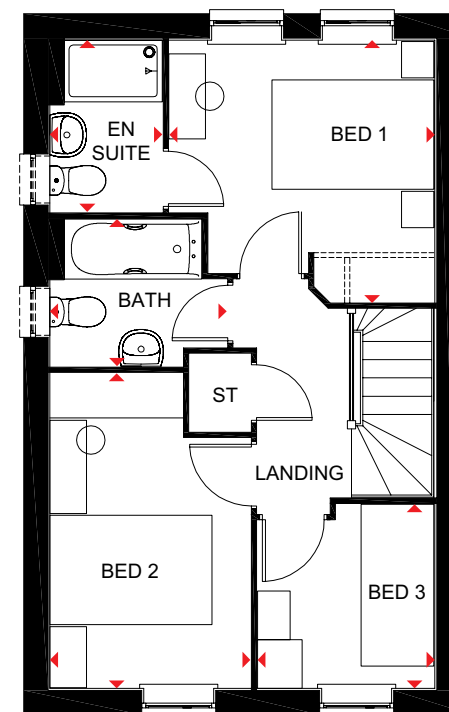
ST Store
B Boiler
f/f Fridge/freezer space

wm Washing machine space
dw Dishwasher space
◀▶ Dimension location



Ground Floor

Lounge	4604 x 3746 mm	15'1" x 12'3"
Kitchen/Dining	4750 x 3310 mm	15'7" x 10'10"
WC	1561 x 915 mm	5'1" x 3'0"



First Floor

Bed 1	3234 x 3276 mm	10'7" x 10'9"
En suite	1385 x 2119 mm	4'7" x 6'11"
Bed 2	2475 x 3891 mm	8'1" x 12'9"
Bed 3	2286 x 2186 mm	7'6" x 7'2"
Bath	1815 x 2181 mm	5'11" x 7'2"

We are on the New Homes Quality Code register of registered developers. "We" refers to the Barratt Developments PLC group brands including Barratt London, Barratt Homes and David Wilson Homes. All images used are for illustrative purposes. These and the dimensions given are illustrative for this house type and individual properties may differ. Please check with your Sales Adviser in respect of individual properties. We give maximum dimensions within each room which includes areas of fixtures and fittings including fitted furniture. These dimensions should not be used for carpet or flooring sizes, appliance spaces or items of furniture. All images, photographs and dimensions are not intended to be relied upon for, nor to form part of, any contract unless specifically incorporated in writing into the contract.

P382-E-7DS00/SP340070

dwh.co.uk



DAVID WILSON HOMES
WHERE QUALITY LIVES

THE HADLEY

THREE BEDROOM END-TERRACED HOME



Individual plots may vary, please speak to the Sales Adviser



The end-terraced Hadley is designed very much for modern living, with its open-plan kitchen, dining and family areas providing flexible space. French doors access the rear garden and make the whole room bright and airy, while a

separate utility room adds a practical note. The spacious dual-aspect lounge meanwhile provides the perfect place to relax. Upstairs are two double bedrooms – the large master with en suite – a single bedroom and the family bathroom.



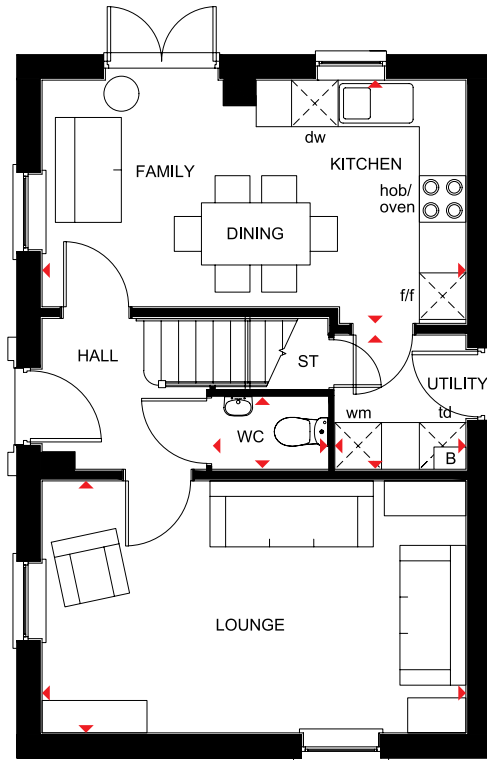
DAVID WILSON HOMES
WHERE QUALITY LIVES

THE HADLEY

THREE BEDROOM DETACHED HOME

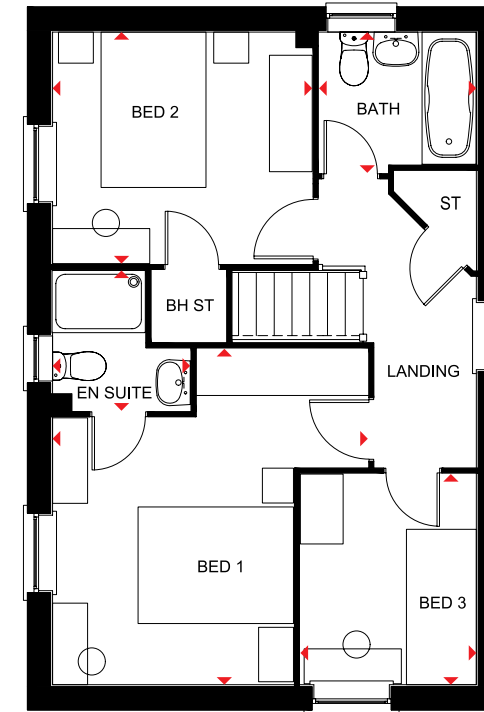
Key

B	Boiler	f/f	Fridge/freezer space	td	Tumble dryer space
ST	Store	wm	Washing machine space	◀▶	Dimension location
BH ST	Bulkhead Store	dw	Dishwasher space		



Ground Floor

Lounge	5455 x 3242 mm	17'11" x 10'8"
Kitchen/Family/ Dining	5455 x 3131 mm	17'11" x 10'3"
Utility	1727 x 1688 mm	5'8" x 5'6"
WC	1484 x 932 mm	4'10" x 3'1"



First Floor

Bedroom 1	4324 x 4058 mm	14'2" x 13'3"
En Suite	1806 x 1771 mm	5'11" x 5'9"
Bedroom 2	3341 x 2978 mm	11'3" x 9'9"
Bedroom 3	2713 x 2265 mm	8'11" x 7'5"
Bathroom	2025 x 1811 mm	6'8" x 6'0"

We are on the New Homes Quality Code register of registered developers. "We" refers to the Barratt Developments PLC group brands including Barratt London, Barratt Homes and David Wilson Homes. All images used are for illustrative purposes. These and the dimensions given are illustrative for this house type and individual properties may differ. Please check with your Sales Adviser in respect of individual properties. We give maximum dimensions within each room which includes areas of fixtures and fittings including fitted furniture. These dimensions should not be used for carpet or flooring sizes, appliance spaces or items of furniture. All images, photographs and dimensions are not intended to be relied upon for, nor to form part of, any contract unless specifically incorporated in writing into the contract.

P341--D7 DS02/SP394974

dwh.co.uk



DAVID WILSON HOMES
WHERE QUALITY LIVES

THE MERIDEN

FOUR BEDROOM DETACHED HOME



Individual plots may vary, please speak to the Sales Adviser

The Meriden is a bright place to call home with its attractive bay-fronted lounge and a light-filled glazed bay in the kitchen/dining area leading to the garden. A family space in the kitchen increases flexibility for living and entertaining, while a separate utility room adds practicality and an integral garage provides extra security. Upstairs are four double bedrooms, the generous master with en suite, and a family bathroom with shower.



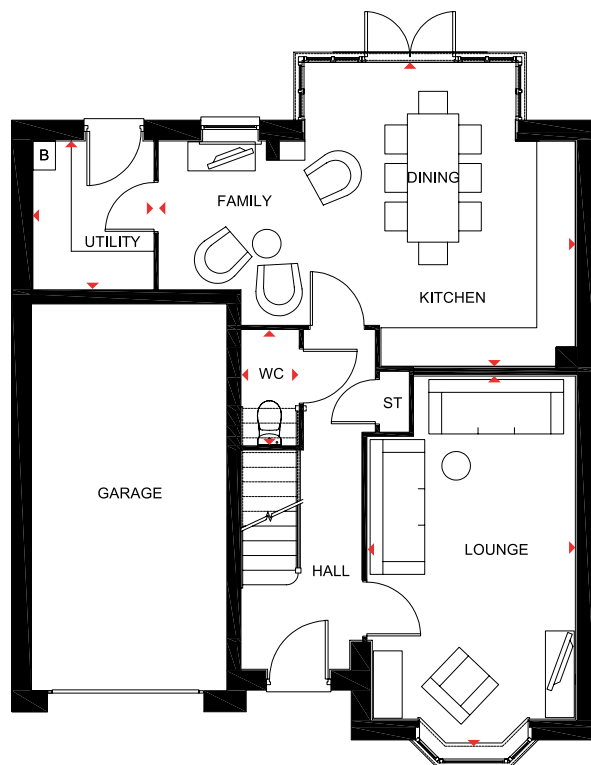
DAVID WILSON HOMES
WHERE QUALITY LIVES

THE MERIDEN

FOUR BEDROOM HOME

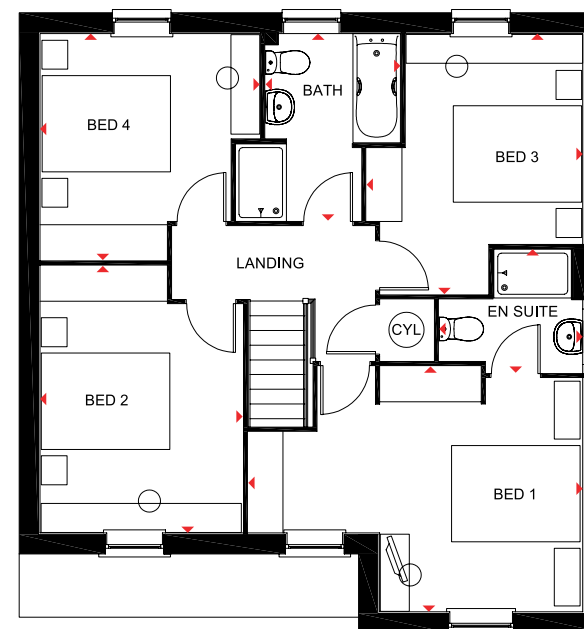
Key

B	Boiler	CYL	Cylinder
ST	Store	◀▶	Dimension location



Ground Floor

Lounge	5767 x 3235 mm	18'11" x 10'7"
Kitchen/Family/ Dining	6486 x 4735 mm	21'3" x 15'6"
Utility	2305 x 1877 mm	7'7" x 6'2"
WC	1786 x 882 mm	5'10" x 2'11"



First Floor

Bedroom 1	5208 x 3822 mm	17'1" x 12'6"
En Suite	2235 x 1923 mm	7'4" x 6'4"
Bedroom 2	4161 x 3155 mm	13'8" x 10'4"
Bedroom 3	4056 x 3365 mm	13'3" x 11'0"
Bedroom 4	3527 x 3423 mm	11'7" x 11'3"
Bathroom	2913 x 2100 mm	9'6" x 6'11"

We are on the New Homes Quality Code register of registered developers. "We" refers to the Barratt Developments PLC group brands including Barratt London, Barratt Homes and David Wilson Homes. All images used are for illustrative purposes. These and the dimensions given are illustrative for this house type and individual properties may differ. Please check with your Sales Adviser in respect of individual properties. We give maximum dimensions within each room which includes areas of fixtures and fittings including fitted furniture. These dimensions should not be used for carpet or flooring sizes, appliance spaces or items of furniture. All images, photographs and dimensions are not intended to be relied upon for, nor to form part of, any contract unless specifically incorporated in writing into the contract.

375034

dwh.co.uk



DAVID WILSON HOMES
WHERE QUALITY LIVES

THE BRADGATE

FOUR BEDROOM DETACHED HOME



Individual plots may vary, please speak to the Sales Adviser

A home to suit all the family, the Bradgate offers a combination of flexible communal areas and dedicated quiet space. An expansive open-plan kitchen with separate utility has dining and family areas leading to the garden – and extended living space in good weather – via a beautiful walk-in glazed bay with

French doors. A separate study and a lounge with attractive bay window provide room to work and relax in. Four double bedrooms upstairs, the spacious master with en suite, ensure everyone has space of their own. A family bathroom completes this truly superb family home.



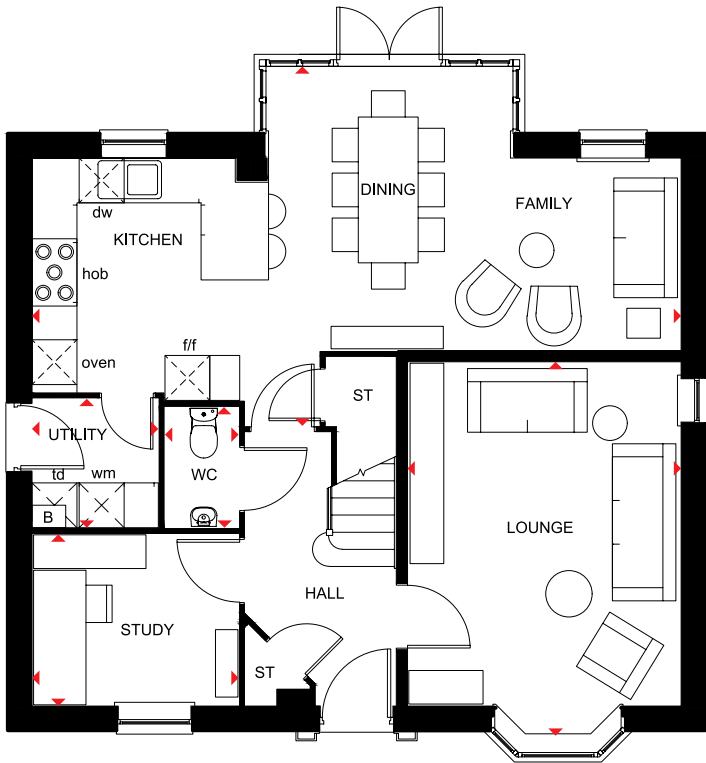
DAVID WILSON HOMES
WHERE QUALITY LIVES

THE BRADGATE

FOUR BEDROOM DETACHED HOME

Key

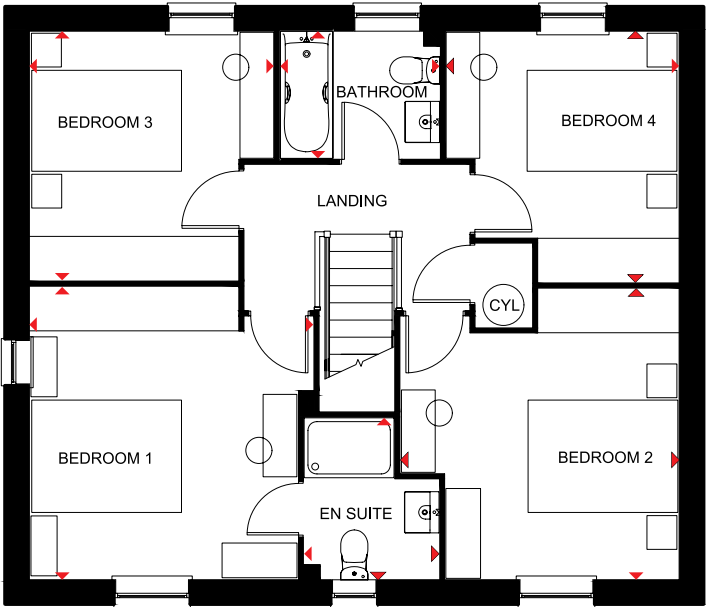
B	Boiler	f/f	Fridge/freezer space	td	Tumble dryer space
ST	Store	wm	Washing machine space	◀▶	Dimension location
CYL	Cylinder	dw	Dishwasher space		



Ground Floor

Lounge	4999 x 3658 mm	16'4" x 12'0"
Kitchen/Dining/Family	8677 x 4807 mm	28'5" x 15'9"
Study	2762 x 2295 mm	9'1" x 7'6"
Utility	1687 x 1724 mm	5'6" x 5'7"
WC	1614 x 986 mm	5'4" x 3'2"

*Window may be omitted on certain plots. Speak to a Sales Adviser for details on individual plots.



First Floor

Bedroom 1	3910 x 3791 mm	12'9" x 12'5"
En suite	2162 x 1799 mm	7'1" x 5'10"
Bedroom 2	3720 x 3885 mm	12'2" x 12'9"
Bedroom 3	3329 x 3263 mm	10'11" x 10'8"
Bedroom 4	3353 x 3112 mm	11'0" x 10'2"
Bathroom	2124 x 1700 mm	6'11" x 5'7"

*Window may be omitted on certain plots. Speak to a Sales Adviser for details on individual plots.

We are on the New Homes Quality Code register of registered developers. "We" refers to the Barratt Developments PLC group brands including Barratt London, Barratt Homes and David Wilson Homes. All images used are for illustrative purposes. These and the dimensions given are illustrative for this house type and individual properties may differ. Please check with your Sales Adviser in respect of individual properties. We give maximum dimensions within each room which includes areas of fixtures and fittings including fitted furniture. These dimensions should not be used for carpet or flooring sizes, appliance spaces or items of furniture. All images, photographs and dimensions are not intended to be relied upon for, nor to form part of, any contract unless specifically incorporated in writing into the contract.

H417-H7 DS03/SP416917



THE HERTFORD

FOUR BEDROOM DETACHED HOME



Individual plots may vary, please speak to the Sales Adviser

Designed over three floors, The Hertford is a spacious family home. A large open-plan dining area and kitchen – with separate utility – and a beautiful glazed walk-in bay with French doors leading to the garden, provide an abundance of flexible living space. Attractive bay windows in the dining area and the dual-

aspect lounge ensure this home offers a bright welcome. Two double bedrooms, the spacious master with en suite and dressing area, and the family bathroom are on the first floor. Upstairs are a further double bedroom, a single bedroom and a shower room.



DAVID WILSON HOMES

WHERE QUALITY LIVES

THE HERTFORD

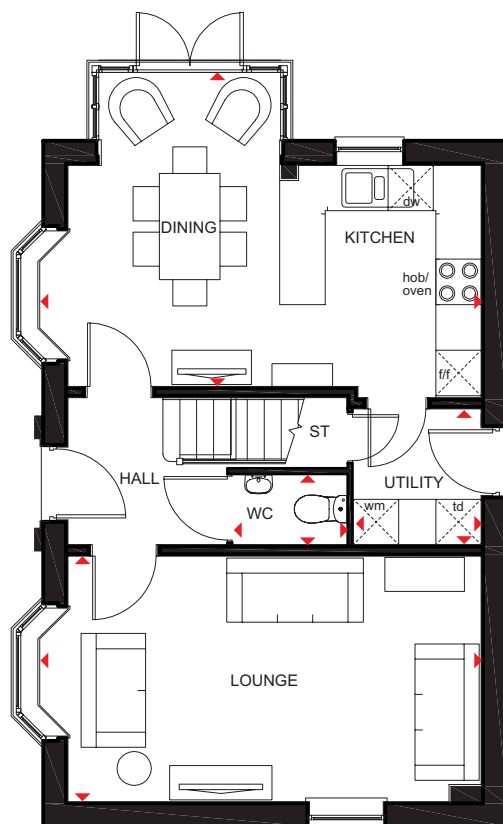
FOUR BEDROOM DETACHED HOME

Key

ST Store
CYL Cylinder
f/f Fridge/freezer space

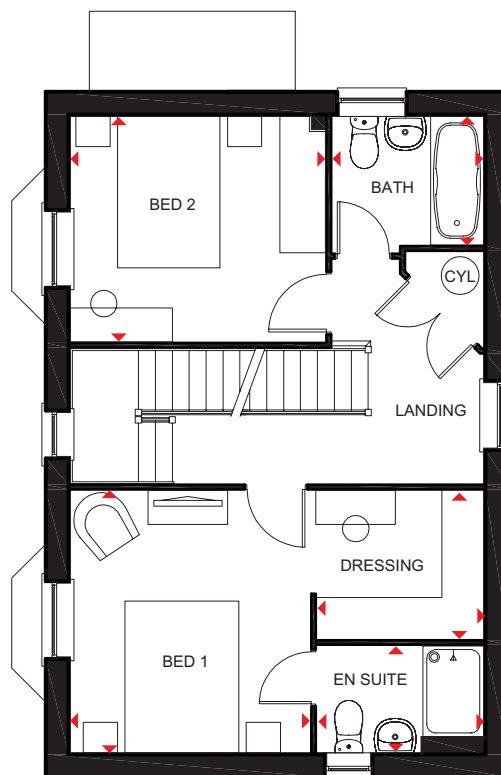
wm Washing machine space
dw Dishwasher space
td Tumble dryer space

◀ ▶ Dimension location



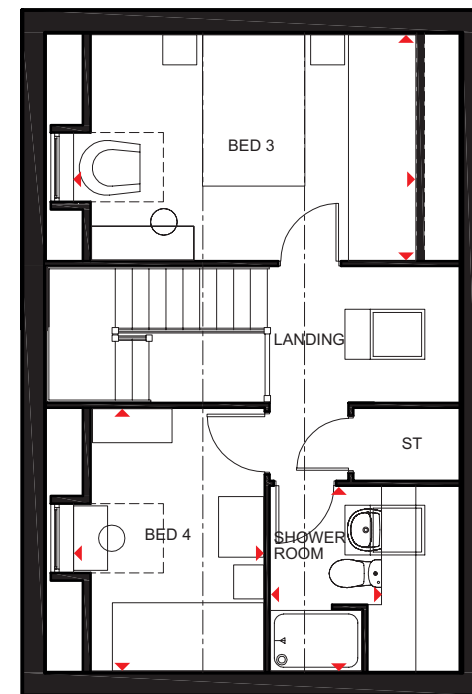
Ground Floor

Lounge	5852 x 3242 mm	19'2" x 10'7"
Kitchen/Dining	5852 x 4142 mm	19'2" x 13'7"
Utility	1688 x 1791 mm	5'6" x 5'10"
WC	1500 x 920 mm	4'11" x 3'0"



First Floor

Bed 1	3462 x 3166 mm	11'4" x 10'4"
En suite	2200 x 1410 mm	7'2" x 4'7"
Dressing	2200 x 1963 mm	7'2" x 6'5"
Bed 2	3366 x 2978 mm	11'0" x 9'9"
Bath	2000 x 1700 mm	6'6" x 5'6"



Second Floor

Bed 3	4540* x 2978 mm	14'10"* x 9'9"
Bed 4	3462 x 2537* mm	11'4" x 8'3"*
Shower room	2432 x 1464* mm	7'11" x 4'9"*

*Overall floor dimension includes lowered ceiling areas

We are on the New Homes Quality Code register of registered developers. "We" refers to the Barratt Developments PLC group brands including Barratt London, Barratt Homes and David Wilson Homes. All images used are for illustrative purposes. These and the dimensions given are illustrative for this house type and individual properties may differ. Please check with your Sales Adviser in respect of individual properties. We give maximum dimensions within each room which includes areas of fixtures and fittings including fitted furniture. These dimensions should not be used for carpet or flooring sizes, appliance spaces or items of furniture. All images, photographs and dimensions are not intended to be relied upon for, nor to form part of, any contract unless specifically incorporated in writing into the contract.

H470---7DS00 / SP 341684

dwh.co.uk



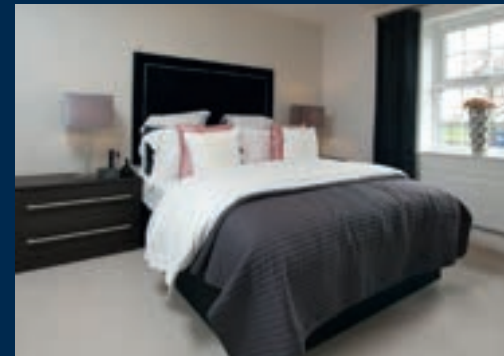
DAVID WILSON HOMES
WHERE QUALITY LIVES

THE INGLEBY

FOUR BEDROOM DETACHED HOME



Individual plots may vary, please speak to the Sales Adviser



The sash-style windows of this family home give it a delightfully traditional feel, while inside, the large open-plan kitchen with its dining and family areas is designed very much for modern living. Essential utility space is discreetly tucked away in a corner of the

kitchen and French doors give access to the rear garden. The separate lounge provides a comfortable haven where everyone can relax. Upstairs are two double bedrooms, the master with en suite, two single bedrooms and a family bathroom.



DAVID WILSON HOMES
WHERE QUALITY LIVES

THE INGLEBY

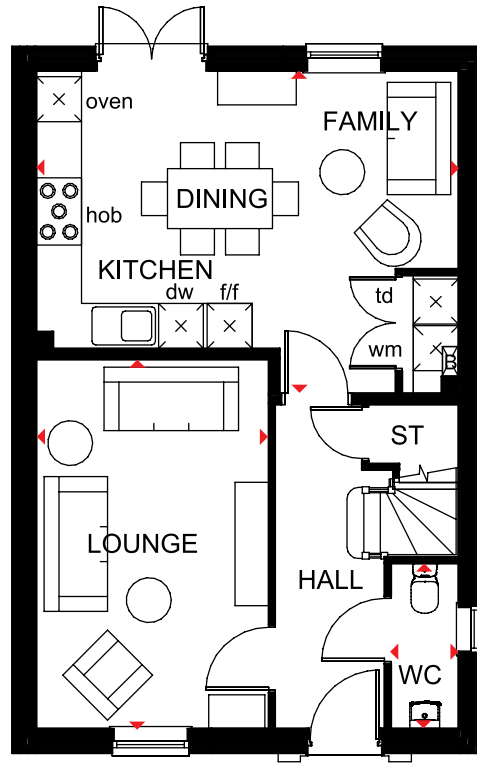
FOUR BEDROOM DETACHED HOME

Key

B Boiler
ST Store
f/f Fridge/freezer space

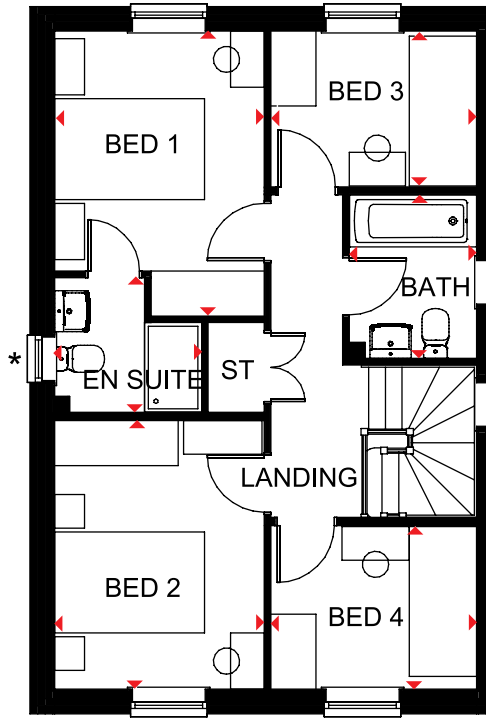
wm Washing machine space
dw Dishwasher space
td Tumble dryer space

◀▶ Dimension location



Ground Floor

Lounge	4930 x 3100 mm	16'2" x 10'2"
Kitchen/Family/Dining	5635 x 4305 mm	18'6" x 14'1"
WC	2206 x 900 mm	7'3" x 2'11"



First Floor

Bedroom 1	3802 x 2800 mm	12'6" x 9'2"
En suite	1962 x 1800 mm	6'5" x 5'11"
Bedroom 2	3587 x 2800 mm	11'9" x 9'2"
Bedroom 3	2747 x 2066 mm	9'0" x 6'9"
Bedroom 4	2747 x 2172 mm	9'0" x 7'1"
Bathroom	2179 x 1700 mm	7'2" x 5'7"

*Window may be omitted on certain plots. Speak to a Sales Adviser for details on individual plots.

We are on the New Homes Quality Code register of registered developers. "We" refers to the Barratt Developments PLC group brands including Barratt London, Barratt Homes and David Wilson Homes. All images used are for illustrative purposes. These and the dimensions given are illustrative for this house type and individual properties may differ. Please check with your Sales Adviser in respect of individual properties. We give maximum dimensions within each room which includes areas of fixtures and fittings including fitted furniture. These dimensions should not be used for carpet or flooring sizes, appliance spaces or items of furniture. All images, photographs and dimensions are not intended to be relied upon for, nor to form part of, any contract unless specifically incorporated in writing into the contract.

DWH 2017 H403--C7DS00/SP389013

dwh.co.uk



DAVID WILSON HOMES
WHERE QUALITY LIVES