



KINGS PARK

MACCLESFIELD

[dwh.co.uk](http://dwh.co.uk)

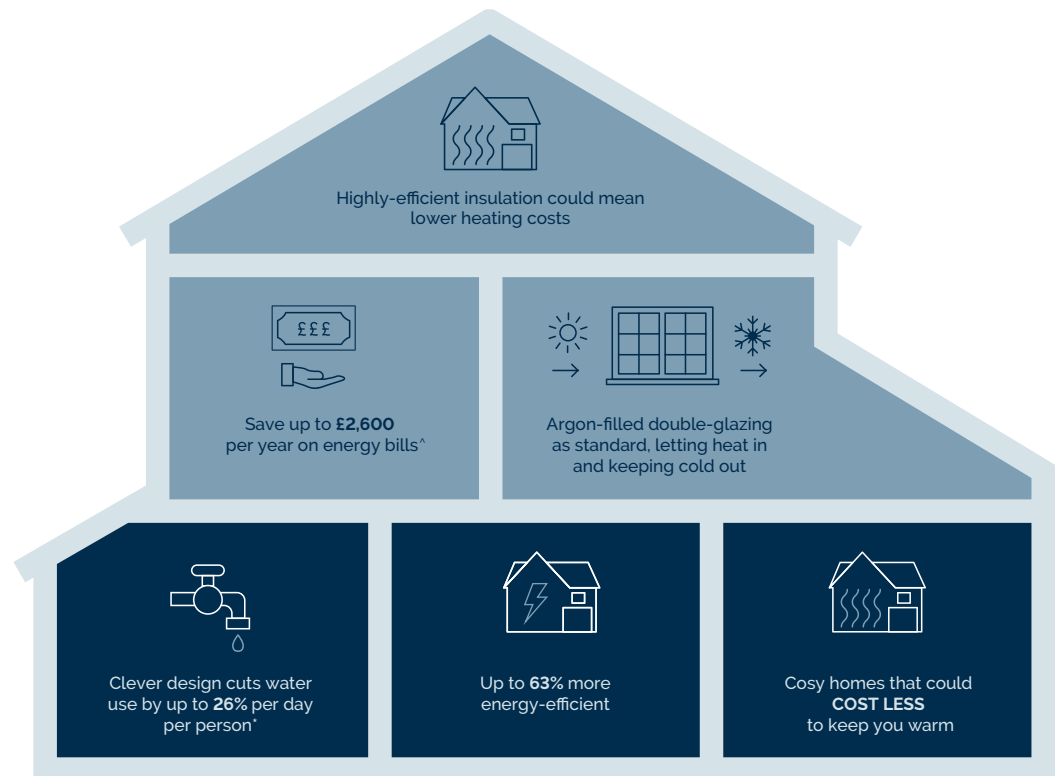


DAVID WILSON HOMES

WHERE QUALITY LIVES

# WE'RE HELPING TO MAKE YOUR HOME MORE ENERGY-EFFICIENT

We create low-carbon and efficient homes that are designed and built for better living and meet the challenges of the future.



<sup>^</sup>Indicative figures, based on HBF "Watt a Save" report published Feb 2023.

\*Source: [Water UK](#)

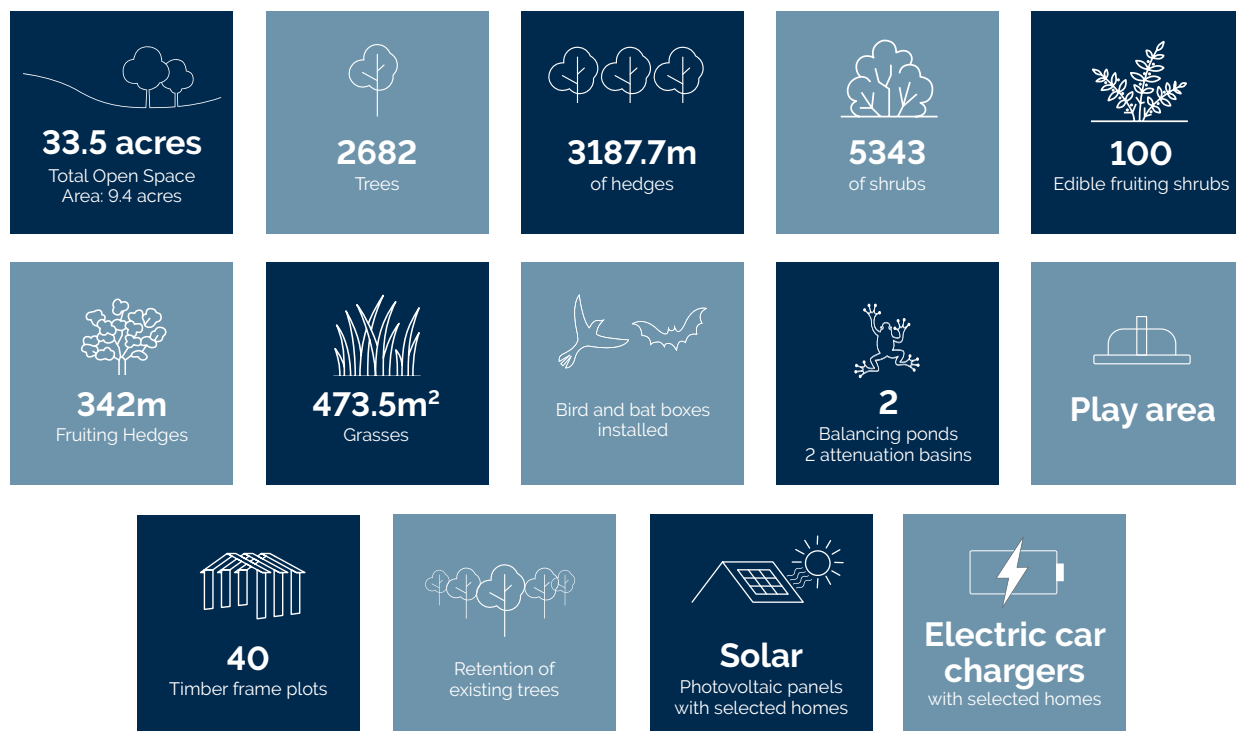
# CREATING A SUSTAINABLE COMMUNITY

WHERE FAMILIES AND NATURE CAN THRIVE

At David Wilson Homes, we do more than simply craft beautiful homes and desirable developments.

We design and build great places that meet the highest standards and that promote sustainable healthy and happy living for our customers.

We know we must give our customers confidence that their homes are designed and built to meet the challenges of the future. We do this through creating places where people and nature can thrive.





# KINGS PARK

MACCLESFIELD

Fence Avenue, Macclesfield, Cheshire SK10 1LT


## KEY

-  The Wincham  
2 bedroom home
-  The Archford  
3 bedroom home
-  The Hadley  
3 bedroom home
-  The Kennell  
3 bedroom home
-  The Greenwood  
3 bedroom home
-  The Fairway  
3 bedroom home
-  The Formby  
4 bedroom home
-  The Bayswater  
4 bedroom home
-  The Drummond  
4 bedroom home
-  The Herford  
4 bedroom home
-  The Hereford  
4 bedroom home
-  The Meriden  
4 bedroom home
-  The Bradgate  
4 bedroom home
-  The Avondale  
4 bedroom home
-  The Winstone  
4 bedroom home
-  The Manning  
5 bedroom home
-  The Henley  
5 bedroom home
- Town Homes**
  -  Apartments
  -  Shared Ownership Homes
- LOW COST HOMES**
  -  The Dunt  
2 bedroom home
  -  The Belstead & Easthorpe  
2 bedroom homes
  -  The Archford  
3 bedroom home
  -  The Atkinson  
3 bedroom home
  -  The Heather  
3 bedroom home
- LEAP** – Locally Equipped Area for Play
-  2021 Building Regulations
-  Marketing Suite & Show Homes



Small Bird Nest Box 

Bat Box 

Electric Vehicle  
Charging Points 

Attenuation pond 

Hedges 

Trees 

Positioning of our sustainability features are subject to change. Speak to a Sales Advisor for more information.

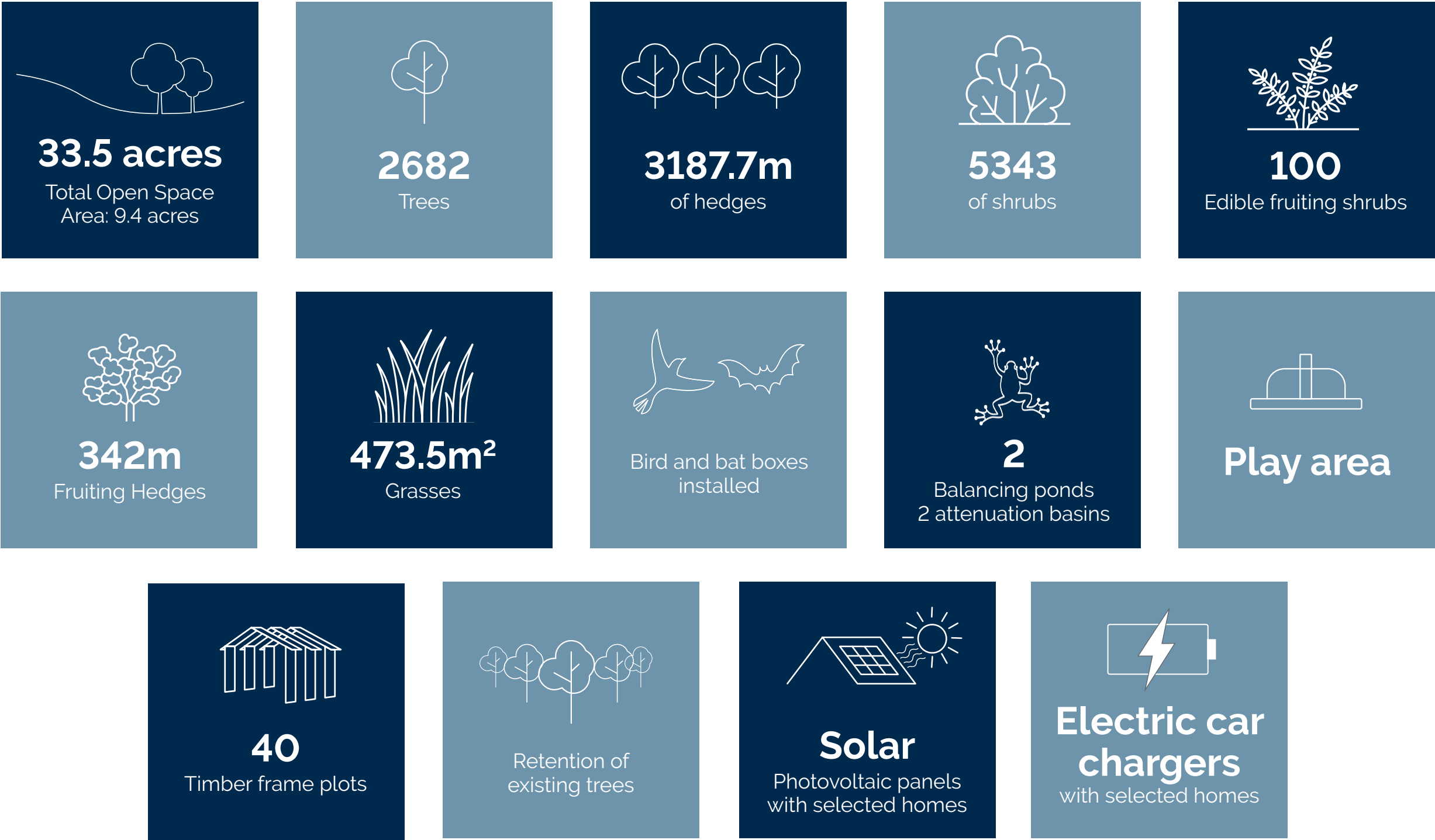


# CREATING A SUSTAINABLE COMMUNITY

WHERE FAMILIES AND NATURE CAN THRIVE AT KINGS PARK



Throughout the planning process before starting build, we consider where we can introduce nature and where we can strengthen it. At David Wilson Homes, we do more than simply craft beautiful homes and desirable developments. We design and build great places that meet the highest standards, and that promote sustainable, healthy and happy living for our customers. We know we must give our customers confidence that their homes are designed and built to meet the challenges of the future. We do this through creating places where people and nature can thrive.



dwh.co.uk

DAVID WILSON HOMES  
WHERE QUALITY LIVES

"We", "our", "us" refers to the Barratt Developments PLC Group brands including Barratt Homes, David Wilson Homes and Barratt London. Some of the features shown may not be available with every David Wilson home or on every David Wilson development. Please speak to a Sales Adviser for details of the features available on the home and development you are interested in. To find out more about the energy-efficiency and sustainability and sustainability of our homes visit our website. All images used are for illustrative purposes only. Information correct at time of publishing.



# THE BAYSWATER

FOUR BEDROOM DETACHED HOME



Individual plots may vary, please speak to the Sales Adviser



The Bayswater is beautifully designed over three floors with an intelligent use of space applied. The expansive open-plan kitchen with dining and family areas has French doors leading to the rear garden. The lounge, with an attractive

bay window, is perfect for all the family to relax in. On the first floor are two double bedrooms, a twin bedroom and the family bathroom. The spacious master bedroom, with en suite and dressing area, takes up the entire second floor.



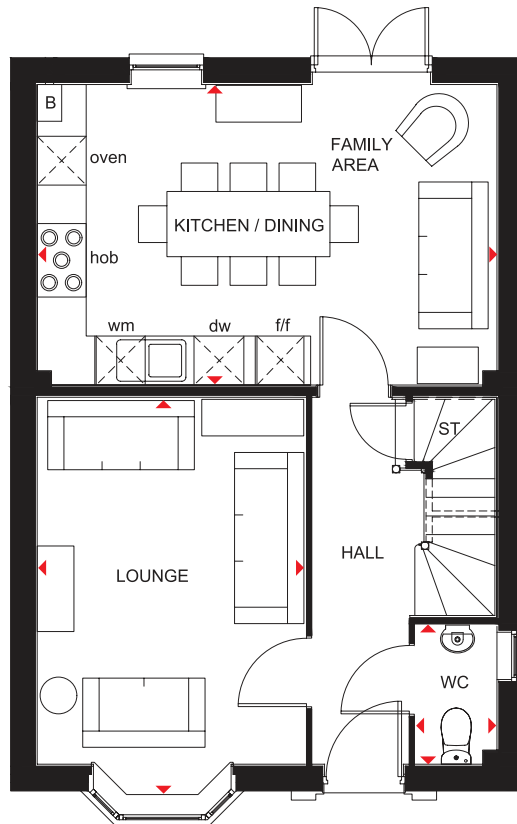
DAVID WILSON HOMES  
WHERE QUALITY LIVES

# THE BAYSWATER

FOUR BEDROOM DETACHED HOME

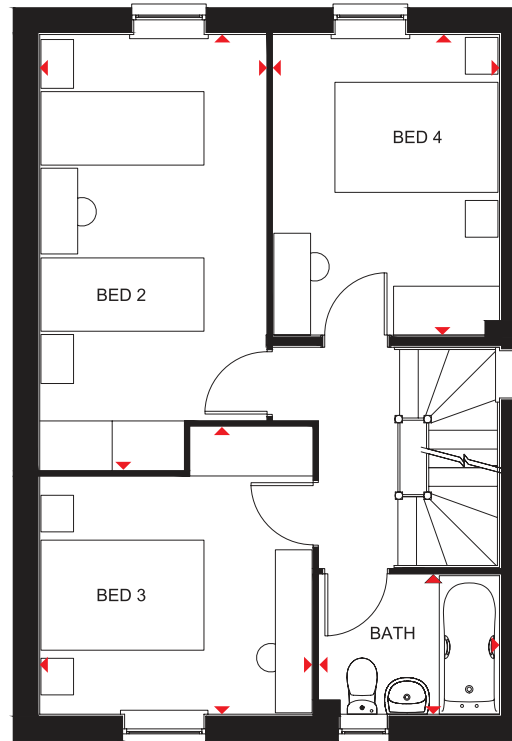
## Key

B	Boiler	wm	Washing machine space	◀▶	Dimension location
ST	Store	dw	Dishwasher space		
f/f	Fridge/freezer space	RL	Roof light		



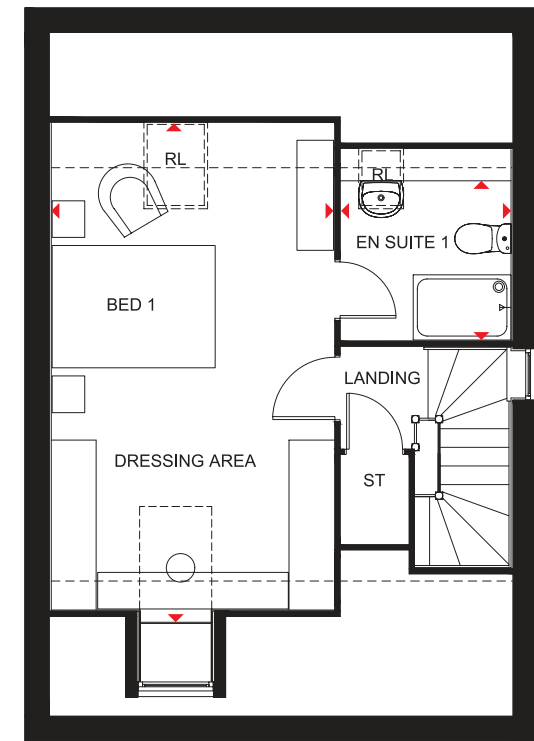
### Ground Floor

Lounge	4900 x 3290 mm	16'1" x 10'10"
Kitchen/Family/Dining	5640 x 3687 mm	18'6" x 12'1"
WC	1712 x 1000 mm	5'7" x 3'3"



### First Floor

Bedroom 2	2773 x 5341 mm	9'1" x 17'6"
Bedroom 3	3341 x 3525 mm	11'0" x 11'7"
Bedroom 4	2776 x 3688 mm	9'1" x 12'1"
Bathroom	2210 x 1712 mm	7'3" x 5'7"



### Second Floor

Bedroom 1/Dressing Area	6120* x 3463 mm	20'1" x 11'4"
En suite	2085 x 1954* mm	6'10" x 6'5"

\*Overall floor dimension includes lowered ceiling areas

We are on the New Homes Quality Code register of registered developers. "We" refers to the Barratt Developments PLC group brands including Barratt London, Barratt Homes and David Wilson Homes. All images used are for illustrative purposes. These and the dimensions given are illustrative for this house type and individual properties may differ. Please check with your Sales Adviser in respect of individual properties. We give maximum dimensions within each room which includes areas of fixtures and fittings including fitted furniture. These dimensions should not be used for carpet or flooring sizes, appliance spaces or items of furniture. All images, photographs and dimensions are not intended to be relied upon for, nor to form part of, any contract unless specifically incorporated in writing into the contract.

H406---7 DS02/SP394962

dwh.co.uk



DAVID WILSON HOMES  
WHERE QUALITY LIVES

# THE GREENWOOD

THREE BEDROOM END-TERRACED HOME



Individual plots may vary, please speak to the Sales Adviser



The Greenwood is a flexible home designed over three floors. The ground floor has a kitchen that flows into dining and family areas, with a large walk-in glazed bay leading to the garden – and perfect extended living space in good weather. A study and

a utility cupboard are also on the ground floor, while a spacious lounge and master bedroom with en suite are on the first floor. Upstairs again, and a further two double bedrooms and the family bathroom are on the top floor, making this a great family home.



DAVID WILSON HOMES

WHERE QUALITY LIVES

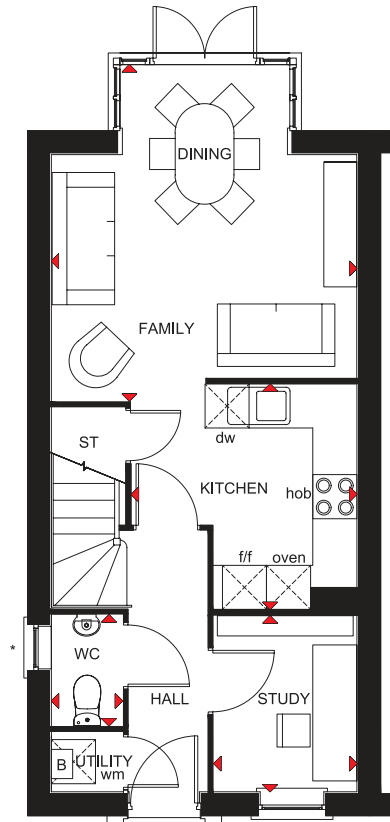


# THE GREENWOOD

THREE BEDROOM END-TERRACED HOME

## Key

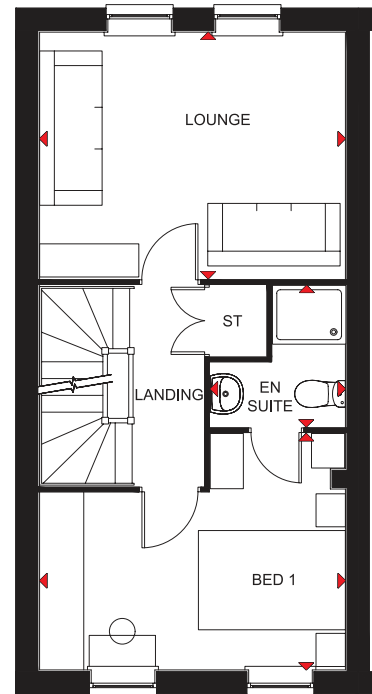
B	Boiler	wm	Washing machine space	◀ ▶	Dimension location
ST	Store	dw	Dishwasher space		
f/f	Fridge/freezer space	RL	Roof light		



### Ground Floor

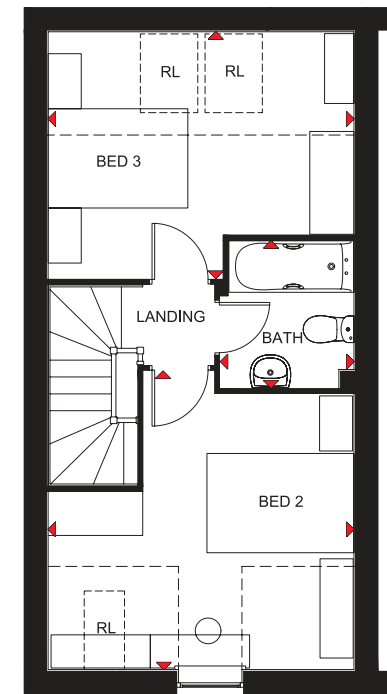
Family/Dining	4160 x 4582 mm	13'8" x 15'0"
Kitchen	3070 x 3070 mm	10'0" x 10'0"
Study	2396 x 1959 mm	7'10" x 6'5"
WC	1512 x 968 mm	4'11" x 3'2"

\*Window may be omitted on certain plots.  
Speak to a Sales Adviser for details on individual plots.



### First Floor

Lounge	4160 x 3356 mm	13'8" x 11'0"
Bedroom 1	4160 x 3217 mm	13'8" x 10'7"
En suite	1838 x 1927 mm	6'0" x 6'4"



### Second Floor

Bedroom 2	4160 x 4062 <sup>†</sup> mm	13'8" x 13'3" <sup>†</sup>
Bedroom 3	4160 x 3356 <sup>†</sup> mm	13'8" x 11'0" <sup>†</sup>
Bathroom	2000 x 1826 mm	6'7" x 6'0"

<sup>†</sup>Overall floor dimension includes lowered ceiling areas

We are on the New Homes Quality Code register of registered developers. "We" refers to the Bannat Developments PLC group brands including Bannat London, Bannat Homes and David Wilson Homes. All images used are for illustrative purposes. These and the dimensions given are illustrative for this house type and individual properties may differ. Please check with your Sales Adviser in respect of individual properties. We give maximum dimensions within each room which includes areas of fixtures and fittings including fitted furniture. These dimensions should not be used for carpet or flooring sizes, appliance spaces or items of furniture. All images, photographs and dimensions are not intended to be relied upon for, nor to form part of, any contract unless specifically incorporated in writing into the contract.

T322-E-7DS02/SP395367

dwh.co.uk



DAVID WILSON HOMES  
WHERE QUALITY LIVES

# THE HERTFORD

FOUR BEDROOM DETACHED HOME



Individual plots may vary, please speak to the Sales Adviser

Designed over three floors, The Hertford is a spacious family home. A large open-plan dining area and kitchen – with separate utility – and a beautiful glazed walk-in bay with French doors leading to the garden, provide an abundance of flexible living space. Attractive bay windows in the dining area and the dual-

aspect lounge ensure this home offers a bright welcome. Two double bedrooms, the spacious master with en suite and dressing area, and the family bathroom are on the first floor. Upstairs are a further double bedroom, a single bedroom and a shower room.



DAVID WILSON HOMES  
WHERE QUALITY LIVES



# THE HERTFORD

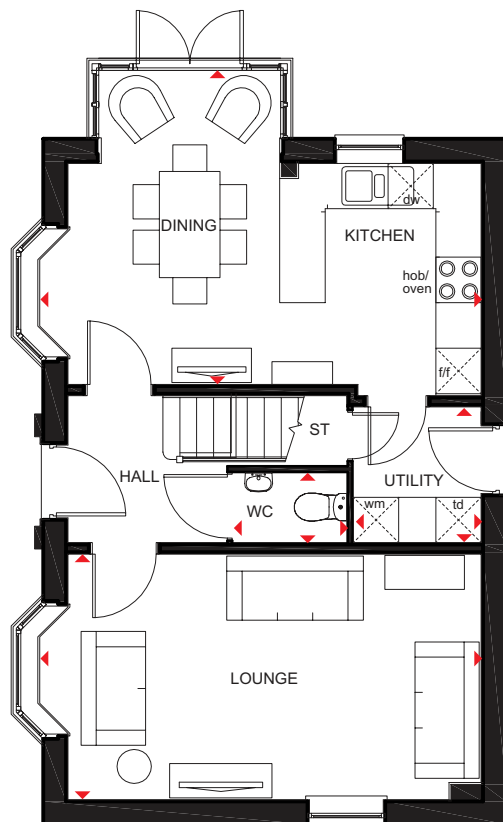
FOUR BEDROOM DETACHED HOME

## Key

ST Store  
CYL Cylinder  
f/f Fridge/freezer space

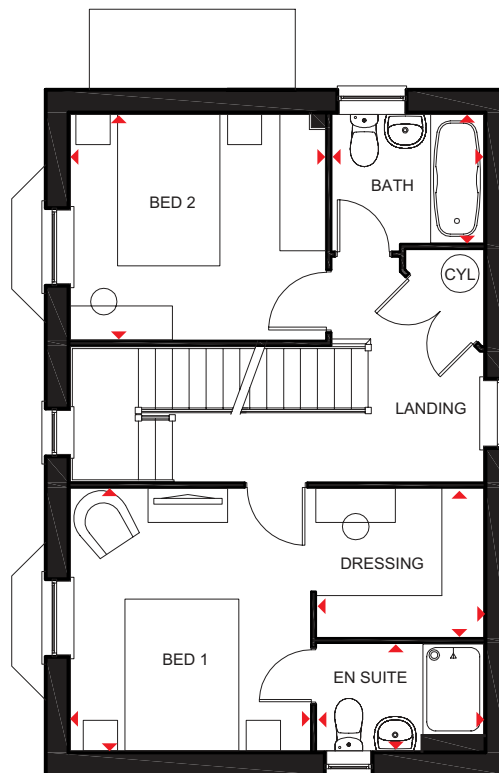
wm Washing machine space  
dw Dishwasher space  
td Tumble dryer space

◀ ▶ Dimension location



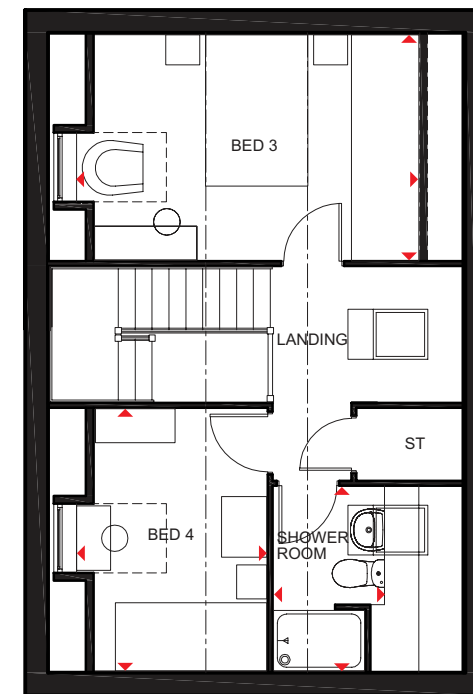
### Ground Floor

Lounge	5852 x 3242 mm	19'2" x 10'7"
Kitchen/Dining	5852 x 4142 mm	19'2" x 13'7"
Utility	1688 x 1791 mm	5'6" x 5'10"
WC	1500 x 920 mm	4'11" x 3'0"



### First Floor

Bed 1	3462 x 3166 mm	11'4" x 10'4"
En suite	2200 x 1410 mm	7'2" x 4'7"
Dressing	2200 x 1963 mm	7'2" x 6'5"
Bed 2	3366 x 2978 mm	11'0" x 9'9"
Bath	2000 x 1700 mm	6'6" x 5'6"



### Second Floor

Bed 3	4540* x 2978 mm	14'10"* x 9'9"
Bed 4	3462 x 2537* mm	11'4" x 8'3"*
Shower room	2432 x 1464* mm	7'11" x 4'9"*

\*Overall floor dimension includes lowered ceiling areas

We are on the New Homes Quality Code register of registered developers. "We" refers to the Barratt Developments PLC group brands including Barratt London, Barratt Homes and David Wilson Homes. All images used are for illustrative purposes. These and the dimensions given are illustrative for this house type and individual properties may differ. Please check with your Sales Adviser in respect of individual properties. We give maximum dimensions within each room which includes areas of fixtures and fittings including fitted furniture. These dimensions should not be used for carpet or flooring sizes, appliance spaces or items of furniture. All images, photographs and dimensions are not intended to be relied upon for, nor to form part of, any contract unless specifically incorporated in writing into the contract.

H470---7DS00 / SP 341684

dwh.co.uk



DAVID WILSON HOMES  
WHERE QUALITY LIVES

# THE KENNETT

THREE BEDROOM TERRACED HOME



Individual plots may vary, please speak to the Sales Adviser

Intelligently designed over three floors, The Kennett is a good-sized end-terraced family home, ideal for flexible modern living. The open-plan kitchen on the ground floor incorporates a dining area opening out onto the rear garden. A lobby

separating the kitchen from the spacious bay-fronted lounge leads upstairs. Here are two double bedrooms, the family bathroom and access to the second floor, which is entirely occupied by a spacious master bedroom with en suite.



DAVID WILSON HOMES  
WHERE QUALITY LIVES

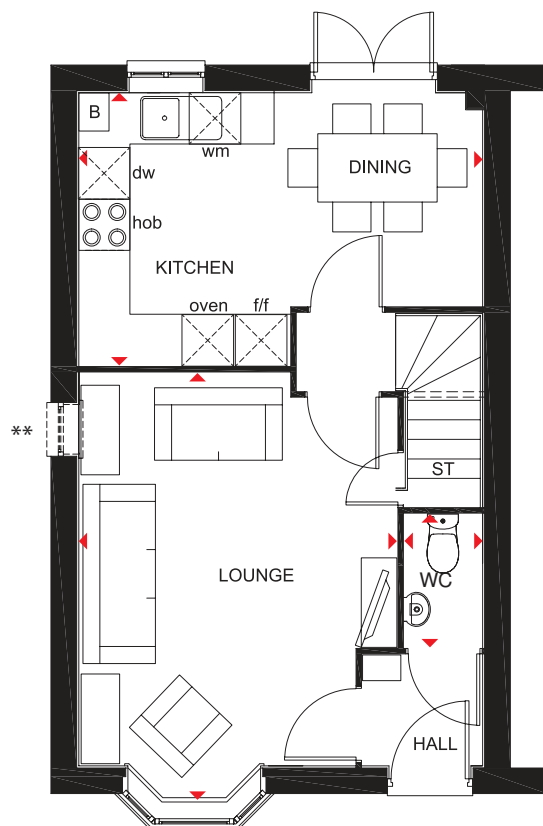


# THE KENNETT

THREE BEDROOM TERRACED HOME

## Key

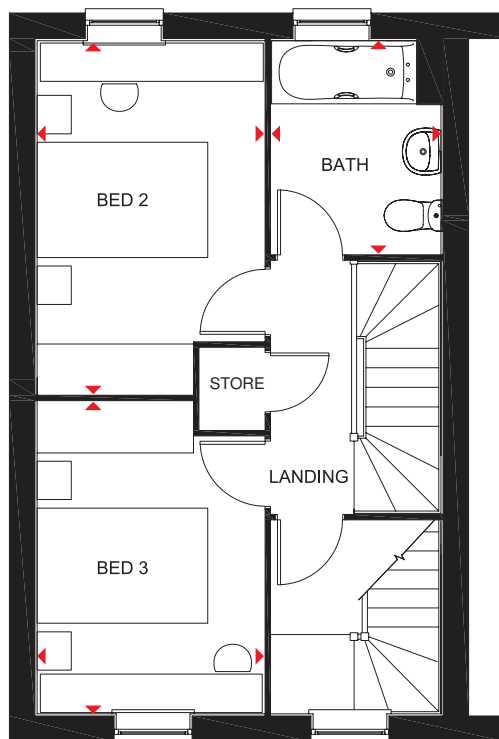
B	Boiler	f/f	Fridge/freezer space	◀▶	Dimension location
ST	Store	wm	Washing machine space		
CYL	Cylinder	dw	Dishwasher space		



### Ground Floor

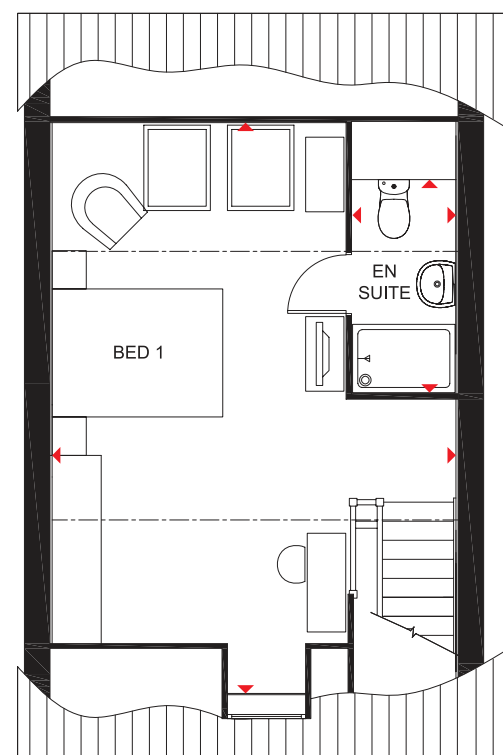
Lounge	5001 x 3729 mm	16'4" x 12'2"
Kitchen/Dining	4733 x 3197 mm	15'6" x 10'5"
WC	1561 x 915 mm	5'1" x 3'0"

\*\*Window may be omitted on certain plots.  
Speak to a Sales Adviser for details on individual plots.



### First Floor

Bed 2	4116 x 2659 mm	13'6" x 8'8"
Bed 3	3658 x 2659 mm	12'0" x 8'8"
Bath	2498 x 1985 mm	8'2" x 6'6"



### Second Floor

Bed 1	6690 x 4733* mm	21'11" x 15'6"*
En suite	1210 x 2497* mm	3'11" x 8'2"*

\*Overall floor dimension includes lowered ceiling areas

We are on the New Homes Quality Code register of registered developers. "We" refers to the Barratt Developments PLC group brands including Barratt London, Barratt Homes and David Wilson Homes. All images used are for illustrative purposes. These and the dimensions given are illustrative for this house type and individual properties may differ. Please check with your Sales Adviser in respect of individual properties. We give maximum dimensions within each room which includes areas of fixtures and fittings including fitted furniture. These dimensions should not be used for carpet or flooring sizes, appliance spaces or items of furniture. All images, photographs and dimensions are not intended to be relied upon for, nor to form part of, any contract unless specifically incorporated in writing into the contract.

TB10-E7DS01 / SP342562

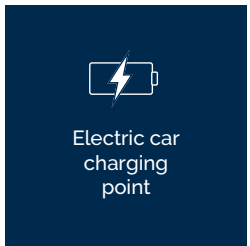


# THE MERIDEN

## FOUR BEDROOM HOME



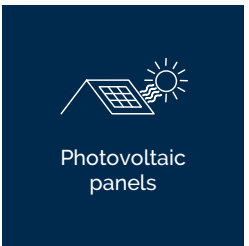
Highly-efficient insulation



Electric car charging point



Decentralised mechanical extract ventilation (d-MEV)



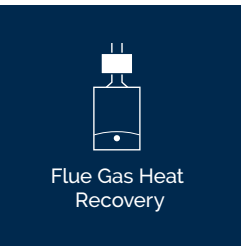
Photovoltaic panels



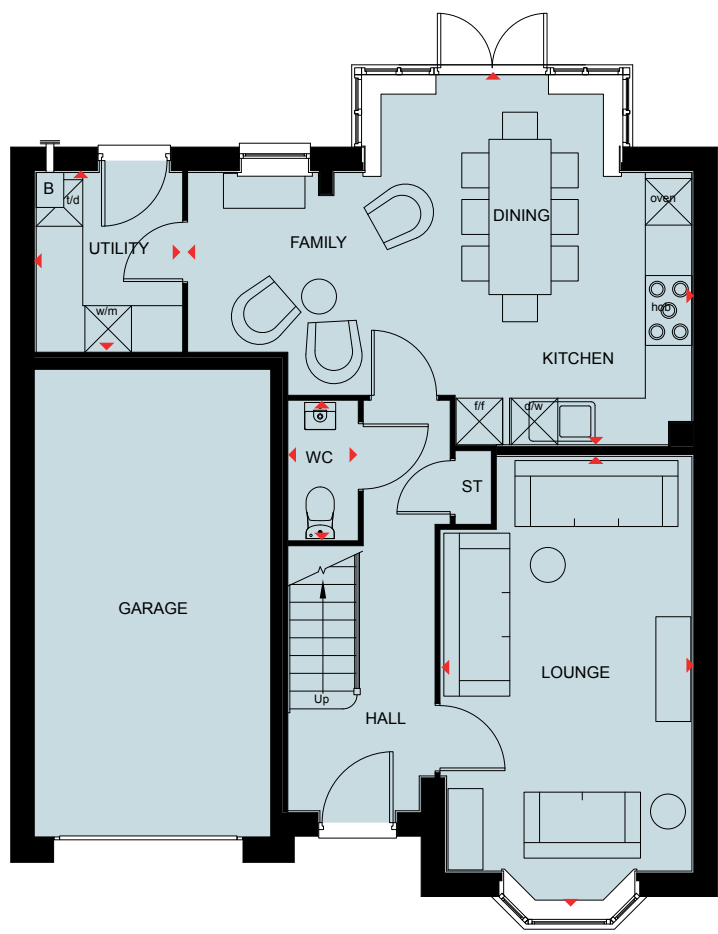
Waste Water Heat Recovery Systems



Argon-filled double-glazing

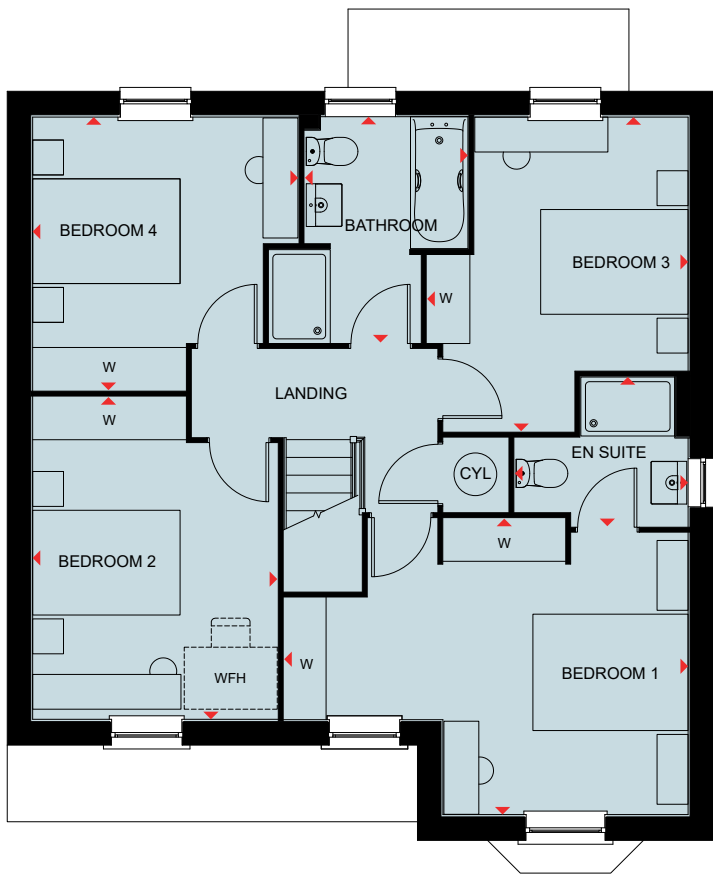


Flue Gas Heat Recovery



### Ground Floor

Lounge	5762 x 3235 mm	18'11" x 10'7"
Kitchen/Family/Dining	6486 x 4768 mm	21'3" x 15'7"
Utility	2305 x 1877 mm	7'7" x 6'2"
WC	1786 x 882 mm	5'10" x 2'11"



### First Floor

Bedroom 1	5208 x 3817 mm	17'1" x 12'6"
En suite	2235 x 1923 mm	7'4" x 6'4"
Bedroom 2	4156 x 3155 mm	13'8" x 10'4"
Bedroom 3	4049 x 3365 mm	13'3" x 11'0"
Bedroom 4	3520 x 3423 mm	11'7" x 11'3"
Bathroom	2913 x 2100 mm	9'6" x 6'11"

### Key

B	Boiler	wm	Washing machine space	f/f	Fridge/freezer space	WFH	Working from home space	◀▶	Dimension location
ST	Store	dw	Dishwasher space	td	Tumble dryer space	w	Wardrobe space		



DAVID WILSON HOMES

We are on the New Homes Quality Code register of registered developers. "We" refers to the Barratt Developments PLC group brands including Barratt London, Barratt Homes and David Wilson Homes. All images used are for illustrative purposes. The images and the dimensions given are illustrative for this house type and individual properties may differ. Please check with your Sales Adviser in respect of individual properties. We give maximum dimensions within each room which includes areas of fixtures and fittings including fitted furniture. These dimensions should not be used for carpet or flooring sizes, appliance spaces or items of furniture. All images, photographs, dimensions and energy efficiency features depicted are not intended to be relied upon for, nor to form part of, any contract unless specifically incorporated in writing into the contract.

BDW003839/OCT23

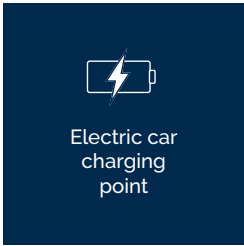


# THE WINSTONE

## FOUR BEDROOM DETACHED HOME



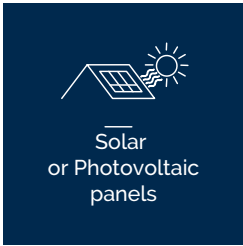
Highly-efficient insulation



Electric car charging point



Decentralised mechanical extract ventilation (d-MEV)



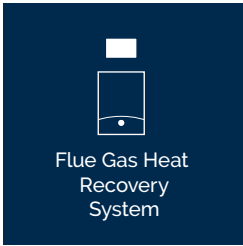
Solar or Photovoltaic panels



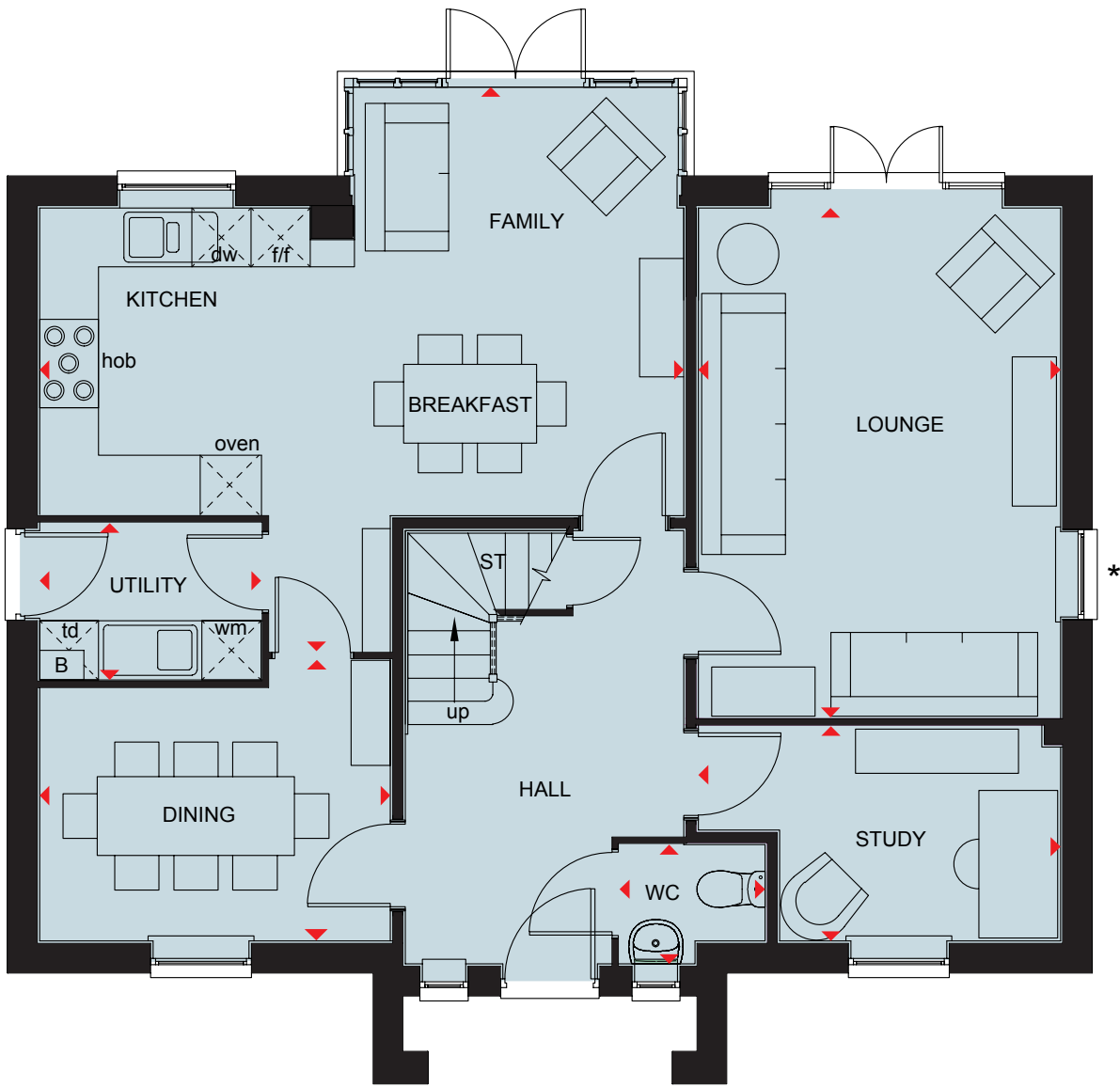
Waste Water Heat Recovery Systems



Argon-filled double-glazing

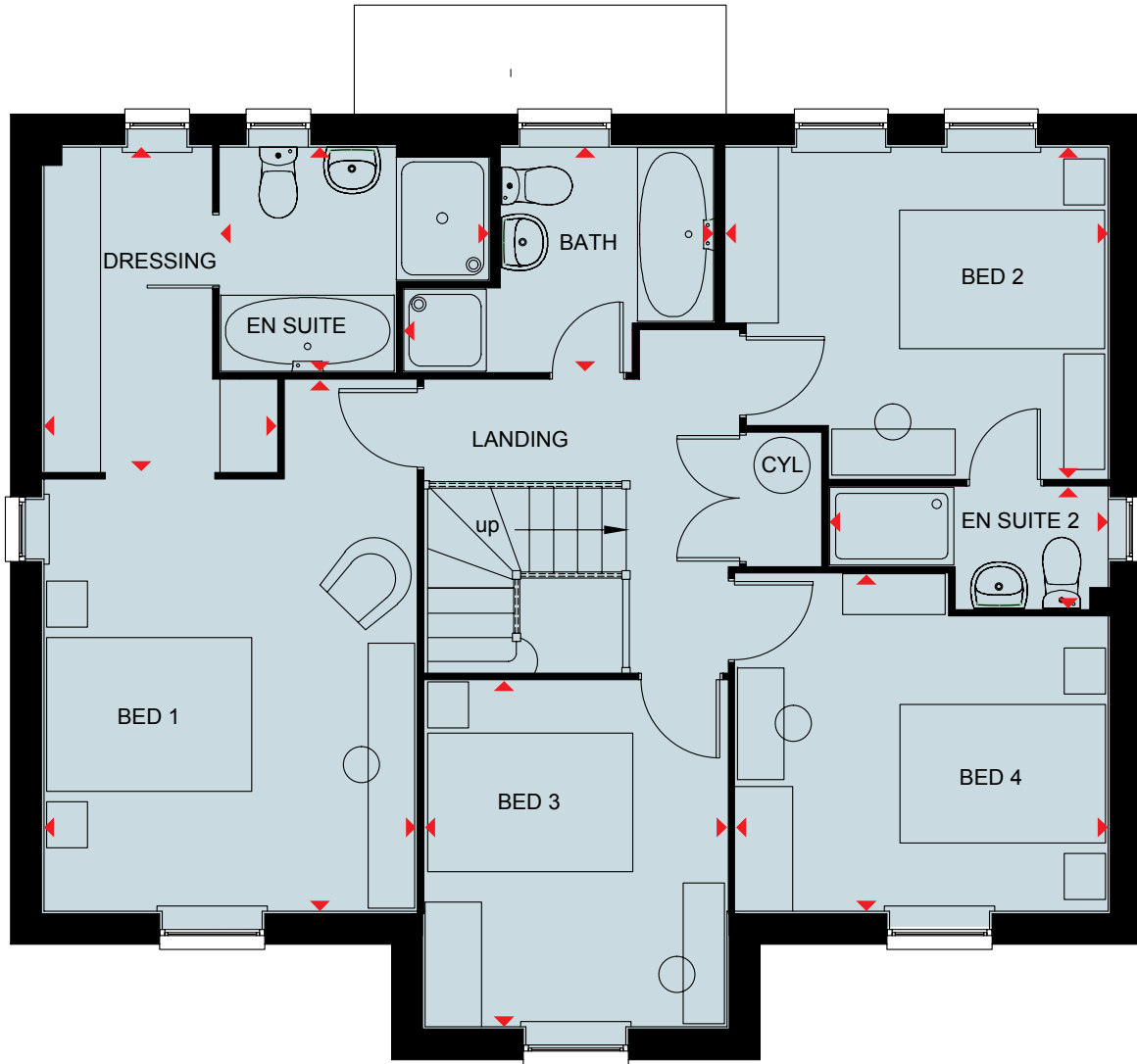


Flue Gas Heat Recovery System



### Ground Floor

Lounge	5171 x 3675 mm	16'11" x 12'0"
Kitchen/Family/Breakfast	6540 x 5725 mm	21'5" x 18'9"
Dining	3563 x 2851 mm	11'8" x 9'4"
Study	3675 x 2180 mm	12'0" x 7'2"
Utility	2250 x 1591 mm	7'4" x 5'3"
WC	1475 x 1210 mm	4'10" x 4'0"



### First Floor

Bed 1	5169 x 3624 mm	16'11" x 11'10"
Dressing	3155 x 2265 mm	10'4" x 7'5"
En suite 1	2615 x 2182 mm	8'7" x 7'2"
Bed 2	3722 x 3223 mm	12'2" x 10'7"
En suite 2	2710 x 1178 mm	8'11" x 3'10"
Bed 3	3368 x 2940 mm	11'1" x 9'8"
Bed 4	3623 x 3280 mm	11'10" x 10'9"
Bath	3014 x 2182 mm	9'10" x 7'2"

\*Window may be omitted on certain plots. Speak to a Sales Adviser for details on individual plots.

### Key

B	Boiler	wm	Washing machine space	dw	Dishwasher space	W	Wardrobe space
ST	Store	f/f	Fridge/freezer space	WFH	Working from home space	◀▶	Dimension location



Scan here for more details



DAVID WILSON HOMES

We are on the New Homes Quality Code register of registered developers. "We" refers to the Barratt Developments PLC group brands including Barratt London, Barratt Homes and David Wilson Homes. All images used are for illustrative purposes. These and the dimensions given are illustrative for this house type and individual properties may differ. Please check with your Sales Adviser in respect of individual properties. We give maximum dimensions within each room which includes areas of fixtures and fittings including fitted furniture. These dimensions should not be used for carpet or flooring sizes, appliance spaces or items of furniture. All images, photographs and dimensions are not intended to be relied upon for, nor to form part of, any contract unless specifically incorporated in writing into the contract.

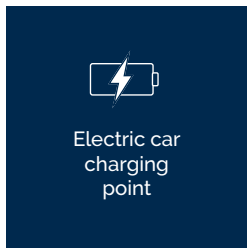


# THE MANNING

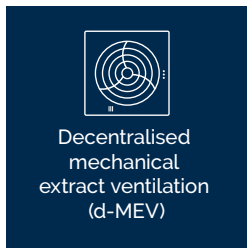
## FIVE BEDROOM DETACHED HOME



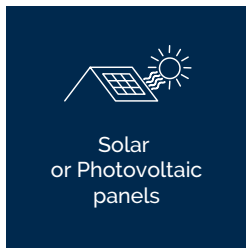
Highly-efficient insulation



Electric car charging point



Decentralised mechanical extract ventilation (d-MEV)



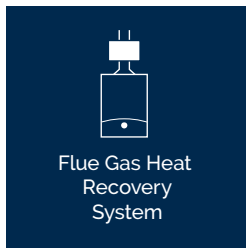
Solar or Photovoltaic panels



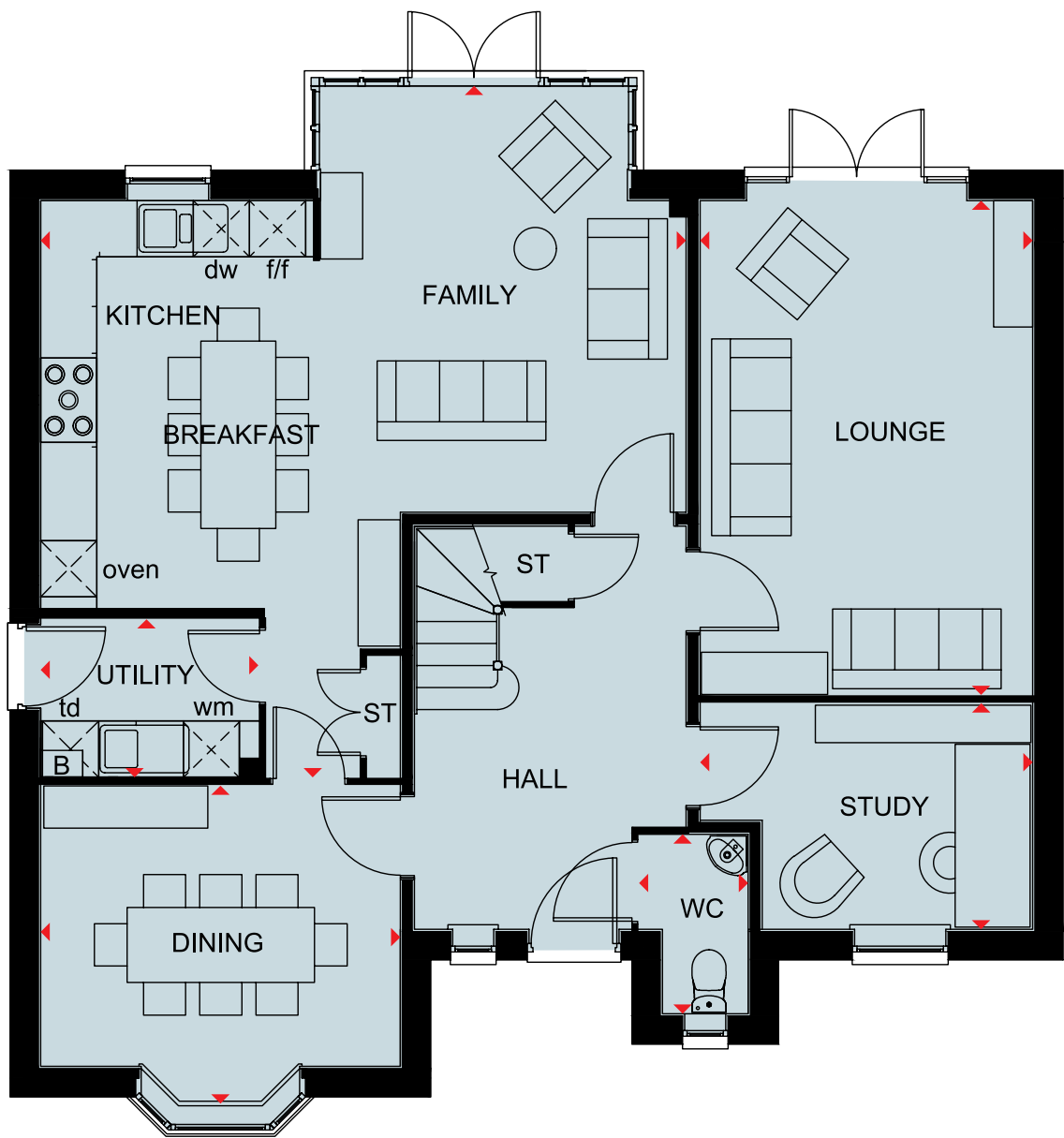
Waste Water Heat Recovery Systems



Argon-filled double-glazing



Flue Gas Heat Recovery System

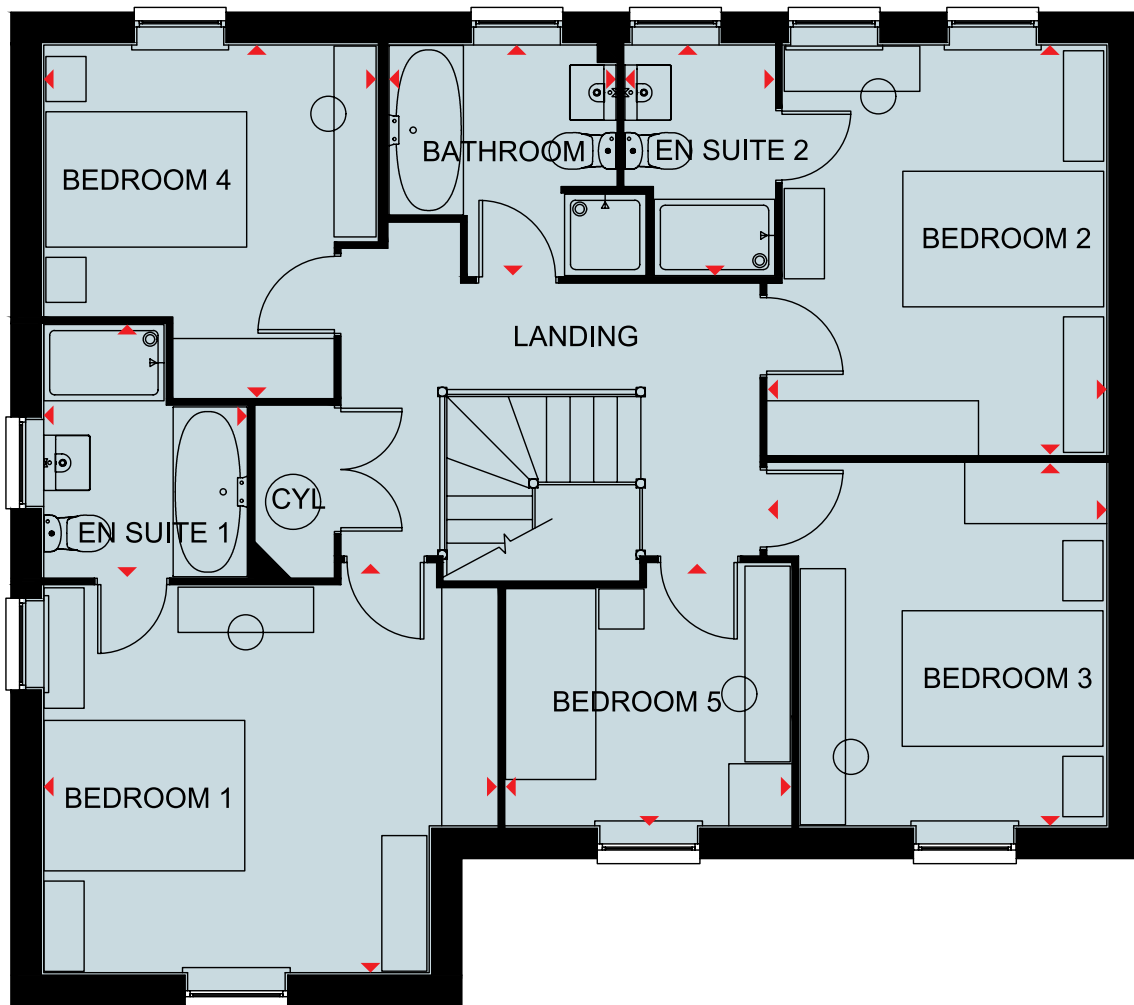


### Ground Floor

Lounge	3550 x 5276 mm	11'8" x 17'4"
Kitchen/Breakfast/Family	7380 x 6890 mm	24'3" x 22'7"
Dining	3840 x 3390 mm	12'7" x 11'1"
Study	2413 x 3550 mm	7'11" x 11'8"
Utility	2325 x 1687 mm	7'8" x 5'6"
WC	1914 x 914 mm	6'3" x 3'10"

### Key

B	Boiler	wm	Washing machine space	dw	Dishwasher space	W	Wardrobe space
ST	Store	f/f	Fridge/freezer space	WFH	Working from home space	◀▶	Dimension location



### First Floor

Bedroom 1	4073 x 4515 mm	13'4" x 14'10"
En Suite 1	2027 x 2514 mm	6'8" x 8'3"
Bedroom 2	3375 x 4079 mm	11'1" x 13'5"
En Suite 2	1489 x 2297 mm	4'11" x 7'6"
Bedroom 3	3610 x 3375 mm	11'10" x 11'1"
Bedroom 4	3312 x 3510 mm	10'10" x 11'6"
Bedroom 5	2839 x 2611 mm	9'4" x 8'7"
Bathroom	2261 x 2296 mm	7'5" x 7'6"



Scan here for more details



DAVID WILSON HOMES

We are on the New Homes Quality Code register of registered developers. "We" refers to the Barratt Developments PLC group brands including Barratt London, Barratt Homes and David Wilson Homes. All images used are for illustrative purposes. These and the dimensions given are illustrative for this house type and individual properties may differ. Please check with your Sales Adviser in respect of individual properties. We give maximum dimensions within each room which includes areas of fixtures and fittings including fitted furniture. These dimensions should not be used for carpet or flooring sizes, appliance spaces or items of furniture. All images, photographs and dimensions are not intended to be relied upon for, nor to form part of, any contract unless specifically incorporated in writing into the contract.