

AMBERSWOOD RISE

SEAMAN WAY, INCE, WIGAN, GREATER MANCHESTER WN2 2LE



A RANGE OF TWO, THREE AND FOUR BEDROOM HOMES

NEW HOMES QUALITY CODE

Housebuilders and developers who build new homes will be expected to register with the New Homes Quality Board (NHQB). As long as a housebuilder or developer has followed the correct registration process, including completing the necessary training, introducing a complaints procedure, and following other processes and procedures that are needed to meet the requirements of this New Homes Quality Code (the code), they will become a registered developer.

Registered developers agree to follow the code and the New Homes Ombudsman Service, including accepting the decisions of the New Homes Ombudsman in relation to dealings with customers. If a registered developer does not meet the required standards, or fails to accept and act in line with the decisions of the New Homes Ombudsman, they may have action taken against them, including being removed from the register of registered developers.

The code sets out the requirements that registered developers must meet. The code may be updated from time to time to reflect changes to industry best practice as well as the decisions of the New Homes Ombudsman Service.

All homes built by registered developers must meet building-safety and other regulations. All registered developers should aim to make sure there are no snags or defects in their properties before the keys are handed over to a customer. If there are any snags or defects, these should be put right within the agreed timescales.

WHAT THE CODE COVERS

For the purposes of this code, 'customer' means a person who is buying or intends to buy a new home which they will live in or give to another person. (If a new home is being bought in joint names, 'the customer' includes all the joint customers.) However, the New Homes Quality Board have also started work to consider other groups of customers and what they should be able to expect from a new home. This includes shared owners and people who are buying a new home to let to other people. Any changes the New Homes Quality Board make to the code to reflect the needs of other groups of customers will be developed through consultation, and they will continually assess and review the effectiveness of the code, and any new laws or regulations that apply. Other areas which are not covered by the code are claims for loss of property value or blight (where a property falls in value or becomes difficult to sell because of major public work in the area), personal injury or claims that are not covered by the scheme rules of the New Homes Ombudsman Service.



BUYING A **NEW** HOME IS AN EXCITING JOURNEY

HERE ARE 5 REASONS WHY YOU SHOULD MOVE WITH BARRATT

1. Award winners, time and time again

Barratt customers are delighted with their new homes. In fact, more than 90% of them would recommend us to a friend. Their high praise has ensured that we've* been accredited with a 5 Star rating from the Home Builders Federation more times than any other national major housebuilder.

Our Site Managers have picked up more awards than any other housebuilder, winning NHBC Pride in the Job awards for quality workmanship and demonstrating our dedication and commitment to building homes of the very highest standard.

2. 10 years peace of mind

The NHBC warranty and insurance policy, known as Buildmark, is designed to give you peace of mind. Buildmark provides the following cover:

- Insolvency cover: If we become insolvent and are therefore unable to finish the construction of your home, NHBC may repay your deposit or any reasonable extra amount you have to pay for your home to be finished.
- Builder warranty period: For the first two years we are responsible for rectifying any defects covered by the warranty. The warranty is backed by NHBC's resolution service and guarantee.
- Insurance cover: In the eight years that follow the builder warranty period, NHBC provides insurance cover for damage caused by defects to certain parts of the home and also for contaminated land.

3. More choice, more style

When you've chosen the right home, you can get creative with additional finishes from our Choices^ range. You could have your home exactly the way you want it, when you choose your preferred flooring, furnishings, appliances, fixtures, fittings and much more. Choices is associated with the build stage of your home, so the earlier you reserve and start the process, the more options you can choose from, all fitted and waiting for you when you move in.

*We' and 'only' refer to the Barratt Developments Plc Group Brands.

†First 2 years covered by Builder Warranty and NHBC Guarantee or similar. Years 3-10 covered by NHBC insurance or similar. Full exclusions and limitations can be found on the NHBC website. Available on virtually all of our developments.

Choices^ range is subject to build stage and additional cost.

Some of the features shown may not be available with every Barratt home or on every Barratt Homes development. Please speak to a Sales Adviser for details of the features available on the home and development you are interested in.

*Source: GOV.UK. This figure represents the level of energy-efficiency of existing housing stock only (homes built up to 2007 when EPCs were introduced).

**Source: Water UK

^Indicative figures, based on research from Briary Energy, April 2022



4. Creating places you'll love to live both inside and out

Our light, open-plan homes are really adaptable – every room can suit a variety of lifestyles. Whether you want space for the kids to play or more room to entertain friends, our fantastic range of homes can give you that flexibility. Our leading designers also factor real furniture sizes into their designs so your home won't be full of awkward nooks and crannies.

We also know our customers love green open spaces and we go to great lengths to maintain and enhance the local environment on our developments. In fact, we plant an average of 20 shrubs or trees for each home we build. Creating a beautiful and sustainable environment to live in.

5. Our energy-efficient homes could save you money

No matter how cold it is outside, you'll feel warm in a brand-new Barratt home. We use highly thermally efficient insulation and argon-filled double-glazing as standard, which allows the heat from the sun in whilst minimising heat loss. This means you could enjoy lower energy bills, whatever the weather. In fact, a brand-new home could be cheaper to run and save you thousands each year, compared to an updated Victorian equivalent^.

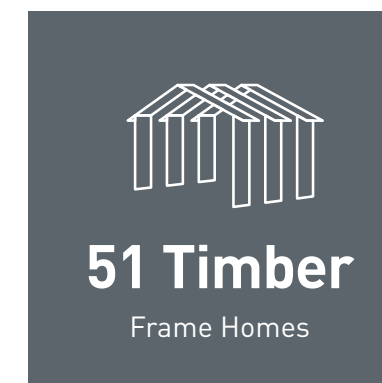
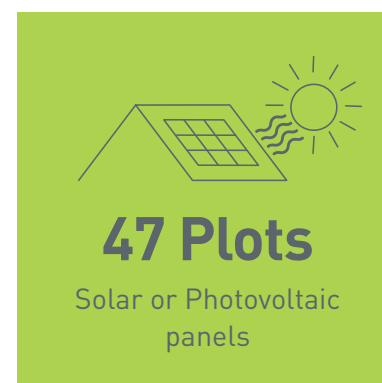
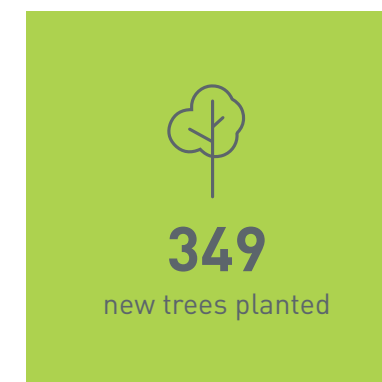
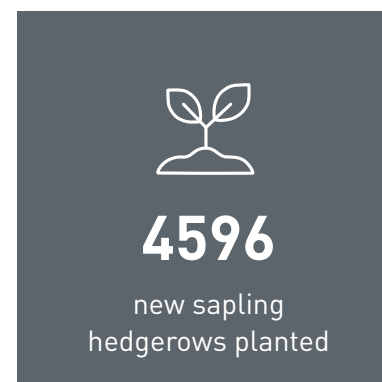
Find out more, talk to one of our Sales Advisers today.

CREATING A SUSTAINABLE COMMUNITY WHERE FAMILIES AND NATURE CAN THRIVE

At Barratt Homes, we do more than simply craft beautiful homes and desirable developments.

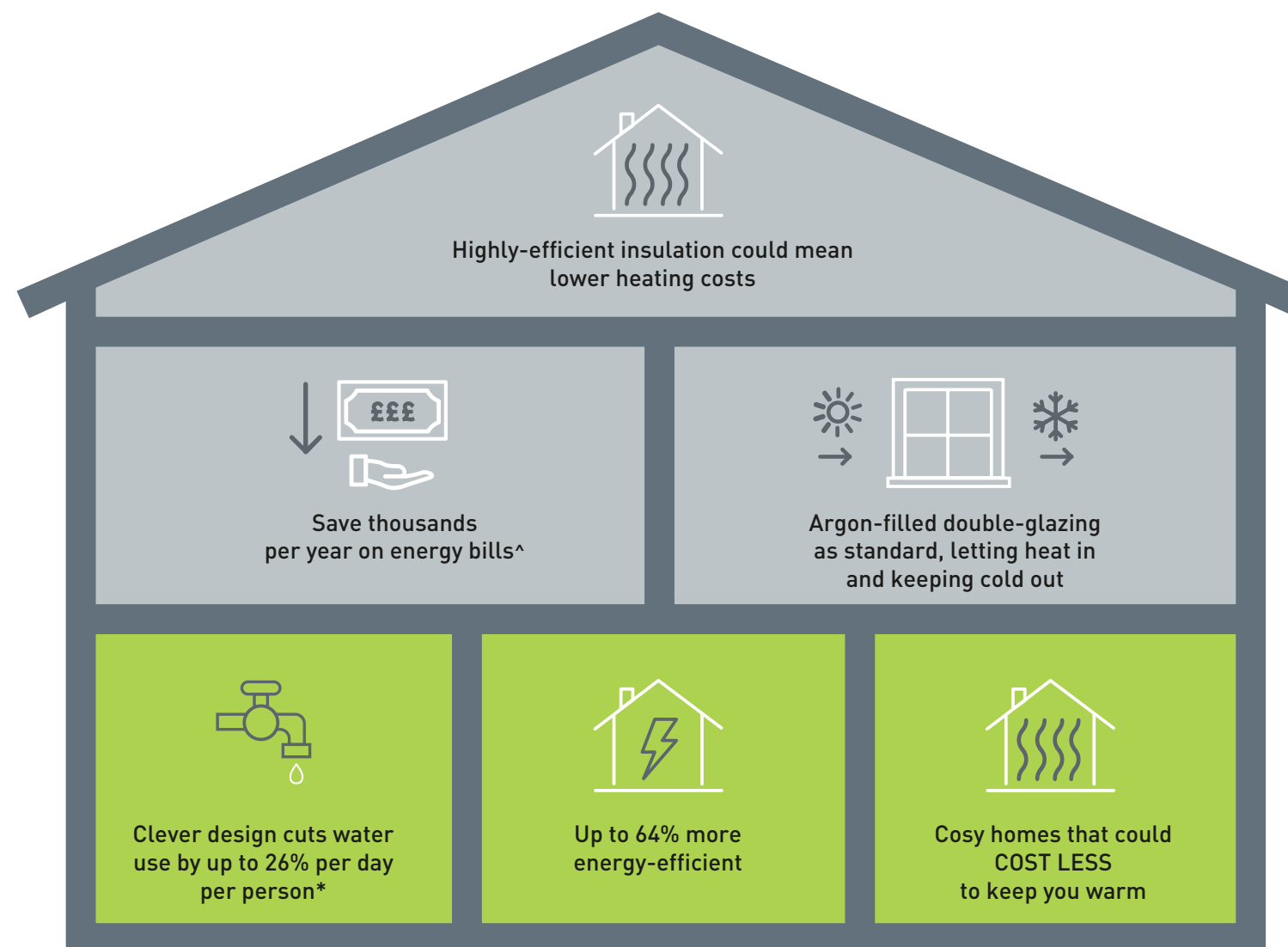
We design and build great places that meet the highest standards, and that promote sustainable, healthy and happy living for our customers.

We know we must give our customers confidence that their homes are designed and built to meet the challenges of the future. We do this through creating places where people and nature can thrive.



WE'RE HELPING TO MAKE YOUR HOME MORE ENERGY-EFFICIENT

We create low-carbon and efficient homes that are designed and built for better living and meet the challenges of the future.



^Indicative figures, based on HBF "Watt a Save" report published July 2023.

*Source: [Water UK](#)

'We', 'our', 'us' refers to the Barratt Developments PLC Group brands including Barratt Homes, David Wilson Homes and Barratt London. Some of the features shown may not be available with every Barratt home or on every Barratt development. Please speak to a Sales Adviser for details of the features available on the home and development you are interested in. To find out more about the energy-efficiency and sustainability of our homes visit our website. All images used are for illustrative purposes only. Information correct at time of publishing.

AMBERSWOOD RISE, WIGAN

Seaman Way, Ince, Wigan, Greater Manchester WN2 2LE

KEY

- Alderney

4 bedroom home
- Ripon

4 bedroom home
- Chester

4 bedroom home
- Windermere

4 bedroom home
- Kingsley

4 bedroom home
- Kingsville

3/4 bedroom home
- Moresby

3 bedroom home
- Buchanan

3 bedroom home
- Lutterworth

3 bedroom home
- Ellerton

3 bedroom home
- Folkestone

3 bedroom home
- Brandon

3 bedroom home
- Birchmoor

3 bedroom home
- Rowan

2 bedroom home
- Denford

2 bedroom home



Wildflower Meadow



Herbaceous/Ornamental Shrub Mix



New Tree Line



Show homes

Small Bird Nest Box



Bat Box



Swift Nesting Box
Sparrow Nesting Terrace



Positioning of our sustainability features are subject to change. Speak to a Sales Adviser for more information.

barratthomes.co.uk



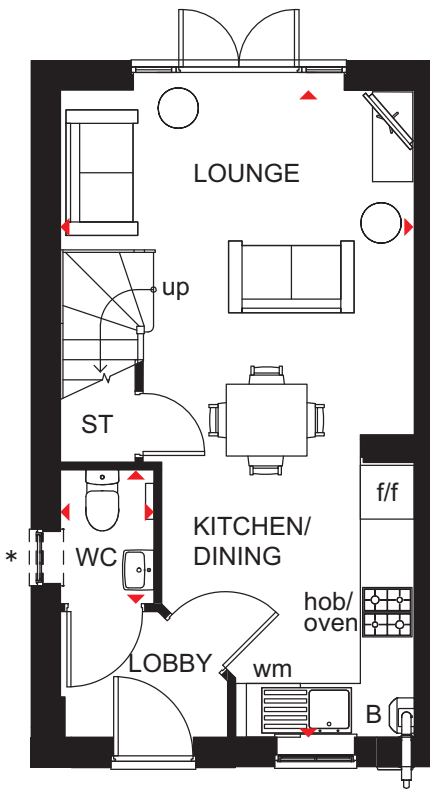
Images and development layouts are for illustrative purposes, should be used for general guidance only and are not intended to form part of any contract or warranty unless specifically incorporated in writing. Development layouts including house types and tenures, the location of affordable housing, parking arrangements, play areas, landscaping and public open spaces are subject to change including any changes required due to a change in planning permission. Amberswood Rise is a marketing name only and may not be the designated postal address, which may be determined by The Post Office.

DENFORD

2 BEDROOM TERRACED HOME



- Free-flowing living space creates a flexible terraced home, ideal for first-time buyers and downsizers
- French doors lead to the rear garden giving the open-plan lounge, dining area and fitted kitchen a bright and airy feeling
- Upstairs are two double bedrooms and the bathroom

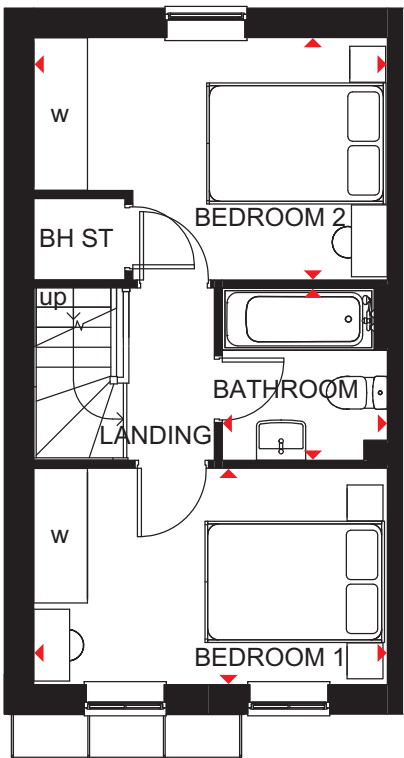


Ground Floor

Kitchen/ Dining/Lounge	3943 x 7210mm	12'11" x 23'8"
WC	1040 x 1490mm	3'5" x 4'11"

(Approximate dimensions)

* WC window may be omitted on certain plots.
Speak to a Sales Adviser for details on individual plots



First Floor

Bedroom 1	3943 x 2412mm	12'11" x 7'11"
Bedroom 2	3943 x 2702mm	12'11" x 8'10"
Bathroom	1840 x 1920mm	6'0" x 6'4"

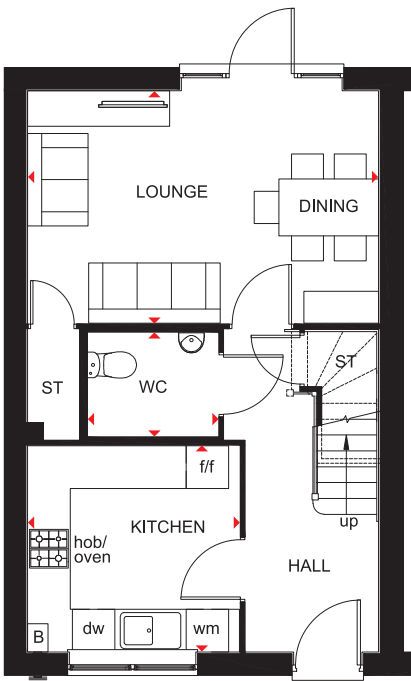
(Approximate dimensions)

KEY	B	Boiler	wm	Washing machine space	◀▶	Dimension location
	ST	Store	f/f	Fridge/freezer space		
	BH ST	Bulkhead store	w	Wardrobe space		

3 BEDROOM HOME



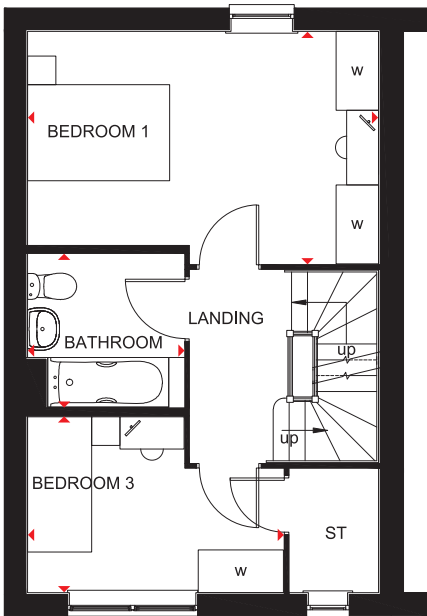
- Flexible three bedroom home, designed over three floors
- Open-plan lounge and dining area with access to the rear garden
- Front-aspect, stylish fitted kitchen
- One double bedroom, single bedroom and a family bathroom make up the first floor
- A further twin bedroom with storage space covers the second floor



Ground Floor

Lounge/Dining	3266 x 4936mm	10'9" x 16'2"
Kitchen	2900 x 2980mm	9'6" x 9'9"
WC	1502 x 1838mm	4'11" x 6'0"

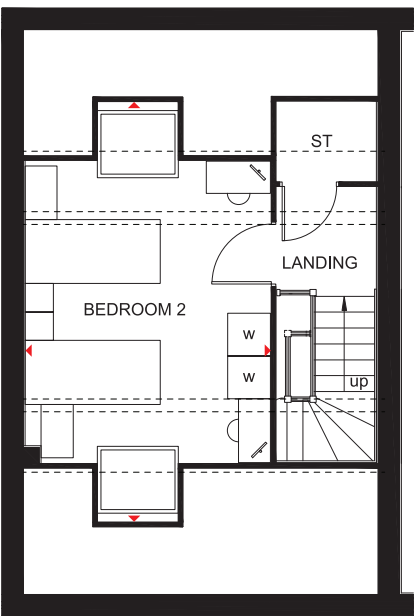
(Approximate dimensions)



First Floor

Bedroom 1	3266 x 4936mm	10'9" x 16'2"
Bedroom 3	2478 x 3610mm	8'2" x 11'10"
Bathroom	2145 x 2205mm	7'0" x 7'3"

(Approximate dimensions)



Second Floor

Bedroom 2	4232* x 3446*mm	13'11"* x 11'4"*
-----------	-----------------	------------------

(Approximate dimensions)

*Overall floor dimension includes lower ceiling areas.

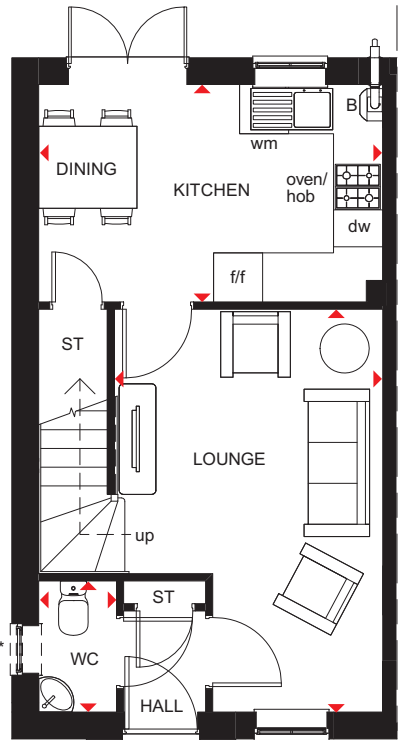
KEY	B	Boiler	f/f	Fridge/freezer space	◀ ▶	Dimension location
	ST	Store	dw	Dishwasher space		
	wm	Washing machine space	w	Wardrobe space		

BRANDON

3 BEDROOM HOME



- Modest home designed for modern living
- Front-aspect lounge leading to an open-plan fitted kitchen with dining area and French doors to the garden
- Spacious main bedroom upstairs, as well as two single bedrooms and the family bathroom

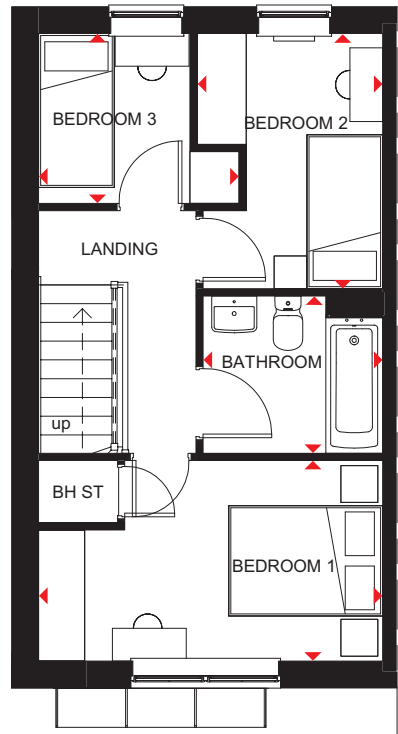


Ground Floor

Lounge	3276 x 4917mm	10'9" x 16'2"
Kitchen/Dining	4201 x 2655mm	13'9" x 8'9"
WC	950 x 1601mm	3'1" x 5'3"

(Approximate dimensions)

* Windows may be omitted on certain plots. Speak to Sales Adviser for details on individual plots.



First Floor

Bedroom 1	4201 x 2449mm	13'9" x 8'0"
Bedroom 2	2265 x 3115mm	7'5" x 10'3"
Bedroom 3	2448 x 2075mm	8'0" x 6'10"
Bathroom	2193 x 1920mm	7'2" x 6'4"

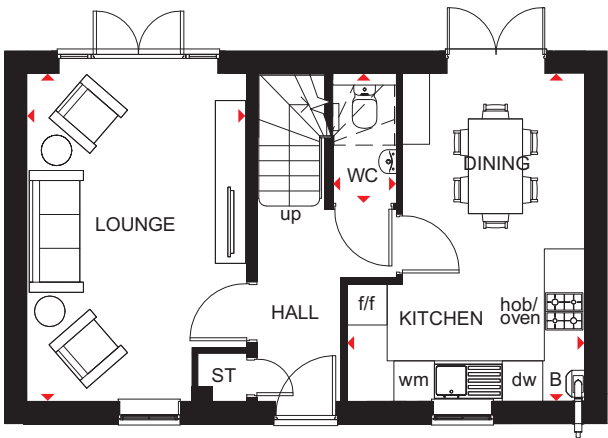
(Approximate dimensions)

KEY	TIU	Biomass heat exchange unit	wm	Washing machine space	w	Wardrobe space
	ST	Store	f/f	Fridge/freezer space	◀▶	Dimension location
	BH ST	Bulkhead Store	dw	Dishwasher space		

3 BEDROOM DETACHED HOME



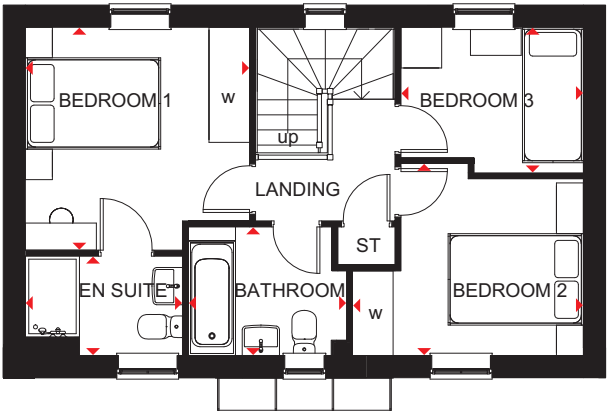
- A three bedroom home offering open-plan kitchen and dining area with French doors opening onto the rear garden
- Well-proportioned lounge with French doors leading to the garden
- First floor features two double bedrooms with en suite to main bedroom, single bedroom and family bathroom



Ground Floor

Lounge	4848 x 3250mm	15'11" x 10'8"
Kitchen/Dining	3521 x 4848mm	11'7" x 15'11"
WC	1921 x 943mm	6'4" x 3'1"

(Approximate dimensions)



First Floor

Bedroom 1	3312 x 3292mm	10'10" x 10'10"
En Suite	2322 x 1468mm	7'7" x 4'10"
Bedroom 2	3413 x 2836mm	11'2" x 9'4"
Bedroom 3	2696 x 2150mm	8'10" x 7'1"
Bathroom	2335 x 1900mm	7'8" x 6'3"

(Approximate dimensions)

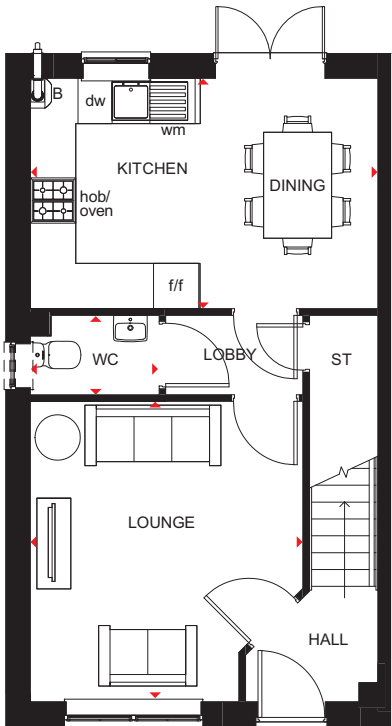
KEY	B	Boiler	f/f	Fridge/freezer space	◀▶	Dimension location
	ST	Store	dw	Dishwasher space		
	wm	Washing machine space	w	Wardrobe space		

ELLERTON

3 BEDROOM HOME



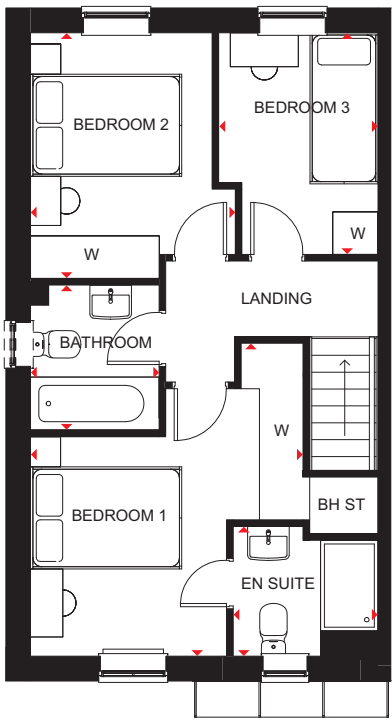
- Bright, practical home, ideal for modern family living
- Large, open-plan kitchen with ample dining space has French doors leading to the rear garden
- Good-sized lounge for all the family to relax in
- Upstairs the main bedroom has an en suite shower room, and there is a further double bedroom, a single bedroom and a family bathroom



Ground Floor

Lounge	3605 x 3972mm	11'10" x 13'0"
Kitchen/Dining	4598 x 3048mm	15'1" x 10'0"
WC	1703 x 1050mm	5'7" x 3'5"

(Approximate dimensions)



First Floor

Bedroom 1	3605 x 4138mm	11'10" x 13'7"
En Suite	1918 x 1716mm	6'4" x 5'8"
Bedroom 2	2708 x 3250mm	8'11" x 10'8"
Bedroom 3	2109 x 2932mm	6'11" x 9'7"
Bathroom	1703 x 1917mm	5'7" x 6'3"

(Approximate dimensions)

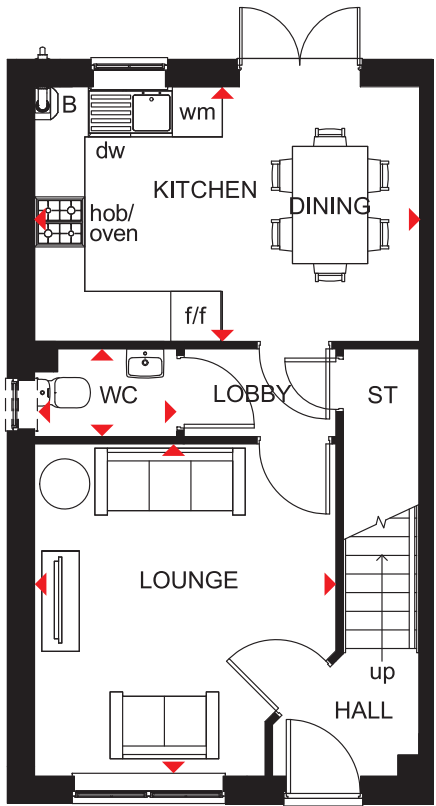
KEY	B	Boiler	wm	Washing machine space	W	Wardrobe space
	ST	Store	f/f	Fridge/freezer space	◀▶	Dimension location
	BH ST	Bulkhead store	dw	Dishwasher space		

ELLERTON

3 BEDROOM TERRACED HOME



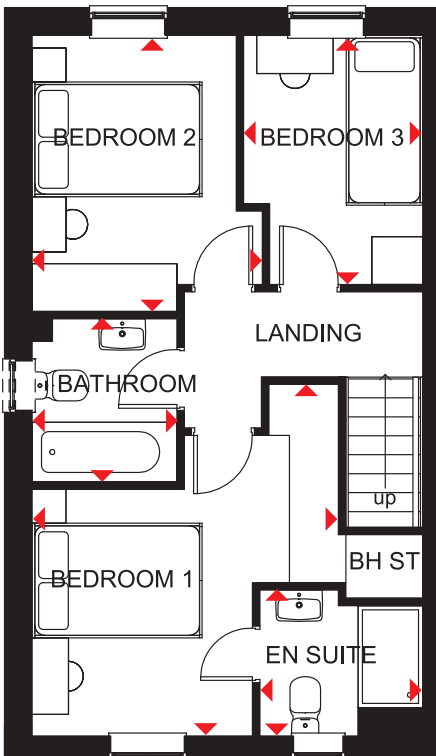
- Bright, practical home, ideal for modern family living
- Large, open-plan kitchen with ample dining space has French doors leading to the rear garden
- Good-sized lounge for all the family to relax in
- Upstairs the main bedroom has an en suite shower room, and there is a further double bedroom, a single bedroom and a family bathroom



Ground Floor

Lounge	3605 x 3972mm	11'10" x 13'0"
Kitchen/Dining	4598 x 3048mm	15'1" x 10'0"
WC	1703 x 1050mm	5'7" x 3'5"

(Approximate dimensions)



First Floor

Bedroom 1	3605 x 4138mm	11'10" x 13'7"
En Suite	1918 x 1716mm	6'4" x 5'8"
Bedroom 2	2708 x 3250mm	8'11" x 10'8"
Bedroom 3	2109 x 2932mm	6'11" x 9'7"
Bathroom	1703 x 1917mm	5'7" x 6'3"

(Approximate dimensions)

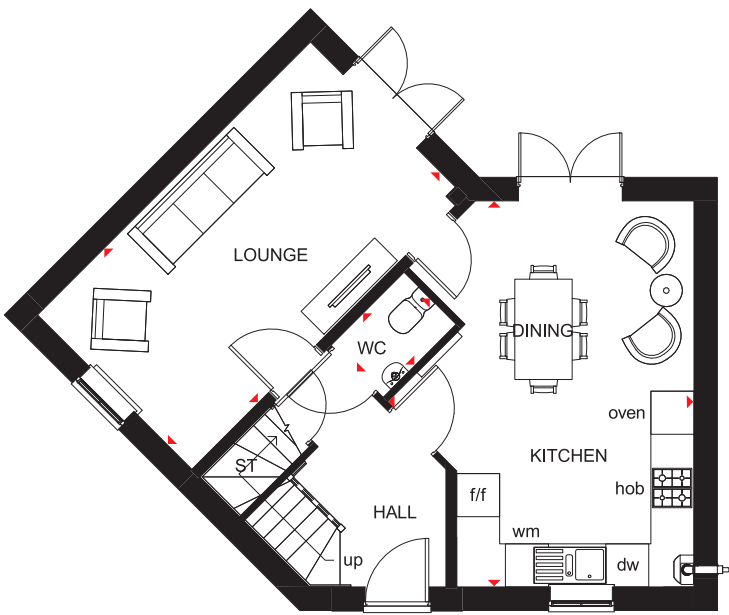
KEY	B	Boiler	wm	Washing machine space	◀▶	Dimension location
	ST	Store	f/f	Fridge/freezer space		
	BH ST	Bulkhead store	dw	Dishwasher space		

LUTTERWORTH

3 BEDROOM DETACHED HOME



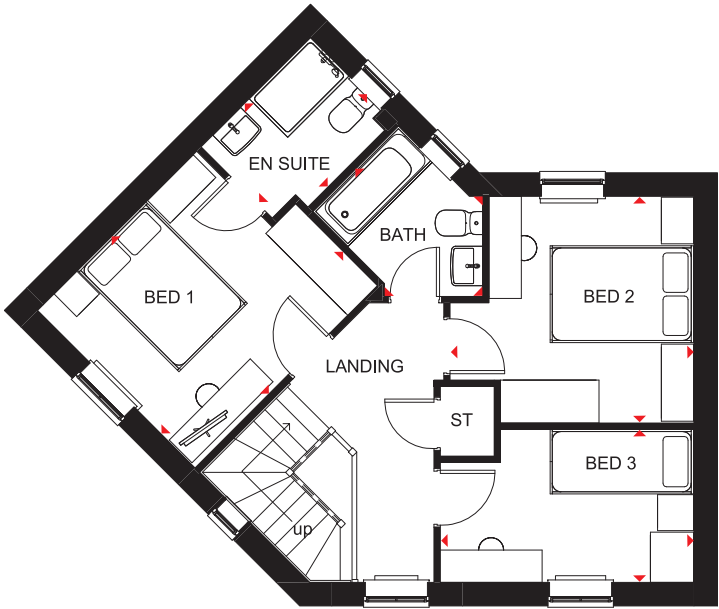
- Great use of a corner plot to create a spacious home
- Bright and flexible areas to enjoy modern-day living
- French doors open onto the rear garden from both the dual-aspect lounge and the open-plan kitchen with dining area
- Galleried landing leads to two double bedrooms – the main with en suite – a single bedroom and the family bathroom



Ground Floor

Lounge	5385 x 3045mm	17'8" x 10'0"
Kitchen/Dining	4274 x 5385mm	14'0" x 17'8"
WC	1028 x 1441mm	3'4" x 4'9"

(Approximate dimensions)



First Floor

Bedroom 1	3107 x 3599mm	10'2" x 11'10"
En Suite	1648 x 2159mm	5'5" x 7'1"
Bedroom 2	3404 x 3163mm	11'2" x 10'5"
Bedroom 3	3540 x 2134mm	11'7" x 7'0"
Bathroom	2519 x 1958mm	8'3" x 6'5"

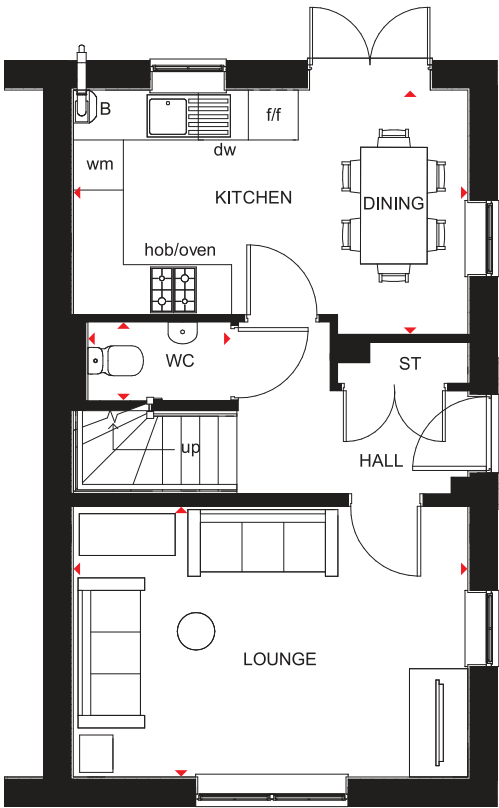
(Approximate dimensions)

KEY	ST	Store	dw	Dishwasher space
	wm	Washing machine space	◀▶	Dimension location
	f/f	Fridge/freezer space		

3 BEDROOM HOME



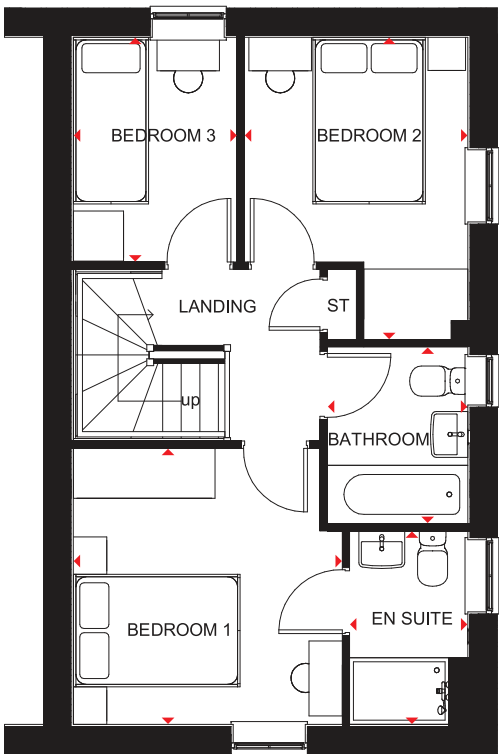
- A three bedroom home offering open-plan kitchen and dining area with French doors opening onto the rear garden
- First floor features two double bedrooms with en suite to the main bedroom
- Single bedroom and family bathroom also located on the first floor



Ground Floor

Lounge	4737 x 3250mm	15'6" x 10'8"
Kitchen/Dining	4737 x 2933mm	15'6" x 9'7"
WC	1894 x 945mm	6'3" x 3'1"

(Approximate dimensions)



First Floor

Bedroom 1	3229 x 3312mm	10'7" x 10'10"
En Suite	2322 x 1421mm	7'7" x 4'8"
Bedroom 2	2682 x 3628mm	8'10" x 11'11"
Bedroom 3	2696 x 1968mm	8'10" x 6'5"
Bathroom	2120 x 1688mm	6'11" x 5'6"

(Approximate dimensions)

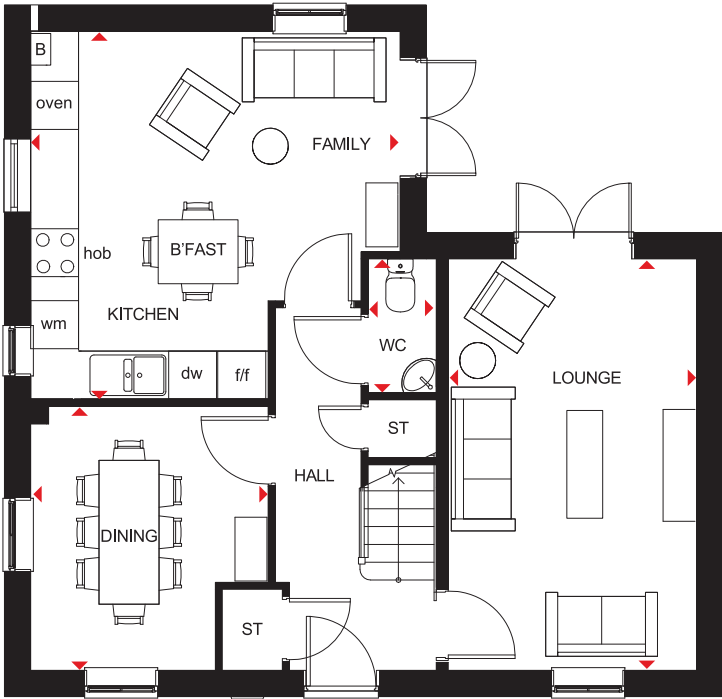
KEY	B	Boiler	f/f	Fridge/freezer space
	ST	Store	dw	Dishwasher space
	wm	Washing machine space	◀▶	Dimension location

ALDERNEY

4 BEDROOM DETACHED HOME



- A large fitted kitchen with family and breakfast areas provides this spacious home with the ideal hub for all the family
- French doors leading to the rear garden from both the kitchen and the separate lounge give it a bright and airy feeling, and there is a separate dual-aspect dining room
- Upstairs are three double bedrooms, the main bedroom with en suite, a single bedroom and a family bathroom



Ground Floor

Lounge	5148 x 3110mm	16'11" x 10'2"
Kitchen/Family/Breakfast	4623 x 4603mm	15'2" x 15'1"
Dining	3307 x 2972mm	10'10" x 9'9"
WC	1675 x 853mm	5'6" x 2'10"

(Approximate dimensions)



First Floor

Bedroom 1	4623 x 3104mm	15'2" x 10'2"
En Suite	2075 x 1191mm	6'10" x 3'11"
Bedroom 2	4523 x 3115mm	14'10" x 10'3"
Bedroom 3	3724 x 3115mm	12'3" x 10'3"
Bedroom 4	2275 x 2163mm	7'6" x 7'1"
Bathroom	2075 x 1702mm	6'10" x 5'7"

(Approximate dimensions)

KEY

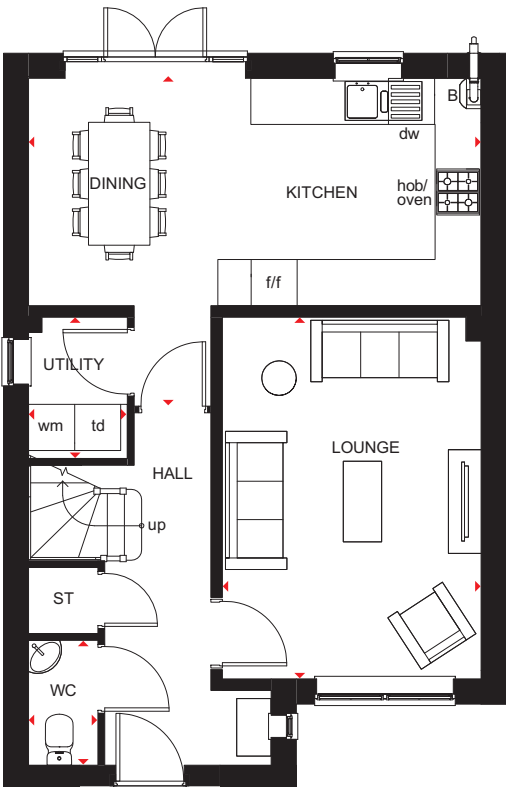
B	Boiler
ST	Store
wm	Washing machine space

f/f	Fridge/freezer space
dw	Dishwasher space
◀▶	Dimension location

4 BEDROOM HOME



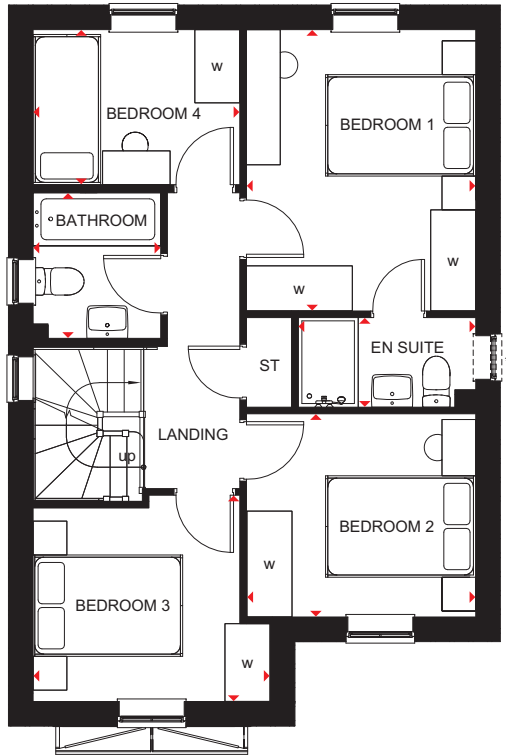
- Bright, airy family home with oversized windows to maximise light
- The large open-plan kitchen has a dining area with French doors leading to the garden. There is also a separate utility room
- The spacious lounge is just the place for the family to relax in
- Upstairs features three double bedrooms, the main with en suite, one single bedroom and a family bathroom



Ground Floor

Lounge	3370 x 4710mm	11'1" x 15'5"
Kitchen/Dining	5895 x 4268mm	19'4" x 14'0"
Utility	1287 x 1841mm	4'2" x 6'0"
WC	887 x 1627mm	2'9" x 5'3"

(Approximate dimensions)



First Floor

Bedroom 1	3054 x 3746mm	10'0" x 12'3"
En Suite	2366 x 1193mm	7'8" x 3'9"
Bedroom 2	3054 x 2705mm	10'0" x 8'9"
Bedroom 3	3160 x 2747mm	10'4" x 9'0"
Bedroom 4	2754 x 2065mm	9'0" x 6'8"
Bathroom	1700 x 1937mm	5'6" x 6'4"

(Approximate dimensions)

*Window may be omitted on certain plots. Speak to a Sales Adviser for plot-specific details.

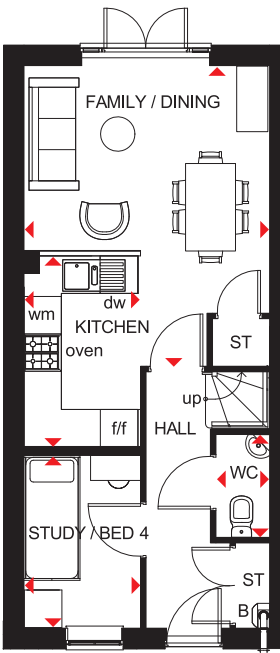
KEY	B	Boiler	f/f	Fridge/freezer space	w	Wardrobe space
	ST	Store	dw	Dishwasher space	◀▶	Dimension location
	wm	Washing machine space	td	Tumble dryer space		

KINGSVILLE

4 BEDROOM SEMI-DETACHED HOME



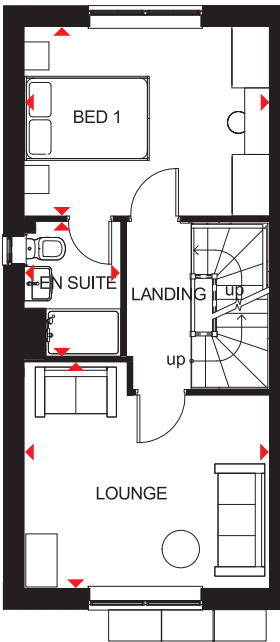
- An ideal family home designed over three floors
- A generous open-plan kitchen with dining and family areas, and a fourth bedroom/study are on the ground floor
- On the first floor oversized windows fill the lounge and main bedroom with light, giving them a bright and airy feeling, and the bedroom has an en suite
- The second floor offers a further double bedroom, a single bedroom and a family bathroom



Ground Floor

Family/Dining	3936 x 4820mm	12'11" x 15'10"
Kitchen	1866 x 3060mm	6'1" x 10'0"
Study/Bed 4	1866 x 2749mm	6'1" x 9'0"
WC	861 x 1649mm	2'10" x 5'5"

(Approximate dimensions)

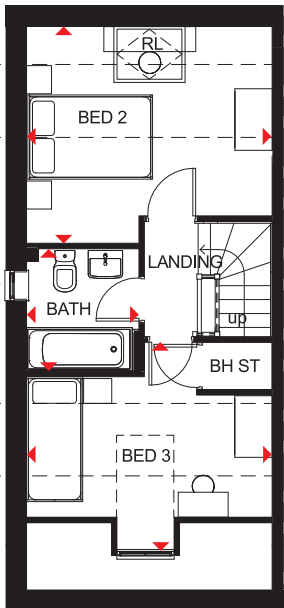


First Floor

Lounge	3936 x 3630mm	12'11" x 11'11"
Bedroom 1	3936 x 3042mm	12'11" x 10'0"
En Suite	1551 x 2163mm	5'1" x 7'1"

(Approximate dimensions)

* Window may be omitted on certain plots. Speak to a Sales Adviser for details on individual plots.



Second Floor

Bedroom 2	3936 x 3508mm	12'11" x 11'6"
Bedroom 3	3936 x 3325mm	12'11" x 10'11"
Bathroom	1761 x 1963mm	5'9" x 6'5"

(Approximate dimensions)

* Window may be omitted on certain plots. Speak to a Sales Adviser for details on individual plots.

* Overall floor dimension includes lower ceiling areas.

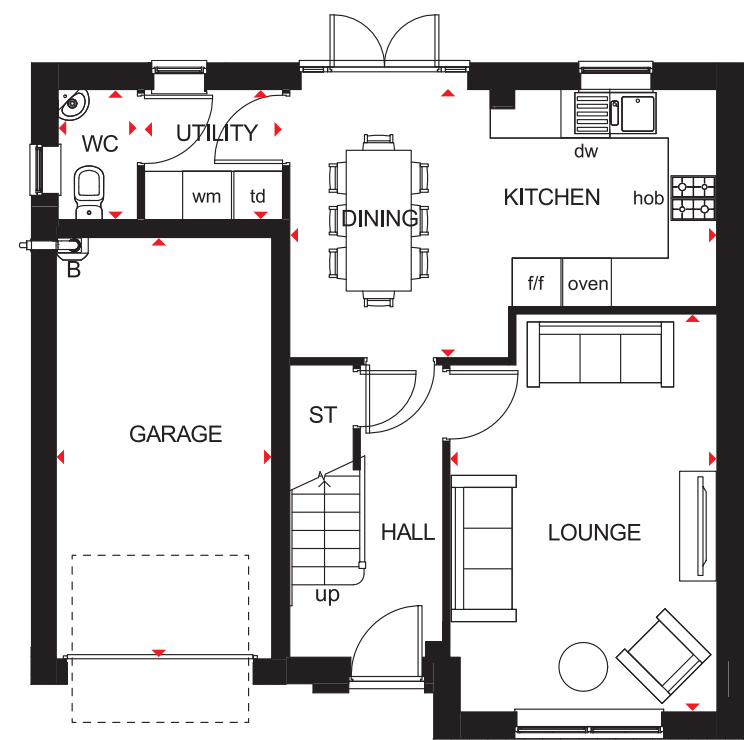
KEY	B	Boiler	wm	Washing machine space	RL	Roof light
	ST	Store	f/f	Fridge/freezer space	◀▶	Dimension location
	BH ST	Bulkhead Store	dw	Dishwasher space		

RIPON

4 BEDROOM DETACHED HOME



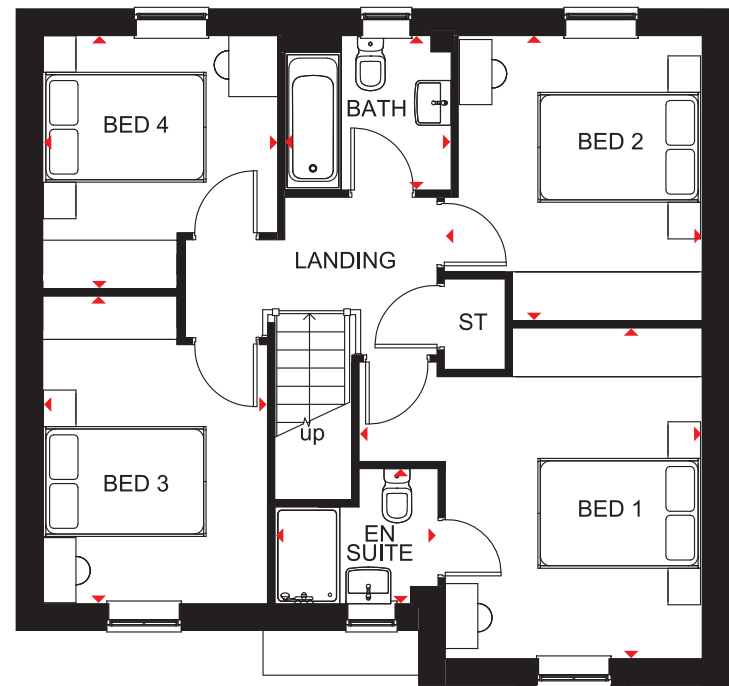
- Bright and spacious family home with oversized windows allowing light to flow through, with an integral garage.
- As well as a generous lounge, the open-plan kitchen with dining area provides room for all the family to enjoy. There is also a separate utility.
- Upstairs are four double bedrooms, the main bedroom with en suite, and a family bathroom



Ground Floor

Lounge	4898 x 3287mm	16'1" x 10'9"
Kitchen/Dining	5259 x 3151mm	17'3" x 10'4"
Utility	1700 x 1602mm	5'7" x 5'3"
WC	976 x 1602mm	3'2" x 5'3"
Garage	5189 x 2657mm	17'0" x 8'9"

(Approximate dimensions)



First Floor

Bedroom 1	4196 x 4068mm	13'9" x 13'4"
En Suite	2011 x 1661mm	6'7" x 5'5"
Bedroom 2	3174 x 3504mm	10'5" x 11'6"
Bedroom 3	2764 x 3774mm	9'1" x 12'5"
Bedroom 4	2888 x 3123mm	9'6" x 10'3"
Bathroom	2046 x 1899mm	6'9" x 6'3"

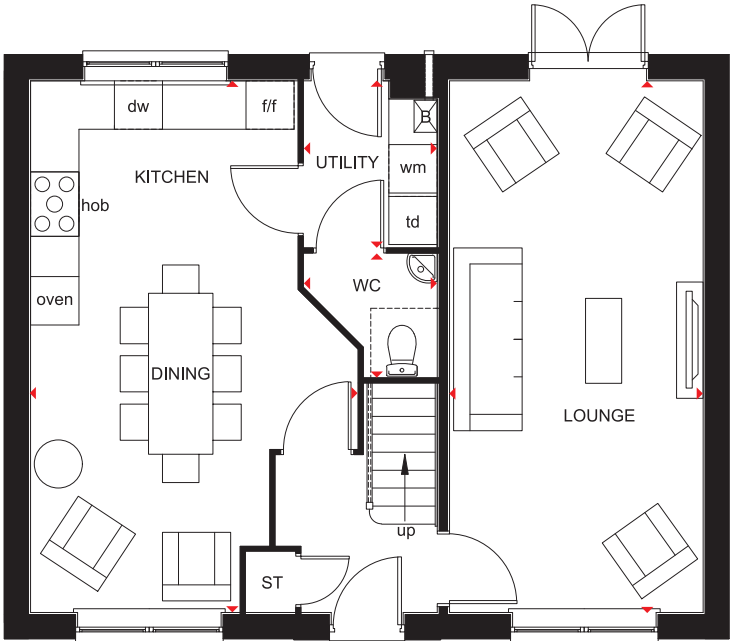
(Approximate dimensions)

KEY	B	Boiler	f/f	Fridge/freezer space	◀ ▶	Dimension location
	ST	Store	dw	Dishwasher space		
	wm	Washing machine space	td	Tumble dryer space		

4 BEDROOM HOME



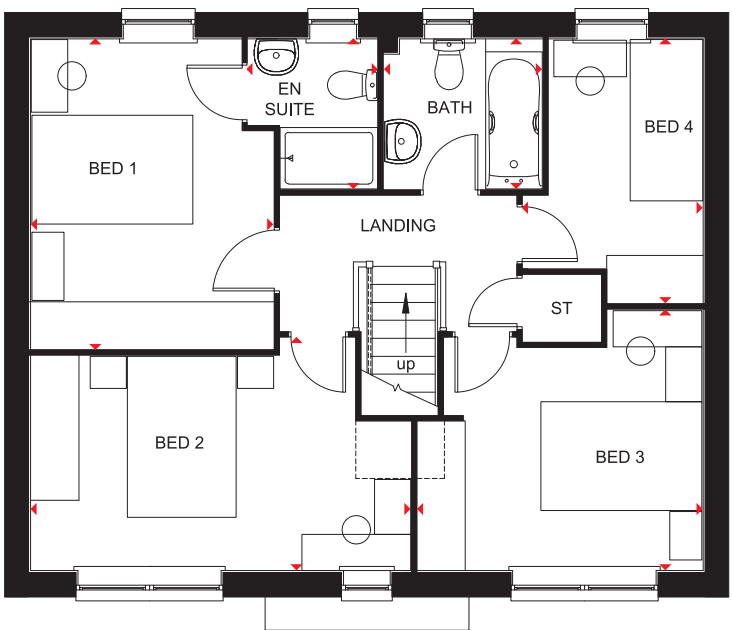
- Spacious family home designed for modern living
- Flexible, open-plan kitchen with dining and family areas, and a separate utility room
- Generous dual-aspect lounge with room for all the family to relax in has French doors to the rear garden, where living space can be easily extended in good weather
- Three double bedrooms, the main with en suite, are on the first floor along with a single bedroom and family bathroom



Ground Floor

Lounge	3150 x 6600mm	10'4" x 21'8"
Kitchen/Dining	4025 x 6600mm	13'2" x 21'8"
WC	1650 x 1524mm	5'5" x 5'0"
Utility	1650 x 2060mm	5'5" x 6'9"

(Approximate dimensions)



First Floor

Bedroom 1	3013 x 3850mm	9'11" x 12'8"
En Suite	1601 x 1863mm	5'3" x 6'1"
Bedroom 2	2887 x 4720mm	9'6" x 15'6"
Bedroom 3	3237 x 3542mm	10'7" x 11'7"
Bedroom 4	2236 x 3275mm	7'4" x 10'9"
Bathroom	1961 x 1863mm	6'5" x 6'1"

(Approximate dimensions)

KEY	B	Boiler	f/f	Fridge/freezer space	◀▶	Dimension location
	ST	Store	dw	Dishwasher space		
	wm	Washing machine space	td	Tumble dryer space		

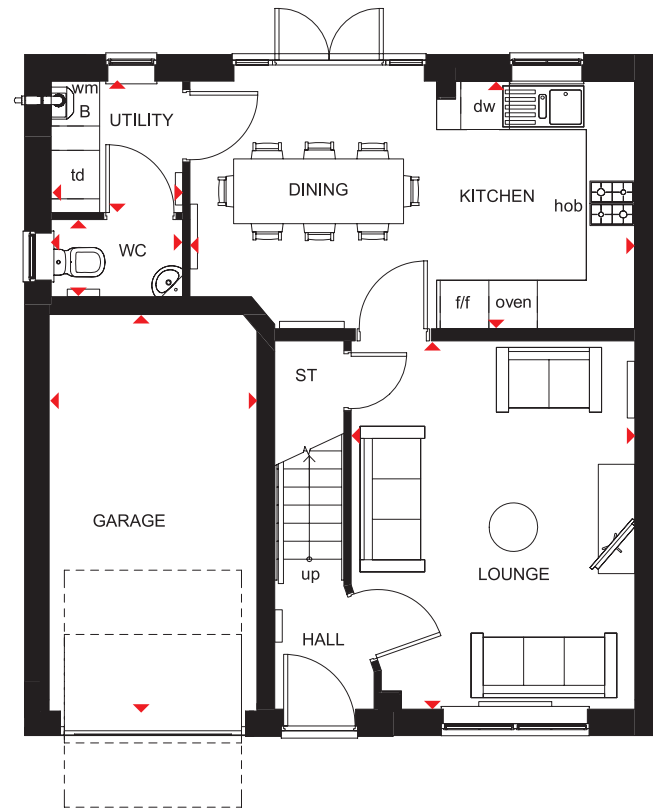
WINDERMERE

THE CLASSIC
COLLECTION

4 BEDROOM DETACHED HOME



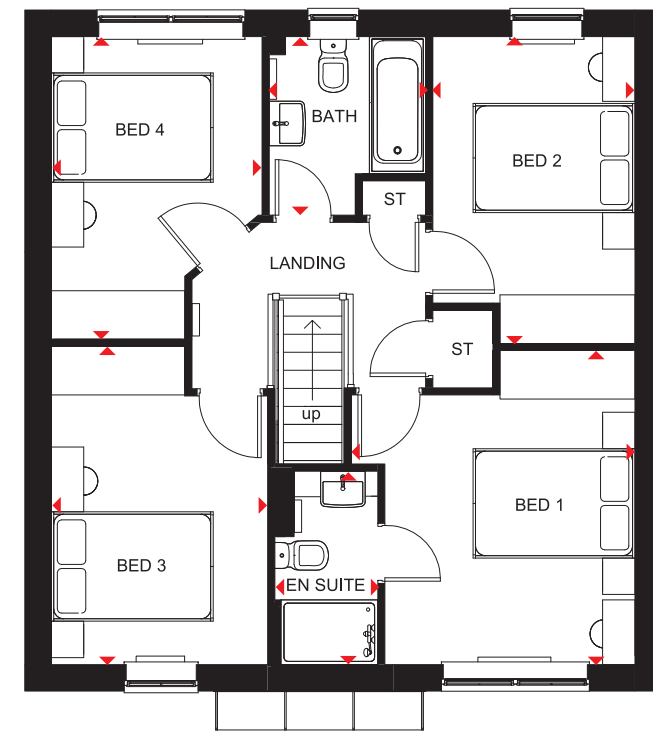
- Light flows into this bright, airy family home through oversized windows, giving a feeling of spaciousness
- The large open-plan kitchen is ideal for modern living with a dining area that has French doors leading to the garden, and a separate utility room
- A spacious lounge is the perfect place for all the family to relax in
- Upstairs are four double bedrooms, the main with en suite, and a family bathroom



Ground Floor

Lounge	3506 x 4548mm	11'6" x 14'11"
Kitchen/Dining	5497 x 3060mm	18'0" x 10'0"
Utility	1627 x 1623mm	5'4" x 5'4"
WC	1627 x 952mm	5'4" x 3'1"
Garage	2568 x 4900mm	8'5" x 16'1"

(Approximate dimensions)



First Floor

Bedroom 1	3506 x 3881mm	11'6" x 12'9"
En Suite	1272 x 2390mm	4'2" x 7'10"
Bedroom 2	2498 x 3791mm	8'2" x 12'5"
Bedroom 3	2675 x 3931mm	8'9" x 12'11"
Bedroom 4	2604 x 3739mm	8'7" x 12'3"
Bathroom	1934 x 2208mm	6'4" x 7'3"

(Approximate dimensions)

KEY	B	Boiler	f/f	Fridge/freezer space	◀ ▶	Dimension location
	ST	Store	dw	Dishwasher space		
	wm	Washing machine space	td	Tumble dryer space		

barratthomes.co.uk



IMPORTANT NOTICE: [Computer Generated] Images are for illustrative purposes only. Individual features such as windows, brick and other materials' colours may vary, as may heating and electrical layouts. Floor plans are intended to give a general indication of the proposed floor layout only. The dimensions are accurate to within +or- 50mm. Dimensions should not be used for carpet sizes, appliance spaces or items of furniture. Please ask our sales adviser for details of the treatments specified for individual plots. [Computer Generated] Images and dimensions are not intended to form part of any contract or warranty. Furniture and landscaping is shown for illustrative purposes only.

www.barratthomes.co.uk

Contact the development on 0333 3558 474