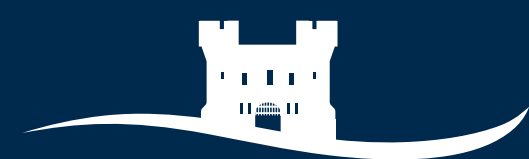




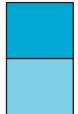
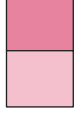
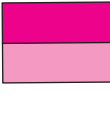
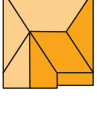
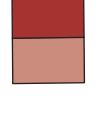
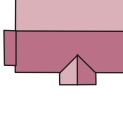
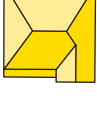
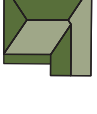
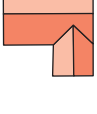



NANT Y CASTELL

- CALDICOT -



NANT Y CASTELL

- CALDICOT -

-  **The Wilford**
2 bedroom home
 -  **The Archford**
3 bedroom home
 -  **The Hadley**
3 bedroom home
 -  **The Blyford**
3 bedroom home
 -  **The Ingleby**
4 bedroom home
 -  **The Hollinwood**
4 bedroom home
 -  **The Meriden**
4 bedroom home
 -  **The Exeter**
4 bedroom home
 -  **The Avondale**
4 bedroom home
 -  **The Holden**
4 bedroom home
-
-  **Affordable Housing - Social Rented**
 -  **Sales Office & Show Home**



dwh.co.uk



DAVID WILSON HOMES
WHERE QUALITY LIVES

THE WILFORD

TWO BEDROOM HOME



Individual plots may vary, please speak to the Sales Adviser



Light streams into The Wilford through French doors and sash style windows, making this home a bright and pleasant place to live. The stylish fitted kitchen and the flexibility of the spacious,

open-plan lounge with dining area are perfect for modern living. Two good-sized double bedrooms and the bathroom are on the first floor.



DAVID WILSON HOMES

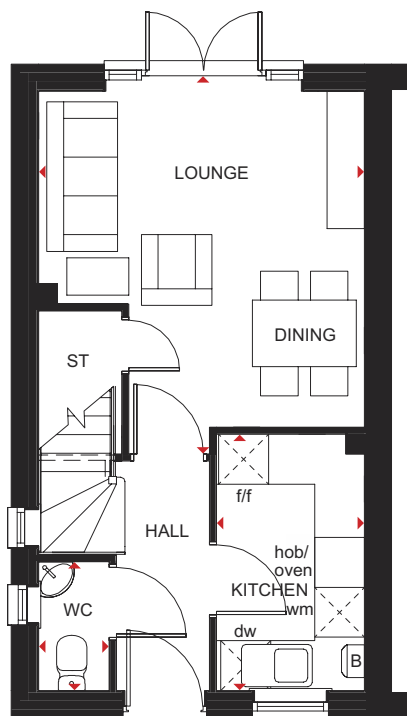
WHERE QUALITY LIVES

THE WILFORD

TWO BEDROOM HOME

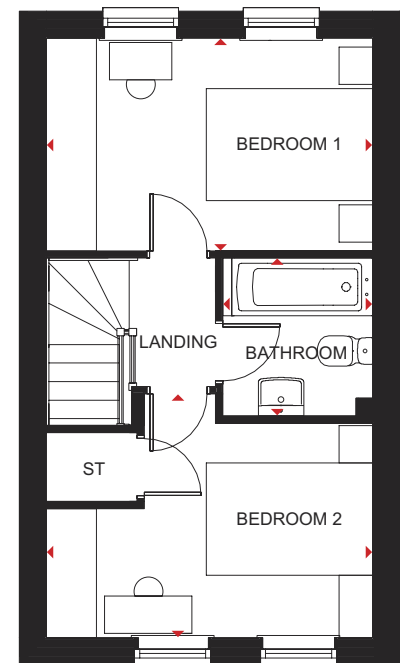
Key

B	Boiler	f/f	Fridge/freezer space	dw	Dishwasher space
ST	Store	wm	Washing machine space	◀▶	Dimension location



Ground Floor

Lounge/Dining	4362 x 3923 mm	14'4" x 12'10"
Kitchen	3083 x 1780 mm	10'1" x 5'10"
WC	1614 x 884 mm	5'3" x 2'10"



First Floor

Bedroom 1	3923 x 2491 mm	12'10" x 8'2"
Bedroom 2	3923 x 2931 mm	12'10" x 9'7"
Bathroom	1897 x 1695 mm	6'3" x 5'7"

All images used are for illustrative purposes only. Floor plans are intended to give a general indication of the proposed floor layout only. The dimensions are accurate to within + or - 50mm but should not be used for carpet or flooring sizes, appliance spaces or items of furniture. Please ask our Sales Adviser for details of the treatments specified for individual plots. Individual features such as windows, brick and other materials' colours may vary, as may drainage, heating and electrical layouts. All images, photographs and dimensions are not intended to form part of any contract or warranty unless specifically incorporated in writing into the contract.

DWH-5_P204-EC5DS00/SP433361

We are on the New Homes Quality Code register of registered developers. "We" refers to the Barratt Developments PLC group brands including Barratt London, Barratt Homes and David Wilson Homes.

THE ARCHFORD

THREE BEDROOM HOME



Individual plots may vary, please speak to the Sales Adviser



The sash-style windows give the Archford home a traditional look. Inside however, the stylish open-plan kitchen and dining area is designed very much for modern living, with French doors opening out onto the rear garden, creating a bright, light-filled room. A

lobby separating the kitchen and the lounge, has stairs leading to the first floor. Here, the main bedroom has its own en suite, with a separate bathroom for the rest of the family. A further double bedroom and a single bedroom complete this attractive home.



DAVID WILSON HOMES

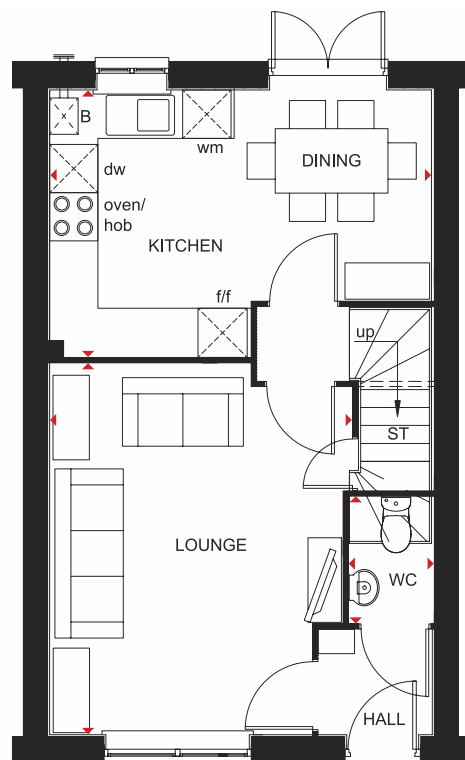
WHERE QUALITY LIVES

THE ARCHFORD

THREE BEDROOM HOME

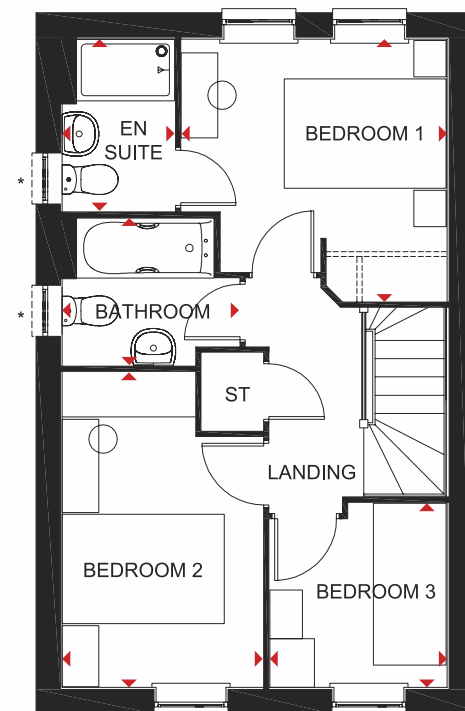
Key

B	Boiler	f/f	Fridge/freezer space	dw	Dishwasher space
ST	Store	wm	Washing machine space	◀▶	Dimension location



Ground Floor

Lounge	4604 x 3746 mm	15'1" x 12'3"
Kitchen/Dining	4750 x 3310 mm	15'7" x 10'10"
WC	1561 x 1054 mm	5'1" x 3'5"



First Floor

Bedroom 1	3234 x 3276 mm	10'7" x 10'9"
En suite	1385 x 2119 mm	4'7" x 6'11"
Bedroom 2	2475 x 3891 mm	8'1" x 12'9"
Bedroom 3	2286 x 2186 mm	7'6" x 7'2"
Bathroom	1815 x 2181 mm	5'11" x 7'2"

*Window may be omitted on certain plots. Speak to a Sales Adviser for details on individual plots.

All images used are for illustrative purposes only. Floor plans are intended to give a general indication of the proposed floor layout only. The dimensions are accurate to within + or - 50mm but should not be used for carpet or flooring sizes, appliance spaces or items of furniture. Please ask our Sales Adviser for details of the treatments specified for individual plots. Individual features such as windows, brick and other materials' colours may vary, as may drainage, heating and electrical layouts. All images, photographs and dimensions are not intended to form part of any contract or warranty unless specifically incorporated in writing into the contract.

We are on the New Homes Quality Code register of registered developers. "We" refers to the Barratt Developments PLC group brands including Barratt London, Barratt Homes and David Wilson Homes.

THE HADLEY

THREE BEDROOM HOME



Individual plots may vary, please speak to the Sales Adviser



The sash-style windows give this detached home a delightfully traditional look. Yet inside, the open-plan kitchen – with its dining and family areas and separate utility room – is designed very much for busy, modern living. The spacious

dual-aspect lounge meanwhile provides the perfect place to relax and has French doors leading onto the garden. Upstairs are two double bedrooms, the large main bedroom with en suite, a single bedroom and a family bathroom.



DAVID WILSON HOMES
WHERE QUALITY LIVES

THE HADLEY

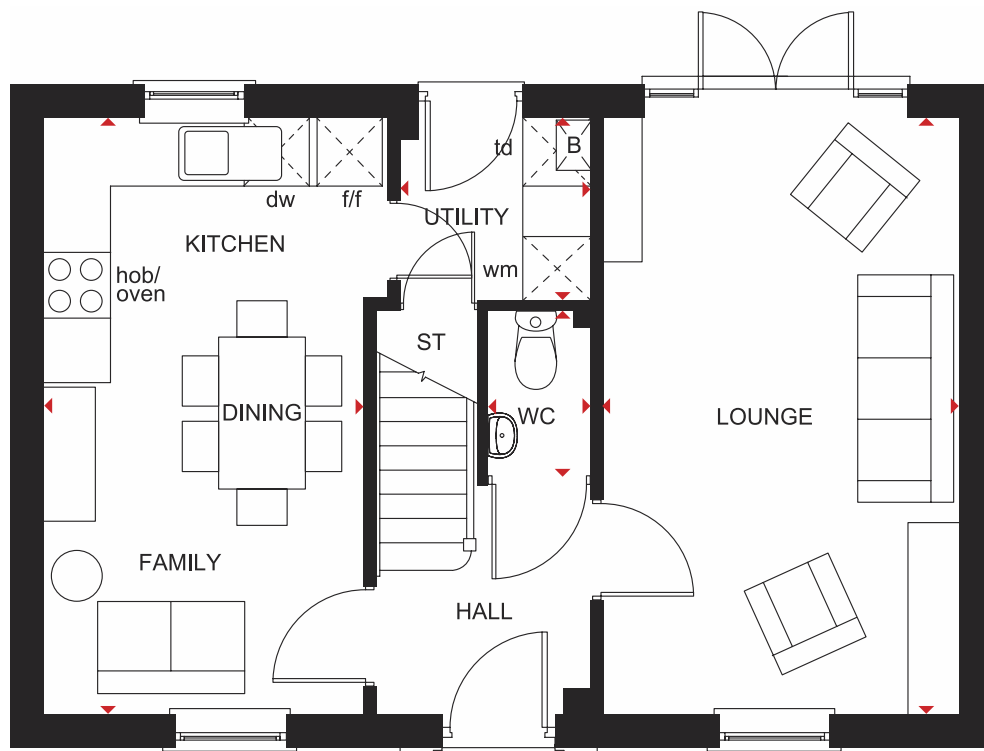
THREE BEDROOM HOME

Key

B Boiler
ST Store
f/f Fridge/freezer space

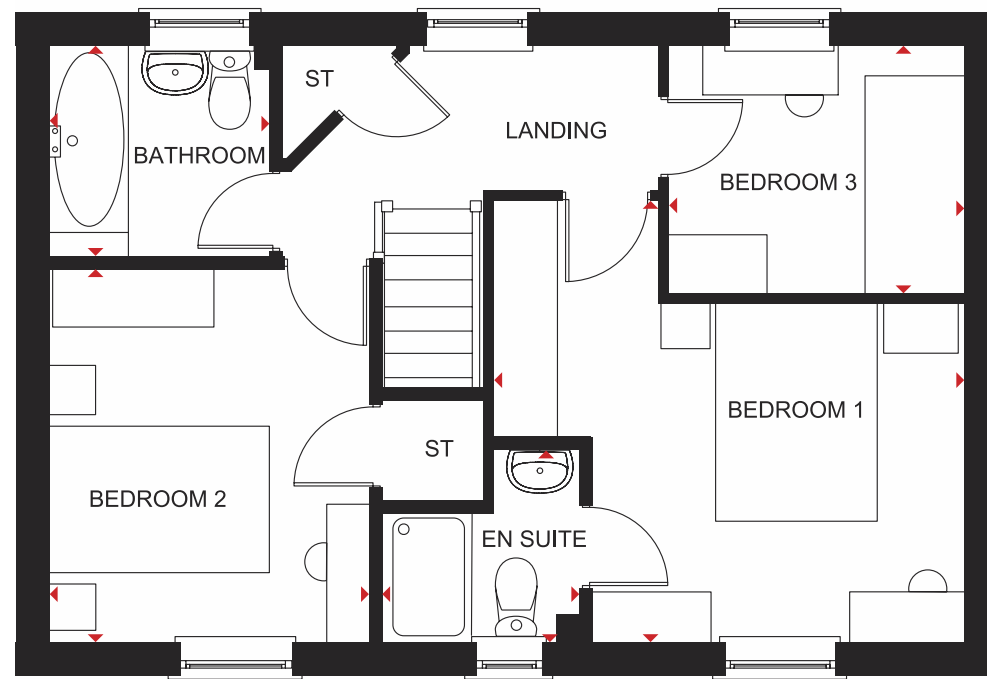
wm Washing machine space
dw Dishwasher space
td Tumble dryer space

◀▶ Dimension location



Ground Floor

Lounge	5455 x 3153 mm	17'11" x 10'4"
Kitchen/Family/		
Dining	5455 x 2917 mm	17'11" x 9'7"
Utility	1816 x 1687 mm	5'11" x 5'6"
WC	1485 x 1013 mm	4'10" x 3'4"



First Floor

Bedroom 1	4324 x 4058 mm	14'2" x 13'4"
En suite	1856 x 1771 mm	6'1" x 5'9"
Bedroom 2	3441 x 2978 mm	11'3" x 9'9"
Bedroom 3	2713 x 2265 mm	8'11" x 7'5"
Bathroom	2025 x 1925 mm	6'8" x 6'4"

All images used are for illustrative purposes only. Floor plans are intended to give a general indication of the proposed floor layout only. The dimensions are accurate to within + or - 50mm but should not be used for carpet or flooring sizes, appliance spaces or items of furniture. Please ask our Sales Adviser for details of the treatments specified for individual plots. Individual features such as windows, brick and other materials' colours may vary, as may drainage, heating and electrical layouts. All images, photographs and dimensions are not intended to form part of any contract or warranty unless specifically incorporated in writing into the contract.

We are on the New Homes Quality Code register of registered developers. "We" refers to the Barratt Developments PLC group brands including Barratt London, Barratt Homes and David Wilson Homes.

dwh.co.uk



DAVID WILSON HOMES
WHERE QUALITY LIVES

THE HADLEY

THREE BEDROOM HOME



Individual plots may vary, please speak to the Sales Adviser



The sash-style windows give this detached home a delightfully traditional look. Yet inside, the open-plan kitchen – with its dining and family areas and separate utility room – is designed very much for busy, modern living. French doors to the garden give

the whole room a bright and airy feeling. The spacious dual-aspect lounge meanwhile provides the perfect place to relax. Upstairs are two double bedrooms, the large main bedroom with en suite, a single bedroom and a family bathroom.



DAVID WILSON HOMES
WHERE QUALITY LIVES

THE HADLEY

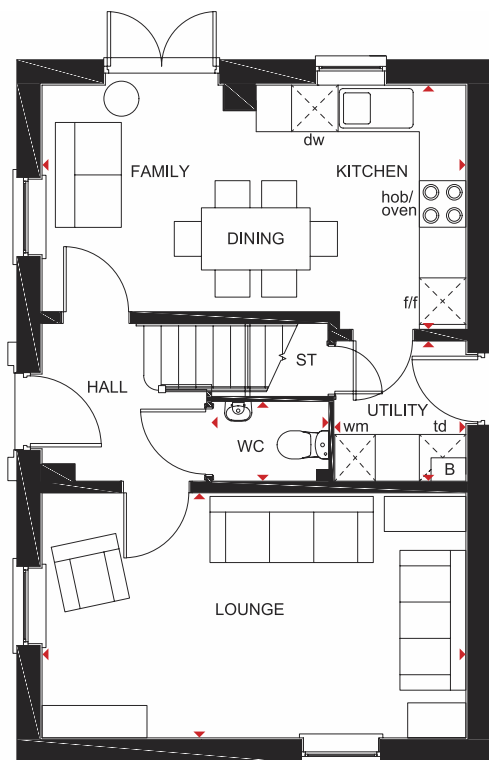
THREE BEDROOM HOME

Key

B Boiler
ST Store
BH ST Bulkhead Store

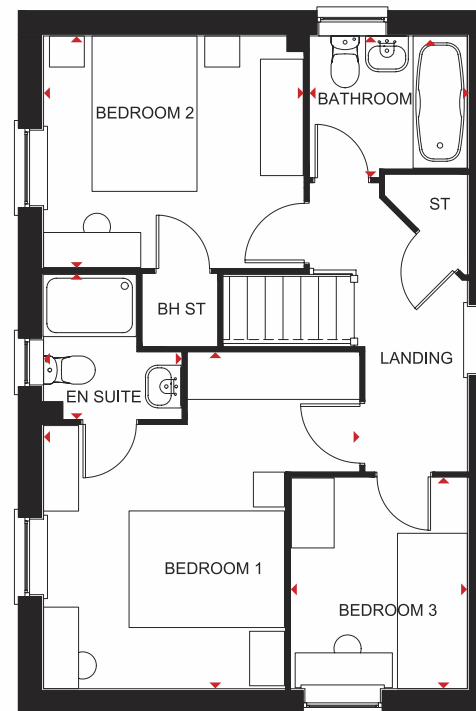
f/f Fridge/freezer space
wm Washing machine space
dw Dishwasher space

td Tumble dryer space
◀▶ Dimension location



Ground Floor

Lounge	5455 x 3153 mm	17'11" x 10'4"
Kitchen/Family/Dining	5455 x 3143 mm	17'11" x 10'4"
Utility	1804 x 1688 mm	5'11" x 5'6"
WC	1484 x 1015 mm	4'10" x 3'4"



First Floor

Bedroom 1	4324 x 4058 mm	14'2" x 13'3"
En Suite	1856 x 1771 mm	6'1" x 5'9"
Bedroom 2	3341 x 2978 mm	11'3" x 9'9"
Bedroom 3	2713 x 2265 mm	8'11" x 7'5"
Bathroom	2025 x 1811 mm	6'8" x 6'0"

All images used are for illustrative purposes. Floor plans are intended to give a general indication of the proposed floor layout only. Dimensions are accurate to within + or - 50mm but should not be used for carpet or flooring sizes, appliance spaces or items of furniture. Please ask our Sales Adviser for details of the treatments specified for individual plots. Individual features such as windows, brick and other materials may vary, as may drainage, heating and electrical layouts. Images, photographs and dimensions are not intended to form part of any contract or warranty unless specifically incorporated in writing into the contract.

We are on the New Homes Quality Code register of registered developers. "We" refers to the Barratt Developments PLC group brands including Barratt London, Barratt Homes and David Wilson Homes.

THE BLYFORD

THREE BEDROOM HOME



Individual plots may vary, please speak to the Sales Adviser



The Blyford's three bedroom home has an intelligent use of space. The bright, open-plan kitchen has French doors leading to the garden, allowing plenty of natural light, and includes a dining area. There is also an adjoining utility room. The dual-aspect lounge is the perfect place to relax and unwind. Meanwhile,

on the first floor, there are two double bedrooms – the main bedroom with en suite shower room – a single bedroom, a useful study and a family bathroom. An integral garage completes this spacious home.



DAVID WILSON HOMES

WHERE QUALITY LIVES

THE BLYFORD

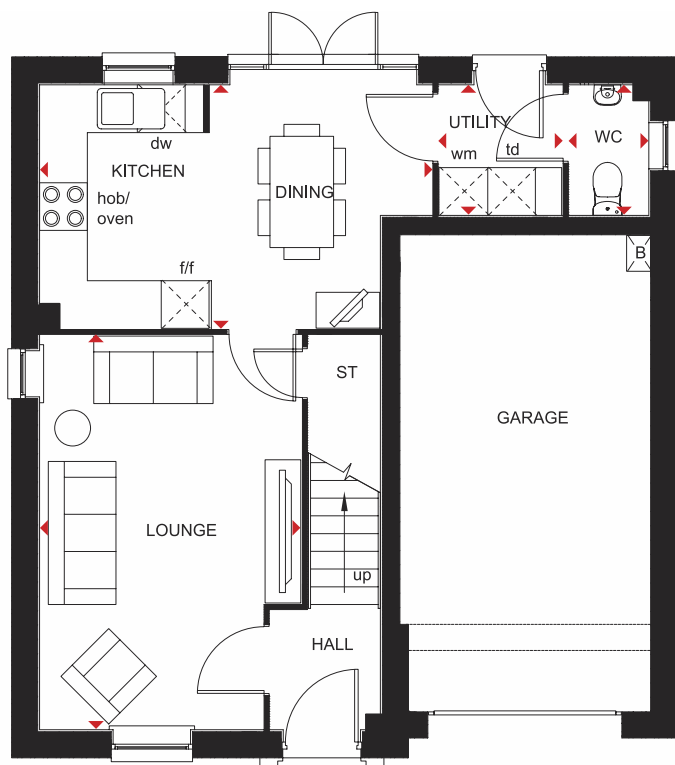
THREE BEDROOM HOME

Key

B Boiler
ST Store
BH ST Bulkhead Store

f/f Fridge/freezer space
wm Washing machine space
dw Dishwasher space

td Tumble dryer space
◀▶ Dimension location



Ground Floor

Lounge	3304 x 4970 mm	10'10" x 16'3"
Kitchen/Dining	4945 x 3075 mm	16'2" x 10'1"
WC	1000 x 1640 mm	3'3" x 5'4"
Utility	1576 x 1640 mm	5'2" x 5'4"



First Floor

Bedroom 1	3304 x 3351 mm	10'10" x 10'11"
En Suite	2303 x 1438 mm	7'6" x 4'8"
Bedroom 2	3286 x 3483 mm	10'9" x 11'5"
Bedroom 3	2504 x 2995 mm	8'8" x 9'9"
Bath	2177 x 3200 mm	7'1" x 10'6"
Study	1862 x 2191 mm	6'1" x 7'2"

All images used are for illustrative purposes only. Floor plans are intended to give a general indication of the proposed floor layout only. The dimensions are accurate to within + or - 50mm but should not be used for carpet or flooring sizes, appliance spaces or items of furniture. Please ask our Sales Adviser for details of the treatments specified for individual plots. Individual features such as windows, brick and other materials' colours may vary, as may drainage, heating and electrical layouts. All images, photographs and dimensions are not intended to form part of any contract or warranty unless specifically incorporated in writing into the contract.

We are on the New Homes Quality Code register of registered developers. "We" refers to the Barratt Developments PLC group brands including Barratt London, Barratt Homes and David Wilson Homes.

SP433324

THE INGLEBY

FOUR BEDROOM HOME



Individual plots may vary, please speak to the Sales Adviser



The sash-style windows of this family home give it a delightfully traditional feel, while inside the large open-plan kitchen with its dining and family areas is designed very much for modern living. Essential utility space is discreetly tucked away in a corner of the

kitchen and French doors give access to the rear garden. The separate lounge provides a comfortable haven where everyone can relax. Upstairs are two double bedrooms, the main bedroom with en suite, two single bedrooms and a family bathroom.



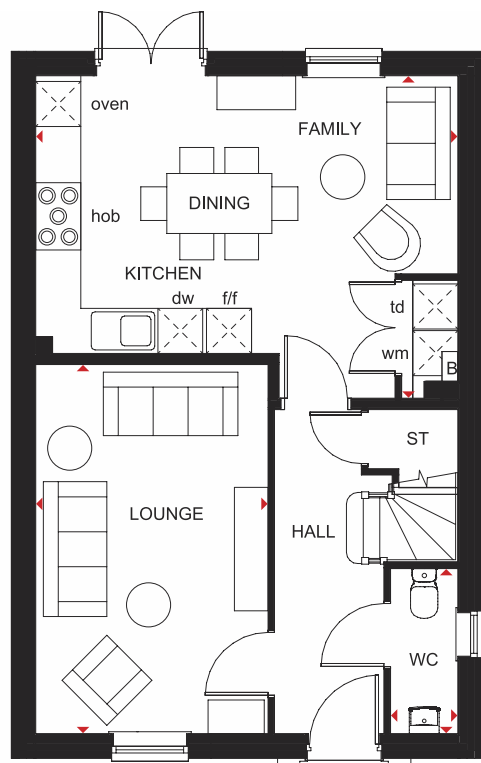
DAVID WILSON HOMES
WHERE QUALITY LIVES

THE INGLEBY

FOUR BEDROOM HOME

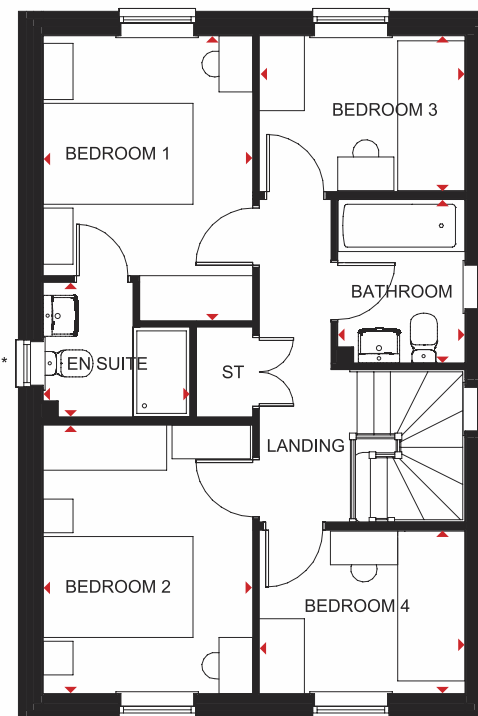
Key

B	Boiler	wm	Washing machine space	◀▶	Dimension location
ST	Store	dw	Dishwasher space		
f/f	Fridge/freezer space	td	Tumble dryer space		



Ground Floor

Lounge	4930 x 3100 mm	16'2" x 10'2"
Kitchen/Family/Dining	5635 x 4305 mm	18'6" x 14'1"
WC	2206 x 900 mm	7'3" x 2'11"



First Floor

Bedroom 1	3802 x 2800 mm	12'6" x 9'2"
En suite	1962 x 1800 mm	6'5" x 5'11"
Bedroom 2	3587 x 2800 mm	11'9" x 9'2"
Bedroom 3	2747 x 2066 mm	9'0" x 6'9"
Bedroom 4	2747 x 2172 mm	9'0" x 7'1"
Bathroom	2179 x 1700 mm	7'2" x 5'7"

*Window may be omitted on certain plots. Speak to a Sales Adviser for details on individual plots.

All images used are for illustrative purposes only. Floor plans are intended to give a general indication of the proposed floor layout only. The dimensions are accurate to within + or - 50mm but should not be used for carpet or flooring sizes, appliance spaces or items of furniture. Please ask our Sales Adviser for details of the treatments specified for individual plots. Individual features such as windows, brick and other materials' colours may vary, as may drainage, heating and electrical layouts. All images, photographs and dimensions are not intended to form part of any contract or warranty unless specifically incorporated in writing into the contract.

We are on the New Homes Quality Code register of registered developers. "We" refers to the Barratt Developments PLC group brands including Barratt London, Barratt Homes and David Wilson Homes.

THE HOLLINWOOD

FOUR BEDROOM HOME



Individual plots may vary, please speak to the Sales Adviser



Sash-style windows give The Hollinwood a delightful, traditional look, while inside it is designed very much for busy family life. An attractive glazed bay leading to the garden creates a light atmosphere in the open-plan kitchen with flexible dining and

family space. The kitchen also has an adjacent utility room. The dual-aspect lounge provides the perfect place for the whole family to relax. Upstairs are three double bedrooms, the main bedroom with en suite, a single bedroom and a family bathroom.



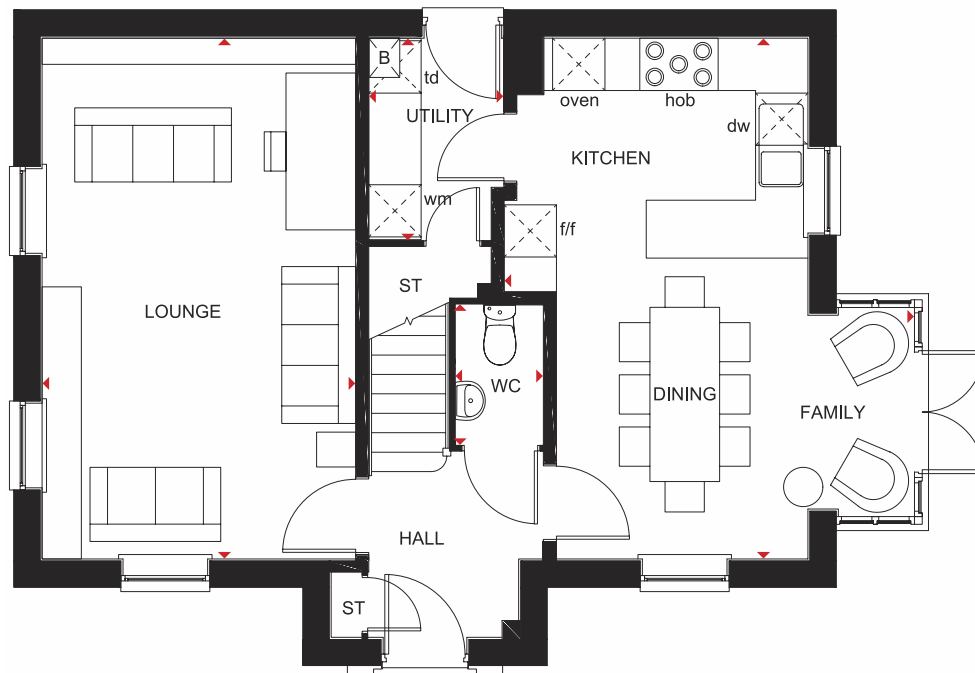
DAVID WILSON HOMES
WHERE QUALITY LIVES

THE HOLLINWOOD

FOUR BEDROOM HOME

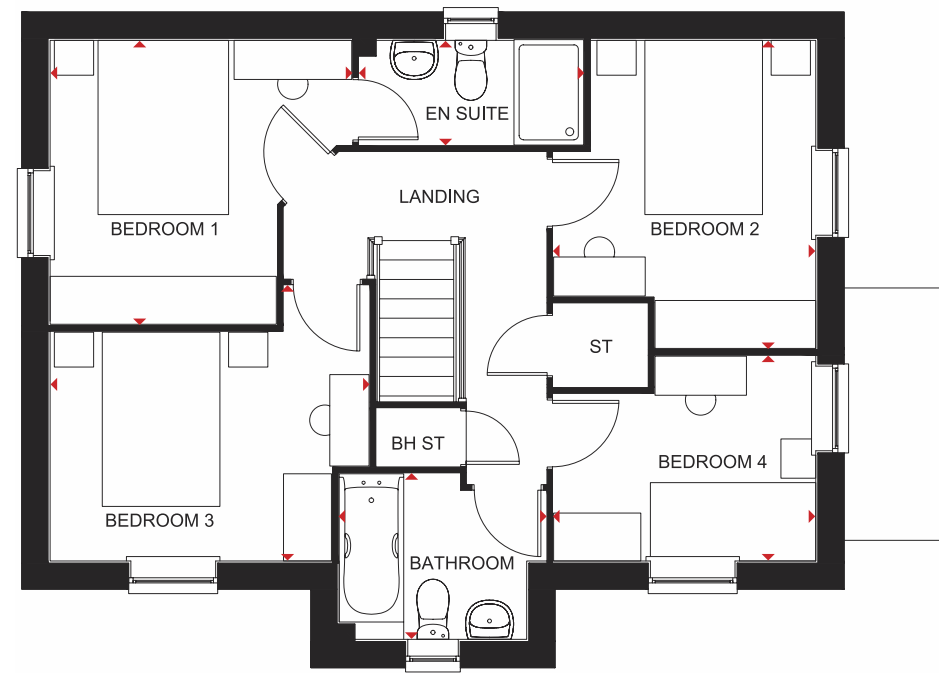
Key

B	Boiler	wm	Washing machine space	BH ST	Bulkhead store
ST	Store	dw	Dishwasher space	◀▶	Dimension location
f/f	Fridge/freezer space	td	Tumble dryer space		



Ground Floor

Lounge	3600 x 5978 mm	11'10" x 19'7"
Kitchen/Family/Dining	5978 x 4711 mm	19'7" x 15'5"
Utility	1550 x 2312 mm	5'1" x 7'7"
WC	1014 x 1600 mm	3'3" x 5'3"



First Floor

Bedroom 1	3462 x 3260 mm	11'4" x 10'8"
En suite	2574 x 1200 mm	8'5" x 4'0"
Bedroom 2	3537 x 3009 mm	11'7" x 9'10"
Bedroom 3	3661 x 3159 mm	12'0" x 10'4"
Bedroom 4	3009 x 2352 mm	9'10" x 7'9"
Bathroom	2373 x 1900 mm	7'9" x 6'3"

All images used are for illustrative purposes only. Floor plans are intended to give a general indication of the proposed floor layout only. The dimensions are accurate to within + or - 50mm but should not be used for carpet or flooring sizes, appliance spaces or items of furniture. Please ask our Sales Adviser for details of the treatments specified for individual plots. Individual features such as windows, brick and other materials' colours may vary, as may drainage, heating and electrical layouts. All images, photographs and dimensions are not intended to form part of any contract or warranty unless specifically incorporated in writing into the contract.

We are on the New Homes Quality Code register of registered developers. "We" refers to the Barratt Developments PLC group brands including Barratt London, Barratt Homes and David Wilson Homes.

THE MERIDEN

FOUR BEDROOM DETACHED HOME



Individual plots may vary, please speak to the Sales Adviser

The Meriden is a bright place to call home with its attractive bay-fronted lounge and a light-filled glazed bay in the kitchen/dining area with French doors leading to the garden. A family space in the kitchen increases flexibility for living and entertaining, while

a separate utility room adds practicality and an integral garage provides extra security. Upstairs are four double bedrooms, the generous main bedroom with en suite, and a family bathroom with shower.



DAVID WILSON HOMES

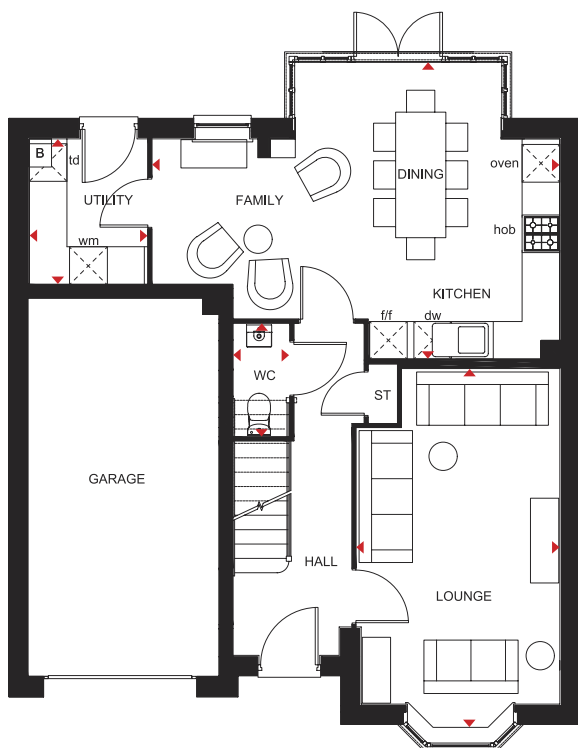
WHERE QUALITY LIVES

THE MERIDEN

FOUR BEDROOM DETACHED HOME

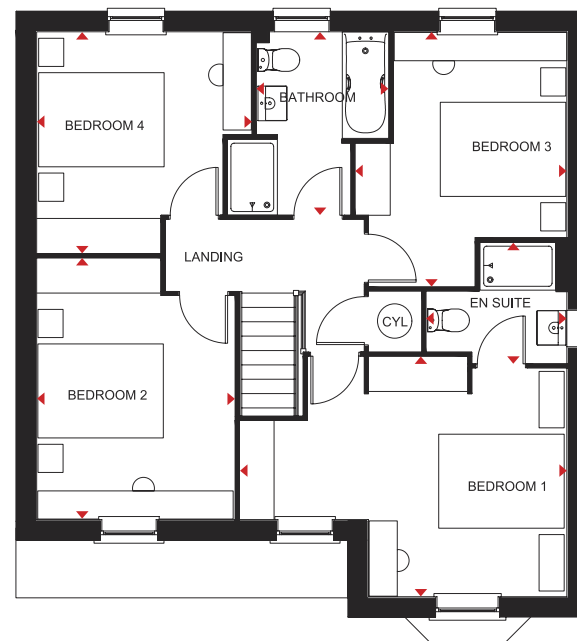
Key

B	Boiler	CYL	Cylinder	wm	Washing machine space	td	Tumble dryer space
ST	Store	f/f	Fridge/freezer space	dw	Dishwasher space	◀▶	Dimension location



Ground Floor

Lounge	5767 x 3235 mm	18'11" x 10'7"
Kitchen/Family/Dining	6486 x 4735 mm	21'3" x 15'6"
Utility	2305 x 1877 mm	7'7" x 6'2"
WC	1786 x 882 mm	5'10" x 2'11"



First Floor

Bedroom 1	5208 x 3822 mm	17'1" x 12'6"
En Suite	2235 x 1923 mm	7'4" x 6'4"
Bedroom 2	4161 x 3155 mm	13'8" x 10'4"
Bedroom 3	4056 x 3365 mm	13'3" x 11'0"
Bedroom 4	3527 x 3423 mm	11'7" x 11'3"
Bathroom	2913 x 210 mm	9'6" x 6'11"

All images used are for illustrative purposes. These and the dimensions given are illustrative for this house type and individual properties may differ. Please check with your Sales Adviser in respect of individual properties. We give maximum dimensions within each room which includes areas of fixtures and fittings including fitted furniture. These dimensions should not be used for carpet or flooring sizes, appliance spaces or items of furniture. All images, photographs and dimensions are not intended to be relied upon for, nor to form part of, any contract unless specifically incorporated in writing into the contract.

We are on the New Homes Quality Code register of registered developers. "We" refers to the Barratt Developments PLC group brands including Barratt London, Barratt Homes and David Wilson Homes.

THE EXETER

FOUR BEDROOM HOME



Individual plots may vary, please speak to the Sales Adviser



The Exeter's design reflects an intelligent use of space. A full-height glazed bay in the luxury fitted kitchen has French doors to the garden, allowing in plenty of natural light. The bright, open-plan kitchen includes dining and family areas and has an adjoining utility room. An attractive bay window makes the separate lounge

a bright and pleasant place to relax. Meanwhile, on the first floor there are four good-sized double bedrooms, the main bedroom with en suite, and a large family bathroom. An integral garage completes this spacious family home.



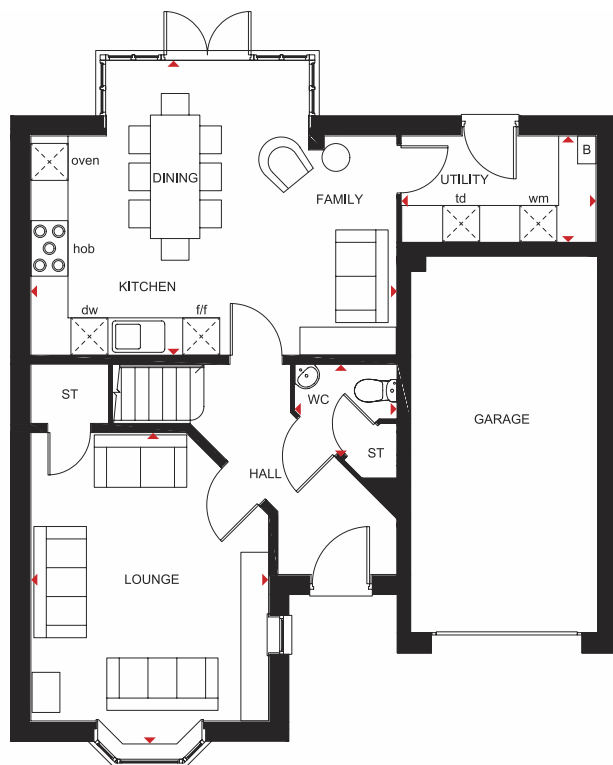
DAVID WILSON HOMES
WHERE QUALITY LIVES

THE EXETER

FOUR BEDROOM HOME

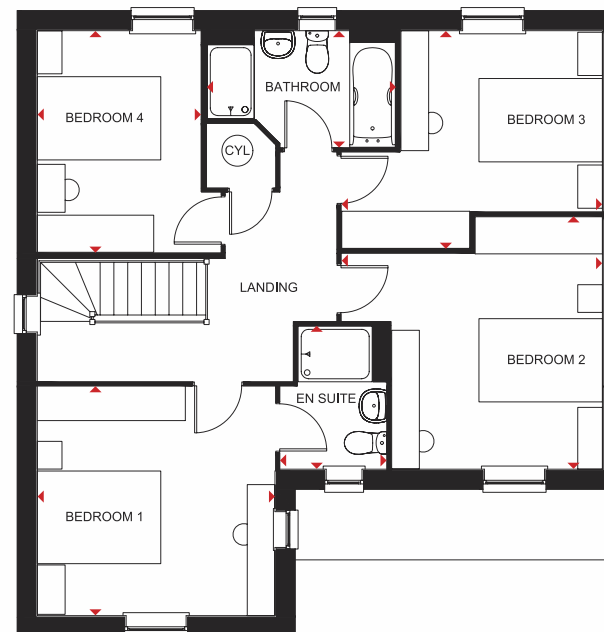
Key

B	Boiler	f/f	Fridge/freezer space	td	Tumble dryer space
ST	Store	wm	Washing machine space	◀▶	Dimension location
CYL	Cylinder	dw	Dishwasher space		



Ground Floor

Lounge	5080 x 3850 mm	16'8" x 12'8"
Kitchen/Family/Dining	5917 x 4822 mm	19'5" x 15'9"
Utility	3148 x 1725 mm	10'4" x 5'8"
WC	1650 x 1484 mm	5'5" x 4'10"



First Floor

Bedroom 1	3850 x 3711 mm	12'8" x 12'2"
En suite	2315 x 1711 mm	7'7" x 5'7"
Bedroom 2	4208 x 4088 mm	13'10" x 13'5"
Bedroom 3	4208 x 3525 mm	13'10" x 11'7"
Bedroom 4	3589 x 2634 mm	11'9" x 8'8"
Bathroom	3046 x 1886 mm	10'0" x 6'2"

All images used are for illustrative purposes. These and the dimensions given are illustrative for this house type and individual properties may differ. Please check with your Sales Adviser in respect of individual properties. We give maximum dimensions within each room which includes areas of fixtures and fittings including fitted furniture. These dimensions should not be used for carpet or flooring sizes, appliance spaces or items of furniture. All images, photographs and dimensions are not intended to be relied upon for, nor to form part of, any contract unless specifically incorporated in writing into the contract. SP433321

We are on the New Homes Quality Code register of registered developers. "We" refers to the Barratt Developments PLC group brands including Barratt London, Barratt Homes and David Wilson Homes.

THE AVONDALE

FOUR BEDROOM DETACHED HOME



Individual plots may vary, please speak to the Sales Adviser



This tasteful, double-fronted, detached home with elegant sash-style windows, provides plenty of flexible living space. The Avondale's generous open-plan kitchen has a dedicated dining area with an attractive bay window, and a separate utility room.

A large, triple-aspect lounge leads to the garden via French doors and a separate study provides quiet space to work. Upstairs are four double bedrooms, the main bedroom with en suite, and a family bathroom with bath and shower.



DAVID WILSON HOMES

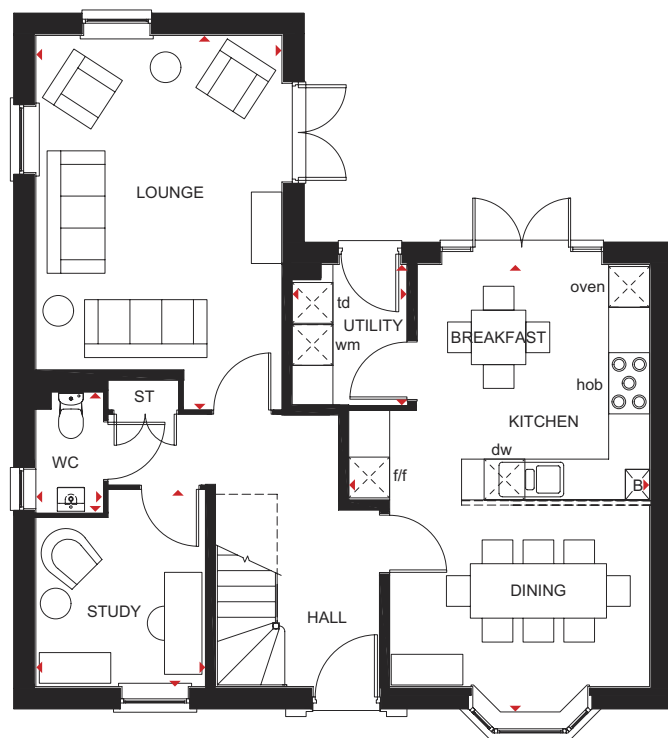
WHERE QUALITY LIVES

THE AVONDALE

FOUR BEDROOM HOME

Key

B	Boiler	CYL	Cylinder	wm	Washing machine space	td	Tumble dryer space
ST	Store	f/f	Fridge/freezer space	dw	Dishwasher space	◀▶	Dimension location



Ground Floor

Lounge	5490 x 3615 mm	18'0" x 11'10"
Kitchen/ Breakfast/Dining	6600 x 4418 mm	21'7" x 14'6"
Utility	2062 x 1688 mm	6'9" x 5'6"
Study	2885 x 2490 mm	9'5" x 8'2"
WC	1768 x 983 mm	5'10" x 3'3"



First Floor

Bedroom 1	5587 x 3615 mm	18'4" x 11'10"
En suite	2222 x 1435 mm	7'3" x 4'8"
Bedroom 2	5227 x 2800 mm	17'1" x 9'2"
Bedroom 3	3566 x 3316 mm	11'8" x 10'10"
Bedroom 4	3893 x 2550 mm	12'9" x 8'4"
Bathroom	2871 x 1929 mm	9'5" x 6'4"

All images used are for illustrative purposes. These and the dimensions given are illustrative for this house type and individual properties may differ. Please check with your Sales Adviser in respect of individual properties. We give maximum dimensions within each room which includes areas of fixtures and fittings including fitted furniture. These dimensions should not be used for carpet or flooring sizes, appliance spaces or items of furniture. All images, photographs and dimensions are not intended to be relied upon for, nor to form part of, any contract unless specifically incorporated in writing into the contract.

We are on the New Homes Quality Code register of registered developers. "We" refers to the Barratt Developments PLC group brands including Barratt London, Barratt Homes and David Wilson Homes.

THE HOLDEN

FOUR BEDROOM HOME



Individual plots may vary, please speak to the Sales Adviser



This stylish four bedroom detached home has no shortage of space. The bright, modern kitchen has been designed with integrated dining and family areas, full-height glazed bay with French doors leading to the garden and an adjoining utility room, making it the true heart of the home. A generously proportioned lounge with

elegant bay window provides a perfect place to relax while a study offers a handy work space. Upstairs, a large main bedroom with en suite shower room is located at the front of the house and there are two further double bedrooms, a single bedroom and a family bathroom with bath and separate shower.



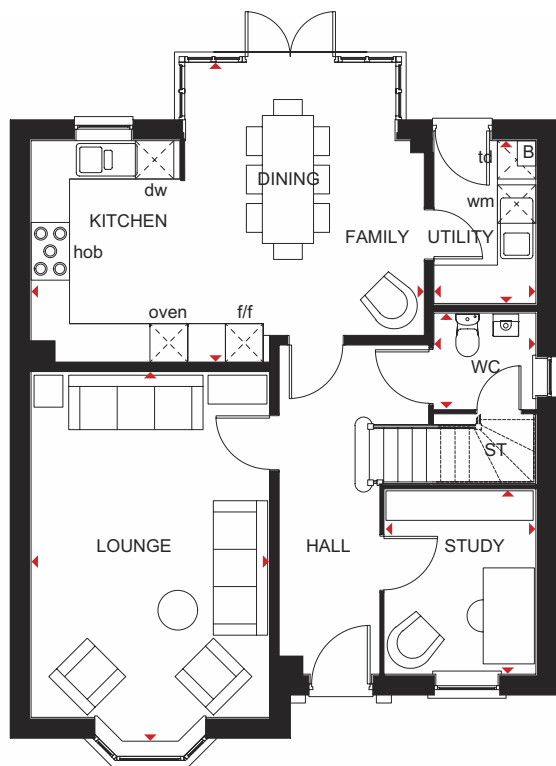
DAVID WILSON HOMES
WHERE QUALITY LIVES

THE HOLDEN

FOUR BEDROOM HOME

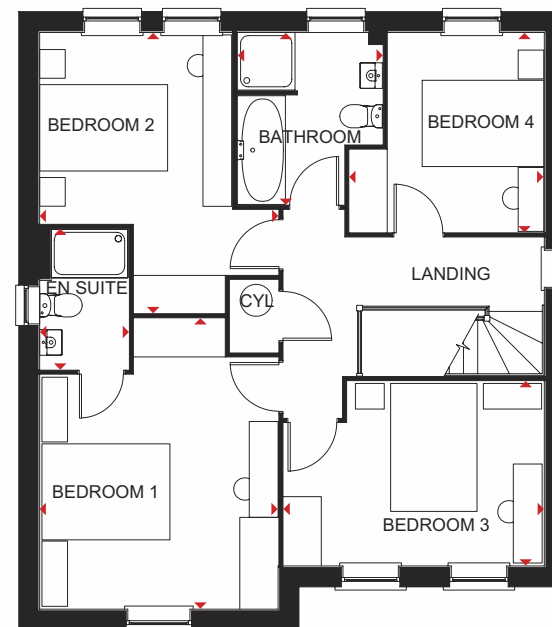
Key

B	Boiler	f/f	Fridge/freezer space	td	Tumble dryer space
ST	Store	wm	Washing machine space	◀▶	Dimension location
CYL	Cylinder	dw	Dishwasher space		



Ground Floor

Lounge	5802 x 3728 mm	19'0" x 12'3"
Kitchen/Family/Dining	6147 x 4685 mm	20'2" x 15'4"
Study	2886 x 2361 mm	9'6" x 7'9"
Utility	2545 x 1593 mm	8'4" x 5'3"
WC	1498 x 1593 mm	4'11" x 5'3"



First Floor

Bedroom 1	4543 x 3728 mm	14'11" x 12'3"
En suite	2190 x 1390 mm	7'2" x 4'7"
Bedroom 2	4384 x 3728 mm	14'4" x 12'3"
Bedroom 3	4073 x 2886 mm	13'4" x 9'5"
Bedroom 4	3120 x 3018 mm	10'3" x 9'11"
Bathroom	2689 x 2266 mm	8'10" x 7'5"

All images used are for illustrative purposes only. Floor plans are intended to give a general indication of the proposed floor layout only. The dimensions are accurate to within + or - 50mm but should not be used for carpet or flooring sizes, appliance spaces or items of furniture. Please ask our Sales Adviser for details of the treatments specified for individual plots. Individual features such as windows, brick and other materials' colours may vary, as may drainage, heating and electrical layouts. All images, photographs and dimensions are not intended to form part of any contract or warranty unless specifically incorporated in writing into the contract.

We are on the New Homes Quality Code register of registered developers. "We" refers to the Barratt Developments PLC group brands including Barratt London, Barratt Homes and David Wilson Homes.

DAVID WILSON HOMES

WHERE QUALITY LIVES

dwh.co.uk