



HEMINS PLACE
AT KINGSMERE

EXPERIENCE

— THE DAVID WILSON DIFFERENCE —

At David Wilson Homes we have been building quality homes across the UK for over 40 years. Our reputation is founded on our commitment to provide traditional homes in desirable locations built to a superb specification.

We* are delighted to have received over 90% homeowner recommendation since 2010. This Home Builders Federation accolade, recognises our commitment to bring you beautiful new homes.

Our collection of beautiful homes offer a range of spacious bedroom designs, located in highly desirable locations.

We would encourage you to come and experience the David Wilson Difference and we look forward to seeing you at one of our many developments.



DAVID WILSON HOMES

WHERE QUALITY LIVES



HEMINS PLACE AT KINGSMERE PHASE 2

HEATON ROAD (OFF VENDEE DRIVE), BICESTER,
OXFORDSHIRE, OX26 1FQ

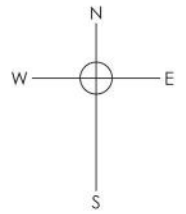
	THE WILFORD	2 bedroom home
	THE WINCHAM	2 bedroom home
	THE FAIRWAY	3 bedroom home
	THE HADLEY	3 bedroom home
	THE ARCHFORD	3 bedroom home
	THE SALTWAY	3 bedroom home
	THE MIDDLETON*	3 bedroom home
	THE OXFORD*	3 bedroom home
	THE KENNEDY*	3 bedroom home
	THE BLOXHAM	3 bedroom home
	THE ASHINGTON	3 bedroom home
	THE BRADGATE	4 bedroom home
	THE AVONDALE	4 bedroom home
	THE HOLDEN	4 bedroom home
	THE HERTFORD	4 bedroom home
	THE HERTFORD PLUS	4 bedroom home
	THE CHELWORTH	4 bedroom home

* Sage Housing

Bedroom over carport

V Visitors' parking

- For Sale
- Reserved
- Exchanged
- Completed



dwh.co.uk



DAVID WILSON HOMES
WHERE QUALITY LIVES

THE BRADGATE

FOUR BEDROOM DETACHED HOME



Individual plots may vary, please speak to the Sales Adviser

A home to suit all the family, the Bradgate offers a combination of flexible communal areas and dedicated quiet space. An expansive open-plan kitchen with separate utility has dining and family areas leading to the garden – and extended living space in good weather – via a beautiful walk-in glazed bay with French

doors. A separate study and a lounge provide room to work and relax in. Four double bedrooms upstairs, the spacious main bedroom with en suite, ensures everyone has space of their own. A family bathroom completes this truly superb family home.



DAVID WILSON HOMES

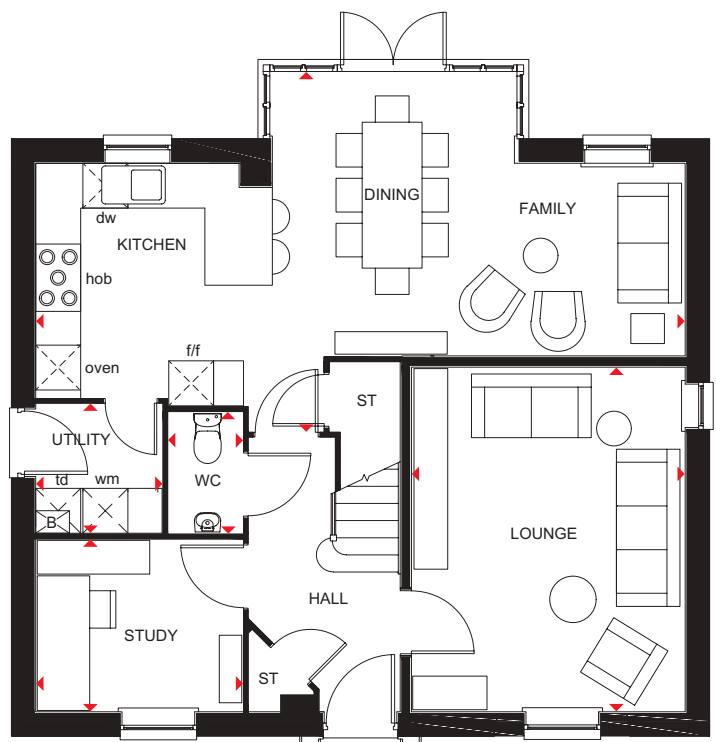
WHERE QUALITY LIVES

THE BRADGATE

FOUR BEDROOM DETACHED HOME

Key

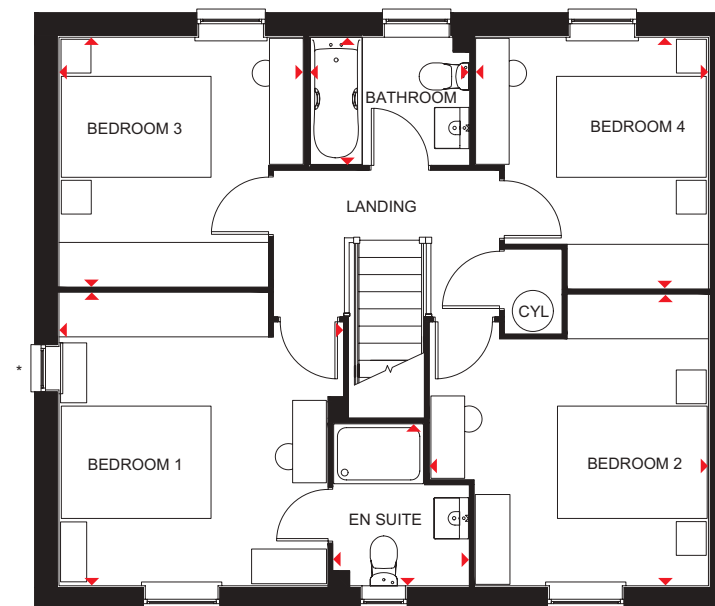
B	Boiler	f/f	Fridge/freezer space	td	Tumble dryer space
ST	Store	wm	Washing machine space	◀▶	Dimension location
CYL	Cylinder	dw	Dishwasher space		



Ground Floor

Lounge	3658 x 4602 mm	12'0" x 15'1"
Kitchen/Dining/Family	8677 x 4807 mm	28'5" x 15'9"
Study	2762 x 2295 mm	9'1" x 7'6"
Utility	1687 x 1724 mm	5'6" x 5'7"
WC	1614 x 986 mm	5'4" x 3'2"

*Window may be omitted on certain plots. Speak to a Sales Adviser for details on individual plots.



First Floor

Bedroom 1	3910 x 3791 mm	12'9" x 12'5"
En suite	2162 x 1799 mm	7'1" x 5'10"
Bedroom 2	3720 x 3885 mm	12'2" x 12'9"
Bedroom 3	3329 x 3263 mm	10'11" x 10'8"
Bedroom 4	3353 x 3112 mm	11'0" x 10'2"
Bathroom	2124 x 1700 mm	6'11" x 5'7"

*Window may be omitted on certain plots. Speak to a Sales Adviser for details on individual plots.

We are on the New Homes Quality Code register of registered developers. "We" refers to the Barratt Developments PLC group brands including Barratt London, Barratt Homes and David Wilson Homes. All images used are for illustrative purposes. These and the dimensions given are illustrative for this house type and individual properties may differ. Please check with your Sales Adviser in respect of individual properties. We give maximum dimensions within each room which includes areas of fixtures and fittings including fitted furniture. These dimensions should not be used for carpet or flooring sizes, appliance spaces or items of furniture. All images, photographs and dimensions are not intended to be relied upon for, nor to form part of, any contract unless specifically incorporated in writing into the contract.

BDW01919/OCT22

THE AVONDALE

FOUR BEDROOM HOME



Individual plots may vary, please speak to the Sales Adviser

This tasteful, double-fronted, detached home, with elegant sash-style windows, provides plenty of flexible living space. The Avondale's generous open-plan kitchen has a dedicated dining area with an attractive bay window, and a separate

utility room. A large, triple-aspect lounge leads to the garden via French doors and a separate study provides quiet space to work. Upstairs are four double bedrooms, the main with en suite, and a family bathroom with bath and shower.



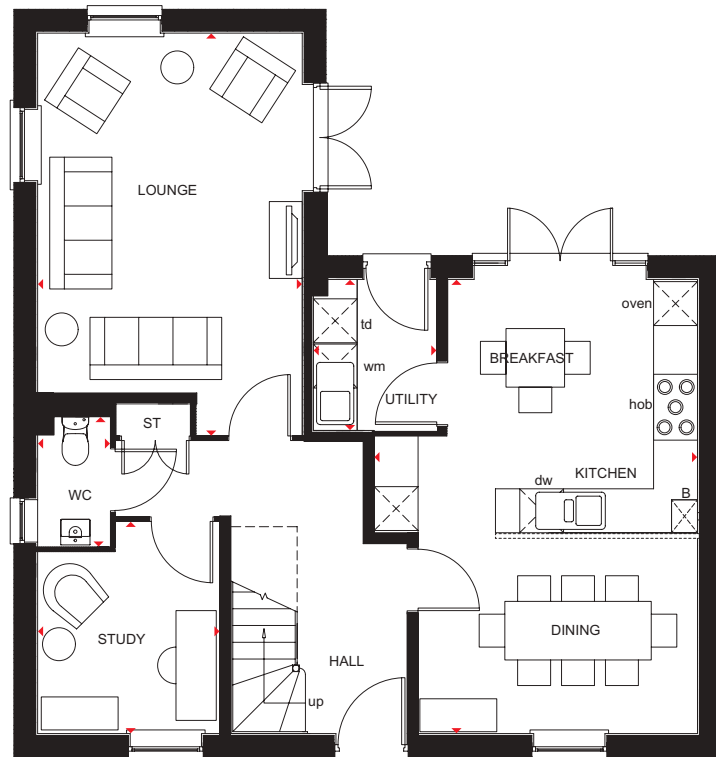
DAVID WILSON HOMES
WHERE QUALITY LIVES

THE AVONDALE

FOUR BEDROOM HOME

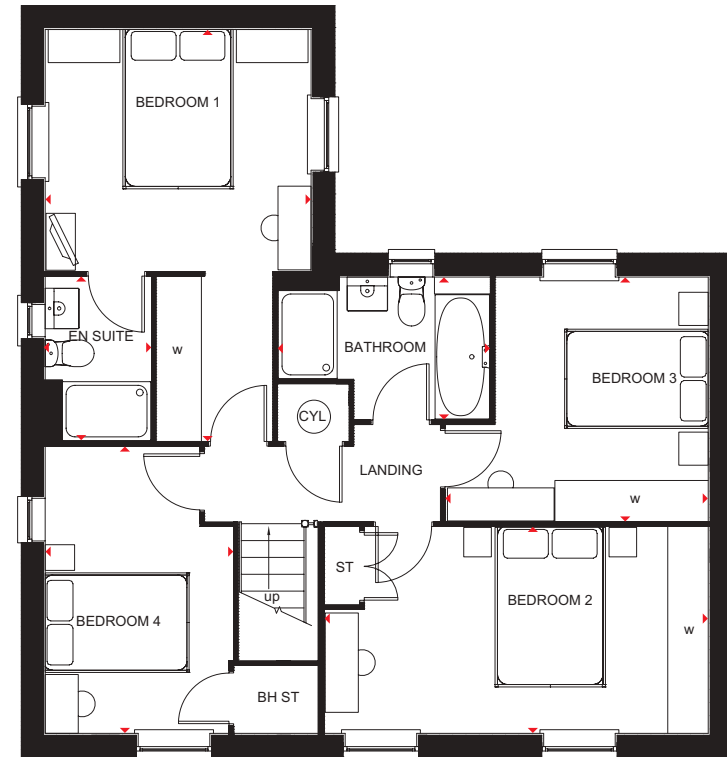
Key

B	Boiler	f/f	Fridge/freezer space	td	Tumble dryer space
ST	Store	wm	Washing machine space	◀▶	Dimension location
CYL	Cylinder	dw	Dishwasher space		



Ground Floor

Lounge	5490 x 3615 mm	18'0" x 11'10"
Kitchen/Dining	6600 x 4550 mm	21'7" x 14'11"
Utility	2164 x 1687 mm	7'7" x 5'6"
Study	2885 x 2490 mm	9'5" x 8'2"
WC	1793 x 963 mm	5'10" x 3'1"



First Floor

Bedroom 1	5720 x 3615 mm	18'9" x 11'10"
En suite	2151 x 1435 mm	7'0" x 4'8"
Bedroom 2	5227 x 2800 mm	17'1" x 9'2"
Bedroom 3	3566 x 3316 mm	11'8" x 10'10"
Bedroom 4	4376 x 2550 mm	14'4" x 8'4"
Bathroom	2871 x 1929 mm	9'5" x 6'4"

We are on the New Homes Quality Code register of registered developers. "We" refers to the Barratt Developments PLC group brands including Barratt London, Barratt Homes and David Wilson Homes. All images used are for illustrative purposes. These and the dimensions given are illustrative for this house type and individual properties may differ. Please check with your Sales Adviser in respect of individual properties. We give maximum dimensions within each room which includes areas of fixtures and fittings including fitted furniture. These dimensions should not be used for carpet or flooring sizes, appliance spaces or items of furniture. All images, photographs and dimensions are not intended to be relied upon for, nor to form part of, any contract unless specifically incorporated in writing into the contract.

BDW01919/OCT22

THE HOLDEN

FOUR BEDROOM DETACHED HOME



Individual plots may vary, speak to a Sales Adviser for more information.



Casement style windows give The Holden a charming, traditional look, yet inside it is designed very much for modern family living. A beautiful glazed bay leading to the garden makes the open-plan kitchen, family and dining areas exceptionally bright and

airy. A separate utility room also has access to the garden, while a large lounge and a separate study provide room to relax and work. Upstairs are four double bedrooms, the main bedroom with en suite, and a family bathroom with shower.



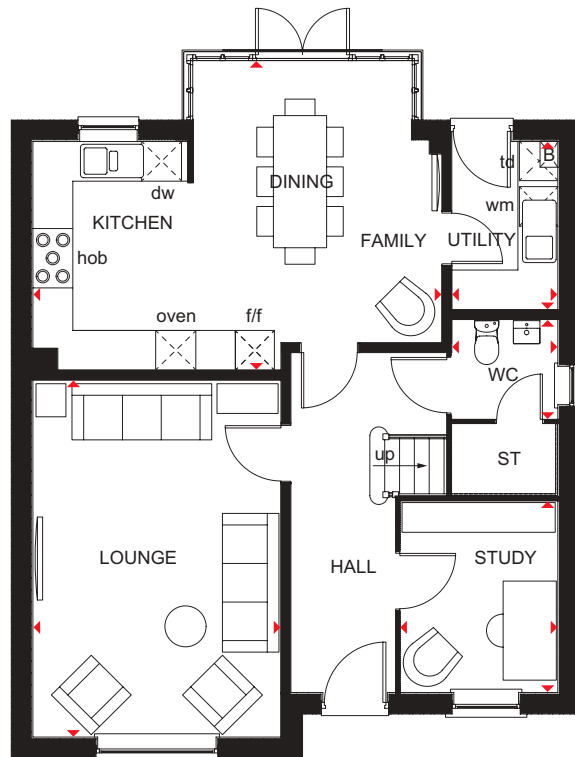
DAVID WILSON HOMES
WHERE QUALITY LIVES

THE HOLDEN

FOUR BEDROOM DETACHED HOME

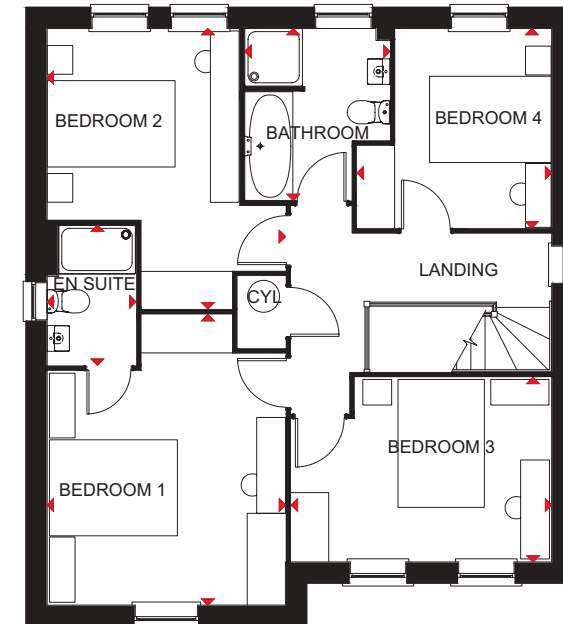
Key

B	Boiler	f/f	Fridge/freezer space	td	Tumble dryer space
ST	Store	wm	Washing machine space	◀▶	Dimension location
CYL	Cylinder	dw	Dishwasher space		



Ground Floor

Lounge	5802 x 3728 mm	19'0" x 12'3"
Kitchen/Family/Dining	6147 x 4685 mm	20'2" x 15'4"
Study	2886 x 2361 mm	9'6" x 7'9"
Utility	2545 x 1593 mm	8'4" x 5'3"
WC	1498 x 1593 mm	4'11" x 5'3"



First Floor

Bedroom 1	4543 x 3728 mm	14'11" x 12'3"
En suite	2190 x 1390 mm	7'2" x 4'7"
Bedroom 2	4384 x 3728 mm	14'4" x 12'3"
Bedroom 3	4073 x 2886 mm	13'4" x 9'5"
Bedroom 4	3120 x 3043 mm	10'3" x 10'0"
Bathroom	2689 x 2266 mm	8'10" x 7'5"

We are on the New Homes Quality Code register of registered developers. "We" refers to the Barratt Developments PLC group brands including Barratt London, Barratt Homes and David Wilson Homes. All images used are for illustrative purposes. These and the dimensions given are illustrative for this house type and individual properties may differ. Please check with your Sales Adviser in respect of individual properties. We give maximum dimensions within each room which includes areas of fixtures and fittings including fitted furniture. These dimensions should not be used for carpet or flooring sizes, appliance spaces or items of furniture. All images, photographs and dimensions are not intended to be relied upon for, nor to form part of, any contract unless specifically incorporated in writing into the contract. BDW01919/OCT22

YOUR BEAUTIFUL

NEW HOME COMES WITH PEACE OF MIND

David Wilson Homes has been crafting beautiful new homes since 1958. Our decades of experience and unrelenting commitment to excellence means that over 90% of our homeowners would recommend us to a friend, which is why we've been awarded 5 Stars by the Home Builders Federation every year since 2010. What's more, our homes come with an NHBC Buildmark Warranty which gives you a 10 year structural warranty and a 2 year fixtures and fittings warranty** as standard. You're always safe in the knowledge that you can buy one of our new homes with confidence.

WHAT DOES YOUR WARRANTY COVER?

- Central heating system plus any fires
- Hot and cold plumbing system
- Appliances
- Kitchen units
- Electrical system
- Sanitary ware taps and shower doors
- Windows
- External and interiors doors
- Ironmongery
- Renewable energy installation (if fitted)
- Internal/external drainage system
- Boundary brick walls
- Driveway
- 24-hour emergency cover for 2 years
- An NHBC 10 year Buildmark Warranty means we have complied with the NHBC Standards which set out the technical requirements for design, materials and workmanship in new home construction. This is just one of the added benefits of buying a new home.

WARRANTY EXCLUSIONS

While your warranty includes most elements, certain aspects cannot be covered including:

- Garden landscaping
- Fences
- Wear and tear
- Your own alterations
- Registered Social Landlord Homes
- Carpets and floor coverings
- Failure to maintain
- Wilful damage



***"We" and "us" refer to the Barratt Developments PLC Group brands. **First 2 years covered by Builder Warranty & NHBC Guarantee or similar. Years 3-10 covered by NHBC insurance or similar. Full exclusions and limitations can be found on the NHBC website. Available on virtually all of our developments. Images may include optional upgrades at additional cost. All information in this document is correct to the best of our knowledge at the time of going to print.

DAVID WILSON HOMES

WHERE QUALITY LIVES

dwh.co.uk or call **0333 355 8479**

If your fixed line or mobile service has inclusive minutes to 01/02 numbers, then calls to 03 are counted as part of this inclusive call volume. Non-BT customers and mobile phone users should contact their service providers for information about the cost of calls.