

PENTREF LLEWELYN

LLEWELYN ROAD, PENLLERGAER, SWANSEA SA4 9BB



A DEVELOPMENT OF 3 & 4 BEDROOM HOMES



BARRATT
— HOMES —

PENTREF LLEWELYN

DEVELOPMENT LAYOUT

KEY

- ROSEBERRY 2 bedroom home
- ELLERTON 3 bedroom home
- MORESBY 3 bedroom home
- BUCHANAN 3 bedroom home
- ENNERDALE 3 bedroom home
- MATLOCK 3 bedroom home
- BEWDLEY 3 bedroom home
- KINGSVILLE 4 bedroom home
- KENNISHAM 3 bedroom home
- HEMSWORTH 4 bedroom home
- BRENTFORD 3 bedroom home
- ALDERNEY 4 bedroom home
- HESKETH 4 bedroom home
- RADLEIGH 4 bedroom home
- AFFORDABLE HOUSING
- ★ Sales Office & Show Homes

- BCP Bin Collection Point
- V Visitor Parking
- S/S Sub Station



SUSTAINABILITY FEATURES

- 
Grassland
- 
New tree line
- 
Mature tree line
- 
Informal hoggin path
- 
Hedge

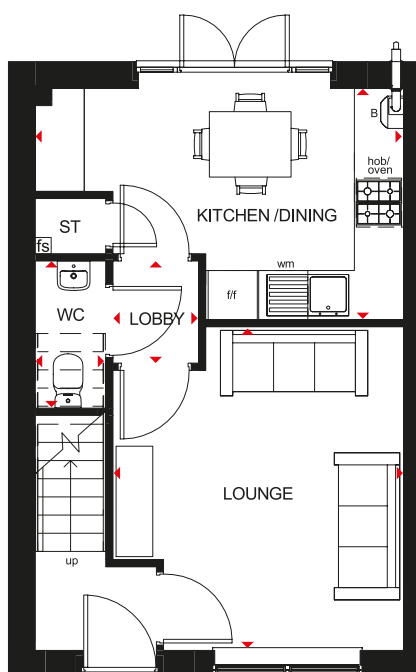
THIS DEVELOPMENT ALSO FEATURES

- 
Bat boxes
- 
Swift boxes
- 
Hedgehog highway

ROSEBERRY

2 BEDROOM SEMI-DETACHED OR DETACHED HOME

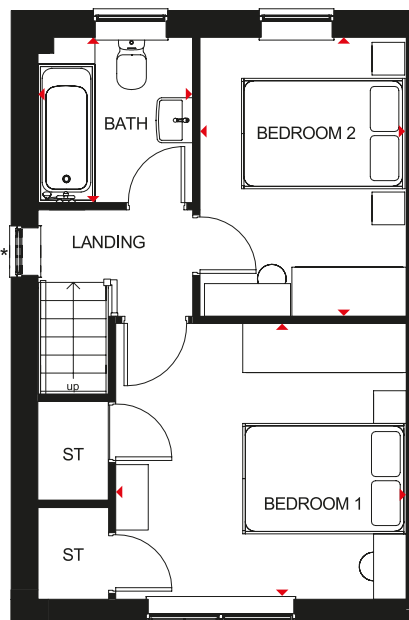
- Light fills this home through oversized windows, giving it a bright and airy feeling
- Downstairs has a fitted kitchen with dining area and French doors that lead onto the rear garden, a separate lounge, storage and a cloakroom
- Upstairs are two double-sized bedrooms and a bathroom. The larger bedroom has plenty of built-in storage space



Ground Floor

| | | |
|----------------|----------------|----------------|
| Lounge | 3507 x 3958 mm | 11'6" x 12'12" |
| Kitchen/Dining | 4505 x 2828 mm | 14'9" x 9'3" |
| WC | 863 x 1800 mm | 2'10" x 5'11" |
| Lobby | 1233 x 999 mm | 4'1" x 3'3" |

[Approximate dimensions]



First Floor

| | | |
|-----------|----------------|---------------|
| Bedroom 1 | 3507 x 3373 mm | 11'6" x 11'1" |
| Bedroom 2 | 2524 x 3413 mm | 8'3" x 11'2" |
| Bathroom | 1893 x 0000 mm | 6'3" x 6'8" |

[Approximate dimensions]

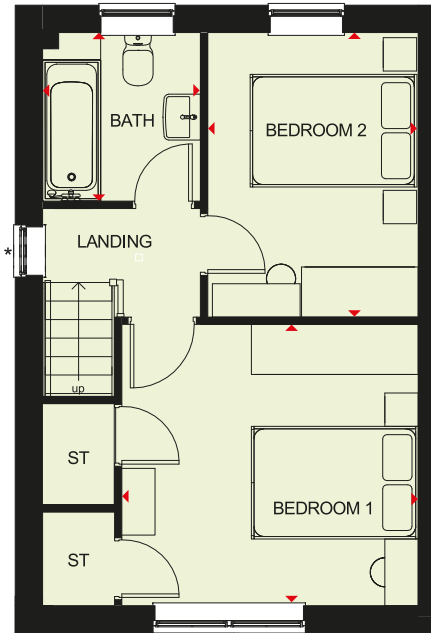
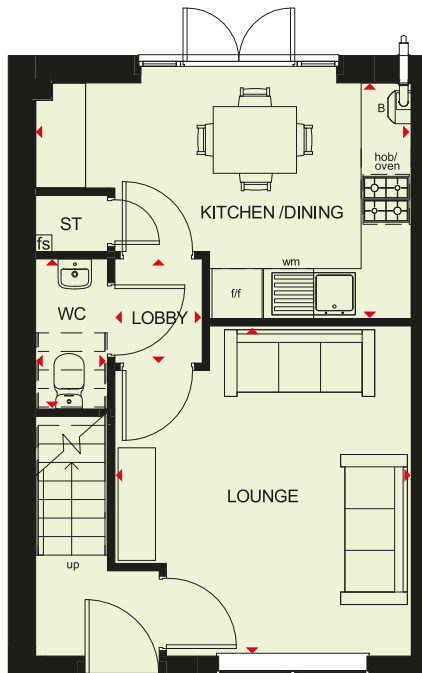
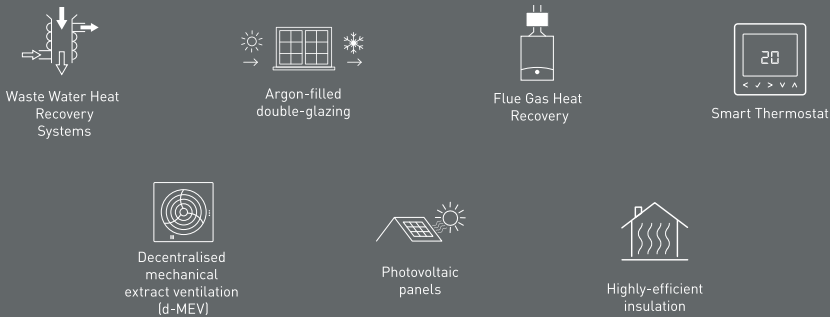
* Window may be omitted on certain plots. Speak to a Sales Adviser for details on individual plots

| | | | | | | |
|------------|----|--------|-----|-----------------------|----|--------------------|
| KEY | B | Boiler | wm | Washing machine space | fs | Fire Sprinkler |
| | ST | Store | f/f | Fridge/freezer space | ◀▶ | Dimension location |



ROSEBERRY

2 BEDROOM SEMI-DETACHED OR DETACHED HOME



Ground Floor

| | | |
|----------------|----------------|----------------|
| Lounge | 3507 x 3958 mm | 11'6" x 12'12" |
| Kitchen/Dining | 4505 x 2828 mm | 14'9" x 9'3" |
| WC | 863 x 1800 mm | 2'10" x 5'11" |
| Lobby | 1233 x 999 mm | 4'1" x 3'3" |

[Approximate dimensions]

First Floor

| | | |
|-----------|----------------|---------------|
| Bedroom 1 | 3507 x 3373 mm | 11'6" x 11'1" |
| Bedroom 2 | 2524 x 3413 mm | 8'3" x 11'2" |
| Bathroom | 1893 x 0000 mm | 6'3" x 6'8" |

[Approximate dimensions]

* Window may be omitted on certain plots. Speak to a Sales Adviser for details on individual plots

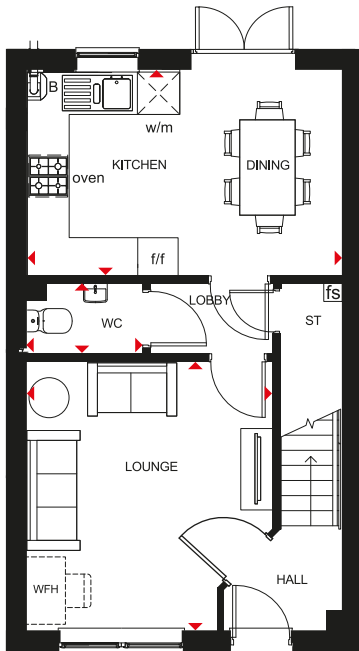
| | | | | | | |
|------------|----|--------|-----|-----------------------|----|--------------------|
| KEY | B | Boiler | wm | Washing machine space | fs | Fire Sprinkler |
| | ST | Store | f/f | Fridge/freezer space | ◀▶ | Dimension location |



ELLERTON

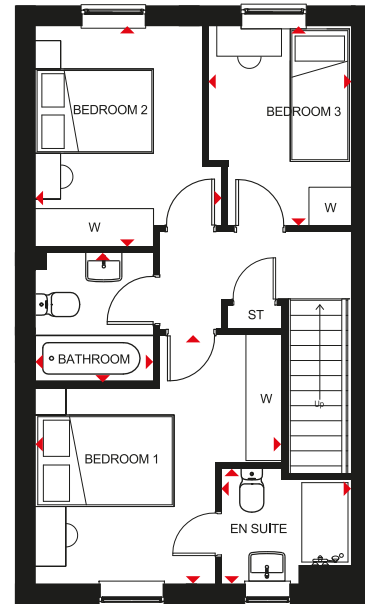
3 BEDROOM SEMI-DETACHED HOME

- Bright, practical home, ideal for modern family living
- Large, open-plan kitchen with dining space includes French doors leading to the rear garden
- Good-sized lounge for all the family to relax in
- Upstairs, the main bedroom has an en suite shower room, and there is a further double bedroom, a single bedroom and a family bathroom



Ground Floor

| | | |
|----------------|-------------------|------------------|
| Lounge | 3605 mm x 3972 mm | 11' 10" x 13' 0" |
| Kitchen/Dining | 4598 mm x 3048 mm | 15' 1" x 10' 0" |
| WC | 1702 mm x 1050 mm | 5' 7" x 3' 5" |



First Floor

| | | |
|-----------|-------------------|------------------|
| Bedroom 1 | 3605 mm x 3688 mm | 11' 10" x 12' 1" |
| En Suite | 1918 mm x 1716 mm | 6' 4" x 5' 8" |
| Bedroom 2 | 2708 mm x 3250 mm | 8' 11" x 10' 8" |
| Bedroom 3 | 2109 mm x 2932 mm | 6' 11" x 9' 7" |
| Bathroom | 1703 mm x 1917 mm | 5' 7" x 6' 3" |

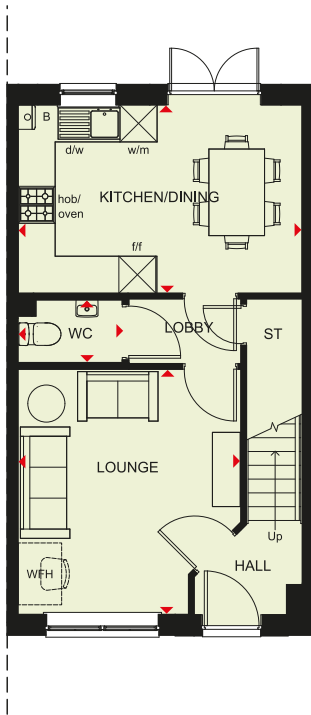
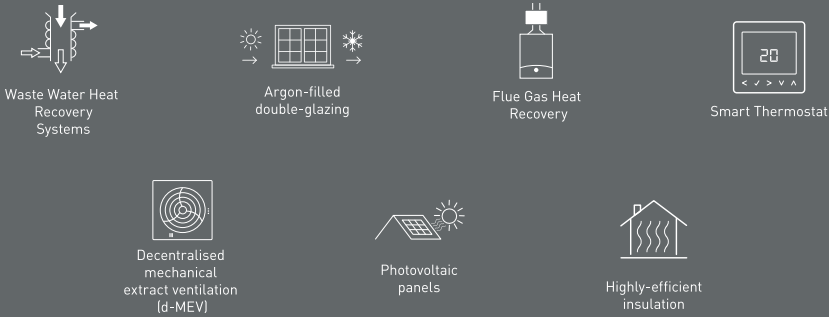
| | | | |
|------------|--------------------------|--------------------------|-----------------------------|
| KEY | B Boiler | f/f Fridge/freezer space | w Wardrobe space |
| | ST Store | fs Fire Sprinkler | WFH Working from home space |
| | wm Washing machine space | dw Dishwasher space | ◀▶ Dimension location |



BARRATT
HOMES

ELLERTON

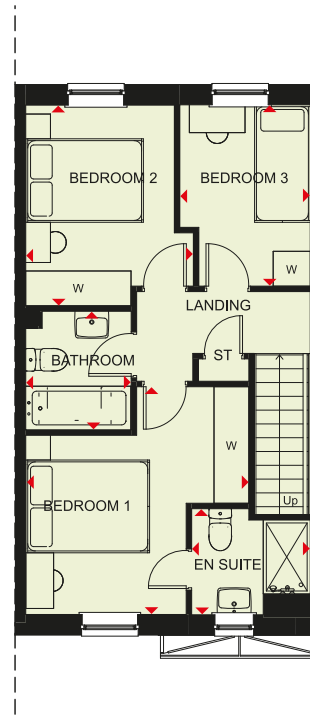
3 BEDROOM HOME



Ground Floor

| | | |
|---------|---------------|----------------|
| Lounge | 3607 x 3966mm | 11'10" x 13'0" |
| Kitchen | 4595 x 3048mm | 15'1" x 10'0" |
| WC | 1671 x 1016mm | 5'6" x 3'4" |

(Approximate dimensions)



First Floor

| | | |
|-----------|---------------|----------------|
| Bedroom 1 | 3607 x 3683mm | 11'10" x 12'1" |
| En suite | 1918 x 1716mm | 6'3" x 5'8" |
| Bedroom 2 | 2711 x 3245mm | 8'11" x 10'8" |
| Bedroom 3 | 2109 x 2932mm | 6'11" x 9'7" |
| Bathroom | 1705 x 1917mm | 5'7" x 6'3" |

(Approximate dimensions)

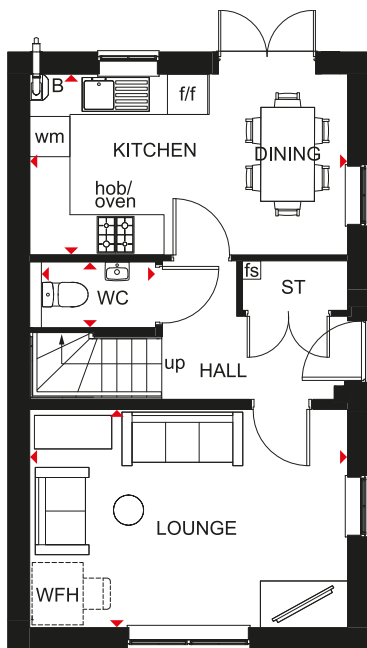
| | | | | | | |
|------------|----|-----------------------|-----|-------------------------|----|--------------------|
| KEY | B | Boiler | dw | Dishwasher space | w | Wardrobe space |
| | ST | Store | f/f | Fridge/freezer space | ◀▶ | Dimension location |
| | wm | Washing machine space | WFH | Working from home space | | |



MORESBY

3 BEDROOM SEMI-DETACHED HOME

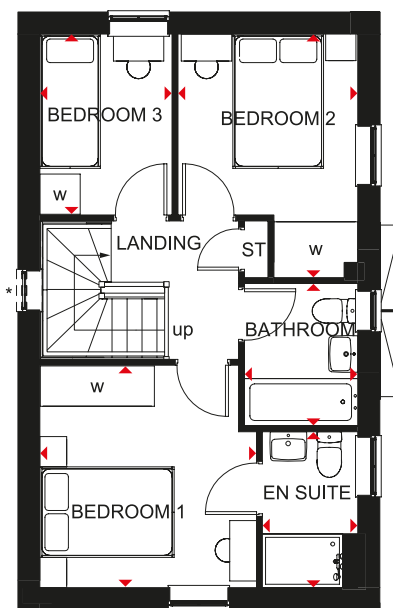
- A bright family home full of light and plenty of space
- The ground floor is comprised of a dual-aspect lounge and an open-plan kitchen with dining area opening onto the garden
- The first floor features two double bedrooms, the main bedroom with en suite, a single bedroom and the family bathroom



Ground Floor

| | | |
|----------------|----------------|---------------|
| Lounge | 4735 x 3250 mm | 15'6" x 10'8" |
| Kitchen/Dining | 4735 x 2696 mm | 15'6" x 8'10" |
| WC | 1682 x 1050 mm | 5'6" x 3'2" |

[Approximate dimensions]



First Floor

| | | |
|-----------|----------------|----------------|
| Bedroom 1 | 3226 x 3312 mm | 10'7" x 10'10" |
| En Suite | 1421 x 2322 mm | 4'8" x 7'7" |
| Bedroom 2 | 2679 x 3628 mm | 8'9" x 11'11" |
| Bedroom 3 | 1968 x 2696 mm | 6'5" x 8'10" |
| Bathroom | 1688 x 2120 mm | 5'6" x 6'11" |

[Approximate dimensions]

*Window may be omitted on certain plots. Speak to a Sales Adviser for details on individual plans.

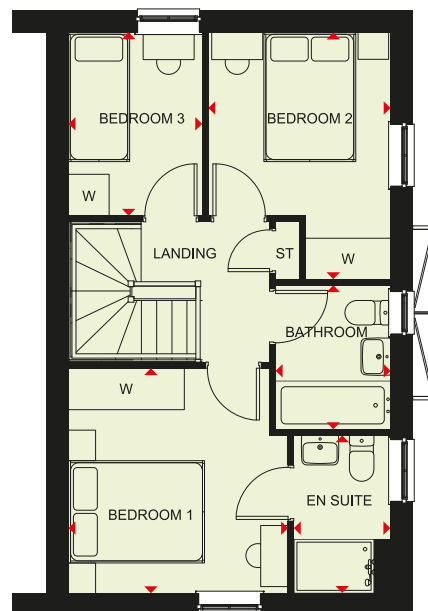
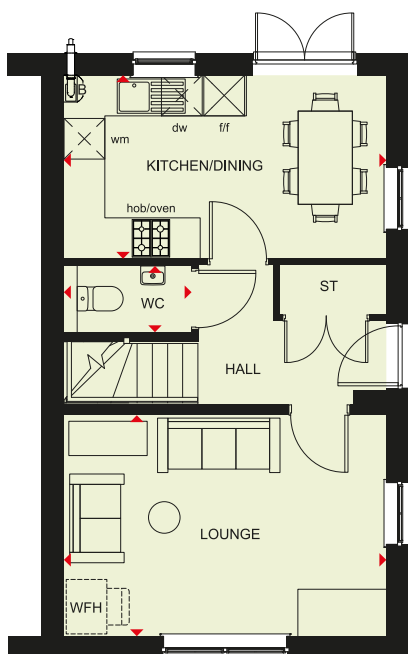
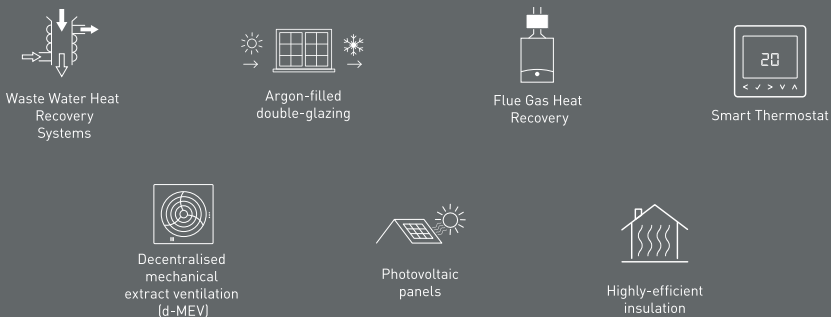
| | | | | | | |
|------------|----|-----------------------|-----|-------------------------|----|--------------------|
| KEY | B | Boiler | f/f | Fridge/freezer space | w | Wardrobe space |
| | ST | Store | fs | Fire Sprinkler | ◀▶ | Dimension location |
| | wm | Washing machine space | WFH | Working from home space | | |



BARRATT
HOMES

MORESBY

3 BEDROOM HOME



Ground Floor

| | | |
|----------------|----------------|---------------|
| Lounge | 4737 x 3245 mm | 15'7" x 10'8" |
| Kitchen/Dining | 4737 x 2696 mm | 15'7" x 8'10" |
| WC | 1877 x 976 mm | 6'2" x 3'2" |

First Floor

| | | |
|-----------|----------------|----------------|
| Bedroom 1 | 3229 x 3307 mm | 10'7" x 10'10" |
| En Suite | 1416 x 2322 mm | 4'8" x 7'7" |
| Bedroom 2 | 2677 x 3628 mm | 8'9" x 11'11" |
| Bedroom 3 | 1968 x 2696 mm | 6'5" x 8'10" |
| Bathroom | 1688 x 2120 mm | 5'6" x 6'11" |

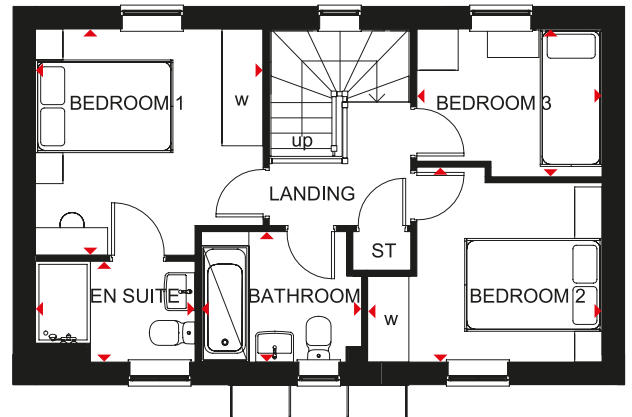
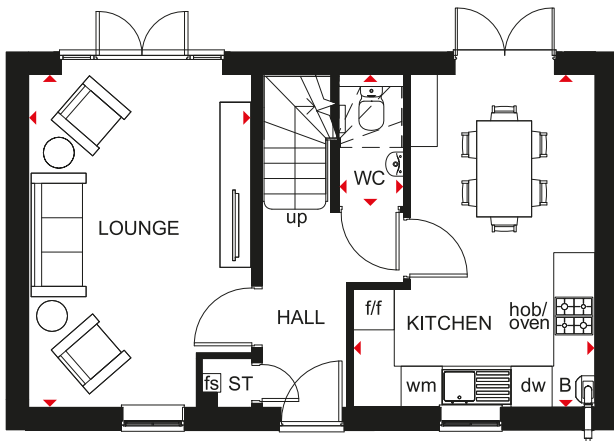
| | | | | | | |
|------------|----|-----------------------|-----|-------------------------|----|--------------------|
| KEY | B | Boiler | dw | Dishwasher space | w | Wardrobe space |
| | ST | Store | f/f | Fridge/freezer space | ◀▶ | Dimension location |
| | wm | Washing machine space | WFH | Working from home space | | |



BUCHANAN

3 BEDROOM DETACHED HOME

- A three bedroom home offering open-plan kitchen and dining area with French doors opening onto the rear garden
- Well-proportioned lounge with French doors leading to the garden
- First floor features two double bedrooms with en suite to main bedroom, single bedroom and family bathroom



Ground Floor

| | | |
|----------------|---------------|----------------|
| Lounge | 4848 x 3250mm | 15'11" x 10'8" |
| Kitchen/Dining | 3521 x 4848mm | 11'7" x 15'11" |
| WC | 1904 x 964mm | 6'4" x 3'1" |

[Approximate dimensions]

First Floor

| | | |
|-----------|---------------|-----------------|
| Bedroom 1 | 3312 x 3292mm | 10'10" x 10'10" |
| En Suite | 2322 x 1468mm | 7'7" x 4'10" |
| Bedroom 2 | 3413 x 2836mm | 11'2" x 9'4" |
| Bedroom 3 | 2696 x 2150mm | 8'10" x 7'1" |
| Bathroom | 2335 x 1900mm | 7'8" x 6'3" |

[Approximate dimensions]

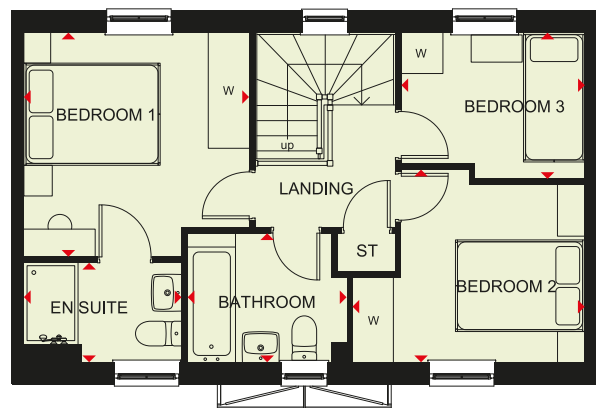
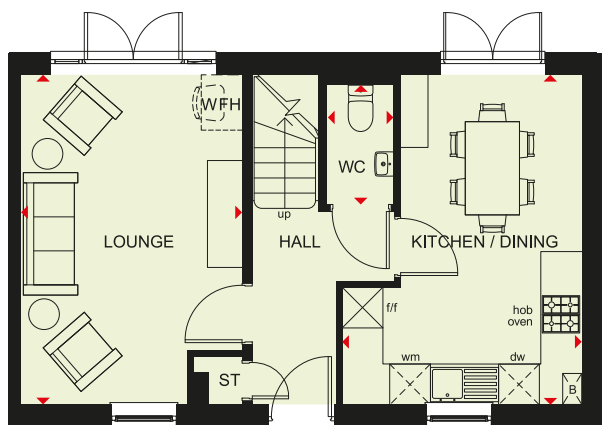
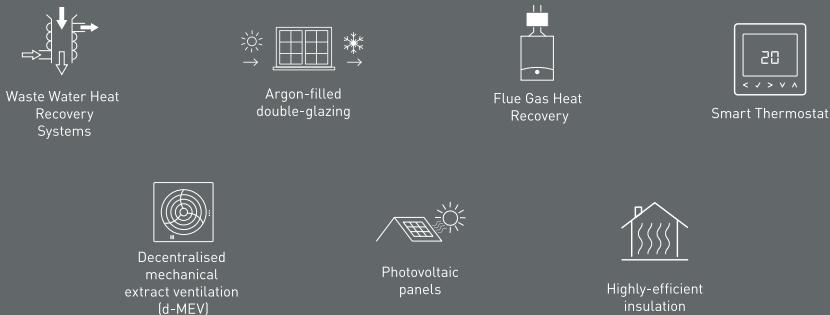
| | | | | | | |
|------------|----|----------------|-----|-----------------------|----|--------------------|
| KEY | B | Boiler | wm | Washing machine space | dw | Dishwasher space |
| | ST | Store | f/f | Fridge/freezer space | ◀▶ | Dimension location |
| | w | Wardrobe space | fs | Fire Sprinkler | | |



BARRATT
HOMES

BUCHANAN

3 BEDROOM HOME



Ground Floor

| | | |
|----------------|----------------|----------------|
| Lounge | 3248 x 4843 mm | 10'8" x 15'11" |
| Kitchen/Dining | 3521 x 4848 mm | 11'7" x 15'11" |
| WC | 964 x 1754 mm | 3'2" x 5'9" |

(Approximate dimensions)

First Floor

| | | |
|-----------|----------------|-----------------|
| Bedroom 1 | 3310 x 3293 mm | 10'10" x 10'10" |
| En Suite | 2319 x 1462 mm | 7'7" x 4'10" |
| Bedroom 2 | 3413 x 2831 mm | 11'2" x 9'3" |
| Bedroom 3 | 2696 x 2150 mm | 8'10" x 7'11" |
| Bathroom | 2335 x 1900 mm | 7'8" x 6'3" |

(Approximate dimensions)

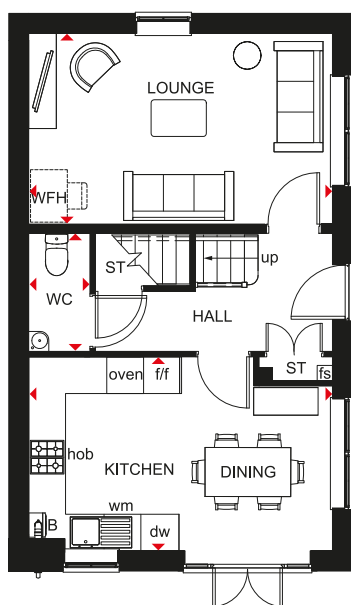
| | | | |
|------------|--------------------------|-----------------------------|-----------------------|
| KEY | B Boiler | wm Washing machine space | W Wardrobe space |
| | ST Store | dw Dishwasher space | ◀▶ Dimension location |
| | f/f Fridge/freezer space | WFH Working from home space | |



ENNERDALE

3 BEDROOM DETACHED HOME

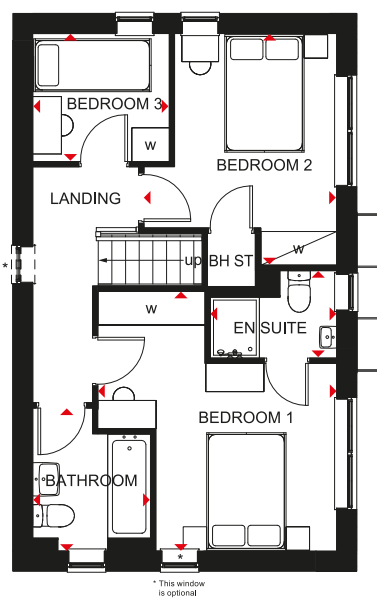
- Light flows into this attractive three bedroom detached home through oversized windows
- A dual-aspect lounge and bright, fitted kitchen with dining area opening onto the garden provide space that's ideal for modern living
- Upstairs are two spacious, double bedrooms, the main bedroom with en suite, a single bedroom and family bathroom



Ground Floor

| | | |
|----------------|----------------|---------------|
| Lounge | 4960 x 3112 mm | 16'3" x 10'2" |
| Kitchen/Dining | 4960 x 3170 mm | 16'3" x 10'4" |
| WC | 1929 x 982 mm | 6'4" x 3'3" |

[Approximate dimensions]



First Floor

| | | |
|-----------|----------------|----------------|
| Bedroom 1 | 4239 x 3898 mm | 13'11" x 12'9" |
| En Suite | 2061 x 1427 mm | 6'9" x 4'8" |
| Bedroom 2 | 3783 x 3145 mm | 12'5" x 10'4" |
| Bedroom 3 | 2227 x 2089 mm | 7'4" x 6'10" |
| Bathroom | 2334 x 1924 mm | 7'8" x 6'4" |

[Approximate dimensions]

* Window may be omitted on certain plots. Speak to a Sales Adviser for details on individual plots.

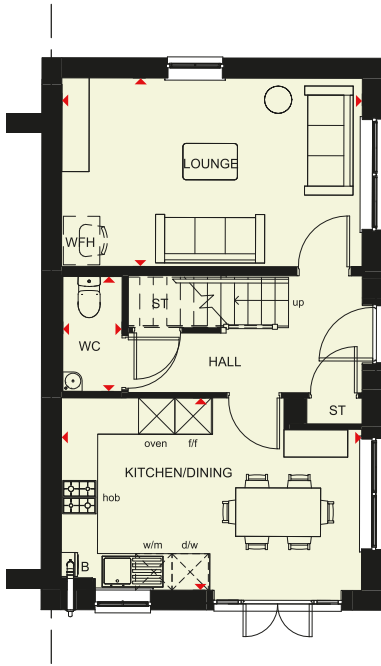
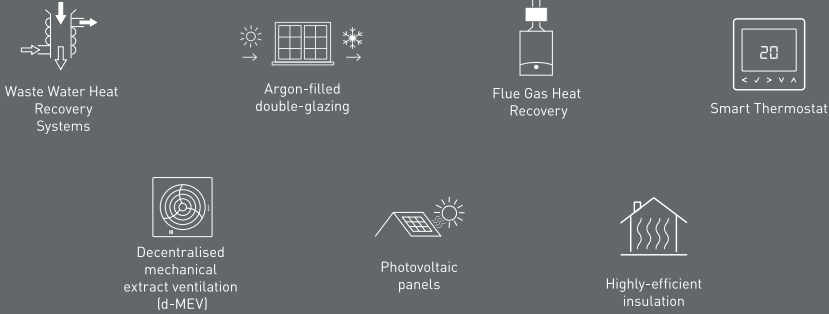
| | | | | |
|------------|----------------------|--------------------------|-----------------------------|-----------------------|
| KEY | B Boiler | wm Washing machine space | dw Dishwasher space | ◀▶ Dimension location |
| | ST Store | f/f Fridge/freezer space | w Wardrobe space | |
| | BH ST Bulkhead store | fs Fire Sprinkler | WHF Working from home space | |



BARRATT
HOMES

ENNERDALE

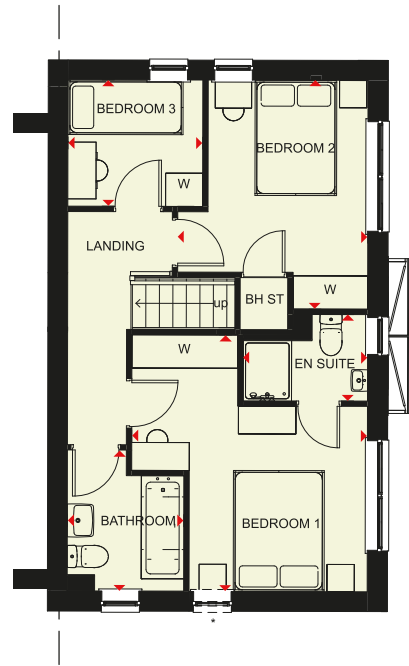
3 BEDROOM HOME



Ground Floor

| | | |
|----------------|----------------|---------------|
| Lounge | 4955 x 3107 mm | 16'3" x 10'2" |
| Kitchen/Dining | 4955 x 3170 mm | 16'3" x 10'5" |
| WC | 980 x 1895 mm | 3'3" x 6'3" |

(Approximate dimensions)



First Floor

| | | |
|-----------|----------------|----------------|
| Bedroom 1 | 3893 x 4239 mm | 12'9" x 13'11" |
| En Suite | 2056 x 1427 mm | 6'9" x 4'8" |
| Bedroom 2 | 3140 x 3783 mm | 10'4" x 12'5" |
| Bedroom 3 | 2227 x 2089 mm | 7'4" x 6'10" |
| Bathroom | 1924 x 2329 mm | 6'4" x 7'8" |

(Approximate dimensions)

* Window may be omitted on certain plots. Speak to Sales Adviser for details on individual plans.

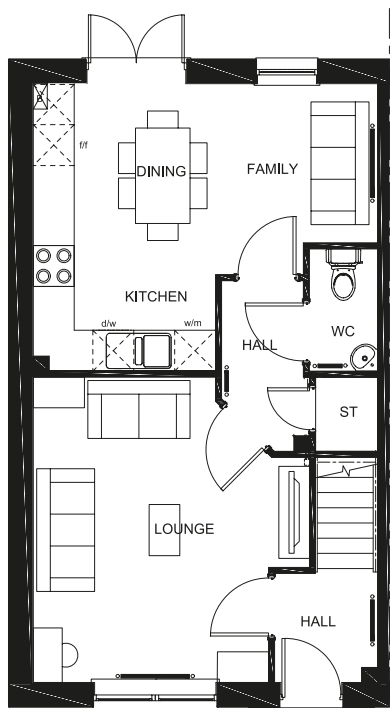
| | | | |
|------------|--------------------------|-----------------------------|-----------------------|
| KEY | B Boiler | dw Dishwasher space | BH/ST Bulkhead Store |
| | ST Store | f/f Fridge/freezer space | W Wardrobe space |
| | wm Washing machine space | WFH Working From Home space | ◀▶ Dimension location |



MATLOCK

3 BEDROOM HOME

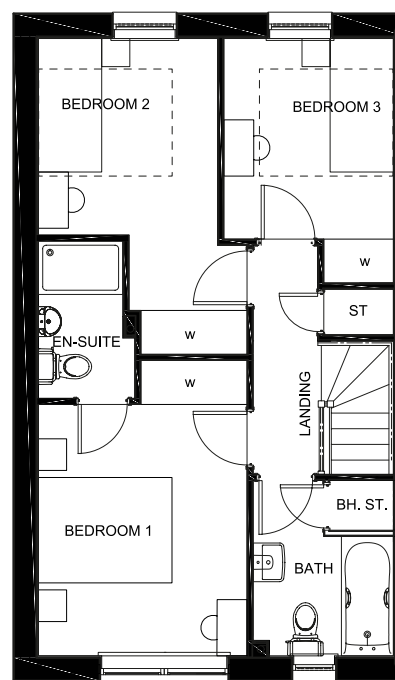
- Bright, practical home, ideal for modern family living
- Large, open-plan kitchen with ample dining space and French doors leading to the rear garden
- Good-sized lounge for all the family to relax in
- Upstairs, bedroom 1 has an en suite shower room, there are two single bedrooms and a family bathroom.



Ground Floor

| | | |
|---------------|----------------|----------------|
| Lounge | 4052 x 3452 mm | 13'3" x 11'4" |
| Kitchen/Diner | 5050 x 4217 mm | 16'7" x 13'10" |
| WC | 1793 x 1000 mm | 5'11" x 3'3" |

[Approximate dimensions]



First Floor

| | | |
|-----------|----------------|---------------|
| Bedroom 1 | 3578 x 2967 mm | 11'9" x 9'9" |
| En Suite | 2238 x 1369 mm | 4'6" x 7'4" |
| Bedroom 2 | 4495 x 2550 mm | 14'9" x 8'4" |
| Bedroom 3 | 3480 x 2413 mm | 11'5" x 7'11" |
| Bathroom | 2496 x 2020 mm | 8'2" x 6'8" |

[Approximate dimensions]

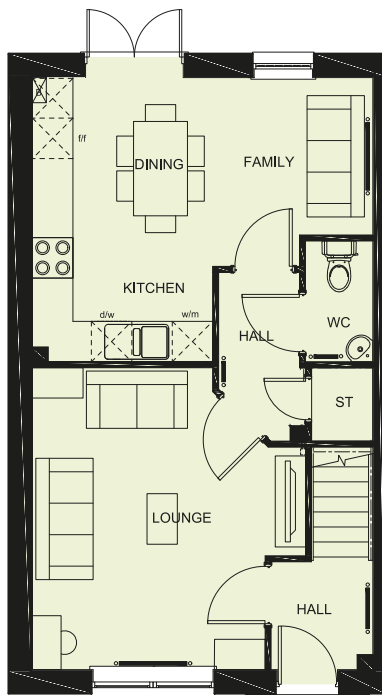
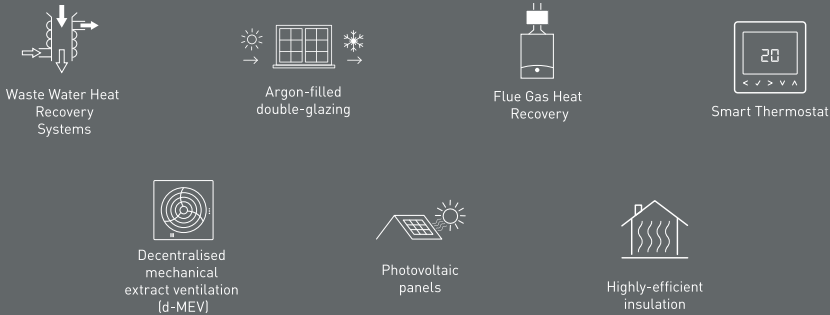
| | | | | | | |
|------------|----|-----------------------|-----|----------------------|----|--------------------|
| KEY | B | Boiler | f/f | Fridge/freezer space | w | Wardrobe space |
| | ST | Store | fs | Fire Sprinkler | ◀▶ | Dimension location |
| | wm | Washing machine space | dw | Dishwasher space | | |
| | | | | | | |



BARRATT
HOMES

MATLOCK

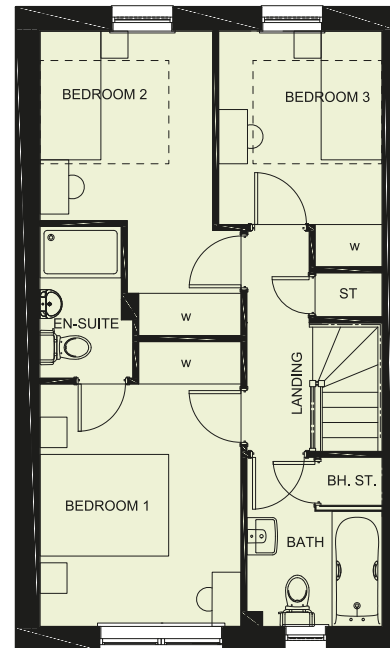
3 BEDROOM HOME



Ground Floor

| | | |
|---------------|----------------|----------------|
| Lounge | 4052 x 3452 mm | 13'3" x 11'4" |
| Kitchen/Diner | 5050 x 4217 mm | 16'7" x 13'10" |
| WC | 1793 x 1000 mm | 5'11" x 3'3" |

[Approximate dimensions]



First Floor

| | | |
|-----------|----------------|---------------|
| Bedroom 1 | 3578 x 2967 mm | 11'9" x 9'9" |
| En Suite | 2238 x 1369 mm | 4'6" x 7'4" |
| Bedroom 2 | 4495 x 2550 mm | 14'9" x 8'4" |
| Bedroom 3 | 3480 x 2413 mm | 11'5" x 7'11" |
| Bathroom | 2496 x 2020 mm | 8'2" x 6'8" |

[Approximate dimensions]

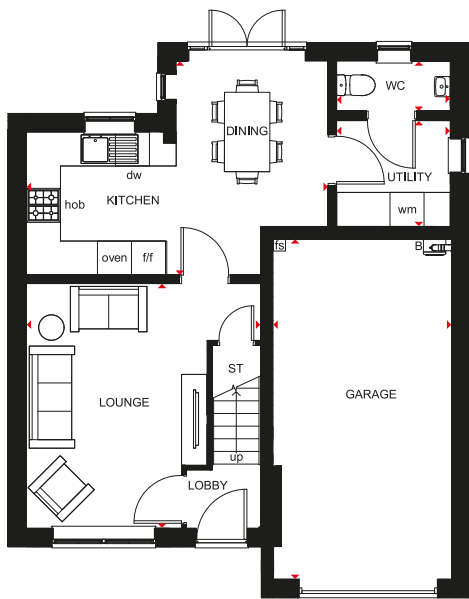
| | | | | | | |
|------------|----|-----------------------|-----|----------------------|---|--------------------|
| KEY | B | Boiler | f/f | Fridge/freezer space | w | Wardrobe space |
| | ST | Store | fs | Fire Sprinkler | ↔ | Dimension location |
| | wm | Washing machine space | dw | Dishwasher space | | |



BEWDLEY

3 BEDROOM DETACHED HOME

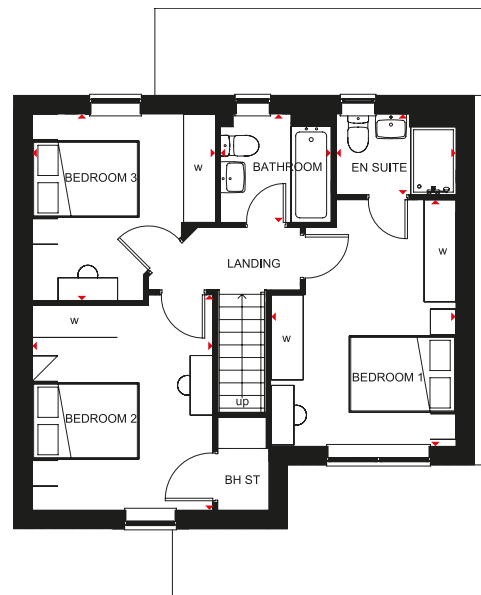
- Comfortable detached home with integral garage for added security
- Open-plan kitchen with spacious dining area and French doors to the rear garden
- Separate utility room
- Front-aspect lounge with room for all the family to relax
- An en suite main bedroom is upstairs, with two double bedrooms and a family bathroom



Ground Floor

| | | |
|----------------|---------------|---------------|
| Lounge | 4128 x 4312mm | 13'7" x 14'2" |
| Kitchen/Dining | 5320 x 3773mm | 17'5" x 12'5" |
| Utility | 2002 x 1865mm | 6'7" x 6'1" |
| WC | 2002 x 900mm | 6'7" x 2'11" |
| Garage | 3150 x 6000mm | 10'4" x 19'8" |

[Approximate dimensions]



First Floor

| | | |
|-----------|---------------|---------------|
| Bedroom 1 | 3257 x 4348mm | 10'8" x 14'3" |
| En Suite | 2113 x 1425mm | 6'11" x 4'8" |
| Bedroom 2 | 3185 x 3797mm | 10'5" x 12'5" |
| Bedroom 3 | 3233 x 3289mm | 10'7" x 10'9" |
| Bathroom | 1951 x 1913mm | 6'5" x 6'3" |

[Approximate dimensions]

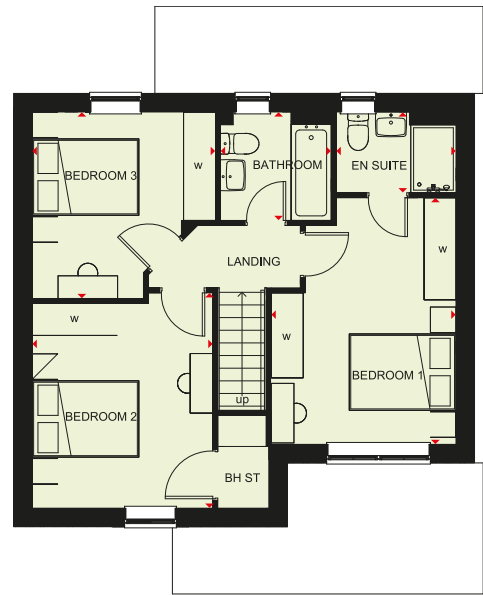
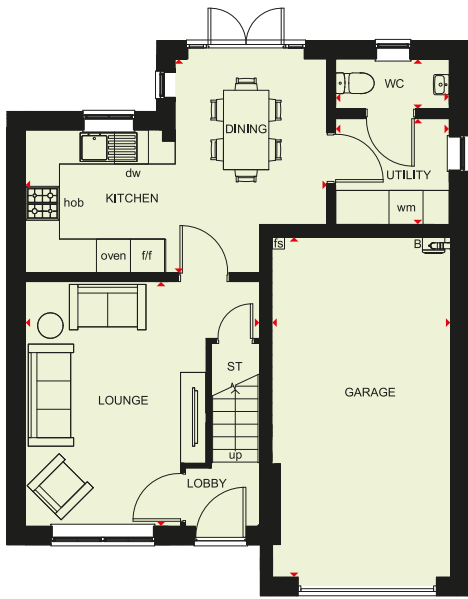
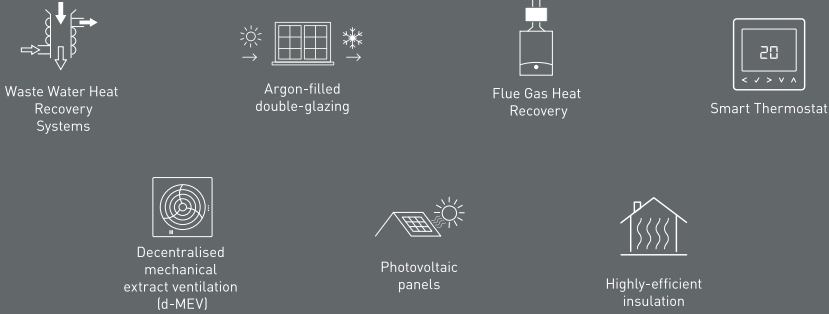
| | | | | | | |
|------------|-------|----------------|-----|-----------------------|----|--------------------|
| KEY | B | Boiler | wm | Washing machine space | dw | Dishwasher space |
| | ST | Store | f/f | Fridge/freezer space | w | Wardrobe space |
| | BH ST | Bulkhead store | fs | Fire Sprinkler | ◀▶ | Dimension location |
| | | | | | | |



BARRATT
HOMES

BEWDLEY

3 BEDROOM DETACHED HOME



Ground Floor

| | | |
|----------------|---------------|---------------|
| Lounge | 4128 x 4312mm | 13'7" x 14'2" |
| Kitchen/Dining | 5320 x 3773mm | 17'5" x 12'5" |
| Utility | 2002 x 1865mm | 6'7" x 6'1" |
| WC | 2002 x 900mm | 6'7" x 2'11" |
| Garage | 3150 x 6000mm | 10'4" x 19'8" |

First Floor

| | | |
|-----------|---------------|---------------|
| Bedroom 1 | 3257 x 4348mm | 10'8" x 14'3" |
| En Suite | 2113 x 1425mm | 6'11" x 4'8" |
| Bedroom 2 | 3185 x 3797mm | 10'5" x 12'5" |
| Bedroom 3 | 3233 x 3289mm | 10'7" x 10'9" |
| Bathroom | 1951 x 1913mm | 6'5" x 6'3" |

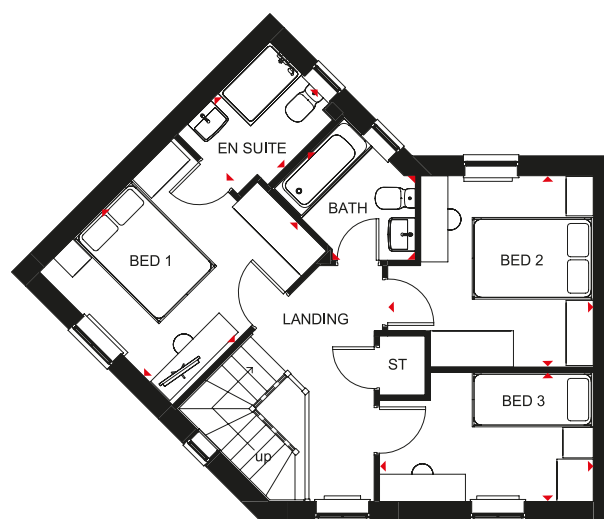
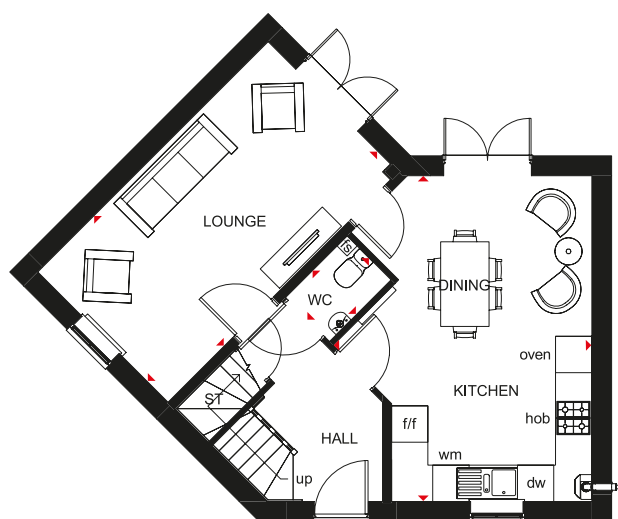
| | | | |
|------------|----------------------|--------------------------|-----------------------|
| KEY | B Boiler | wm Washing machine space | dw Dishwasher space |
| | ST Store | f/f Fridge/freezer space | w Wardrobe space |
| | BH ST Bulkhead store | fs Fire Sprinkler | ◀▶ Dimension location |



LUTTERWORTH

3 BEDROOM SEMI-DETACHED HOME

- Great use of a corner plot to create a spacious home
- Bright and flexible areas to enjoy modern-day living
- French doors open onto the rear garden from both the dual-aspect lounge and the open-plan kitchen with dining area
- Galleried landing leads to two double bedrooms – the master with en suite – a single bedroom and the family bathroom



Ground Floor

| | | |
|----------------|---------------|---------------|
| Lounge | 5385 x 3045mm | 17'8" x 10'0" |
| Kitchen/Dining | 4274 x 5385mm | 14'0" x 17'8" |
| WC | 1028 x 1441mm | 3'4" x 4'9" |

(Approximate dimensions)

First Floor

| | | |
|-----------|---------------|----------------|
| Bedroom 1 | 3107 x 3599mm | 10'2" x 11'10" |
| En Suite | 1648 x 2159mm | 5'5" x 7'1" |
| Bedroom 2 | 3404 x 3163mm | 11'2" x 10'5" |
| Bedroom 3 | 3540 x 2134mm | 11'7" x 7'0" |
| Bathroom | 2519 x 1958mm | 8'3" x 6'5" |

(Approximate dimensions)

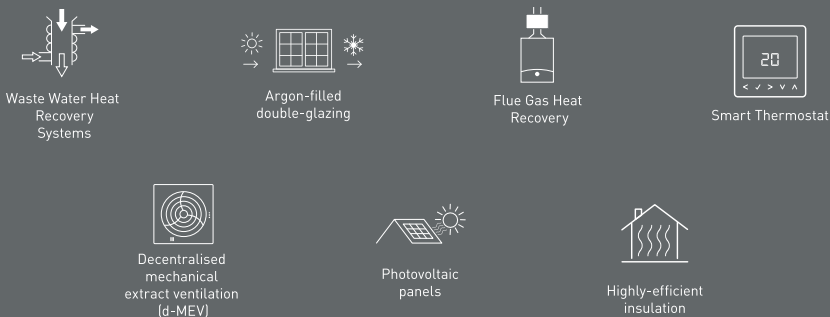
| | | | |
|------------|--------------------------|--------------------------|-----------------------|
| KEY | ST Store | f/f Fridge/freezer space | dw Dishwasher space |
| | wm Washing machine space | fs Fire Sprinkler | ◀▶ Dimension location |



BARRATT
HOMES

LUTTERWORTH

3 BEDROOM SEMI-DETACHED HOME



Ground Floor

| | | |
|----------------|---------------|---------------|
| Lounge | 5385 x 3045mm | 17'8" x 10'0" |
| Kitchen/Dining | 4274 x 5385mm | 14'0" x 17'8" |
| WC | 1028 x 1441mm | 3'4" x 4'9" |

(Approximate dimensions)

First Floor

| | | |
|-----------|---------------|----------------|
| Bedroom 1 | 3107 x 3599mm | 10'2" x 11'10" |
| En Suite | 1648 x 2159mm | 5'5" x 7'1" |
| Bedroom 2 | 3404 x 3163mm | 11'2" x 10'5" |
| Bedroom 3 | 3540 x 2134mm | 11'7" x 7'0" |
| Bathroom | 2519 x 1958mm | 8'3" x 6'5" |

(Approximate dimensions)

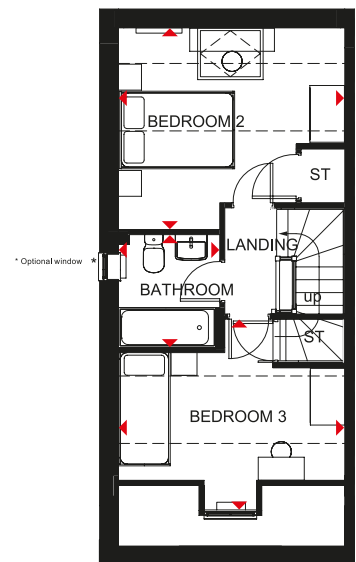
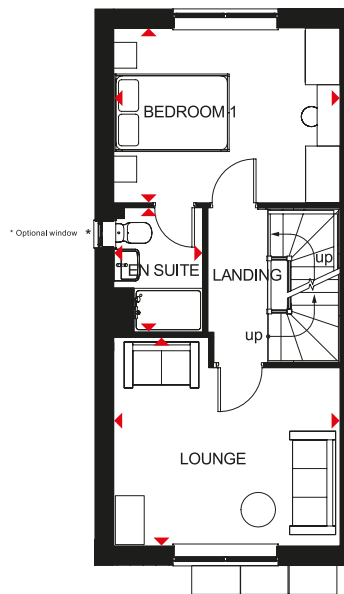
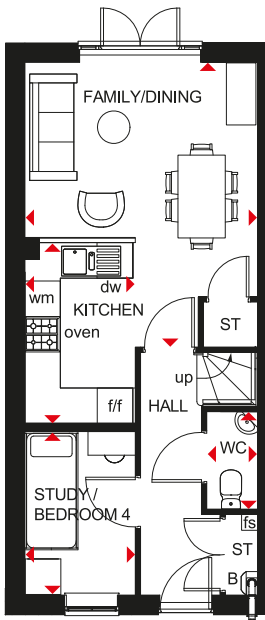
| | | | |
|------------|--------------------------|--------------------------|-----------------------|
| KEY | ST Store | f/f Fridge/freezer space | dw Dishwasher space |
| | wm Washing machine space | fs Fire Sprinkler | ◀▶ Dimension location |



KINGSVILLE

4 BEDROOM SEMI-DETACHED HOME

- An ideal family home designed over three floors
- A generous open-plan kitchen with dining and family areas, and a fourth bedroom/study are on the ground floor
- On the first floor oversized windows fill the lounge and main bedroom with light, giving them a bright and airy feeling, and the bedroom has an en suite
- The second floor offers a further double bedroom, a single bedroom and a family bathroom



Ground Floor

| | | |
|-----------------|---------------|-----------------|
| Family/Dining | 3936 x 4820mm | 12'11" x 15'10" |
| Kitchen | 1866 x 3060mm | 6'1" x 10'0" |
| Study/Bedroom 4 | 1866 x 2749mm | 6'1" x 9'0" |
| WC | 895 x 1649mm | 2'10" x 5'5" |

[Approximate dimensions]

First Floor

| | | |
|-----------|---------------|-----------------|
| Lounge | 3936 x 3630mm | 12'11" x 11'11" |
| Bedroom 1 | 3936 x 3042mm | 12'11" x 10'0" |
| En Suite | 1551 x 2163mm | 5'1" x 7'1" |

[Approximate dimensions]

* Window may be omitted on certain plots. Speak to a Sales Adviser for details on individual plots.

Second Floor

| | | |
|-----------|---------------|-----------------|
| Bedroom 2 | 3936 x 3508mm | 12'11" x 11'6" |
| Bedroom 3 | 3936 x 3325mm | 12'11" x 10'11" |
| Bathroom | 1761 x 1963mm | 5'9" x 6'5" |

[Approximate dimensions]

* Window may be omitted on certain plots. Speak to a Sales Adviser for details on individual plots.

* Overall floor dimension includes lower ceiling areas.

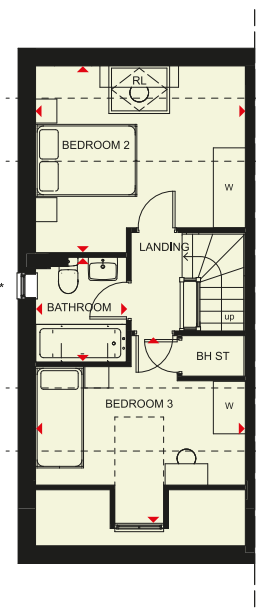
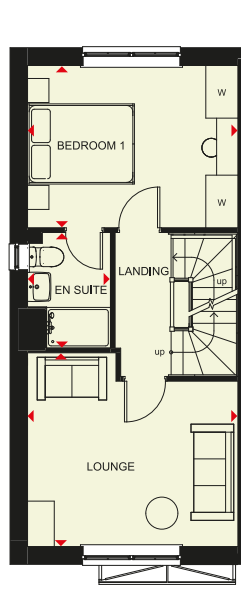
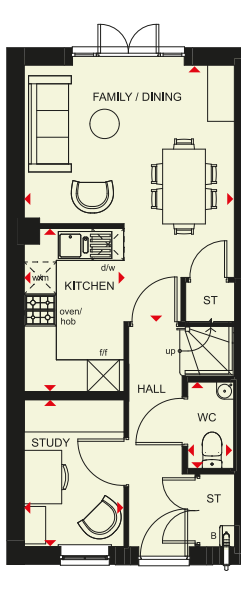
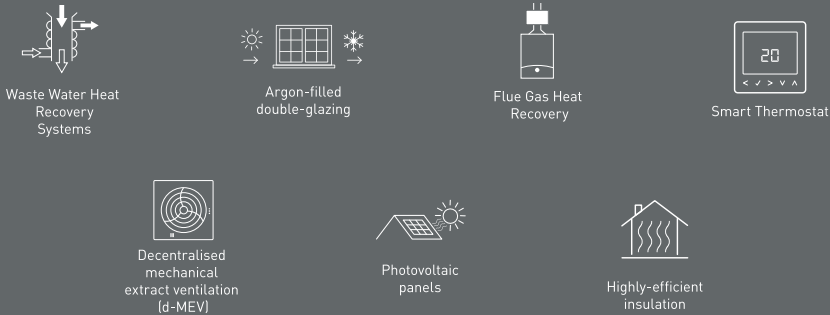
| | | | |
|------------|--------------------------|--------------------------|-----------------------------|
| KEY | B Boiler | f/f Fridge/freezer space | W Wardrobe space |
| | ST Store | fs Fire Sprinkler | WFH Working from home space |
| | wm Washing machine space | dw Dishwasher space | ◀▶ Dimension location |



BARRATT
HOMES

KINGSVILLE

3 BEDROOM HOME



Ground Floor

| | | |
|---------------|----------------|----------------|
| Dining/Family | 3931 x 4800 mm | 12'11" x 15'9" |
| Kitchen | 1866 x 3060 mm | 6'1" x 10'0" |
| Study | 1866 x 2744 mm | 6'1" x 9'0" |
| WC | 860 x 1615 mm | 2'10" x 5'4" |

First Floor

| | | |
|-----------|----------------|-----------------|
| Lounge | 3936 x 3625 mm | 12'11" x 11'11" |
| Bedroom 1 | 3936 x 3037 mm | 12'11" x 10'0" |
| En Suite | 1551 x 2163 mm | 5'1" x 7'1" |

* Window may be omitted on certain plots. Speak to Sales Adviser for details on individual plans.

Second Floor

| | | |
|-----------|----------------|----------------|
| Bedroom 2 | 3936 x 3503 mm | 12'11" x 11'6" |
| Bedroom 3 | 3936 x 3488 mm | 12'11" x 11'5" |
| Bathroom | 1705 x 1963 mm | 5'7" x 6'5" |

* Window may be omitted on certain plots. Speak to Sales Adviser for details on individual plans.

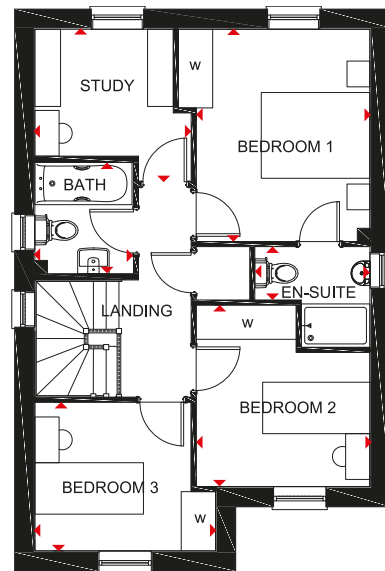
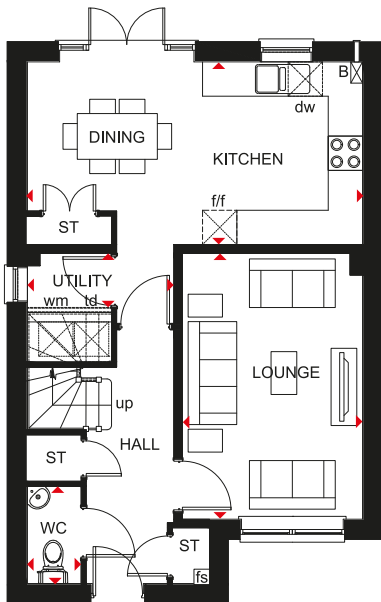
| | | | |
|------------|----------------------------------|---------------------------------|------------------------------|
| KEY | B Boiler | d/w Dishwasher space | W Wardrobe space |
| | ST Store | f/f Fridge/freezer space | ◀▶ Dimension location |
| | w/m Washing machine space | BH/ST Bulkhead Store | |



KENNISHAM

3 BEDROOM HOME

- A large fitted kitchen with family and breakfast areas provides this spacious home with the ideal hub for all the family
- French doors leading to the rear garden from the kitchen give it a bright and airy feeling
- Upstairs there is a double bedroom with en suite, two single bedrooms, a home office and a family bathroom



Ground Floor

| | | |
|----------------|----------------|---------------|
| Lounge | 4652 x 3150 mm | 15'3" x 10'4" |
| Kitchen/Dining | 5860 x 3195 mm | 19'3" x 10'6" |
| WC | 1700 x 940 mm | 5'7" x 3'11" |

[Approximate dimensions]

First Floor

| | | |
|-----------|----------------|----------------|
| Bedroom 1 | 3350 x 3712 mm | 10'12" x 12'2" |
| En Suite | 2012 x 1762 mm | 6'7" x 5'9" |
| Bedroom 2 | 3170 x 3038 mm | 10'5" x 9'12" |
| Bedroom 3 | 3160 x 2601 mm | 10'4" x 8'6" |
| Study | 2734 x 2669 mm | 8'12" x 8'9" |
| Bathroom | 1948 x 1725 mm | 6'5" x 5'8" |

[Approximate dimensions]

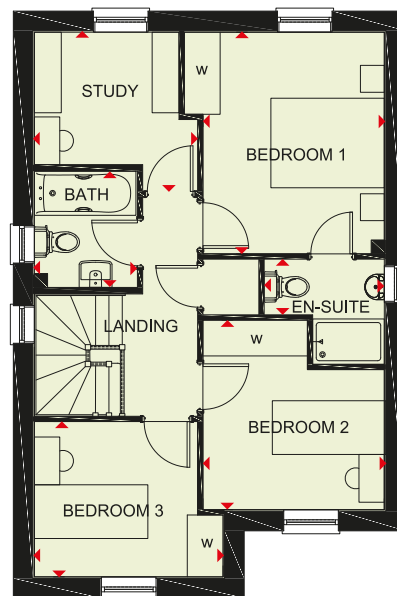
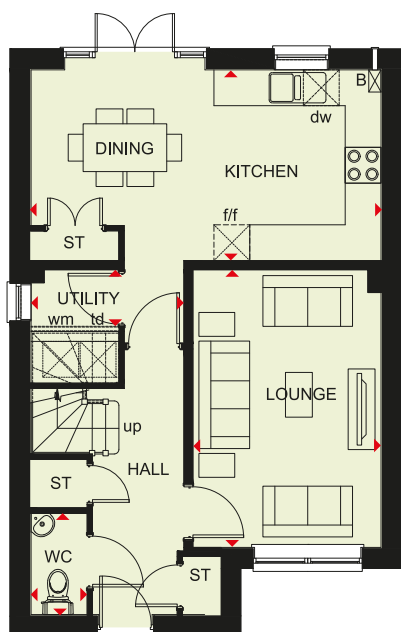
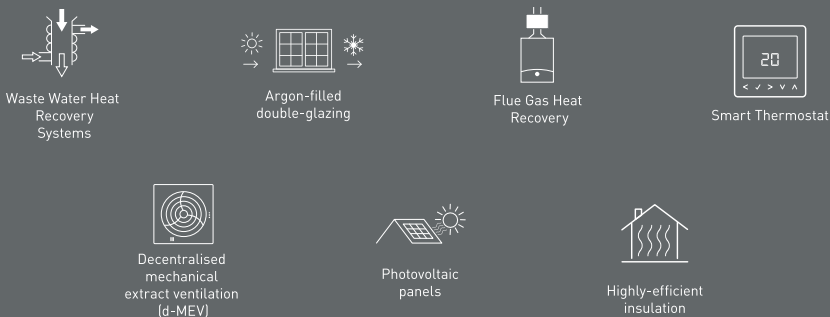
| | | | | | | |
|------------|----|-----------------------|-----|----------------------|----|--------------------|
| KEY | B | Boiler | f/f | Fridge/freezer space | w | Wardrobe space |
| | ST | Store | fs | Fire Sprinkler | ◀▶ | Dimension location |
| | wm | Washing machine space | dw | Dishwasher space | | |



BARRATT
HOMES

KENNISHAM

3 BEDROOM HOME



Ground Floor

| | | |
|----------------|----------------|---------------|
| Lounge | 4652 x 3150 mm | 15'3" x 10'4" |
| Kitchen/Dining | 5860 x 3195 mm | 19'3" x 10'6" |
| WC | 1700 x 940 mm | 5'7" x 3'1" |

[Approximate dimensions]

First Floor

| | | |
|-----------|----------------|----------------|
| Bedroom 1 | 3350 x 3712 mm | 10'12" x 12'2" |
| En Suite | 2012 x 1762 mm | 6'7" x 5'9" |
| Bedroom 2 | 3170 x 3038 mm | 10'5" x 9'12" |
| Bedroom 3 | 3160 x 2601 mm | 10'4" x 8'6" |
| Study | 2734 x 2669 mm | 8'12" x 8'9" |
| Bathroom | 1948 x 1725 mm | 6'5" x 5'8" |

[Approximate dimensions]

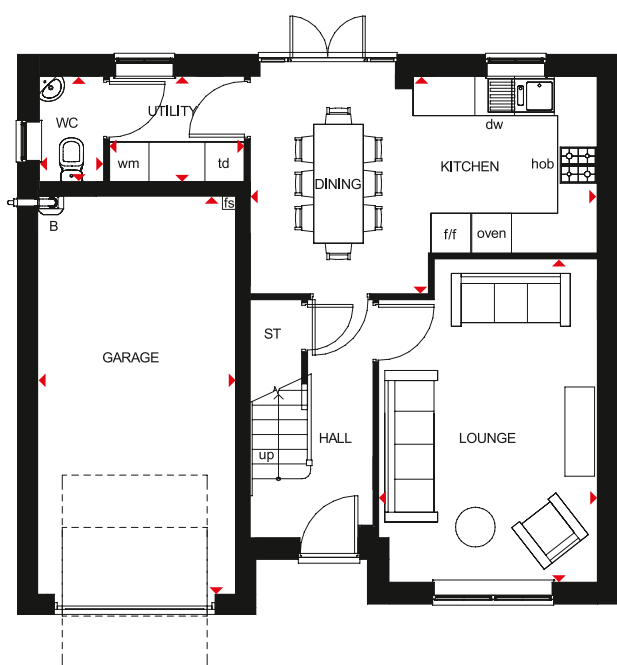
| | | | | | | |
|------------|----|-----------------------|-----|----------------------|----|--------------------|
| KEY | B | Boiler | f/f | Fridge/freezer space | w | Wardrobe space |
| | ST | Store | fs | Fire Sprinkler | ◀▶ | Dimension location |
| | wm | Washing machine space | dw | Dishwasher space | | |



HEMSWORTH

4 BEDROOM DETACHED HOME

- An airy open-plan kitchen creates the perfect hub for all the family with its flexible dining area and French doors leading to the garden
- The spacious feeling flows through to the front-aspect lounge
- An integral garage and separate utility make this a practical home
- Upstairs are four double bedrooms, the master with en suite and a family bathroom



Ground Floor

| | | |
|----------------|---------------|----------------|
| Lounge | 4897 x 3310mm | 16'1" x 10'10" |
| Kitchen/Dining | 5253 x 3297mm | 17'3" x 10'10" |
| Utility | 1598 x 2044mm | 5'3" x 6'8" |
| WC | 1598 x 976mm | 5'3" x 3'2" |
| Garage | 6025 x 3000mm | 19'9" x 9'10" |

[Approximate dimensions]



First Floor

| | | |
|-----------|---------------|----------------|
| Bedroom 1 | 4219 x 4007mm | 13'10" x 13'2" |
| En Suite | 2010 x 1661mm | 6'7" x 5'5" |
| Bedroom 2 | 3107 x 3775mm | 10'2" x 12'5" |
| Bedroom 3 | 3566 x 3169mm | 11'8" x 10'5" |
| Bedroom 4 | 3126 x 3123mm | 10'3" x 10'3" |
| Bathroom | 2151 x 1901mm | 7'1" x 6'3" |

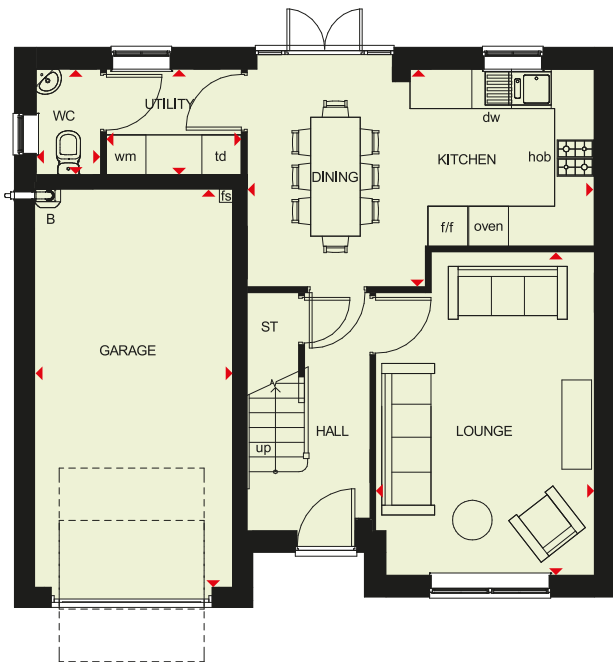
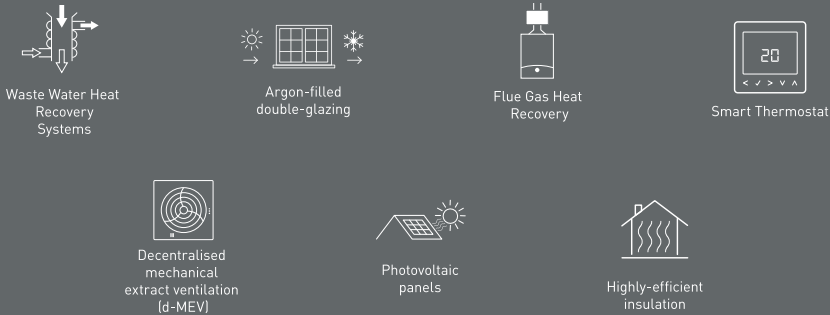
[Approximate dimensions]

| | | | | | | |
|------------|----|-----------------------|-----|----------------------|-----|-------------------------|
| KEY | B | Boiler | f/f | Fridge/freezer space | td | Tumble dryer space |
| | ST | Store | fs | Fire Sprinkler | WFH | Working from home space |
| | wm | Washing machine space | dw | Dishwasher space | ◀▶ | Dimension location |
| | | | | | | |



HEMSWORTH

4 BEDROOM DETACHED HOME



Ground Floor

| | | |
|----------------|---------------|----------------|
| Lounge | 4897 x 3310mm | 16'1" x 10'10" |
| Kitchen/Dining | 5253 x 3297mm | 17'3" x 10'10" |
| Utility | 1598 x 2044mm | 5'3" x 6'8" |
| WC | 1598 x 976mm | 5'3" x 3'2" |
| Garage | 6025 x 3000mm | 19'9" x 9'10" |

(Approximate dimensions)



First Floor

| | | |
|-----------|---------------|----------------|
| Bedroom 1 | 4219 x 4007mm | 13'10" x 13'2" |
| En Suite | 2010 x 1661mm | 6'7" x 5'5" |
| Bedroom 2 | 3107 x 3775mm | 10'2" x 12'5" |
| Bedroom 3 | 3566 x 3169mm | 11'8" x 10'5" |
| Bedroom 4 | 3126 x 3123mm | 10'3" x 10'3" |
| Bathroom | 2151 x 1901mm | 7'1" x 6'3" |

(Approximate dimensions)

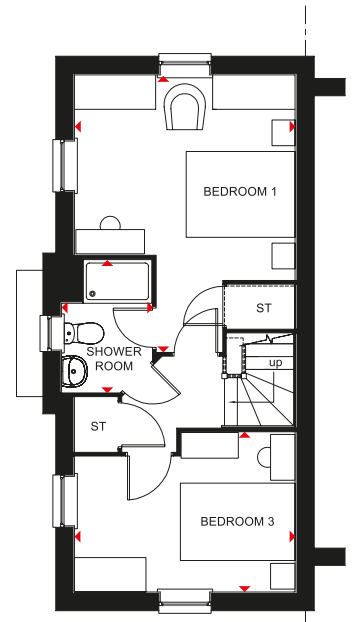
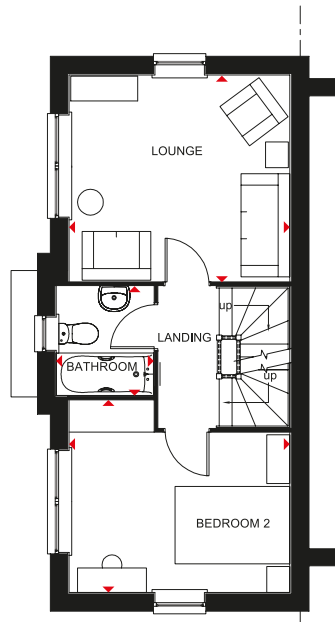
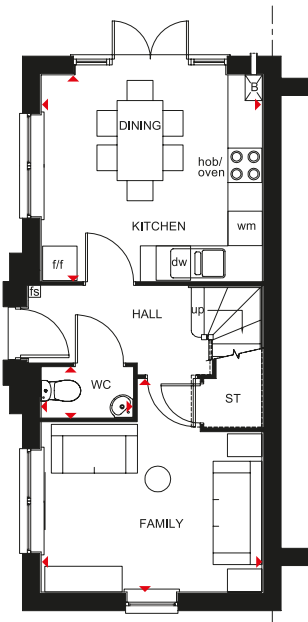
| | | | | | | |
|------------|----|-----------------------|-----|----------------------|-----|-------------------------|
| KEY | B | Boiler | f/f | Fridge/freezer space | td | Tumble dryer space |
| | ST | Store | fs | Fire Sprinkler | WFH | Working from home space |
| | wm | Washing machine space | dw | Dishwasher space | ◀▶ | Dimension location |



BRENTFORD

3 BEDROOM SEMI-DETACHED HOME

- Bright family home designed over three storeys
- Open-plan kitchen with dining area and French doors to the garden, and a separate family room are on the ground floor
- The first floor has a dual-aspect lounge, one double bedroom and the family bathroom
- Two double bedrooms, the master with dual-access en suite, are on the top floor



Ground Floor

| | | |
|----------------|----------------|----------------|
| Kitchen/Dining | 3860 x 3597 mm | 12'8" x 11'10" |
| Family Room | 3860 x 3702 mm | 12'8" x 12'2" |
| WC | 1601 x 874 mm | 5'3" x 2'10" |

[Approximate dimensions]

First Floor

| | | |
|-----------|---------------|----------------|
| Lounge | 3860 x 3597mm | 12'8" x 11'10" |
| Bedroom 2 | 3860 x 3313mm | 12'8" x 10'10" |
| Bathroom | 1867 x 1701mm | 6'2" x 5'7" |

[Approximate dimensions]

Second Floor

| | | |
|-------------|---------------|----------------|
| Bedroom 1 | 4832 x 3860mm | 15'10" x 12'8" |
| Bedroom 3 | 3860 x 2800mm | 12'8" x 9'2" |
| Shower Room | 2315 x 1576mm | 7'7" x 5'2" |

[Approximate dimensions]

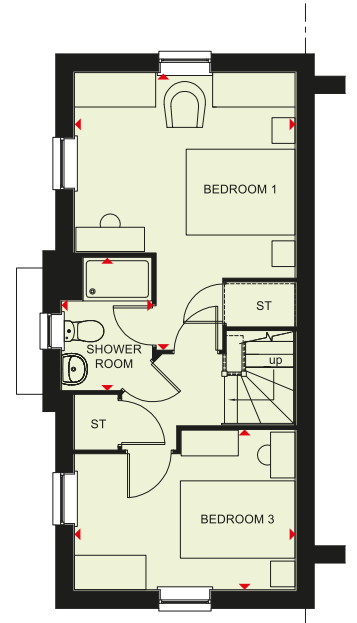
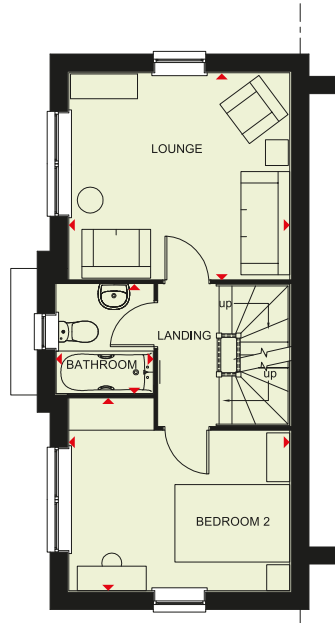
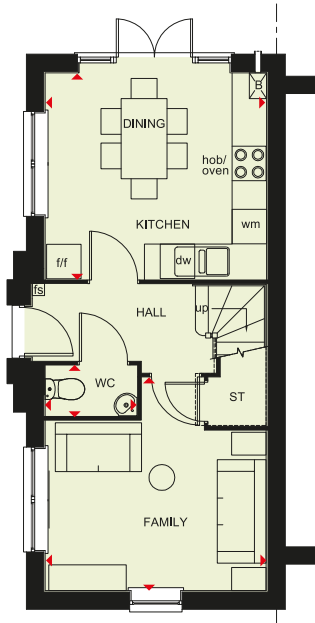
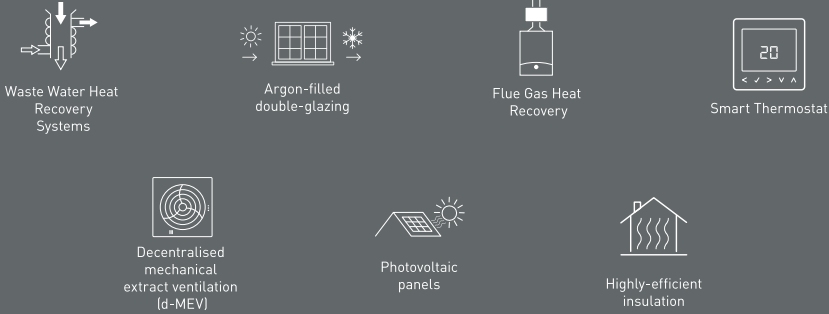
| | | | | | |
|------------|----|-----------------------|-----|----------------------|-----------------------|
| KEY | B | Boiler | f/f | Fridge/freezer space | ◀▶ Dimension location |
| | ST | Store | dw | Dishwasher space | |
| | wm | Washing machine space | fs | Fire Sprinkler | |



BARRATT
HOMES

BRENTFORD

3 BEDROOM SEMI-DETACHED HOME



Ground Floor

| | | |
|----------------|----------------|----------------|
| Kitchen/Dining | 3860 x 3597 mm | 12'8" x 11'10" |
| Family Room | 3860 x 3702 mm | 12'8" x 12'2" |
| WC | 1601 x 874 mm | 5'3" x 2'10" |

[Approximate dimensions]

First Floor

| | | |
|-----------|---------------|----------------|
| Lounge | 3860 x 3597mm | 12'8" x 11'10" |
| Bedroom 2 | 3860 x 3313mm | 12'8" x 10'10" |
| Bathroom | 1867 x 1701mm | 6'2" x 5'7" |

[Approximate dimensions]

Second Floor

| | | |
|-------------|---------------|----------------|
| Bedroom 1 | 4832 x 3860mm | 15'10" x 12'8" |
| Bedroom 3 | 3860 x 2800mm | 12'8" x 9'2" |
| Shower Room | 2315 x 1576mm | 7'7" x 5'2" |

[Approximate dimensions]

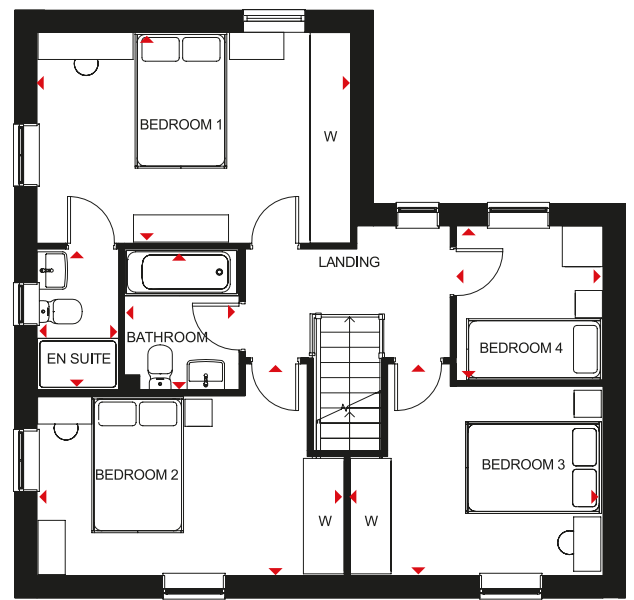
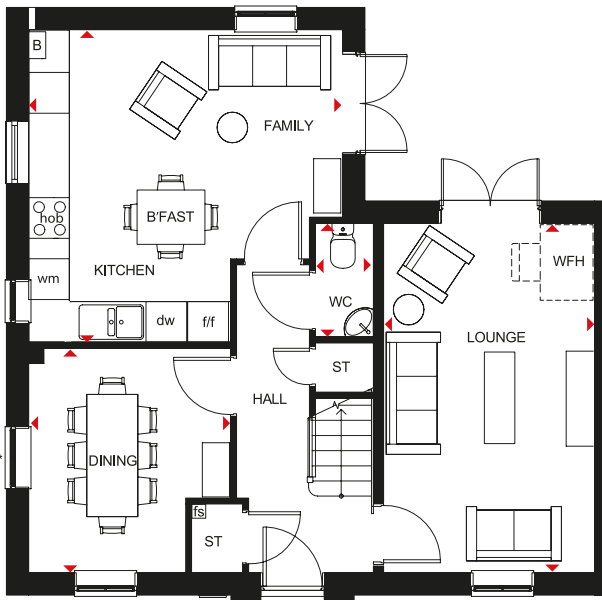
| | | | | | |
|------------|----|-----------------------|-----|----------------------|-----------------------|
| KEY | B | Boiler | f/f | Fridge/freezer space | ◀▶ Dimension location |
| | ST | Store | dw | Dishwasher space | |
| | wm | Washing machine space | fs | Fire Sprinkler | |



ALDERNEY

4 BEDROOM DETACHED HOME

- A large fitted kitchen with family and breakfast areas provides this spacious home with the ideal hub for all the family
- French doors leading to the rear garden from both the kitchen and the separate lounge give it a bright and airy feeling, and there is a separate dual-aspect dining room
- Upstairs are three double bedrooms, the main bedroom with en suite, a single bedroom and a family bathroom



Ground Floor

| | | |
|---------------------|----------------|----------------|
| Lounge | 3100 x 5148 mm | 10'2" x 16'11" |
| Kitchen/Family Room | 4623 x 4603 mm | 15'2" x 15'1" |
| Dining Room | 2972 x 3307 mm | 9'9" x 10'10" |
| WC | 854 x 1641 mm | 2'10" x 5'5" |

[Approximate dimensions]

First Floor

| | | |
|-----------|----------------|----------------|
| Bedroom 1 | 4623 x 3104 mm | 15'2" x 10'2" |
| En Suite | 1191 x 2075 mm | 3'11" x 6'10" |
| Bedroom 2 | 4510 x 3115 mm | 14'10" x 10'3" |
| Bedroom 3 | 3737 x 3115 mm | 12'3" x 10'3" |
| Bedroom 4 | 2148 x 2273 mm | 7'1" x 7'5" |
| Bathroom | 1702 x 2075 mm | 5'7" x 6'10" |

[Approximate dimensions]

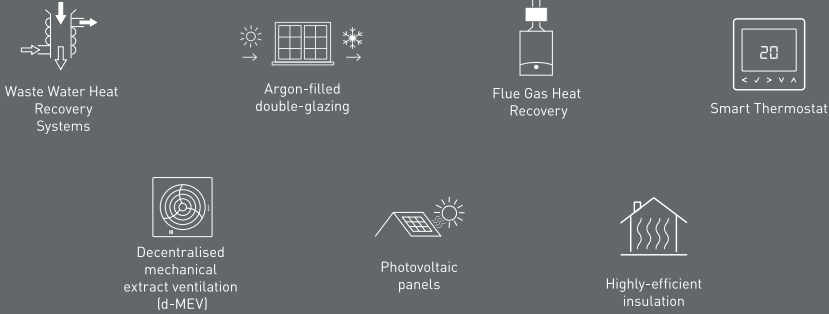
| | | | | | | |
|------------|----|-----------------------|-----|----------------------|-----|-------------------------|
| KEY | B | Boiler | f/f | Fridge/freezer space | W | Wardrobe space |
| | ST | Store | fs | Fire Sprinkler | WFH | Working from home space |
| | wm | Washing machine space | dw | Dishwasher space | ◀▶ | Dimension location |
| | | | | | | |



BARRATT
HOMES

ALDERNEY

4 BEDROOM DETACHED HOME



Ground Floor

| | | |
|--------------------------|----------------|----------------|
| Lounge | 5148 x 3110 mm | 16'11" x 10'2" |
| Kitchen/Family Breakfast | 4623 x 4603 mm | 15'2" x 15'1" |
| Dining | 3307 x 2972 mm | 10'10" x 9'9" |
| WC | 1675 x 853 mm | 5'6" x 2'10" |

[Approximate dimensions]

First Floor

| | | |
|-----------|----------------|----------------|
| Bedroom 1 | 4623 x 3104 mm | 15'2" x 10'2" |
| En Suite | 2075 x 1191 mm | 6'10" x 3'11" |
| Bedroom 2 | 4523 x 3115 mm | 14'10" x 10'3" |
| Bedroom 3 | 3724 x 3115 mm | 12'3" x 10'3" |
| Bedroom 4 | 2275 x 2163 mm | 7'6" x 7'1" |
| Bathroom | 2075 x 1702 mm | 6'10" x 5'7" |

[Approximate dimensions]

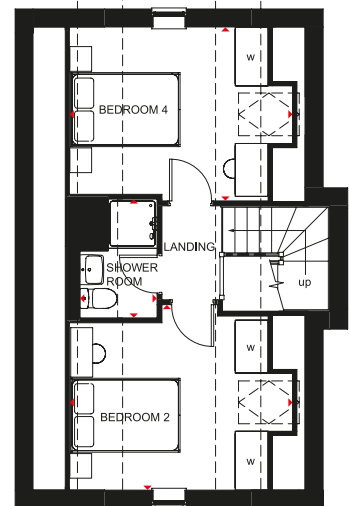
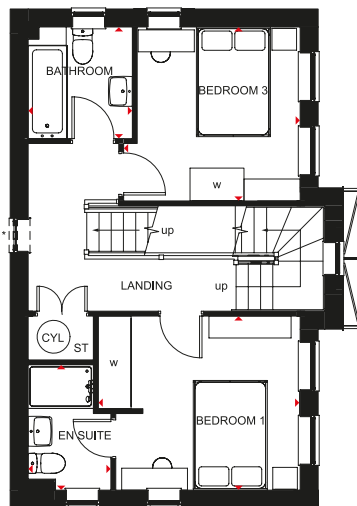
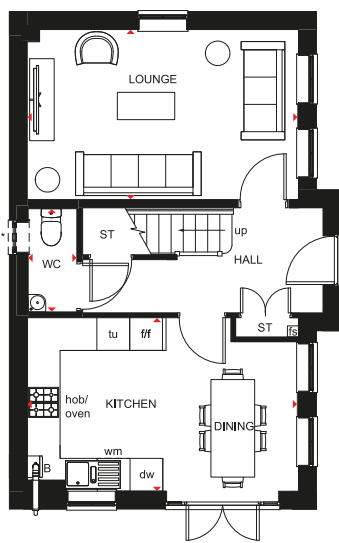
| | | | | |
|------------|----|-----------------------|-----|----------------------|
| KEY | B | Boiler | f/f | Fridge/freezer space |
| | ST | Store | dw | Dishwasher space |
| | wm | Washing machine space | ◀▶ | Dimension location |



HESKETH DETACHED

4 BEDROOM DETACHED HOME

- Good-sized detached home designed over three floors
- Bright, open-plan fitted kitchen with dining area leads to the garden, while a spacious lounge provides room to relax
- Upstairs are two double bedrooms, the main bedroom with en suite, and the family bathroom
- Two further double bedrooms and a shower room are on the second floor



Ground Floor

| | | |
|----------------|---------------|---------------|
| Lounge | 4963 x 3113mm | 16'3" x 10'3" |
| Kitchen/Dining | 4963 x 3175mm | 16'3" x 10'5" |
| WC | 925 x 1923mm | 3'0" x 6'4" |

[Approximate dimensions]
* Window may be omitted on certain plots. Speak to a Sales Adviser for details on individual plots

First Floor

| | | |
|-----------|---------------|---------------|
| Bedroom 1 | 3684 x 3175mm | 12'1" x 10'5" |
| En Suite | 1511 x 2287mm | 4'11" x 7'6" |
| Bedroom 3 | 3220 x 3175mm | 10'7" x 10'5" |
| Bathroom | 1903 x 2038mm | 6'3" x 6'8" |

[Approximate dimensions]
* Window may be omitted on certain plots. Speak to a Sales Adviser for details on individual plots

Second Floor

| | | |
|--------------|---------------|---------------|
| Bedroom 2* | 4076 x 3382mm | 13'4" x 11'1" |
| Bedroom 4* | 4076 x 3175mm | 13'4" x 10'5" |
| Shower room* | 1410 x 2168mm | 4'8" x 7'1" |

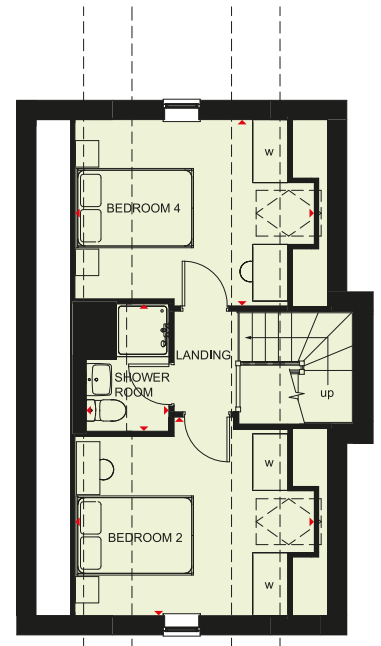
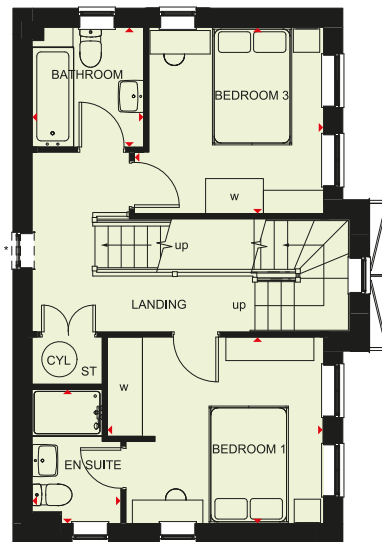
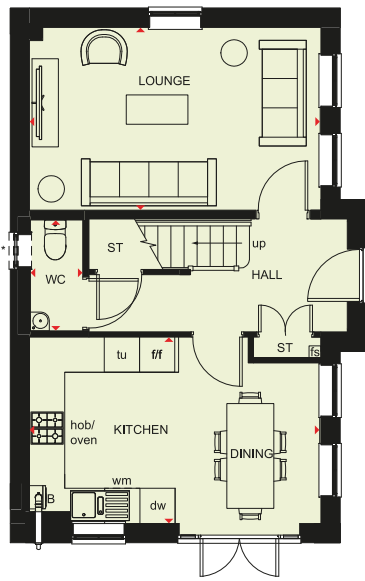
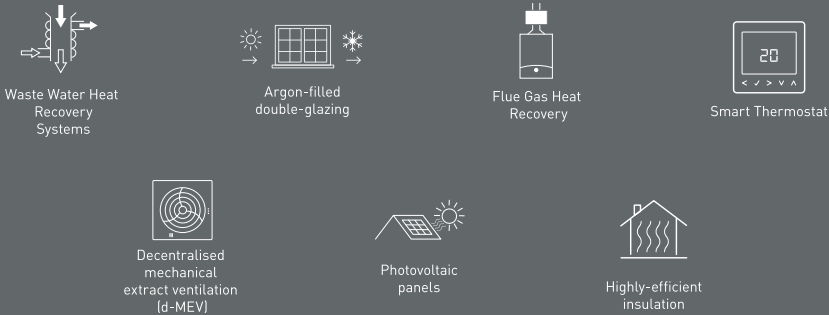
[Approximate dimensions]
* Lowered ceiling heights

| | | | | | | | | | | |
|------------|----|--------|-----|-----------------------|-----|----------------------|----|------------------|----|--------------------|
| KEY | B | Boiler | CYL | Cylinder | f/f | Fridge/freezer space | dw | Dishwasher space | tu | Tall unit |
| | ST | Store | wm | Washing machine space | fs | Fire Sprinkler | w | Wardrobe space | ◀▶ | Dimension location |



HESKETH DETACHED

4 BEDROOM DETACHED HOME



Ground Floor

| | | |
|----------------|---------------|---------------|
| Lounge | 4963 x 3113mm | 16'3" x 10'3" |
| Kitchen/Dining | 4963 x 3175mm | 16'3" x 10'5" |
| WC | 925 x 1923mm | 3'0" x 6'4" |

[Approximate dimensions]
* Window may be omitted on certain plots. Speak to a Sales Adviser for details on individual plots

First Floor

| | | |
|-----------|---------------|---------------|
| Bedroom 1 | 3684 x 3175mm | 12'1" x 10'5" |
| En Suite | 1511 x 2287mm | 4'11" x 7'6" |
| Bedroom 3 | 3220 x 3175mm | 10'7" x 10'5" |
| Bathroom | 1903 x 2038mm | 6'3" x 6'8" |

[Approximate dimensions]
* Window may be omitted on certain plots. Speak to a Sales Adviser for details on individual plots

Second Floor

| | | |
|--------------|---------------|---------------|
| Bedroom 2* | 4076 x 3382mm | 13'4" x 11'1" |
| Bedroom 4* | 4076 x 3175mm | 13'4" x 10'5" |
| Shower room* | 1410 x 2168mm | 4'8" x 7'1" |

[Approximate dimensions]
* Lowered ceiling heights

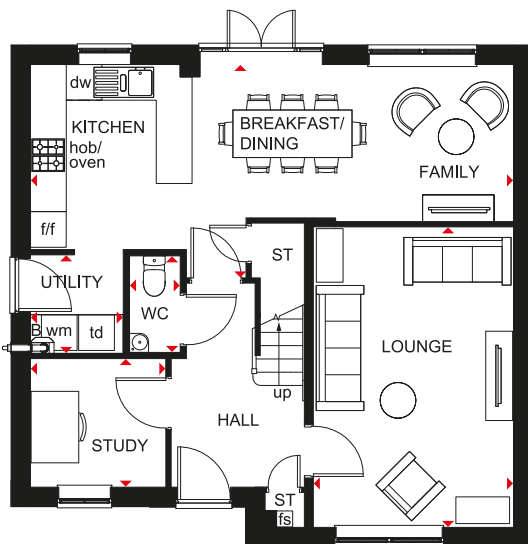
| | | | | | | | | | | |
|------------|----|--------|-----|-----------------------|-----|----------------------|----|------------------|----|--------------------|
| KEY | B | Boiler | CYL | Cylinder | f/f | Fridge/freezer space | dw | Dishwasher space | tu | Tall unit |
| | ST | Store | wm | Washing machine space | fs | Fire Sprinkler | w | Wardrobe space | ◀▶ | Dimension location |



RADLEIGH

4 BEDROOM DETACHED HOME

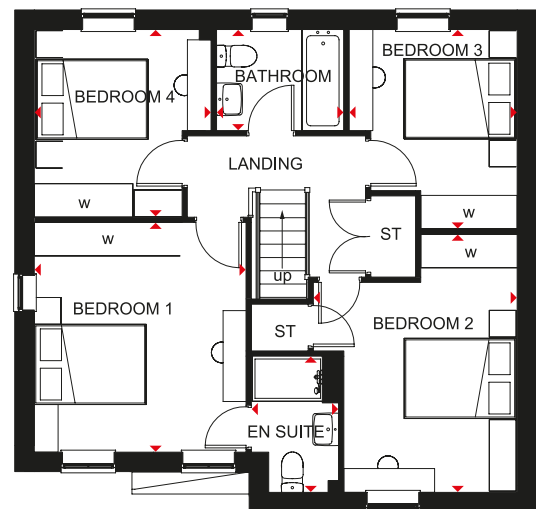
- A bright and airy family home
- The large open-plan kitchen has dining and family areas and French doors leading to the garden. There is also a separate utility room
- A spacious lounge and separate study are also on the ground floor
- Upstairs are four double bedrooms, the main bedroom with en suite shower room, and a family bathroom



Ground Floor

| | | |
|---------------------------|----------------|---------------|
| Lounge | 3361 x 5046 mm | 11'0" x 16'7" |
| Kitchen/ Dining/Family | 8110 x 3583 mm | 26'7" x 11'9" |
| Utility | 1558 x 1655 mm | 5'1" x 5'5" |
| Study | 2273 x 2158 mm | 7'5" x 7'1" |
| WC | 867 x 1638 mm | 2'10" x 5'4" |

[Approximate dimensions]



First Floor

| | | |
|-----------|----------------|---------------|
| Bedroom 1 | 3570 x 3858 mm | 11'9" x 12'8" |
| En Suite | 1452 x 2289 mm | 4'9" x 7'6" |
| Bedroom 2 | 3423 x 4335 mm | 11'3" x 14'3" |
| Bedroom 3 | 2824 x 3350 mm | 9'3" x 11'0" |
| Bedroom 4 | 2973 x 3152 mm | 9'9" x 10'4" |
| Bathroom | 2137 x 1699 mm | 7'0" x 5'7" |

[Approximate dimensions]

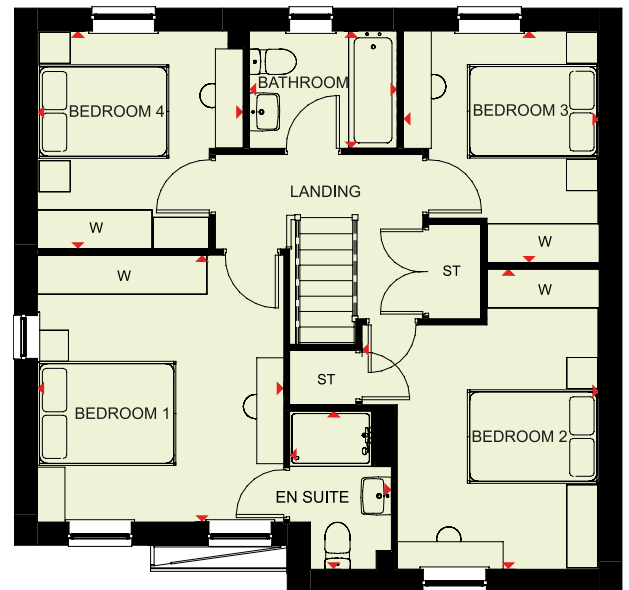
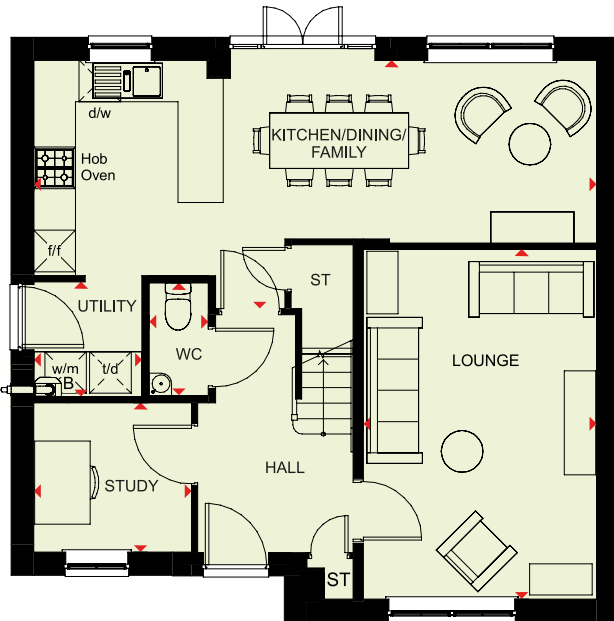
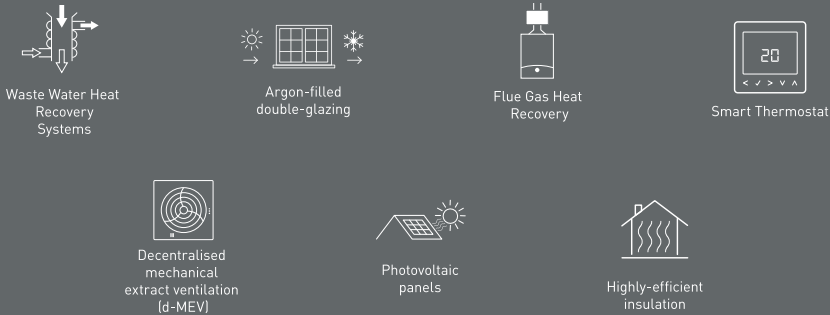
| | | | | | | |
|------------|----|-----------------------|-----|----------------------|----|--------------------|
| KEY | B | Boiler | f/f | Fridge/freezer space | td | Tumble dryer space |
| | ST | Store | fs | Fire Sprinkler | w | Wardrobe space |
| | wm | Washing machine space | dw | Dishwasher space | ◀▶ | Dimension location |



BARRATT
HOMES

RADLEIGH

4 BEDROOM HOME



Ground Floor

| | | |
|-----------------------|----------------|---------------|
| Lounge | 3361 x 5041mm | 11'0" x 16'6" |
| Kitchen/Dining/Family | 8110 x 3578 mm | 26'7" x 11'9" |
| Study | 2273 x 2153 mm | 7'5" x 7'1" |
| Utility | 1558 x 1655 mm | 5'1" x 5'5" |
| WC | 850 x 1621 mm | 2'9" x 5'4" |

First Floor

| | | |
|-----------|----------------|---------------|
| Bedroom 1 | 3557 x 3853mm | 11'8" x 12'8" |
| En Suite | 1465 x 2287 mm | 4'10" x 7'6" |
| Bedroom 2 | 3423 x 4335 mm | 11'3" x 14'3" |
| Bedroom 3 | 2824 x 3345 mm | 9'3" x 11'0" |
| Bedroom 4 | 2973 x 3147 mm | 9'9" x 10'4" |
| Bathroom | 2137 x 1694 mm | 7'0" x 5'7" |

| | | | | | | |
|------------|----|-----------------------|-----|----------------------|----|--------------------|
| KEY | B | Boiler | dw | Dishwasher space | w | Wardrobe space |
| | ST | Store | f/f | Fridge/freezer space | ◀▶ | Dimension location |
| | wm | Washing machine space | td | Tumble dryer space | | |

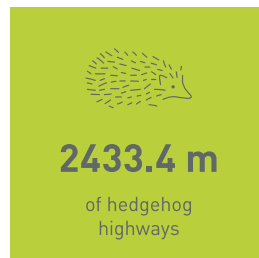
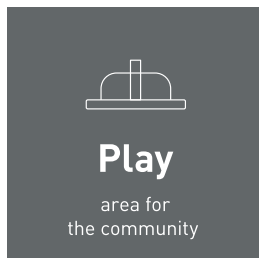
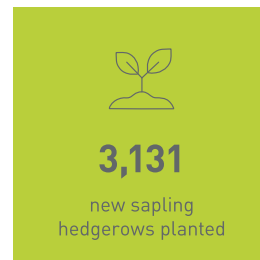
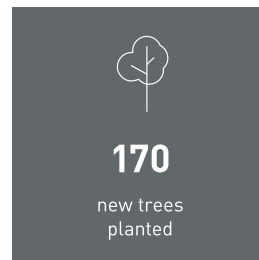
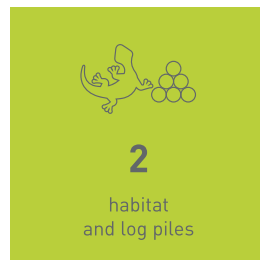
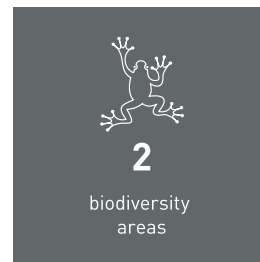


CREATING A SUSTAINABLE COMMUNITY WHERE FAMILIES AND NATURE CAN THRIVE

At Barratt Homes, we do more than simply craft beautiful homes and desirable developments.

We design and build great places that meet the highest standards, and that promote sustainable, healthy and happy living for our customers.

We know we must give our customers confidence that their homes are designed and built to meet the challenges of the future. We do this through creating places where people and nature can thrive.



NEW HOMES QUALITY CODE

Housebuilders and developers who build new homes will be expected to register with the New Homes Quality Board (NHQB). As long as a housebuilder or developer has followed the correct registration process, including completing the necessary training, introducing a complaints procedure, and following other processes and procedures that are needed to meet the requirements of this New Homes Quality Code (the code), they will become a registered developer.

Registered developers agree to follow the code and the New Homes Ombudsman Service, including accepting the decisions of the New Homes Ombudsman in relation to dealings with customers. If a registered developer does not meet the required standards, or fails to accept and act in line with the decisions of the New Homes Ombudsman, they may have action taken against them, including being removed from the register of registered developers.

The code sets out the requirements that registered developers must meet. The code may be updated from time to time to reflect changes to industry best practice as well as the decisions of the New Homes Ombudsman Service.

All homes built by registered developers must meet building-safety and other regulations. All registered developers should aim to make sure there are no snags or defects in their properties before the keys are handed over to a customer. If there are any snags or defects, these should be put right within the agreed timescales.

WHAT THE CODE COVERS

For the purposes of this code, 'customer' means a person who is buying or intends to buy a new home which they will live in or give to another person. (If a new home is being bought in joint names, 'the customer' includes all the joint customers.) However, the New Homes Quality Board have also started work to consider other groups of customers and what they should be able to expect from a new home. This includes shared owners and people who are buying a new home to let to other people. Any changes the New Homes Quality Board make to the code to reflect the needs of other groups of customers will be developed through consultation, and they will continually assess and review the effectiveness of the code, and any new laws or regulations that apply. Other areas which are not covered by the code are claims for loss of property value or blight (where a property falls in value or becomes difficult to sell because of major public work in the area), personal injury or claims that are not covered by the scheme rules of the New Homes Ombudsman Service.



barratthomes.co.uk

0333 355 8476

Calls to 03 numbers are charged at the same rate as dialling an 01 or 02 number. If your fixed line or mobile service has inclusive minutes to 01/02 numbers, then calls to 03 are counted as part of this inclusive call volume. Non-BT customers and mobile phone users should contact their service providers for information about the cost of calls.



BARRATT
— HOMES —