

# BURTON WOODS PHASE 5

ROSEDALE, SPENNYMOOR, DURHAM DL16 6SB



2, 3 & 4 BEDROOM HOMES

# BURTON WOODS PHASE 5

## DEVELOPMENT LAYOUT



### Phase 5

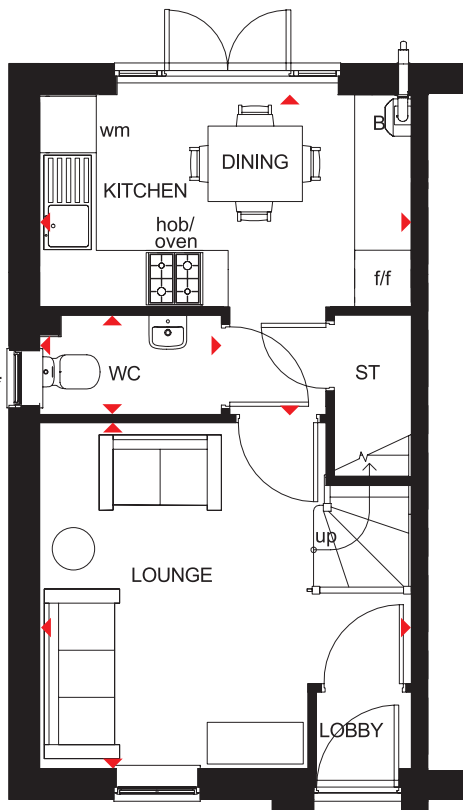
Ad	ALDERNEY	4 bedroom detached house
Win	WINDERMERE	4 bedroom detached house
Che	CHESTER	4 bedroom detached house
Bu	BUCHANAN	3 bedroom detached house
Der	DERWENT	3 bedroom detached house
Db	DENBY	3 bedroom detached house
No	NORBURY	3 bedroom semi-detached house
Pa	PALMERSTON	3 bedroom semi-detached house
Mb	MORESBY	3 bedroom detached / semi-detached house
Ma	MAIDSTONE	3 bedroom semi-detached / terraced house
El	ELLERTON	3 bedroom semi-detached / terraced house
KnL	KENLEY	2 bedroom semi-detached / terraced house
Df	DENFORD	2 bedroom semi-detached / terraced house



2 BEDROOM TERRACED HOME



- Natural light floods through oversized windows in this two bedroom terraced home
- French doors in the open-plan kitchen and dining area lead to the garden
- A front-aspect lounge and convenient storage space create a great place for modern living
- On the first floor are two double bedrooms and a family bathroom

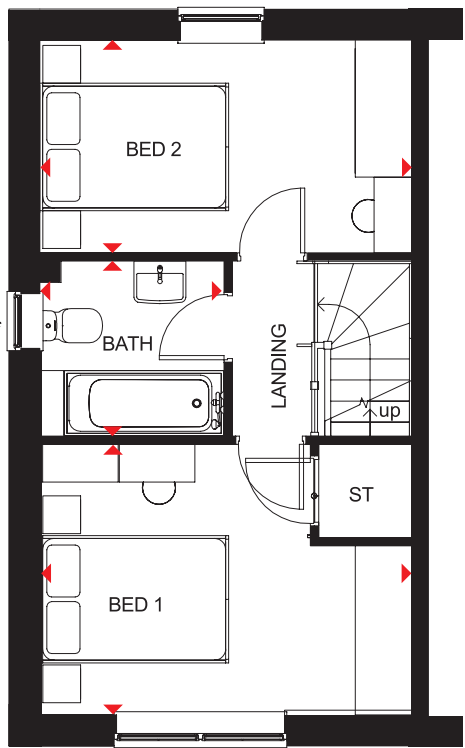


Ground Floor

Lounge	3943 x 3668mm	12'11" x 12'0"
Kitchen/Dining	3943 x 3454mm	12'11" x 11'4"
WC	1888 x 1050mm	6'2" x 3'5"

(Approximate dimensions)

\* Window may be omitted on certain plots. Speak to a Sales Adviser for details on individual plots.



First Floor

Bedroom 1	3943 x 2865mm	12'11" x 9'5"
Bedroom 2	3943 x 2316mm	12'11" x 7'7"
Bathroom	1953 x 1853mm	6'5" x 6'1"

(Approximate dimensions)

\* Window may be omitted on certain plots. Speak to a Sales Adviser for details on individual plots.

**KEY** B Boiler  
ST Store  
wm Washing machine space

f/f Fridge/freezer space  
◀▶ Dimension location

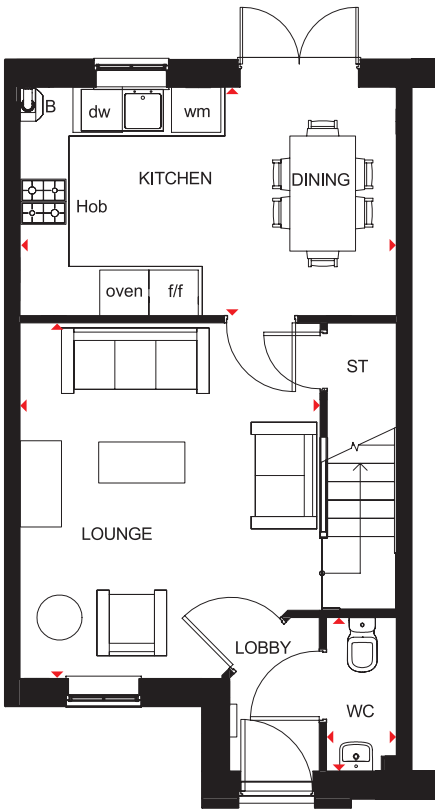


# PALMERSTON

## 3 BEDROOM HOME



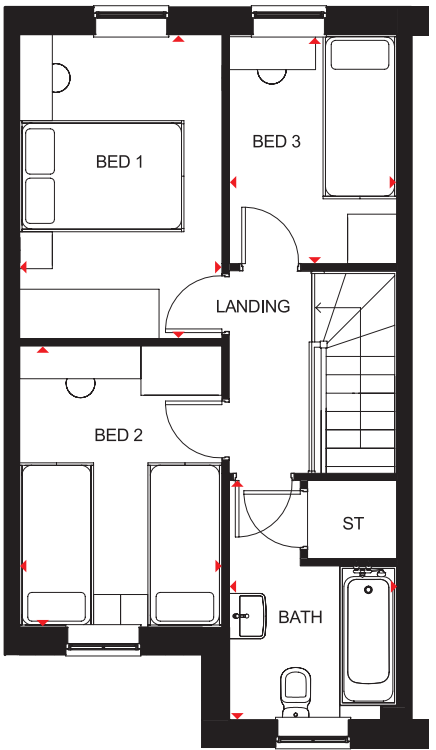
- Natural light streams through oversized windows in this attractive home
- A spacious open-plan kitchen and dining area, with French doors leading to the rear garden, creates the ideal hub for all the family
- A good-sized front-aspect lounge is just perfect for relaxing in
- Upstairs are two double bedrooms, a single bedroom and family bathroom with convenient storage space



### Ground Floor

Lounge	3700 x 4416mm	12'2" x 14'6"
Kitchen/Dining	4590 x 2706mm	15'1" x 8'11"
WC	1956 x 856mm	6'5" x 2'10"

(Approximate dimensions)



### First Floor

Bedroom 1	3700 x 2462mm	12'2" x 8'1"
Bedroom 2	3422 x 2462mm	11'3" x 8'1"
Bedroom 3	2706 x 2041mm	8'11" x 6'8"
Bathroom	2913 x 2041mm	9'7" x 6'8"

(Approximate dimensions)

<b>KEY</b>	B	Boiler	f/f	Fridge/freezer space
	ST	Store	dw	Dishwasher space
	wm	Washing machine space	◀▶	Dimension location

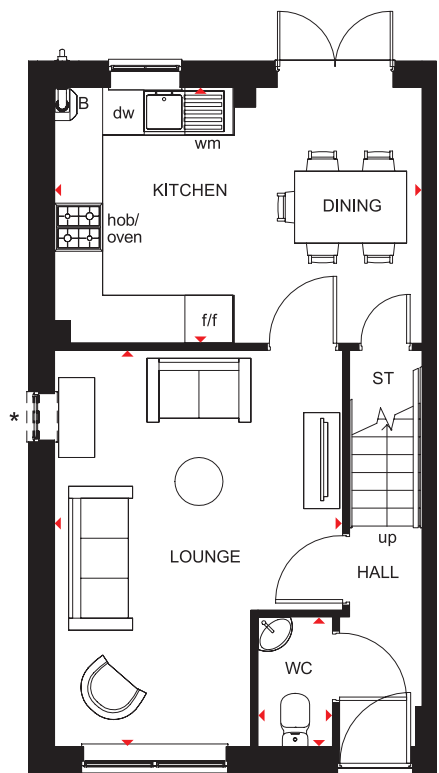


# MAIDSTONE

## 3 BEDROOM HOME



- An ideal family home designed with plenty of space for modern living
- The ground floor comprises a good-sized lounge and an open-plan kitchen with dining area and French doors leading to the garden
- The first floor has two double bedrooms – the generous main bedroom with en suite – a single bedroom and family bathroom

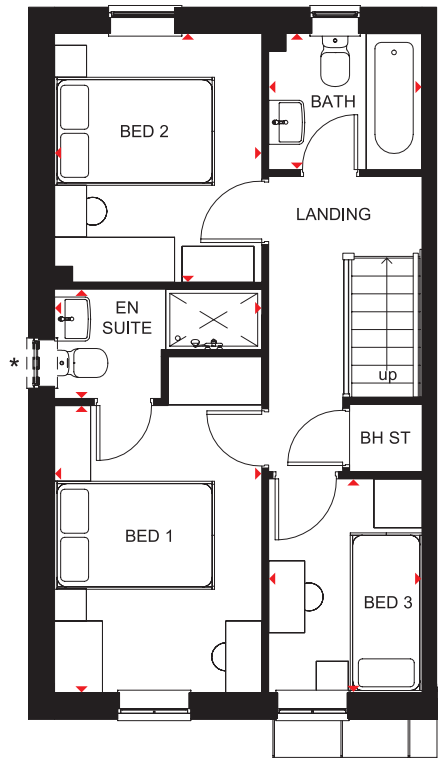


### Ground Floor

Lounge	4955 x 3604mm	16'3" x 11'10"
Kitchen/Dining	3202 x 4598mm	10'6" x 15'1"
WC	932 x 1620mm	3'1" x 5'4"

(Approximate dimensions)

\*Optional window



### First Floor

Bedroom 1	4204 x 2592mm	13'10" x 8'6"
En Suite	1365 x 2592mm	4'6" x 8'6"
Bedroom 2	3112 x 2592mm	10'3" x 8'6"
Bedroom 3	1918 x 2676mm	6'4" x 8'9"
Bathroom	1918 x 1702mm	6'4" x 5'7"

(Approximate dimensions)

\*Optional window

<b>KEY</b>	B	Boiler	f/f	Fridge/freezer space
	ST	Store	dw	Dishwasher space
	wm	Washing machine space	◀▶	Dimension location

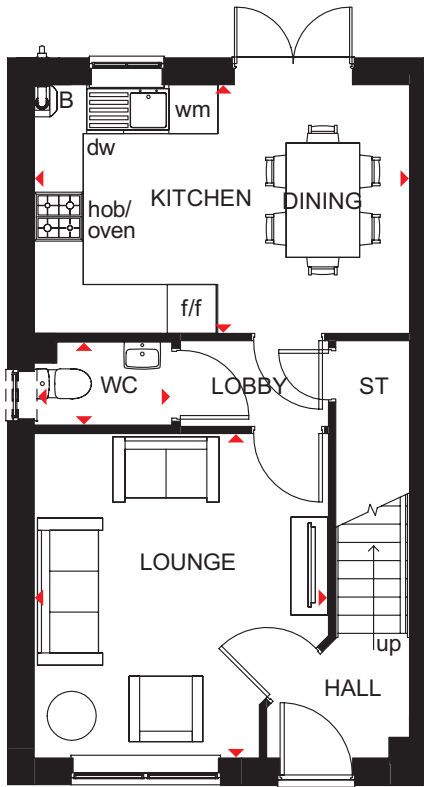


# ELLERTON

## 3 BEDROOM TERRACED HOME



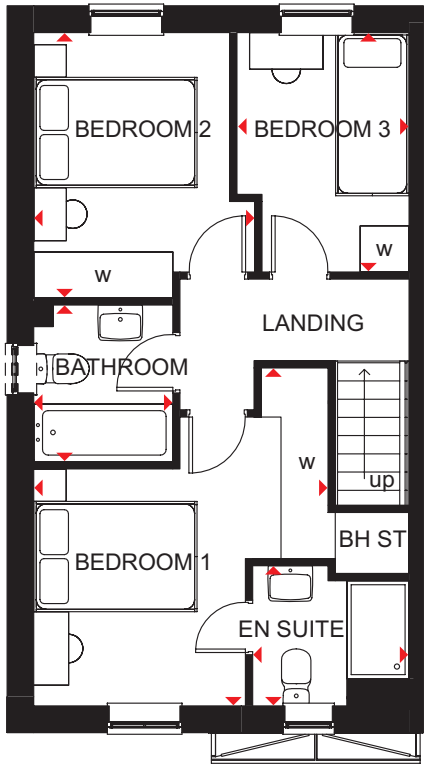
- Bright, practical home, ideal for modern family living
- Large, open-plan kitchen with ample dining space has French doors leading to the rear garden
- Good-sized lounge for all the family to relax in
- Upstairs, the main bedroom has an en suite shower room, and there is a further double bedroom, a single bedroom and a family bathroom



### Ground Floor

Lounge	3605 x 3972mm	11'10" x 13'0"
Kitchen/Dining	4598 x 3048mm	15'1" x 10'0"
WC	1703 x 1050mm	5'7" x 3'5"

[Approximate dimensions]



### First Floor

Bedroom 1	3605 x 4138mm	11'10" x 13'7"
En Suite	1918 x 1716mm	6'4" x 5'8"
Bedroom 2	2708 x 3250mm	8'11" x 10'8"
Bedroom 3	2109 x 2932mm	6'11" x 9'7"
Bathroom	1703 x 1917mm	5'7" x 6'3"

[Approximate dimensions]

KEY	B	Boiler	wm	Washing machine space	w	Wardrobe space
	ST	Store	f/f	Fridge/freezer space	◀▶	Dimension location
	BH ST	Bulkhead store	dw	Dishwasher space		

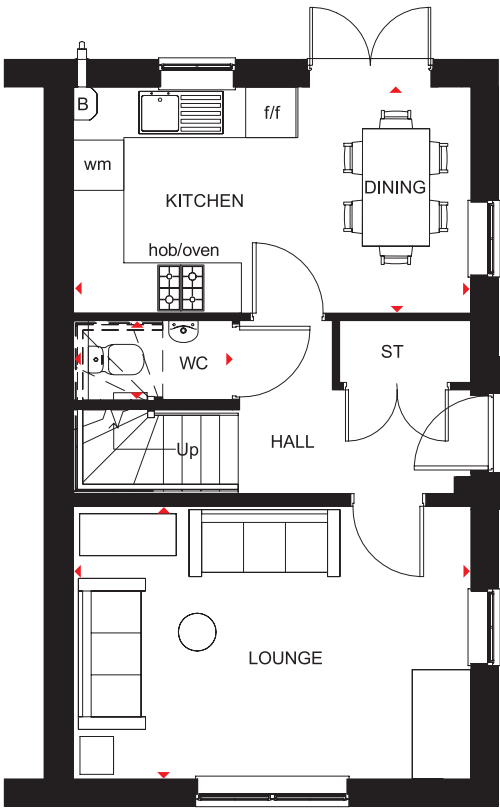


# MORESBY

## 3 BEDROOM HOME



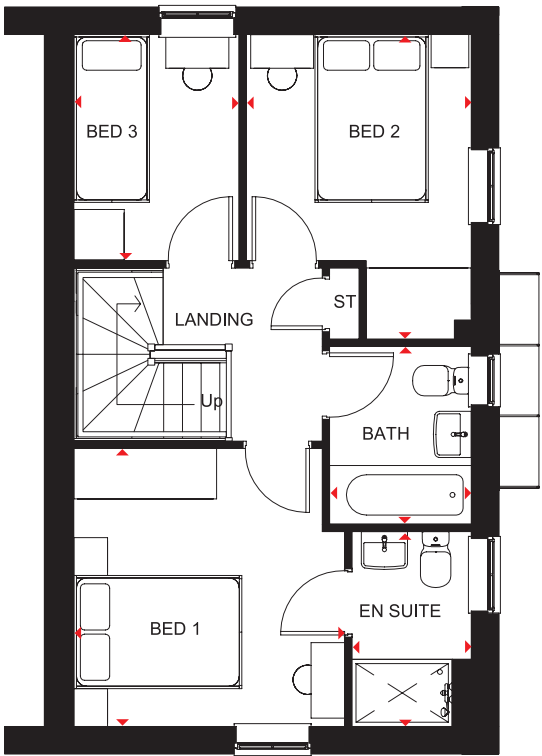
- A bright family home full of light and plenty of space
- The ground floor comprises a dual-aspect lounge and an open-plan kitchen with dining area opening onto the garden
- The first floor accommodates two double bedrooms, the main bedroom with en suite, a single bedroom and family bathroom



### Ground Floor

Lounge	4737 x 3250mm	15'6" x 10'8"
Kitchen/Dining	4737 x 2696mm	15'6" x 8'10"
WC	1891 x 945mm	6'2" x 3'1"

(Approximate dimensions)



### First Floor

Bedroom 1	3229 x 3312mm	10'7" x 10'10"
En Suite	2322 x 1421mm	7'7" x 4'8"
Bedroom 2	2682 x 3628mm	8'10" x 11'11"
Bedroom 3	2696 x 1968mm	8'10" x 6'5"
Bathroom	2120 x 1688mm	6'11" x 5'6"

(Approximate dimensions)

<b>KEY</b>	B	Boiler	f/f	Fridge/freezer space
	ST	Store	◀▶	Dimension location
	wm	Washing machine space		

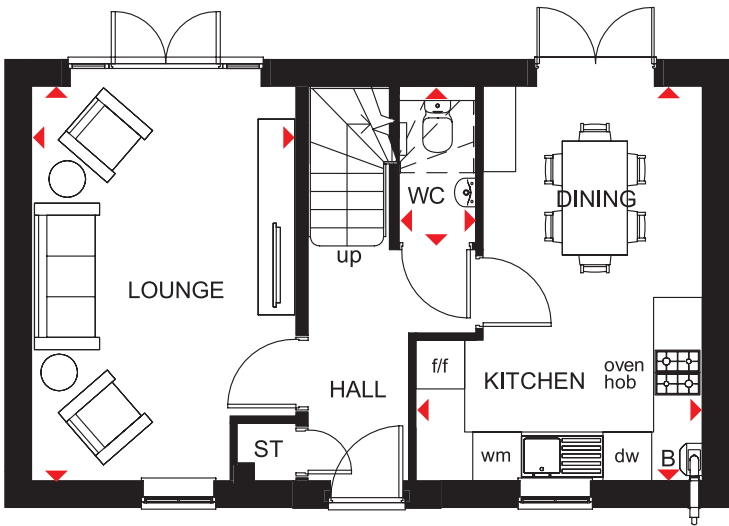


# BUCHANAN

## 3 BEDROOM DETACHED HOME



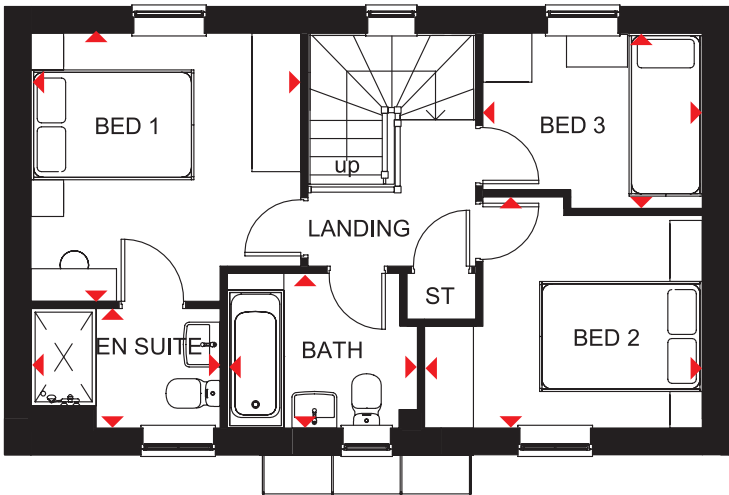
- A three bedroom home offering open-plan kitchen and dining area with French doors opening onto the rear garden
- Well-proportioned lounge with French doors leading to the garden
- First floor features two double bedrooms with en suite to main bedroom, single bedroom and family bathroom



### Ground Floor

Lounge	4848 x 3250mm	15'11" x 10'8"
Kitchen/Dining	3521 x 4848mm	11'7" x 15'11"
WC	1921 x 943mm	6'4" x 3'1"

(Approximate dimensions)



### First Floor

Bedroom 1	3312 x 3292mm	10'10" x 10'10"
En Suite	2322 x 1468mm	7'7" x 4'10"
Bedroom 2	3413 x 2836mm	11'2" x 9'4"
Bedroom 3	2696 x 2150mm	8'10" x 7'1"
Bathroom	2335 x 1900mm	7'8" x 6'3"

(Approximate dimensions)

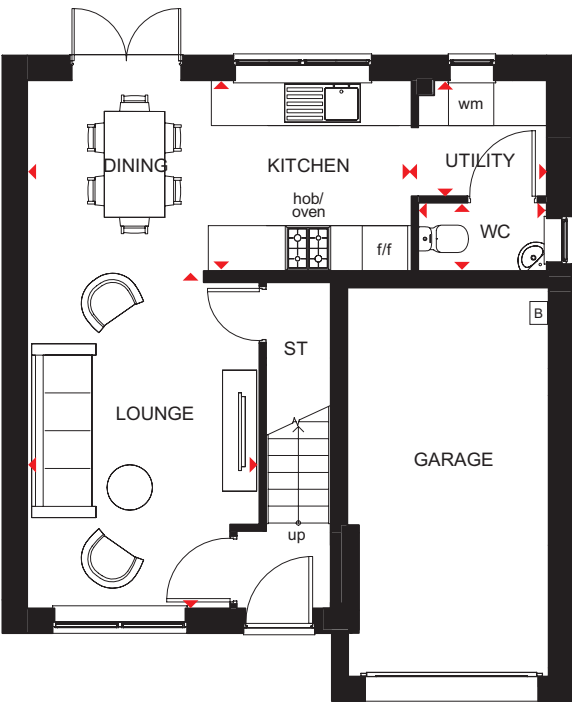
KEY	B	Boiler	f/f	Fridge/freezer space
	ST	Store	dw	Dishwasher space
	wm	Washing machine space	◀▶	Dimension location



3 BEDROOM DETACHED HOME



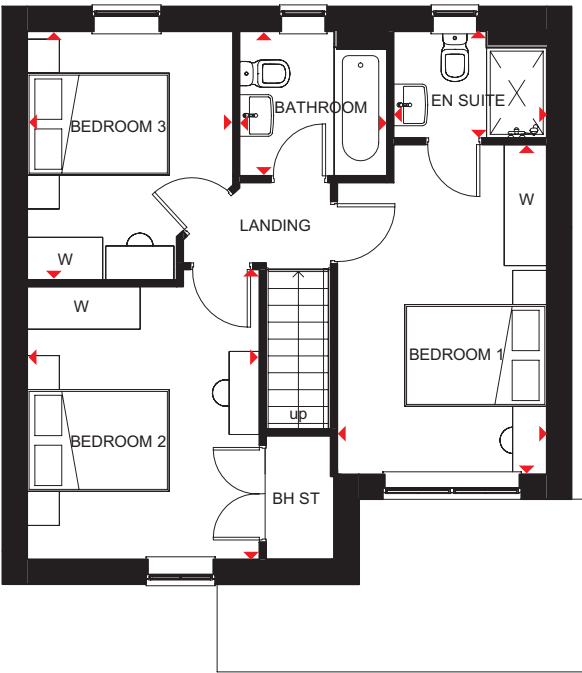
- Free-flowing living space creates a flexible family home
- Large windows and French doors to the rear garden give the open-plan lounge, dining area, kitchen and utility a bright and airy feeling
- Integral garage adds convenience and security
- Upstairs are three double bedrooms – the main bedroom with en suite – and the family bathroom



Ground Floor

Lounge	3072 x 4462mm	10'1" x 14'8"
Kitchen/Dining	5085 x 2523mm	16'8" x 8'3"
Utility	1789 x 1533mm	5'10" x 5'0"
WC	1701 x 903mm	5'7" x 3'0"

(Approximate dimensions)



First Floor

Bedroom 1	2770 x 4361mm	9'1" x 14'4"
En Suite	2026 x 1412mm	6'8" x 4'8"
Bedroom 2	3072 x 3834mm	10'1" x 12'7"
Bedroom 3	2722 x 3289mm	8'11" x 10'9"
Bathroom	1950 x 1913mm	6'5" x 6'3"

(Approximate dimensions)

- KEY

B

ST

wm

Boiler

Store

Washing machine space
- f/f

w

Fridge/freezer space

Wardrobe

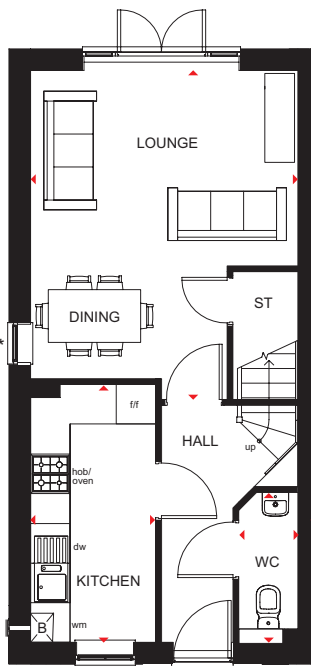


# NORBURY

## 3 BEDROOM HOME



- Bright and spacious family home, designed over three floors
- Open-plan lounge with dining area leading to the rear garden through French doors
- Front-aspect, stylish fitted kitchen
- Two double bedrooms and a family bathroom on the first floor
- Large main bedroom with en suite and dressing area takes up the entire top floor

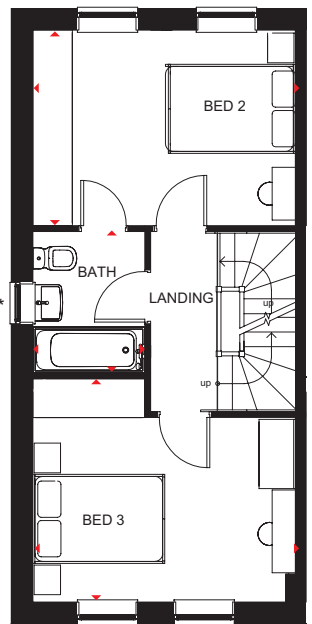


### Ground Floor

Lounge/Dining	4056 x 4991mm	13'4" x 16'4"
Kitchen	3910 x 1900mm	12'10" x 6'3"
WC	897 x 2272mm	2'11" x 7'5"

[Approximate dimensions]

\* Window may be omitted on certain plots. Speak to a Sales Adviser for details on individual plots.

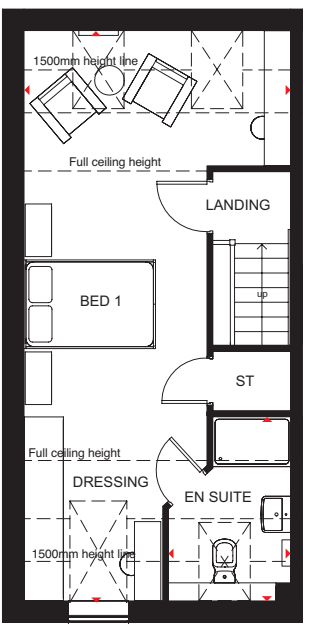


### First Floor

Bedroom 2	2965 x 4056mm	9'9" x 13'4"
Bedroom 3	3386 x 4056mm	11'1" x 13'4"
Bathroom	2146 x 1698mm	7'0" x 5'7"

[Approximate dimensions]

\* Window may be omitted on certain plots. Speak to a Sales Adviser for details on individual plots.



### Second Floor

Bedroom 1/ Dressing Area	4056 x 8673mm	13'4" x 28'5"
En Suite	1858 x 2799mm	6'1" x 9'2"

[Approximate dimensions]

<b>KEY</b>	B	Boiler	f/f	Fridge/freezer space
	ST	Store	dw	Dishwasher space
	wm	Washing machine space	◀▶	Dimension location

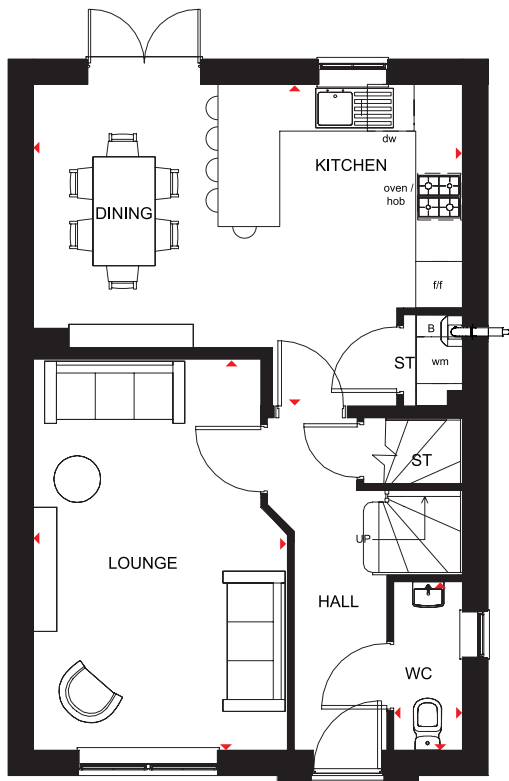


# CHESTER

## 4 BEDROOM DETACHED HOME



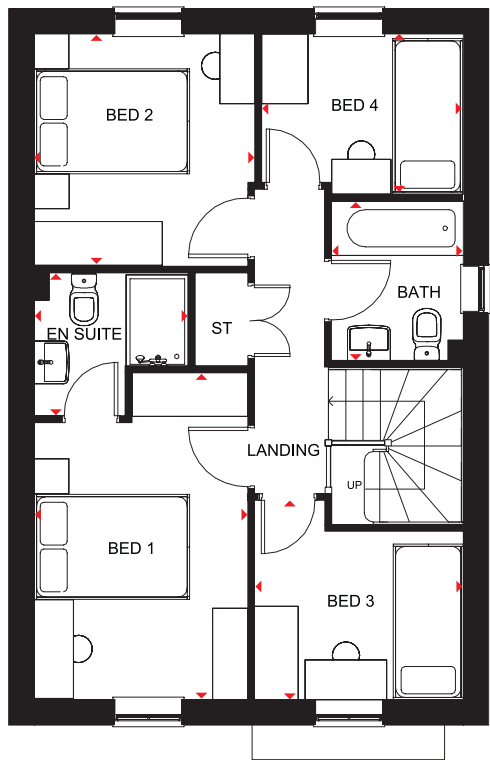
- An ideal family home filled with light through oversized windows
- The large kitchen with dining area and French doors onto the rear garden is a great hub for both the family and to entertain
- The spacious lounge is the perfect place for relaxing in
- Upstairs are two double bedrooms, the main bedroom with en suite, two single bedrooms and a family bathroom



### Ground Floor

Lounge	5026 x 3269mm	16'6" x 10'9"
Kitchen/Dining	5520 x 4135mm	18'1" x 13'7"
WC	2164 x 886mm	7'1" x 2'11"

(Approximate dimensions)



### First Floor

Bedroom 1	4205 x 2746mm	13'10" x 9'0"
En Suite	1983 x 1835mm	6'6" x 6'0"
Bedroom 2	2986 x 2826mm	9'10" x 9'3"
Bedroom 3	2686 x 2537mm	8'10" x 8'4"
Bedroom 4	2606 x 2060mm	8'7" x 6'9"
Bathroom	2048 x 1698mm	6'9" x 5'7"

(Approximate dimensions)

### KEY

B Boiler  
ST Store  
wm Washing machine space

f/f Fridge/freezer space  
dw Dishwasher space  
◀▶ Dimension location

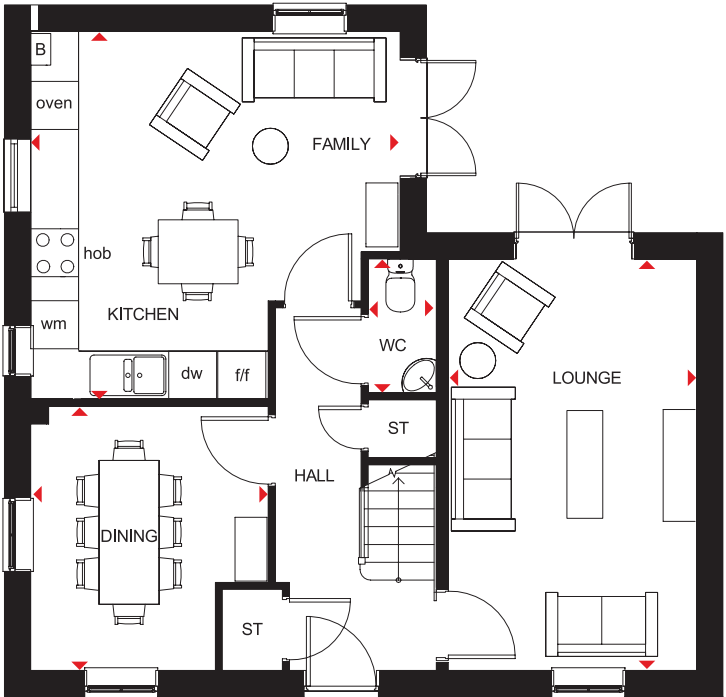


# ALDERNEY

## 4 BEDROOM DETACHED HOME



- A large fitted kitchen with family and breakfast areas provides this spacious home with the ideal hub for all the family
- French doors leading to the rear garden from both the kitchen and the separate lounge give it a bright and airy feeling, and there is a separate dual-aspect dining room
- Upstairs are three double bedrooms, the main bedroom with en suite, a single bedroom and a family bathroom



### Ground Floor

Lounge	5148 x 3110mm	16'11" x 10'2"
Kitchen/Family	4623 x 4603mm	15'2" x 15'1"
Dining	3307 x 2972mm	10'10" x 9'9"
WC	1675 x 853mm	5'6" x 2'10"

(Approximate dimensions)



### First Floor

Bedroom 1	4623 x 3104mm	15'2" x 10'2"
En Suite	2075 x 1191mm	6'10" x 3'11"
Bedroom 2	4523 x 3115mm	14'10" x 10'3"
Bedroom 3	3724 x 3115mm	12'3" x 10'3"
Bedroom 4	2275 x 2163mm	7'6" x 7'1"
Bathroom	2075 x 1702mm	6'10" x 5'7"

(Approximate dimensions)

**KEY**

B	Boiler
ST	Store
wm	Washing machine space

f/f	Fridge/freezer space
dw	Dishwasher space
◀▶	Dimension location



# NEW HOMES QUALITY CODE

Housebuilders and developers who build new homes will be expected to register with the New Homes Quality Board (NHQB). As long as a housebuilder or developer has followed the correct registration process, including completing the necessary training, introducing a complaints procedure, and following other processes and procedures that are needed to meet the requirements of this New Homes Quality Code (the code), they will become a registered developer.

Registered developers agree to follow the code and the New Homes Ombudsman Service, including accepting the decisions of the New Homes Ombudsman in relation to dealings with customers. If a registered developer does not meet the required standards, or fails to accept and act in line with the decisions of the New Homes Ombudsman, they may have action taken against them, including being removed from the register of registered developers.

The code sets out the requirements that registered developers must meet. The code may be updated from time to time to reflect changes to industry best practice as well as the decisions of the New Homes Ombudsman Service.

All homes built by registered developers must meet building-safety and other regulations. All registered developers should aim to make sure there are no snags or defects in their properties before the keys are handed over to a customer. If there are any snags or defects, these should be put right within the agreed timescales.

## WHAT THE CODE COVERS

For the purposes of this code, ‘customer’ means a person who is buying or intends to buy a new home which they will live in or give to another person. (If a new home is being bought in joint names, ‘the customer’ includes all the joint customers.) However, the New Homes Quality Board have also started work to consider other groups of customers and what they should be able to expect from a new home. This includes shared owners and people who are buying a new home to let to other people. Any changes the New Homes Quality Board make to the code to reflect the needs of other groups of customers will be developed through consultation, and they will continually assess and review the effectiveness of the code, and any new laws or regulations that apply. Other areas which are not covered by the code are claims for loss of property value or blight (where a property falls in value or becomes difficult to sell because of major public work in the area), personal injury or claims that are not covered by the scheme rules of the New Homes Ombudsman Service.





barratthomes.co.uk

0333 355 8470

We\* are the only major national housebuilder to be awarded this key industry award 11 years running. Calls to 03 numbers are charged at the same rate as dialling an 01 or 02 number. If your fixed line or mobile service has inclusive minutes to 01/02 numbers, then calls to 03 are counted as part of this inclusive call volume. Non-BT customers and mobile phone users should contact their service providers for information about the cost of calls.

