





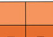
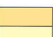







PARC FFERM WEN
ST ATHAN



DAVID WILSON HOMES
WHERE QUALITY LIVES



PARC FFERM WEN
ST ATHAN

-  **The Hadley**
3 bedroom home
-  **The Blyford**
3 bedroom home
-  **The Kennett**
3 bedroom home
-  **The Ingleby**
4 bedroom home
-  **The Hollinwood**
4 bedroom home
-  **The Shenton**
4 bedroom home
-  **The Meriden**
4 bedroom home
-  **The Bradgate**
4 bedroom home
-  **The Avondale**
4 bedroom home
-  **The Holden**
4 bedroom home
-  Sales Office & Show Homes
- LAP** Local Area of Play



dwh.co.uk



DAVID WILSON HOMES
WHERE QUALITY LIVES

Development layouts and landscaping are not intended to form part of any contract or warranty unless specifically incorporated in writing into the contract. Images and development layouts are for illustrative purposes and should be used for general guidance only. Development layouts including parking arrangements, [social/affordable housing, commercial buildings/space, retail buildings/space, play areas and public open spaces] may change to reflect changes in planning permission and are not intended to form part of any contract or warranty unless specifically incorporated in writing. Please speak to your solicitor to whom full details of any planning consents including layout plans will be available. Parc Fferm Wen is a marketing name only and may not be the designated postal address, which may be determined by The Post Office. SP441020

THE HADLEY

THREE BEDROOM DETACHED HOME



Individual plots may vary, please speak to the Sales Adviser



The sash-style windows give this detached home a delightfully traditional look. Yet inside, the open-plan kitchen – with its dining and family areas and separate utility room – is designed very much for busy, modern living. French doors to the garden give

the whole room a bright and airy feeling. The spacious dual-aspect lounge, meanwhile, provides the perfect place to relax. Upstairs are two double bedrooms, the large main bedroom with en suite, a single bedroom and a family bathroom.



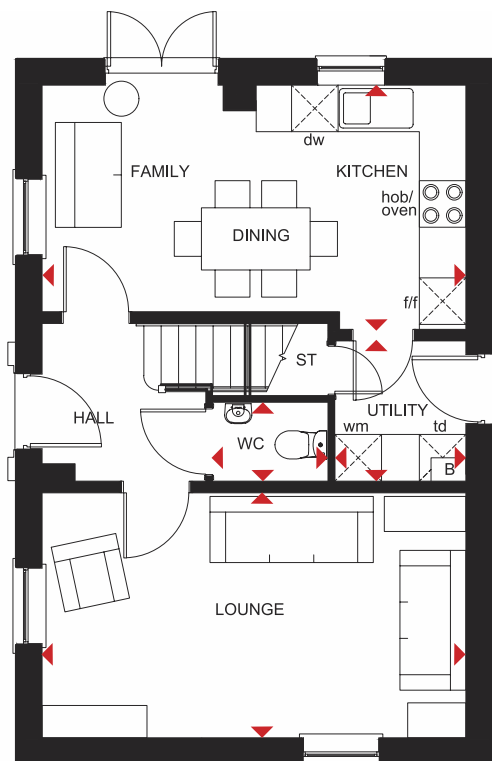
DAVID WILSON HOMES
WHERE QUALITY LIVES

THE HADLEY

THREE BEDROOM DETACHED HOME

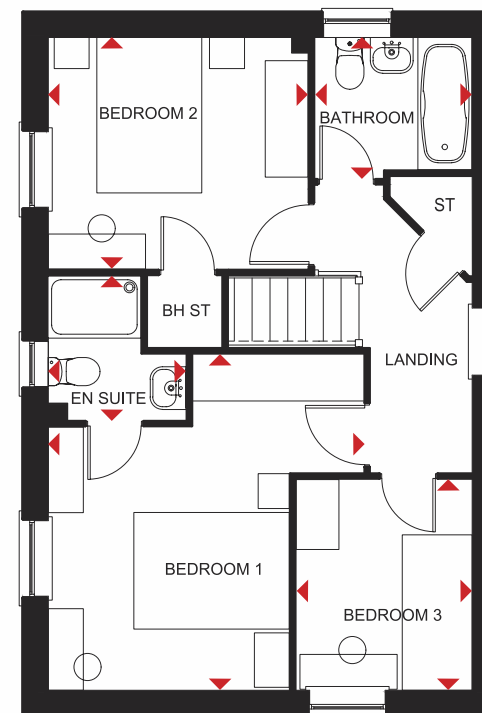
Key

| | | | | | |
|-------|----------------|-----|-----------------------|----|--------------------|
| B | Boiler | f/f | Fridge/freezer space | td | Tumble dryer space |
| ST | Store | wm | Washing machine space | ◀▶ | Dimension location |
| BH ST | Bulkhead Store | dw | Dishwasher space | | |



Ground Floor

| | | |
|-----------------------|----------------|----------------|
| Lounge | 5455 x 3153 mm | 17'11" x 10'4" |
| Kitchen/Family/Dining | 5455 x 3143 mm | 17'11" x 10'4" |
| Utility | 1804 x 1688 mm | 5'11" x 5'6" |
| WC | 1480 x 1014 mm | 4'10" x 3'4" |



First Floor

| | | |
|-----------|----------------|---------------|
| Bedroom 1 | 4324 x 4058 mm | 14'2" x 13'3" |
| En Suite | 1856 x 1771 mm | 6'1" x 5'9" |
| Bedroom 2 | 3341 x 2978 mm | 11'3" x 9'9" |
| Bedroom 3 | 2713 x 2265 mm | 8'11" x 7'5" |
| Bathroom | 2025 x 1811 mm | 6'8" x 6'0" |

All images used are for illustrative purposes. These and the dimensions given are illustrative for this house type and individual properties may differ. Please check with your Sales Adviser in respect of individual properties. We give maximum dimensions within each room which includes areas of fixtures and fittings including fitted furniture. These dimensions should not be used for carpet or flooring sizes, appliance spaces or items of furniture. All images, photographs and dimensions are not intended to be relied upon for, nor to form part of, any contract unless specifically incorporated in writing into the contract.

SP434793

THE HADLEY

THREE BEDROOM HOME



Individual plots may vary, please speak to the Sales Adviser



The sash-style windows give this detached home a delightfully traditional look. Yet inside, the open-plan kitchen – with its dining and family areas and separate utility room – is designed very much for busy, modern living. The spacious

dual-aspect lounge meanwhile provides the perfect place to relax and has French doors leading onto the garden. Upstairs are two double bedrooms, the large main bedroom with en suite, a single bedroom and a family bathroom.



DAVID WILSON HOMES
WHERE QUALITY LIVES

THE HADLEY

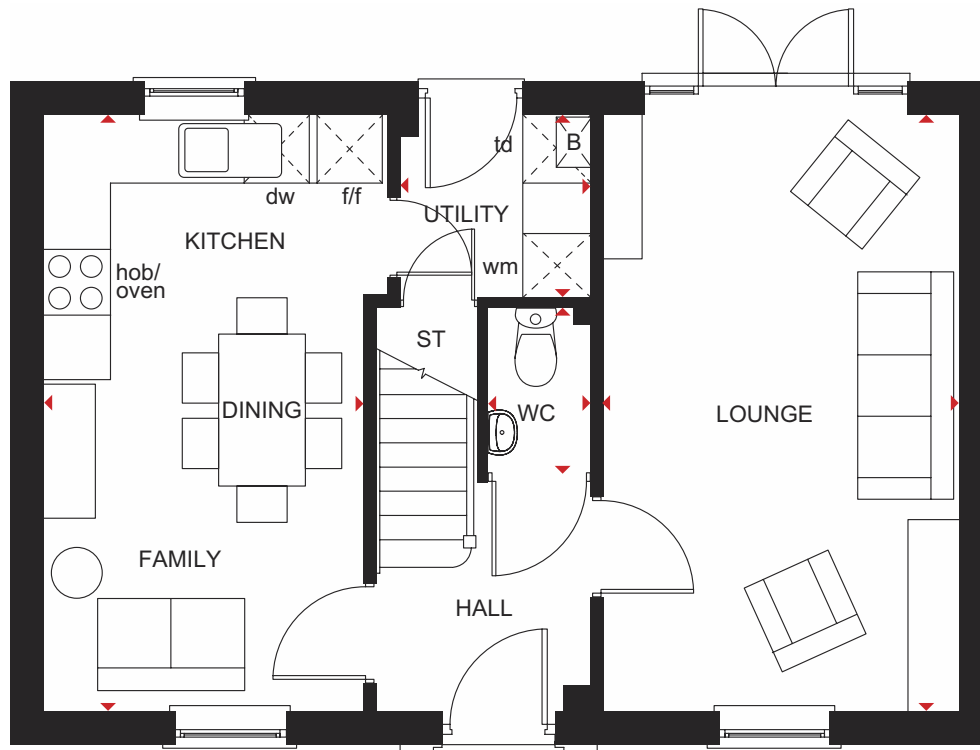
THREE BEDROOM HOME

Key

B Boiler
ST Store
f/f Fridge/freezer space

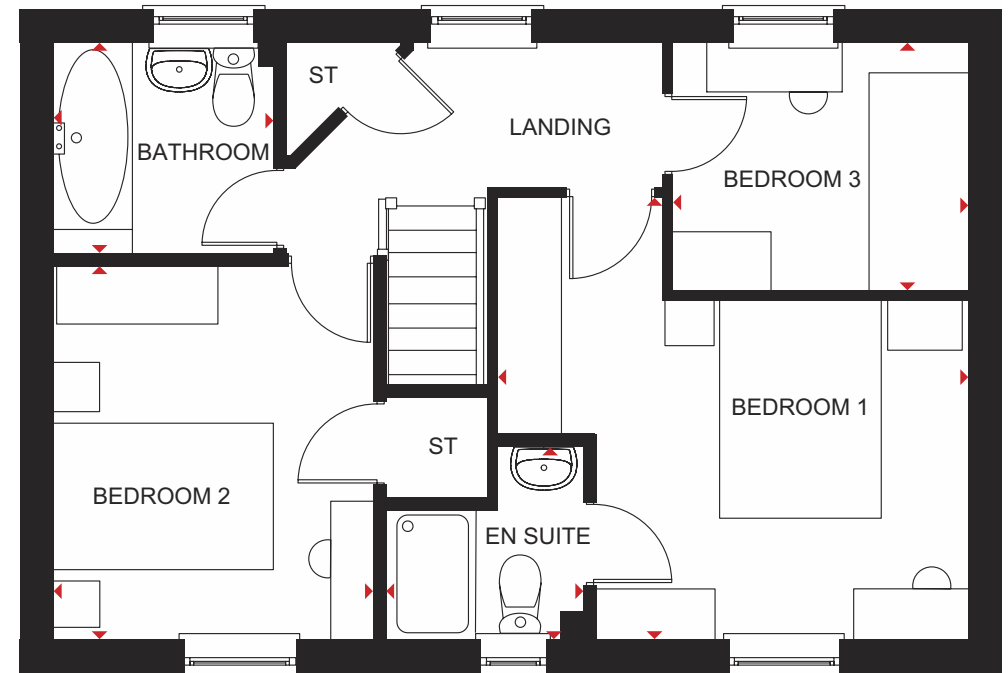
wm Washing machine space
dw Dishwasher space
td Tumble dryer space

◀▶ Dimension location



Ground Floor

| | | |
|---------------------------|----------------|----------------|
| Lounge | 5455 x 3153 mm | 17'11" x 10'4" |
| Kitchen/Family/ Dining | 5455 x 2917 mm | 17'11" x 9'7" |
| Utility | 1816 x 1687 mm | 5'11" x 5'6" |
| WC | 1485 x 1013 mm | 4'10" x 3'4" |



First Floor

| | | |
|-----------|----------------|---------------|
| Bedroom 1 | 4324 x 4058 mm | 14'2" x 13'4" |
| En suite | 1856 x 1771 mm | 6'1" x 5'9" |
| Bedroom 2 | 3441 x 2978 mm | 11'3" x 9'9" |
| Bedroom 3 | 2713 x 2265 mm | 8'11" x 7'5" |
| Bathroom | 2025 x 1925 mm | 6'8" x 6'4" |

All images used are for illustrative purposes only. Floor plans are intended to give a general indication of the proposed floor layout only. The dimensions are accurate to within + or - 50mm but should not be used for carpet or flooring sizes, appliance spaces or items of furniture. Please ask our Sales Adviser for details of the treatments specified for individual plots. Individual features such as windows, brick and other materials' colours may vary, as may drainage, heating and electrical layouts. All images, photographs and dimensions are not intended to form part of any contract or warranty unless specifically incorporated in writing into the contract.

SP434352

THE BLYFORD

THREE BEDROOM HOME



Individual plots may vary, please speak to the Sales Adviser



The impressive façade of The Blyford is a strong hint to what lies behind. A spacious lounge leads to a bright open-plan kitchen and dining area, with access to a utility room and the rear garden. An integral garage on the ground floor provides upstairs with space

generous enough for three double bedrooms, a study and a large family bathroom with separate shower. The main bedroom also enjoys the luxury of its own dressing area as well as an en suite.



DAVID WILSON HOMES
WHERE QUALITY LIVES

THE BLYFORD

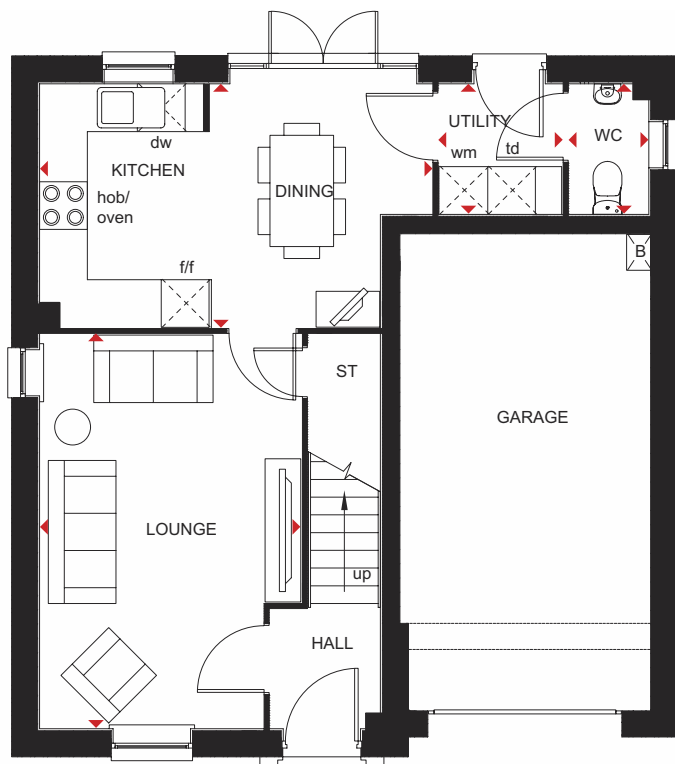
THREE BEDROOM HOME

Key

B Boiler
ST Store
BH ST Bulkhead Store

f/f Fridge/freezer space
wm Washing machine space
dw Dishwasher space

td Tumble dryer space
◀▶ Dimension location



Ground Floor

| | | |
|----------------|----------------|---------------|
| Lounge | 3292 x 4960 mm | 10'9" x 16'3" |
| Kitchen/Dining | 4933 x 3064 mm | 16'2" x 10'1" |
| WC | 1000 x 1666 mm | 3'3" x 5'6" |
| Utility | 1551 x 1666 mm | 5'1" x 5'6" |



First Floor

| | | |
|-----------|----------------|----------------|
| Bedroom 1 | 4298 x 4221 mm | 14'1" x 13'10" |
| En Suite | 2290 x 1400 mm | 7'6" x 4'7" |
| Bedroom 2 | 3275 x 3483 mm | 10'9" x 11'5" |
| Bedroom 3 | 3492 x 2995 mm | 11'5" x 9'10" |
| Bathroom | 2155 x 3188 mm | 7'1" x 10'6" |
| Study | 1837 x 2180 mm | 6'0" x 7'2" |

All images used are for illustrative purposes only. Floor plans are intended to give a general indication of the proposed floor layout only. The dimensions are accurate to within + or - 50mm but should not be used for carpet or flooring sizes, appliance spaces or items of furniture. Please ask our Sales Adviser for details of the treatments specified for individual plots. Individual features such as windows, brick and other materials' colours may vary, as may drainage, heating and electrical layouts. All images, photographs and dimensions are not intended to form part of any contract or warranty unless specifically incorporated in writing into the contract.

SP434791

THE KENNETT

THREE BEDROOM END-TERRACED HOME



Individual plots may vary, please speak to the Sales Adviser



Intelligently designed over three floors, The Kennett is a goodsized end-terraced family home, ideal for flexible modern living. The open-plan kitchen on the ground floor incorporates a dining area opening out onto the rear garden.

A lobby separating the kitchen from the spacious bay-fronted lounge leads upstairs. Here are two double bedrooms, the family bathroom and access to the second floor, which is entirely occupied by a spacious main bedroom with en suite.



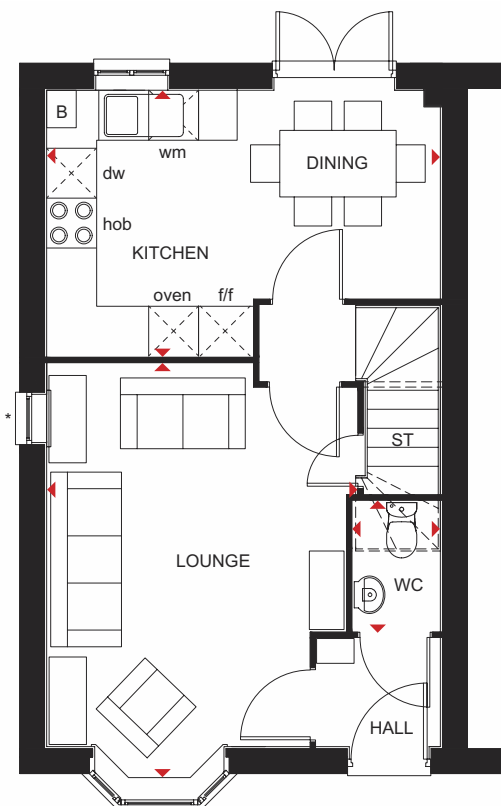
DAVID WILSON HOMES
WHERE QUALITY LIVES

THE KENNETT

THREE BEDROOM END-TERRACED HOME

Key

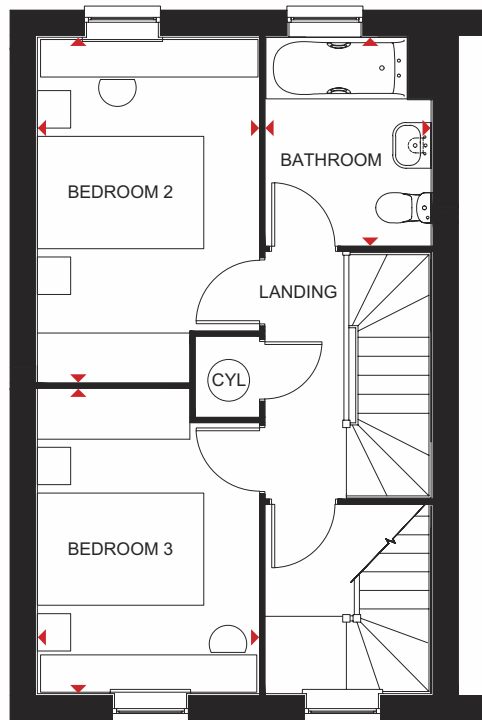
| | | | | | |
|-----|----------|-----|-----------------------|----|--------------------|
| B | Boiler | f/f | Fridge/freezer space | RL | Rooflight |
| ST | Store | wm | Washing machine space | ◀▶ | Dimension location |
| CYL | Cylinder | dw | Dishwasher space | | |



Ground Floor

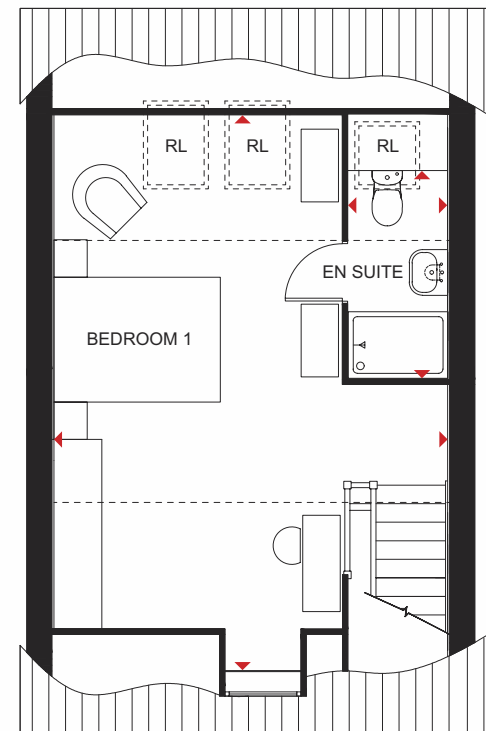
| | | |
|----------------|----------------|---------------|
| Lounge | 5001 x 3729 mm | 16'4" x 12'2" |
| Kitchen/Dining | 4733 x 3197 mm | 15'6" x 10'5" |
| WC | 1561 x 1054 mm | 5'1" x 3'5" |

*Window may be omitted on certain plots. Speak to a Sales Adviser for details on individual plots.



First Floor

| | | |
|-----------|----------------|--------------|
| Bedroom 2 | 4144 x 2659 mm | 13'7" x 8'8" |
| Bedroom 3 | 3658 x 2659 mm | 12'0" x 8'8" |
| Bathroom | 2498 x 1985 mm | 8'2" x 6'6" |



Second Floor

| | | |
|-----------|-----------------|---------------|
| Bedroom 1 | 6595* x 4733 mm | 21'8" x 15'6" |
| En suite | 1189* x 3166 mm | 3'11" x 10'5" |

*Overall floor dimension includes lowered ceiling areas

All images used are for illustrative purposes. These and the dimensions given are illustrative for this house type and individual properties may differ. Please check with your Sales Adviser in respect of individual properties. We give maximum dimensions within each room which includes areas of fixtures and fittings including fitted furniture. These dimensions should not be used for carpet or flooring sizes, appliance spaces or items of furniture. All images, photographs and dimensions are not intended to be relied upon for, nor to form part of, any contract unless specifically incorporated in writing into the contract. T310-E-7DS03/SP434357

THE INGLEBY

FOUR BEDROOM DETACHED HOME



Individual plots may vary, please speak to the Sales Adviser



This four bedroom home has an open-plan kitchen/dining room, ideal for socialising. The kitchen is filled with natural light through French doors and comes with a family area and a utility

cupboard. On the ground floor there is also a spacious lounge. Upstairs, you have an en suite main bedroom, a further double bedroom, two single bedrooms and a family bathroom.



DAVID WILSON HOMES

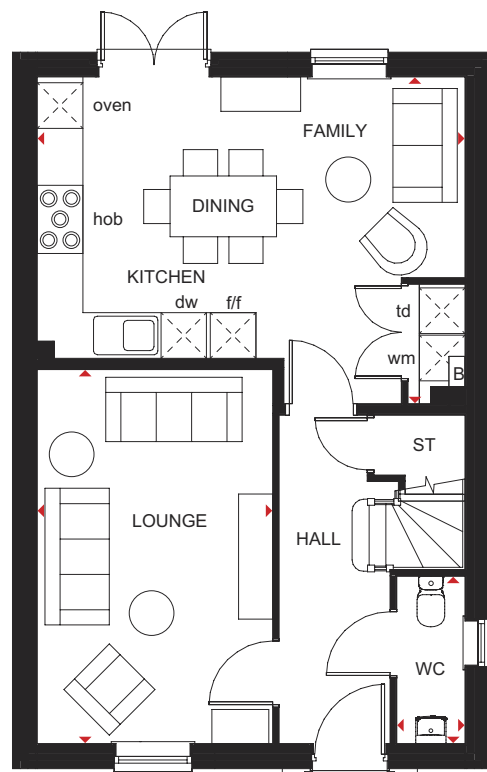
WHERE QUALITY LIVES

THE INGLEBY

FOUR BEDROOM DETACHED HOME

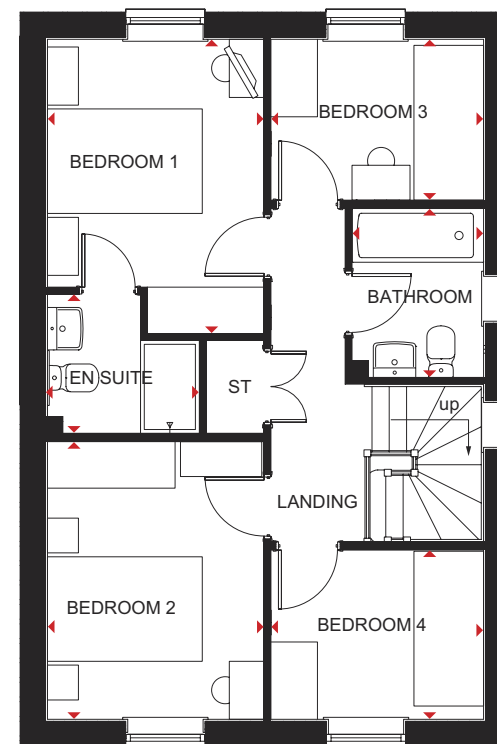
Key

| | | | | | | | | | |
|----|--------|-----|-----------------------|----|--------------------|-----|-------------------|----|--------------------|
| B | Boiler | f/f | Fridge/freezer space | dw | Dishwasher space | WFH | Working from home | ◀▶ | Dimension location |
| ST | Store | wm | Washing machine space | td | Tumble dryer space | w | Wardrobe space | | |



Ground Floor

| | | |
|-------------------------|----------------|---------------|
| Lounge | 4930 x 3100 mm | 16'2" x 10'2" |
| Kitchen/ Family/ Dining | 5365 x 4305 mm | 18'6" x 14'1" |
| WC | 2206 x 900 mm | 7'3" x 2'11" |



First Floor

| | | |
|-----------|----------------|--------------|
| Bedroom 1 | 3802 x 2800 mm | 12'6" x 9'2" |
| En Suite | 1962 x 1800 mm | 6'5" x 5'11" |
| Bedroom 2 | 3587 x 2800 mm | 11'9" x 9'2" |
| Bedroom 3 | 2747 x 2066 mm | 9'0" x 6'9" |
| Bedroom 4 | 2747 x 2172 mm | 9'0" x 7'1" |
| Bathroom | 2179 x 1700 mm | 7'2" x 5'7" |

* Window may be omitted on certain plots.
Speak to a Sales Adviser for details on individual plots.

All images used are for illustrative purposes. These and the dimensions given are illustrative for this house type and individual properties may differ. Please check with your Sales Adviser in respect of individual properties. We give maximum dimensions within each room which includes areas of fixtures and fittings including fitted furniture. These dimensions should not be used for carpet or flooring sizes, appliance spaces or items of furniture. All images, photographs and dimensions are not intended to be relied upon for, nor to form part of, any contract unless specifically incorporated in writing into the contract.

BDW000696/APR22

THE HOLLINWOOD

FOUR BEDROOM DETACHED HOME



Individual plots may vary, please speak to the Sales Adviser



Sash-style windows give The Hollinwood a delightful, traditional look, while inside it is designed very much for busy family life. An attractive glazed bay leading to the garden creates a light atmosphere in the open-plan kitchen with flexible dining and

family space. The kitchen also has an adjacent utility room. The dual-aspect lounge provides the perfect place for the whole family to relax. Upstairs are three double bedrooms, the master with en suite, a single bedroom and a family bathroom.



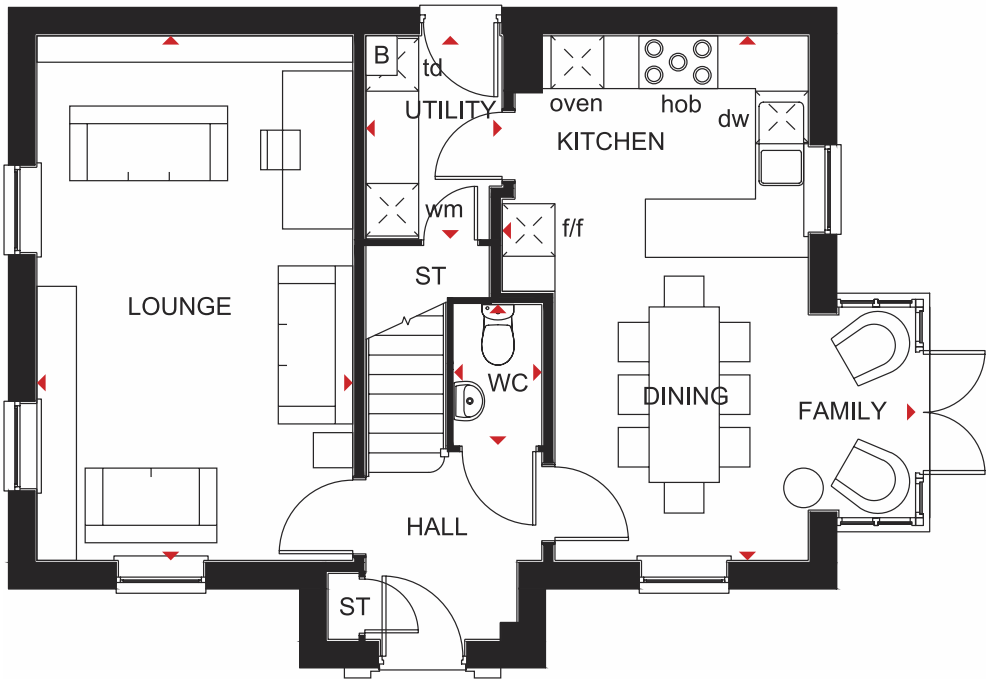
DAVID WILSON HOMES
WHERE QUALITY LIVES

THE HOLLINWOOD

FOUR BEDROOM DETACHED HOME

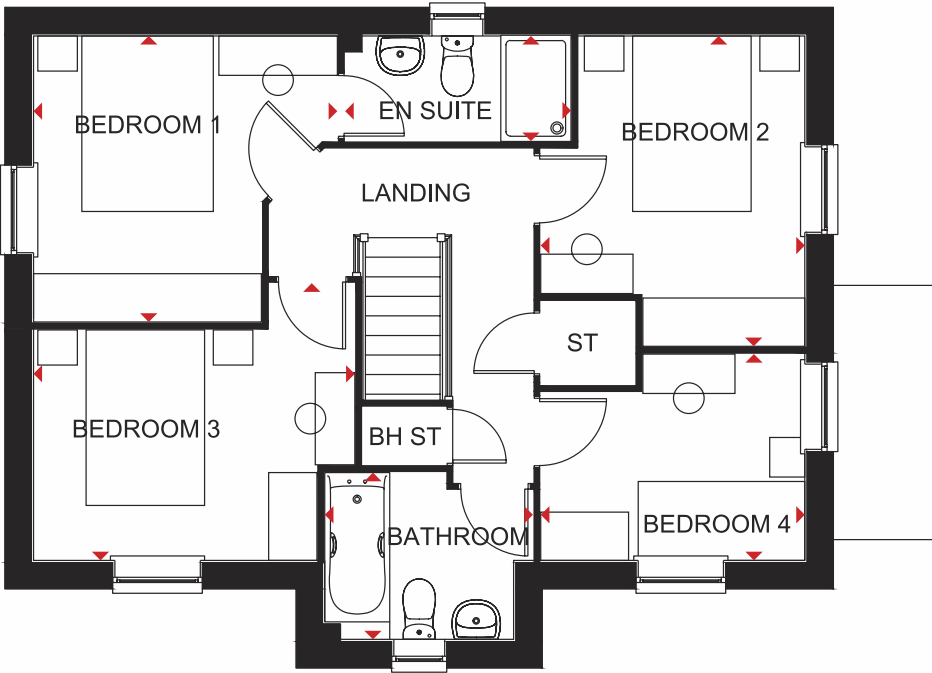
Key

| | | | | | |
|-----|----------------------|----|-----------------------|-------|--------------------|
| B | Boiler | wm | Washing machine space | BH ST | Bulkhead store |
| ST | Store | dw | Dishwasher space | ◀▶ | Dimension location |
| f/f | Fridge/freezer space | td | Tumble dryer space | | |



Ground Floor

| | | |
|-----------------------|----------------|----------------|
| Lounge | 3600 x 5978 mm | 11'10" x 19'7" |
| Kitchen/Family/Dining | 5978 x 4711 mm | 19'7" x 15'5" |
| Utility | 1550 x 2312 mm | 5'1" x 7'7" |
| WC | 1000 x 1600 mm | 3'3" x 5'3" |



First Floor

| | | |
|-----------|----------------|---------------|
| Bedroom 1 | 3462 x 3260 mm | 11'4" x 10'8" |
| En suite | 2574 x 1200 mm | 8'5" x 4'0" |
| Bedroom 2 | 3537 x 3009 mm | 11'7" x 9'10" |
| Bedroom 3 | 3661 x 3159 mm | 12'0" x 10'4" |
| Bedroom 4 | 3009 x 2352 mm | 9'10" x 7'9" |
| Bathroom | 2373 x 1900 mm | 7'9" x 6'3" |

All images used are for illustrative purposes. These and the dimensions given are illustrative for this house type and individual properties may differ. Please check with your Sales Adviser in respect of individual properties. We give maximum dimensions within each room which includes areas of fixtures and fittings including fitted furniture. These dimensions should not be used for carpet or flooring sizes, appliance spaces or items of furniture. All images, photographs and dimensions are not intended to be relied upon for, nor to form part of, any contract unless specifically incorporated in writing into the contract. DWH 2017 H486 ---7 DS03/SP415544

THE SHENTON

FOUR BEDROOM DETACHED HOME



Individual plots may vary, please speak to the Sales Adviser



The Shenton is a stylish, bay-fronted, detached home providing plenty of flexible living space. The generous open-plan kitchen with adjacent utility room incorporates dining and family areas leading to

the garden via French doors. The good-sized lounge is light and airy thanks to the walk-in bay window. Upstairs are three double bedrooms, the master with en suite, a single bedroom and the family bathroom.



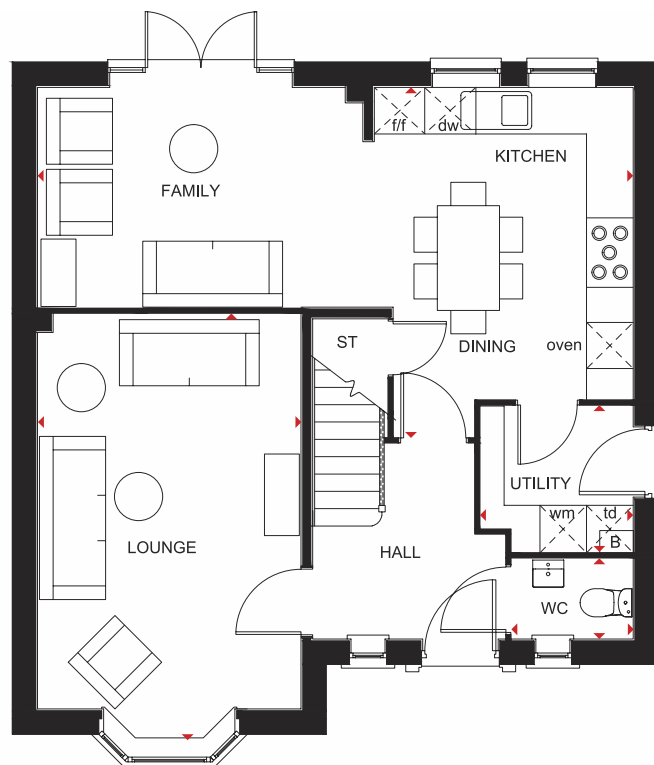
DAVID WILSON HOMES
WHERE QUALITY LIVES

THE SHENTON

FOUR BEDROOM HOME

Key

| | | | | | |
|-----|----------------------|----|-----------------------|----|--------------------|
| B | Boiler | wm | Washing machine space | ◀▶ | Dimension location |
| ST | Store | dw | Dishwasher space | BH | Bulkhead |
| f/f | Fridge/freezer space | td | Tumble dryer space | | |



Ground Floor

| | | |
|---------------------------|----------------|----------------|
| Lounge | 5478 x 3390 mm | 17'11" x 11'1" |
| Kitchen/Dining/ Family | 7665 x 4499 mm | 25'1" x 16'4" |
| Utility | 1961 x 1878 mm | 6'11" x 6'2" |
| WC | 1561 x 1033 mm | 5'1" x 3'5" |



First Floor

| | | |
|-----------|----------------|---------------|
| Bedroom 1 | 4451 x 4040 mm | 14'7" x 13'3" |
| En suite | 2461 x 1200 mm | 8'1" x 3'11" |
| Bedroom 2 | 3551 x 3536 mm | 11'8" x 11'7" |
| Bedroom 3 | 3137 x 2871 mm | 10'3" x 9'5" |
| Bedroom 4 | 3461 x 2076 mm | 11'4" x 6'10" |
| Bathroom | 2275 x 1880 mm | 7'6" x 6'2" |

*Window may be omitted on certain plots. Speak to a Sales Adviser for details on individual plots.

All images used are for illustrative purposes. These and the dimensions given are illustrative for this house type and individual properties may differ. Please check with your Sales Adviser in respect of individual properties. We give maximum dimensions within each room which includes areas of fixtures and fittings including fitted furniture. These dimensions should not be used for carpet or flooring sizes, appliance spaces or items of furniture. All images, photographs and dimensions are not intended to be relied upon for, nor to form part of, any contract unless specifically incorporated in writing into the contract. H431H7DS04/SP420053

THE MERIDEN

FOUR BEDROOM DETACHED HOME



Individual plots may vary, please speak to the Sales Adviser



The Meriden is a bright place to call home with its attractive bay-fronted lounge and a light-filled glazed bay in the kitchen/dining area with French doors leading to the garden. A family space in the kitchen increases flexibility for living and entertaining, while

a separate utility room adds practicality and an integral garage provides extra security. Upstairs are four double bedrooms, the generous main bedroom with en suite, and a family bathroom with shower.



DAVID WILSON HOMES

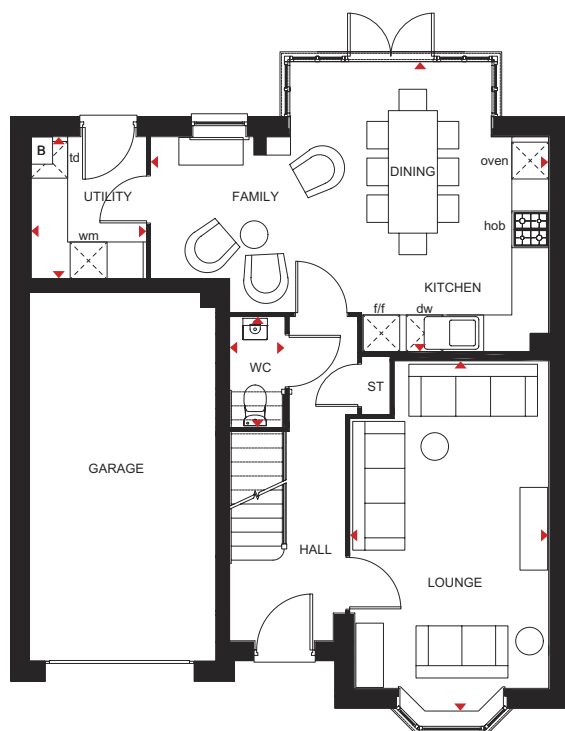
WHERE QUALITY LIVES

THE MERIDEN

FOUR BEDROOM DETACHED HOME

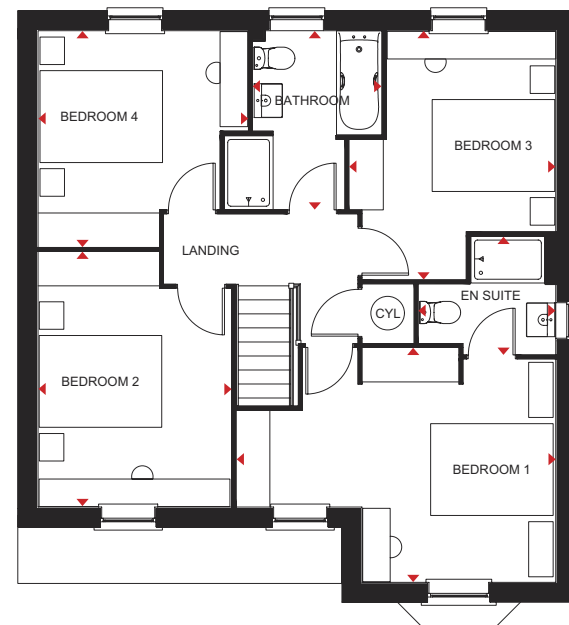
Key

| | | | | | | | |
|----|--------|-----|----------------------|----|-----------------------|----|--------------------|
| B | Boiler | CYL | Cylinder | wm | Washing machine space | td | Tumble dryer space |
| ST | Store | f/f | Fridge/freezer space | dw | Dishwasher space | ◀▶ | Dimension location |



Ground Floor

| | | |
|-----------------------|----------------|----------------|
| Lounge | 5742 x 3235 mm | 18'10" x 10'7" |
| Kitchen/Family/Dining | 6486 x 4735 mm | 21'3" x 15'6" |
| Utility | 2305 x 1877 mm | 7'7" x 6'2" |
| WC | 1786 x 882 mm | 5'10" x 2'11" |



First Floor

| | | |
|-----------|----------------|---------------|
| Bedroom 1 | 5208 x 3822 mm | 17'1" x 12'6" |
| En Suite | 2235 x 1923 mm | 7'4" x 6'4" |
| Bedroom 2 | 4161 x 3155 mm | 13'8" x 10'4" |
| Bedroom 3 | 4056 x 3365 mm | 13'3" x 11'0" |
| Bedroom 4 | 3527 x 3423 mm | 11'7" x 11'3" |
| Bathroom | 2913 x 2100 mm | 9'6" x 6'11" |

All images used are for illustrative purposes. These and the dimensions given are illustrative for this house type and individual properties may differ. Please check with your Sales Adviser in respect of individual properties. We give maximum dimensions within each room which includes areas of fixtures and fittings including fitted furniture. These dimensions should not be used for carpet or flooring sizes, appliance spaces or items of furniture. All images, photographs and dimensions are not intended to be relied upon for, nor to form part of, any contract unless specifically incorporated in writing into the contract.

SP434393

THE BRADGATE

FOUR BEDROOM DETACHED HOME



Individual plots may vary, please speak to the Sales Adviser

A home to suit all the family, the Bradgate offers a combination of flexible communal areas and dedicated quiet space. An expansive open-plan kitchen with separate utility has dining and family areas leading to the garden – and extended living space in good weather – via a beautiful walk-in glazed bay with French

doors. A separate study and a lounge with attractive bay window provide room to work and relax in. Four double bedrooms upstairs, the spacious main bedroom with en suite, ensure everyone has space of their own. A family bathroom completes this truly superb family home.



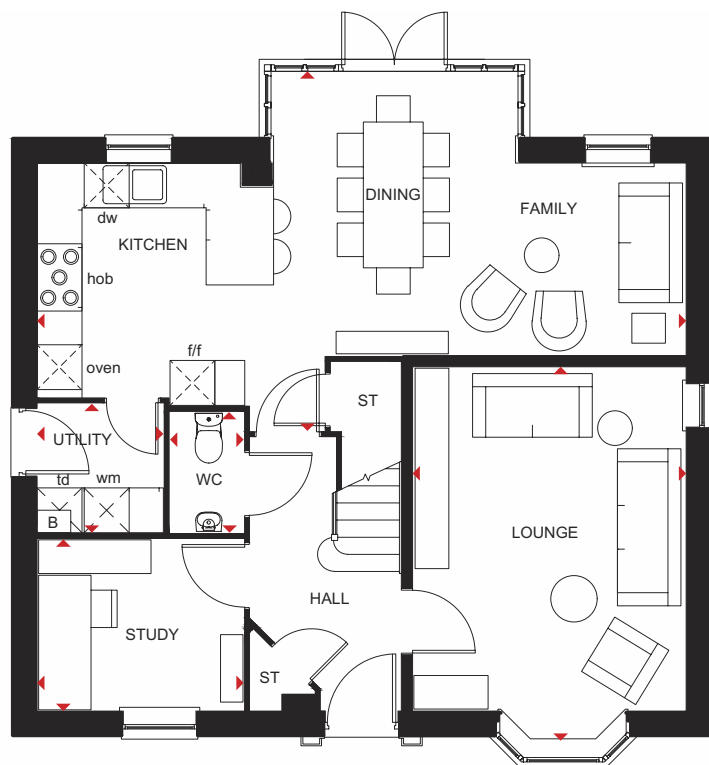
DAVID WILSON HOMES
WHERE QUALITY LIVES

THE BRADGATE

FOUR BEDROOM DETACHED HOME

Key

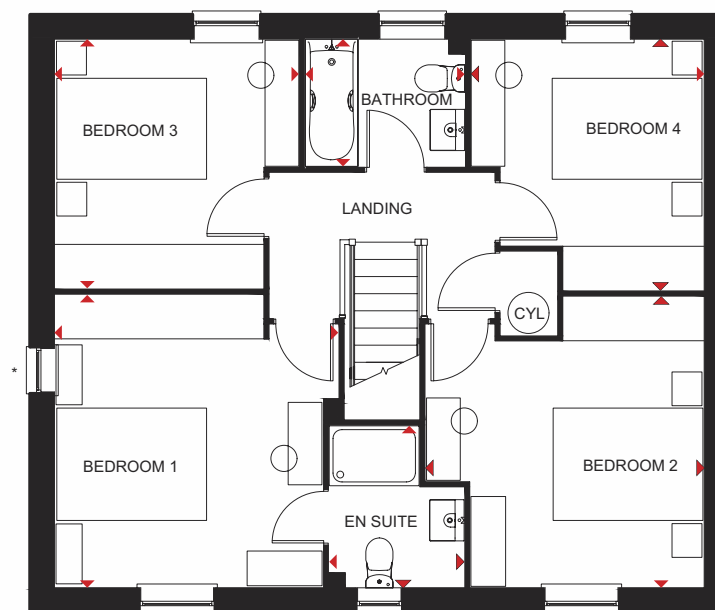
| | | | | | |
|-----|----------|-----|-----------------------|----|--------------------|
| B | Boiler | f/f | Fridge/freezer space | td | Tumble dryer space |
| ST | Store | wm | Washing machine space | ◀▶ | Dimension location |
| CYL | Cylinder | dw | Dishwasher space | | |



Ground Floor

| | | |
|-----------------------|----------------|----------------|
| Lounge | 4999 x 3658 mm | 16'4" x 12'0" |
| Kitchen/Dining/Family | 8677 x 4835 mm | 28'5" x 15'10" |
| Study | 2762 x 2295 mm | 9'1" x 7'6" |
| Utility | 1687 x 1724 mm | 5'6" x 5'7" |
| WC | 1614 x 986 mm | 5'4" x 3'2" |

*Window may be omitted on certain plots. Speak to a Sales Adviser for details on individual plots.



First Floor

| | | |
|-----------|----------------|----------------|
| Bedroom 1 | 3910 x 3791 mm | 12'9" x 12'5" |
| En suite | 2162 x 1799 mm | 7'1" x 5'10" |
| Bedroom 2 | 3720 x 3885 mm | 12'2" x 12'9" |
| Bedroom 3 | 3329 x 3263 mm | 10'11" x 10'8" |
| Bedroom 4 | 3353 x 3112 mm | 11'0" x 10'2" |
| Bathroom | 2124 x 1700 mm | 6'11" x 5'7" |

*Window may be omitted on certain plots. Speak to a Sales Adviser for details on individual plots.

All images used are for illustrative purposes. These and the dimensions given are illustrative for this house type and individual properties may differ. Please check with your Sales Adviser in respect of individual properties. We give maximum dimensions within each room which includes areas of fixtures and fittings including fitted furniture. These dimensions should not be used for carpet or flooring sizes, appliance spaces or items of furniture. All images, photographs and dimensions are not intended to be relied upon for, nor to form part of, any contract unless specifically incorporated in writing into the contract. H417 --H7 DS03/SP434355

THE AVONDALE

FOUR BEDROOM DETACHED HOME



Individual plots may vary, please speak to the Sales Adviser



This tasteful, double-fronted, detached home, with elegant sash-style windows, provides plenty of flexible living space. The Avondale's generous open-plan kitchen has a dedicated dining area with an attractive bay window, and a separate utility room.

A large, triple-aspect lounge leads to the garden via French doors and a separate study provides quiet space to work. Upstairs are four double bedrooms, the main with en suite, and a family bathroom with bath and shower.



DAVID WILSON HOMES

WHERE QUALITY LIVES

THE AVONDALE

FOUR BEDROOM HOME

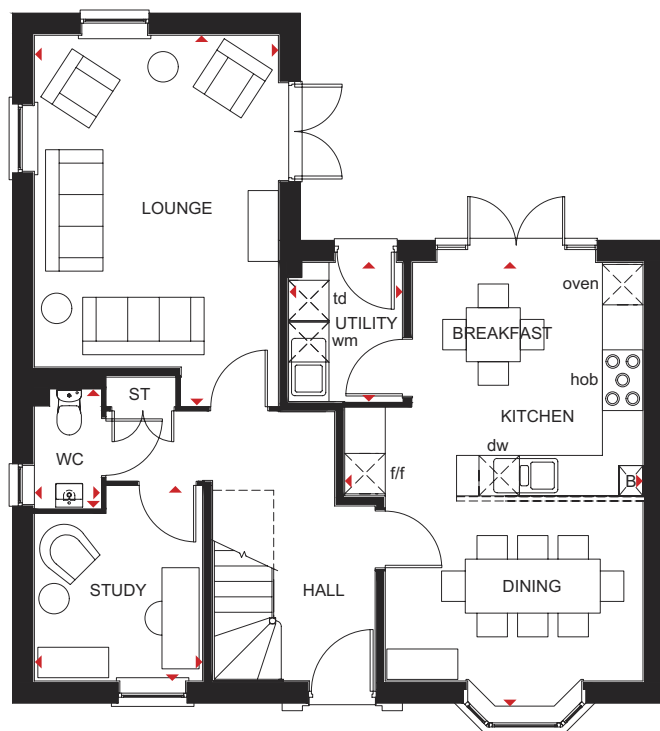
Key

ST Store
CYL Cylinder

f/f Fridge/freezer space
wm Washing machine space

dw Dishwasher space
td Tumble dryer space

◄► Dimension location



Ground Floor

| | | |
|------------------------------|----------------|----------------|
| Lounge | 5490 x 3615 mm | 18'0" x 11'10" |
| Kitchen/ Breakfast/Dining | 6600 x 4418 mm | 21'7" x 14'6" |
| Utility | 2062 x 1688 mm | 6'9" x 5'6" |
| Study | 2885 x 2490 mm | 9'5" x 8'2" |
| WC | 1768 x 983 mm | 5'10" x 3'3" |



First Floor

| | | |
|-----------|----------------|----------------|
| Bedroom 1 | 5587 x 3615 mm | 18'4" x 11'10" |
| En suite | 2222 x 1435 mm | 7'3" x 4'8" |
| Bedroom 2 | 5227 x 2800 mm | 17'1" x 9'2" |
| Bedroom 3 | 3566 x 3316 mm | 11'8" x 10'10" |
| Bedroom 4 | 3893 x 2550 mm | 12'9" x 8'4" |
| Bathroom | 2871 x 1929 mm | 9'5" x 6'4" |

All images used are for illustrative purposes. These and the dimensions given are illustrative for this house type and individual properties may differ. Please check with your Sales Adviser in respect of individual properties. We give maximum dimensions within each room which includes areas of fixtures and fittings including fitted furniture. These dimensions should not be used for carpet or flooring sizes, appliance spaces or items of furniture. All images, photographs and dimensions are not intended to be relied upon for, nor to form part of, any contract unless specifically incorporated in writing into the contract.

DWH 2017 H456 --X7 DS07/SP422090

THE HOLDEN

FOUR BEDROOM DETACHED HOME



Individual plots may vary, please speak to the Sales Adviser



Sash-style windows give The Holden a charming, traditional look, yet inside it is designed very much for modern family living. A beautiful glazed bay leading to the garden makes the open-plan kitchen, family and dining areas exceptionally bright and

airy. A separate utility room also has access to the garden, while a large bay-fronted lounge and a separate study provide room to relax and work. Upstairs are four double bedrooms, the master with en suite, and a family bathroom with shower.



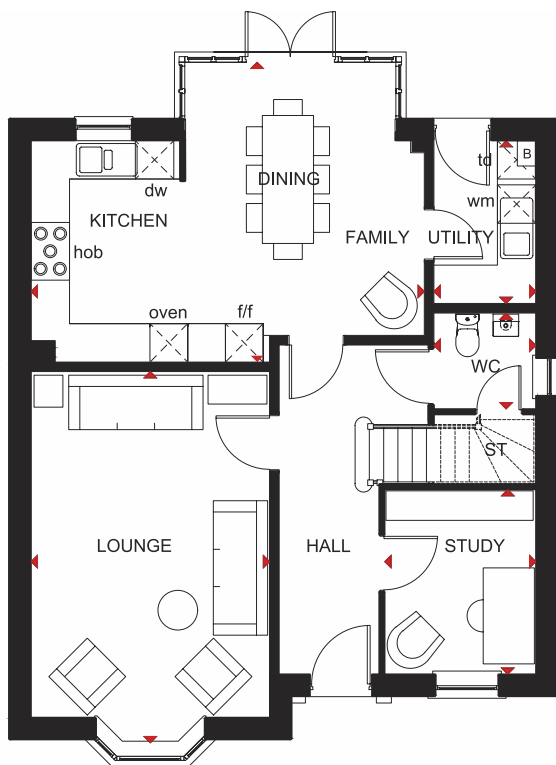
DAVID WILSON HOMES
WHERE QUALITY LIVES

THE HOLDEN

FOUR BEDROOM DETACHED HOME

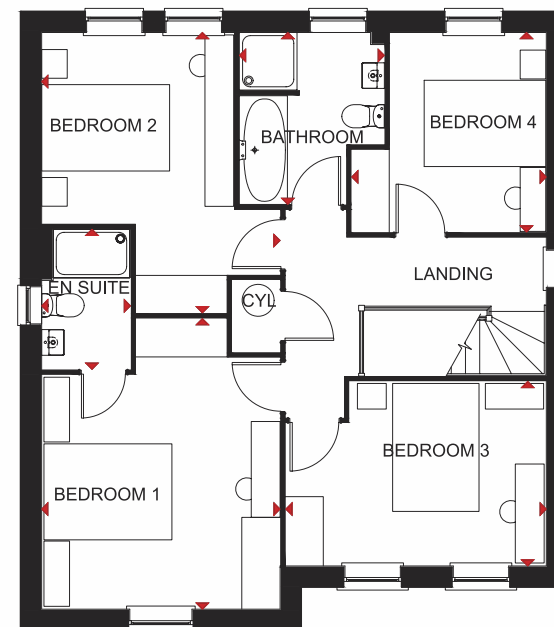
Key

| | | | | | |
|-----|----------|-----|-----------------------|----|--------------------|
| B | Boiler | f/f | Fridge/freezer space | td | Tumble dryer space |
| ST | Store | wm | Washing machine space | ◀▶ | Dimension location |
| CYL | Cylinder | dw | Dishwasher space | | |



Ground Floor

| | | |
|-----------------------|----------------|---------------|
| Lounge | 5802 x 3728 mm | 19'0" x 12'3" |
| Kitchen/Family/Dining | 6147 x 4685 mm | 20'2" x 15'4" |
| Study | 2886 x 2361 mm | 9'6" x 7'9" |
| Utility | 2545 x 1593 mm | 8'4" x 5'3" |
| WC | 1498 x 1593 mm | 4'11" x 5'3" |



First Floor

| | | |
|-----------|----------------|----------------|
| Bedroom 1 | 4543 x 3728 mm | 14'11" x 12'3" |
| En suite | 2190 x 1390 mm | 7'2" x 4'7" |
| Bedroom 2 | 4384 x 3728 mm | 14'4" x 12'3" |
| Bedroom 3 | 4073 x 2886 mm | 13'4" x 9'5" |
| Bedroom 4 | 3120 x 3043 mm | 10'3" x 10'0" |
| Bathroom | 2689 x 2266 mm | 8'10" x 7'5" |

All images used are for illustrative purposes. These and the dimensions given are illustrative for this house type and individual properties may differ. Please check with your Sales Adviser in respect of individual properties. We give maximum dimensions within each room which includes areas of fixtures and fittings including fitted furniture. These dimensions should not be used for carpet or flooring sizes, appliance spaces or items of furniture. All images, photographs and dimensions are not intended to be relied upon for, nor to form part of, any contract unless specifically incorporated in writing into the contract. H469 --H7 DS03/SP416921

DAVID WILSON HOMES

WHERE QUALITY LIVES

dwh.co.uk