



# Willow Grove



# Willow Grove



- **Maidstone** 3 bedroom home
- **Ellerton** 3 bedroom home
- **Moresby** 3 bedroom home
- **Bewdley** 3 bedroom home
- **Kingsville** 3 bedroom home
- **Norbury** 3 bedroom home
- **Brentford** 3 bedroom home
- **Woodcote** 4 bedroom home
- **Kingsley** 4 bedroom home
- **Hale** 4 bedroom home
- **Radleigh** 4 bedroom home
- **Alderney** 4 bedroom home
- **Affordable Housing**



- BCP **Bin Collection Point**
- V **Visitor Parking Space**




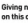




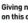


Development layouts and landscaping are not intended to form part of any contract or warranty unless specifically incorporated in writing into the contract. Images and development layouts are for illustrative purposes and should be used for general guidance only. Development layouts including parking arrangements and social/affordable housing may change to reflect changes in planning permission and are not intended to form part of any contract or warranty unless specifically incorporated in writing. Please speak to your solicitor to whom full details of any planning consents including layout plans will be available. AWoburn Downs is a marketing name only and may not be the designated postal address, which may be determined by The Post Office.



# Willow Grove






- **Maldon** 2 bedroom apartment
- **Ambersham** 2 bedroom apartment
- **Alverton** 2 bedroom home
- **Denford** 2 bedroom home
- **Maidstone** 3 bedroom home
- **Ellerton** 3 bedroom home
- **Bewdley** 3 bedroom home
- **Kingsville** 3 bedroom home
- **Norbury** 3 bedroom home
- **Brentford** 3 bedroom home
- **Denby** 3 bedroom home
- **Haversham** 3 bedroom home
- **Woodcote** 4 bedroom home
- **Kingsley** 4 bedroom home
- **Hale** 4 bedroom home
- **Radleigh** 4 bedroom home
- **Alderney** 4 bedroom home
- **Hesketh** 4 bedroom home
- **Bespoke** 5 bedroom home
- **Affordable Housing**

- BCP**  **Bin Collection Point**
- V**  **Visitor Parking Space**
- BS**  **Bin Store**
- CS**  **Cycle Store**
- S/S**  **Substation**
-  **New Tree Line**
-  **Play Area**
-  **Electric Vehicle Charging**  
Electric vehicle charging points are subject to availability and may be subject to change without notice.
-  **Giving nature a home on this development.**
-  **Bat Box**
-  **Bird Box**



# Willow Grove

-  David Wilson Homes
-  Barratt Homes
-  Education
-  Town Centre







# OUR HOMES ARE BUILT BY AN **AWARD WINNER**

## NHBC PRIDE IN THE JOB ACCOLADE FOR SAM HARDING

- Independently judged, they are the best accolade a Site Manager can win
- Our\* Site Managers have won more Pride in the Job Awards than any other housebuilder for 21 years in a row
- We deliver award-winning quality year after year, so you can buy with confidence

**NHBC**

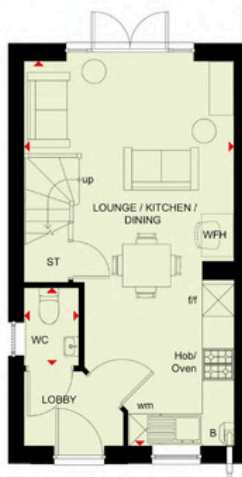
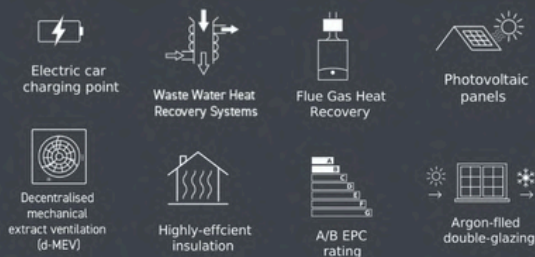
**Pride in  
the Job  
Awards 2025**



**BARRATT  
HOMES**

# DENFORD

## 2 BEDROOM HOME



### First Floor

Kitchen/ Dining/Lounge	3943 x 7210mm	12'11" x 23'8"
WC	1040 x 1490mm	3'5" x 4'11"



### First Floor

Bedroom 1	3943 x 2412mm	12'11" x 7'11"
Bedroom 2	3943 x 2702mm	12'11" x 8'10"
Bathroom	1840 x 1920mm	6'0" x 6'4"

(Approximate dimensions)

<b>KEY</b>	B	Boiler	td	Tumble dryer space	WFH	Working from home space
	ST	Store	d/w	Dishwasher space	W	Wardrobe space
	wm	Washing machine space	f/f	Fridge/freezer space	◀▶	Dimension location



We are on the New Homes Quality Code register of registered developers. "We" refers to the Barratt Developments PLC group brands including Barratt London, Barratt Homes and David Wilson Homes. All images used are for illustrative purposes. The images and the dimensions given are illustrative for this house type and individual properties may differ. Please check with your Sales Adviser in respect of individual properties. We give maximum dimensions within each room which includes areas of fixtures and fittings including fitted furniture. These dimensions should not be used for carpet or flooring sizes, appliance spaces or items of furniture. All images, photographs, dimensions and energy efficiency features depicted are not intended to be relied upon for, nor to form part of, any contract unless specifically incorporated in writing into the contract.

# MAIDSTONE

## 3 BEDROOM HOME



Electric car  
charging point



Waste Water Heat  
Recovery Systems



Flue Gas Heat  
Recovery



Photovoltaic  
panels



Decentralised  
mechanical  
extract ventilation  
(d-MEV)



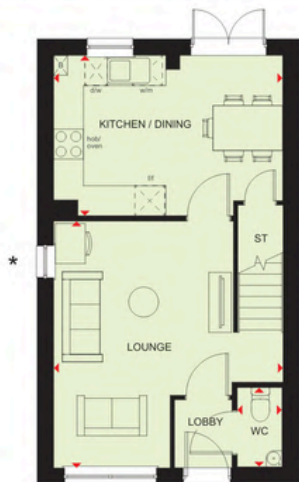
Highly-efficient  
insulation



A/B EPC  
rating



Argon-filled  
double-glazing



### Ground Floor

Lounge	4598 x 4930 mm	15'1" x 16'2"
Kitchen/Dining	4593 x 3202 mm	15'1" x 10'6"
WC	901 x 1586 mm	2'11" x 5'2"



### First Floor

Bedroom 1	2592 x 4199 mm	8'6" x 13'9"
Bedroom 2	2592 x 3107 mm	8'6" x 10'2"
Bedroom 3	1918 x 2676 mm	6'3" x 8'9"
Bathroom	1918 x 1702 mm	6'3" x 5'7"
En Suite	2592 x 1365 mm	8'6" x 4'6"

(Approximate dimensions) \* Window may be omitted on certain plots. Speak to Sales Adviser for details on specific plots

<b>KEY</b>	B	Boiler Store	Washing machine space	dw	Dishwasher space	BH/ST	Bulkhead Store
	ST			l/f	Fridge/freezer space	W	Wardrobe space
	wm			WFH	Working From Home space	♦♦	Dimension location



We are on the New Homes Quality Code register of registered developers. "We" refers to the Barratt Developments PLC group brands including Barratt London, Barratt Homes and David Wilson Homes. All images used are for illustrative purposes. The images and the dimensions given are illustrative for this house type and individual properties may differ. Please check with your Sales Adviser in respect of individual properties. We give maximum dimensions within each room which includes areas of fixtures and fittings including fitted furniture. These dimensions should not be used for carpet or flooring sizes, appliance spaces or items of furniture. All images, photographs, dimensions and energy efficiency features depicted are not intended to be relied upon for, nor to form part of, any contract unless specifically incorporated in writing into the contract.

B0W004795JUNE24

# ELLERTON

## 3 BEDROOM HOME



Electric car  
charging point



Waste Water Heat  
Recovery Systems



Flue Gas Heat  
Recovery



Photovoltaic  
panels



Decentralised  
mechanical  
extract ventilation  
(d-MEV)



Highly-efficient  
insulation



A/B EPC  
rating



Argon-filled  
double-glazing



### Ground Floor

Lounge	4274 x 3995 mm	14'0" x 13'1"
Kitchen / Dining	5272 x 3463 mm	17'4" x 11'4"
WC	1647 x 1098 mm	5'5" x 3'7"



### First Floor

Bedroom 1	3263 x 3595 mm	10'8" x 11'10"
En Suite	2498 x 1200 mm	8'2" x 3'11"
Bedroom 2	3066 x 3773 mm	10'1" x 12'5"
Bedroom 3	2632 x 3520 mm	8'8" x 11'7"
Bathroom	1931 x 1923 mm	6'4" x 6'4"

**KEY** B Boiler Store Washing  
ST machine space  
wm

dw Dishwasher space  
t/f Fridge/freezer space  
WFH Working From Home space

BH/ST Bulkhead Store  
W Wardrobe space  
↔ Dimension location



We are on the New Homes Quality Code register of registered developers. "We" refers to the Barratt Developments PLC group brands including Barratt London, Barratt Homes and David Wilson Homes. All images used are for illustrative purposes. The images and the dimensions given are illustrative for this house type and individual properties may differ. Please check with your Sales Adviser in respect of individual properties. We give maximum dimensions within each room which includes areas of fixtures and fittings including fitted furniture. These dimensions should not be used for carpet or flooring sizes, appliance spaces or items of furniture. All images, photographs, dimensions and energy efficiency features depicted are not intended to be relied upon for, nor to form part of, any contract unless specifically incorporated in writing into the contract.

B0W050795/JUNE24



# ENNERDALE

## 3 BEDROOM HOME



Electric car  
charging point



Waste Water Heat  
Recovery Systems



Flue Gas Heat  
Recovery



Photovoltaic  
panels



Decentralised  
mechanical  
extract ventilation  
(d-MEV)



Highly-efficient  
insulation



A/B EPC  
rating



Argon-filled  
double-glazing



### Ground Floor

Lounge	4955 x 3107 mm	16'3" x 10'2"
Kitchen/Dining	4955 x 3170 mm	16'3" x 10'5"
WC	980 x 1895 mm	3'3" x 6'3"

(Approximate dimensions)



### First Floor

Bedroom 1	3893 x 4239 mm	12'9" x 13'11"
En Suite	2056 x 1427 mm	6'9" x 4'8"
Bedroom 2	3140 x 3783 mm	10'4" x 12'5"
Bedroom 3	2227 x 2089 mm	7'4" x 6'10"
Bathroom	1924 x 2329 mm	6'4" x 7'8"

(Approximate dimensions) \* Window may be omitted on certain plots. Speak to Sales Adviser for details on specific plots

<b>KEY</b>	B	Boiler Store Washing	dw	Dishwasher space	BH/ST	Bulkhead Store
	ST	machine space	I/I	Fridge/freezer space	W	Wardrobe space
	wm		WFH	Working From Home space	♦♦	Dimension location



We are on the New Homes Quality Code register of registered developers. "We" refers to the Barratt Developments PLC group brands including Barratt London, Barratt Homes and David Wilson Homes. All images used are for illustrative purposes. The images and the dimensions given are illustrative for this house type and individual properties may differ. Please check with your Sales Adviser in respect of individual properties. We give maximum dimensions within each room which includes areas of fixtures and fittings including fitted furniture. These dimensions should not be used for carpet or flooring sizes, appliance spaces or items of furniture. All images, photographs, dimensions and energy efficiency features depicted are not intended to be relied upon for, nor to form part of, any contract unless specifically incorporated in writing into the contract.

B0W004795/JUNE24

# MORESBY

## 3 BEDROOM HOME



Electric car  
charging point



Waste Water Heat  
Recovery Systems



Flue Gas Heat  
Recovery



Photovoltaic  
panels



Decentralised  
mechanical  
extract ventilation  
(d-MEV)



Highly-efficient  
insulation



A/B EPC  
rating



Argon-filled  
double-glazing



### Ground Floor

Lounge	4274 x 3995 mm	14'0" x 13'1"
Kitchen / Dining	5272 x 3463 mm	17'4" x 11'4"
WC	1647 x 1098 mm	5'5" x 3'7"



### First Floor

Bedroom 1	3263 x 3595 mm	10'8" x 11'10"
En Suite	2498 x 1200 mm	8'2" x 3'11"
Bedroom 2	3066 x 3773 mm	10'1" x 12'5"
Bedroom 3	2632 x 3520 mm	8'8" x 11'7"
Bathroom	1931 x 1923 mm	6'4" x 6'4"

<b>KEY</b>	B	Boiler Store	dw	Dishwasher space	BH/ST	Bulkhead Store
	ST	machine space	f/f	Fridge/freezer space	W	Wardrobe space
	wm		WFH	Working From Home space	••	Dimension location



We are on the New Homes Quality Code register of registered developers. "We" refers to the Barratt Developments PLC group brands including Barratt London, Barratt Homes and David Wilson Homes. All images used are for illustrative purposes. The images and the dimensions given are illustrative for this house type and individual properties may differ. Please check with your Sales Adviser in respect of individual properties. We give maximum dimensions within each room which includes areas of fixtures and fittings including fitted furniture. These dimensions should not be used for carpet or flooring sizes, appliance spaces or items of furniture. All images, photographs, dimensions and energy efficiency features depicted are not intended to be relied upon for, nor to form part of, any contract unless specifically incorporated in writing into the contract.

B0W004795/JUNE24

# KINGSLEY

## 4 BEDROOM HOME

  
Electric car  
charging point

  
Waste Water Heat  
Recovery Systems


  
Flue Gas Heat  
Recovery

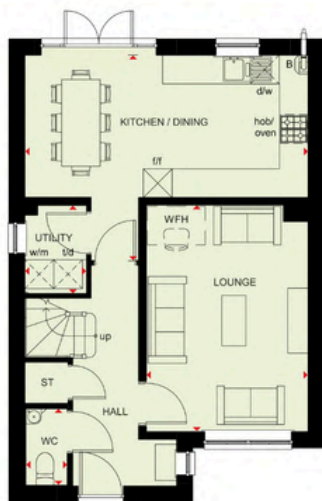
  
Photovoltaic  
panels

  
Decentralised  
mechanical  
extract ventilation  
(d-MEV)

  
Highly-efficient  
insulation

  
A/B EPC  
rating

  
Argon-filled  
double-glazing



### Ground Floor

Lounge	3370 x 4710 mm	11'1" x 15'5"
Kitchen/Dining	5895 x 4268 mm	19'4" x 14'0"
WC	904 x 1627 mm	3'0" x 5'4"
Utility	1287 x 1841 mm	4'3" x 6'0"



### First Floor

Bedroom 1	3054 x 3328 mm	10'0" x 10'11"
En Suite	2181 x 1816 mm	7'2" x 5'11"
Bedroom 2	3054 x 3123 mm	10'0" x 10'3"
Bedroom 3	2935 x 2747 mm	9'8" x 9'0"
Bedroom 4	2754 x 2605 mm	9'0" x 8'9"
Bathroom	1700 x 1937 mm	5'7" x 6'4"

[Approximate dimensions]

**KEY** B Boiler Store Washing  
ST machine space  
wm

dw Dishwasher space  
t/f Fridge/freezer space  
WFH Working From Home space

BH/ST Bulkhead Store  
W Wardrobe space  
•• Dimension location



We are on the New Homes Quality Code register of registered developers. "We" refers to the Barratt Developments PLC group brands including Barratt London, Barratt Homes and David Wilson Homes. All images used are for illustrative purposes. The images and the dimensions given are illustrative for this house type and individual properties may differ. Please check with your Sales Adviser in respect of individual properties. We give maximum dimensions within each room which includes areas of fixtures and fittings including fitted furniture. These dimensions should not be used for carpet or flooring sizes, appliance spaces or items of furniture. All images, photographs, dimensions and energy efficiency features depicted are not intended to be relied upon for, nor to form part of, any contract unless specifically incorporated in writing into the contract.

B0W004795/JUNE24



# LUTTERWORTH

## 3 BEDROOM HOME



Electric car  
charging point



Waste Water Heat  
Recovery Systems



Flue Gas Heat  
Recovery



Photovoltaic  
panels



Decentralised  
mechanical  
extract ventilation  
(d-MEV)



Highly-efficient  
insulation



A/B EPC  
rating



Argon-filled  
double-glazing



### Ground Floor

Lounge	3040 x 5380 mm	10'0" x 17'8"
Kitchen/Dining	4278 x 5385 mm	14'0" x 17'8"
WC	994 x 1504 mm	3'3" x 4'11"

(Approximate dimensions)



### First Floor

Bedroom 1	3107 x 3594 mm	10'2" x 11'9"
En Suite	1648 x 2159 mm	5'5" x 7'1"
Bedroom 2	3406 x 3158 mm	11'2" x 10'4"
Bedroom 3	3542 x 2129 mm	11'7" x 7'0"
Bathroom	2519 x 1954 mm	8'3" x 6'5"

(Approximate dimensions)

<b>KEY</b>	B	Boiler	td	Tumble dryer space	WFH	Working from home space
	ST	Store	dw	Dishwasher space	W	Wardrobe space
	wm	Washing machine space	t/f	Fridge/freezer space	◀▶	Dimension location



We are on the New Homes Quality Code register of registered developers. "We" refers to the Barratt Developments PLC group brands including Barratt London, Barratt Homes and David Wilson Homes. All images used are for illustrative purposes. The images and the dimensions given are illustrative for this house type and individual properties may differ. Please check with your Sales Adviser in respect of individual properties. We give maximum dimensions within each room which includes areas of fixtures and fittings including fitted furniture. These dimensions should not be used for carpet or flooring sizes, appliance spaces or items of furniture. All images, photographs, dimensions and energy efficiency features depicted are not intended to be relied upon for, nor to form part of, any contract unless specifically incorporated in writing into the contract.

# BEWDLEY

## 3 BEDROOM HOME



Electric car  
charging point



Waste Water Heat  
Recovery Systems



Flue Gas Heat  
Recovery



Photovoltaic  
panels



Decentralised  
mechanical  
extract ventilation  
(d-MEV)



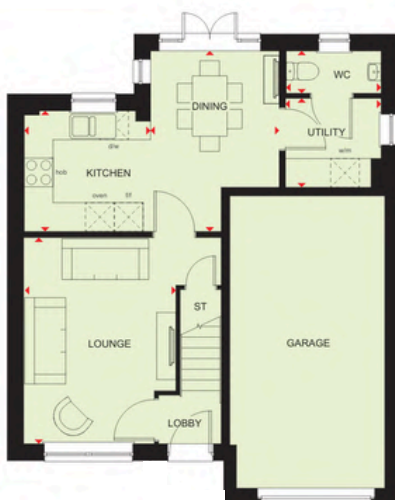
Highly-efficient  
insulation



A/B EPC  
rating



Argon-filled  
double-glazing



### Ground Floor

Lounge	3146 x 4297 mm	10'4" x 14'1"
Kitchen	2628 x 2514 mm	8'7" x 8'3"
Dining	2682 x 3764 mm	8'10" x 12'4"
Utility	1993 x 1855 mm	6'6" x 6'1"
WC	1976 x 884 mm	6'6" x 2'11"



### First Floor

Bedroom 1	3243 x 4329 mm	10'8" x 14'2"
Bedroom 2	3171 x 3782 mm	10'5" x 12'5"
Bedroom 3	3214 x 3275 mm	10'7" x 10'9"
En Suite	2104 x 1416 mm	6'11" x 4'8"
Bathroom	1951 x 1929 mm	6'5" x 6'4"

<b>KEY</b>	B	Boiler	td	Tumble dryer space	WFH	Working from home space
	ST	Store	dw	Dishwasher space	W	Wardrobe space
	wm	Washing machine space	t/f	Fridge/freezer space	↗	Dimension location



We are on the New Homes Quality Code register of registered developers. "We" refers to the Barratt Developments PLC group brands including Barratt London, Barratt Homes and David Wilson Homes. All images used are for illustrative purposes. The images and the dimensions given are illustrative for this house type and individual properties may differ. Please check with your Sales Adviser in respect of individual properties. We give maximum dimensions within each room which includes areas of fixtures and fittings including fitted furniture. These dimensions should not be used for carpet or flooring sizes, appliance spaces or items of furniture. All images, photographs, dimensions and energy efficiency features depicted are not intended to be relied upon for, nor to form part of, any contract unless specifically incorporated in writing into the contract.

# DERWENT

## 3 BEDROOM HOME



Electric car charging point



Waste Water Heat Recovery Systems



Flue Gas Heat Recovery



Photovoltaic panels



Decentralised mechanical extract ventilation (d-MEV)



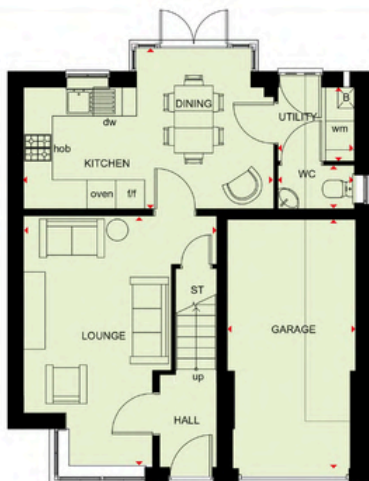
Highly-efficient insulation



A/B EPC rating



Argon-filled double-glazing



### Ground Floor

Lounge	5212 x 4015 mm	17'1" x 13'2"
Kitchen/Dining	5201 x 3349 mm	17'1" x 11'0"
Utility	1585 x 1533 mm	5'2" x 5'0"
WC	1585 x 903 mm	5'2" x 3'0"
Garage	5143 x 2663 mm	16'10" x 8'9"

(Approximate dimensions)



### First Floor

Bedroom 1	3660 x 2766 mm	12'0" x 9'1"
En suite	2113 x 1193 mm	6'11" x 3'11"
Dressing Area	2113 x 1666 mm	6'11" x 5'6"
Bedroom 2	3562 x 3072 mm	11'8" x 10'1"
Bedroom 3	3289 x 1977 mm	10'9" x 6'6"
Bathroom	1925 x 1913 mm	6'4" x 6'3"

(Approximate dimensions)

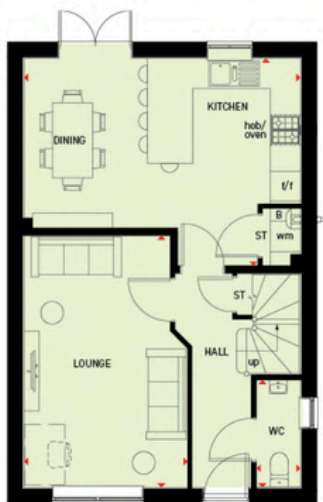
<b>KEY</b>	B Boiler	td Tumble dryer space	WFH Working from home space
ST	Store	dw Dishwasher space	W Wardrobe space
wm	Washing machine space	f/f Fridge/freezer space	➔ Dimension location



We are on the New Homes Quality Code register of registered developers. "We" refers to the Barratt Developments PLC group brands including Barratt London, Barratt Homes and David Wilson Homes. All images used are for illustrative purposes. The images and the dimensions given are illustrative for this house type and individual properties may differ. Please check with your Sales Adviser in respect of individual properties. We give maximum dimensions within each room which includes areas of fixtures and fittings, including fitted furniture. These dimensions should not be used for carpet or flooring sizes, appliance spaces or items of furniture. All images, photographs, dimensions and energy efficiency features depicted are not intended to be relied upon for, nor to form part of, any contract unless specifically incorporated in writing into the contract.



## 3 BEDROOM HOME



Lounge	3231 x 5306 mm	10'6" x 17'4"
Kitchen/Dining	5479 x 4594 mm	18'0" x 15'1"
WC	881 x 1275 mm	2'11" x 5'10"

Floor plan of the second floor. The layout includes:

- BED 1**: Large bedroom at the bottom left with an **EN-SUITE** bathroom and a **W** (wardrobe).
- BED 2**: Bedroom at the top left with a **W** (wardrobe).
- BED 3 / STUDY**: Bedroom at the top right with a **W** (wardrobe).
- BATH**: Bathroom located between BED 3 and the central landing.
- DRESSING AREA**: Located between the central landing and BED 3.
- LANDING**: Central area with a staircase leading down.
- HALLWAY**: A central hallway connecting the rooms.
- W**: Wardrobes are located in BED 1, BED 2, BED 3, and the Dressing Area.
- EN-SUITE**: Attached bathroom to BED 1.
- BATH**: Main bathroom located near the landing.

Bedroom 1	2732 x 4485 mm	9'0" x 14'9"
Bedroom 2	2391 x 3447 mm	7'10" x 11'4"
Dressing Room	2672 x 3530 mm	8'9" x 11'7"
Bedroom 4	3013 x 2499 mm	9'11" x 8'2"
En suite	2194 x 1564 mm	3'11" x 6'9"
Bathroom	1698 x 2056 mm	5'7" x 6'10"

KEY	B	Boiler	BH/ST	Bulkhead Store Washing	f/f	Fridge freezer space	W	Wardrobe space
	ST	Store	wm	machine space	td	Tumble dryer space	↔	Dimension location
	BH	Bulkhead	dw	Dishwasher space	WFH	Working from home space		



are on the New Home Quality Code register of registered developers." refers to the Barratt Developments PLC group brands including Barratt London, Barratt Homes and David Wilson Homes. All images used are for illustrative purposes. The images and the dimensions given are illustrative for this type of product and individual properties may differ. Please check with your Sales Advisor in respect of individual properties. We give maximum dimensions within each room which includes areas of fixtures and fittings including fitted furniture. These dimensions should not be used for carpet or flooring sizes, appliance spaces or items of furniture. All images, photographs, dimensions and energy efficiency features depicted are not intended to be relied upon for, nor to form part of, any contract unless specifically incorporated in writing into the contract.

# QUEENSVILLE

## 3 BEDROOM HOME



Electric car  
charging point



Waste Water Heat  
Recovery Systems



Flue Gas Heat  
Recovery



Photovoltaic  
panels



Decentralised  
mechanical  
extract ventilation  
(d-MEV)



Highly-efficient  
insulation



A/B EPC  
rating



Argon-filled  
double-glazing



### Ground Floor

Dining/Family	3931 x 4800 mm	12'11" x 15'9"
Kitchen	1866 x 3060 mm	6'1" x 10'0"
Study	1866 x 2744 mm	6'1" x 9'0"
WC	860 x 1615 mm	2'10" x 5'4"



### First Floor

Lounge	3936 x 3625 mm	12'11" x 11'11"
Bedroom 1	3936 x 3037 mm	12'11" x 10'0"
En Suite	1551 x 2163 mm	5'1" x 7'1"

\* Windows may be omitted on certain plots. Speak to Sales Adviser for details on individual plans.



### Second Floor

Bedroom 2	3936 x 3503 mm	12'11" x 11'6"
Bedroom 3	3936 x 3488 mm	12'11" x 11'5"
Bathroom	1705 x 1963 mm	5'7" x 6'5"

\* Windows may be omitted on certain plots. Speak to Sales Adviser for details on individual plans.

**KEY** B Boiler  
ST Store  
wm Washing machine space

td Tumble dryer space  
dw Dishwasher space  
f/f Fridge/freezer space

WFH Working from home space  
W Wardrobe space  
◀▶ Dimension location



We are on the New Homes Quality Code register of registered developers. "We" refers to the Barratt Developments PLC group brands including Barratt London, Barratt Homes and David Wilson Homes. All images used are for illustrative purposes. The images and the dimensions given are illustrative for this house type and individual properties may differ. Please check with your Sales Adviser in respect of individual properties. We give maximum dimensions within each room which includes areas of fixtures and fittings including fitted furniture. These dimensions should not be used for carpet or flooring sizes, appliance spaces or items of furniture. All images, photographs, dimensions and energy efficiency features depicted are not intended to be relied upon for, nor to form part of, any contract unless specifically incorporated in writing into the contract.

# NORBURY

## 3 BEDROOM HOME



Electric car charging point



Waste Water Heat Recovery Systems



Flue Gas Heat Recovery



Photovoltaic panels



Decentralised mechanical extract ventilation (d-MEV)



Highly-efficient insulation



A/B EPC rating



Argon-filled double-glazing



### Ground Floor

Lounge/Dining	4056 x 4986mm	13'4" x 16'4"
Kitchen	1900 x 3910mm	6'3" x 12'10"
WC	860 x 1976mm	2'10" x 6'6"

(Approximate dimensions)

### First Floor

Bedroom 2	4056 x 2960mm	13'4" x 9'9"
Bedroom 3	4056 x 3381mm	13'4" x 11'1"
Bathroom	1698 x 2146mm	5'7" x 7'0"

(Approximate dimensions)

### Second Floor

Bedroom 1/ Dressing	4056 x 8663mm	13'4" x 28'5"
En suite	1858 x 2524mm	6'1" x 8'3"

(Approximate dimensions)

\* Window may not be available on certain plots. Speak to Sales Adviser for details on individual plans

<b>KEY</b>	B	Boiler
	ST	Store
	wm	Washing machine space

td	Tumble dryer space
dw	Dishwasher space
f/f	Fridge/freezer space

WFH	Working from home space
W	Wardrobe space
↗	Dimension location



We are on the New Homes Quality Code register of registered developers. "We" refers to the Barratt Developments PLC group brands including Barratt London, Barratt Homes and David Wilson Homes. All images used are for illustrative purposes. The images and the dimensions given are illustrative for this house type and individual properties may differ. Please check with your Sales Adviser in respect of individual properties. We give maximum dimensions within each room which includes areas of fixtures and fittings including fitted furniture. These dimensions should not be used for carpet or flooring sizes, appliance spaces or items of furniture. All images, photographs, dimensions and energy efficiency features depicted are not intended to be relied upon for, nor to form part of, any contract unless specifically incorporated in writing into the contract.



# HESKETH

## 4 BEDROOM HOME



Electric car  
charging point



Waste Water Heat  
Recovery Systems



Flue Gas Heat  
Recovery



Photovoltaic  
panels



Decentralised  
mechanical  
extract ventilation  
(d-MEV)



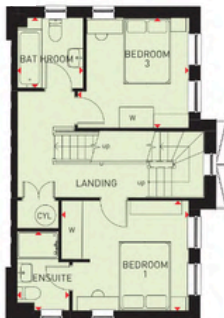
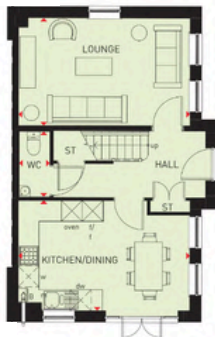
Highly-efficient  
insulation



A/B EPC  
rating



Argon-filled  
double-glazing



### Ground Floor

Lounge	4958 x 3108 mm	16'3" x 10'2"
Kitchen / Dining	4958 x 3175 mm	16'3" x 10'5"
WC	886 x 1889 mm	2'11" x 6'2"

(Approximate dimensions)

### First Floor

Bedroom 1	3679 x 3175 mm	12'1" x 10'5"
En Suite	1511 x 2282 mm	4'11" x 7'6"
Bedroom 3	3215 x 3175 mm	10'7" x 10'5"
Bathroom	1903 x 2038 mm	6'3" x 6'8"

(Approximate dimensions)

### Second Floor

Bedroom 2	4076 x 3382 mm	13'4" x 11'1"
Bedroom 4	4076 x 3175 mm	13'4" x 10'5"
Shower Room	1410 x 2168 mm	4'8" x 7'1"

(Approximate dimensions)

<b>KEY</b>	B	Boiler	td	Tumble dryer space	WFH	Working from home space
	ST	Store	d/w	Dishwasher space	W	Wardrobe space
	wm	Washing machine space	f/f	Fridge/freezer space	◀▶	Dimension location



We are on the New Homes Quality Code register of registered developers. "We" refers to the Barratt Developments PLC group brands including Barratt London, Barratt Homes and David Wilson Homes. All images used are for illustrative purposes. The images and the dimensions given are illustrative for this house type and individual properties may differ. Please check with your Sales Adviser in respect of individual properties. We give maximum dimensions within each room which includes areas of fixtures and fittings including fitted furniture. These dimensions should not be used for carpet or flooring sizes, appliance spaces or items of furniture. All images, photographs, dimensions and energy efficiency features depicted are not intended to be relied upon for, nor to form part of, any contract unless specifically incorporated in writing into the contract.

# BRENTFORD

## 3 BEDROOM HOME



Electric car  
charging point



Waste Water Heat  
Recovery Systems



Flue Gas Heat  
Recovery



Photovoltaic  
panels



Decentralised  
mechanical  
extract ventilation  
(d-MEV)



Highly-efficient  
insulation



A/B EPC  
rating



Argon-filled  
double-glazing



### Ground Floor

Kitchen/Dining	3771 x 3576 mm	12'4" x 11'9"
Family room	3784 x 3677 mm	12'5" x 12'1"
WC	1579 x 873 mm	5'2" x 2'10"

(Approximate dimensions)



### First Floor

Lounge	3784 x 3585 mm	12'5" x 11'9"
Bedroom 2	3784 x 3339 mm	12'5" x 10'11"
Bathroom	1700 x 1834 mm	5'7" x 6'0"

(Approximate dimensions)



### First Floor

Bedroom 1	3784 x 4806 mm	12'5" x 15'9"
Bedroom 3	3784 x 2672 mm	12'5" x 8'9"
Shower	1567 x 2382 mm	5'2" x 7'10"

(Approximate dimensions)

<b>KEY</b>	B	Boiler	td	Tumble dryer space	WFH	Working from home space
	ST	Store	dw	Dishwasher space	W	Wardrobe space
	wm	Washing machine space	f/f	Fridge/freezer space	↗	Dimension location



We are on the New Homes Quality Code register of registered developers. "We" refers to the Barratt Developments PLC group brands including Barratt London, Barratt Homes and David Wilson Homes. All images used are for illustrative purposes. The images and the dimensions given are illustrative for this house type and individual properties may differ. Please check with your Sales Adviser in respect of individual properties. We give maximum dimensions within each room which includes areas of fixtures and fittings including fitted furniture. These dimensions should not be used for carpet or flooring sizes, appliance spaces or items of furniture. All images, photographs, dimensions and energy efficiency features depicted are not intended to be relied upon for, nor to form part of, any contract unless specifically incorporated in writing into the contract.

# ALDERNEY

## 4 BEDROOM HOME



Electric car charging point



Waste Water Heat Recovery Systems



Flue Gas Heat Recovery



Photovoltaic panels



Decentralised mechanical extract ventilation (d-MEV)



Highly-efficient insulation



A/B EPC rating



Argon-filled double-glazing



### Ground Floor

Lounge	3095 x 5143 mm	10'2" x 16'10"
Kitchen/Breakfast/Family	4623 x 4598 mm	15'2" x 15'1"
Dining	2967 x 3307 mm	9'9" x 10'10"
WC	854 x 1641 mm	2'10" x 5'5"

(Approximate dimensions)



### First Floor

Bedroom 1	4618 x 3104 mm	15'2" x 10'2"
En Suite	1191 x 2075 mm	3'11" x 6'10"
Bedroom 2	4510 x 3110 mm	14'10" x 10'2"
Bedroom 3	3737 x 3110 mm	12'3" x 10'2"
Bedroom 4	2148 x 2270 mm	7'1" x 7'5"
Bathroom	1702 x 2075 mm	5'7" x 6'10"

(Approximate dimensions)

<b>KEY</b>	B Boiler	td Tumble dryer space	WFH Working from home space
ST Store	dw Dishwasher space	W Wardrobe space	
wm Washing machine space	f/f Fridge/freezer space	Dimension location	



We are on the New Homes Quality Code register of registered developers. "We" refers to the Barratt Developments PLC group brands including Barratt London, Barratt Homes and David Wilson Homes. All images used are for illustrative purposes. The images and the dimensions given are illustrative for this house type and individual properties may differ. Please check with your Sales Adviser in respect of individual properties. We give maximum dimensions within each room which includes areas of fixtures and fittings including fitted furniture. These dimensions should not be used for carpet or flooring sizes, appliance spaces or items of furniture. All images, photographs, dimensions and energy efficiency features depicted are not intended to be relied upon for, nor to form part of, any contract unless specifically incorporated in writing into the contract.



# ASHBURTON

## 4 BEDROOM HOME



Electric car  
charging point



Waste Water Heat  
Recovery Systems



Flue Gas Heat  
Recovery



Photovoltaic  
panels



Decentralised  
mechanical  
extract ventilation  
(d-MEV)



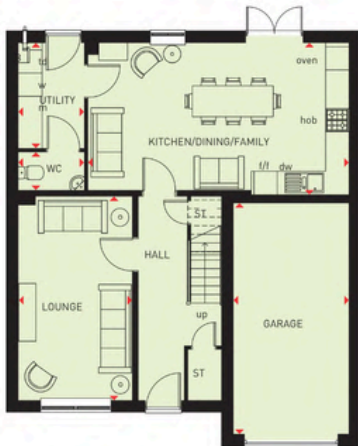
Highly-efficient  
insulation



A/B EPC  
rating



Argon-filled  
double-glazing



### Ground Floor

Lounge	2947 x 5270 mm	9'8" x 17'3"
Kitchen/Dining/Family	6772 x 3910 mm	22'3" x 12'10"
Utility	1700 x 2723 mm	5'7" x 8'11"
WC	1666 x 966 mm	5'6" x 3'2"
Garage	3015 x 6000 mm	9'11" x 19'8"

(Approximate dimensions)



### First Floor

Bedroom 1	3222 x 4323 mm	10'7" x 14'2"
En Suite	2185 x 1395 mm	7'2" x 4'7"
Bedroom 2	3111 x 3950 mm	10'2" x 13'0"
Bedroom 3	3227 x 5569 mm	10'7" x 18'3"
Bedroom 4	3067 x 3288 mm	10'1" x 10'9"
Study	2046 x 2313 mm	6'9" x 7'7"
Bathroom	2095 x 2681 mm	6'10" x 8'10"

(Approximate dimensions)

<b>KEY</b>	B	Boiler	td	Tumble dryer space	WFH	Working from home space
	ST	Store	dw	Dishwasher space	W	Wardrobe space
	wm	Washing machine space	f/f	Fridge/freezer space	↔	Dimension location



We are on the New Homes Quality Code register of registered developers. "We" refers to the Barratt Developments PLC group brands including Barratt London, Barratt Homes and David Wilson Homes. All images used are for illustrative purposes. The images and the dimensions given are illustrative for this house type and individual properties may differ. Please check with your Sales Adviser in respect of individual properties. We give maximum dimensions within each room which includes areas of fixtures and fittings including fitted furniture. These dimensions should not be used for carpet or flooring sizes, appliance spaces or items of furniture. All images, photographs, dimensions and energy efficiency features depicted are not intended to be relied upon for, nor to form part of, any contract unless specifically incorporated in writing into the contract.

## 4 BEDROOM HOME



Electric car  
charging point



Waste Water Heat  
Recovery Systems



Flue Gas Heat  
Recovery



Photovoltaic  
panels



Decentralised  
mechanical  
extract ventilation  
(d-MEV)



Highly-efficient  
insulation



A/B EPC  
rating



Argon-filled  
double-glazing



### Ground Floor

Lounge	3380 x 5160 mm	11'1" x 16'11"
Kitchen/Dining/Family	5511 x 3995 mm	18'1" x 13'1"
Utility	1982 x 1696 mm	6'6" x 5'7"
WC	997 x 1662 mm	3'3" x 5'5"



### First Floor

Bedroom 1	3536 x 3990 mm	11'7" x 13'1"
En Suite	2698 x 1804 mm	8'10" x 5'11"
Bedroom 2	3536 x 3617 mm	11'7" x 11'10"
Bathroom	2076 x 1989 mm	6'10" x 6'6"
Bedroom 3	3463 x 3655 mm	11'4" x 12'0"
Bedroom 4	3107 x 3458 mm	10'2" x 11'4"

<b>KEY</b>	B	Boiler Store	dw	Dishwasher space	BH/ST	Bulkhead Store
	ST	machine space	l/f	Fridge/freezer space	W	Wardrobe space
	wm		WFH	Working From Home space	♦♦	Dimension location



# ALNMOUTH

## 4 BEDROOM HOME



Electric car charging point



Waste Water Heat Recovery Systems



Flue Gas Heat Recovery



Photovoltaic panels



Decentralised mechanical extract ventilation (d-MEV)



Highly-efficient insulation



A/B EPC rating



Argon-filled double-glazing



### Ground Floor

Lounge	5748 x 3550 mm	18'9" x
Kitchen / Family	5675 x 4510 mm	11'48" x
Study	2912 x 2048 mm	14'8" x 9'6" x
Dining	3324 x 2912 mm	10'9'6" x
Utility	1907 x 1599 mm	9'6'3" x 5'2"
WC	1765 x 884 mm	5'8" x 2'9"

(Approximate dimensions)



### First Floor

Bedroom 1	5519 x 2896 mm	18'1" x 9'5"
En Suite	2250 x 1408 mm	7'4" x 4'6"
Bedroom 2	4662 x 3769 mm	15'3" x 12'4"
Bedroom 3	4035 x 3375 mm	13'2" x 11'1"
Bedroom 4	4289 x 2700 mm	14'1" x 8'9"
Bathroom	2739 x 2421 mm	8'10" x 7'9"

(Approximate dimensions)

<b>KEY</b>	B	Boiler	td	Tumble dryer space	WFH	Working from home space
	ST	Store	dw	Dishwasher space	W	Wardrobe space
	wm	Washing machine space	t/f	Fridge/freezer space		Dimension location

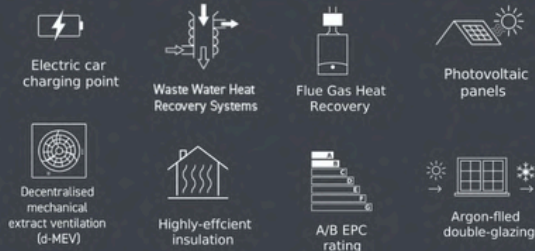


We are on the New Homes Quality Code register of registered developers. "We" refers to the Barratt Developments PLC group brands including Barratt London, Barratt Homes and David Wilson Homes. All images used are for illustrative purposes. The images and the dimensions given are illustrative for this house type and individual properties may differ. Please check with your Sales Adviser in respect of individual properties. We give maximum dimensions within each room which includes areas of fixtures and fittings including fitted furniture. These dimensions should not be used for carpet or flooring sizes, appliance spaces or items of furniture. All images, photographs, dimensions and energy efficiency features depicted are not intended to be relied upon for, nor to form part of, any contract unless specifically incorporated in writing into the contract.



# CAMBERLEY

## 4 BEDROOM HOME



### Ground Floor

Lounge	3698 x 5383 mm	12'1" x 17'8"
Kitchen/Dining	4000 x 8447 mm	13'1" x 27'9"
Study	2383 x 2273 mm	7'10" x 7'5"
Utility	1655 x 1592 mm	5'5" x 5'3"
WC	850 x 1655 mm	2'9" x 5'5"



### First Floor

Bedroom 1	3856 x 3617 mm	12'8" x 11'8"
En Suite	2617 x 1405 mm	8'7" x 4'6"
Bedroom 2	4650 x 3249 mm	15'2" x 10'6"
Bedroom 3	3577 x 3161 mm	11'7" x 10'4"
Bedroom 4	3369 x 2963 mm	11'1" x 9'7"
Bathroom	1926 x 2137 mm	6'4" x 7'0"

(Approximate dimensions)

<b>KEY</b>	B	Boiler Store Washing machine space	dw	Dishwasher space	BH/ST	Bulkhead Store
	ST		I/I	Fridge/freezer space	W	Wardrobe space
	wm		WFH	Working From Home space	♦♦	Dimension location



# RADLEIGH

## 4 BEDROOM HOME



Electric car  
charging point



Waste Water Heat  
Recovery Systems



Flue Gas Heat  
Recovery



Photovoltaic  
panels



Decentralised  
mechanical  
extract ventilation  
(d-MEV)



Highly-efficient  
insulation



A/B EPC  
rating



Argon-filled  
double-glazing



### Ground Floor

Kitchen/Dining	8110 x 3578 mm	26'7" x 11'9"
Lounge	3361 x 5041 mm	11'0" x 16'6"
Utility	1558 x 1655 mm	5'1" x 5'5"
Study	2273 x 2153 mm	7'5" x 7'1"
WC	850 x 1621 mm	2'9" x 5'4"



### First Floor

Bedroom 1	3557 x 3853 mm	11'8" x 12'8"
Bedroom 2	3423 x 4335 mm	11'3" x 14'3"
Bedroom 3	2824 x 3345 mm	9'3" x 11'0"
Bedroom 4	2973 x 3147 mm	9'9" x 10'4"
Bathroom	2137 x 1694 mm	7'0" x 5'7"
En Suite	1465 x 2287 mm	4'10" x 7'6"

<b>KEY</b>	B	Boiler Store Washing machine space	dw	Dishwasher space	BH/ST	Bulkhead Store
	ST		t/f	Fridge/freezer space	W	Wardrobe space
	wm		WFH	Working From Home space	♦♦	Dimension location

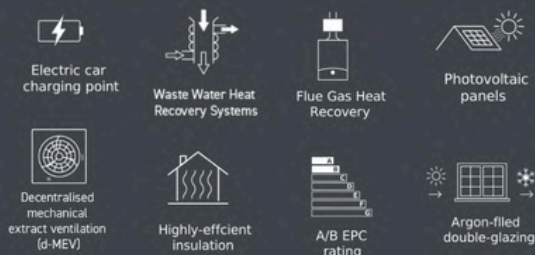


We are on the New Homes Quality Code register of registered developers. "We" refers to the Barratt Developments PLC group brands including Barratt London, Barratt Homes and David Wilson Homes. All images used are for illustrative purposes. The images and the dimensions given are illustrative for this house type and individual properties may differ. Please check with your Sales Adviser in respect of individual properties. We give maximum dimensions within each room which includes areas of fixtures and fittings including fitted furniture. These dimensions should not be used for carpet or flooring sizes, appliance spaces or items of furniture. All images, photographs, dimensions and energy efficiency features depicted are not intended to be relied upon for, nor to form part of, any contract unless specifically incorporated in writing into the contract.

B0W6561755/2/NE24

# LAMBERTON

## 5 BEDROOM HOME



### Ground Floor

Lounge	3385 x 4763 mm	11'1" x 15'8"
Kitchen/Dining/Family	8330 x 4088 mm	27'4" x 13'5"
Study / Dining	2712 x 3622 mm	8'11" x 11'11"
Utility	2039 x 1595 mm	6'8" x 5'3"
WC	1567 x 1067 mm	5'2" x 3'6"

(Approximate dimensions)



### First Floor

Bedroom 1	3750 x 4209 mm	12'4" x 13'10"
En suite	1490 x 2018 mm	4'11" x 6'7"
Bedroom 2	2706 x 3916 mm	8'11" x 12'10"
Bedroom 3	3385 x 3893 mm	11'1" x 12'9"
Bedroom 4	3018 x 3916 mm	9'11" x 12'10"
Bedroom 5	2523 x 2305 mm	8'3" x 7'7"
Bathroom	1953 x 2931 mm	6'5" x 9'7"

(Approximate dimensions)

<b>KEY</b>	B	Boiler	td	Tumble dryer space	WFH	Working from home space
	ST	Store	dw	Dishwasher space	W	Wardrobe space
	wm	Washing machine space	t/f	Fridge/freezer space	◀▶	Dimension location

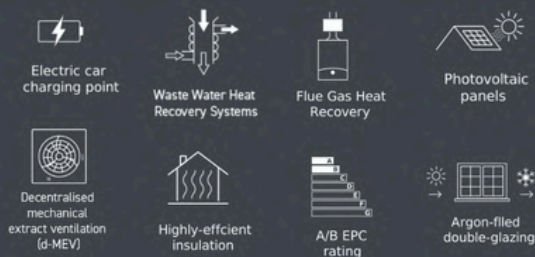


We are on the New Homes Quality Code register of registered developers. "We" refers to the Barratt Developments PLC group brands including Barratt London, Barratt Homes and David Wilson Homes. All images used are for illustrative purposes. The images and the dimensions given are illustrative for this house type and individual properties may differ. Please check with your Sales Adviser in respect of individual properties. We give maximum dimensions within each room which includes areas of fixtures and fittings including fitted furniture. These dimensions should not be used for carpet or flooring sizes, appliance spaces or items of furniture. All images, photographs, dimensions and energy efficiency features depicted are not intended to be relied upon for, nor to form part of, any contract unless specifically incorporated in writing into the contract.



# MARLOWE

## 5 BEDROOM HOME



### Ground Floor

Lounge	3478 x 6988 mm	11'5" x
Kitchen/Family	3384 x 6282 mm	22'11" x 20'7"
Dining	3184 x 3357 mm	10'5" x 11'0"
WC Utility	909 x 1600 mm	3'0" x 5'3"
	2061 x 1784 mm	6'9" x 5'10"

(Approximate dimensions)

### First Floor

Bedroom 1	3184 x 6282 mm	10'5" x 20'7"
En Suite	3384 x 2849 mm	11'1" x 9'4"
Bedroom 2	3483 x 3673 mm	11'5" x 12'1"
En Suite 2	2062 x 1632 mm	6'9" x 5'4"
Bedroom 3	3483 x 2656 mm	11'5" x 8'9"
Bathroom	3076 x 1698 mm	10'2" x 5'7"

(Approximate dimensions)

### Second Floor

Bedroom 4	3458 x 5078 mm	11'4" x 16'8"
Bedroom 5	3246 x 3214 mm	10'8" x 10'7"
Shower	2241 x 1576 mm	7'4" x 5'2"

(Approximate dimensions)

<b>KEY</b>	B	Boiler	td	Tumble dryer space	WFH	Working from home space
	ST	Store	dW	Dishwasher space	W	Wardrobe space
	wm	Washing machine space	f/f	Fridge/freezer space	◀▶	Dimension location



We are on the New Homes Quality Code register of registered developers. "We" refers to the Barratt Developments PLC group brands including Barratt London, Barratt Homes and David Wilson Homes. All images used are for illustrative purposes. The images and the dimensions given are illustrative for this house type and individual properties may differ. Please check with your Sales Adviser in respect of individual properties. We give maximum dimensions within each room which includes areas of fixtures and fittings including fitted furniture. These dimensions should not be used for carpet or flooring sizes, appliance spaces or items of furniture. All images, photographs, dimensions and energy efficiency features depicted are not intended to be relied upon for, nor to form part of, any contract unless specifically incorporated in writing into the contract.

# DEPOSIT BOOST WE COULD HELP YOU MOVE SOONER THAN YOU THINK

If you have a 10% deposit, we could boost it by a further 5%



- 85% Mortgage  
£306,000
- 10% Customer's Deposit  
£36,000
- 5% Barratt Homes Deposit Boost  
£18,000

Example home value

£360,000

## LET'S GIVE YOUR PLANS A BOOST



Available to first-time buyers and existing homeowners



We could boost your deposit by 5%



So you would need a smaller mortgage

\*Full terms apply. Please speak to our sales team for further details



**BARRATT**  
HOMES

# MOVEMAKER

Take the hassle out of selling your existing home. We could get you moving to a brand new Barratt home in just 5 simple steps.

1

## FIND YOUR HOME

Discover your ideal new home at your chosen development and complete a Movemaker application.

2

## VALUE YOUR EXISTING PROPERTY

We will instruct two estate agents who will arrange independent valuations of your current property.

3

## AGREE THE SELLING PRICE

Once a price is agreed the Movemaker agreement can then be completed and the estate agent will begin to market your property.

4

## FIND A BUYER

The estate agent will help to complete the sale smoothly and efficiently. Remember, we will cover their fees then manage the sale for you.

5

## MOVING DAY

Now you can move into your dream Barratt home, saving money and hassle.

Offer available on selected plots only, terms and conditions apply. Speak to one of our sales advisers now or visit our website. Following withdrawal or termination of any offer, we reserve the right to extend, reintroduce or amend any such offer as we see fit at any time. Purchasers must sign a Movemaker Agreement with us. Offer is subject to use of a Barratt Homes nominated estate agent to market and sell your existing home. Barratt Homes will pay the nominated estate agent's fees provided you go on to buy a new Barratt home.



**BARRATT**  
— HOMES —





## NEW HOMES QUALITY CODE

Housebuilders and developers who build new homes will be expected to register with the New Homes Quality Board (NHQB). As long as a housebuilder or developer has followed the correct registration process, including completing the necessary training, introducing a complaints procedure, and following other processes and procedures that are needed to meet the requirements of this New Homes Quality Code (the code), they will become a registered developer.

Registered developers agree to follow the code and the New Homes Ombudsman Service, including accepting the decisions of the New Homes Ombudsman in relation to dealings with customers. If a registered developer does not meet the required standards, or fails to accept and act in line with the decisions of the New Homes Ombudsman, they may have action taken against them, including being removed from the register of registered developers.

The code sets out the requirements that registered developers must meet. The code may be updated from time to time to reflect changes to industry best practice as well as the decisions of the New Homes Ombudsman Service.

All homes built by registered developers must meet building-safety and other regulations. All registered developers should aim to make sure there are no snags or defects in their properties before the keys are handed over to a customer. If there are any snags or defects, these should be put right within the agreed timescales.

### WHAT THE CODE COVERS

For the purposes of this code, 'customer' means a person who is buying or intends to buy a new home which they will live in or give to another person. (If a new home is being bought in joint names, 'the customer' includes all the joint customers.) However, the New Homes Quality Board have also started work to consider other groups of customers and what they should be able to expect from a new home. This includes shared owners and people who are buying a new home to let to other people. Any changes the New Homes Quality Board make to the code to reflect the needs of other groups of customers will be developed through consultation, and they will continually assess and review the effectiveness of the code, and any new laws or regulations that apply. Other areas which are not covered by the code are claims for loss of property value or blight (where a property falls in value or becomes difficult to sell because of major public work in the area), personal injury or claims that are not covered by the scheme rules of the New Homes Ombudsman Service.