

# WALDMERS WOOD

Walmersley Old Road, Walmersley, Bury, Greater Manchester BL9 6SB



A RANGE OF TWO, THREE AND FOUR BEDROOM HOMES



# THE CONSUMER CODE

The Consumer Code for Home Builders (“the Code”), which came into effect in April 2010, applies to all Home Builders registered with the UK’s main new Home Warranty Bodies; NHBC, Premier Guarantee and LABC Warranty.

The Code gives protection and rights to purchasers of new Homes. It requires all new Home Buyers to be treated fairly and ensure they are fully informed about their purchase before and after they sign the contract.

The aim of the Code is for all new Home Buyers to:

- be treated fairly,
- know what levels of service to expect,
- be given reliable information about their purchase and their consumer rights before and after they move in, and
- know how to access speedy, low-cost dispute resolution arrangements to deal with complaints about breaches of the Code

The Code reinforces best practice among Home Builders to encourage a consistently high level of information and customer service. It builds on successful efforts already made by the industry to improve consumer satisfaction in recent years.

The Code covers every stage of the home-buying purchase – pre-contract, exchange of contract and during occupation.

As a 5 star housebuilder we are committed to the Consumer Code for Home Builders. For more information on the Consumer Code for Home Builders please visit <http://www.consumercode.co.uk/>





# BUYING A **NEW** HOME IS AN EXCITING JOURNEY

## HERE ARE 5 REASONS WHY YOU SHOULD MOVE WITH BARRATT

### 1. Award winners, time and time again

Barratt customers are delighted with their new homes. In fact, more than 90% of them would recommend us to a friend. Their high praise has ensured that we've\* been accredited with a 5 Star rating from the Home Builders Federation more times than any other national major housebuilder.

Our Site Managers have picked up more awards than any other housebuilder, winning NHBC Pride in the Job awards for quality workmanship and demonstrating our dedication and commitment to building homes of the very highest standard.

### 2. 10 years peace of mind

The NHBC warranty and insurance policy, known as Buildmark, is designed to give you peace of mind. Buildmark provides the following cover:

- Insolvency cover: If we become insolvent and are therefore unable to finish the construction of your home, NHBC may repay your deposit or any reasonable extra amount you have to pay for your home to be finished.
- Builder warranty period: For the first two years we are responsible for rectifying any defects covered by the warranty. The warranty is backed by NHBC's resolution service and guarantee.
- Insurance cover: In the eight years that follow the builder warranty period, NHBC provides insurance cover for damage caused by defects to certain parts of the home and also for contaminated land.

### 3. More choice, more style

When you've chosen the right home, you can get creative with additional finishes from our Choices^ range. You could have your home exactly the way you want it, when you choose your preferred flooring, furnishings, appliances, fixtures, fittings and much more. Choices is associated with the build stage of your home, so the earlier you reserve and start the process, the more options you can choose from, all fitted and waiting for you when you move in.

\*We' and 'only' refer to the Barratt Developments Plc Group Brands.

†First 2 years covered by Builder Warranty and NHBC Guarantee or similar. Years 3-10 covered by NHBC insurance or similar. Full exclusions and limitations can be found on the NHBC website. Available on virtually all of our developments.

Choices^ range is subject to build stage and additional cost.

Some of the features shown may not be available with every Barratt home or on every Barratt Homes development. Please speak to a Sales Adviser for details of the features available on the home and development you are interested in.

\*Source: GOV.UK. This figure represents the level of energy-efficiency of existing housing stock only (homes built up to 2007 when EPCs were introduced).

\*\*Source: Water UK

^Indicative figures, based on research from Briary Energy, April 2022



### 4. Creating places you'll love to live both inside and out

Our light, open-plan homes are really adaptable – every room can suit a variety of lifestyles. Whether you want space for the kids to play or more room to entertain friends, our fantastic range of homes can give you that flexibility. Our leading designers also factor real furniture sizes into their designs so your home won't be full of awkward nooks and crannies.

We also know our customers love green open spaces and we go to great lengths to maintain and enhance the local environment on our developments. In fact, we plant an average of 20 shrubs or trees for each home we build. Creating a beautiful and sustainable environment to live in.

### 5. Our energy-efficient homes could save you money

No matter how cold it is outside, you'll feel warm in a brand-new Barratt home. We use highly thermally efficient insulation and argon-filled double-glazing as standard, which allows the heat from the sun in whilst minimising heat loss. This means you could enjoy lower energy bills, whatever the weather. In fact, a brand-new home could be cheaper to run and save you thousands each year, compared to an updated Victorian equivalent^.

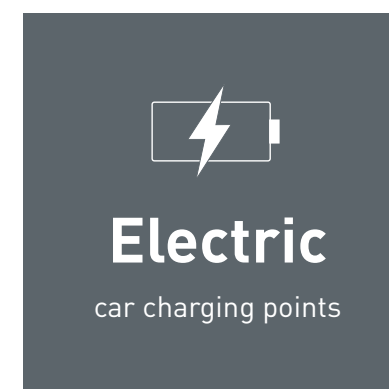
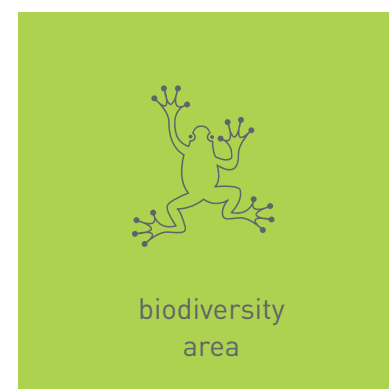
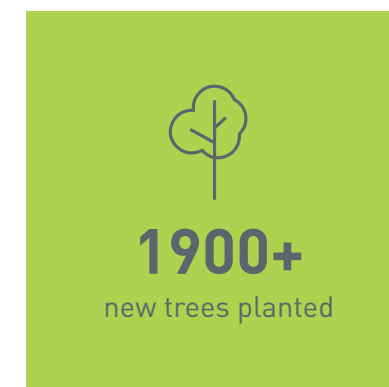
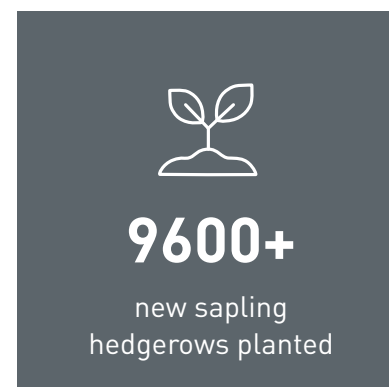
**Find out more, talk to one of our Sales Advisers today.**

# CREATING A SUSTAINABLE COMMUNITY WHERE FAMILIES AND NATURE CAN THRIVE

At Barratt Homes, we do more than simply craft beautiful homes and desirable developments.

We design and build great places that meet the highest standards, and that promote sustainable, healthy and happy living for our customers.

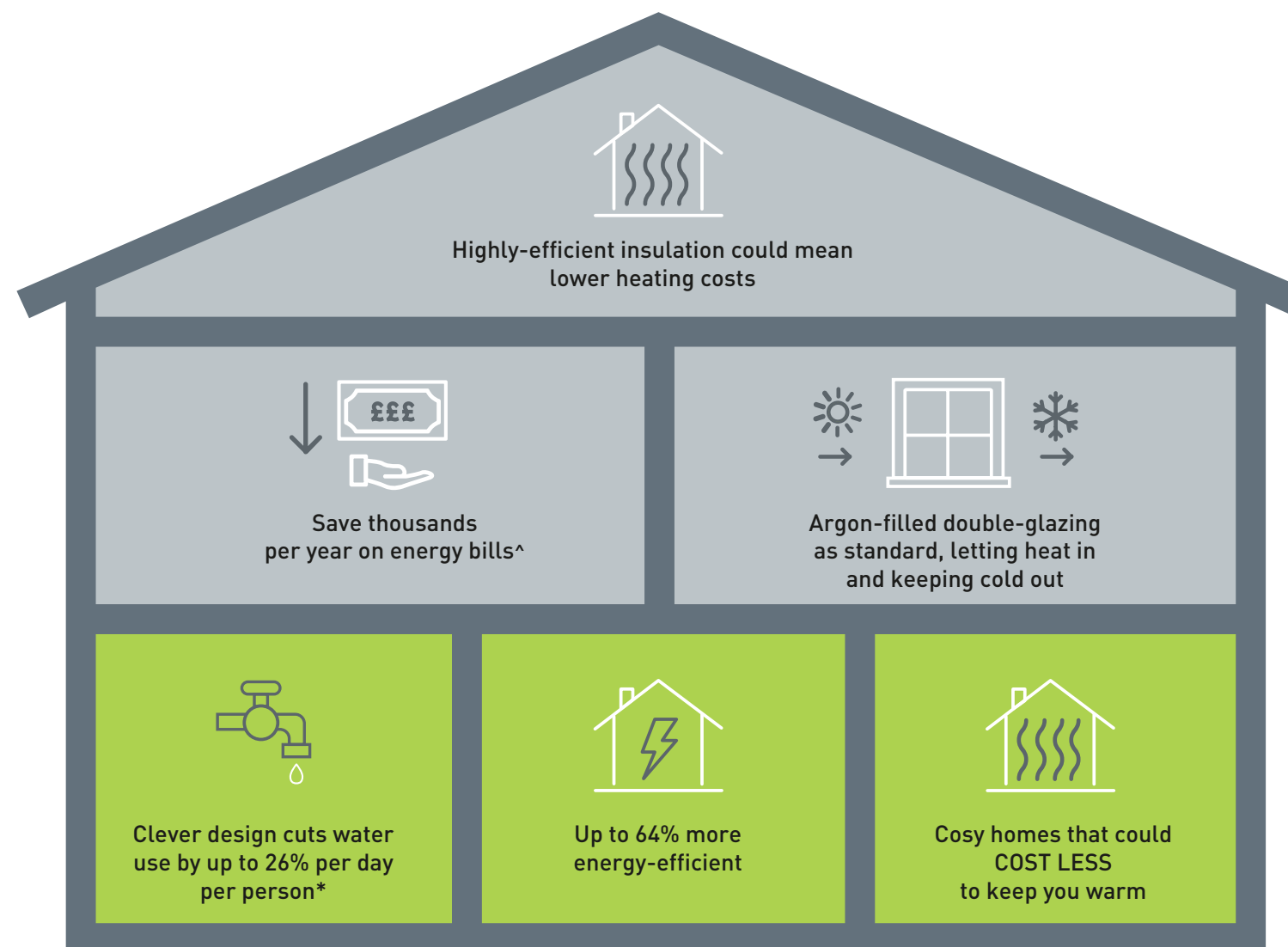
We know we must give our customers confidence that their homes are designed and built to meet the challenges of the future. We do this through creating places where people and nature can thrive.





# WE'RE HELPING TO MAKE YOUR HOME MORE ENERGY-EFFICIENT

We create low-carbon and efficient homes that are designed and built for better living and meet the challenges of the future.



<sup>^</sup>Indicative figures, based on HBF "Watt a Save" report published July 2023.

\*Source: [Water UK](#)



















'We', 'our', 'us' refers to the Barratt Developments PLC Group brands including Barratt Homes, David Wilson Homes and Barratt London. Some of the features shown may not be available with every Barratt home or on every Barratt development. Please speak to a Sales Adviser for details of the features available on the home and development you are interested in. To find out more about the energy-efficiency and sustainability of our homes visit our website. All images used are for illustrative purposes only. Information correct at time of publishing.



# WALDMERS WOOD, BURY

Walmersley Old Road, Walmersley, Greater Manchester BL9 6SB

## KEY

-  Alderney 4 bedroom home
-  Thornton 4 bedroom home
-  Kingsley 4 bedroom home
-  Halton 4 bedroom home
-  Windermere 4 bedroom home
-  Kingsville 3/4 bedroom home
-  Moresby 3 bedroom home
-  Lutterworth 3 bedroom home
-  Ellerton 3 bedroom home
-  Denford 2 bedroom home
-  Falkirk 2 bedroom apartment
-  Affordable homes
-  House Sparrow Nesting Terrace
-  Nest Brick
-  Bat Tube
-  Swift Nesting Brick
-  Electric Vehicle Charging Points
-  Wildflower Meadow

Positioning of our sustainability features are subject to change.  
Speak to a Sales Adviser for more information.



barratthomes.co.uk

  
**BARRATT**  
HOMES

Images and development layouts are for illustrative purposes, should be used for general guidance only and are not intended to form part of any contract or warranty unless specifically incorporated in writing. Development layouts including house types and tenures, the location of affordable housing, parking arrangements, play areas, landscaping and public open spaces are subject to change including any changes required due to a change in planning permission. Waldmers Wood is a marketing name only and may not be the designated postal address, which may be determined by The Post Office.

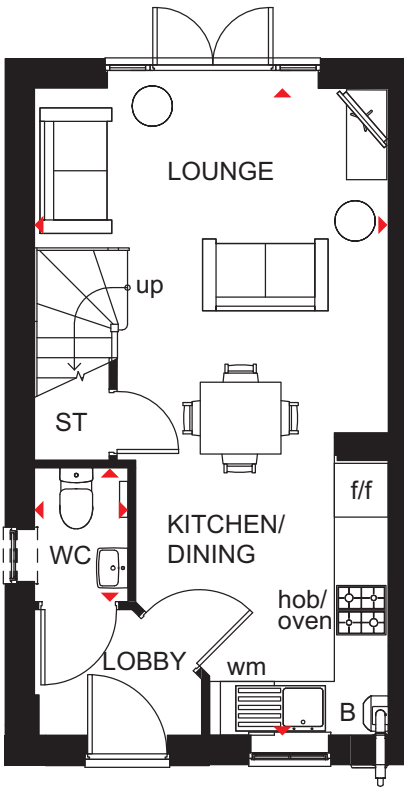


# DENFORD

## 2 BEDROOM HOME



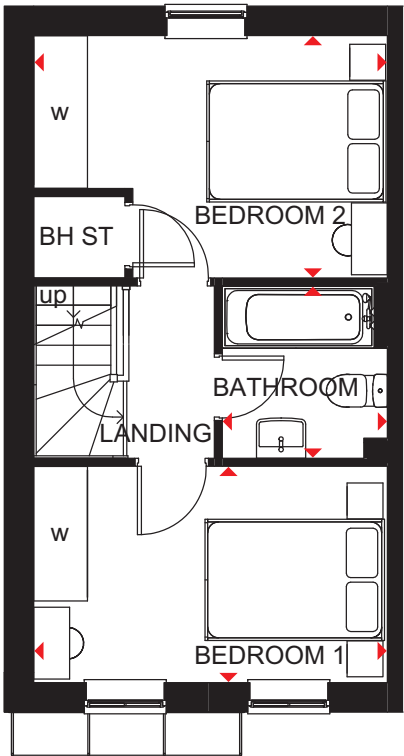
- Free-flowing living space creates a flexible home, ideal for first-time buyers and downsizers
- French doors lead to the rear garden giving the open-plan lounge, dining area and fitted kitchen a bright and airy feeling
- Upstairs are two double bedrooms and the bathroom



### Ground Floor

Kitchen/ Dining/Lounge	3943 x 7210mm	12'11" x 23'8"
WC	1040 x 1490mm	3'5" x 4'11"

(Approximate dimensions)



### First Floor

Bedroom 1	3943 x 2412mm	12'11" x 7'11"
Bedroom 2	3943 x 2702mm	12'11" x 8'10"
Bathroom	1840 x 1920mm	6'0" x 6'4"

(Approximate dimensions)

KEY	B	Boiler	wm	Washing machine space	◀▶	Dimension location
	ST	Store	f/f	Fridge/freezer space		
	BH ST	Bulkhead store	w	Wardrobe space		

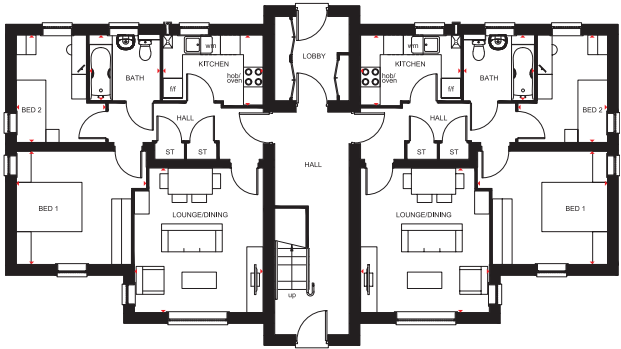


# FALKIRK

## 2 BEDROOM APARTMENT



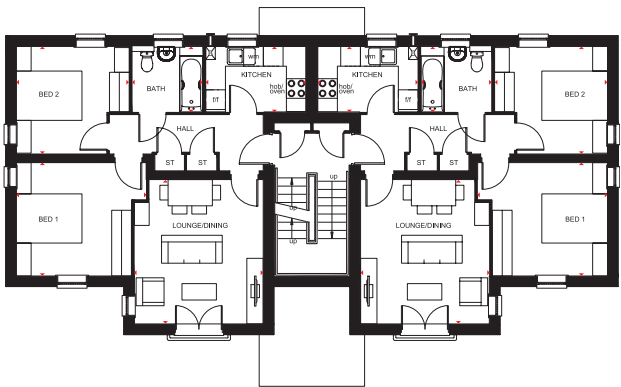
- Good-sized apartments designed for today's lifestyle
- Bright lounge with dining area, a separate fitted kitchen and a full sized bathroom
- A spacious main bedroom in all apartments, with a single bedroom in the ground floor apartment and a double bedroom in the first and second floor apartments, and all bedrooms having dual aspect



### Ground Floor

Lounge/Dining	3925 x 4400mm	12'11" x 14'5"
Kitchen	3060 x 2129mm	10'0" x 7'0"
Bedroom 1	3957 x 3450mm	13'0" x 11'4"
Bedroom 2	2719 x 3275mm	8'11" x 10'9"
Bathroom	2148 x 1994mm	7'1" x 6'7"

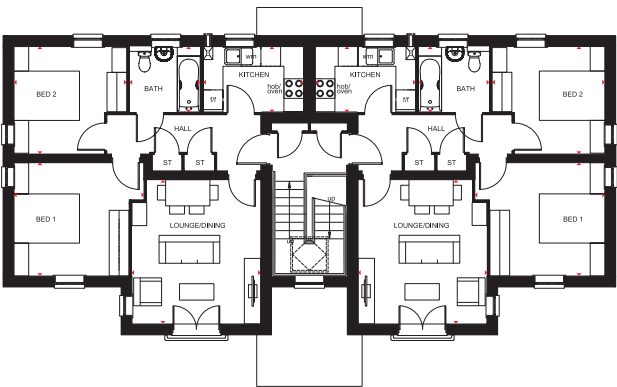
[Approximate dimensions]



### First Floor

Lounge/Dining	3925 x 4400mm	12'11" x 14'5"
Kitchen	3060 x 2000mm	10'0" x 6'7"
Bedroom 1	3957 x 3450mm	13'0" x 11'4"
Bedroom 2	3443 x 3275mm	11'4" x 10'9"
Bathroom	2148 x 1994mm	7'1" x 6'7"

[Approximate dimensions]



### Second Floor

Lounge/Dining	3925 x 4400mm	12'11" x 14'5"
Kitchen	3060 x 2000mm	10'0" x 6'7"
Bedroom 1	3957 x 3450mm	13'0" x 11'4"
Bedroom 2	3443 x 3275mm	11'4" x 10'9"
Bathroom	2148 x 1994mm	7'1" x 6'7"

[Approximate dimensions]

B Boiler  
ST Store  
wm Washing machine space

f/f Fridge/freezer space  
◀▶ Dimension location

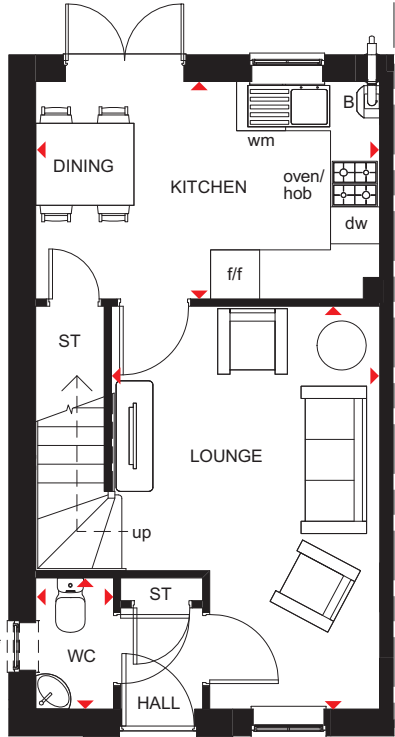


# BRANDON

## 3 BEDROOM HOME



- Modest home designed for modern living
- Front-aspect lounge leading to an open-plan fitted kitchen with dining area and French doors to the garden
- Spacious main bedroom upstairs, as well as two single bedrooms and the family bathroom

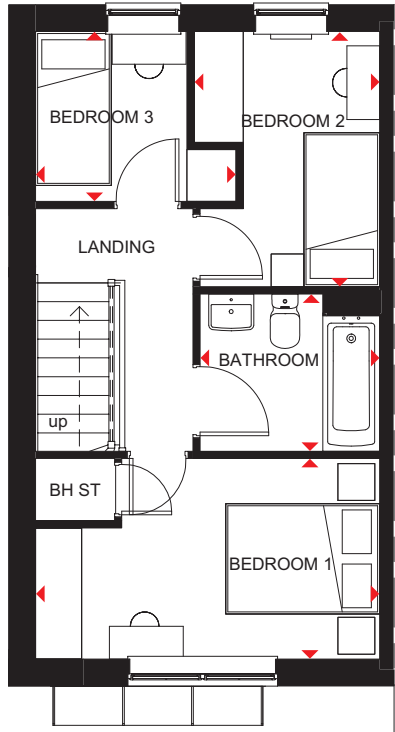


### Ground Floor

Lounge	3276 x 4917mm	10'9" x 16'2"
Kitchen/Dining	4201 x 2655mm	13'9" x 8'9"
WC	950 x 1601mm	3'1" x 5'3"

(Approximate dimensions)

\* Windows may be omitted on certain plots. Speak to Sales Adviser for details on individual plots.



### First Floor

Bedroom 1	4201 x 2449mm	13'9" x 8'0"
Bedroom 2	2265 x 3115mm	7'5" x 10'3"
Bedroom 3	2448 x 2075mm	8'0" x 6'10"
Bathroom	2193 x 1920mm	7'2" x 6'4"

(Approximate dimensions)

<b>KEY</b>	TIU	Biomass heat exchange unit	wm	Washing machine space	w	Wardrobe space
	ST	Store	f/f	Fridge/freezer space	◀▶	Dimension location
	BH ST	Bulkhead Store	dw	Dishwasher space		

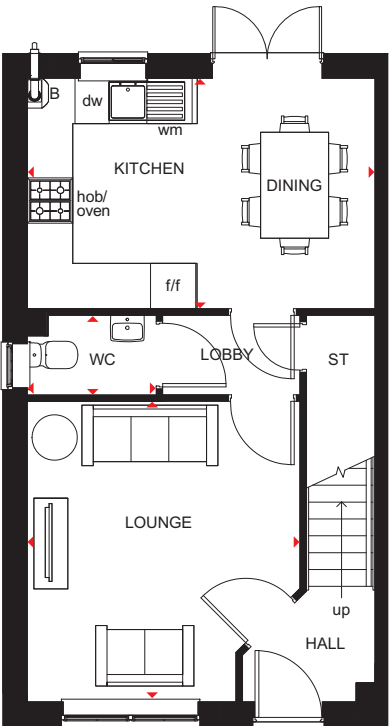


# ELLERTON

## 3 BEDROOM HOME



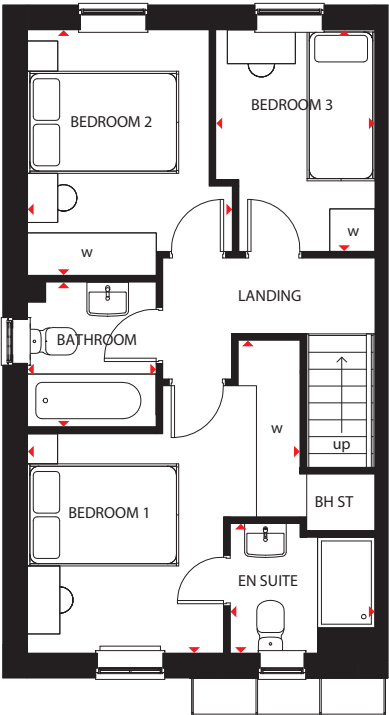
- Bright, practical home, ideal for modern family living
- Large, open-plan kitchen with ample dining space has French doors leading to the rear garden
- Good-sized lounge for all the family to relax in
- Upstairs, the main bedroom has an en suite shower room, and there is a further double bedroom, a single bedroom and a family bathroom



### Ground Floor

Lounge	3605 x 3972mm	11'10" x 13'0"
Kitchen/Dining	4598 x 3048mm	15'1" x 10'0"
WC	1703 x 1050mm	5'7" x 3'5"

(Approximate dimensions)



### First Floor

Bedroom 1	3605 x 4138mm	11'10" x 13'7"
En Suite	1918 x 1716mm	6'4" x 5'8"
Bedroom 2	2708 x 3250mm	8'11" x 10'8"
Bedroom 3	2109 x 2932mm	6'11" x 9'7"
Bathroom	1703 x 1917mm	5'7" x 6'3"

(Approximate dimensions)

KEY	B	Boiler	wm	Washing machine space	W	Wardrobe space
	ST	Store	f/f	Fridge/freezer space	◀▶	Dimension location
	BH ST	Bulkhead store	dw	Dishwasher space		

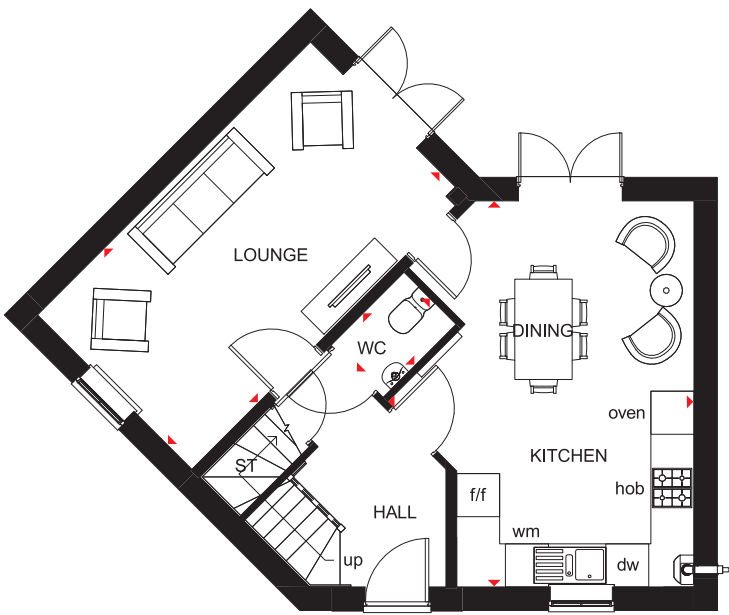


# LUTTERWORTH

## 3 BEDROOM HOME



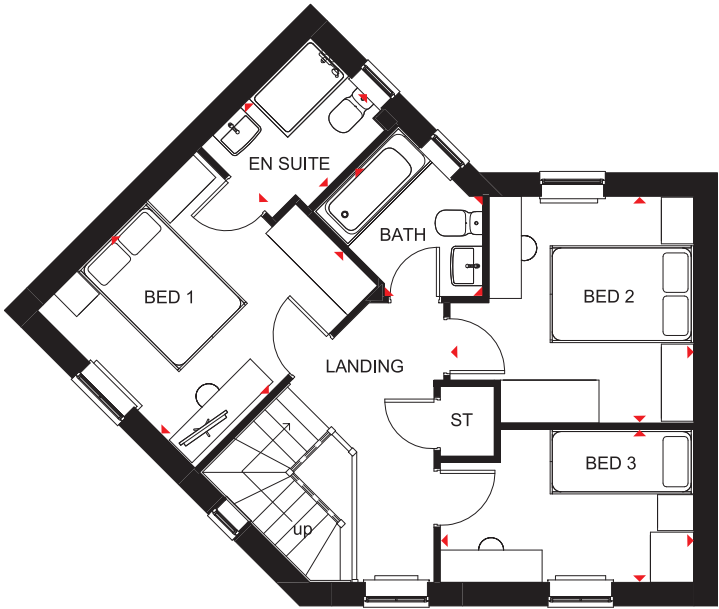
- Great use of a corner plot to create a spacious detached home
- Bright and flexible areas to enjoy modern-day living
- French doors open onto the rear garden from both the dual-aspect lounge and the open-plan kitchen with dining area
- Galleried landing leads to two double bedrooms – the main bedroom with en suite – a single bedroom and the family bathroom



### Ground Floor

Lounge	5385 x 3045mm	17'8" x 10'0"
Kitchen/Dining	4274 x 5385mm	14'0" x 17'8"
WC	1028 x 1441mm	3'4" x 4'9"

(Approximate dimensions)



### First Floor

Bedroom 1	3107 x 3599mm	10'2" x 11'10"
En Suite	1648 x 2159mm	5'5" x 7'1"
Bedroom 2	3404 x 3163mm	11'2" x 10'5"
Bedroom 3	3540 x 2134mm	11'7" x 7'0"
Bathroom	2519 x 1958mm	8'3" x 6'5"

(Approximate dimensions)

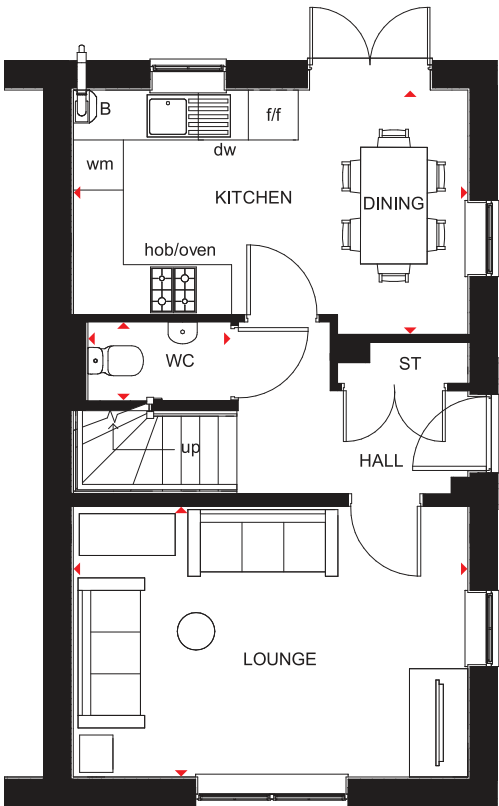
<b>KEY</b>	ST	Store	dw	Dishwasher space
	wm	Washing machine space	◀▶	Dimension location
	f/f	Fridge/freezer space		



3 BEDROOM HOME



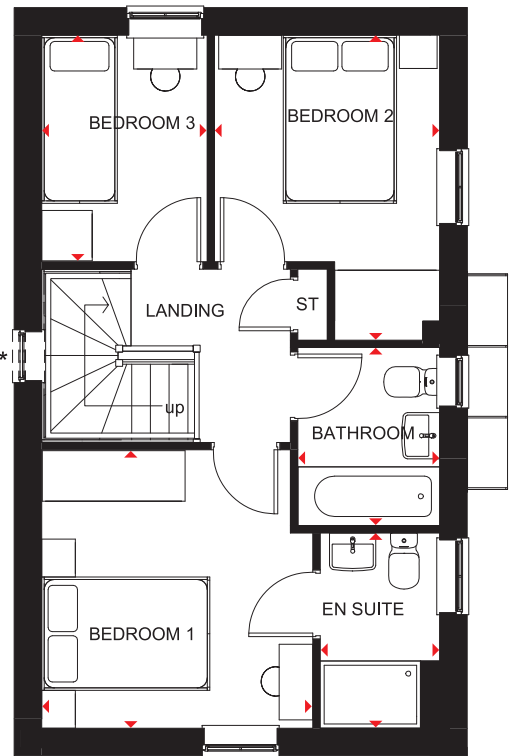
- A bright family home full of light and plenty of space
- The ground floor comprises a dual-aspect lounge and an open-plan kitchen with dining area opening onto the garden
- The first floor has two double bedrooms, the main with en suite, a single bedroom and family bathroom



Ground Floor

Lounge	4737 x 3250mm	15'6" x 10'8"
Kitchen/Dining	4737 x 2696mm	15'6" x 8'8"
WC	1891 x 945mm	6'2" x 3'1"

(Approximate dimensions)



First Floor

Bedroom 1	3226 x 3312mm	10'7" x 10'10"
En Suite	2322 x 1421mm	7'7" x 4'8"
Bedroom 2	2679 x 3628mm	8'9" x 11'11"
Bedroom 3	2696 x 1968mm	8'10" x 6'5"
Bathroom	2120 x 1688mm	6'11" x 5'6"

(Approximate dimensions)

\* Window may be omitted on certain plots. Speak to a Sales Adviser for details on individual plots.

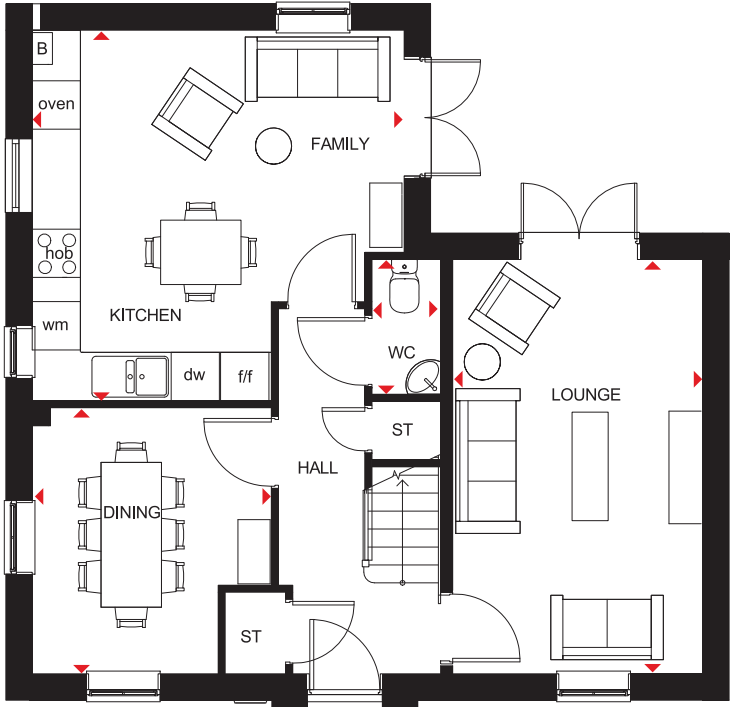
KEY	B	Boiler	f/f	Fridge/freezer space
	ST	Store	dw	Dishwasher space
	wm	Washing machine space	◀▶	Dimension location



4 BEDROOM DETACHED HOME



- A large fitted kitchen with family and breakfast areas provides this spacious home with the ideal hub for all the family
- French doors leading to the rear garden from both the kitchen and the separate lounge give it a bright and airy feeling, and there is a separate dining room with dual-aspect windows
- Upstairs are three double bedrooms, the main bedroom with en suite, a single bedroom and a family bathroom



Ground Floor

Lounge	5148 x 3110mm	16'11" x 10'2"
Kitchen/ Family Room	4623 x 4603mm	15'2" x 15'1"
Dining Room	3307 x 2972mm	10'10" x 9'9"
WC	1675 x 853mm	5'6" x 2'10"

(Approximate dimensions)



First Floor

Bedroom 1	4623 x 3104mm	15'2" x 10'2"
En Suite	2075 x 1191mm	6'10" x 3'11"
Bedroom 2	4523 x 3115mm	14'10" x 10'3"
Bedroom 3	3724 x 3115mm	12'3" x 10'3"
Bedroom 4	2275 x 2163mm	7'6" x 7'1"
Bathroom	2075 x 1697mm	6'10" x 5'7"

(Approximate dimensions)

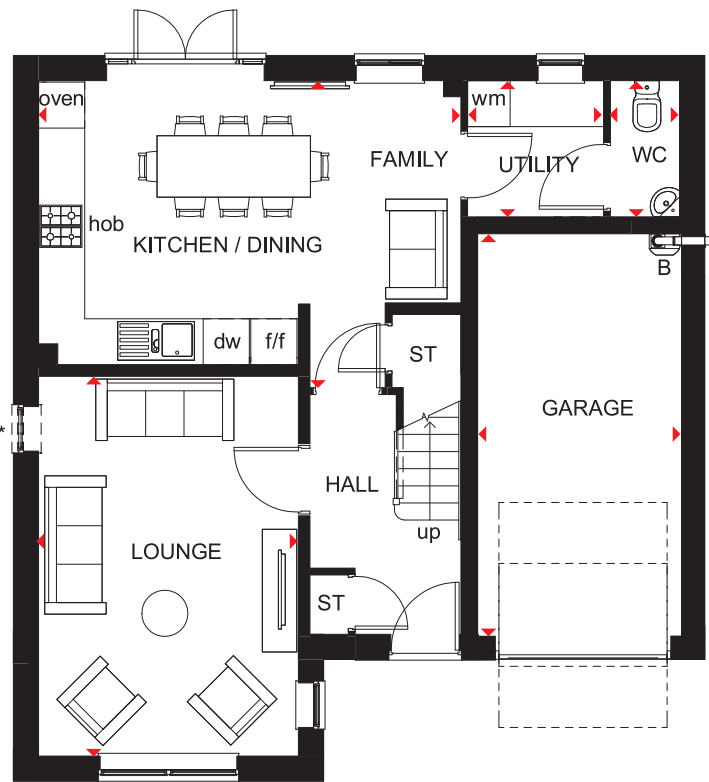
- KEY**
- |    |                       |     |                      |
|----|-----------------------|-----|----------------------|
| B  | Boiler                | f/f | Fridge/freezer space |
| ST | Store                 | dw  | Dishwasher space     |
| wm | Washing machine space | ◀▶  | Dimension location   |



4 BEDROOM DETACHED HOME



- A generously proportioned, bright and airy family home with integral garage
- The large open-plan kitchen has French doors leading to the rear garden from the dining and family areas; there is also a separate utility room
- The spacious lounge provides the perfect place for all the family to relax
- Upstairs there are four double bedrooms, the main bedroom with en suite, and a family bathroom

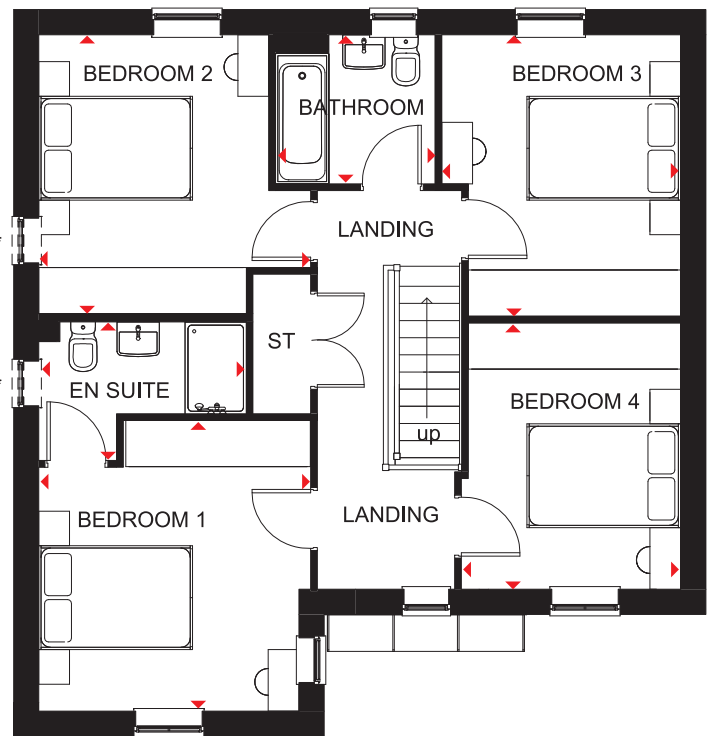


Ground Floor

Lounge	3385 x 4943mm	11'1" x 16'3"
Kitchen/Dining/Family	5501 x 4000mm	18'1" x 13'1"
WC	903 x 1776mm	3'0" x 5'10"
Utility	1771 x 1776mm	5'10" x 5'10"
Garage	5240 x 2655mm	17'2" x 8'9"

(Approximate dimensions)

\*Windows may be omitted on certain plots.  
Speak to a Sales Adviser for details on individual plots.



First Floor

Bedroom 1	3536 x 3780mm	11'7" x 12'5"
En Suite	2698 x 1801mm	8'10" x 5'11"
Bedroom 2	3627 x 3536mm	11'11" x 11'7"
Bedroom 3	3108 x 3660mm	10'2" x 12'0"
Bedroom 4	2853 x 3463mm	9'4" x 11'4"
Bathroom	2076 x 1939mm	6'10" x 6'4"

(Approximate dimensions)

\*Windows may be omitted on certain plots.  
Speak to a Sales Adviser for details on individual plots.

KEY	B	Boiler	f/f	Fridge/freezer space
	ST	Store	dw	Dishwasher space
	wm	Washing machine space	◀▶	Dimension location

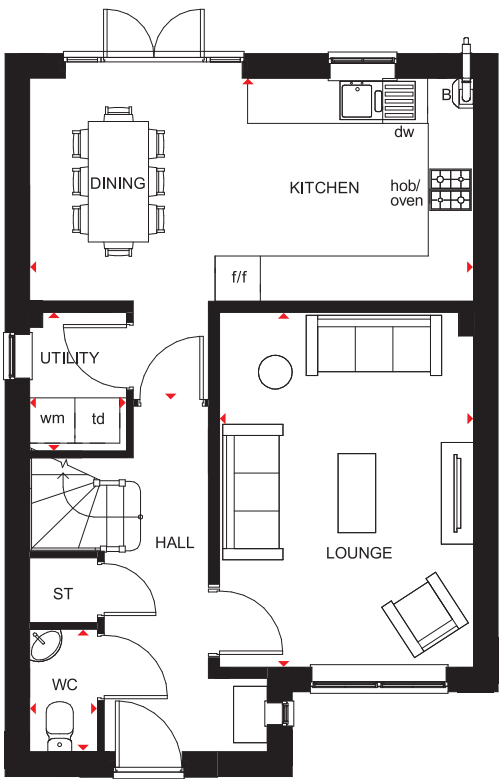


# KINGSLEY

## 4 BEDROOM DETACHED HOME



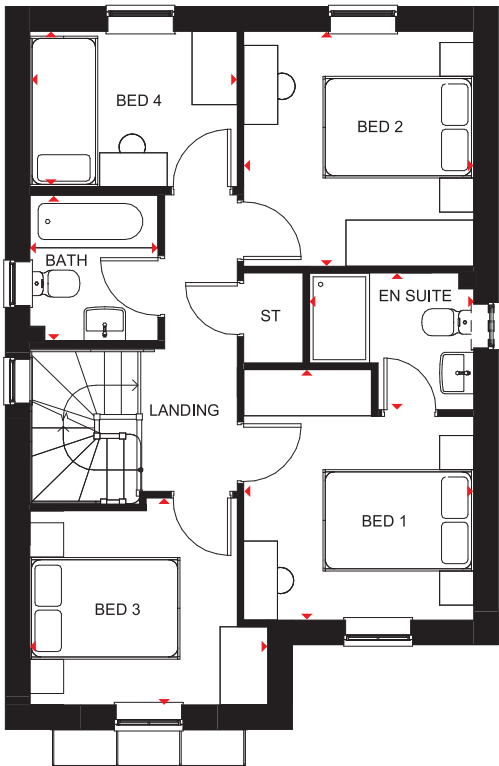
- Bright, airy family home with oversized windows to maximise light
- The large open-plan kitchen has a dining area with French doors leading to the garden. There is also a separate utility room
- The spacious lounge is just the place for the family to relax in
- Upstairs are three double bedrooms, the main bedroom with en suite, one single bedroom and a family bathroom



### Ground Floor

Lounge	3370 x 4710mm	11'1" x 15'5"
Kitchen/Dining	5895 x 4268mm	19'4" x 14'0"
WC	904 x 1627mm	3'0" x 5'4"
Utility	1287 x 1841mm	4'3" x 6'0"

(Approximate dimensions)



### First Floor

Bedroom 1	3054 x 3328mm	10'0" x 10'11"
En suite	2181 x 1816mm	7'2" x 5'11"
Bedroom 2	3054 x 3123mm	10'0" x 10'3"
Bedroom 3	3160 x 2747mm	10'4" x 9'0"
Bedroom 4	2754 x 2065mm	9'0" x 6'9"
Bathroom	1700 x 1937mm	5'7" x 6'4"

(Approximate dimensions)

<b>KEY</b>	B	Boiler	f/f	Fridge/freezer space	◀▶	Dimension location
	ST	Store	dw	Dishwasher space		
	wm	Washing machine space	td	Tumble dryer space		

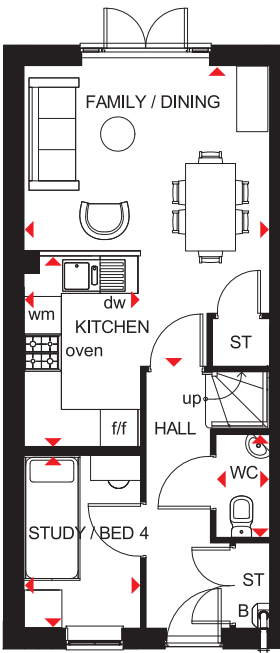


# KINGSVILLE

## 4 BEDROOM HOME



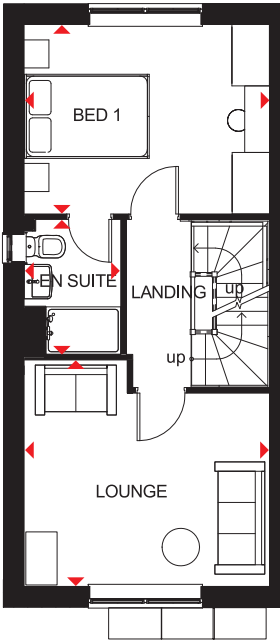
- An ideal family home designed over three floors
- A generous open-plan kitchen with dining and family areas, and a fourth bedroom/study are on the ground floor
- On the first floor oversized windows fill the lounge and main bedroom with light, giving them a bright and airy feeling, and the bedroom has an en suite
- The second floor offers a further double bedroom, a single bedroom and a family bathroom



### Ground Floor

Family/Dining	3936 x 4820mm	12'11" x 15'10"
Kitchen	1866 x 3060mm	6'1" x 10'0"
Study/Bed 4	1866 x 2749mm	6'1" x 9'0"
WC	861 x 1649mm	2'10" x 5'5"

(Approximate dimensions)

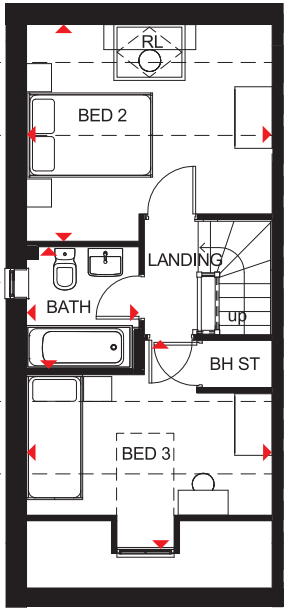


### First Floor

Lounge	3936 x 3630mm	12'11" x 11'11"
Bedroom 1	3936 x 3042mm	12'11" x 10'0"
En Suite	1551 x 2163mm	5'1" x 7'1"

(Approximate dimensions)

\* Window may be omitted on certain plots. Speak to a Sales Adviser for details on individual plots.



### Second Floor

Bedroom 2	3936 x 3508mm	12'11" x 11'6"
Bedroom 3	3936 x 3325mm	12'11" x 10'11"
Bathroom	1761 x 1963mm	5'9" x 6'5"

(Approximate dimensions)

\* Window may be omitted on certain plots. Speak to a Sales Adviser for details on individual plots.

\* Overall floor dimension includes lower ceiling areas.

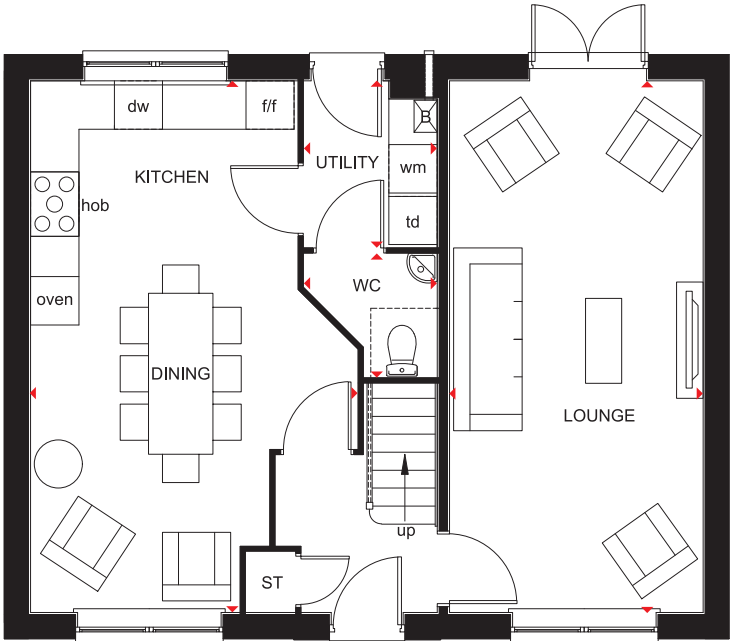
KEY	B	Boiler	wm	Washing machine space	RL	Roof light
	ST	Store	f/f	Fridge/freezer space	◀▶	Dimension location
	BH ST	Bulkhead Store	dw	Dishwasher space		



4 BEDROOM HOME



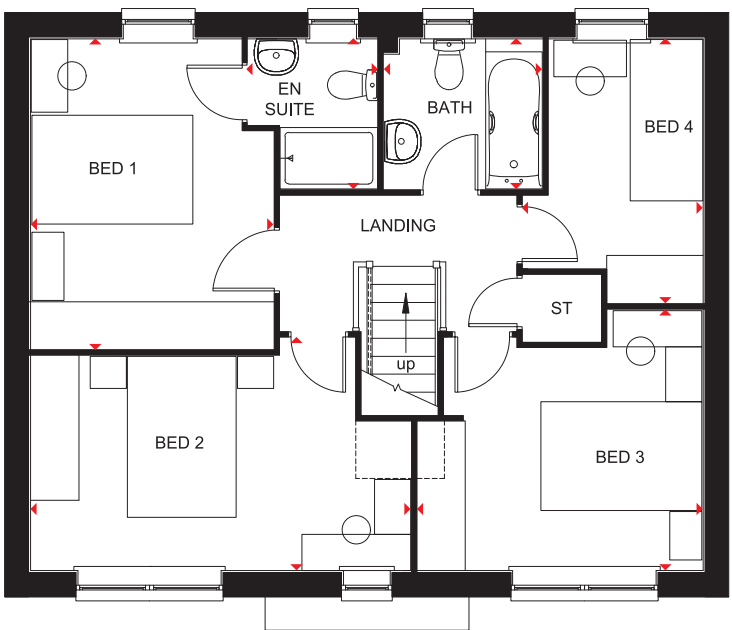
- Spacious family home designed for modern living
- Flexible, open-plan kitchen with dining and family areas, and a separate utility room
- Generous dual-aspect lounge with room for all the family to relax in has French doors to the rear garden, where living space can be easily extended in good weather
- Three double bedrooms, the main with en suite, are on the first floor along with a single bedroom and family bathroom



Ground Floor

Lounge	3150 x 6600mm	10'4" x 21'8"
Kitchen/Dining	4025 x 6600mm	13'2" x 21'8"
WC	1650 x 1524mm	5'5" x 5'0"
Utility	1650 x 2060mm	5'5" x 6'9"

(Approximate dimensions)



First Floor

Bedroom 1	3013 x 3850mm	9'11" x 12'8"
En Suite	1601 x 1863mm	5'3" x 6'1"
Bedroom 2	2887 x 4720mm	9'6" x 15'6"
Bedroom 3	3237 x 3542mm	10'7" x 11'7"
Bedroom 4	2236 x 3275mm	7'4" x 10'9"
Bathroom	1961 x 1863mm	6'5" x 6'1"

(Approximate dimensions)

KEY	B	Boiler	f/f	Fridge/freezer space	◀ ▶	Dimension location
	ST	Store	dw	Dishwasher space		
	wm	Washing machine space	td	Tumble dryer space		



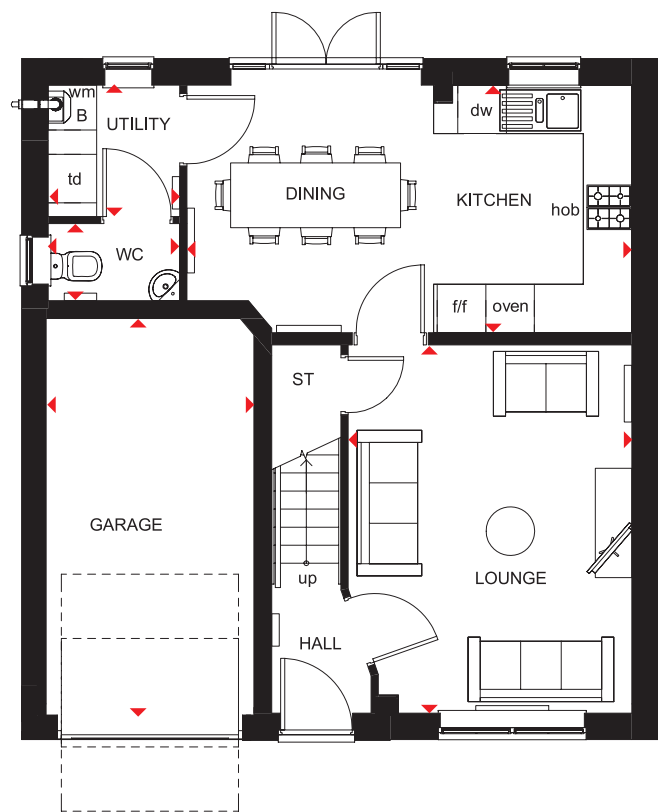
# WINDERMERE

THE CLASSIC  
COLLECTION

## 4 BEDROOM DETACHED HOME



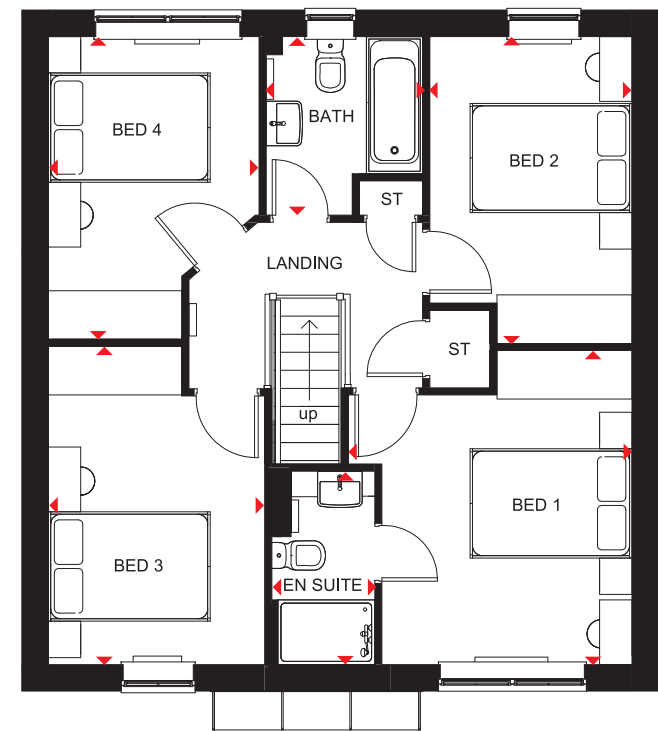
- Light flows into this bright, airy family home through oversized windows, giving a feeling of spaciousness
- The large open-plan kitchen is ideal for modern living with a dining area that has French doors leading to the garden, and a separate utility room
- A spacious lounge is the perfect place for all the family to relax in
- Upstairs are four double bedrooms, the main with en suite, and a family bathroom



### Ground Floor

Lounge	3506 x 4548mm	11'6" x 14'11"
Kitchen/Dining	5497 x 3060mm	18'0" x 10'0"
Utility	1627 x 1623mm	5'4" x 5'4"
WC	1627 x 952mm	5'4" x 3'1"
Garage	2568 x 4900mm	8'5" x 16'1"

(Approximate dimensions)



### First Floor

Bedroom 1	3506 x 3881mm	11'6" x 12'9"
En Suite	1272 x 2390mm	4'2" x 7'10"
Bedroom 2	2498 x 3791mm	8'2" x 12'5"
Bedroom 3	2675 x 3931mm	8'9" x 12'11"
Bedroom 4	2604 x 3739mm	8'7" x 12'3"
Bathroom	1934 x 2208mm	6'4" x 7'3"

(Approximate dimensions)

KEY	B	Boiler	f/f	Fridge/freezer space	◀▶	Dimension location
	ST	Store	dw	Dishwasher space		
	wm	Washing machine space	td	Tumble dryer space		

barratthomes.co.uk



IMPORTANT NOTICE: [Computer Generated] Images are for illustrative purposes only. Individual features such as windows, brick and other materials' colours may vary, as may heating and electrical layouts. Floor plans are intended to give a general indication of the proposed floor layout only. The dimensions are accurate to within +or- 50mm. Dimensions should not be used for carpet sizes, appliance spaces or items of furniture. Please ask our sales adviser for details of the treatments specified for individual plots. [Computer Generated] Images and dimensions are not intended to form part of any contract or warranty. Furniture and landscaping is shown for illustrative purposes only.



[www.barratthomes.co.uk](http://www.barratthomes.co.uk)

Contact the development on 0333 3558 474