



GALLOWAY GRANGE

CHELFORD



GALLOWAY GRANGE  
CHELFORD

Dixon Drive, Chelford, Macclesfield SK11 9AX

- The Wilford**  
2 bedroom home
- The Archford**  
3 bedroom home
- The Hadley**  
3 bedroom home
- The Kennett**  
3 bedroom home
- The Meriden**  
4 bedroom home
- The Hertford**  
4 bedroom home
- The Bradgate**  
4 bedroom home
- The Holden**  
4 bedroom home
- The Winstone**  
4 bedroom home
- The Shelbourne**  
4 bedroom home
- The Mitchell**  
4 bedroom home
- The Bayswater**  
4 bedroom home

**AFFORDABLE HOMES**

- The Stevenson**  
2 bedroom apartments
- The Chichester**  
2 bedroom apartments
- The Archford**  
3 bedroom home
- SH52**  
3 bedroom home

★ Marketing Suite & Show Homes

Ground floor allocated for commercial development



dwh.co.uk



DAVID WILSON HOMES  
WHERE QUALITY LIVES

Development layouts and landscaping are not intended to form part of any contract or warranty unless specifically incorporated in writing into the contract. Images and development layouts are for illustrative purposes and should be used for general guidance only. Development layouts including parking arrangements, affordable housing, commercial buildings/space, retail buildings/space, play areas and public open spaces may change to reflect changes in planning permission and are not intended to form part of any contract or warranty unless specifically incorporated in writing. Please speak to your solicitor to whom full details of any planning consents including layout plans will be available. Galloway Grange is a marketing name only and may not be the designated postal address, which may be determined by The Post Office. SP386804

# THE MITCHELL

FOUR BEDROOM DETACHED HOME



Individual plots may vary, please speak to the Sales Adviser



Designed for convenience and easy modern living, The Mitchell is a spacious family home. Attractive French doors access the rear garden from both the dining area of the open-plan kitchen/family room and the generous lounge, where a

large bay window also adds to the bright and airy feeling. A practical utility room leads off the kitchen. Upstairs are three double bedrooms – the master with en suite – a single bedroom and the family bathroom, complete with separate shower.



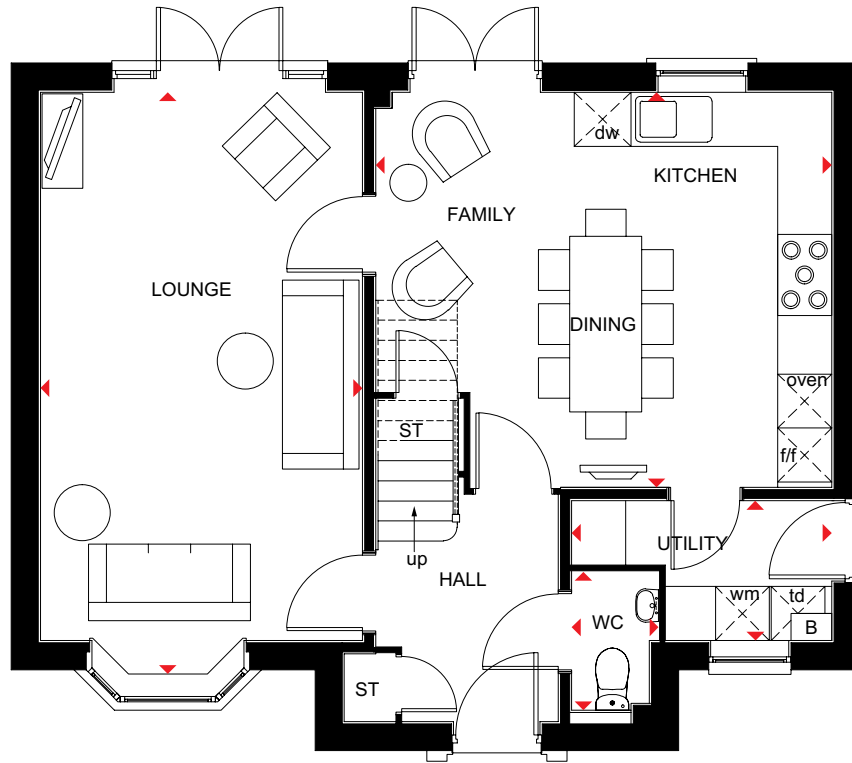
DAVID WILSON HOMES  
WHERE QUALITY LIVES

# THE MITCHELL

FOUR BEDROOM DETACHED HOME

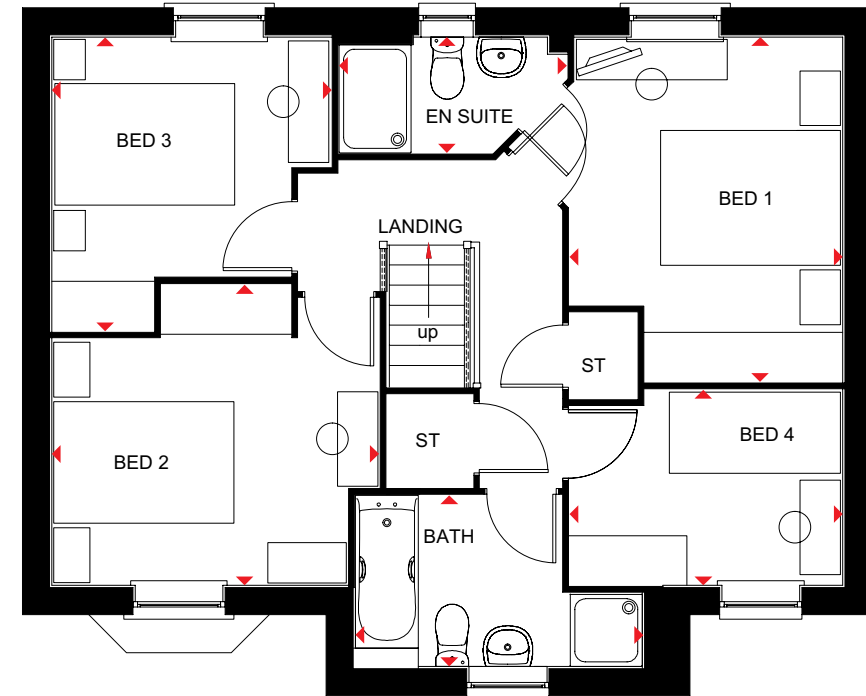
## Key

B	Boiler	wm	Washing machine space	◀▶	Dimension location
ST	Store	dw	Dishwasher space		
f/f	Fridge/freezer space	td	Tumble dryer space		



### Ground Floor

Lounge	3575 x 6487 mm	11'8" x 21'3"
Kitchen/Family/Dining	5065 x 4388 mm	16'7" x 14'4"
Utility	1552 x 2888 mm	5'1" x 9'6"
WC	1538 x 963 mm	5'0" x 3'2"



### First Floor

Bedroom 1	3831 x 3035 mm	12'7" x 9'11"
En suite	1285 x 2529 mm	4'3" x 8'3"
Bedroom 2	3337 x 3636 mm	10'11" x 11'11"
Bedroom 3	3265 x 3105 mm	10'8" x 10'2"
Bedroom 4	3035 x 2170 mm	9'11" x 7'1"
Bathroom	3199 x 1900 mm	10'6" x 6'3"

We are on the New Homes Quality Code register of registered developers. "We" refers to the Barratt Developments PLC group brands including Barratt London, Barratt Homes and David Wilson Homes. All images used are for illustrative purposes. These and the dimensions given are illustrative for this house type and individual properties may differ. Please check with your Sales Adviser in respect of individual properties. We give maximum dimensions within each room which includes areas of fixtures and fittings including fitted furniture. These dimensions should not be used for carpet or flooring sizes, appliance spaces or items of furniture. All images, photographs and dimensions are not intended to be relied upon for, nor to form part of, any contract unless specifically incorporated in writing into the contract.

H452---7DS00/SP347856

dwh.co.uk



DAVID WILSON HOMES  
WHERE QUALITY LIVES

# THE HERTFORD

FOUR BEDROOM DETACHED HOME



Individual plots may vary, please speak to the Sales Adviser



Designed over three floors, The Hertford is a spacious family home. A large open-plan dining area and kitchen – with separate utility – and a beautiful glazed walk-in bay with French doors leading to the garden, provide an abundance of flexible living space. Attractive bay windows in the dining area and the dual-

aspect lounge ensure this home offers a bright welcome. Two double bedrooms, the spacious master with en suite and dressing area, and the family bathroom are on the first floor. Upstairs are a further double bedroom, a single bedroom and a shower room.



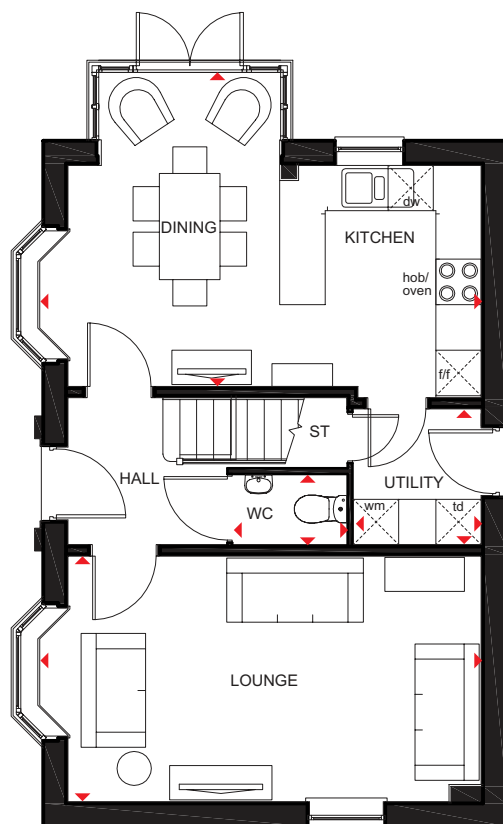
DAVID WILSON HOMES  
WHERE QUALITY LIVES

# THE HERTFORD

FOUR BEDROOM DETACHED HOME

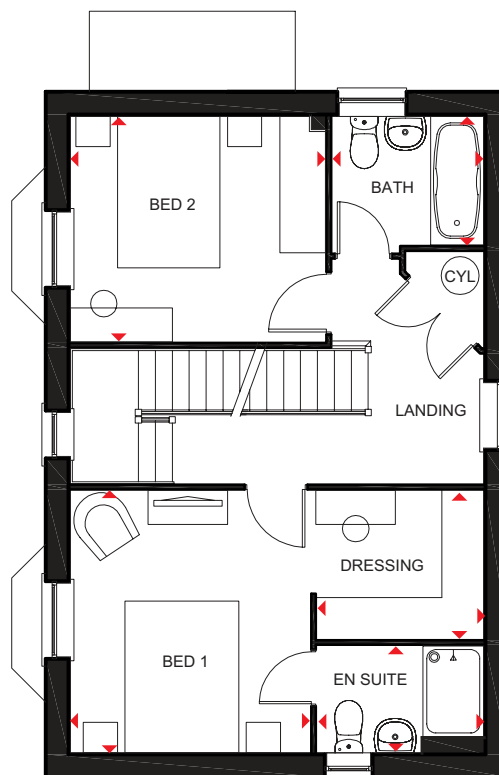
## Key

ST	Store	wm	Washing machine space	◀▶	Dimension location
CYL	Cylinder	dw	Dishwasher space		
f/f	Fridge/freezer space	td	Tumble dryer space		



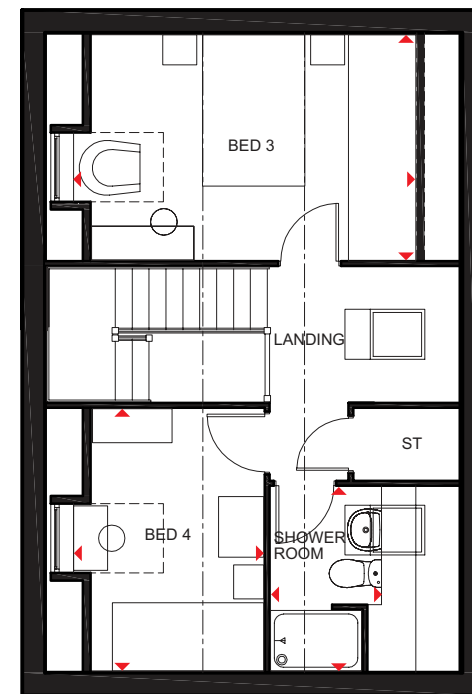
### Ground Floor

Lounge	5852 x 3242 mm	19'2" x 10'7"
Kitchen/Dining	5852 x 4142 mm	19'2" x 13'7"
Utility	1688 x 1791 mm	5'6" x 5'10"
WC	1500 x 920 mm	4'11" x 3'0"



### First Floor

Bed 1	3462 x 3166 mm	11'4" x 10'4"
En suite	2200 x 1410 mm	7'2" x 4'7"
Dressing	2200 x 1963 mm	7'2" x 6'5"
Bed 2	3366 x 2978 mm	11'0" x 9'9"
Bath	2000 x 1700 mm	6'6" x 5'6"



### Second Floor

Bed 3	4540* x 2978 mm	14'10"* x 9'9"
Bed 4	3462 x 2537* mm	11'4" x 8'3"*
Shower room	2432 x 1464* mm	7'11" x 4'9"*

\*Overall floor dimension includes lowered ceiling areas

We are on the New Homes Quality Code register of registered developers. "We" refers to the Barratt Developments PLC group brands including Barratt London, Barratt Homes and David Wilson Homes. All images used are for illustrative purposes. These and the dimensions given are illustrative for this house type and individual properties may differ. Please check with your Sales Adviser in respect of individual properties. We give maximum dimensions within each room which includes areas of fixtures and fittings including fitted furniture. These dimensions should not be used for carpet or flooring sizes, appliance spaces or items of furniture. All images, photographs and dimensions are not intended to be relied upon for, nor to form part of, any contract unless specifically incorporated in writing into the contract.

H470---7DS00 / SP 341684

dwh.co.uk



DAVID WILSON HOMES  
WHERE QUALITY LIVES

# THE BAYSWATER

FOUR BEDROOM DETACHED HOME



Individual plots may vary, please speak to the Sales Adviser



The Bayswater is beautifully designed over three floors with an intelligent use of space applied. The expansive open-plan kitchen with dining and family areas has French doors leading to the rear garden. The lounge, with an attractive

bay window, is perfect for all the family to relax in. On the first floor are two double bedrooms, a twin bedroom and the family bathroom. The spacious master bedroom, with en suite and dressing area, takes up the entire second floor.



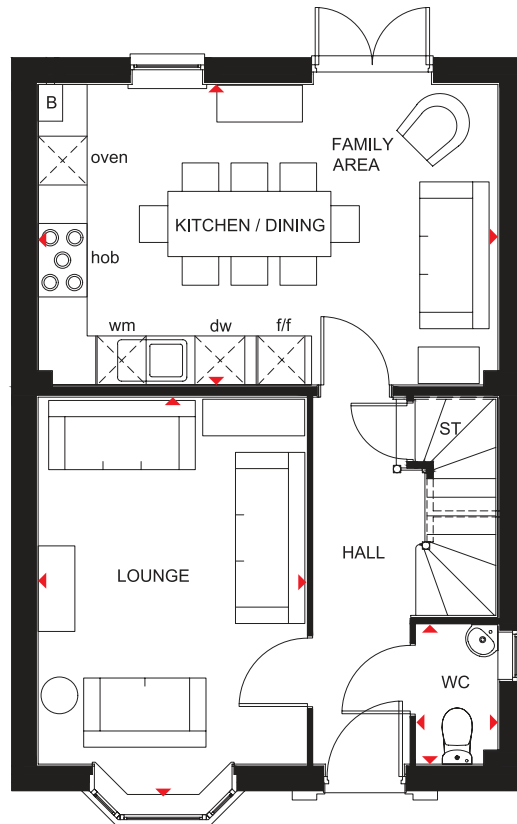
DAVID WILSON HOMES  
WHERE QUALITY LIVES

# THE BAYSWATER

FOUR BEDROOM DETACHED HOME

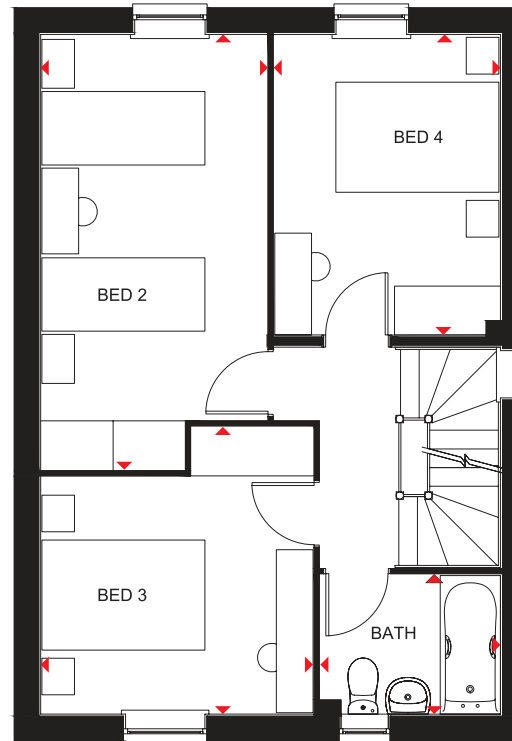
## Key

B	Boiler	wm	Washing machine space	◀▶	Dimension location
ST	Store	dw	Dishwasher space		
f/f	Fridge/freezer space	RL	Roof light		



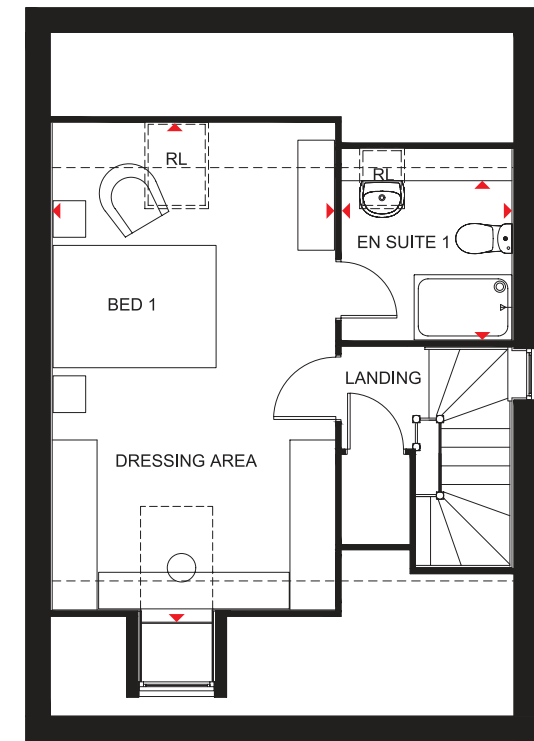
### Ground Floor

Lounge	4900 x 3290 mm	16'1" x 10'10"
Kitchen/Family/Dining	5640 x 3687 mm	18'6" x 12'1"
WC	1712 x 1000 mm	5'7" x 3'3"



### First Floor

Bedroom 2	2773 x 5341 mm	9'1" x 17'6"
Bedroom 3	3341 x 3525 mm	11'0" x 11'7"
Bedroom 4	2776 x 3688 mm	9'1" x 12'1"
Bathroom	2210 x 1712 mm	7'3" x 5'7"



### Second Floor

Bedroom 1/Dressing Area	6120* x 3463 mm	20'1" x 11'4"
En suite	2085 x 1954* mm	6'10" x 6'5"*

\*Overall floor dimension includes lowered ceiling areas

We are on the New Homes Quality Code register of registered developers. "We" refers to the Barratt Developments PLC group brands including Barratt London, Barratt Homes and David Wilson Homes. All images used are for illustrative purposes. These and the dimensions given are illustrative for this house type and individual properties may differ. Please check with your Sales Adviser in respect of individual properties. We give maximum dimensions within each room which includes areas of fixtures and fittings including fitted furniture. These dimensions should not be used for carpet or flooring sizes, appliance spaces or items of furniture. All images, photographs and dimensions are not intended to be relied upon for, nor to form part of, any contract unless specifically incorporated in writing into the contract.

H406---7 DS02/SP394962

dwh.co.uk



DAVID WILSON HOMES  
WHERE QUALITY LIVES

# THE ARCHFORD

THREE BEDROOM TERRACED HOME



Individual plots may vary, please speak to the Sales Adviser



A bright family home, The Archford has a stylish open-plan kitchen and dining area, with French doors opening out onto the rear garden – creating the option for even more living space in good weather. A lobby separates the

kitchen and the spacious lounge, with stairs leading to the first floor. Here, the master bedroom has its own en suite. This attractive mid-terraced home is completed by a further double bedroom, a single bedroom and a family bathroom.



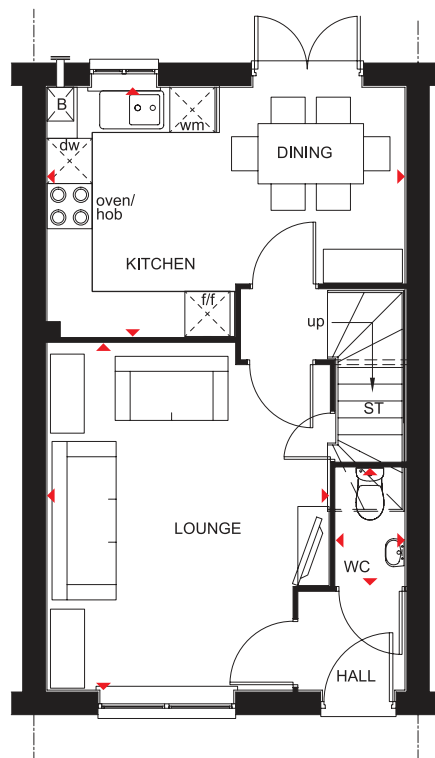
DAVID WILSON HOMES  
WHERE QUALITY LIVES

# THE ARCHFORD

THREE BEDROOM TERRACED HOME

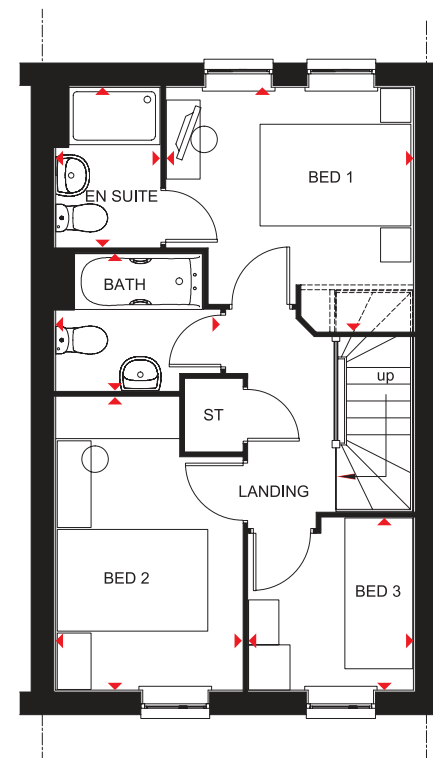
## Key

B	Boiler	wm	Washing machine space
ST	Store	dw	Dishwasher space
f/f	Fridge/freezer space	◀▶	Dimension location



### Ground Floor

Lounge	4604 x 3746 mm	15'1" x 12'3"
Kitchen/Dining	4750 x 3310 mm	15'7" x 10'10"
WC	1561 x 915 mm	5'1" x 3'0"



### First Floor

Bed 1	3235 x 3276 mm	10'7" x 10'9"
En suite	1385 x 2119 mm	4'7" x 6'11"
Bed 2	2475 x 3891 mm	8'1" x 12'9"
Bed 3	2286 x 2186 mm	7'6" x 7'2"
Bath	1815 x 2181 mm	5'11" x 7'2"

We are on the New Homes Quality Code register of registered developers. "We" refers to the Barratt Developments PLC group brands including Barratt London, Barratt Homes and David Wilson Homes. All images used are for illustrative purposes. These and the dimensions given are illustrative for this house type and individual properties may differ. Please check with your Sales Adviser in respect of individual properties. We give maximum dimensions within each room which includes areas of fixtures and fittings including fitted furniture. These dimensions should not be used for carpet or flooring sizes, appliance spaces or items of furniture. All images, photographs and dimensions are not intended to be relied upon for, nor to form part of, any contract unless specifically incorporated in writing into the contract.

DWH 2017 P382-I-7DS00 / SP342658

dwh.co.uk



DAVID WILSON HOMES  
WHERE QUALITY LIVES

# THE KENNETT

THREE BEDROOM MID-TERRACED HOME



Individual plots may vary, please speak to the Sales Adviser



Thoughtfully designed over three floors, The Kennett is a good-sized terraced family home, ideal for flexible modern living. The bright, open-plan kitchen on the ground floor incorporates a dining area opening out onto the rear garden.

A lobby separating the kitchen from the spacious bay-fronted lounge leads upstairs. Here are two double bedrooms, the family bathroom and access to the second floor, which is entirely occupied by a spacious master bedroom with en suite.



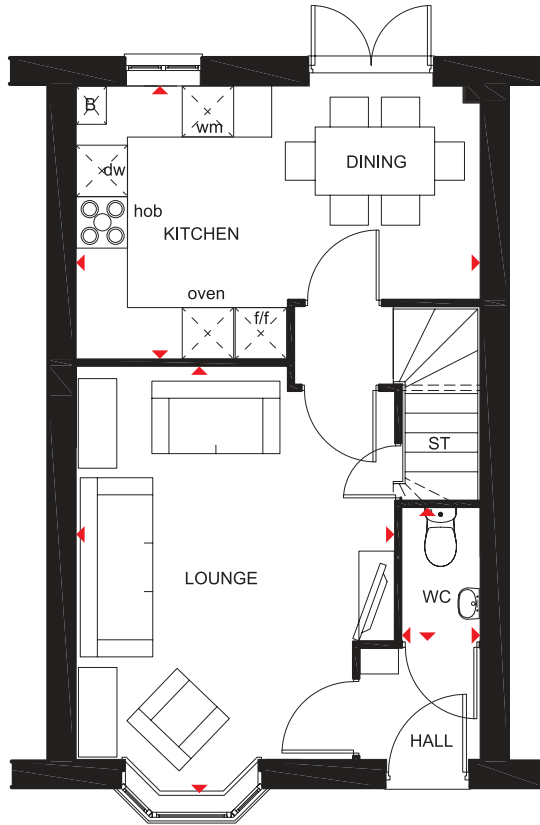
DAVID WILSON HOMES  
WHERE QUALITY LIVES

# THE KENNETT

THREE BEDROOM MID-TERRACED HOME

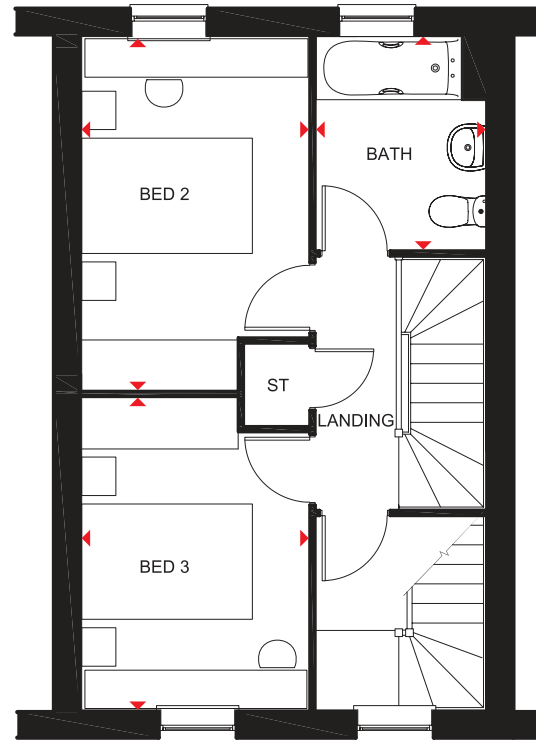
## Key

B	Boiler	f/f	Fridge/freezer space	dw	Dishwasher space
ST	Store	wm	Washing machine space	◀▶	Dimension location



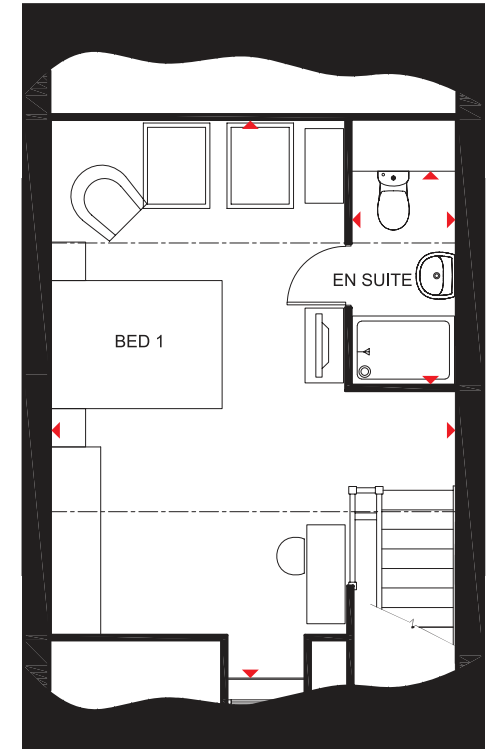
### Ground Floor

Lounge	5001 x 3729 mm	16'4" x 12'2"
Kitchen/Dining	4733 x 3197 mm	15'6" x 10'5"
WC	1561 x 915 mm	5'1" x 3'0"



### First Floor

Bed 2	4116 x 2659 mm	13'6" x 8'8"
Bed 3	3658 x 2659 mm	12'0" x 8'8"
Bath	2498 x 1985 mm	8'2" x 6'6"



### Second Floor

Bed 1	6531 x 4733* mm	21'5" x 15'6"*
En Suite	1210 x 2497* mm	3'11" x 8'2"*

\*Overall floor dimension includes lowered ceiling areas

We are on the New Homes Quality Code register of registered developers. "We" refers to the Barratt Developments PLC group brands including Barratt London, Barratt Homes and David Wilson Homes. All images used are for illustrative purposes. These and the dimensions given are illustrative for this house type and individual properties may differ. Please check with your Sales Adviser in respect of individual properties. We give maximum dimensions within each room which includes areas of fixtures and fittings including fitted furniture. These dimensions should not be used for carpet or flooring sizes, appliance spaces or items of furniture. All images, photographs and dimensions are not intended to be relied upon for, nor to form part of, any contract unless specifically incorporated in writing into the contract.

T310-I-7DS01 / SP342557

dwh.co.uk



DAVID WILSON HOMES  
WHERE QUALITY LIVES

# THE HADLEY

THREE BEDROOM DETACHED HOME



Individual plots may vary, please speak to the Sales Adviser



The sash-style windows give this detached home a delightfully traditional look. Yet inside, the open-plan kitchen – with its dining and family areas and separate utility room – is designed very much for busy, modern living. French doors to the garden

give the whole room a bright and airy feeling. The spacious dual-aspect lounge meanwhile provides the perfect place to relax. Upstairs are two double bedrooms, the large master with en suite, a single bedroom and a family bathroom.



DAVID WILSON HOMES

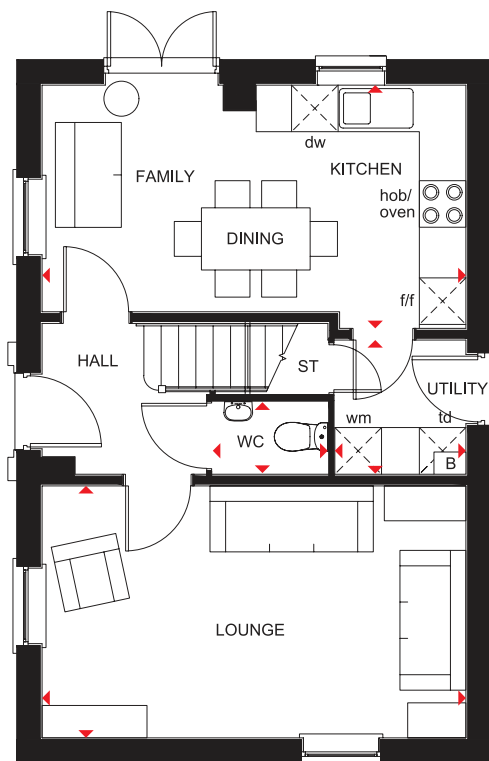
WHERE QUALITY LIVES

# THE HADLEY

THREE BEDROOM DETACHED HOME

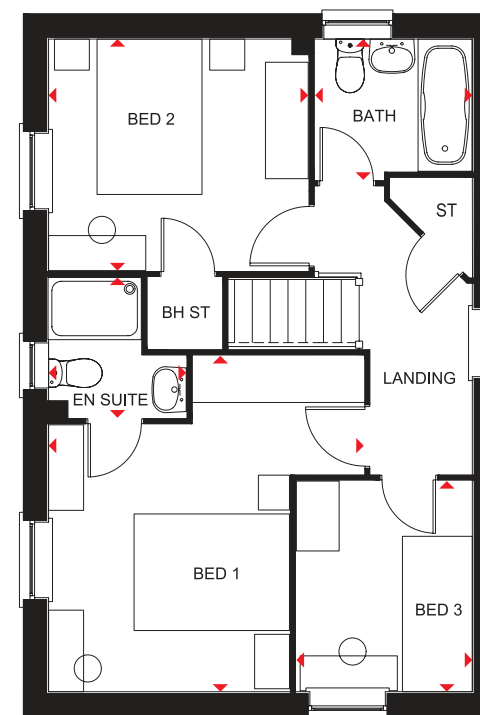
## Key

B	Boiler	f/f	Fridge/freezer space	td	Tumble dryer space
ST	Store	wm	Washing machine space	◀▶	Dimension location
BH ST	Bulkhead Store	dw	Dishwasher space		



### Ground Floor

Lounge	5455 x 3242 mm	17'11" x 10'8"
Kitchen/Family/ Dining	5455 x 3131 mm	17'11" x 10'3"
Utility	1727 x 1688 mm	5'8" x 5'6"
WC	1484 x 932 mm	4'10" x 3'1"



### First Floor

Bedroom 1	4324 x 4058 mm	14'2" x 13'3"
En Suite	1806 x 1771 mm	5'11" x 5'9"
Bedroom 2	3341 x 2978 mm	11'3" x 9'9"
Bedroom 3	2713 x 2265 mm	8'11" x 7'5"
Bathroom	2025 x 1811 mm	6'8" x 6'0"

We are on the New Homes Quality Code register of registered developers. "We" refers to the Barratt Developments PLC group brands including Barratt London, Barratt Homes and David Wilson Homes. All images used are for illustrative purposes. These and the dimensions given are illustrative for this house type and individual properties may differ. Please check with your Sales Adviser in respect of individual properties. We give maximum dimensions within each room which includes areas of fixtures and fittings including fitted furniture. These dimensions should not be used for carpet or flooring sizes, appliance spaces or items of furniture. All images, photographs and dimensions are not intended to be relied upon for, nor to form part of, any contract unless specifically incorporated in writing into the contract.

P341--D7 DS02/SP394974

dwh.co.uk



DAVID WILSON HOMES  
WHERE QUALITY LIVES

# THE MERIDEN

FOUR BEDROOM HOME



Individual plots may vary, please speak to the Sales Adviser



The Meriden is a bright place to call home with its attractive bay-fronted lounge and a light-filled glazed bay in the kitchen/dining area leading to the garden. A family space in the kitchen increases flexibility for

living and entertaining, while a separate utility room adds practicality and an integral garage provides extra security. Upstairs are four double bedrooms, the generous master with en suite, and a family bathroom with shower.



DAVID WILSON HOMES  
WHERE QUALITY LIVES

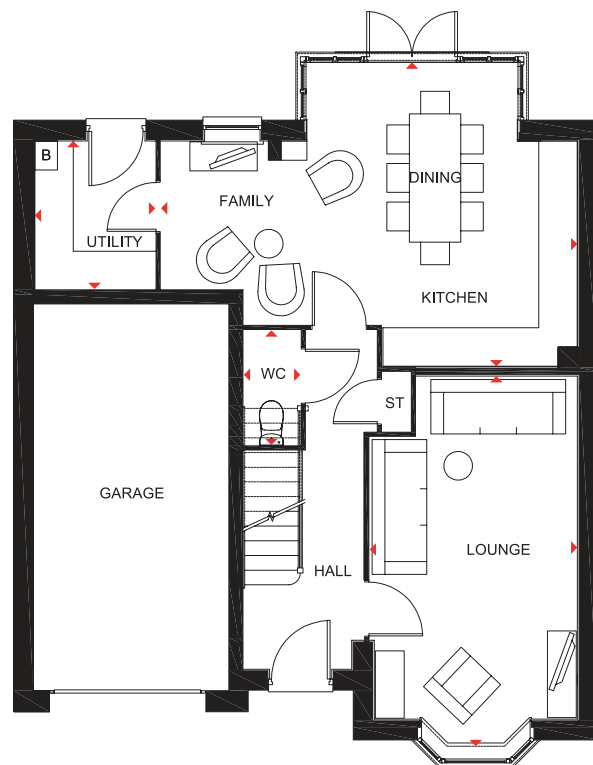
# THE MERIDEN

FOUR BEDROOM HOME

## Key

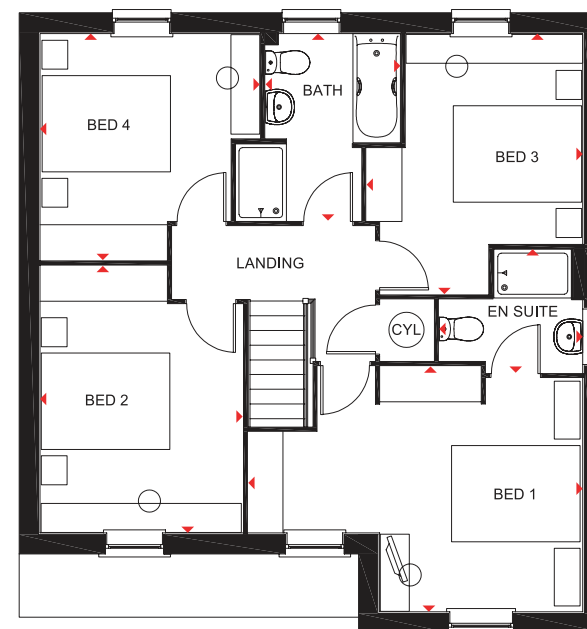
B Boiler  
ST Store

CYL Cylinder  
◀▶ Dimension location



### Ground Floor

Lounge	5767 x 3235 mm	18'11" x 10'7"
Kitchen/Family/ Dining	6486 x 4735 mm	21'3" x 15'6"
Utility	2305 x 1877 mm	7'7" x 6'2"
WC	1786 x 882 mm	5'10" x 2'11"



### First Floor

Bedroom 1	5208 x 3822 mm	17'1" x 12'6"
En Suite	2235 x 1923 mm	7'4" x 6'4"
Bedroom 2	4161 x 3155 mm	13'8" x 10'4"
Bedroom 3	4056 x 3365 mm	13'3" x 11'0"
Bedroom 4	3527 x 3423 mm	11'7" x 11'3"
Bathroom	2913 x 2100 mm	9'6" x 6'11"

We are on the New Homes Quality Code register of registered developers. "We" refers to the Barratt Developments PLC group brands including Barratt London, Barratt Homes and David Wilson Homes. All images used are for illustrative purposes. These and the dimensions given are illustrative for this house type and individual properties may differ. Please check with your Sales Adviser in respect of individual properties. We give maximum dimensions within each room which includes areas of fixtures and fittings including fitted furniture. These dimensions should not be used for carpet or flooring sizes, appliance spaces or items of furniture. All images, photographs and dimensions are not intended to be relied upon for, nor to form part of, any contract unless specifically incorporated in writing into the contract.

375034

dwh.co.uk



DAVID WILSON HOMES  
WHERE QUALITY LIVES

# THE HOLDEN

FOUR BEDROOM DETACHED HOME



Individual plots may vary, please speak to the Sales Adviser



Sash-style windows give The Holden a charming, traditional look, yet inside it is designed very much for modern family living. A beautiful glazed bay leading to the garden makes the open-plan kitchen, family and dining areas exceptionally bright and

airy. A separate utility room also has access to the garden, while a large bay-fronted lounge and a separate study provide room to relax and work. Upstairs are four double bedrooms, the master with en suite, and a family bathroom with shower.



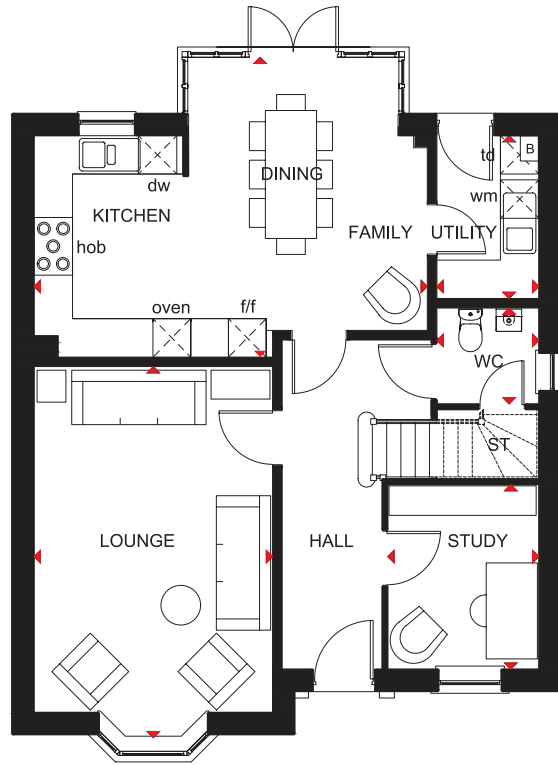
DAVID WILSON HOMES  
WHERE QUALITY LIVES

# THE HOLDEN

FOUR BEDROOM DETACHED HOME

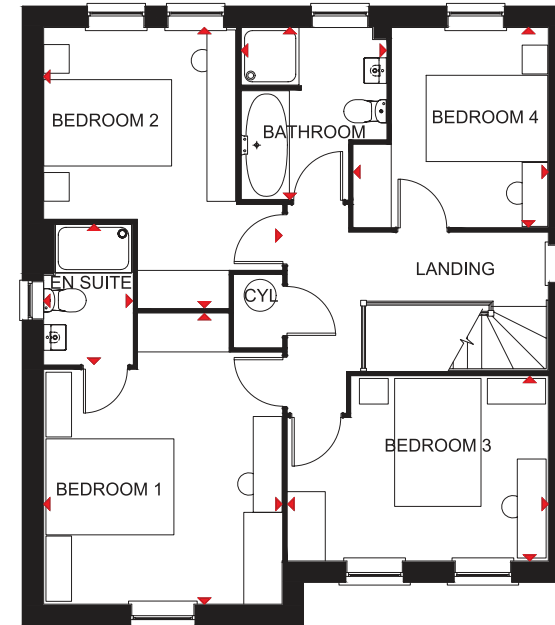
## Key

B	Boiler	f/f	Fridge/freezer space	td	Tumble dryer space
ST	Store	wm	Washing machine space	◀▶	Dimension location
CYL	Cylinder	dw	Dishwasher space		



### Ground Floor

Lounge	5802 x 3728 mm	19'0" x 12'3"
Kitchen/Family/Dining	6147 x 4685 mm	20'2" x 15'4"
Study	2886 x 2361 mm	9'6" x 7'9"
Utility	2545 x 1593 mm	8'4" x 5'3"
WC	1498 x 1593 mm	4'11" x 5'3"



### First Floor

Bedroom 1	4543 x 3728 mm	14'11" x 12'3"
En suite	2190 x 1390 mm	7'2" x 4'7"
Bedroom 2	4384 x 3728 mm	14'4" x 12'3"
Bedroom 3	4073 x 2886 mm	13'4" x 9'5"
Bedroom 4	3120 x 3043 mm	10'3" x 10'0"
Bathroom	2689 x 2266 mm	8'10" x 7'5"

We are on the New Homes Quality Code register of registered developers. "We" refers to the Barratt Developments PLC group brands including Barratt London, Barratt Homes and David Wilson Homes. All images used are for illustrative purposes. These and the dimensions given are illustrative for this house type and individual properties may differ. Please check with your Sales Adviser in respect of individual properties. We give maximum dimensions within each room which includes areas of fixtures and fittings including fitted furniture. These dimensions should not be used for carpet or flooring sizes, appliance spaces or items of furniture. All images, photographs and dimensions are not intended to be relied upon for, nor to form part of, any contract unless specifically incorporated in writing into the contract.

H469-H7 DS03/SP416921

dwh.co.uk



DAVID WILSON HOMES  
WHERE QUALITY LIVES

# THE SHELBOURNE

FOUR BEDROOM DETACHED HOME



Individual plots may vary, please speak to the Sales Adviser



This stylishly designed home boasts a beautiful ground floor, featuring an airy kitchen with breakfast and large separate utility room and French doors leading to the rear garden. A separate dining room with its own set of French doors and a

comfortable bay-fronted lounge are also presented downstairs. With just as much attention to detail, the first floor hosts four double bedrooms; the master with dressing area and full en suite, and a family bathroom with separate shower.



DAVID WILSON HOMES

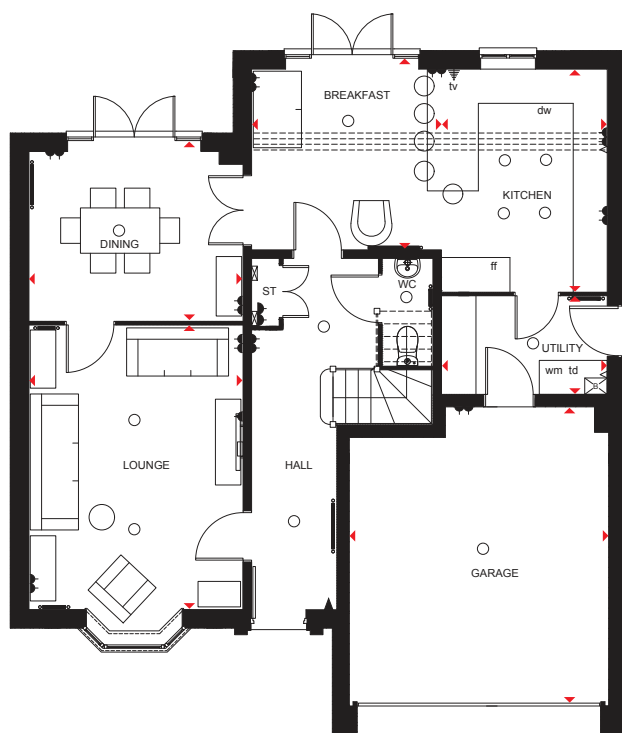
WHERE QUALITY LIVES

# THE SHELBOURNE

FOUR BEDROOM DETACHED HOME

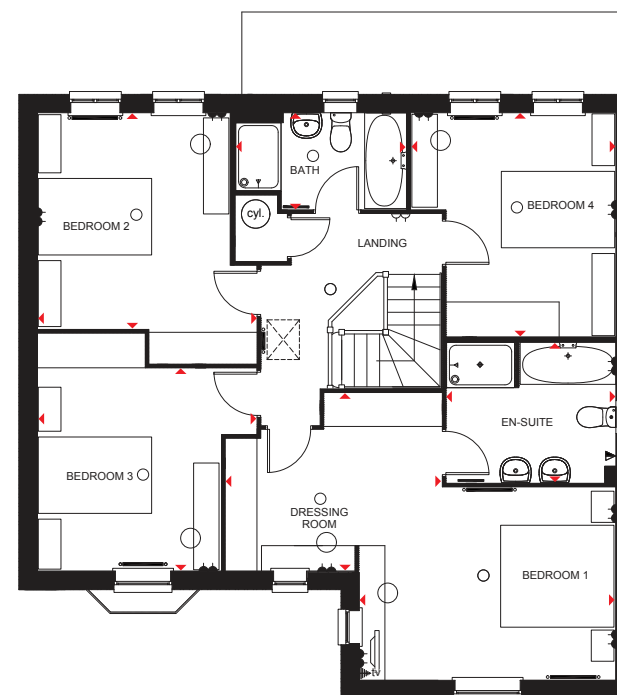
## Key

○ Light fitting	◀ Telephone outlet point	— Radiator	B Boiler	CYL Cylinder	wm Washing machine space	td Tumble dryer space
◀ Electric socket	◀ T.V. aerial socket	— Towel radiator	ST Store	f/f Fridge/freezer space	dw Dishwasher space	◀ Dimension location



### Ground Floor

Lounge	3783 x 5015 mm	12'5" x 16'5"
Kitchen/ Breakfast	6277 x 3925 mm	20'7" x 12'11"
Dining	3783 x 2986 mm	12'5" x 9'10"
Utility	2927 x 1727 mm	9'7" x 5'8"
WC	1890 x 885 mm	6'2" x 2'11"



### First Floor

Bed 1/ Dressing	6885 x 5066 mm	22'7" x 16'7"
En suite	2988 x 2400 mm	9'10" x 7'10"
Bed 2	4425 x 3389 mm	14'6" x 11'1"
Bed 3	3236 x 4190 mm	10'7" x 13'9"
Bed 4	3942 x 3611 mm	12'11" x 11'10"
Bath	3010 x 1700 mm	9'11" x 5'7"

We are on the New Homes Quality Code register of registered developers. "We" refers to the Barratt Developments PLC group brands including Barratt London, Barratt Homes and David Wilson Homes. All images used are for illustrative purposes. These and the dimensions given are illustrative for this house type and individual properties may differ. Please check with your Sales Adviser in respect of individual properties. We give maximum dimensions within each room which includes areas of fixtures and fittings including fitted furniture. These dimensions should not be used for carpet or flooring sizes, appliance spaces or items of furniture. All images, photographs and dimensions are not intended to be relied upon for, nor to form part of, any contract unless specifically incorporated in writing into the contract.

SP273257

dwh.co.uk



DAVID WILSON HOMES  
WHERE QUALITY LIVES

# THE STEVENSON

TWO BEDROOM MID-TERRACED HOME



Individual plots may vary, please speak to the Sales Adviser



An attractive first floor apartment with an integral garage below, The Stevenson provides flexible space for modern living. The spacious open-plan lounge has a dining area while the separate kitchen has room

for a breakfast table. As well as a good-sized master bedroom, there is also a second double bedroom and a bathroom. Windows are featured to the front of this apartment, while the rear has roof lights.



DAVID WILSON HOMES  
WHERE QUALITY LIVES

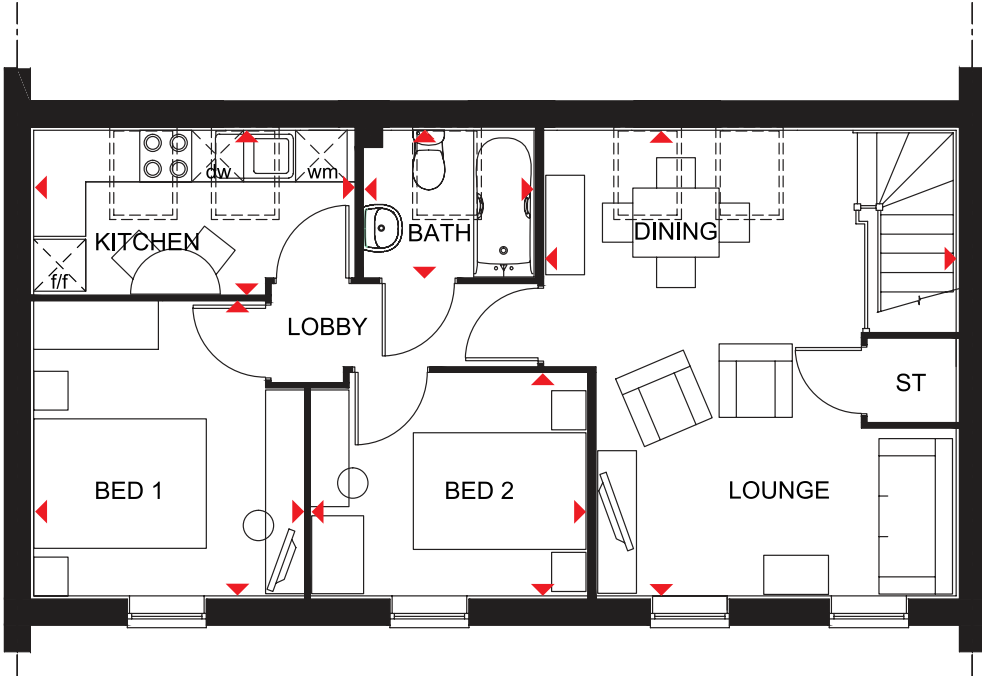
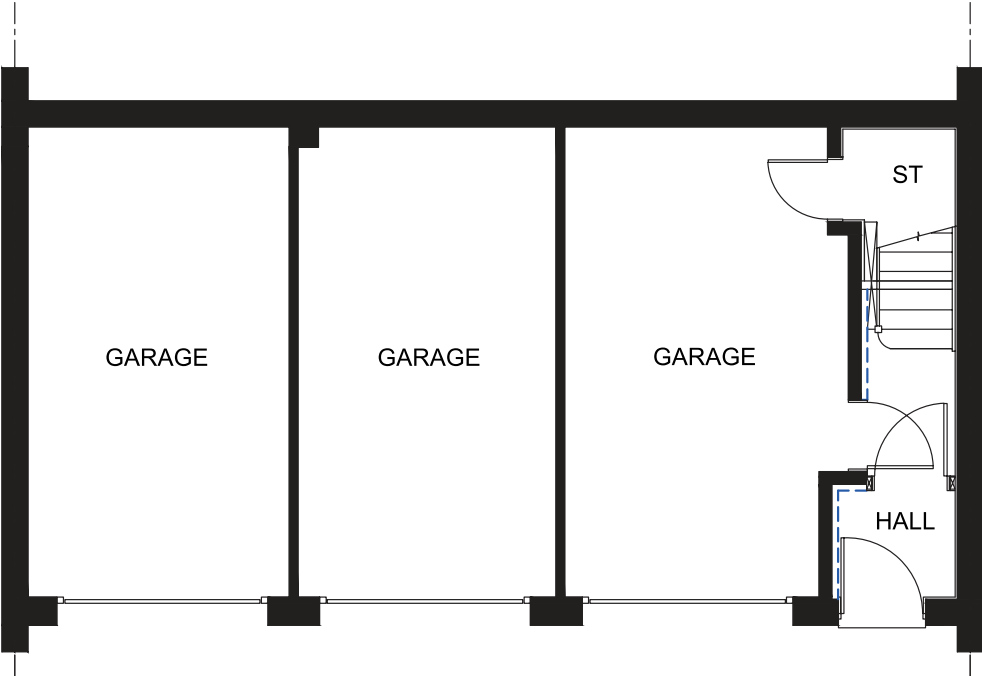
# THE STEVENSON

TWO BEDROOM MID-TERRACED HOME

**Key**

ST Store
f/f Fridge/freezer space
wm Washing machine space

dw Dishwasher space
Dimension location



<b>First Floor</b>		
Lounge/Dining	5389 x 4764 mm	17'8" x 15'8"
Kitchen	3709 x 1897 mm	12'2" x 6'3"
Bedroom 1	3403 x 3123 mm	11'2" x 10'3"
Bedroom 2	2573 x 3188 mm	8'5" x 10'5"
Bathroom	1965 x 1699 mm	6'5" x 5'7"

We are on the New Homes Quality Code register of registered developers. "We" refers to the Barratt Developments PLC group brands including Barratt London, Barratt Homes and David Wilson Homes. All images used are for illustrative purposes. These and the dimensions given are illustrative for this house type and individual properties may differ. Please check with your Sales Adviser in respect of individual properties. We give maximum dimensions within each room which includes areas of fixtures and fittings including fitted furniture. These dimensions should not be used for carpet or flooring sizes, appliance spaces or items of furniture. All images, photographs and dimensions are not intended to be relied upon for, nor to form part of, any contract unless specifically incorporated in writing into the contract.

P231-V-7DS00/ SP353990



# WILFORD

2 BEDROOM END-TERRACED HOME



Individual plots may vary, please speak to the Sales Adviser



The end-terraced Wilford is the ideal solution for those seeking a first or smaller home. Step through the front door and the hall leads to a separate, stylishly fitted kitchen and a downstairs WC. It then opens up into a spacious lounge and

dining area with French doors leading to the rear garden – the perfect place to entertain in good weather. Upstairs are two double bedrooms, a bathroom fitted with contemporary sanitary ware and plenty of essential storage space.



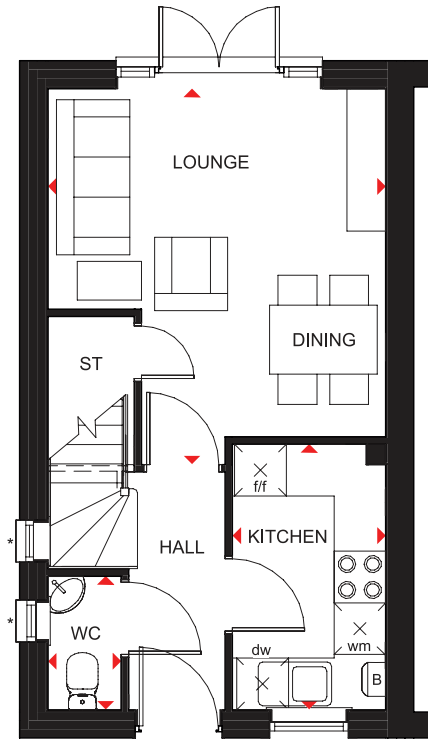
DAVID WILSON HOMES  
WHERE QUALITY LIVES

# WILFORD

2 BEDROOM END-TERRACED HOME

## Key

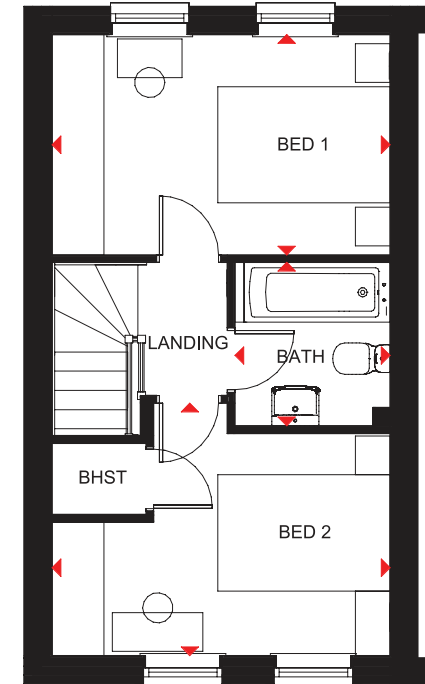
B	Boiler	f/f	Fridge/freezer space	◀▶	Dimension location
ST	Store	wm	Washing machine space		
BHST	Bulkhead store	dw	Dishwasher space		



### Ground Floor

Lounge/Dining	4362 x 3923 mm	14'4" x 12'10"
Kitchen	3083 x 1780 mm	10'1" x 5'10"
WC	1550 x 850 mm	5'1" x 2'9"

\* Window may be omitted on certain plots. Speak to a Sales Adviser for details on individual plots.



### First Floor

Bed 1	3923 x 2556 mm	12'10" x 8'5"
Bed 2	3923 x 2931 mm	12'10" x 9'7"
Bath	1897 x 1800 mm	6'3" x 5'11"

We are on the New Homes Quality Code register of registered developers. "We" refers to the Barratt Developments PLC group brands including Barratt London, Barratt Homes and David Wilson Homes. All images used are for illustrative purposes. These and the dimensions given are illustrative for this house type and individual properties may differ. Please check with your Sales Adviser in respect of individual properties. We give maximum dimensions within each room which includes areas of fixtures and fittings including fitted furniture. These dimensions should not be used for carpet or flooring sizes, appliance spaces or items of furniture. All images, photographs and dimensions are not intended to be relied upon for, nor to form part of, any contract unless specifically incorporated in writing into the contract.

P204-EC7DS00/SP390798

dwh.co.uk



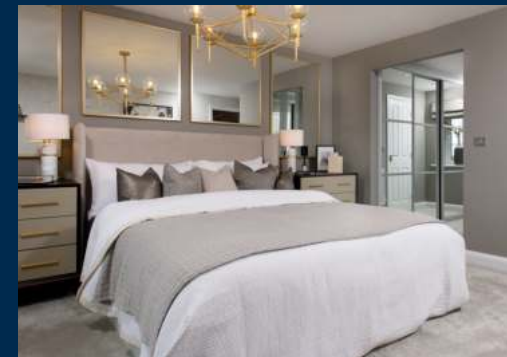
DAVID WILSON HOMES  
WHERE QUALITY LIVES

# THE WINSTONE

FOUR BEDROOM HOME



Individual plots may vary, please speak to the Sales Adviser



The Winstone is a truly magnificent detached family home. The elegant central hall leads to the stylish open-plan kitchen with bright breakfast and family areas, and a glazed bay leading to the garden. French doors also open onto the garden from the spacious lounge. The separate dining room, study and utility room

complete the ground floor. Upstairs are four double bedrooms, the beautiful main bedroom with dressing area and full en suite. The second bedroom also has an en suite, and the large bathroom with a separate shower provides for the rest of the family.



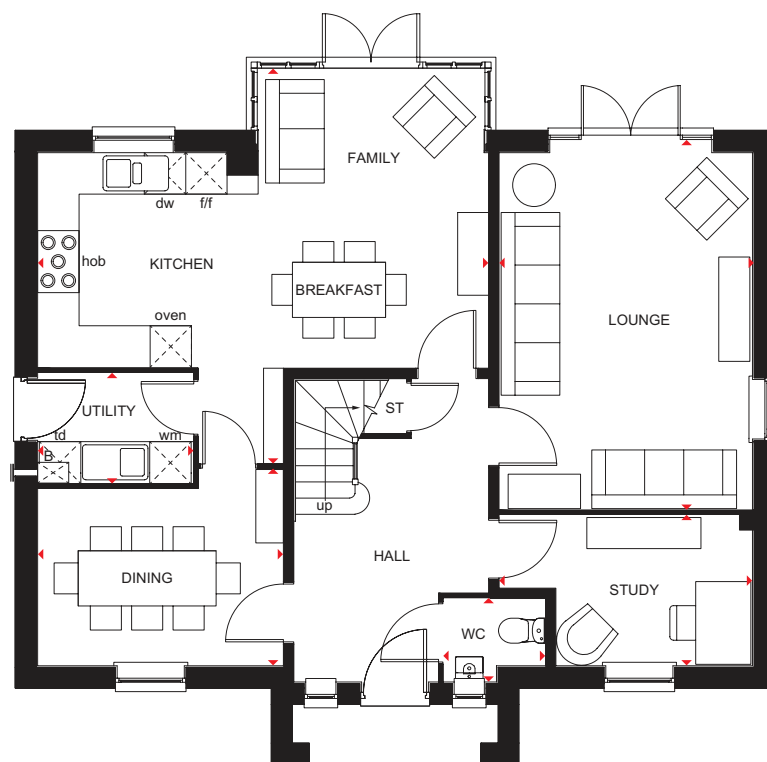
DAVID WILSON HOMES  
WHERE QUALITY LIVES

# THE WINSTONE

FOUR BEDROOM HOME

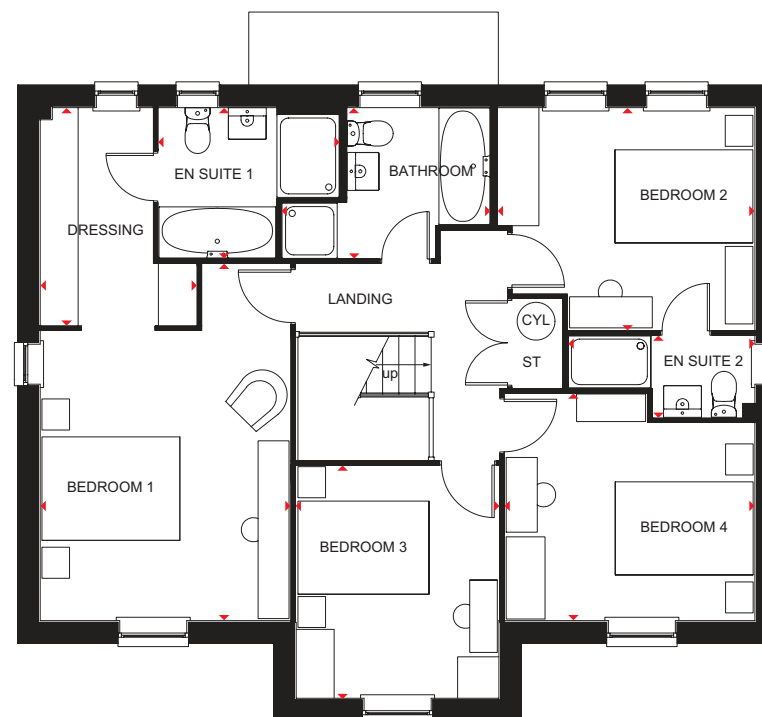
## Key

B	Boiler	f/f	Fridge/freezer space	td	Tumble dryer space
ST	Store	wm	Washing machine space	◀▶	Dimension location
CYL	Cylinder	dw	Dishwasher space		



### Ground Floor

Lounge	5171 x 3675 mm	16'11" x 12'0"
Kitchen/Family/Breakfast	6540 x 5725 mm	21'5" x 18'9"
Dining	3563 x 2851 mm	11'8" x 9'4"
Study	3675 x 2180 mm	12'0" x 7'2"
Utility	2250 x 1591 mm	7'4" x 5'3"
WC	1475 x 1210 mm	4'10" x 4'0"



### First Floor

Bedroom 1	5169 x 3624 mm	16'11" x 11'10"
Dressing	3155 x 2265 mm	10'4" x 7'5"
En Suite 1	2615 x 2182 mm	8'7" x 7'2"
Bedroom 2	3722 x 3223 mm	12'2" x 10'7"
En Suite 2	2710 x 1178 mm	8'11" x 3'10"
Bedroom 3	3368 x 2940 mm	11'1" x 9'8"
Bedroom 4	3623 x 3288 mm	11'10" x 10'9"
Bathroom	3014 x 2182 mm	9'10" x 7'2"

We are on the New Homes Quality Code register of registered developers. "We" refers to the Barratt Developments PLC group brands including Barratt London, Barratt Homes and David Wilson Homes. All images used are for illustrative purposes. These and the dimensions given are illustrative for this house type and individual properties may differ. Please check with your Sales Adviser in respect of individual properties. We give maximum dimensions within each room which includes areas of fixtures and fittings including fitted furniture. These dimensions should not be used for carpet or flooring sizes, appliance spaces or items of furniture. All images, photographs and dimensions are not intended to be relied upon for, nor to form part of, any contract unless specifically incorporated in writing into the contract.

BDW001830/SEP22

dwh.co.uk



DAVID WILSON HOMES  
WHERE QUALITY LIVES

# THE BRADGATE

FOUR BEDROOM DETACHED HOME



Individual plots may vary, please speak to the Sales Adviser



A home to suit all the family, The Bradgate offers a combination of flexible communal areas and dedicated quiet space. An expansive open-plan kitchen with separate utility has dining and family areas leading to the garden – and extended living space in good weather – via a beautiful walk-in glazed bay with

French doors. A separate study and a lounge with attractive bay window provide room to work and relax in. Four double bedrooms upstairs, the spacious master with en suite, ensure everyone has space of their own. A family bathroom completes this truly superb family home.



DAVID WILSON HOMES  
WHERE QUALITY LIVES

# THE BRADGATE

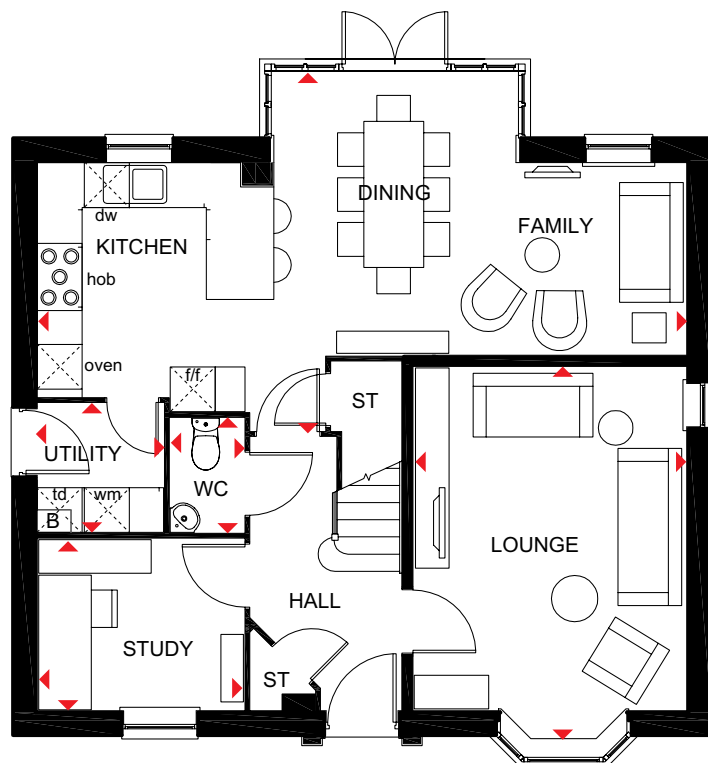
FOUR BEDROOM DETACHED HOME

## Key

B Boiler  
ST Store  
CYL Cylinder

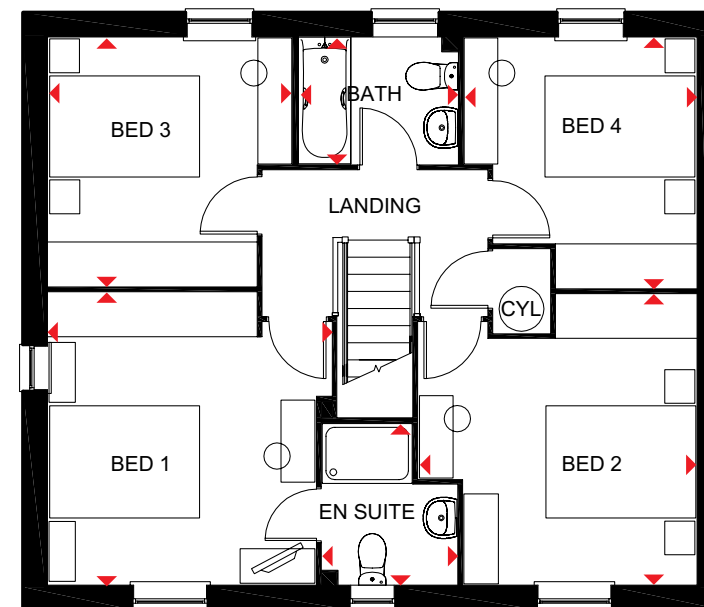
f/f Fridge/freezer space  
wm Washing machine space  
dw Dishwasher space

td Tumble dryer space  
◄► Dimension location



### Ground Floor

Lounge	4999 x 3658 mm	16'4" x 12'0"
Kitchen/Dining/Family	8677 x 4807 mm	28'5" x 15'9"
Study	2762 x 2295 mm	9'0" x 7'6"
Utility	1687 x 1724 mm	5'6" x 5'7"
WC	1524 x 986 mm	5'0" x 3'2"



### First Floor

Bed 1	3910 x 3791 mm	12'9" x 12'5"
En suite	2162 x 1799 mm	7'1" x 5'10"
Bed 2	3720 x 3885 mm	12'2" x 12'9"
Bed 3	3329 x 3263 mm	10'11" x 10'8"
Bed 4	3353 x 3112 mm	11'0" x 10'2"
Bath	2124 x 1700 mm	6'11" x 5'7"

We are on the New Homes Quality Code register of registered developers. "We" refers to the Barratt Developments PLC group brands including Barratt London, Barratt Homes and David Wilson Homes. All images used are for illustrative purposes. These and the dimensions given are illustrative for this house type and individual properties may differ. Please check with your Sales Adviser in respect of individual properties. We give maximum dimensions within each room which includes areas of fixtures and fittings including fitted furniture. These dimensions should not be used for carpet or flooring sizes, appliance spaces or items of furniture. All images, photographs and dimensions are not intended to be relied upon for, nor to form part of, any contract unless specifically incorporated in writing into the contract.

H417---7DS00 SP 341702

dwh.co.uk



DAVID WILSON HOMES  
WHERE QUALITY LIVES

# THE CHICHESTER

TWO BEDROOM APARTMENT



Individual plots may vary, please speak to the Sales Adviser



The Chichester is a stunning two bedroom apartment with an airy open-plan kitchen, lounge and dining area, perfect for modern-day living. The master bedroom features its very own en suite shower room. The main bathroom serves the remaining double bedroom.



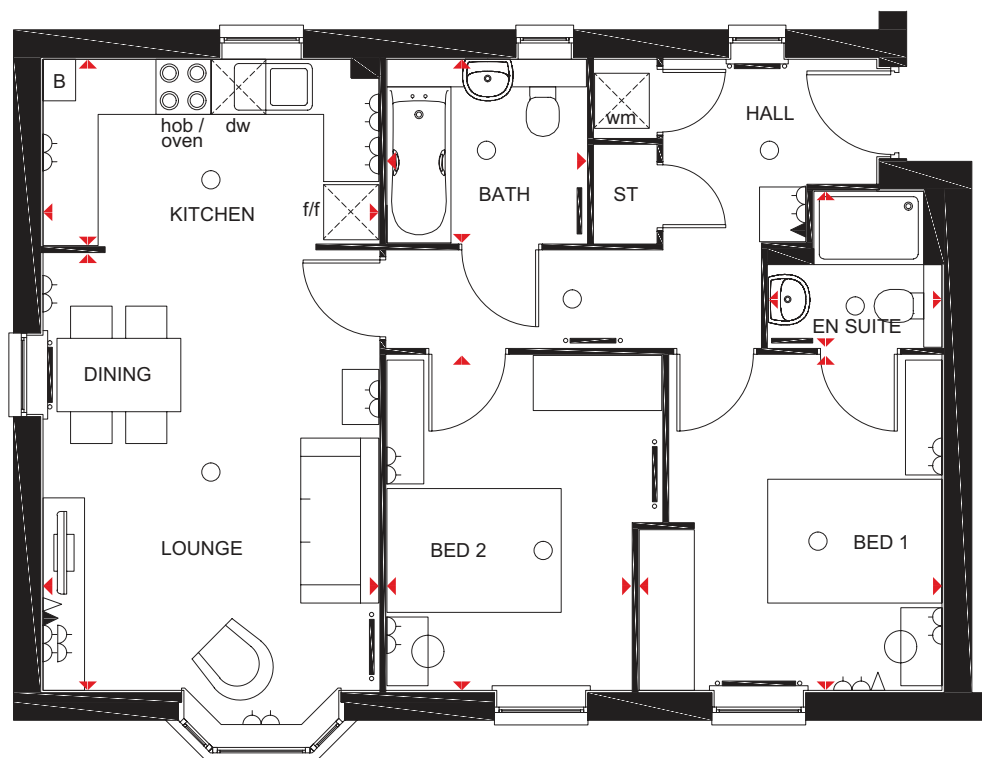
DAVID WILSON HOMES  
WHERE QUALITY LIVES

# THE CHICHESTER

TWO BEDROOM APARTMENT

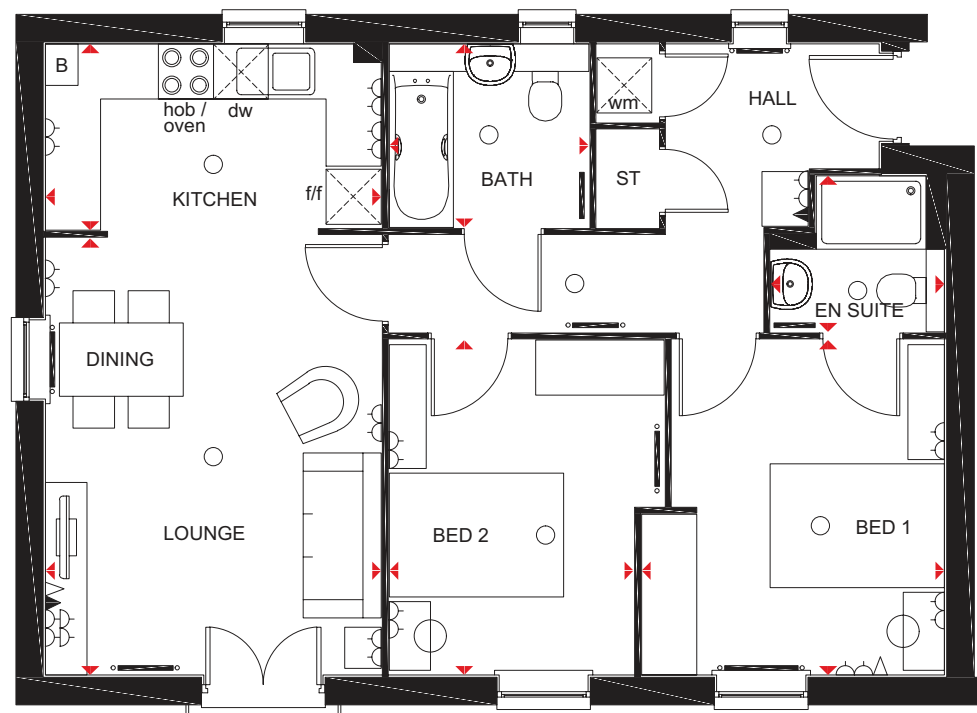
## Key

○ Light fitting	◀ Telephone outlet point	— Radiator	B Boiler	f/f Fridge/freezer space	dw Dishwasher space
◊ Electric socket	◊ T.V. aerial socket	— Towel radiator	ST Store	wm Washing machine space	◄ Dimension location



### Ground Floor

Lounge/Dining	4759 x 3660 mm	15'7" x 12'0"
Kitchen	3660 x 2000 mm	12'0" x 6'7"
Bedroom 1	3650 x 3302 mm	12'0" x 10'10"
En suite	1892 x 1702 mm	6'2" x 5'7"
Bedroom 2	3650 x 2663 mm	12'0" x 8'9"
Bathroom	2174 x 2000 mm	7'2" x 6'7"



### First Floor

Lounge/Dining	4759 x 3660 mm	15'7" x 12'0"
Kitchen	3660 x 2000 mm	12'0" x 6'7"
Bedroom 1	3650 x 3302 mm	12'0" x 10'10"
En suite	1892 x 1702 mm	6'2" x 5'7"
Bedroom 2	3650 x 2663 mm	12'0" x 8'9"
Bathroom	2174 x 2000 mm	7'2" x 6'7"

We are on the New Homes Quality Code register of registered developers. "We" refers to the Barratt Developments PLC group brands including Barratt London, Barratt Homes and David Wilson Homes. All images used are for illustrative purposes. These and the dimensions given are illustrative for this house type and individual properties may differ. Please check with your Sales Adviser in respect of individual properties. We give maximum dimensions within each room which includes areas of fixtures and fittings including fitted furniture. These dimensions should not be used for carpet or flooring sizes, appliance spaces or items of furniture. All images, photographs and dimensions are not intended to be relied upon for, nor to form part of, any contract unless specifically incorporated in writing into the contract.

SB85---5

dwh.co.uk



DAVID WILSON HOMES  
WHERE QUALITY LIVES