

GREAT OLDBURY

NUPEND, STONEHOUSE GL10 3SJ



A DEVELOPMENT OF 2, 3 AND 4 BEDROOM HOMES

GREAT OLDBURY

DEVELOPMENT LAYOUT

- Roseberry**
2 bedroom home
- Folkestone**
3 bedroom home
- Maidstone**
3 bedroom home
- Maidstone Special**
3 bedroom home
- Ellerton**
3 bedroom home
- Moresby**
3 bedroom home
- Norbury**
3 bedroom home
- Kingsley Special**
4 bedroom home
- Kingsley**
4 bedroom home
- Hemsworth**
4 bedroom home
- Alderney**
4 bedroom home
- Radleigh**
4 bedroom home
- Affordable Homes – Rented**
- Affordable Homes – Shared Ownership**
- Self-build Homes**



barratthomes.co.uk



Development layouts and landscaping are not intended to form part of any contract or warranty unless specifically incorporated in writing into the contract. Images and development layouts are for illustrative purposes and should be used for general guidance only. Development layouts including parking arrangements, social/affordable housing, play areas and public open spaces may change to reflect changes in planning permission and are not intended to form part of any contract or warranty unless specifically incorporated in writing. Please speak to your solicitor to whom full details of any planning consents including layout plans will be available. Great Oldbury is a marketing name only and may not be the designated postal address, which may be determined by The Post Office.

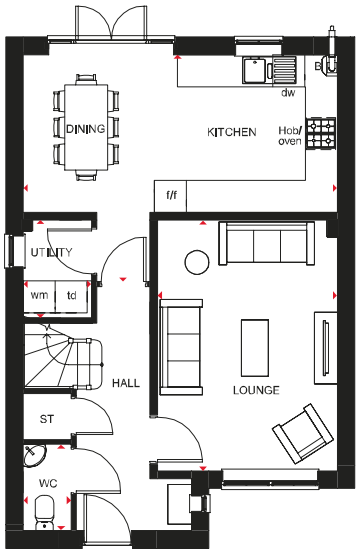
BDW001887/OCT22

KINGSLEY SPECIAL

4 BEDROOM HOME



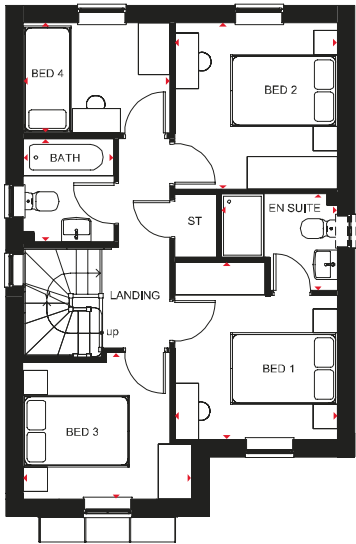
- Bright, airy family home with oversized windows to maximise light
- The large open-plan kitchen has a dining area with French doors leading to the garden. There is also a separate utility room
- The spacious lounge is just the place for the family to relax in
- Upstairs are three double bedrooms, the main bedroom with en suite, one single bedroom and a family bathroom



Ground Floor

Lounge	3370 x 4710mm	11'1" x 15'5"
Kitchen/Dining	5895 x 4268mm	19'4" x 14'0"
WC	904 x 1627mm	3'0" x 5'4"
Utility	1287 x 1841mm	4'3" x 6'0"

[Approximate dimensions]



First Floor

Bedroom 1	3054 x 3328mm	10'0" x 10'11"
En Suite	2181 x 1816mm	7'2" x 5'11"
Bedroom 2	3054 x 3123mm	10'0" x 10'3"
Bedroom 3	3160 x 2747mm	10'4" x 9'0"
Bedroom 4	2754 x 2065mm	9'0" x 6'9"
Bathroom	1700 x 1937mm	5'7" x 6'4"

[Approximate dimensions]

KEY	B	Boiler	f/f	Fridge/freezer space	◀ ▶	Dimension location
	ST	Store	dw	Dishwasher space		
	wm	Washing machine space	td	Tumble dryer space		

CUSTOMER SERVICE BY BARRATT HOMES

BUILDING OUR CUSTOMER SERVICE TO BE THE BEST

At Barratt we are genuinely committed to delivering the highest standards of customer service. The same exacting standards that have helped us win more quality awards than any other major housebuilder also ensure we look after our customers as well as we possibly can.

We believe that solid foundations are as important to a customer relationship as they are to a building. During the planning and design process we go to great lengths to make sure the homes and developments we build are perfectly in tune with the needs and aspirations of their prospective owners.

Our Directors carry out weekly site inspections before, during and after the build process. As your home is built, it is checked at every stage to ensure it reaches the exacting standards we demand.

Our Customer Service Charter lays out our commitments to you and details the care, support and assistance we'll provide you with throughout your purchase and long after you've moved in.

As a result of the outstanding service we provide to our customers, we have been awarded the exceptional accreditation of "5 Star Builder" by the independent Home Builders Federation. 29,000 homebuyers across the country took part in the survey and this honour recognises the highest levels of positive recommendation by our customers, as well as the superior build quality of our homes.



5 GREAT REASONS TO BUY WITH BARRATT

1. 5 Stars for Customer Satisfaction

No other major national housebuilder** has been awarded a Home Builders Federation 5 Star Housebuilder accolade every year since 2010*. All thanks to positive recommendations by our customers.

2. Building homes for over 5 decades

We've been established for over 5 decades and in that time have built over 300,000 new homes. Our commitment to quality and innovation is shown in the highest standards of design, construction, finish and the customer service we provide.

3. Award winners, time and time again

Our steadfast commitment to quality has ensured that for the tenth year in a row our site managers have picked up more awards than any other housebuilder, winning NHBC Pride in the Job awards for their workmanship and demonstrating our dedication and commitment to building homes of the very highest standard.

4. Creating places where you'll love to live both inside and out

Our light, open-plan properties are really adaptable – every room can suit a variety of lifestyles. Whether you want space for the kids to play or more room to entertain friends, our fantastic range of homes can give you that flexibility.

We also know our customers love green open spaces and we go to great lengths to maintain and enhance the local environment on our developments. In fact, we plant an average of 20 shrubs or trees for each home we build, creating a beautiful and sustainable environment to live in.

5. Our energy-efficient homes could save you money

Every home we build is sustainable and energy-efficient – minimising their impact on the environment, whilst reducing your energy costs too. Our homes could save you money by being 45% to 55% more energy-efficient than a same-sized older home – even after it's been modernised. As a result, you could save a staggering £1,312*** per year on your energy bill.

Find out more, talk to one of our Sales Advisers today.



Images may include optional upgrades at additional cost. All information in this document is correct to the best of our knowledge at the time of going to print. Great Oldbury is a marketing name only and may not be the designated postal address, which may be determined by The Post Office. **Refers to the Barratt Developments PLC Group brands. ***Costs based upon the comparison of a new build four-bed detached house built to 2010 regulations vs. Victorian property upgraded with modern-day improvements. An upgraded Victorian home means one which has the following improvements over original build specification: 200mm loft insulation, double glazing to half of all windows, a 72% efficient (non-condensing) gas boiler and insulated hot water cylinder. Source: Zero Carbon Hub and NHBC Foundation 2012.

NEW HOMES QUALITY CODE

Housebuilders and developers who build new homes will be expected to register with the New Homes Quality Board (NHQB). As long as a housebuilder or developer has followed the correct registration process, including completing the necessary training, introducing a complaints procedure, and following other processes and procedures that are needed to meet the requirements of this New Homes Quality Code (the code), they will become a registered developer.

Registered developers agree to follow the code and the New Homes Ombudsman Service, including accepting the decisions of the New Homes Ombudsman in relation to dealings with customers. If a registered developer does not meet the required standards, or fails to accept and act in line with the decisions of the New Homes Ombudsman, they may have action taken against them, including being removed from the register of registered developers.

The code sets out the requirements that registered developers must meet. The code may be updated from time to time to reflect changes to industry best practice as well as the decisions of the New Homes Ombudsman Service.

All homes built by registered developers must meet building-safety and other regulations. All registered developers should aim to make sure there are no snags or defects in their properties before the keys are handed over to a customer. If there are any snags or defects, these should be put right within the agreed timescales.

WHAT THE CODE COVERS

For the purposes of this code, 'customer' means a person who is buying or intends to buy a new home which they will live in or give to another person. (If a new home is being bought in joint names, 'the customer' includes all the joint customers.) However, the New Homes Quality Board have also started work to consider other groups of customers and what they should be able to expect from a new home. This includes shared owners and people who are buying a new home to let to other people. Any changes the New Homes Quality Board make to the code to reflect the needs of other groups of customers will be developed through consultation, and they will continually assess and review the effectiveness of the code, and any new laws or regulations that apply. Other areas which are not covered by the code are claims for loss of property value or blight (where a property falls in value or becomes difficult to sell because of major public work in the area), personal injury or claims that are not covered by the scheme rules of the New Homes Ombudsman Service.



barratthomes.co.uk

0330 057 6000

Calls to 03 numbers are charged at the same rate as dialling an 01 or 02 number. If your fixed line or mobile service has inclusive minutes to 01/02 numbers, then calls to 03 are counted as part of this inclusive call volume. Non-BT customers and mobile phone users should contact their service providers for information about the cost of calls.

