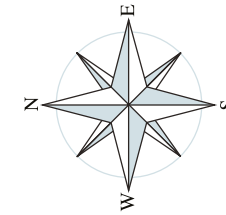


BRUNEL QUARTER

— C H E P S T O W —

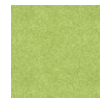


KEY

- **THE WILFORD**
2 bedroom home
- **THE ARCHFORD**
3 bedroom home
- **THE HADLEY**
3 bedroom home
- **THE KENNETT**
3 bedroom home
- **THE CANNINGTON**
3 bedroom home
- **THE INGLEBY**
4 bedroom home
- **THE SHENTON**
4 bedroom home
- **THE PARKIN**
4 bedroom home
- **THE CORNELL**
4 bedroom home
- **THE EXETER**
4 bedroom home
- **THE HOLDEN**
4 bedroom home
- ★ **Sales Office & Show Home**
- BCP **Bin Collection Point**
- S/S **Sub Station**



SUSTAINABILITY FEATURES



Grassland



Path



New tree line



Mature tree line



Swift boxes



Bat boxes



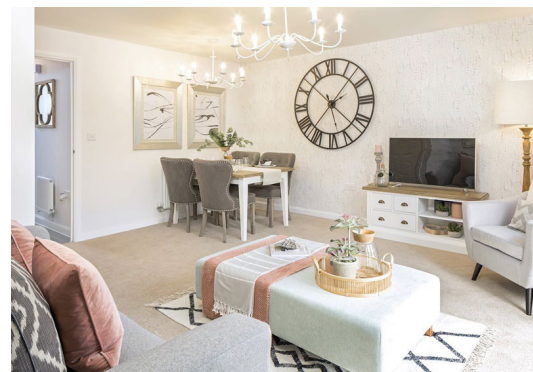
Hedgehog highways

THIS DEVELOPMENT ALSO FEATURES:

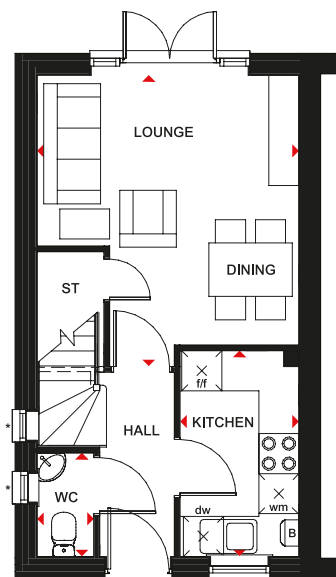


THE WILFORD

TWO BEDROOM HOME



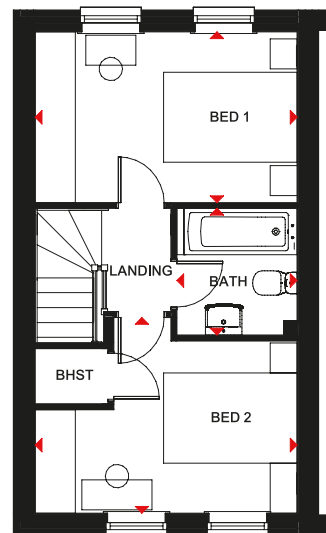
The Wilford is the ideal solution for those seeking a first or smaller house. Step through the front door and the hall leads to a separate stylishly fitted kitchen and a downstairs WC. It then opens up into a spacious lounge and dining area with French doors leading to the rear garden – the perfect place to entertain in good weather. Upstairs are two double bedrooms, a bathroom fitted with contemporary sanitary ware and plenty of essential storage space.



Ground Floor

Lounge/Dining	4362 x 3923 mm	14'4" x 12'10"
Kitchen	3083 x 1780 mm	10'1" x 5'10"
WC	1550 x 850 mm	5'1" x 2'9"

* Window may be omitted on certain plots. Speak to a Sales Adviser for details on individual plots.



First Floor

Bed 1	3923 x 2556 mm	12'10" x 8'5"
Bed 2	3923 x 2931 mm	12'10" x 9'7"
Bath	1897 x 1800 mm	6'3" x 5'11"

Key

B	Boiler	BHST	Bulkhead store	wm	Washing machine space	◀▶	Dimension location
ST	Store	f/f	Fridge/freezer space	dw	Dishwasher space		

dwh.co.uk



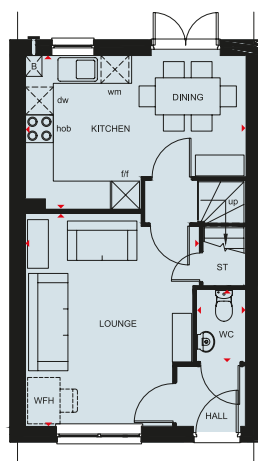
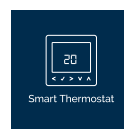
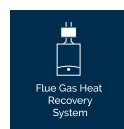
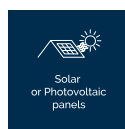
DAVID WILSON HOMES
WHERE QUALITY LIVES

We are on the New Homes Quality Code register of registered developers. "We" refers to the Barratt Developments PLC group brands including Barratt London, Barratt Homes and David Wilson Homes. All images used are for illustrative purposes. These and the dimensions given are illustrative for this house type and individual properties may differ. Please check with your Sales Adviser in respect of individual properties. We give maximum dimensions within each room which includes areas of fixtures and fittings including fitted furniture. These dimensions should not be used for carpet or flooring sizes, appliance spaces or items of furniture. All images, photographs and dimensions are not intended to be relied upon for, nor to form part of, any contract unless specifically incorporated in writing into the contract.

BDW001943/OCT22

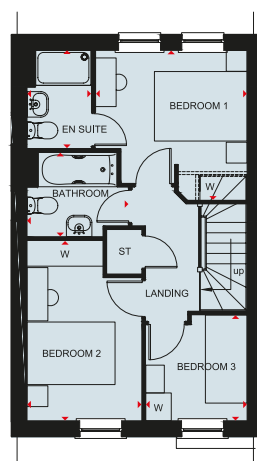
THE ARCHFORD

THREE BEDROOM TERRACED HOME



Ground Floor

Lounge	4604 x 3746 mm	15'1" x 13'3"
Kitchen	4750 x 3310 mm	15'7" x 10'10"
WC	1562 x 1054 mm	5'1" x 3'5"



First Floor

Bedroom 1	3276 x 3234 mm	10'9" x 10'7"
En suite	2119 x 1385 mm	6'11" x 4'7"
Bedroom 2	3891 x 2475 mm	12'9" x 8'1"
Bedroom 3	2286 x 2186 mm	7'6" x 7'2"
Bathroom	2181 x 1816 mm	7'2" x 5'11"

Key

B	Boiler	wm	Washing machine space	dw	Dishwasher space	W	Wardrobe space
ST	Store	f/f	Fridge/freezer space	WFH	Working from home space	◀▶	Dimension location



Scan here for more details



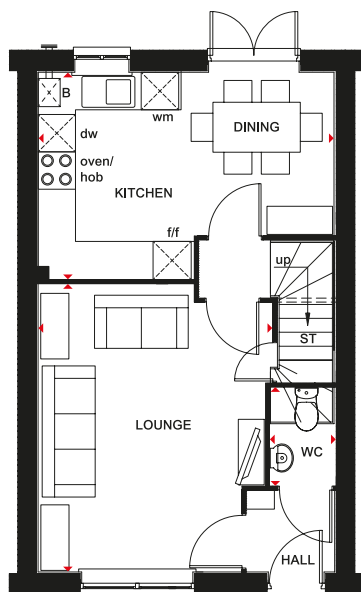
DAVID WILSON HOMES

THE ARCHFORD

THREE BEDROOM HOME

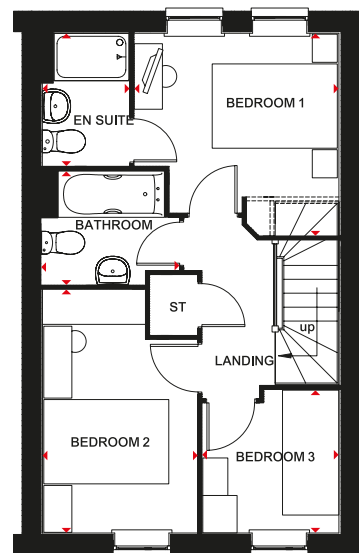


A bright family home. The Archford has a stylish open-plan kitchen and dining area, with French doors opening out onto the rear garden – creating the option for even more living space in good weather. A lobby separates the kitchen and the spacious lounge, with stairs leading to the first floor. Here, the main bedroom has its own en suite. This attractive home is completed by a further double bedroom, a single bedroom and a family bathroom.



Ground Floor

Lounge	4604 x 3746 mm	15'1" x 12'3"
Kitchen/Dining	4750 x 3310 mm	15'7" x 10'10"
WC	1561 x 1015 mm	5'1" x 3'4"



First Floor

Bedroom 1	3235 x 3276 mm	10'7" x 10'9"
En Suite	1385 x 2119 mm	4'7" x 6'11"
Bedroom 2	2475 x 3891 mm	8'1" x 12'9"
Bedroom 3	2286 x 2186 mm	7'6" x 7'2"
Bathroom	1815 x 2181 mm	5'11" x 7'2"

Key

B	Boiler	f/f	Fridge/freezer space	dw	Dishwasher space
ST	Store	w/m	Washing machine space	◀▶	Dimension location

dwh.co.uk



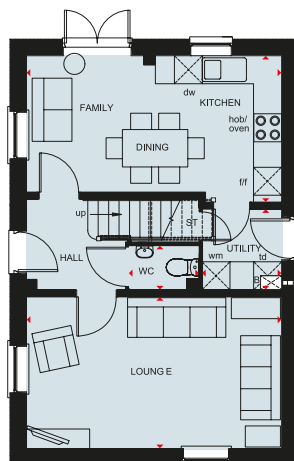
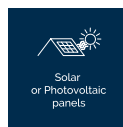
DAVID WILSON HOMES
WHERE QUALITY LIVES

We are on the New Homes Quality Code register of registered developers. "We" refers to the Barratt Developments PLC group brands including Barratt London, Barratt Homes and David Wilson Homes. All images used are for illustrative purposes. These and the dimensions given are illustrative for this house type and individual properties may differ. Please check with your Sales Adviser in respect of individual properties. We give maximum dimensions within each room which includes areas of fixtures and fittings including fitted furniture. These dimensions should not be used for carpet or flooring sizes, appliance spaces or items of furniture. All images, photographs and dimensions are not intended to be relied upon for, nor to form part of, any contract unless specifically incorporated in writing into the contract.

BDW001943/OCT22

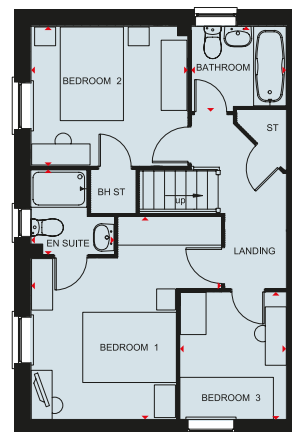
HADLEY

THREE BEDROOM END OR DETACHED HOME



Ground Floor

Lounge	5455 x 3153 mm	17'11" x 10'4"
Kitchen	5455 x 3143 mm	17'11" x 10'4"
Utility	1824 x 1705mm	5'12" x 5'7"
WC	1496 x 1001mm	4'11" x 3'3"



First Floor

Bedroom 1	4407 x 4058 mm	14'5" x 13'4"
En Suite	1857 x 1771 mm	6'1" x 5'9"
Bedroom 2	3341 x 2978 mm	10'12" x 9'9"
Bedroom 3	2713 x 2265 mm	8'11" x 7'5"
Bathroom	2025 x 1811 mm	6'8" x 6'0"

Key

B	Boiler	wm	Washing machine space	dw	Dishwasher space	W	Wardrobe space	♦♦	Dimension location
ST	Store	f/f	Fridge/freezer space	TD	Tumble dryer	WFH	Working from home space		



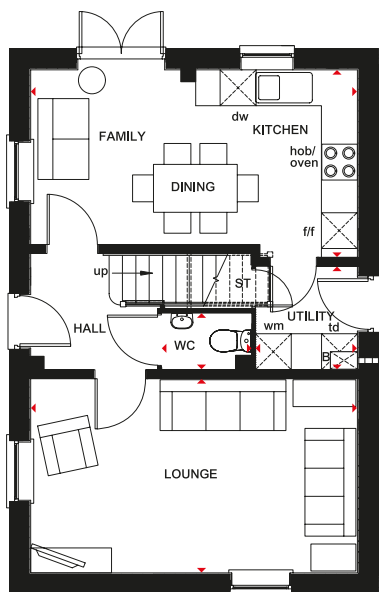
DAVID WILSON HOMES

THE HADLEY

THREE BEDROOM HOME

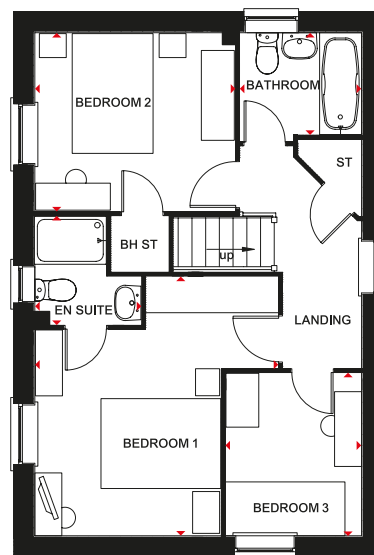


From the outside, the detached Hadley has a delightfully contemporary look. And inside, the open-plan kitchen – with its dining and family areas and separate utility room – is designed very much for busy, modern living. French doors to the garden give the whole room a bright and airy feeling. The spacious dual-aspect lounge meanwhile provides the perfect place to relax. Upstairs are two double bedrooms, the large main bedroom with en suite, a single bedroom and a family bathroom.



Ground Floor

Lounge	5455 x 3153 mm	17'11" x 10'4"
Kitchen/Family/Dining	5455 x 3143 mm	17'11" x 10'4"
Utility	1730 x 1688 mm	5'8" x 5'6"
WC	1480 x 1014 mm	4'10" x 3'4"



First Floor

Bedroom 1	4324 x 4058 mm	14'2" x 13'3"
En Suite	1800 x 1771 mm	5'11" x 5'9"
Bedroom 2	3341 x 2978 mm	11'3" x 9'9"
Bedroom 3	2713 x 2265 mm	8'11" x 7'5"
Bathroom	2025 x 1811 mm	6'8" x 6'0"

Key

B	Boiler	BH ST	Bulkhead Store	wm	Washing machine space	td	Tumble dryer space
ST	Store	f/f	Fridge/freezer space	dw	Dishwasher space	◀▶	Dimension location

dwh.co.uk



DAVID WILSON HOMES
WHERE QUALITY LIVES

We are on the New Homes Quality Code register of registered developers. "We" refers to the Barratt Developments PLC group brands including Barratt London, Barratt Homes and David Wilson Homes. All images used are for illustrative purposes. These and the dimensions given are illustrative for this house type and individual properties may differ. Please check with your Sales Adviser in respect of individual properties. We give maximum dimensions within each room which includes areas of fixtures and fittings including fitted furniture. These dimensions should not be used for carpet or flooring sizes, appliance spaces or items of furniture. All images, photographs and dimensions are not intended to be relied upon for, nor to form part of, any contract unless specifically incorporated in writing into the contract.

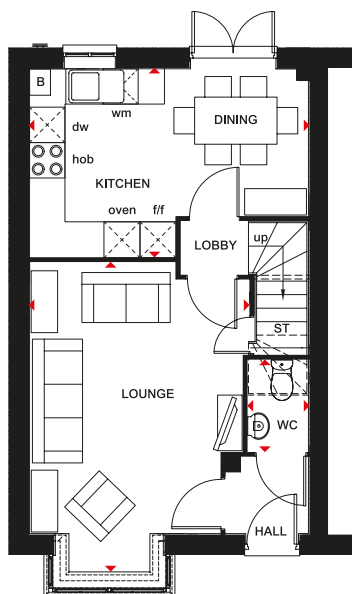
BDW001943/OCT22

THE KENNETT

THREE BEDROOM HOME

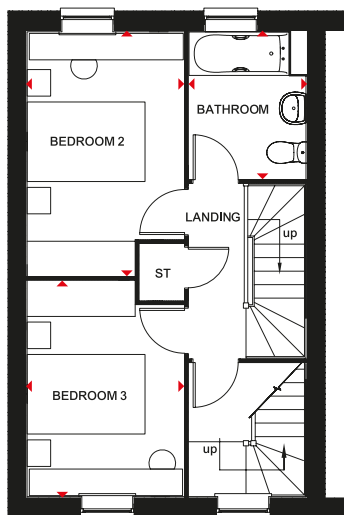


Intelligently designed over three floors, the Kennett is a good-sized family home ideal for flexible modern living. The open-plan kitchen on the ground floor incorporates a dining area opening out onto the rear garden. A lobby separating the kitchen from the spacious bay-fronted lounge leads upstairs. Here are two double bedrooms, the family bathroom and access to the second floor, which is entirely occupied by a spacious main bedroom and en suite.



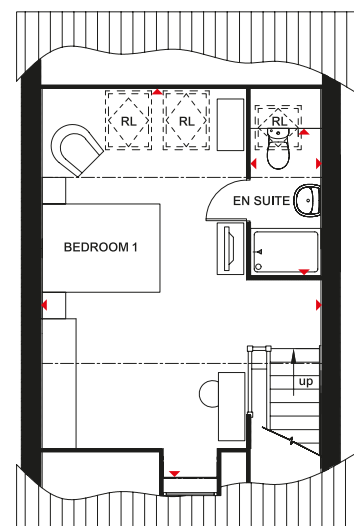
Ground Floor

Lounge	5001 x 3729 mm	16'4" x 12'2"
Kitchen/Dining	4733 x 3197 mm	15'6" x 10'5"
WC	1561 x 1054 mm	5'1" x 3'5"



First Floor

Bedroom 2	4116 x 2659 mm	13'6" x 8'8"
Bedroom 3	3658 x 2659 mm	12'0" x 8'8"
Bathroom	2498 x 1985 mm	8'2" x 6'6"



Second Floor

Bedroom 1	6681 x 4733 mm*	21'11" x 15'6"*
En Suite	1189 x 2497 mm*	3'11" x 8'2"*

* Overall floor dimension includes lowered ceiling areas

Key

B	Boiler	f/f	Fridge/freezer space	dw	Dishwasher space	◆◆	Dimension location
ST	Store	wm	Washing machine space	RL	Roof light		

dwh.co.uk



DAVID WILSON HOMES
WHERE QUALITY LIVES

We are on the New Homes Quality Code register of registered developers. "We" refers to the Barratt Developments PLC group brands including Barratt London, Barratt Homes and David Wilson Homes. All images used are for illustrative purposes. These and the dimensions given are illustrative for this house type and individual properties may differ. Please check with your Sales Adviser in respect of individual properties. We give maximum dimensions within each room which includes areas of fixtures and fittings including fitted furniture. These dimensions should not be used for carpet or flooring sizes, appliance spaces or items of furniture. All images, photographs and dimensions are not intended to be relied upon for, nor to form part of, any contract unless specifically incorporated in writing into the contract.

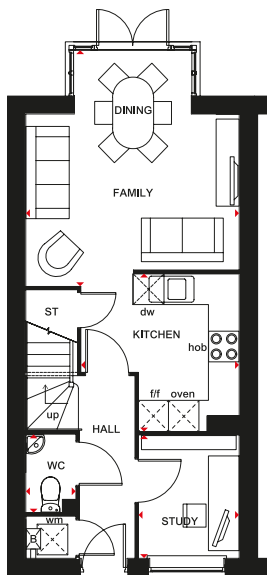
BDW001923/OCT22

THE CANNINGTON

THREE BEDROOM HOME

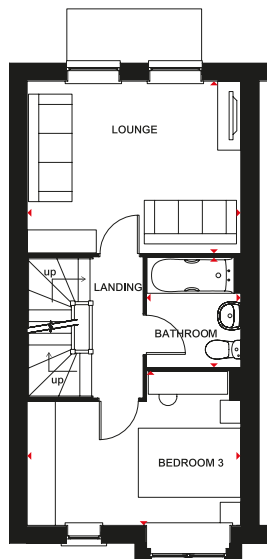


The Cannington is designed over three floors creating a home for flexible modern living. A large glazed bay leading to the garden allows light to stream into the spacious family/dining room and adjacent kitchen on the ground floor, where there is also a study and a utility cupboard. The lounge is on the first floor along with the family bathroom and one of the three double bedrooms, while two further double bedrooms – the main bedroom with en suite – are on the top floor.



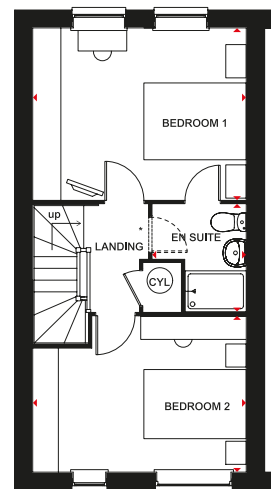
Ground Floor

Family/Dining	6260 x 4170 mm	20'6" x 13'8"
Kitchen	3081 x 3070 mm	10'1" x 10'1"
Study	2396 x 1959 mm	7'10" x 6'5"
WC	1512 x 968 mm	5'0" x 3'2"



First Floor

Lounge	4170 x 3256 mm	13'8" x 10'8"
Bedroom 3	4170 x 3020 mm	13'8" x 9'11"
Bathroom	2138 x 1827 mm	7'0" x 6'0"



Second Floor

Bedroom 1	4170 x 3256 mm	13'8" x 10'8"
En Suite	2100 x 1827 mm	6'11" x 6'0"
Bedroom 2	4170 x 3144 mm	13'8" x 10'4"

*En suite door may be omitted on plots.
Speak to a Sales Adviser for details on individual plots.

Key

B Boiler	CYL Cylinder	wm Washing machine space	◄► Dimension location
ST Store	f/f Fridge/freezer space	dw Dishwasher space	

dwh.co.uk



DAVID WILSON HOMES
WHERE QUALITY LIVES

We are on the New Homes Quality Code register of registered developers. "We" refers to the Barratt Developments PLC group brands including Barratt London, Barratt Homes and David Wilson Homes. All images used are for illustrative purposes only. Floor plans are intended to give a general indication of the proposed floor layout only. The dimensions are accurate to within + or - 50mm but should not be used for carpet or flooring sizes, appliance spaces or items of furniture. Please ask our Sales Adviser for details of the treatments specified for individual plots. Individual features such as windows, brick and other materials' colours may vary, as may drainage, heating and electrical layouts. All images, photographs and dimensions are not intended to form part of any contract or warranty unless specifically incorporated in writing into the contract.

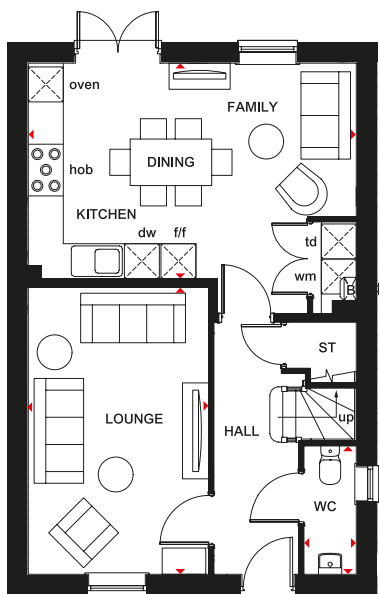
BDW001943/OCT22

THE INGLEBY

FOUR BEDROOM HOME

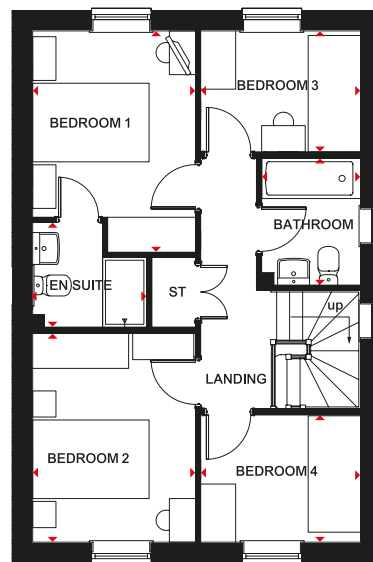


The Ingleby is a modern family home featuring a large open-plan kitchen with its dining and family areas. Essential utility space is discreetly tucked away in a corner of the kitchen and French doors give access to the rear garden. The separate lounge provides a comfortable haven where everyone can relax. Upstairs are two double bedrooms, the main bedroom with en suite, two single bedrooms and a family bathroom.



Ground Floor

Kitchen/ Dining/Family	5636 x 4305 mm	18'5" x 14'1"
Lounge	4930 x 3100 mm	16'2" x 10'2"
WC	2206 x 900 mm	7'3" x 3'0"



First Floor

Bedroom 1	3802 x 2800 mm	12'6" x 9'2"
En Suite	1962 x 1800 mm	6'5" x 5'11"
Bedroom 2	3587 x 2800 mm	11'9" x 9'2"
Bedroom 3	2747 x 2066 mm	9'0" x 6'9"
Bedroom 4	2747 x 2172 mm	9'0" x 7'1"
Bathroom	2179 x 1700 mm	7'2" x 5'7"

Key

B	Boiler	f/f	Fridge/freezer space	dw	Dishwasher space	◀▶	Dimension location
ST	Store	wm	Washing machine space	td	Tumble dryer space		

dwh.co.uk



DAVID WILSON HOMES
WHERE QUALITY LIVES

We are on the New Homes Quality Code register of registered developers. "We" refers to the Barratt Developments PLC group brands including Barratt London, Barratt Homes and David Wilson Homes. All images used are for illustrative purposes only. Floor plans are intended to give a general indication of the proposed floor layout only. The dimensions are accurate to within + or - 50mm but should not be used for carpet or flooring sizes, appliance spaces or items of furniture. Please ask our Sales Adviser for details of the treatments specified for individual plots. Individual features such as windows, brick and other materials' colours may vary, as may drainage, heating and electrical layouts. All images, photographs and dimensions are not intended to form part of any contract or warranty unless specifically incorporated in writing into the contract.

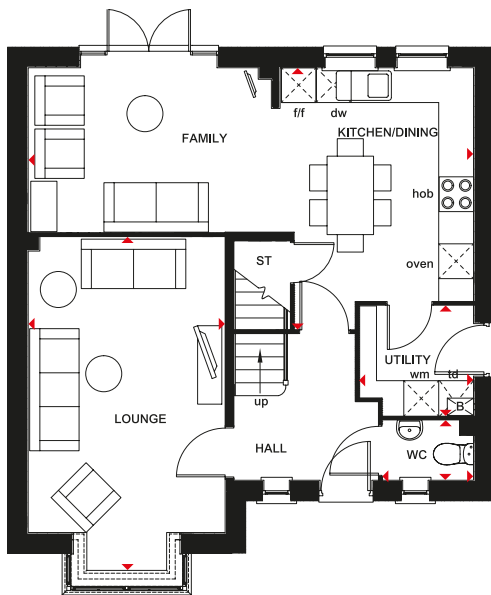
BDW001943/OCT22

THE SHENTON

FOUR BEDROOM HOME

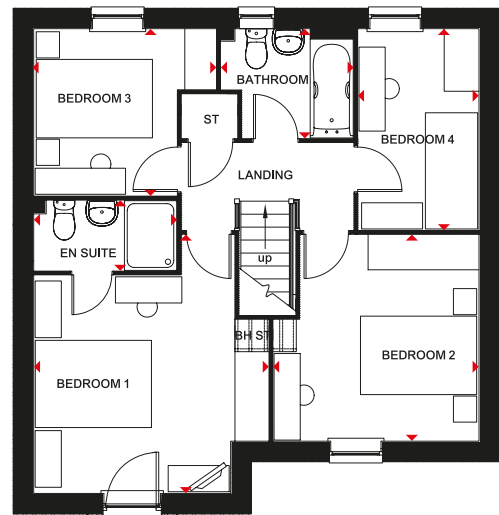


The Shenton is a stylish, bay-fronted, detached home providing plenty of flexible living space. The generous open-plan kitchen with adjacent utility room incorporates dining and family areas leading to the garden via French doors. The good-sized lounge is light and airy thanks to the walk-in bay window. Upstairs are three double bedrooms, the main bedroom with en suite, a single bedroom and family bathroom.



Ground Floor

Lounge	5478 x 3390 mm	17'11" x 11'1"
Kitchen/Dining/ Family	7665 x 4499 mm	25'1" x 16'4"
Utility	1961 x 1878 mm	6'11" x 6'2"
WC	1561 x 1033 mm	5'1" x 3'5"



First Floor

Bedroom 1	4451 x 4040 mm	14'7" x 13'3"
En Suite	2461 x 1200 mm	8'1" x 3'11"
Bedroom 2	3551 x 3536 mm	11'8" x 11'7"
Bedroom 3	3137 x 2871 mm	10'3" x 9'5"
Bedroom 4	3461 x 2076 mm	11'4" x 6'10"
Bathroom	2275 x 1880 mm	7'6" x 6'2"

Key

B	Boiler	BH ST	Bulkhead store	wm	Washing machine space	td	Tumble dryer space
ST	Store	f/f	Fridge/freezer space	dw	Dishwasher space	▶	Dimension location

dwh.co.uk



DAVID WILSON HOMES
WHERE QUALITY LIVES

We are on the New Homes Quality Code register of registered developers. "We" refers to the Barratt Developments PLC group brands including Barratt London, Barratt Homes and David Wilson Homes. All images used are for illustrative purposes only. Floor plans are intended to give a general indication of the proposed floor layout only. The dimensions are accurate to within + or - 50mm but should not be used for carpet or flooring sizes, appliance spaces or items of furniture. Please ask our Sales Adviser for details of the treatments specified for individual plots. Individual features such as windows, brick and other materials' colours may vary, as may drainage, heating and electrical layouts. All images, photographs and dimensions are not intended to form part of any contract or warranty unless specifically incorporated in writing into the contract.

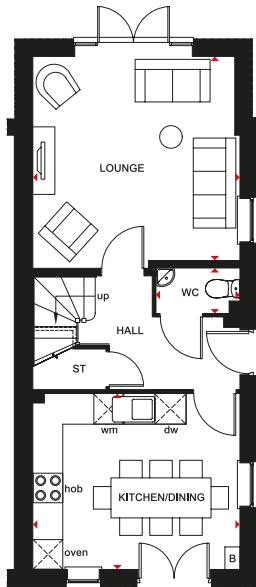
BDW001943/OCT22

THE PARKIN

FOUR BEDROOM HOME

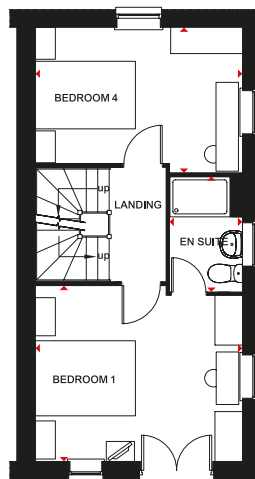


With flowing living spaces set over three floors, tied together by a stylish design, the Parkin is a beautiful family home. There is a front facing ground floor kitchen and dining area while the lounge features French doors opening onto the rear garden. The first floor offers a main bedroom with en suite shower room and a further double bedroom. A family bathroom and two double bedrooms complete the second floor.



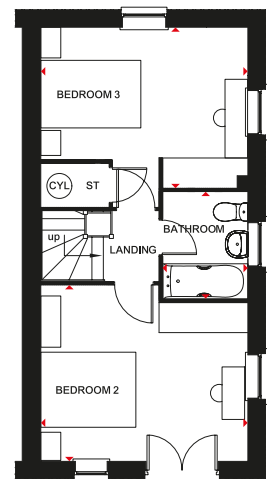
Ground Floor

Lounge	4234 x 4150 mm	13'11" x 13'7"
Kitchen/Dining	4150 x 3503 mm	13'7" x 11'6"
WC	1675 x 900 mm	5'6" x 2'11"



First Floor

Bedroom 1	3503 x 4150 mm	11'6" x 13'7"
En Suite	1450 x 2289 mm	4'9" x 7'6"
Bedroom 4	4150 x 2708 mm	13'7" x 8'11"



Second Floor

Bedroom 2	4150 x 3515 mm	13'7" x 11'6"
Bedroom 3	4150 x 3209 mm	13'7" x 10'6"
Bathroom	2130 x 1700 mm	7'0" x 5'7"

Key

B	Boiler	CYL	Cylinder	dw	Dishwasher space
ST	Store	wm	Washing machine space	◀▶	Dimension location

dwh.co.uk



DAVID WILSON HOMES
WHERE QUALITY LIVES

We are on the New Homes Quality Code register of registered developers. "We" refers to the Barratt Developments PLC group brands including Barratt London, Barratt Homes and David Wilson Homes. All images used are for illustrative purposes only. Floor plans are intended to give a general indication of the proposed floor layout only. The dimensions are accurate to within + or - 50mm but should not be used for carpet or flooring sizes, appliance spaces or items of furniture. Please ask our Sales Adviser for details of the treatments specified for individual plots. Individual features such as windows, brick and other materials' colours may vary, as may drainage, heating and electrical layouts. All images, photographs and dimensions are not intended to form part of any contract or warranty unless specifically incorporated in writing into the contract.

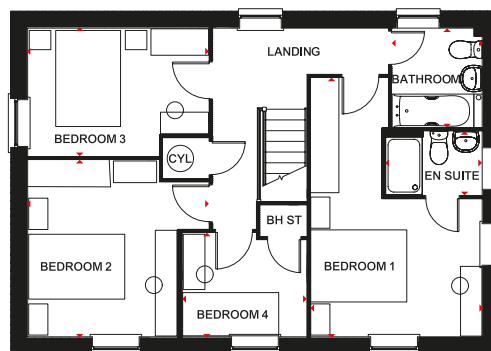
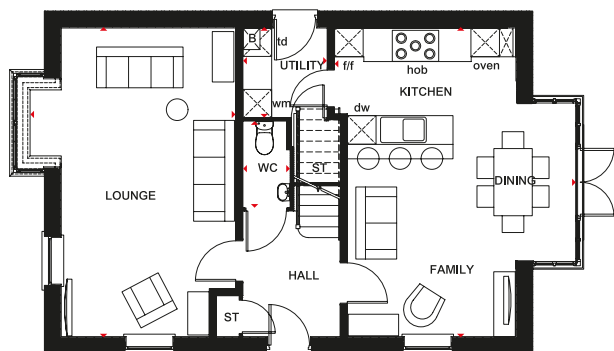
BDW001943/OCT22

THE CORNELL

FOUR BEDROOM HOME



This family home has a contemporary look, while inside, the large open-plan kitchen with its spacious dining and family areas is designed very much for modern living. An elegant full-glazed walk-in bay with French doors gives access to the garden and there's also a separate utility room. The bright and airy lounge, with an attractive bay window, is the perfect place to relax. Upstairs are three double bedrooms, the large main bedroom with en suite, a single bedroom and a family bathroom.



Ground Floor

Lounge	6427 x 4028 mm	21'1" x 13'2"
Kitchen/ Family/Dining	6427 x 5005 mm	21'1" x 16'5"
Utility	1860 x 1754 mm	6'1" x 5'9"
WC	1786 x 1014 mm	5'10" x 3'4"

First Floor

Bedroom 1	5388 x 3571 mm	17'8" x 11'8"
En Suite	2010 x 1324 mm	6'7" x 4'4"
Bedroom 2	3677 x 3756 mm	12'1" x 12'4"
Bedroom 3	3756 x 2661 mm	12'4" x 8'9"
Bedroom 4	2577 x 2160 mm	8'5" x 7'1"
Bathroom	2062 x 1875 mm	6'9" x 6'2"

Key

B Boiler	BH ST Bulkhead store	wm Washing machine space	dw Dishwasher space	♦♦ Dimension location
ST Store	CYL Cylinder	f/f Fridge/freezer space	td Tumble dryer space	

dwh.co.uk



DAVID WILSON HOMES
WHERE QUALITY LIVES

We are on the New Homes Quality Code register of registered developers. "We" refers to the Barratt Developments PLC group brands including Barratt London, Barratt Homes and David Wilson Homes. All images used are for illustrative purposes. Floor plans are intended to give a general indication of the proposed floor layout only. Dimensions are accurate to within + or - 50mm but should not be used for carpet or flooring sizes, appliance spaces or items of furniture. Please ask our Sales Adviser for details of the treatments specified for individual plots. Individual features such as windows, brick and other materials may vary, as may drainage, heating and electrical layouts. Images, photographs and dimensions are not intended to form part of any contract or warranty unless specifically incorporated in writing into the contract.

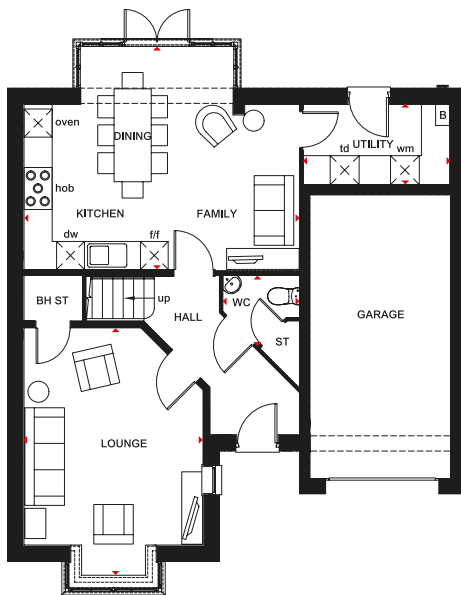
BDW001943/OCT22

THE EXETER

FOUR BEDROOM HOME

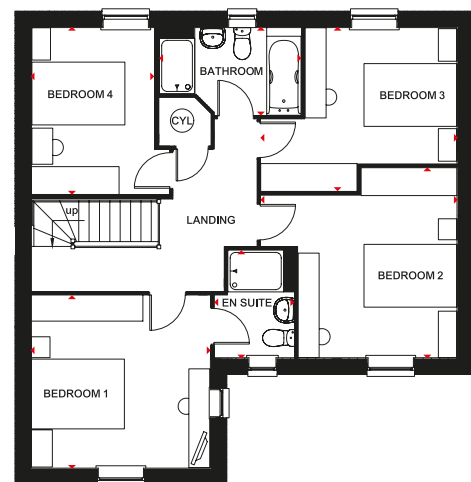


The Exeter's design reflects an intelligent use of space. A full-height glazed bay in the luxury fitted kitchen has French doors to the garden, allowing in plenty of natural light. The bright, open-plan kitchen includes dining and family areas and has an adjoining utility room. An attractive bay window makes the separate lounge a bright and pleasant place to relax. Meanwhile, on the first floor there are four good-sized double bedrooms, the main bedroom with en suite, and a large family bathroom. An integral garage completes this spacious family home.



Ground Floor

Lounge	5068 x 3850 mm	16'7" x 12'8"
Kitchen/Family/		
Dining	5832 x 4775 mm	19'2" x 15'8"
Utility	3148 x 1725 mm	10'4" x 5'8"
WC	1650 x 1484 mm	5'5" x 4'10"



First Floor

Bed 1	3850 x 3711 mm	12'8" x 12'2"
En Suite	2315 x 1711 mm	7'7" x 5'7"
Bed 2	4222 x 4088 mm	13'10" x 13'5"
Bed 3	4222 x 3525 mm	13'10" x 11'7"
Bed 4/Study	3611 x 2665 mm	11'10" x 8'9"
Bath	3046 x 1886 mm	10'0" x 6'2"

Key

B	Boiler	BH ST	Bulkhead store	f/f	Fridge/freezer space	dw	Dishwasher space	◀▶	Dimension location
ST	Store	CYL	Cylinder	wm	Washing machine space	td	Tumble dryer space		

dwh.co.uk



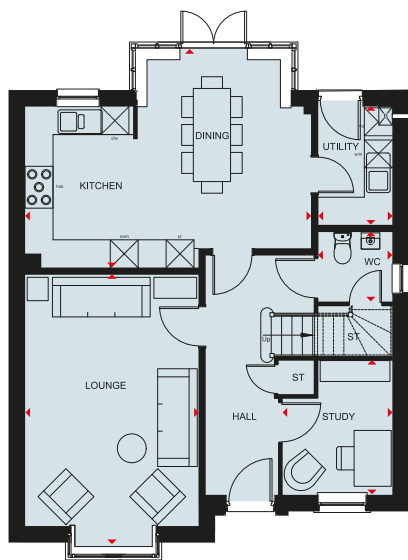
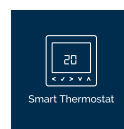
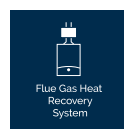
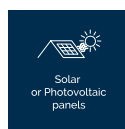
DAVID WILSON HOMES
WHERE QUALITY LIVES

We are on the New Homes Quality Code register of registered developers. "We" refers to the Barratt Developments PLC group brands including Barratt London, Barratt Homes and David Wilson Homes. All images used are for illustrative purposes only. Floor plans are intended to give a general indication of the proposed floor layout only. The dimensions are accurate to within + or - 50mm but should not be used for carpet or flooring sizes, appliance spaces or items of furniture. Please ask our Sales Adviser for details of the treatments specified for individual plots. Individual features such as windows, brick and other materials' colours may vary, as may drainage, heating and electrical layouts. All images, photographs and dimensions are not intended to form part of any contract or warranty unless specifically incorporated in writing into the contract.

BDW001943/OCT22

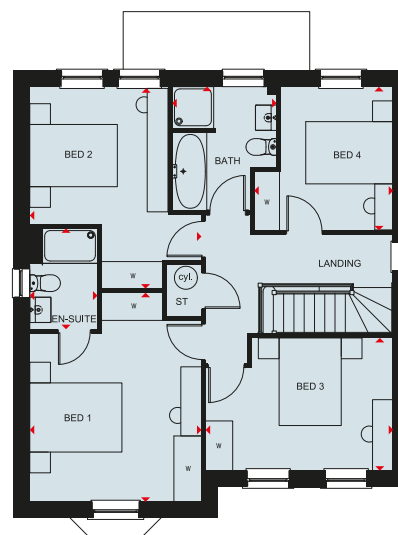
HOLDEN

FOUR BEDROOM DETACHED HOME



Ground Floor

Lounge	6110 x 3738mm	20' x 12'3"
Kitchen	6148 x 4718 mm	20'2" x 15'6"
Study	2886 x 2361 mm	9'6" x 7'9"
Utility	2545 x 1593 mm	8'4" x 5'3"
WC	1498 x 1593 mm	4'11" x 5'3"



First Floor

Bedroom 1	4543 x 3728 mm	14'11" x 12'3"
En Suite	2191 x 1471 mm	7'6" x 4'10"
Bedroom 2	4384 x 3728 mm	14'5" x 12'3"
Bedroom 3	4073 x 2886 mm	13'4" x 9'6"
Bedroom 4	3123 x 3084mm	10'3" x 10'11"
Bathroom	2691 x 2267 mm	8'10" x 7'5"

Key

B	Boiler	W	Wardrobe space	wm	Washing machine space	CYL	Cylinder	↗	Dimension location
ST	Store	f/f	Fridge/freezer space	dw	Dishwasher space	td	Tumble dryer		



Scan here for more details



DAVID WILSON HOMES

We are on the New Homes Quality Code register of registered developers. "We" refers to the Barratt Developments PLC group brands including Barratt London, Barratt Homes and David Wilson Homes. All images used are for illustrative purposes. The images and the dimensions given are illustrative for this house type and individual properties may differ. Please check with your Sales Adviser in respect of individual properties. We give maximum dimensions within each room which includes areas of fixtures and fittings including fitted furniture. These dimensions should not be used for carpet or flooring sizes, appliance spaces or items of furniture. All images, photographs, dimensions and energy efficiency features depicted are not intended to be relied upon for, nor to form part of, any contract unless specifically incorporated in writing into the contract.

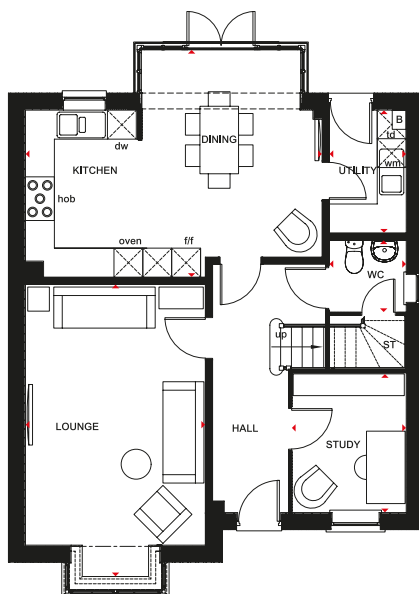
BDW004787/JUL24

THE HOLDEN

FOUR BEDROOM HOME



This stylish four bedroom detached home has no shortage of space. The bright, modern kitchen has been designed with an integrated dining areas, full-height glazed bay with French doors leading to the garden and an adjoining utility room, making it the true heart of the home. A generously proportioned lounge with full-height bay window provides a perfect place to relax while a study offers a handy work space. Upstairs a large main bedroom with en suite shower room is located at the front of the house and there are two further double bedrooms, plus a single bedroom and a family bathroom with bath and separate shower.

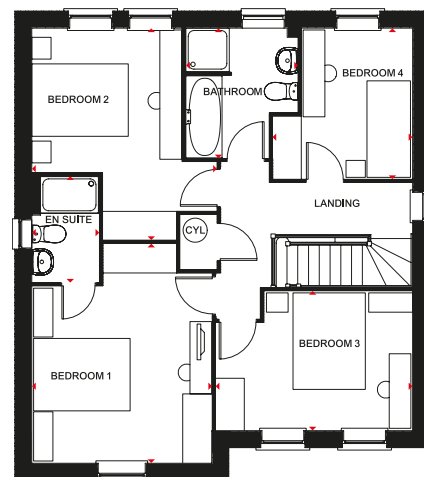


Ground Floor

Lounge	5827 x 3728 mm	19'11" x 12'3"
Kitchen/ Family/Dining	6147 x 4685 mm	20'2" x 15'4"
Study	2886 x 2361 mm	9'6" x 7'9"
Utility	2545 x 1593 mm	8'4" x 5'3"
WC	1593 x 1481 mm	5'3" x 4'10"

Key

B	Boiler	CYL	Cylinder	wm	Washing machine space	td	Tumble dryer space
ST	Store	f/f	Fridge/freezer space	dw	Dishwasher space	▶▶	Dimension location



First Floor

Bedroom 1	4543 x 3728 mm	14'11" x 12'3"
En suite	2190 x 1390 mm	7'2" x 4'7"
Bedroom 2	4384 x 3828 mm	14'5" x 12'7"
Bedroom 3	4073 x 2886 mm	13'4" x 9'6"
Bedroom 4	3120 x 2893 mm	10'3" x 9'6"
Bathroom	2689 x 2316 mm	8'10" x 7'7"

dwh.co.uk



DAVID WILSON HOMES
WHERE QUALITY LIVES

We are on the New Homes Quality Code register of registered developers. "We" refers to the Barratt Developments PLC group brands including Barratt London, Barratt Homes and David Wilson Homes. All images used are for illustrative purposes only. Floor plans are intended to give a general indication of the proposed floor layout only. The dimensions are accurate to within + or - 50mm but should not be used for carpet or flooring sizes, appliance spaces or items of furniture. Please ask our Sales Adviser for details of the treatments specified for individual plots. Individual features such as windows, brick and other materials' colours may vary, as may drainage, heating and electrical layouts. All images, photographs and dimensions are not intended to form part of any contract or warranty unless specifically incorporated in writing into the contract.

BDW001943/OCT22

CREATING A SUSTAINABLE COMMUNITY

WHERE FAMILIES AND NATURE CAN THRIVE

At David Wilson Homes, we do more than simply craft beautiful homes and desirable developments.

We design and build great places that meet the highest standards, and that promote sustainable, healthy and happy living for our customers.

We know we must give our customers confidence that their homes are designed and built to meet the challenges of the future. We do this through creating places where people and nature can thrive.



DAVID WILSON HOMES

WHERE QUALITY LIVES

dwh.co.uk