

WIGSTON MEADOWS

NEWTON LANE, WIGSTON, LEICESTERSHIRE LE18 3SH



3, 4 AND 5 BEDROOM HOMES



AWARD-WINNING CUSTOMER SERVICE AND QUALITY

WITH YOU EVERY STEP OF THE WAY

Barratt Homes has years of experience building thoughtfully designed, high quality homes. We've repeatedly been awarded 5 stars by the Home Builders Federation, year after year. And that's not all. Our homes come with an NHBC Buildmark Warranty which gives you a 10 year structural warranty and a 2 year fixtures and fittings warranty as standard. This is just one of the added benefits of buying a new home.

We do all we can to make moving easy, putting people in touch with dedicated experts throughout the journey, which is why for more than 50 years, we have earned ourselves an enviable reputation for excellence.

At Barratt we build every type of home for every type of home buyer, in great locations the length and breadth of the country. Whether you're putting your first foot on the property ladder, moving up to a larger home or even downsizing, Barratt can help you find the home that suits you perfectly.



OUTSTANDING DESIGN

**BARRATT HOMES ARE BUILT AROUND
THE WAY YOU WANT TO LIVE**

Careful consideration and attention to detail goes into every home we build, and our homes are flexible and adaptable to suit every lifestyle. Open plan living spaces are integral to our design, helping you make the most of space and natural light, and allowing every room to be enjoyed to its maximum potential.

We also know how vital outdoor space is in creating places people love to live in. Whether it's gardens or landscaped areas, we make sure there's plenty surrounding the homes we build, for the whole neighbourhood to enjoy.





STUNNING HOMES IN A GREAT LOCATION

**3, 4 AND 5 BEDROOM HOMES IN WIGSTON
FROM BRITAIN'S LEADING HOUSEBUILDER**

Positioned on the rural edge of the charming Leicestershire town of Wigston, Wigston Meadows will feature a collection of 3, 4 and 5 bedroom homes that have been designed with the demands of daily life in mind.

With plenty of green, open spaces surrounding your new home, you will enjoy spending time outdoors. Wigston is also home to a number of schools for children of all ages, fantastic transport links to surrounding areas by road and rail and a host of amenities. For working professionals and families alike, Wigston Meadows will be the ideal place to call home.





LOCAL AREA

DISCOVER WIGSTON

Wigston Meadows offers a semi-rural Leicestershire lifestyle while also providing you with easy access to surrounding towns and cities. Your new home is just five minutes by car from Wigston town centre where you will find a family butchers with locally reared produce, a number of cafés, coffee shops and, for when you want a weekend treat, a fish and chip shop plus a number of local pubs for you to become acquainted with.

You will benefit from excellent transport links. There is the A6 travelling north to Leicester city centre and south towards the quaint town of Market Harborough. You can also easily access junction 21 of the M1 travelling both northbound and southbound, and junction 3 of the M69 travelling towards Coventry.

OUT AND ABOUT

THERE'S PLENTY TO SEE AND DO

Local amenities

Just a short drive from your new home at Wigston Meadows you will find a Tesco superstore and a Sainsbury's for all your weekly essentials. Wigston is also home to a post office, doctor's surgery and a number of dental practices. For fitness enthusiasts, Wigston has a number of gyms and leisure facilities, offering a range of classes, spa facilities and swimming pools.

For families with children, Wigston has a number of nurseries and schools and De Montfort University and the University of Leicester are just a 20-minute drive away from your new home.

Out with the family

Living at Wigston Meadows, you are never too far from the hustle and bustle of nearby cities. Just a short drive from your new home is Leicester city centre, which is home to Highcross Shopping Centre and its collection of high-street stores. You will also find the Showcase Cinema De Lux showing all the latest releases.

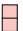














Fun with friends

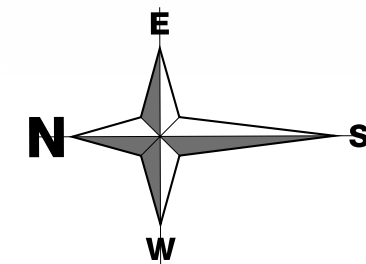
In Wigston you will find a number of restaurants and bars where you can enjoy spending time with friends at the weekend. If you wanted to leave the car at home and make a night of it, South Wigston train station offers direct trains to Leicester and Birmingham New Street in under an hour.



WIGSTON MEADOWS

DEVELOPMENT LAYOUT

- | | | |
|---|-----------------------|----------------|
|  | Kenley | 2 bedroom home |
|  | Denford | 2 bedroom home |
|  | Brentford | 3 bedroom home |
|  | Denby | 3 bedroom home |
|  | Ellerton | 3 bedroom home |
|  | Lutterworth | 3 bedroom home |
|  | Ennerdale | 3 bedroom home |
|  | Maidstone | 3 bedroom home |
|  | Moresby | 3 bedroom home |
|  | Alderney | 4 bedroom home |
|  | Hale | 4 bedroom home |
|  | Haversham | 4 bedroom home |
|  | Hesketh | 4 bedroom home |
|  | Kingsley | 4 bedroom home |
|  | Kingsville | 4 bedroom home |
|  | Radleigh | 4 bedroom home |
|  | Fircroft | 6 bedroom home |
|  | Affordable Housing | |
|  | Bat Box | |
| BCP | Bin Collection Point | |
| BS | Bin Store | |
| V | Visitor Parking Space | |



barratthomes.co.uk

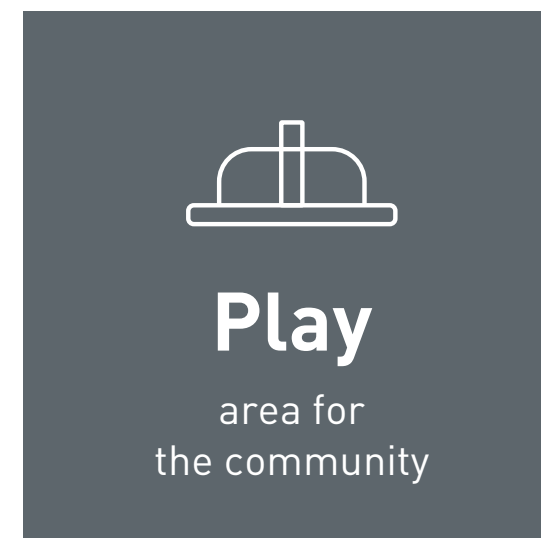
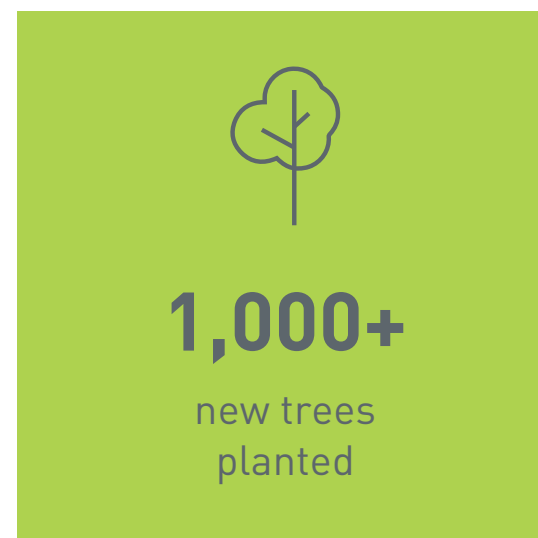
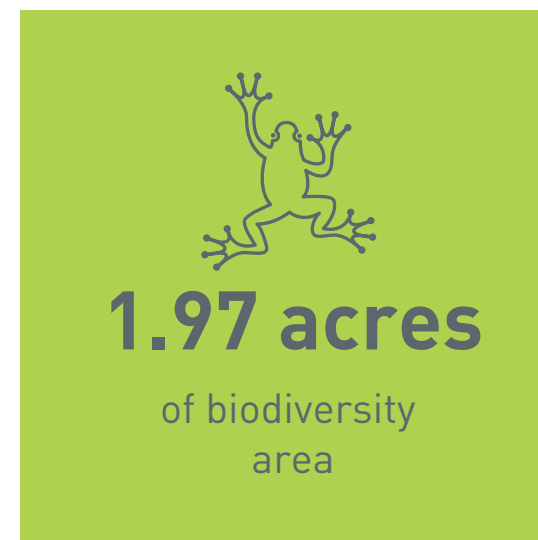


CREATING A SUSTAINABLE COMMUNITY WHERE FAMILIES AND NATURE CAN THRIVE

At Barratt Homes, we do more than simply craft beautiful homes and desirable developments.

We design and build great places that meet the highest standards, and that promote sustainable, healthy and happy living for our customers.

We know we must give our customers confidence that their homes are designed and built to meet the challenges of the future. We do this through creating places where people and nature can thrive.

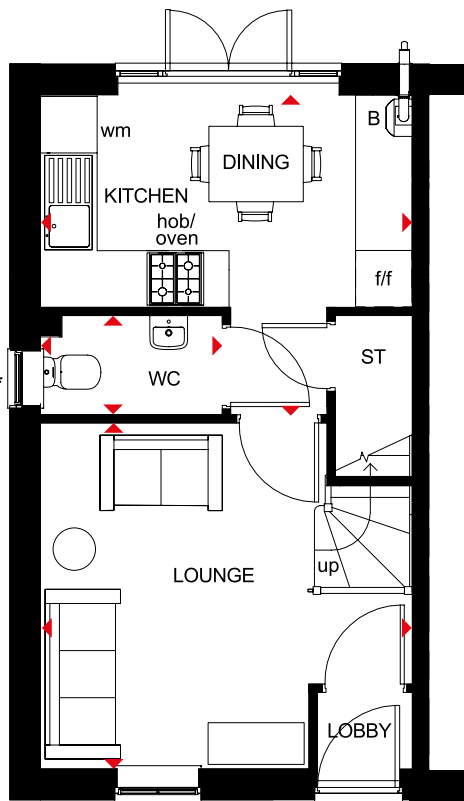


KENLEY

2 BEDROOM HOME



- Natural light floods through oversized windows in this two bedroom home
- French doors in the open-plan kitchen and dining area lead to the garden
- A front-aspect lounge and convenient storage space create a great place for modern living
- On the first floor are two double bedrooms and a family bathroom

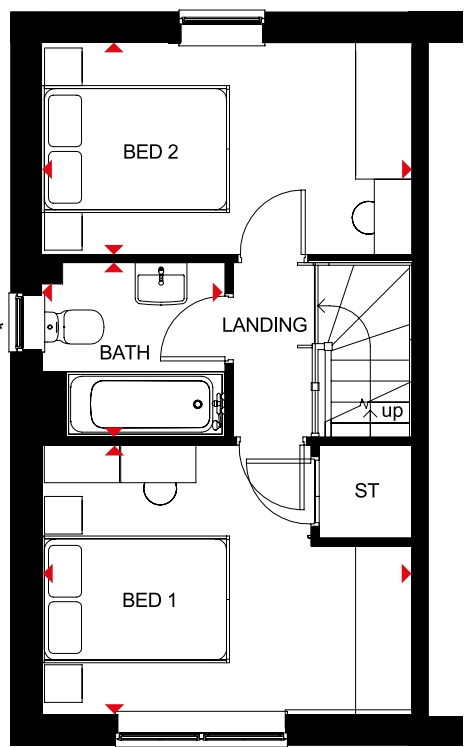


Ground Floor

Lounge	3943 x 3668mm	12'11" x 12'0"
Kitchen/Dining	3943 x 3454mm	12'11" x 11'4"
WC	1888 x 1050mm	6'2" x 3'5"

(Approximate dimensions)

* Window may be omitted on certain plots. Speak to a Sales Adviser for details on individual plots.



First Floor

Bedroom 1	3943 x 2865mm	12'11" x 9'5"
Bedroom 2	3943 x 2316mm	12'11" x 7'7"
Bathroom	1953 x 1853mm	6'5" x 6'1"

(Approximate dimensions)

* Window may be omitted on certain plots. Speak to a Sales Adviser for details on individual plots.

KEY

B	Boiler
ST	Store
wm	Washing machine space

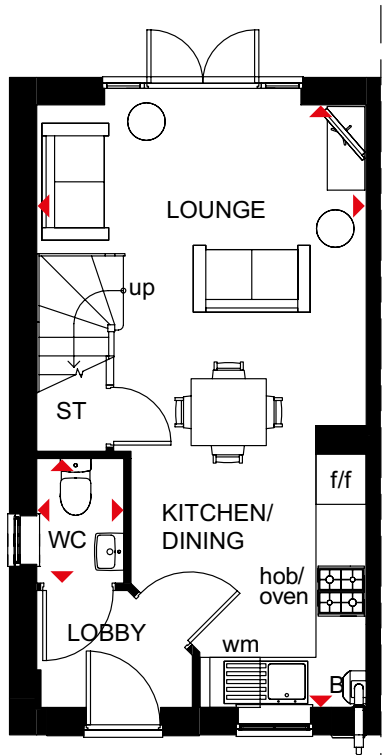
f/f Fridge/freezer space
◀▶ Dimension location

DENFORD

2 BEDROOM SEMI-DETACHED HOME



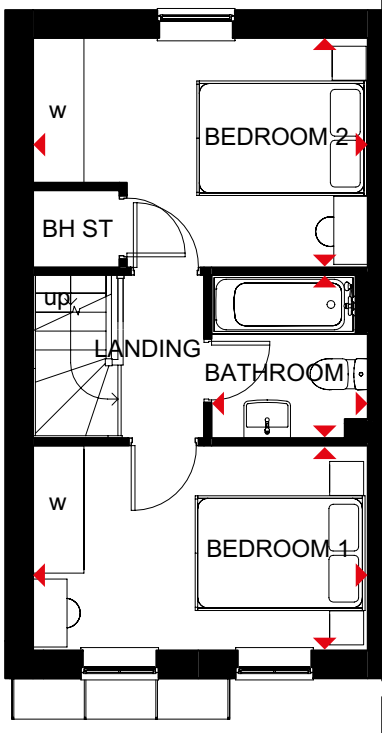
- Free-flowing living space creates a flexible home, ideal for first-timers and downsizers
- French doors lead to the rear garden giving the open-plan lounge, dining area and fitted kitchen a bright and airy feeling
- Upstairs are two double bedrooms and the bathroom



Ground Floor

Kitchen/ Dining/Lounge	3943 x 7210mm	12'11" x 23'8"
WC	1040 x 1490mm	3'5" x 4'11"

(Approximate dimensions)



First Floor

Bedroom 1	3943 x 2412mm	12'11" x 7'11"
Bedroom 2	3943 x 2702mm	12'11" x 8'10"
Bathroom	1840 x 1920mm	6'0" x 6'4"

(Approximate dimensions)

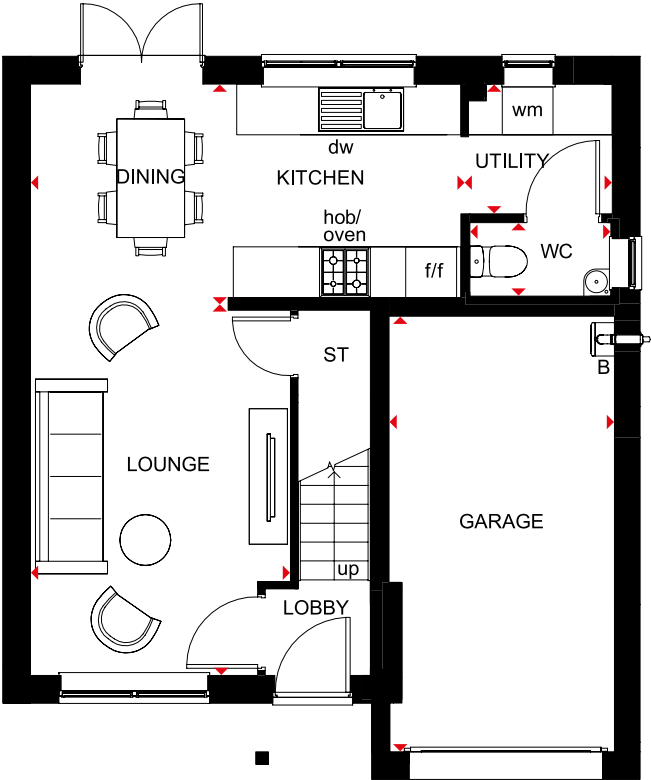
KEY	B	Boiler	wm	Washing machine space	W	atWardrobe space
	ST	Store	f/f	Fridge/freezer space	◀▶	Dimension location
	BH ST	Bulkhead store	dw	Dishwasher space		

DENBY

3 BEDROOM DETACHED HOME



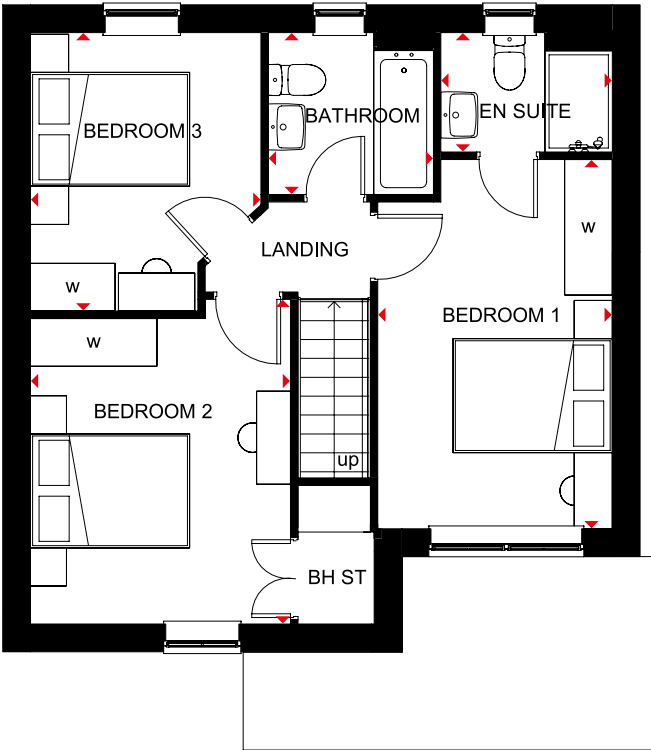
- Free-flowing living space creates a flexible, family home
- Large windows and French doors to the rear garden give the open-plan lounge, dining area, kitchen and utility a bright and airy feeling
- Integral garage adds convenience and security
- Upstairs are three double bedrooms – the main bedroom with en suite – and the family bathroom



Ground Floor

Lounge	3072 x 4462mm	10'1" x 14'8"
Kitchen	2688 x 2523mm	8'10" x 8'3"
Dining	2397 x 2523mm	7'10" x 8'3"
Utility	1789 x 1533mm	5'10" x 5'0"
WC	1701 x 903mm	5'7" x 3'0"
Garage	2663 x 5142mm	8'9" x 16'10"

(Approximate dimensions)



First Floor

Bedroom 1	2770 x 4361mm	9'1" x 14'4"
En Suite	2026 x 1412mm	6'8" x 4'8"
Bedroom 2	3072 x 3834mm	10'1" x 12'7"
Bedroom 3	2722 x 3289mm	8'11" x 10'9"
Bathroom	1950 x 1913mm	6'5" x 6'3"

(Approximate dimensions)

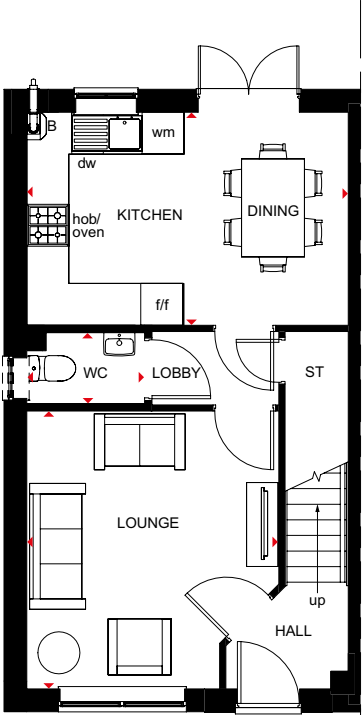
KEY	B	Boiler	wm	Washing machine space	w	Wardrobe space
	ST	Store	f/f	Fridge/freezer space	◀▶	Dimension location
	BH ST	Bulkhead store	dw	Dishwasher space		

ELLERTON

3 BEDROOM SEMI-DETACHED HOME



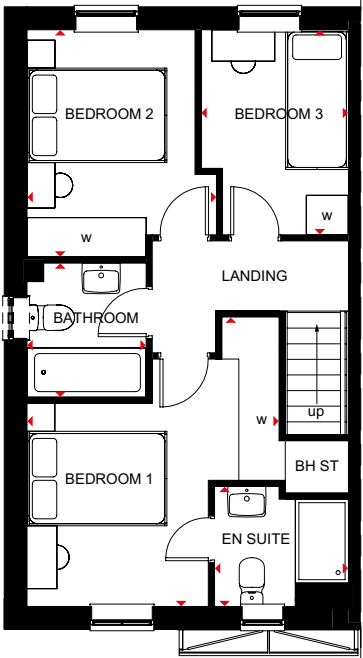
- Bright, practical home, ideal for modern family living
- Large, open-plan kitchen with ample dining space has French doors leading to the rear garden
- Good-sized lounge for all the family to relax in
- Upstairs, the main bedroom has an en suite shower room, and there is a further double bedroom, a single bedroom and a family bathroom



Ground Floor

Lounge	3605 x 3972mm	11'10" x 13'0"
Kitchen/Dining	4598 x 3048mm	15'1" x 10'0"
WC	1703 x 1050mm	5'7" x 3'5"

[Approximate dimensions]



First Floor

Bedroom 1	3605 x 4138mm	11'10" x 13'7"
En Suite	1918 x 1716mm	6'4" x 5'8"
Bedroom 2	2708 x 3250mm	8'11" x 10'8"
Bedroom 3	2109 x 2932mm	6'11" x 9'7"
Bathroom	1703 x 1917mm	5'7" x 6'3"

[Approximate dimensions]

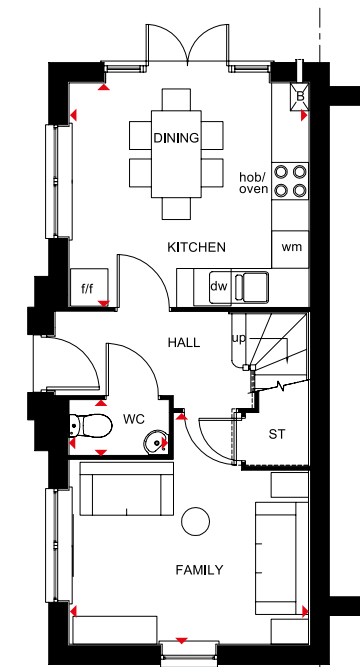
KEY	B	Boiler	wm	Washing machine space	w	Wardrobe space
	ST	Store	f/f	Fridge/freezer space	◀▶	Dimension location
	BH ST	Bulkhead store	dw	Dishwasher space		

BRENTFORD

3 BEDROOM HOME



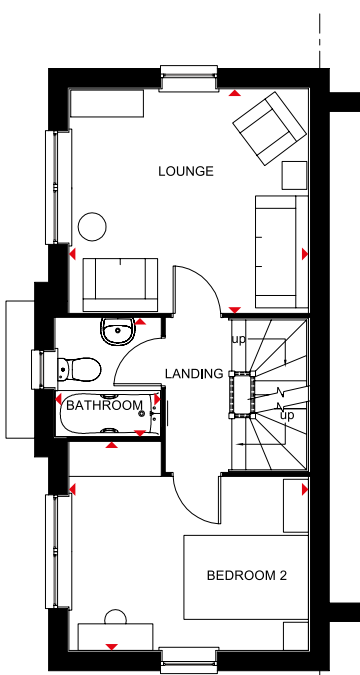
- Bright family home designed over three storeys
- Open-plan kitchen with dining area and French doors to the garden, and a separate family room are on the ground floor
- The first floor has a dual-aspect lounge, one double bedroom and the family bathroom
- Two double bedrooms, the main bedroom with dual-access en suite, are on the top floor



Ground Floor

Kitchen/Dining	3860 x 3597mm	12'8" x 11'10"
Family Room	3860 x 3702mm	12'8" x 12'2"
WC	1601 x 887mm	5'3" x 2'11"

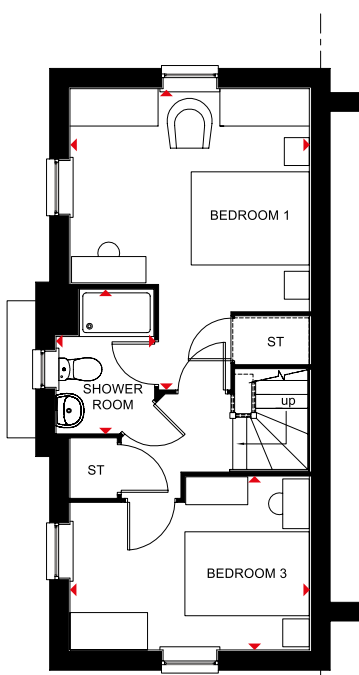
(Approximate dimensions)



First Floor

Lounge	3860 x 3597mm	12'8" x 11'10"
Bedroom 2	3860 x 3313mm	12'8" x 10'10"
Bathroom	1867 x 1701mm	6'2" x 5'7"

(Approximate dimensions)



Second Floor

Bedroom 1	4832 x 3860mm	15'10" x 12'8"
Bedroom 3	3860 x 2800mm	12'8" x 9'2"
Shower Room	2315 x 1576mm	7'7" x 5'2"

(Approximate dimensions)

KEY B Boiler
ST Store
wm Washing machine space

f/f Fridge/freezer space
dw Dishwasher space
◀▶ Dimension location

3 BEDROOM DETACHED HOME



-
- A detailed floor plan of a 2-bedroom house. The layout includes a large lounge with a sofa and two armchairs, a dining area with a table and chairs, a kitchen with an oven, hob, and sink, a bathroom (WC), and a staircase leading up. The plan is oriented with the entrance at the top right. Red arrows indicate the flow of traffic through the rooms. The rooms are labeled: LOUNGE, DINING, KITCHEN, WC, ST (stairs), and HALL. The kitchen area includes labels for 'oven', 'hob', 'wm' (washing machine), and 'dw' (dishwasher). The staircase is labeled 'ST' and 'up'.

Lounge	5385 x 3045mm	17'8" x 10'0"
Kitchen/Dining	4274 x 5385mm	14'0" x 17'8"
WC	1028 x 1441mm	3'4" x 4'9"

This floor plan shows a 3-bedroom house with a central landing. The layout includes:

- Bedrooms:** Three bedrooms (BED 1, BED 2, BED 3) are located around the perimeter. BED 1 is on the left, BED 2 is on the right, and BED 3 is at the bottom right.
- Bathroom:** A central bathroom (BATH) is located near the landing.
- En Suite:** An en suite (EN SUITE) is located adjacent to BED 1.
- Landing:** A central landing (LANDING) provides access to the bedrooms, bathroom, and en suite.
- Staircase:** A staircase (ST) is located near the landing, leading to the upper floor.
- Entrance:** The entrance is located at the bottom left, leading into the landing area.

Bedroom 1	3107 x 3599mm	10'2" x 11'10"
En Suite	1648 x 2159mm	5'5" x 7'1"
Bedroom 2	3404 x 3163mm	11'2" x 10'5"
Bedroom 3	3540 x 2134mm	11'7" x 7'0"
Bathroom	2519 x 1958mm	8'3" x 6'5"

KEY	ST	Store	dw	Dishwasher space
	wm	Washing machine space	◀▶	Dimension location
	f/f	Fridge/freezer space		



BARRATT
HOMES

barratthomes.co.uk

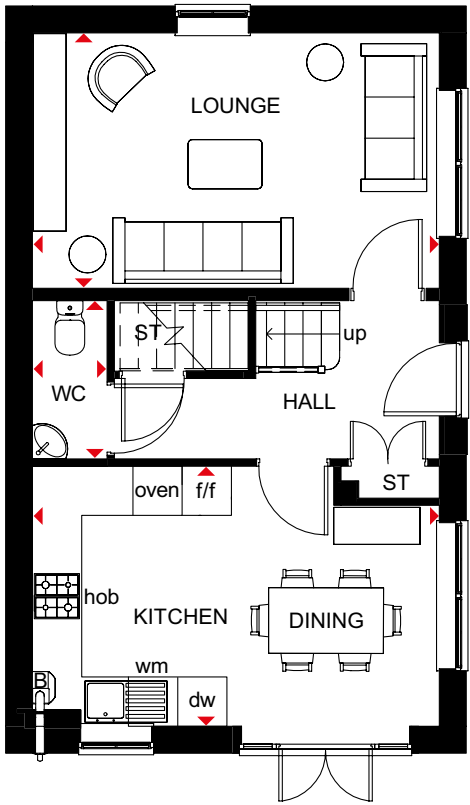
All images used are for illustrative purposes. These and the dimensions given are illustrative for this house type and individual properties may differ. Please check with your Sales Adviser in respect of individual properties. We give maximum dimensions within each room which includes areas of fixtures and fittings including fitted furniture. These dimensions should not be used for carpet or flooring sizes, appliance spaces or items of furniture. All images, photographs and dimensions are not intended to be relied upon for, nor to form part of, any contract unless specifically incorporated in writing into the contract.

ENNERDALE DETACHED

3 BEDROOM DETACHED HOME



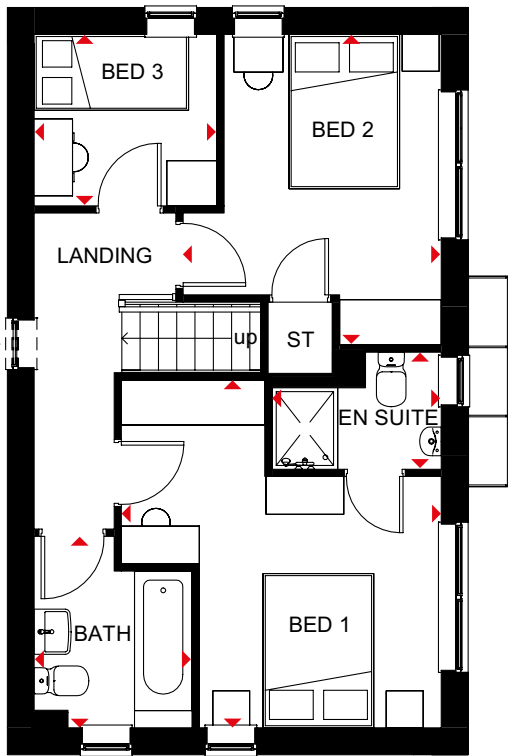
- Light flows into this attractive three bedroom detached home through oversized windows
- A dual-aspect lounge and bright, fully fitted kitchen with dining area opening onto the garden provide space that's ideal for modern living
- Upstairs are two spacious, dual-aspect double bedrooms, the main bedroom with en suite, a single bedroom and family bathroom



Ground Floor

Lounge	4960 x 3112mm	16'3" x 10'3"
Kitchen/Dining	4960 x 3170mm	16'3" x 10'5"
WC	1929 x 911mm	6'4" x 3'0"

[Approximate dimensions]



First Floor

Bedroom 1	4239 x 3898mm	13'11" x 12'9"
En Suite	2061 x 1427mm	6'9" x 4'8"
Bedroom 2	3783 x 3145mm	12'5" x 10'4"
Bedroom 3	2227 x 2089mm	7'4" x 6'10"
Bathroom	2334 x 1924mm	7'8" x 6'4"

[Approximate dimensions]

* Window may be omitted on certain plots. Speak to a Sales Adviser for details on individual plots.

KEY B Boiler
ST Store
wm Washing machine space

f/f Fridge/freezer space
dw Dishwasher space
◀▶ Dimension location

barratthomes.co.uk



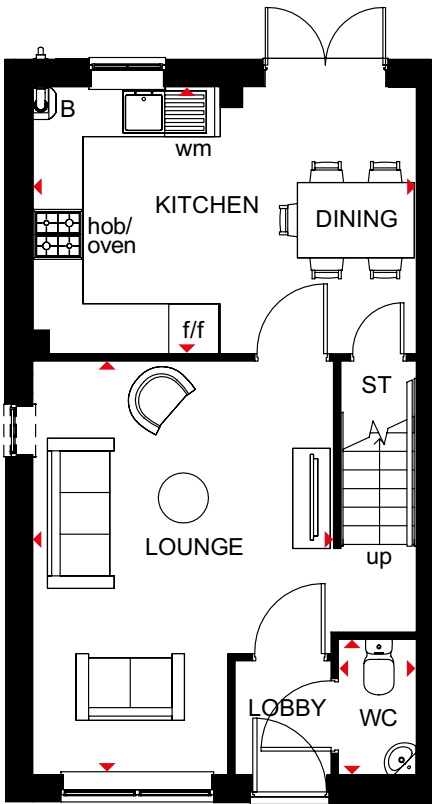
All images used are for illustrative purposes. These and the dimensions given are illustrative for this house type and individual properties may differ. Please check with your Sales Adviser in respect of individual properties. We give maximum dimensions within each room which includes areas of fixtures and fittings including fitted furniture. These dimensions should not be used for carpet or flooring sizes, appliance spaces or items of furniture. All images, photographs and dimensions are not intended to be relied upon for, nor to form part of, any contract unless specifically incorporated in writing into the contract.

MAIDSTONE

3 BEDROOM SEMI-DETACHED HOME



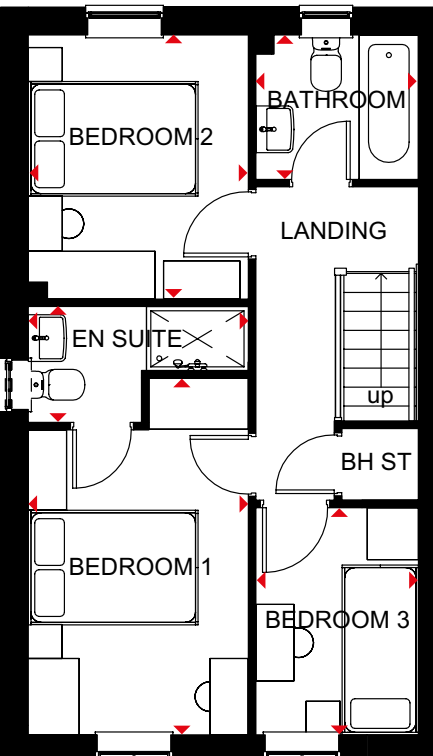
- An ideal family home designed with plenty of space for modern living
- The ground floor comprises a good-sized lounge and an open-plan kitchen with dining area and French doors leading to the garden
- The first floor has two double bedrooms – the generous main bedroom with en suite – a single bedroom and family bathroom



Ground Floor

Lounge	4598 x 4955mm	15'1" x 16'3"
Kitchen/Dining	4598 x 3202mm	15'1" x 10'6"
WC	935 x 1620mm	3'1" x 5'4"

[Approximate dimensions]



First Floor

Bedroom 1	2592 x 4204mm	8'6" x 13'10"
En Suite	2592 x 1365mm	8'6" x 4'6"
Bedroom 2	2592 x 3112mm	8'6" x 10'3"
Bedroom 3	1918 x 2676mm	6'4" x 8'9"
Bathroom	1918 x 1702mm	6'4" x 5'7"

[Approximate dimensions]

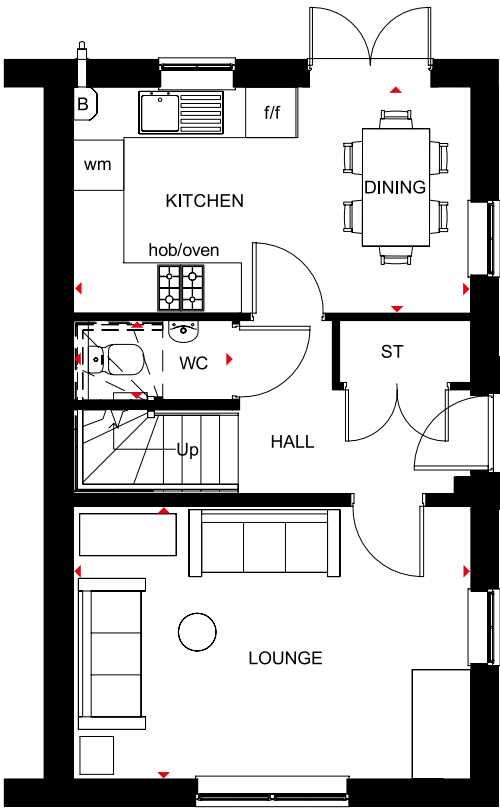
KEY	B	Boiler	wm	Washing machine space
	ST	Store	f/f	Fridge/freezer space
	BH ST	Bulhead store	◀▶	Dimension location

MORESBY

3 BEDROOM SEMI-DETACHED HOME



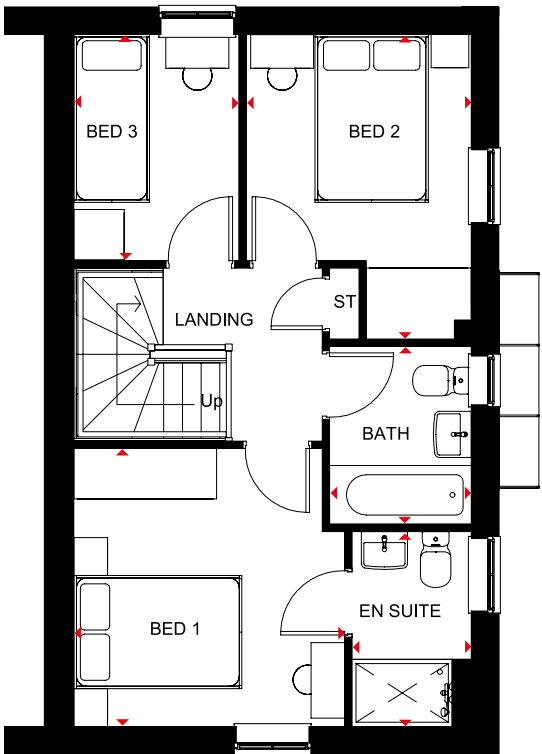
- A bright family home full of light and plenty of space
- The ground floor comprises a dual-aspect lounge and an open-plan kitchen with dining area opening onto the garden
- The first floor accommodates two double bedrooms, the main bedroom with en suite, a single bedroom and family bathroom



Ground Floor

Lounge	4737 x 3250mm	15'6" x 10'8"
Kitchen/Dining	4737 x 2696mm	15'6" x 8'10"
WC	1891 x 945mm	6'2" x 3'1"

(Approximate dimensions)



First Floor

Bedroom 1	3229 x 3312mm	10'7" x 10'10"
En Suite	2322 x 1421mm	7'7" x 4'8"
Bedroom 2	2682 x 3628mm	8'10" x 11'11"
Bedroom 3	2696 x 1968mm	8'10" x 6'5"
Bathroom	2120 x 1688mm	6'11" x 5'6"

(Approximate dimensions)

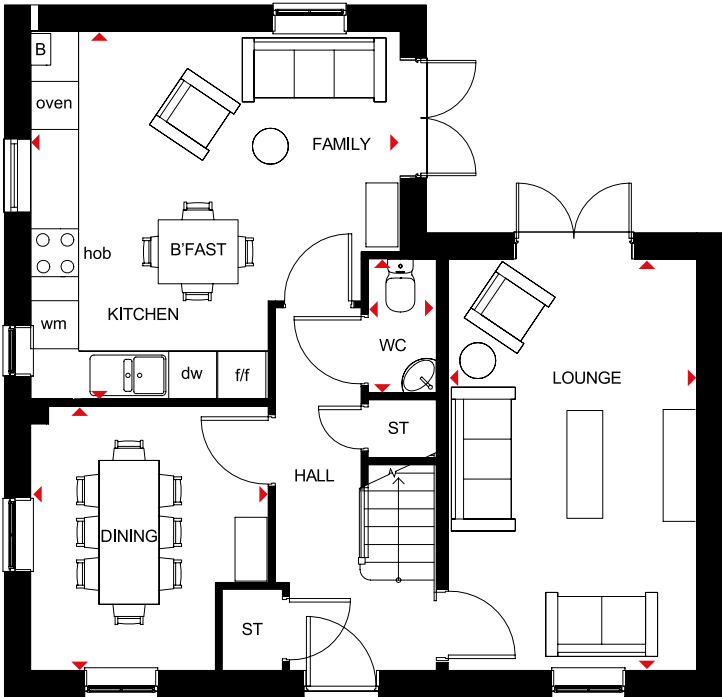
KEY	B	Boiler	f/f	Fridge/freezer space
	ST	Store	◀▶	Dimension location
	wm	Washing machine space		

ALDERNEY

4 BEDROOM DETACHED HOME



- A large fitted kitchen with family and breakfast areas provides this spacious home with the ideal hub for all the family
- French doors leading to the rear garden from both the kitchen and the separate lounge give it a bright and airy feeling, and there is a separate dual-aspect dining room
- Upstairs are three double bedrooms, the main bedroom with en suite, a single bedroom and a family bathroom



Ground Floor

Lounge	5148 x 3110mm	16'11" x 10'2"
Kitchen/Family/Breakfast	4623 x 4603mm	15'2" x 15'1"
Dining	3307 x 2972mm	10'10" x 9'9"
WC	1675 x 853mm	5'6" x 2'10"

(Approximate dimensions)



First Floor

Bedroom 1	4623 x 3104mm	15'2" x 10'2"
En Suite	2075 x 1191mm	6'10" x 3'11"
Bedroom 2	4523 x 3115mm	14'10" x 10'3"
Bedroom 3	3724 x 3115mm	12'3" x 10'3"
Bedroom 4	2275 x 2163mm	7'6" x 7'1"
Bathroom	2075 x 1702mm	6'10" x 5'7"

(Approximate dimensions)

KEY B Boiler
ST Store
wm Washing machine space

f/f Fridge/freezer space
dw Dishwasher space
◀▶ Dimension location

barratthomes.co.uk



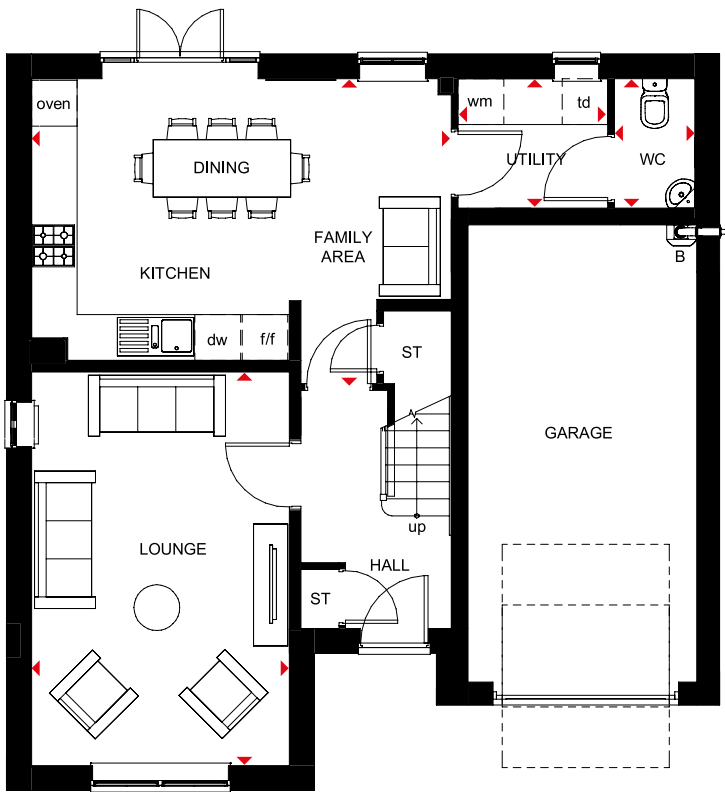
All images used are for illustrative purposes. These and the dimensions given are illustrative for this house type and individual properties may differ. Please check with your Sales Adviser in respect of individual properties. We give maximum dimensions within each room which includes areas of fixtures and fittings including fitted furniture. These dimensions should not be used for carpet or flooring sizes, appliance spaces or items of furniture. All images, photographs and dimensions are not intended to be relied upon for, nor to form part of, any contract unless specifically incorporated in writing into the contract.

HALE

4 BEDROOM DETACHED HOME



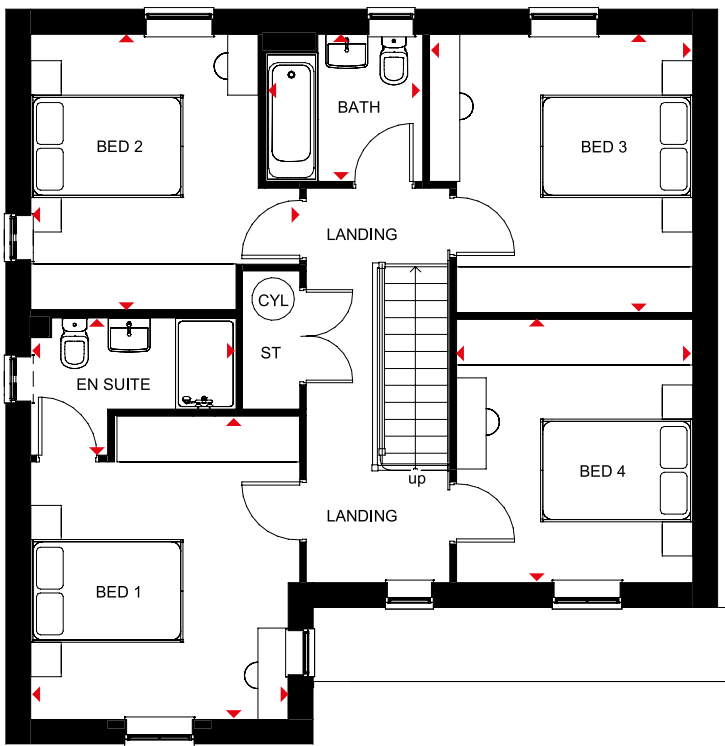
- Ideal family home designed for modern living with flexible, open-plan kitchen, dining and family areas leading to the rear garden
- Spacious lounge provides the perfect place for all the family to relax in
- Separate utility room and integral garage
- First floor comprises four double bedrooms, the main bedroom with en suite, and family bathroom



Ground Floor

Lounge	5165 x 3385mm	16'11" x 11'1"
Kitchen/Dining/ Family Area	4000 x 5511mm	13'1" x 18'1"
Utility	1696 x 1966mm	5'7" x 6'5"
WC	1696 x 1053mm	5'7" x 3'5"

(Approximate dimensions)



First Floor

Bedroom 1	3995 x 3536mm	13'1" x 11'7"
En suite	1804 x 2698mm	5'11" x 8'10"
Bedroom 2	3622 x 3536mm	11'11" x 11'7"
Bedroom 3	3463 x 3660mm	11'4" x 12'0"
Bedroom 4	3463 x 3107mm	11'4" x 10'2"
Bathroom	1939 x 2076mm	6'4" x 6'10"

(Approximate dimensions)

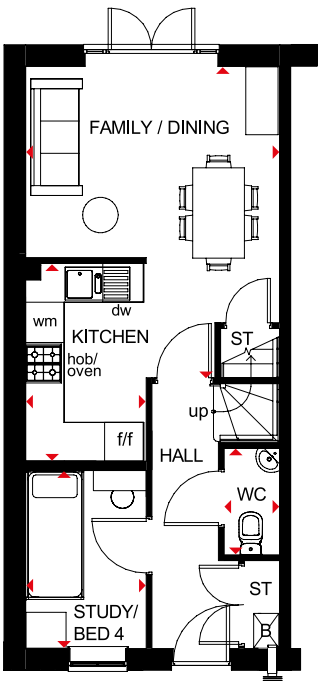
KEY	B	Boiler	wm	Washing machine space	td	Tumble dryer space
	ST	Store	f/f	Fridge/freezer space	◀▶	Dimension location
	CYL	Cylinder	dw	Dishwasher space		

HAVERSHAM

4 BEDROOM SEMI-DETACHED HOME



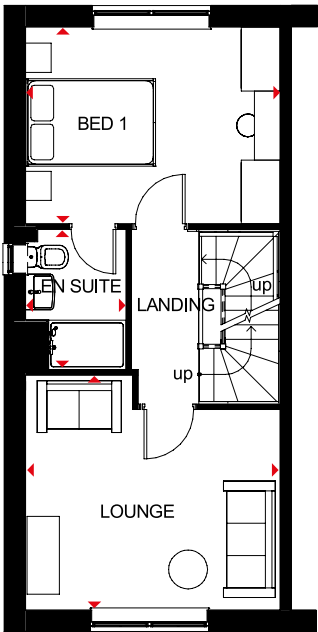
- An attractive family home designed over three floors with oversized windows providing a bright and airy feeling
- The ground floor has a fitted kitchen with family and dining areas and French doors leading to the garden, and a single bedroom or study
- The spacious lounge is upstairs on the first floor, along with the main bedroom with en suite
- The second floor has two double bedrooms and a bathroom



Ground Floor

Family/Dining	4818 x 3935mm	15'10" x 12'11"
Kitchen	1865 x 3060mm	6'1" x 10'0"
WC	861 x 1649mm	2'10" x 5'5"
Study/ Bedroom 4	1865 x 2751mm	6'1" x 9'0"

(Approximate dimensions)

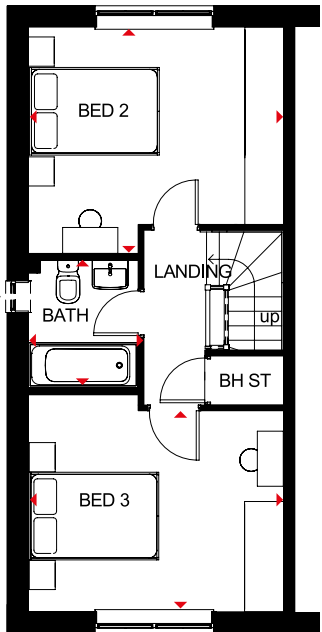


First Floor

Lounge	3935 x 3630mm	12'11" x 11'11"
Bedroom 1	3935 x 3042mm	12'11" x 10'0"
En Suite	1551 x 2163mm	5'1" x 7'1"

(Approximate dimensions)

*Window may be omitted on certain plots. Speak to a Sales Adviser for details on individual plans.



Second Floor

Bedroom 2	3935 x 3488mm	12'11" x 11'5"
Bedroom 3	3935 x 3345mm	12'11" x 11'0"
Bathroom	1695 x 1963mm	5'7" x 6'5"

(Approximate dimensions)

*Window may be omitted on certain plots. Speak to a Sales Adviser for details on individual plans.

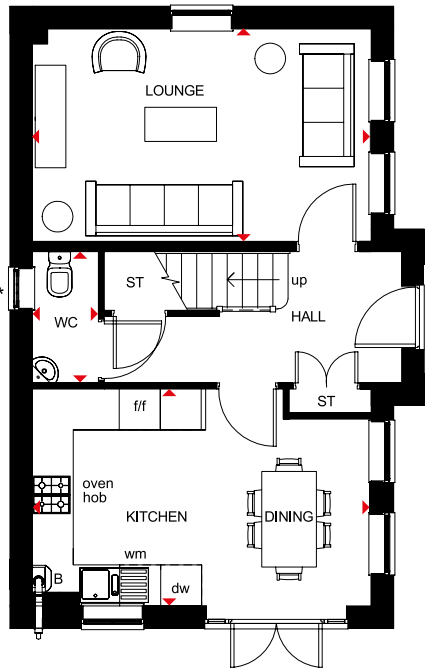
KEY	B	Boiler	wm	Washing machine space	◄►	Dimension location
	ST	Store	f/f	Fridge/freezer space		
	BH ST	Bulkhead store	dw	Dishwasher space		

HESKETH

4 BEDROOM DETACHED HOME



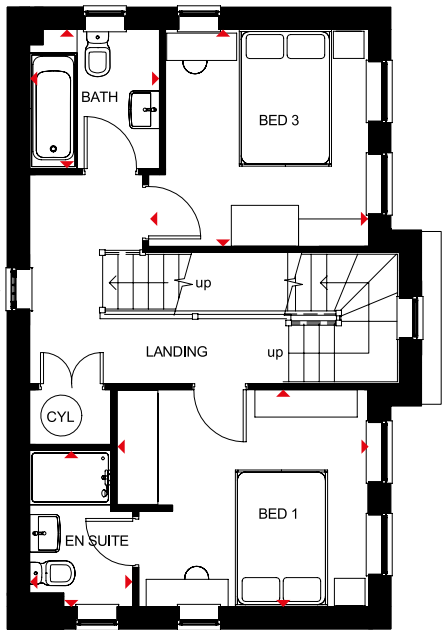
- A spacious family home designed over three floors
- Bright, open-plan fitted kitchen with dining area leads to the garden, while a spacious lounge provides room to relax
- Upstairs are two double bedrooms, the main bedroom with en suite, and the family bathroom
- Two further double bedrooms and a shower room are on the second floor



Ground Floor

Lounge	4963 x 3113mm	16'3" x 10'3"
Kitchen/Dining	4963 x 3175mm	16'3" x 10'5"
WC	1923 x 925mm	6'4" x 3'0"

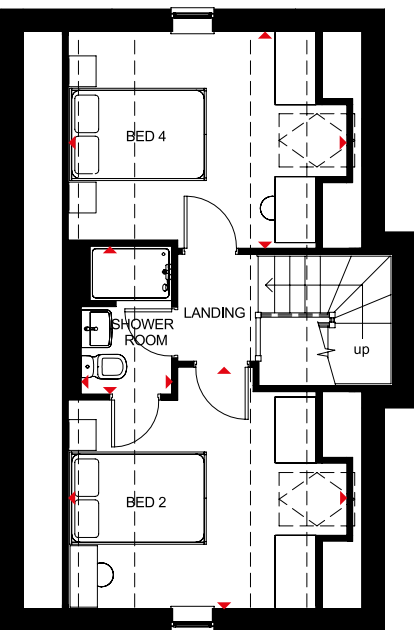
[Approximate dimensions]
* Window may be omitted on certain plots. Speak to a Sales Adviser for details on individual plots.



First Floor

Bedroom 1	3684 x 3175mm	12'1" x 10'5"
En suite	2287 x 1511mm	7'6" x 4'11"
Bedroom 3	3220 x 3175mm	10'7" x 10'5"
Bathroom	2038 x 1903mm	6'8" x 6'3"

[Approximate dimensions]
* Window may be omitted on certain plots. Speak to a Sales Adviser for details on individual plots.



Second Floor

Bedroom 2	4076 x 3532mm*	13'4" x 11'7"*
Bedroom 4	4076 x 3175mm*	13'4" x 10'5"*
Shower Room	2168 x 1323mm	7'1" x 4'4"

[Approximate dimensions]
* Overall floor dimension includes lower ceiling areas.

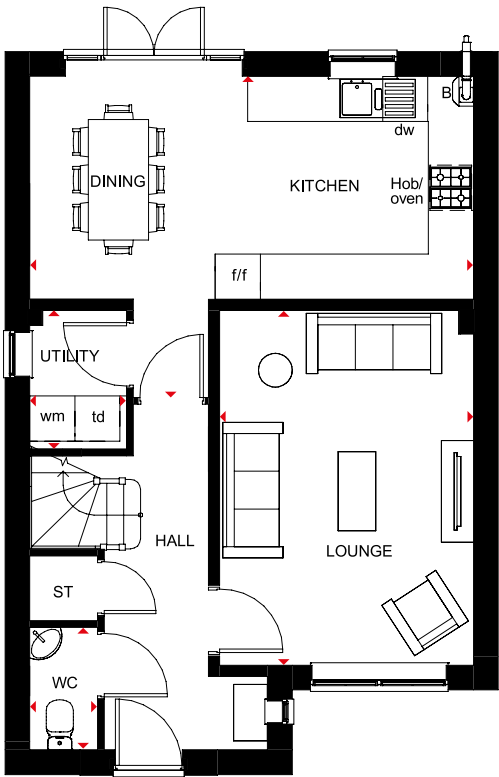
KEY	B	Boiler	wm	Washing machine space	◀ ▶	Dimension location
	ST	Store	f/f	Fridge/freezer space		
	CYL	Cylinder	dw	Dishwasher space		

KINGSLEY

4 BEDROOM DETACHED HOME



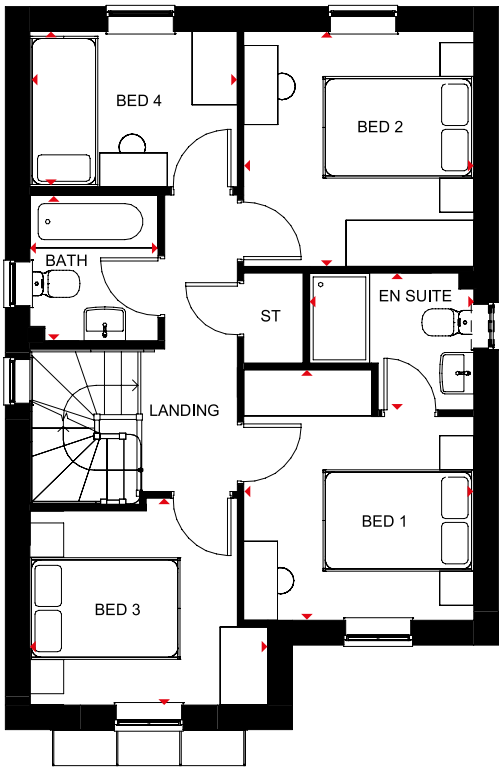
- Bright, airy family home with oversized windows to maximise light
- The large open-plan kitchen has a dining area with French doors leading to the garden. There is also a separate utility room
- The spacious lounge is just the place for the family to relax in
- Upstairs are three double bedrooms, the main bedroom with en suite, one single bedroom and a family bathroom



Ground Floor

Lounge	3370 x 4710mm	11'1" x 15'5"
Kitchen/Dining	5895 x 4268mm	19'4" x 14'0"
WC	904 x 1627mm	3'0" x 5'4"
Utility	1287 x 1841mm	4'3" x 6'0"

(Approximate dimensions)



First Floor

Bedroom 1	3054 x 3328mm	10'0" x 10'11"
En suite	2181 x 1816mm	7'2" x 5'11"
Bedroom 2	3054 x 3123mm	10'0" x 10'3"
Bedroom 3	3160 x 2747mm	10'4" x 9'0"
Bedroom 4	2754 x 2065mm	9'0" x 6'9"
Bathroom	1700 x 1937mm	5'7" x 6'4"

(Approximate dimensions)

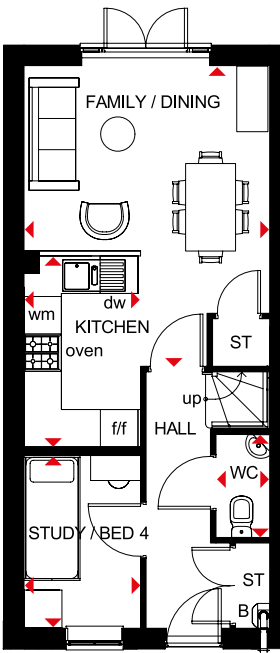
KEY	B	Boiler	f/f	Fridge/freezer space	◀ ▶	Dimension location
	ST	Store	dw	Dishwasher space		
	wm	Washing machine space	td	Tumble dryer space		

KINGSVILLE

4 BEDROOM SEMI-DETACHED HOME



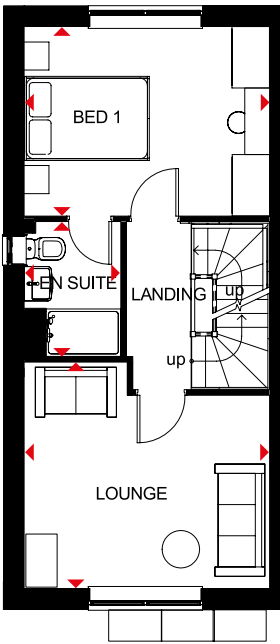
- An ideal family home designed over three floors
- A generous open-plan kitchen with dining and family areas, and a fourth bedroom/study are on the ground floor
- On the first floor oversized windows fill the lounge and main bedroom with light, giving them a bright and airy feeling, and the bedroom has an en suite
- The second floor offers a further double bedroom, a single bedroom and a family bathroom



Ground Floor

Family/Dining	3936 x 4820mm	12'11" x 15'10"
Kitchen	1866 x 3060mm	6'1" x 10'0"
Study/Bed 4	1866 x 2749mm	6'1" x 9'0"
WC	861 x 1649mm	2'10" x 5'5"

(Approximate dimensions)

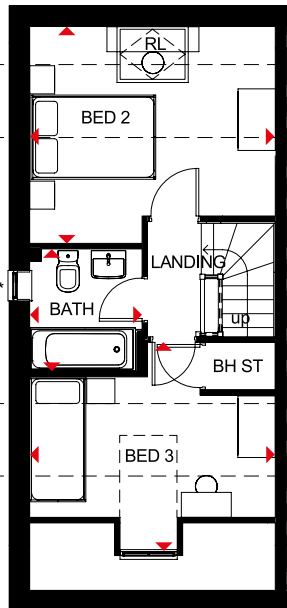


First Floor

Lounge	3936 x 3630mm	12'11" x 11'11"
Bedroom 1	3936 x 3042mm	12'11" x 10'0"
En Suite	1551 x 2163mm	5'1" x 7'1"

(Approximate dimensions)

* Window may be omitted on certain plots. Speak to a Sales Adviser for details on individual plots.



Second Floor

Bedroom 2	3936 x 3508mm	12'11" x 11'6" †
Bedroom 3	3936 x 3325mm	12'11" x 10'11" †
Bathroom	1761 x 1963mm	5'9" x 6'5"

(Approximate dimensions)

* Window may be omitted on certain plots. Speak to a Sales Adviser for details on individual plots.

† Overall floor dimension includes lower ceiling areas.

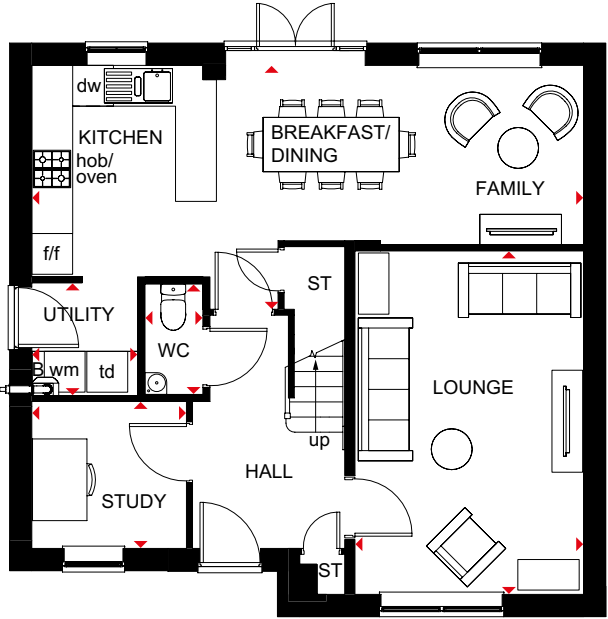
KEY	B	Boiler	wm	Washing machine space	RL	Roof light
	ST	Store	f/f	Fridge/freezer space	◀▶	Dimension location
	BH ST	Bulkhead Store	dw	Dishwasher space		

RADLEIGH

4 BEDROOM DETACHED HOME



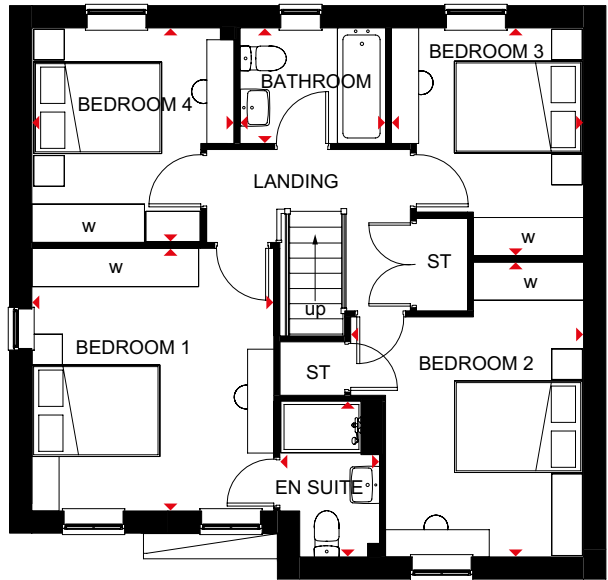
- A bright and airy family home
- The large open-plan kitchen has dining and family areas and French doors leading to the garden. There is also a separate utility room
- A spacious lounge and separate study are also on the ground floor
- Upstairs are four double bedrooms, the main bedroom with en suite shower room, and a family bathroom



Ground Floor

Lounge	3361 x 5046mm	11'0" x 16'7"
Kitchen/ Dining/Family	8110 x 3583mm	26'7" x 11'9"
Utility	1558 x 1655mm	5'1" x 5'5"
Study	2273 x 2158mm	7'5" x 7'1"
WC	884 x 1655mm	2'11" x 5'5"

(Approximate dimensions)



First Floor

Bedroom 1	3570 x 3858mm	11'9" x 12'8"
En Suite	1452 x 2289mm	4'9" x 7'6"
Bedroom 2	3423 x 4335mm	11'3" x 14'3"
Bedroom 3	2824 x 3350mm	9'3" x 11'0"
Bedroom 4	2973 x 3152mm	9'9" x 10'4"
Bathroom	2137 x 1699mm	7'0" x 5'7"

(Approximate dimensions)

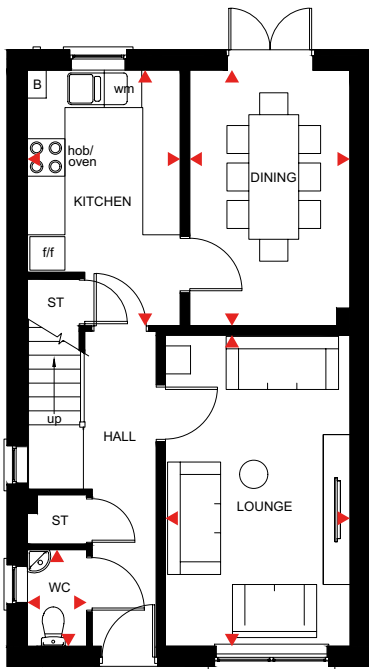
KEY	B	Boiler	f/f	Fridge/freezer space	w	Wardrobe space
	ST	Store	dw	Dishwasher space	◀▶	Dimension location
	wm	Washing machine space	td	Tumble dryer space		

FIRCROFT

6 BEDROOM DETACHED HOME



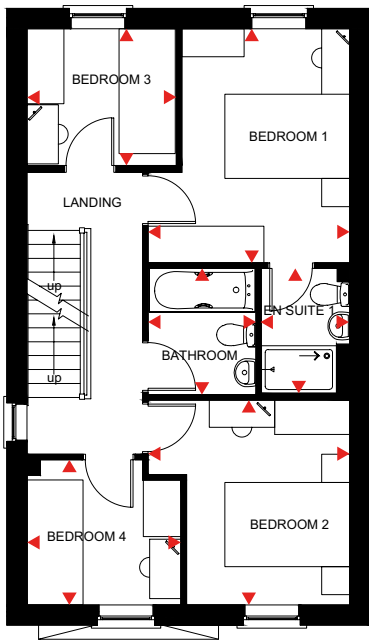
- A spacious family home offering a large lounge, a contemporary kitchen and separate dining room with French doors leading out to the garden
- The first floor features two double bedrooms, with en suite to the main bedroom, two single bedrooms and a family bathroom
- The second floor features two further bedrooms both with en suite shower rooms and a study/store room



Ground Floor

Kitchen	2450 x 4098mm	8'0" x 13'5"
Dining Room	2570 x 4098mm	8'5" x 13'5"
WC	948 x 1547mm	3'1" x 5'1"
Lounge	2957 x 4987mm	9'8" x 16'4"

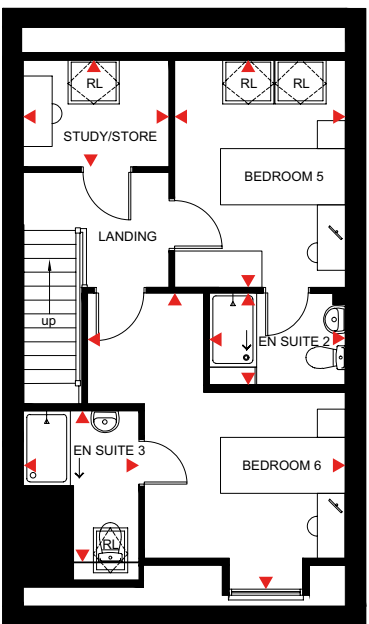
(Approximate dimensions)



First Floor

Bedroom 1	3230 x 3752mm	10'7" x 12'4"
En suite 1	1415 x 2003mm	4'8" x 6'7"
Bedroom 2	3230 x 3282mm	10'7" x 10'9"
Bedroom 3	2391 x 2191mm	7'10" x 7'2"
Bedroom 4	2464 x 2324mm	8'1" x 7'8"
Bathroom	1727 x 2025mm	5'8" x 6'8"

(Approximate dimensions)



Second Floor

Bedroom 5	2739 x 3651mm*	9'0" x 12'0"*
En suite 2	2184 x 1475mm	7'2" x 4'10"
Bedroom 6	4137 x 4746mm*	13'7" x 15'7"*
En suite 3	1857 x 2424mm*	6'1" x 7'11"*
Study/Store	2342 x 1716mm*	7'8" x 5'8"*

(Approximate dimensions)

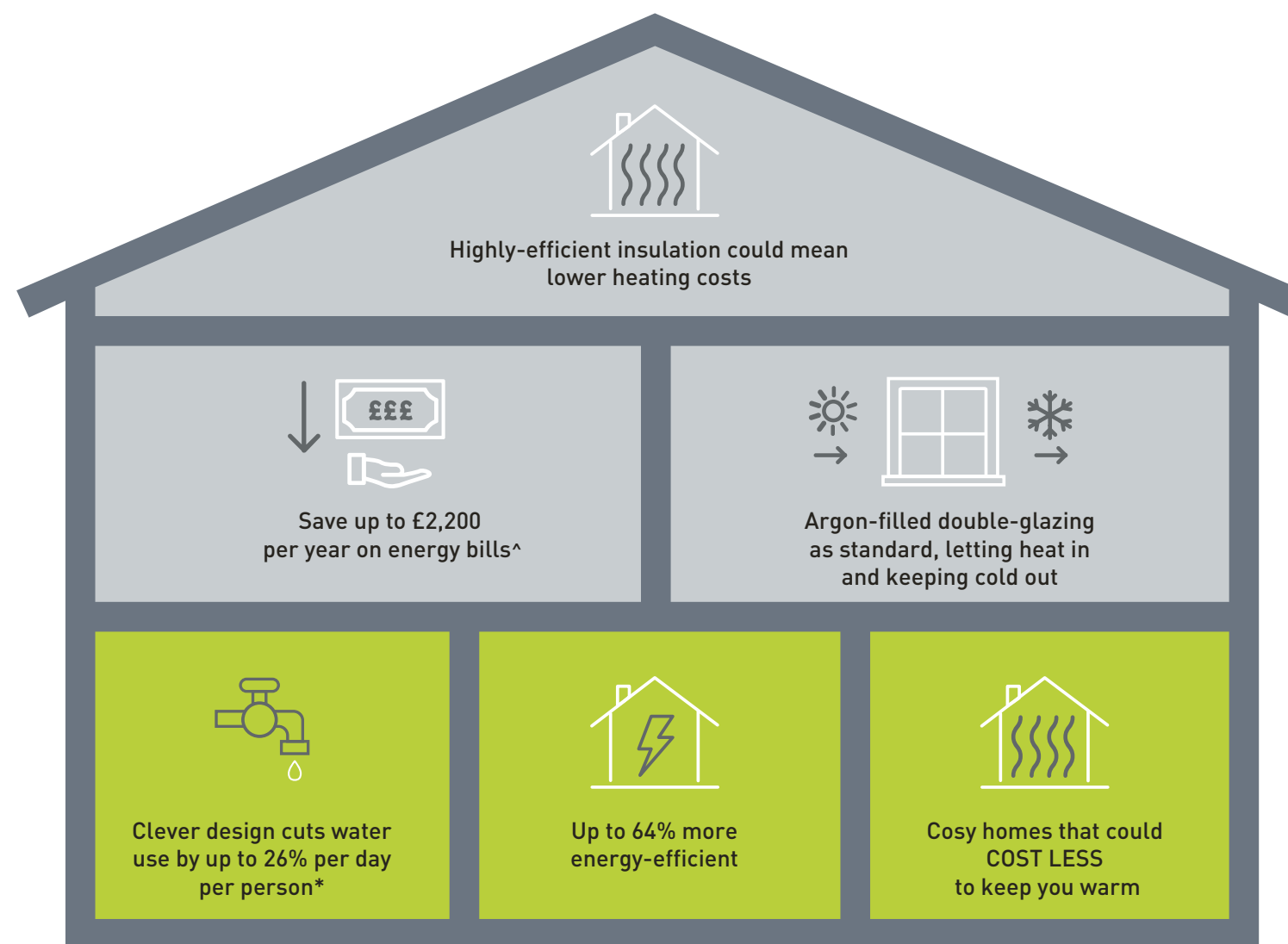
*Overall floor dimension includes lower ceiling areas

KEY B Boiler
ST Store
wm Washing machine space

f/f Fridge/freezer space
◀▶ Dimension location
RL Rooflight

WE'RE HELPING TO MAKE YOUR HOME MORE ENERGY-EFFICIENT

We create low-carbon and efficient homes that are designed and built for better living and meet the challenges of the future.



^Indicative figures, based on HBF "Watt a Save" report published July 2023.

*Source: [Water UK](#)

'We', 'our', 'us' refers to the Barratt Developments PLC Group brands including Barratt Homes, David Wilson Homes and Barratt London. Some of the features shown may not be available with every Barratt home or on every Barratt development. Please speak to a Sales Adviser for details of the features available on the home and development you are interested in. To find out more about the energy-efficiency and sustainability of our homes visit our website. All images used are for illustrative purposes only. Information correct at time of publishing.

CUSTOMER SERVICE BY BARRATT HOMES

BUILDING OUR CUSTOMER SERVICE TO BE THE BEST

At Barratt we are genuinely committed to delivering the highest standards of customer service. The same exacting standards that have helped us win more quality awards than any other major housebuilder also ensure we look after our customers as well as we possibly can.

We believe that solid foundations are as important to a customer relationship as they are to a building. During the planning and design process we go to great lengths to make sure the homes and developments we build are perfectly in tune with the needs and aspirations of their prospective owners.

Our Directors carry out weekly site inspections before, during and after the build process. As your home is built, it is checked at every stage to ensure it reaches the exacting standards we demand.

Our Customer Service Charter lays out our commitments to you and details the care, support and assistance we'll provide you with throughout your purchase and long after you've moved in.

As a result of the outstanding service we provide to our customers, we have been awarded the exceptional accreditation of "5 Star Builder" by the independent Home Builders Federation. 29,000 homebuyers across the country took part in the survey and this honour recognises the highest levels of positive recommendation by our customers, as well as the superior build quality of our homes.



5 GREAT REASONS TO BUY WITH BARRATT

1. 5 Stars for Customer Satisfaction

No other major national housebuilder** has been awarded a Home Builders Federation 5 Star Housebuilder accolade every year since 2010. All thanks to positive recommendations by our customers.

2. Building homes for over 5 decades

We've been established for over 5 decades and in that time have built over 300,000 new homes. Our commitment to quality and innovation is shown in the highest standards of design, construction, finish and the customer service we provide.

3. Award winners, time and time again

Our steadfast commitment to quality has ensured that for the tenth year in a row our site managers have picked up more awards than any other housebuilder, winning NHBC Pride in the Job awards for their workmanship and demonstrating our dedication and commitment to building homes of the very highest standard.

4. Creating places where you'll love to live both inside and out

Our light, open-plan properties are really adaptable – every room can suit a variety of lifestyles. Whether you want space for the kids to play or more room to entertain friends, our fantastic range of homes can give you that flexibility.

We also know our customers love green open spaces and we go to great lengths to maintain and enhance the local environment on our developments. In fact, we plant an average of 20 shrubs or trees for each home we build, creating a beautiful and sustainable environment to live in.

5. Our energy efficient homes could save you money

Every home we build is sustainable and energy efficient – minimising their impact on the environment, whilst reducing your energy costs too. Our homes could save you money by being 45% to 55% more energy efficient than a same sized older home – even after it's been modernised. As a result, you could save a staggering £1,312*** per year on your energy bill.

Find out more, talk to one of our Sales Advisers today.



Images may include optional upgrades at additional cost. All information in this document is correct to the best of our knowledge at the time of going to print. Wigston Meadows is a marketing name only and may not be the designated postal address, which may be determined by The Post Office. **Refers to the Barratt Developments PLC Group brands. ***Costs based upon the comparison of a new build four-bed detached house built to 2010 regulations vs. Victorian property (upgraded with modern-day improvements). An upgraded Victorian home means one which has the following improvements over original build specification: 200mm loft insulation, double glazing to half of all windows, a 72% efficient (non-condensing) gas boiler and insulated hot water cylinder. Source: Zero Carbon Hub and NHBC Foundation 2012.

NEW HOMES QUALITY CODE

Housebuilders and developers who build new homes will be expected to register with the New Homes Quality Board (NHQB). As long as a housebuilder or developer has followed the correct registration process, including completing the necessary training, introducing a complaints procedure, and following other processes and procedures that are needed to meet the requirements of this New Homes Quality Code (the code), they will become a registered developer.

Registered developers agree to follow the code and the New Homes Ombudsman Service, including accepting the decisions of the New Homes Ombudsman in relation to dealings with customers. If a registered developer does not meet the required standards, or fails to accept and act in line with the decisions of the New Homes Ombudsman, they may have action taken against them, including being removed from the register of registered developers.

The code sets out the requirements that registered developers must meet. The code may be updated from time to time to reflect changes to industry best practice as well as the decisions of the New Homes Ombudsman Service.

All homes built by registered developers must meet building-safety and other regulations. All registered developers should aim to make sure there are no snags or defects in their properties before the keys are handed over to a customer. If there are any snags or defects, these should be put right within the agreed timescales.

WHAT THE CODE COVERS

For the purposes of this code, ‘customer’ means a person who is buying or intends to buy a new home which they will live in or give to another person. (If a new home is being bought in joint names, ‘the customer’ includes all the joint customers.) However, the New Homes Quality Board have also started work to consider other groups of customers and what they should be able to expect from a new home. This includes shared owners and people who are buying a new home to let to other people. Any changes the New Homes Quality Board make to the code to reflect the needs of other groups of customers will be developed through consultation, and they will continually assess and review the effectiveness of the code, and any new laws or regulations that apply. Other areas which are not covered by the code are claims for loss of property value or blight (where a property falls in value or becomes difficult to sell because of major public work in the area), personal injury or claims that are not covered by the scheme rules of the New Homes Ombudsman Service.



barratthomes.co.uk
0333 355 8472



Calls to 03 numbers are charged at the same rate as dialling an 01 or 02 number. If your fixed line or mobile service has inclusive minutes to 01/02 numbers, then calls to 03 are counted as part of this inclusive call volume. Non-BT customers and mobile phone users should contact their service providers for information about the cost of calls.