



FOUNDRY LEA



DAVID WILSON HOMES
WHERE QUALITY LIVES

EXPERIENCE

— THE DAVID WILSON DIFFERENCE —

At David Wilson Homes we have been building quality homes across the UK for over 40 years. Our reputation is founded on our commitment to provide traditional homes in desirable locations built to a superb specification.

We* are delighted to have received over 90% homeowner recommendation since 2010. This Home Builders Federation accolade, recognises our commitment to bring you beautiful new homes.

Our collection of beautiful homes offer a range of spacious bedroom designs, located in highly desirable locations.

We would encourage you to come and experience the David Wilson Difference and we look forward to seeing you at one of our many developments.



DAVID WILSON HOMES

WHERE QUALITY LIVES

FOUNDRY LEA

— A THRIVING, SUSTAINABLE NEW COMMUNITY —



Foundry Lea will be a development of 2, 3, 4 & 5 bedroom homes on the edge of Bridport.

Open space, allotments and an orchard will form part of this new community, and your new home will be close to Bridport town centre which has a range of supermarkets, pubs and restaurants.

The A35 is close by and you'll find the Jurassic Coast just 10 minutes away.

Under 5 minutes away you'll find Bridport & West Dorset Golf Club and Bridport Leisure Centre, as well as a range of pubs and restaurants, such as The White Lion.

Enjoy the great outdoors with National Trust walks and local beaches just a short drive away.

A SENSE OF PEACE
QUALITY
— AND SPACE —

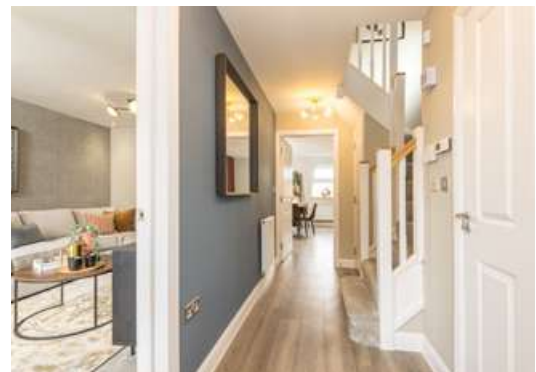
Our homes at Foundry Lea provide a sense of quality from the moment you step inside. We have thought carefully about the demands of family life. Intelligent designs ensure the interior layouts are bright and airy, with free-flowing, flexible rooms easy to adapt to the way you and your family want to live.



Entertaining will be effortless with spare rooms for your guests and open-plan kitchen or living dining areas allowing space for you to enjoy quality time. You won't have to wait for that morning shower as most of our homes have two or more bathrooms, including your own private sanctuary – a main bedroom en suite.



Hallways are large enough for a warm welcome and kitchens or living rooms open onto your garden for those summer days. Most importantly, everything is finished to the highest standards and there is plenty of storage for all of your things to ensure you have an ideal place for a comfortable lifestyle.



THIRTY MINUTES

FROM YOUR NEW HOME



Colmers Hill
4 minutes by car



Symondsbur Estate
4 minutes by car



Bridport Town
5 minutes by car



Bridport & West Dorset Golf Club
7 minutes by car



Jurassic Coast Cliffs
8 minutes by car



West Bay
8 minutes by car



Lyme Regis
20 minutes by car



Axminster
20 minutes by car



Dorchester
30 minutes by car

CREATING A SUSTAINABLE COMMUNITY

WHERE FAMILIES AND NATURE CAN THRIVE

At David Wilson Homes, we do more than simply craft beautiful homes and desirable developments.

We design and build great places that meet the highest standards, and that promote sustainable, healthy and happy living for our customers.

We know we must give our customers confidence that their homes are designed and built to meet the challenges of the future. We do this through creating places where people and nature can thrive.



**12 Acres of
Open Space
and Play Areas**



**1.2 Acres
of Allotments**



**1.75 Acres of
New Woodland**



**Photovoltaic
Solar Panels for
Every Home**



**EV Charging
for Every Home**



**550
New Trees**



**2 Sports
Pitches**



**New
Primary School**



**Bee, Bat and
Bird Boxes**



**Hedgehog
Highways**



**New Walking and
Cycle Routes**



FOUNDRY LEA

- **The Ashdown**
2 bedroom home
- **The Fairway**
3 bedroom home
- **The Archford**
3 bedroom home
- **The Hadley**
3 bedroom home
- **The Kennett**
3 bedroom home
- **The Hurst**
4 bedroom home
- **The Ingleby**
4 bedroom home
- **The Kirkdale**
4 bedroom home
- **The Cornell**
4 bedroom home
- **The Bradgate**
4 bedroom home
- **The Avondale**
4 bedroom home
- **The Holden**
4 bedroom home
- **The Emerson**
5 bedroom home
- **Affordable housing**
- V **Visitors Parking**
- SH **Show Home**



New Tree Lines

Mature Trees

Giving nature a home on this development:

Hedgehog Highway
Selected plot*

Bat Habitat
Selected plot*

Bat Box
Selected plot*

Swift Nesting Brick
Selected plot*

Positioning of our sustainability features are subject to change. Speak to a Sales Adviser for more information.

See the Difference at dwh.co.uk



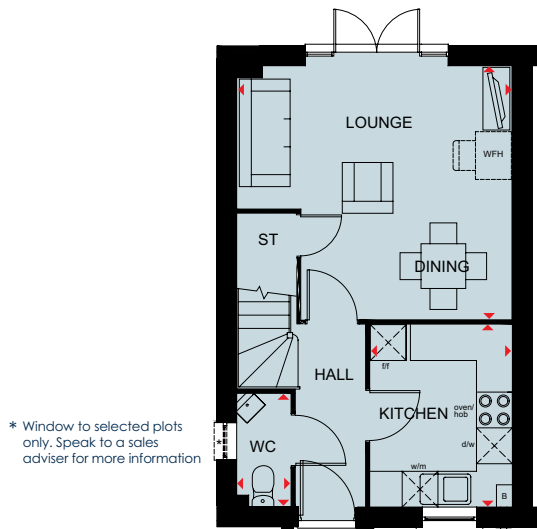
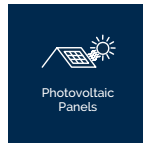
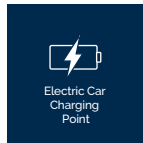
DAVID WILSON HOMES
WHERE QUALITY LIVES

Images and development layouts are for illustrative purposes, should be used for general guidance only and are not intended to form part of any contract or warranty unless specifically incorporated in writing. Development layouts including house types are tenures, the location of affordable housing, parking arrangements, play areas, landscaping and public open spaces are subject to change including any changes required due to a change in planning permission. Foundry Lea is a marketing name only and may not be the designated postal address, which may be determined by The Post Office.

0665-R1-102 Rev: C

THE ASHDOWN

TWO BEDROOM HOME



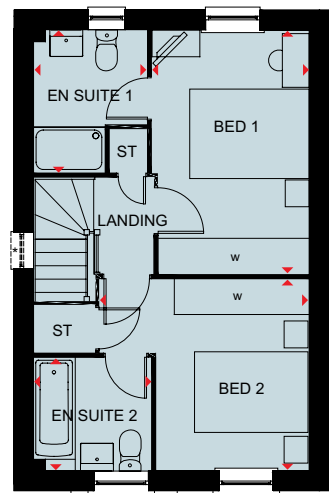
Ground Floor

Lounge/Dining
Kitchen
WC

(Approximate dimensions)

4612 x 4248 mm 15'2" x 13'11"
3057 x 2378 mm 10'0" x 7'10"
1897 x 902 mm 6'3" x 3'11"

* Window to selected plots only. Speak to a sales adviser for more information



First Floor

Bedroom 1
En suite 1
Bedroom 2
En suite 2

(Approximate dimensions)

3504 x 3211 mm 11'6" x 10'6"
1969 x 1897 mm 6'6" x 6'3"
4089 x 2632 mm 13'5" x 8'7"
2391 x 1883 mm 7'10" x 6'0"

Key

B Boiler
ST Store

w/m Washing machine
d/w Dishwasher space

f/f Fridge freezer space
WFH Working from home space

W Wardrobe space
◀▶ Dimension location



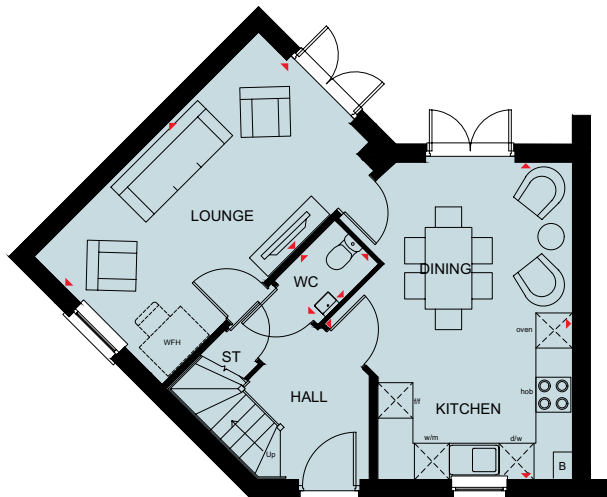
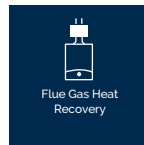
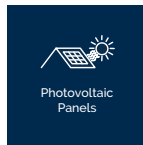
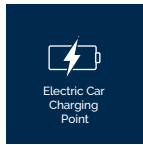
DAVID WILSON HOMES

We are on the New Homes Quality Code register of registered developers. "We" refers to the Barratt Developments PLC group brands including Barratt London, Barratt Homes and David Wilson Homes. All images used are for illustrative purposes. These and the dimensions given are illustrative for this house type and individual properties may differ. Please check with your Sales Adviser in respect of individual properties. We give maximum dimensions within each room which includes areas of fixtures and fittings including fitted furniture. These dimensions should not be used for carpet or flooring sizes, appliance spaces or items of furniture. All images, photographs and dimensions are not intended to be relied upon for, nor to form part of, any contract unless specifically incorporated in writing into the contract.

BDW/FL/JULY25

THE FAIRWAY

THREE BEDROOM HOME



Ground Floor

Lounge	5385 x 3045 mm	17'8" x 10'0"
Kitchen/Dining	5390 x 4211 mm	17'8" x 13'10"
WC	1448 x 1025 mm	4'9" x 3'4"

(Approximate dimensions)



First Floor

Bedroom 1	3601 x 3111 mm	11'10" x 10'2"
En suite	2161 x 1650 mm	7'1" x 5'5"
Bedroom 2	3160 x 3406 mm	10'5" x 11'2"
Bedroom 3	3542 x 2131 mm	11'7" x 7'0"
Bathroom	2518 x 1700 mm	8'3" x 5'7"

(Approximate dimensions)

Key

B	Boiler	w/m	Washing machine	f/f	Fridge freezer space	W	Wardrobe space
ST	Store	d/w	Dishwasher space	WFH	Working from home space	◀▶	Dimension location



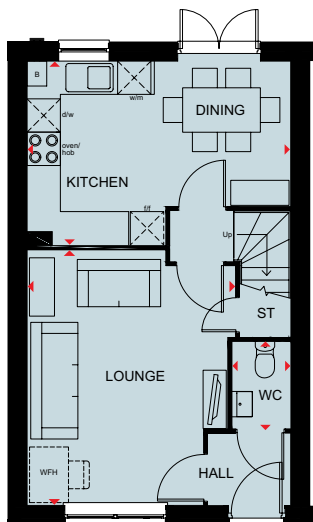
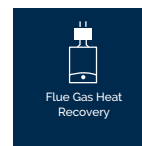
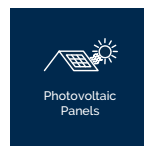
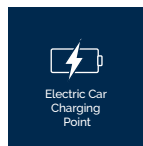
DAVID WILSON HOMES

We are on the New Homes Quality Code register of registered developers. "We" refers to the Barratt Developments PLC group brands including Barratt London, Barratt Homes and David Wilson Homes. All images used are for illustrative purposes. These and the dimensions given are illustrative for this house type and individual properties may differ. Please check with your Sales Adviser in respect of individual properties. We give maximum dimensions within each room which includes areas of fixtures and fittings including fitted furniture. These dimensions should not be used for carpet or flooring sizes, appliance spaces or items of furniture. All images, photographs and dimensions are not intended to be relied upon for, nor to form part of, any contract unless specifically incorporated in writing into the contract.

BDW/FL/JULY25

THE ARCHFORD

THREE BEDROOM HOME



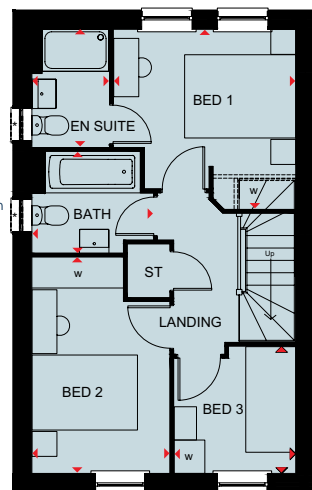
Ground Floor

Lounge	4599 x 3746 mm	15'1" x 12'3"
Kitchen/Dining	4745 x 3310 mm	15'7" x 10'10"
WC	1561 x 1054 mm	5'1" x 3'5"

(Approximate dimensions)

Key

B	Boiler	w/m	Washing machine	f/f	Fridge freezer space	W	Wardrobe space
ST	Store	d/w	Dishwasher space	WFH	Working from home space	◀▶	Dimension location



First Floor

Bedroom 1	3277 x 3229 mm	10'9" x 10'7"
En suite	2119 x 1385 mm	6'11" x 4'7"
Bedroom 2	3887 x 2475 mm	12'9" x 8'1"
Bedroom 3	2281 x 2186 mm	7'6" x 7'2"
Bathroom	2181 x 1815 mm	7'2" x 5'11"

(Approximate dimensions)

* Window to selected plots only. Speak to a sales adviser for more information



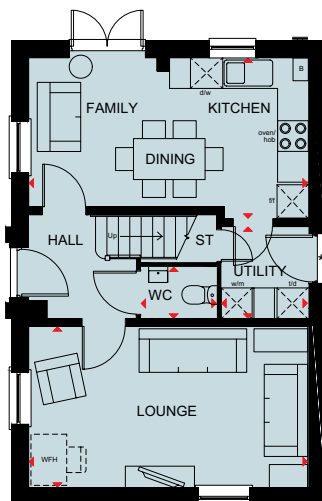
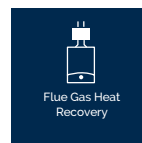
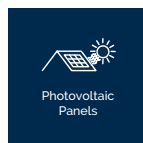
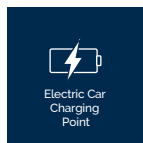
DAVID WILSON HOMES

We are on the New Homes Quality Code register of registered developers. "We" refers to the Barratt Developments PLC group brands including Barratt London, Barratt Homes and David Wilson Homes. All images used are for illustrative purposes. These and the dimensions given are illustrative for this house type and individual properties may differ. Please check with your Sales Adviser in respect of individual properties. We give maximum dimensions within each room which includes areas of fixtures and fittings including fitted furniture. These dimensions should not be used for carpet or flooring sizes, appliance spaces or items of furniture. All images, photographs and dimensions are not intended to be relied upon for, nor to form part of, any contract unless specifically incorporated in writing into the contract.

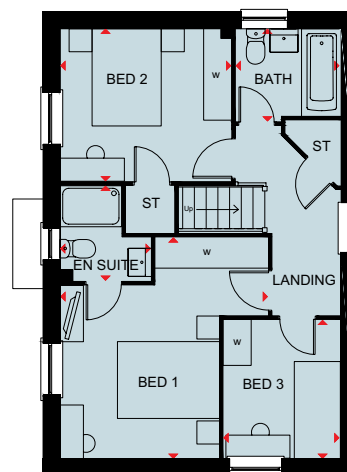
BDW/FL/JULY25

THE HADLEY

THREE BEDROOM HOME



* Utility door omitted from Plots 303, 385 & 504



Ground Floor

Lounge	5450 x 3148 mm	17'11" x 10'4"
Kitchen/Family/Dining	5450 x 3143 mm	17'11" x 10'4"
Utility	1799 x 1688 mm	5'11" x 5'6"
WC	1480 x 1014 mm	4'10" x 3'4"

(Approximate dimensions)

Key

B	Boiler	w/m	Washing machine	f/f	Fridge freezer space
ST	Store	d/w	Dishwasher space	t/d	Tumble dryer space

First Floor

Bedroom 1	4324 x 4053 mm	14'2" x 13'3"
En suite	1856 x 1771 mm	6'1" x 5'9"
Bedroom 2	3336 x 2978 mm	11'3" x 9'9"
Bedroom 3	2713 x 2265 mm	8'11" x 7'5"
Bathroom	2025 x 1811 mm	6'8" x 6'0"

(Approximate dimensions)

W	Wardrobe space	◀▶	Dimension location
WFH	Working from home space		



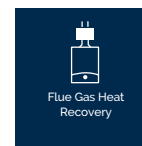
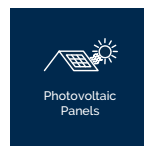
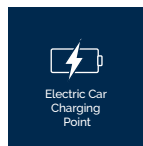
DAVID WILSON HOMES

We are on the New Homes Quality Code register of registered developers. "We" refers to the Barratt Developments PLC group brands including Barratt London, Barratt Homes and David Wilson Homes. All images used are for illustrative purposes. These and the dimensions given are illustrative for this house type and individual properties may differ. Please check with your Sales Adviser in respect of individual properties. We give maximum dimensions within each room which includes areas of fixtures and fittings including fitted furniture. These dimensions should not be used for carpet or flooring sizes, appliance spaces or items of furniture. All images, photographs and dimensions are not intended to be relied upon for, nor to form part of, any contract unless specifically incorporated in writing into the contract.

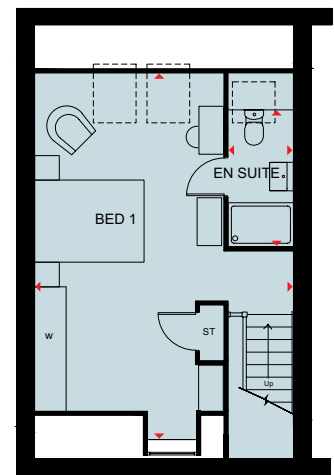
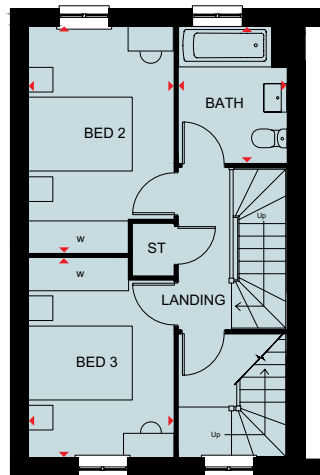
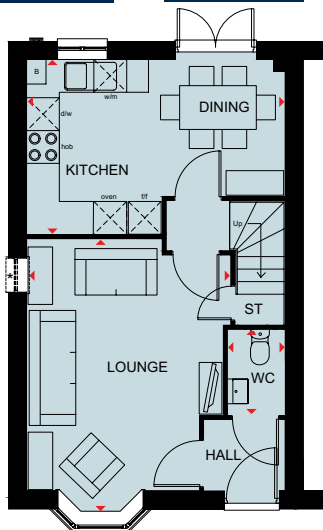
BDW/FL/JULY25

THE KENNETT

THREE BEDROOM HOME



* Window to end of terrace plots only. Speak to a sales adviser for more information



Ground Floor

Lounge	4994 x 3727 mm	16'5" x 12'3"
Kitchen/Dining	4726 x 3195 mm	15'6" x 10'6"
WC	1562 x 1038 mm	5'1" x 3'5"

(Approximate dimensions)

First Floor

Bedroom 2	4141 x 2657 mm	13'7" x 8'9"
Bedroom 3	3656 x 2658 mm	12'0" x 8'9"
Bathroom	2496 x 1986 mm	8'2" x 6'6"

(Approximate dimensions)

Second Floor

Bedroom 1	6681 x 4731 mm	21'11" x 15'6"
En suite	2496 x 1190 mm	8'2" x 3'11"

(Approximate dimensions)

Key

B	Boiler	w/m	Washing machine	f/f	Fridge freezer space	◀▶	Dimension location
ST	Store	d/w	Dishwasher space	W	Wardrobe space		



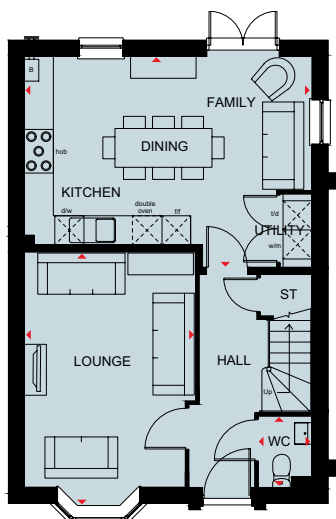
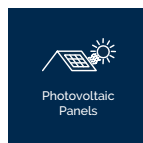
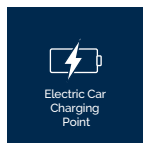
DAVID WILSON HOMES

We are on the New Homes Quality Code register of registered developers. "We" refers to the Barratt Developments PLC group brands including Barratt London, Barratt Homes and David Wilson Homes. All images used are for illustrative purposes. These and the dimensions given are illustrative for this house type and individual properties may differ. Please check with your Sales Adviser in respect of individual properties. We give maximum dimensions within each room which includes areas of fixtures and fittings including fitted furniture. These dimensions should not be used for carpet or flooring sizes, appliance spaces or items of furniture. All images, photographs and dimensions are not intended to be relied upon for, nor to form part of, any contract unless specifically incorporated in writing into the contract.

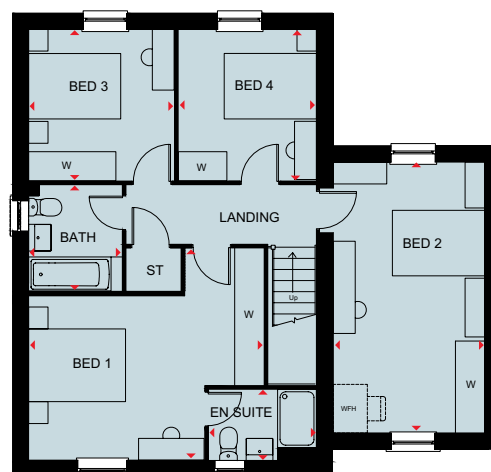
BDW/FL/JULY25

THE HURST

FOUR BEDROOM HOME



DRIVE THROUGH



Ground Floor

Lounge	3520 x 5242 mm	11'7" x 17'2"
Kitchen/Dining/Family	5929 x 4350 mm	19'6" x 14'3"
WC	1461 x 1108 mm	4'9" x 3'8"

(Approximate dimensions)

First Floor

Bedroom 1	4850 x 4370 mm	15'11" x 14'4"
En suite	1461 x 2218 mm	4'9" x 7'3"
Bedroom 2	5582 x 3115 mm	18'4" x 10'2"
Bedroom 3	3120 x 3000 mm	10'3" x 9'10"
Bedroom 4	3120 x 2845 mm	10'3" x 9'4"
Bathroom	2181 x 1924 mm	7'2" x 6'4"

(Approximate dimensions)

Key

B	Boiler	w/m	Washing machine	f/f	Fridge freezer space
ST	Store	d/w	Dishwasher space	t/d	Tumble dryer space

W	Wardrobe space	◀▶	Dimension location
WFH	Working from home space		



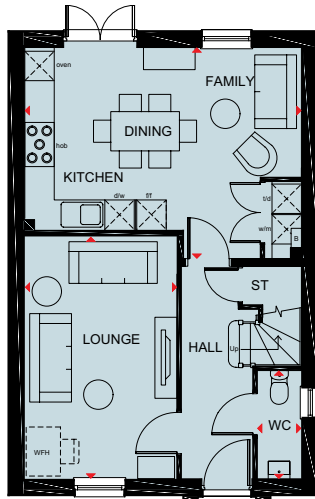
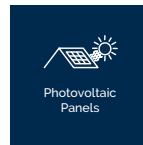
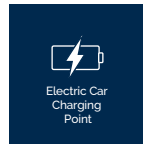
DAVID WILSON HOMES

We are on the New Homes Quality Code register of registered developers. "We" refers to the Barratt Developments PLC group brands including Barratt London, Barratt Homes and David Wilson Homes. All images used are for illustrative purposes. These and the dimensions given are illustrative for this house type and individual properties may differ. Please check with your Sales Adviser in respect of individual properties. We give maximum dimensions within each room which includes areas of fixtures and fittings including fitted furniture. These dimensions should not be used for carpet or flooring sizes, appliance spaces or items of furniture. All images, photographs and dimensions are not intended to be relied upon for, nor to form part of, any contract unless specifically incorporated in writing into the contract.

BDW/FL/JULY25

THE INGLEBY

FOUR BEDROOM HOME



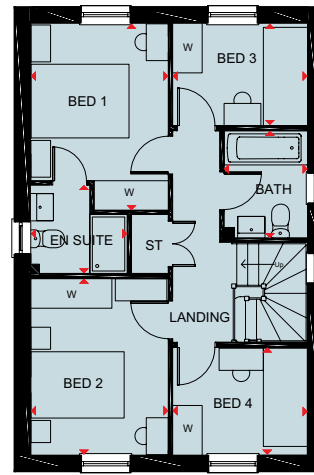
Ground Floor

Lounge	4925 x 3095 mm	16'2" x 10'2"
Kitchen/Family/Dining	5635 x 4295 mm	18'6" x 14'1"
WC	2206 x 900 mm	7'3" x 2'11"

(Approximate dimensions)

Key

B	Boiler	w/m	Washing machine	f/f	Fridge freezer space
ST	Store	d/w	Dishwasher space	t/d	Tumble dryer space



First Floor

Bedroom 1	3797 x 2800 mm	12'6" x 9'2"
En suite	1962 x 1800 mm	6'5" x 5'11"
Bedroom 2	3587 x 2800 mm	11'9" x 9'2"
Bedroom 3	2747 x 2073 mm	9'0" x 6'9"
Bedroom 4	2747 x 2181 mm	9'0" x 7'1"
Bathroom	2179 x 1700 mm	7'2" x 5'7"

(Approximate dimensions)

W	Wardrobe space	◀▶	Dimension location
WFH	Working from home space		



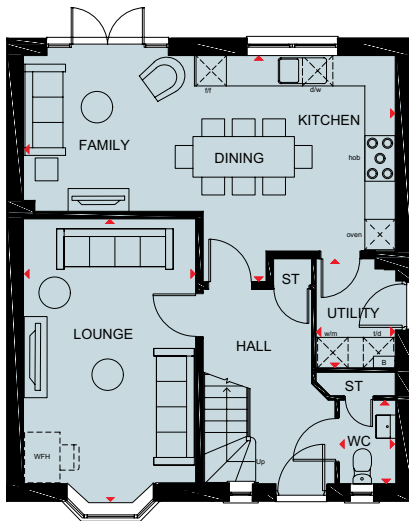
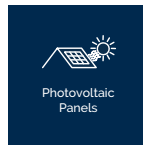
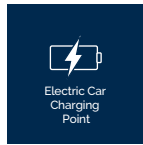
DAVID WILSON HOMES

We are on the New Homes Quality Code register of registered developers. "We" refers to the Barratt Developments PLC group brands including Barratt London, Barratt Homes and David Wilson Homes. All images used are for illustrative purposes. These and the dimensions given are illustrative for this house type and individual properties may differ. Please check with your Sales Adviser in respect of individual properties. We give maximum dimensions within each room which includes areas of fixtures and fittings including fitted furniture. These dimensions should not be used for carpet or flooring sizes, appliance spaces or items of furniture. All images, photographs and dimensions are not intended to be relied upon for, nor to form part of, any contract unless specifically incorporated in writing into the contract.

BDW/FL/JULY25

THE KIRKDALE

FOUR BEDROOM HOME



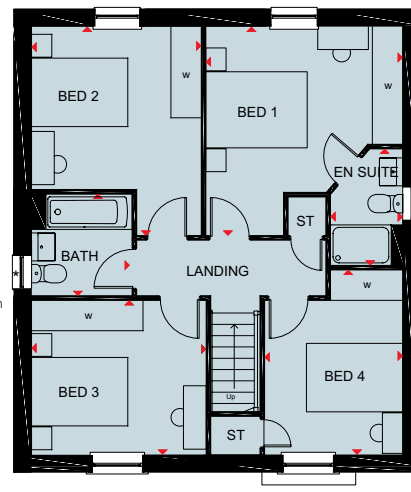
Ground Floor

Lounge	3380 x 5617 mm	11'1" x 18'5"
Kitchen/Family/Dining	7318 x 4460 mm	24'0" x 14'8"
Utility	1561 x 2150 mm	5'1" x 7'1"
WC	1095 x 1650 mm	3'7" x 5'5"

(Approximate dimensions)

Key

B	Boiler	w/m	Washing machine	f/f	Fridge freezer space
ST	Store	d/w	Dishwasher space	t/d	Tumble dryer space



First Floor

Bedroom 1	3885 x 4119 mm	12'9" x 13'6"
En suite	1425 x 2300 mm	4'8" x 7'7"
Bedroom 2	3350 x 4119 mm	11'0" x 13'6"
Bedroom 3	3447 x 3043 mm	11'4" x 10'0"
Bedroom 4	2725 x 3643 mm	8'11" x 12'0"
Bathroom	1987 x 2010 mm	6'6" x 6'7"

(Approximate dimensions)

W	Wardrobe space	◀▶	Dimension location
WFH	Working from home space		



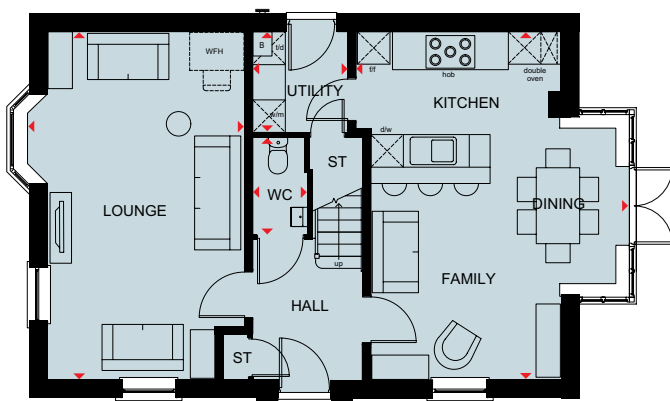
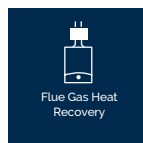
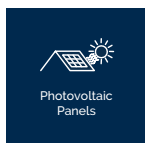
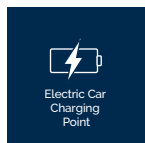
DAVID WILSON HOMES

We are on the New Homes Quality Code register of registered developers. "We" refers to the Barratt Developments PLC group brands including Barratt London, Barratt Homes and David Wilson Homes. All images used are for illustrative purposes. These and the dimensions given are illustrative for this house type and individual properties may differ. Please check with your Sales Adviser in respect of individual properties. We give maximum dimensions within each room which includes areas of fixtures and fittings including fitted furniture. These dimensions should not be used for carpet or flooring sizes, appliance spaces or items of furniture. All images, photographs and dimensions are not intended to be relied upon for, nor to form part of, any contract unless specifically incorporated in writing into the contract.

BDW/FL/JULY25

THE CORNELL

FOUR BEDROOM HOME



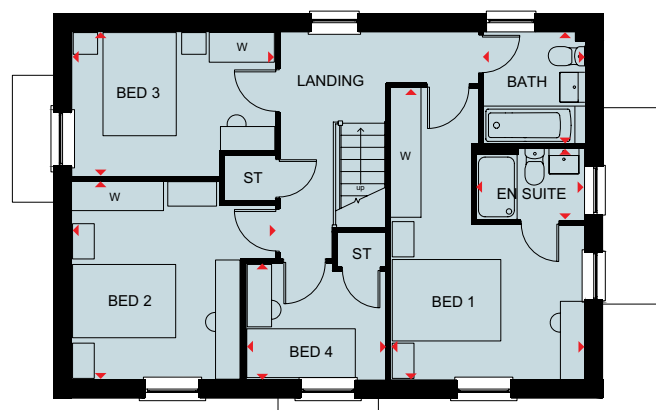
Ground Floor

Lounge	6422 x 4023 mm	21'1" x 13'2"
Kitchen/Dining/Family	6422 x 5038 mm	21'1" x 16'6"
Utility	1860 x 1749 mm	6'1" x 5'9"
WC	1786 x 1014 mm	5'10" x 3'4"

(Approximate dimensions)

Key

B	Boiler	w/m	Washing machine	f/f	Fridge freezer space	W	Wardrobe space	◀▶	Dimension location
ST	Store	d/w	Dishwasher space	t/d	Tumble dryer space	WFH	Working from home space		



First Floor

Bedroom 1	5383 x 3571 mm	17'8" x 11'8"
En suite	2005 x 1324 mm	6'7" x 4'4"
Bedroom 2	3670 x 3756 mm	12'1" x 12'4"
Bedroom 3	3751 x 2661 mm	12'4" x 8'9"
Bedroom 4	2577 x 2160 mm	8'5" x 7'1"
Bathroom	2057 x 1875 mm	6'9" x 6'2"

(Approximate dimensions)



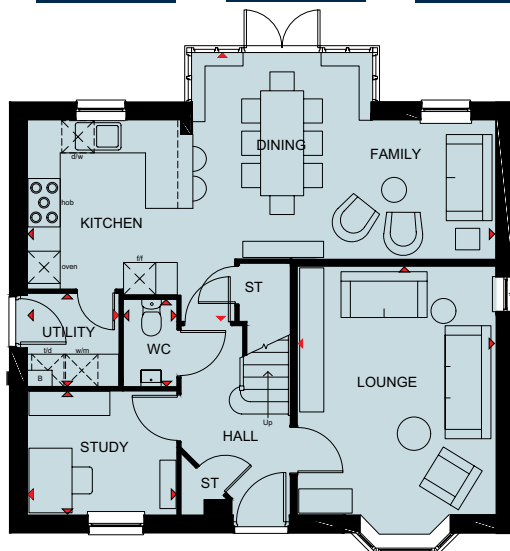
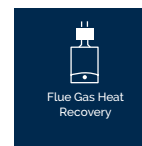
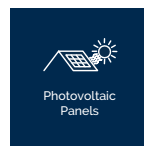
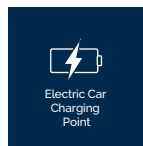
DAVID WILSON HOMES

We are on the New Homes Quality Code register of registered developers. "We" refers to the Barratt Developments PLC group brands including Barratt London, Barratt Homes and David Wilson Homes. All images used are for illustrative purposes. These and the dimensions given are illustrative for this house type and individual properties may differ. Please check with your Sales Adviser in respect of individual properties. We give maximum dimensions within each room which includes areas of fixtures and fittings including fitted furniture. These dimensions should not be used for carpet or flooring sizes, appliance spaces or items of furniture. All images, photographs and dimensions are not intended to be relied upon for, nor to form part of, any contract unless specifically incorporated in writing into the contract.

BDW/FL/JULY25

THE BRADGATE

FOUR BEDROOM HOME



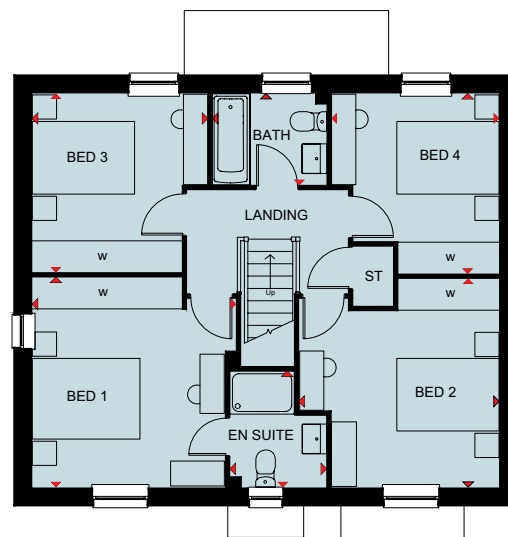
Ground Floor

Lounge	4994 x 3653 mm	16'5" x 12'0"
Kitchen/Breakfast/Dining	8673 x 4992 mm	28'5" x 16'5"
Utility	1688 x 1725 mm	5'6" x 5'8"
Study	2762 x 2285 mm	9'1" x 7'6"
WC	1614 x 987 mm	5'4" x 3'3"

(Approximate dimensions)

Key

B	Boiler	w/m	Washing machine	f/f	Fridge freezer space	W	Wardrobe space
ST	Store	d/w	Dishwasher space	t/d	Tumble dryer space	◀▶	Dimension location



First Floor

Bedroom 1	3901 x 3786 mm	12'10" x 12'5"
En suite	2157 x 1700 mm	7'1" x 5'11"
Bedroom 2	3720 x 3876 mm	12'2" x 12'9"
Bedroom 3	3324 x 3259 mm	10'11" x 10'8"
Bedroom 4	3349 x 3113 mm	11'0" x 10'3"
Bathroom	2125 x 1700 mm	7'0" x 5'7"

(Approximate dimensions)



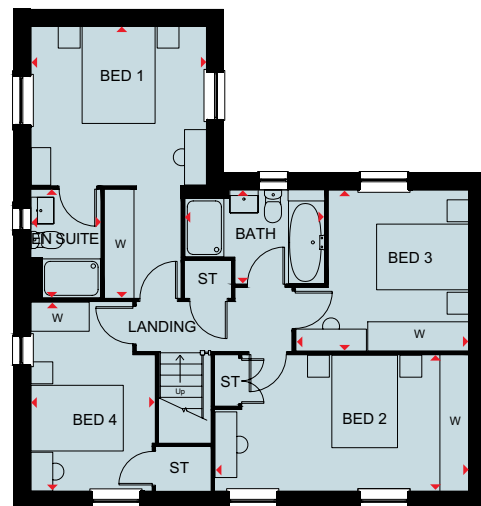
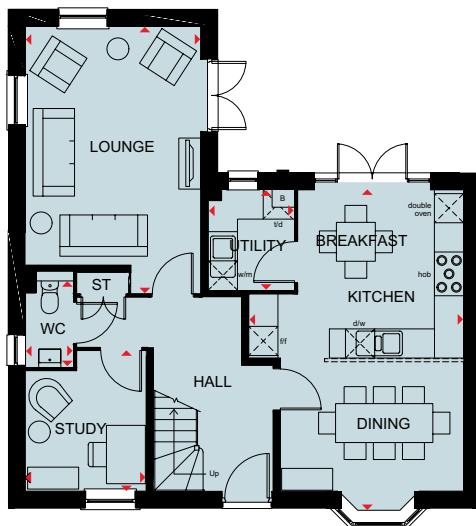
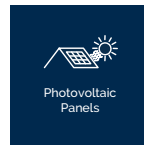
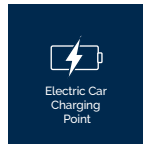
DAVID WILSON HOMES

We are on the New Homes Quality Code register of registered developers. "We" refers to the Barratt Developments PLC group brands including Barratt London, Barratt Homes and David Wilson Homes. All images used are for illustrative purposes. These and the dimensions given are illustrative for this house type and individual properties may differ. Please check with your Sales Adviser in respect of individual properties. We give maximum dimensions within each room which includes areas of fixtures and fittings including fitted furniture. These dimensions should not be used for carpet or flooring sizes, appliance spaces or items of furniture. All images, photographs and dimensions are not intended to be relied upon for, nor to form part of, any contract unless specifically incorporated in writing into the contract.

BDW/FL/JULY25

THE AVONDALE

FOUR BEDROOM HOME



Ground Floor

Lounge	5488 x 3605 mm	18'0" x 11'10"
Kitchen/Breakfast/Dining	6590 x 4415 mm	21'7" x 14'6"
Utility	2060 x 1761 mm	6'9" x 5'9"
Study	2878 x 2488 mm	9'5" x 8'2"
WC	1768 x 975 mm	5'10" x 3'2"

(Approximate dimensions)

Key

B Boiler
ST Store

w/m Washing machine
d/w Dishwasher space

f/f Fridge freezer space
t/d Tumble dryer space

W Wardrobe space
◀▶ Dimension location

First Floor

Bedroom 1	5585 x 3605 mm	18'3" x 11'10"
En suite	2222 x 1433 mm	7'3" x 4'8"
Bedroom 2	5225 x 2792 mm	17'1" x 9'2"
Bedroom 3	3563 x 3308 mm	11'8" x 10'10"
Bedroom 4	3853 x 2547 mm	12'7" x 8'4"
Bathroom	2871 x 1927 mm	9'5" x 6'4"

(Approximate dimensions)



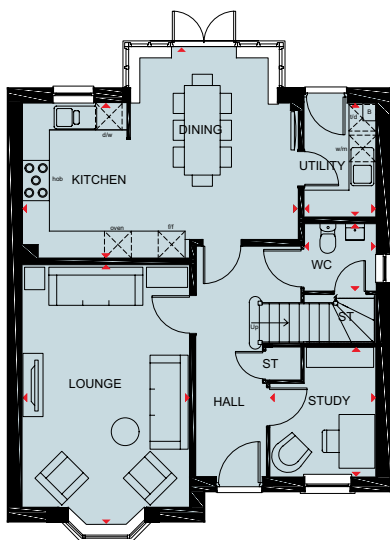
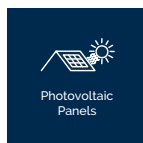
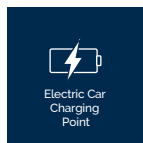
DAVID WILSON HOMES

We are on the New Homes Quality Code register of registered developers. "We" refers to the Barratt Developments PLC group brands including Barratt London, Barratt Homes and David Wilson Homes. All images used are for illustrative purposes. These and the dimensions given are illustrative for this house type and individual properties may differ. Please check with your Sales Adviser in respect of individual properties. We give maximum dimensions within each room which includes areas of fixtures and fittings including fitted furniture. These dimensions should not be used for carpet or flooring sizes, appliance spaces or items of furniture. All images, photographs and dimensions are not intended to be relied upon for, nor to form part of, any contract unless specifically incorporated in writing into the contract.

BDW/FL/JULY25

THE HOLDEN

FOUR BEDROOM HOME



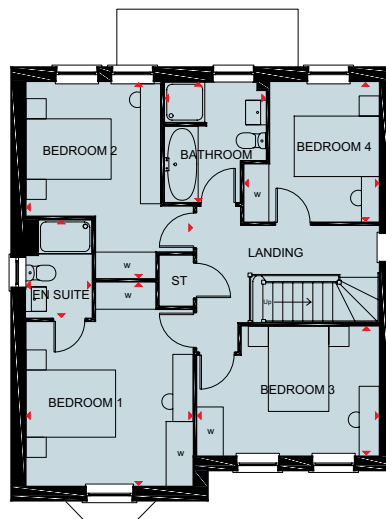
Ground Floor

Lounge	5797 x 3723 mm	19'0" x 12'3"
Kitchen/Dining	6142 x 4685 mm	20'2" x 15'4"
Study	2881 x 2361 mm	9'6" x 7'9"
Utility	2545 x 1588 mm	8'4" x 5'3"
WC	1498 x 1588 mm	4'11" x 5'3"

(Approximate dimensions)

Key

B	Boiler	w/m	Washing machine	f/f	Fridge freezer space
ST	Store	d/w	Dishwasher space	t/d	Tumble dryer space



First Floor

Bedroom 1	4538 x 3728 mm	14'11" x 12'3"
En suite	2190 x 1471 mm	7'2" x 4'10"
Bedroom 2	4379 x 3728 mm	14'4" x 12'3"
Bedroom 3	4073 x 2881 mm	13'4" x 9'5"
Bedroom 4	3115 x 3043 mm	10'3" x 10'0"
Bathroom	2689 x 2266 mm	8'10" x 7'5"

(Approximate dimensions)

W	Wardrobe space
◀▶	Dimension location



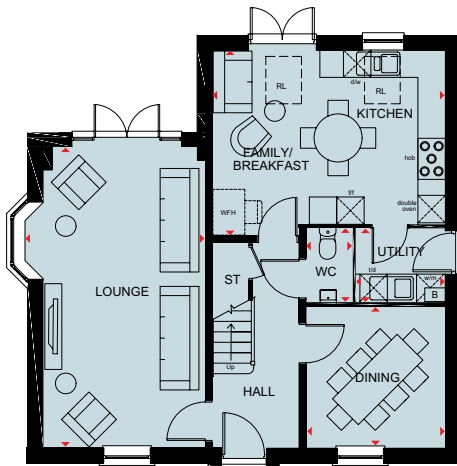
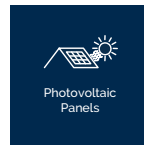
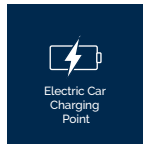
DAVID WILSON HOMES

We are on the New Homes Quality Code register of registered developers. "We" refers to the Barratt Developments PLC group brands including Barratt London, Barratt Homes and David Wilson Homes. All images used are for illustrative purposes. These and the dimensions given are illustrative for this house type and individual properties may differ. Please check with your Sales Adviser in respect of individual properties. We give maximum dimensions within each room which includes areas of fixtures and fittings including fitted furniture. These dimensions should not be used for carpet or flooring sizes, appliance spaces or items of furniture. All images, photographs and dimensions are not intended to be relied upon for, nor to form part of, any contract unless specifically incorporated in writing into the contract.

BDW/FL/JULY25

THE EMERSON

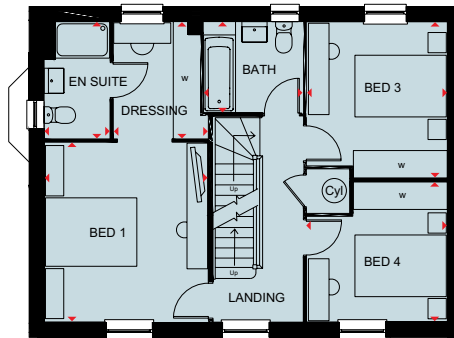
FIVE BEDROOM HOME



Ground Floor

Lounge	6575 x 3965 mm	21'7" x 13'0"
Kitchen/Breakfast/Family	5102 x 4067 mm	16'9" x 13'4"
Utility	1950 x 1613 mm	6'4" x 5'4"
Dining	3084 x 3052 mm	10'1" x 10'0"
WC	1613 x 1013 mm	5'4" x 3'4"

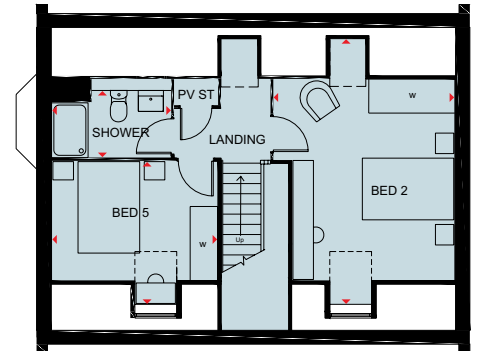
(Approximate dimensions)



First Floor

Bedroom 1	3926 x 3574 mm	12'10" x 11'8"
Dressing	2560 x 2055 mm	8'4" x 6'8"
En suite	2560 x 1435 mm	8'4" x 4'8"
Bedroom 3	3418 x 3077 mm	11'2" x 10'1"
Bedroom 4	3077 x 3063 mm	10'1" x 10'0"
Bathroom	2142 x 1991 mm	7'0" x 6'6"

(Approximate dimensions)



Second Floor

Bedroom 2	5283 x 3962 mm	17'4" x 13'0"
Bedroom 5	3634 x 3082 mm	11'11" x 10'1"
Shower	2606 x 1470 mm	8'6" x 4'9"

(Approximate dimensions)

Key

B	Boiler	w/m	Washing machine	f/f	Fridge freezer space	W	Wardrobe space	◀▶	Dimension location
ST	Store	d/w	Dishwasher space	t/d	Tumble dryer space	WFH	Working from home space		

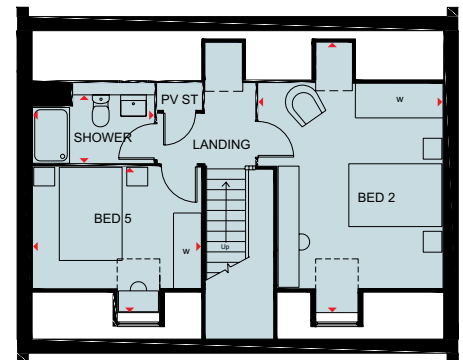
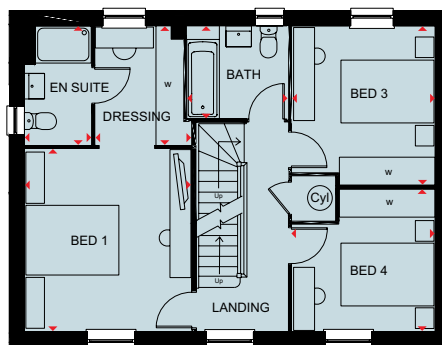
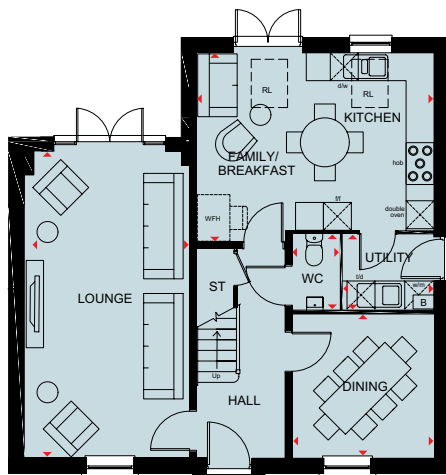
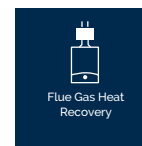
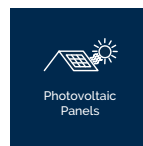
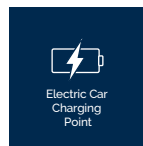


DAVID WILSON HOMES

We are on the New Homes Quality Code register of registered developers. "We" refers to the Barratt Developments PLC group brands including Barratt London, Barratt Homes and David Wilson Homes. All images used are for illustrative purposes. These and the dimensions given are illustrative for this house type and individual properties may differ. Please check with your Sales Adviser in respect of individual properties. We give maximum dimensions within each room which includes areas of fixtures and fittings including fitted furniture. These dimensions should not be used for carpet or flooring sizes, appliance spaces or items of furniture. All images, photographs and dimensions are not intended to be relied upon for, nor to form part of, any contract unless specifically incorporated in writing into the contract. BDW/FL/JULY25

THE EMERSON

FIVE BEDROOM HOME



Ground Floor

Lounge	6575 x 3568 mm	21'7" x 11'8"
Kitchen/Breakfast/Family	5102 x 4067 mm	16'9" x 13'4"
Utility	1950 x 1613 mm	6'4" x 5'4"
Dining	3084 x 3052 mm	10'1" x 10'0"
WC	1613 x 1013 mm	5'4" x 3'4"

(Approximate dimensions)

First Floor

Bedroom 1	3926 x 3574 mm	12'10" x 11'8"
Dressing	2560 x 2055 mm	8'4" x 6'8"
En suite	2560 x 1435 mm	8'4" x 4'8"
Bedroom 3	3418 x 3077 mm	11'2" x 10'1"
Bedroom 4	3077 x 3063 mm	10'1" x 10'0"
Bathroom	2142 x 1991 mm	7'0" x 6'6"

(Approximate dimensions)

Second Floor

Bedroom 2	5283 x 3962 mm	17'4" x 13'0"
Bedroom 5	3634 x 3082 mm	11'11" x 10'1"
Shower	2606 x 1470 mm	8'6" x 4'9"

(Approximate dimensions)

Key

B	Boiler	w/m	Washing machine	f/f	Fridge freezer space	W	Wardrobe space	◀▶	Dimension location
ST	Store	d/w	Dishwasher space	t/d	Tumble dryer space	WFH	Working from home space		



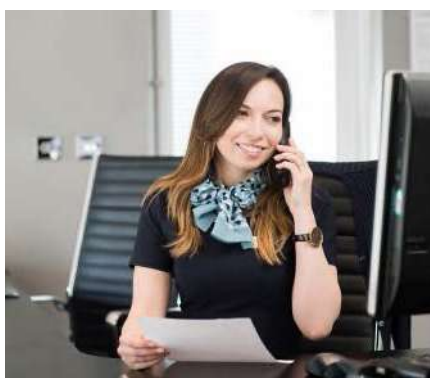
DAVID WILSON HOMES

We are on the New Homes Quality Code register of registered developers. "We" refers to the Barratt Developments PLC group brands including Barratt London, Barratt Homes and David Wilson Homes. All images used are for illustrative purposes. These and the dimensions given are illustrative for this house type and individual properties may differ. Please check with your Sales Adviser in respect of individual properties. We give maximum dimensions within each room which includes areas of fixtures and fittings including fitted furniture. These dimensions should not be used for carpet or flooring sizes, appliance spaces or items of furniture. All images, photographs and dimensions are not intended to be relied upon for, nor to form part of, any contract unless specifically incorporated in writing into the contract.

BDW/FL/JULY25

NEW HOMES

QUALITY CODE



Housebuilders and developers who build new homes will be expected to register with the [New Homes Quality Board](#) (NHQB). As long as a housebuilder or developer has followed the correct registration process, including completing the necessary training, introducing a complaints procedure, and following other processes and procedures that are needed to meet the requirements of this New Homes Quality Code (the code), they will become a registered developer.

Registered developers agree to follow the code and the New Homes Ombudsman Service, including accepting the decisions of the New Homes Ombudsman in relation to dealings with customers. If a registered developer does not meet the required standards, or fails to accept and act in line with the decisions of the New Homes Ombudsman, they may have action taken against them, including being removed from the register of registered developers.

The code sets out the requirements that registered developers must meet. The code may be updated from time to time to reflect changes to industry best practice as well as the decisions of the New Homes Ombudsman Service.

All homes built by registered developers must meet building-safety and other regulations. All registered developers should aim to make sure there are no snags or defects in their properties before the keys are handed over to a customer. If there are any snags or defects, these should be put right within the agreed timescales.

What the code covers

For the purposes of this code, 'customer' means a person who is buying or intends to buy a new home which they will live in or give to another person. (If a new home is being bought in joint names, 'the customer' includes all the joint customers.) However, the New Homes Quality Board have also started work to consider other groups

of customers and what they should be able to expect from a new home. This includes shared owners and people who are buying a new home to let to other people. Any changes the New Homes Quality Board make to the code to reflect the needs of other groups of customers will be developed through consultation, and they will continually assess and review the effectiveness of the code, and any new laws or regulations that apply. Other areas which are not covered by the code are claims for loss of property value or blight (where a property falls in value or becomes difficult to sell because of major public work in the area), personal injury or claims that are not covered by the scheme rules of the New Homes Ombudsman Service.





DAVID WILSON HOMES

WHERE QUALITY LIVES