



AFON LAS

PLASDŴR



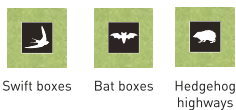


AFON LAS
PLASDŴR

SUSTAINABILITY FEATURES



THIS DEVELOPMENT ALSO FEATURES



BCP Bin Collection Point

VP Visitor Parking

■ Garden Sheds

★ Sales Offices & Show Homes



BARRATT
HOMES

barratthomes.co.uk



DAVID WILSON HOMES
WHERE QUALITY LIVES

dwh.co.uk

KEY

Archford	3 bedroom home
Hadley	3 bedroom home
Blyford	3 bedroom home
Cannington	3 bedroom home
Cannington Special	3 bedroom home
Parkin	3 bedroom home
Parkin Special	3 bedroom home
Kirkdale	4 bedroom home
Cornell	4 bedroom home
Meriden	4 bedroom home
Exeter	4 bedroom home
Avondale	4 bedroom home
Holden	4 bedroom home
Winstone	4 bedroom home
Buckingham	5 bedroom home

● Affordable Housing

BCP Bin Collection Point

VP Visitor Parking

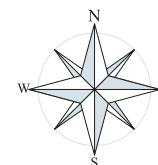
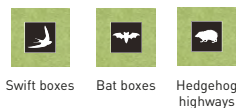
■ Garden Sheds

★ Sales Offices & Show Homes

SUSTAINABILITY FEATURES

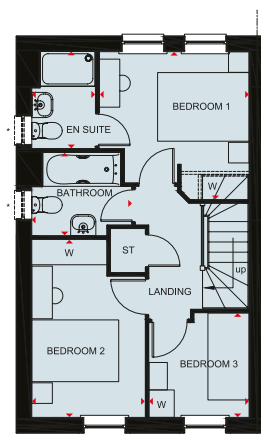
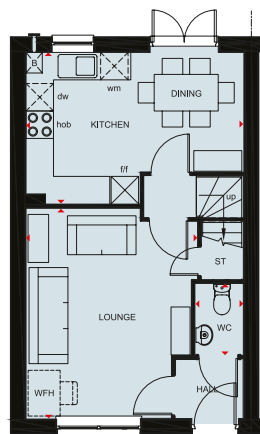
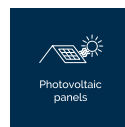
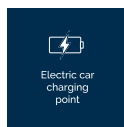


THIS DEVELOPMENT ALSO FEATURES



THE ARCHFORD

THREE BEDROOM TERRACED HOME



Ground Floor

Lounge	4599 x 3746 mm	15'1" x 12'3"
Kitchen/Dining	4745 x 3310 mm	15'7" x 10'10"
WC	1054 x 1561 mm	3'5" x 5'1"

First Floor

Bedroom 1	3277 x 3229 mm	10'9" x 10'7"
En suite	1385 x 2119 mm	4'7" x 6'11"
Bedroom 2	2476 x 3887 mm	8'1" x 12'9"
Bedroom 3	2186 x 2281 mm	7'2" x 7'6"
Bathroom	2181 x 1815 mm	7'2" x 5'11"

* optional window refer to sales adviser for individual plots

Key

B	Boiler	wm	Washing machine space	dw	Dishwasher space	W	Wardrobe space
ST	Store	f/f	Fridge/freezer space	WFH	Working from home space	◀▶	Dimension location



Scan here for more details



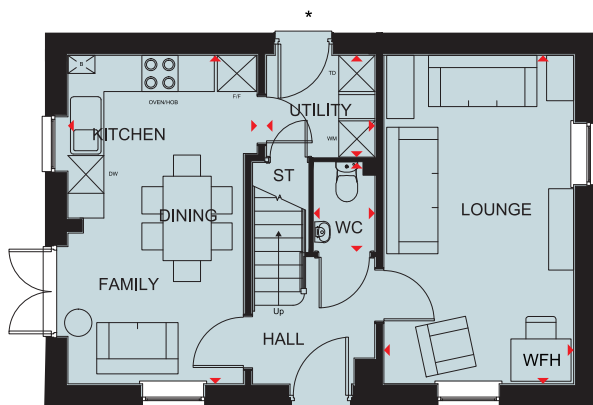
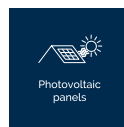
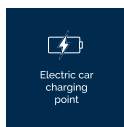
DAVID WILSON HOMES

We are on the New Homes Quality Code register of registered developers. "We" refers to the Barratt Developments PLC group brands including Barratt London, Barratt Homes and David Wilson Homes. All images used are for illustrative purposes. The images and the dimensions given are illustrative for this house type and individual properties may differ. Please check with your Sales Adviser in respect of individual properties. We give maximum dimensions within each room which includes areas of fixtures and fittings including fitted furniture. These dimensions should not be used for carpet or flooring sizes, appliance spaces or items of furniture. All images, photographs, dimensions and energy efficiency features depicted are not intended to be relied upon for, nor to form part of, any contract unless specifically incorporated in writing into the contract.

BDWAPR25

THE HADLEY

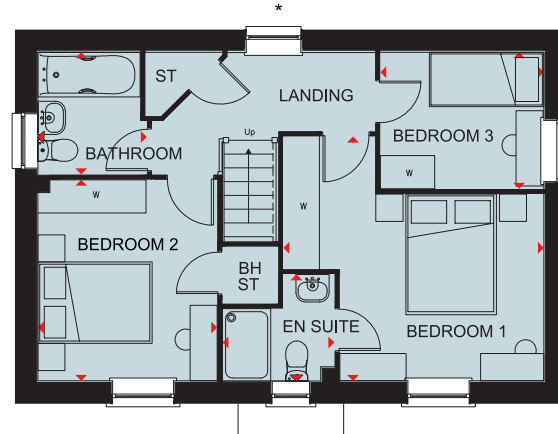
THREE BEDROOM DETACHED HOME



Ground Floor

Lounge	3148 x 5450 mm	10'4" x 17'11"
Kitchen/Family/Dining	3131 x 5450 mm	10'3" x 17'11"
Utility	1816 x 1687 mm	5'11" x 5'6"
WC	1013 x 1485 mm	3'4" x 4'10"

* Door optional - speak to a Sales Adviser for details on individual plots.



First Floor

Bedroom 1	4324 x 4053 mm	14'2" x 13'4"
En Suite	1856 x 1771 mm	6'1" x 5'9"
Bedroom 2	2978 x 3436 mm	9'9" x 11'3"
Bedroom 3	2713 x 2260 mm	8'11" x 7'5"
Bathroom	2025 x 1925 mm	6'8" x 6'4"

* Window optional - speak to a Sales Adviser for details on individual plots.

Key

B	Boiler	CYL	Cylinder	wm	Washing machine space	f/f	Fridge freezer space	W	Wardrobe space
ST	Store	td	Tumble Dryer space	dw	Dishwasher space	WFH	Working from home space	◄	Dimension location



Scan here for more details



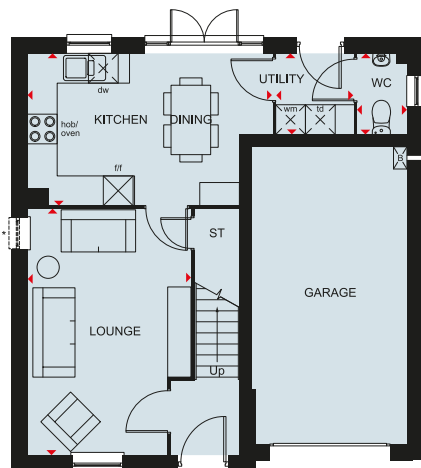
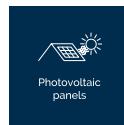
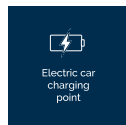
DAVID WILSON HOMES

We are on the New Homes Quality Code register of registered developers. "We" refers to the Barratt Developments PLC group brands including Barratt London, Barratt Homes and David Wilson Homes. All images used are for illustrative purposes. The images and the dimensions given are illustrative for this house type and individual properties may differ. Please check with your Sales Adviser in respect of individual properties. We give maximum dimensions within each room which includes areas of fixtures and fittings including fitted furniture. These dimensions should not be used for carpet or flooring sizes, appliance spaces or items of furniture. All images, photographs, dimensions and energy efficiency features depicted are not intended to be relied upon for, nor to form part of, any contract unless specifically incorporated in writing into the contract.

BDWAUG25

THE BLYFORD

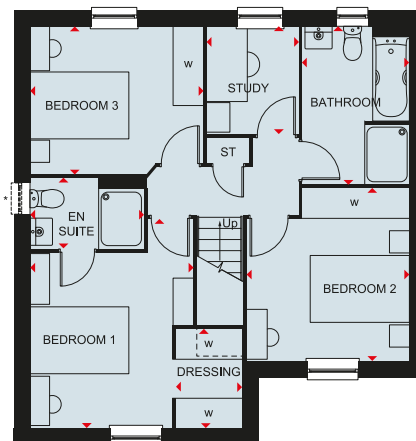
THREE BEDROOM HOME



Ground Floor

Lounge	3282 x 4954 mm	10'10" x 16'3"
Kitchen/Dining	3063 x 4933 mm	10'1" x 16'2"
Utility	1551 x 1641 mm	5'1" x 5'5"
WC	995 x 1643 mm	3'3" x 5'5"
Garage	6050 x 3212 mm	19'10" x 10'6"

*Window may be omitted on certain plots.
Speak to a Sales Adviser for details on individual plots.



First Floor

Bedroom 1	3287 x 4216 mm	10'10" x 13'10"
En suite	1413 x 2291 mm	4'8" x 7'6"
Dressing	1336 x 1987 mm	4'5" x 6'6"
Bedroom 2	3287 x 3479 mm	10'9" x 11'5"
Bedroom 3	3492 x 2977 mm	11'5" x 9'9"
Bathroom	2155 x 3188 mm	7'1" x 10'6"
Study	2179 x 1838 mm	7'2" x 6'0"

* Window may be omitted on certain plots.
Speak to a Sales Adviser for details on individual plots.

Key

B	Boiler	BH	Bulkhead	wm	Washing machine space	f/f	Fridge freezer space	WFH	Working from home space	◀▶	Dimension location
ST	Store	BH/ST	Bulkhead Store	dw	Dishwasher space	td	Tumble dryer space	W	Wardrobe space		



Scan here for more details



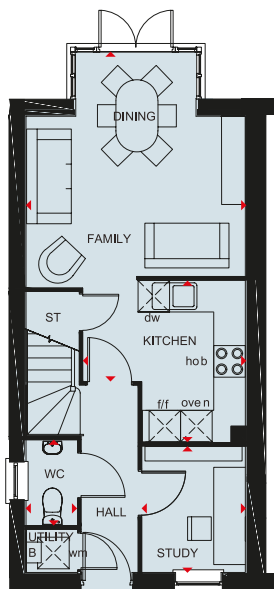
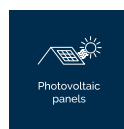
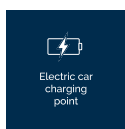
DAVID WILSON HOMES

We are on the New Homes Quality Code register of registered developers. "We" refers to the Barratt Developments PLC group brands including Barratt London, Barratt Homes and David Wilson Homes. All images used are for illustrative purposes. The images and the dimensions given are illustrative for this house type and individual properties may differ. Please check with your Sales Adviser in respect of individual properties. We give maximum dimensions within each room which includes areas of fixtures and fittings including fitted furniture. These dimensions should not be used for carpet or flooring sizes, appliance spaces or items of furniture. All images, photographs, dimensions and energy efficiency features depicted are not intended to be relied upon for, nor to form part of, any contract unless specifically incorporated in writing into the contract.

BDWAPR25

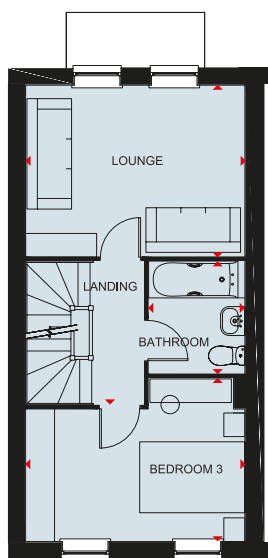
THE CANNINGTON

THREE BEDROOM HOME



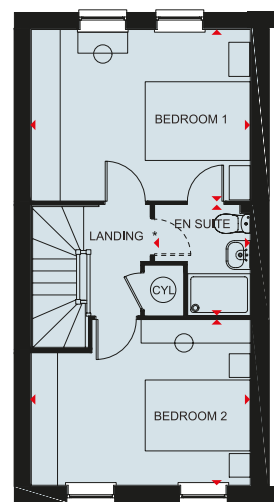
Ground Floor

Family/Dining	6330 x 4162mm	20'9" x 13'8"
Kitchen	3089 x 3070 mm	10'2" x 10'1"
Study	2394 x 1960 mm	7'10" x 6'5"
WC	1613 x 974 mm	5'4" x 3'2"



First Floor

Lounge	4168 x 3252 mm	13'8" x 10'8"
Bedroom 3	4168 x 3099 mm	13'8" x 10'2"
Bathroom	2138 x 1830 mm	6'11" x 6'0"



Second Floor

Bedroom 1	4168 x 3249 mm	13'8" x 10'8"
En Suite	2100 x 1827 mm	6'11" x 6'0"
Bedroom 2	4168 x 3137 mm	13'8" x 10'4"

Key

B	Boiler	CYL	Cylinder	wm	Washing machine space	◀▶	Dimension location
ST	Store	f/f	Fridge/freezer space	dw	Dishwasher space		



Scan here for more details



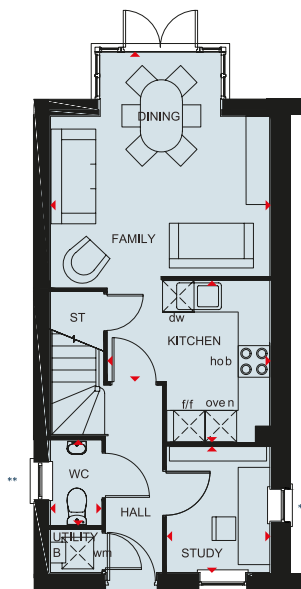
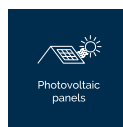
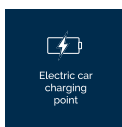
DAVID WILSON HOMES

We are on the New Homes Quality Code register of registered developers. "We" refers to the Barratt Developments PLC group brands including Barratt London, Barratt Homes and David Wilson Homes. All images used are for illustrative purposes. The images and the dimensions given are illustrative for this house type and individual properties may differ. Please check with your Sales Adviser in respect of individual properties. We give maximum dimensions within each room which includes areas of fixtures and fittings including fitted furniture. These dimensions should not be used for carpet or flooring sizes, appliance spaces or items of furniture. All images, photographs, dimensions and energy efficiency features depicted are not intended to be relied upon for, nor to form part of, any contract unless specifically incorporated in writing into the contract.

BDWAPR25

THE CANNINGTON SPECIAL

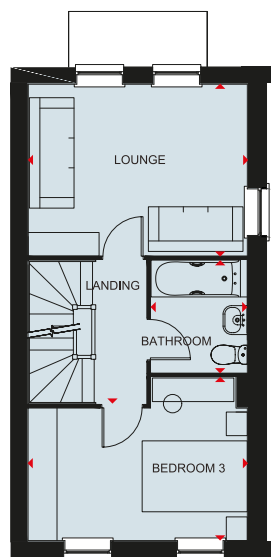
THREE BEDROOM HOME



Ground Floor

Family/Dining	4424 x 4162mm	14'10" x 13'8"
Kitchen	3076 x 3070 mm	10'1" x 10'1"
Study	2394 x 1959 mm	7'10" x 6'5"
WC	1614 x 961 mm	5'4" x 3'2"

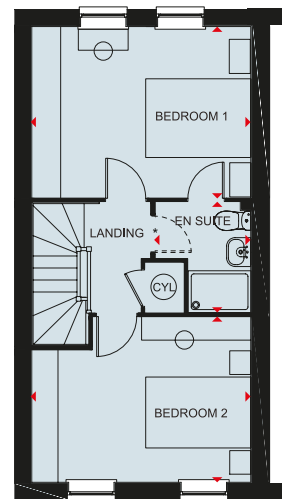
** Windows may differ on certain plots.
Speak to a Sales Adviser for details on individual plots.



First Floor

Lounge	4168 x 3249 mm	13'8" x 10'8"
Bedroom 3	4168 x 3104 mm	13'8" x 10'2"
Bathroom	2139 x 1831 mm	7'0" x 6'0"

** Windows may differ on certain plots.
Speak to a Sales Adviser for details on individual plots.



Second Floor

Bedroom 1	4168 x 3249 mm	13'8" x 10'8"
En Suite	2101 x 1828 mm	6'11" x 6'0"
Bedroom 2	4168 x 3137 mm	13'8" x 10'4"

* En suite door may be omitted on certain plots.
Speak to a Sales Adviser for details on individual plots.

Key

B Boiler	CYL Cylinder	wm Washing machine space	◀▶ Dimension location
ST Store	f/f Fridge/freezer space	dw Dishwasher space	



Scan here for more details



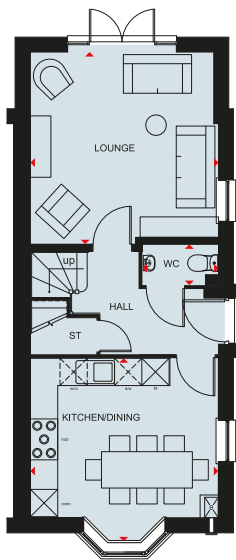
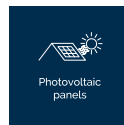
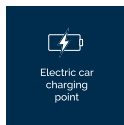
DAVID WILSON HOMES

We are on the New Homes Quality Code register of registered developers. "We" refers to the Barratt Developments PLC group brands including Barratt London, Barratt Homes and David Wilson Homes. All images used are for illustrative purposes. The images and the dimensions given are illustrative for this house type and individual properties may differ. Please check with your Sales Adviser in respect of individual properties. We give maximum dimensions within each room which includes areas of fixtures and fittings including fitted furniture. These dimensions should not be used for carpet or flooring sizes, appliance spaces or items of furniture. All images, photographs, dimensions and energy efficiency features depicted are not intended to be relied upon for, nor to form part of, any contract unless specifically incorporated in writing into the contract.

BDWAPR25

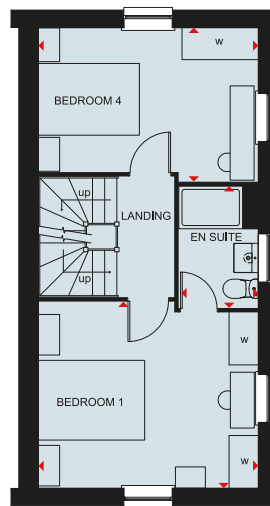
THE PARKIN

FOUR BEDROOM HOME



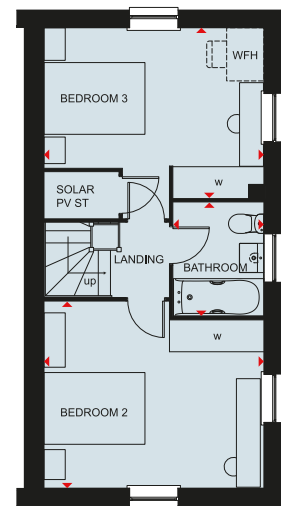
Ground Floor

Lounge	4138 x 4227 mm	13'7" x 13'10"
Kitchen/Dining	4133 x 4033 mm	13'7" x 13'3"
W.C.	1673 x 895 mm	5'6" x 2'11"



First Floor

Bedroom 1	4138 x 3508 mm	13'7" x 11'6"
En suite	1495 x 2289 mm	4'11" x 7'6"
Bedroom 4	4138 x 2893 mm	13'7" x 9'6"



Second Floor

Bedroom 2	4138 x 3508 mm	13'7" x 11'6"
Bedroom 3	4138 x 3202 mm	13'7" x 10'6"
Bathroom	1700 x 2131 mm	5'7" x 7'0"

Key

B	Boiler	wm	Washing machine space	f/f	Fridge freezer space	WFH	Working from home space	◀▶	Dimension location
ST	Store	dw	Dishwasher space	td	Tumble dryer space	W	Wardrobe space		



Scan here for more details



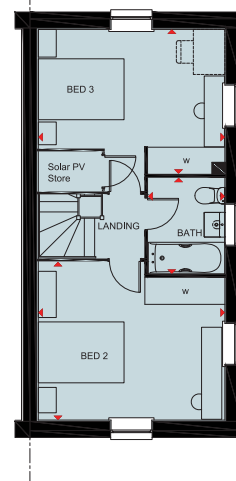
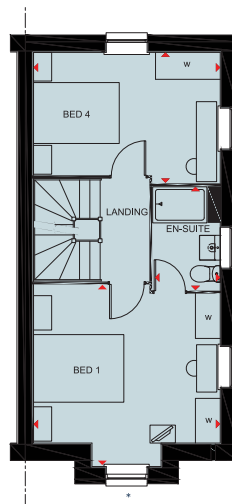
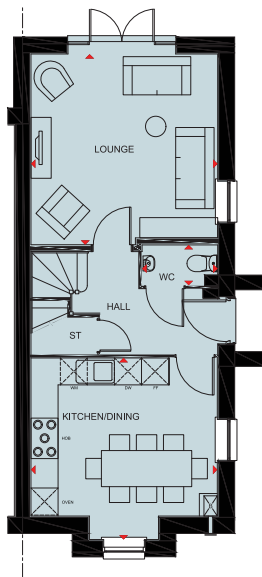
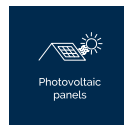
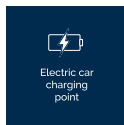
DAVID WILSON HOMES

We are on the New Homes Quality Code register of registered developers. "We" refers to the Barratt Developments PLC group brands including Barratt London, Barratt Homes and David Wilson Homes. All images used are for illustrative purposes. The images and the dimensions given are illustrative for this house type and individual properties may differ. Please check with your Sales Adviser in respect of individual properties. We give maximum dimensions within each room which includes areas of fixtures and fittings including fitted furniture. These dimensions should not be used for carpet or flooring sizes, appliance spaces or items of furniture. All images, photographs, dimensions and energy efficiency features depicted are not intended to be relied upon for, nor to form part of, any contract unless specifically incorporated in writing into the contract.

BDWAPR25

THE PARKIN SPECIAL

FOUR BEDROOM HOME



Ground Floor

Lounge	4138 x 4227 mm	13'7" x 13'10"
Kitchen/Dining	4133 x 4028 mm	13'7" x 13'3"
W.C	1673 x 896 mm	5'6" x 2'11"

First Floor

Bedroom 1	4138 x 4028 mm	13'7" x 13'3"
En suite	1448 x 2290 mm	4'9" x 7'6"
Bedroom 4	4138 x 2893 mm	13'7" x 9'6"

Second Floor

Bedroom 2	4138 x 3508 mm	13'7" x 11'6"
Bedroom 3	4138 x 3202 mm	13'7" x 10'6"
Bathroom	1695 x 2131 mm	5'7" x 7'0"

* Bay arrangement to Plot 1 differs, please speak to a Sales Adviser for details on this plot.

Key

B	Boiler	wm	Washing machine space	f/f	Fridge freezer space	WFH	Working from home space	◀▶	Dimension location
ST	Store	dw	Dishwasher space	td	Tumble dryer space	W	Wardrobe space		



Scan here for more details



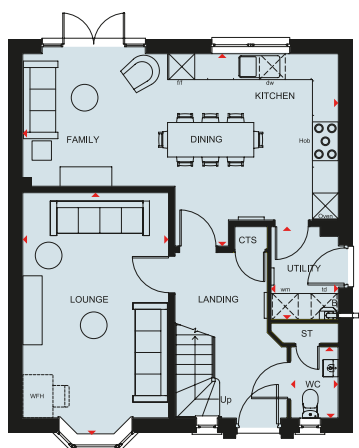
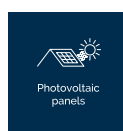
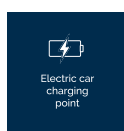
DAVID WILSON HOMES

We are on the New Homes Quality Code register of registered developers. "We" refers to the Barratt Developments PLC group brands including Barratt London, Barratt Homes and David Wilson Homes. All images used are for illustrative purposes. The images and the dimensions given are illustrative for this house type and individual properties may differ. Please check with your Sales Adviser in respect of individual properties. We give maximum dimensions within each room which includes areas of fixtures and fittings including fitted furniture. These dimensions should not be used for carpet or flooring sizes, appliance spaces or items of furniture. All images, photographs, dimensions and energy efficiency features depicted are not intended to be relied upon for, nor to form part of, any contract unless specifically incorporated in writing into the contract.

BDWAPR25

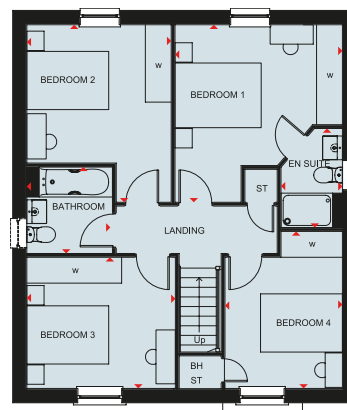
KIRKDALE

FOUR BEDROOM DETACHED HOME



Ground Floor

Lounge	3380 x 5617 mm	11'1" x 18'5"
Kitchen/Family/		
Dining	7318 x 4460 mm	24'0" x 14'8"
Utility	1561 x 2150 mm	5'1" x 7'1"
WC	1095 x 1650 mm	3'7" x 5'5"



First Floor

Bedroom 1	3885 x 4119 mm	12'9" x 13'6"
En Suite	1425 x 2300 mm	4'8" x 7'7"
Bedroom 2	3350 x 4119 mm	11'0" x 13'6"
Bedroom 3	3447 x 3043 mm	11'4" x 10'0"
Bedroom 4	2725 x 3643 mm	8'11" x 12'0"
Bathroom	1987 x 2010 mm	6'6" x 6'7"

Key

B Boiler	BH ST Bulkhead Store	dw Dishwasher space	td Tumble dryer space	W Wardrobe space
ST Store	wm Washing machine space	f/f Fridge freezer space	WFH Working from home space	◀▶ Dimension location



Scan here for more details



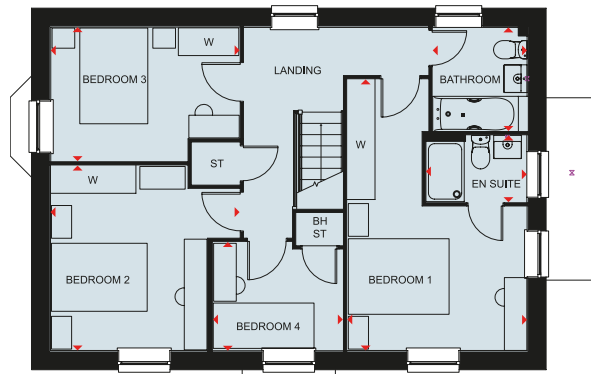
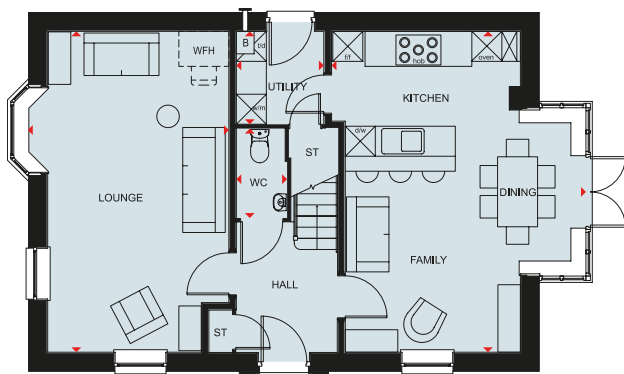
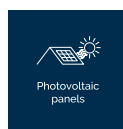
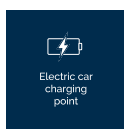
DAVID WILSON HOMES

We are on the New Homes Quality Code register of registered developers. "We" refers to the Barratt Developments PLC group brands including Barratt London, Barratt Homes and David Wilson Homes. All images used are for illustrative purposes. The images and the dimensions given are illustrative for this house type and individual properties may differ. Please check with your Sales Adviser in respect of individual properties. We give maximum dimensions within each room which includes areas of fixtures and fittings including fitted furniture. These dimensions should not be used for carpet or flooring sizes, appliance spaces or items of furniture. All images, photographs, dimensions and energy efficiency features depicted are not intended to be relied upon for, nor to form part of, any contract unless specifically incorporated in writing into the contract.

BDWAPR25

CORNELL

FOUR BEDROOM HOME



Ground Floor

Lounge	6417 x 4003 mm	21'1" x 13'2"
Kitchen/Family/	6417 x 5063 mm	21'1" x 16'7"
Dining	1858 x 1749 mm	6'1" x 5'9"
Utility	1786 x 1014 mm	5'10" x 3'4"
WC		

First Floor

Bedroom 1	5381 x 3569 mm	17'8" x 11'8"
En suite	2003 x 1325 mm	6'7" x 4'4"
Bedroom 2	3670 x 3754 mm	12'1" x 12'4"
Bedroom 3	3749 x 2659 mm	12'4" x 8'9"
Bedroom 4	2578 x 2158 mm	8'5" x 7'1"
Bathroom	2055 x 1873 mm	6'9" x 6'2"

Key

B	Boiler	wm	Washing machine space	f/f	Fridge freezer space	WFH	Working from home space	BH/ST	Bulkhead Store	◀▶	Dimension location
ST	Store	dw	Dishwasher space	td	Tumble dryer space	BH	Bulkhead	W	Wardrobe space		



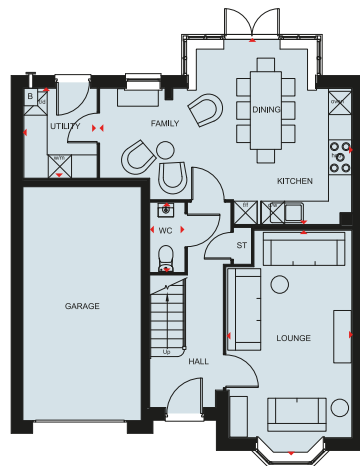
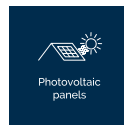
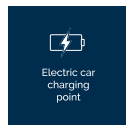
Scan here for more details



DAVID WILSON HOMES

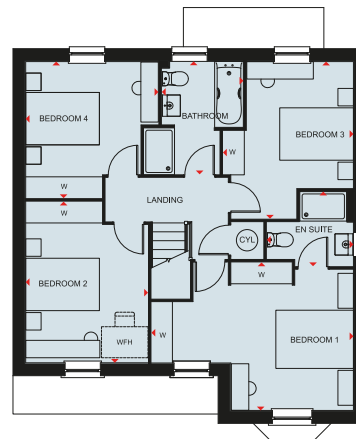
THE MERIDEN

FOUR BEDROOM HOME



Ground Floor

Lounge	3233 x 5740 mm	10'7" x 18'10"
Kitchen/Family/Dining	6483 x 4768 mm	21'3" x 15'7"
Utility	1875 x 2302 mm	6'2" x 7'7"
WC	895 x 1786 mm	2'11" x 5'10"
Garage	3073 x 6075 mm	10'1" x 19'11"



First Floor

Bedroom 1	5206 x 3815 mm	17'1" x 12'6"
En suite	2233 x 1923 mm	7'4" x 6'4"
Bedroom 2	3153 x 4154 mm	10'4" x 13'8"
Bedroom 3	3363 x 4049 mm	11'10" x 13'3"
Bedroom 4	3421 x 3520 mm	11'3" x 11'7"
Bathroom	2100 x 2911 mm	6'11" x 9'6"

Key

B	Boiler	wm	Washing machine space	f/f	Fridge/freezer space	WFH	Working from home space	◄►	Dimension location
ST	Store	dw	Dishwasher space	td	Tumble dryer space	w	Wardrobe space		



Scan here for more details



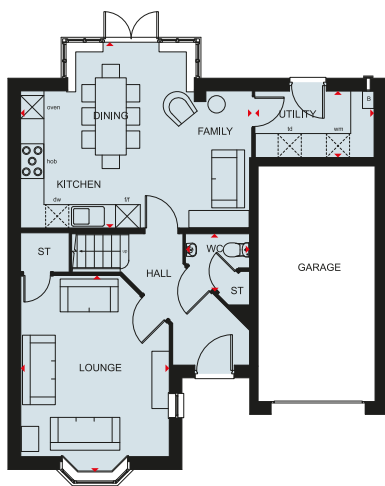
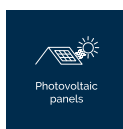
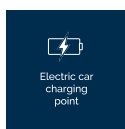
DAVID WILSON HOMES

We are on the New Homes Quality Code register of registered developers. "We" refers to the Barratt Developments PLC group brands including Barratt London, Barratt Homes and David Wilson Homes. All images used are for illustrative purposes. The images and the dimensions given are illustrative for this house type and individual properties may differ. Please check with your Sales Adviser in respect of individual properties. We give maximum dimensions within each room which includes areas of fixtures and fittings including fitted furniture. These dimensions should not be used for carpet or flooring sizes, appliance spaces or items of furniture. All images, photographs, dimensions and energy efficiency features depicted are not intended to be relied upon for, nor to form part of, any contract unless specifically incorporated in writing into the contract.

BDWAPR25

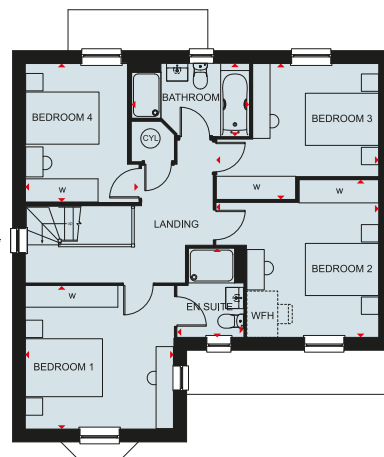
EXETER

FOUR BEDROOM HOME



Ground Floor

Lounge	5068 x 3845 mm	16'8" x 12'7"
Kitchen/Family	6050 x 4835 mm	19'10" x 15'10"
Dining	3041 x 1697 mm	10'0" x 5'7"
Utility	1690 x 1513 mm	5'7" x 5'0"
WC		



First Floor

Bedroom 1	3850 x 3719 mm	12'8" x 12'2"
En suite	2323 x 1737 mm	7'7" x 5'8"
Bedroom 2	4208 x 4083 mm	13'10" x 13'5"
Bedroom 3	4208 x 3520 mm	13'10" x 11'7"
Bedroom 4	3586 x 2935 mm	11'9" x 9'8"
Bathroom	3047 x 1887 mm	10'0" x 6'2"

* Window may be omitted on certain plots.
Speak to a Sales Adviser for details on individual plots.

Key

B Boiler	CYL Cylinder	dw Dishwasher space	ld Tumble dryer space	W Wardrobe space
ST Store	wm Washing machine space	f/f Fridge freezer space	WFH Working from home space	◀▶ Dimension location



Scan here for more details



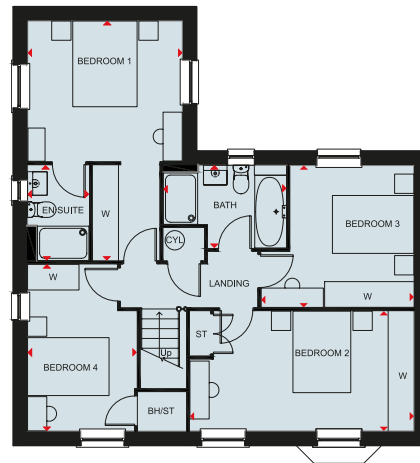
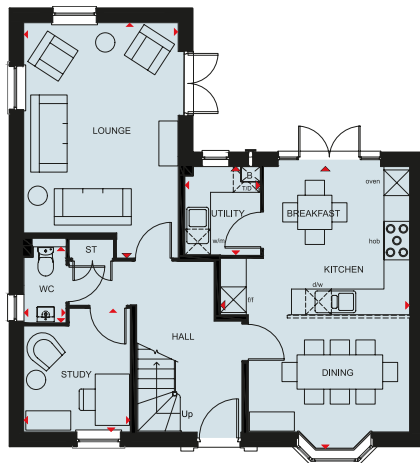
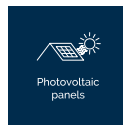
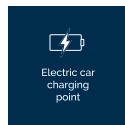
DAVID WILSON HOMES

We are on the New Homes Quality Code register of registered developers. "We" refers to the Barratt Developments PLC group brands including Barratt London, Barratt Homes and David Wilson Homes. All images used are for illustrative purposes. The images and the dimensions given are illustrative for this house type and individual properties may differ. Please check with your Sales Adviser in respect of individual properties. We give maximum dimensions within each room which includes areas of fixtures and fittings including fitted furniture. These dimensions should not be used for carpet or flooring sizes, appliance spaces or items of furniture. All images, photographs, dimensions and energy efficiency features depicted are not intended to be relied upon for, nor to form part of, any contract unless specifically incorporated in writing into the contract.

BDWAPR25

THE AVONDALE

FOUR BEDROOM HOME



Ground Floor

Lounge	5487 x 3605 mm	18'0" x 11'10"
Kitchen/Breakfast/Dining	6573 x 4415 mm	21'7" x 14'6"
Utility	2060 x 1761 mm	6'9" x 5'9"
Study	2877 x 2488 mm	9'5" x 8'2"
WC	1767 x 980 mm	5'10" x 3'3"

First Floor

Bedroom 1	5584 x 3605 mm	18'3" x 11'10"
Ensuite	2222 x 1432 mm	7'3" x 4'8"
Bedroom 2	5205 x 2792 mm	17'1" x 9'2"
Bedroom 3	3563 x 3308 mm	11'8" x 10'10"
Bedroom 4	3853 x 2547 mm	12'7" x 8'4"
Bathroom	2869 x 1927 mm	9'5" x 6'4"

Key

B	Boiler	f/f	Fridge/freezer space	wm	Washing machine space	W	Wardrobe space
ST	Store	dw	Dishwasher space	td	Tumble dryer space	↔	Dimension location



Scan here for more details



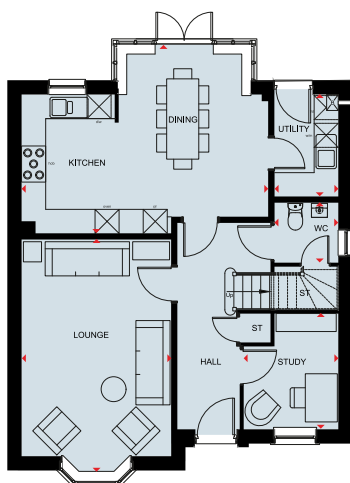
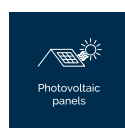
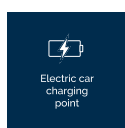
DAVID WILSON HOMES

We are on the New Homes Quality Code register of registered developers. "We" refers to the Barratt Developments PLC group brands including Barratt London, Barratt Homes and David Wilson Homes. All images used are for illustrative purposes. The images and the dimensions given are illustrative for this house type and individual properties may differ. Please check with your Sales Adviser in respect of individual properties. We give maximum dimensions within each room which includes areas of fixtures and fittings including fitted furniture. These dimensions should not be used for carpet or flooring sizes, appliance spaces or items of furniture. All images, photographs, dimensions and energy efficiency features depicted are not intended to be relied upon for, nor to form part of, any contract unless specifically incorporated in writing into the contract.

BDWAPR25

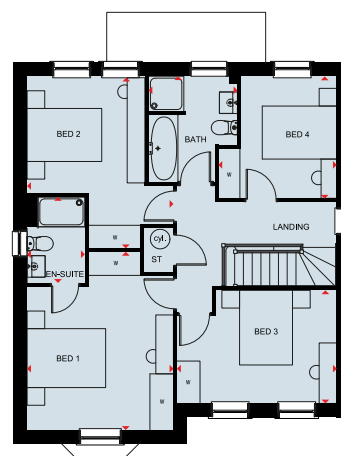
HOLDEN

FOUR BEDROOM DETACHED HOME



Ground Floor

Lounge	3723 x 5777 mm	12'3" x 18'11"
Kitchen/Dining	6142 x 4745 mm	20'2" x 15'7"
Study	2361 x 2881 mm	7'9" x 9'6"
Utility	1588 x 2545 mm	5'3" x 8'4"
WC	1588 x 1498 mm	5'3" x 4'11"



First Floor

Bedroom 1	3728 x 4538 mm	12'3" x 14'11"
En Suite	1470 x 2190 mm	4'10" x 7'2"
Bedroom 2	3729 x 4379 mm	12'3" x 14'4"
Bedroom 3	4074 x 2882 mm	13'4" x 9'5"
Bedroom 4	3019 x 3116 mm	9'11" x 10'3"
Bathroom	2266 x 2689 mm	7'5" x 8'10"

Key

B	Boiler	W	Wardrobe space	wm	Washing machine space	CYL	Cylinder	◀▶	Dimension location
ST	Store	f/f	Fridge/freezer space	dw	Dishwasher space	td	Tumble dryer		



Scan here for more details



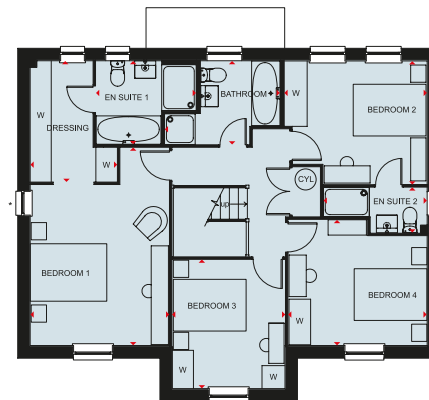
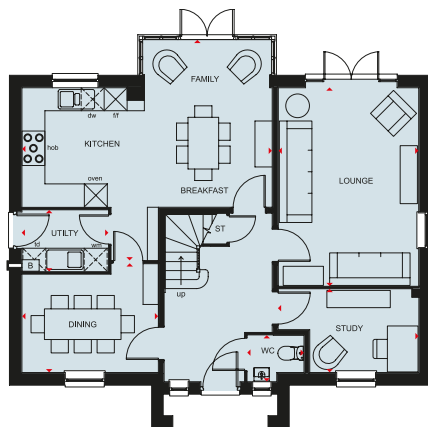
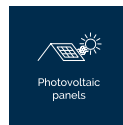
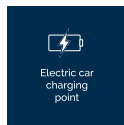
DAVID WILSON HOMES

We are on the New Homes Quality Code register of registered developers. "We" refers to the Barratt Developments PLC group brands including Barratt London, Barratt Homes and David Wilson Homes. All images used are for illustrative purposes. The images and the dimensions given are illustrative for this house type and individual properties may differ. Please check with your Sales Adviser in respect of individual properties. We give maximum dimensions within each room which includes areas of fixtures and fittings including fitted furniture. These dimensions should not be used for carpet or flooring sizes, appliance spaces or items of furniture. All images, photographs, dimensions and energy efficiency features depicted are not intended to be relied upon for, nor to form part of, any contract unless specifically incorporated in writing into the contract.

BDWAPR25

WINSTONE

FOUR BEDROOM DETACHED HOME



Ground Floor

Lounge	3663 x 5169 mm	12'0" x 16'11"
Kitchen/Family/Breakfast	6533 x 5758 mm	21'5" x 18'11"
Dining	3561 x 2844 mm	11'8" x 9'4"
Study	3673 x 2173 mm	12'1" x 7'2"
Utility	2248 x 1591 mm	7'4" x 5'3"
WC	1475 x 1208 mm	4'10" x 4'0"

* Window may not be available on certain plots.
Speak to Sales Adviser for details on individual plans.

Key

B	Boiler	wm	Washing machine space	f/f	Fridge freezer space	W	Wardrobe space
ST	Store	dw	Dishwasher space	td	Tumble dryer space	◀▶	Dimension location

First Floor

Bedroom 1	3622 x 5162 mm	11'10" x 16'11"
Dressing	2263 x 3153 mm	7'5" x 10'4"
En suite 1	2615 x 2180 mm	8'7" x 7'2"
Bedroom 2	3721 x 3216 mm	12'2" x 10'7"
En suite 2	2708 x 1178 mm	8'11" x 3'10"
Bedroom 3	2940 x 3361 mm	9'8" x 11'1"
Bedroom 4	3621 x 3280 mm	11'10" x 10'9"
Bathroom	3014 x 2180 mm	9'10" x 7'2"

* Window may not be available on certain plots.
Speak to Sales Adviser for details on individual plans.



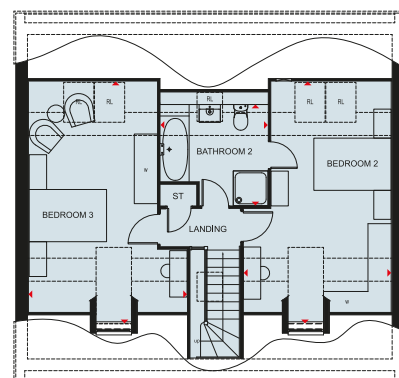
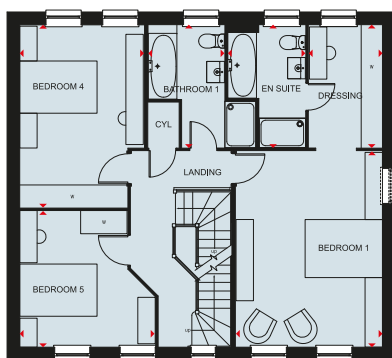
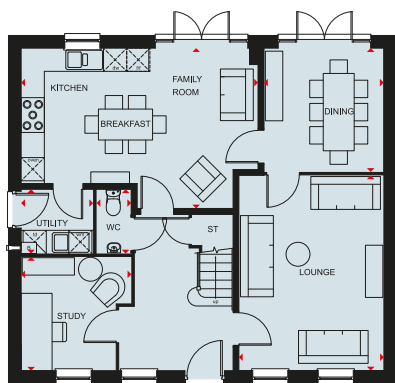
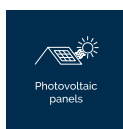
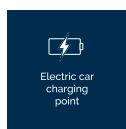
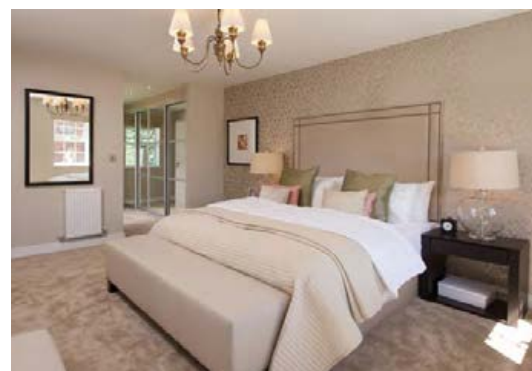
Scan here for more details



DAVID WILSON HOMES

BUCKINGHAM

FIVE BEDROOM HOME



Ground Floor

Lounge	5046 x 3750 mm	16'7" x 12'4"
Kitchen/Family/Breakfast	6125 x 4146 mm	20'1" x 13'7"
Dining	3202 x 3095 mm	10'6" x 10'2"
Study	2941 x 2850 mm	9'8" x 9'4"
Utility	1862 x 1661 mm	6'1" x 5'5"
WC	1661 x 896 mm	5'5" x 2'11"

First Floor

Bedroom 1	5071 x 3792 mm	16'8" x 12'5"
Dressing	3181 x 1906 mm	10'5" x 6'3"
En suite	3181 x 2004 mm	10'5" x 6'7"
Bedroom 4	4726 x 3216 mm	15'6" x 10'7"
Bedroom 5	3504 x 3522 mm	11'6" x 11'7"
Bathroom 1	3181 x 1969 mm	10'5" x 6'5"

* Window may be omitted on certain plots. Speak to a Sales Adviser for details on individual plots

Second Floor

Bedroom 2	6254* x 3812 mm	20'6"* x 12'6"
Bedroom 3	6254* x 4102 mm	20'6"* x 13'5"
Bathroom 2	2776 x 2610* mm	9'1" x 8'7"*

* Overall floor dimension includes lowered ceiling areas

B Boiler
ST Store

CYL Cylinder
wm Washing machine space

dw Dishwasher space
f/f Fridge freezer space

ld Tumble dryer space
W Wardrobe space

RL Roof lights
◀▶ Dimension location



Scan here for more details



DAVID WILSON HOMES

CREATING A SUSTAINABLE COMMUNITY

WHERE FAMILIES AND NATURE CAN THRIVE



Throughout the planning process before starting build, we consider where we can introduce nature and where we can strengthen it.

At David Wilson Homes, we do more than simply craft beautiful homes and desirable developments.

We design and build great places that meet the highest standards, and that promote sustainable, healthy and happy living for our customers.

We know we must give our customers confidence that their homes are designed and built to meet the challenges of the future. We do this through creating places where people and nature can thrive.



dwh.co.uk



DAVID WILSON HOMES
WHERE QUALITY LIVES

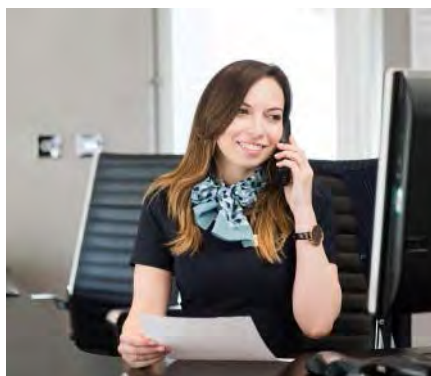
'We', 'our', 'us' refers to the Barratt Developments PLC Group brands including Barratt Homes, David Wilson Homes and Barratt London. Some of the features shown may not be available with every David Wilson home or on every David Wilson development. Please speak to a Sales Adviser for details of the features available on the home and development you are interested in. To find out more about the energy-efficiency and sustainability of our homes visit our website. All images used are for illustrative purposes only. Information correct at time of publishing.

5498676/FEB25



NEW HOMES

QUALITY CODE



Housebuilders and developers who build new homes will be expected to register with the [New Homes Quality Board](#) (NHQB). As long as a housebuilder or developer has followed the correct registration process, including completing the necessary training, introducing a complaints procedure, and following other processes and procedures that are needed to meet the requirements of this New Homes Quality Code (the code), they will become a registered developer.

Registered developers agree to follow the code and the New Homes Ombudsman Service, including accepting the decisions of the New Homes Ombudsman in relation to dealings with customers. If a registered developer does not meet the required standards, or fails to accept and act in line with the decisions of the New Homes Ombudsman, they may have action taken against them, including being removed from the register of registered developers.

The code sets out the requirements that registered developers must meet. The code may be updated from time to time to reflect changes to industry best practice as well as the decisions of the New Homes Ombudsman Service.

All homes built by registered developers must meet building-safety and other regulations. All registered developers should aim to make sure there are no snags or defects in their properties before the keys are handed over to a customer. If there are any snags or defects, these should be put right within the agreed timescales.

What the code covers

For the purposes of this code, 'customer' means a person who is buying or intends to buy a new home which they will live in or give to another person. (If a new home is being bought in joint names, 'the customer' includes all the joint customers.) However, the New Homes Quality Board have also started work to consider other groups

of customers and what they should be able to expect from a new home. This includes shared owners and people who are buying a new home to let to other people. Any changes the New Homes Quality Board make to the code to reflect the needs of other groups of customers will be developed through consultation, and they will continually assess and review the effectiveness of the code, and any new laws or regulations that apply. Other areas which are not covered by the code are claims for loss of property value or blight (where a property falls in value or becomes difficult to sell because of major public work in the area), personal injury or claims that are not covered by the scheme rules of the New Homes Ombudsman Service.





DAVID WILSON HOMES

WHERE QUALITY LIVES

dwh.co.uk