



SAXON GREEN

PETERCHURCH



- **The Burleigh**
2 bedroom bungalow
- **The Belton**
2 bedroom bungalow
- **The Brook**
2 bedroom home
- **The Dore**
3 bedroom home
- **The Esclay**
3 bedroom home
- **The Eckington**
3 bedroom home
- **The Hollinwood Special**
3 bedroom home
- **The Shenton Special**
3 bedroom home
- **The Monnow**
4 bedroom home
- **The Millford**
4 bedroom home
- **The Avondale**
4 bedroom home
- **The Holden**
4 bedroom home
- **The Winstone**
4 bedroom home

Homes With Specific Eligibility Criteria:
Low Cost Home Ownership available



MS Marketing Suite

SH Show Home

S/S Substation

BCP Bin Collection Point

Play Area

New Tree Line

Attenuation Basin

Electric Vehicle Charging
Electric vehicle charging points are included on every home. Please speak to your Sales Adviser for specific plot locations.

Air Source Heat Pumps
All source heat pumps are included in every home. Please speak to your Sales Adviser for more information.

Giving nature a home on this development:

Hedgehog Highway
Selected plots*

Bird Nesting Box
Selected plots*

Bat Box Enclosed Bat Box
Selected plots*

Swift Nesting Brick
Selected plots*

Positioning of our sustainability features are subject to change. Speak to a Sales Adviser for more information.



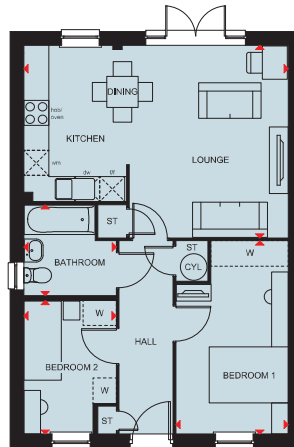
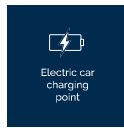
See the Difference at dwh.co.uk



DAVID WILSON HOMES
WHERE QUALITY LIVES

BURLEIGH

TWO BEDROOM HOME



Ground Floor

Kitchen / Lounge / Dining	6355 x 4625 mm	20'10" x 15'2"
Bedroom 1	2661 x 4635 mm	8'9" x 15'2"
Bedroom 2	2210 x 3202 mm	7'3" x 10'6"
Bathroom	2210 x 2161 mm	7'3" x 7'1"

Key

ST Store	wm Washing machine space	f/f Fridge freezer space	W Wardrobe space
CYL Cylinder	dw Dishwasher space		◀▶ Dimension location



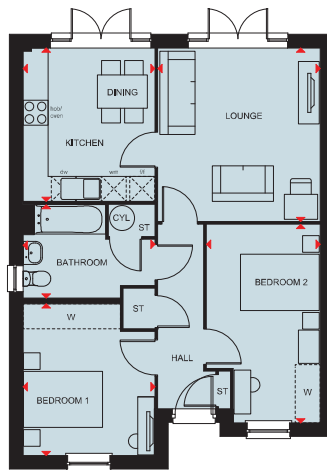
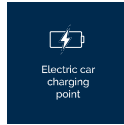
Scan here for more details



DAVID WILSON HOMES

BELTON

TWO BEDROOM HOME



Ground Floor

Lounge	3894 x 4162 mm	12'9" x 13'8"
Kitchen / Dining	3161 x 3685 mm	10'4" x 12'1"
Bedroom 1	3649 x 3160 mm	12'0" x 10'4"
Bedroom 2	4760 x 2729 mm	15'7" x 8'11"
Bathroom	3161 x 2227 mm	10'4" x 7'4"

Key

ST	Store	wm	Washing machine space	f/f	Fridge freezer space	W	Wardrobe space
CYL	Cylinder	dw	Dishwasher space			◀▶	Dimension location



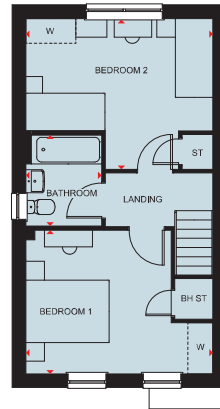
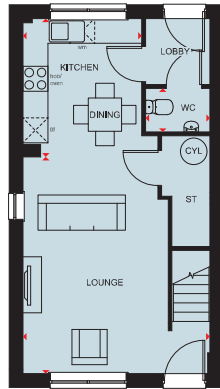
Scan here for more details



DAVID WILSON HOMES

BROOK

TWO BEDROOM HOME



Ground Floor

Lounge	4498 x 5219 mm	14'9" x 17'1"
Kitchen / Dining	2857 x 3326 mm	9'4" x 10'11"
WC	1553 x 1050 mm	5'1" x 3'5"

* Window may not be available on certain plots.
Speak to Sales Adviser for details on individual plans.

First Floor

Bedroom 1	4498 x 3451 mm	14'9" x 11'4"
Bedroom 2	4498 x 3604 mm	14'9" x 11'10"
Bathroom	1825 x 2182 mm	6'0" x 7'2"

Key

ST	Store	wm	Washing machine space	f/f	Fridge freezer space	W	Wardrobe space
CYL	Cylinder					↔	Dimension location



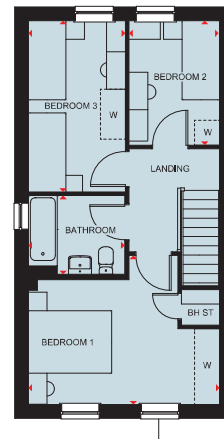
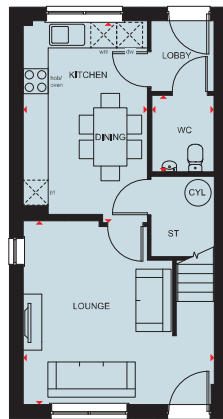
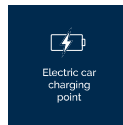
Scan here for more details



DAVID WILSON HOMES

DORE

THREE BEDROOM HOME



Ground Floor

Lounge	4598 x 4418 mm	15'1" x 14'6"
Kitchen / Dining	2988 x 4857 mm	9'10" x 15'11"
WC	1499 x 1841 mm	4'11" x 6'0"

* Window may not be available on certain plots.
Speak to Sales Adviser for details on individual plans.

First Floor

Bedroom 1	4598 x 3585 mm	15'1" x 11'9"
Bedroom 2	2178 x 2995 mm	7'2" x 9'10"
Bedroom 3	2332 x 4118 mm	7'8" x 13'6"
Bathroom	2314 x 1931 mm	7'7" x 6'4"

* Window may not be available on certain plots.
Speak to Sales Adviser for details on individual plans.

Key

ST	Store	wm	Washing machine space	f/f	Fridge freezer space	W	Wardrobe space
CYL	Cylinder	dw	Dishwasher space	BH ST	Bulkhead store	◀▶	Dimension location



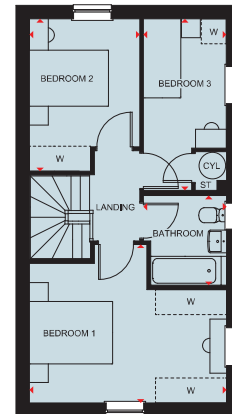
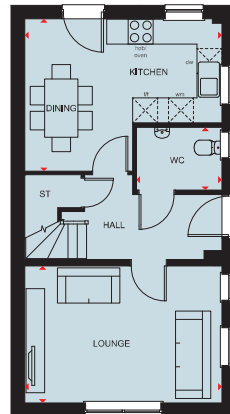
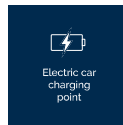
Scan here for more details



DAVID WILSON HOMES

ESCLEY

THREE BEDROOM HOME



Ground Floor

Lounge	4738 x 3295 mm	15'7" x 10'10"
Kitchen / Dining	4738 x 3661 mm	15'7" x 12'0"
WC	2055 x 1508 mm	6'9" x 4'11"

First Floor

Bedroom 1	4738 x 3813 mm	15'7" x 12'6"
Bedroom 2	2651 x 3661 mm	8'8" x 12'0"
Bedroom 3	1994 x 4122 mm	6'7" x 13'6"
Bathroom	1999 x 2156 mm	6'7" x 7'1"

Key

ST	Store	wm	Washing machine space	f/f	Fridge freezer space	W	Wardrobe space
CYL	Cylinder	dw	Dishwasher space			◀▶	Dimension location



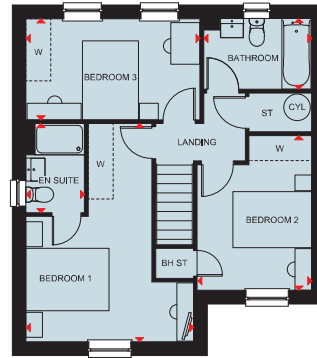
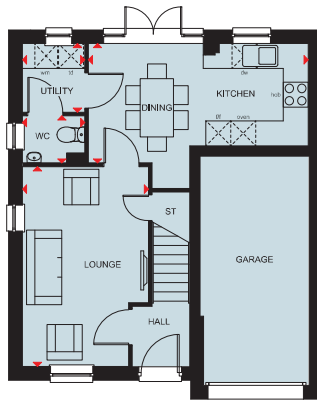
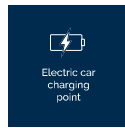
Scan here for more details



DAVID WILSON HOMES

ECKINGTON

THREE BEDROOM HOME



Ground Floor

Lounge	4807 x 3028 mm	15'9" x 10'0"
Kitchen / Dining	5285 x 2673 mm	17'4" x 9'5"
Utility	1651 x 1500 mm	5'5" x 4'11"
WC	1495 x 1134 mm	4'10" x 3'9"

First Floor

Bedroom 1	5247 x 4031 mm	17'3" x 13'3"
En Suite	2148 x 1408 mm	7'1" x 4'7"
Bedroom 2	3719 x 2742 mm	12'3" x 9'0"
Bedroom 3	4185 x 2428 mm	13'9" x 8'0"
Bathroom	2601 x 1701 mm	8'6" x 5'7"

Key

ST	Store	wm	Washing machine space	f/f	Fridge freezer space	W	Wardrobe space	BH ST	Bulkhead store
CYL	Cylinder	dw	Dishwasher space	td	Tumble dryer space	◀▶	Dimension location		



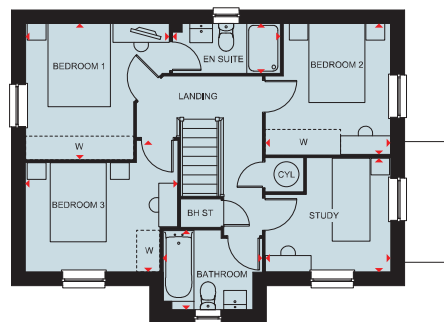
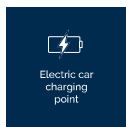
Scan here for more details



DAVID WILSON HOMES

HOLLINWOOD SPECIAL

THREE BEDROOM HOME



Ground Floor

Lounge	3595 x 5973 mm	11'10" x 19'7"
Kitchen / Dining	5973 x 4706 mm	19'7" x 15'5"
Utility	1550 x 2312 mm	5'1" x 7'7"
WC	1014 x 1600 mm	3'4" x 5'3"

First Floor

Bedroom 1	3457 x 3260 mm	11'4" x 10'8"
En Suite	2574 x 1200 mm	8'5" x 4'0"
Bedroom 2	3005 x 3150 mm	9'10" x 10'4"
Bedroom 3	3661 x 3154 mm	12'0" x 10'4"
Study	3005 x 2739 mm	9'10" x 9'0"
Bathroom	2362 x 1900 mm	7'9" x 6'3"

Key

ST Store	wm Washing machine space	f/f Fridge freezer space	W Wardrobe space	BH ST Bulkhead store
CYL Cylinder	dw Dishwasher space	td Tumble dryer space	◀▶ Dimension location	



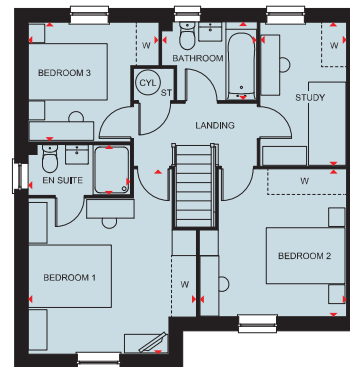
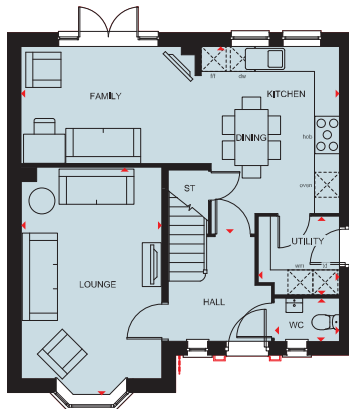
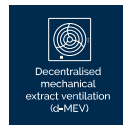
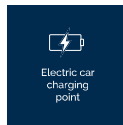
Scan here for more details



DAVID WILSON HOMES

SHENTON SPECIAL

THREE BEDROOM HOME



Ground Floor

Lounge	5473 x 3385 mm	17'11" x 11'1"
Kitchen / Dining / Family	7665 x 4499 mm	25'1" x 16'4"
Utility	1961 x 1878 mm	6'11" x 6'2"
WC	1561 x 1033 mm	5'1" x 3'5"

First Floor

Bedroom 1	4446 x 4040 mm	14'7" x 13'3"
En Suite	2461 x 1200 mm	8'1" x 3'11"
Bedroom 2	3543 x 3549 mm	11'8" x 11'8"
Bedroom 3	3137 x 2864 mm	10'3" x 9'5"
Study	3454 x 2076 mm	11'4" x 6'10"
Bathroom	2275 x 1880 mm	7'6" x 6'2"

* Window may not be available on certain plots. Speak to Sales Adviser for details on individual plans.

Key

ST	Store	wm	Washing machine space	f/f	Fridge freezer space	W	Wardrobe space
CYL	Cylinder	dw	Dishwasher space	td	Tumble dryer space	◀▶	Dimension location



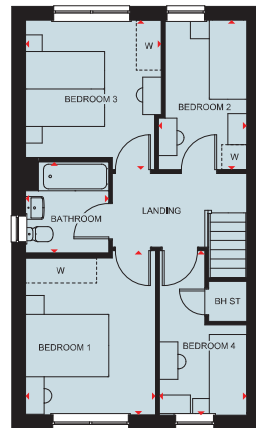
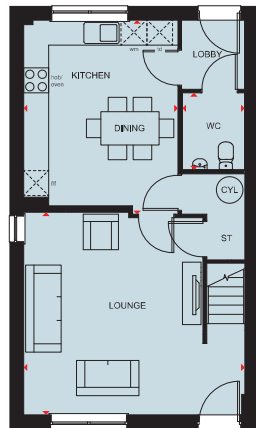
Scan here for more details



DAVID WILSON HOMES

MONNOW

FOUR BEDROOM HOME



Ground Floor

Lounge	5318 x 4870 mm	17'5" x 16'0"
Kitchen / Dining	3709 x 4665 mm	12'2" x 15'4"
WC	1498 x 1841 mm	4'11" x 6'0"

* Window may not be available on certain plots.
Speak to Sales Adviser for details on individual plans.

First Floor

Bedroom 1	3127 x 3947 mm	10'3" x 12'11"
Bedroom 2	2126 x 3598 mm	7'0" x 11'10"
Bedroom 3	3266 x 3598 mm	10'9" x 11'10"
Bedroom 4	2103 x 3952 mm	6'11" x 13'0"
Bathroom	2001 x 2185 mm	6'7" x 7'2"

* Window may not be available on certain plots.
Speak to Sales Adviser for details on individual plans.

Key

ST	Store	wm	Washing machine space	f/f	Fridge freezer space	W	Wardrobe space
CYL	Cylinder	BH ST	Bulkhead store	td	Tumble dryer space	↔	Dimension location



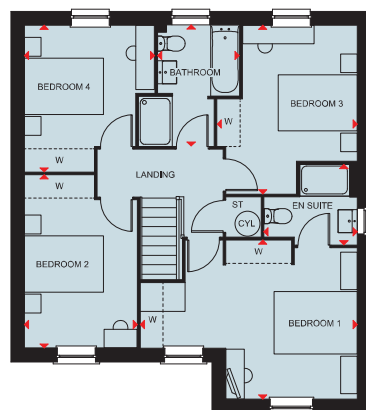
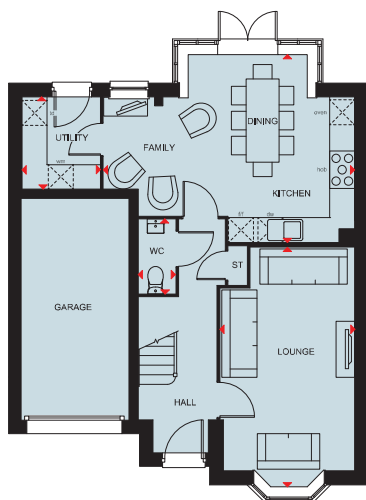
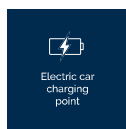
Scan here for more details



DAVID WILSON HOMES

MILLFORD

FOUR BEDROOM HOME



Ground Floor

Lounge	5767 x 3235 mm	18'11" x 10'7"
Kitchen / Family / Dining	6037 x 4543 mm	19'10" x 14'11"
Utility	2211 x 1877 mm	7'3" x 6'2"
WC	1786 x 895 mm	5'10" x 2'11"

First Floor

Bedroom 1	5195 x 3818 mm	17'0" x 12'6"
En Suite	2235 x 1924 mm	7'4" x 6'4"
Bedroom 2	4156 x 2707 mm	13'8" x 8'10"
Bedroom 3	4051 x 3365 mm	13'4" x 11'0"
Bedroom 4	3522 x 3124 mm	11'7" x 10'3"
Bathroom	2913 x 1950 mm	9'7" x 6'5"

* Window may not be available on certain plots. Speak to Sales Adviser for details on individual plans.

Key

ST	Store	wm	Washing machine space	f/f	Fridge freezer space	W	Wardrobe space
CYL	Cylinder	dw	Dishwasher space	td	Tumble dryer space	◀▶	Dimension location



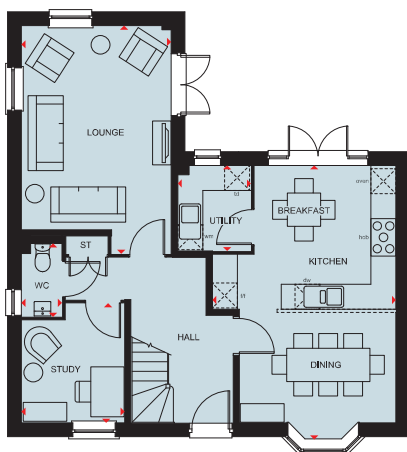
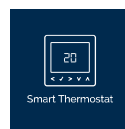
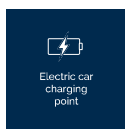
Scan here for more details



DAVID WILSON HOMES

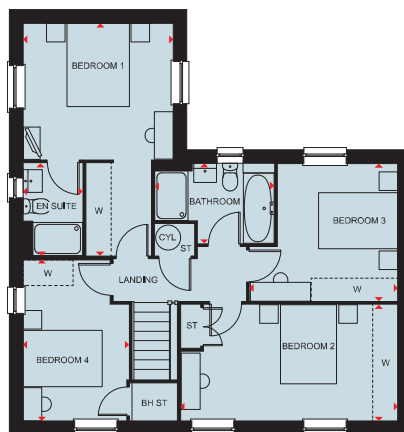
AVONDALE

FOUR BEDROOM HOME



Ground Floor

Lounge	5488 x 3605 mm	18'0" x 11'10"
Kitchen / Breakfast / Dining	6590 x 4415 mm	21'7" x 14'6"
Utility	2060 x 1761 mm	6'9" x 5'9"
Study	2878 x 2488 mm	9'5" x 8'2"
WC	1768 x 975 mm	5'10" x 3'2"



First Floor

Bedroom 1	5585 x 3605 mm	18'3" x 11'10"
En Suite	2222 x 1433 mm	7'3" x 4'8"
Bedroom 2	5225 x 2792 mm	17'1" x 9'2"
Bedroom 3	3563 x 3308 mm	11'8" x 10'10"
Bedroom 4	3853 x 2547 mm	12'7" x 8'4"
Bathroom	2871 x 1927 mm	9'5" x 6'4"

Key

ST	Store	wm	Washing machine space	f/f	Fridge freezer space	W	Wardrobe space	BH ST	Bulkhead store
CYL	Cylinder	dw	Dishwasher space	td	Tumble dryer space	◀▶	Dimension location		



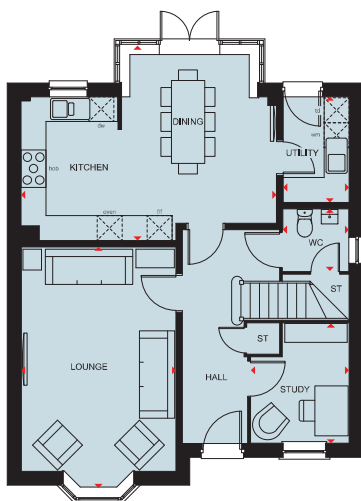
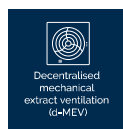
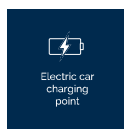
Scan here for more details



DAVID WILSON HOMES

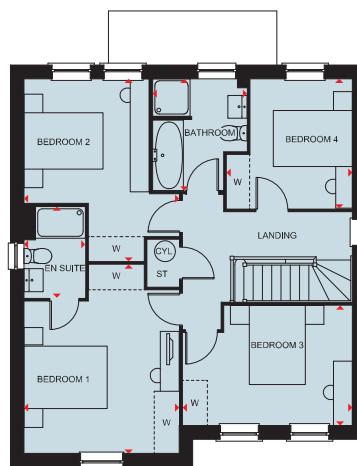
HOLDEN

FOUR BEDROOM HOME



Ground Floor

Lounge	5797 x 3723 mm	19'0" x 12'3"
Kitchen / Dining	6142 x 4685 mm	20'2" x 15'4"
Study	2881 x 2361 mm	9'6" x 7'9"
Utility	2545 x 1588 mm	8'4" x 5'3"
WC	1498 x 1588 mm	4'11" x 5'3"



First Floor

Bedroom 1	4538 x 3728 mm	14'11" x 12'3"
En Suite	2190 x 1471 mm	7'2" x 4'10"
Bedroom 2	4379 x 3728 mm	14'4" x 12'3"
Bedroom 3	4073 x 2881 mm	13'4" x 9'5"
Bedroom 4	3115 x 3019 mm	10'3" x 9'11"
Bathroom	2689 x 2266 mm	8'10" x 7'5"

Key

ST	Store	wm	Washing machine space	f/f	Fridge freezer space	W	Wardrobe space
CYL	Cylinder	dw	Dishwasher space	td	Tumble dryer space	◀▶	Dimension location



Scan here for more details



DAVID WILSON HOMES

WINSTONE

FOUR BEDROOM HOME



 Air Source Heat Pump	 Highly-efficient insulation	 Electric car charging point	 Decentralised mechanical extract ventilation (M-EV)	 Waste Water Heat Recovery Systems	 Argon-filled double-glazing	 Smart Thermostat
---	--	--	--	---	--	---



Ground Floor		
Lounge	5171 x 3665 mm	16'11" x 12'0"
Kitchen / Family / Breakfast	6535 x 5758 mm	21'5" x 18'11"
Dining	3563 x 2846 mm	11'8" x 9'4"
Utility	2250 x 1591 mm	7'4" x 5'3"
Study	3670 x 2175 mm	12'0" x 7'2"
WC	1470 x 1210 mm	4'10" x 4'0"

First Floor		
Bedroom 1	5164 x 3624 mm	16'11" x 11'10"
Dressing	3155 x 2265 mm	10'4" x 7'5"
En Suite 1	2615 x 2182 mm	8'7" x 7'2"
Bedroom 2	3722 x 3218 mm	12'2" x 10'7"
En Suite 2	2710 x 1178 mm	8'11" x 3'10"
Bedroom 3	3363 x 2940 mm	11'1" x 9'8"
Bedroom 4	3623 x 3283 mm	11'10" x 10'9"
Bathroom	3014 x 2182 mm	9'10" x 7'2"

Key

ST	Store	wm	Washing machine space	f/f	Fridge freezer space	W	Wardrobe space
CYL	Cylinder	dw	Dishwasher space	td	Tumble dryer space	◀▶	Dimension location

* Window may not be available on certain plots. Speak to Sales Adviser for details on individual plans.



Scan here for more details



DAVID WILSON HOMES

— CREATING A SUSTAINABLE —

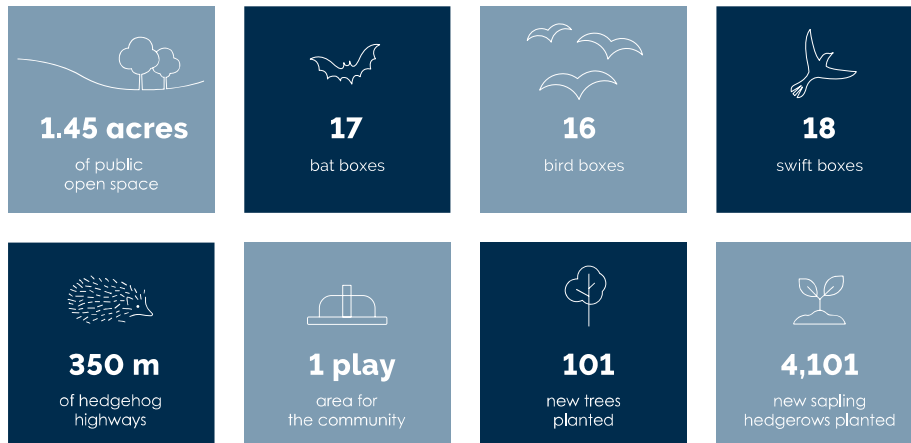
COMMUNITY

WHERE FAMILIES AND NATURE CAN THRIVE

At David Wilson Homes, we do more than simply craft beautiful homes and desirable developments.

We design and build great places that meet the highest standards, and that promote sustainable, healthy and happy living for our customers.

We know we must give our customers confidence that their homes are designed and built to meet the challenges of the future. We do this through creating places where people and nature can thrive.



DAVID WILSON HOMES

WHERE QUALITY LIVES

dwh.co.uk