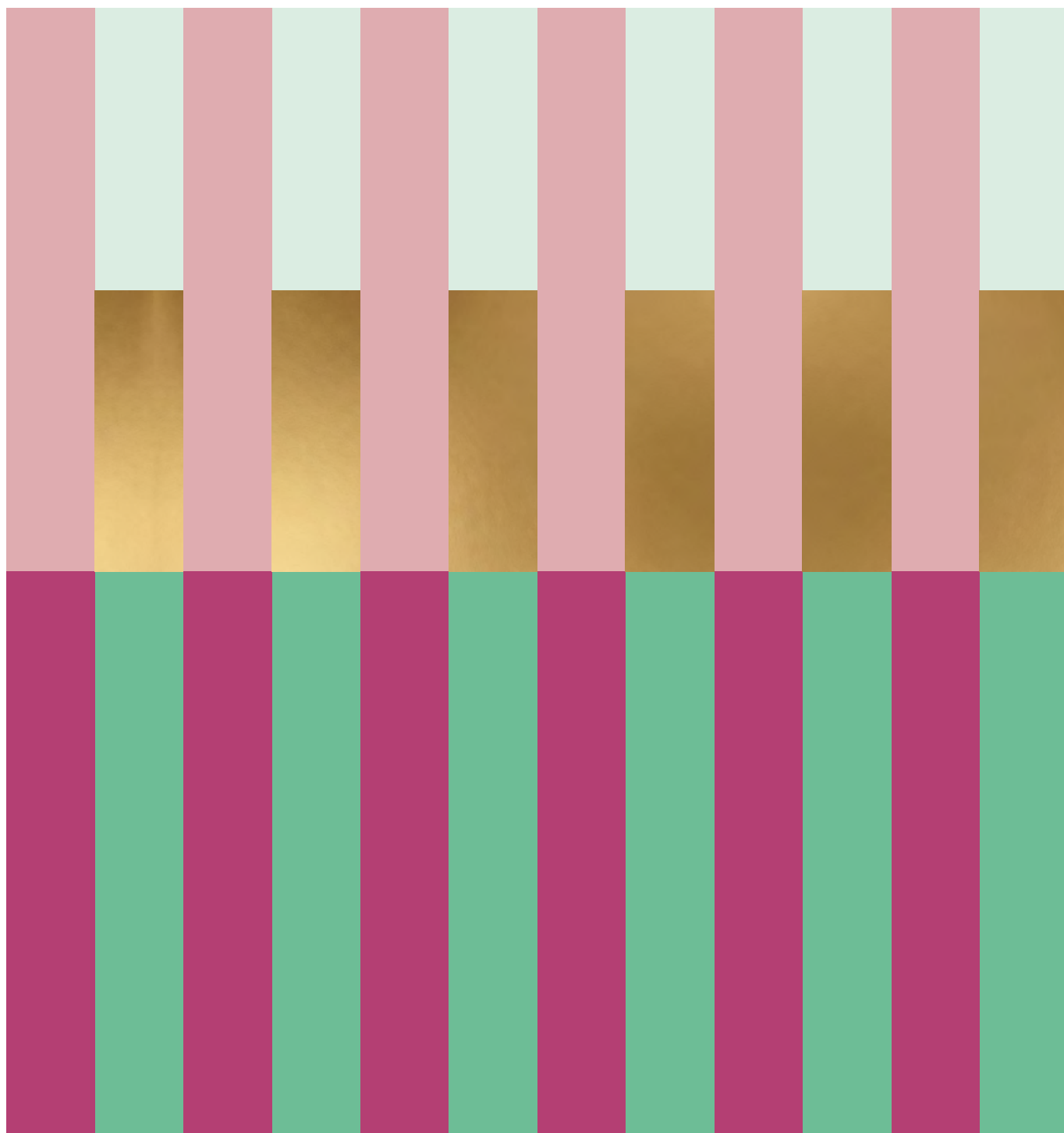
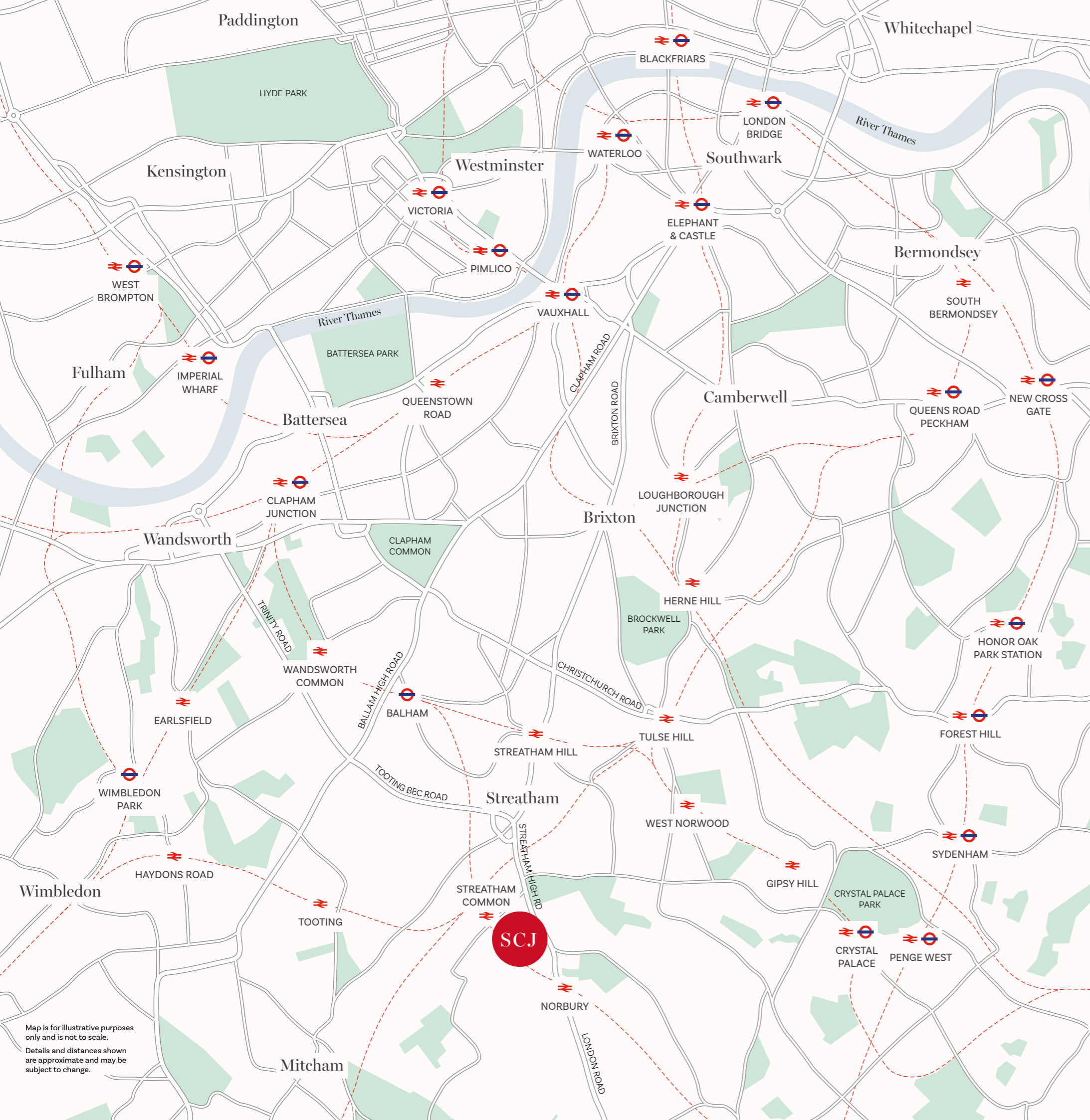


# Streatham Common Junction

*Next stop, home.*





# The Common's Calling

Welcome to Streatham Common Junction - a collection of one, two and three-bedroom apartments plugged into the pulse of SW16. Homes designed for wellbeing, flow and everyday ease. Light-filled layouts that chase the sun. Balconies and terraces that pull the outside in, allowing you to take in your neighbourhood from a different angle.

Over the road, Streatham Common station whisks you to Balham in minutes. London Victoria in 20. Only a 10-minute stroll away, the green space of the Common beckons when the city gets loud.

This is Zone 3 living with Zone 1 energy. Step out, coffee in hand. London's waiting.

Map is for illustrative purposes only and is not to scale. Details and distances shown are approximate and may be subject to change.



# A new corner of Streatham

This is a new address for SW16. Contemporary architecture shaped by brick, rhythm and light. Sculpted rooflines echo the surrounding streets, while repeated bays and generous windows bring calm order to the skyline. It feels rooted in Streatham's character but built for what's next. Ground-floor homes meet the street with landscaped edges. Upper levels step back to create terraces and views. It's confident but not loud. A development that respects where it stands - and quietly raises the bar for what living here can be.

02

03



## *Designed around real life*

Streatham Common Junction isn't just a collection of homes – it's a neighbourhood in miniature. Landscaped courtyards, shared green spaces with an outdoor gym, and safe, walkable routes bring people together naturally. Calm public spaces replace unnecessary traffic. Trees line the streets. Benches invite pause. Every detail has been shaped to make daily life easier, healthier and more connected. Whether you're heading out, working from home or winding down, the layout flows with you. This is city living, rebalanced. Space to breathe. Space to move. Space to belong.



# Community, built in

Your neighbourhood sets the pace. Morning walks through wildflower meadows on Streatham Common's upper slopes. Afternoon errands along one of London's longest high streets.

Evenings that start with a pint and end with a leisurely amble home.

Streatham Common Junction is proudly local and effortlessly connected. Streets hum with bakeries, bars and baristas. Independent cafés sit beside big-name essentials. Nearby leafy streets lead to buzzing high-road energy. It's a place where life feels full without feeling rushed.

Walk outside your front door and into communal green spaces for sunset catch-ups and morning stretches. A proposed cycle hub and thoughtfully placed resting spots make it easy to take a breath, park up and say hello.

## Lets go for a walk

From Common to capital in one smooth move. Bond Street boutiques and South Bank galleries. Brixton beats. Central London is always close at hand, and SW16's best bits are even closer. Right here. Right now. South London living, sorted.

### FOOD & DRINK

- 1 Green Cactus Coffee
- 2 SW16 Bar & Kitchen
- 3 Signor Ciccio
- 4 The Bull
- 5 David's Deli
- 6 Art & Craft SW16
- 7 La Casita
- 8 Milk
- 9 Brickwood Coffee & Bread
- 10 The Exhibit
- 11 Graveney and Meadow
- 12 Daddy Bao
- 13 Spice Village
- 14 Chez Bruce
- 15 Cut the Mustard
- 16 Streatham Kitchen
- 17 The Rookery Café
- 18 Gypsy Hill Brewing Company Taproom
- 19 Hazel's Café
- 20 BAD BREW INC.
- 21 LOCKES Bar
- 22 Knife Restaurant
- 23 Milk Run Bakery
- 24 Heritage Dulwich
- 25 Florentine Bakery
- 26 La Cucina di Ina
- 27 Estate Office Coffee
- 28 Bird House Brewery

### SHOPPING

- 1 Streatham High Road
- 2 Sainsbury's Local
- 3 Aldi
- 4 Marks & Spencer Foodhall
- 5 Streatham Ice and Leisure Retail Cluster
- 6 Bellevue Road
- 7 Northcote Road
- 8 Tooting Market
- 9 Balham High Road
- 10 Sainsbury's Local
- 11 Brixton Market
- 12 Tesco Superstore
- 13 Sainsbury's Supermarket
- 14 Lidl

### PARKS & LEISURE

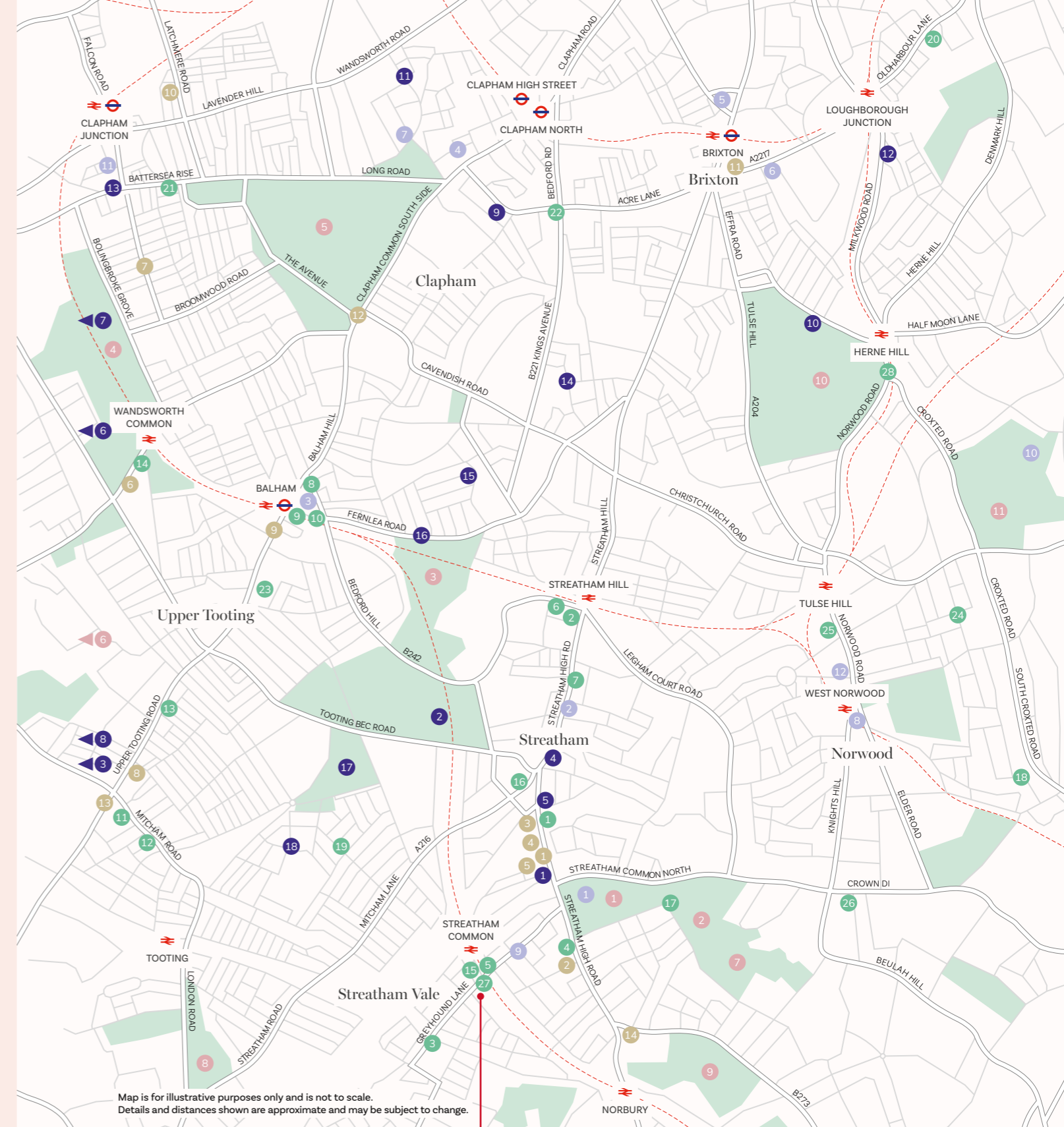
- 1 Streatham Common
- 2 The Rookery Gardens
- 3 Tooting Bec Common
- 4 Wandsworth Common
- 5 Clapham Common
- 6 Garratt Park
- 7 Norwood Grove
- 8 Figge's Marsh
- 9 Norbury Park
- 10 Brockwell Park
- 11 Belair Park

### SPORT & FITNESS

- 1 Streatham Ice and Leisure Centre
- 2 Tooting Bec Lido
- 3 Tooting Leisure
- 4 Energie Fitness
- 5 The Gym Group
- 6 Magdalen Park Lawn Tennis Club
- 7 The Font Climbing Centre
- 8 AFC Wimbledon
- 9 Flow State Fit Club
- 10 Brockwell Park Lido
- 11 Virgin Active Gym
- 12 The Gym Group
- 13 Psyche Clapham
- 14 Anytime Fitness
- 15 Grafton Tennis and Squash Club
- 16 Balham Boxing Club
- 17 Tooting Bec Athletic Track and Gym
- 18 Playtime Padel Tooting

### ARTS & CULTURE

- 1 Streatham Festival
- 2 Streatham Odeon Cinema
- 3 The Exhibit - Balham
- 4 Clapham Picturehouse
- 5 Brixton Academy
- 6 Brixton House Theatre
- 7 Omnibus Theatre - Clapham
- 8 South London Theatre
- 9 Railway Pub Comedy Club
- 10 Dulwich Picture Gallery
- 11 Clapham Grand
- 12 West Norwood Picture House



Streatham  
Common  
Junction

Next stop, home.



**GREEN CACTUS COFFEE**  
Go-to for fresh brews, artisan focaccia, and great vibes  
0.9 miles | 21 min walk

**THE ROOKERY CAFÉ**  
Friendly local café serving brunch, coffee and cakes.  
1 mile | 24 min walk

**SIGNOR CICCIO**  
Authentic Italian restaurant serving all the classics  
0.4 mile | 9 min walk

*Pull up a chair*

It's all on your doorstep. Start at Green Cactus Coffee for a flawless flat white. Wander to The Rookery Café after a stroll through the Common. Grab a table at SW16 Bar & Kitchen for modern European plates or share Portuguese tapas at La Casita. Pubs? The Bull. The Earl Ferrers. Always lively and always local. Looking for la dolce vita? Signor Ciccio's the answer to your Italian cravings.



### *Ground yourself*

Woodland trails. Open meadows. Designated nature reserves. Streatham Common is your daily reset with over 60 acres of nature to explore. Whether that's a jog at sunrise, a picnic at noon or a long walk as the light fades.

Landscaped gardens and dedicated play spaces extend that outdoor feeling right to your home. Leafy pockets, planting and lush expanses long to be discovered. Neighbours pause, chat and connect. Breathe in. Slow down.



## Great finds

Bread. Birthday cards. Big shops. Little finds. Streatham High Road rolls on like a lazy summer day. Supermarkets for the essentials and Friday night treats. Independents for the unexpected. Artisan coffee and delis for tonight's dinner or tomorrow's lunch.

Dash into fashion, fitness and food hotspots. All steps from your front door, it's so very convenient and unmistakably London.

14



### THE VILLAGE CARD SHOP

Satisfy all your  
greetings card needs  
0.1 mile | 2 min walk

### SAINSBURY'S LOCAL

Pantry provisions  
and fridge fillers, just  
around the corner  
0.2 mile | 5 min walk

### DAVID'S DELI

A highly rated  
independent and  
local deli  
0.3 mile | 6 min walk

15



## *South London, on stage*

Culture here is part of everyday life in Streatham. Catch the latest release at Odeon, or head to local bars and pubs for comedy acts, live music and DJ nights that keep the neighbourhood buzzing. Community events bring Streatham Common to life, while nearby Balham, Brixton and Clapham broaden the scene with independent cinemas, theatre and headline gigs - London's energy, always within easy reach.

16

### **STREATHAM FESTIVAL**

An unforgettable celebration of culture and community  
0.6 mile | 14 min walk

### **ODEON STREATHAM**

Eight-screen, state-of-the-art cinema showing the latest releases  
0.4 mile | 9 min walk

### **BRIXTON ACADEMY**

Major live music venue hosting big-name acts - genuinely iconic.  
1 mile | 24 min walk



17



# The city, on your terms

London is closer than you think. Morning meetings in Victoria. Dinner in Soho. Galleries on the South Bank. A last-minute plan in Clapham. From Streatham Common Junction, it all feels effortless. Fast connections mean less planning, more living. Yet home remains calm, green and grounded. You get the energy without the overload. Culture without the commute. Big city ambition paired with neighbourhood ease. Step out when you want the buzz. Step back when you need balance. Here, London doesn't overwhelm - it works around you.





Lifestyle image is indicative only

## Seriously connected

Step out the door and straight onto the platform. Streatham Common station connects you quickly to London's biggest hubs, putting work, nights out and weekend plans within easy reach. Fast services run into Victoria, Battersea Park and London Bridge, with Clapham Junction just minutes away for connections across the Capital and beyond.



➤ National Rail | ⚙️ Northern | ⚙️ Victoria  
 ⚙️ Circle | ⚙️ District | ⚙️ Jubilee

Travel times are approximate. Source: National Rail / Google Maps

**CLAPHAM COMMON**

Spacious open common and sports fields  
0.5 mile | 12 min walk



**BATTERSEA ARTS CENTRE**

Historic arts venue showcasing creative events  
1.3 miles | 30 min walk



**BATTERSEA PARK**

200-acre Victorian oasis by the riverside  
0.1 mile | 3 min walk



**ST. JAMES'S PARK**

Royal park with lakes, flowers and wildlife  
0.5 mile | 12 min walk



**TOWER BRIDGE**

Historic Thames crossing connecting the City  
0.6 mile | 15 min walk



**TATE MODERN**

World-famous museum for contemporary art  
0.7 mile | 16 min walk



*Clapham Junction*

SCJ

12 minutes / 3 stops

*Battersea Park*

16 minutes / 4 stops

*Victoria*

20 minutes / 5 stops

*London Bridge*

30 minutes / 8 stops



**CLAPHAM GRAND**

Venue hosting live music and comedy shows  
0.1 mile | 1 min walk



**BATTERSEA POWER STATION**

Restored landmark with shops, dining, and leisure  
0.6 mile | 16 min walk



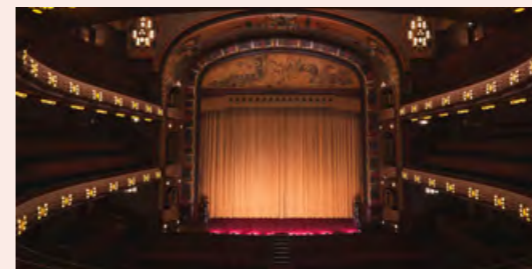
**BUCKINGHAM PALACE**

Official London home of the British monarch  
0.5 mile | 12 min walk



**CLAPHAM PICTUREHOUSE**

Independent neighbourhood cinema  
1.6 miles | 36 min walk



**APOLLO VICTORIA THEATRE**

Iconic West End theatre, home of *Wicked*  
0.1 mile | 2 min walk



**BOROUGH MARKET**

Food market with artisan produce and street food  
0.2 mile | 4 min walk



## *Small steps, big futures*

A strong mix of local state and independent schools makes Streatham a smart move for growing families. Streatham & Clapham High. Sunnyhill Primary. Bishop Thomas Grant. Woodmansterne. Choices that carry from early years to sixth form.

And when it's time for university, London's world-class campuses are easily accessible via train. Start here. Go anywhere.

### **PRIMARY**

- Immanuel & St Andrew C of E School 0.5 mile | 10 min walk
- Granton Primary School 0.5 mile | 11 min walk
- Woodmansterne Primary School 0.6 mile | 13 min walk
- Pentwortham Primary School 0.8 mile | 19 min walk
- St Andrew's Catholic Primary School 1 mile | 23 min walk

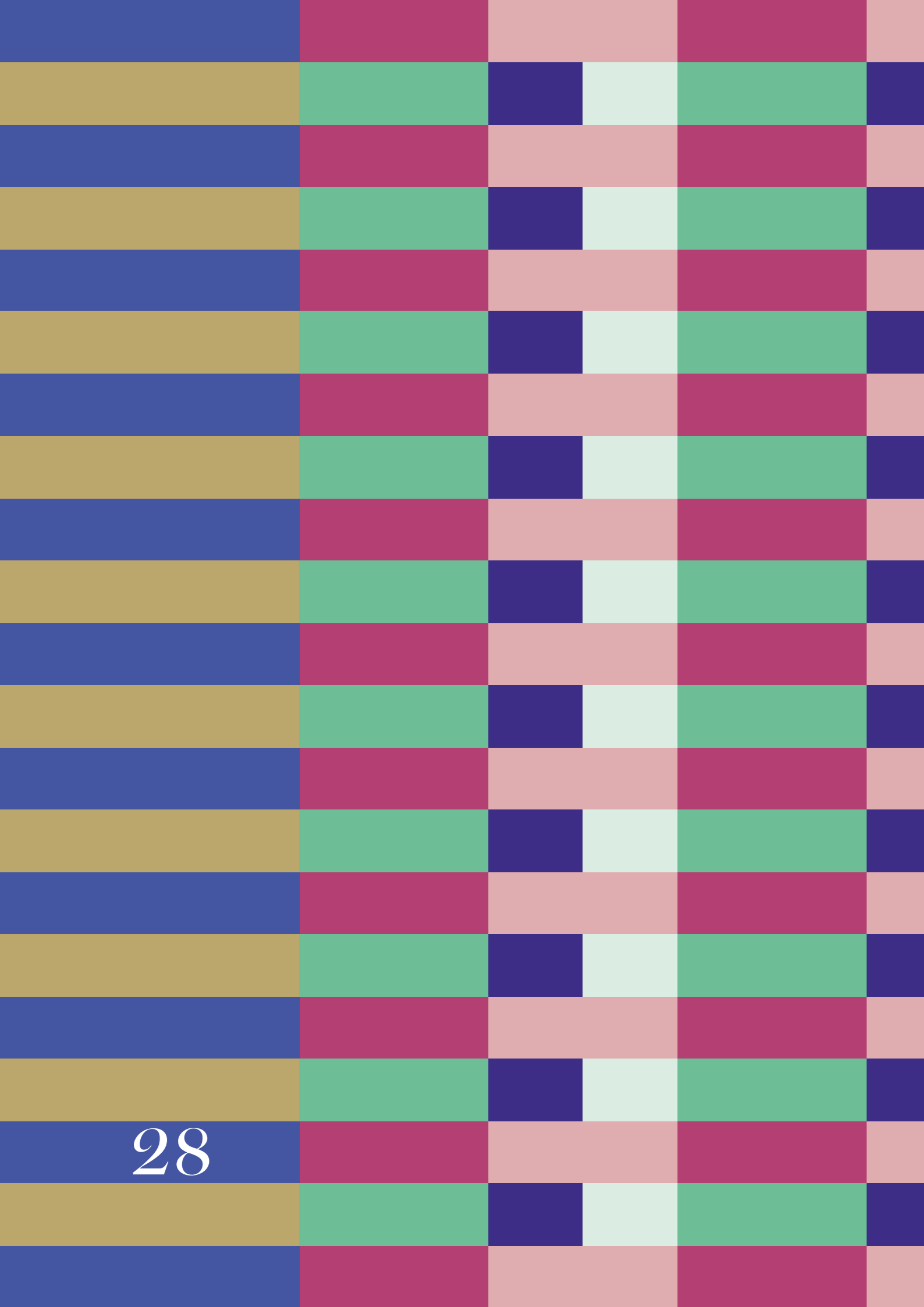
### **SECONDARY**

- Woodmansterne School 0.6 mile | 13 min walk | 2 min cycle
- Graveney School 1.2 miles | 27 min walk | 8 min cycle
- Bishop Thomas Grant School 1.3 miles | 31 min walk | 11 min cycle
- Streatham & Clapham High School 1.4 miles | 32 min walk | 10 min cycle
- Dunraven School 1.6 miles | 38 min walk | 12 min cycle

### **UNIVERSITY**

- King's College London (Waterloo) 47 min train
- Imperial College London 47 min train
- London School of Economics 54 min train
- University College London 50 min train

Lifestyle images are indicative only  
Travel times are approximate. Source: Maps.google.com



# Where life unfolds

Behind the brickwork and balconies lies something simpler – homes designed for how people actually live. Spaces that flex from workday mornings to weekend gatherings. Kitchens made for cooking properly. Living rooms that stretch into the outdoors. Bedrooms that offer true quiet. This isn't just square footage. It's thoughtful planning.

Dual-aspect layouts invite daylight deep into the room. Smart storage keeps life organised. Materials are chosen for longevity as much as for looks. It's comfort that lasts beyond first impressions. Because good design isn't about show. It's about how it feels, every single day.

A concierge helps smooth the rhythm of daily life, from early mornings to late returns. Landscaped gardens offer space to step outside without leaving home, places to walk, pause, or meet neighbours. There's room to move too, with an outdoor gym bringing fresh air into everyday routines. These shared spaces aren't extras. They're part of how the development works - thoughtfully designed to support wellbeing, community, and the moments that shape each day.



## *Bright, breezy living*

One to three-beds, all cleverly crafted for feel-good living. A high proportion of dual-aspect homes flood rooms with daylight while naturally keeping things cool. Add deep, practical balconies, terraces and corner views. Here are homes that breathe, shine and seriously deliver on everyday comfort.

32



Lifestyle image is indicative only

33



### *Put your feet up*

Light floods in. Open-plan living areas built for mornings that start gently and evenings that stretch long. Generous balconies blur the line between inside and out, giving you great views and space you'll actually use.



36

*Made for living*

Sharp lines. Smart finishes. Serious cooking. Handleless cabinetry. Sleek appliances. Surfaces made for chopping, pouring and plating. From midweek meals to weekend feasts, this is where it all comes together.

37

## *Your quiet place*

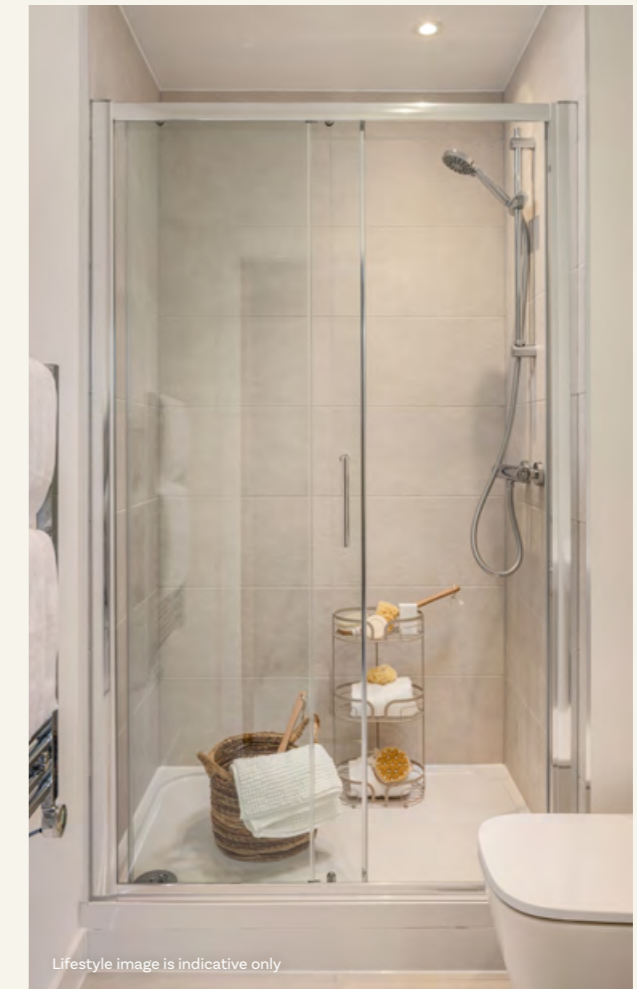
Switch off. Sink in. Soft carpets underfoot. Calm tones all around. A place to reset after late nights and early mornings. Lights out. City off.





40

CGI is indicative only

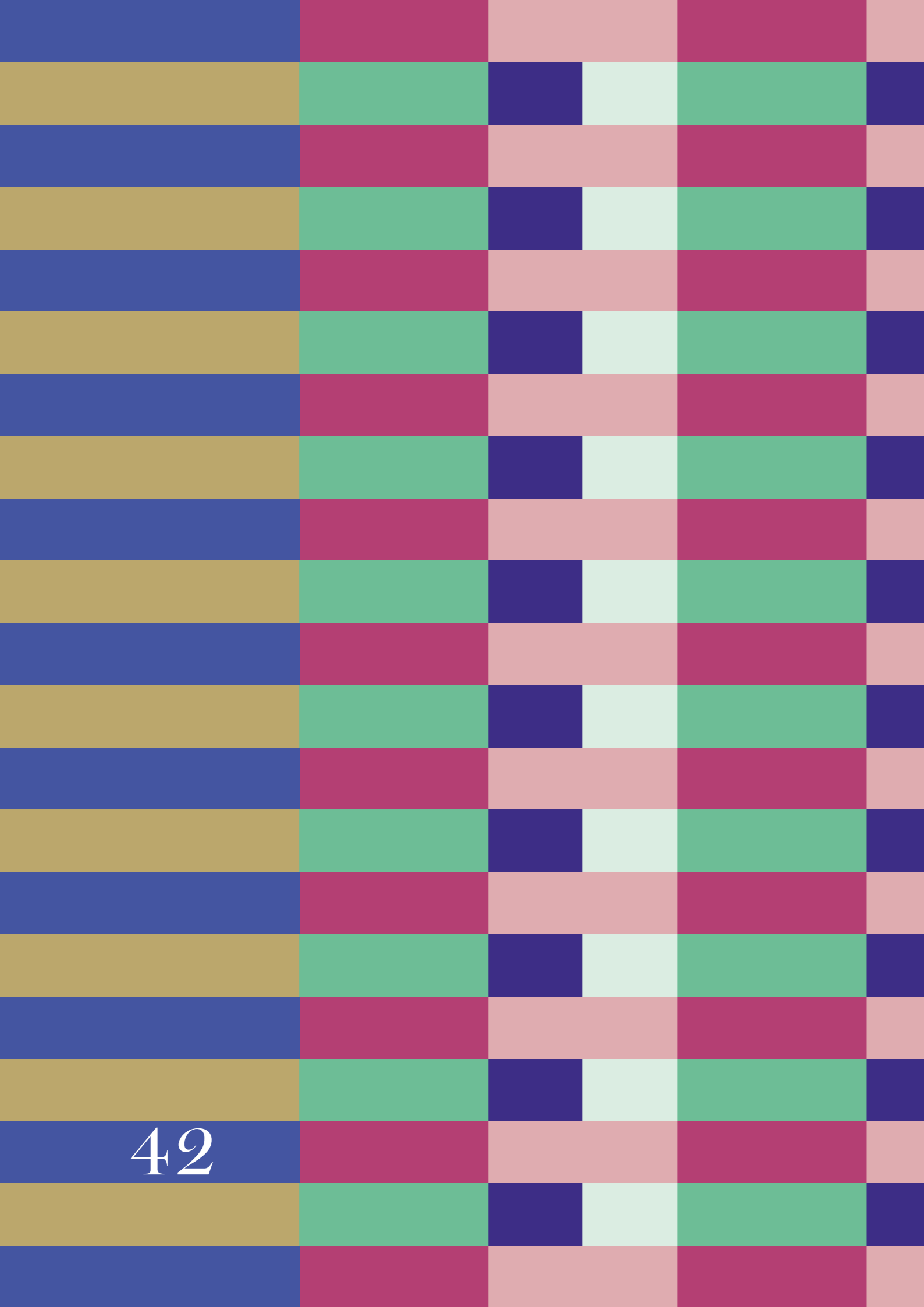


Lifestyle image is indicative only

## *Refreshingly contemporary*

Rise and shine. Or soak and slow. Clean lines. Chrome finishes. A space that works as hard in the morning as you do - and unwinds just as well at night. Ready when you are.

41



# Find your fit at Harrison Court

The following floorplans illustrate the range of one, two and three-bedroom homes available at Streatham Common Junction. Generous proportions, practical storage and considered layouts create homes that feel balanced and easy to live in.

Study the detail. Explore the options.  
Next stop home.



**Key**

- Affordable Apartments
- Private & Affordable Apartments
- Private Apartments
- Concierge
- Proposed Doctors Surgery
- Proposed Cycle Hub

**Your new neighbourhood**

Images and development layouts are for illustrative purposes, should be used for general guidance only and are not intended to form part of any contract or warranty unless specifically incorporated in writing. Development layouts including house types and tenures, the location of affordable housing, parking arrangements, play areas, landscaping and public open spaces are subject to change including any changes required due to a change in planning permission. Streatham Common Junction and individual block names are for marketing purposes only and may not be the designated postal address, which may be determined by The Post Office.

## Apartment Locator

Plot	Level	Beds	Area sqm	Area sqft	Page
015	01	1 Bed	45.25	487.05	48
030	02	1 Bed	45.25	487.05	49
045	03	1 Bed	45.25	487.05	49
060	04	1 Bed	45.25	487.05	49
009	01	1 Bed	53.20	572.62	50
011	01	1 Bed	53.20	572.62	51
024	02	1 Bed	53.53	576.21	52
039	03	1 Bed	53.53	576.21	52
054	04	1 Bed	53.53	576.21	52
026	02	1 Bed	53.53	576.21	53
041	03	1 Bed	53.53	576.21	53
056	04	1 Bed	53.53	576.21	53
019	01	1 Bed	53.85	579.67	54
034	02	1 Bed	53.95	580.66	55
049	03	1 Bed	53.95	580.66	55
064	04	1 Bed	53.95	580.66	55
020	01	1 Bed	54.28	584.23	56
035	02	1 Bed	54.07	582.05	57
050	03	1 Bed	54.07	582.05	57
065	04	1 Bed	54.07	582.05	57
016	01	1 Bed	54.12	582.60	58
031	02	1 Bed	54.29	584.39	59
046	03	1 Bed	54.29	584.39	59
061	04	1 Bed	54.29	584.39	59
017	01	2 Bed	68.15	733.55	60
018	01	2 Bed	68.15	733.55	61
033	02	2 Bed	68.50	737.38	62
048	03	2 Bed	68.50	737.38	62
063	04	2 Bed	68.50	737.38	62
032	02	2 Bed	68.50	737.38	63
047	03	2 Bed	68.50	737.38	63
062	04	2 Bed	68.50	737.38	63
021	01	2 Bed	68.65	738.95	64

Plot	Level	Beds	Area sqm	Area sqft	Page
014	01	2 Bed	69.02	742.88	65
036	02	2 Bed	69.15	744.32	66
051	03	2 Bed	69.15	744.32	66
066	04	2 Bed	69.15	744.32	66
029	02	2 Bed	69.68	750.05	67
044	03	2 Bed	69.68	750.05	67
059	04	2 Bed	69.68	750.05	67
003	00	2 Bed	71.07	765.02	68
008	01	2 Bed	72.32	778.49	69
012	01	2 Bed	72.32	778.49	70
023	02	2 Bed	72.49	780.29	71
038	03	2 Bed	72.49	780.29	71
027	02	2 Bed	72.49	780.29	72
042	03	2 Bed	72.49	780.29	72
057	04	2 Bed	72.85	784.18	73
053	04	2 Bed	72.85	784.18	74
002	00	2 Bed	73.88	795.26	75
001	00	2 Bed	81.03	872.18	76
010	01	3 Bed	86.88	935.13	77
005	00	3 Bed	87.18	938.36	78
025	02	3 Bed	87.38	940.50	79
040	03	3 Bed	87.38	940.50	79
055	04	3 Bed	87.38	940.50	79
013	01	3 Bed	89.20	960.10	80
004	00	3 Bed	89.63	964.72	81
007	01	3 Bed	89.96	968.28	82
022	02	3 Bed	89.96	968.28	83
037	03	3 Bed	89.96	968.28	83
052	04	3 Bed	89.96	968.28	83
028	02	3 Bed	89.96	968.28	84
043	03	3 Bed	89.96	968.28	84
058	04	3 Bed	89.96	968.28	84
006	00	3 Bed	90.10	969.83	85

## Apartment Locator

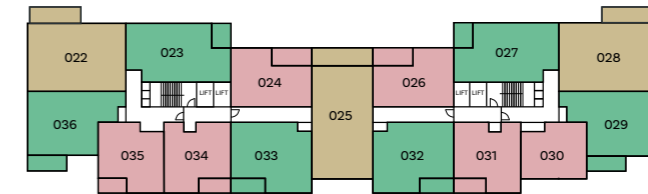
Fourth Floor



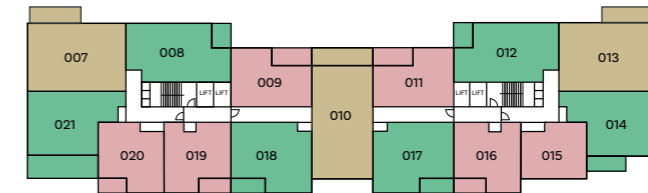
Third Floor



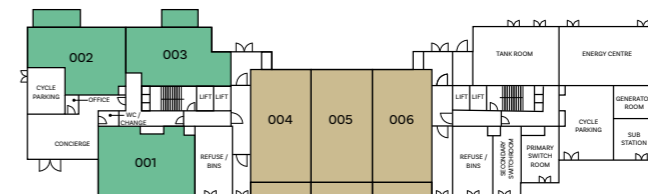
Second Floor



First Floor



Ground Floor

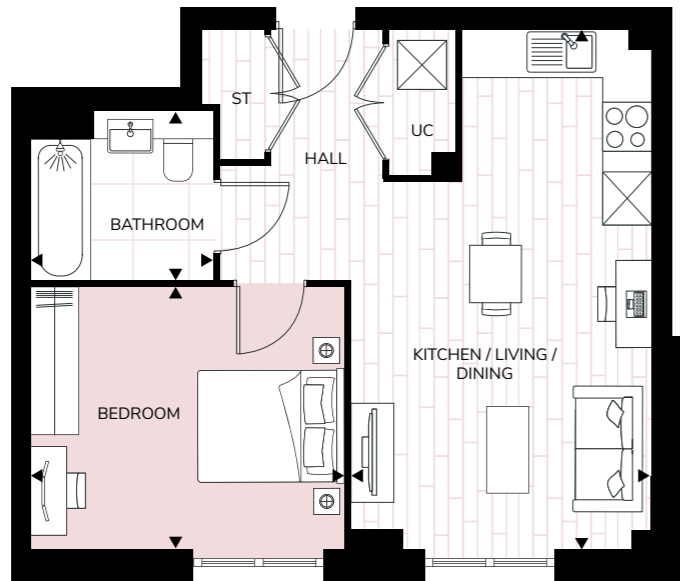


■ One Bedroom
 ■ Two Bedroom
 ■ Three Bedroom

# D-14a

1 Bedroom Apartment  
Apartment 015 (Level 01)

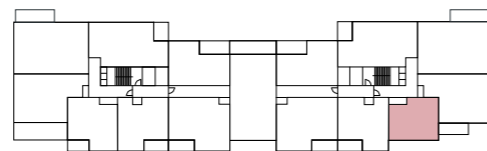
Total Internal Area  
45.25 sq m 487.05 sq ft



### Apartment Dimensions

Kitchen / Living / Dining	6.33m x 3.64m	20'9" x 12'0"
Bedroom	3.78m x 3.18m	12'5" x 10'5"
Bathroom	2.20m x 2.05m	7'3" x 6'9"

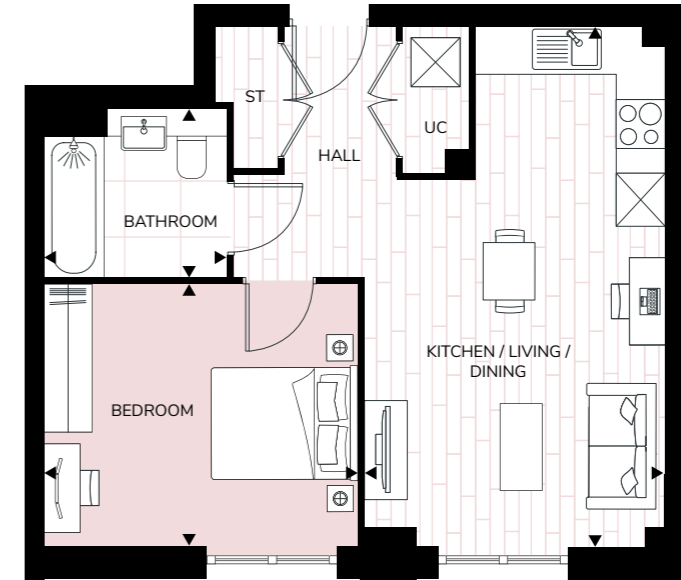
### Apartment Location



# D-14

1 Bedroom Apartment  
Apartments 030 (Level 02), 045 (Level 03) & 060 (Level 04)

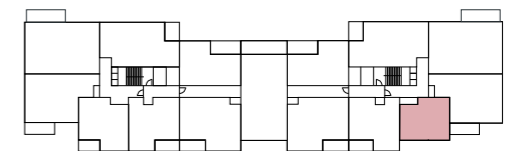
Total Internal Area  
45.25 sq m 487.05 sq ft



### Apartment Dimensions

Kitchen / Living / Dining	6.33m x 3.64m	20'9" x 12'0"
Bedroom	3.78m x 3.18m	12'5" x 10'5"
Bathroom	2.20m x 2.05m	7'3" x 6'9"

### Apartment Location



# D-09a

1 Bedroom Apartment  
Apartment 009 (Level 01)

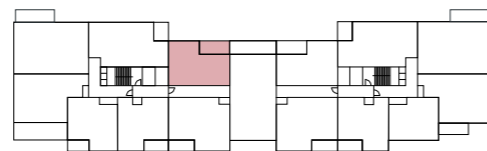
**Total Internal Area**  
53.20 sq m 572.62 sq ft



### Apartment Dimensions

Kitchen / Living / Dining	6.54m x 4.53m	21'6" x 14'11"
Bedroom	4.56m x 2.79m	15'0" x 9'2"
Bathroom	2.20m x 2.05m	7'3" x 6'9"
Terrace	4.67m x 1.92m	15'4" x 6'4"

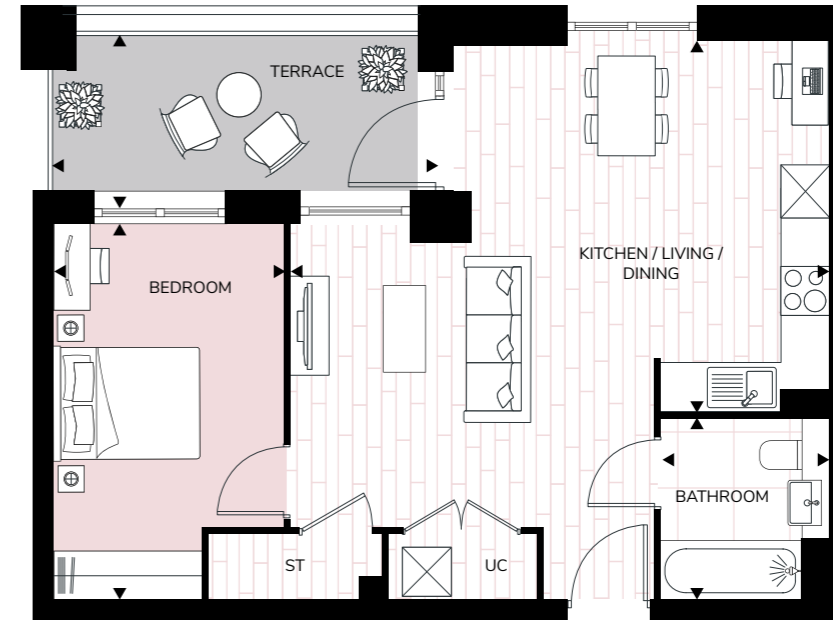
### Apartment Location



# D-09ah

1 Bedroom Apartment  
Apartment 011 (Level 01)

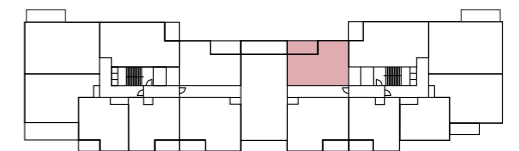
**Total Internal Area**  
53.20 sq m 572.62 sq ft



### Apartment Dimensions

Kitchen / Living / Dining	6.54m x 4.53m	21'6" x 14'11"
Bedroom	4.56m x 2.79m	15'0" x 9'2"
Bathroom	2.20m x 2.05m	7'3" x 6'9"
Terrace	4.67m x 1.92m	15'4" x 6'4"

### Apartment Location

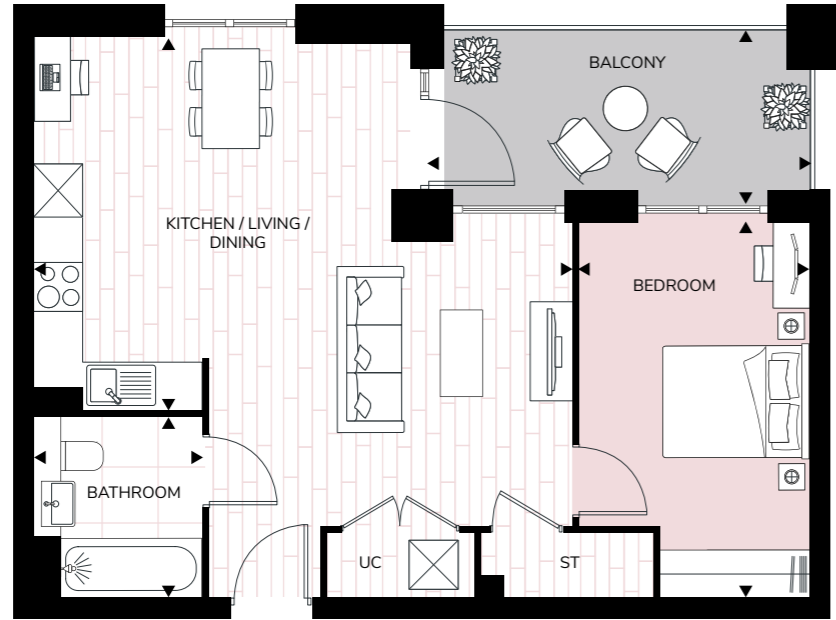


# D-09

**Total Internal Area**  
53.53 sq m 576.21 sq ft



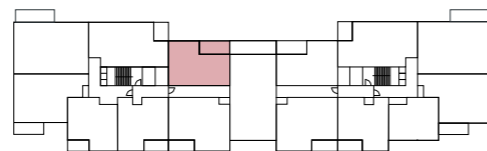
1 Bedroom Apartment  
Apartments 024 (Level 02), 039 (Level 03) & 054 (Level 04)



### Apartment Dimensions

Kitchen / Living / Dining	6.54m x 4.53m	21'6" x 14'11"
Bedroom	4.56m x 2.79m	15'0" x 9'2"
Bathroom	2.20m x 2.05m	7'3" x 6'9"
Balcony	4.67m x 1.50m	15'4" x 4'11"

### Apartment Location

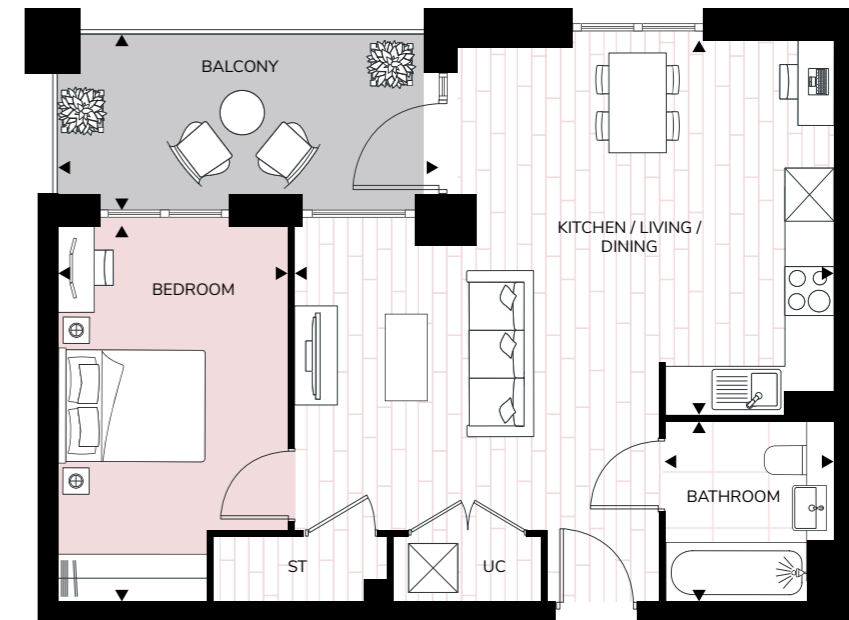


# D-09h

**Total Internal Area**  
53.53 sq m 576.21 sq ft



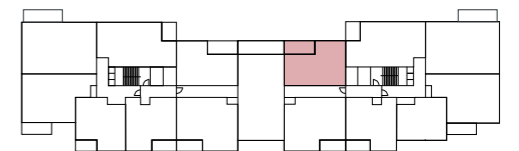
1 Bedroom Apartment  
Apartments 026 (Level 02), 041 (Level 03) & 056 (Level 04)



### Apartment Dimensions

Kitchen / Living / Dining	6.54m x 4.53m	21'6" x 14'11"
Bedroom	4.56m x 2.79m	15'0" x 9'2"
Bathroom	2.20m x 2.05m	7'3" x 6'9"
Balcony	4.67m x 1.50m	15'4" x 4'11"

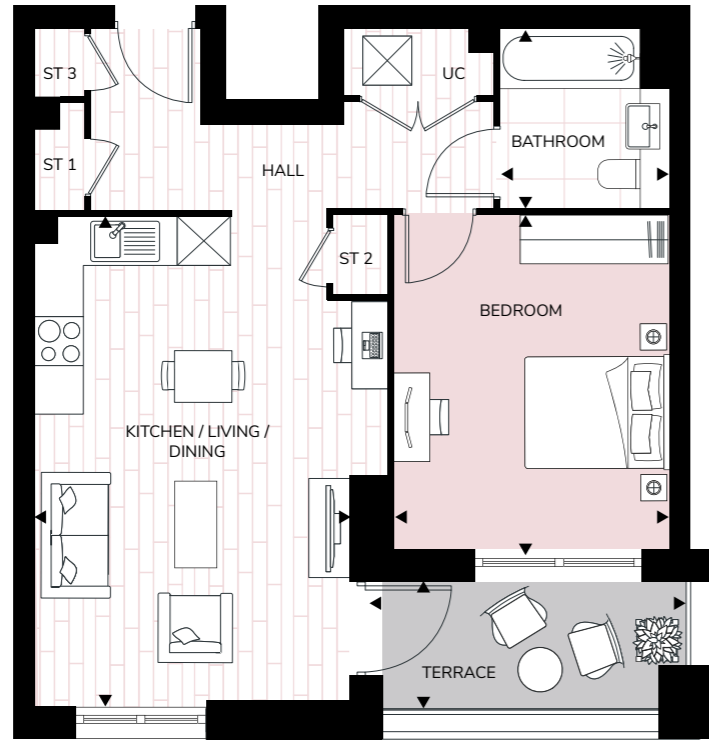
### Apartment Location



# D-15a

1 Bedroom Apartment  
Apartment 019 (Level 01)

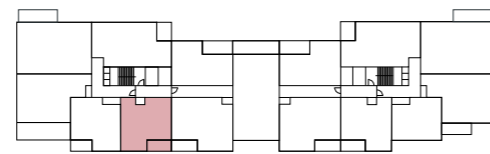
**Total Internal Area**  
53.85 sq m 579.67 sq ft



### Apartment Dimensions

Kitchen / Living / Dining	5.94m x 3.82m	19'6" x 12'6"
Bedroom	4.16m x 3.34m	13'8" x 10'11"
Bathroom	2.20m x 2.05m	7'3" x 6'9"
Terrace	3.88m x 1.51m	12'9" x 5'0"

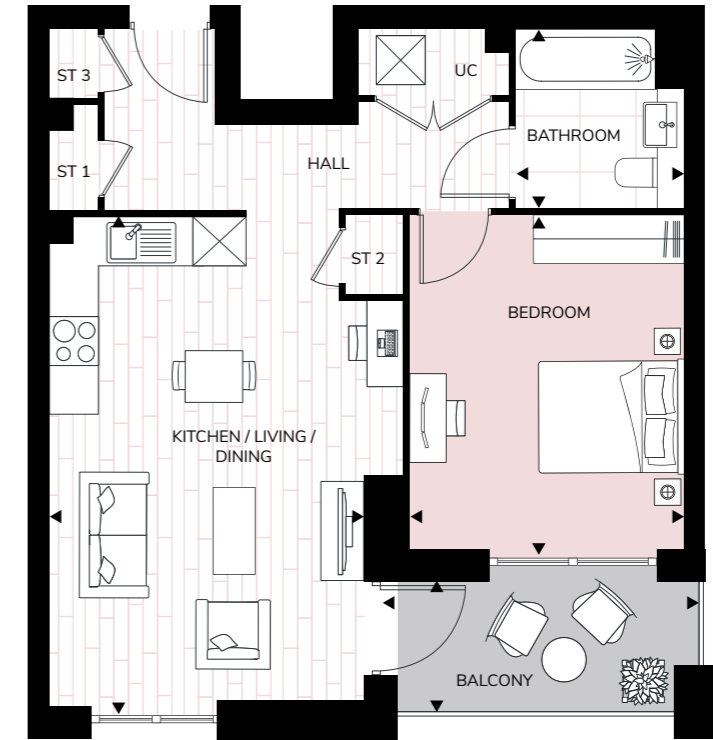
### Apartment Location



# D-15

1 Bedroom Apartment  
Apartment 034 (Level 02), 049 (Level 03) & 064 (Level 04)

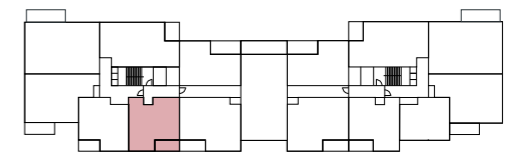
**Total Internal Area**  
53.95 sq m 580.66 sq ft



### Apartment Dimensions

Kitchen / Living / Dining	6.65m x 4.97m	21'10" x 16'4"
Bedroom	4.17m x 3.33m	13'8" x 10'11"
Bathroom	2.20m x 2.05m	7'3" x 6'9"
Balcony	3.88m x 1.58m	12'9" x 5'2"

### Apartment Location



# D-13a

1 Bedroom Apartment  
Apartment 020 (Level 01)

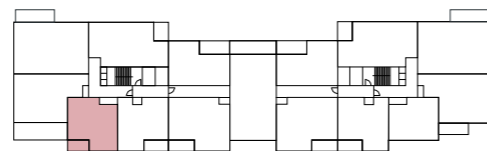
**Total Internal Area**  
54.28 sq m 584.23 sq ft



### Apartment Dimensions

Kitchen / Living / Dining	7.28m x 4.24m	23'11" x 13'11"
Bedroom	4.16m x 3.19m	13'8" x 10'6"
Bathroom	2.20m x 2.09m	7'3" x 6'10"
Terrace	3.15m x 1.70m	10'4" x 5'7"

### Apartment Location



# D-13

1 Bedroom Apartment  
Apartments 035 (Level 02), 050 (Level 03) & 065 (Level 04)

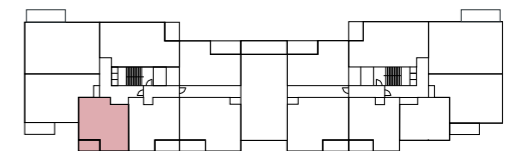
**Total Internal Area**  
54.07 sq m 582.05 sq ft



### Apartment Dimensions

Kitchen / Living / Dining	7.28m x 4.24m	23'11" x 13'11"
Bedroom	4.16m x 3.19m	13'8" x 10'6"
Bathroom	2.20m x 2.09m	7'3" x 6'10"
Balcony	3.15m x 1.58m	10'4" x 5'2"

### Apartment Location

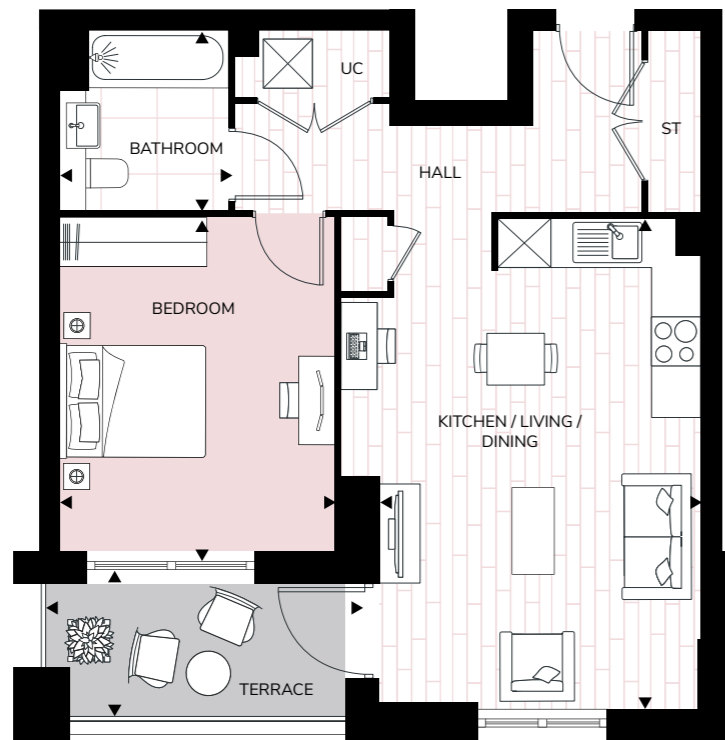


# D-16a

**Total Internal Area**  
54.12 sq m 582.60 sq ft



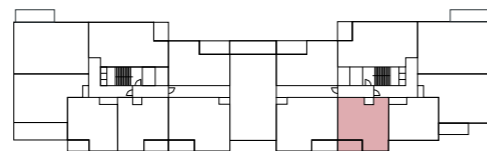
1 Bedroom Apartment  
Apartment 016 (Level 01)



### Apartment Dimensions

Kitchen / Living / Dining	5.96m x 3.82m	19'7" x 12'7"
Bedroom	4.17m x 3.34m	13'8" x 11'0"
Bathroom	2.20m x 2.05m	7'3" x 6'9"
Terrace	3.88m x 1.72m	12'9" x 5'8"

### Apartment Location

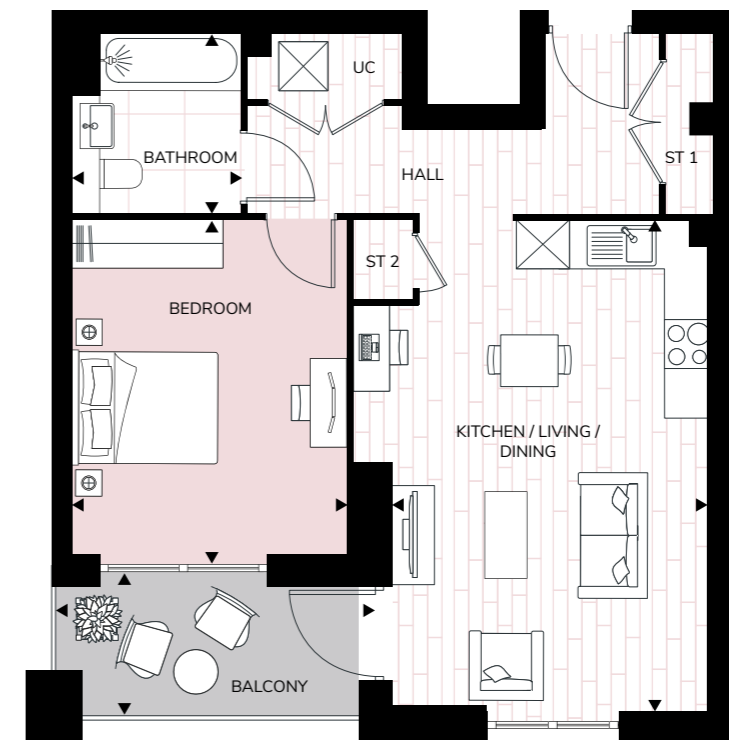


# D-16

**Total Internal Area**  
54.29 sq m 584.39 sq ft



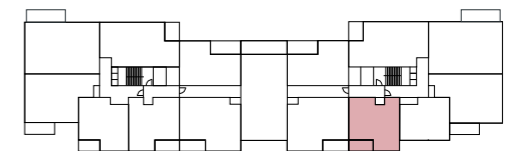
1 Bedroom Apartment  
Apartments 031 (Level 02), 046 (Level 03) & 061 (Level 04)



### Apartment Dimensions

Kitchen / Living / Dining	5.96m x 3.82m	19'7" x 12'7"
Bedroom	4.17m x 3.34m	13'8" x 11'0"
Bathroom	2.20m x 2.05m	7'3" x 6'9"
Balcony	3.88m x 1.78m	12'9" x 5'10"

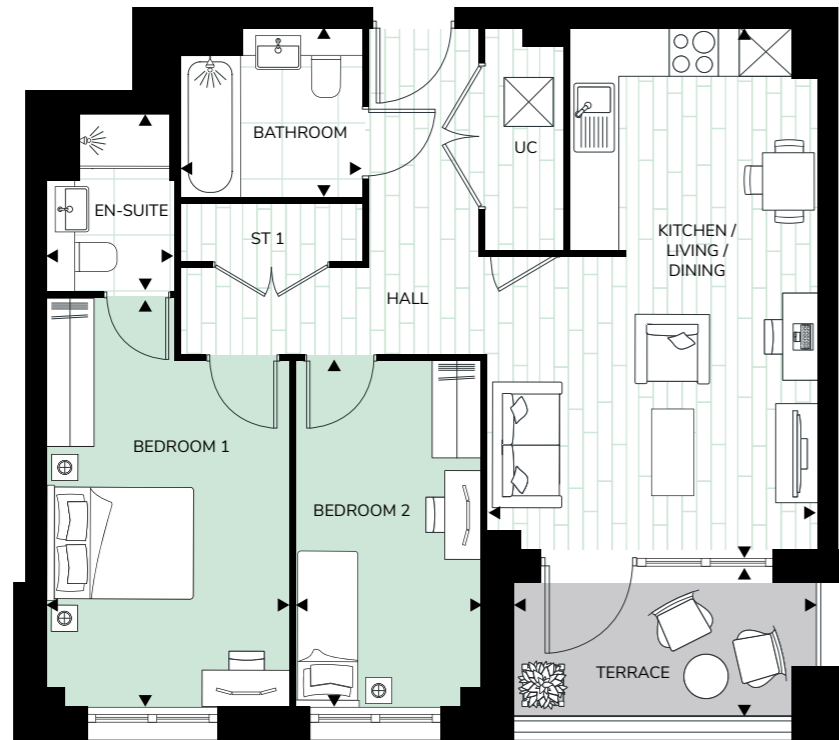
### Apartment Location



# D-17ah

2 Bedroom Apartment  
Apartment 017 (Level 01)

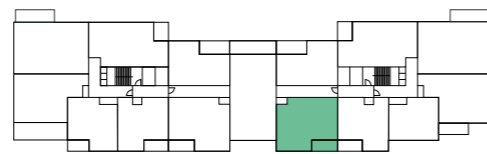
Total Internal Area  
68.15 sq m 733.55 sq ft



### Apartment Dimensions

Kitchen / Living / Dining	6.33m x 4.01m	20'9" x 13'2"
Bedroom 1	4.96m x 2.93m	16'3" x 9'8"
Bedroom 2	4.20m x 2.25m	13'10" x 7'5"
Bathroom	2.20m x 2.05m	7'3" x 6'9"
Ensuite	2.18m x 1.52m	7'2" x 5"
Terrace	3.69m x 1.70m	12'1" x 5'7"

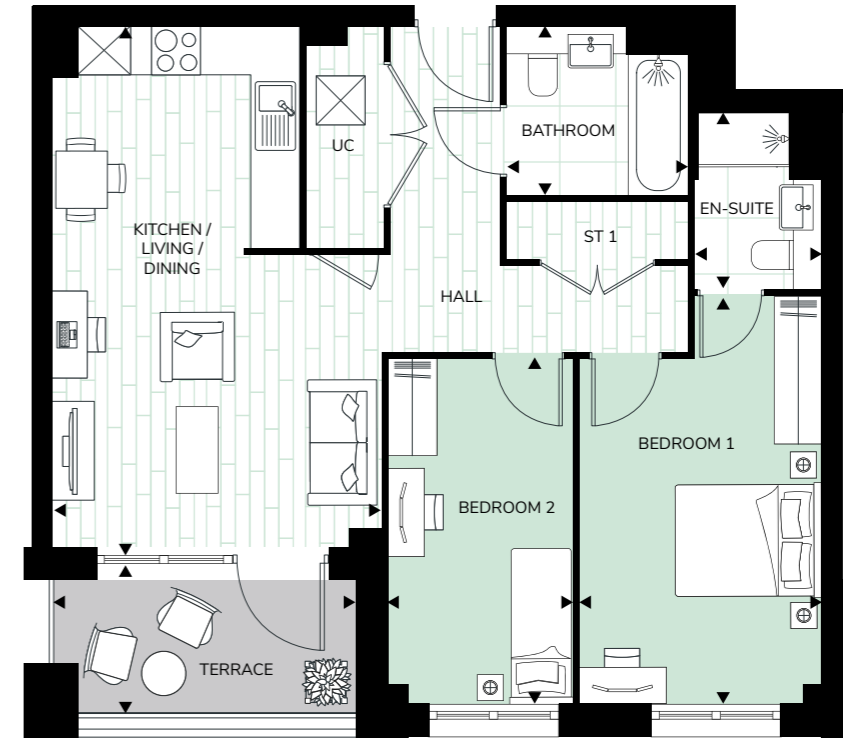
### Apartment Location



# D-17a

2 Bedroom Apartment  
Apartment 018 (Level 01)

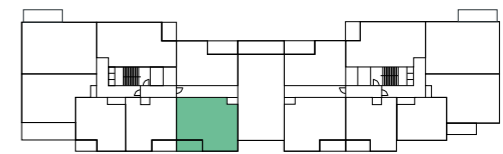
Total Internal Area  
68.15 sq m 733.55 sq ft



### Apartment Dimensions

Kitchen / Living / Dining	6.33m x 4.01m	20'9" x 13'2"
Bedroom 1	4.96m x 2.93m	16'3" x 9'8"
Bedroom 2	4.20m x 2.25m	13'10" x 7'5"
Bathroom	2.20m x 2.05m	7'3" x 6'9"
Ensuite	2.18m x 1.52m	7'2" x 5"
Terrace	3.69m x 1.70m	12'1" x 5'7"

### Apartment Location

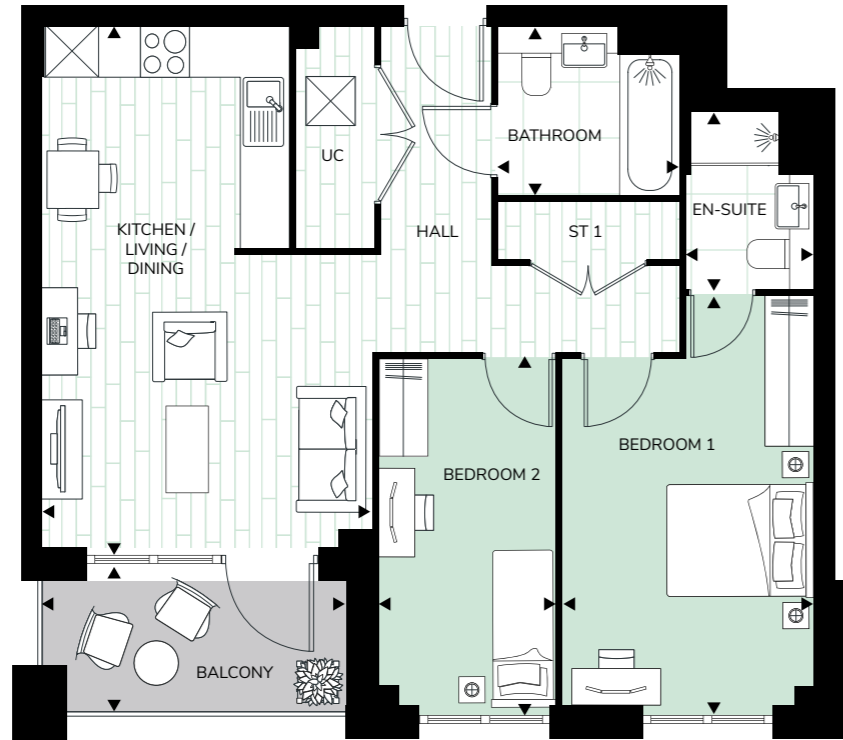


# D-17

**Total Internal Area**  
68.50 sq m 737.38 sq ft



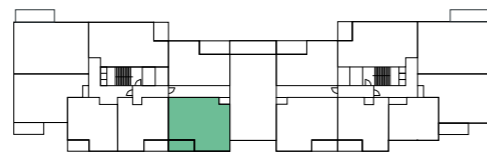
2 Bedroom Apartment  
Apartments 033 (Level 02), 048 (Level 03) & 063 (Level 04)



### Apartment Dimensions

Kitchen / Living / Dining	6.44m x 4.01m	21'2" x 13'2"
Bedroom 1	5.06m x 2.93m	16'8" x 9'8"
Bedroom 2	4.24m x 2.25m	13'11" x 7'5"
Bathroom	2.20m x 2.05m	7'3" x 6'9"
Ensuite	2.18m x 1.52m	7'2" x 5"
Balcony	3.69m x 1.78m	12'1" x 5'10"

### Apartment Location

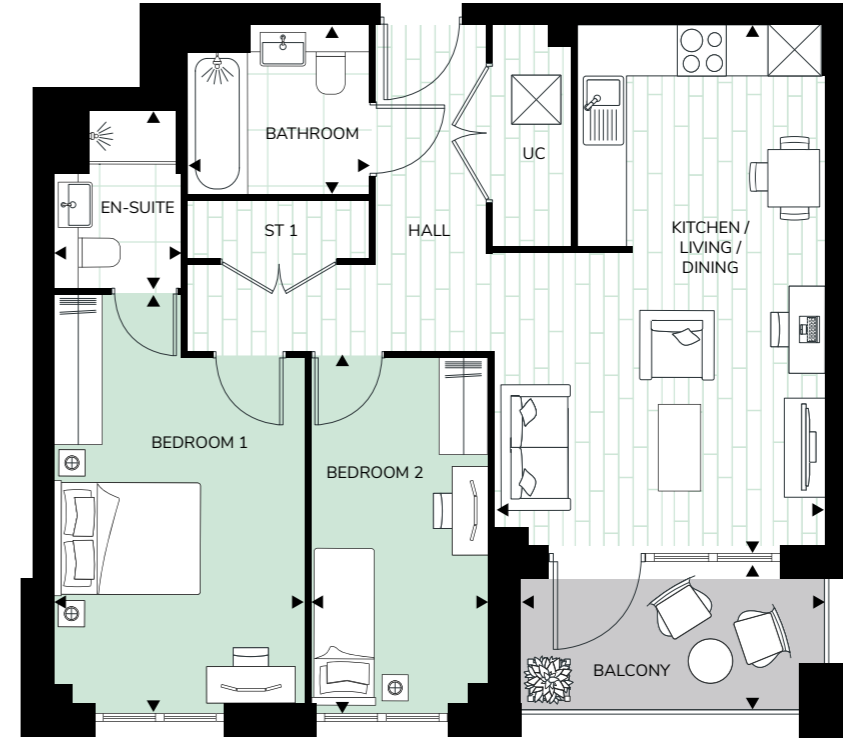


# D-17h

**Total Internal Area**  
68.50 sq m 737.38 sq ft



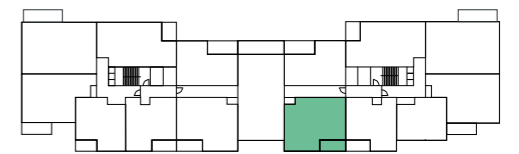
2 Bedroom Apartment  
Apartments 032 (Level 02), 047 (Level 03) & 062 (Level 04)



### Apartment Dimensions

Kitchen / Living / Dining	6.44m x 4.01m	21'2" x 13'2"
Bedroom 1	5.06m x 2.93m	16'8" x 9'8"
Bedroom 2	4.24m x 2.25m	13'11" x 7'5"
Bathroom	2.20m x 2.05m	7'3" x 6'9"
Ensuite	2.18m x 1.52m	7'2" x 5"
Balcony	3.69m x 1.78m	12'1" x 5'10"

### Apartment Location



## D-11a

2 Bedroom Apartment  
Apartment 021 (Level 01)

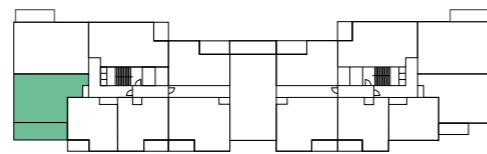
Total Internal Area  
68.65 sq m 738.95 sq ft



### Apartment Dimensions

Kitchen / Living / Dining	4.68m x 4.58m	15'4" x 15'0"
Bedroom 1	3.70m x 3.35m	12'2" x 11'0"
Bedroom 2	3.22m x 2.65m	10'7" x 8'8"
Bathroom	2.20m x 2.05m	7'3" x 6'9"
Ensuite	2.18m x 1.52m	7'2" x 5'0"
Terrace	7.99m x 2.26m	26'3" x 7'5"

### Apartment Location



## D-12a

2 Bedroom Apartment  
Apartment 014 (Level 01)

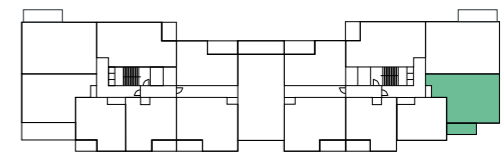
Total Internal Area  
69.02 sq m 742.88 sq ft



### Apartment Dimensions

Kitchen / Living / Dining	4.72m x 4.68m	15'6" x 15'4"
Bedroom 1	3.77m x 3.35m	12'5" x 11'0"
Bedroom 2	3.51m x 2.65m	11'6" x 8'8"
Bathroom	2.20m x 2.05m	7'3" x 6'9"
Ensuite	2.18m x 1.52m	7'2" x 5'0"
Balcony	4.45m x 1.57m	14'7" x 5'2"

### Apartment Location

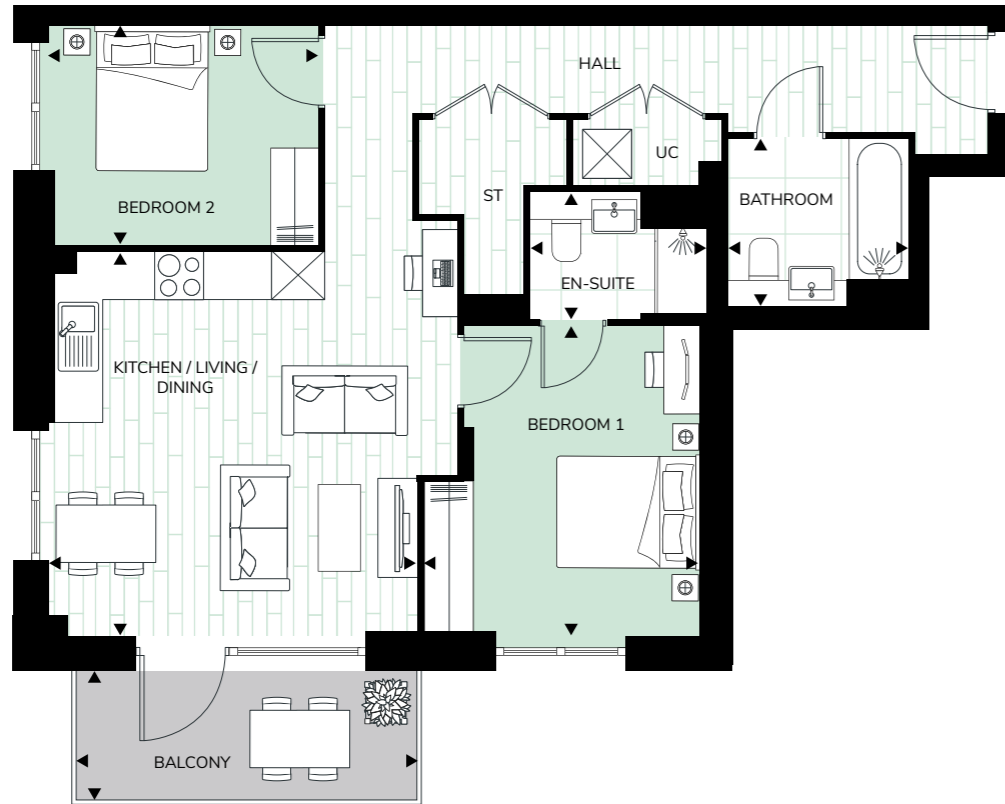


# D-11

**Total Internal Area**  
69.15 sq m 744.32 sq ft



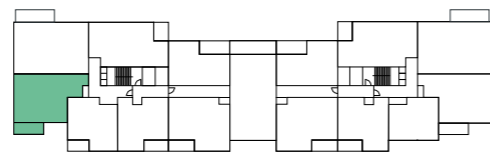
2 Bedroom Apartment  
Apartments 036 (Level 02), 051 (Level 03) & 066 (Level 04)



### Apartment Dimensions

Kitchen / Living / Dining	4.68m x 4.58m	15'4" x 15'0"
Bedroom 1	3.70m x 3.35m	12'2" x 11'0"
Bedroom 2	3.22m x 2.65m	10'7" x 8'8"
Bathroom	2.20m x 2.05m	7'3" x 6'9"
Ensuite	2.18m x 1.52m	7'2" x 5'0"
Balcony	4.15m x 1.57m	13'7" x 5'2"

### Apartment Location



# D-12

**Total Internal Area**  
69.68 sq m 750.05 sq ft



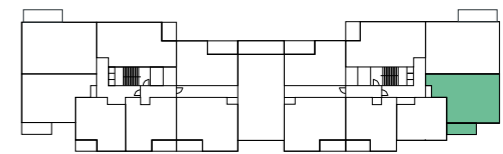
2 Bedroom Apartment  
Apartments 029 (Level 02), 044 (Level 03) & 059 (Level 04)



### Apartment Dimensions

Kitchen / Living / Dining	5.24m x 4.68m	17'2" x 15'4"
Bedroom 1	3.77m x 3.35m	12'5" x 11'0"
Bedroom 2	3.55m x 2.65m	11'8" x 8'8"
Bathroom	2.20m x 2.05m	7'3" x 6'9"
Ensuite	2.18m x 1.52m	7'2" x 5'0"
Balcony	4.45m x 1.57m	14'7" x 5'2"

### Apartment Location



# D-03

2 Bedroom Apartment  
Apartment 003 (Level 00)

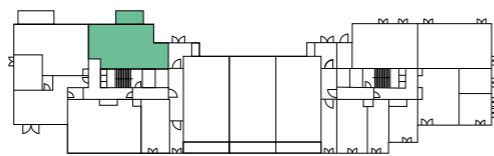
**Total Internal Area**  
71.07 sq m 765.02 sq ft



### Apartment Dimensions

Kitchen / Living / Dining	6.24m x 4.37m	20'6" x 14'4"
Bedroom 1	3.92m x 3.46m	12'11" x 11'4"
Bedroom 2	3.72m x 3.32m	12'2" x 10'11"
Bathroom	2.60m x 2.20m	5'6" x 6'9"
Terrace	4.17m x 1.58m	13'8" x 5'2"

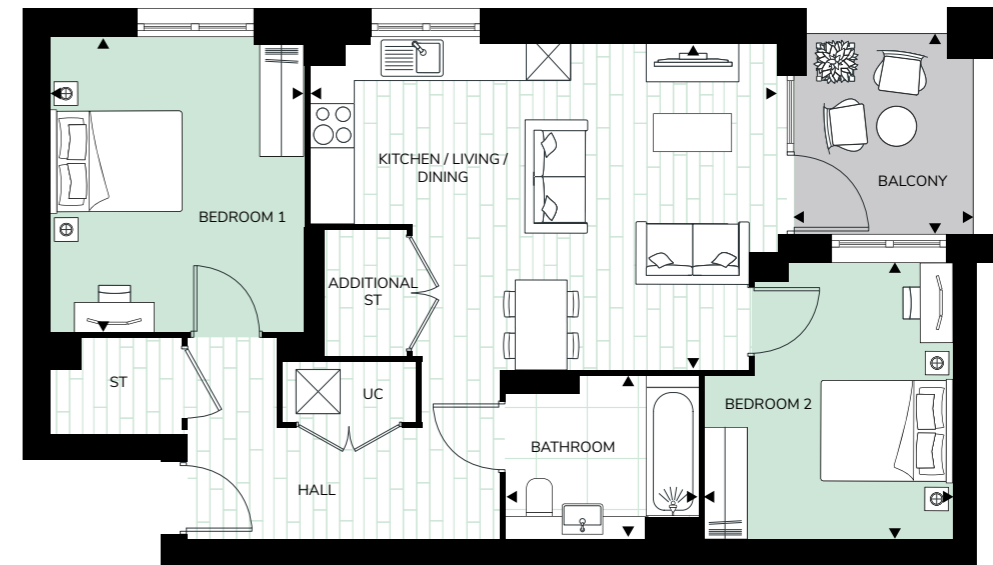
### Apartment Location



# D-08a

2 Bedroom Apartment  
Apartment 008 (Level 01)

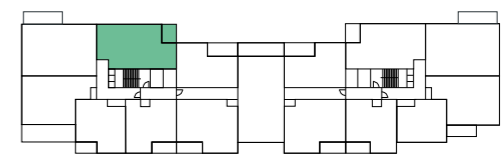
**Total Internal Area**  
72.32 sq m 778.49 sq ft



### Apartment Dimensions

Kitchen / Living / Dining	6.27m x 4.46m	20'7" x 14'8"
Bedroom 1	4.04m x 3.43m	13'3" x 11'3"
Bedroom 2	3.32m x 3.79m	10'11" x 12'2"
Bathroom	2.60m x 2.20m	8'6" x 7'3"
Balcony	2.77m x 2.47m	9'1" x 8'1"

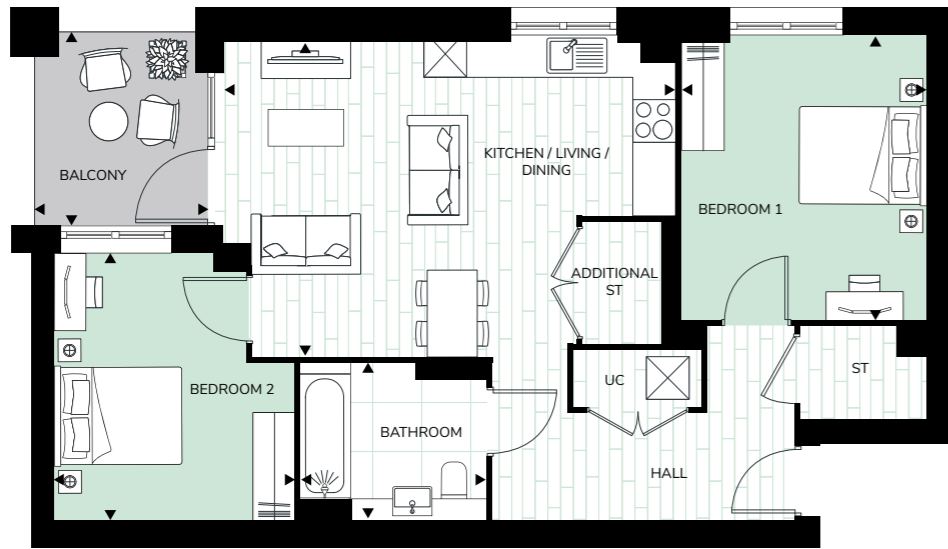
### Apartment Location



# D-08ah

2 Bedroom Apartment  
Apartment 012 (Level 01)

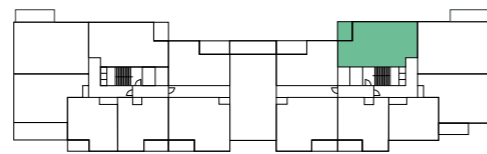
**Total Internal Area**  
72.32 sq m 778.49 sq ft



### Apartment Dimensions

Kitchen / Living / Dining	6.27m x 4.46m	20'7" x 14'8"
Bedroom 1	4.04m x 3.43m	13'3" x 11'3"
Bedroom 2	3.32m x 3.79m	10'11" x 12'2"
Bathroom	2.60m x 2.20m	8'6" x 7'3"
Balcony	2.77m x 2.47m	9'1" x 8'1"

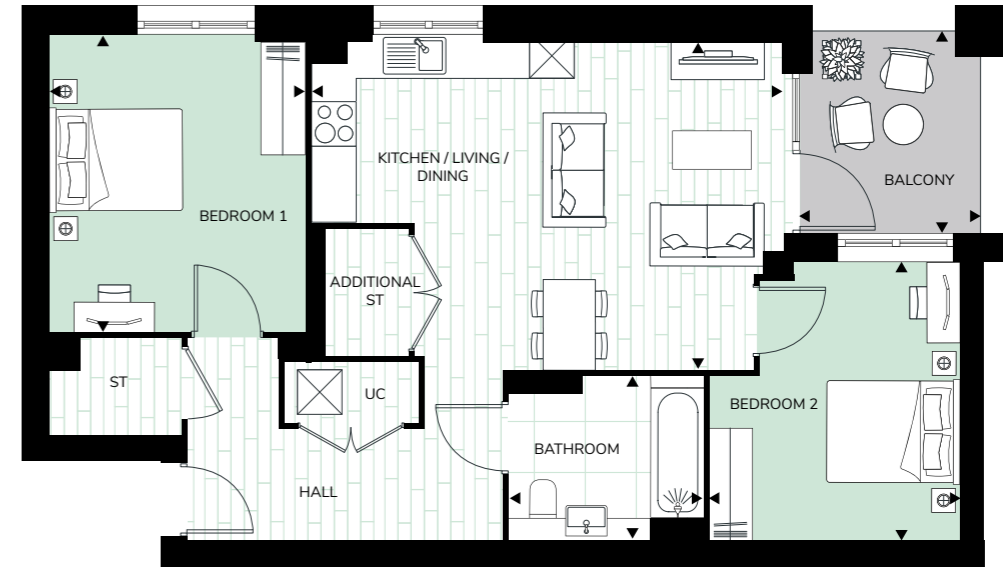
### Apartment Location



# D-08

2 Bedroom Apartment  
Apartments 023 (Level 02) & 038 (Level 03)

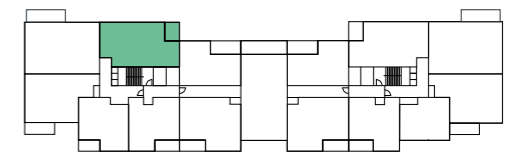
**Total Internal Area**  
72.49 sq m 780.29 sq ft



### Apartment Dimensions

Kitchen / Living / Dining	6.27m x 4.46m	20'7" x 14'8"
Bedroom 1	4.04m x 3.43m	13'3" x 11'3"
Bedroom 2	3.79m x 3.32m	11'0" x 12'5"
Bathroom	2.60m x 2.20m	8'6" x 7'3"
Balcony	2.89m x 2.44m	9'6" x 8'0"

### Apartment Location

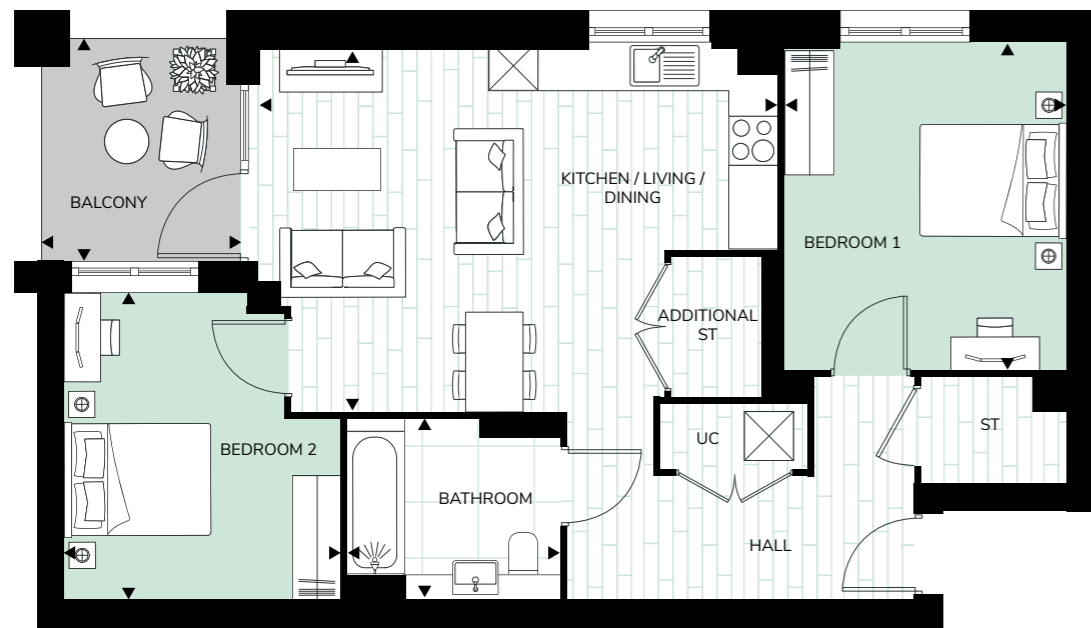


## D-08h

Total Internal Area  
72.49 sq m 780.29 sq ft



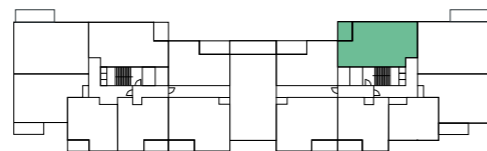
2 Bedroom Apartment  
Apartments 027 (Level 02) & 042 (Level 03)



### Apartment Dimensions

Kitchen / Living / Dining	6.27m x 4.46m	20'7" x 14'8"
Bedroom 1	4.04m x 3.43m	13'3" x 11'3"
Bedroom 2	3.79m x 3.32m	11'0" x 12'5"
Bathroom	2.60m x 2.20m	8'6" x 7'3"
Balcony	2.89m x 2.44m	9'6" x 8'0"

### Apartment Location



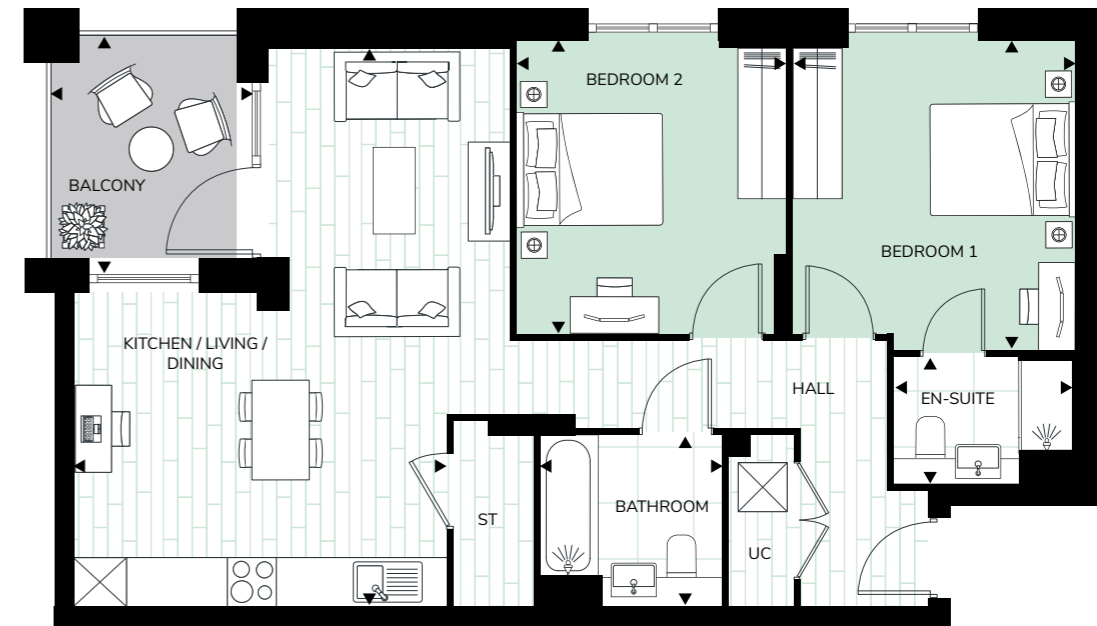
72

## D-18h

Total Internal Area  
72.85 sq m 784.18 sq ft



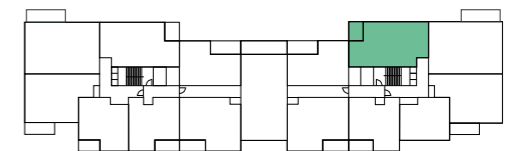
2 Bedroom Apartment  
Apartment 057 (Level 04)



### Apartment Dimensions

Kitchen / Living / Dining	6.74m x 4.53m	22'1" x 14'10"
Bedroom 1	3.75m x 3.41m	12'4" x 11'3"
Bedroom 2	3.54m x 3.31m	11'7" x 10'10"
Bathroom	2.20m x 2.05m	7'3" x 6'9"
Ensuite	2.18m x 1.52m	7'2" x 5'0"
Balcony	2.89m x 2.44m	9'6" x 8'0"

### Apartment Location

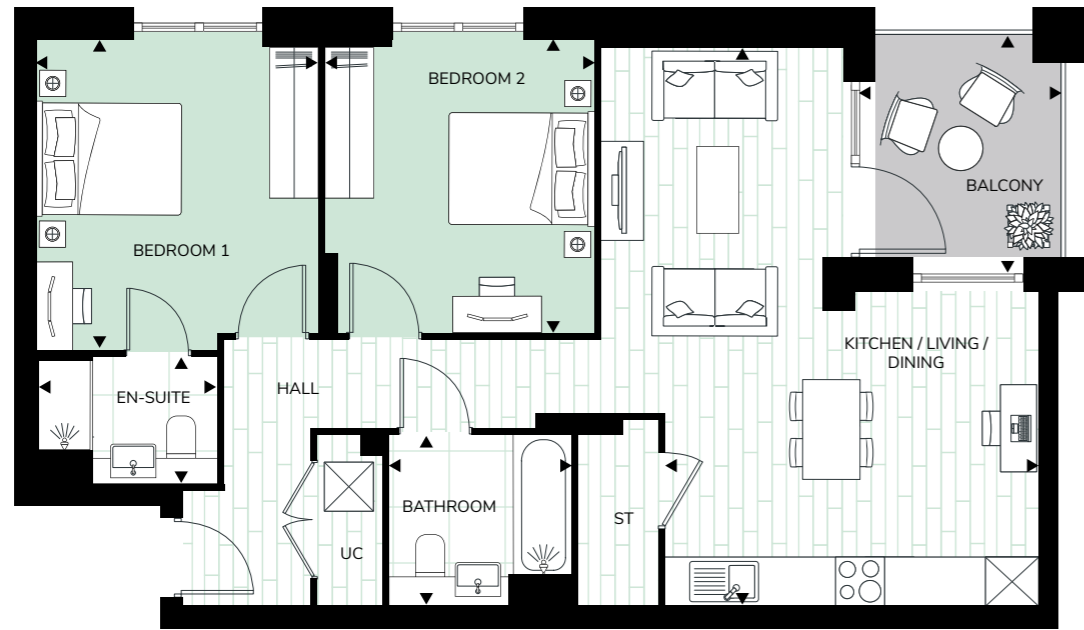


73

# D-18

2 Bedroom Apartment  
Apartment 053 (Level 04)

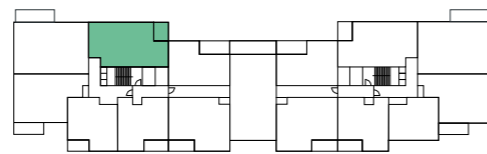
**Total Internal Area**  
72.85 sq m 784.18 sq ft



### Apartment Dimensions

Kitchen / Living / Dining	6.74m x 4.53m	22'1" x 14'10"
Bedroom 1	3.75m x 3.41m	12'4" x 11'3"
Bedroom 2	3.54m x 3.31m	11'7" x 10'10"
Bathroom	2.20m x 2.05m	7'3" x 6'9"
Ensuite	2.18m x 1.52m	7'2" x 5'0"
Balcony	2.89m x 2.44m	9'6" x 8'0"

### Apartment Location



# D-02

2 Bedroom Apartment  
Apartment 002 (Level 00)

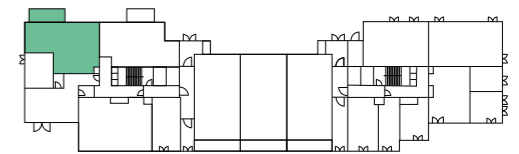
**Total Internal Area**  
73.88 sq m 795.26 sq ft



### Apartment Dimensions

Kitchen / Living / Dining	5.09m x 4.56m	16'9" x 15'0"
Bedroom 1	5.34m x 2.75m	17'6" x 9'0"
Bedroom 2	4.08m x 3.25m	13'5" x 10'8"
Bathroom	2.20m x 2.05m	7'3" x 6'9"
Ensuite	2.18m x 1.52m	7'2" x 5'0"
Terrace	5.41m x 1.58m	17'9" x 5'2"

### Apartment Location



# D-01

2 Bedroom Apartment  
Apartment 001 (Level 00)

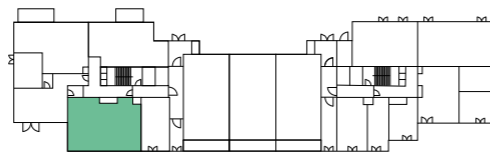
Total Internal Area  
81.03 sq m 872.18 sq ft



### Apartment Dimensions

Kitchen / Living / Dining	7.22m x 4.42m	23'9" x 14'6"
Bedroom 1	4.61m x 3.53m	15'2" x 11'7"
Bedroom 2	3.97m x 3.18m	13'0" x 10'5"
Bathroom	2.20m x 2.05m	7'3" x 6'9"
Ensuite	2.18m x 1.52m	7'2" x 5'0"
Terrace	3.35m x 1.70m	11'0" x 5'7"

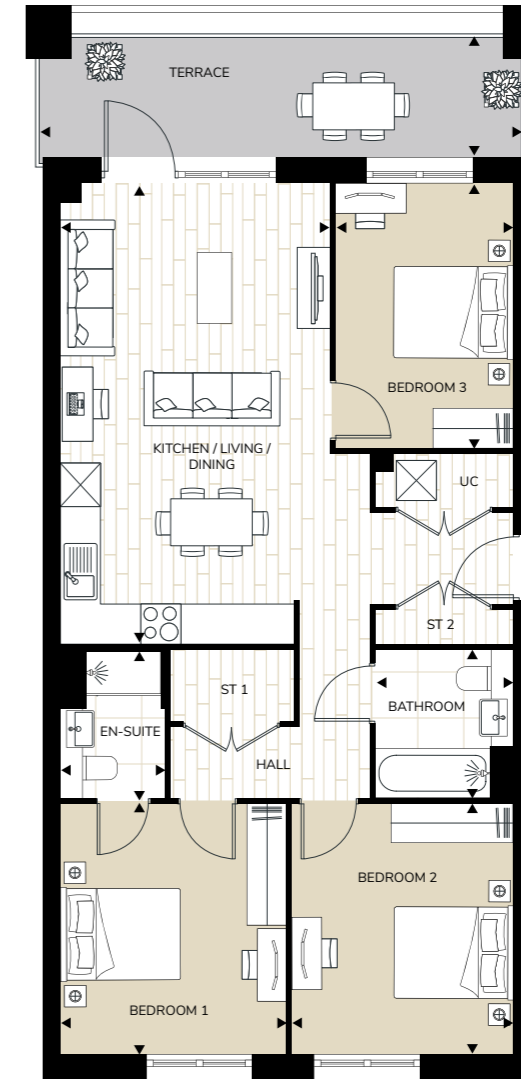
### Apartment Location



# D-10a

3 Bedroom Apartment  
Apartment 010 (Level 01)

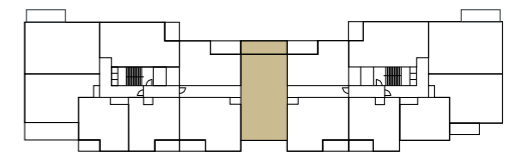
Total Internal Area  
86.88 sq m 935.13 sq ft



### Apartment Dimensions

Kitchen / Living / Dining	6.81m x 3.99m	22'4" x 13x1"
Bedroom 1	3.72m x 3.35m	12'3" x 11'0"
Bedroom 2	3.72m x 3.29m	12'3" x 10'10"
Bedroom 3	3.91m x 2.65m	12'10" x 8'8"
Bathroom	2.20m x 2.05m	7'3" x 6'9"
Ensuite	2.18m x 1.52m	7'2" x 5'0"
Terrace	7.15m x 1.72m	23'6" x 5'8"

### Apartment Location

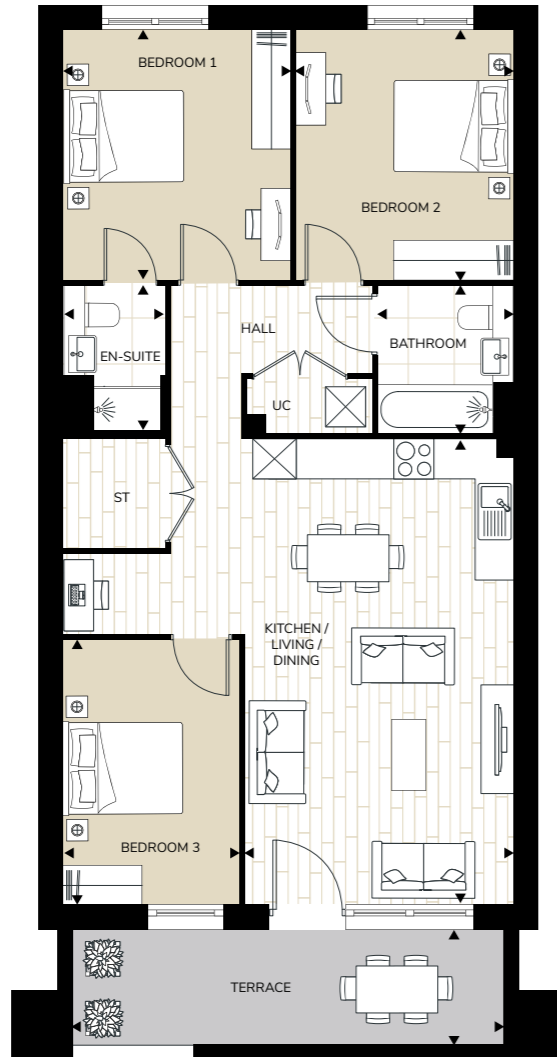


# D-05

**Total Internal Area**  
87.18 sq m 938.36 sq ft



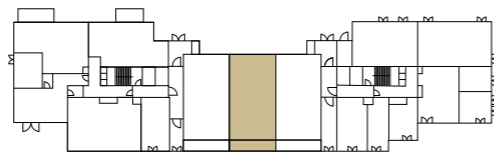
3 Bedroom Apartment  
Apartment 005 (Level 00)



### Apartment Dimensions

Kitchen / Living / Dining	6.90m x 3.99m	22'8" x 13'1"
Bedroom 1	5.37m x 3.40m	17'8" x 11'2"
Bedroom 2	3.68m x 3.24m	12'1" x 10'8"
Bedroom 3	3.91m x 2.65m	12'10" x 8'8"
Bathroom	2.20m x 2.05m	7'3" x 6'9"
Ensuite	2.18m x 1.51m	7'2" x 5'0"
Terrace	6.41m x 1.69m	21'1" x 5'7"

### Apartment Location

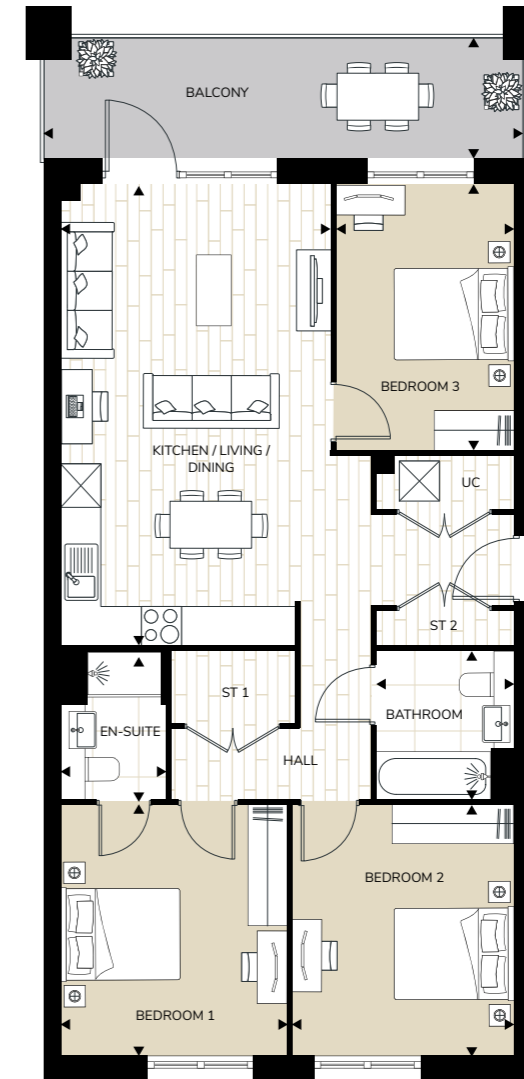


# D-10

**Total Internal Area**  
87.38 sq m 940.50 sq ft



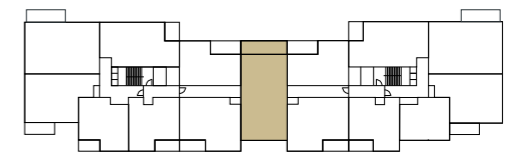
3 Bedroom Apartment  
Apartments 025 (Level 02), 040 (Level 03) & 055 (Level 04)



### Apartment Dimensions

Kitchen / Living / Dining	6.81m x 3.99m	22'4" x 13x1"
Bedroom 1	3.76m x 3.35m	12'4" x 11'0"
Bedroom 2	3.72m x 3.29m	12'3" x 10'10"
Bedroom 3	3.91m x 2.53m	12'10" x 8'4"
Bathroom	2.20m x 2.05m	7'3" x 6'9"
Ensuite	2.18m x 1.52m	7'2" x 5'0"
Balcony	7.15m x 1.82m	23'6" x 6'0"

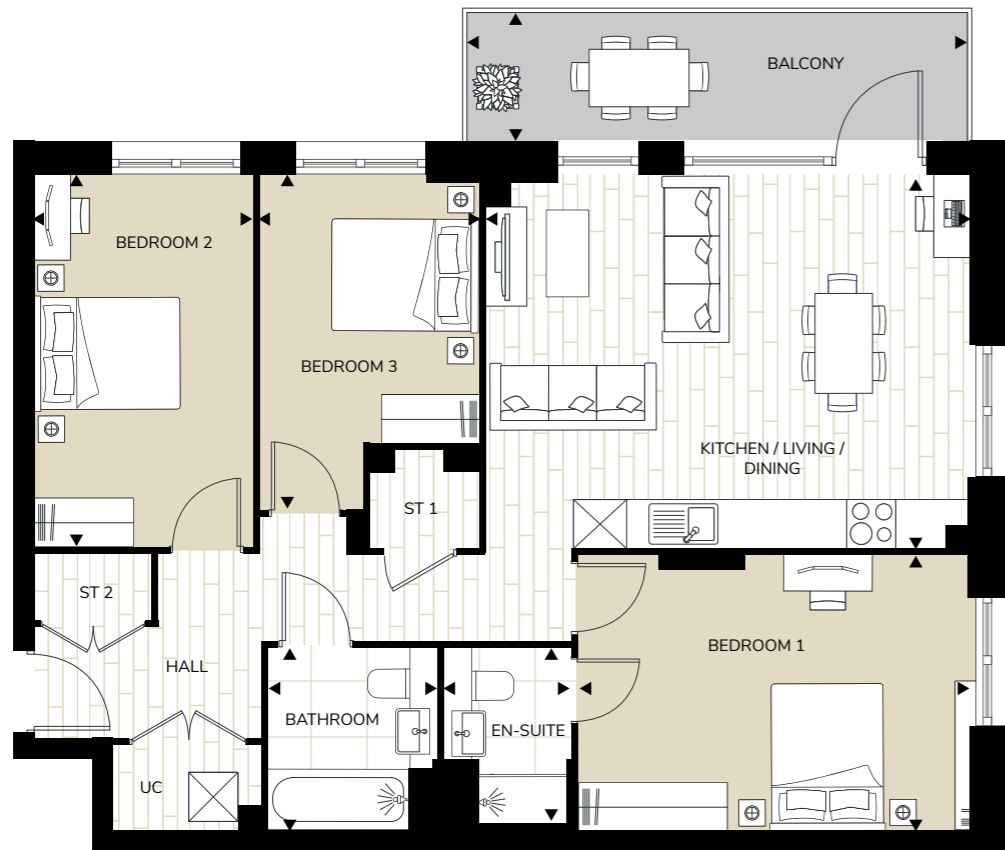
### Apartment Location



# D-07ah

3 Bedroom Apartment  
Apartment 013 (Level 01)

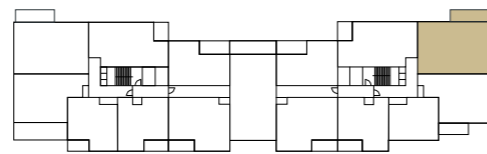
Total Internal Area  
89.20 sq m 960.10 sq ft



### Apartment Dimensions

Kitchen / Living / Dining	5.87m x 4.53m	19'3" x 14'11"
Bedroom 1	4.74m x 3.33m	15'7" x 10'11"
Bedroom 2	4.51m x 2.65m	14'10" x 8'8"
Bedroom 3	4.06m x 2.66m	13'4" x 8'9"
Bathroom	2.20m x 2.05m	7'3" x 6'9"
Ensuite	2.18m x 1.52m	7'2" x 5'0"
Balcony	6.06m x 1.57m	19'11" x 5'2"

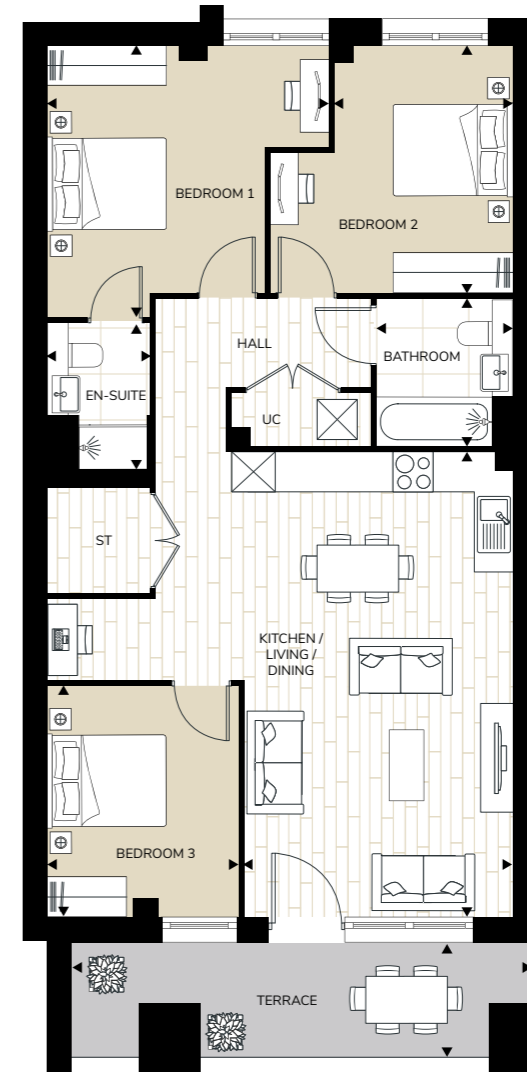
### Apartment Location



# D-04

3 Bedroom Apartment  
Apartment 004 (Level 00)

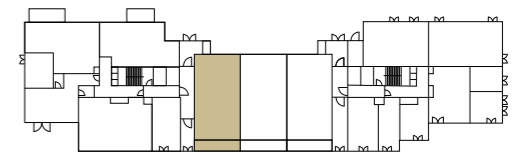
Total Internal Area  
89.63 sq m 964.72 sq ft



### Apartment Dimensions

Kitchen / Living / Dining	6.88m x 4.01m	22'7" x 13'2"
Bedroom 1	4.06m x 4.21m	13'4" x 13'10"
Bedroom 2	3.71m x 2.66m	12'2" x 8'9"
Bedroom 3	3.42m x 2.86m	11'3" x 9'5"
Bathroom	2.20m x 2.05m	7'3" x 6'9"
Ensuite	2.18m x 1.52m	7'2" x 5'0"
Terrace	6.87m x 1.69m	22'7" x 5'7"

### Apartment Location

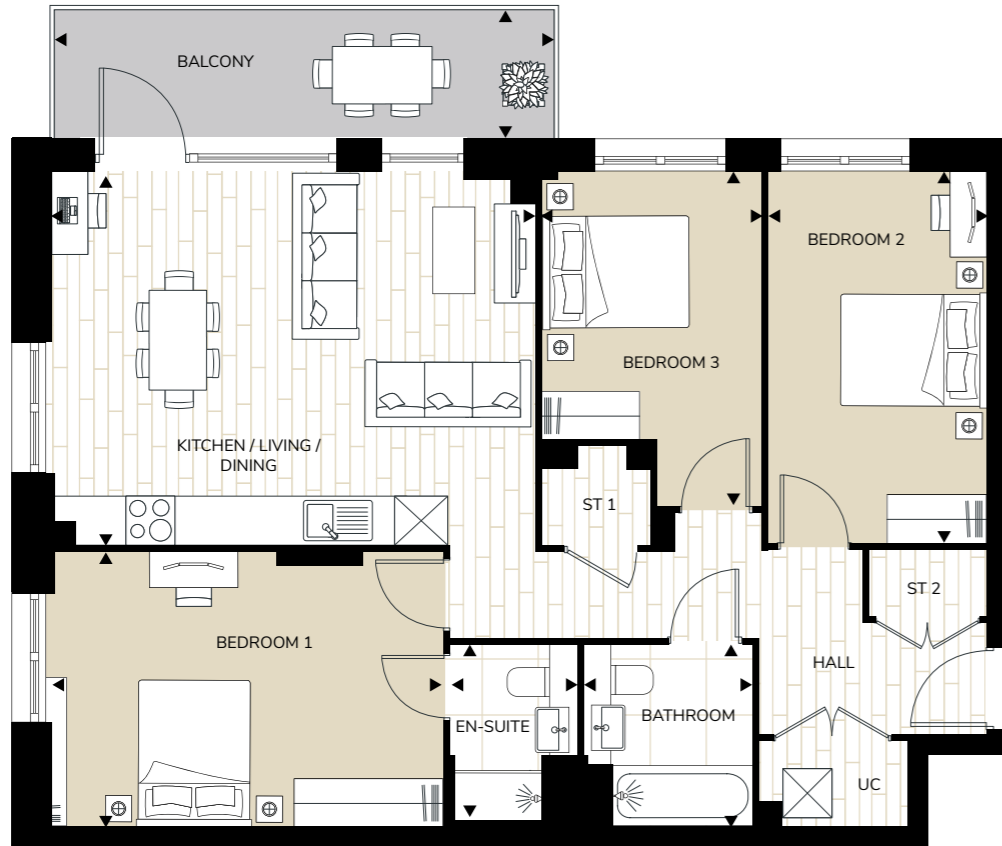


# D-07a

**Total Internal Area**  
89.96 sq m 968.28 sq ft



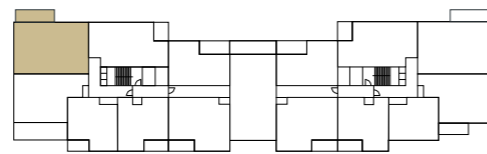
3 Bedroom Apartment  
Apartment 007 (Level 01)



### Apartment Dimensions

Kitchen / Living / Dining	5.87m x 4.53m	19'3" x 14'11"
Bedroom 1	4.74m x 3.33m	15'7" x 10'11"
Bedroom 2	4.51m x 2.65m	14'10" x 8'8"
Bedroom 3	4.06m x 2.66m	13'4" x 8'9"
Bathroom	2.20m x 2.05m	7'3" x 6'9"
Ensuite	2.18m x 1.52m	7'2" x 5'0"
Balcony	6.06m x 1.57m	19'11" x 5'2"

### Apartment Location

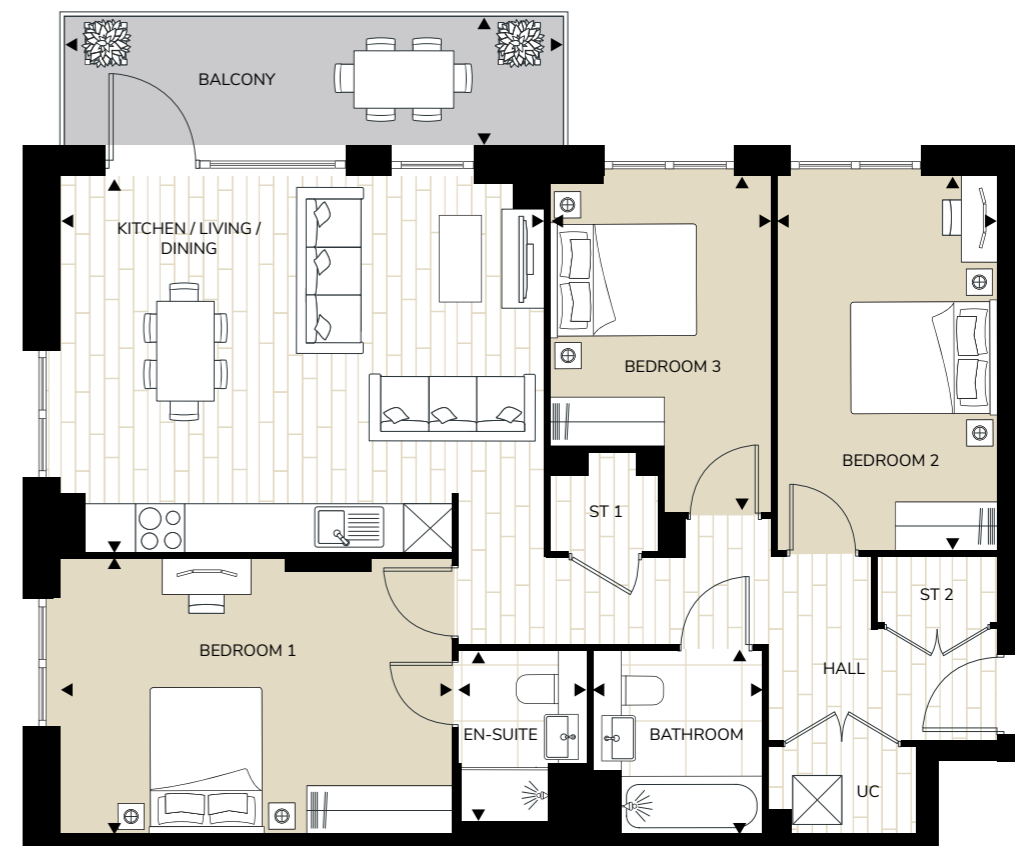


# D-07

**Total Internal Area**  
89.96 sq m 968.28 sq ft



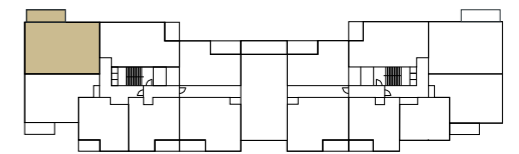
3 Bedroom Apartment  
Apartments 022 (Level 02), 037 (Level 03) & 052 (Level 04)



### Apartment Dimensions

Kitchen / Living / Dining	6.07m x 4.97m	19'11" x 16'4"
Bedroom 1	4.74m x 3.33m	15'7" x 10'11"
Bedroom 2	4.51m x 2.65m	14'10" x 8'8"
Bedroom 3	4.06m x 2.28m	13'4" x 7'6"
Bathroom	2.20m x 2.05m	7'3" x 6'9"
Ensuite	2.18m x 1.52m	7'2" x 5'0"
Balcony	6.06m x 1.57m	19'11" x 5'2"

### Apartment Location

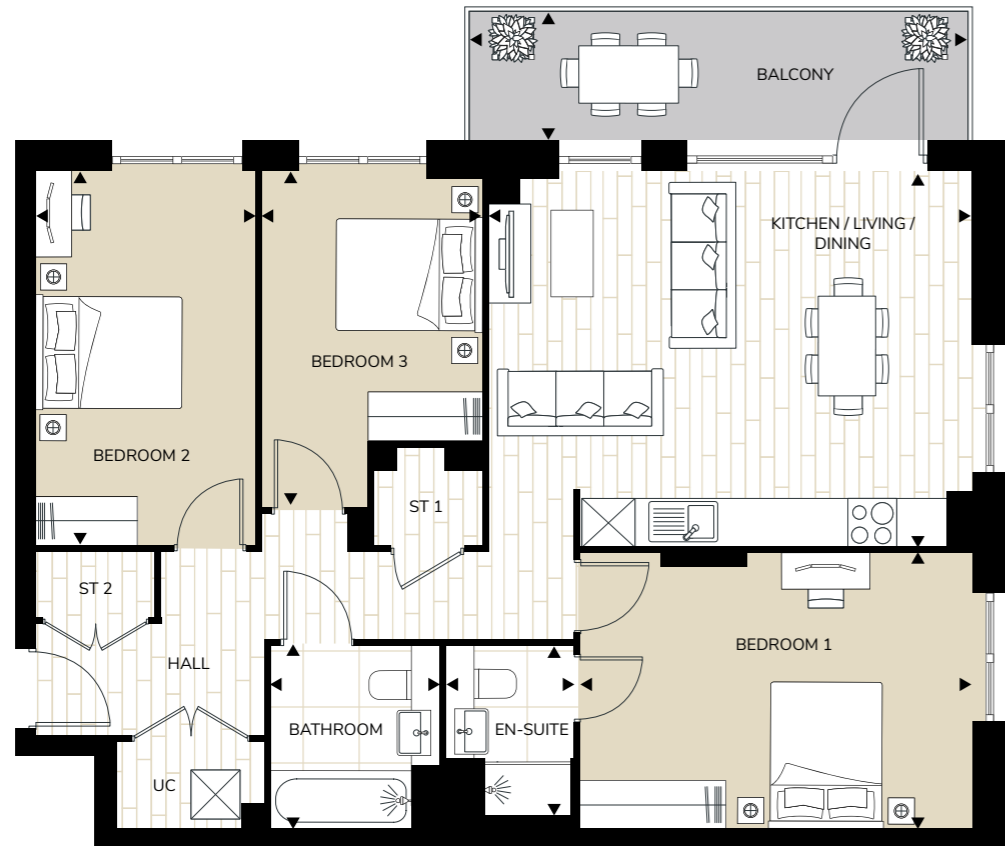


# D-07h

**Total Internal Area**  
89.96 sq m 968.28 sq ft



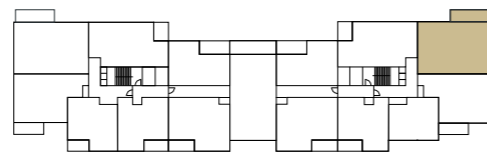
3 Bedroom Apartment  
Apartments 028 (Level 02), 043 (Level 03) & 058 (Level 04)



### Apartment Dimensions

Kitchen / Living / Dining	6.07m x 4.97m	19'11" x 16'4"
Bedroom 1	4.74m x 3.33m	15'7" x 10'11"
Bedroom 2	4.51m x 2.65m	14'10" x 8'8"
Bedroom 3	4.06m x 2.28m	13'4" x 7'6"
Bathroom	2.20m x 2.05m	7'3" x 6'9"
Ensuite	2.18m x 1.52m	7'2" x 5'0"
Balcony	6.06m x 1.57m	19'11" x 5'2"

### Apartment Location

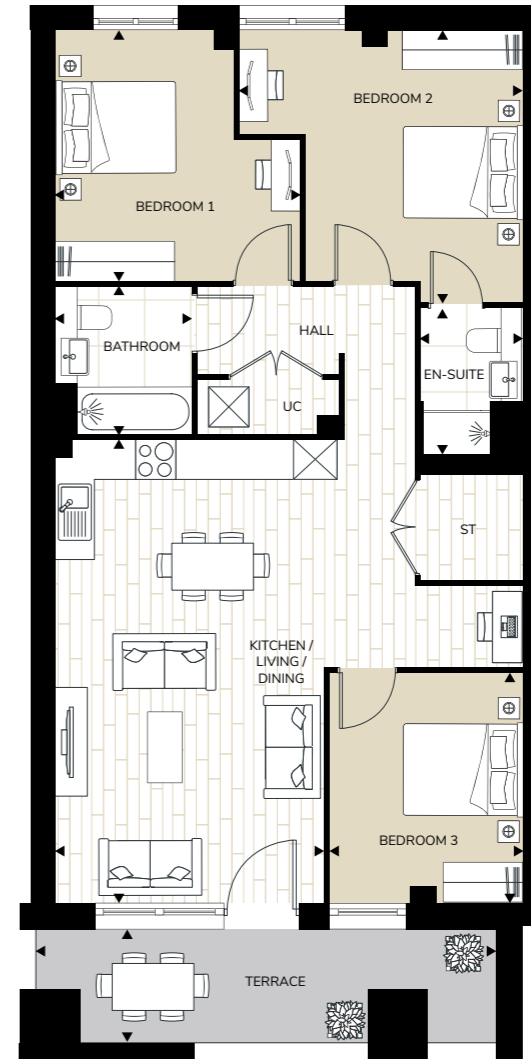


# D-06

**Total Internal Area**  
90.10 sq m 969.83 sq ft



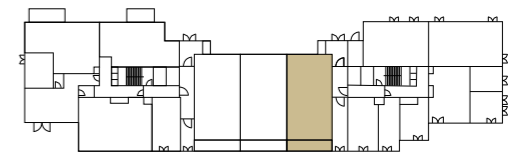
3 Bedroom Apartment  
Apartment 006 (Level 00)

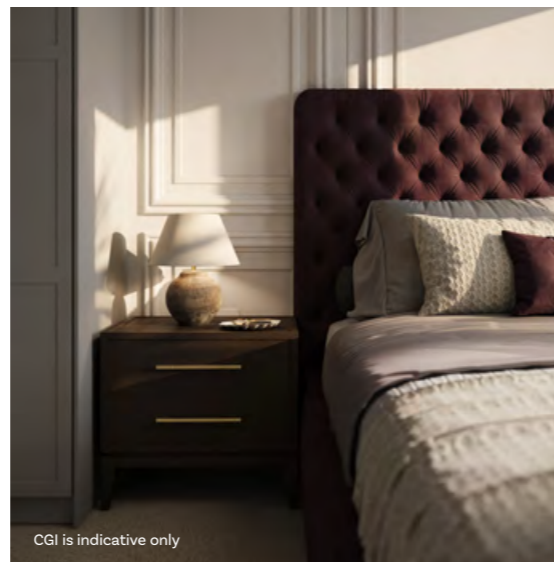


### Apartment Dimensions

Kitchen / Living / Dining	6.87m x 4.01m	22'7" x 13'2"
Bedroom 1	4.24m x 4.04m	13'11" x 13'3"
Bedroom 2	3.66m x 3.72m	12'0" x 12'3"
Bedroom 3	3.41m x 2.89m	11'2" x 9'6"
Bathroom	2.20m x 2.05m	7'3" x 6'9"
Ensuite	2.18m x 1.52m	7'2" x 5'0"
Terrace	6.87m x 1.69m	22'7" x 5'7"

### Apartment Location





## Specification

### KITCHEN

- Individually designed handleless kitchens with soft-close doors and drawers
- Matching stone worktops and upstands
- Stainless steel or granite sink and chrome / matte black tap
- Fully integrated AEG and Electrolux appliances, including oven, hood, induction hob, dishwasher and fridge/freezer

### BATHROOM

- White hand wash basin
- Back-to-wall WC pan with soft-close WC seat
- White bath
- Heated towel rail
- Ceramic wall tiles
- Porcelain floor tiles
- Wall-mounted illuminated mirror cabinet and full-height backsplash
- Shaver socket

### BEDROOM

- Carpet to bedrooms
- Wardrobe to bedroom 1

### EN SUITE

- White hand wash basin
- Back-to-wall WC pan with soft-close WC seat
- White shower tray
- Heated towel rail
- Shaver socket
- Ceramic wall tiles
- Porcelain floor tiles

### COMMUNAL AREAS AND AMENITIES

- Lifts to all floors
- Entrance lobby within each block

### GENERAL

- Video door entry
- Secure fob entrance access to lobby
- BT TV/Sky Q/FM connectivity in living area
- Fibre broadband connectivity
- Pendant lighting in living area and bedrooms
- Downlights in hallway, kitchen and bathrooms
- Flooring included throughout
- Underfloor heating to apartments
- Washer/dryer included

86

PALETTE ONE  
*White*



PALETTE TWO  
*Indigo*



PALETTE THREE  
*Dark Stone*



PALETTE FOUR  
*Hunter Green*



87

*Better for you.  
Better for the future.*

**LIGHT-FILLED, EASY LIVING**

A collection of one, two and three-bedroom homes, thoughtfully designed to lift the everyday. Many feature dual-aspect layouts that draw in ample daylight while helping maintain a fresh, comfortable feel throughout the seasons. Spacious terraces, balconies and striking corner outlooks extend your living space beyond four walls.

**OUTDOORS BUILT IN**

From ground-level gardens and play spaces, green living comes as standard. Thoughtful landscaping, shady spots and places to mingle. Places for kids to explore and everyone to enjoy more fresh air.

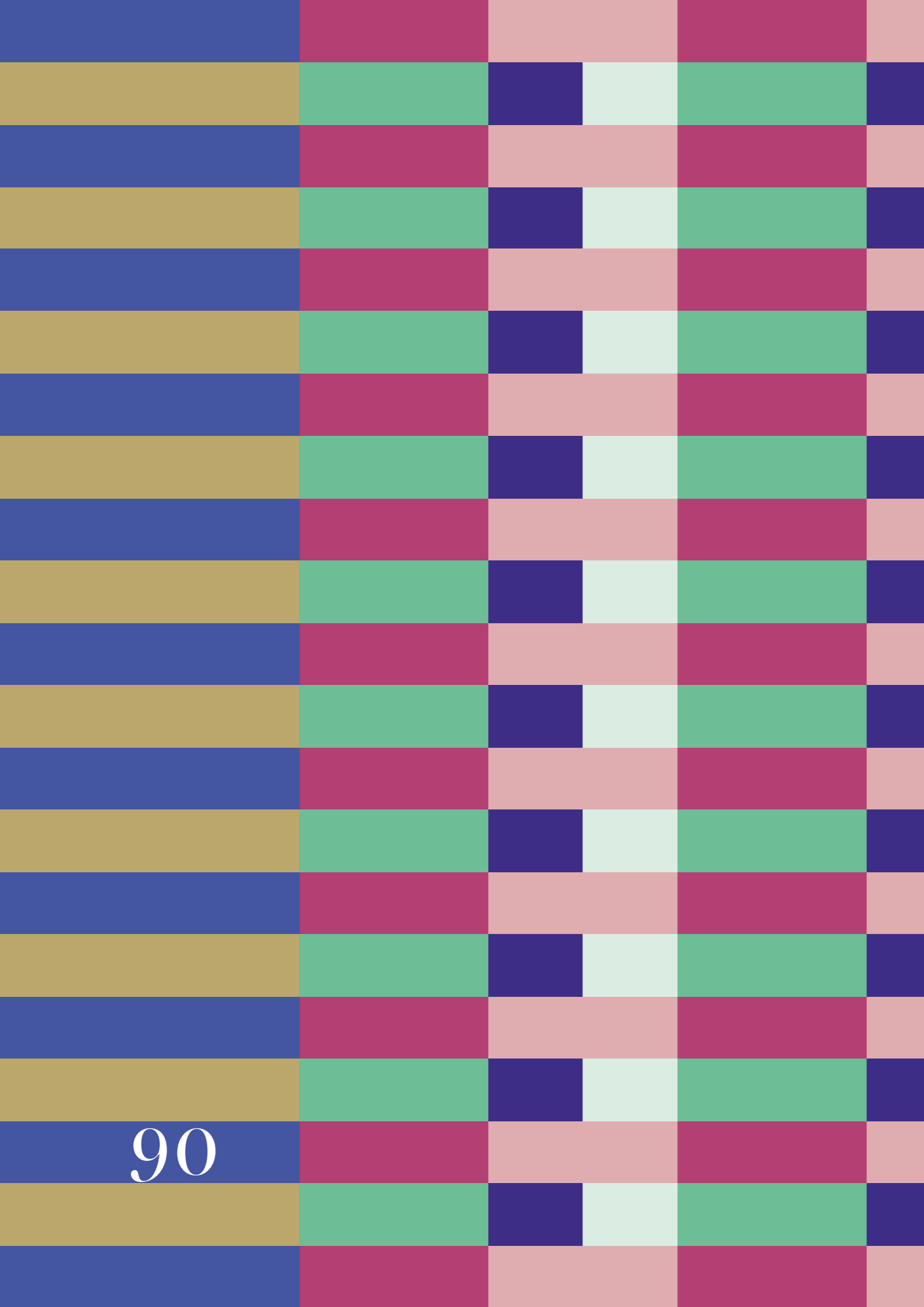
**DESIGNED TO BELONG**

Eye-catching brickwork, sculptural gables and calm, rhythmic windows give a distinctly Streatham feel. Blending architecture with greenery for a streetscape that's welcoming, characterful and proudly embedded in the neighbourhood.

**MOVE SMART, LIVE WELL**

A proposed cycle hub and people-first public spaces make getting around easy and enjoyable. More trees, comfy benches and safe, social spaces. The whole area is set up for healthier journeys, happier residents and a stronger sense of community.





# National strength. London focus.

Barratt London is part of Barratt Redrow, the UK's largest housebuilder and a FTSE 100 company with over 60 years of experience. Together, we've delivered more than 620,000 homes nationwide, combining scale with long-term thinking. In the Capital, our dedicated London team focuses on creating well-designed homes and sustainable neighbourhoods that stand the test of time. It's national strength, applied locally - building places people are proud to call home.

#### **FIVE-STAR CUSTOMER SERVICE**

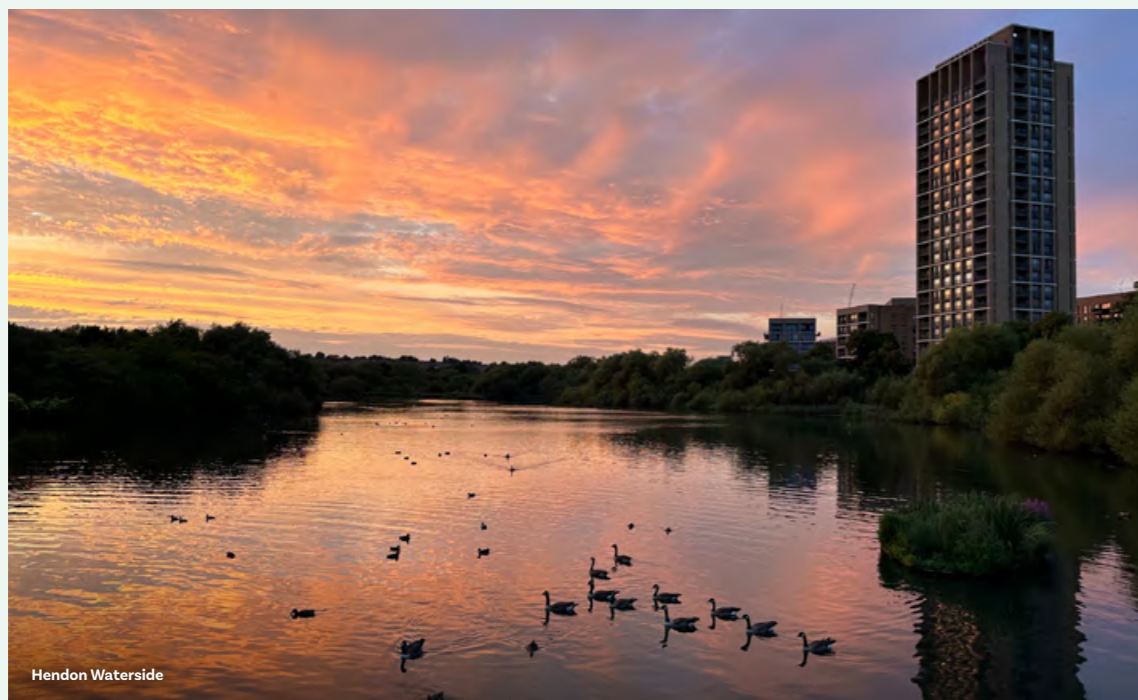
We're\* proud to be an award-winning housebuilder and are the only London developer to have been awarded the maximum five-star rating for customer satisfaction by the Home Builders Federation every year since 2010\*. For our customers, this means that when you buy a Barratt London home, you can be confident you are buying a home of quality and receiving the very best in customer service.

#### **REAL PEACE OF MIND**

Our homes come with an NHBC warranty and insurance policy, known as Buildmark, which includes a 2-year builder warranty period, followed by an 8-year insurance cover, giving you added peace of mind from the moment you move in.

\*"We", "our", "us" refer to the Barratt Redrow plc Group brands. Our Group brands include Barratt Homes, Barratt London, David Wilson Homes and Redrow.

\*"We" refers to the Barratt Redrow plc group brands including Barratt London, Barratt Homes, David Wilson Homes and Redrow. Based on HBF star rating scheme from 2010 to 2026, derived from the NHBC national new homes surveys at eight weeks and nine months (<https://www.hbf.co.uk/policy/campaigns-and-initiatives/css-star-awards/>).



## NEW HOMES QUALITY CODE

House builders and developers who build new homes will be expected to register with the New Homes Quality Board (NHQB). As long as a house builder or developer has followed the correct registration process, including completing the necessary training, introducing a complaints procedure, and following other processes and procedures that are needed to meet the requirements of this New Homes Quality Code (the code), they will become a registered developer.

Registered developers agree to follow the code and the New Homes Ombudsman Service, including accepting the decisions of the New Homes Ombudsman in relation to dealings with customers. If a registered developer does not meet the required standards or fails to accept and act in line with the decisions of the New Homes Ombudsman, they may have action taken against them, including being removed from the register of registered developers.

The code sets out the requirements that registered developers must meet. The code may be updated from time to time to reflect changes to industry best practice as well as the decisions of the New Homes Ombudsman Service. All homes built by registered developers must meet building safety and other regulations. All registered developers should aim to make sure there are no snags or defects in their properties before the keys are handed over to a customer. If there are any snags or defects, these should be put right within the agreed timescales.

## WHAT THE CODE COVERS

For the purposes of this code, 'customer' means a person who is buying or intends to buy a new home which they will live in or give to another person. (If a new home is being bought in joint names, 'the customer' includes all the joint customers.)

However, the New Homes Quality Board have also started work to consider other groups of customers and what they should be able to expect from a new home. This includes shared owners and people who are buying a new home to let to other people. Any changes the New Homes Quality Board make to the code to reflect the needs of other groups of customers will be developed through consultation, and they will continually assess and review the effectiveness of the code, and any new laws or regulations that apply.

Other areas which are not covered by the code are claims for loss of property value or blight (where a property falls in value or becomes difficult to sell because of major public work in the area), personal injury or claims that are not covered by the scheme rules of the New Homes Ombudsman Service.



Nothing in this code affects any other rights the customer has by law and does not replace any legislation that applies to the new home. Customers do not have to make a complaint to the New Homes Ombudsman Service if they are not satisfied with a matter that is covered by the code. They may decide to take other action, such as through the civil courts or other ombudsman or regulator. We are on the New Homes Quality Code register of registered developers. "We" refers to the Barratt Redrow plc group brands, including Barratt London, Barratt Homes, David Wilson Homes and Redrow.

## *Our quality promise*

As a trusted London developer, we pour our heart and skill into every detail, giving you the confidence that your new apartment or house meets the highest standards.



**Address**

Streatham Common Junction  
100 Woodgate Drive  
London SW16 5YP



**Telephone**

0330 057 6666

**Email**

[streathamcommonjunction@barrattlondon.com](mailto:streathamcommonjunction@barrattlondon.com)

**Address**

Search 'Streatham Common Junction'  
at [www.barrattlondon.com](http://www.barrattlondon.com)

Please note that all images are for illustrative purposes only. Final elevations of the property purchased may differ from those shown. Please see our Image Disclaimer for further details. The features, designs, materials and visual depictions of and in our Show Apartments and in our Show Apartment photography must be treated as general illustration and guidance. Images may also include upgrades which are available at extra cost. Furniture and furnishings are not included. Fixtures, fittings and specification may be subject to change as necessary and without notice and their accuracy or completeness is not guaranteed. Nor are they intended to form part of any contract or a warranty unless specifically incorporated into the contract. Please ask your Sales Adviser for the current specification. Individual features such as windows, brick and other materials' colours may vary, as may drainage, heating and electrical layouts. Specification may be subject to change as necessary and without notice. Development layouts and landscaping, specification, dimensions and computer generated images are not intended to form part of any contract or warranty unless specifically incorporated in writing into the contract. The development name, Streatham Common Junction and building names are for marketing purposes only and may not be the designated postal address, which may be determined by The Post Office. All information in this document is correct to the best of our knowledge at the time of issue May 2026. See [www.barratthomes.co.uk](http://www.barratthomes.co.uk) for full details. Barratt London is a brand name of BDW Trading Limited (Registered Number 03018173) which is a subsidiary of Barratt Redrow plc (Registered Number 00604574) both with registered offices at Barratt House, Cartwright Way, Forest Business Park, Bardon Hill, Coalville, Leicestershire, LE67 1UF. Calls to 03 numbers are charged at the same rate as dialling an 01 or 02 number. If your fixed line or mobile service has inclusive minutes to 01/02 numbers, then calls to 03 are counted as part of this inclusive call volume. Non-BT customers and mobile phone users should contact their service providers for information about the cost of calls.

