

DAVID WILSON HOMES



EXPERIENCE

— THE DAVID WILSON DIFFERENCE —

At David Wilson Homes we have been building quality homes across the UK for over 40 years. Our reputation is founded on our commitment to provide traditional homes in desirable locations built to a superb specification.

We* are delighted to have received over 90% homeowner recommendation since 2010. This Home Builders Federation accolade, recognizes our commitment to bring you beautiful new homes.

Our collection of beautiful homes offer a range of spacious bedroom designs, located in highly desirable locations.

We would encourage you to come and experience the David Wilson Difference and we look forward to seeing you at one of our many developments.



DAVID WILSON HOMES

WHERE QUALITY LIVES



Off Lodge Way, Great Haddon, Peterborough, PE7 3NG
 What3words /// /uv,parfed,atq

- **The Archford**
3 bedroom home
 - **The Cannington**
3 bedroom home
 - **The Hurst**
4 bedroom home
 - **The Parkin**
4 bedroom home
 - **The Kirkdale**
4 bedroom home
 - **The Herford**
4 bedroom home
 - **The Bradgate**
4 bedroom home
 - **The Ingleby**
4 bedroom home
 - **The Feregine**
4 bedroom home
 - **The Skylark**
4 bedroom home
 - **The Millard**
4 bedroom home
 - **The Winslowe**
4 bedroom home
 - **The Manning**
5 bedroom home
 - **The Uitchfield**
5 bedroom home
 - **The Moreton**
5 bedroom home
- SH **Show Home**
 - SC **Sales Centre**
 - CP **Customer Parking**
 - V **Visitor Parking Space**
 - BCP **Bin Collection Point**

- SUDS**
Sustainable Urban Drainage Systems
 - Play Area**
 - New Tree Line**
 - Informal Kickabout Area**
 - Air Source Heat Pumps**
An Air Source Heat Pump is an eco-friendly way to heat your home. It extracts heat from the air and uses it to heat your home. It's a great way to reduce your energy bills and your carbon footprint.
 - Electric Vehicle Charging**
An electric vehicle charging point is a facility that allows electric vehicles to be recharged. It's a great way to reduce your carbon footprint and your energy bills.
 - Photovoltaic Panels**
Photovoltaic panels are a great way to generate renewable energy. They convert sunlight into electricity, which can be used to power your home.
- Giving nature a home on this development:**
- Hedgehog Highway**
 - Bird Box**
Starling Nest Box
 - Bat Box**
Enclosed Bat Box
 - Swift Nesting Brick**
Sparrow Terrace

Some of our sustainability features are subject to change. Please refer to our website for more information.



See the Difference at dwh.co.uk

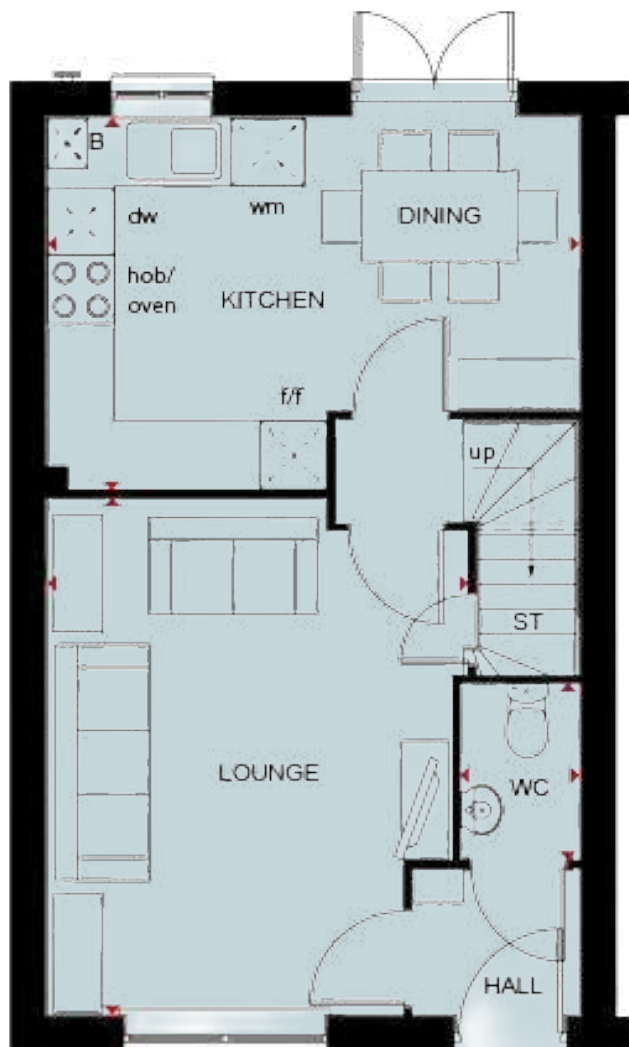
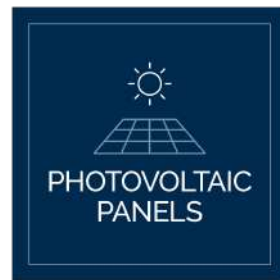
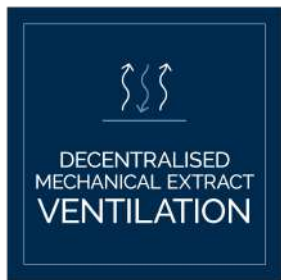


DAVID WILSON HOMES
WHERE QUALITY LIVES

Images and development layouts are for illustrative purposes, should be used for general guidance only and are not intended to form part of any contract or warranty unless specifically incorporated in writing. Development layouts including house types and tenures, the location of affordable housing, parking arrangements, play areas, landscaping and public open spaces are subject to change including any changes required due to a change in planning permission. Great Haddon is a marketing name only and may not be the designated postal address, which may be determined by The Post Office. n2359_600 Rev: F

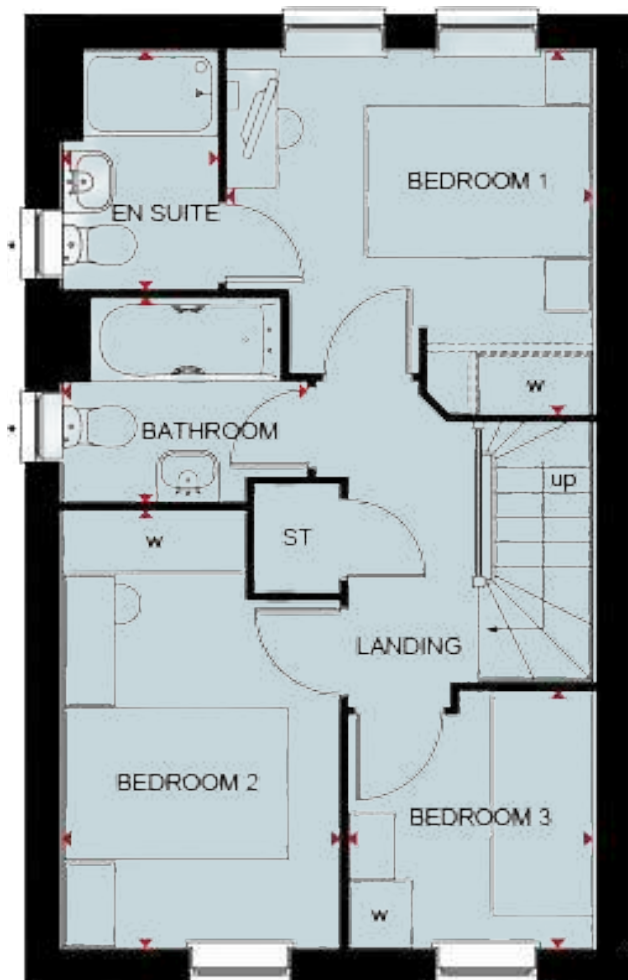
THE ARCHFORD

3 BEDROOM HOME



Ground Floor

| | | |
|----------------|----------------|----------------|
| Lounge | 4599 x 3746 mm | 15'1" x 12'3" |
| Kitchen/Dining | 4745 x 3310 mm | 15'6" x 10'10" |
| WC | 1561 x 1054 mm | 5'1" x 3'5" |



First Floor

| | | |
|-----------|----------------|---------------|
| Bedroom 1 | 3277 x 3229 mm | 10'9" x 10'7" |
| En suite | 2119 x 1385 mm | 6'11" x 4'6" |
| Bedroom 2 | 3886 x 2475 mm | 12'8" x 8'1" |
| Bedroom 3 | 2281 x 2186 mm | 7'5" x 7'2" |
| Bathroom | 2181 x 1815 mm | 7'2" x 5'11" |

Key

| | | | | | | | |
|----|--------|----|-----------------------|-----|----------------------|----|--------------------|
| B | Boiler | wm | Washing machine space | f/f | Fridge freezer space | W | Wardrobe space |
| ST | Store | dw | Dishwasher space | td | Tumble Dryer space | ◀▶ | Dimension location |

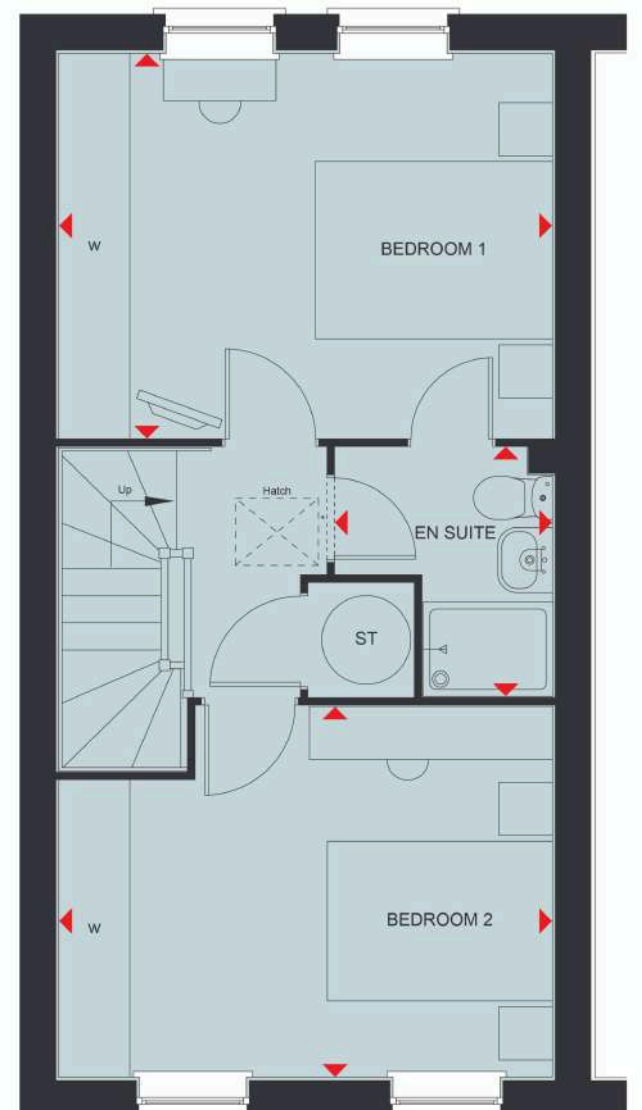
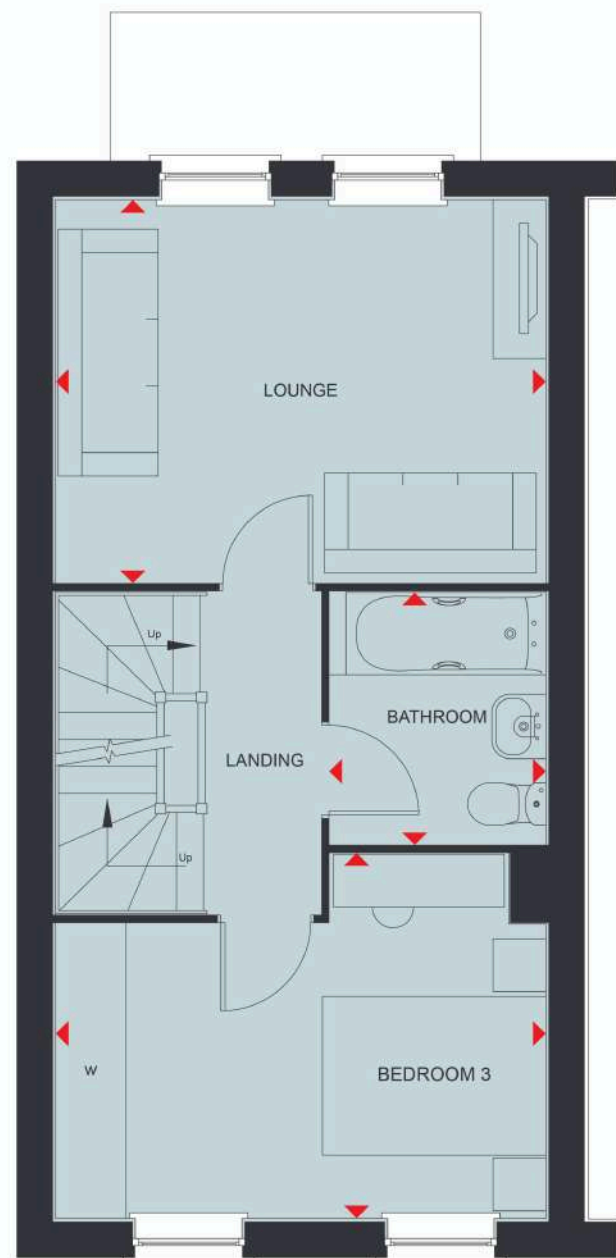
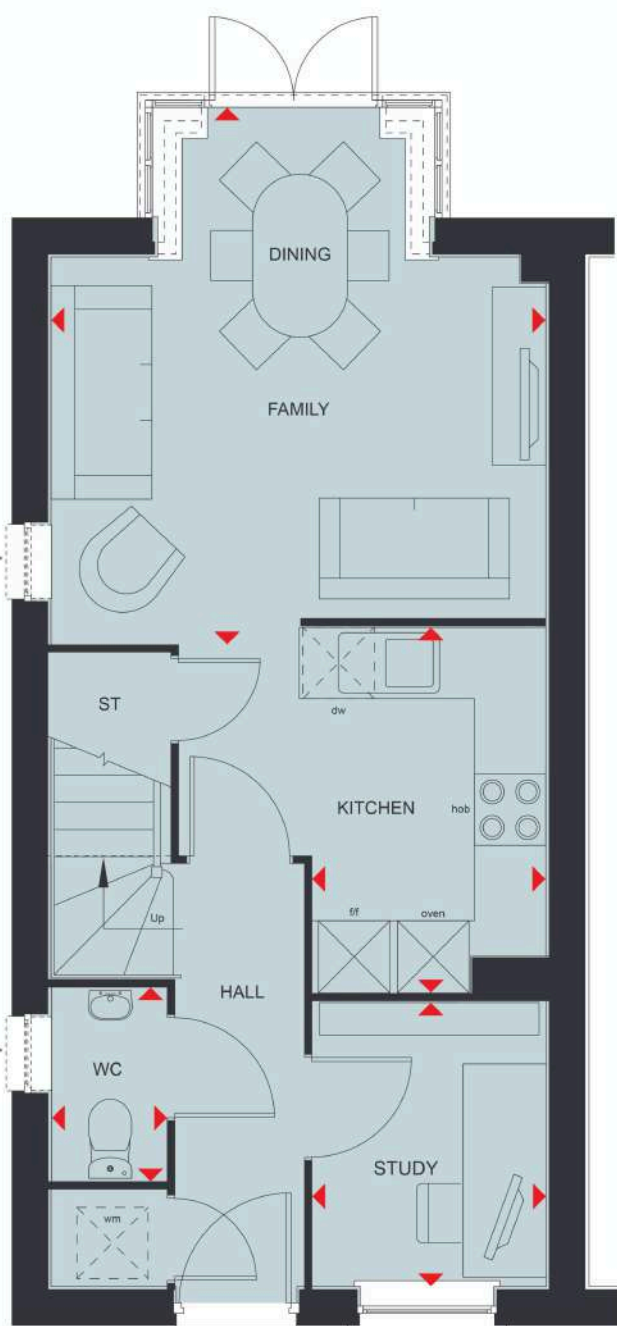
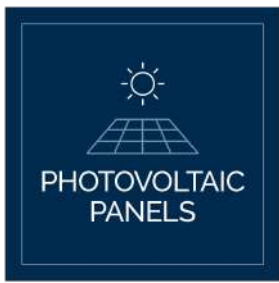
We are on the New Homes Quality Code register of registered developers. "We" refers to the Barratt Developments PLC group brands including Barratt London, Barratt Homes and David Wilson Homes. All images used are for illustrative purposes. These and the dimensions given are illustrative for this house type and individual properties may differ. Please check with your Sales Adviser in respect of individual properties. We give maximum dimensions within each room which includes areas of fixtures and fittings including fitted furniture. These dimensions should not be used for carpet or flooring sizes, appliance spaces or items of furniture. All images, photographs, dimensions and energy efficiency features depicted are not intended to be relied upon for, nor to form part of, any contract unless specifically incorporated in writing into the contract. Plots may include Solar PV Panels, please speak to Sales Adviser for further details.



DAVID WILSON HOMES

THE CANNINGTON

3 BEDROOM HOME



Ground Floor

| | | |
|---------------|----------------|----------------|
| Family/Dining | 4513 x 4162 mm | 14'10" x 13'8" |
| Kitchen | 3076 x 3070 mm | 10'1" x 10'1" |
| Study | 2394 x 1959 mm | 7'10" x 6'5" |
| WC | 1614 x 961 mm | 5'4" x 3'2" |

First Floor

| | | |
|-----------|----------------|---------------|
| Lounge | 4168 x 3249 mm | 13'8" x 10'8" |
| Bedroom 3 | 4168 x 3104 mm | 13'8" x 10'2" |
| Bathroom | 2139 x 1831 mm | 7'0" x 6'0" |

Second Floor

| | | |
|-----------|----------------|---------------|
| Bedroom 1 | 4168 x 3249 mm | 13'8" x 10'8" |
| En suite | 2101 x 1828 mm | 6'11" x 6'0" |
| Bedroom 2 | 4168 x 3137 mm | 13'8" x 10'4" |

*Window to WC included where plotting conditions allow
*Optional Door to En suite

Key

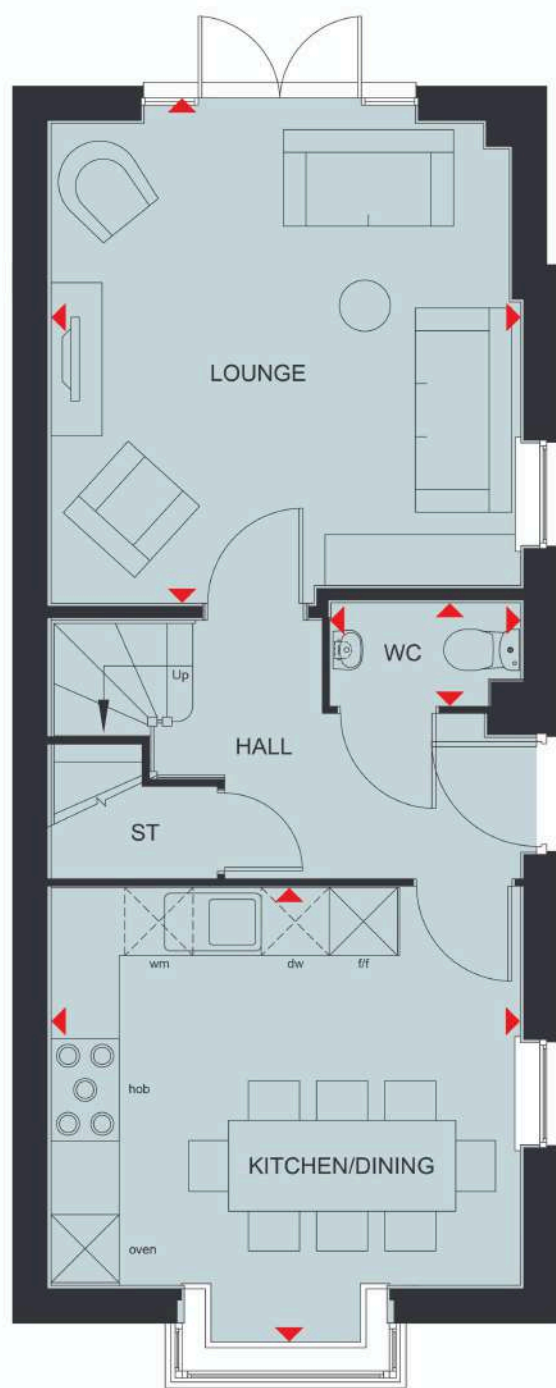
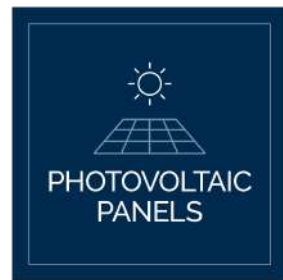
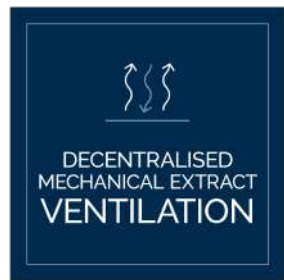
| | | | | | | | |
|----|--------|----|-----------------------|-----|----------------------|----|--------------------|
| B | Boiler | wm | Washing machine space | f/f | Fridge freezer space | W | Wardrobe space |
| ST | Store | dw | Dishwasher space | td | Tumble Dryer space | ◀▶ | Dimension location |

We are on the New Homes Quality Code register of registered developers. "We" refers to the Barratt Developments PLC group brands including Barratt London, Barratt Homes and David Wilson Homes. All images used are for illustrative purposes. These and the dimensions given are illustrative for this house type and individual properties may differ. Please check with your Sales Adviser in respect of individual properties. We give maximum dimensions within each room which includes areas of fixtures and fittings including fitted furniture. These dimensions should not be used for carpet or flooring sizes, appliance spaces or items of furniture. All images, photographs, dimensions and energy efficiency features depicted are not intended to be relied upon for, nor to form part of, any contract unless specifically incorporated in writing into the contract. Plots may include Solar PV Panels, please speak to Sales Adviser for further details.



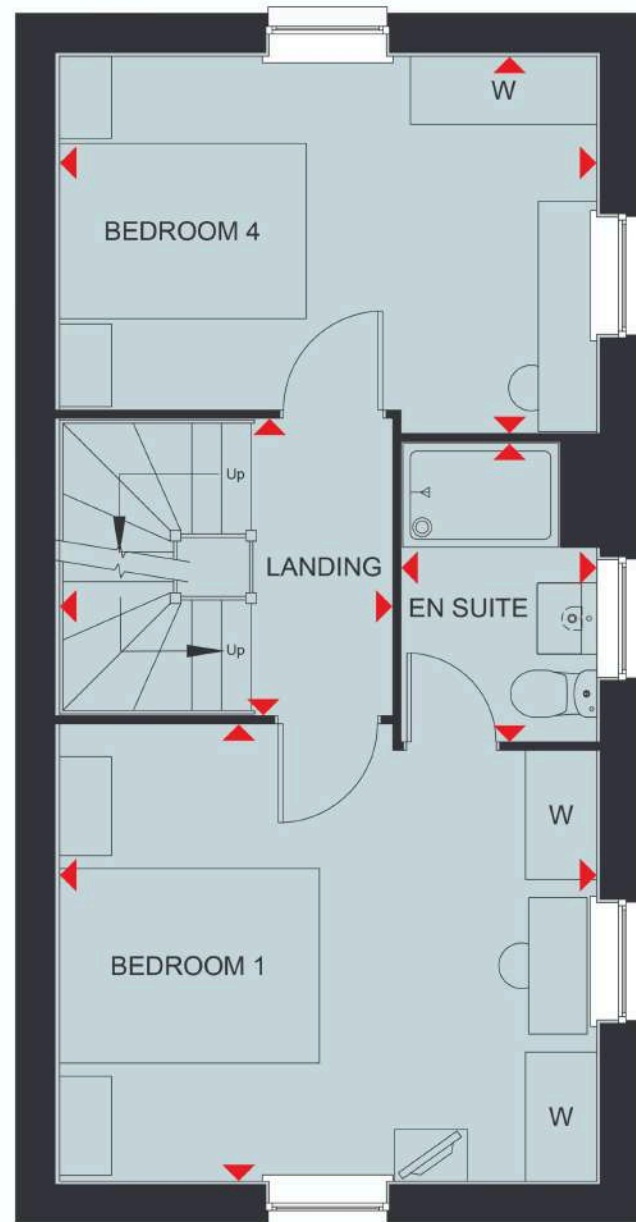
DAVID WILSON HOMES

THE PARKIN 4 BEDROOM HOME



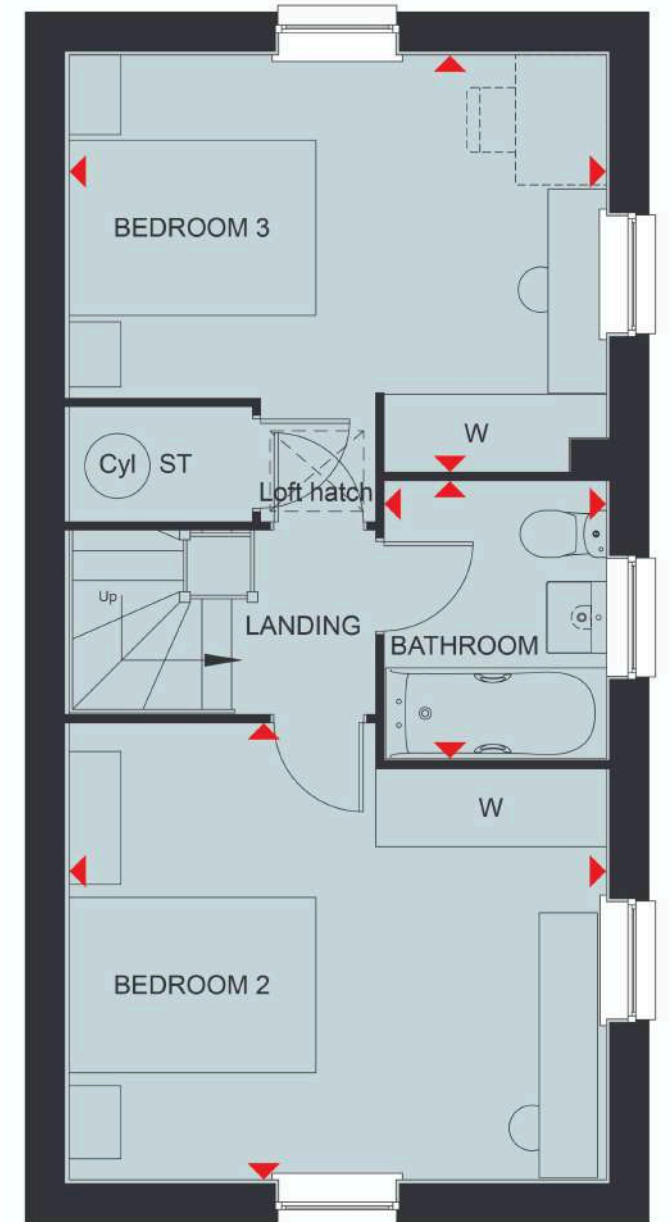
Ground Floor

| | | |
|----------------|----------------|----------------|
| Lounge | 4138 x 4227 mm | 13'7" x 13'10" |
| Kitchen/Dining | 4133 x 4028 mm | 13'7" x 13'3" |
| WC | 1673 x 896 mm | 5'6" x 2'11" |



First Floor

| | | |
|-----------|----------------|---------------|
| Bedroom 1 | 4138 x 3508 mm | 13'7" x 11'6" |
| En suite | 1448 x 2290 mm | 4'9" x 7'6" |
| Bedroom 4 | 4138 x 2893 mm | 13'7" x 9'6" |



Second Floor

| | | |
|-----------|----------------|---------------|
| Bedroom 2 | 4138 x 3508 mm | 13'7" x 11'6" |
| Bedroom 3 | 4138 x 3202 mm | 13'7" x 10'6" |
| Bathroom | 1695 x 2131 mm | 5'7" x 7'0" |

Key

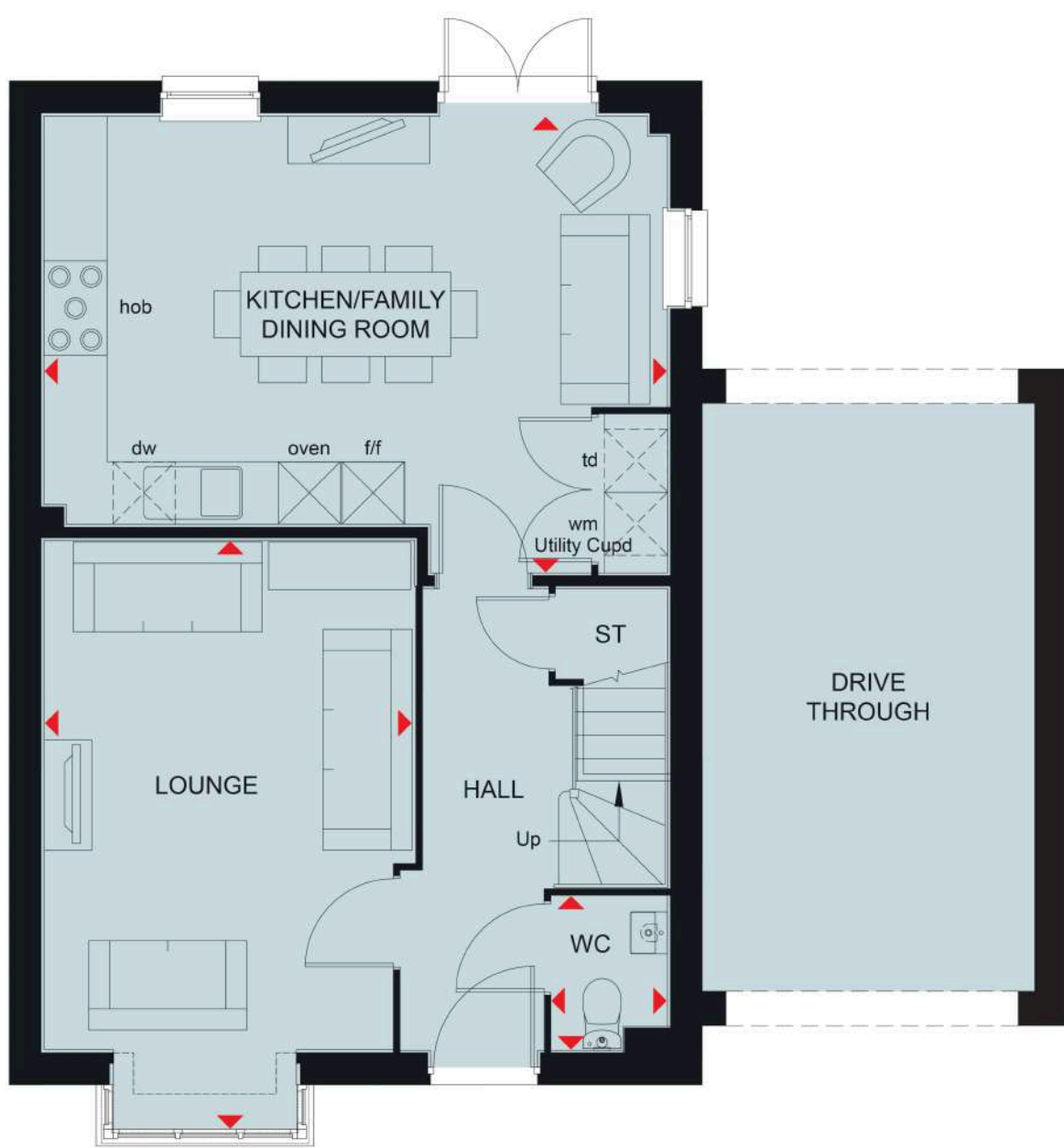
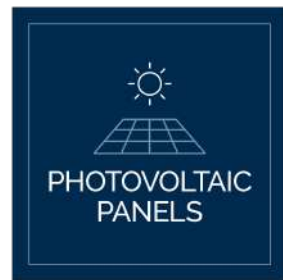
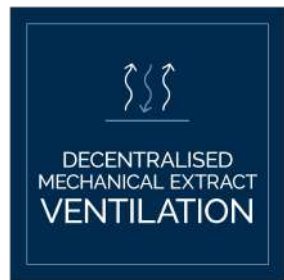
| | | | | | | | |
|----|--------|----|-----------------------|-----|----------------------|----|--------------------|
| B | Boiler | wm | Washing machine space | f/f | Fridge freezer space | W | Wardrobe space |
| ST | Store | dw | Dishwasher space | td | Tumble Dryer space | ◀▶ | Dimension location |

We are on the New Homes Quality Code register of registered developers. "We" refers to the Barratt Developments PLC group brands including Barratt London, Barratt Homes and David Wilson Homes. All images used are for illustrative purposes. These and the dimensions given are illustrative for this house type and individual properties may differ. Please check with your Sales Adviser in respect of individual properties. We give maximum dimensions within each room which includes areas of fixtures and fittings including fitted furniture. These dimensions should not be used for carpet or flooring sizes, appliance spaces or items of furniture. All images, photographs, dimensions and energy efficiency features depicted are not intended to be relied upon for, nor to form part of, any contract unless specifically incorporated in writing into the contract. Plots may include Solar PV Panels, please speak to Sales Adviser for further details.



DAVID WILSON HOMES

THE HURST 4 BEDROOM HOME



Ground Floor

| | | |
|-----------------------|----------------|---------------|
| Lounge | 3520 x 5242 mm | 11'7" x 17'2" |
| Kitchen/Family/Dining | 5929 x 4350 mm | 19'6" x 14'3" |
| WC | 1461 x 1108 mm | 4'9" x 3'8" |



First Floor

| | | |
|-----------|----------------|----------------|
| Bedroom 1 | 4850 x 4370 mm | 15'11" x 14'4" |
| En suite | 1461 x 2218 mm | 4'9" x 7'3" |
| Bedroom 2 | 5582 x 3115 mm | 18'4" x 10'2" |
| Bedroom 3 | 3120 x 3000 mm | 10'3" x 9'10" |
| Bedroom 4 | 3120 x 2845 mm | 10'3" x 9'4" |
| Bathroom | 2181 x 1924 mm | 7'2" x 6'4" |

Key

| | | | |
|----------|--------------------------|--------------------------|-----------------------|
| B Boiler | wm Washing machine space | f/f Fridge freezer space | W Wardrobe space |
| ST Store | dw Dishwasher space | td Tumble Dryer space | ◀▶ Dimension location |

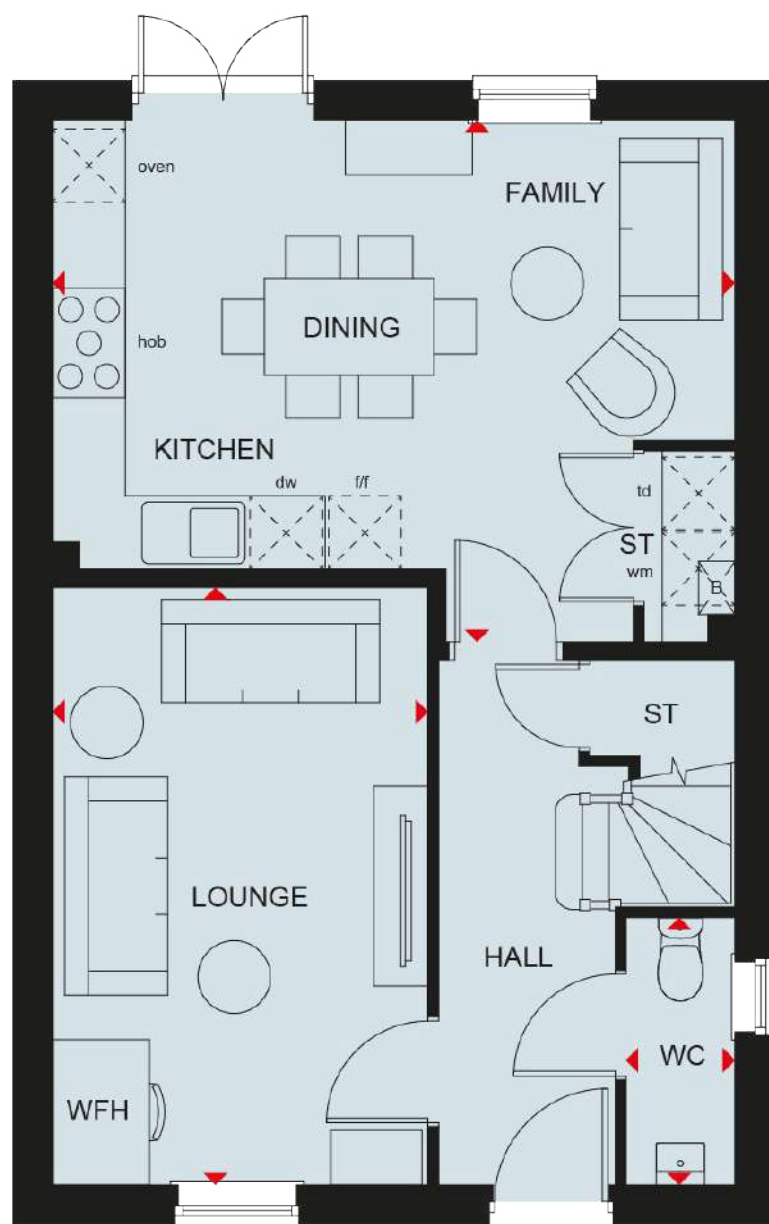
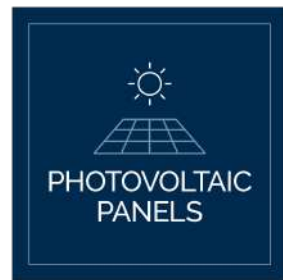
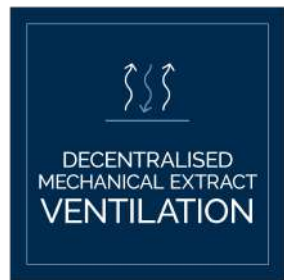
We are on the New Homes Quality Code register of registered developers. "We" refers to the Barratt Developments PLC group brands including Barratt London, Barratt Homes and David Wilson Homes. All images used are for illustrative purposes. These and the dimensions given are illustrative for this house type and individual properties may differ. Please check with your Sales Adviser in respect of individual properties. We give maximum dimensions within each room which includes areas of fixtures and fittings including fitted furniture. These dimensions should not be used for carpet or flooring sizes, appliance spaces or items of furniture. All images, photographs, dimensions and energy efficiency features depicted are not intended to be relied upon for, nor to form part of, any contract unless specifically incorporated in writing into the contract. Plots may include Solar PV Panels, please speak to Sales Adviser for further details.



DAVID WILSON HOMES

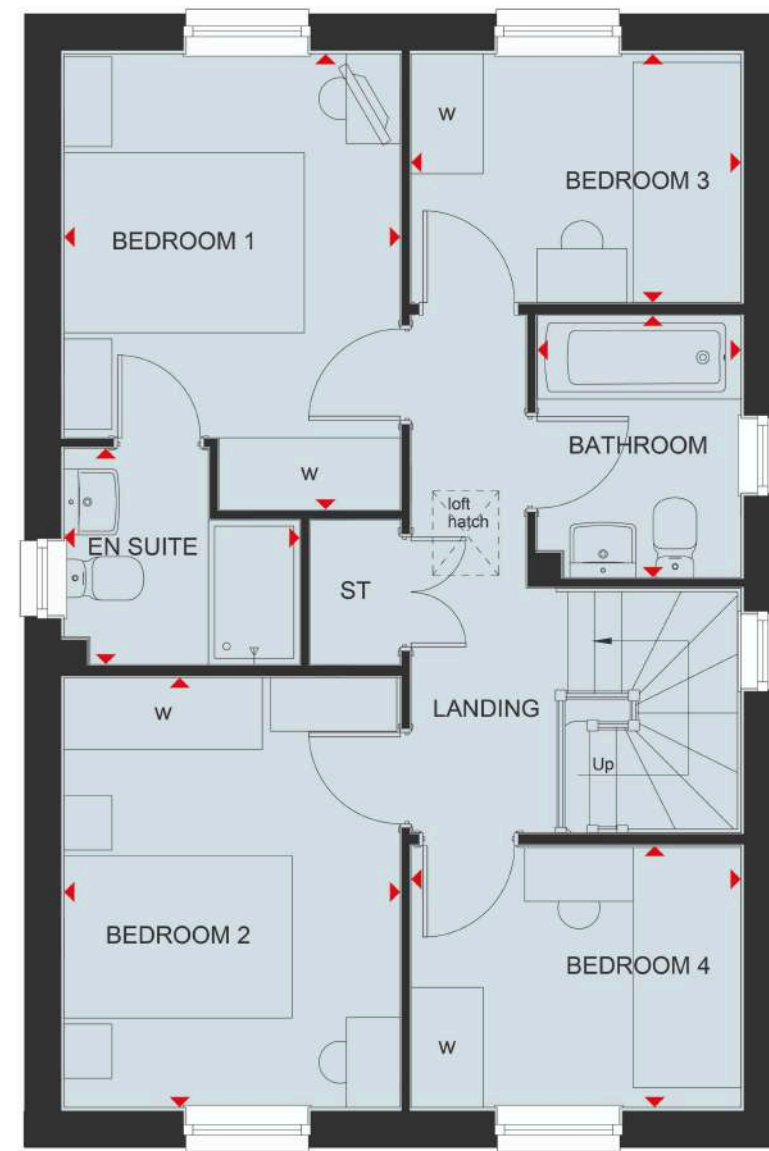
THE INGLEBY

4 BEDROOM HOME



Ground Floor

| | | |
|-----------------------|----------------|---------------|
| Lounge | 4925 x 3095 mm | 16'1" x 10'1" |
| Kitchen/Family/Dining | 5365 x 4295 mm | 17'7" x 14'1" |
| WC | 2206 x 900 mm | 7'2" x 2'11" |



First Floor

| | | |
|-----------|----------------|--------------|
| Bedroom 1 | 3797 x 2800 mm | 12'5" x 9'2" |
| En suite | 1962 x 1800 mm | 6'5" x 5'10" |
| Bedroom 2 | 3587 x 2800 mm | 11'9" x 9'2" |
| Bedroom 3 | 2747 x 2073 mm | 9'0" x 6'9" |
| Bedroom 4 | 2747 x 2181 mm | 9'0" x 7'1" |
| Bathroom | 2179 x 1700 mm | 7'1" x 5'6" |

Key

| | | | |
|----------|--------------------------|--------------------------|-----------------------|
| B Boiler | wm Washing machine space | f/f Fridge freezer space | W Wardrobe space |
| ST Store | dw Dishwasher space | td Tumble Dryer space | ◀▶ Dimension location |

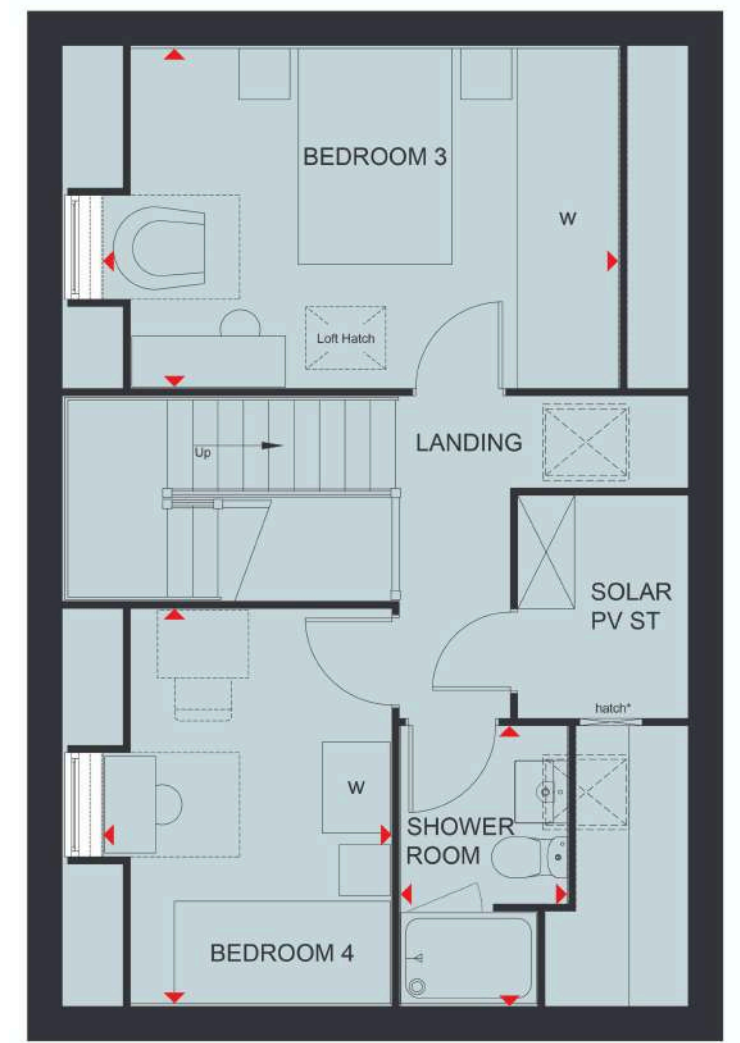
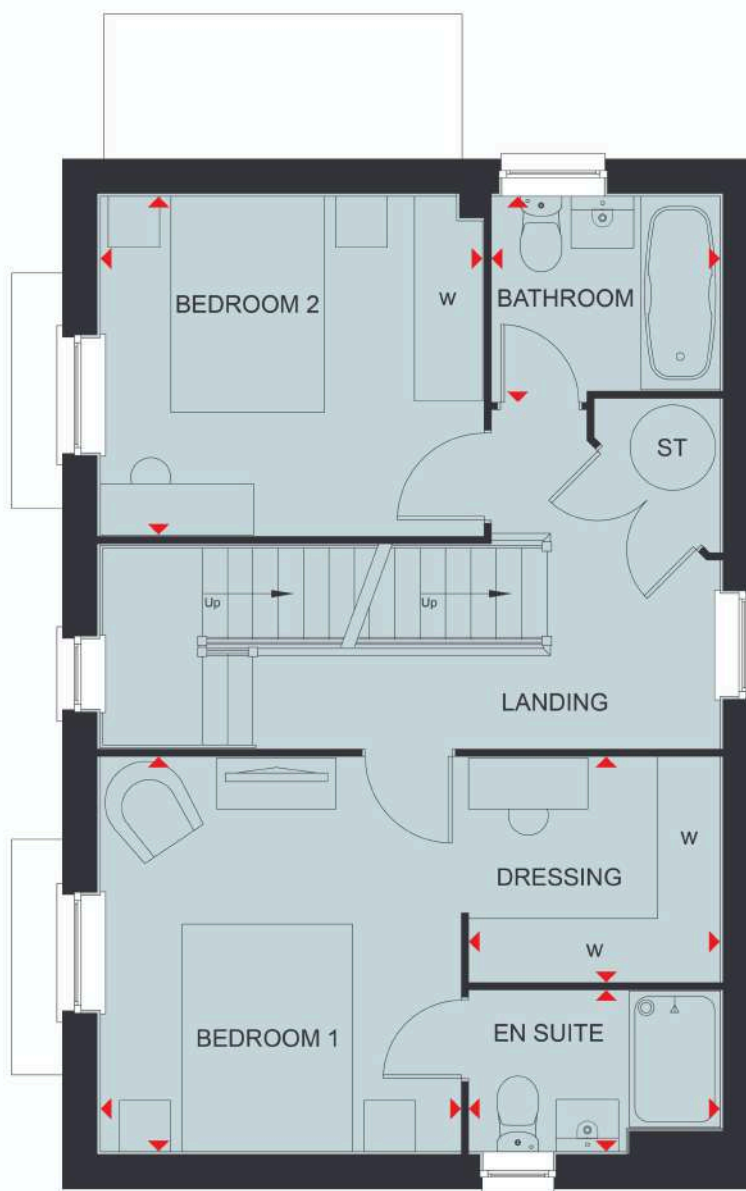
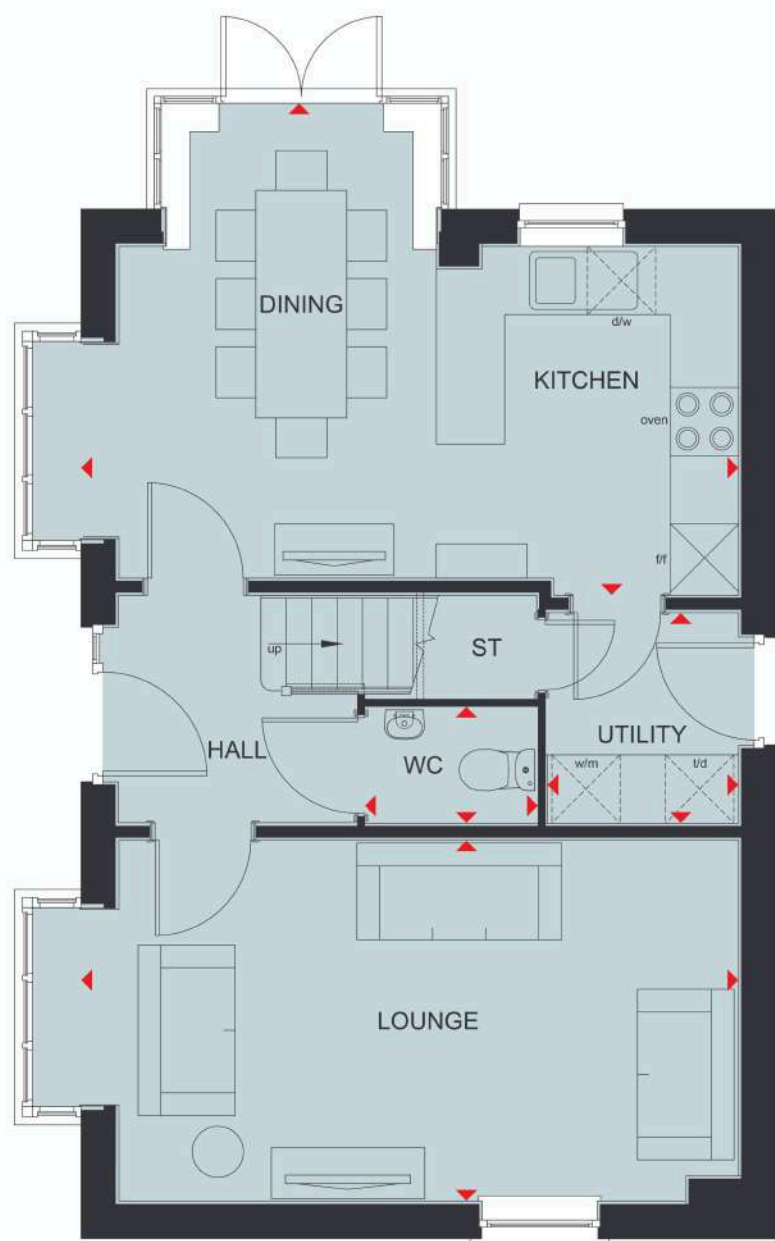
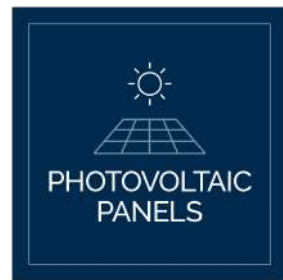
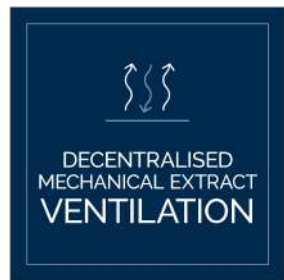
We are on the New Homes Quality Code register of registered developers. "We" refers to the Barratt Developments PLC group brands including Barratt London, Barratt Homes and David Wilson Homes. All images used are for illustrative purposes. These and the dimensions given are illustrative for this house type and individual properties may differ. Please check with your Sales Adviser in respect of individual properties. We give maximum dimensions within each room which includes areas of fixtures and fittings including fitted furniture. These dimensions should not be used for carpet or flooring sizes, appliance spaces or items of furniture. All images, photographs, dimensions and energy efficiency features depicted are not intended to be relied upon for, nor to form part of, any contract unless specifically incorporated in writing into the contract. Plots may include Solar PV Panels, please speak to Sales Adviser for further details.



DAVID WILSON HOMES

THE HERTFORD

4 BEDROOM HOME



Ground Floor

| | | |
|----------------|----------------|---------------|
| Lounge | 5847 x 3173 mm | 19'2" x 10'5" |
| Kitchen/Dining | 5847 x 4327 mm | 19'2" x 14'2" |
| Utility | 1850 x 1687 mm | 6'1" x 5'6" |
| WC | 1500 x 1014 mm | 4'11" x 3'4" |

First Floor

| | | |
|-----------|----------------|---------------|
| Bedroom 1 | 3463 x 3162 mm | 11'4" x 10'4" |
| En suite | 2201 x 1411 mm | 7'3" x 4'8" |
| Dressing | 2201 x 1964 mm | 7'3" x 6'5" |
| Bedroom 2 | 3362 x 2979 mm | 11'0" x 9'9" |
| Bathroom | 2000 x 1801 mm | 6'7" x 5'11" |

Second Floor

| | | |
|-------------|-----------------|----------------|
| Bedroom 3 | 4534* x 2979 mm | 14'11"* x 9'9" |
| Bedroom 4 | 3463 x 2529* mm | 11'4" x 8'4"* |
| Shower room | 2433 x 1464* mm | 8'0" x 4'10"* |

*Overall floor dimension includes lowered ceiling areas

Key

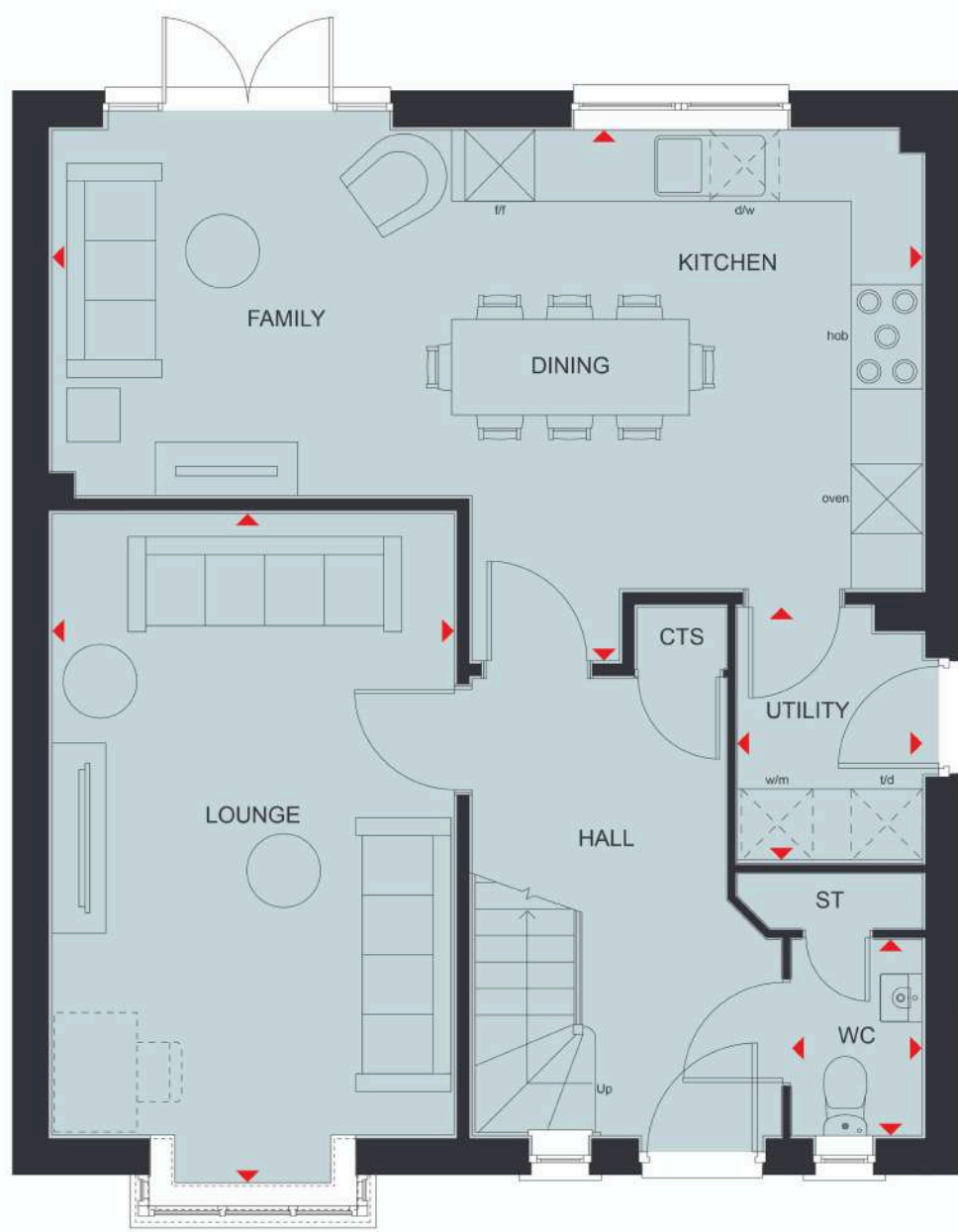
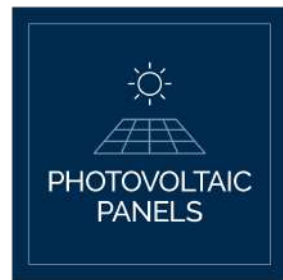
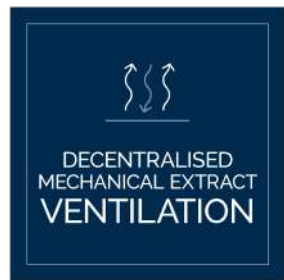
| | | | | | | | |
|----|--------|----|-----------------------|-----|----------------------|----|--------------------|
| B | Boiler | wm | Washing machine space | f/f | Fridge freezer space | W | Wardrobe space |
| ST | Store | dw | Dishwasher space | td | Tumble Dryer space | ◀▶ | Dimension location |

We are on the New Homes Quality Code register of registered developers. "We" refers to the Barratt Developments PLC group brands including Barratt London, Barratt Homes and David Wilson Homes. All images used are for illustrative purposes. These and the dimensions given are illustrative for this house type and individual properties may differ. Please check with your Sales Adviser in respect of individual properties. We give maximum dimensions within each room which includes areas of fixtures and fittings including fitted furniture. These dimensions should not be used for carpet or flooring sizes, appliance spaces or items of furniture. All images, photographs, dimensions and energy efficiency features depicted are not intended to be relied upon for, nor to form part of, any contract unless specifically incorporated in writing into the contract. Plots may include Solar PV Panels, please speak to Sales Adviser for further details.



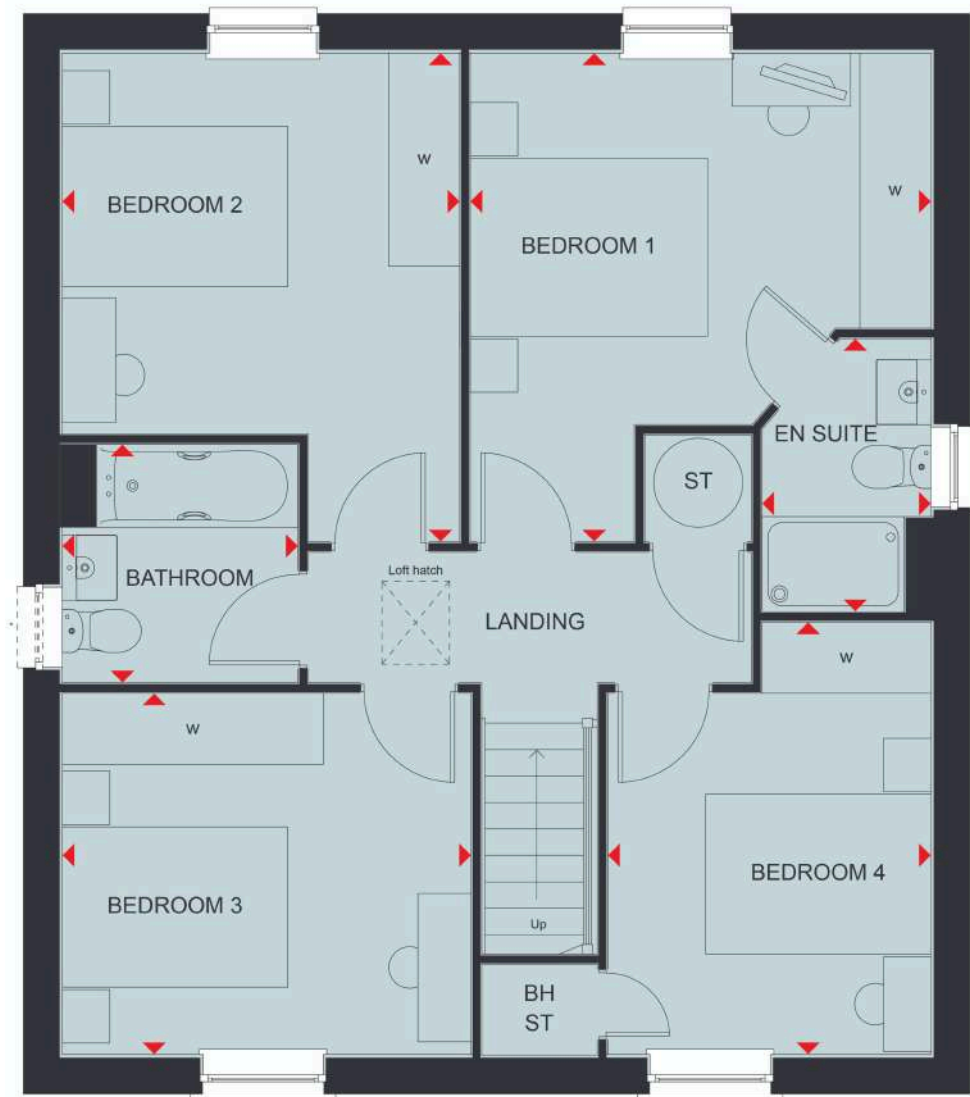
DAVID WILSON HOMES

THE KIRKDALE 4 BEDROOM HOME



Ground Floor

| | | |
|-----------------------|----------------|---------------|
| Lounge | 3380 x 5617 mm | 11'1" x 18'5" |
| Kitchen/Family/Dining | 7318 x 4460 mm | 24'0" x 14'8" |
| Utility | 1561 x 2150 mm | 5'1" x 7'1" |
| WC | 1095 x 1650 mm | 3'7" x 5'5" |



First Floor

| | | |
|-----------|----------------|---------------|
| Bedroom 1 | 3885 x 4119 mm | 12'9" x 13'6" |
| En suite | 1425 x 2300 mm | 4'8" x 7'7" |
| Bedroom 2 | 3350 x 4119 mm | 11'0" x 13'6" |
| Bedroom 3 | 3447 x 3043 mm | 11'4" x 10'0" |
| Bedroom 4 | 2725 x 3643 mm | 8'11" x 12'0" |
| Bathroom | 1987 x 2010 mm | 6'6" x 6'7" |

Key

| | | | |
|----------|--------------------------|--------------------------|-----------------------|
| B Boiler | wm Washing machine space | f/f Fridge freezer space | W Wardrobe space |
| ST Store | dw Dishwasher space | td Tumble Dryer space | ◀▶ Dimension location |

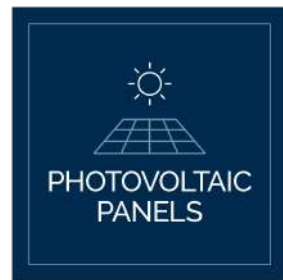
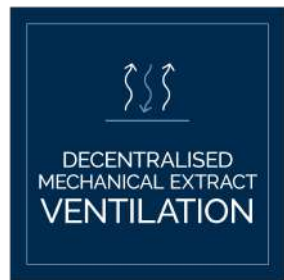
We are on the New Homes Quality Code register of registered developers. "We" refers to the Barratt Developments PLC group brands including Barratt London, Barratt Homes and David Wilson Homes. All images used are for illustrative purposes. These and the dimensions given are illustrative for this house type and individual properties may differ. Please check with your Sales Adviser in respect of individual properties. We give maximum dimensions within each room which includes areas of fixtures and fittings including fitted furniture. These dimensions should not be used for carpet or flooring sizes, appliance spaces or items of furniture. All images, photographs, dimensions and energy efficiency features depicted are not intended to be relied upon for, nor to form part of, any contract unless specifically incorporated in writing into the contract. Plots may include Solar PV Panels, please speak to Sales Adviser for further details.



DAVID WILSON HOMES

THE PEREGRINE

4 BEDROOM HOME



Ground Floor

| | | |
|-----------------------|----------------|----------------|
| Lounge | 4803 x 3615 mm | 15'9" x 11'10" |
| Kitchen/B'fast/Dining | 6956 x 4438 mm | 22'10" x 14'6" |
| Utility | 2164 x 1907 mm | 7'1" x 6'3" |
| Study | 2885 x 2615 mm | 9'5" x 8'7" |
| WC | 1859 x 1512 mm | 6'1" x 4'11" |



First Floor

| | | |
|-----------|----------------|----------------|
| Bedroom 1 | 5543 x 3605 mm | 18'2" x 11'10" |
| En suite | 2177 x 1435 mm | 7'2" x 4'8" |
| Bedroom 2 | 5120 x 2700 mm | 16'9" x 8'10" |
| Bedroom 3 | 3416 x 2800 mm | 11'2" x 9'2" |
| Bedroom 4 | 3904 x 2677 mm | 12'9" x 8'9" |
| Bathroom | 2872 x 2160 mm | 9'5" x 7'1" |

Key

| | | | |
|----------|--------------------------|--------------------------|-----------------------|
| B Boiler | wm Washing machine space | f/f Fridge freezer space | W Wardrobe space |
| ST Store | dw Dishwasher space | td Tumble Dryer space | ◀▶ Dimension location |

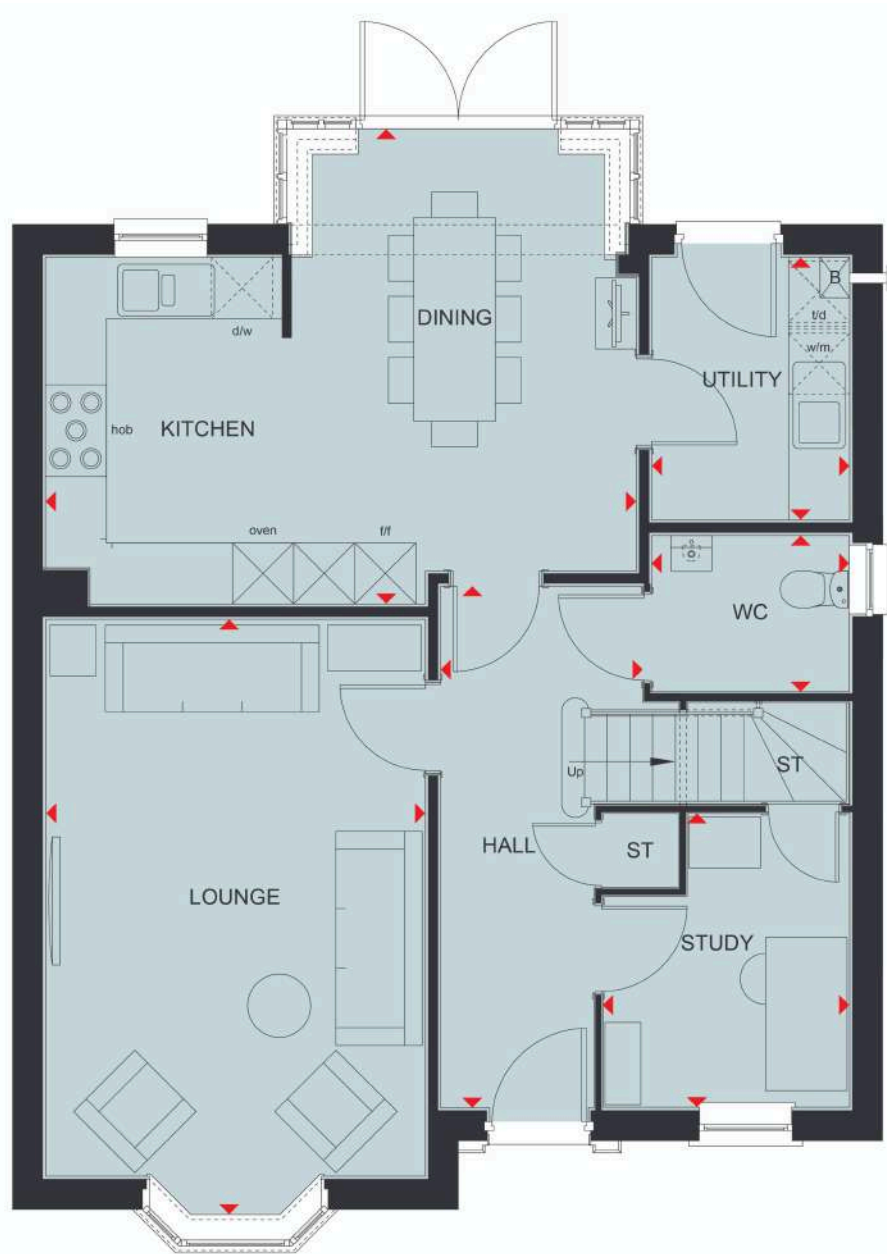
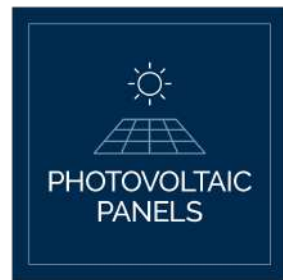
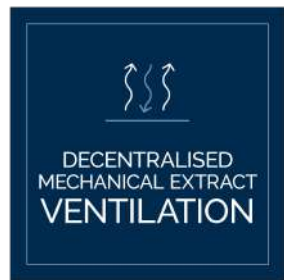
We are on the New Homes Quality Code register of registered developers. "We" refers to the Barratt Developments PLC group brands including Barratt London, Barratt Homes and David Wilson Homes. All images used are for illustrative purposes. These and the dimensions given are illustrative for this house type and individual properties may differ. Please check with your Sales Adviser in respect of individual properties. We give maximum dimensions within each room which includes areas of fixtures and fittings including fitted furniture. These dimensions should not be used for carpet or flooring sizes, appliance spaces or items of furniture. All images, photographs, dimensions and energy efficiency features depicted are not intended to be relied upon for, nor to form part of, any contract unless specifically incorporated in writing into the contract. Plots may include Solar PV Panels, please speak to Sales Adviser for further details.



DAVID WILSON HOMES

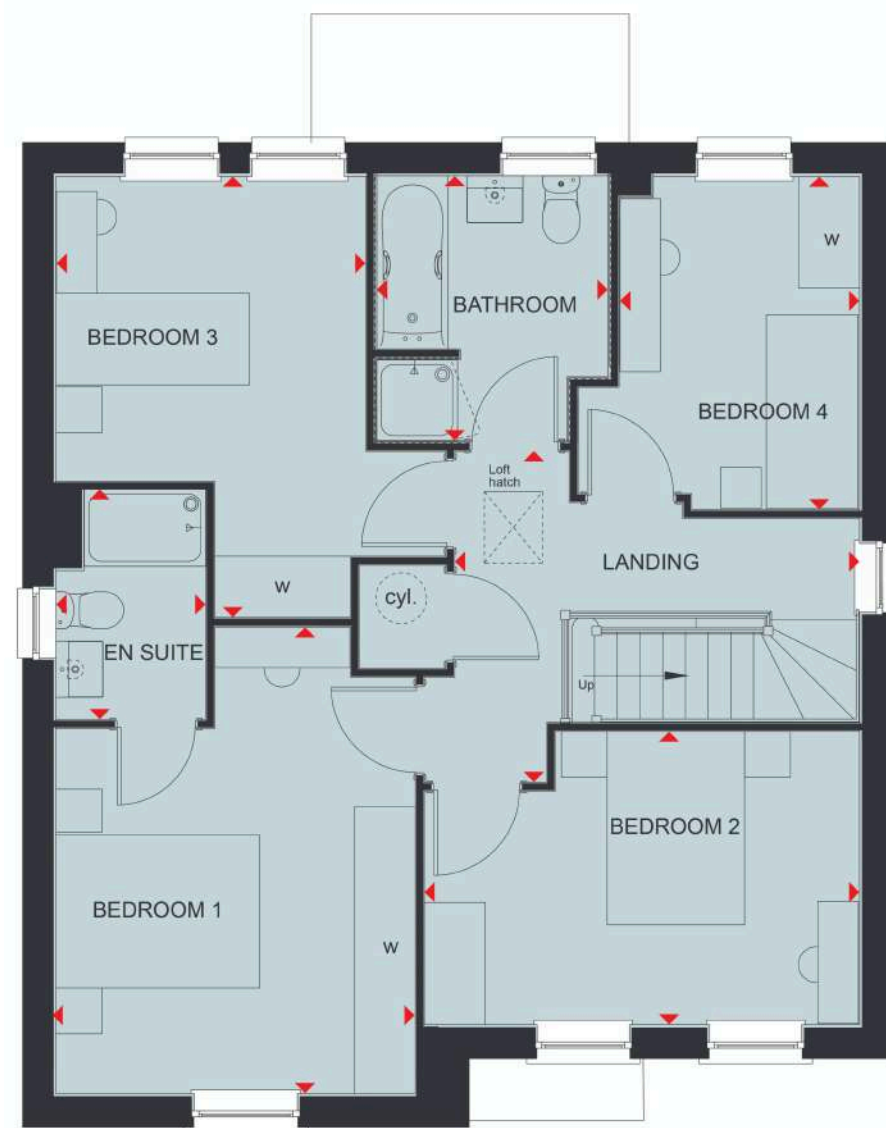
THE SKYLARK

4 BEDROOM HOME



Ground Floor

| | | |
|----------------|----------------|-------------------|
| Lounge | 6213 x 3723 mm | 20'4 1/2" x 12'3" |
| Kitchen/Dining | 5857 x 4628 mm | 19'2" x 15'2" |
| Study | 2861 x 2421 mm | 9'4" x 7'11" |
| Utility | 2575 x 1940 mm | 8'5" x 6'4" |
| WC | 1878 x 1535 mm | 6'2" x 5'0" |



First Floor

| | | |
|-----------|----------------|---------------|
| Bedroom 1 | 4586 x 3523 mm | 15'0" x 11'6" |
| En suite | 2250 x 1406 mm | 7'4" x 4'7" |
| Bedroom 2 | 4336 x 3036 mm | 14'2" x 9'11" |
| Bedroom 3 | 4275 x 2861 mm | 14'0" x 9'4" |
| Bedroom 4 | 3278 x 2363 mm | 10'9" x 7'9" |
| Bathroom | 2599 x 2275 mm | 8'6" x 7'5" |

Key

| | | | |
|----------|--------------------------|--------------------------|-----------------------|
| B Boiler | wm Washing machine space | f/f Fridge freezer space | W Wardrobe space |
| ST Store | dw Dishwasher space | td Tumble Dryer space | ◀▶ Dimension location |

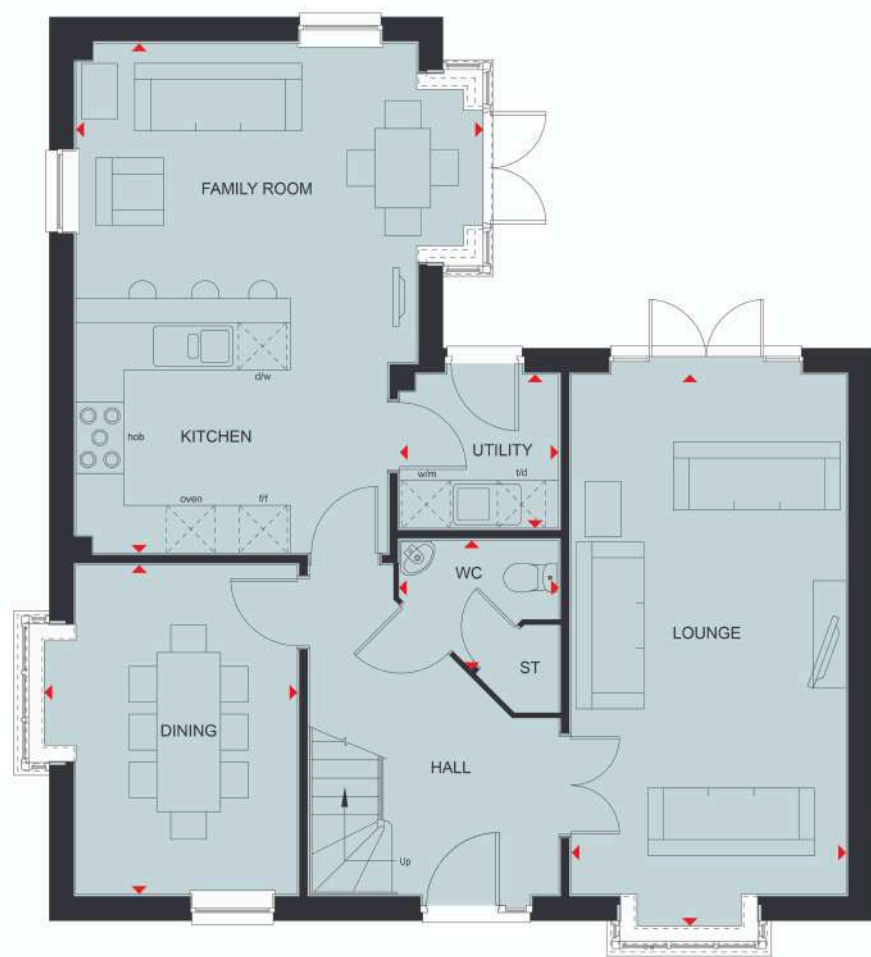
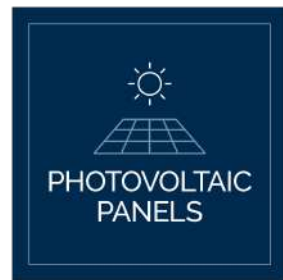
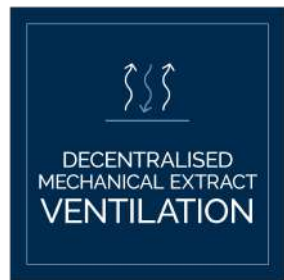
We are on the New Homes Quality Code register of registered developers. "We" refers to the Barratt Developments PLC group brands including Barratt London, Barratt Homes and David Wilson Homes. All images used are for illustrative purposes. These and the dimensions given are illustrative for this house type and individual properties may differ. Please check with your Sales Adviser in respect of individual properties. We give maximum dimensions within each room which includes areas of fixtures and fittings including fitted furniture. These dimensions should not be used for carpet or flooring sizes, appliance spaces or items of furniture. All images, photographs, dimensions and energy efficiency features depicted are not intended to be relied upon for, nor to form part of, any contract unless specifically incorporated in writing into the contract. Plots may include Solar PV Panels, please speak to Sales Adviser for further details.



DAVID WILSON HOMES

THE MORETON

5 BEDROOM HOME



Ground Floor

| | | |
|----------------|----------------|----------------|
| Lounge | 6932 x 3507 mm | 22'9" x 11'6" |
| Kitchen/Family | 6406 x 5120 mm | 21'0" x 16'10" |
| Dining | 4144 x 2780 mm | 13'7" x 9'2" |
| Utility | 1948 x 1935 mm | 6'5" x 6'4" |
| WC | 1953 x 1617 mm | 6'5" x 5'4" |



First Floor

| | | |
|------------|----------------|---------------|
| Bedroom 1 | 6441 x 4280 mm | 21'1" x 14'1" |
| En suite 1 | 2526 x 2225 mm | 8'3" x 7'3" |
| Bedroom 3 | 4777 x 2852 mm | 9'4" x 13'0" |
| Bedroom 4 | 3754 x 2700 mm | 12'4" x 8'11" |
| Bedroom 5 | 3741 x 2799 mm | 12'3" x 9'2" |
| Bathroom | 2682 x 2125 mm | 8'9" x 6'11" |



Second Floor

| | | |
|------------|-----------------|------------------|
| Bedroom 2 | 5858* x 5438 mm | 19'2" * x 17'10" |
| Den | 6616 x 2941* mm | 21'8" x 9'8" * |
| En suite 2 | 2291 x 1438* mm | 7'6" x 4'8" * |

*Overall floor dimension includes lowered ceiling areas

Key

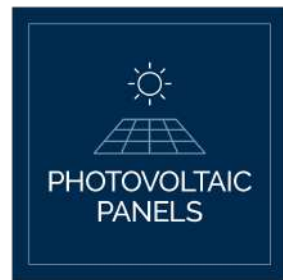
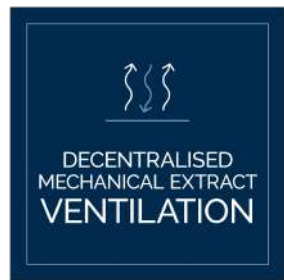
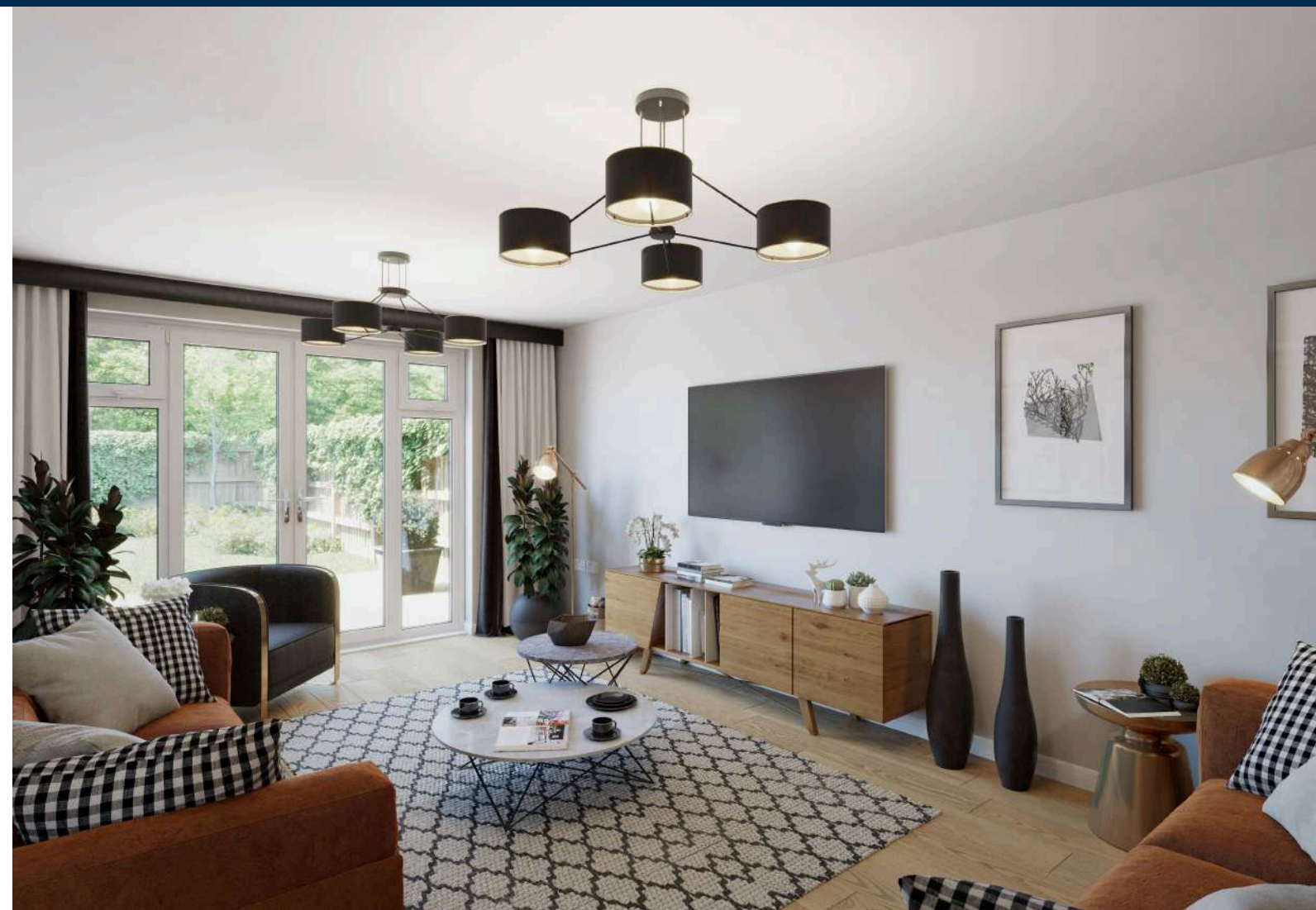
| | | | |
|----------|--------------------------|--------------------------|-----------------------|
| B Boiler | wm Washing machine space | f/f Fridge freezer space | W Wardrobe space |
| ST Store | dw Dishwasher space | td Tumble Dryer space | ◀▶ Dimension location |

We are on the New Homes Quality Code register of registered developers. "We" refers to the Barratt Developments PLC group brands including Barratt London, Barratt Homes and David Wilson Homes. All images used are for illustrative purposes. These and the dimensions given are illustrative for this house type and individual properties may differ. Please check with your Sales Adviser in respect of individual properties. We give maximum dimensions within each room which includes areas of fixtures and fittings including fitted furniture. These dimensions should not be used for carpet or flooring sizes, appliance spaces or items of furniture. All images, photographs, dimensions and energy efficiency features depicted are not intended to be relied upon for, nor to form part of, any contract unless specifically incorporated in writing into the contract. Plots may include Solar PV Panels, please speak to Sales Adviser for further details.



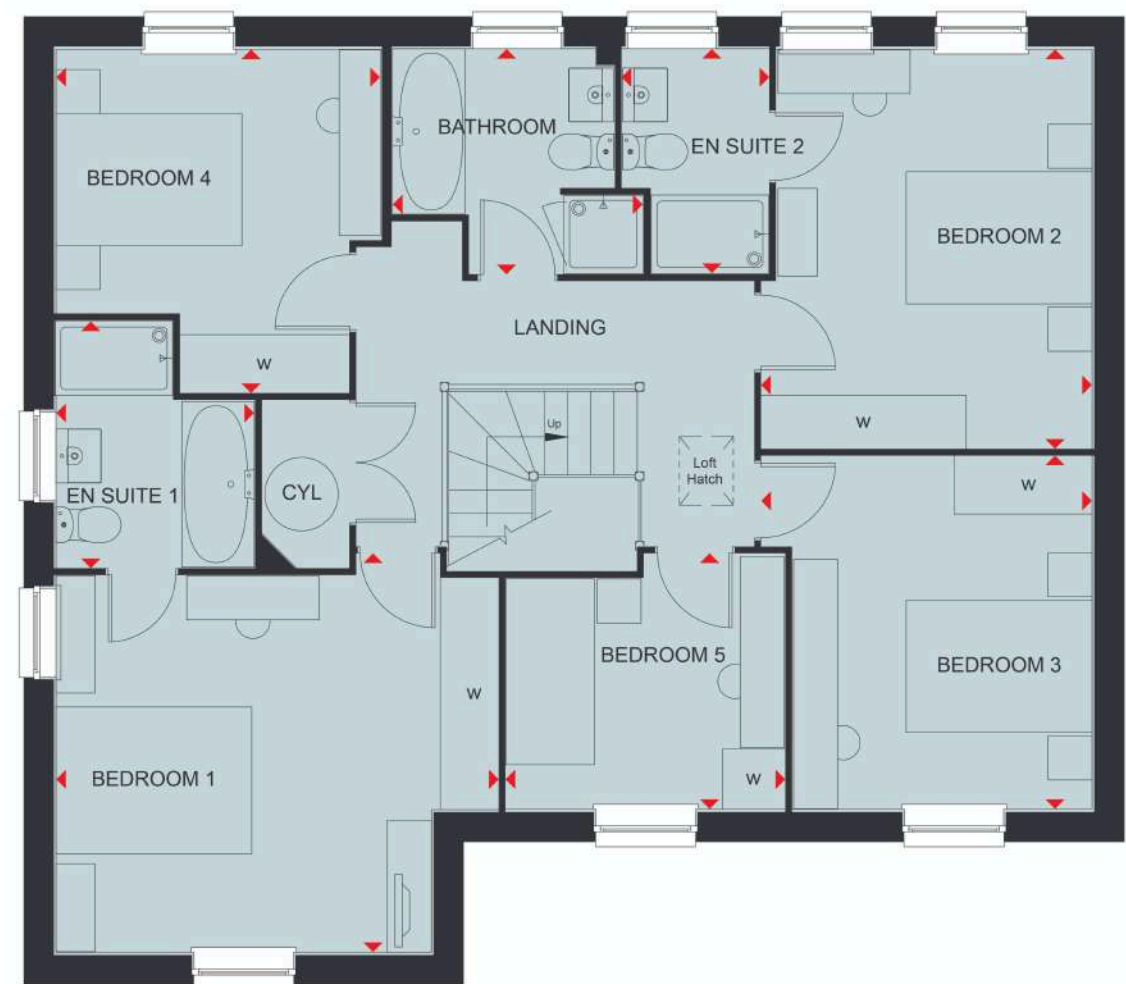
DAVID WILSON HOMES

THE MANNING 5 BEDROOM HOME



Ground Floor

| | | |
|--------------------|----------------|---------------|
| Lounge | 3545 x 5276 mm | 11'8" x 17'4" |
| Kitchen/Breakfast/ | | |
| Family | 7413 x 6883 mm | 24'4" x 22'7" |
| Dining | 3840 x 3388 mm | 12'7" x 11'1" |
| Study | 2408 x 3550 mm | 7'11" x 11'8" |
| Utility | 2325 x 1665 mm | 7'8" x 5'6" |
| WC | 1909 x 1165 mm | 6'3" x 3'10" |



First Floor

| | | |
|------------|----------------|----------------|
| Bedroom 1 | 4066 x 4515 mm | 13'4" x 14'10" |
| En suite 1 | 2027 x 2514 mm | 6'8" x 8'3" |
| Bedroom 2 | 3375 x 4072 mm | 11'1" x 13'5" |
| En suite 2 | 1489 x 2297 mm | 4'11" x 7'6" |
| Bedroom 3 | 3603 x 3375 mm | 11'10" x 11'1" |
| Bedroom 4 | 3312 x 3503 mm | 10'10" x 11'6" |
| Bedroom 5 | 2839 x 2604 mm | 9'4" x 8'7" |
| Bathroom | 2261 x 2296 mm | 7'5" x 7'6" |

KEY

| | | | | | | | |
|----|--------|----|-----------------------|-----|----------------------|----|--------------------|
| B | Boiler | wm | Washing machine space | f/f | Fridge freezer space | W | Wardrobe space |
| ST | Store | dw | Dishwasher space | td | Tumble Dryer space | ◀▶ | Dimension location |

We are on the New Homes Quality Code register of registered developers. "We" refers to the Barratt Developments PLC group brands including Barratt London, Barratt Homes and David Wilson Homes. All images used are for illustrative purposes. These and the dimensions given are illustrative for this house type and individual properties may differ. Please check with your Sales Adviser in respect of individual properties. We give maximum dimensions within each room which includes areas of fixtures and fittings including fitted furniture. These dimensions should not be used for carpet or flooring sizes, appliance spaces or items of furniture. All images, photographs, dimensions and energy efficiency features depicted are not intended to be relied upon for, nor to form part of, any contract unless specifically incorporated in writing into the contract. Plots may include Solar PV Panels, please speak to Sales Adviser for further details.



DAVID WILSON HOMES

NEW HOMES

Quality Code



Housebuilders and developers who build new homes will be expected to register with the [New Homes Quality Board](#) (NHQB). As long as a house-builder or developer has followed the correct registration process, including completing the necessary training, introducing a complaints procedure, and following other processes and procedures that are needed to meet the requirements of this New Homes Quality Code (the code), they will become a registered developer.

Registered developers agree to follow the code and the New Homes Ombudsman Service, including accepting the decisions of the New Homes Ombudsman in relation to dealings with customers. If a registered developer does not meet the required standards, or fails to accept and act in line with the decisions of the New Homes Ombudsman, they may have action taken against them, including being removed from the register of registered developers.

The code sets out the requirements that registered developers must meet. The code may be updated from time to time to reflect changes to industry best practice as well as the decisions of the New Homes Ombudsman Service.

All homes built by registered developers must meet building-safety and other regulations. All registered developers should aim to make sure there are no snags or defects in their properties before the keys are handed over to a customer. If there are any snags or defects, these should be put right within the agreed timescales.

What the code covers

For the purposes of this code, 'customer' means a person who is buying or intends to buy a new home which they will live in or give to another person. (If a new home is being bought in joint names, 'the customer' includes all the joint customers.) However, the

Homes Quality Board have also started work to consider other groups of customers and what they should be able to expect from a new home. This includes shared owners and people who are buying a new home to let to other people. Any changes the New Homes Quality Board make to the code to reflect the needs of other groups of customers will be developed through consultation, and they will continually assess and review the effectiveness of the code, and any new laws or regulations that apply. Other areas which are not covered by the code are claims for loss of property value or blight (where a property falls in value or becomes difficult to sell because of major public work in the area), personal injury or claims that are not covered by the scheme rules of the New Homes Ombudsman Service.



DAVID WILSON HOMES

WHERE QUALITY LIVES

dwh.co.uk or call **0330 057 2222**

DEV003017/ARP26