



BEAUCHAMP  
GATE

UCKFIELD

# EXPERIENCE

— THE DAVID WILSON DIFFERENCE —

At David Wilson Homes we have been building quality homes across the UK for over 40 years. Our reputation is founded on our commitment to provide traditional homes in desirable locations built to a superb specification.

We\*are delighted to have received over 90% homeowner recommendation since 2010. This Home Builders Federation accolade, recognises our commitment to bring you beautiful new homes.

Our collection of beautiful homes offer a range of spacious bedroom designs, located in highly desirable locations.

We would encourage you to come and experience the David Wilson Difference and we look forward to seeing you at one of our many developments.



**DAVID WILSON HOMES**

WHERE QUALITY LIVES

\*We', 'our', 'us' refers to the Barratt Redrow PLC Group brands including Barratt Homes, Barratt London, David Wilson Homes and Redrow Homes. David Wilson Homes is a brand name of BDW TRADING LIMITED (Company Number 03018173) a company registered in England whose registered office is at Barratt House, Cartwright Way, Forest Business Park, Bardon Hill, Coalville, Leicestershire, LE67 1UF. VAT number GB633481836.



# BEAUCHAMP GATE

UCKFIELD

- **The Primrose**  
2 bedroom home
- **The Langham**  
3 bedroom home
- **The Alder**  
3 bedroom home
- **The Foxglove**  
3 bedroom home
- **The Sudbury**  
4 bedroom home
- **The Hazelborough**  
4 bedroom home
- **The Culver**  
4 bedroom home
- **The Wychwood**  
4 bedroom home
- **The Pennine**  
4 bedroom home
- **The Broadstairs**  
5 bedroom home
- **The Lenwade**  
5 bedroom home
- **Affordable Housing**
- SH **Show Homes**
- SC **Sales Centre**
- CS **Cycle Store**
- BS **Bin Store**
- BCP **Bin Collection Point**
- S/S **Sub Station**
- V **Visitor Parking Space**
- U **Unassigned Parking Space**
- L.E.A.P. **Local Equipped Area of Play**



- Ecological Area**
- Gravel Path**
- Attenuation Basin**
- New Tree Line**
- Giving nature a home on this development:**
- H **Hedgehog Highway**

Positioning of our sustainability features are subject to change. Speak to a Sales Adviser for more information.



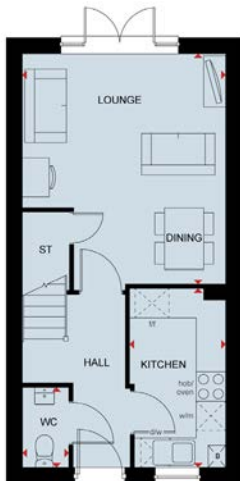
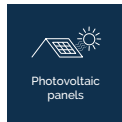
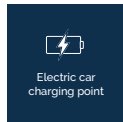
dwh.co.uk



**DAVID WILSON HOMES**  
WHERE QUALITY LIVES

# PRIMROSE

## TWO BEDROOM HOME



### Ground Floor

Lounge / Dining	4820 x 4150 mm	15' 10" x 13' 7"
Kitchen	3660 x 1960 mm	12' 0" x 6' 5"
WC	1638 x 945 mm	5' 4" x 3' 1"

(Approximate dimensions)



### First Floor

Bedroom 1	3145 x 4150 mm	10' 4" x 13' 7"
Bedroom 2	2992 x 4150 mm	9' 10" x 13' 7"
Bathroom	2125 x 1900 mm	7' 0" x 6' 3"

(Approximate dimensions)

### Key

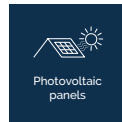
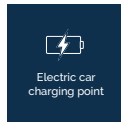
B	Boiler	wm	Washing machine space	f/f	Fridge/freezer space	◀▶	Dimension location
ST	Store	dw	Dishwasher space	w	Wardrobe space		



DAVID WILSON HOMES

# LANGHAM

## THREE BEDROOM HOME



### Ground Floor

Lounge	5860 x 3045mm	19'3" x 11'9"
Kitchen / Family / Dining	5860 x 3821mm	19'3" x 12'6"
WC	1835 x 1485mm	6'0" x 4'11"



### First Floor

Bedroom 1	3892 x 3075mm	12'9" x 10'1"
En Suite	2175 x 1430mm	7'2" x 4'8"
Bedroom 2	4684 x 2784mm	15'4" x 9'2"
Bedroom 3	3040 x 2987mm	9'12" x 9'10"
Bathroom	2185 x 1879mm	7'2" x 6'2"

(Approximate dimensions)

### Key

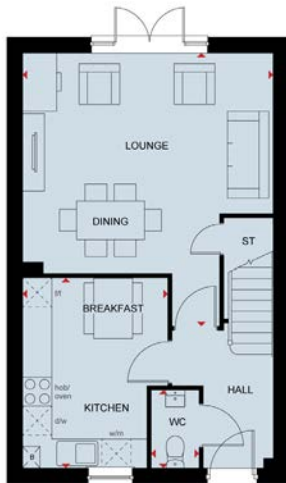
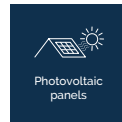
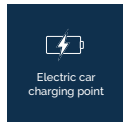
B	Boiler	wm	Washing machine space	f/f	Fridge/freezer space	◀▶	Dimension location
ST	Store	dw	Dishwasher space	w	Wardrobe space		



DAVID WILSON HOMES

# ALDER

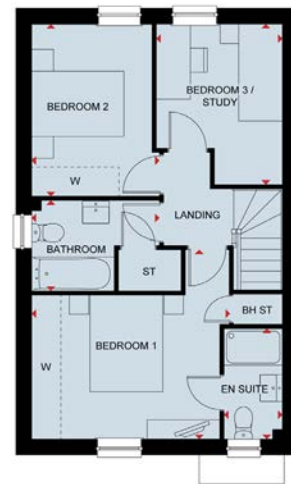
## THREE BEDROOM HOME



### Ground Floor

Lounge / Dining	5163 x 4543mm	16'11" x 14'11"
Kitchen / Breakfast	3868 x 2988mm	12'8" x 9'10"

(Approximate dimensions)



### First Floor

Bedroom 1	3875 x 2975mm	12'9" x 9'9"
En Suite	2282 x 1200mm	7'6" x 3'11"
Bedroom 2	3556 x 2480mm	11'8" x 8'2"
Bedroom 3	3302 x 2595mm	10'10" x 8'6"
Bathroom	1853 x 2643mm	6'1" x 8'8"

(Approximate dimensions)

### Key

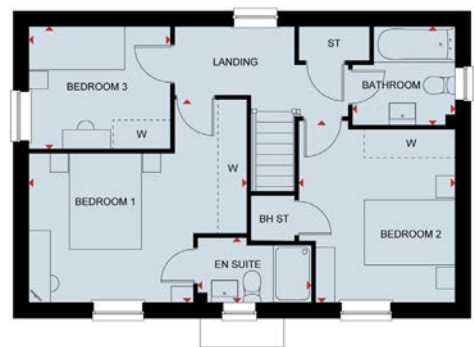
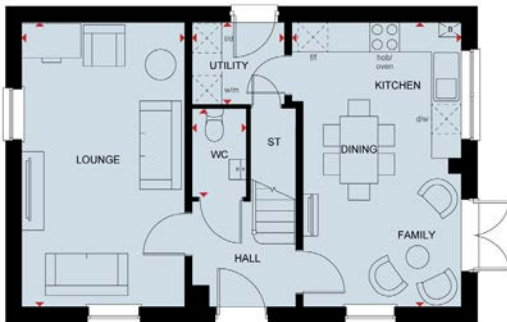
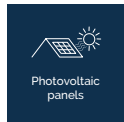
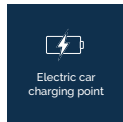
B	Boiler	wm	Washing machine space	f/f	Fridge/freezer space	w	Wardrobe space
ST	Store	dw	Dishwasher space	BH/ST	Bulkhead Store	◀▶	Dimension location



DAVID WILSON HOMES

# FOXGLOVE

## THREE BEDROOM HOME



### Ground Floor

Lounge	5743 x 3295mm	18' 10" x 10' 10"
Kitchen/Dining	5743 x 3200mm	18' 10" x 10' 6"
Utility	1660 x 2093mm	5' 5" x 6' 10"
WC	1771 x 1082mm	5' 10" x 3' 6"

(Approximate dimensions)

### First Floor

Bedroom 1	4534 x 4347mm	14' 11" x 14' 3"
En Suite	2421 x 1540mm	7' 11" x 5' 1"
Bedroom 2	3606 x 3267mm	11' 10" x 10' 9"
Bedroom 3	2955 x 2550mm	9' 8" x 8' 4"
Bathroom	2132 x 2049mm	6' 12" x 6' 9"

(Approximate dimensions)

### Key

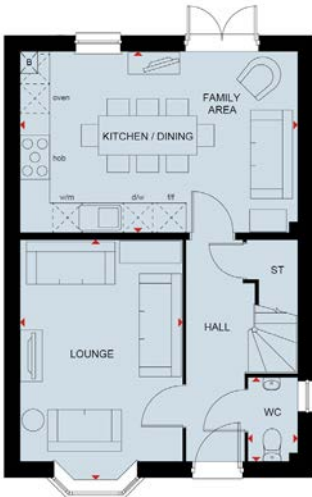
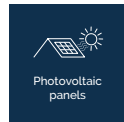
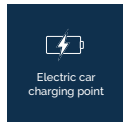
B	Boiler	wm	Washing machine space	f/f	Fridge/freezer space	w	Wardrobe space
ST	Store	dw	Dishwasher space	BH/ST	Bulkhead Store	◀▶	Dimension location



DAVID WILSON HOMES

# SUDBURY OPTION 1

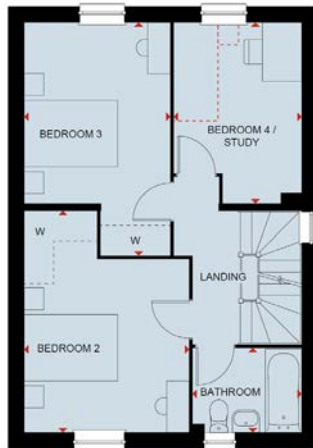
## FOUR BEDROOM HOME



### Ground Floor

Lounge	4895 x 3288mm	16'1" x 10'9"
Kitchen/Dining/Family	5630 x 3685mm	18'6" x 12'1"
WC	1710 x 993mm	5'7" x 3'3"

(Approximate dimensions)



### First Floor

Bedroom 2	4581 x 2958mm	15'0" x 9'8"
Bedroom 3	3661 x 3399mm	12'0" x 11'2"
Bedroom 4	3746 x 2590mm	12'3" x 8'6"
Bathroom	2208 x 1710mm	7'3" x 5'7"

(Approximate dimensions)



### Second Floor

Bedroom 1	5970 x 3464mm	19'7" x 11'4"
En suite	2083 x 1995mm	6'10" x 6'5"

(Approximate dimensions)

\* Overall floor dimension includes lowered ceiling areas

### Key

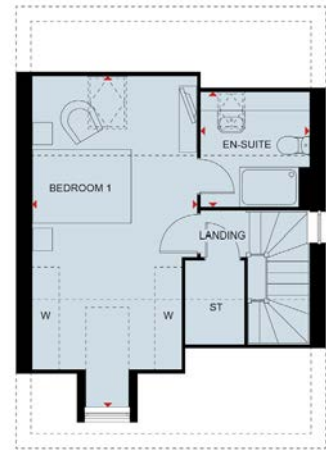
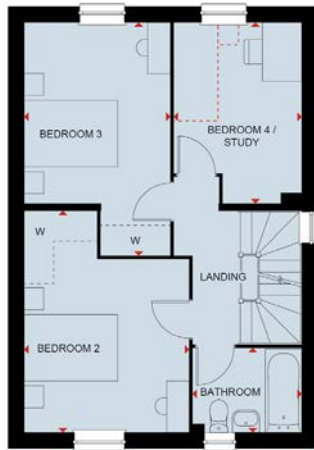
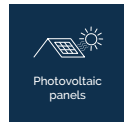
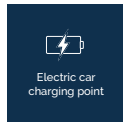
B	Boiler	wm	Washing machine space	f/f	Fridge/freezer space	↔	Dimension location
ST	Store	dw	Dishwasher space	w	Wardrobe space		



DAVID WILSON HOMES

# SUDBURY OPTION 2

## FOUR BEDROOM HOME



### Ground Floor

Lounge	4895 x 3288mm	16'1" x 10'9"
Kitchen/Dining/Family	5630 x 3685mm	18'6" x 12'1"
WC	1710 x 993mm	5'7" x 3'3"

(Approximate dimensions)

### First Floor

Bedroom 2	4581 x 2958mm	15'0" x 9'8"
Bedroom 3	3661 x 3399mm	12'0" x 11'2"
Bedroom 4	3746 x 2590mm	12'3" x 8'6"
Bathroom	2208 x 1710mm	7'3" x 5'7"

(Approximate dimensions)

### Second Floor

Bedroom 1	5970 x 3464mm	19'7" x 11'4"
En suite	2083 x 1995mm	6'10" x 6'5"

(Approximate dimensions)

\* Overall floor dimension includes lowered ceiling areas

### Key

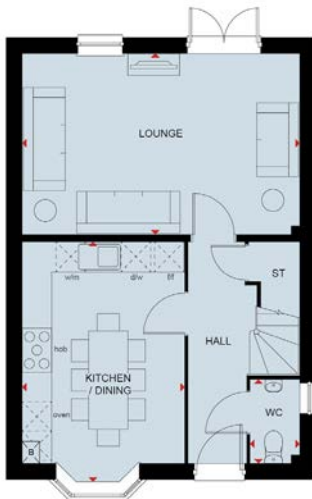
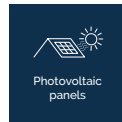
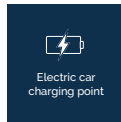
B	Boiler	wm	Washing machine space	f/f	Fridge/freezer space	↔	Dimension location
ST	Store	dw	Dishwasher space	w	Wardrobe space		



DAVID WILSON HOMES

# SUDBURY OPTION 3

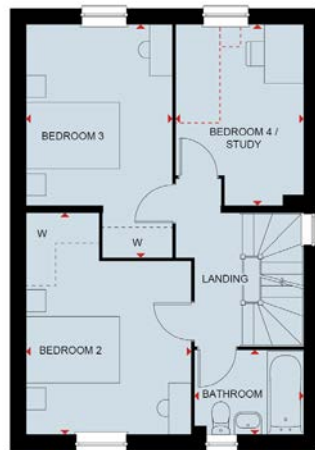
## FOUR BEDROOM HOME



### Ground Floor

Kitchen/Dining	4895 x 3288mm	16'1" x 10'9"
Lounge	5630 x 3685mm	18'6" x 12'11"
WC	1710 x 993mm	5'7" x 3'3"

(Approximate dimensions)



### First Floor

Bedroom 2	4581 x 2958mm	15'0" x 9'8"
Bedroom 3	3661 x 3399mm	12'0" x 11'2"
Bedroom 4	3746 x 2590mm	12'3" x 8'6"
Bathroom	2208 x 1710mm	7'3" x 5'7"

(Approximate dimensions)



### Second Floor

Bedroom 1	5970 x 3464mm	19'7" x 11'4"
En suite	2083 x 1995mm	6'10" x 6'5"

(Approximate dimensions)

\* Overall floor dimension includes lowered ceiling areas

### Key

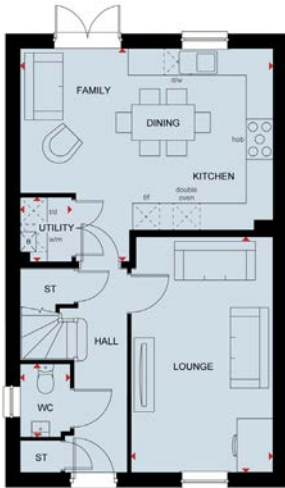
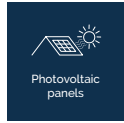
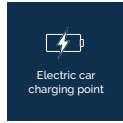
B	Boiler	wm	Washing machine space	f/f	Fridge/freezer space	↔	Dimension location
ST	Store	dw	Dishwasher space	w	Wardrobe space		



DAVID WILSON HOMES

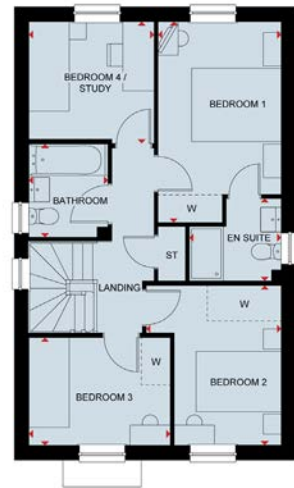
# HAZELBOROUGH

## FOUR BEDROOM HOME



### Ground Floor

Lounge	5261 x 3135mm	17'3" x 10'3"
Kitchen / Family / Dining	5580 x 4736mm	18'4" x 15'6"
WC	1634 x 1113mm	5'4" x 3'8"



### First Floor

Bedroom 1	4466 x 2723mm	14'8" x 8'11"
En Suite	1902 x 1825mm	6'3" x 5'12"
Bedroom 2	3574 x 2362mm	11'9" x 7'9"
Bedroom 3	3131 x 2536mm	10'3" x 8'4"
Bedroom 4	2770 x 2709mm	9'1" x 8'11"
Bathroom	2060 x 1738mm	6'10" x 5'8"

(Approximate dimensions)

### Key

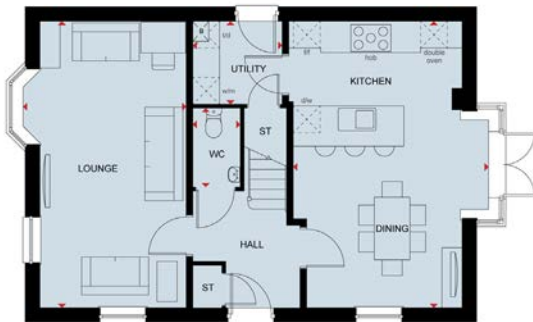
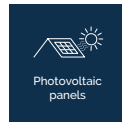
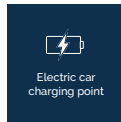
B	Boiler	wm	Washing machine space	f/f	Fridge/freezer space	◀▶	Dimension location
ST	Store	dw	Dishwasher space	w	Wardrobe space		



DAVID WILSON HOMES

# PENNINE

## FOUR BEDROOM HOME



### Ground Floor

Lounge	6422 x 3677mm	21'1" x 12'1"
Kitchen/Dining	6422 x 4683mm	21'1" x 15'4"
WC	1765 x 1050mm	5'9" x 3'5"
Utility	2001 x 1860mm	6'7" x 6'1"

(Approximate dimensions)

### First Floor

Bedroom 1	5416 x 3842mm	17'9" x 12'7"
En Suite	2276 x 1200mm	7'6" x 3'11"
Bedroom 2	3882 x 3387mm	12'9" x 11'1"
Bedroom 3	3387 x 2452mm	11'2" x 8'1"
Bedroom 4	3403 x 2328mm	11'2" x 7'8"
Bathroom	2213 x 1913mm	7'3" x 6'3"

(Approximate dimensions)

### Key

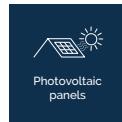
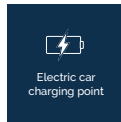
B	Boiler	wm	Washing machine space	f/f	Fridge/freezer space	w	Wardrobe space
ST	Store	dw	Dishwasher space	BH/ST	Bulkhead Store	◀▶	Dimension location



DAVID WILSON HOMES

# CULVER

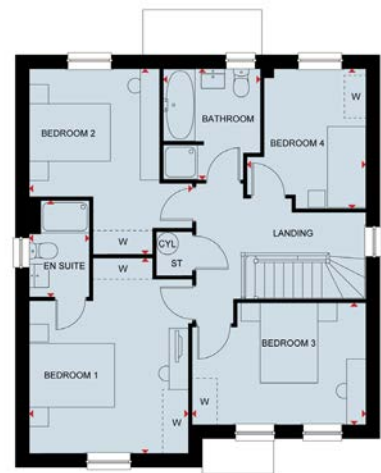
## FOUR BEDROOM HOME



### Ground Floor

Lounge	5757 x 3723mm	18'11" x 12'3"
Kitchen/Dining	5857 x 4628mm	19'3" x 15'2"
Utility	1860 x 1640mm	6'1" x 5'5"
Study	2861 x 2421mm	9'5" x 7'11"
WC	1878 x 1552mm	6'2" x 5'1"

(Approximate dimensions)



### First Floor

Bedroom 1	4538 x 3528mm	14'11" x 11'7"
En Suite	2250 x 1406mm	7'5" x 4'7"
Bedroom 2	4336 x 3054mm	14'3" x 10'0"
Bedroom 3	4275 x 2861mm	14'0" x 9'5"
Bedroom 4	3278 x 2763mm	10'9" x 9'1"
Bathroom	2578 x 2275mm	8'6" x 7'6"

(Approximate dimensions)

### Key

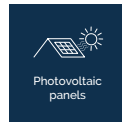
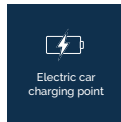
B	Boiler	wm	Washing machine space	f/f	Fridge/freezer space	w	Wardrobe space
ST	Store	dw	Dishwasher space	BH/ST	Bulkhead Store	◀▶	Dimension location



DAVID WILSON HOMES

# WYCHWOOD

## FOUR BEDROOM HOME



### Ground Floor

Lounge	5003 x 3615mm	16'5" x 11'10"
Kitchen/Breakfast/Dining	6635 x 4438mm	21'9" x 14'7"
Study	2885 x 2615mm	9'6" x 8'7"
Utility	2164 x 1760mm	7'1" x 5'9"
WC	1942 x 982mm	6'4" x 3'3"

(Approximate dimensions)



### First Floor

Bedroom 1	5540 x 3615mm	18'2" x 11'10"
En Suite	2177 x 1435mm	7'2" x 4'9"
Bedroom 2	5137 x 2700mm	16'10" x 8'10"
Bedroom 3	3416 x 3077mm	11'3" x 10'1"
Bedroom 4	3938 x 3674mm	12'11" x 12'1"
Bathroom	2872 x 2160mm	9'5" x 7'1"

(Approximate dimensions)

### Key

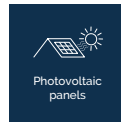
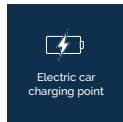
B	Boiler	wm	Washing machine space	f/f	Fridge/freezer space	w	Wardrobe space
ST	Store	dw	Dishwasher space	BH/ST	Bulkhead Store	◀▶	Dimension location



DAVID WILSON HOMES

# BROADSTAIRS

## FIVE BEDROOM DETACHED HOME



### Ground Floor

Lounge	6580 x 3573mm	21'7" x 11'9"
Kitchen	5107 x 4067mm	16'9" x 13'4"

(Approximate dimensions)



### First Floor

Bedroom 1	6580 x 3573mm	21'7" x 11'9"
En Suite	5107 x 4067mm	16'9" x 13'4"

(Approximate dimensions)

### Key

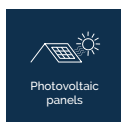
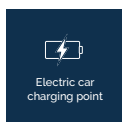
B	Boiler	wm	Washing machine space	f/f	Fridge/freezer space	BH/ST	Bulkhead Store	◀▶	Dimension location
ST	Store	dw	Dishwasher space	WFH	Working from home space	w	Wardrobe space		



DAVID WILSON HOMES

# LENWADE

## FIVE BEDROOM DETACHED HOME



### Ground Floor

Lounge	7073 x 4559mm	23'2" x 14'11"
Kitchen/Family/Breakfast	6602 x 5600mm	21'8" x 18'4"
Dining	4370 x 3243mm	14'4" x 10'8"
Utility	2437 x 1867mm	7'12" x 6'2"
WC	2092 x 1834mm	6'10" x 6'0"

(Approximate dimensions)

### Key

B	Boiler	wm	Washing machine space	f/f	Fridge/freezer space	w	Wardrobe space
ST	Store	dw	Dishwasher space	BH/ST	Bulkhead Store	◀▶	Dimension location



### First Floor

Bedroom 1	6509 x 4403mm	21'4" x 14'5"
En Suite 1	2307 x 1421mm	7'7" x 4'8"
Bedroom 2	4105 x 3287mm	13'6" x 10'9"
En Suite 2	2307 x 1421mm	7'7" x 4'8"
Bedroom 3	3952 x 3384mm	12'12" x 11'1"
Bedroom 4	3587 x 3538mm	11'9" x 11'7"
Bedroom 5 / Study	3271 x 2378mm	10'9" x 7'10"
Bathroom	3000 x 1900mm	9'10" x 6'3"

(Approximate dimensions)



DAVID WILSON HOMES

# YOUR BEAUTIFUL

NEW HOME COMES WITH PEACE OF MIND

David Wilson Homes has been crafting beautiful new homes since 1958. Our decades of experience and unrelenting commitment to excellence means that over 90% of our homeowners would recommend us to a friend, which is why we've been awarded 5 Stars by the Home Builders Federation every year since 2010. What's more, our homes come with an NHBC Buildmark Warranty which gives you a 10 year structural warranty and a 2 year fixtures and fittings warranty\*\*as standard. You're always safe in the knowledge that you can buy one of our new homes with confidence.

## WHAT DOES YOUR WARRANTY COVER?

- Central heating system plus any fires
- Hot and cold plumbing system
- Appliances
- Kitchen units
- Electrical system
- Sanitary ware taps and shower doors
- Windows
- External and interiors doors
- Ironmongery
- Renewable energy installation (if fitted)
- Internal/external drainage system
- Boundary brick walls
- Driveway
- 24-hour emergency cover for 2 years
- An NHBC 10 year Buildmark Warranty means we have complied with the NHBC Standards which set out the technical requirements for design, materials and workmanship in new home construction. This is just one of the added benefits of buying a new home.

## WARRANTY EXCLUSIONS

While your warranty includes most elements, certain aspects cannot be covered including:

- Garden landscaping
- Fences
- Wear and tear
- Your own alterations
- Registered Social Landlord Homes
- Carpets and floor coverings
- Failure to maintain
- Wilful damage



\*'We', 'our', 'us' refers to the Barratt Redrow PLC Group brands including Barratt Homes, Barratt London, David Wilson Homes and Redrow Homes.  
\*\*First 2 years covered by Builder Warranty & NHBC Guarantee or similar. Years 3-10 covered by NHBC insurance or similar. Full exclusions and limitations can be found on the NHBC website. Available on virtually all of our developments. Images may include optional upgrades at additional cost. All information in this document is correct to the best of our knowledge at the time of going to print. Calls to 03 numbers are charged at the same rate as dialing an 01 or 02 number. If your fixed line or mobile service has inclusive minutes to 01/02 numbers, then calls to 03 are counted as part of this inclusive call volume. Non-BT customers and mobile phone users should contact their service providers for information about the cost of calls.

# NEW HOMES

## Quality Code



Housebuilders and developers who build new homes will be expected to register with the [New Homes Quality Board](#) (NHQB). As long as a housebuilder or developer has followed the correct registration process, including completing the necessary training, introducing a complaints procedure, and following other processes and procedures that are needed to meet the requirements of this New Homes Quality Code (the code), they will become a registered developer.

Registered developers agree to follow the code and the New Homes Ombudsman Service, including accepting the decisions of the New Homes Ombudsman in relation to dealings with customers. If a registered developer does not meet the required standards, or fails to accept and act in line with the decisions of the New Homes Ombudsman, they may have action taken against them, including being removed from the register of registered developers.

The code sets out the requirements that registered developers must meet. The code may be updated from time to time to reflect changes to industry best practice as well as the decisions of the New Homes Ombudsman Service.

All homes built by registered developers must meet building-safety and other regulations. All registered developers should aim to make sure there are no snags or defects in their properties before the keys are handed over to a customer. If there are any snags or defects, these should be put right within the agreed timescales.

### What the code covers

For the purposes of this code, 'customer' means a person who is buying or intends to buy a new home which they will live in or give to another person. (If a new home is being bought in joint names, 'the customer' includes all the joint customers.) However, the New

Homes Quality Board have also started work to consider other groups of customers and what they should be able to expect from a new home. This includes shared owners and people who are buying a new home to let to other people. Any changes the New Homes Quality Board make to the code to reflect the needs of other groups of customers will be developed through consultation, and they will continually assess and review the effectiveness of the code, and any new laws or regulations that apply. Other areas which are not covered by the code are claims for loss of property value or blight (where a property falls in value or becomes difficult to sell because of major public work in the area), personal injury or claims that are not covered by the scheme rules of the New Homes Ombudsman Service.



DAVID WILSON HOMES

WHERE QUALITY LIVES

[dwh.co.uk](http://dwh.co.uk) or call **0330 057 2222**

P1250279/JUN26