



# KENSINGTON

— GATE —

DAVID WILSON HOMES

WHERE QUALITY LIVES

# EXPERIENCE

— THE DAVID WILSON DIFFERENCE —

At David Wilson Homes we have been building quality homes across the UK for over 40 years. Our reputation is founded on our commitment to provide traditional homes in desirable locations built to a superb specification.

We\* are delighted to have received over 90% homeowner recommendation since 2010. This Home Builders Federation accolade, recognises our commitment to bring you beautiful new homes.

Our collection of beautiful homes offer a range of spacious bedroom designs, located in highly desirable locations.

We would encourage you to come and experience the David Wilson Difference and we look forward to seeing you at one of our many developments.



**DAVID WILSON HOMES**  
WHERE QUALITY LIVES

# KENSINGTON GATE AMENITIES



## LOCAL AMENITIES

### NURSERIES

**Rushwick Pre School**  
Upper Wick La, Worcester WR2 5SU

**Poppins Day Nursery**  
2 Alexander Rd, Worcester WR2 4AJ

**Worcester Early Years Centre**  
MANOR FARM, Malvern Rd, Lower Wick, Worcester  
WR2 4BS

### SCHOOLS

**St Clement's Church of England Primary School**  
Henwick Rd, Worcester WR2 5NS

**RGS Worcester**  
Upper Tything, Worcester WR1 1HP

**Tudor Grange Academy Worcester**  
Tudor Grange, Bilford Rd, Worcester WR3 8HN

**Cherry Orchard Primary School**  
Timberdine Cl, Worcester WR5 2DD

**King's Worcester**  
5 College Grn, Worcester WR1 2LL

### TRANSPORT

**Worcester Shrub Hill**  
Shrub Hill Railway Station, off Shrub Hill, Shrub Hill  
Rd, Worcester WR4 9EJ

**Worcester Foregate Street**  
Worcester Foregate Street station, Foregate St,  
Worcester WR1 1DB

### HEALTHCARE

**Worcestershire Royal Hospital**  
Worcester WR5 1JR

**St John's House Medical Centre**  
299 Bromyard Rd, Worcester WR2 5FB

**St Johns Dental**  
11 Malvern Rd, St John's, Worcester WR2 4LE

### SUPERMARKETS

**Sainsbury's**  
Swanpool Walk, St John's, Worcester WR2 4EL

**Lidl**  
Eastern Ave, Lichfield WS13 6RL

**Co-op Food - Worcester - Gresham Road**  
53 Gresham Rd, Worcester WR2 5QS

**Marks & Spencer**  
39 High St, Worcester WR1 2QN

### PETS

**Pets at Home Worcester**  
Unit 2, Blackpole Retail Park, Blackpole Rd, Worcester  
WR3 8PQ

**Just For Pets Worcester**  
Shrub Hill Retail Park, Tallow Hill, Worcester WR5 1HE

### PLACES TO EAT

**Hickory's Smokehouse Worcester**  
Cripplegate Park, Tybridge St, Worcester WR2 5BA

**The Danesbury**  
55 Sidbury, Worcester WR1 2HU

**The Botanist Worcester**  
9A, 6 High St, Worcester WR1 2QE

**HASH**  
Crown Gate Shopping Centre, 5 Chapel Walk,  
Worcester WR1 3LD

**Browns at the Quay**  
24 Quay St, Worcester WR1 2JJ

**Ego at Manor Farm, Worcester**  
Malvern Rd, Worcester WR2 4BS

**Impasto**  
6 St Swithin's St, Worcester WR1 2PY

### LEISURE

**Worcester Golf and Country Club**  
Worcester Golf & Country Club, Bransford Rd,  
Worcester WR2 4EZ

**St Johns Sports Centre**  
13 Malvern Rd, St John's, Worcester WR2 4LE

**Worcester Woods Country Park**  
Wildwood Dr, Worcester WR5 2LG



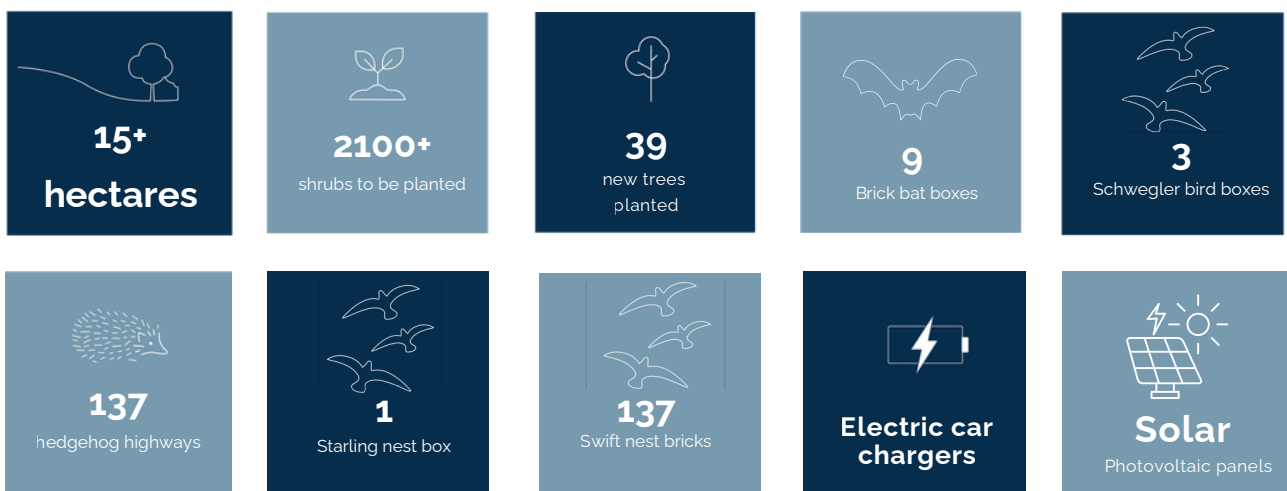
**DAVID WILSON HOMES**  
WHERE QUALITY LIVES

# CREATING A SUSTAINABLE COMMUNITY

WHERE FAMILIES AND NATURE CAN THRIVE AT KENSINGTON GATE



Throughout the planning process before starting build, we consider where we can introduce nature and where we can strengthen it. At David Wilson Homes, we do more than simply craft beautiful homes and desirable developments. We design and build great places that meet the highest standards, and that promote sustainable, healthy and happy living for our customers. We know we must give our customers confidence that their homes are designed and built to meet the challenges of the future. We do this through creating places where people and nature can thrive.





# KENSINGTON GATE

- **The Avebury**  
1 bedroom apartment
- **The Marlborough**  
2 bedroom apartment
- **The Harlington**  
2 bedroom apartment
- **The Wincham**  
2 bedroom home
- **The Ashdown**  
2 bedroom home
- **The Hadley**  
3 bedroom home
- **The Ingleby**  
4 bedroom home
- **The Avondale**  
4 bedroom home
- **The Holden**  
4 bedroom home
- **The Winstone**  
4 bedroom home
- **The Drummond**  
4 bedroom home

- MS **Marketing Suite**
- SH **Show Homes**
- CS Cycle Store**
- BS Bin Store**
- BCP Bin Collection Point**



- Multi-Use Games Area**
- Attenuation Pond**
- Play Area**
- Giving nature a home on this development:**
- Swift Nest Bricks **Starling Nest Box**
- Brick Bat Box **Brick Bat Box**
- Hedgehog Highway **Hedgehog Highway**

Positioning of our sustainability features are subject to change. Speak to a Sales Adviser for more information.

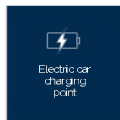


See the Difference at [dwh.co.uk](http://dwh.co.uk)



# THE AVEBURY

## ONE BEDROOM APARTMENT



### PLOTS 98 & 101:

Lounge/Kitchen/Dining	3969 x 4500 mm	130' x 149"
Bedroom	2698 x 3349 mm	8'10" x 11'0"
Bathroom	2130 x 3149 mm	6'11" x 10'4"

### Key

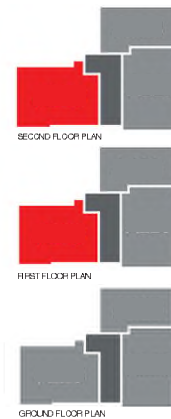
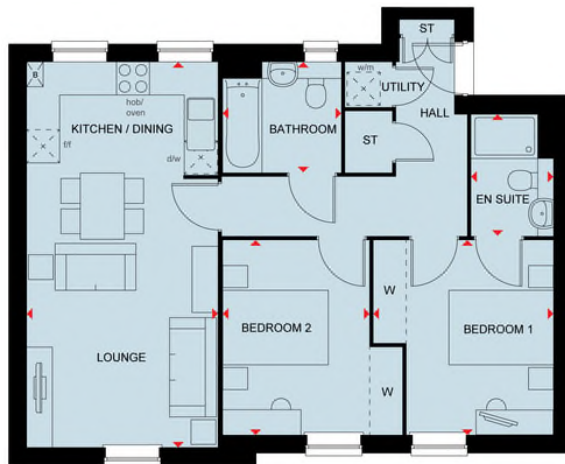
B	Boiler	wm	Washing machine space	f/f	Fridge freezer space	♦♦	Direction location
ST	Store	d/w	Dishwasher space	W	Wardrobe space		



DAVID WILSON HOMES

# THE HARLINGTON

## TWO BEDROOM APARTMENT



### PLOTS 97 & 100:

Lounge/Kitchen/Dining	3462 x 6990 mm	11'4" x 22'11"
Bedroom 1	3262 x 3526 mm	10'8" x 11'7"
Bedroom 2	2643 x 3526 mm	8'8" x 11'7"
Bathroom	2130 x 2000 mm	6'11" x 6'7"
En suite	1487 x 2000 mm	4'11" x 7'3"

### Key

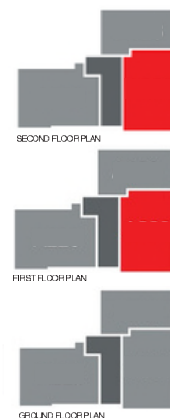
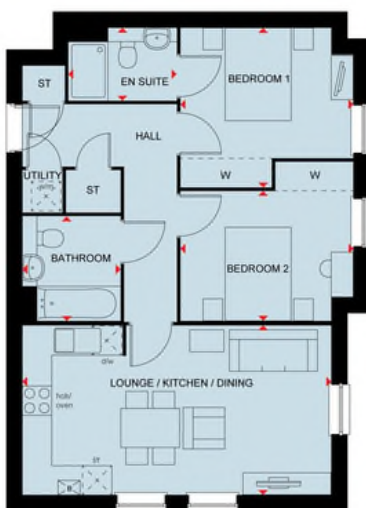
B	Boiler	wm	Washing machine space	f/f	Fridge freezer space	♦♦	Direction location
ST	Store	dw	Dishwasher space	W	Wardrobe space		



DAVID WILSON HOMES

# THE MARLBOROUGH

## TWO BEDROOM APARTMENT



**PLOTS 99 & 102:**

Lounge/Kitchen/Dining	3462 x 6315 mm	11'4" x 20'9"
Bedroom 1	3262 x 3526 mm	10'8" x 11'7"
Bedroom 2	2643 x 3526 mm	8'8" x 11'7"
Bathroom	2130 x 2000 mm	6'11" x 6'7"
En suite	1487 x 2200 mm	4'11" x 7'3"

### Key

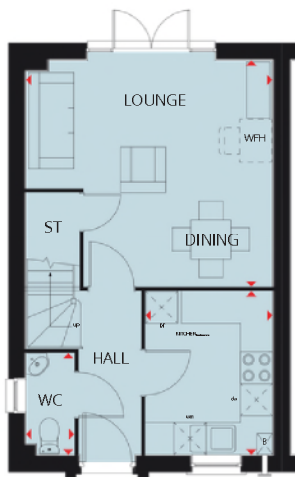
B Boiler	wm Washing machine space	f/f Fridge freezer space	•• Dimension location
ST Store	dw Dishwasher space	W Wardrobe space	



DAVID WILSON HOMES

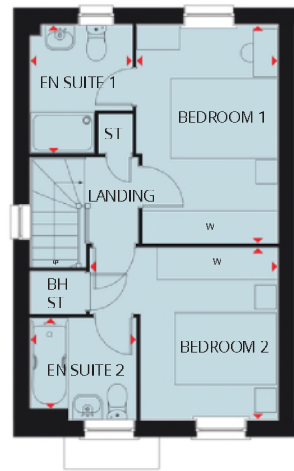
# THE ASHDOWN

## TWO BEDROOM HOME



### Ground Floor

Kitchen	3057 x 2378 mm	10'0" x 7'10"
Lounge/Dining	4612 x 4248 mm	15'2" x 13'11"
WC	1897 x 902 mm	6'3" x 3'11"



### First Floor

Bedroom 1	4089 x 2632 mm	13'5" x 8'7"
En suite 1	2391 x 1883 mm	7'10" x 6'0"
Bedroom 2	3504 x 3206 mm	11'6" x 10'6"
En suite 2	1969 x 1897 mm	6'6" x 6'3"

### Key

B	Bailer	BH	Bulkhead	wm	Washing machine space	f/f	Fridge freezer space	WFH	Working from home space	..	Dimension location
ST	Store	BH/ST	Bulkhead Store	ckw	Dishwasher space	td	Tumble dryer space	W	Wardrobe space		

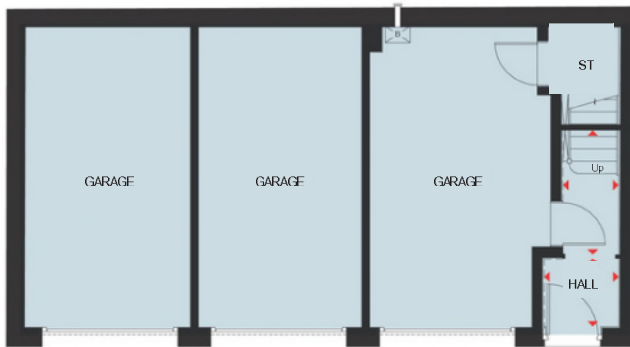


DAVID WILSON HOMES

We are on the New Homes Quality Code register of registered developers. "We" refers to the Barratt Developments PLC group brands including Barratt London, Barratt Homes and David Wilson Homes. All images used are for illustrative purposes. The images and the dimensions given are illustrative for this house type and individual properties may differ. Please check with your Sales Adviser in respect of individual properties. We give maximum dimensions within each room which includes areas of fixtures and fittings including fitted furniture. These dimensions should not be used for carpet or flooring sizes, appliance spaces or items of furniture. All images, photographs, dimensions and energy efficiency features depicted are not intended to be relied upon for, nor to form part of, any contract unless specifically incorporated in writing into the contract.

# THE WINCHAM

## TWO BEDROOM COACH HOUSE



### Ground Floor

Hall	1343 x 1216 mm	4'5" x 4'0"
Stairwell	1675 x 1002 mm	5'6" x 3'3"

### First Floor

Lounge/Dining	5384 x 4764 mm	17'8" x 15'8"
Kitchen	3710 x 1895 mm	12'2" x 6'3"
Bedroom 1	3401 x 3124 mm	11'2" x 10'3"
Bedroom 2	2571 x 3189 mm	8'5" x 10'6"
Bathroom	1966 x 1700 mm	6'5" x 5'7"
Lobby	3064 x 1117 mm	10'1" x 3'8"

### Key

B	Boiler	BH/ST	bulkhead Store	f/f	Fridge/freezer space	W	Wardrobe space
ST	Store	w/m	washing machine space	dw	Dishwasher space	↔	Dimension location

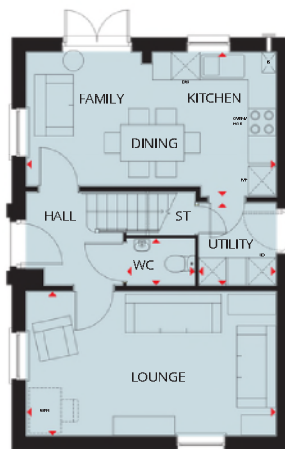


DAVID WILSON HOMES

We are on the New Homes Quality Code register of registered developers. "We" refers to the Barratt Developments PLC group brands including Barratt London, Barratt Homes and David Wilson Homes. All images used are for illustrative purposes. The images and the dimensions given are illustrative for this house type and individual properties may differ. Please check with your Sales Adviser in respect of individual properties. We give maximum dimensions within each room which includes areas of fixtures and fittings including fitted furniture. These dimensions should not be used for carpet or flooring sizes, appliance spaces or items of furniture. All images, photographs, dimensions and energy efficiency features depicted are not intended to be relied upon for, nor to form part of, any contract unless specifically incorporated in writing into the contract. BLDW00129/SEP24

# THE HADLEY

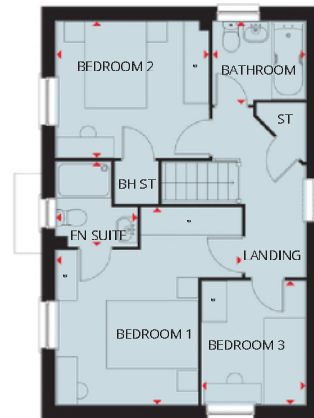
## THREE BEDROOM DETACHED HOME



\*Upward door/placement indicates exterior

### Ground Floor

Lounge	5450 x 3148 mm	17'11" x 10'4"
Kitchen-diner	5450 x 3143 mm	17'11" x 10'4"
Utility	1799 x 1688 mm	5'11" x 5'6"
WC	1480 x 1014 mm	4'10" x 3'4"



\*Upward window/placement indicates exterior

### First Floor

Bedroom 1	4324 x 4053 mm	14'2" x 13'3"
En Suite	1856 x 1771 mm	6'1" x 5'9"
Bedroom 2	3336 x 2978 mm	11'3" x 9'9"
Bedroom 3	2713 x 2265 mm	8'11" x 7'5"
Bathroom	2025 x 1811 mm	6'8" x 6'0"

### Key

B Boiler	w/m Washing machine space	dw Dishwasher space	W Wardrobe space	↗ Dimension location
ST Store	f/t Fridge/freezer space	TD Tumble dryer	WFH Working from home space	



DAVID WILSON HOMES

We are on the New Homes Quality Code register of registered developers. "We" refers to the Barratt Developments PLC group brands including Barratt London, Barratt Homes and David Wilson Homes. All images used are for illustrative purposes. The images and the dimensions given are illustrative for this house type and individual properties may differ. Please check with your Sales Adviser in respect of individual properties. We give maximum dimensions within each room which includes areas of fixtures and fittings including fitted furniture. These dimensions should not be used for carpet or flooring sizes, appliance spaces or items of furniture. All images, photographs, dimensions and energy efficiency features depicted are not intended to be relied upon for, nor to form part of, any contract unless specifically incorporated in writing into the contract. BDW004316/FEB24

# THE AVONDALE

## FOUR BEDROOM DETACHED HOME



### Ground Floor

Lounge	5488 x 3605 mm	18'0" x 11'10"
Kitchen/Breakfast/Dining	6590 x 4415 mm	21'7" x 14'6"
Utility	2060 x 1761 mm	6'9" x 5'9"
Study	2878 x 2488 mm	9'5" x 8'2"
WC	1768 x 975 mm	5'10" x 3'2"



### First Floor

Bedroom 1	5585 x 3605 mm	18'3" x 11'10"
Ensuite	2222 x 1433 mm	7'3" x 4'8"
Bedroom 2	5225 x 2792 mm	17'1" x 9'2"
Bedroom 3	3563 x 3308 mm	11'8" x 10'10"
Bedroom 4	3853 x 2547 mm	12'7" x 8'4"
Bathroom	2871 x 1927 mm	9'5" x 6'4"

### Key

B	Boller	f/f	Fridge/freezer space	wm	Washing machine space	W	Wardrobe space
ST	Store	aw	Dishwasher space	td	Tumble dryer space	↔	Dimension location

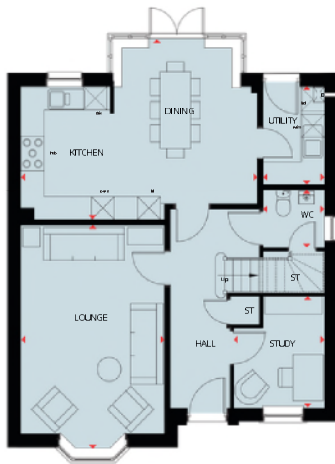
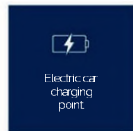


DAVID WILSON HOMES

We are on the New Homes Quality Code register of registered developers. "We" refers to the Barratt Developments PLC group brands including Barratt London, Barratt Homes and David Wilson Homes. All images used are for illustrative purposes. The images and the dimensions given are illustrative for this house type and individual properties may differ. Please check with your Sales Adviser in respect of individual properties. We give maximum dimensions within each room which includes areas of fixtures and fittings including fitted furniture. These dimensions should not be used for carpet or flooring sizes, appliance spaces or items of furniture. All images, photographs, dimensions and energy efficiency features depicted are not intended to be relied upon for, nor to form part of, any contract unless specifically incorporated in writing into the contract. BDW004316/FB24

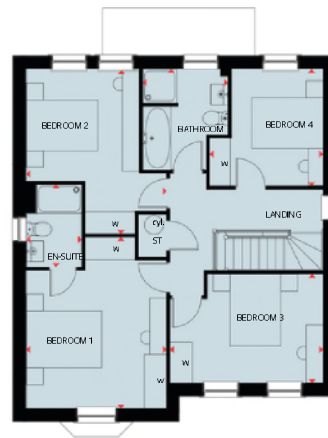
# THE HOLDEN

## FOUR BEDROOM DETACHED HOME



### Ground Floor

Lounge	5797 x 3723 mm	19'0" x 12'3"
Kitchen/Dining	6142 x 4685 mm	20'2" x 15'4"
Study	2881 x 2361 mm	9'6" x 7'9"
Utility	2545 x 1588 mm	8'4" x 5'3"
WC	1498 x 1588 mm	4'11" x 5'3"



### First Floor

Bedroom 1	4538 x 3728 mm	14'11" x 12'3"
En Suite	2190 x 1471 mm	7'2" x 4'10"
Bedroom 2	4379 x 3728 mm	14'4" x 12'3"
Bedroom 3	4073 x 2881 mm	13'4" x 9'5"
Bedroom 4	3115 x 3043 mm	10'3" x 10'0"
Bathroom	2689 x 2266 mm	8'10" x 7'5"

### Key

B Boiler	W Wardrobe space	wm Washing machine space	CYL Cylinder	↔ Dimension location
ST Store	f/f Fridge/freezer space	dw Dishwasher space	td Tumble dryer	



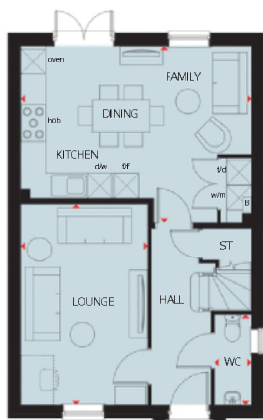
DAVID WILSON HOMES

# THE INGLEBY

## FOUR BEDROOM HOME

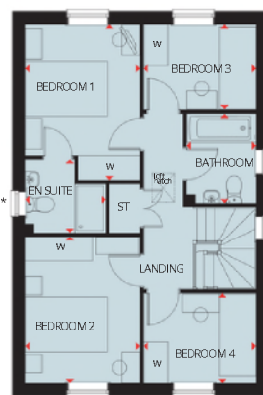


Features are plot specific. Please refer to working drawings.



### Ground Floor

Lounge	4930 x 3100 mm	16'2" x 10'2"
Kitchen/Family/Dining	5365 x 4305 mm	18'6" x 14'1"
WC Hall	2206 x 900 mm	7'3" x 2'11"
	4326 x 1572 mm	14'2" x 5'2"



\*Optional window refer to sales advice for individual plots

### First Floor

Bedroom 1	3802 x 2800 mm	12'6" x 9'2"
En Suite	1962 x 1800 mm	6'5" x 5'11"
Bedroom 2	3587 x 2800 mm	11'9" x 9'2"
Bedroom 3	2747 x 2066 mm	9'0" x 6'9"
Bedroom 4	2747 x 2172 mm	9'0" x 7'1"
Bathroom	2179 x 1700 mm	7'2" x 5'7"
Landing	4306 x 1306 mm	14'2" x 4'3"

### Key

B	Boiler	wm	Washing machine space	dw	Dishwasher space	W	Wardrobe space
St	Store	f/f	Fridge/freezer space	td	Tumble dryer space	↕	Dimension location

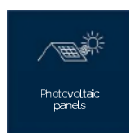
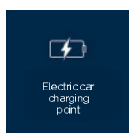


DAVID WILSON HOMES

We are on the New Homes Quality Code register of registered developers. "We" refers to the Barratt Developments PLC group brands including Barratt London, Barratt Homes and David Wilson Homes. All images used are for illustrative purposes. The images and the dimensions given are illustrative for this house type and individual properties may differ. Please check with your Sales Adviser in respect of individual properties. We give maximum dimensions within each room which includes areas of fixtures and fittings including fitted furniture. These dimensions should not be used for carpet or flooring sizes, appliance spaces or items of furniture. All images, photographs, dimensions and energy efficiency features depicted are not intended to be relied upon for, nor to form part of, any contract unless specifically incorporated in writing into the contract.

# DRUMMOND

## FOUR BEDROOM HOME



Ground Floor		
Lounge	5088 x 3845 mm	16'8" x 12'7"
Kitchen/Family/Dining	5845 x 4811 mm	19'2" x 15'9"
Utility	2856 x 1720 mm	9'4" x 5'8"
WC	1565 x 1485 mm	5'2" x 4'10"

First Floor		
Bedroom 1	3850 x 3707 mm	12'7" x 12'2"
En suite	2311 x 1511 mm	7'7" x 4'11"
Bedroom 2	4084 x 3844 mm	13'5" x 12'7"
Bedroom 3	3844 x 3521 mm	12'7" x 11'7"
Bedroom 4 / Study	3584 x 2966 mm	11'9" x 9'9"
Bathroom	2846 x 1887 mm	9'4" x 6'2"

### Key

B Boiler	ST Store	dw Dishwasher space	td Tumble dryer space	W Wardrobe space
CYL Cylinder	wm Washing machine space	f/f Fridge freezer space	WHH Working from home space	♦ Dimension location



DAVID WILSON HOMES

# THE WINSTONE

## FOUR BEDROOM DETACHED HOME



\* Window may not be available on certain plots. Speak to Sales Advisor for details on individual plans.



### Ground Floor

Lounge	5171 x 3665 mm	16'11" x 12'0"
Kitchen/Family/Breakfast	6535 x 5758 mm	21'5" x 18'11"
Dining	3563 x 2846 mm	11'8" x 9'4"
Study	3670 x 2159 mm	12'0" x 7'2"
Utility	2250 x 1591 mm	7'4" x 5'3"
WC	1470 x 1210 mm	4'10" x 4'0"

(Approximate dimensions)



### First Floor

Bedroom 1	5164 x 3624 mm	16'11" x 11'10"
Dressing	3155 x 2265 mm	10'4" x 7'5"
En Suite 1	2615 x 2182 mm	8'7" x 7'2"
Bedroom 2	3722 x 3218 mm	12'2" x 10'7"
En Suite 2	2710 x 1178 mm	8'11" x 3'10"
Bedroom 3	3363 x 2940 mm	11'1" x 9'8"
Bedroom 4	2623 x 3283 mm	11'10" x 10'9"
Bathroom	3014 x 2182 mm	9'10" x 7'2"

(Approximate dimensions)

### Key

B	Boiler	wm	Washing machine space	t/f	Fridge/freezer space	w	Wardrobe space
ST	Store	dw	Dishwasher space	BH/ST	Bulkhead Store	••	Dimension location

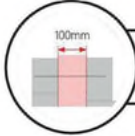


DAVID WILSON HOMES

We are on the New Homes Quality Code register of registered developers. "We" refers to the Barratt Developments PLC group, brands including Barratt London, Barratt Homes and David Wilson Homes. All images used are for illustrative purposes. The images and the dimensions given are illustrative for this house type and individual properties may differ. Please check with your Sales Advisor in respect of individual properties. We give maximum dimensions with the room number which includes areas of furniture and fittings including fixed furniture. These dimensions should not be used for carpet or flooring sizes, appliance spaces or items of furniture. All images, photographs, dimensions and energy efficiency features depicted are not intended to be relied upon and do not form part of any contractual arrangements specifically incorporated in writing into the contract.



Photovoltaics



Maintain 100mm Cavity With Full Fill Insulation



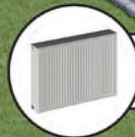
Increased Loft Insulation



Enhanced Double Glazing

4

Airtightness

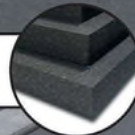


Larger Radiators Future Proof Air Source Heat Pump



Waste Water Heat Recovery

Increased Floor Insulation



Photographic Evidence



Decentralised Mechanical Extract Ventilation



Electric Car Charging Point



Scan here to discover more

DAVID WILSON HOMES

# YOUR BEAUTIFUL

NEW HOME COMES WITH PEACE OF MIND

David Wilson Homes has been crafting beautiful new homes since 1958. Our decades of experience and unrelenting commitment to excellence means that over 90% of our homeowners would recommend us to a friend, which is why we've been awarded 5 Stars by the Home Builders Federation every year since 2010. What's more, our homes come with an NHBC Buildmark Warranty which gives you a 10 year structural warranty and a 2 year fixtures and fittings warranty\*\* as standard. You're always safe in the knowledge that you can buy one of our new homes with confidence.

## WHAT DOES YOUR WARRANTY COVER?

- Central heating system plus any fires
- Hot and cold plumbing system
- Appliances
- Kitchen units
- Electrical system
- Sanitary ware taps and shower doors
- Windows
- External and interiors doors
- Ironmongery
- Renewable energy installation (if fitted)
- Internal/external drainage system
- Boundary brick walls
- Driveway
- 24-hour emergency cover for 2 years
- An NHBC 10 year Buildmark Warranty means we have complied with the NHBC Standards which set out the technical requirements for design, materials and workmanship in new home construction. This is just one of the added benefits of buying a new home.

## WARRANTY EXCLUSIONS

While your warranty includes most elements, certain aspects cannot be covered including:

- Garden landscaping
- Registered Social Landlord Homes
- Fences
- Carpets and floor coverings
- Wear and tear
- Failure to maintain
- Your own alterations
- Wilful damage



\*"We" and "us" refer to the Barratt Developments PLC Group brands. \*\*First 2 years covered by Builder Warranty & NHBC Guarantee or similar. Years 3-10 covered by NHBC insurance or similar. Full exclusions and limitations can be found on the NHBC website. Available on virtually all of our developments. Images may include optional upgrades at additional cost. All information in this document is correct to the best of our knowledge at the time of going to print. Calls to our 0844 numbers cost 7 pence per minute plus your phone company's access charge.

# NEW HOMES

## Quality Code



Housebuilders and developers who build new homes will be expected to register with the [New Homes Quality Board](#) (NHQB). As long as a housebuilder or developer has followed the correct registration process, including completing the necessary training, introducing a complaints procedure, and following other processes and procedures that are needed to meet the requirements of this New Homes Quality Code (the code), they will become a registered developer.

Registered developers agree to follow the code and the New Homes Ombudsman Service, including accepting the decisions of the New Homes Ombudsman in relation to dealings with customers. If a registered developer does not meet the required standards, or fails to accept and act in line with the decisions of the New Homes Ombudsman, they may have action taken against them, including being removed from the register of registered developers.

The code sets out the requirements that registered developers must meet. The code may be updated from time to time to reflect changes to industry best practice as well as the decisions of the New Homes Ombudsman Service.

All homes built by registered developers must meet building-safety and other regulations. All registered developers should aim to make sure there are no snags or defects in their properties before the keys are handed over to a customer. If there are any snags or defects, these should be put right within the agreed timescales.

What the code covers For the purposes of this code, 'customer' means a person who is buying or intends to buy a new home which they will live in or give to another person. (If a new home is being bought in joint names, 'the customer' includes all the joint customers.) However, the New Homes Quality Board have also

started work to consider other groups of customers and what they should be able to expect from a new home. This includes shared owners and people who are buying a new home to let to other people. Any changes the New Homes Quality Board make to the code to reflect the needs of other groups of customers will be developed through consultation, and they will continually assess and review the effectiveness of the code, and any new laws or regulations that apply.

Other areas which are not covered by the code are claims for loss of property value or blight (where a property falls in value or becomes difficult to sell because of major public work in the area), personal injury or claims that are not covered by the scheme rules of the New Homes Ombudsman Service.



DAVID WILSON HOMES

WHERE QUALITY LIVES

[dwh.co.uk](http://dwh.co.uk) or call 0333 355 8479

Calls to 03 numbers are charged at the same rate as dialling an 01 or 02 number. If your fixed line or mobile service has inclusive minutes to 01/02 numbers, then calls to 03 are counted as part of this inclusive call volume. Non-BT customers and mobile phone users should contact their service providers for information about the cost of calls. BDW004143/JAN24